

# Simple Method for Testing Bond over Painted Surfaces

When EIFS are to be installed over a painted wall, it is essential to first test the adhesive to be used for its ability to bond to the paint and to confirm that the paint is bonded to the wall. The test method shown in this bulletin does not replace the quantifiable adhesion test method achievable by using a tensile tester and test blocks. This method will simply give you a quick evaluation when a quantifiable number is not required. Conduct tests on the typical surfaces of the building. All projects should have a minimum of one test per elevation and condition. Prepare the test areas by pressure washing or cleaning with brush and water.



## STEP 1

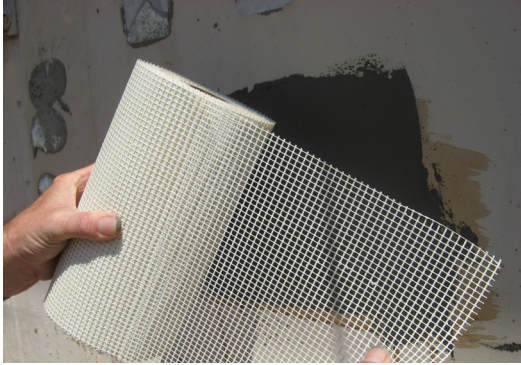
- Brush apply Master Builders Solutions WB Surface Stabilizer onto a small area (at least 1 sq. ft.) where the adhesion testing will be performed.
- The WB Surface Stabilizer must be allowed to dry, but not in excess of 24 hours.
- Protect the WB Surface Stabilizer from rain and do not allow to freeze.

**Note:** In some cases the test may be performed without WB Surface Stabilizer. In other cases, performing two tests — one with WB Surface Stabilizer and one without WB Surface Stabilizer should be performed to determine if WB Surface Stabilizer is required.



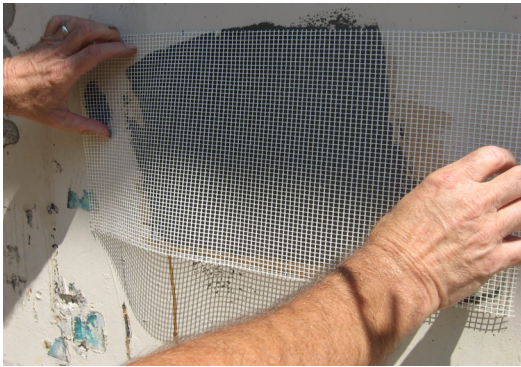
## STEP 2

- When the WB Surface Stabilizer has dried, trowel apply the mixed Master Builders Solutions adhesive product over the prepared areas to a thickness to receive a strip of Reinforcing Mesh - approximately 1/8"



**STEP 3**

- Use either Master Builders Solutions Wall Systems Detail Mesh or cut a piece of 4 ounce Master Builders Solutions Wall Systems Reinforcing Mesh from a roll.



**STEP 4**

- Cut a piece of Reinforcing Mesh about 3 to 4 inches longer than the area where you applied the adhesive.



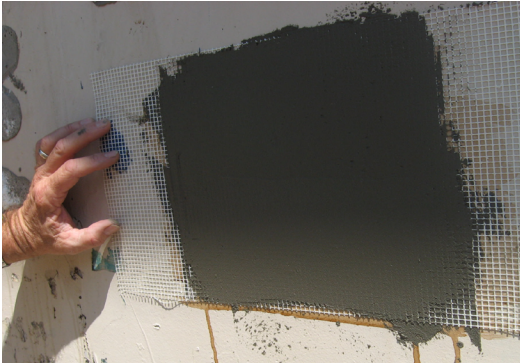
**STEP 5**

- Trowel apply the Reinforcing Mesh into the wet adhesive.



**STEP 6**

- Ensure the Reinforcing Mesh is fully embedded into the adhesive



**STEP 7**

- Protect this test patch from rain or freezing conditions.



**STEP 8**

- Wait a minimum of 48 hours to make sure the adhesive has dried thoroughly.



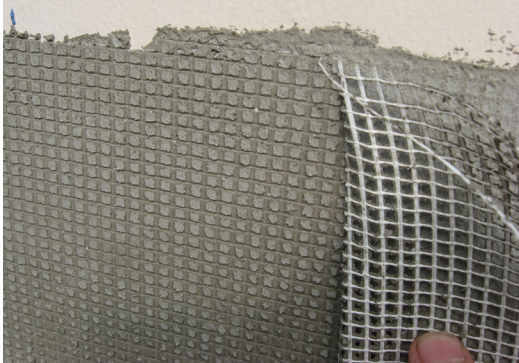
**STEP 9**

- Once the adhesive has thoroughly dried, grab one loose end of the Reinforcing Mesh.



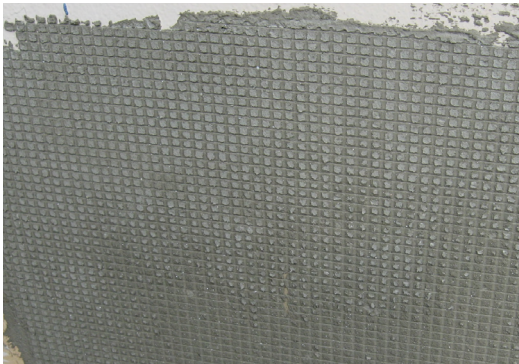
**STEP 10**

- Pull the Reinforcing Mesh straight out away from the wall



**STEP 11**

- If the Reinforcing Mesh pulls through the patch and all the adhesive stays adhered to the primed/tested surface, the bond of the adhesive to the paint and paint to the wall is good.
- If the adhesive pulls away from the underlying substrate, the paint must be removed or an alternate adhesion method will be required.



**STEP 12**

- This photo illustrates excellent adhesion utilizing the WB Surface Stabilizer and adhesive to the painted surface.
- Results must be interpreted on site to determine acceptability of adhesion.

---

**LIMITED WARRANTY NOTICE**

Master Builders Solutions Construction Systems US, LLC (“Master Builders”) warrants this product to be free from manufacturing defects and to meet the technical properties on the current Technical Data Guide, if used as directed within shelf life. Satisfactory results depend not only on quality products but also upon many factors beyond our control. MASTER BUILDERS MAKES NO OTHER WARRANTY OR GUARANTEE, EXPRESS OR IMPLIED, INCLUDING WARRANTIES OF MERCHANTABILITY OR FITNESS FOR A PARTICULAR PURPOSE WITH RESPECT TO ITS PRODUCTS. The sole and exclusive remedy of Purchaser for any claim concerning this product, including but not limited to, claims alleging breach of warranty, negligence, strict liability or otherwise, is shipment to purchaser of product equal to the amount of product that

fails to meet this warranty or refund of the original purchase price of product that fails to meet this warranty, at the sole option of Master Builders. Any claims concerning this product must be received in writing within one (1) year from the date of shipment and any claims not presented within that period are waived by Purchaser. MASTER BUILDERS WILL NOT BE RESPONSIBLE FOR ANY SPECIAL, INCIDENTAL, CONSEQUENTIAL (INCLUDING LOST PROFITS) OR PUNITIVE DAMAGES OF ANY KIND.

Purchaser must determine the suitability of the products for the intended use and assumes all risks and liabilities in connection therewith. This information and all further technical advice are based on Master Builders’ present knowledge and experience. However, Master Builders assumes no liability for providing such information and advice including the extent to

which such information and advice may relate to existing third party intellectual property rights, especially patent rights, nor shall any legal relationship be created by or arise from the provision of such information and advice. Master Builders reserves the right to make any changes according to technological progress or further developments. The Purchaser of the Product(s) must test the product(s) for suitability for the intended application and purpose before proceeding with a full application of the product(s). Performance of the product described herein should be verified by testing and carried out by qualified experts.

**FOR PROFESSIONAL USE ONLY. NOT FOR SALE TO OR USE BY THE GENERAL PUBLIC.**

For the most current version of this literature, please visit our website at [www.master-builders-solutions.com/en-us](http://www.master-builders-solutions.com/en-us).