



**Senergy**<sup>®</sup>

# SenerPanel CI

Typical Details

A brand of

**MASTER**<sup>®</sup>  
**BUILDERS**  
SOLUTIONS

(THIS PAGE INTENTIONALLY LEFT BLANK)

# SenerPanel CI

## Typical Details

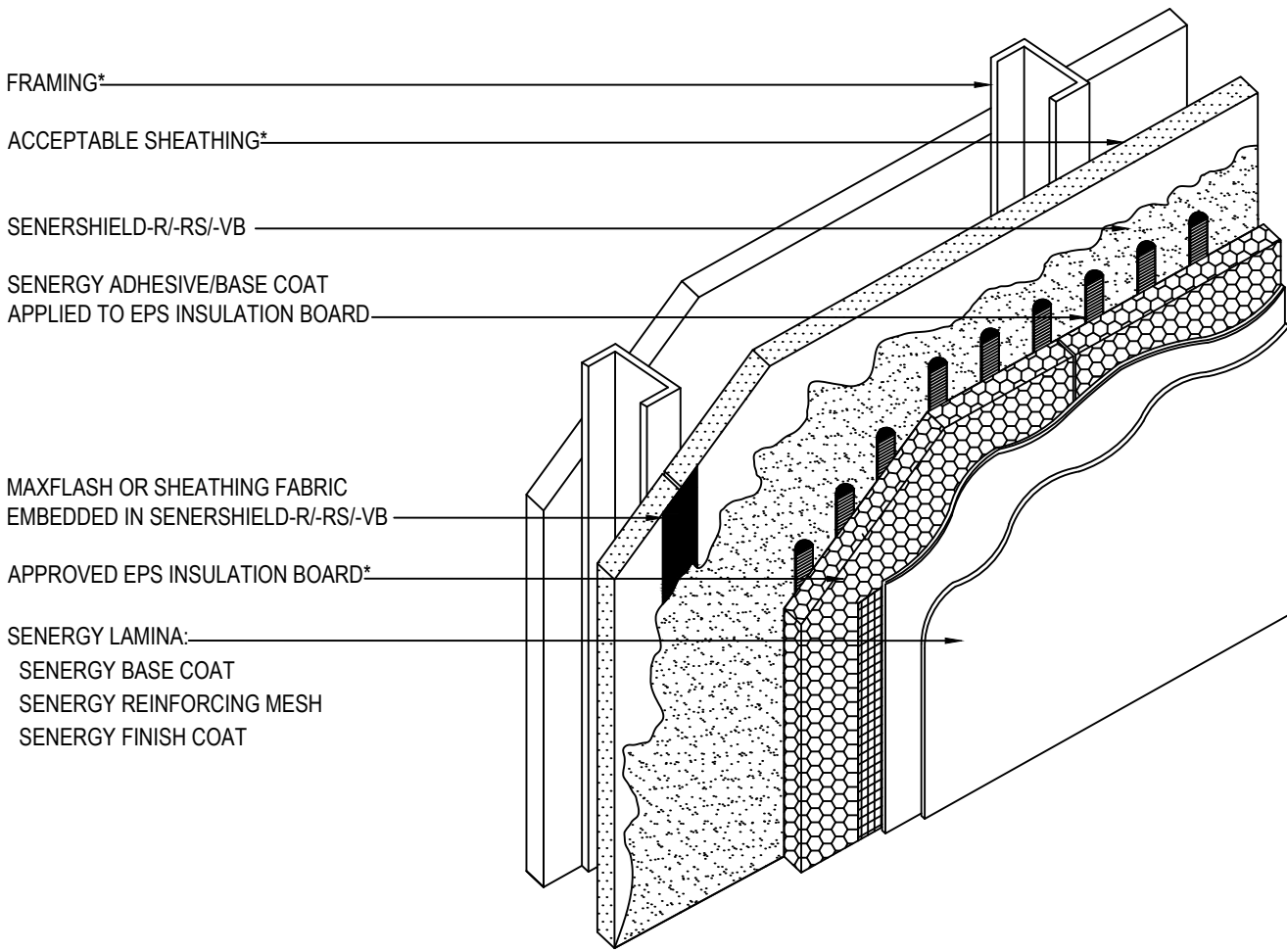
### Table of Contents

1	Typical SenerPanel Isometric View	11	Typical Window Jamb (Flush)
2	Typical Horizontal Panel to Panel Joint	12	Typical Window Sill Detail (Flush)
3	Typical Vertical Panel to Panel Joint	13	Typical Window Jamb (Recessed)
4	Typical Inside Corner Application	14	Typical Window Sill Detail (Recessed)
5	Typical Outside Corner Application	15	Typical Sign Attachment
6	Typical Aesthetic Groove		
7	Typical Pipe Penetration		
8	Typical Light Fixture		
9	Typical Window Head (Flush)		
10	Typical Window Head (Recessed)		

#### Notes:

- Unsatisfactory conditions shall be reported to the General Contractor and corrected before the application of Master Builders Solutions- Wall Systems products.
- Install Master Builders Solutions materials in accordance with current installation instructions.
- The details within represent Master Builders Solutions- Wall Systems latest recommendations. They are presented in good faith by Master Builders Solutions- Wall Systems . The details are subject to change without notice. Master Builders Solutions- Wall Systems accepts no liability for the end use of the details. For conditions not shown, Master Builders Solutions- Wall Systems for review of specific detail.

(THIS PAGE INTENTIONALLY LEFT BLANK)



\*BY OTHERS

REV 230330

## TYPICAL SENERPANEL ISOMETRIC VIEW

### SENERPANEL CI DESIGN

SCALE: NTS  
**01**

Structure, substrates, flashing, and other items which are not part of the Senergy *SenerPanel CI System* are the responsibility of others. This detail is subject to change without notice. Senergy accepts no liability for the end use of this detail. For conditions not shown, consult Senergy Technical Services for review of specific detail.



ACCEPTABLE SHEATHING\*

SENERSHIELD-R/-RS/-VB

SENERGY ADHESIVE/BASE COAT  
APPLIED TO EPS INSULATION BOARD

FRAMING\*

APPROVED EPS INSULATION BOARD\*

BACKER ROD AND SEALANT\*

WIDTH PER DESIGN

WRAP BASE COAT AND  
REINFORCING MESH

WRAP SHEATHING FABRIC EMBEDDED  
IN SENERSHIELD-R/-RS/-VB

SENERGY LAMINA:  
SENERGY BASE COAT  
SENERGY REINFORCING MESH  
SENERGY FINISH COAT

NOTE: DO NOT APPLY FINISH INTO JOINT RECEIVE SEALANT

\*BY OTHERS

REV 230330

## TYPICAL HORIZONTAL PANEL TO PANEL JOINT SENERPANEL CI DESIGN

SCALE: NTS

02

Structure, substrates, flashing, and other items which are not part of the Senergy *SenerPanel CI System* are the responsibility of others. This detail is subject to change without notice. Senergy accepts no liability for the end use of this detail. For conditions not shown, consult Senergy Technical Services for review of specific detail.

**Senergy**<sup>®</sup>

ACCEPTABLE SHEATHING\*

SENERSHIELD-R/-RS/-VB

SENERGY ADHESIVE/BASE COAT  
APPLIED TO EPS INSULATION BOARD

FRAMING\*

APPROVED EPS INSULATION BOARD\*

BACKER ROD AND SEALANT\*

WIDTH PER DESIGN

WRAP BASE COAT AND  
REINFORCING MESH

WRAP SHEATHING FABRIC EMBEDDED  
IN SENERSHIELD-R/-RS/-VB

SENERGY LAMINA:  
SENERGY BASE COAT  
SENERGY REINFORCING MESH  
SENERGY FINISH COAT

NOTE: DO NOT APPLY FINISH INTO JOINT RECEIVE SEALANT

(PLAN VIEW)

\*BY OTHERS

REV 230330

## TYPICAL VERTICAL PANEL TO PANEL JOINT SENERPANEL CI DESIGN

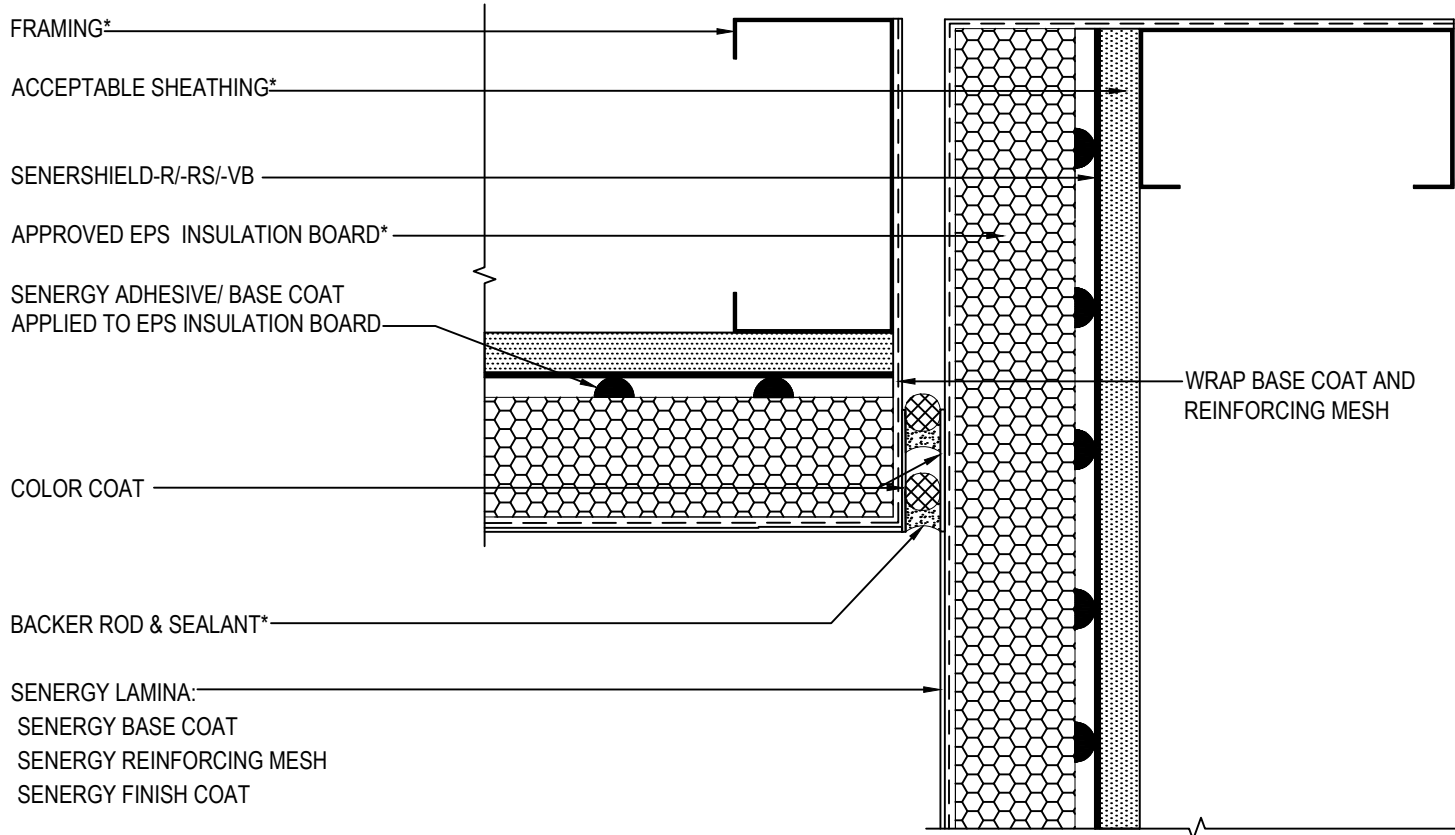
SCALE: NTS

# 03

Structure, substrates, flashing, and other items which are not part of the Senergy *SenerPanel CI System* are the responsibility of others. This detail is subject to change without notice. Senergy accepts no liability for the end use of this detail. For conditions not shown, consult Senergy Technical Services for review of specific detail.

# **Senergy**<sup>®</sup>





**NOTE: DO NOT APPLY FINISH INTO JOINT RECEIVE SEALANT**

\*BY OTHERS

REV 230330

## TYPICAL INSIDE CORNER APPLICATION SENERPANEL CI DESIGN

SCALE: NTS

04

Structure, substrates, flashing, and other items which are not part of the Senergy *SenerPanel CI System* are the responsibility of others. This detail is subject to change without notice. Senergy accepts no liability for the end use of this detail. For conditions not shown, consult Senergy Technical Services for review of specific detail.

Senergy®



FRAMING\*

ACCEPTABLE SHEATHING\*

SENERSHIELD-R/-RS/-VB

SENERGY ADHESIVE/ BASE COAT  
APPLIED TO EPS INSULATION BOARD

APPROVED EPS INSULATION BOARD\*

SENERGY LAMINA:  
SENERGY BASE COAT  
SENERGY REINFORCING MESH  
SENERGY FINISH COAT

COLOR COAT

BACKER ROD & SEALANT\*

(PLAN VIEW)

NOTE: DO NOT APPLY FINISH INTO JOINT RECEIVE SEALANT

\*BY OTHERS

REV 230330

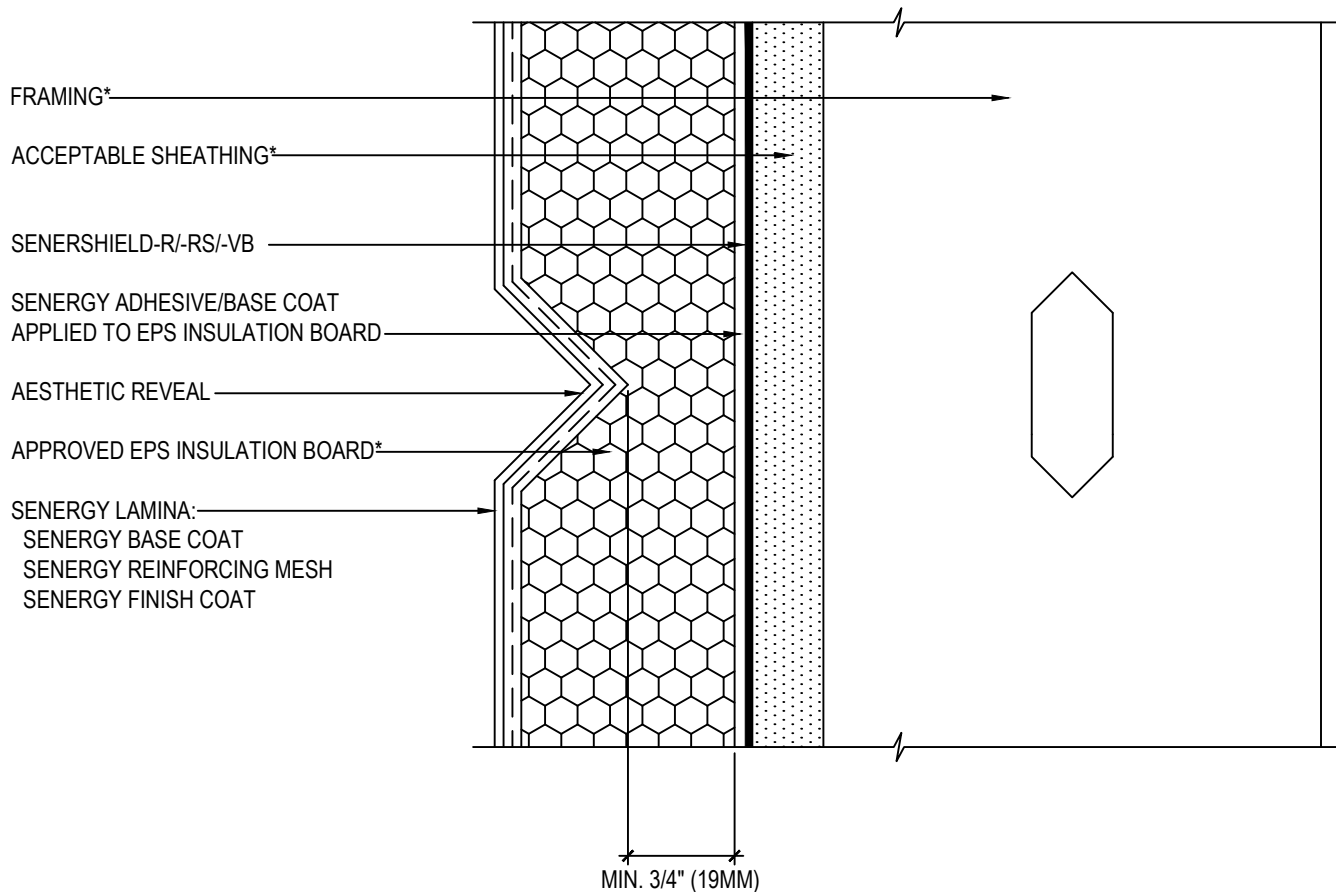
## TYPICAL OUTSIDE CORNER APPLICATION SENERPANEL CI DESIGN

SCALE: NTS

# 05

Structure, substrates, flashing, and other items which are not part of the Senergy *SenerPanel CI System* are the responsibility of others. This detail is subject to change without notice. Senergy accepts no liability for the end use of this detail. For conditions not shown, consult Senergy Technical Services for review of specific detail.

# Senergy®



\*BY OTHERS

REV 230330

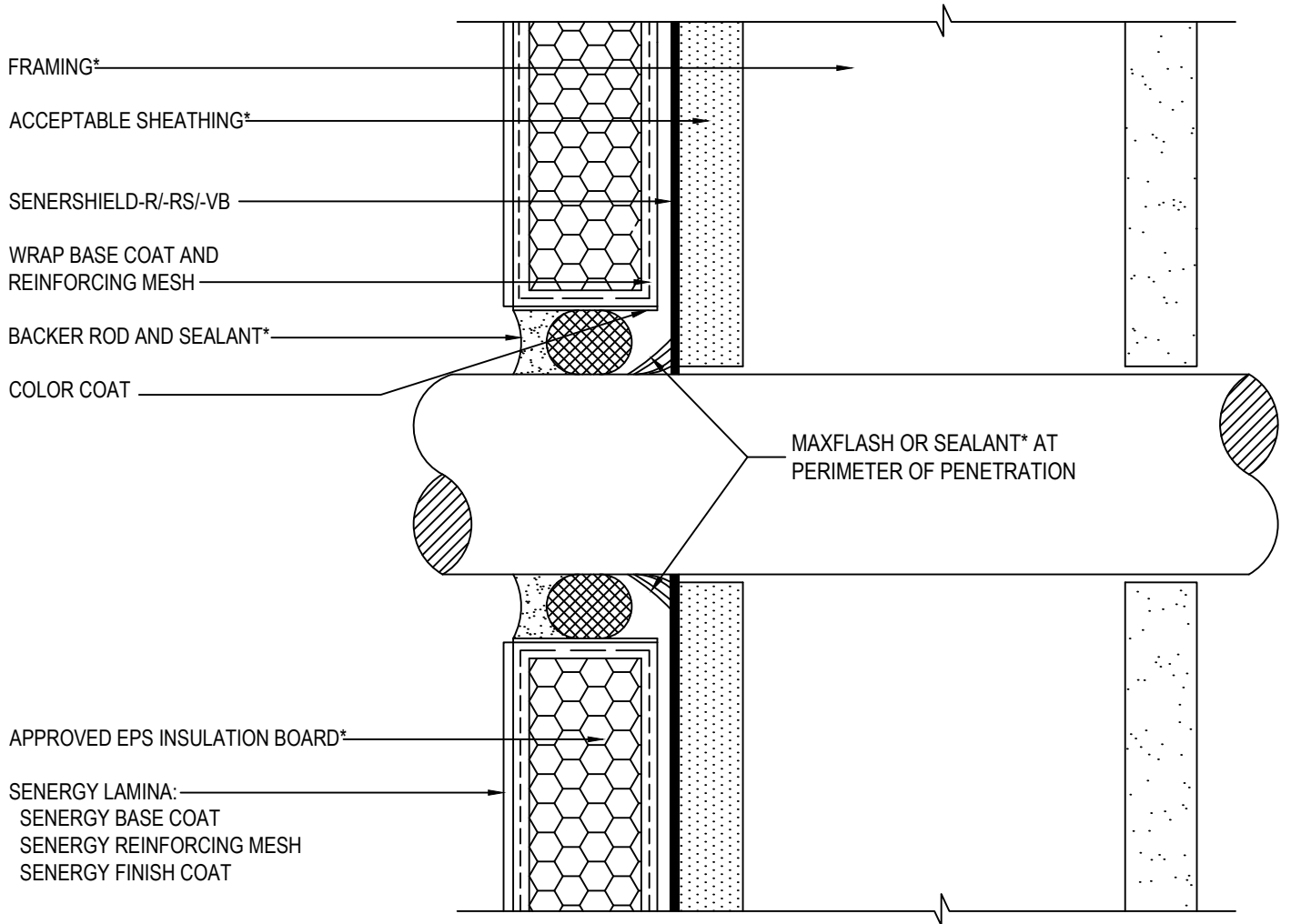
## TYPICAL AESTHETIC GROOVE SENERPANEL CI DESIGN

SCALE: NTS

06

Structure, substrates, flashing, and other items which are not part of the Senergy *SenerPanel CI System* are the responsibility of others. This detail is subject to change without notice. Senergy accepts no liability for the end use of this detail. For conditions not shown, consult Senergy Technical Services for review of specific detail.

**Senergy**<sup>®</sup>



**NOTE:**  
 - ADD FRAMING AS NECESSARY TO SUPPORT PENETRATION  
 - DO NOT APPLY FINISH INTO JOINT TO RECEIVE SEALANT

\*BY OTHERS

REV 230330

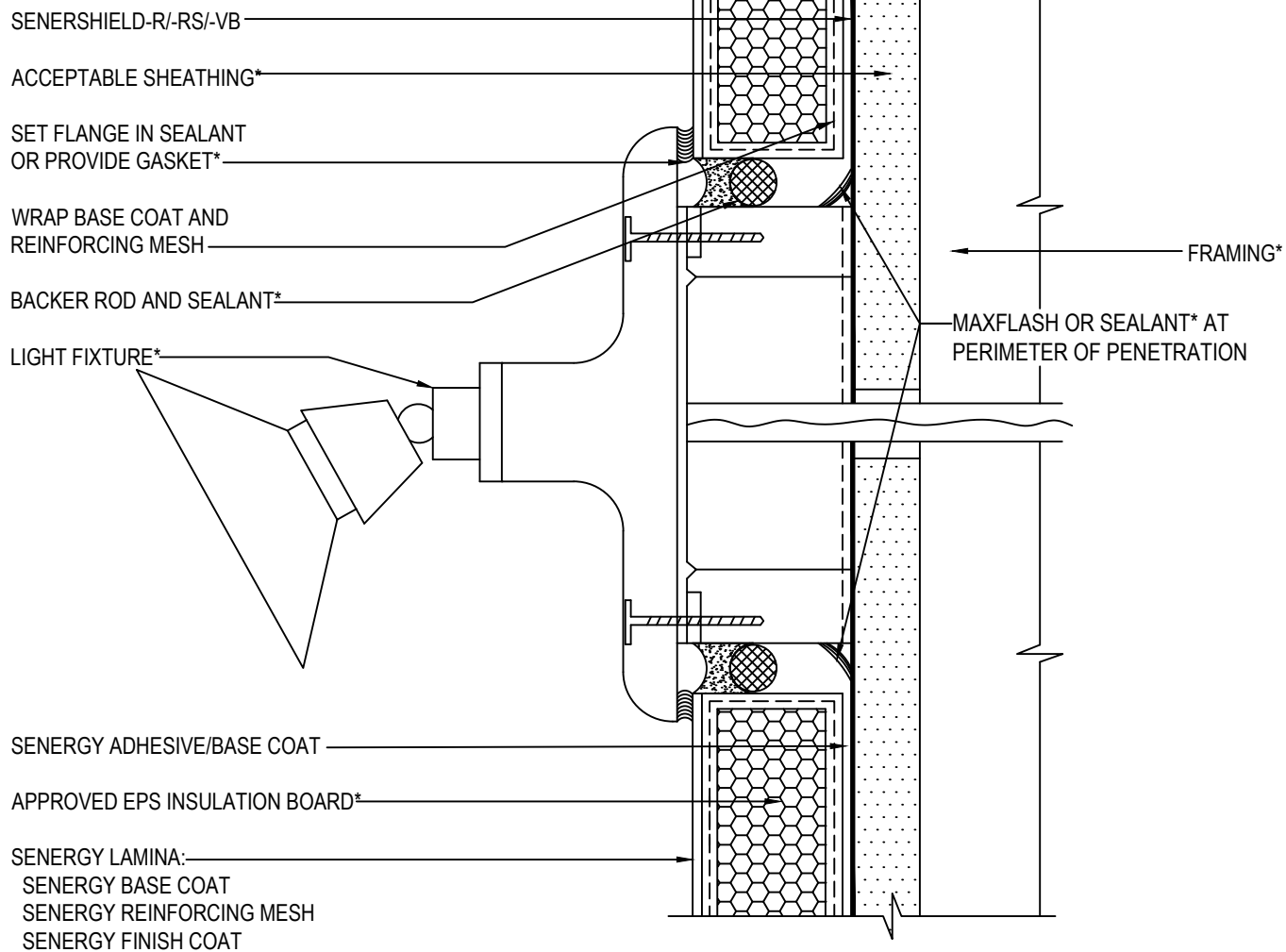
## TYPICAL PIPE PENETRATION SENERPANEL CI DESIGN

SCALE: NTS

07

Structure, substrates, flashing, and other items which are not part of the Senergy *SenerPanel CI System* are the responsibility of others. This detail is subject to change without notice. Senergy accepts no liability for the end use of this detail. For conditions not shown, consult Senergy Technical Services for review of specific detail.

Senergy®



NOTE: DO NOT APPLY FINISH INTO JOINT RECEIVE SEALANT

\*BY OTHERS

REV 230330

## TYPICAL LIGHT FIXTURE SENERPANEL CI DESIGN

SCALE: NTS

08

Structure, substrates, flashing, and other items which are not part of the Senergy *SenerPanel CI System* are the responsibility of others. This detail is subject to change without notice. Senergy accepts no liability for the end use of this detail. For conditions not shown, consult Senergy Technical Services for review of specific detail.

**Senergy**<sup>®</sup>

FRAMING\*

ACCEPTABLE SHEATHING\*

SENERSHIELD-R/-RS/-VB

SENERGY ADHESIVE/BASE COAT  
APPLIED TO EPS INSULATION BOARD

APPROVED EPS INSULATION BOARD\*

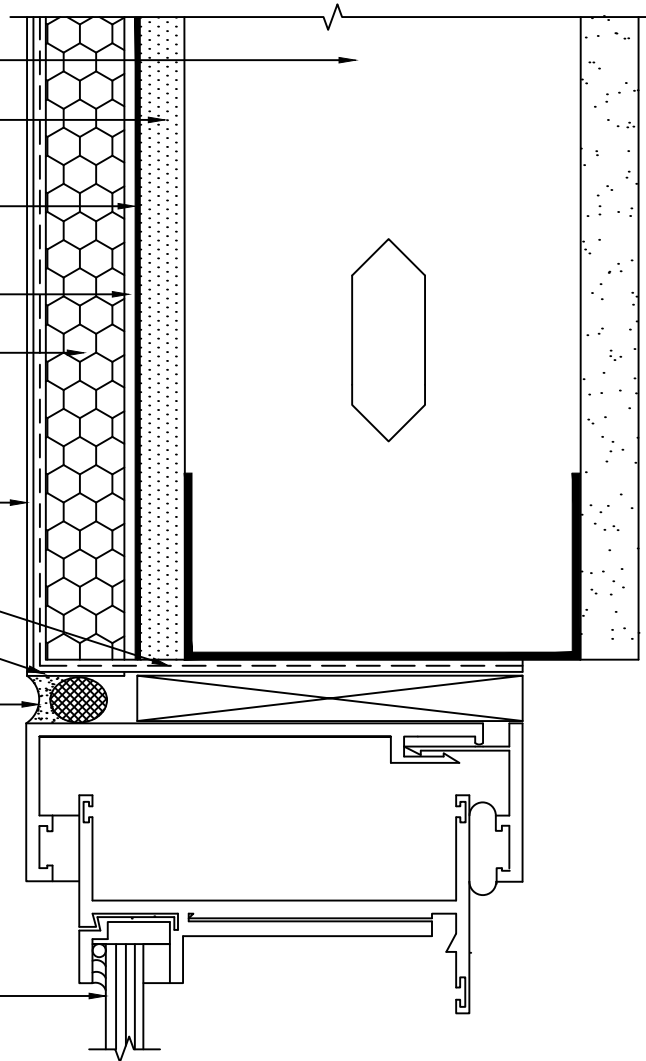
SENERGY LAMINA:  
SENERGY BASE COAT  
SENERGY REINFORCING MESH  
SENERGY FINISH COAT

WRAP BASE COAT AND  
REINFORCING MESH

COLOR COAT

BACKER ROD AND SEALANT\*

WINDOW\*



**NOTE:**

- WRAP SENERSHIELD-R/-RS/-VB INTO ROUGH OPENING ON HEAD IF ALSO INTENDED TO BE AN AIR BARRIER.
- DO NOT APPLY FINISH INTO JOINT RECEIVE SEALANT

\*BY OTHERS

REV 230330

## TYPICAL WINDOW HEAD (FLUSH)

### SENERPANEL CI DESIGN

SCALE: NTS

# 09

Structure, substrates, flashing, and other items which are not part of the Senergy *SenerPanel CI System* are the responsibility of others. This detail is subject to change without notice. Senergy accepts no liability for the end use of this detail. For conditions not shown, consult Senergy Technical Services for review of specific detail.

SENERGY LAMINA:  
 SENERGY BASE COAT  
 SENERGY REINFORCING MESH  
 SENERGY FINISH COAT

ACCEPTABLE SHEATHING\*

SENERSHIELD-R/-RS/-VB

SENERGY ADHESIVE / BASE COAT  
 APPLIED TO EPS INSULATION

APPROVED EPS INSULATION BOARD\*

FRAMING\*

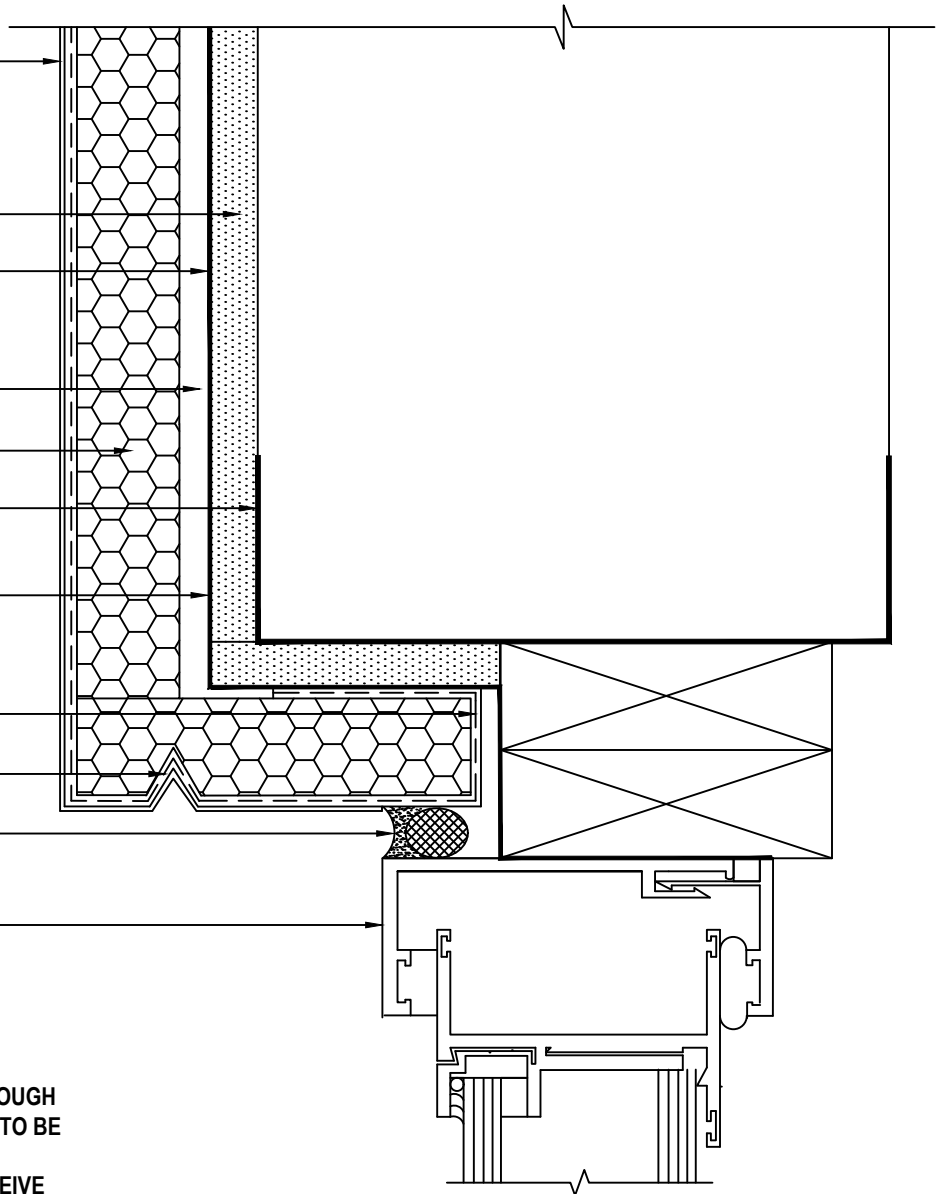
MAXFLASH OR SHEATHING FABRIC  
 EMBEDDED IN SENERSHIELD-R/-RS/-VB

WRAP BASE COAT AND  
 REINFORCING MESH

DRIP

BACKER ROD AND SEALANT\*

WINDOW\*



**NOTE:**  
 - WRAP SENERSHIELD-R/-RS/-VB INTO ROUGH  
 OPENING ON HEAD IF ALSO INTENDED TO BE  
 AN AIR BARRIER.  
 - DO NOT APPLY FINISH INTO JOINT RECEIVE  
 SEALANT

\*BY OTHERS

REV 230330

## TYPICAL WINDOW HEAD (RECESSED)

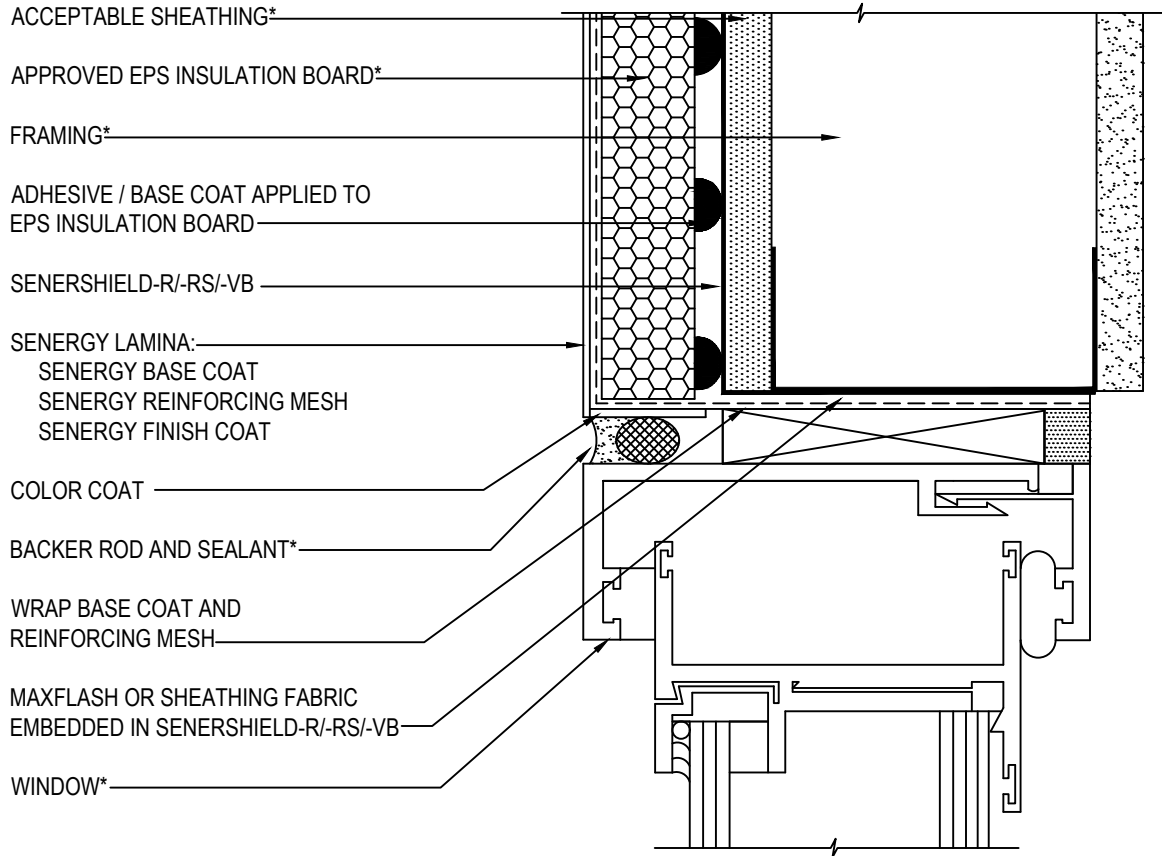
### SENERPANEL CI DESIGN

SCALE: NTS

10

Structure, substrates, flashing, and other items which are not part of the Senergy *SenerPanel CI System* are the responsibility of others. This detail is subject to change without notice. Senergy accepts no liability for the end use of this detail. For conditions not shown, consult Senergy Technical Services for review of specific detail.

**Senergy®**



NOTE: DO NOT APPLY FINISH INTO JOINT RECEIVE SEALANT

\*BY OTHERS

REV 230330

## TYPICAL WINDOW JAMB (FLUSH)

### SENERPANEL CI DESIGN

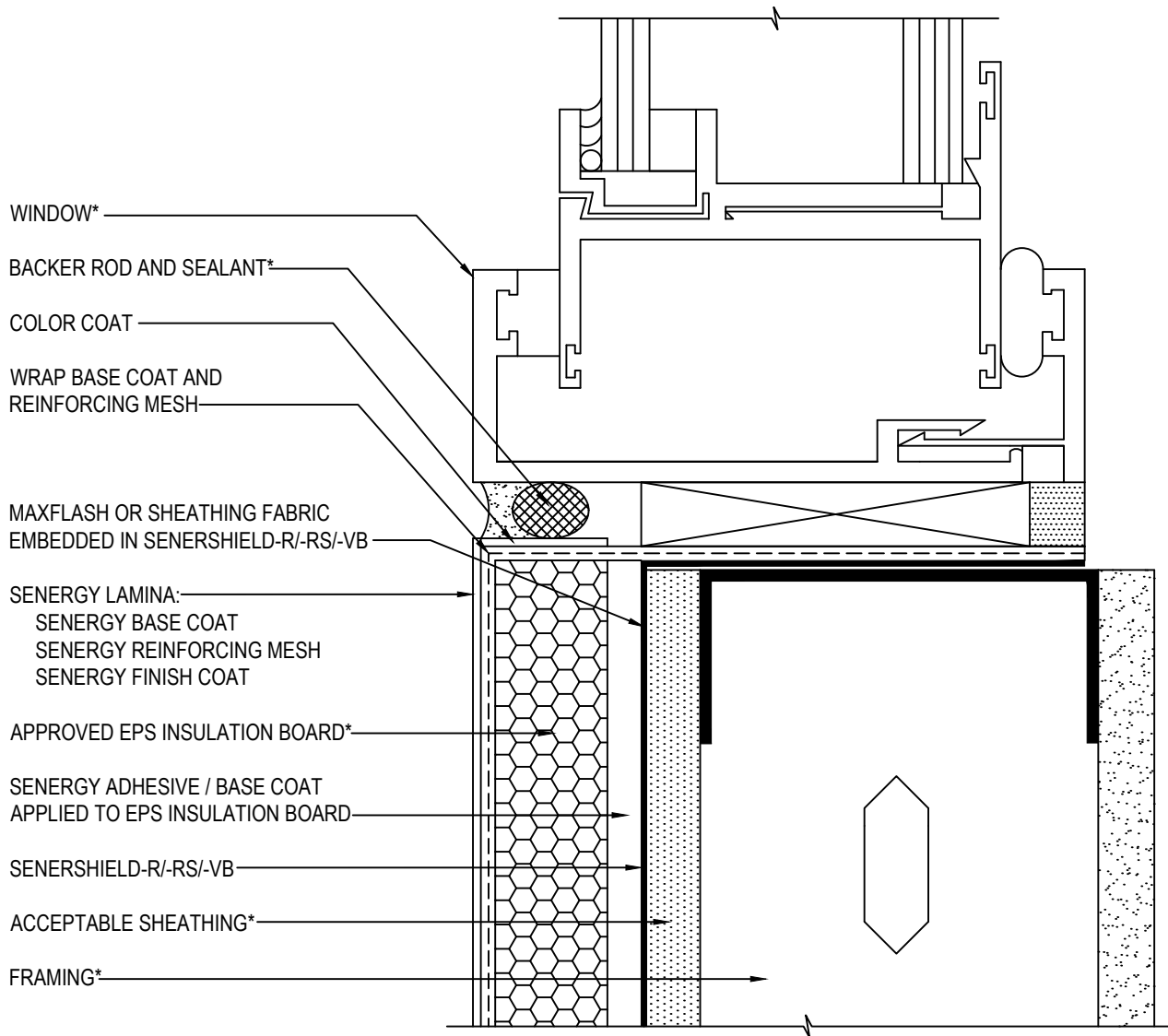
SCALE: NTS

11

Structure, substrates, flashing, and other items which are not part of the Senergy *SenerPanel CI System* are the responsibility of others. This detail is subject to change without notice. Senergy accepts no liability for the end use of this detail. For conditions not shown, consult Senergy Technical Services for review of specific detail.

**Senergy**<sup>®</sup>





NOTE: DO NOT APPLY FINISH INTO JOINT RECEIVE SEALANT

\*BY OTHERS

REV 230330

## TYPICAL WINDOW SILL DETAIL (FLUSH)

### SENERPANEL CI DESIGN

SCALE: NTS

12

Structure, substrates, flashing, and other items which are not part of the Senergy *SenerPanel CI System* are the responsibility of others. This detail is subject to change without notice. Senergy accepts no liability for the end use of this detail. For conditions not shown, consult Senergy Technical Services for review of specific detail.

**Senergy®**

FRAMING\*

ACCEPTABLE SHEATHING\*

APPROVED EPS INSULATION BOARD\*

SENERSHIELD-R/-RS/-VB

SENERGY ADHESIVE / BASE COAT  
APPLIED TO EPS INSULATION BOARD

SENERGY LAMINA:  
SENERGY BASE COAT  
SENERGY REINFORCING MESH  
SENERGY FINISH COAT

MAXFLASH OR SHEATHING FABRIC  
EMBEDDED IN SENERSHIELD-R/-RS/-VB

WRAP BASE COAT AND  
REINFORCING MESH

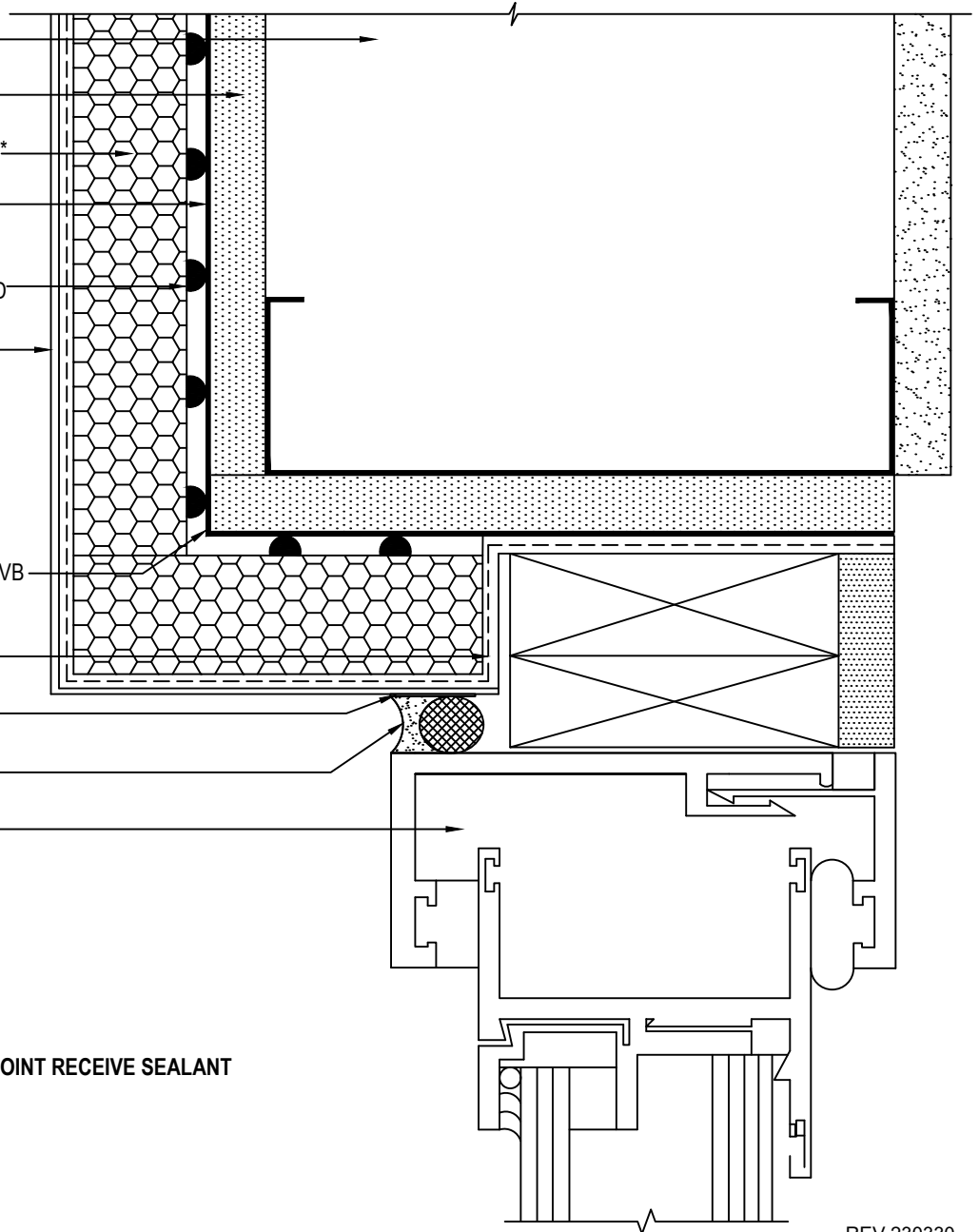
COLOR COAT

BACKER ROD AND SEALANT\*

WINDOW\*

NOTE: DO NOT APPLY FINISH INTO JOINT RECEIVE SEALANT

\*BY OTHERS



REV 230330

## TYPICAL WINDOW JAMB (RECESSED)

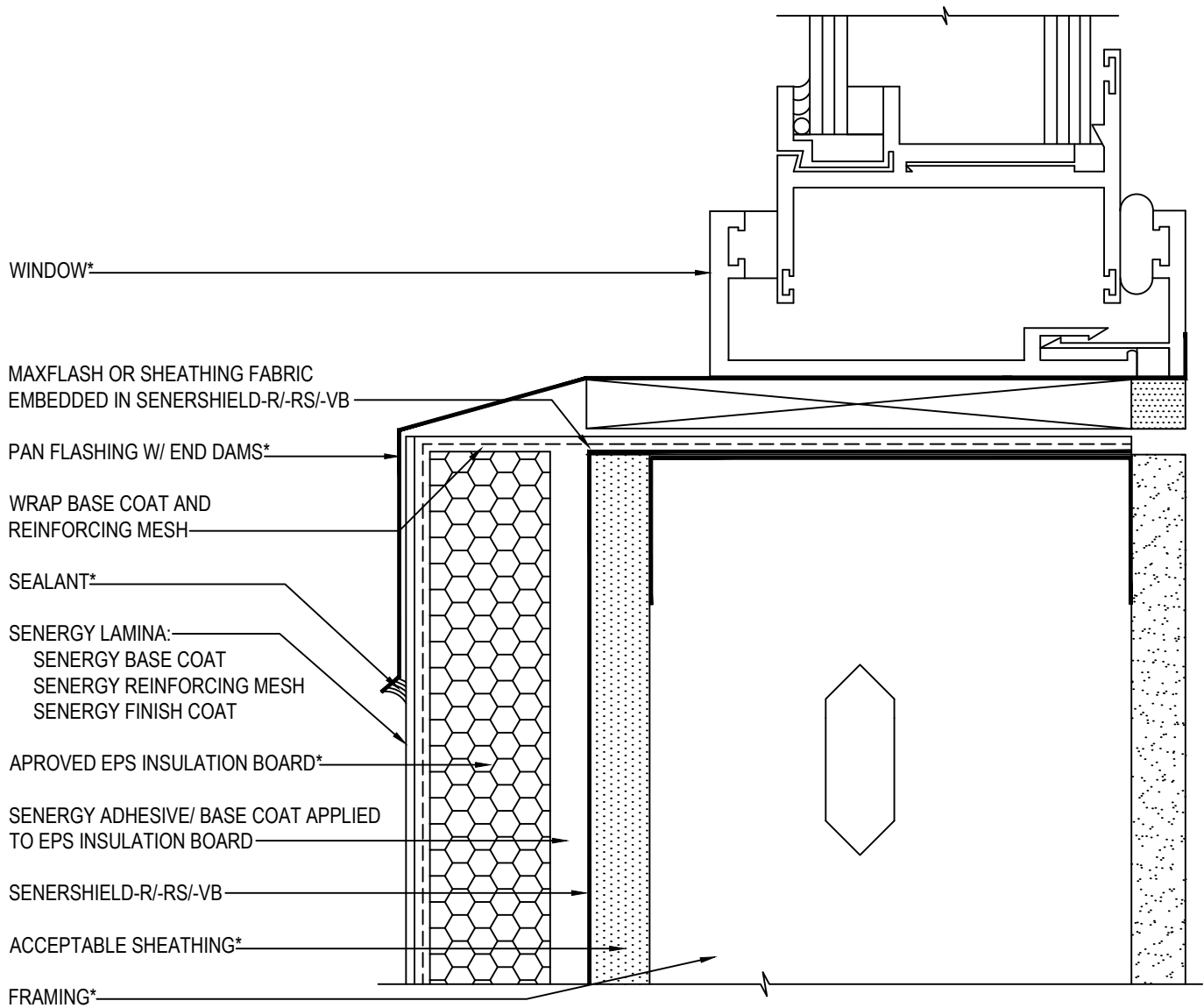
### SENERPANEL CI DESIGN

SCALE: NTS

# 13

Structure, substrates, flashing, and other items which are not part of the Senergy *SenerPanel CI System* are the responsibility of others. This detail is subject to change without notice. Senergy accepts no liability for the end use of this detail. For conditions not shown, consult Senergy Technical Services for review of specific detail.

# **Senergy**<sup>®</sup>



**NOTE:**  
 -EXTEND FLASHING MIN 2" (50 mm) OVER EIFS

\*BY OTHERS

REV 230330

## TYPICAL WINDOW SILL DETAIL (RECESSED)

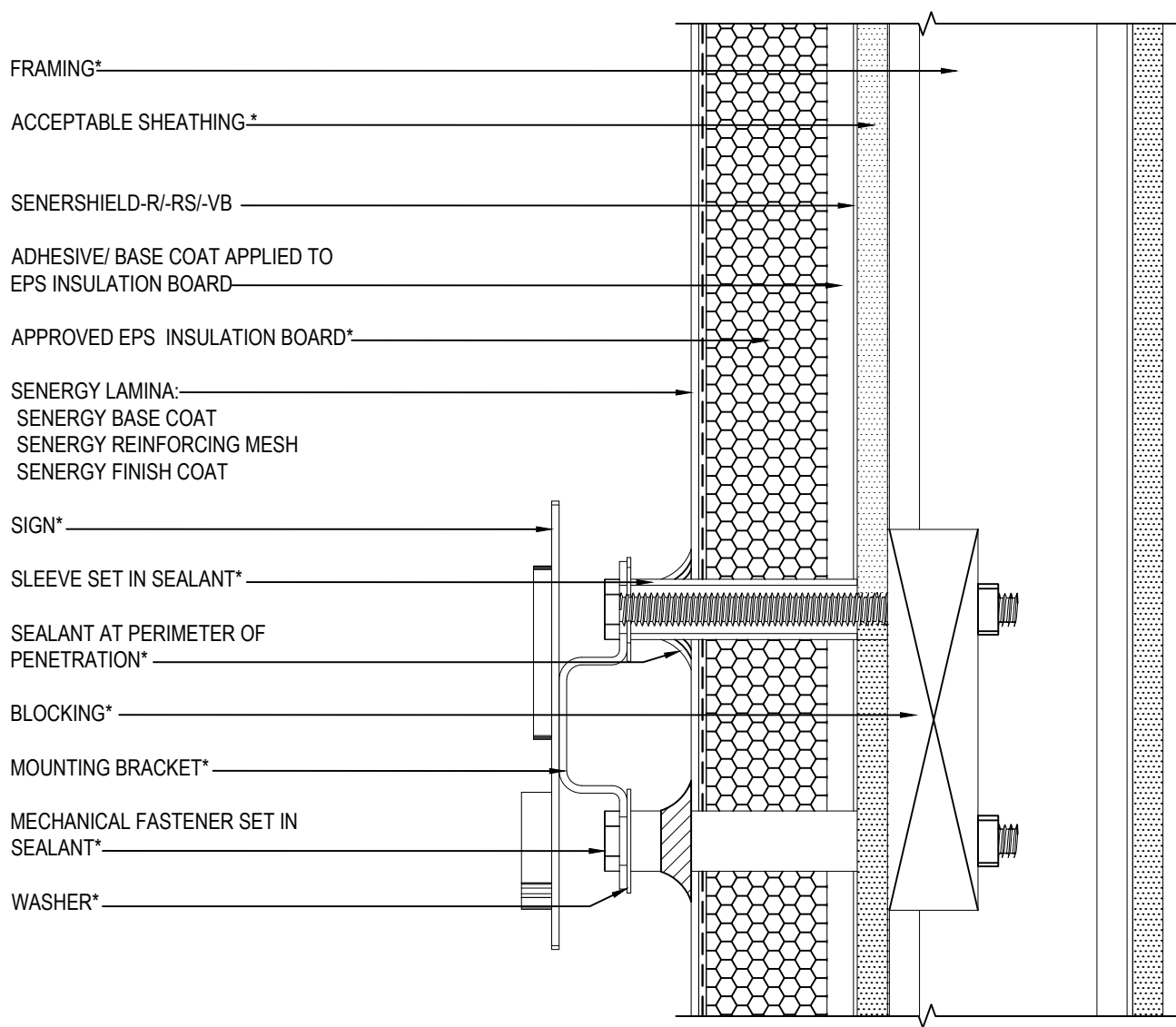
### SENERPANEL CI DESIGN

SCALE: NTS

14

Structure, substrates, flashing, and other items which are not part of the Senenergy *SenerPanel CI System* are the responsibility of others. This detail is subject to change without notice. Senenergy accepts no liability for the end use of this detail. For conditions not shown, consult Senenergy Technical Services for review of specific detail.

**Senenergy**<sup>®</sup>



\*BY OTHERS

REV 230330

## TYPICAL SIGN ATTACHMENT SENERPANEL CI DESIGN

SCALE: NTS  
**15**

Structure, substrates, flashing, and other items which are not part of the Senergy *SenerPanel CI System* are the responsibility of others. This detail is subject to change without notice. Senergy accepts no liability for the end use of this detail. For conditions not shown, consult Senergy Technical Services for review of specific detail.

