

The Senergy logo is positioned in the top right corner of the page. It features the word "Senergy" in a bold, blue, sans-serif font, with a registered trademark symbol (®) to its upper right. The background of the entire page is a low-angle photograph of a modern building's facade, showing a grid of grey panels and windows with some windows partially covered by orange panels.

SenerPanel CI-D

Typical Details

A brand of
MASTER[®]
» BUILDERS
SOLUTIONS

(THIS PAGE INTENTIONALLY LEFT BLANK)

SenerPanel CI-D

Typical Details

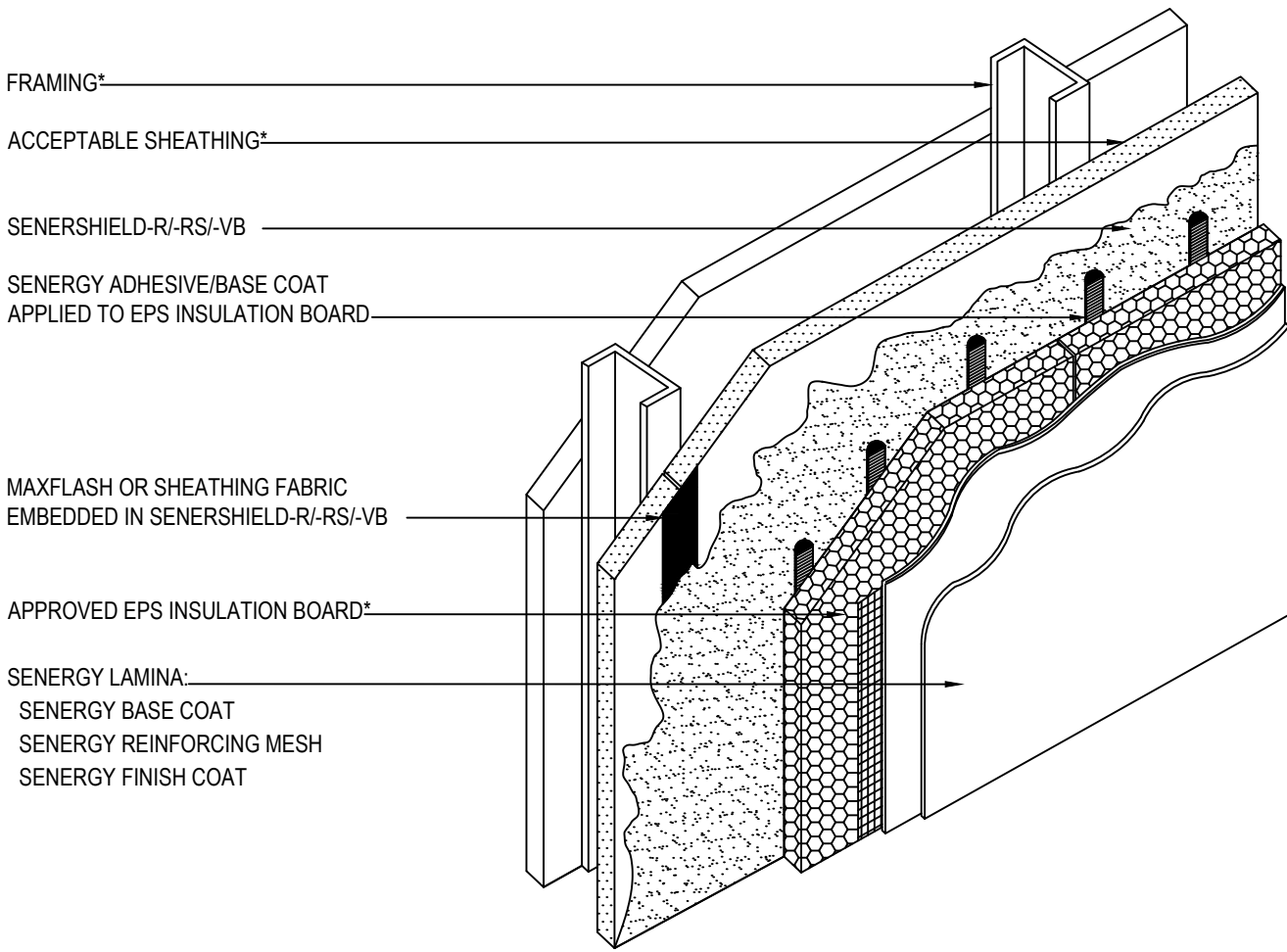
Table of Contents

1 Typical SenerPanel Isometric View	14 Typical Window Jamb (Flush)
2 Typical Channeled Adhesive Pattern	15 Typical Window sill Details (Flush)
3 Typical Vertical Panel to Panel Joint	16 Typical Window Jamb (Recessed)
4 Typical Panel to Panel w/ Concealed Continuous Drainage Provisions	17 Typical Window Sill (Recessed)
5 Typical Inside Corner Application	
6 Typical Outside Corner Application	
7 Typical Aesthetic Groove	
8 Typical Pipe Penetration	
9 Typical Window Head (Flush)	
10 Typical Window Head (Flush) with Weep Tubes	
11 Typical Window Head (Flush) with Diverter Track	
12 Typical Window Head (Recessed)	
13 Typical Window Head (Recessed) W/Diverter Track	

Notes:

- Unsatisfactory conditions shall be reported to the General Contractor and corrected before the application of Master Builders Solutions- Wall Systems products.
- Install Master Builders Solutions materials in accordance with current installation instructions.
- The details within represent Master Builders Solutions- Wall Systems latest recommendations. They are presented in good faith by Master Builders Solutions- Wall Systems . The details are subject to change without notice. Master Builders Solutions- Wall Systems accepts no liability for the end use of the details. For conditions not shown, Master Builders Solutions- Wall Systems for review of specific detail.

(THIS PAGE INTENTIONALLY LEFT BLANK)



*BY OTHERS

REV 230327

TYPICAL SENERPANEL ISOMETRIC VIEW

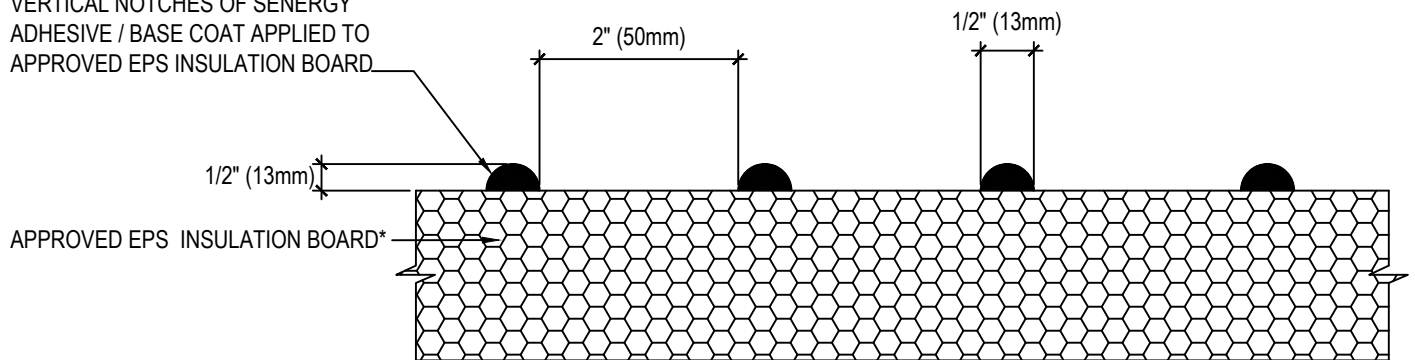
SENERPANEL CI-D DESIGN

SCALE: NTS
01

Structure, substrates, flashing, and other items which are not part of the Senergy SenerPanel CI-D System are the responsibility of others. This detail is subject to change without notice. Senergy accepts no liability for the end use of this detail. For conditions not shown, consult Senergy Technical Services for review of specific detail.



VERTICAL NOTCHES OF SENERGY
ADHESIVE / BASE COAT APPLIED TO
APPROVED EPS INSULATION BOARD



*BY OTHERS

REV 230327

TYPICAL CHanneled ADHESIVE PATTERN SENERPANEL CI-D DESIGN

SCALE: NTS

02

Structure, substrates, flashing, and other items which are not part of the Senergy *SenerPanel CI-D System* are the responsibility of others. This detail is subject to change without notice. Senergy accepts no liability for the end use of this detail. For conditions not shown, consult Senergy Technical Services for review of specific detail.

Senergy[®]

ACCEPTABLE SHEATHING*

SENERSHIELD-R/-RS/-VB

SENERGY ADHESIVE/BASE COAT
APPLIED TO EPS INSULATION BOARD

FRAMING*

APPROVED EPS INSULATION BOARD*

BACKER ROD AND SEALANT*

WIDTH PER DESIGN

WRAP BASE COAT AND
REINFORCING MESH

WRAP SHEATHING FABRIC EMBEDDED
IN SENERSHIELD-R/-RS/-VB

SENERGY LAMINA:
SENERGY BASE COAT
SENERGY REINFORCING MESH
SENERGY FINISH COAT

(PLAN VIEW)

NOTE: DO NOT APPLY FINISH INTO JOINT TO RECEIVE SEALANT

*BY OTHERS

REV 230327

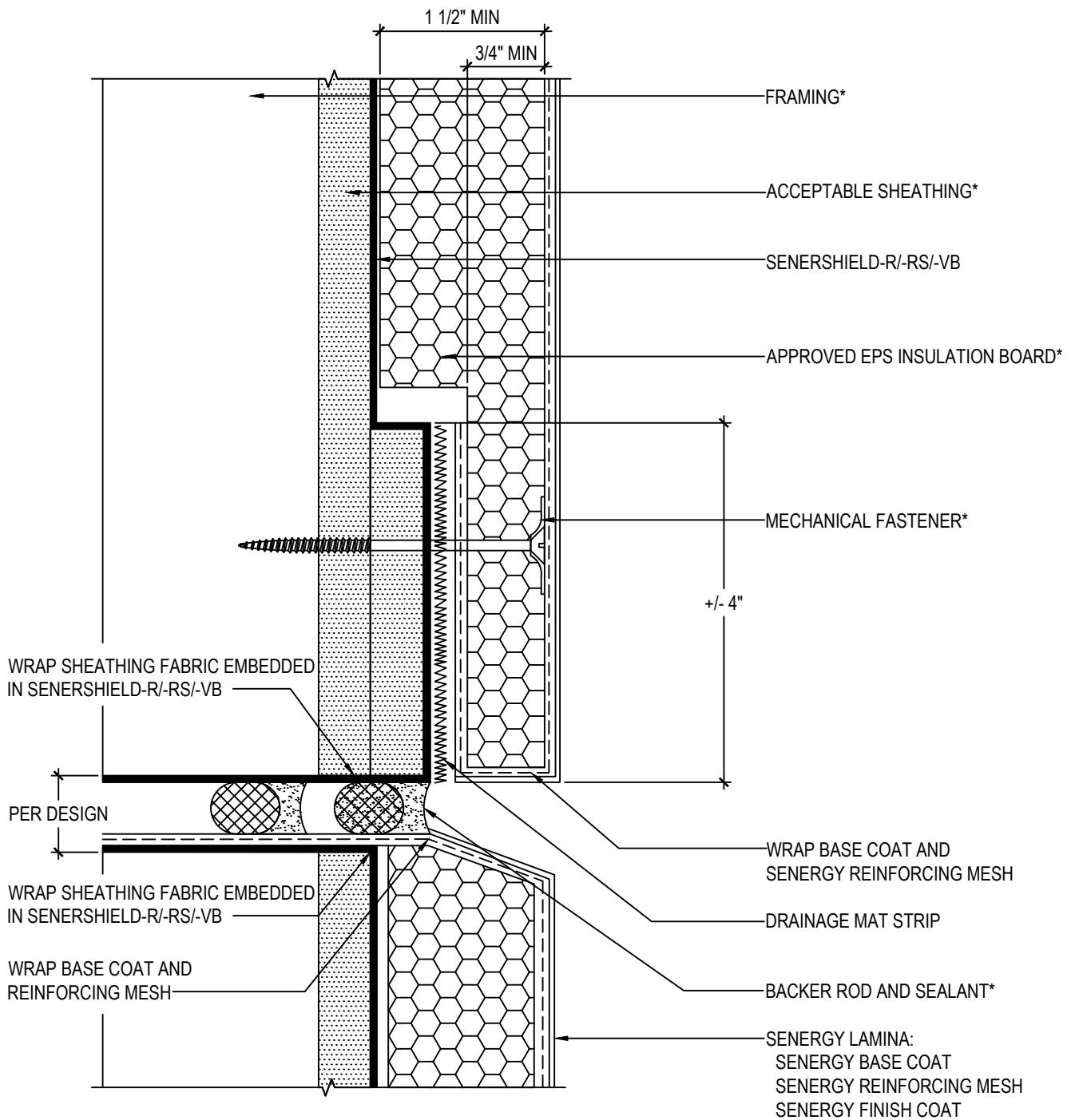
TYPICAL VERTICAL PANEL TO PANEL JOINT SENERPANEL CI-D DESIGN

SCALE: NTS

03

Structure, substrates, flashing, and other items which are not part of the Senergy SenerPanel CI-D System are the responsibility of others. This detail is subject to change without notice. Senergy accepts no liability for the end use of this detail. For conditions not shown, consult Senergy Technical Services for review of specific detail.

Senergy®



NOTE: DO NOT APPLY FINISH INTO JOINT TO RECEIVE SEALANT

*BY OTHERS

REV 230327

TYPICAL PANEL TO PANEL W/ CONCEALED CONTINUOUS DRAINAGE PROVISIONS

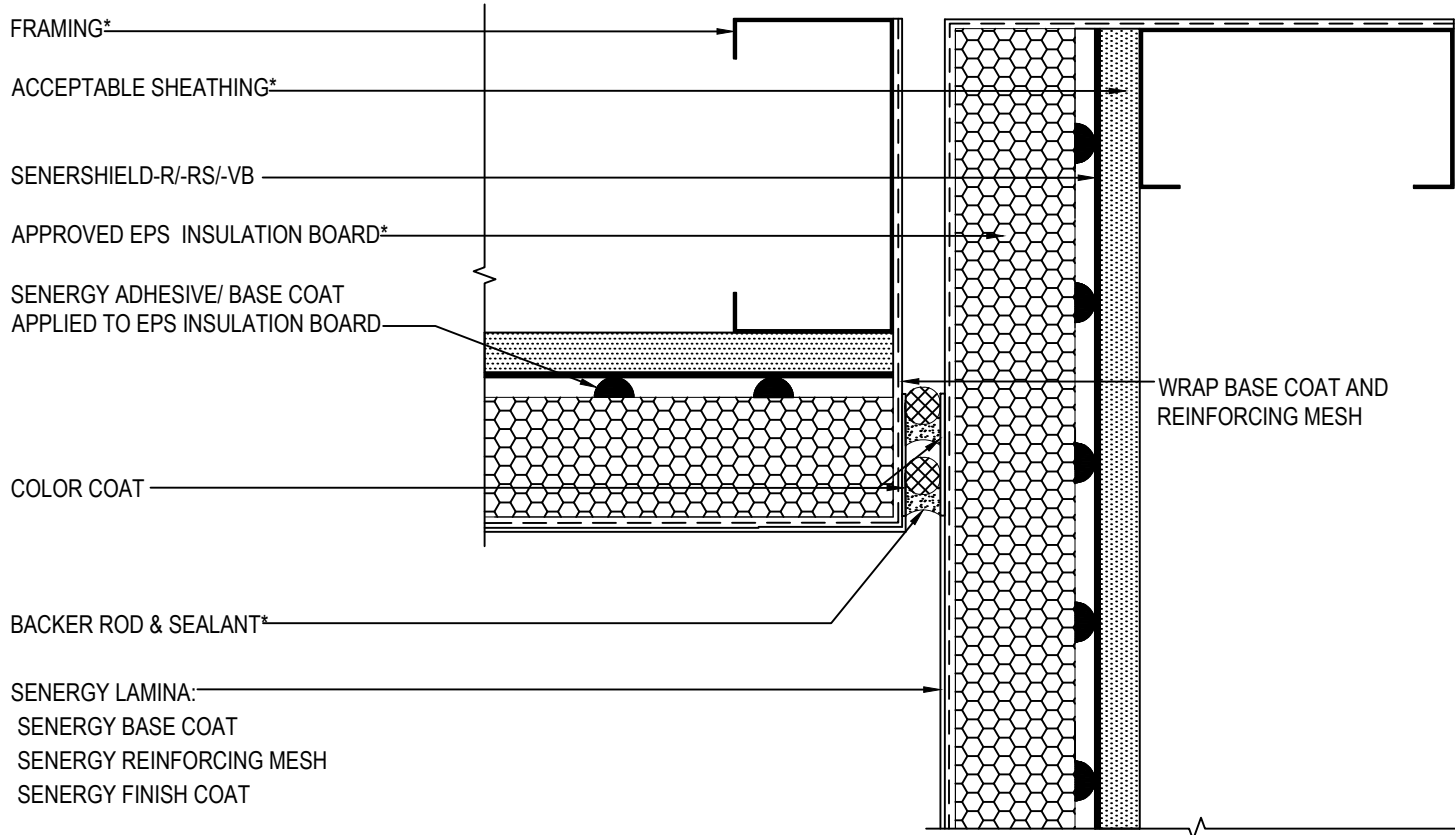
SENERPANEL CI-D DESIGN

SCALE: NTS

04

Structure, substrates, flashing, and other items which are not part of the Senergy SenerPanel CI-D System are the responsibility of others. This detail is subject to change without notice. Senergy accepts no liability for the end use of this detail. For conditions not shown, consult Senergy Technical Services for review of specific detail.

Senergy®



NOTE: DO NOT APPLY FINISH INTO JOINT TO RECEIVE SEALANT

(PLAN VIEW)

*BY OTHERS

REV 230327

TYPICAL INSIDE CORNER APPLICATION SENERPANEL CI-D DESIGN

SCALE: NTS

05

Structure, substrates, flashing, and other items which are not part of the Senergy SenerPanel CI-D System are the responsibility of others. This detail is subject to change without notice. Senergy accepts no liability for the end use of this detail. For conditions not shown, consult Senergy Technical Services for review of specific detail.

Senergy®

FRAMING*

ACCEPTABLE SHEATHING*

SENERSHIELD-R/-RS/-VB

SENERGY ADHESIVE/ BASE COAT
APPLIED TO EPS INSULATION BOARD

APPROVED EPS INSULATION BOARD*

SENERGY LAMINA:
SENERGY BASE COAT
SENERGY REINFORCING MESH
SENERGY FINISH COAT

COLOR COAT

BACKER ROD & SEALANT*

(PLAN VIEW)

NOTE: DO NOT APPLY FINISH INTO JOINT TO RECEIVE SEALANT

*BY OTHERS

REV 230327

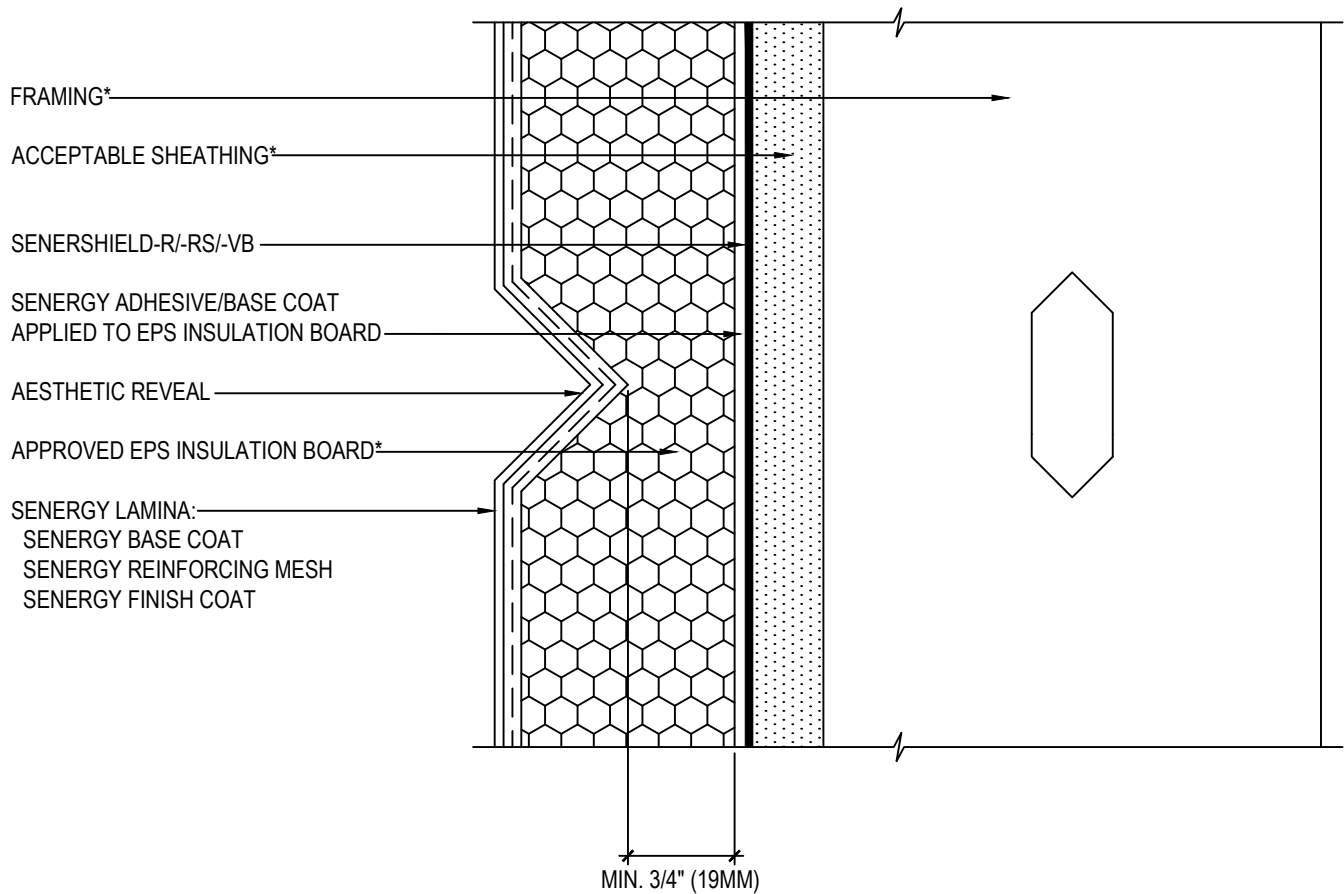
TYPICAL OUTSIDE CORNER APPLICATION SENERPANEL CI-D DESIGN

SCALE: NTS

06

Structure, substrates, flashing, and other items which are not part of the Senergy SenerPanel CI-D System are the responsibility of others. This detail is subject to change without notice. Senergy accepts no liability for the end use of this detail. For conditions not shown, consult Senergy Technical Services for review of specific detail.

Senergy®



*BY OTHERS

REV 230327

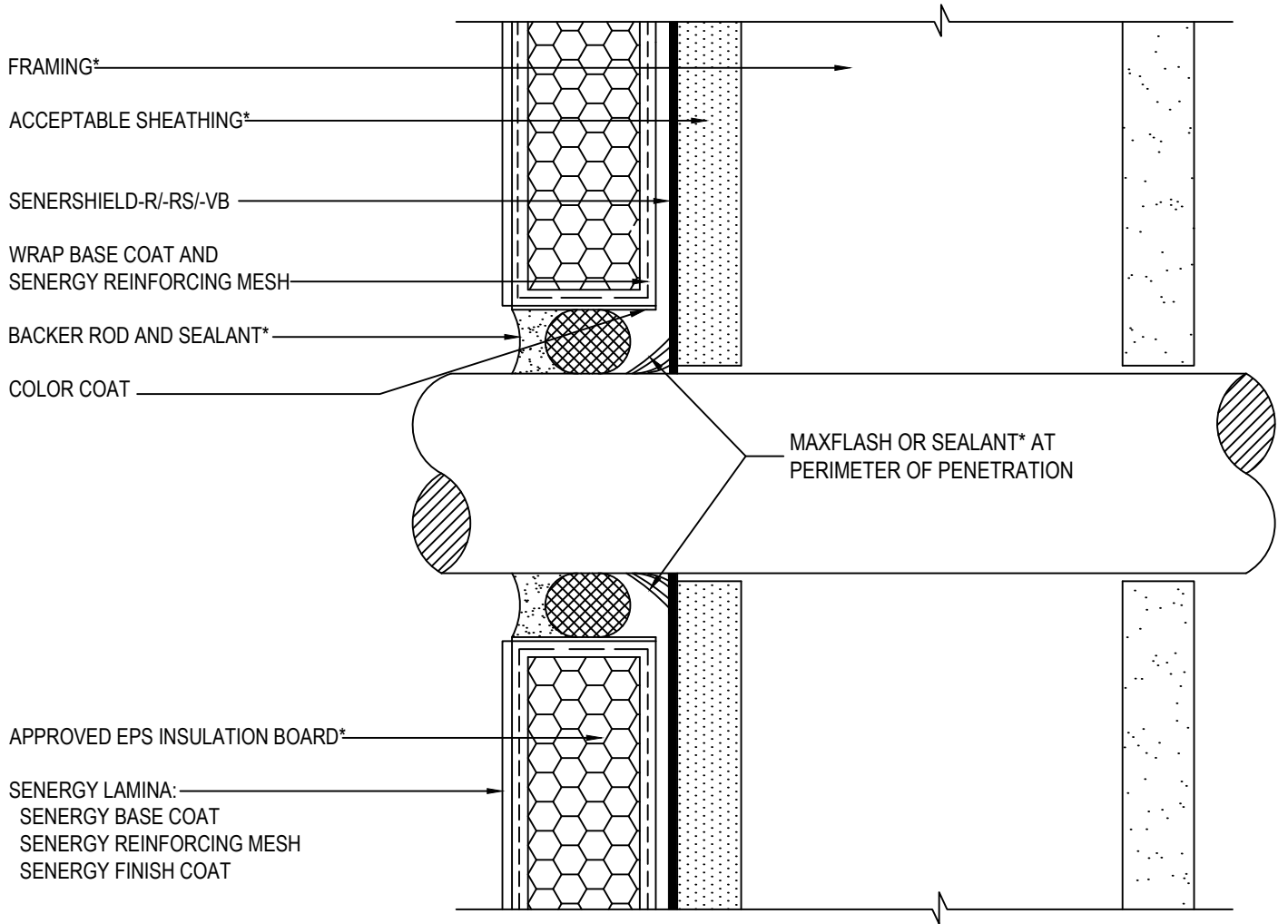
TYPICAL AESTHETIC GROOVE SENERPANEL CI-D DESIGN

SCALE: NTS

07

Structure, substrates, flashing, and other items which are not part of the Senergy SenerPanel CI-D System are the responsibility of others. This detail is subject to change without notice. Senergy accepts no liability for the end use of this detail. For conditions not shown, consult Senergy Technical Services for review of specific detail.

Senergy[®]



NOTE:
 - ADD FRAMING AS NECESSARY TO SUPPORT PENETRATION
 - DO NOT APPLY FINISH INTO JOINT TO RECEIVE SEALANT

*BY OTHERS

REV 230327

TYPICAL PIPE PENETRATION SENERPANEL CI-D DESIGN

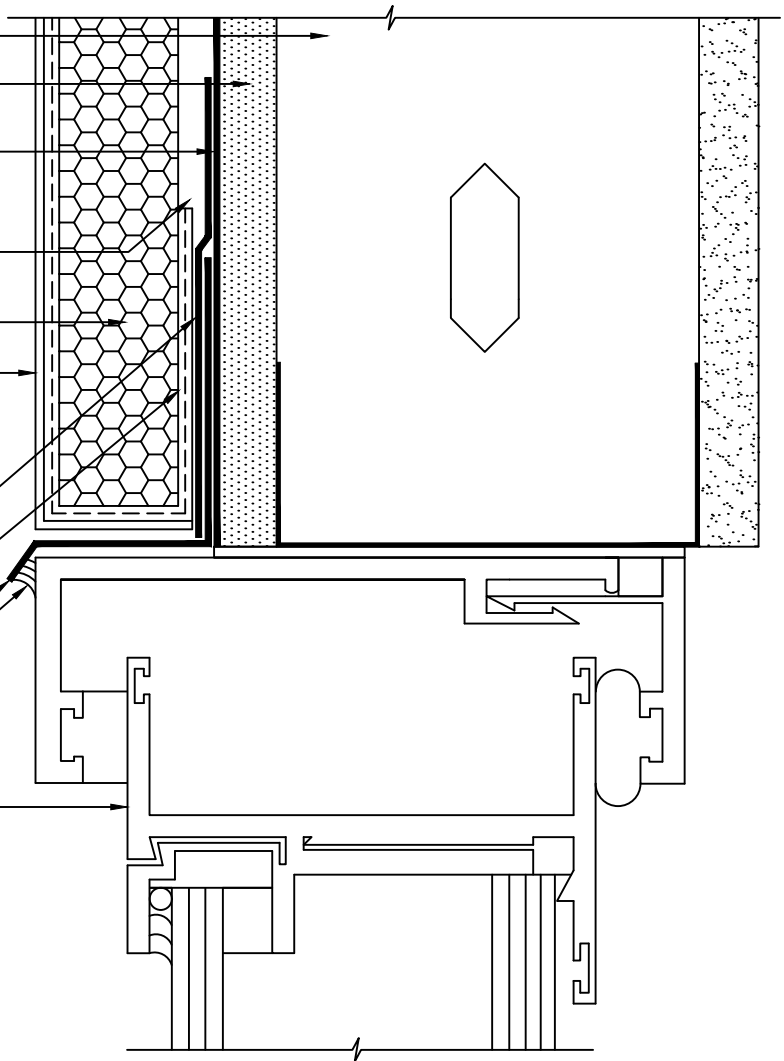
SCALE: NTS

08

Structure, substrates, flashing, and other items which are not part of the Senergy SenerPanel CI-D System are the responsibility of others. This detail is subject to change without notice. Senergy accepts no liability for the end use of this detail. For conditions not shown, consult Senergy Technical Services for review of specific detail.

Senergy®

- FRAMING*
- ACCEPTABLE SHEATHING*
- SENERSHIELD-R/-RS/-VB
- SENERGY ADHESIVE/BASE COAT
APPLIED TO EPS INSULATION BOARD
- APPROVED EPS INSULATION BOARD*
- SENERGY LAMINA:
SENERGY BASE COAT
SENERGY REINFORCING MESH
SENERGY FINISH COAT
- MAXFLASH OR SHEATHING FABRIC
EMBEDDED IN SENERSHIELD-R/-RS/-VB
- WRAP SENERGY BASE COAT AND
SENERGY REINFORCING MESH
- FLASHING*
- SEALANT*
- WINDOW*



NOTE:
 - WRAP SENERSHIELD-R/ -RS/ -VB INTO ROUGH
 OPENING ON HEAD IF ALSO INTENDED TO BE
 AN AIR BARRIER.
 - PROVIDE END DAMS ON FLASHING*

*BY OTHERS

REV 230327

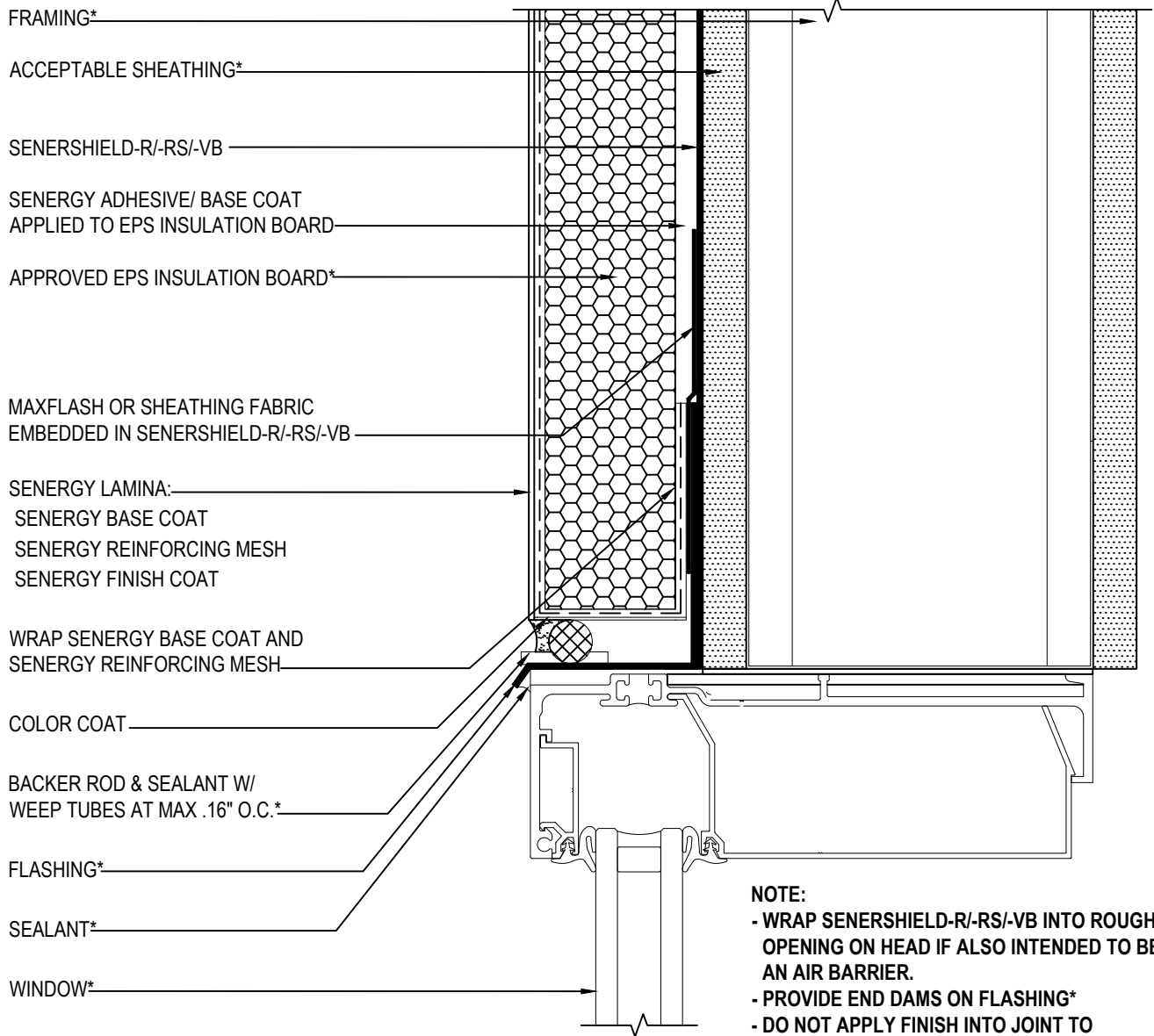
TYPICAL WINDOW HEAD (FLUSH) SENERPANEL CI-D DESIGN

SCALE: NTS

09

Structure, substrates, flashing, and other items which are not part of the Senergy SenerPanel CI-D System are the responsibility of others. This detail is subject to change without notice. Senergy accepts no liability for the end use of this detail. For conditions not shown, consult Senergy Technical Services for review of specific detail.

Senergy®



NOTE:

- WRAP SENERSHIELD-R/-RS/-VB INTO ROUGH OPENING ON HEAD IF ALSO INTENDED TO BE AN AIR BARRIER.
- PROVIDE END DAMS ON FLASHING*
- DO NOT APPLY FINISH INTO JOINT TO RECEIVE SEALANT

*BY OTHERS

REV 230327

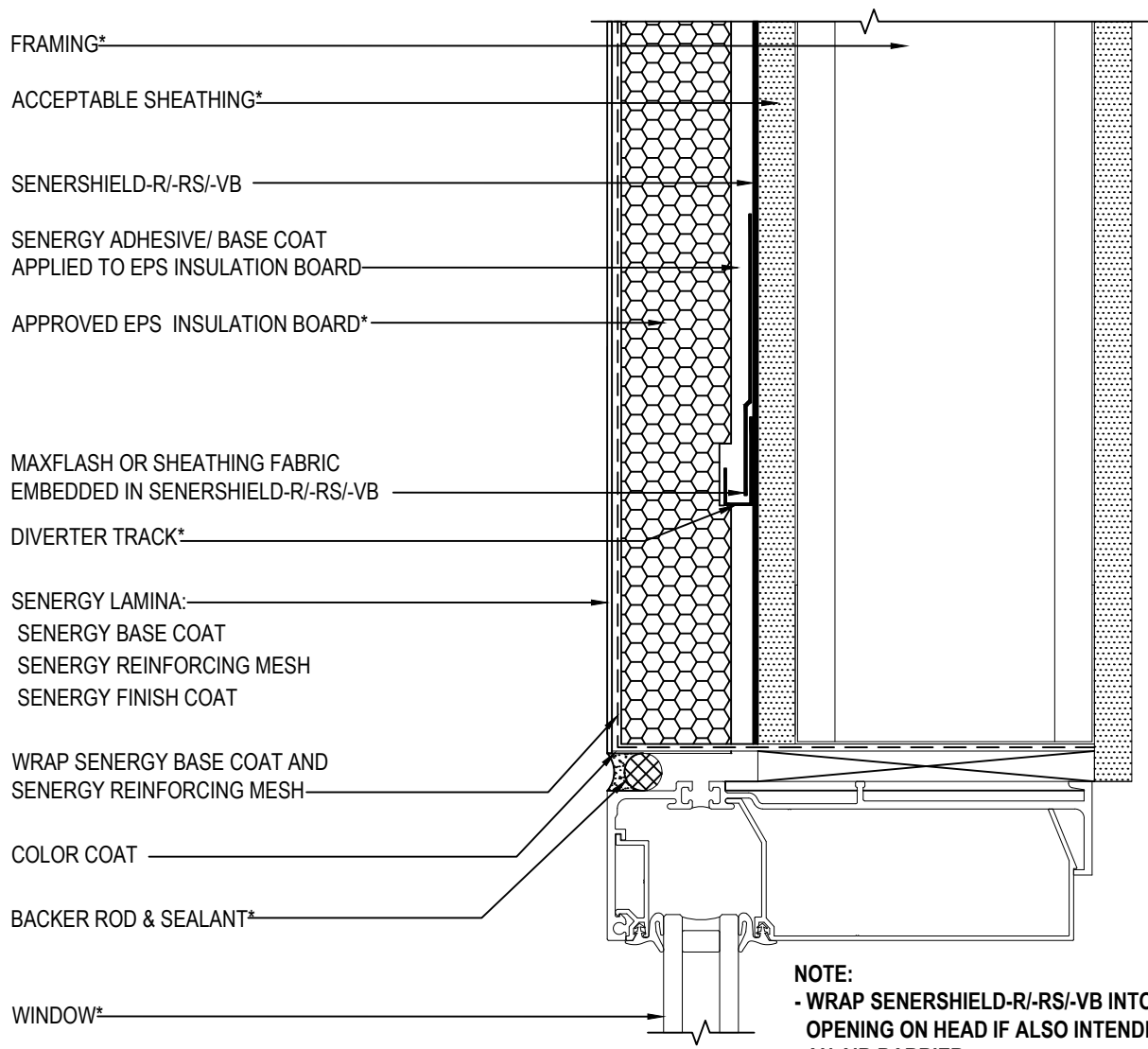
TYPICAL WINDOW HEAD (FLUSH) WITH WEEP TUBES SENERPANEL CI-D DESIGN

SCALE: NTS

10

Structure, substrates, flashing, and other items which are not part of the Senergy SenerPanel CI-D System are the responsibility of others. This detail is subject to change without notice. Senergy accepts no liability for the end use of this detail. For conditions not shown, consult Senergy Technical Services for review of specific detail.

Senergy®



NOTE:
 - WRAP SENERSHIELD-R/-RS/-VB INTO ROUGH OPENING ON HEAD IF ALSO INTENDED TO BE AN AIR BARRIER.
 - DO NOT APPLY FINISH INTO JOINT TO RECEIVE SEALANT

*BY OTHERS

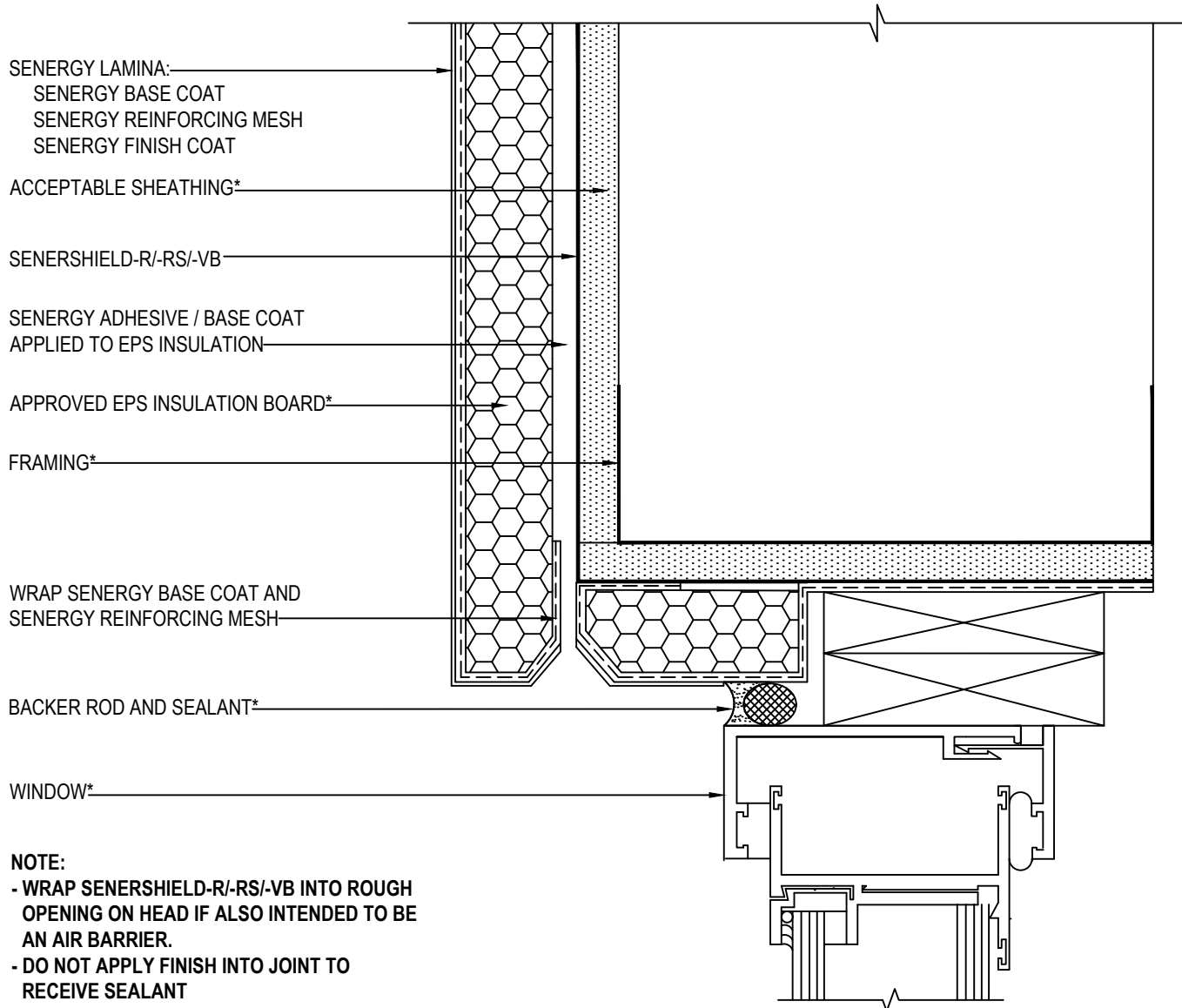
REV 230327

TYPICAL WINDOW HEAD (FLUSH) WITH DIVERTER TRACK SENERPANEL CI-D DESIGN

SCALE: NTS
11

Structure, substrates, flashing, and other items which are not part of the Senergy SenerPanel Ci-D System are the responsibility of others. This detail is subject to change without notice. Senergy accepts no liability for the end use of this detail. For conditions not shown, consult Senergy Technical Services for review of specific detail.





*BY OTHERS

REV 230327

TYPICAL WINDOW HEAD (RECESSED)

SENERPANEL CI-D DESIGN

SCALE: NTS

12

Structure, substrates, flashing, and other items which are not part of the Senergy SenerPanel CI-D System are the responsibility of others. This detail is subject to change without notice. Senergy accepts no liability for the end use of this detail. For conditions not shown, consult Senergy Technical Services for review of specific detail.

Senergy®

SENERGY LAMINA:
 SENERGY BASE COAT
 SENERGY REINFORCING MESH
 SENERGY FINISH COAT

ACCEPTABLE SHEATHING*

MAXFLASH OR SHEATHING FABRIC
 EMBEDDED IN SENERSHIELD-R/-RS/-VB

DIVERTER TRACK*

SENERGY ADHESIVE / BASE COAT
 APPLIED TO EPS INSULATION

APPROVED EPS INSULATION BOARD*

FRAMING*

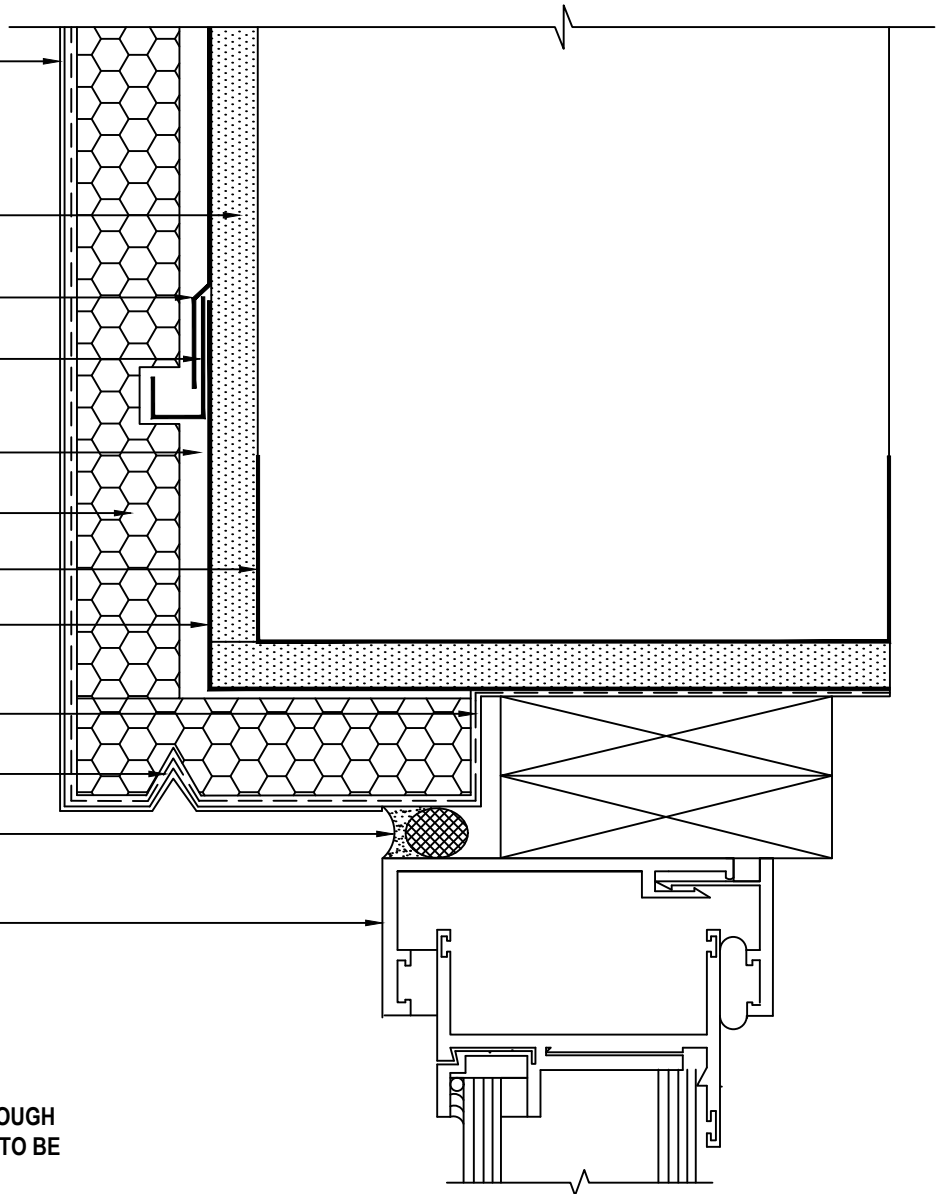
SENERSHIELD-R/-RS/-VB

WRAP SENERGY BASE COAT AND
 SENERGY REINFORCING MESH

DRIP

BACKER ROD AND SEALANT*

WINDOW*



NOTE:

- WRAP SENERSHIELD-R/-RS/-VB INTO ROUGH OPENING ON HEAD IF ALSO INTENDED TO BE AN AIR BARRIER.
- DO NOT APPLY FINISH INTO JOINT TO RECEIVE SEALANT

*BY OTHERS

REV 230327

TYPICAL WINDOW HEAD (RECESSED) W/ DIVERTER TRACK

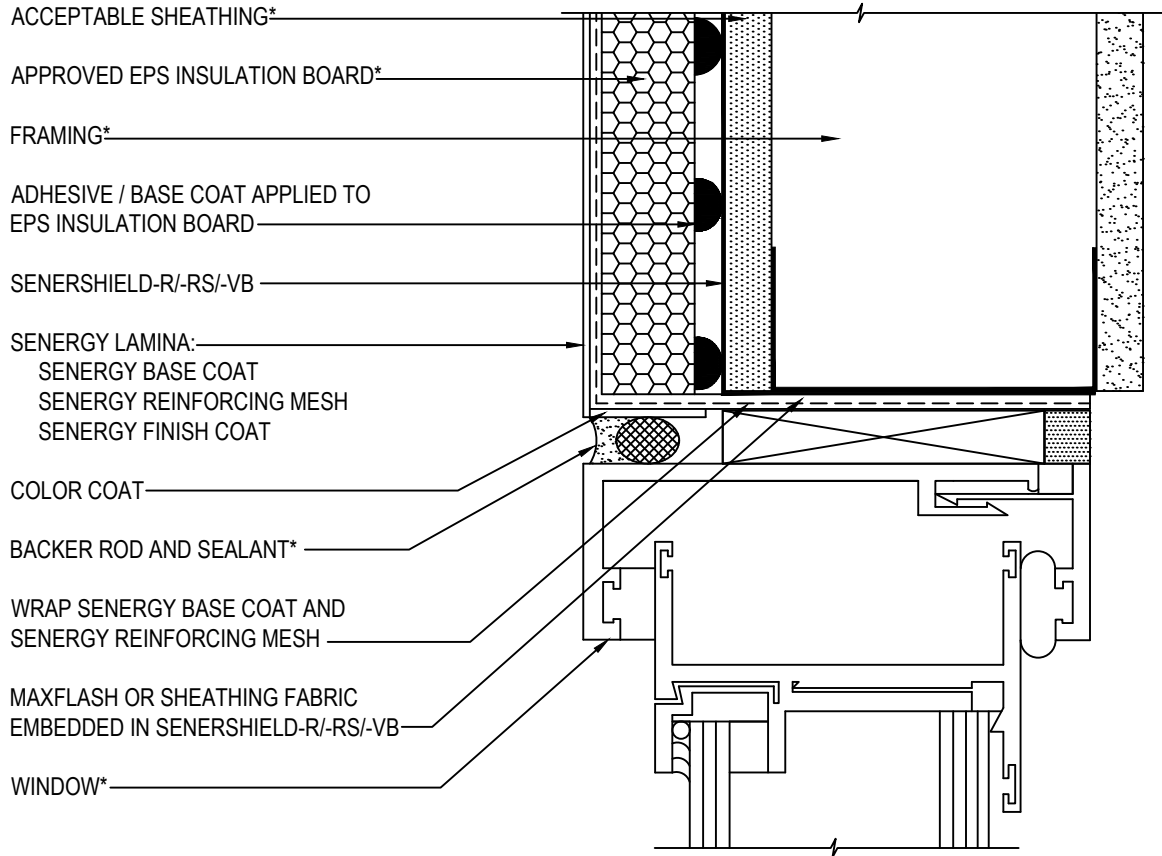
SENERPANEL CI-D DESIGN

SCALE: NTS

13

Structure, substrates, flashing, and other items which are not part of the Senergy SenerPanel CI-D System are the responsibility of others. This detail is subject to change without notice. Senergy accepts no liability for the end use of this detail. For conditions not shown, consult Senergy Technical Services for review of specific detail.

Senergy®



NOTE: DO NOT APPLY FINISH INTO JOINT TO RECEIVE SEALANT

*BY OTHERS

REV 230327

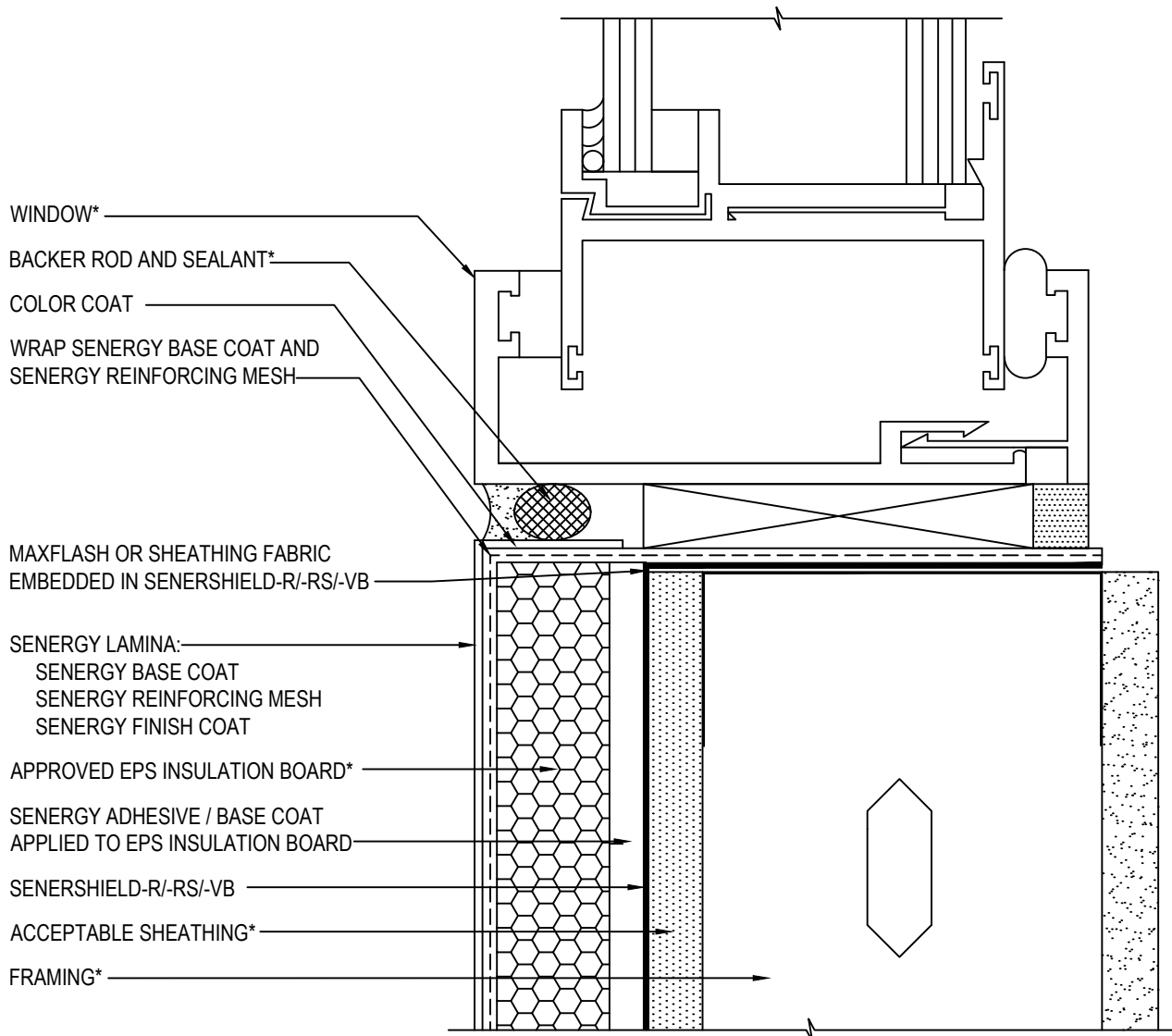
TYPICAL WINDOW JAMB (FLUSH) SENERPANEL CI-D DESIGN

SCALE: NTS

14

Structure, substrates, flashing, and other items which are not part of the Senergy SenerPanel CI-D System are the responsibility of others. This detail is subject to change without notice. Senergy accepts no liability for the end use of this detail. For conditions not shown, consult Senergy Technical Services for review of specific detail.

Senergy®



WINDOW*

BACKER ROD AND SEALANT*

COLOR COAT

WRAP SENERGY BASE COAT AND
SENERGY REINFORCING MESH

MAXFLASH OR SHEATHING FABRIC
EMBEDDED IN SENERSHIELD-R/-RS/-VB

SENERGY LAMINA:
SENERGY BASE COAT
SENERGY REINFORCING MESH
SENERGY FINISH COAT

APPROVED EPS INSULATION BOARD*

SENERGY ADHESIVE / BASE COAT
APPLIED TO EPS INSULATION BOARD

SENERSHIELD-R/-RS/-VB

ACCEPTABLE SHEATHING*

FRAMING*

*BY OTHERS

NOTE: DO NOT APPLY FINISH INTO JOINT TO RECEIVE SEALANT

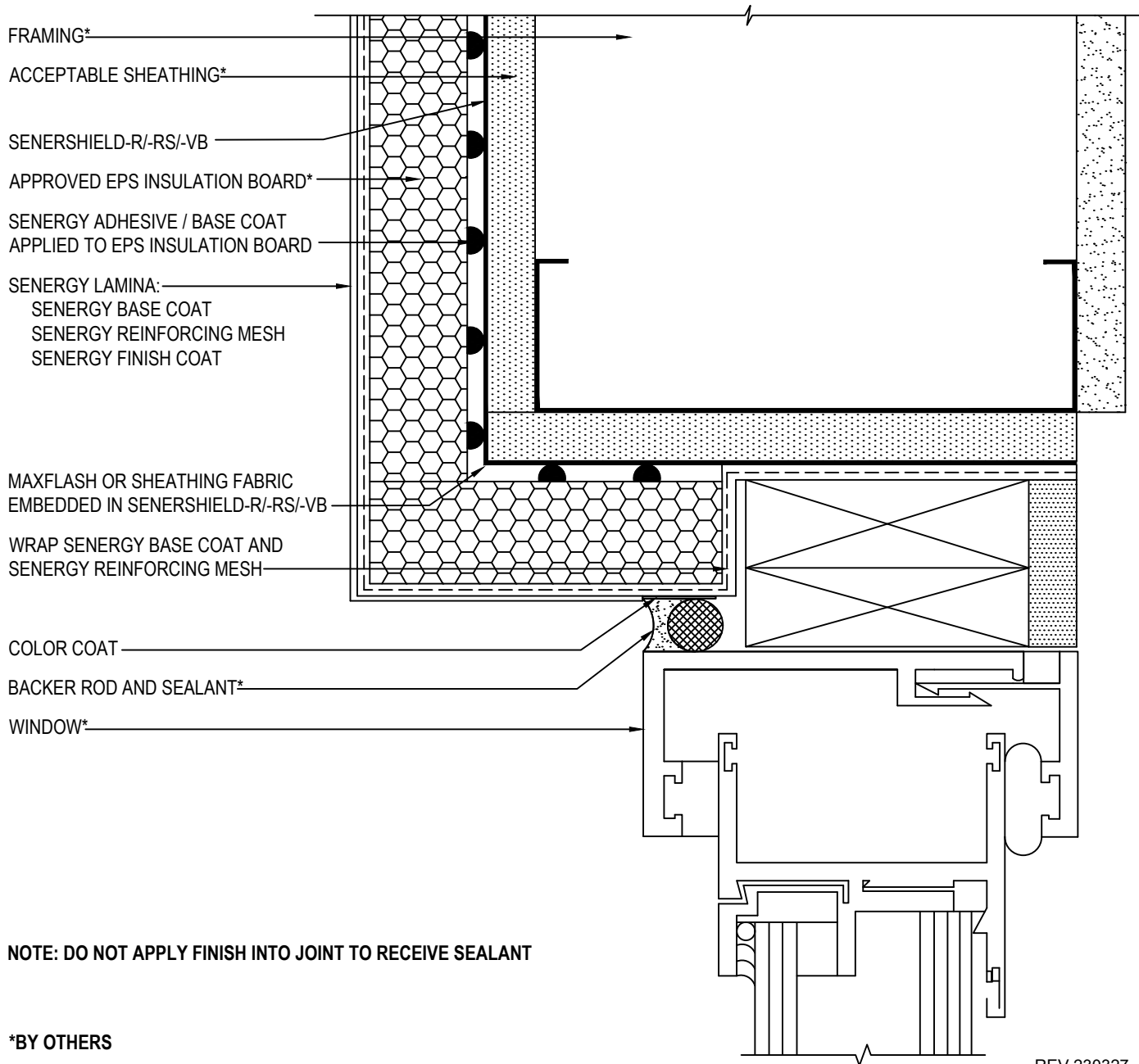
TYPICAL WINDOW SILL DETAIL (FLUSH) SENERPANEL CI-D DESIGN

SCALE: NTS

15

Structure, substrates, flashing, and other items which are not part of the Senergy *Senerpanel CI-D System* are the responsibility of others. This detail is subject to change without notice. Senergy accepts no liability for the end use of this detail. For conditions not shown, consult Senergy Technical Service for review of specific detail.

Senergy®



NOTE: DO NOT APPLY FINISH INTO JOINT TO RECEIVE SEALANT

*BY OTHERS

REV 230327

TYPICAL WINDOW JAMB (RECESSED)

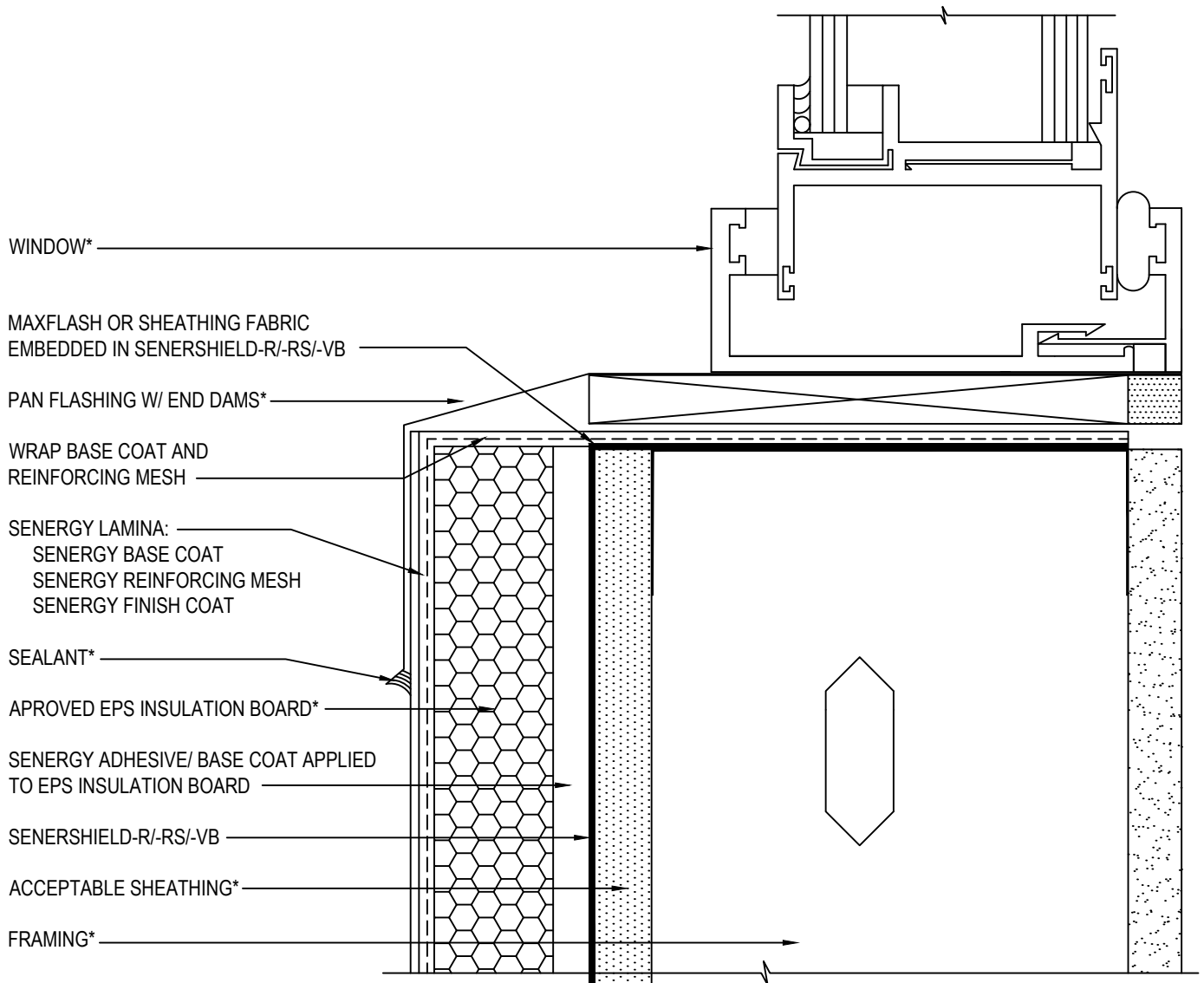
SENERPANEL CI-D DESIGN

SCALE: NTS

16

Structure, substrates, flashing, and other items which are not part of the Senergy SenerPanel CI-D System are the responsibility of others. This detail is subject to change without notice. Senergy accepts no liability for the end use of this detail. For conditions not shown, consult Senergy Technical Services for review of specific detail.

Senergy®



REV 230327

TYPICAL WINDOW SILL DETAIL (RECESSED)

SENERPANEL CI-D DESIGN

SCALE: NTS

17

Structure, substrates, flashing, and other items which are not part of the Senergy SenerPanel CI-D System are the responsibility of others. This detail is subject to change without notice. Senergy accepts no liability for the end use of this detail. For conditions not shown, consult Senergy Technical Services for review of specific detail.

Senergy®