

Sentry Stucco Plus With Maxgrip Veneer Mortar

A cement plaster stucco system featuring Senergy air-water/resistive barriers with Maxgrip Veneer Mortar.

Description

Sentry Stucco Plus with MaxGrip Veneer Mortar is a highly advanced Portland cement-based exterior wall system. It incorporates a Senershield-R, -RS, or -VB air-water/resistive barrier to provide a premium level of protection to the sheathing and cavity against moisture and air intrusion. The system features MaxGrip Veneer Mortar - a high-strength specially formulated setting bed mortar to adhere natural and manufactured stone, ceramic tile, and thin brick veneer

DESIGN CONSIDERATIONS

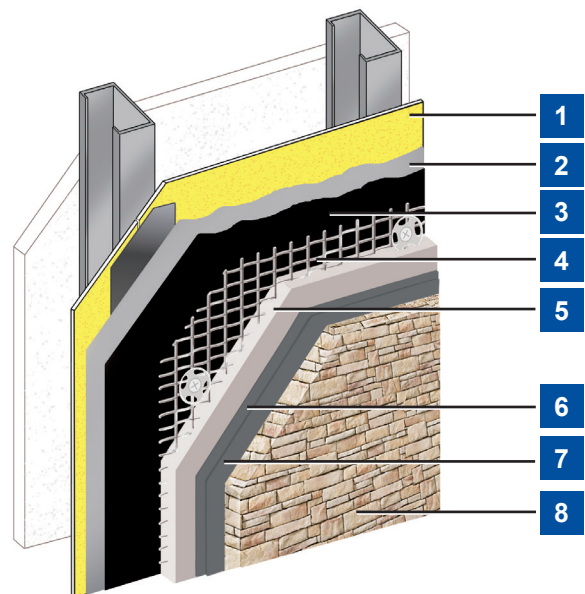
- Maximum allowable deflection L/360, based on stud/structural properties only.
- Acceptable sheathing: PermaBase® Cement Board and other cement-boards conforming with ASTM C1325 (Type A-exterior); poured concrete/ unit masonry; ASTM C1177 type sheathings, including, Weather Defense™ Platinum sheathing, GreenGlass® sheathing, eXP™ sheathing, GlasRoc® sheathing, Securock™ glass-mat sheathing, and DensGlass® exterior sheathing; DensElement (sheathing only) gypsum sheathing (ASTM C79/C1396); Exposure I or exterior plywood (Grade C/D or better); or Exposure I OSB and Huber Zip (sheathing only)
- Expansion joints are required in the system where they exist in the substrate, where the system adjoins dissimilar construction, at changes in substrates and at floor lines in multilevel wood frame construction and where movement is anticipated, as determined by the project design team.
- Reference system specification for testing information.

Uses

New or retrofit residential, institutional and commercial construction such as hotels, hospitals, retail centers, schools, multi-family apartments and condominiums, and government facilities.

Material Substitution

Material substitution will adversely affect system performance and will void all warranty coverage unless approved in writing by Master Builders Solutions Wall.



1. Acceptable Sheathing*
2. Senershield-R/-RS/-VB
3. Grade D Paper (Bond Breaker)*
4. PermaLath 1000 or Metal Plaster Base*
5. StuccoBase by Master Builders Solutions
6. Skim Coat of MaxGrip Veneer Mortar
7. MaxGrip Veneer Mortar
8. Adhered Veneer*

* By Others

Sentry Stucco Plus With Maxgrip Veneer Mortar

Sentry Stucco Plus with Maxgrip Veneer Mortar System and Component Performance:

Test	Method	Criteria	Results
Water penetration of exterior windows, curtain walls and doors by uniform static air pressure	ASTM E331	No water penetration on the face of the test specimen at 136.9 Pa (2.86 psf)	Pass
Freeze-thaw Resistance	Per ICC-ES acceptance criteria AC-11	No sign of deleterious effects after 10 cycles	StuccoBase passed with no visible evidence of deterioration when examined under 5x magnification
Water Vapor Transmission	ASTM E96-Wet Cup	Report value	StuccoBase 20.4 perms
Racking Load Test	ASTM E72	Report value	Maximum load resistance 5530 pounds (250 kg)
Compressive Strength	ASTM C109	Report value	22.4 MPa (3245 psi) average for StuccoBase
Flexural Strength	ASTM C348	Report value	4.57 MPa (663 psi) average for StuccoBase
Surface Burning	ASTM E84	Report value	<25 Flame Spread <450 Smoke Developed Includes PermaLath 1000 and StuccoBase
Non-Combustibility	ASTM E136	No flaming, excess temperature rise or weight loss when exposed to 750 °C (1382 °F)	Pass StuccoBase with PermaLath 1000 or metal plaster base
Fire Resistance Rated Assemblies	ASTM E119	No transmission of heat greater than 250 °F above ambient; no passage of flame or hot gasses; no passage of water from hose stream test; for loadbearing walls – ability to with stand load under test conditions	Hour Rated Assemblies: <ul style="list-style-type: none"> ● Load bearing wood stud wall with 10.9 mm (7/16") OSB and 9.5 mm (3/8") StuccoBase ● Load bearing wood stud wall with 16mm (5/8") Type X gypsum sheathing and 9.5 mm (3/8") StuccoBase ● Load bearing wood stud wall with 10.9 mm (7/16") OSB, PermaLath 1000 & 12.7 mm (1/2") StuccoBase (from inside only) ● Non-load bearing steel framed wall with 16 mm (5/8") Type X gypsum sheathing, PermaLath 1000 & 12.7 mm (1/2") StuccoBase
Transverse (Wind) Load	ASTM E330	Report value	+/- 40 PSF; 2" X 4" wood studs, gypsum or wood sheathing or 3 5/8", 20 ga steel studs, gypsum or wood sheathing

Sentry Stucco Plus With Maxgrip Veneer Mortar

MaxGrip Veneer Mortar Testing			
Test	Method	Criteria	Results
Compressive Strength	ASTM C109	N/A	4000 psi
Freeze Thaw	ASTM C666	Procedure A, cycles rapid freezing and thawing in water, 40° F - 0° F - 40° F in not less than 2 hours and not more than 5 hours; modified using full IVS composite in place of concrete beam	> 100 cycles, no failure of MaxGrip
Shear Strength	ANSI A1 18.4	28 days ≥ 200 psi After 7 day water immersion ≥ 150 psi	565 psi at 28 days 306 psi after 7 day water immersion
Shear Strength	ANSI A1 18.15	7 days ≥ 300 psi 28 days ≥ 400 psi After 7 days water immersion ≥ 200 psi	487 psi at 7 days 565 psi at 28 days 306 psi after 7 day water immersion
Shear Bond	ASTM C482	Minimum 50 psi	130 psi - Directly to molded cement mortar bed specified in ASTM C482 146 psi average to Master Builders Solutions Wall System standard and dry base coats molded cement mortar bed specified in ASTM C482

Sentry Stucco Plus With Maxgrip Veneer Mortar

For Best Performance

- Use only for above grade vertical walls.
- Additives are not permitted for any Master Builders Solutions product unless approved in writing by Master Builders Solutions.
- All products must be installed at minimum 40 °F (4 °C) ambient and substrate temperatures unless otherwise noted on specific Master Builders Solutions Product Bulletins
- Protect all work from precipitation for at least 24-hours after application or until dry.
- All products must be stored in accordance with specific instructions on relevant Master Builders Solutions Product Bulletins.
- All substrates must be clean, dry and sound without planar irregularities greater than 1/4-inch per 10-feet (6 mm per 3 m)
- Per code veneer unit shall not exceed 2 5/8" (66.7 mm) in specified thickness, 36" (914 mm) in longest dimension not more than 5 ft² (0.46 m²) in total face area and shall not weigh more than 15 lbs/ft² (718 Pa)

Warranty Statement

Master Builders Solutions warrants this product to be free from manufacturing defects and to meet the technical properties on the current Product Bulletin, if used as directed within shelf life. Satisfactory results depend not only on quality products but also upon many factors beyond our control. MASTER BUILDERS SOLUTIONS MAKES NO OTHER WARRANTY OR GUARANTEE, EXPRESS OR IMPLIED, INCLUDING WARRANTIES OF MERCHANTABILITY OR FITNESS FOR A PARTICULAR PURPOSE WITH RESPECT TO ITS PRODUCTS. The sole and exclusive remedy of Purchaser for any claim concerning this product, including but not limited to, claims alleging breach of warranty, negligence, strict liability or otherwise, is shipment to purchaser of product equal to the amount of product that fails to meet this warranty or refund of the original purchase price of product that fails to meet this warranty, at the sole option of Master Builders Solutions. In the absence of an extended warranty issued by Master Builders Solutions, any claims concerning this product must be received in writing within one (1) year from the date of shipment and any claims not presented within that period are waived by Purchaser. MASTER BUILDERS SOLUTIONS WILL NOT BE RESPONSIBLE FOR ANY SPECIAL, INCIDENTAL, CONSEQUENTIAL (INCLUDING LOST PROFITS) OR PUNITIVE DAMAGES OF ANY KIND.

Purchaser must determine the suitability of the products for the intended use and assumes all risks and liabilities in connection therewith. This information and all further technical advice are based on Master Builders Solutions present knowledge and experience. However, Master Builders Solutions assumes no liability for providing such information and advice including the extent to which such information and advice may relate to existing third party intellectual property rights, especially patent rights, nor shall any legal relationship be created by or arise from the provision of such information and advice. Master Builders Solutions reserves the right to make any changes according to technological progress or further developments. The Purchaser of the Product(s) must test the product(s) for suitability for the intended application and purpose before proceeding with a full application of the product(s). Performance of the product described herein should be verified by testing and carried out by qualified experts.