

Sentry Stucco Wall System with MasterSeal 581

Direct applied fiber-reinforced hard-coat stucco system featuring MasterSeal® 581.

System Description

Sentry Stucco is a direct applied cement plaster stucco system for concrete and CMU featuring MasterSeal 581 waterproof cement-based coating with cement plaster component applied to a thickness of up to 5/8".

Uses

New or retrofit residential, institutional and commercial construction such as hotels, hospitals, retail centers, schools, multi-family apartments, condominiums, and government facilities.

Design Considerations

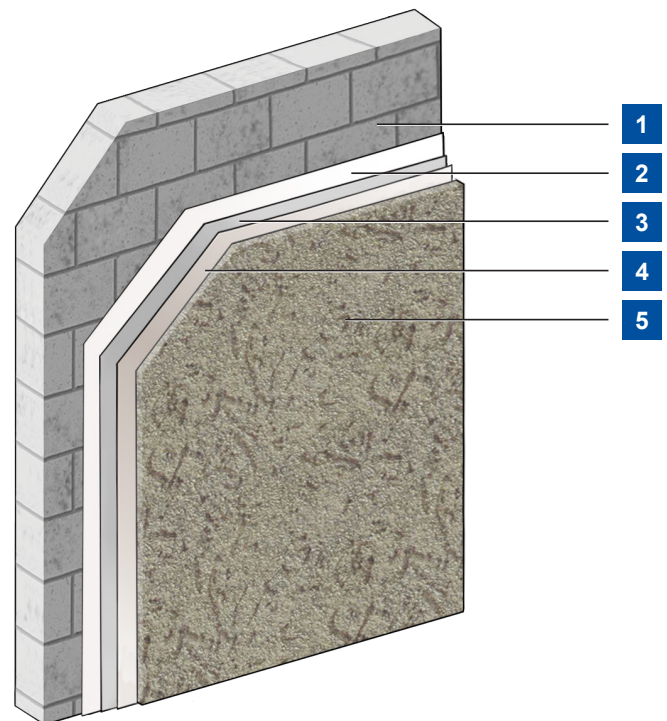
- Resistant to impact and punctures; good for high traffic areas.
- Susceptibility to efflorescence can be reduced by using StuccoPrime.
- Additional safeguards against incidental moisture intrusion.
- Direct applied removing the need for lath and mechanical fasteners.
- Elastomeric finish coat bridges hairline cracks.
- EPS shapes integrate into the system for economical architectural detailing.
- Fade, abrasion and dirt-resistant finishes in a wide selection of textures, standard colors and unlimited custom colors.
- Allow MasterSeal 581 to cure for 24-48 hours; apply StuccoBase over cured MasterSeal 581 within 7-10 days.

Material Substitution

Material substitution will adversely affect system performance and will void all warranty coverage unless approved in writing by Master Builders Solutions Wall System.

Enhanced Crack Resistance Options

- Good : Maxlastic Elastomeric Finish
Better : SRT Mesh with Senergy base coat or Stucco Level Coat
Best : SRT Mesh with Senergy base coat or Stucco Level Coat and Maxlastic Elastomeric Finish



1. Acceptable Substrates:*
2. MasterSeal 581
3. StuccoBase
4. StuccoPrime (Optional)
5. Senergy Finish Coat

*By Others

Sentry Stucco Wall System with MasterSeal 581

System and Component Performance			
Test	Method	Criteria	Results
Freeze-thaw Resistance	Per ICC-ES acceptance criteria AC-11	No sign of deleterious effects after 10 cycles.	StuccoBase passed with no visible evidence of deterioration when examined under 5x magnification.
Water Vapor Transmission	ASTM E96-Wet Cup	Report Value	StuccoBase 20.4 perms, MasterSeal 581 12 perms
Compressive Strength	ASTM C109	Report Value	3245 psi (22.4 MPa) average for StuccoBase
Flexural Strength	ASTM C348	Report Value	663 psi (4.57 MPa) average for StuccoBase
Surface Burning	ASTM E84	Report Value	<25 Flame Spread <450 Smoke Developed Includes Permalath 1000, MasterSeal 581, StuccoBase, and Senergy Finishes
Non-Combustibility	ASTM E136	No flaming, excess temperature rise or weight loss when exposed to 1382 °F (750 °C).	Pass StuccoBase
Fire Resistance Rated Assemblies	ASTM E119	No transmission of heat greater than 250 °F above ambient; no passage of flame or hot gasses; no passage of water from hose stream test; for load bearing walls – ability to withstand load under test conditions.	Does not affect rating of concrete or masonry wall
Tensile bond	ASTM D4541	Report Value	Min 150 psi, StuccoBase to MasterSeal 581

Limitations

- Use only for above grade vertical walls. Not for use below grade or on surfaces subject to continuous or intermittent immersion in water or hydrostatic pressure. System must terminate a minimum of 4" above raw earth and 2" above paved surfaces. Use only for above grade vertical walls. Not for use below grade or on surfaces subject to continuous or intermittent immersion in water or hydrostatic pressure.
- Additives are not permitted for any Master Builders Solutions product unless approved in writing by Master Builders Solutions Wall Systems.
- All products must be installed at minimum 40 °F (4 °C) ambient and substrate temperatures unless otherwise noted on specific Master Builders Solutions Product Bulletins. Do not apply in ambient temperature greater than 100 °F (38 °C) or to surface temperature above 120 °F (49 °C).
- Protect all work from precipitation for at least 24-hours after application. Ensure tops of walls are capped or otherwise properly protected.
- Ensure substrates are free of all form releasing agents or other residue and are clean, dry and sound without planar irregularities greater than 1/4-inch per 10-feet (6 mm per 3 m).