

Senerflex GDC with MaxGrip Veneer Mortar

An exterior cladding system with a continuous air/water-resistive barrier and insulation, featuring MaxGrip Veneer Mortar, a high-strength, specially-formulated setting bed mortar used to adhere natural and manufactured stone, tile, and thin brick veneer.

System Description

Senerflex GDC with MaxGrip Veneer Mortar is a continuously insulated drainage wall cladding system. It features a Senershield fluid-applied air/water-resistive barrier, moisture drainage, continuous exterior Geometrically Defined Cavity (GDDC) insulation board and MaxGrip Veneer Mortar used to adhere natural and manufactured stone, tile, and thin brick veneer.

Uses

Senerflex GDC with MaxGrip Veneer Mortar is used for exterior walls in new and retrofit commercial, institutional and residential construction. It is used when a water drainage or rainscreen Class PB EIFS is desired or required to satisfy code.

Material Substitution

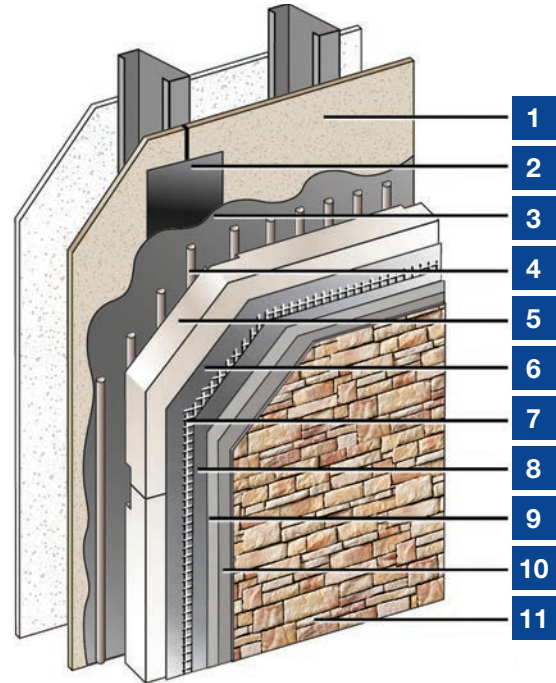
Material substitution will adversely affect system performance and will void all warranty coverage unless approved in writing by BASF Wall Systems.

Warranty

12-year Limited Labor, Material and Drainage Warranty. Coverage extends to framing and sheathing in addition to Senerflex GDC with MaxGrip Veneer Mortar System itself.

Limitations

- For use on above grade vertical walls. System must terminate a minimum of 200 mm (8-inches) above grade.
- Additives are not permitted for any BASF product unless approved in writing by BASF Wall Systems
- All products must be installed at minimum 4°C (40°F) ambient and substrate temperatures unless otherwise noted on specific BASF Product Bulletins.
- Protect all work from precipitation for at least 24-hours after application and until dry.
- All products must be stored in accordance with specific instructions on relevant BASF Product Bulletins.
- All substrates must be clean, dry and sound without planar irregularities greater than 6 mm per 3 m (1/4-inch per 10-feet).
- Veneer should not exceed 6.8 kg. per square meter (15 lbs. per square foot).



1. Acceptable substrates^{**}:
PermaBase[®] Cement Board and other cement boards conforming with ASTM C1325 (Type A - exterior); poured concrete/unit masonry; ASTM C1177 type sheathings, including Weather Defense[™] Platinum sheathing, GreenGlass[®] sheathing, eXP[™] sheathing, GlasRoc[®] sheathing, Securock[™] glass-mat sheathing, and DensGlass[®] exterior sheathing; DensElement (sheathing only), gypsum sheathing (ASTM C79/C1396); Exposure I or exterior plywood (Grade C/D or better); or Exposure I OSB; Huber Zip (sheathing only).
2. Approved Joint Reinforcement: BASF MaxFlash or Sheathing Fabric embedded in Senershield-R/-RS/-VB
3. Senershield-R/-RS/-VB
4. Senergy Adhesive
5. GDC Insulation Board
6. Senergy Base Coat
7. BASF Intermediate 12 Reinforcing Mesh
8. Senergy Base Coat
9. Skim Coat of BASF MaxGrip Veneer Mortar
10. BASF MaxGrip Veneer Mortar
11. Adhered Veneer^{**}

^{**}(By Other)

Senerflex GDC with MaxGrip Veneer Mortar

Warranty Statement

BASF warrants this product to be free from manufacturing defects and to meet the technical properties on the current Product Bulletin, if used as directed within shelf life. Satisfactory results depend not only on quality products but also upon many factors beyond our control. BASF MAKES NO OTHER WARRANTY OR GUARANTEE, EXPRESS OR IMPLIED, INCLUDING WARRANTIES OF MERCHANTABILITY OR FITNESS FOR A PARTICULAR PURPOSE WITH RESPECT TO ITS PRODUCTS. The sole and exclusive remedy of Purchaser for any claim concerning this product, including but not limited to, claims alleging breach of warranty, negligence, strict liability or otherwise, is shipment to purchaser of product equal to the amount of product that fails to meet this warranty or refund of the original purchase price of product that fails to meet this warranty, at the sole option of BASF. In the absence of an extended warranty issued by BASF, any claims concerning this product must be received in writing within one (1) year from the date of shipment and any claims not presented within that period are waived by Purchaser. BASF WILL NOT BE RESPONSIBLE FOR ANY SPECIAL, INCIDENTAL, CONSEQUENTIAL (INCLUDING LOST PROFITS) OR PUNITIVE DAMAGES OF ANY KIND. Purchaser must determine the suitability of the products for the intended use and assumes all risks and liabilities in connection therewith. This information and all further technical advice are based on BASF's present knowledge and experience. However, BASF assumes no liability for providing such information and advice including the extent to which such information and advice may relate to existing third party intellectual property rights, especially patent rights, nor shall any legal relationship be created by or arise from the provision of such information and advice. BASF reserves the right to make any changes according to technological progress or further developments. The Purchaser of the Product(s) must test the product(s) for suitability for the intended application and purpose before proceeding with a full application of the product(s). Performance of the product described herein should be verified by testing and carried out by qualified experts.