

## CBS 1000 CI with MaxGrip Veneer Adhesive

Highly impact resistant, water-drainage wall system incorporating PermaBASE CI™ polyiso insulated cement board, reinforced base coat and MaxGrip Veneer Adhesive, specially formulated high-strength setting bed mortar used to adhere natural and manufactured stone, tile, and thin brick veneer.

### SYSTEM DESCRIPTION

Senergy CBS 1000 CI with MaxGrip Veneer Adhesive is a high-impact, water-drainage wall cladding system that incorporates a Senergy air/water-resistive barrier, drainage mat and features PermaBASE CI™ Insulated Cement Board by PermaBASE® Building Products, LLC with a polymer-modified base coat, fiberglass reinforcing mesh, and MaxGrip Veneer Adhesive used to adhere natural and manufactured stone, tile, and thin brick veneer. CBS 1000 CI with MaxGrip Veneer Adhesive system provides ease of design to ensure energy code compliance, high impact and increased dimensional stability without sacrificing design freedom.

### DESIGN CONSIDERATIONS

Maximum substrate design deflection is L/360. Substrate must be level within 1/4" in 10' (6 mm in 3 m)

Expansion joints are required in the system where they exist in the substrate, where the system adjoins dissimilar construction, at changes in substrates, at floor lines in multilevel wood frame construction, and where movement is anticipated

Reference system specification for testing information.

### USES

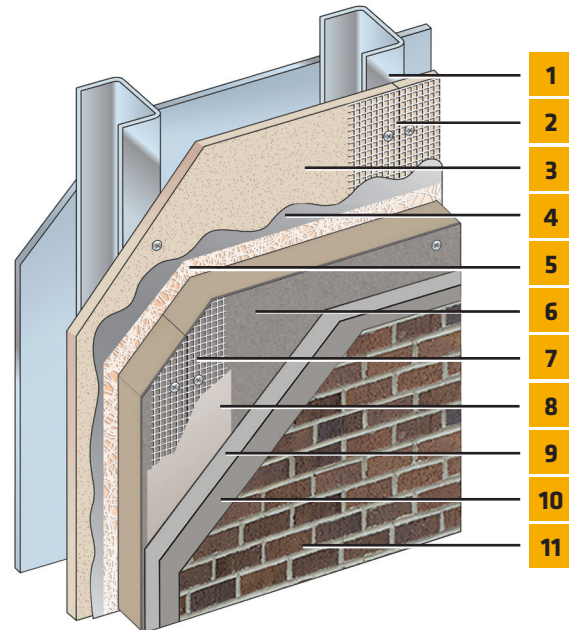
Exterior walls in new or retrofit commercial, institutional and residential construction such as hotels, hospitals, retail, schools, multi-family apartments and condominiums, and government facilities.

### MATERIAL SUBSTITUTION

Material substitution will adversely affect system performance and will void all warranty coverage unless approved in writing by Sika Facades.

### LIMITATIONS

- For use on above grade vertical walls. System must terminate a minimum of 6" (152 mm) above unfinished grade.
- Additives are not permitted for products unless approved in writing by Sika Facades Tech Service Team.
- All products must be installed at minimum 40 °F (4 °C) ambient and substrate temperatures unless otherwise noted on specific Product Data Sheets.
- Protect all work from precipitation for at least 24-hours after application.
- All products must be stored in accordance with specific instructions on relevant Product Data Sheets.
- All substrates must be clean, dry and sound without planar irregularities greater than 1/4" per 10' (6 mm per 3 m).



1. Framing\*
2. Approved Joint Reinforcement: SikaWall MaxFlash or Sheathing Fabric embedded in Senersshield-R, -RS or -VB
3. Acceptable Sheathing\*:  
PermaBase® Cement Board and other cement boards conforming with ASTM C1325 (Type A - exterior); poured concrete/unit masonry; ASTM C1177 type sheathings, including Weather Defense™ Platinum sheathing, GreenGlass® sheathing, eXPTM sheathing, GlasRot® sheathing, Securock™ glass-mat sheathing, and DensGlass® exterior sheathing; DensElement (sheathing only), gypsum sheathing (ASTM C79/C1396); Exposure I or exterior plywood (Grade C/D or better); or Exposure I OSB; Huber Zip (sheathing only).
4. Senersshield-R/-RS/-VB
5. SikaWall Drainage Mat
6. PermaBASE CI™ Insulated Cement Board\*
7. SikaWall Self Adhering Mesh Tape
8. Senergy Base Coat
9. Skim coat of MaxGrip Veneer Adhesive
10. MaxGrip Veneer Adhesive
11. Adhered Veneer\*  
(\*By Others)

## CBS 1000 CI with MaxGrip Veneer Adhesive

### TEST RESULTS:

TEST	METHOD	CRITERIA	RESULTS
Transverse Wind-load	ASTM E330	Steel stud framing (20 gauge, 3 5/8") @ 16"o.c.,	Maximum allowable transverse load: +/- 36 psf (+/- 1723 Pa)
Transverse Wind-load	ASTM E330	Wood assembly (2" x 4") @ 16"o.c.	Maximum allowable transverse load: +/- 40.8 psf (+/- 1953 Pa)
Radiant Heat Exposure	NFPA 268	No ignition at 20 minutes	Met test criteria.
Intermediate Scale Multi-story Fire Test	NFPA 285 / UBC Standard 26-9	1. Resist flame propagation over the exterior surface 2. Resist vertical spread of flame within combustible core/component of panel from one story to the next 3. Resist vertical spread of flame over the interior surface from one story to the next 4. Resist lateral spread of flame from the compartment of fire origin to adjacent spaces	Met test criteria
Surface Burning	ASTM E84 / UL 723	Flame spread < 25 Smoke developed < 450	All components of the system meet Class A performance (FS < 25; SD < 450)

### PermaBASE CI Physical Properties per PermaBASE Building Products, LLC:

TEST	METHOD	1 INCH	2 INCH	3 INCH
Dimensional Stability	ASTM D2126	<0.5%	<0.5%	<0.5%
Water Absorption	ASTM D209	<5.0%	<5.0%	<5.0%
Water Vapor Transmission	ASTM E96	<1.5 perms	<1.5 perms	<1.5 perms
Flame Spread	ASTM E84	<25	<25	<25
Smoke Development	ASTM E84	<450	<450	<450
R-Value	ASTM C518	4	10	16
Dimensions	ASTM C473	1" x 4' x 8'	2" x 4' x 8'	3" x 4' x 8'
Weight		2.2 lbs. / sq. ft	2.4 lbs. / sq. ft	2.6 lbs. / sq. ft

### WARRANTY

Prior to each use of any product of Sika Corporation, its subsidiaries or affiliates ("SIKA"), the user must always read and follow the warnings and instructions on the product's most current product label, Product Data Sheet and Safety Data Sheet which are available at [usa.sika.com/senergy](http://usa.sika.com/senergy) or by calling SIKAFacades' Technical Service Department at 1-800-589-1336. Nothing contained in any SIKALiterature or materials relieves the user of the obligation to read and follow the warnings and instructions for each SIKAPRODUCT as set forth in the current product label, Product Data Sheet and Safety Data Sheet prior to use of the SIKAPRODUCT.

SIKA warrants this product for one year from date of installation to be free from manufacturing defects and to meet the technical properties on the current Product Data Sheet if used as directed within the product's shelf life. User determines suitability of product for intended use and assumes all risks. User's and/or buyer's sole remedy shall be limited to the purchase price or replacement of this product exclusive of any labor costs. NO OTHER WARRANTIES EXPRESS OR IMPLIED SHALL APPLY INCLUDING ANY WARRANTY OF MERCHANTABILITY OR FITNESS FOR A PARTICULAR PURPOSE. SIKASHALL NOT BE LIABLE UNDER ANY LEGAL THEORY FOR SPECIAL OR CONSEQUENTIAL DAMAGES. SIKASHALL NOT BE RESPONSIBLE FOR THE USE OF THIS PRODUCT IN A MANNER TO INFRINGE ON ANY PATENT OR ANY OTHER INTELLECTUAL PROPERTY RIGHTS HELD BY OTHERS. Sale of SIKAPRODUCTS are subject to the Terms and Conditions of Sale which are available at [usa.sika.com](http://usa.sika.com).

#### Sika Corporation

201 Polito Avenue  
Lyndhurst, NJ 07071 USA  
Customer Service +1 (800) 433-9517  
Technical Service +1 (800) 589-1336  
[usa.sika.com/senergy](http://usa.sika.com/senergy)

Rev March 2024

