



Senturion™ II Wall System

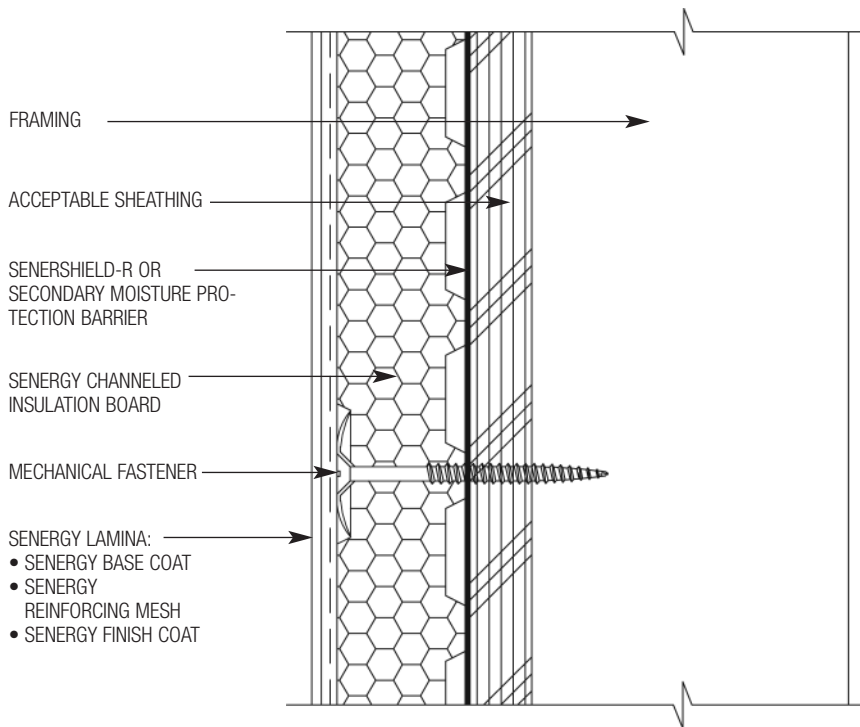


TYPICAL DETAILS **1017664**

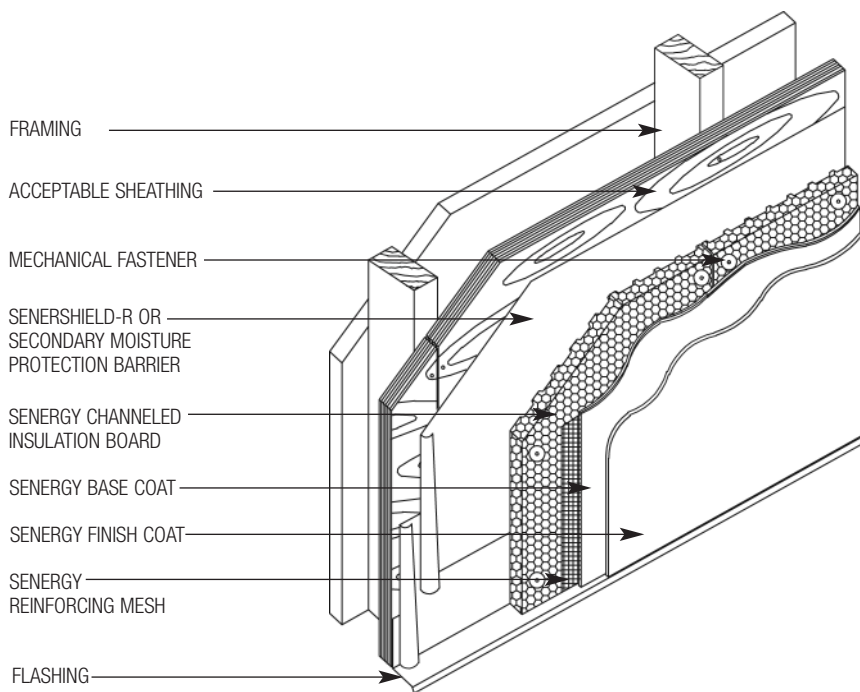
1. Senturion II Wall System Application (Plan View)
2. Senturion II Wall System Application (Isometric View)
3. Aesthetic Groove (Plan View)
4. Insulation Boards /Reinforcing Mesh Application at Openings
5. Clad Window Jamb With Aesthetic Band
6. Clad Window Head With Aesthetic Band
7. Clad Window Sill With Aesthetic Band
8. Clad Window Jamb
9. Clad Window Head
10. Clad Window Sill
11. Primed Window Jamb
12. Primed Window Head
13. Primed Window Sill
14. Expansion Joint Detail at Floorline of Wood Frame Construction
15. Expansion Joint at Change in Substrate (Plan View)
16. Termination at Soffit/Gable End
17. Downspout Application (Plan View)
18. Pipe Penetration
19. Light Fixture
20. Dryer Vent
21. Termination at Top of Deck
22. Termination at Bottom of Deck
23. Termination at Foundation
24. Termination at Foundation
25. Termination at Brick or Stone
26. Termination at Brick or Stone
27. Kick-out Flashing Detail
28. Senturion II Channeled Insulation Board Profile



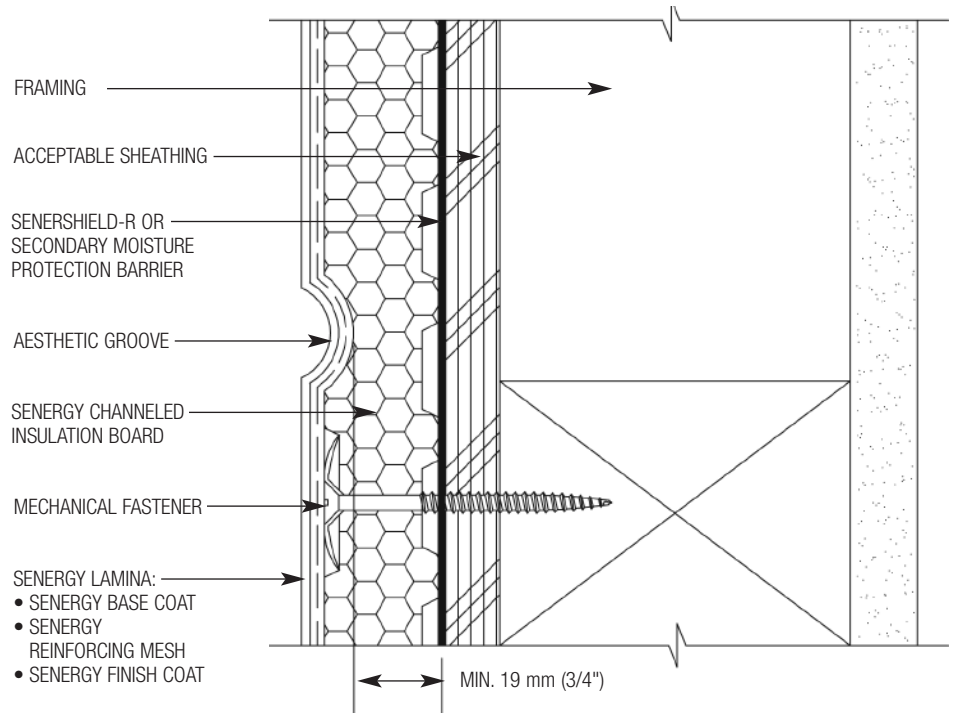
The Chemical Company



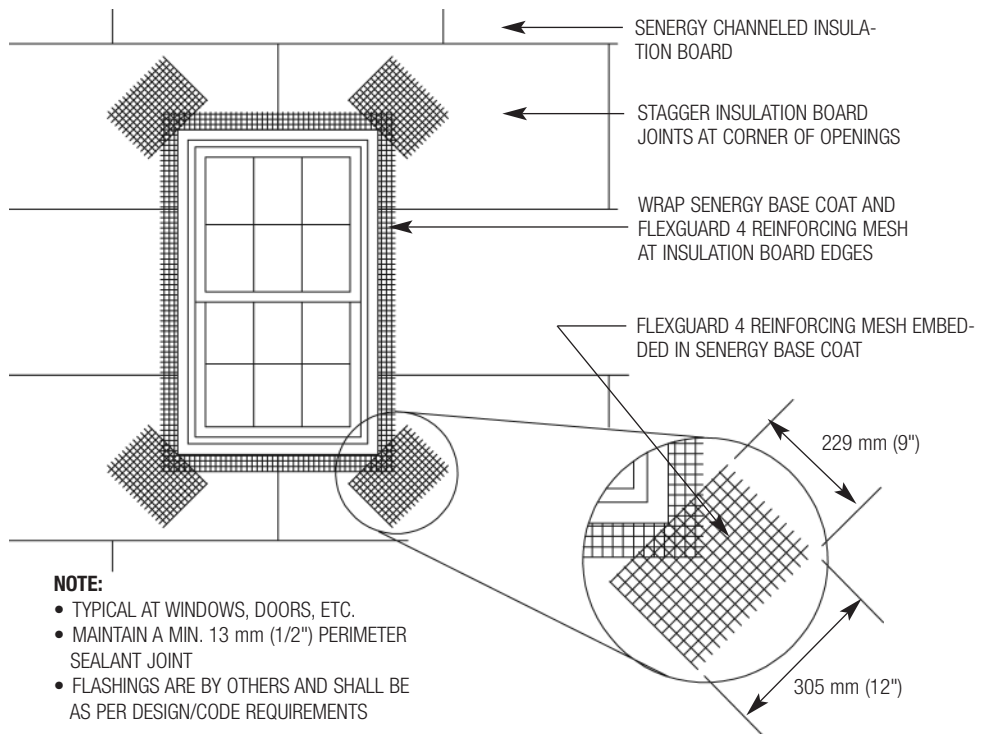
SII-01 TYPICAL SENTURION II WALL SYSTEM APPLICATION (PLAN VIEW)



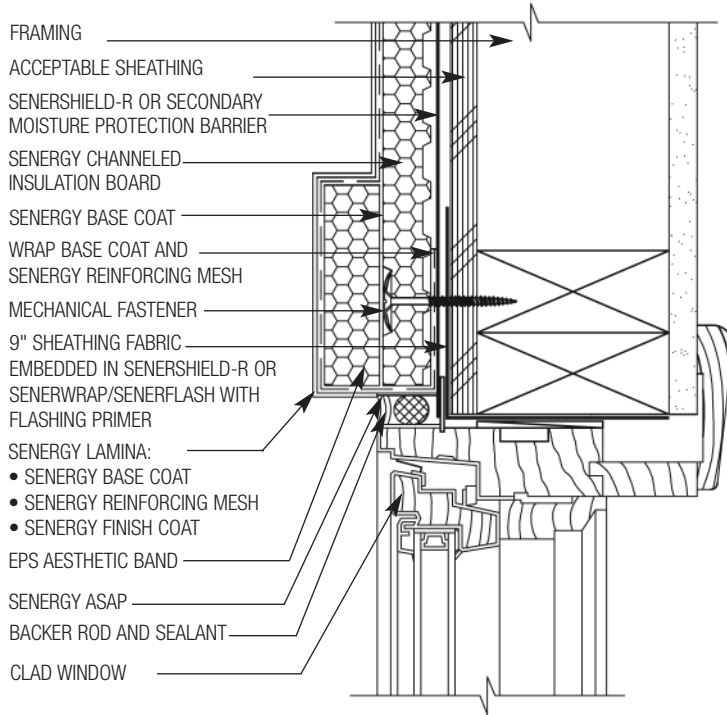
SII-02 TYPICAL SENTURION II WALL SYSTEM APPLICATION (ISOMETRIC VIEW)



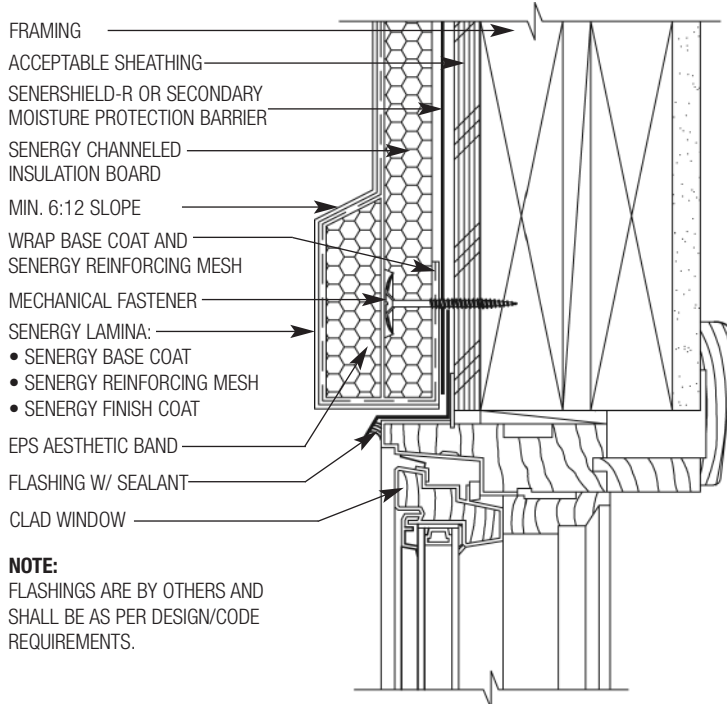
SII-03 TYPICAL AESTHETIC GROOVE (PLAN VIEW)



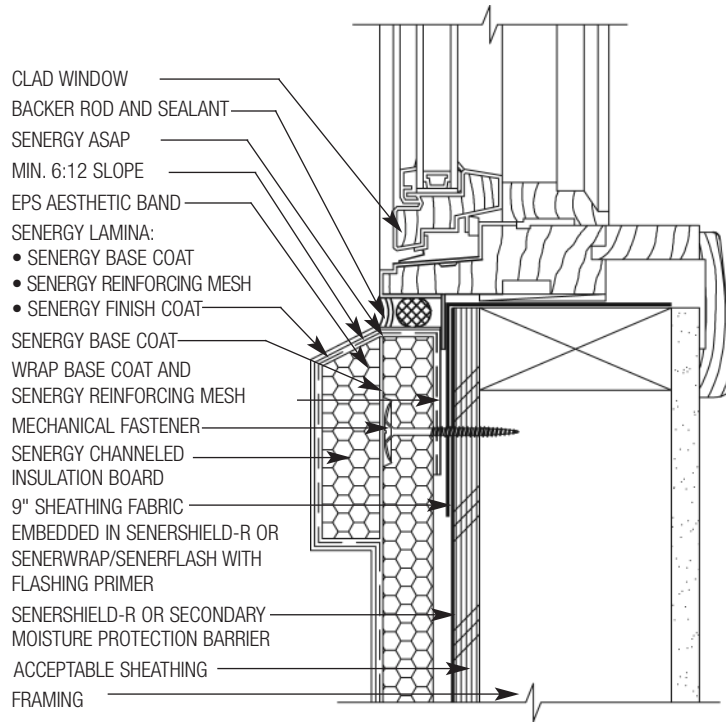
SII-04 TYPICAL INSULATION BOARDS/REINFORCING MESH APPLICATION AT OPENINGS



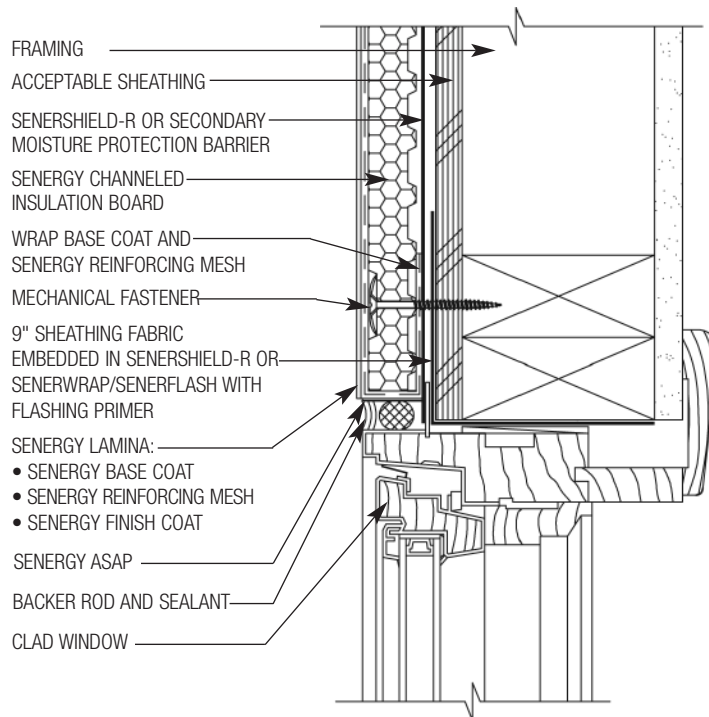
SII-05 TYPICAL CLAD WINDOW JAMB WITH AESTHETIC BAND



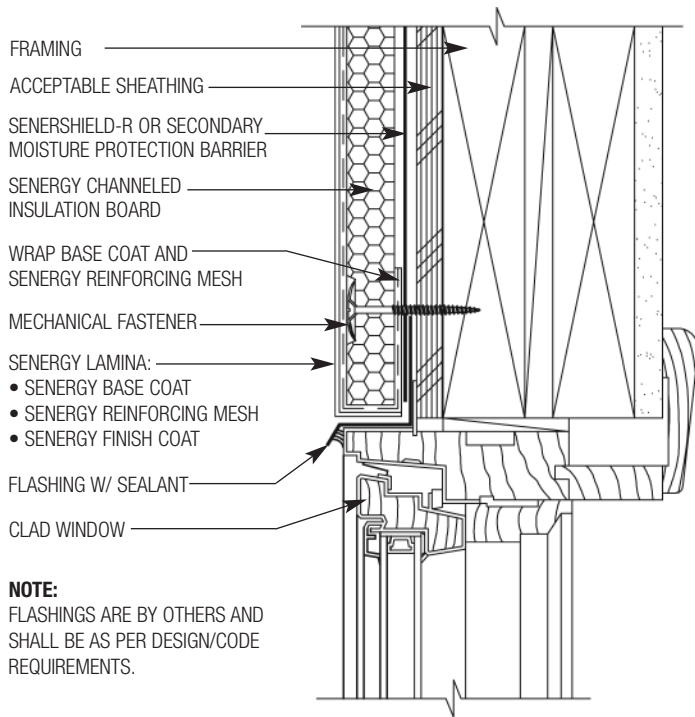
SII-06 TYPICAL CLAD WINDOW HEAD WITH AESTHETIC BAND



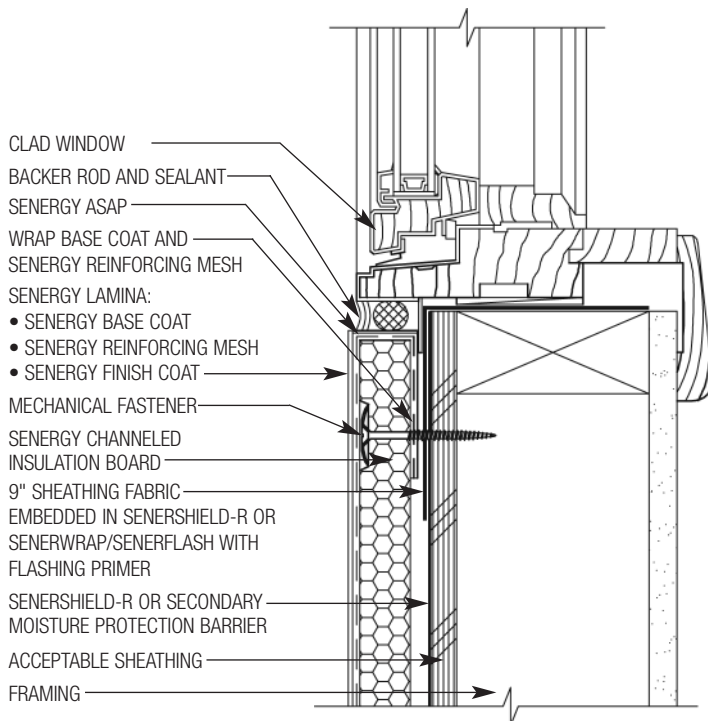
SII-07 TYPICAL CLAD WINDOW SILL WITH AESTHETIC BAND



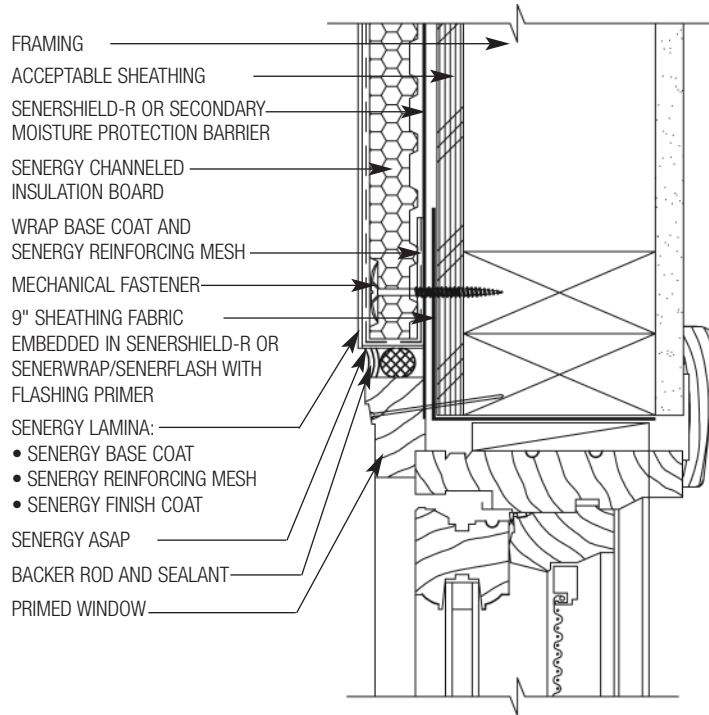
SII-08 TYPICAL CLAD WINDOW JAMB



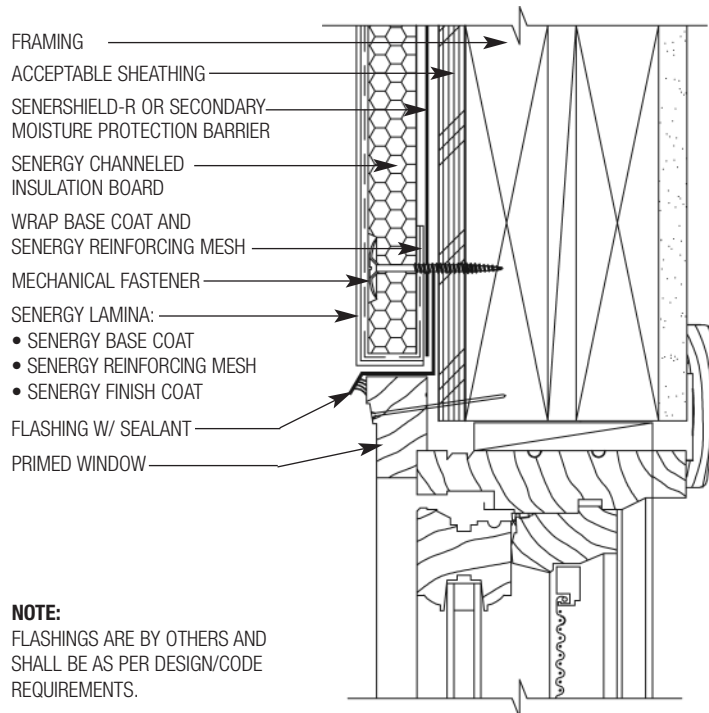
SII-09 TYPICAL CLAD WINDOW HEAD



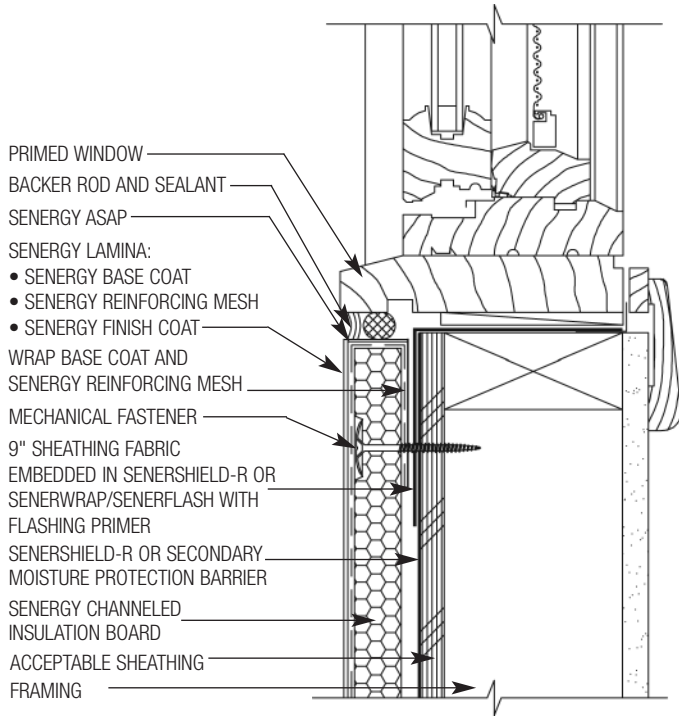
SII-10 TYPICAL WINDOW SILL



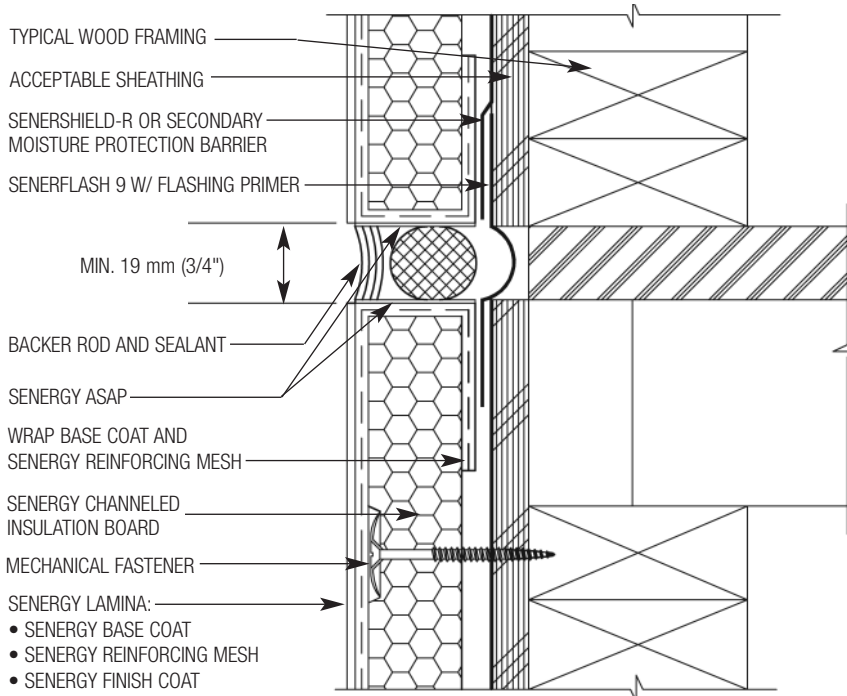
SII-11 TYPICAL PRIMED WINDOW JAMB



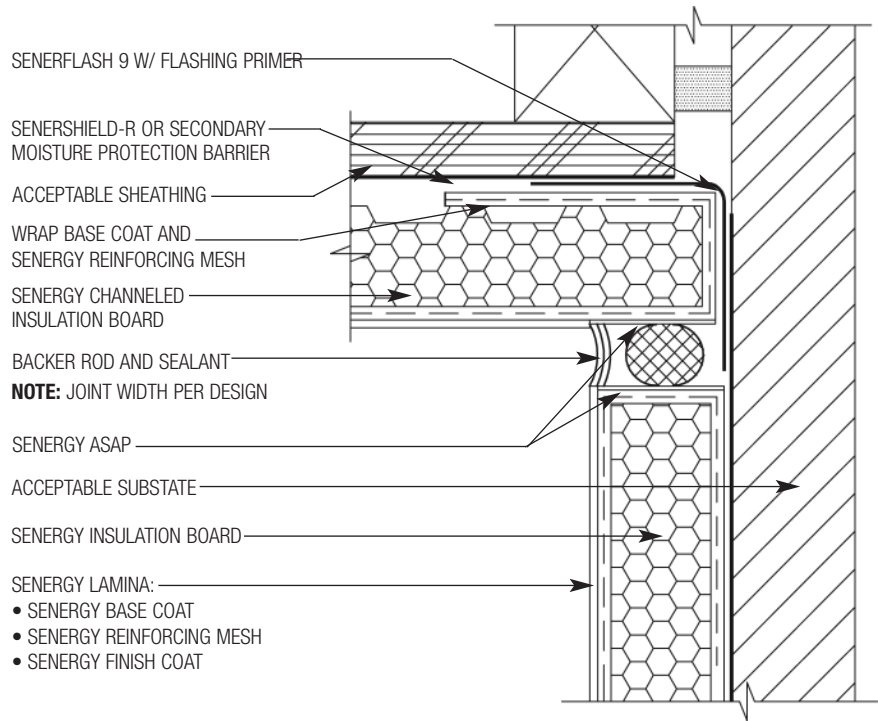
SII-12 TYPICAL PRIMED WINDOW HEAD



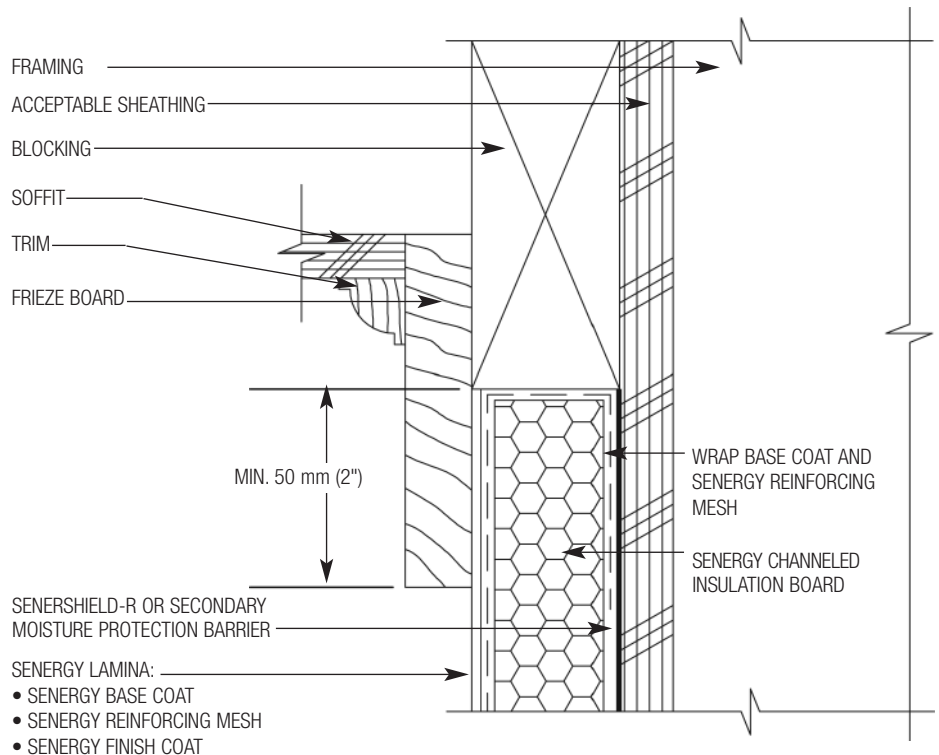
SII-13 TYPICAL PRIMED WINDOW SILL



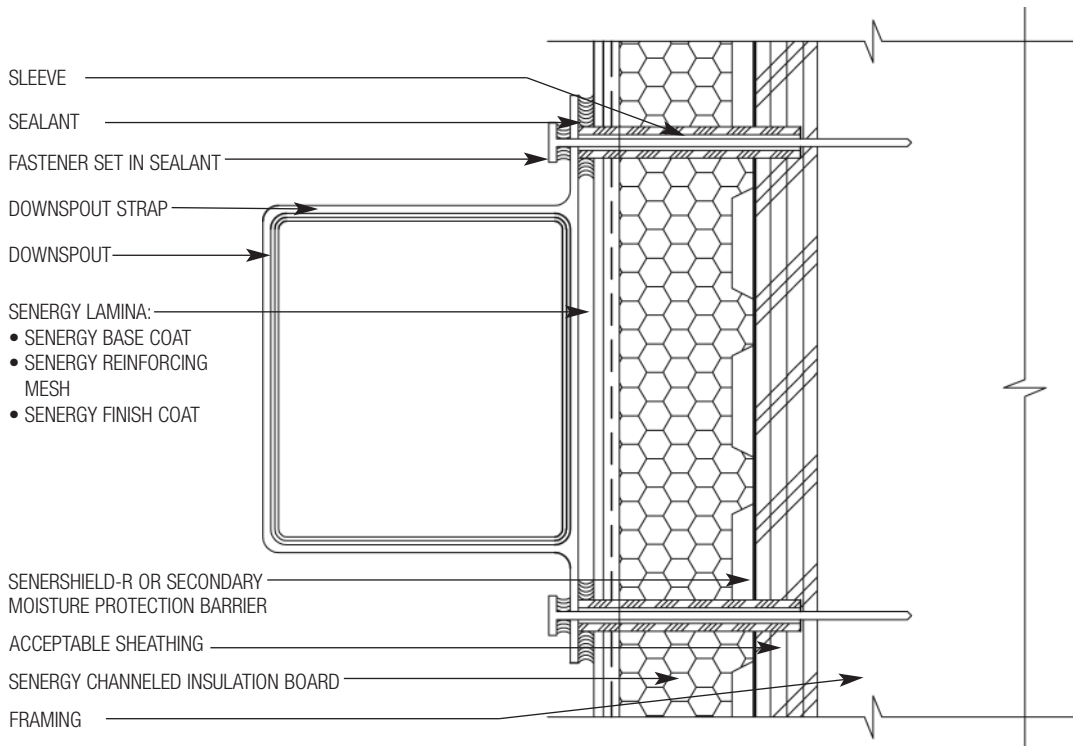
SII-14 TYPICAL EXPANSION JOINT DETAIL AT FLOORLINE OF WOOD FRAME CONSTRUCTION



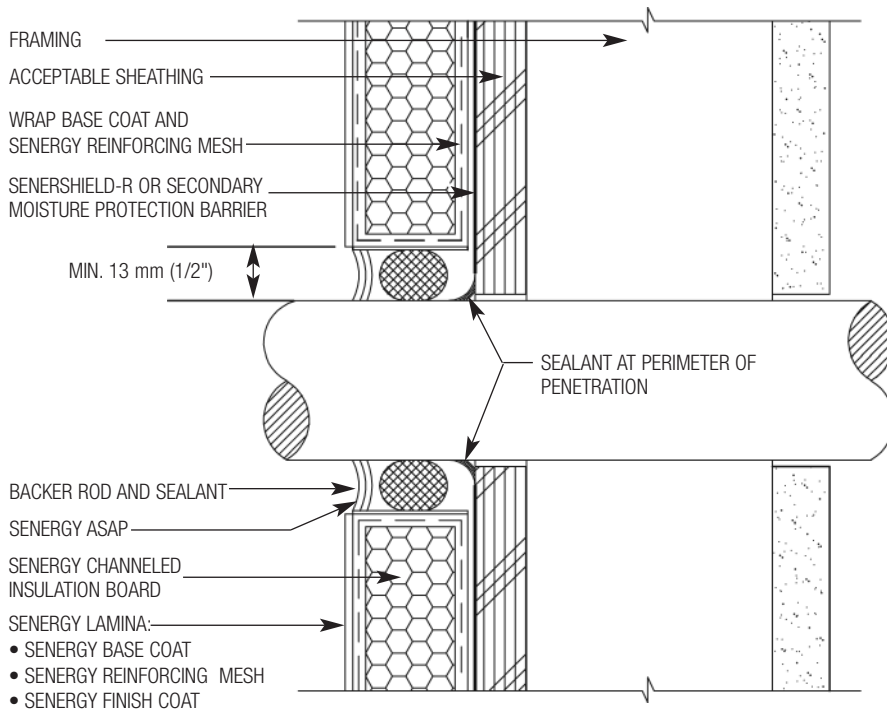
SII-15 TYPICAL EXPANSION JOINT AT CHANGE IN SUBSTRATE (PLAN VIEW)



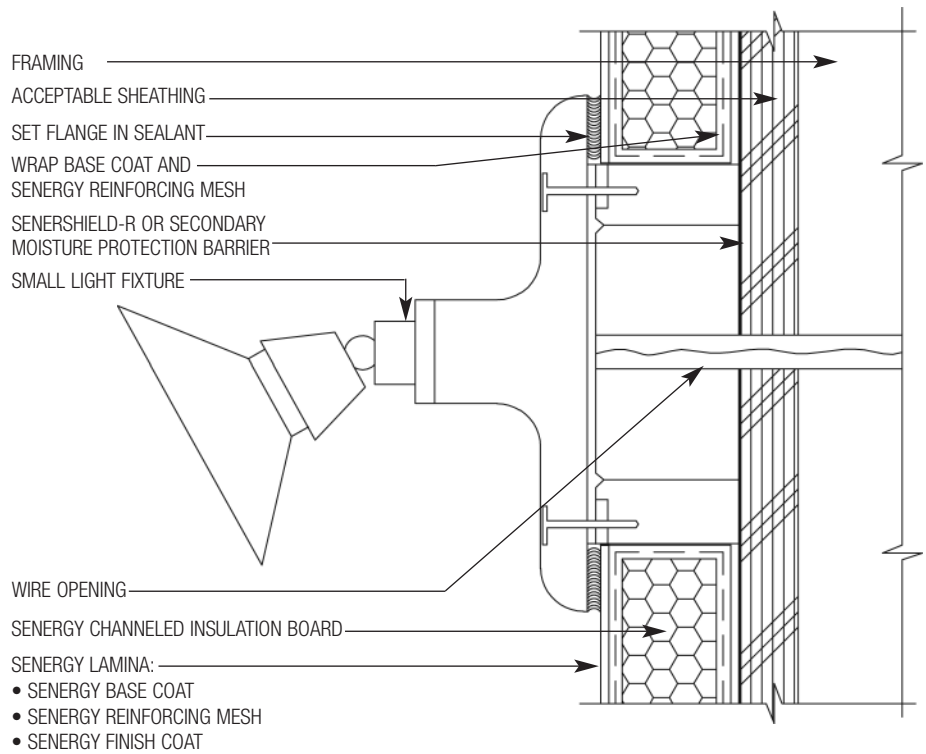
SII-16 TYPICAL TERMINATION AT SOFFIT/GABLE END



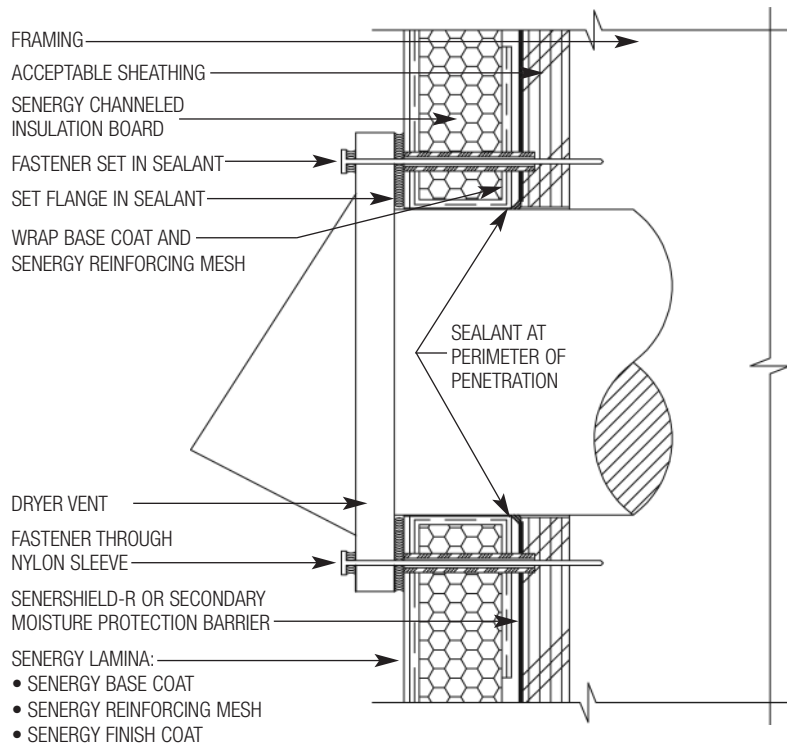
SII-17 TYPICAL DOWNSPOUT APPLICATION (PLAN VIEW)



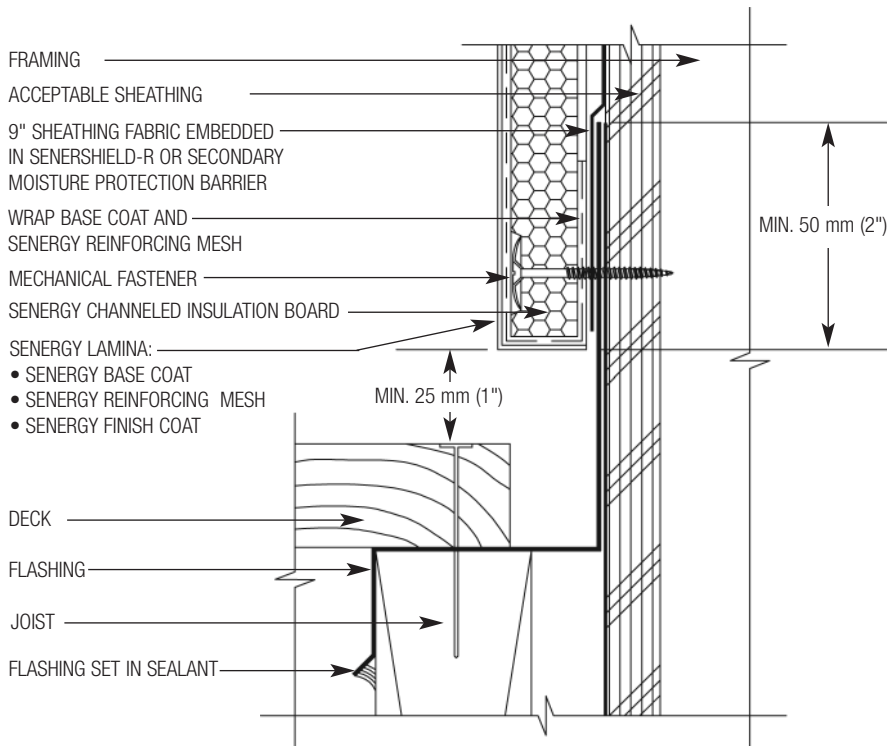
SII-18 TYPICAL PIPE PENETRATION



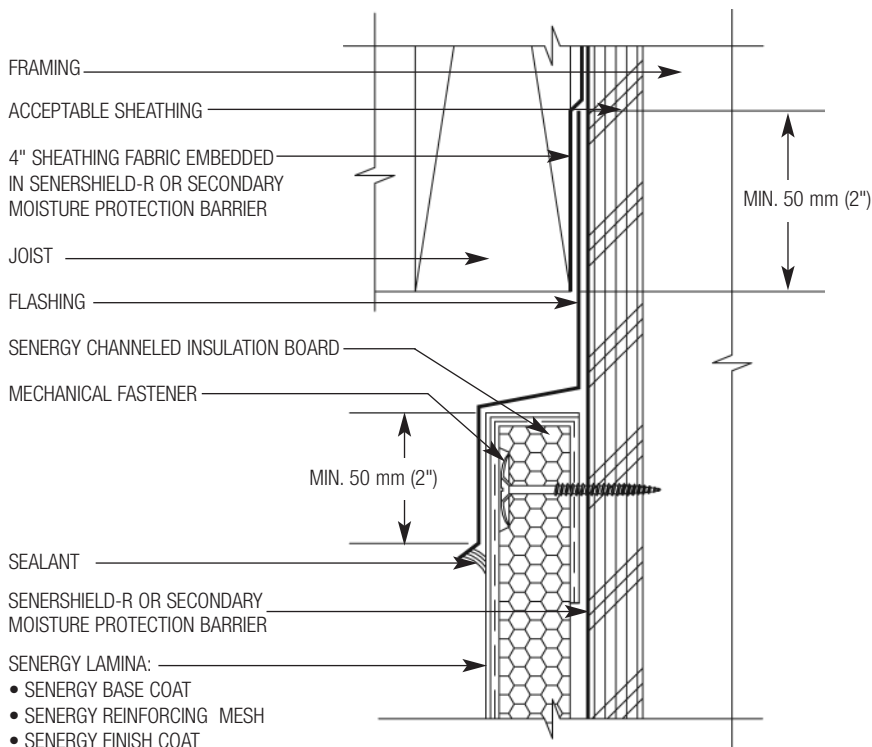
SII-19 TYPICAL LIGHT FIXTURE



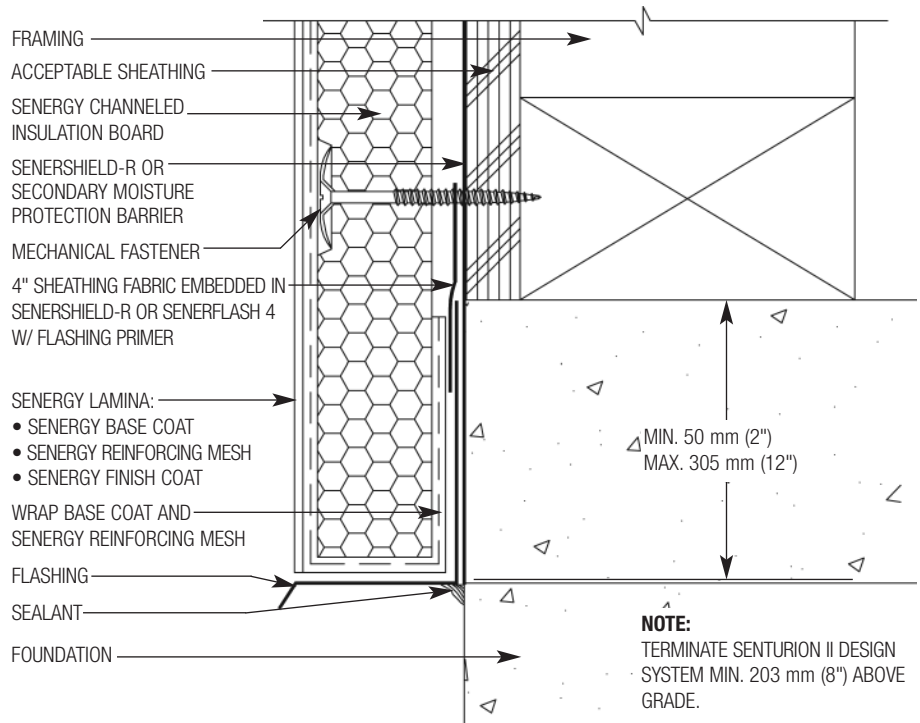
SII-20 TYPICAL DRYER VENT



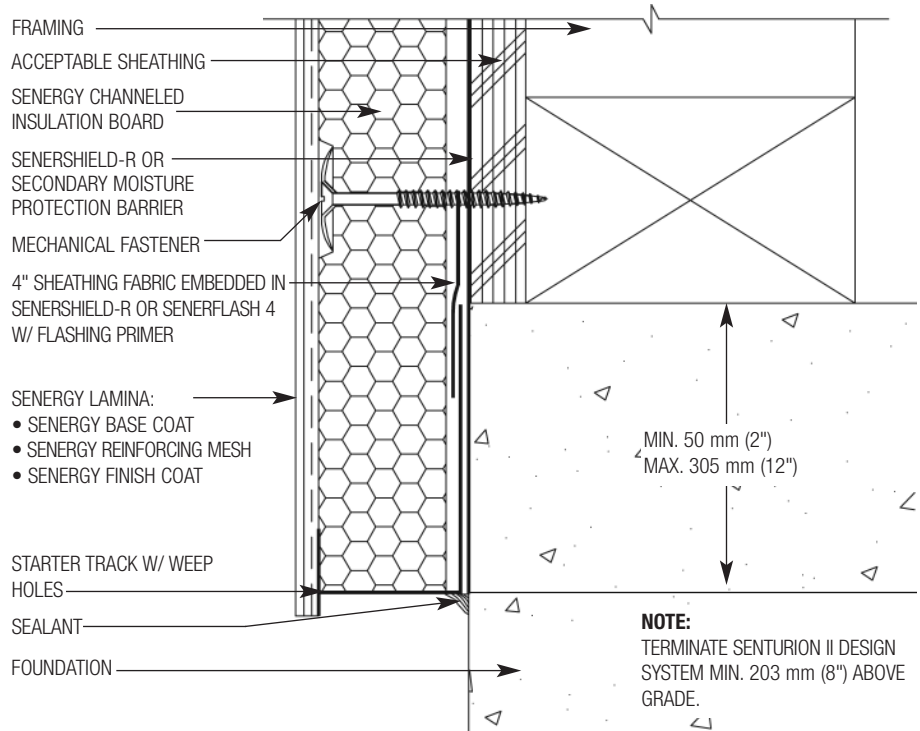
SII-21 TYPICAL TERMINATION AT TOP OF DECK



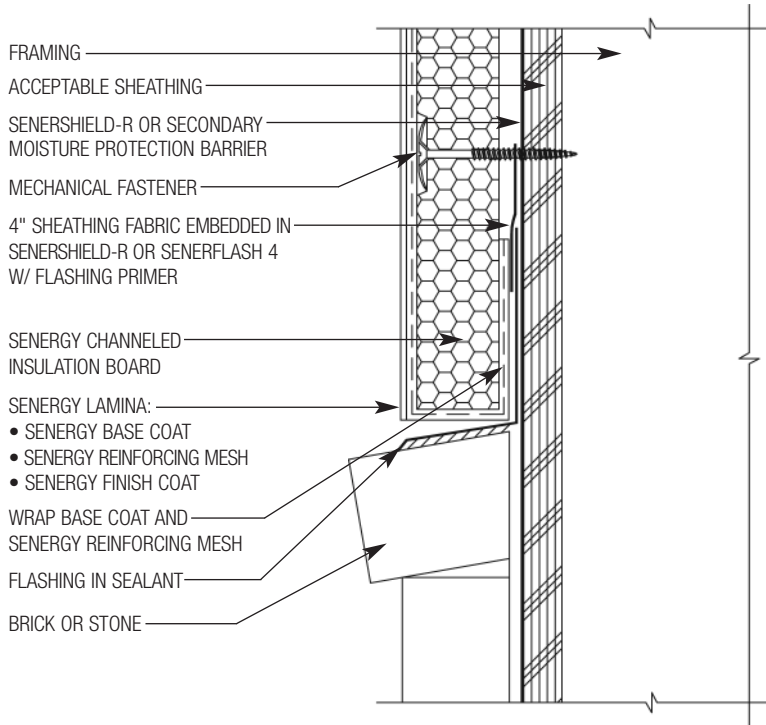
SII-22 TYPICAL TERMINATION AT BOTTOM OF DECK



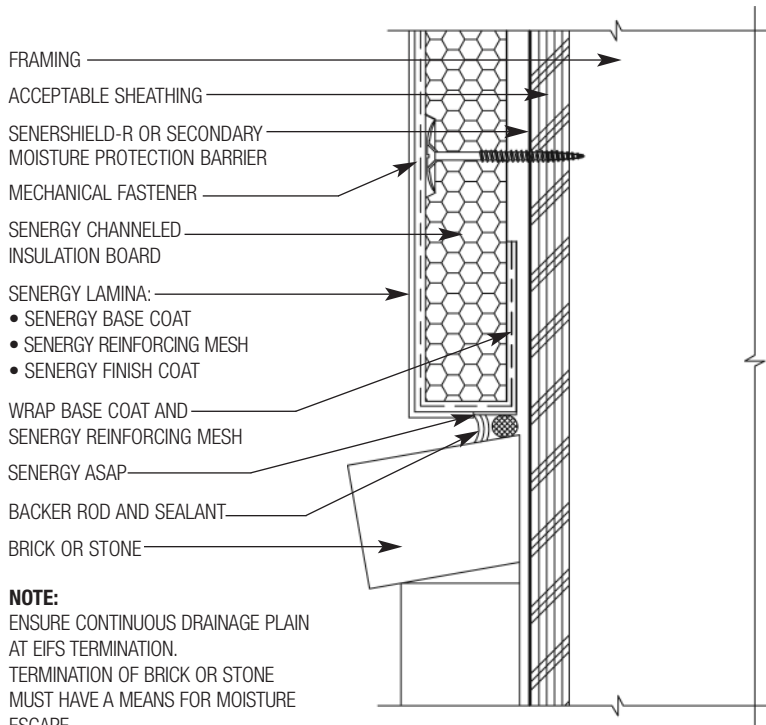
SII-23 TYPICAL TERMINATION AT FOUNDATION



SII-24 TYPICAL TERMINATION AT FOUNDATION



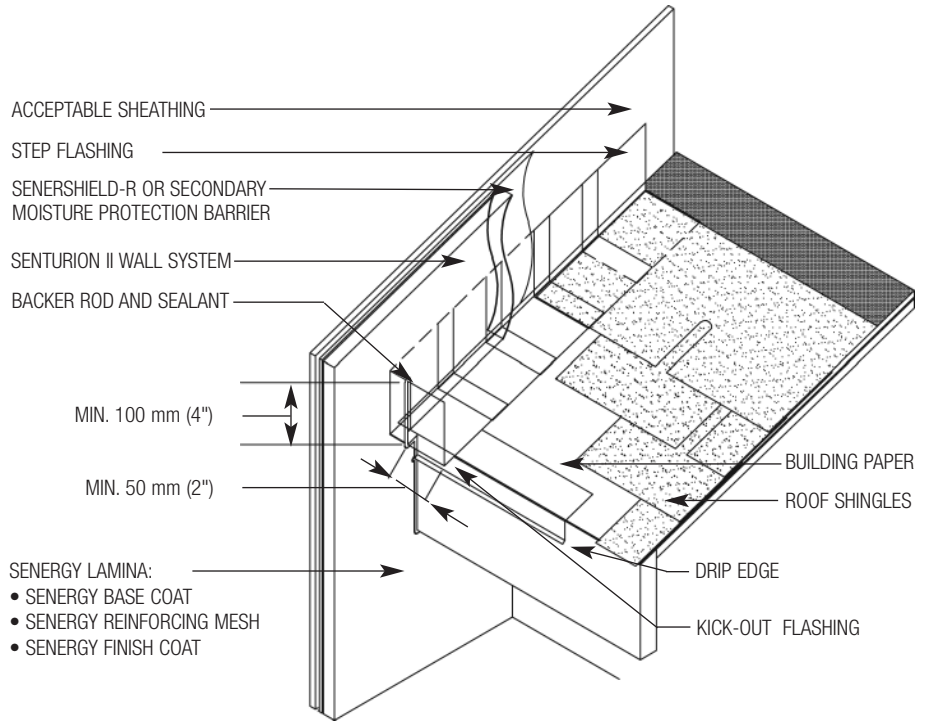
SII-25 TYPICAL TERMINATION AT BRICK OR STONE



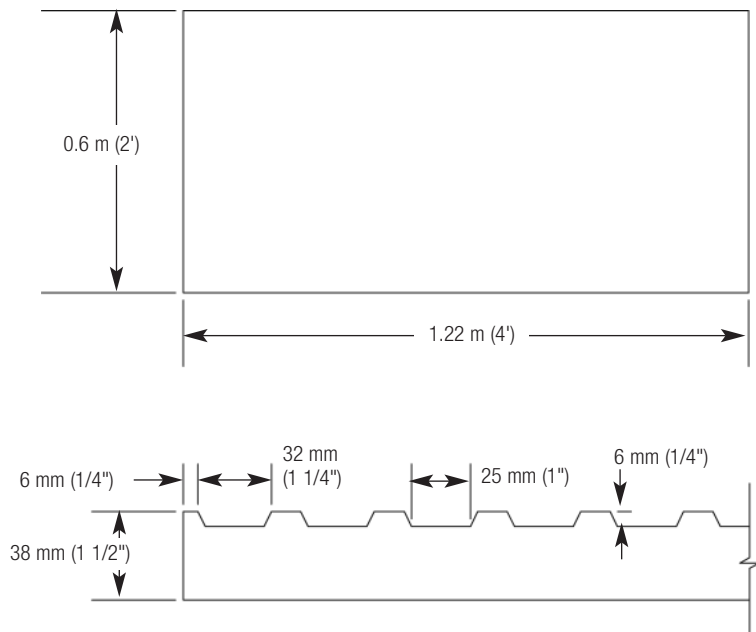
SII-26 TYPICAL TERMINATION AT BRICK OR STONE

NOTE:

- KICK-OUT FLASHING MUST BE ANGLED 100° MIN. TO ALLOW FOR PROPER DRAINAGE.
- KICK-OUT FLASHING SEAMS MUST BE SOLDERED OR SEALED WITH APPROPRIATE SEALANT.
- TERMINATE SENTURION II WALL SYSTEM MIN. 50 mm (2") ABOVE ROOF.



SII-27 TYPICAL KICK-OUT FLASHING DETAIL



SII-28 TYPICAL SENTURION II CHANNELED INSULATION BOARD PROFILE

General Notes

BASF Wall Systems is an operating unit of BASF Construction Chemicals, LLC. (hereinafter referred to as "BASF Wall Systems"). These details are presented in good faith by BASF Wall Systems and represent typical and/or general conditions. They are offered as a guide for consideration to assist the designer, specifier, installer and/or owner. The responsibility remains with the user for the design of any system. For conditions not shown, consult BASF Wall Systems for specific recommendations. Consult current Senergy technical bulletins for such information as acceptable sealants, insulation attachment methods, installation of air/weather barriers, residential policy, code and test reports, geo-climatic considerations, etc. Installation requirements for sealant (joint size configuration, primers, bond breakers) shall be in accordance with sealant manufacturer's specifications and instructions.

Technical Support

Consult the BASF Wall Systems' Technical Services Department for specific recommendations concerning all other applications. Consult the Senergy website, www.senergy.cc, for additional information about products and systems and for updated literature.

Residential Policy

On one and two-family residential framed construction, BASF Wall Systems requires that the wall system selected be one that includes provisions for moisture drainage. The choices include Senturion® line of water managed EIFS, commercial Senerflex® Wall Systems integrating moisture management features, Senergy Stucco Wall System, and Senergy Cement-Board Stucco™ Systems. Senergy Exterior Surfacing Systems for insulating concrete forms are also acceptable. There are no exceptions to this policy. Under no circumstances will BASF Wall Systems warrant the use of any other system on this type of construction without expressed written authorization from BASF Wall Systems [Residential construction using EIFS on masonry (CMU) or poured concrete does not require the additional water management provisions described above.] See the Senergy Residential Policy Bulletin for a more detailed discussion of this topic. Consult BASF Wall Systems Technical Services Department for specific recommendations concerning all other applications. Consult the Senergy website, www.senergy.cc for additional information about products and systems

Disclaimer

This information and all further technical advice are based on BASF Wall Systems' present knowledge and experience. However, BASF assumes no liability for providing such information and advice including the extent to which such information and advice may relate to existing third party intellectual property rights, especially patent rights. In particular, BASF Wall Systems disclaims any and all CONDITIONS AND WARRANTIES, WHETHER EXPRESS OR IMPLIED, INCLUDING THE IMPLIED WARRANTIES OF FITNESS FOR A PARTICULAR PURPOSE OR MERCHANTABILITY. BASF WALL SYSTEMS SHALL NOT BE RESPONSIBLE FOR CONSEQUENTIAL, INDIRECT OR INCIDENTAL DAMAGES (INCLUDING LOSS OF PROFITS) OF ANY KIND. BASF Wall Systems reserves the right to make any changes according to technological progress or further developments. It is the customer's responsibility and obligation to carefully inspect and test any incoming goods. Performance of the product(s) described herein should be verified by testing and carried out only by qualified experts. It is the sole responsibility of the customer to carry out and arrange for any such testing. Reference to trade names used by other companies is neither a recommendation, nor an endorsement of any product and does not imply that similar products could not be used.

BASF Wall Systems

3550 St. Johns Bluff Road South
Jacksonville, FL 32224-2614
Phone 800 • 221 • 9255
Fax 904 • 996 • 6300
www.senergy.cc