

Senergy[®]

Stucco Resurfacing System

Typical Details



A brand of
**MASTER[®]
BUILDERS**
SOLUTIONS

Senergy Stucco Resurfacing System

Typical Details

Table of Contents

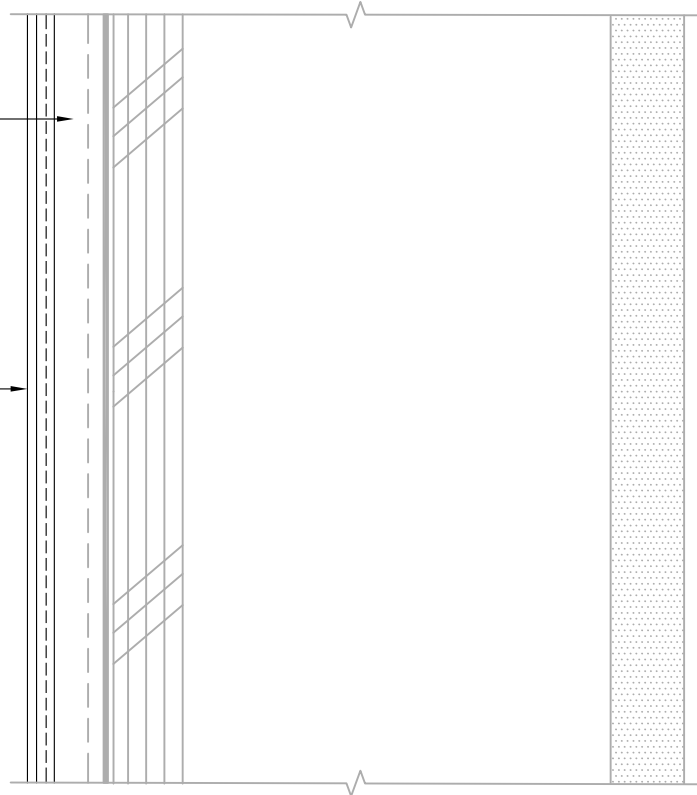
1 Typical Lamina Application	14 Typical Light Fixture
2 Typical Isometric View	15 Typical Dryer Vent
3 Typical Surface Control Joint	16 Termination at Foundation
4 Typical Clad Window Jamb	17 Typical Metal Coping
5 Typical Clad Window Head	18 Typical Corner Application
6 Typical Clad Window Sill	
7 Typical Primed Window Head	
8 Typical Primed Window Jamb	
9 Typical Primed Window Sill	
10 Typical Horizontal Expansion Joint at Floor Line	
11 Typical Termination at Soffit/Gable	
12 Typical Downspout Application	
13 Typical Pipe Penetration	

Notes:

- Unsatisfactory conditions shall be reported to the General Contractor and corrected before the application of Master Builders Solutions- Wall Systems products.
- Install Master Builders Solutions materials in accordance with current installation instructions.
- The details within represent Master Builders Solutions- Wall Systems latest recommendations. They are presented in good faith by Master Builders Solutions- Wall Systems. The details are subject to change without notice. Master Builders Solutions- Wall Systems accepts no liability for the end use of the details. For conditions not shown, Master Builders Solutions- Wall Systems for review of specific detail.

EXISTING STUCCO SYSTEM

SENERGY LAMINA:
SENERGY BASE COAT
SENERGY REINFORCING MESH
OR BASF DIAMONDSHIELD
SENERGY FINISH COAT



REFERENCE SMaRT STUCCO PROCEDURES AND RESURFACING SPECIFICATION FOR FURTHER INFORMATION

TYPICAL LAMINA APPLICATION

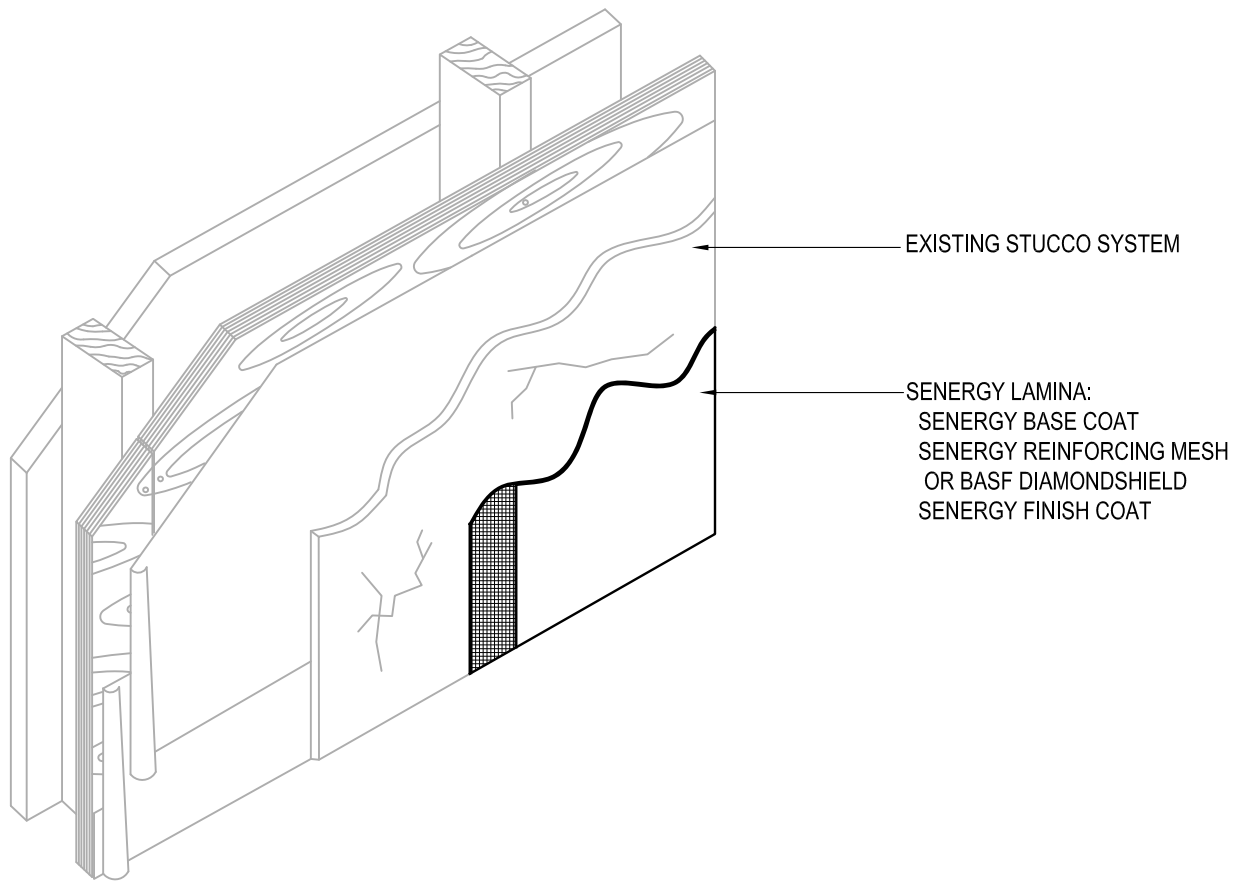
SENERGY STUCCO RESURFACING SYSTEM

SCALE: NTS

01

Structure, substrates, flashing, and other items which are not part of the BASF SENERGY *Stucco Resurfacing System* are the responsibility of others. This detail is subject to change without notice. BASF Corporation - Wall Systems (herein after BASF Wall Systems) accepts no liability for the end use of this detail. For conditions not shown, consult BASF Wall Systems for review of specific detail.


We create chemistry



REFERENCE SMaRT STUCCO PROCEDURES AND RESURFACING SPECIFICATION FOR FURTHER INFORMATION

TYPICAL ISOMETRIC VIEW SENERGY STUCCO RESURFACING SYSTEM

SCALE: NTS

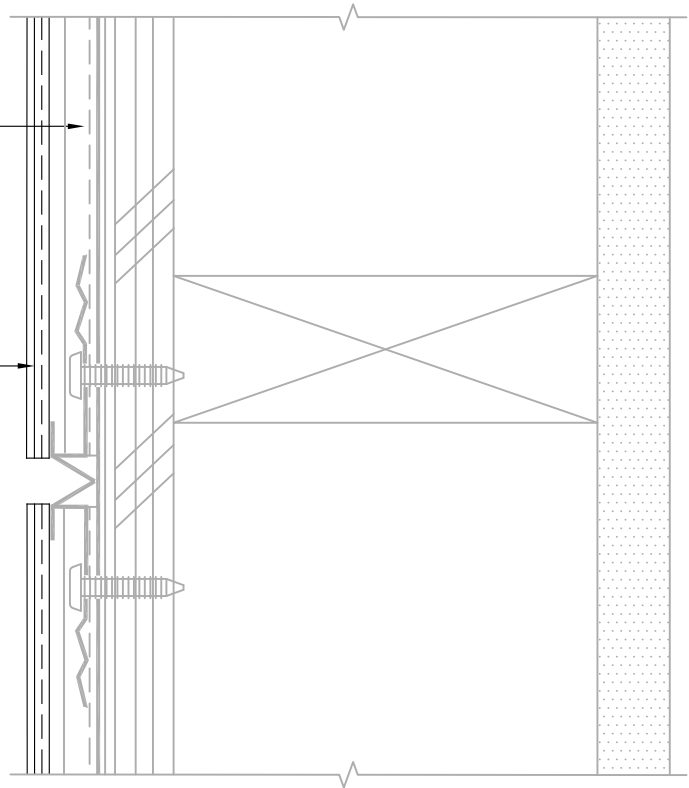
02

Structure, substrates, flashing, and other items which are not part of the BASF SENERGY *Stucco Resurfacing System* are the responsibility of others. This detail is subject to change without notice. BASF Corporation - Wall Systems (herein after BASF Wall Systems) accepts no liability for the end use of this detail. For conditions not shown, consult BASF Wall Systems for review of specific detail.

BASF
We create chemistry

EXISTING STUCCO SYSTEM

SENERGY LAMINA:
SENERGY BASE COAT
SENERGY REINFORCING MESH
OR BASF DIAMONDSHIELD
SENERGY FINISH COAT



REFERENCE SMaRT STUCCO PROCEDURES AND RESURFACING SPECIFICATION FOR FURTHER INFORMATION

TYPICAL SURFACE CONTROL JOINT SENERGY STUCCO RESURFACING SYSTEM

SCALE: NTS

03

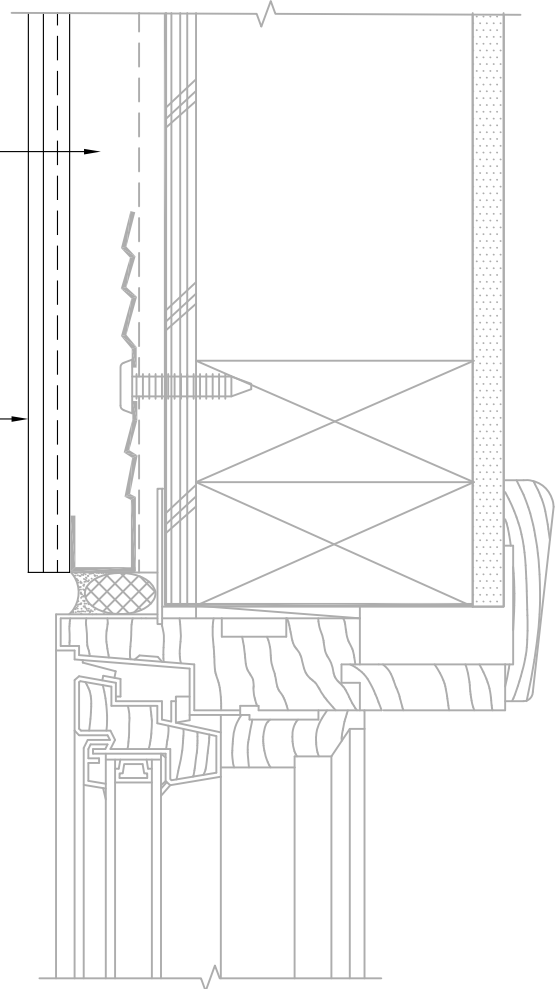
Structure, substrates, flashing, and other items which are not part of the BASF SENERGY *Stucco Resurfacing System* are the responsibility of others. This detail is subject to change without notice. BASF Corporation - Wall Systems (herein after BASF Wall Systems) accepts no liability for the end use of this detail. For conditions not shown, consult BASF Wall Systems for review of specific detail.


We create chemistry

EXISTING STUCCO SYSTEM

SENERGY LAMINA:
SENERGY BASE COAT
SENERGY REINFORCING MESH
OR BASF DIAMONDSHIELD
SENERGY FINISH COAT

NOTE: IF SEALANT IS REMOVED PRIOR
TO SENERGY LAMINA APPLICATION,
APPLY BASECOAT INTO THE JOINT. USE
MASTERSEAL NP1 / NP2 / NP100 / OR
NP150 W/ MASTERSEAL P173 PRIMER*



(PLAN VIEW)

*BY OTHERS

REFERENCE SMaRT STUCCO PROCEDURES AND RESURFACING SPECIFICATION FOR FURTHER INFORMATION

TYPICAL CLAD WINDOW JAMB

SENERGY STUCCO RESURFACING SYSTEM

SCALE: NTS

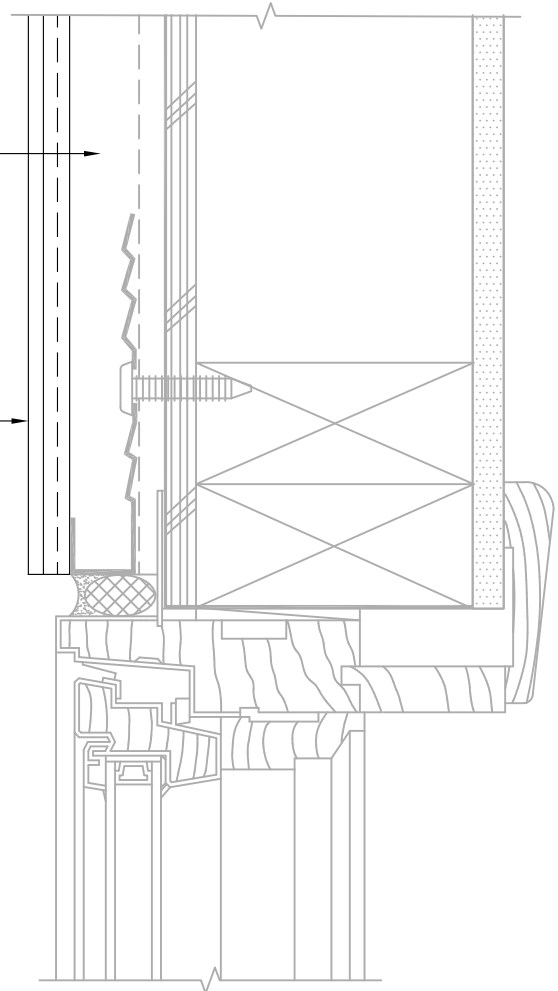
04

Structure, substrates, flashing, and other items which are not part of the BASF SENERGY *Stucco Resurfacing System* are the responsibility of others. This detail is subject to change without notice. BASF Corporation - Wall Systems (herein after BASF Wall Systems) accepts no liability for the end use of this detail. For conditions not shown, consult BASF Wall Systems for review of specific detail.

BASF
We create chemistry

EXISTING STUCCO SYSTEM

SENERGY LAMINA:
SENERGY BASE COAT
SENERGY REINFORCING MESH
OR BASF DIAMONDSHIELD
SENERGY FINISH COAT



(PLAN VIEW)

REFERENCE SMaRT STUCCO PROCEDURES AND RESURFACING SPECIFICATION FOR FURTHER INFORMATION

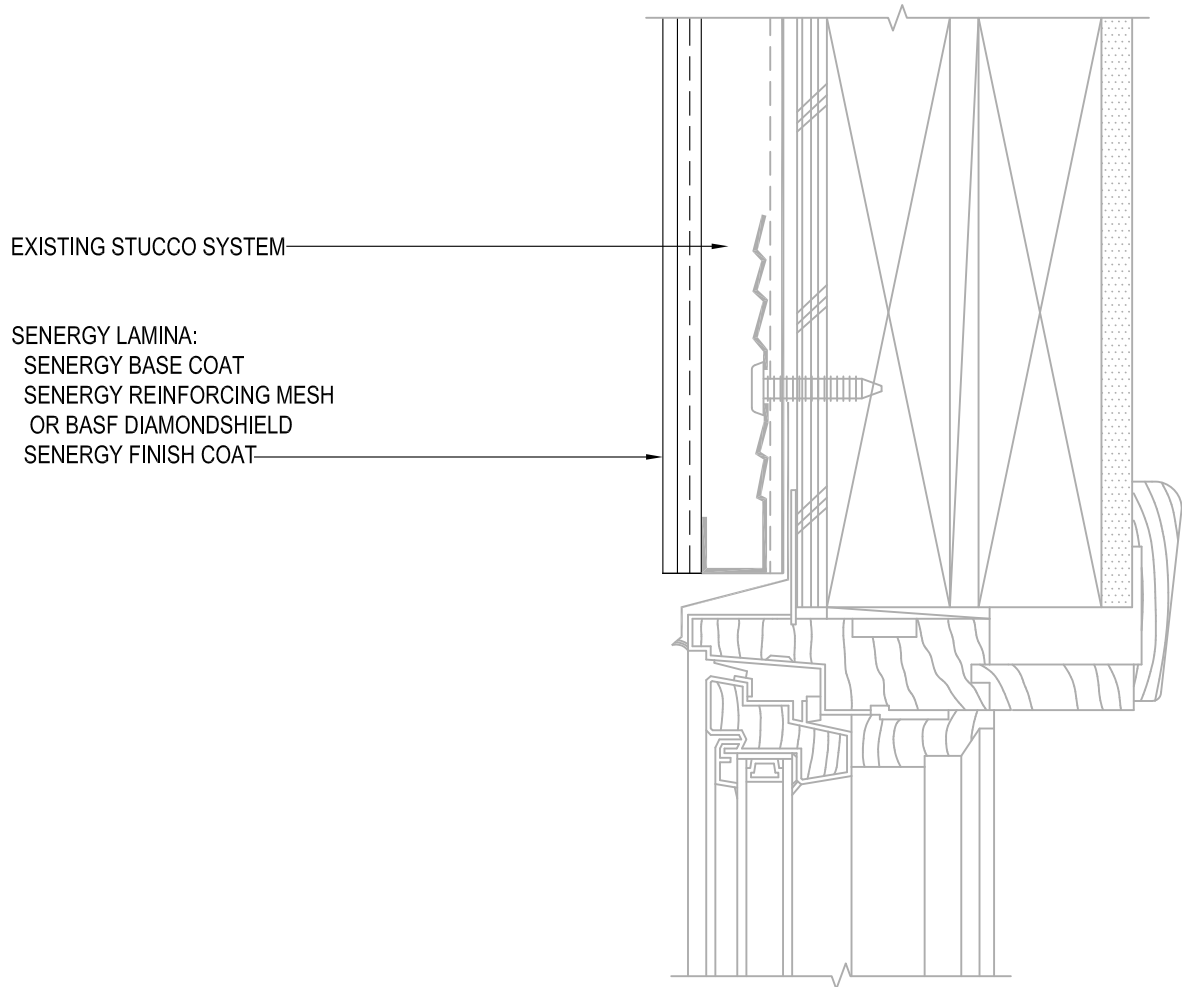
TYPICAL CLAD WINDOW JAMB SENERGY STUCCO RESURFACING SYSTEM

SCALE: NTS

04

Structure, substrates, flashing, and other items which are not part of the BASF SENERGY *Stucco Resurfacing System* are the responsibility of others. This detail is subject to change without notice. BASF Corporation - Wall Systems (herein after BASF Wall Systems) accepts no liability for the end use of this detail. For conditions not shown, consult BASF Wall Systems for review of specific detail.

BASF
We create chemistry



REFERENCE SMaRT STUCCO PROCEDURES AND RESURFACING SPECIFICATION FOR FURTHER INFORMATION

TYPICAL CLAD WINDOW HEAD SENERGY STUCCO RESURFACING SYSTEM

SCALE: NTS

05

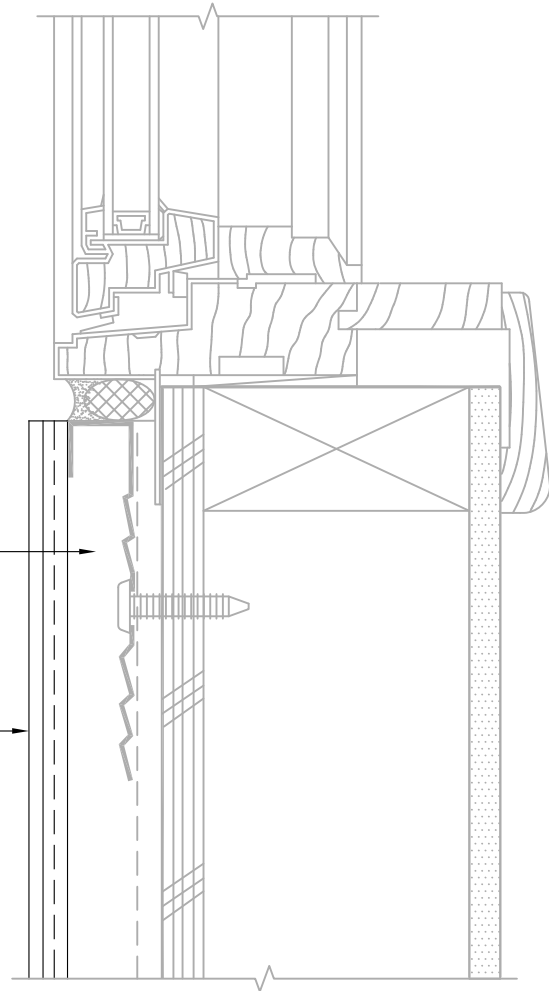
Structure, substrates, flashing, and other items which are not part of the BASF SENERGY *Stucco Resurfacing System* are the responsibility of others. This detail is subject to change without notice. BASF Corporation - Wall Systems (herein after BASF Wall Systems) accepts no liability for the end use of this detail. For conditions not shown, consult BASF Wall Systems for review of specific detail.

■ • BASF

We create chemistry

EXISTING STUCCO SYSTEM

SENERGY LAMINA:
SENERGY BASE COAT
SENERGY REINFORCING MESH
OR BASF DIAMONSHIELD
SENERGY FINISH COAT



REFERENCE SMaRT STUCCO PROCEDURES AND RESURFACING SPECIFICATION FOR FURTHER INFORMATION

TYPICAL CLAD WINDOW SILL SENERGY STUCCO RESURFACING SYSTEM

SCALE: NTS

06

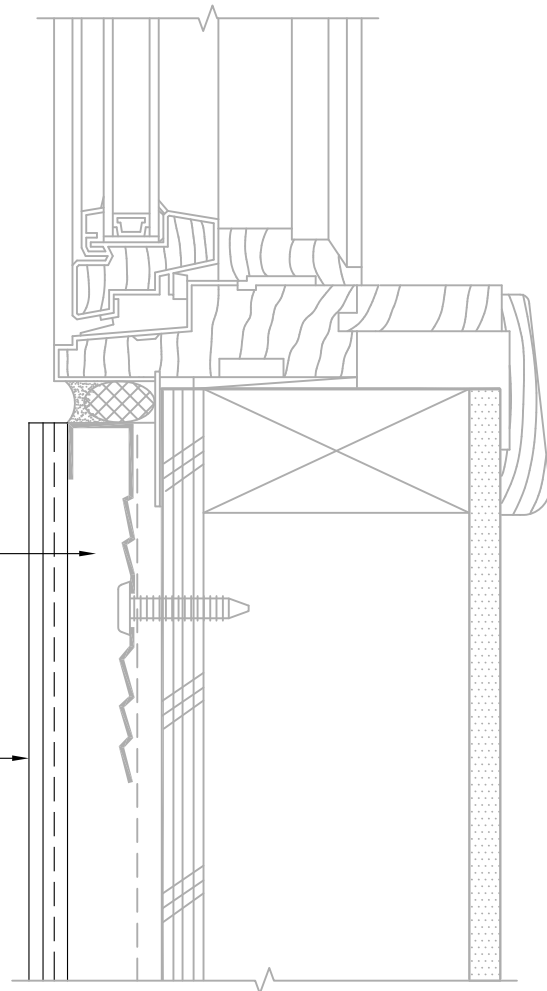
Structure, substrates, flashing, and other items which are not part of the BASF SENERGY *Stucco Resurfacing System* are the responsibility of others. This detail is subject to change without notice. BASF Corporation - Wall Systems (herein after BASF Wall Systems) accepts no liability for the end use of this detail. For conditions not shown, consult BASF Wall Systems for review of specific detail.

 **BASF**
We create chemistry

NOTE: IF SEALANT IS REMOVED PRIOR TO SENERGY LAMINA APPLICATION, APPLY BASECOAT INTO THE JOINT. USE MASTERSEAL NP1 / NP2 / NP100 / OR NP150 W/ MASTERSEAL P173 PRIMER*

EXISTING STUCCO SYSTEM

SENERGY LAMINA:
SENERGY BASE COAT
SENERGY REINFORCING MESH
OR BASF DIAMONDSHIELD
SENERGY FINISH COAT



*BY OTHERS

REFERENCE SMaRT STUCCO PROCEDURES AND RESURFACING SPECIFICATION FOR FURTHER INFORMATION

TYPICAL CLAD WINDOW SILL

SENERGY STUCCO RESURFACING SYSTEM

SCALE: NTS

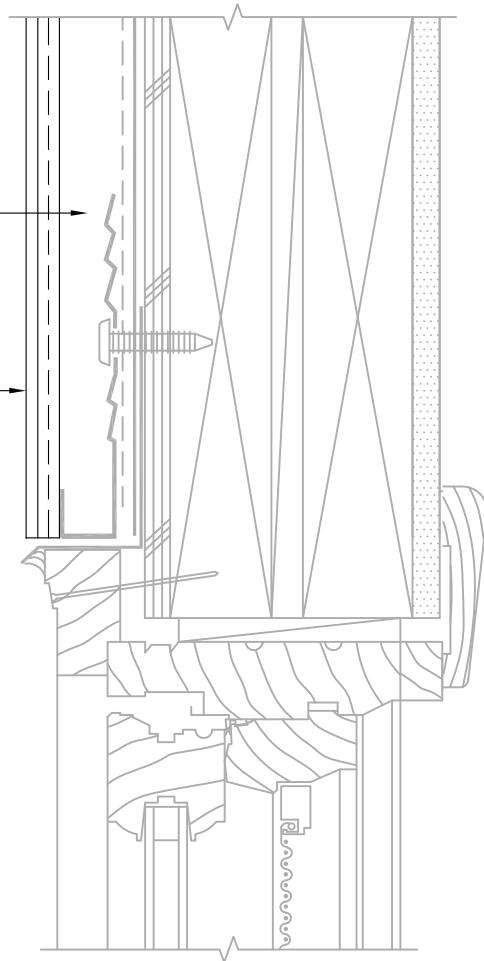
06

Structure, substrates, flashing, and other items which are not part of the BASF SENERGY *Stucco Resurfacing System* are the responsibility of others. This detail is subject to change without notice. BASF Corporation - Wall Systems (herein after BASF Wall Systems) accepts no liability for the end use of this detail. For conditions not shown, consult BASF Wall Systems for review of specific detail.

BASF
We create chemistry

EXISTING STUCCO SYSTEM

SENERGY LAMINA:
SENERGY BASE COAT
SENERGY REINFORCING MESH
OR BASF DIAMONDSHIELD
SENERGY FINISH COAT



REFERENCE SMaRT STUCCO PROCEDURES AND RESURFACING SPECIFICATION FOR FURTHER INFORMATION

TYPICAL PRIMED WINDOW HEAD SENERGY STUCCO RESURFACING SYSTEM

SCALE: NTS

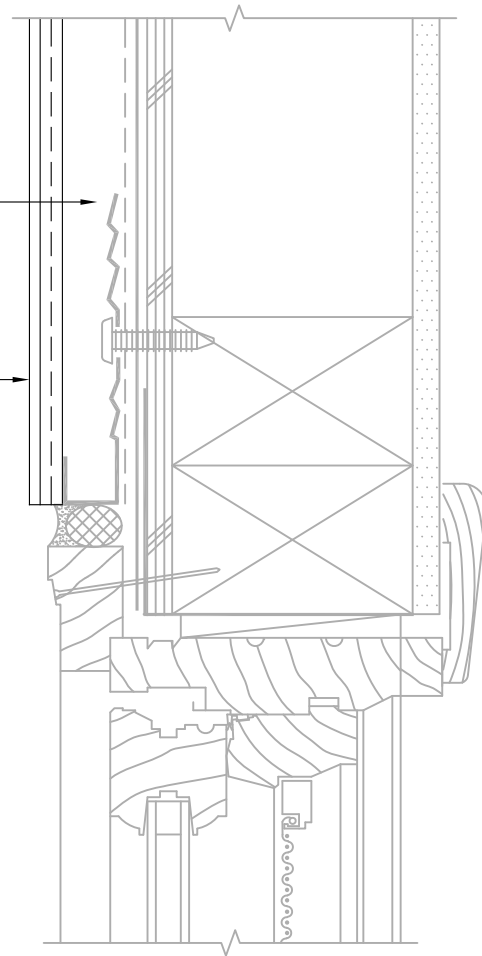
07

Structure, substrates, flashing, and other items which are not part of the BASF SENERGY *Stucco Resurfacing System* are the responsibility of others. This detail is subject to change without notice. BASF Corporation - Wall Systems (herein after BASF Wall Systems) accepts no liability for the end use of this detail. For conditions not shown, consult BASF Wall Systems for review of specific detail.

BASF
We create chemistry

EXISTING STUCCO SYSTEM

SENERGY LAMINA:
SENERGY BASE COAT
SENERGY REINFORCING MESH
OR BASF DIAMONDSHIELD
SENERGY FINISH COAT



REFERENCE SMaRT STUCCO PROCEDURES AND RESURFACING SPECIFICATION FOR FURTHER INFORMATION

TYPICAL PRIMED WINDOW JAMB SENERGY STUCCO RESURFACING SYSTEM

SCALE: NTS

08

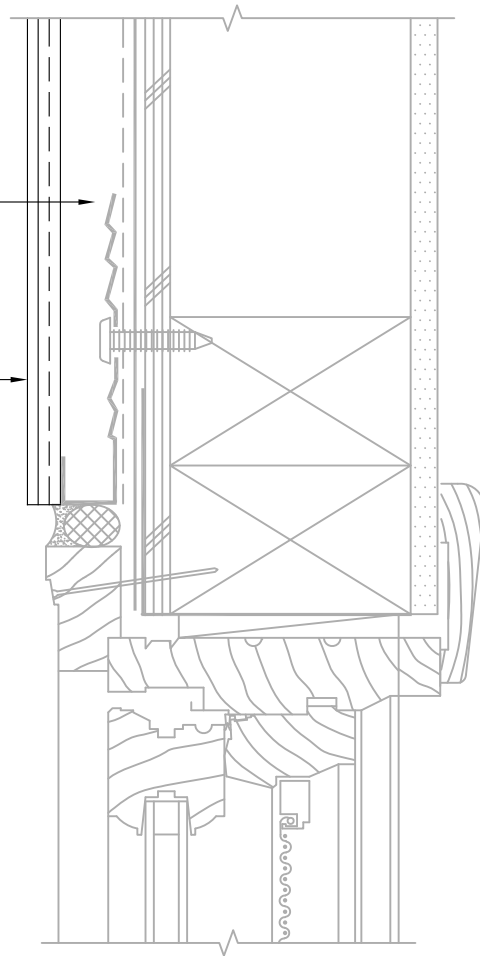
Structure, substrates, flashing, and other items which are not part of the BASF SENERGY *Stucco Resurfacing System* are the responsibility of others. This detail is subject to change without notice. BASF Corporation - Wall Systems (herein after BASF Wall Systems) accepts no liability for the end use of this detail. For conditions not shown, consult BASF Wall Systems for review of specific detail.

 **BASF**
We create chemistry

EXISTING STUCCO SYSTEM

SENERGY LAMINA:
SENERGY BASE COAT
SENERGY REINFORCING MESH
OR BASF DIAMONDSHIELD
SENERGY FINISH COAT

NOTE: IF SEALANT IS REMOVED PRIOR TO
SENERGY LAMINA APPLICATION, APPLY
BASECOAT INTO THE JOINT. USE
MASTERSEAL NP1 / NP2 / NP100 / OR NP150
W/ MASTERSEAL P173 PRIMER*



REFERENCE SMaRT STUCCO PROCEDURES AND RESURFACING SPECIFICATION FOR FURTHER INFORMATION

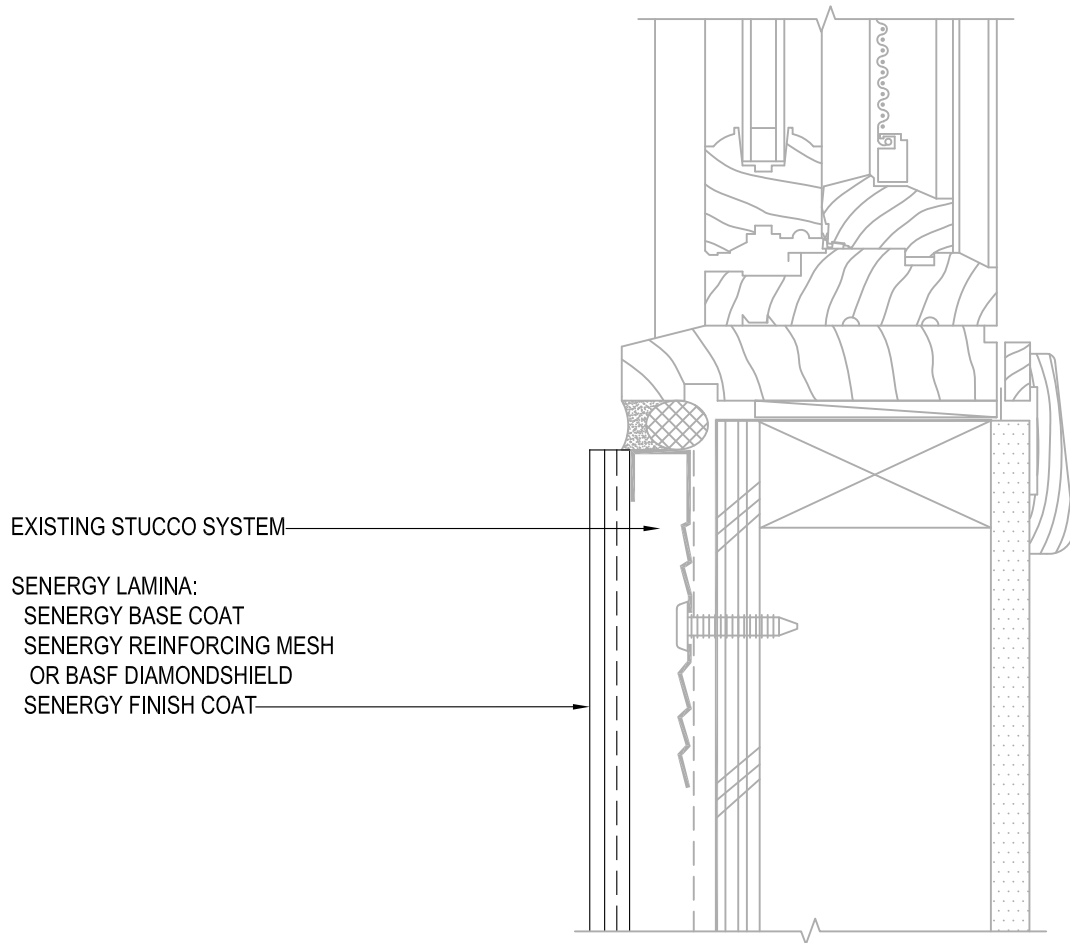
TYPICAL PRIMED WINDOW JAMB SENERGY STUCCO RESURFACING SYSTEM

SCALE: NTS

08

Structure, substrates, flashing, and other items which are not part of the BASF SENERGY *Stucco Resurfacing System* are the responsibility of others. This detail is subject to change without notice. BASF Corporation - Wall Systems (herein after BASF Wall Systems) accepts no liability for the end use of this detail. For conditions not shown, consult BASF Wall Systems for review of specific detail.


We create chemistry



REFERENCE SMaRT STUCCO PROCEDURES AND RESURFACING SPECIFICATION FOR FURTHER INFORMATION

TYPICAL PRIMED WINDOW SILL SENERGY STUCCO RESURFACING SYSTEM

SCALE: NTS

09

Structure, substrates, flashing, and other items which are not part of the BASF SENERGY *Stucco Resurfacing System* are the responsibility of others. This detail is subject to change without notice. BASF Corporation - Wall Systems (herein after BASF Wall Systems) accepts no liability for the end use of this detail. For conditions not shown, consult BASF Wall Systems for review of specific detail.

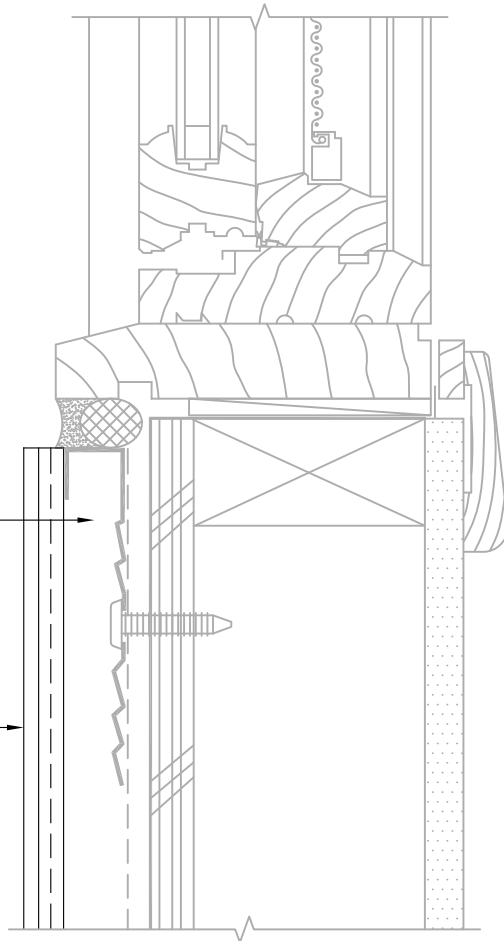
■ BASF

We create chemistry

NOTE: IF SEALANT IS REMOVED PRIOR TO SENERGY LAMINA APPLICATION, APPLY BASECOAT INTO THE JOINT. USE MASTERSEAL NP1 / NP2 / NP100 / OR NP150 W/ MASTERSEAL P173 PRIMER*

EXISTING STUCCO SYSTEM

SENERGY LAMINA:
SENERGY BASE COAT
SENERGY REINFORCING MESH
OR BASF DIAMONDSHIELD
SENERGY FINISH COAT



REFERENCE SMaRT STUCCO PROCEDURES AND RESURFACING SPECIFICATION FOR FURTHER INFORMATION

TYPICAL PRIMED WINDOW SILL SENERGY STUCCO RESURFACING SYSTEM

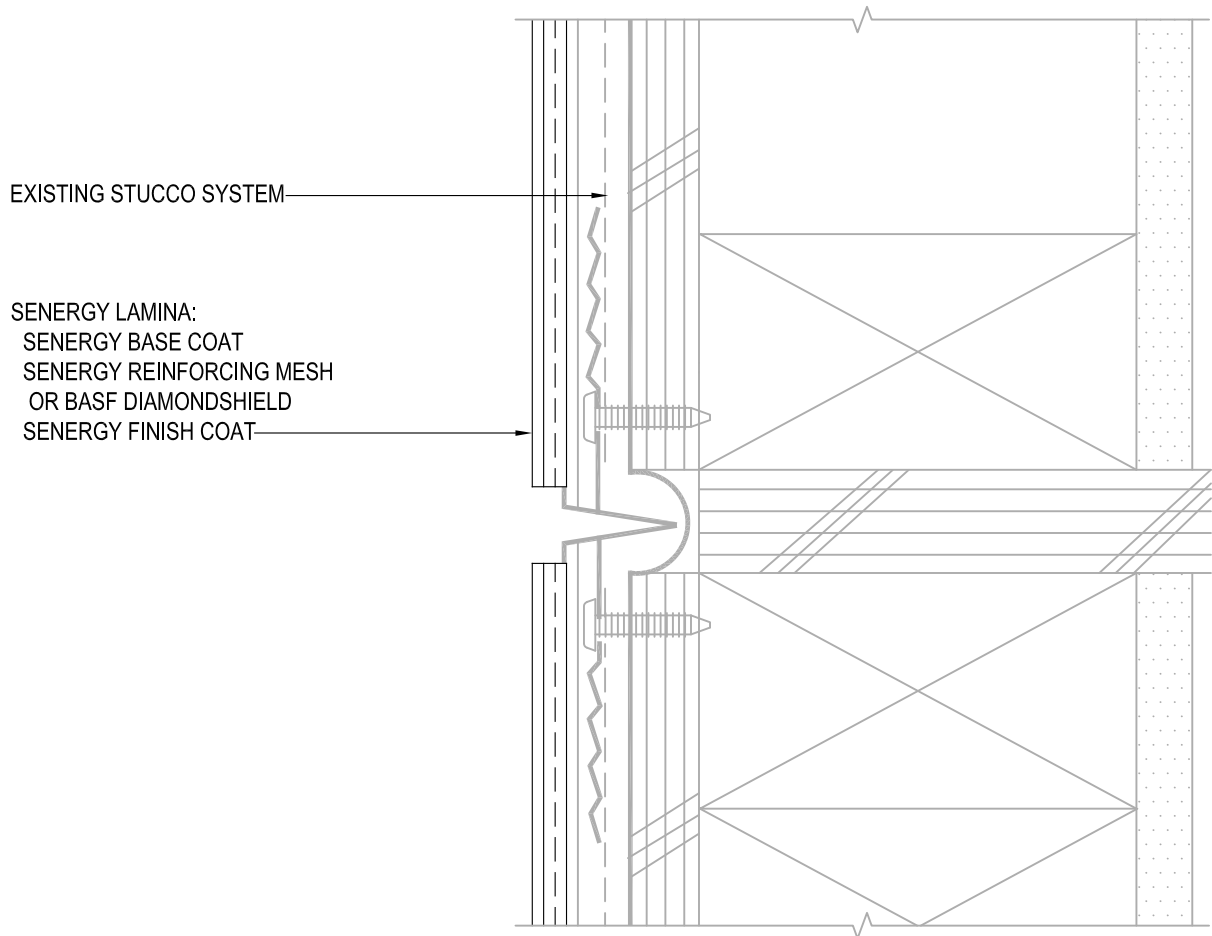
SCALE: NTS

09

Structure, substrates, flashing, and other items which are not part of the BASF SENERGY *Stucco Resurfacing System* are the responsibility of others. This detail is subject to change without notice. BASF Corporation - Wall Systems (herein after BASF Wall Systems) accepts no liability for the end use of this detail. For conditions not shown, consult BASF Wall Systems for review of specific detail.

■ BASF

We create chemistry



REFERENCE SMaRT STUCCO PROCEDURES AND RESURFACING SPECIFICATION FOR FURTHER INFORMATION

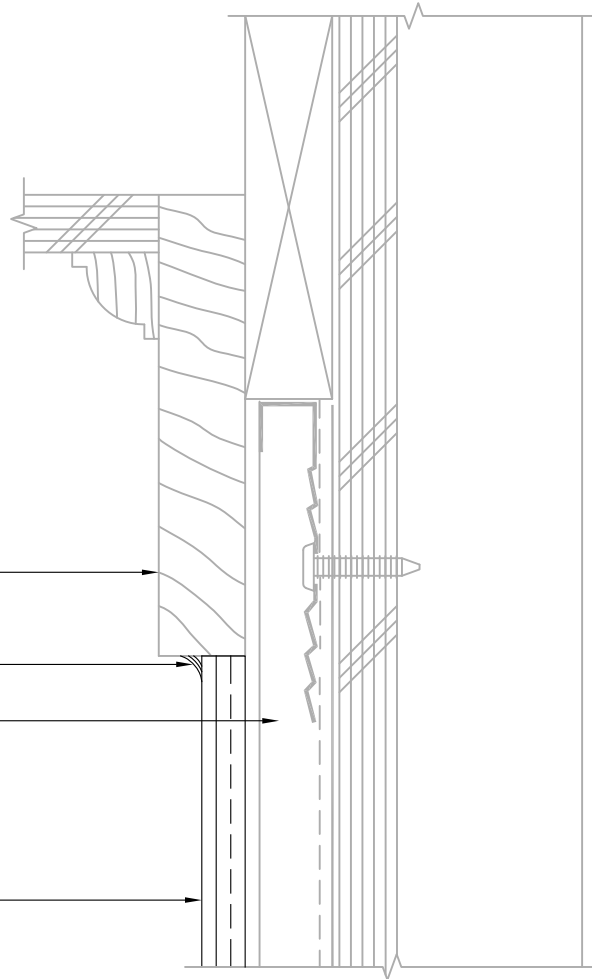
TYPICAL HORIZONTAL EXPANSION JOINT AT FLOOR LINE SENERGY STUCCO RESURFACING SYSTEM

SCALE: NTS

10

Structure, substrates, flashing, and other items which are not part of the BASF SENERGY *Stucco Resurfacing System* are the responsibility of others. This detail is subject to change without notice. BASF Corporation - Wall Systems (herein after BASF Wall Systems) accepts no liability for the end use of this detail. For conditions not shown, consult BASF Wall Systems for review of specific detail.

BASF
We create chemistry



EXISTING SOFFIT/GABLE

MASTERSEAL NP1/ NP2/ NP100 OR NP150
W/ MASTERSEAL P173 PRIMER*

EXISTING STUCCO SYSTEM

SENERGY LAMINA:
SENERGY BASE COAT
SENERGY REINFORCING MESH
OR BASF DIAMONDSHIELD
SENERGY FINISH COAT

*BY OTHERS

REFERENCE SMaRT STUCCO PROCEDURES AND RESURFACING SPECIFICATION FOR FURTHER INFORMATION

TYPICAL TERMINATION AT SOFFIT/GABLE SENERGY STUCCO RESURFACING SYSTEM

SCALE: NTS

11

Structure, substrates, flashing, and other items which are not part of the BASF SENERGY *Stucco Resurfacing System* are the responsibility of others. This detail is subject to change without notice. BASF Corporation - Wall Systems (herein after BASF Wall Systems) accepts no liability for the end use of this detail. For conditions not shown, consult BASF Wall Systems for review of specific detail.

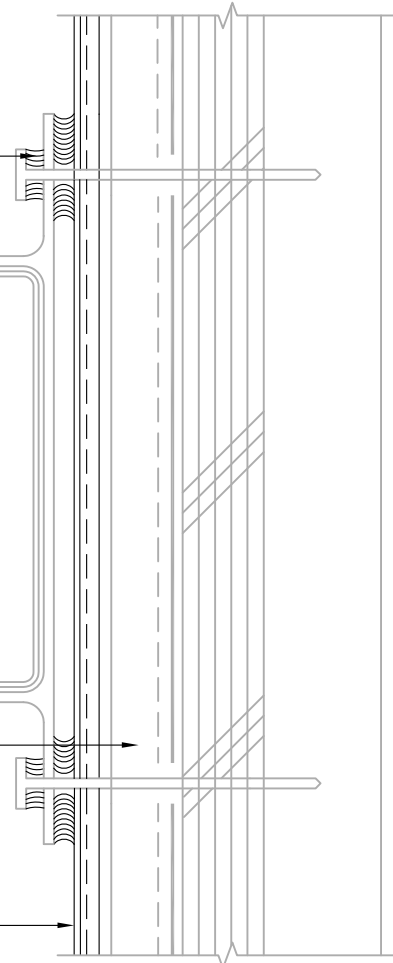
BASF
We create chemistry

MASTERSEAL NP1/ NP2/ NP100 OR NP150
W/ MASTERSEAL P173 PRIMER*

DOWNSPOUT*
**NOTE: REMOVE DOWNSPOUT
PRIOR TO APPLICATION OF
SENERGY LAMINA**

EXISTING STUCCO SYSTEM

SENERGY LAMINA:
SENERGY BASE COAT
SENERGY REINFORCING MESH
OR BASF DIAMONDSHIELD
SENERGY FINISH COAT



*BY OTHERS

REFERENCE SMaRT STUCCO PROCEDURES AND RESURFACING SPECIFICATION FOR FURTHER INFORMATION

TYPICAL DOWNSPOUT APPLICATION SENERGY STUCCO RESURFACING SYSTEM

SCALE: NTS

12

Structure, substrates, flashing, and other items which are not part of the BASF SENERGY *Stucco Resurfacing System* are the responsibility of others. This detail is subject to change without notice. BASF Corporation - Wall Systems (herein after BASF Wall Systems) accepts no liability for the end use of this detail. For conditions not shown, consult BASF Wall Systems for review of specific detail.

BASF
We create chemistry

EXISTING STUCCO SYSTEM

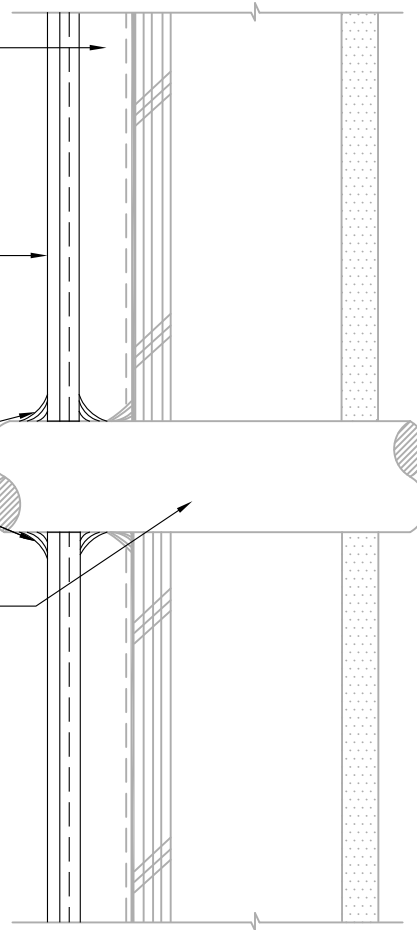
SENERGY LAMINA:
SENERGY BASE COAT
SENERGY REINFORCING MESH
OR BASF DIAMONDSHIELD
SENERGY FINISH COAT

MASTERSEAL NP1/ NP2/ NP100 OR NP150
W/ MASTERSEAL P173 PRIMER*

EXISTING PIPE

NOTE:

- EXISTING SEALANT THAT WILL INTERFERE WITH LAMINA APPLICATION MUST BE REMOVED.
- DO NOT APPLY LAMINA OVER SEALANT



*BY OTHERS

REFERENCE SMaRT STUCCO PROCEDURES AND RESURFACING SPECIFICATION FOR FURTHER INFORMATION

TYPICAL PIPE PENETRATION

SENERGY STUCCO RESURFACING SYSTEM

SCALE: NTS

13

Structure, substrates, flashing, and other items which are not part of the BASF SENERGY *Stucco Resurfacing System* are the responsibility of others. This detail is subject to change without notice. BASF Corporation - Wall Systems (herein after BASF Wall Systems) accepts no liability for the end use of this detail. For conditions not shown, consult BASF Wall Systems for review of specific detail.

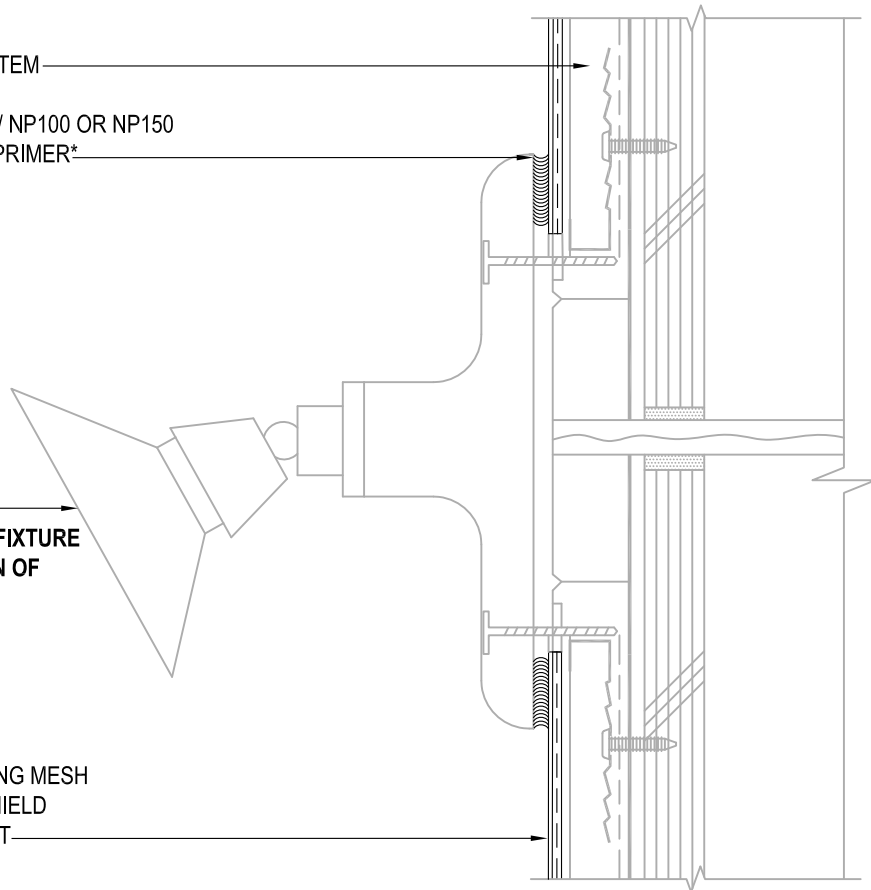
BASF
We create chemistry

EXISTING STUCCO SYSTEM

MASTERSEAL NP1/ NP2/ NP100 OR NP150
W/ MASTERSEAL P173 PRIMER*

LIGHT FIXTURE*
NOTE: REMOVE LIGHT FIXTURE
PRIOR TO APPLICATION OF
SENERGY LAMINA

SENERGY LAMINA:
SENERGY BASE COAT
SENERGY REINFORCING MESH
OR BASF DIAMONDSHIELD
SENERGY FINISH COAT



*BY OTHERS

REFERENCE SMaRT STUCCO PROCEDURES AND RESURFACING SPECIFICATION FOR FURTHER INFORMATION

TYPICAL LIGHT FIXTURE

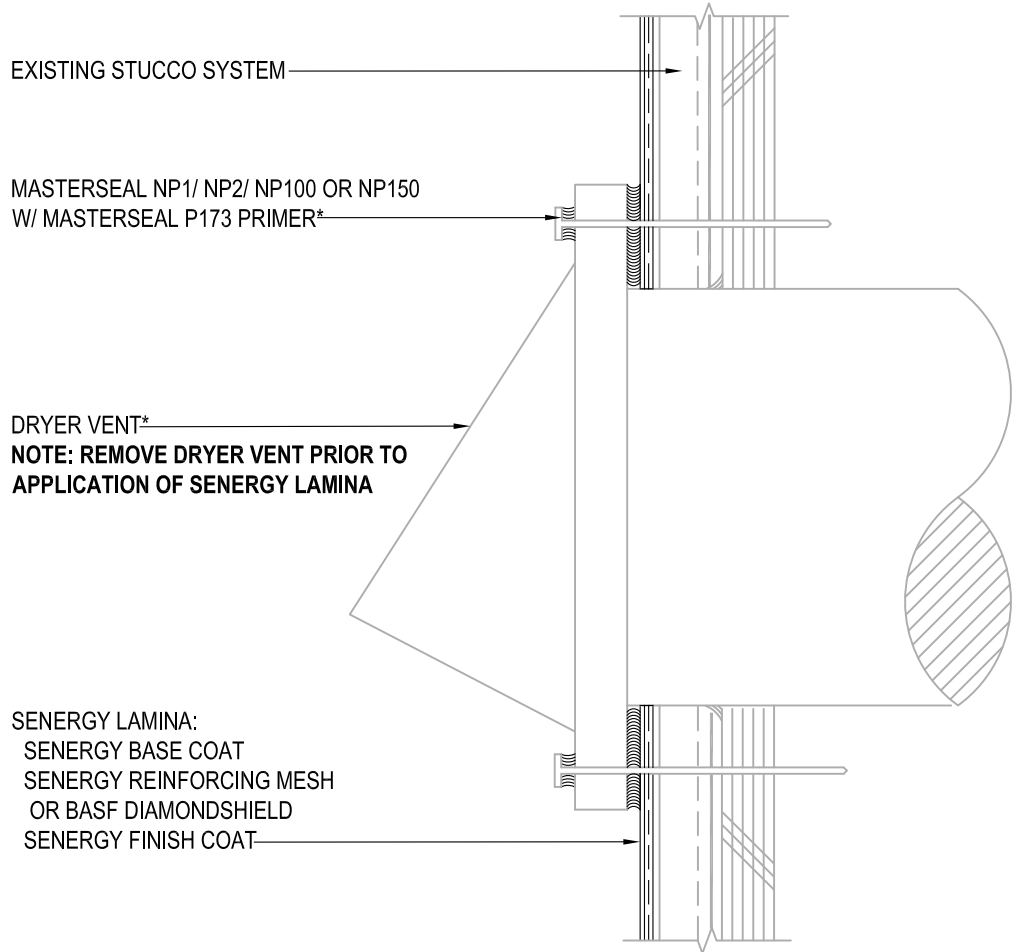
SENERGY STUCCO RESURFACING SYSTEM

SCALE: NTS

14

Structure, substrates, flashing, and other items which are not part of the BASF SENERGY *Stucco Resurfacing System* are the responsibility of others. This detail is subject to change without notice. BASF Corporation - Wall Systems (herein after BASF Wall Systems) accepts no liability for the end use of this detail. For conditions not shown, consult BASF Wall Systems for review of specific detail.


We create chemistry



*BY OTHERS

REFERENCE SMaRT STUCCO PROCEDURES AND RESURFACING SPECIFICATION FOR FURTHER INFORMATION

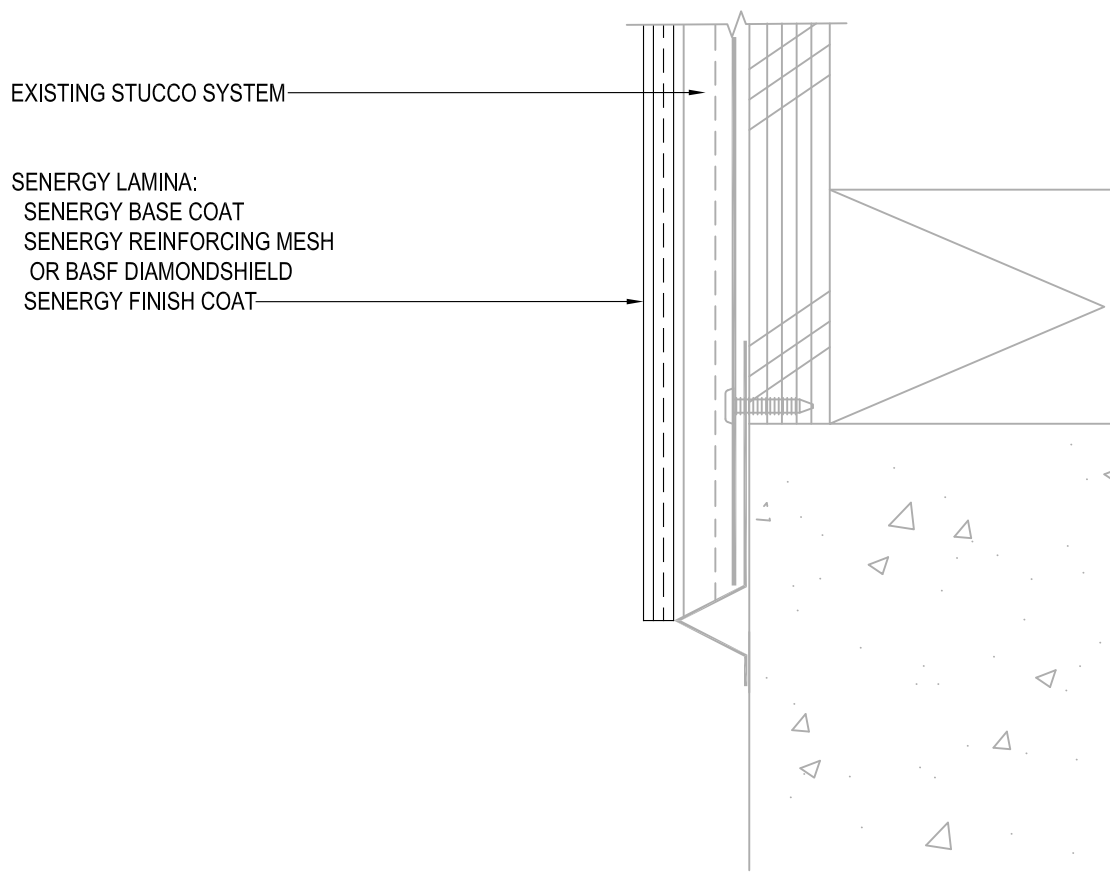
TYPICAL DRYER VENT

SENERGY STUCCO RESURFACING SYSTEM

SCALE: NTS
15

Structure, substrates, flashing, and other items which are not part of the BASF SENERGY *Stucco Resurfacing System* are the responsibility of others. This detail is subject to change without notice. BASF Corporation - Wall Systems (herein after BASF Wall Systems) accepts no liability for the end use of this detail. For conditions not shown, consult BASF Wall Systems for review of specific detail.

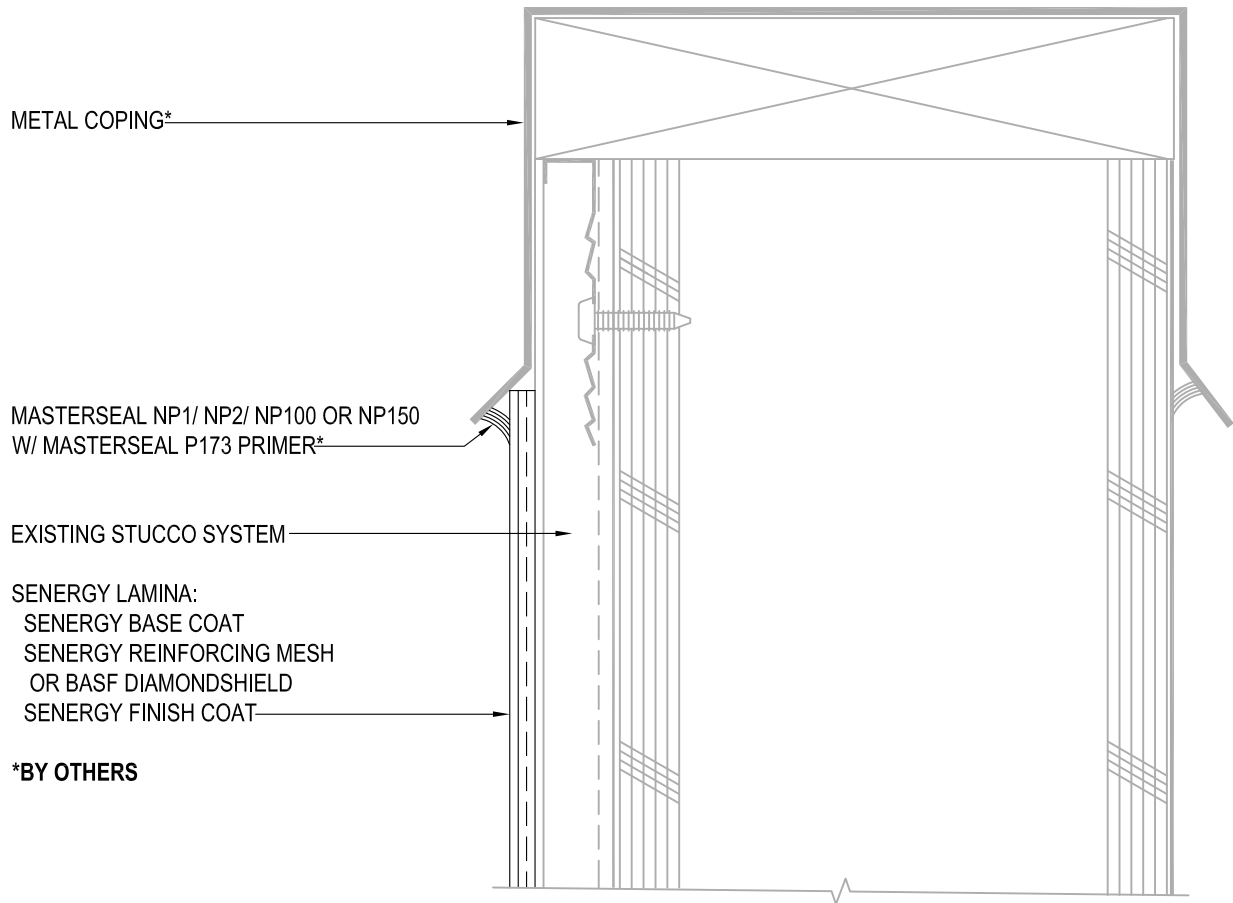




REFERENCE SMaRT STUCCO PROCEDURES AND RESURFACING SPECIFICATION FOR FURTHER INFORMATION

TERMINATION AT FOUNDATION
SENERGY STUCCO RESURFACING SYSTEM

SCALE: NTS	<p>Structure, substrates, flashing, and other items which are not part of the BASF SENERGY <i>Stucco Resurfacing System</i> are the responsibility of others. This detail is subject to change without notice. BASF Corporation - Wall Systems (herein after BASF Wall Systems) accepts no liability for the end use of this detail. For conditions not shown, consult BASF Wall Systems for review of specific detail.</p>	 We create chemistry
16		



REFERENCE SMaRT STUCCO PROCEDURES AND RESURFACING SPECIFICATION FOR FURTHER INFORMATION

TYPICAL METAL COPING SENERGY STUCCO RESURFACING SYSTEM

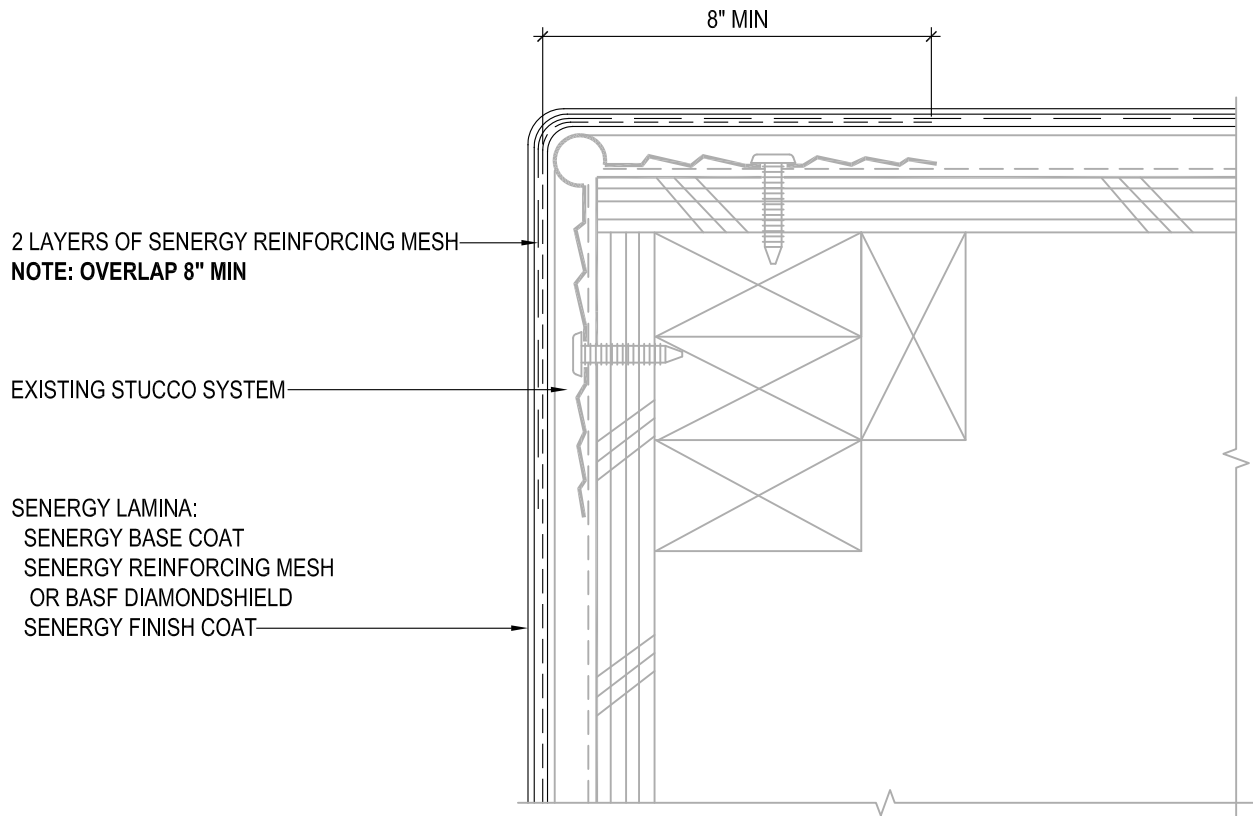
SCALE: NTS

17

Structure, substrates, flashing, and other items which are not part of the BASF SENERGY *Stucco Resurfacing System* are the responsibility of others. This detail is subject to change without notice. BASF Corporation - Wall Systems (herein after BASF Wall Systems) accepts no liability for the end use of this detail. For conditions not shown, consult BASF Wall Systems for review of specific detail.

■ • BASF

We create chemistry



REFERENCE SMaRT STUCCO PROCEDURES AND RESURFACING SPECIFICATION FOR FURTHER INFORMATION

TYPICAL CORNER APPLICATION SENERGY STUCCO RESURFACING SYSTEM

SCALE: NTS

18

Structure, substrates, flashing, and other items which are not part of the BASF SENERGY *Stucco Resurfacing System* are the responsibility of others. This detail is subject to change without notice. BASF Corporation - Wall Systems (herein after BASF Wall Systems) accepts no liability for the end use of this detail. For conditions not shown, consult BASF Wall Systems for review of specific detail.

■ • BASF

We create chemistry