

Senergy[®]

EIFS Resurfacing System

Typical Details

LIBRARY

A brand of
MASTER[®]
BUILDERS
SOLUTIONS

Senergy EIFS Resurfacing System

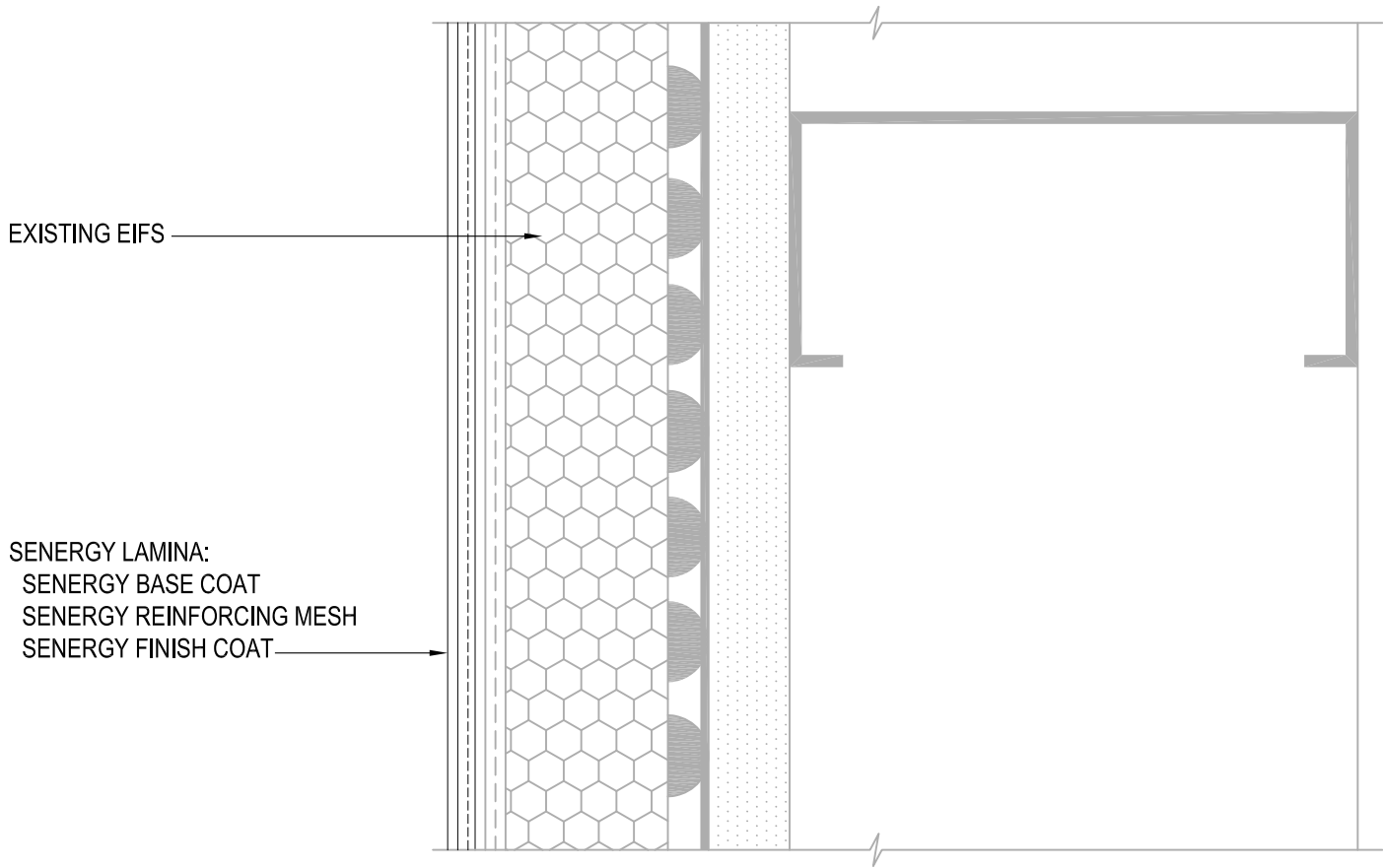
Typical Details

Table of Contents

1	Typical Lamina Application	13	Typical Expansion Joint at Change in Substrate
2	Typical Aesthetic Groove	14	Typical Transition at Soffit and Fascia
3	Typical Window Head (Flush)	15	Typical Vertical Expansion Joint
4	Typical Window Head (Recessed)	16	Typical Pipe Penetration
5	Typical Window Jamb (Flush)	17	Typical Corner Mesh Application
6	Typical Window Jamb (Recessed)	18	Typical Light Fixture
7	Typical Window Sill (Flush)	19	Typical Termination at Foundation
8	Typical Window Sill (Recessed)	20	Typical Termination at Foundation (Flush)
9	Typical Roof Edge Flashing	21	Typical Kick Out Flashing
10	Typical Metal Coping		
11	Typical Parapet Cap		
12	Typical Expansion Joint at Floorline		

Notes:

- Unsatisfactory conditions shall be reported to the General Contractor and corrected before the application of Master Builders Solutions- Wall Systems products.
- Install Master Builders Solutions materials in accordance with current installation instructions.
- The details within represent Master Builders Solutions- Wall Systems latest recommendations. They are presented in good faith by Master Builders Solutions- Wall Systems. The details are subject to change without notice. Master Builders Solutions- Wall Systems accepts no liability for the end use of the details. For conditions not shown, Master Builders Solutions- Wall Systems for review of specific detail.



*BY OTHERS

REFERENCE SMaRT EIFS PROCEDURES AND RESURFACING SPECIFICATION FOR FURTHER INFORMATION

TYPICAL LAMINA APPLICATION

SENERGY EIFS RESURFACING SYSTEM

SCALE: NTS

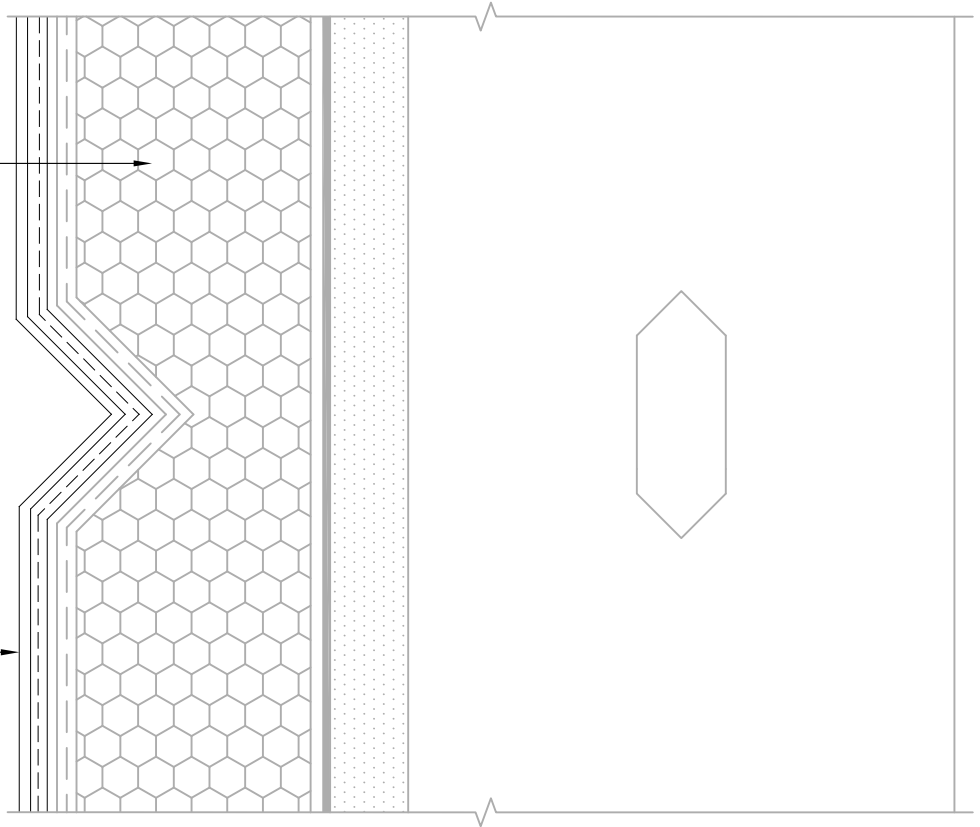
01

Structure, substrates, flashing, and other items which are not part of the BASF SENERGY *EIFS Resurfacing System* are the responsibility of others. This detail is subject to change without notice. BASF Corporation - Wall Systems (herein after BASF Wall Systems) accepts no liability for the end use of this detail. For conditions not shown, consult BASF Wall Systems for review of specific detail.

BASF
We create chemistry

EXISTING EIFS

SENERGY LAMINA:
SENERGY BASE COAT
SENERGY REINFORCING MESH
SENERGY FINISH COAT



*BY OTHERS

REFERENCE SMaRT EIFS PROCEDURES AND RESURFACING SPECIFICATION FOR FURTHER INFORMATION

TYPICAL AESTHETIC GROOVE SENERGY EIFS RESURFACING SYSTEM

SCALE: NTS

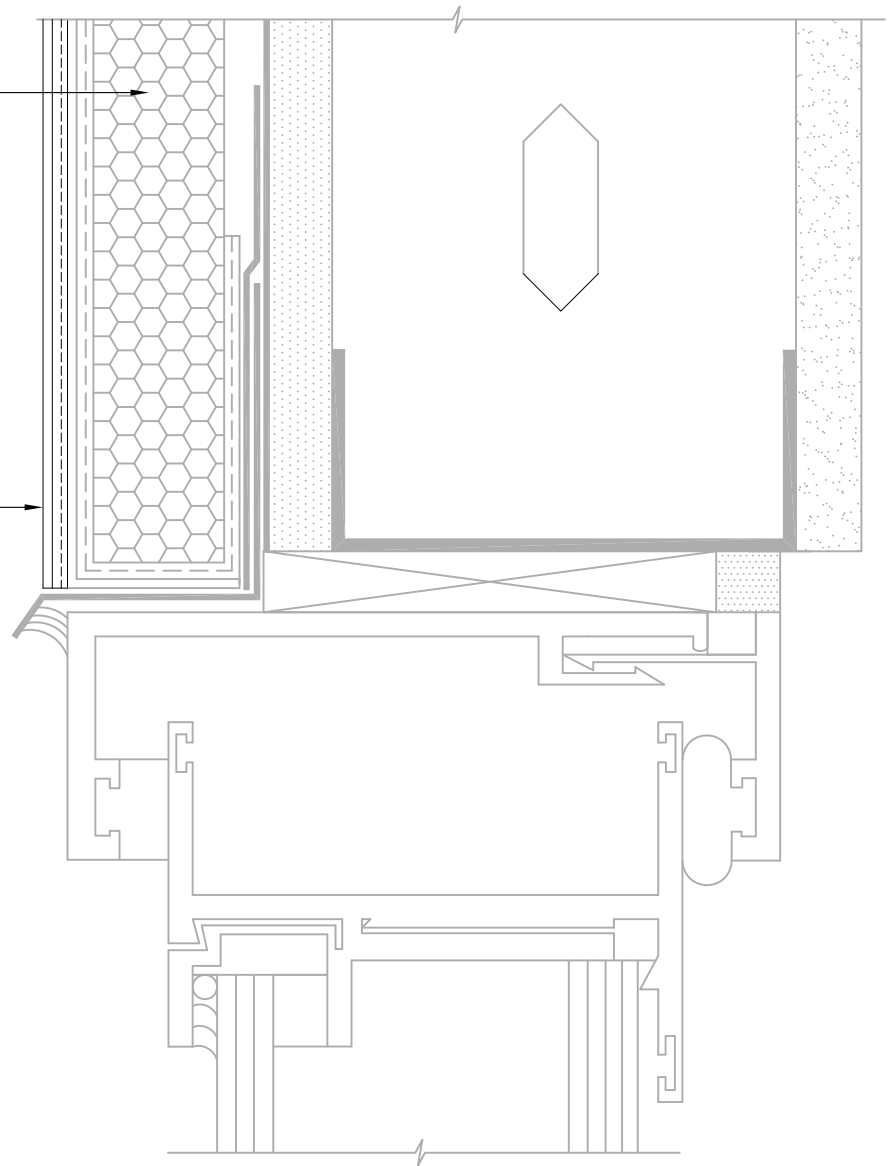
02

Structure, substrates, flashing, and other items which are not part of the BASF SENERGY *EIFS Resurfacing System* are the responsibility of others. This detail is subject to change without notice. BASF Corporation - Wall Systems (herein after BASF Wall Systems) accepts no liability for the end use of this detail. For conditions not shown, consult BASF Wall Systems for review of specific detail.

BASF
We create chemistry

EXISTING EIFS

SENERGY LAMINA:
SENERGY BASE COAT
SENERGY REINFORCING MESH
SENERGY FINISH COAT



*BY OTHERS

REFERENCE SMaRT EIFS PROCEDURES AND RESURFACING SPECIFICATION FOR FURTHER INFORMATION

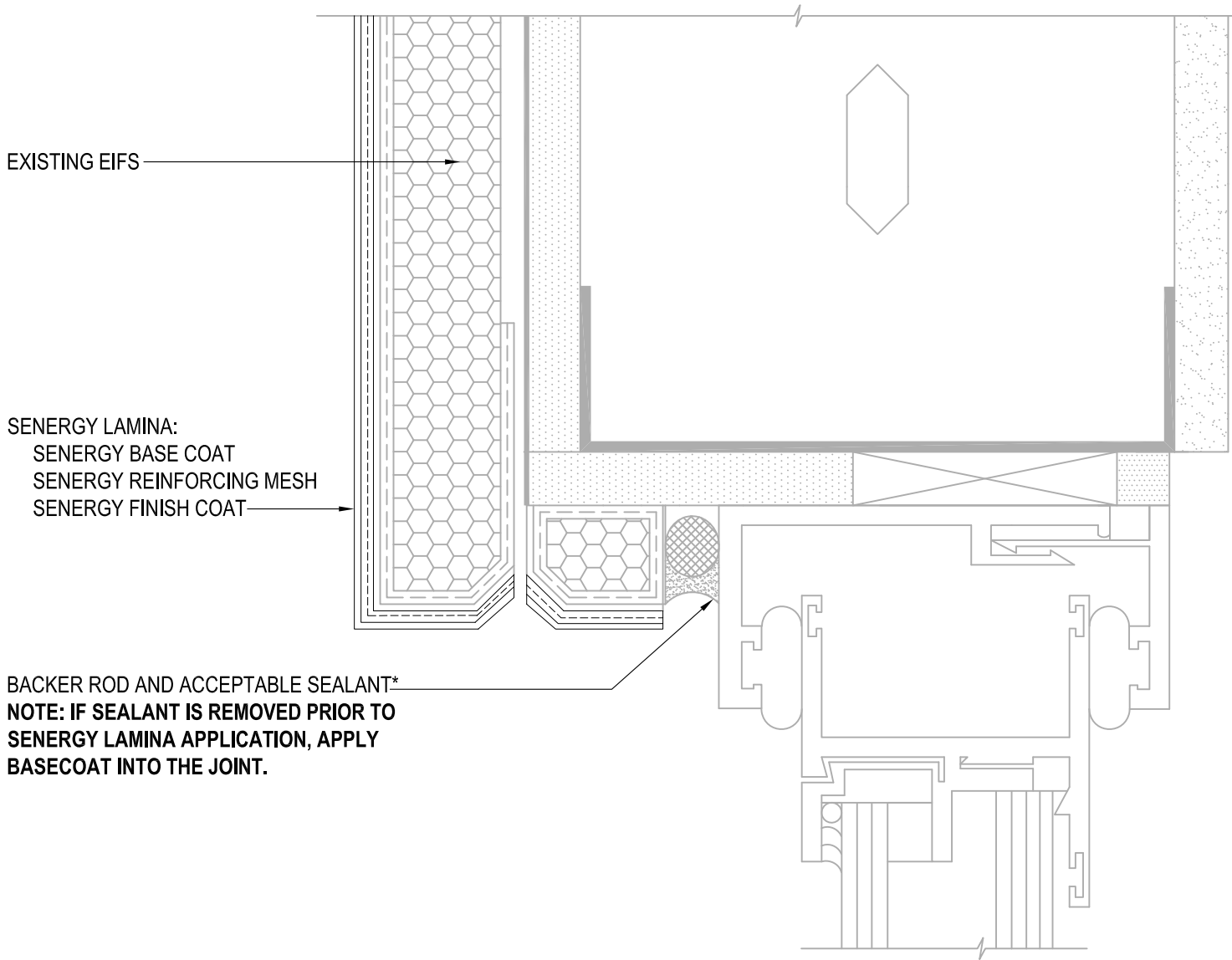
TYPICAL WINDOW HEAD (FLUSH) SENERGY EIFS RESURFACING SYSTEM

SCALE: NTS

03

Structure, substrates, flashing, and other items which are not part of the BASF SENERGY *EIFS Resurfacing System* are the responsibility of others. This detail is subject to change without notice. BASF Corporation - Wall Systems (herein after BASF Wall Systems) accepts no liability for the end use of this detail. For conditions not shown, consult BASF Wall Systems for review of specific detail.

BASF
We create chemistry



EXISTING EIFS

SENERGY LAMINA:
SENERGY BASE COAT
SENERGY REINFORCING MESH
SENERGY FINISH COAT

BACKER ROD AND ACCEPTABLE SEALANT*
NOTE: IF SEALANT IS REMOVED PRIOR TO SENERGY LAMINA APPLICATION, APPLY BASECOAT INTO THE JOINT.

*BY OTHERS

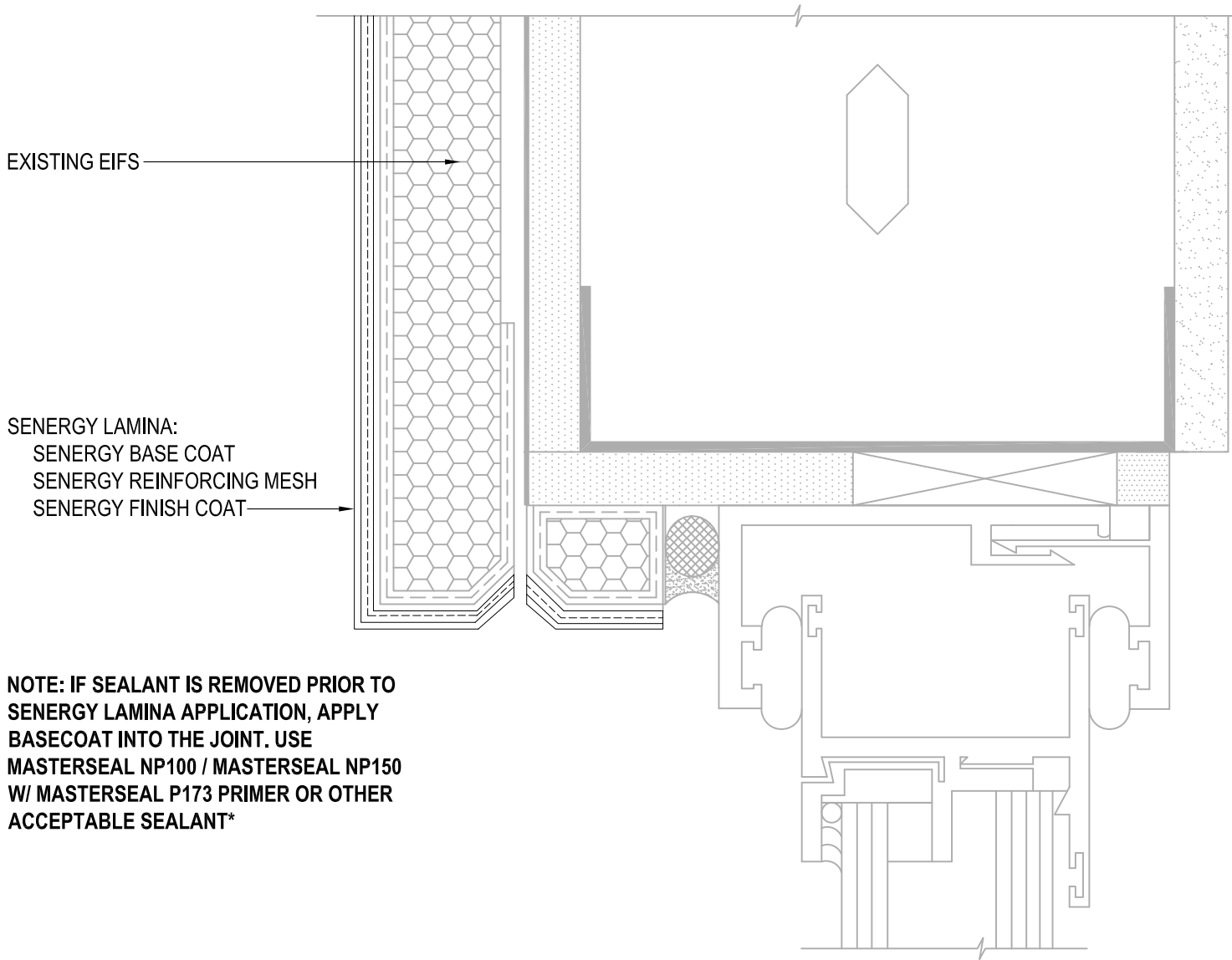
REFERENCE SMaRT EIFS PROCEDURES AND RESURFACING SPECIFICATION FOR FURTHER INFORMATION

TYPICAL WINDOW HEAD (RECESSED) SENERGY EIFS RESURFACING SYSTEM

SCALE: NTS
04

Structure, substrates, flashing, and other items which are not part of the BASF SENERGY *EIFS Resurfacing System* are the responsibility of others. This detail is subject to change without notice. BASF Corporation - Wall Systems (herein after BASF Wall Systems) accepts no liability for the end use of this detail. For conditions not shown, consult BASF Wall Systems for review of specific detail.





*BY OTHERS

REFERENCE SMaRT EIFS PROCEDURES AND RESURFACING SPECIFICATION FOR FURTHER INFORMATION

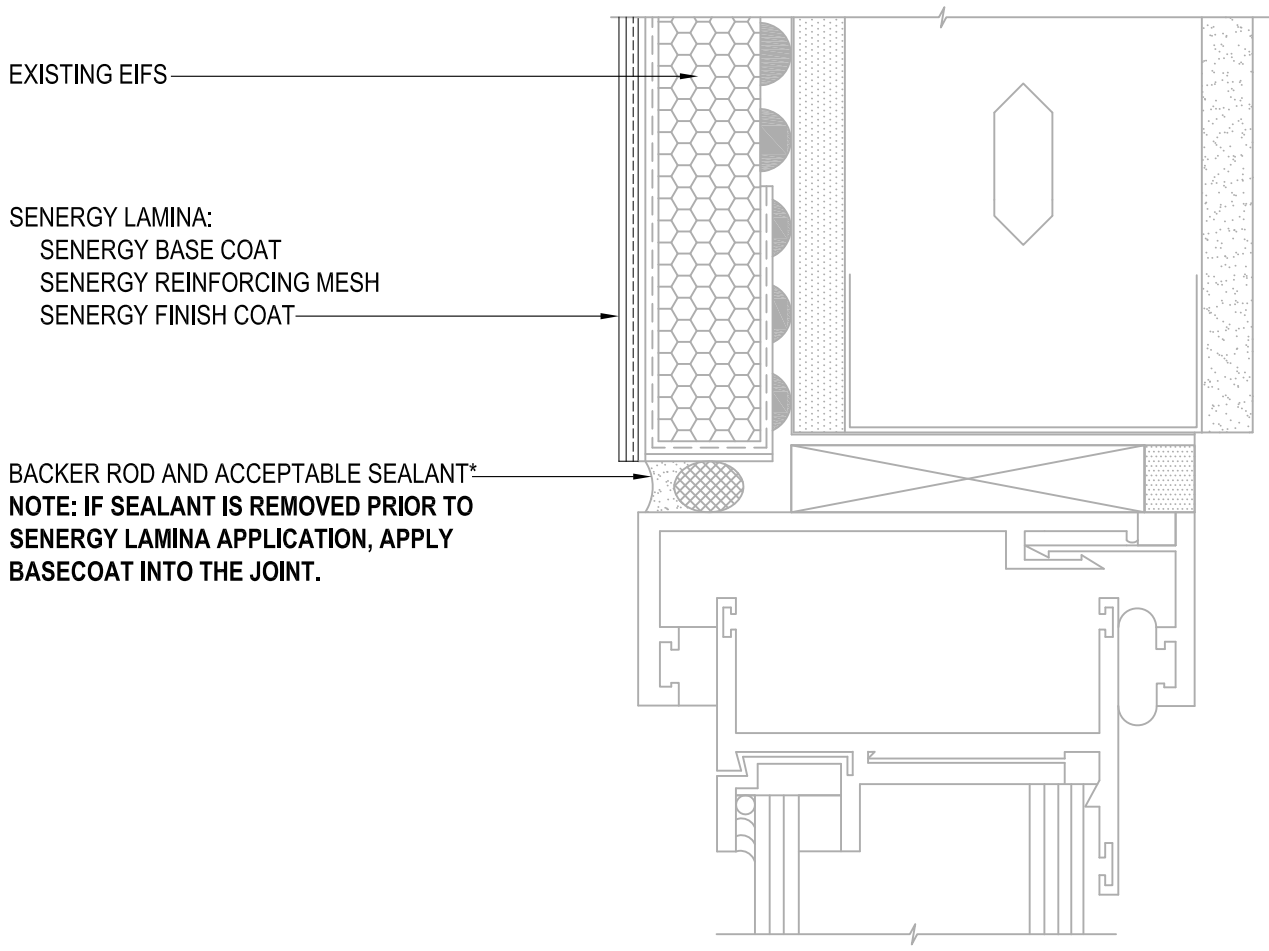
TYPICAL WINDOW HEAD (RECESSED) SENERGY EIFS RESURFACING SYSTEM

SCALE: NTS

04

Structure, substrates, flashing, and other items which are not part of the BASF SENERGY *EIFS Resurfacing System* are the responsibility of others. This detail is subject to change without notice. BASF Corporation - Wall Systems (herein after BASF Wall Systems) accepts no liability for the end use of this detail. For conditions not shown, consult BASF Wall Systems for review of specific detail.

BASF
We create chemistry



EXISTING EIFS

SENERGY LAMINA:
 SENERGY BASE COAT
 SENERGY REINFORCING MESH
 SENERGY FINISH COAT

BACKER ROD AND ACCEPTABLE SEALANT*
 NOTE: IF SEALANT IS REMOVED PRIOR TO
 SENERGY LAMINA APPLICATION, APPLY
 BASECOAT INTO THE JOINT.

*BY OTHERS

REFERENCE SMaRT EIFS PROCEDURES AND RESURFACING SPECIFICATION FOR FURTHER INFORMATION

TYPICAL WINDOW JAMB (FLUSH) SENERGY EIFS RESURFACING SYSTEM

SCALE: NTS
05

Structure, substrates, flashing, and other items which are not part of the BASF SENERGY *EIFS Resurfacing System* are the responsibility of others. This detail is subject to change without notice. BASF Corporation - Wall Systems (herein after BASF Wall Systems) accepts no liability for the end use of this detail. For conditions not shown, consult BASF Wall Systems for review of specific detail.

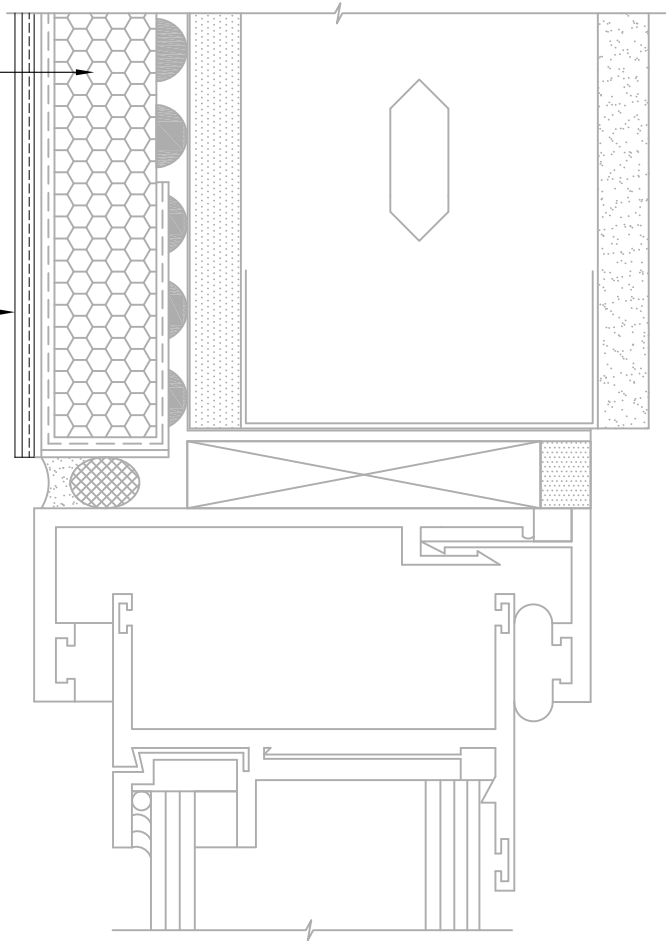


EXISTING EIFS

SENERGY LAMINA:

- SENERGY BASE COAT
- SENERGY REINFORCING MESH
- SENERGY FINISH COAT

NOTE: IF SEALANT IS REMOVED PRIOR TO SENERGY LAMINA APPLICATION, APPLY BASECOAT INTO THE JOINT. USE MASTERSEAL NP100 / MASTERSEAL NP150 W/ MASTERSEAL P173 PRIMER OR OTHER ACCEPTABLE SEALANT*



*BY OTHERS

REFERENCE SMaRT EIFS PROCEDURES AND RESURFACING SPECIFICATION FOR FURTHER INFORMATION

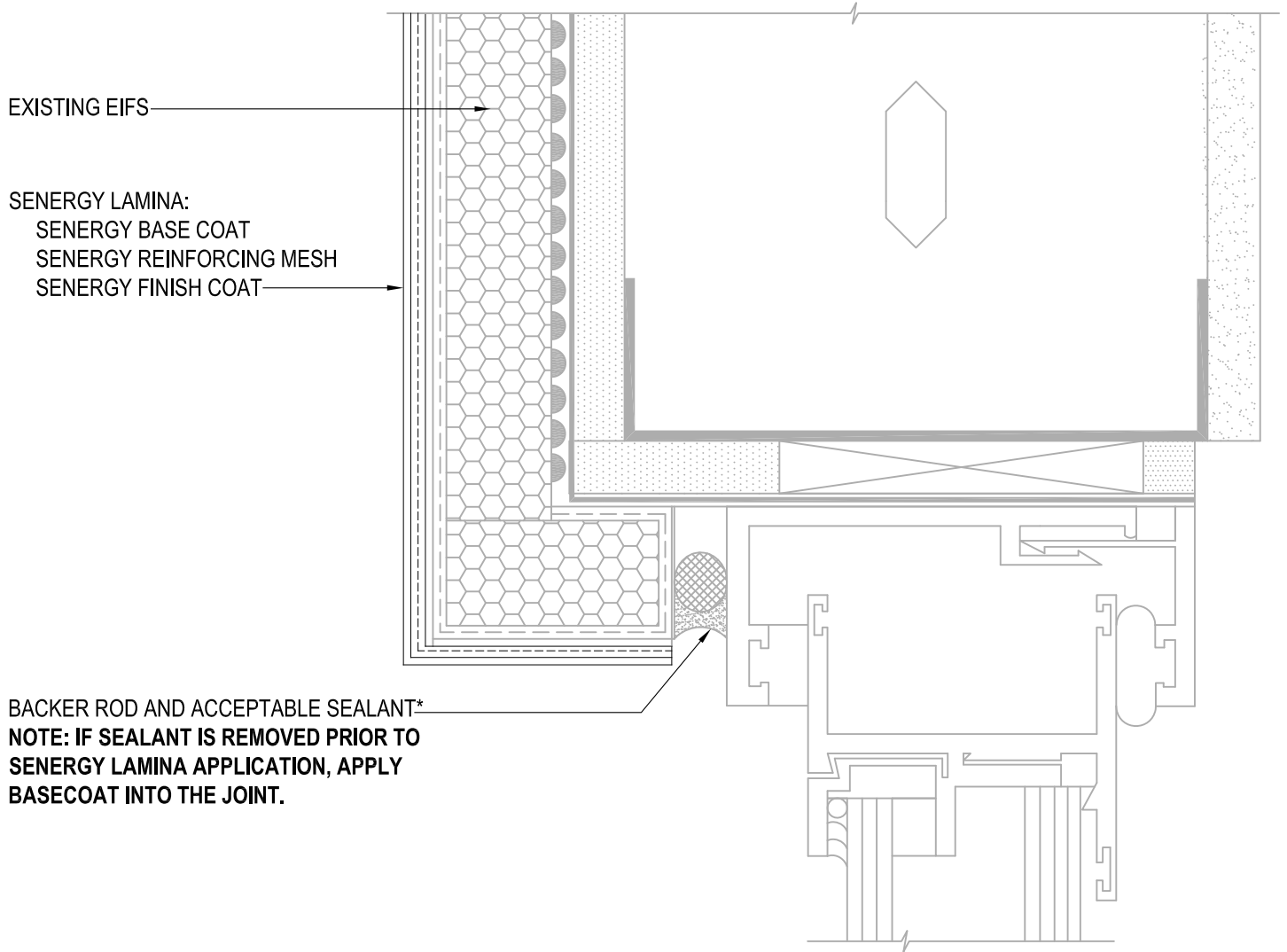
TYPICAL WINDOW JAMB (FLUSH) SENERGY EIFS RESURFACING SYSTEM

SCALE: NTS

05

Structure, substrates, flashing, and other items which are not part of the BASF SENERGY *EIFS Resurfacing System* are the responsibility of others. This detail is subject to change without notice. BASF Corporation - Wall Systems (herein after BASF Wall Systems) accepts no liability for the end use of this detail. For conditions not shown, consult BASF Wall Systems for review of specific detail.

BASF
We create chemistry



EXISTING EIFS

SENERGY LAMINA:
SENERGY BASE COAT
SENERGY REINFORCING MESH
SENERGY FINISH COAT

BACKER ROD AND ACCEPTABLE SEALANT*
**NOTE: IF SEALANT IS REMOVED PRIOR TO
SENERGY LAMINA APPLICATION, APPLY
BASECOAT INTO THE JOINT.**

*BY OTHERS

REFERENCE SMaRT EIFS PROCEDURES AND RESURFACING SPECIFICATION FOR FURTHER INFORMATION

TYPICAL WINDOW JAMB (RECESSED) SENERGY EIFS RESURFACING SYSTEM

SCALE: NTS

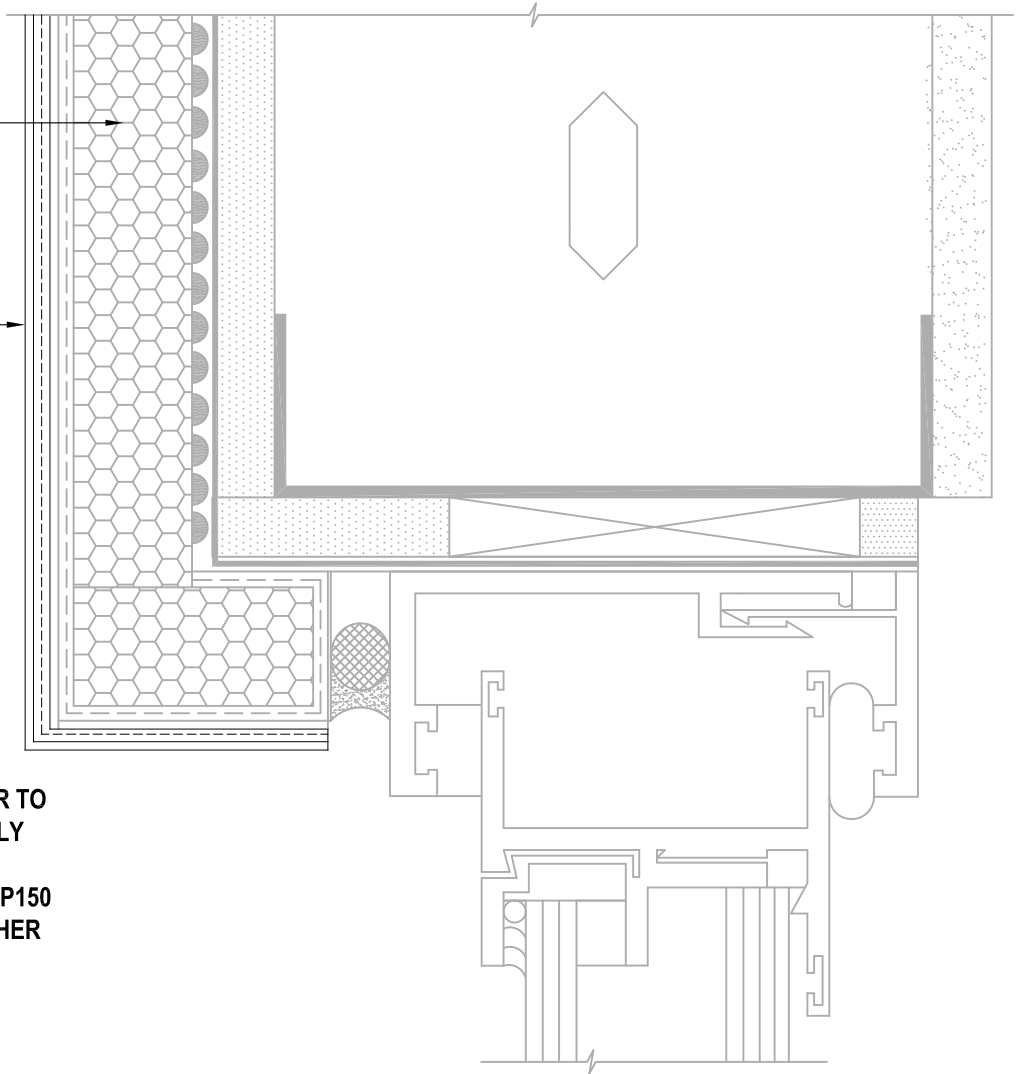
06

Structure, substrates, flashing, and other items which are not part of the BASF SENERGY *EIFS Resurfacing System* are the responsibility of others. This detail is subject to change without notice. BASF Corporation - Wall Systems (herein after BASF Wall Systems) accepts no liability for the end use of this detail. For conditions not shown, consult BASF Wall Systems for review of specific detail.

BASF
We create chemistry

EXISTING EIFS

SENERGY LAMINA:
SENERGY BASE COAT
SENERGY REINFORCING MESH
SENERGY FINISH COAT



NOTE: IF SEALANT IS REMOVED PRIOR TO SENERGY LAMINA APPLICATION, APPLY BASECOAT INTO THE JOINT. USE MASTERSEAL NP100 / MASTERSEAL NP150 W/ MASTERSEAL P173 PRIMER OR OTHER ACCEPTABLE SEALANT*

*BY OTHERS

REFERENCE SMaRT EIFS PROCEDURES AND RESURFACING SPECIFICATION FOR FURTHER INFORMATION

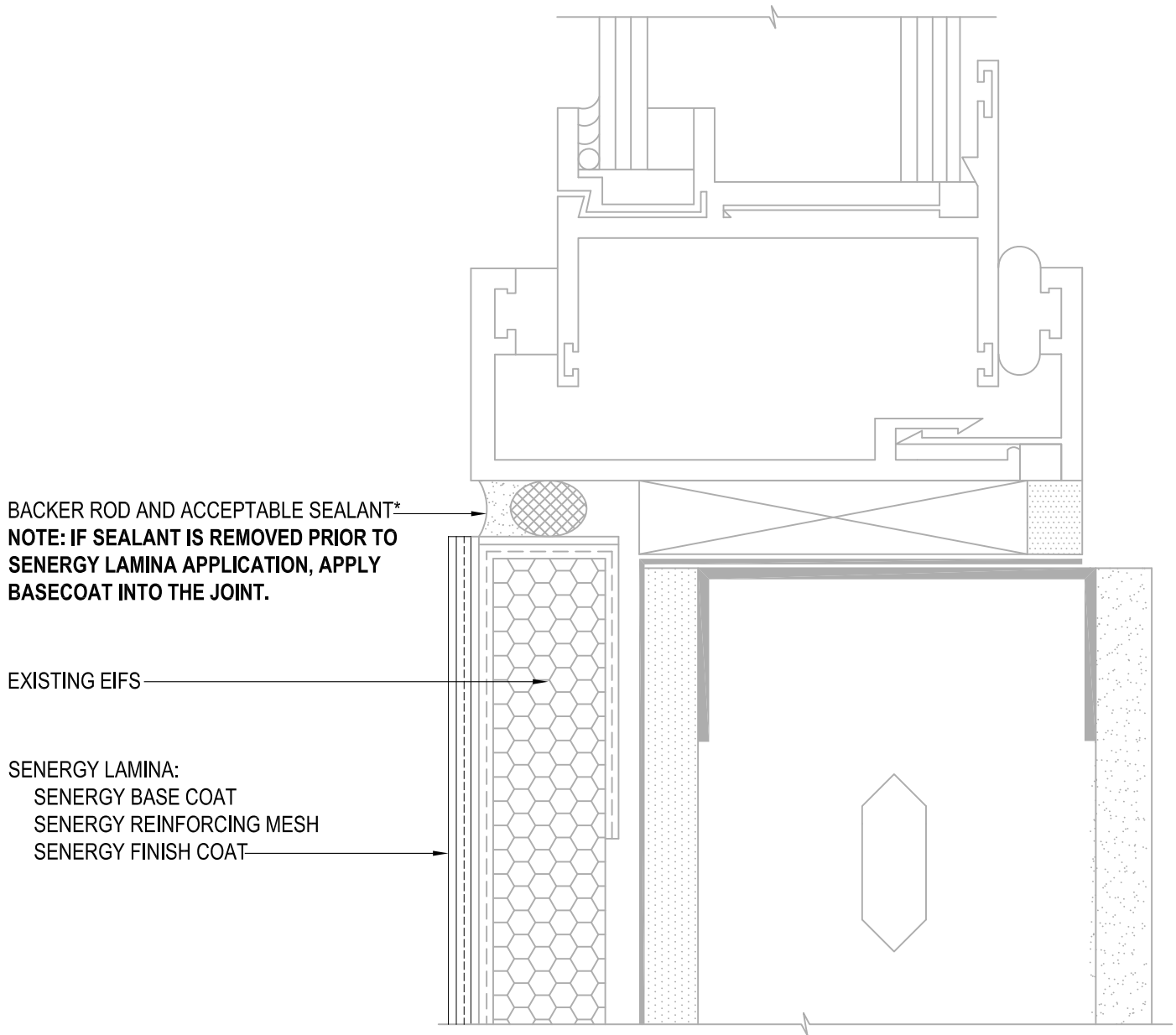
TYPICAL WINDOW JAMB (RECESSED) SENERGY EIFS RESURFACING SYSTEM

SCALE: NTS

06

Structure, substrates, flashing, and other items which are not part of the BASF SENERGY *EIFS Resurfacing System* are the responsibility of others. This detail is subject to change without notice. BASF Corporation - Wall Systems (herein after BASF Wall Systems) accepts no liability for the end use of this detail. For conditions not shown, consult BASF Wall Systems for review of specific detail.

BASF
We create chemistry



*BY OTHERS

REFERENCE SMaRT EIFS PROCEDURES AND RESURFACING SPECIFICATION FOR FURTHER INFORMATION

TYPICAL WINDOW SILL (FLUSH) SENERGY EIFS RESURFACING SYSTEM

SCALE: NTS

07

Structure, substrates, flashing, and other items which are not part of the BASF SENERGY *EIFS Resurfacing System* are the responsibility of others. This detail is subject to change without notice. BASF Corporation - Wall Systems (herein after BASF Wall Systems) accepts no liability for the end use of this detail. For conditions not shown, consult BASF Wall Systems for review of specific detail.

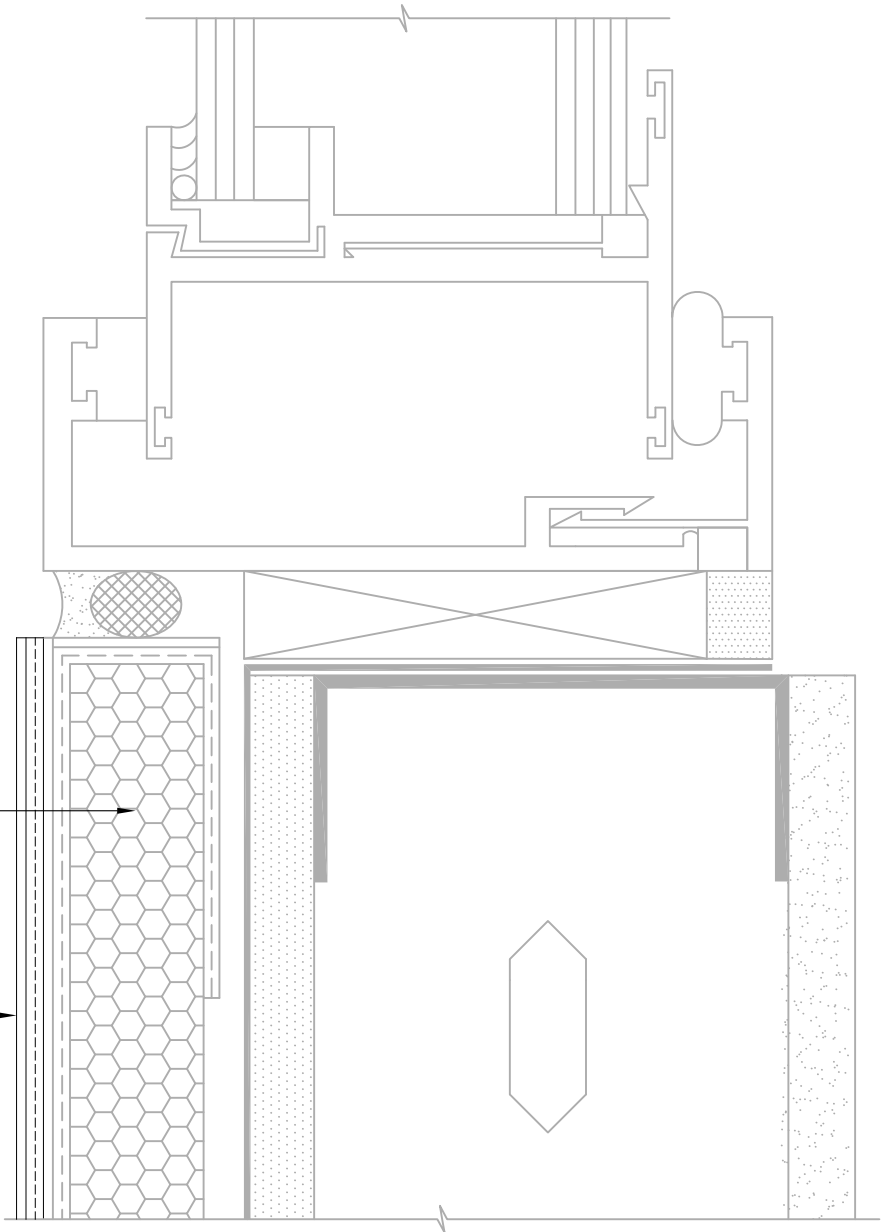
■ BASF

We create chemistry

NOTE: IF SEALANT IS REMOVED PRIOR TO SENERGY LAMINA APPLICATION, APPLY BASECOAT INTO THE JOINT. USE MASTERSEAL NP100 / MASTERSEAL NP150 W/ MASTERSEAL P173 PRIMER OR OTHER ACCEPTABLE SEALANT*

EXISTING EIFS

SENERGY LAMINA:
SENERGY BASE COAT
SENERGY REINFORCING MESH
SENERGY FINISH COAT



*BY OTHERS

REFERENCE SMaRT EIFS PROCEDURES AND RESURFACING SPECIFICATION FOR FURTHER INFORMATION

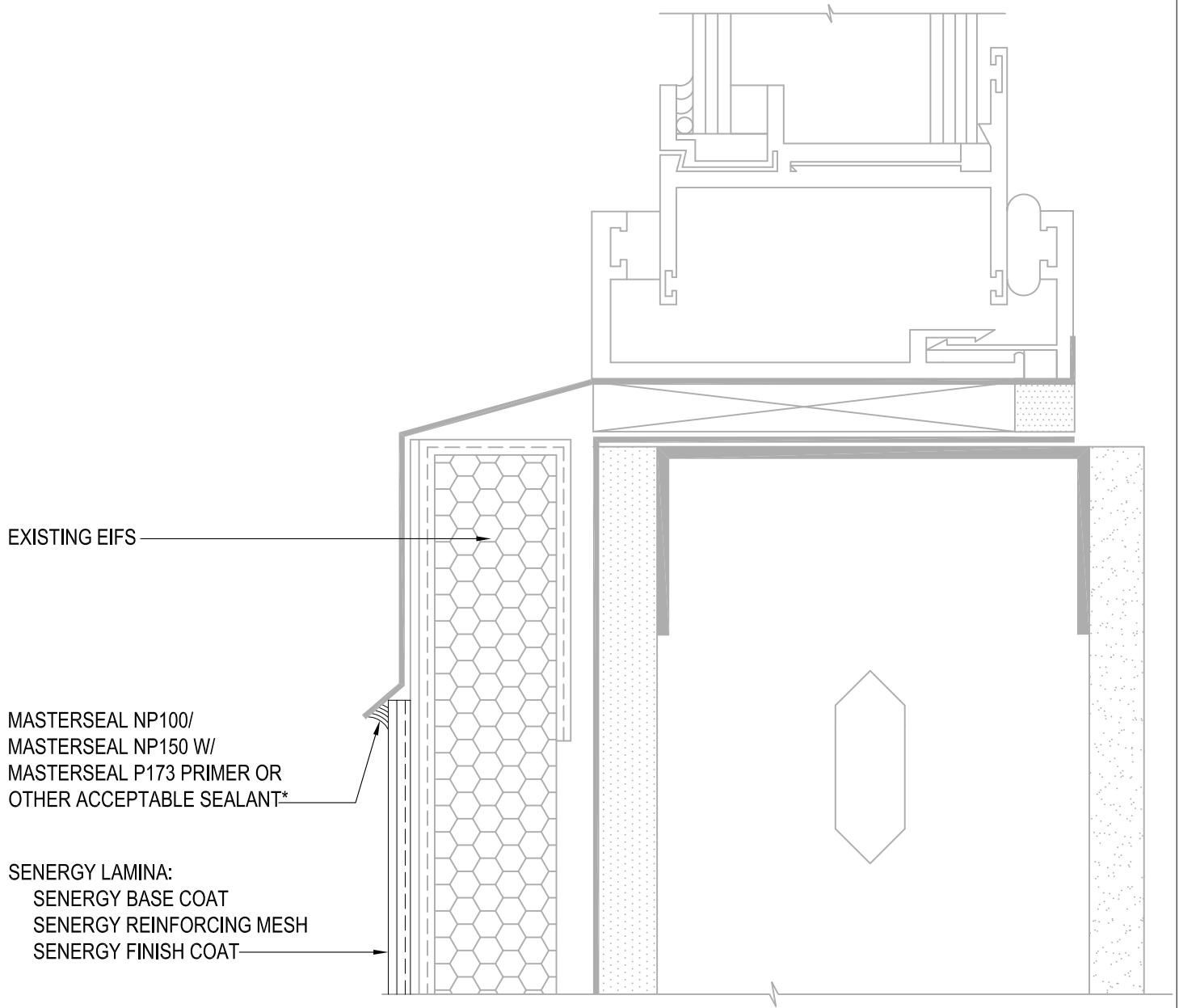
TYPICAL WINDOW SILL (FLUSH) SENERGY EIFS RESURFACING SYSTEM

SCALE: NTS

07

Structure, substrates, flashing, and other items which are not part of the BASF SENERGY *EIFS Resurfacing System* are the responsibility of others. This detail is subject to change without notice. BASF Corporation - Wall Systems (herein after BASF Wall Systems) accepts no liability for the end use of this detail. For conditions not shown, consult BASF Wall Systems for review of specific detail.

BASF
We create chemistry



EXISTING EIFS

MASTERSEAL NP100/
 MASTERSEAL NP150 W/
 MASTERSEAL P173 PRIMER OR
 OTHER ACCEPTABLE SEALANT*

SENERGY LAMINA:
 SENERGY BASE COAT
 SENERGY REINFORCING MESH
 SENERGY FINISH COAT

*BY OTHERS

REFERENCE SMaRT EIFS PROCEDURES AND RESURFACING SPECIFICATION FOR FURTHER INFORMATION

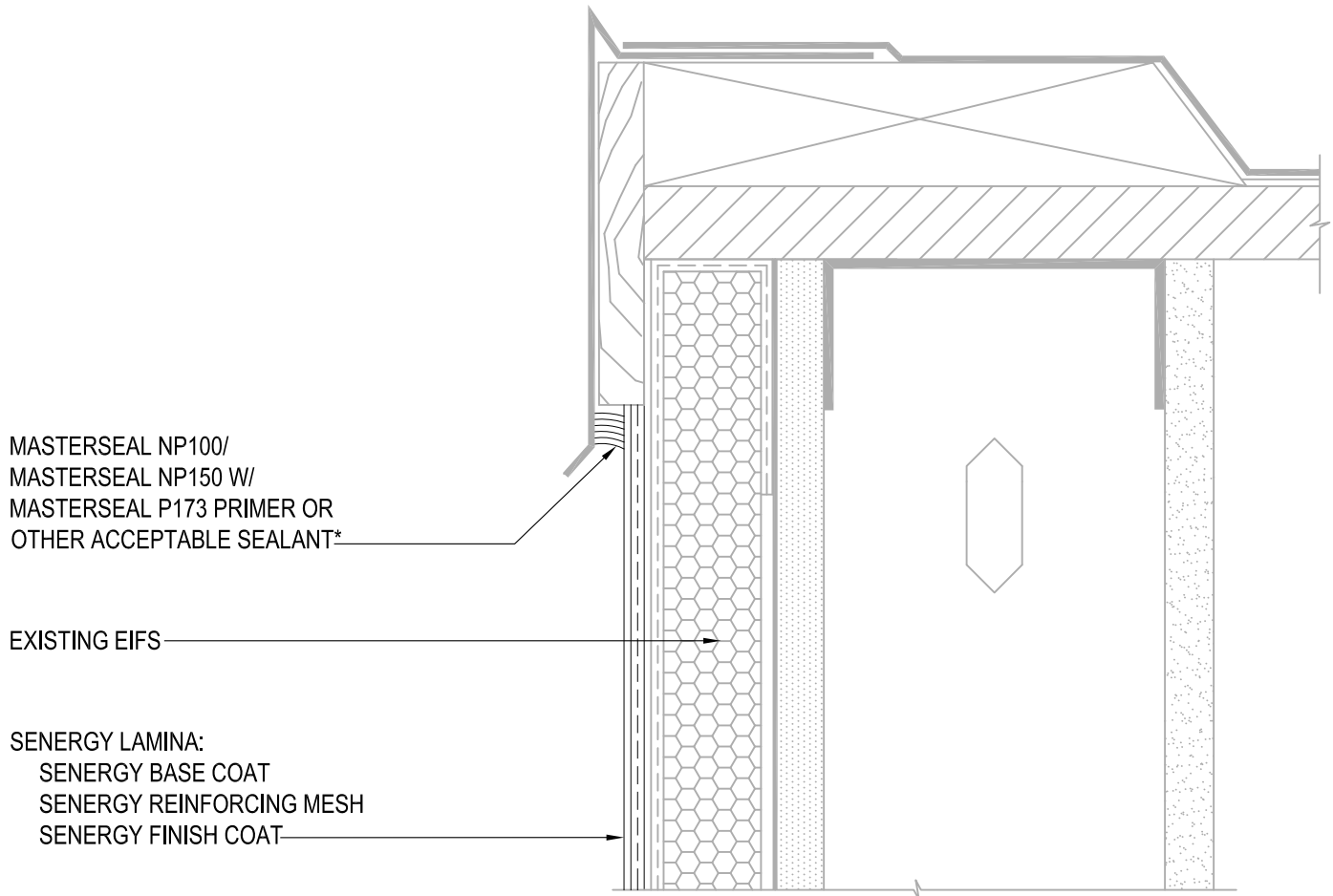
TYPICAL WINDOW SILL (RECESSED) SENERGY EIFS RESURFACING SYSTEM

SCALE: NTS

08

Structure, substrates, flashing, and other items which are not part of the BASF SENERGY EIFS Resurfacing System are the responsibility of others. This detail is subject to change without notice. BASF Corporation - Wall Systems (herein after BASF Wall Systems) accepts no liability for the end use of this detail. For conditions not shown, consult BASF Wall Systems for review of specific detail.

BASF
 We create chemistry



*BY OTHERS

REFERENCE SMaRT EIFS PROCEDURES AND RESURFACING SPECIFICATION FOR FURTHER INFORMATION

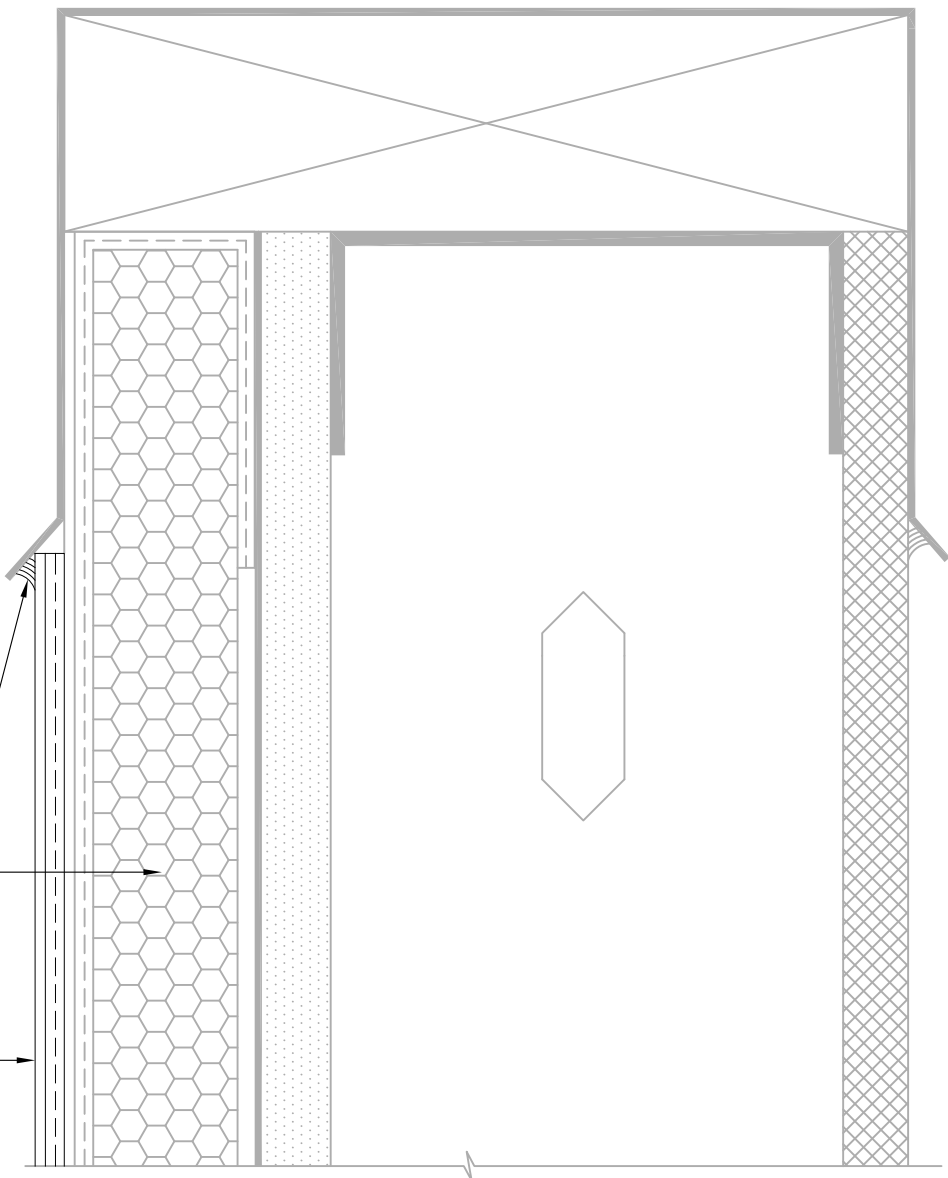
TYPICAL ROOF EDGE FLASHING SENERGY EIFS RESURFACING SYSTEM

SCALE: NTS

09

Structure, substrates, flashing, and other items which are not part of the BASF SENERGY *EIFS Resurfacing System* are the responsibility of others. This detail is subject to change without notice. BASF Corporation - Wall Systems (herein after BASF Wall Systems) accepts no liability for the end use of this detail. For conditions not shown, consult BASF Wall Systems for review of specific detail.

BASF
 We create chemistry



MASTERSEAL NP100/
 MASTERSEAL NP150 W/
 MASTERSEAL P173 PRIMER OR
 OTHER ACCEPTABLE SEALANT*

EXISTING EIFS

SENERGY LAMINA:
 SENERGY BASE COAT
 SENERGY REINFORCING MESH
 SENERGY FINISH COAT

*BY OTHERS

REFERENCE SMaRT EIFS PROCEDURES AND RESURFACING SPECIFICATION FOR FURTHER INFORMATION

TYPICAL METAL COPING

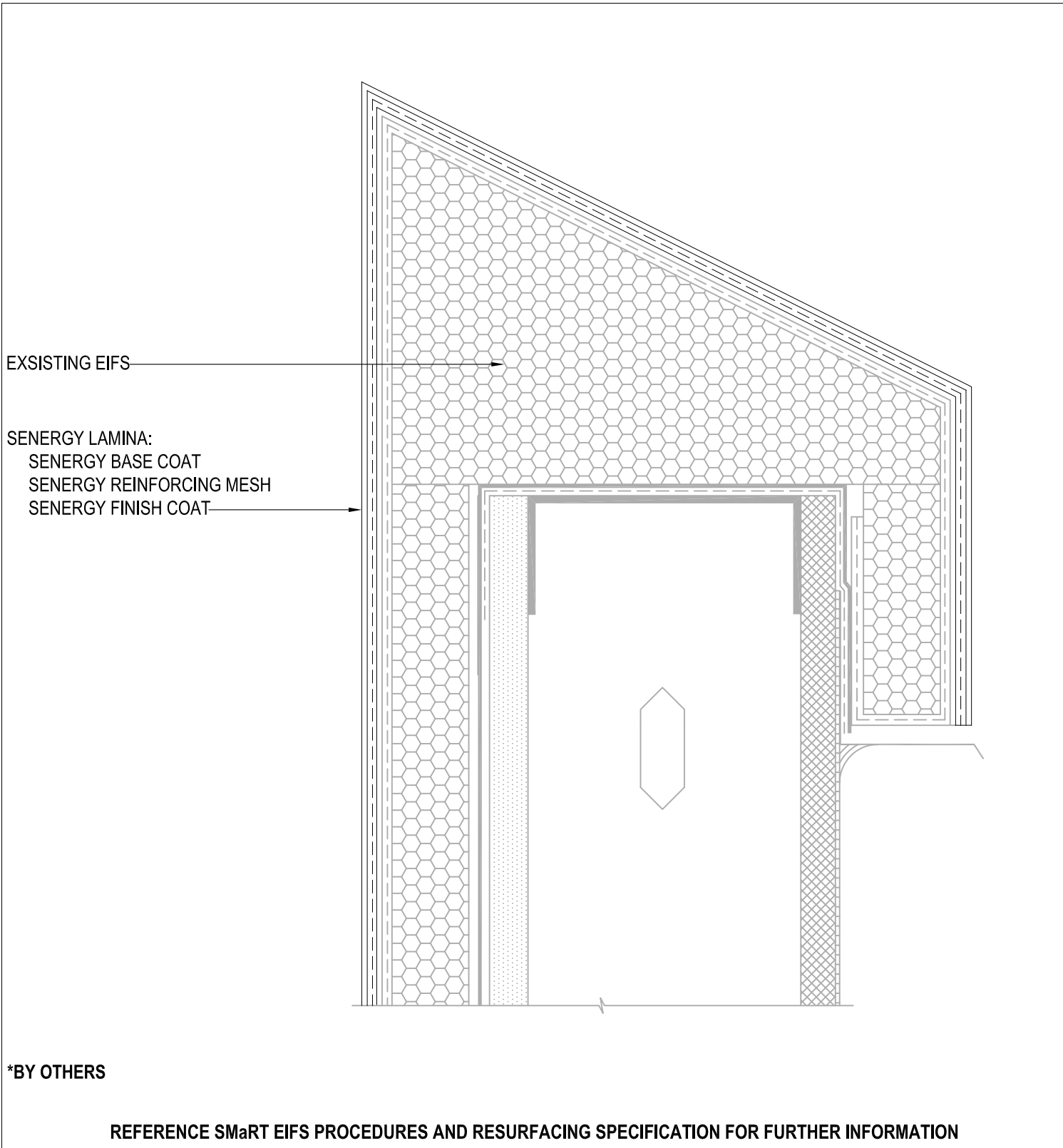
SENERGY EIFS RESURFACING SYSTEM

SCALE: NTS

10

Structure, substrates, flashing, and other items which are not part of the BASF SENERGY *EIFS Resurfacing System* are the responsibility of others. This detail is subject to change without notice. BASF Corporation - Wall Systems (herein after BASF Wall Systems) accepts no liability for the end use of this detail. For conditions not shown, consult BASF Wall Systems for review of specific detail.

BASF
 We create chemistry



TYPICAL PARAPET CAP

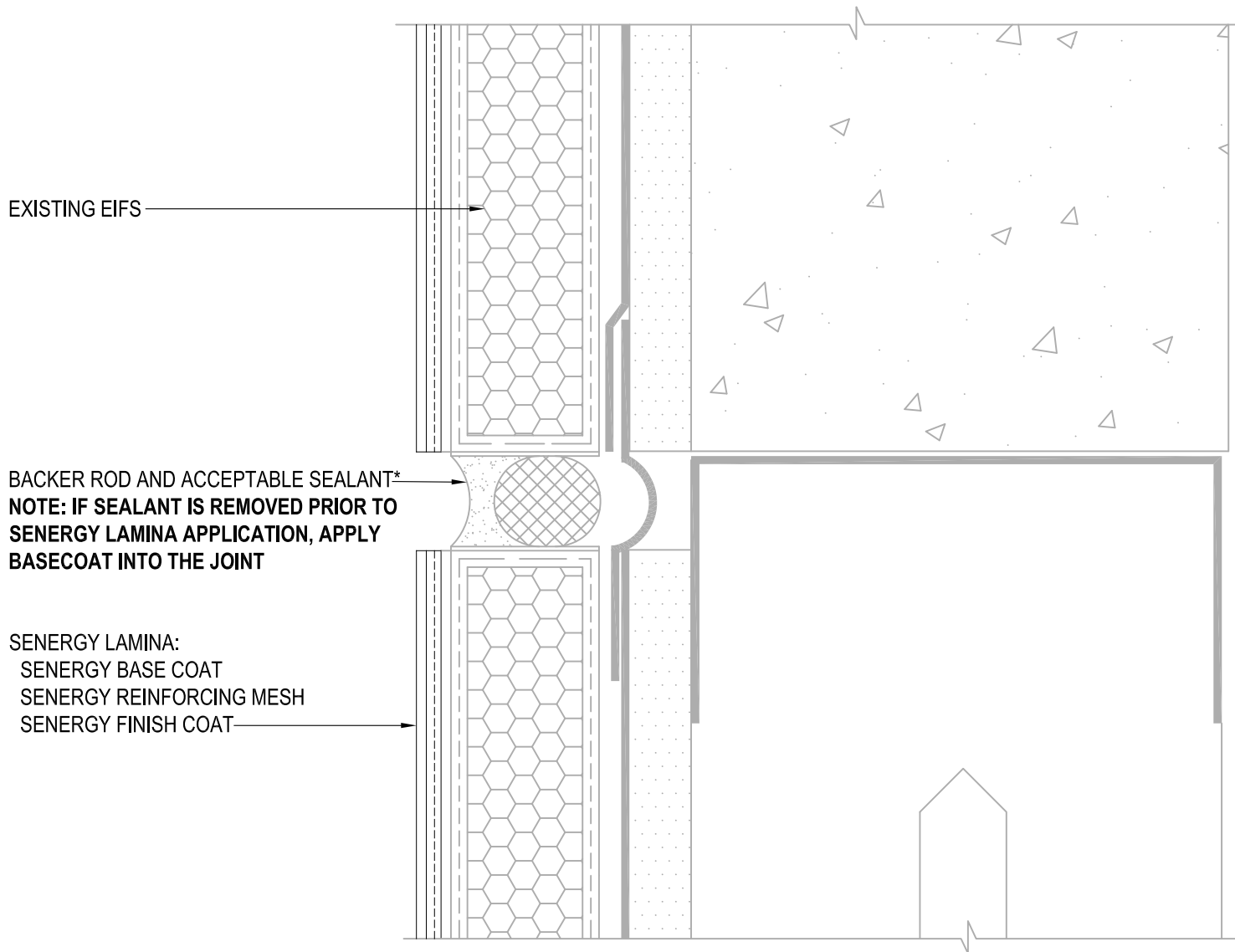
SENERGY EIFS RESURFACING SYSTEM

SCALE: NTS

11

Structure, substrates, flashing, and other items which are not part of the BASF SENERGY *EIFS Resurfacing System* are the responsibility of others. This detail is subject to change without notice. BASF Corporation - Wall Systems (herein after BASF Wall Systems) accepts no liability for the end use of this detail. For conditions not shown, consult BASF Wall Systems for review of specific detail.

BASF
We create chemistry



EXISTING EIFS

BACKER ROD AND ACCEPTABLE SEALANT*
NOTE: IF SEALANT IS REMOVED PRIOR TO SENERGY LAMINA APPLICATION, APPLY BASECOAT INTO THE JOINT

SENERGY LAMINA:
 SENERGY BASE COAT
 SENERGY REINFORCING MESH
 SENERGY FINISH COAT

*BY OTHERS

REFERENCE SMaRT EIFS PROCEDURES AND RESURFACING SPECIFICATION FOR FURTHER INFORMATION

TYPICAL EXPANSION JOINT AT FLOORLINE SENERGY EIFS RESURFACING SYSTEM

SCALE: NTS

12

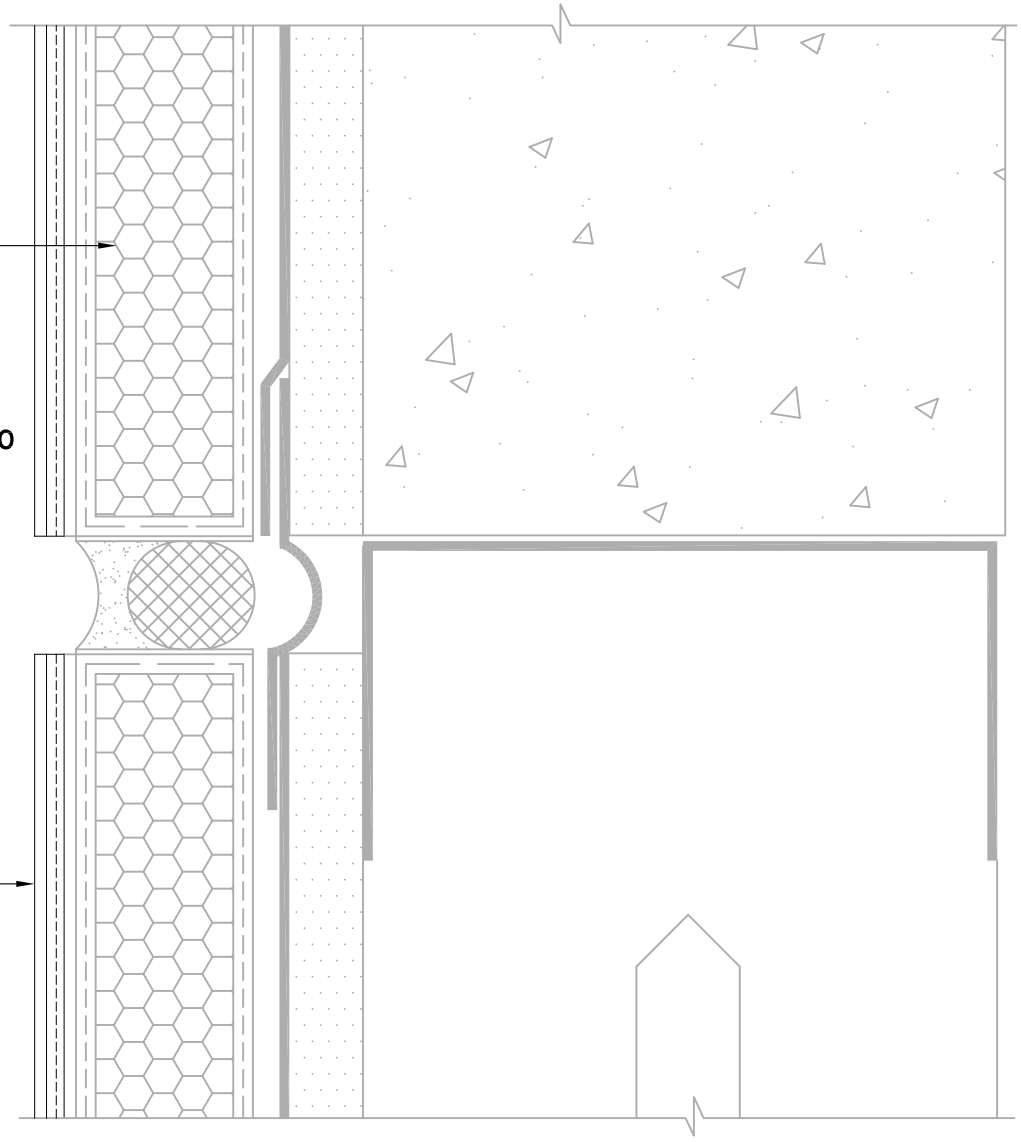
Structure, substrates, flashing, and other items which are not part of the BASF SENERGY *EIFS Resurfacing System* are the responsibility of others. This detail is subject to change without notice. BASF Corporation - Wall Systems (herein after BASF Wall Systems) accepts no liability for the end use of this detail. For conditions not shown, consult BASF Wall Systems for review of specific detail.

BASF
 We create chemistry

EXISTING EIFS

NOTE: IF SEALANT IS REMOVED PRIOR TO SENERGY LAMINA APPLICATION, APPLY BASECOAT INTO THE JOINT. USE MASTERSEAL NP100 / MASTERSEAL NP150 W/ MASTERSEAL P173 PRIMER OR OTHER ACCEPTABLE SEALANT*

SENERGY LAMINA:
SENERGY BASE COAT
SENERGY REINFORCING MESH
SENERGY FINISH COAT



*BY OTHERS

REFERENCE SMaRT EIFS PROCEDURES AND RESURFACING SPECIFICATION FOR FURTHER INFORMATION

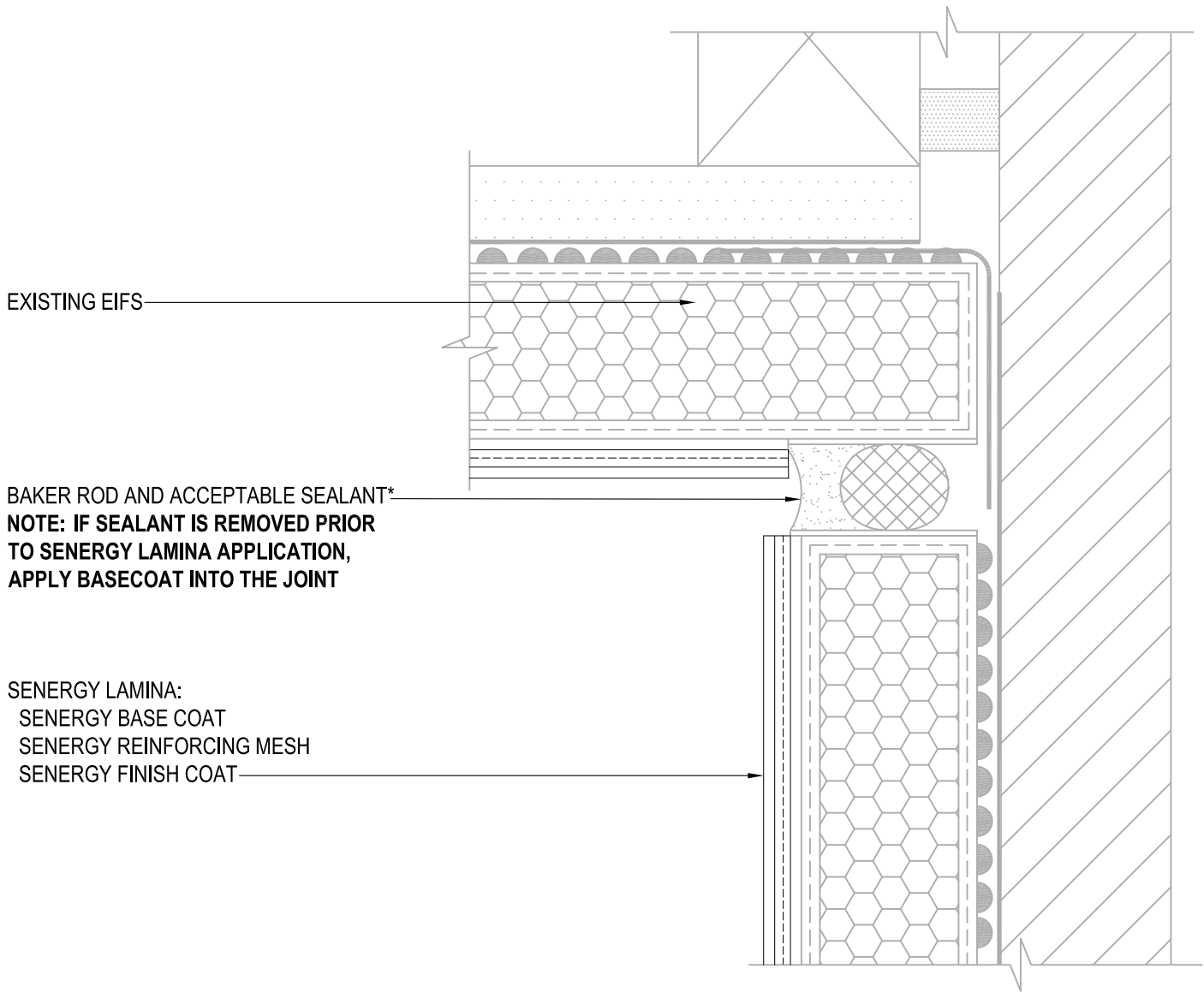
TYPICAL EXPANSION JOINT AT FLOORLINE SENERGY EIFS RESURFACING SYSTEM

SCALE: NTS

12

Structure, substrates, flashing, and other items which are not part of the BASF SENERGY EIFS Resurfacing System are the responsibility of others. This detail is subject to change without notice. BASF Corporation - Wall Systems (herein after BASF Wall Systems) accepts no liability for the end use of this detail. For conditions not shown, consult BASF Wall Systems for review of specific detail.





EXISTING EIFS

BAKER ROD AND ACCEPTABLE SEALANT*

NOTE: IF SEALANT IS REMOVED PRIOR TO SENERGY LAMINA APPLICATION, APPLY BASECOAT INTO THE JOINT

SENERGY LAMINA:
SENERGY BASE COAT
SENERGY REINFORCING MESH
SENERGY FINISH COAT

*BY OTHERS

REFERENCE SMaRT EIFS PROCEDURES AND RESURFACING SPECIFICATION FOR FURTHER INFORMATION

TYPICAL EXPANSION JOINT AT CHANGE IN SUBSTRATE SENERGY EIFS RESURFACING SYSTEM

SCALE: NTS

13

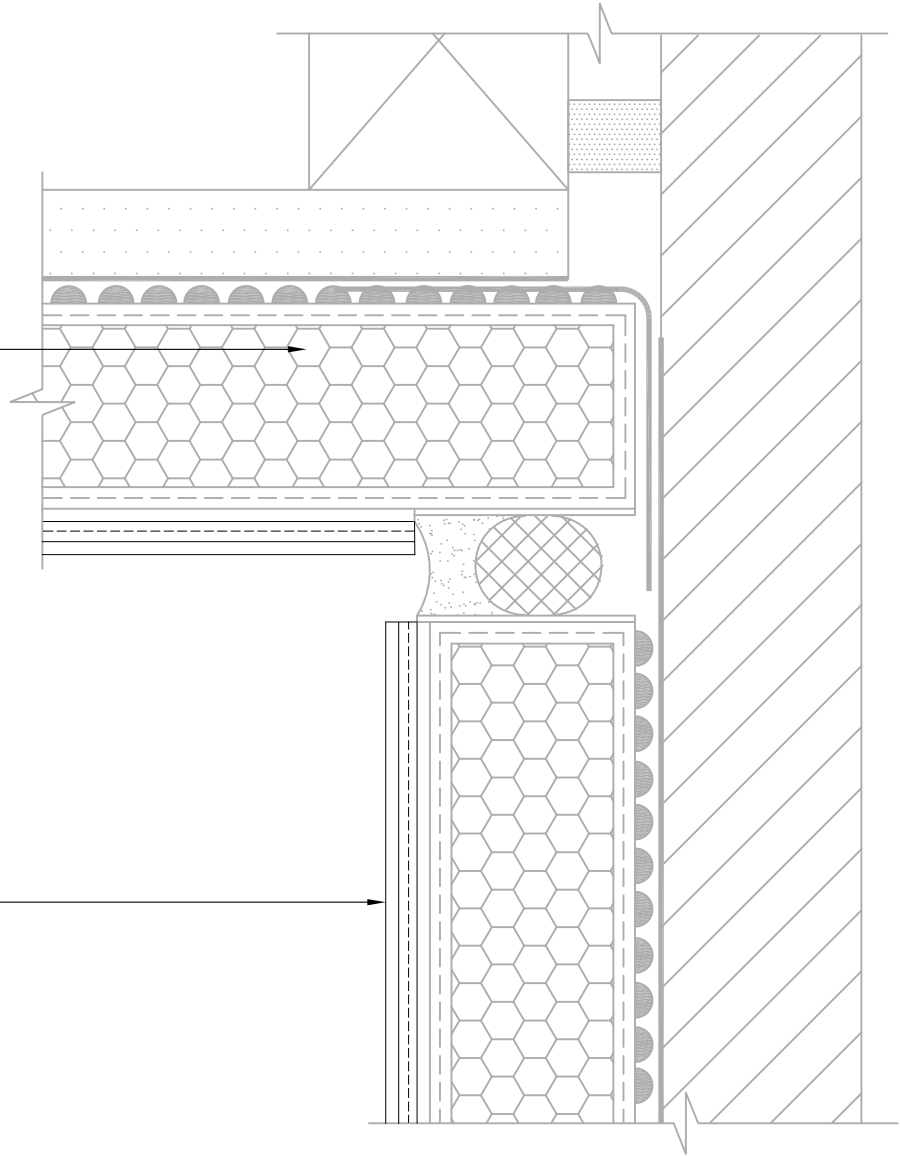
Structure, substrates, flashing, and other items which are not part of the BASF SENERGY *EIFS Resurfacing System* are the responsibility of others. This detail is subject to change without notice. BASF Corporation - Wall Systems (herein after BASF Wall Systems) accepts no liability for the end use of this detail. For conditions not shown, consult BASF Wall Systems for review of specific detail.

BASF
We create chemistry

EXISTING EIFS

NOTE: IF SEALANT IS REMOVED PRIOR TO SENERGY LAMINA APPLICATION, APPLY BASECOAT INTO THE JOINT. USE MASTERSEAL NP100 / MASTERSEAL NP150 W/ MASTERSEAL P173 PRIMER OR OTHER ACCEPTABLE SEALANT*

SENERGY LAMINA:
SENERGY BASE COAT
SENERGY REINFORCING MESH
SENERGY FINISH COAT



*BY OTHERS

REFERENCE SMaRT EIFS PROCEDURES AND RESURFACING SPECIFICATION FOR FURTHER INFORMATION

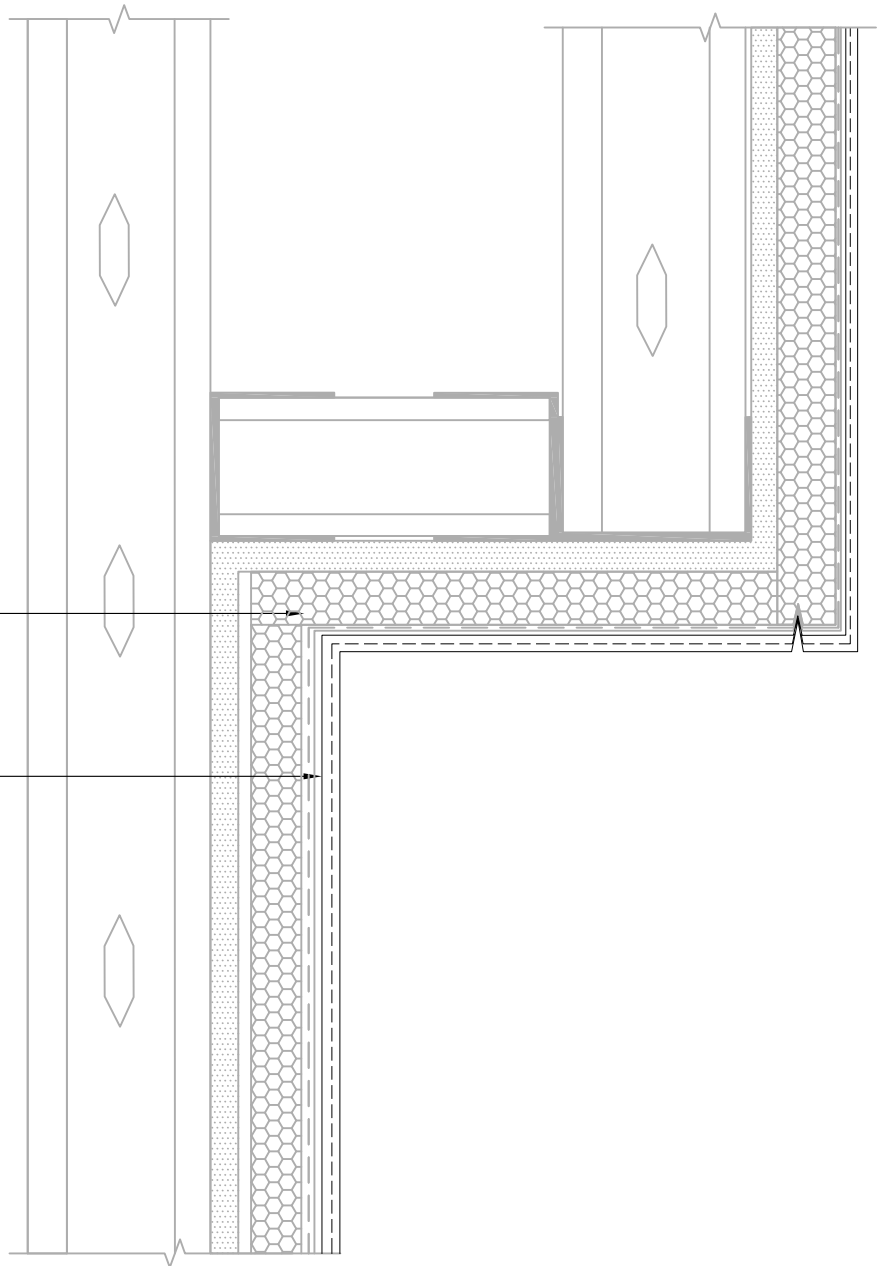
TYPICAL EXPANSION JOINT AT CHANGE IN SUBSTRATE SENERGY EIFS RESURFACING SYSTEM

SCALE: NTS

13

Structure, substrates, flashing, and other items which are not part of the BASF SENERGY *EIFS Resurfacing System* are the responsibility of others. This detail is subject to change without notice. BASF Corporation - Wall Systems (herein after BASF Wall Systems) accepts no liability for the end use of this detail. For conditions not shown, consult BASF Wall Systems for review of specific detail.

BASF
We create chemistry



EXISTING EIFS

SENERGY LAMINA:
 SENERGY BASE COAT
 SENERGY REINFORCING MESH
 SENERGY FINISH COAT

*BY OTHERS

REFERENCE SMaRT EIFS PROCEDURES AND RESURFACING SPECIFICATION FOR FURTHER INFORMATION

TYPICAL TRANSITION AT SOFFIT AND FASCIA SENERGY EIFS RESURFACING SYSTEM

SCALE: NTS

14

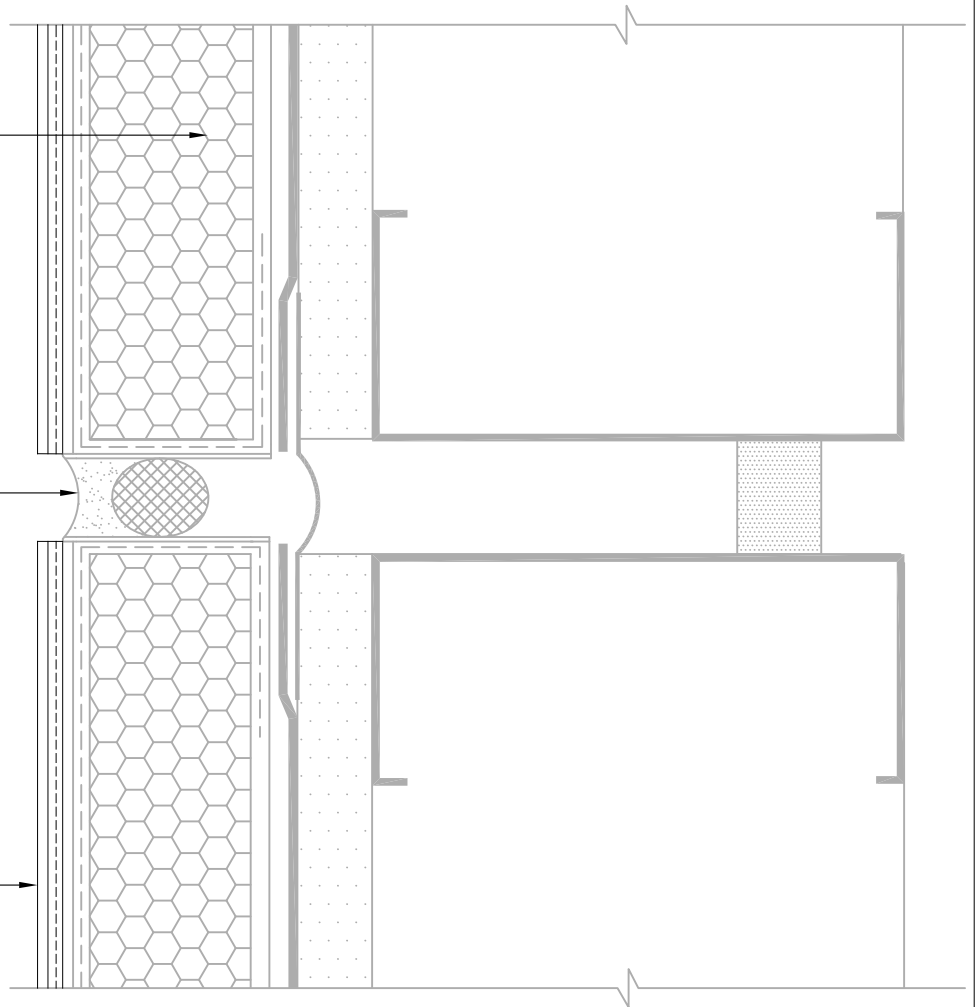
Structure, substrates, flashing, and other items which are not part of the BASF SENERGY *EIFS Resurfacing System* are the responsibility of others. This detail is subject to change without notice. BASF Corporation - Wall Systems (herein after BASF Wall Systems) accepts no liability for the end use of this detail. For conditions not shown, consult BASF Wall Systems for review of specific detail.

BASF
 We create chemistry

EXISTING EIFS

BACKER ROD AND ACCEPTABLE SEALANT *
**NOTE: IF SEALANT IS REMOVED PRIOR TO
SENERGY LAMINA APPLICATION, APPLY
BASECOAT INTO THE JOINT**

SENERGY LAMINA:
SENERGY BASE COAT
SENERGY REINFORCING MESH
SENERGY FINISH COAT



*BY OTHERS

REFERENCE SMaRT EIFS PROCEDURES AND RESURFACING SPECIFICATION FOR FURTHER INFORMATION

TYPICAL VERTICAL EXPANSION JOINT SENERGY EIFS RESURFACING SYSTEM

SCALE: NTS

15

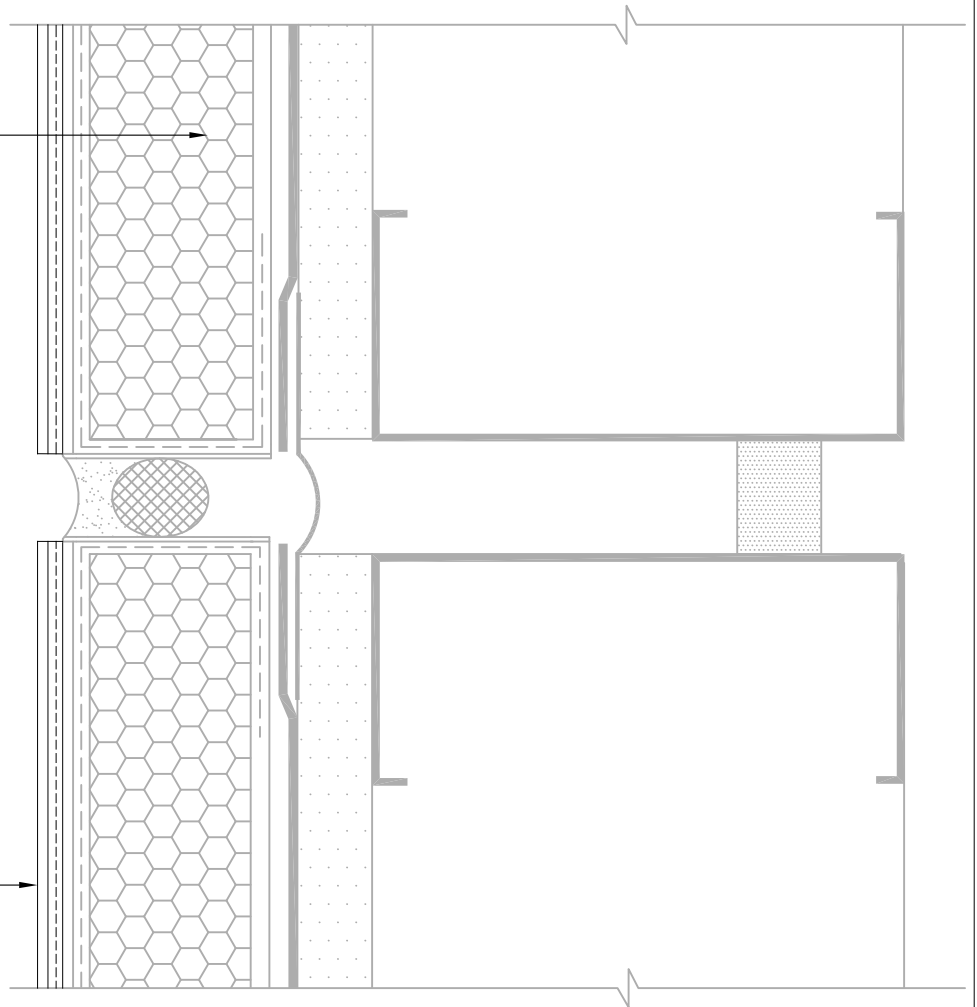
Structure, substrates, flashing, and other items which are not part of the BASF SENERGY *EIFS Resurfacing System* are the responsibility of others. This detail is subject to change without notice. BASF Corporation - Wall Systems (herein after BASF Wall Systems) accepts no liability for the end use of this detail. For conditions not shown, consult BASF Wall Systems for review of specific detail.

BASF
We create chemistry

EXISTING EIFS

NOTE: IF SEALANT IS REMOVED PRIOR TO SENERGY LAMINA APPLICATION, APPLY BASECOAT INTO THE JOINT. USE MASTERSEAL NP100 / MASTERSEAL NP150 W/ MASTERSEAL P173 PRIMER OR OTHER ACCEPTABLE SEALANT*

SENERGY LAMINA:
SENERGY BASE COAT
SENERGY REINFORCING MESH
SENERGY FINISH COAT



*BY OTHERS

REFERENCE SMaRT EIFS PROCEDURES AND RESURFACING SPECIFICATION FOR FURTHER INFORMATION

TYPICAL VERTICAL EXPANSION JOINT SENERGY EIFS RESURFACING SYSTEM

SCALE: NTS

15

Structure, substrates, flashing, and other items which are not part of the BASF SENERGY *EIFS Resurfacing System* are the responsibility of others. This detail is subject to change without notice. BASF Corporation - Wall Systems (herein after BASF Wall Systems) accepts no liability for the end use of this detail. For conditions not shown, consult BASF Wall Systems for review of specific detail.

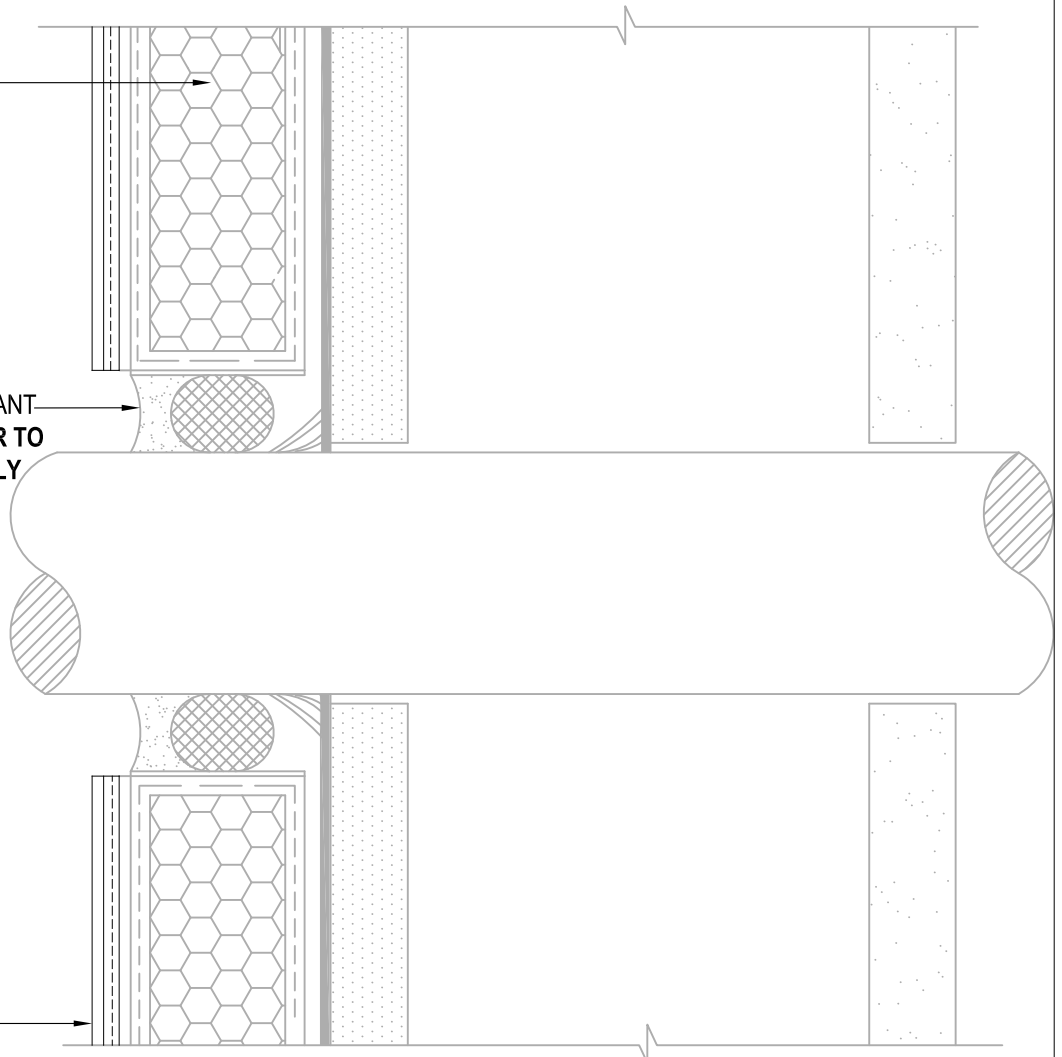

We create chemistry

EXISTING EIFS

BACKER ROD AND ACCEPTABLE SEALANT
NOTE: IF SEALANT IS REMOVED PRIOR TO
SENERGY LAMINA APPLICATION, APPLY
BASECOAT INTO THE JOINT

SENERGY LAMINA:
SENERGY BASE COAT
SENERGY REINFORCING MESH
SENERGY FINISH COAT

*BY OTHERS



REFERENCE SMaRT EIFS PROCEDURES AND RESURFACING SPECIFICATION FOR FURTHER INFORMATION

TYPICAL PIPE PENETRATION SENERGY EIFS RESURFACING SYSTEM

SCALE: NTS

16

Structure, substrates, flashing, and other items which are not part of the BASF SENERGY *EIFS Resurfacing System* are the responsibility of others. This detail is subject to change without notice. BASF Corporation - Wall Systems (herein after BASF Wall Systems) accepts no liability for the end use of this detail. For conditions not shown, consult BASF Wall Systems for review of specific detail.

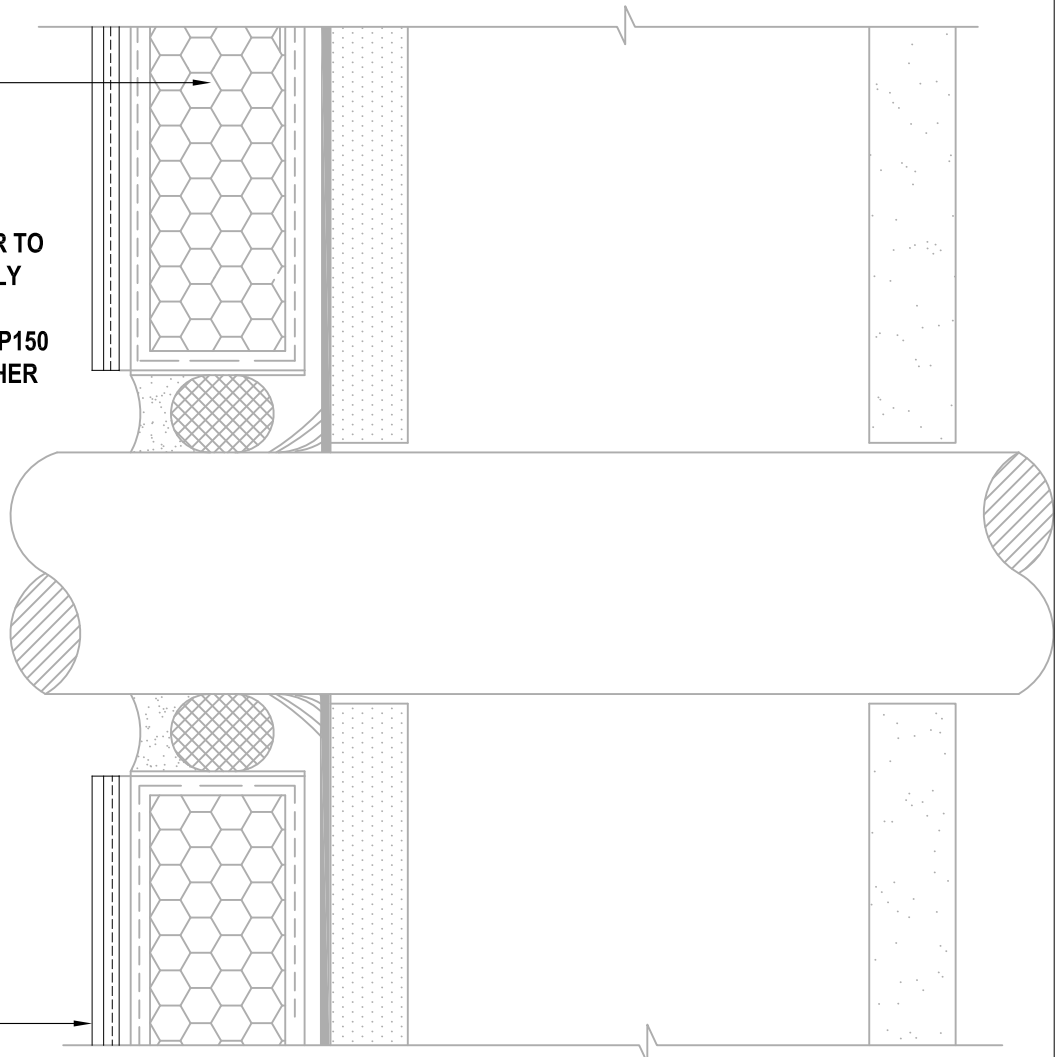
BASF
We create chemistry

EXISTING EIFS

NOTE: IF SEALANT IS REMOVED PRIOR TO SENERGY LAMINA APPLICATION, APPLY BASECOAT INTO THE JOINT. USE MASTERSEAL NP100 / MASTERSEAL NP150 W/ MASTERSEAL P173 PRIMER OR OTHER ACCEPTABLE SEALANT*

SENERGY LAMINA:
SENERGY BASE COAT
SENERGY REINFORCING MESH
SENERGY FINISH COAT

*BY OTHERS



REFERENCE SMaRT EIFS PROCEDURES AND RESURFACING SPECIFICATION FOR FURTHER INFORMATION

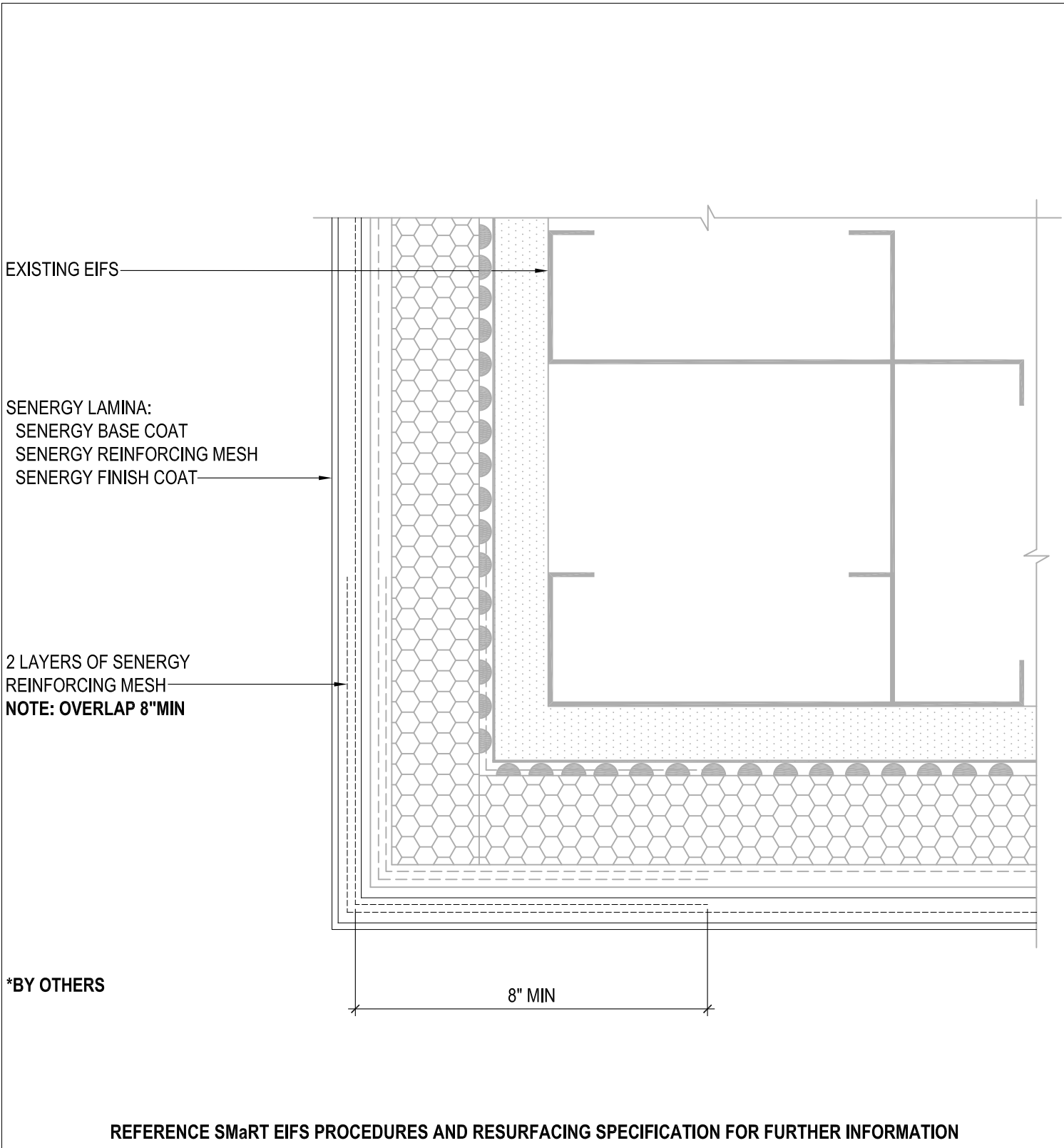
TYPICAL PIPE PENETRATION SENERGY EIFS RESURFACING SYSTEM

SCALE: NTS

16

Structure, substrates, flashing, and other items which are not part of the BASF SENERGY EIFS Resurfacing System are the responsibility of others. This detail is subject to change without notice. BASF Corporation - Wall Systems (herein after BASF Wall Systems) accepts no liability for the end use of this detail. For conditions not shown, consult BASF Wall Systems for review of specific detail.

BASF
We create chemistry



TYPICAL CORNER MESH APPLICATION SENERGY EIFS RESURFACING SYSTEM

SCALE: NTS

17

Structure, substrates, flashing, and other items which are not part of the BASF SENERGY *EIFS Resurfacing System* are the responsibility of others. This detail is subject to change without notice. BASF Corporation - Wall Systems (herein after BASF Wall Systems) accepts no liability for the end use of this detail. For conditions not shown, consult BASF Wall Systems for review of specific detail.

■ BASF

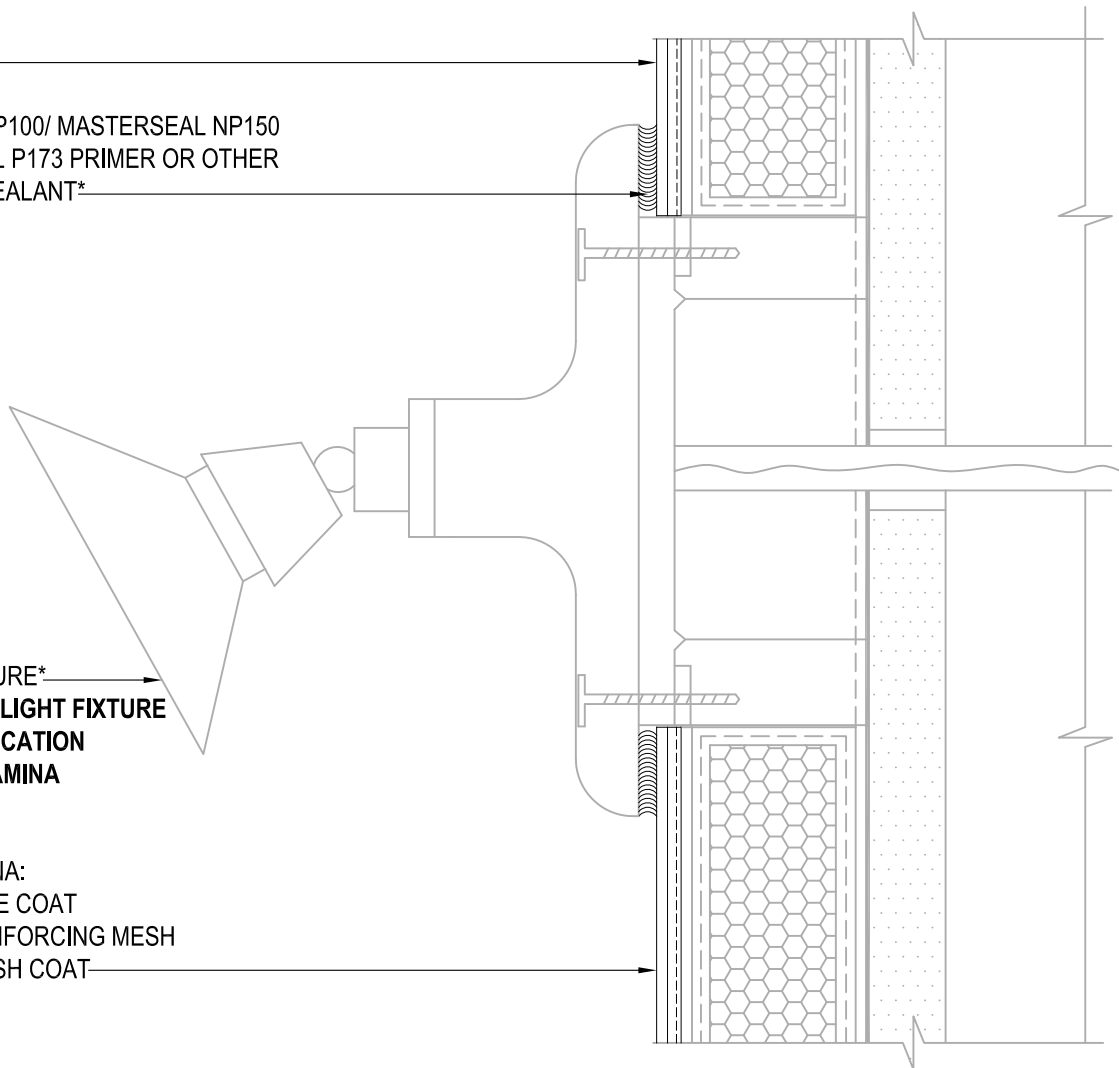
We create chemistry

EXISTING EIFS

MASTERSEAL NP100/ MASTERSEAL NP150
W/ MASTERSEAL P173 PRIMER OR OTHER
ACCEPTABLE SEALANT*

SET LIGHT FIXTURE*
NOTE: REMOVE LIGHT FIXTURE
PRIOR TO APPLICATION
OF SENERGY LAMINA

SENERGY LAMINA:
SENERGY BASE COAT
SENERGY REINFORCING MESH
SENERGY FINISH COAT



*BY OTHERS

REFERENCE SMaRT EIFS PROCEDURES AND RESURFACING SPECIFICATION FOR FURTHER INFORMATION

TYPICAL LIGHT FIXTURE

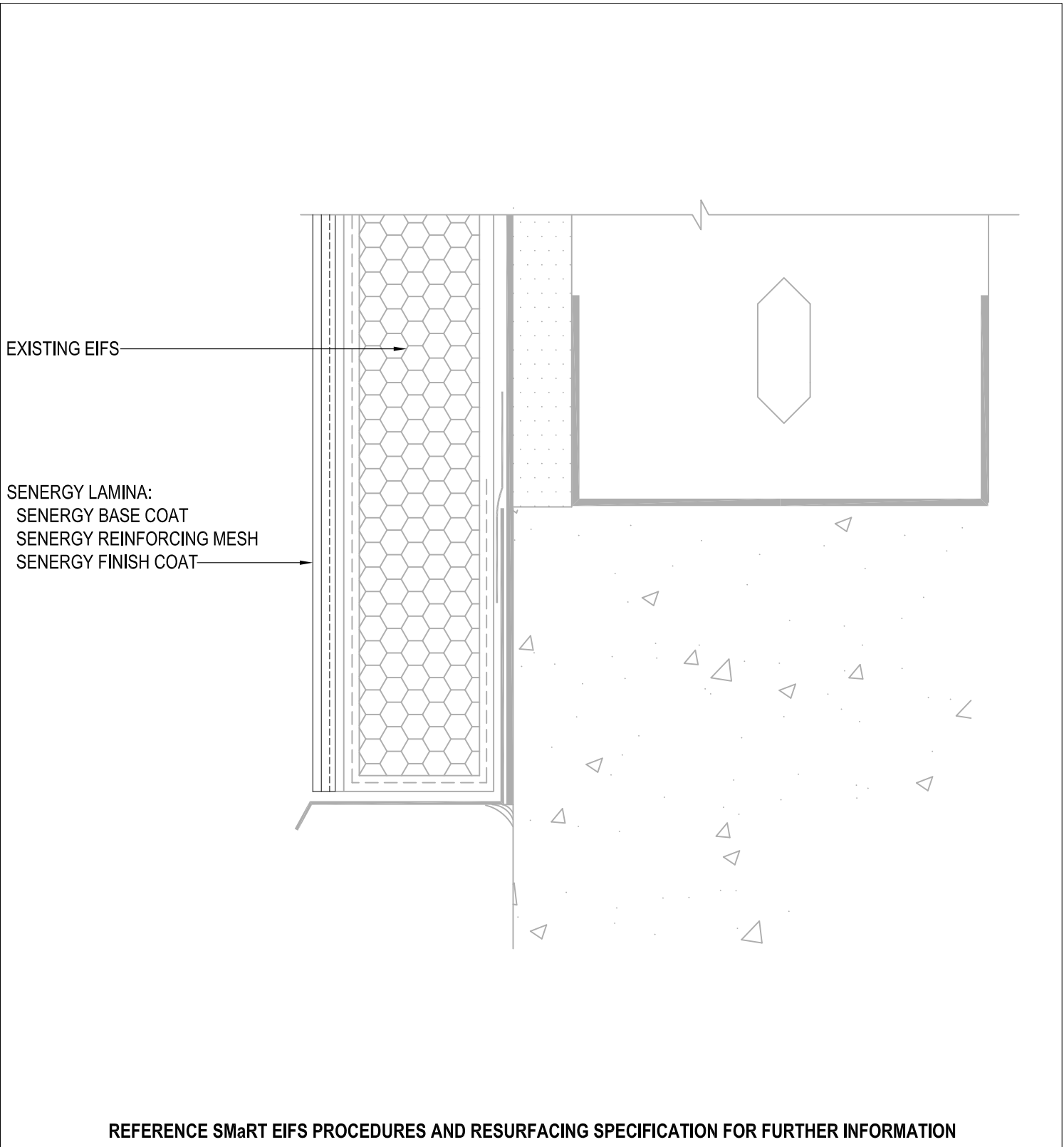
SENERGY EIFS RESURFACING SYSTEM

SCALE: NTS

18

Structure, substrates, flashing, and other items which are not part of the BASF SENERGY *EIFS Resurfacing System* are the responsibility of others. This detail is subject to change without notice. BASF Corporation - Wall Systems (herein after BASF Wall Systems) accepts no liability for the end use of this detail. For conditions not shown, consult BASF Wall Systems for review of specific detail.

BASF
We create chemistry



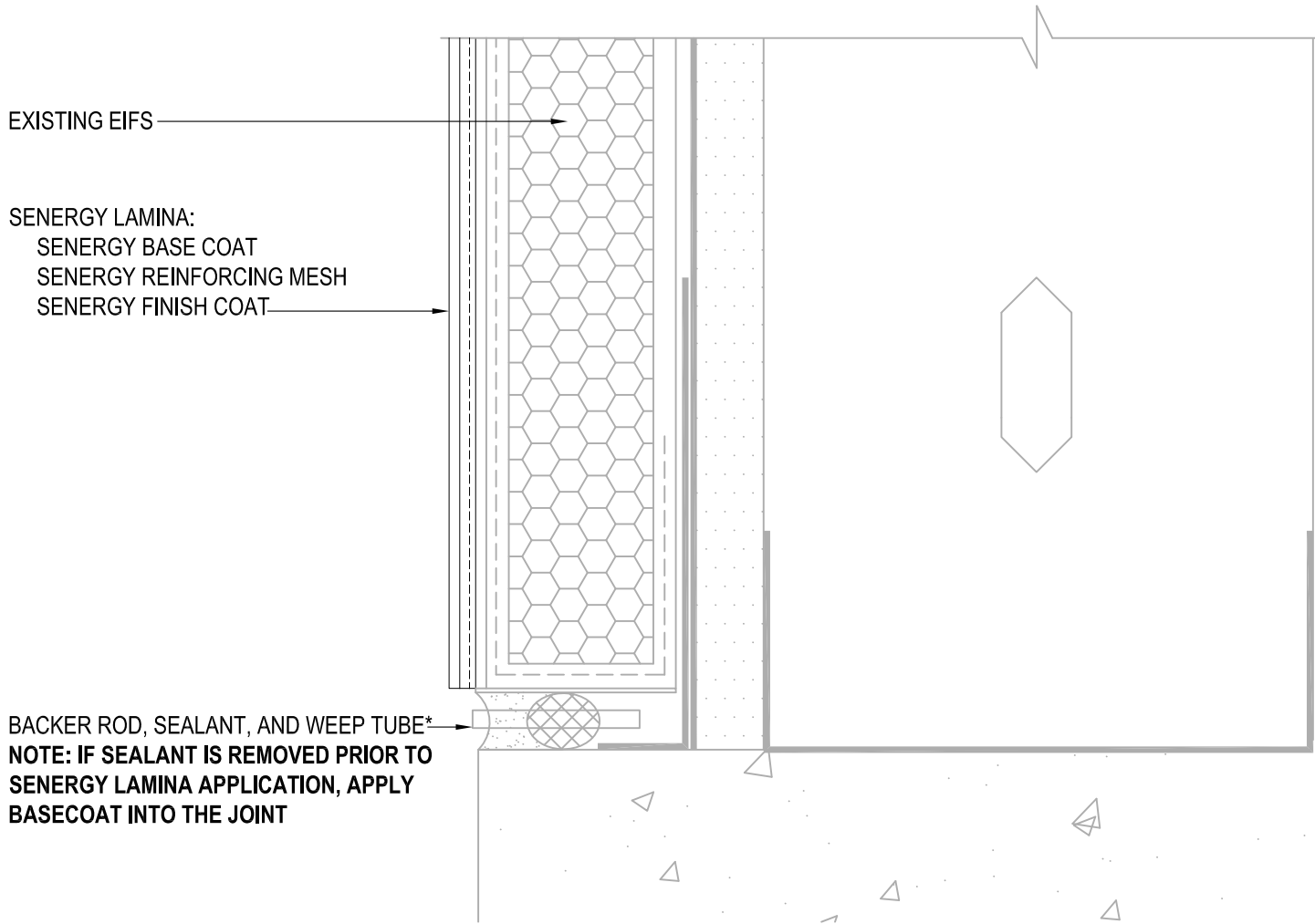
TYPICAL TERMINATION AT FOUNDATION SENERGY EIFS RESURFACING SYSTEM

SCALE: NTS

19

Structure, substrates, flashing, and other items which are not part of the BASF SENERGY *EIFS Resurfacing System* are the responsibility of others. This detail is subject to change without notice. BASF Corporation - Wall Systems (herein after BASF Wall Systems) accepts no liability for the end use of this detail. For conditions not shown, consult BASF Wall Systems for review of specific detail.

BASF
We create chemistry



*BY OTHERS

REFERENCE SMaRT EIFS PROCEDURES AND RESURFACING SPECIFICATION FOR FURTHER INFORMATION

TYPICAL TERMINATION AT FOUNDATION (FLUSH) SENERGY EIFS RESURFACING SYSTEM

SCALE: NTS

20

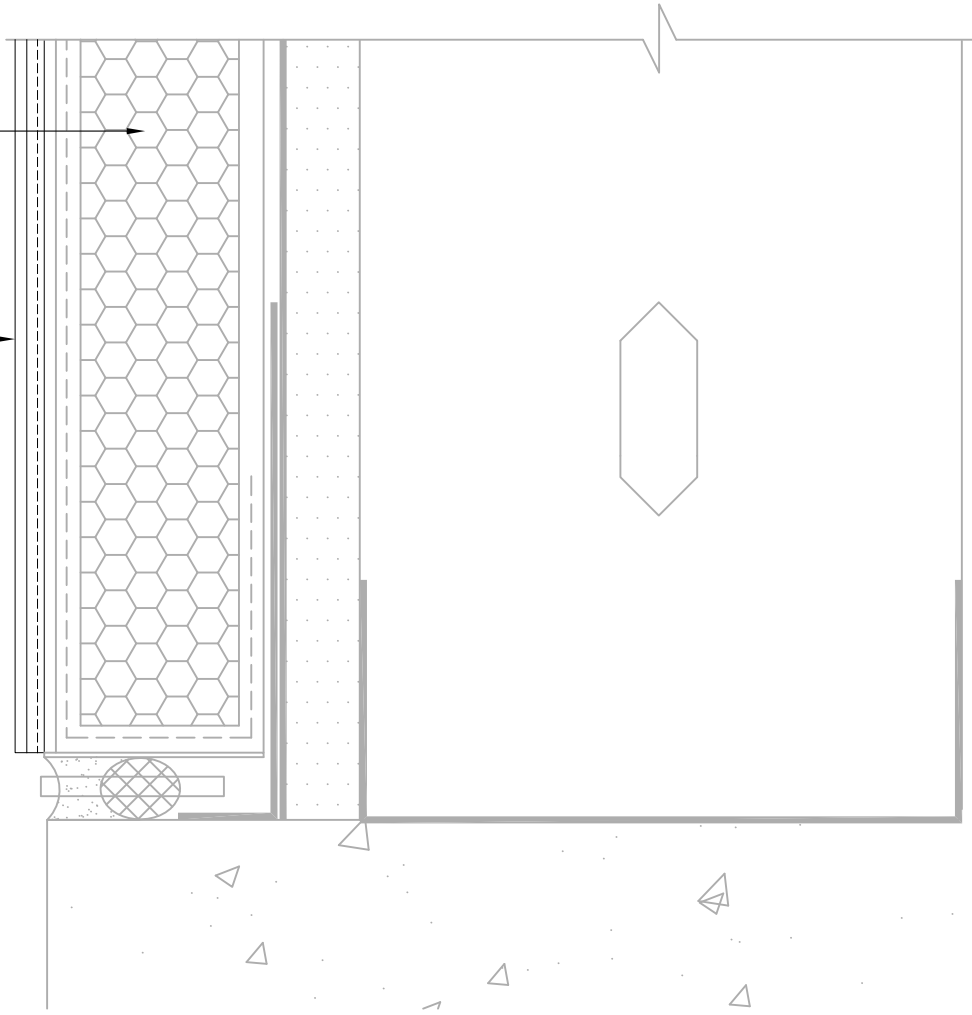
Structure, substrates, flashing, and other items which are not part of the BASF SENERGY *EIFS Resurfacing System* are the responsibility of others. This detail is subject to change without notice. BASF Corporation - Wall Systems (herein after BASF Wall Systems) accepts no liability for the end use of this detail. For conditions not shown, consult BASF Wall Systems for review of specific detail.

BASF
We create chemistry

EXISTING EIFS

SENERGY LAMINA:
SENERGY BASE COAT
SENERGY REINFORCING MESH
SENERGY FINISH COAT

NOTE: IF SEALANT IS REMOVED PRIOR
TO SENERGY LAMINA APPLICATION,
APPLY BASECOAT INTO THE JOINT. USE
MASTERSEAL NP100 / MASTERSEAL
NP150 W/ MASTERSEAL P173 PRIMER OR
OTHER ACCEPTABLE SEALANT*



*BY OTHERS

REFERENCE SMaRT EIFS PROCEDURES AND RESURFACING SPECIFICATION FOR FURTHER INFORMATION

TYPICAL TERMINATION AT FOUNDATION (FLUSH)

SENERGY EIFS RESURFACING SYSTEM

SCALE: NTS

20

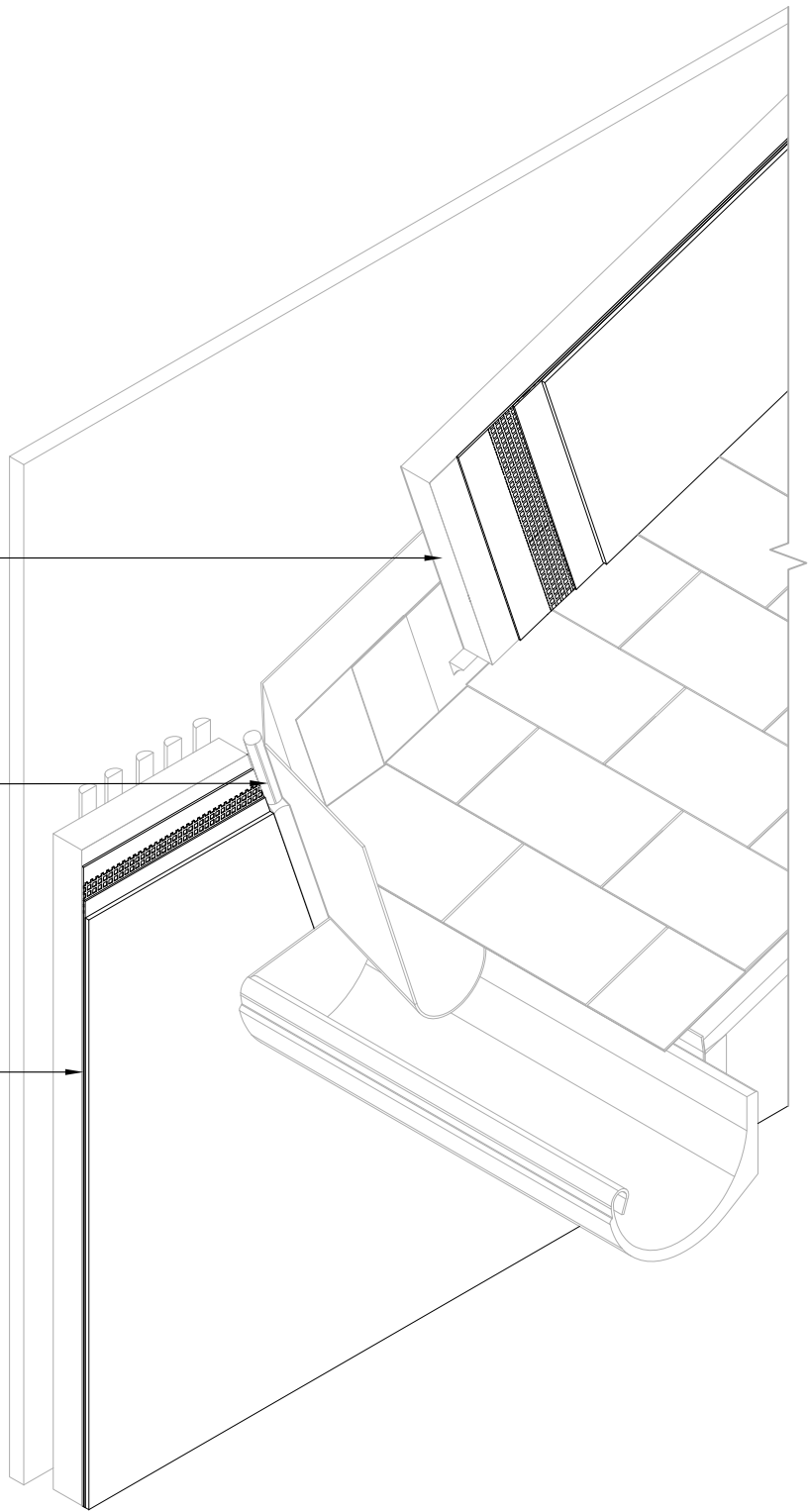
Structure, substrates, flashing, and other items which are not part of the BASF SENERGY *EIFS Resurfacing System* are the responsibility of others. This detail is subject to change without notice. BASF Corporation - Wall Systems (herein after BASF Wall Systems) accepts no liability for the end use of this detail. For conditions not shown, consult BASF Wall Systems for review of specific detail.

BASF
We create chemistry

EXISTING EIFS

BACKER ROD & SEALANT*
NOTE: IF SEALANT IS REMOVED PRIOR
TO SENERGY LAMINA APPLICATION,
APPLY BASECOAT INTO THE JOINT

SENERGY LAMINA:
SENERGY BASE COAT
SENERGY REINFORCING MESH
SENERGY FINISH COAT



*BY OTHERS

REFERENCE SMaRT EIFS PROCEDURES AND RESURFACING SPECIFICATION FOR FURTHER INFORMATION

TYPICAL KICK OUT FLASHING SENERGY EIFS RESURFACING SYSTEM

SCALE: NTS

21

Structure, substrates, flashing, and other items which are not part of the BASF SENERGY *EIFS Resurfacing System* are the responsibility of others. This detail is subject to change without notice. BASF Corporation - Wall Systems (herein after BASF Wall Systems) accepts no liability for the end use of this detail. For conditions not shown, consult BASF Wall Systems for review of specific detail.


We create chemistry