



Senergy[®]

Channeled Adhesive CI Design

Concrete / Masonry Typical Details

A brand of
MASTER[®]
» BUILDERS
SOLUTIONS

Channeled Adhesive CI Design

Design Details

Concrete / Masonry Typical Details

Table of contents

02	TYPICAL CHANNELED ADHESIVE CI APPLICATION (PLAN VIEW)	22	TYPICAL WINDOW SILL DETAIL (FLUSH)
03	TYPICAL APPLICATION OVER CMU	23	TYPICAL WINDOW HEAD (RECESSED)
05	TYPICAL AESTHETIC GROOVE	24	TYPICAL WINDOW JAMB (RECESSED)
06	TYPICAL CORNER MESH APPLICATION	25	TYPICAL WINDOW SILL DETAIL (RECESSED)
07	TYPICAL PIPE PENETRATION	28	TYPICAL METAL COPING DETAIL
08	TYPICAL LIGHT FIXTURE	29	TYPICAL PARAPET CAP DETAIL
09	TYPICAL VERTICAL EXPANSION JOINT DETAIL	30	TYPICAL KICK-OUT FLASHING
10	TYPICAL EXPANSION JOINT AT CHANGE IN SUBSTRATE	31	TYPICAL ROOF EDGE FLASHING DETAIL
11	TYPICAL EXPANSION JOINT DETAIL AT FLOORLINE	33	TYPICAL CORE MOUNTED RAILING ATTACHMENT
12	TYPICAL DRAINAGE AT FLOORLINE	34	TYPICAL RAILING ATTACHMENT
14	TYPICAL TERMINATION AT FOUNDATION	35	TYPICAL SIGN ATTACHMENT
15	TYPICAL CHANNELED ADHESIVE CI DESIGN ABUTMENT TO BRICK		
16	TYPICAL TERMINATION AT FOUNDATION (FLUSH)		
17	TYPICAL WINDOW HEAD (FLUSH)		
18	TYPICAL WINDOW HEAD (FLUSH) WITH WEEP TUBES		
19	TYPICAL WINDOW HEAD (FLUSH) WITH DIVERTER TRACK		
20	TYPICAL WINDOW HEAD FLASHING W/ SEALANT END DAM		
21	TYPICAL WINDOW JAMB (FLUSH)		

CMU*

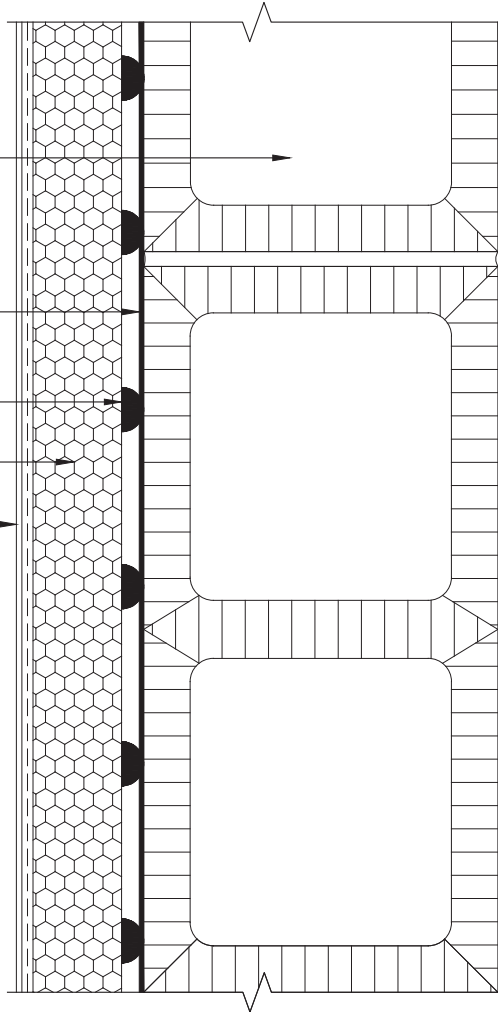
SENERSHIELD-R/SENERSHIELD-RS/
SENERSHIELD-VB

SENERGY ADHESIVE/BASE COAT
APPLIED TO EPS INSULATION BOARD

APPROVED EPS INSULATION BOARD

SENERGY LAMINA:
SENERGY BASE COAT
SENERGY REINFORCING MESH
SENERGY FINISH COAT

*BY OTHERS



REV 180205

TYPICAL CHanneled ADHESIVE CI APPLICATION (PLAN VIEW) SENERGY CHanneled ADHESIVE CI DESIGN

SCALE: NTS

02

Structure, substrates, flashing, and other items which are not part of the BASF SENERGY *Channeled Adhesive CI Design* system are the responsibility of others. This detail is subject to change without notice. BASF Corporation - Wall Systems (herein after BASF Wall Systems) accepts no liability for the end use of this detail. For conditions not shown, consult BASF Wall Systems for review of specific detail.


We create chemistry

CMU*

SENERSHIELD-R/SENERSHIELD-RS/
SENERSHIELD-VB

SENERGY ADHESIVE/BASE COAT
APPLIED TO EPS INSULATION BOARD

APPROVED EPS INSULATION BOARD

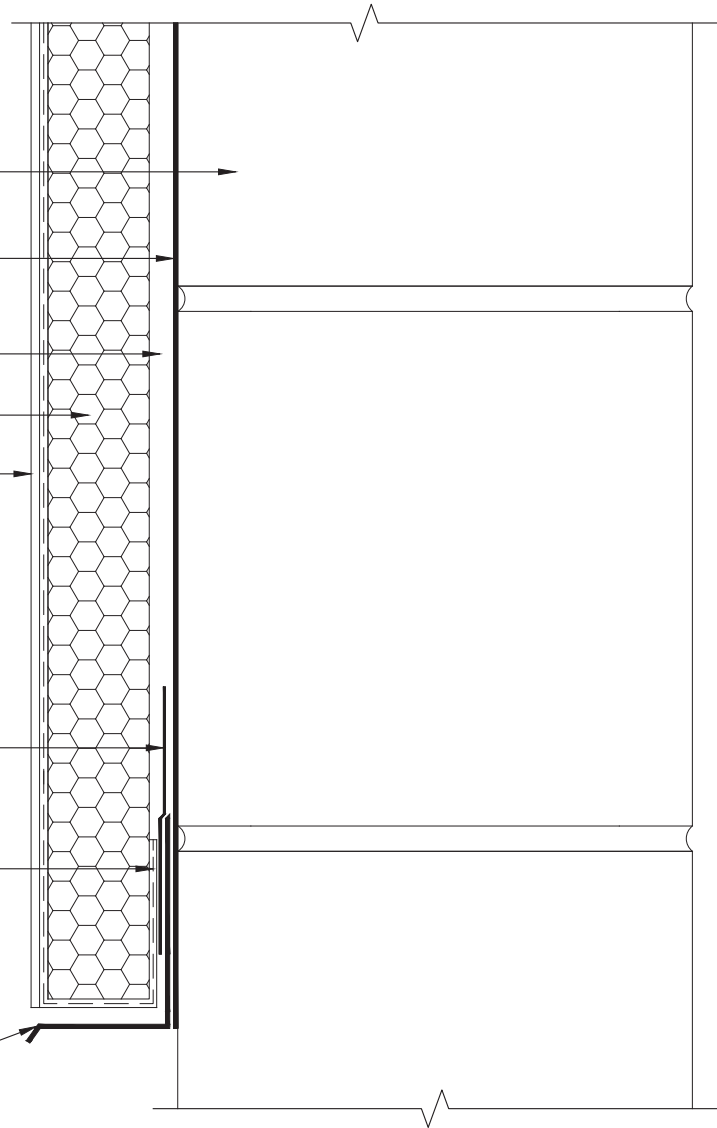
SENERGY LAMINA:
SENERGY BASE COAT
SENERGY REINFORCING MESH
SENERGY FINISH COAT

MAXFLASH, SHEATHING FABRIC
EMBEDDED IN SENERSHIELD-R;-RS;-VB,
OR WS FLASH 9 W/ FLASHING PRIMER

WRAP SENERGY BASE COAT AND
SENERGY REINFORCING MESH

FLASHING*

*BY OTHERS



REV 180205

TYPICAL APPLICATION OVER CMU

SENERGY CHanneLED ADHESIVE CI DESIGN

SCALE: NTS

03

Structure, substrates, flashing, and other items which are not part of the BASF SENERGY *Channeled Adhesive CI Design* system are the responsibility of others. This detail is subject to change without notice. BASF Corporation - Wall Systems (herein after BASF Wall Systems) accepts no liability for the end use of this detail. For conditions not shown, consult BASF Wall Systems for review of specific detail.

■ - BASF
We create chemistry

CMU*

SENERSHIELD-R/SENERSHIELD-RS/
SENERSHIELD-VB

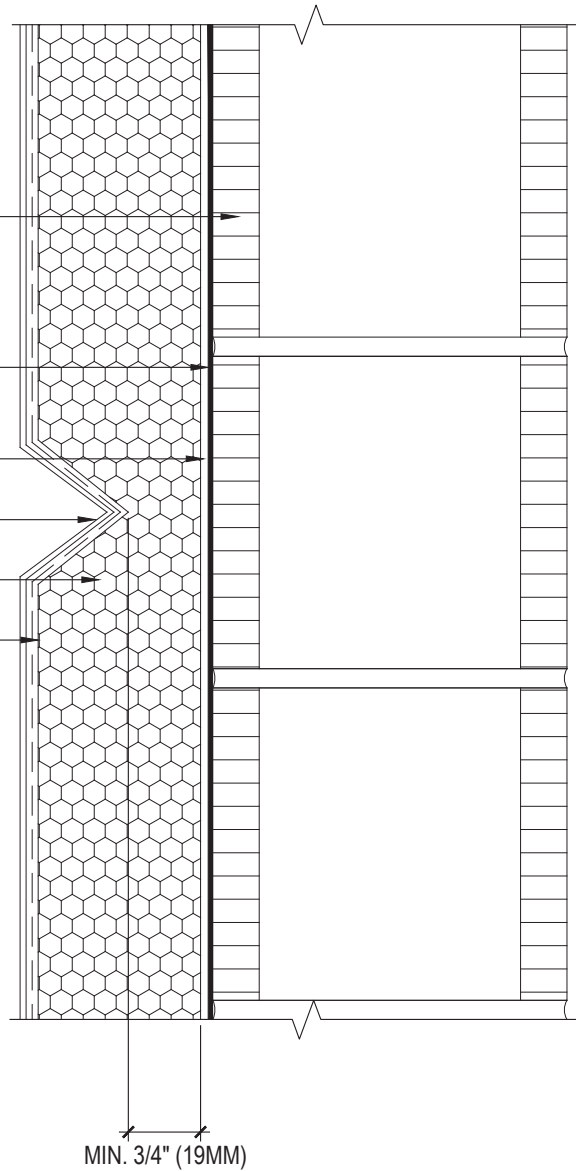
SENERGY ADHESIVE/BASE COAT
APPLIED TO EPS INSULATION BOARD

AESTHETIC GROOVE

APPROVED EPS INSULATION BOARD

SENERGY LAMINA:
SENERGY BASE COAT
SENERGY REINFORCING MESH
SENERGY FINISH COAT

*BY OTHERS



MIN. 3/4" (19MM)

REV 180205

TYPICAL AESTHETIC GROOVE SENERGY CHanneLED ADHESIVE CI DESIGN

SCALE: NTS

05

Structure, substrates, flashing, and other items which are not part of the BASF SENERGY *Channeled Adhesive CI Design* system are the responsibility of others. This detail is subject to change without notice. BASF Corporation - Wall Systems (herein after BASF Wall Systems) accepts no liability for the end use of this detail. For conditions not shown, consult BASF Wall Systems for review of specific detail.

BASF
We create chemistry

CMU*

SENERSHIELD-R/SENERSHIELD-RS/
SENERSHIELD-VB

SENERGY ADHESIVE/ BASE COAT

APPROVED EPS INSULATION BOARD

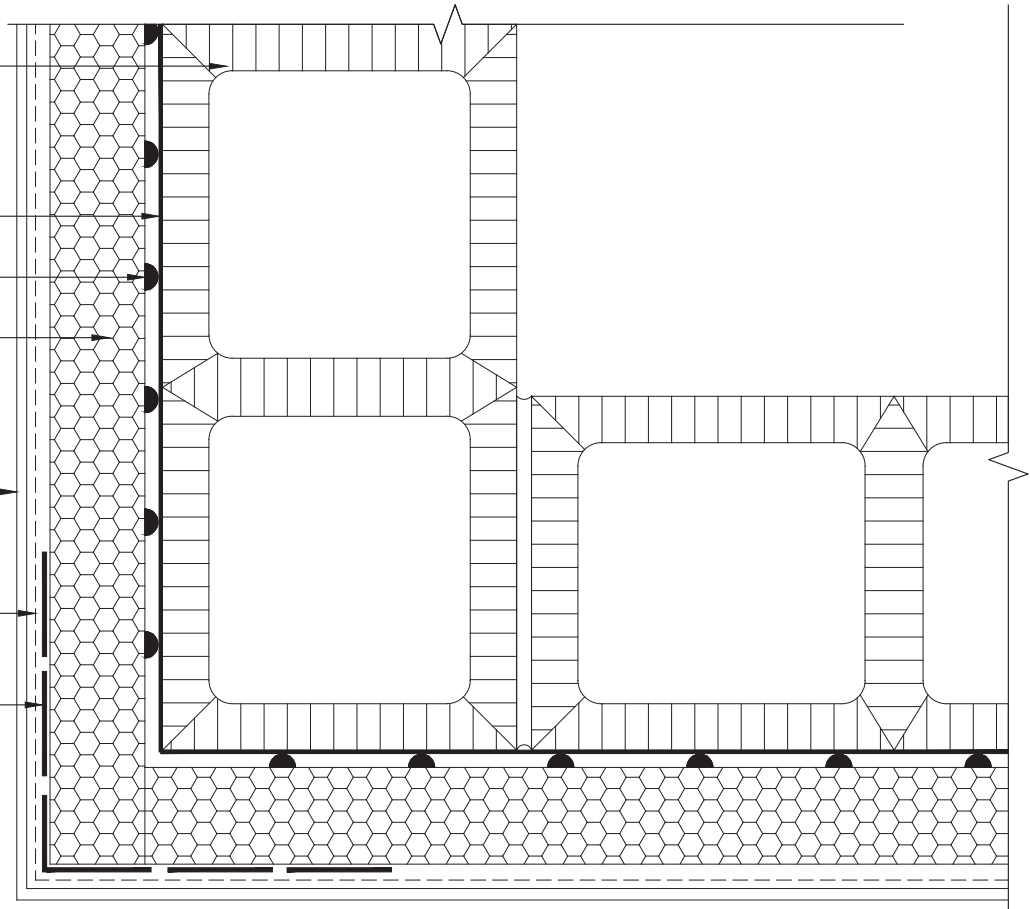
SENERGY FINISH COAT

FLEXGUARD 4 REINFORCING MESH,
INTERMEDIATE 6 OR INTERMEDIATE 12
EMBEDDED IN SENERGY BASE COAT

CORNER MESH EMBEDDED IN
SENERGY BASE COAT

*BY OTHERS

NOTE: A CONTINUOUS OVERLAY OF
FLEXGUARD 4, INTERMEDIATE 6, OR
INTERMEDIATE 12 IS REQUIRED OVER
CORNER MESH



REV 180205

TYPICAL CORNER MESH APPLICATION

SENERGY CHanneled ADHESIVE CI DESIGN

SCALE: NTS

06

Structure, substrates, flashing, and other items which are not part of the BASF SENERGY *Channeled Adhesive CI Design* system are the responsibility of others. This detail is subject to change without notice. BASF Corporation - Wall Systems (herein after BASF Wall Systems) accepts no liability for the end use of this detail. For conditions not shown, consult BASF Wall Systems for review of specific detail.

BASF
We create chemistry

CMU*

SENERSHIELD-R/SENERSHIELD-RS/
SENERSHIELD-VB

WRAP SENERGY BASE COAT AND
SENERGY REINFORCING MESH

BASF COLOR COAT

BACKER ROD AND SEALANT*

PIPE*

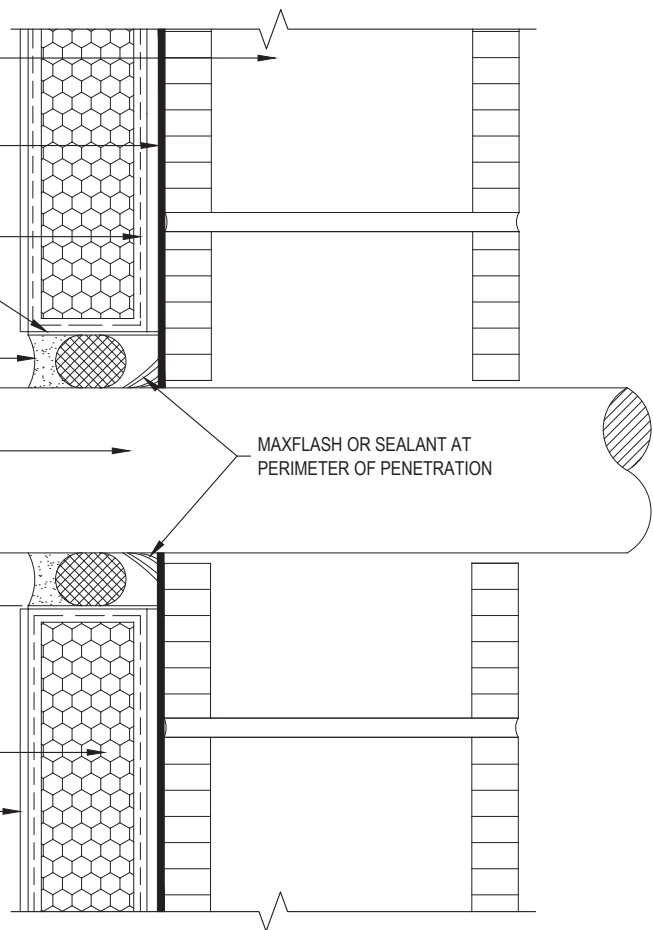
MAXFLASH OR SEALANT AT
PERIMETER OF PENETRATION

MIN. 1/2" (13 mm)

EPS INSULATION BOARD

SENERGY LAMINA:
SENERGY BASE COAT
SENERGY REINFORCING MESH
SENERGY FINISH COAT

*BY OTHERS



REV 180205

TYPICAL PIPE PENETRATION

SENERGY CHanneled ADHESIVE CI DESIGN

SCALE: NTS

07

Structure, substrates, flashing, and other items which are not part of the BASF SENERGY *Channeled Adhesive CI Design* system are the responsibility of others. This detail is subject to change without notice. BASF Corporation - Wall Systems (herein after BASF Wall Systems) accepts no liability for the end use of this detail. For conditions not shown, consult BASF Wall Systems for review of specific detail.

■ - BASF
We create chemistry

SENERSHIELD-R/SENERSHIELD-RS/
SENERSHIELD-VB

CMU*

WRAP SENERGY BASE COAT AND
SENERGY REINFORCING MESH

SET FLANGE IN SEALANT
OR PROVIDE GASKET*

BACKER ROD AND SEALANT*

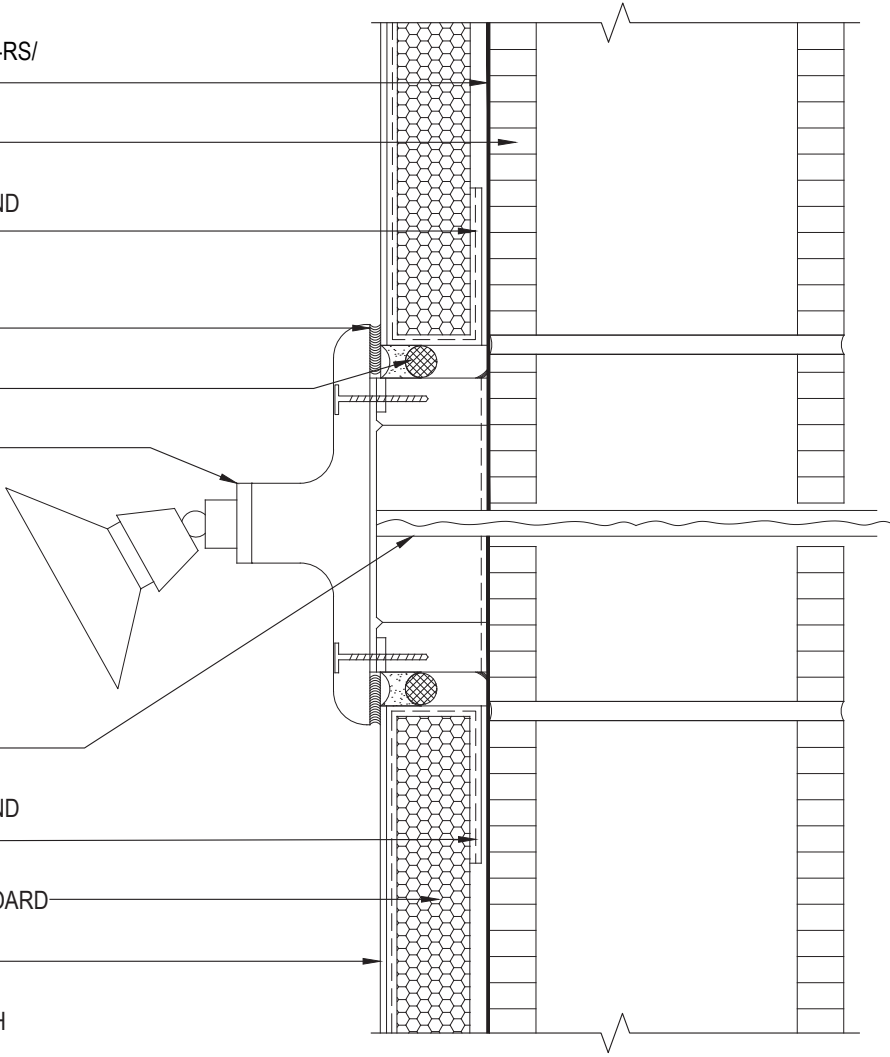
LIGHT FIXTURE*

WIRE OPENING*

WRAP SENERGY BASE COAT AND
SENERGY REINFORCING MESH

APPROVED EPS INSULATION BOARD

SENERGY LAMINA:
SENERGY BASE COAT
SENERGY REINFORCING MESH
SENERGY FINISH COAT



*BY OTHERS

REV 180205

TYPICAL LIGHT FIXTURE SENERGY CHanneLED ADHESIVE CI DESIGN

SCALE: NTS

08

Structure, substrates, flashing, and other items which are not part of the BASF SENERGY *Channeled Adhesive CI Design* system are the responsibility of others. This detail is subject to change without notice. BASF Corporation - Wall Systems (herein after BASF Wall Systems) accepts no liability for the end use of this detail. For conditions not shown, consult BASF Wall Systems for review of specific detail.

■ - BASF
We create chemistry

CMU*

SENERSHIELD-R/SENERSHIELD-RS/
SENERSHIELD-VB

WRAP BASE COAT AND
SENERGY REINFORCING MESH

WS FLASH 9 W/ FLASHING PRIMER

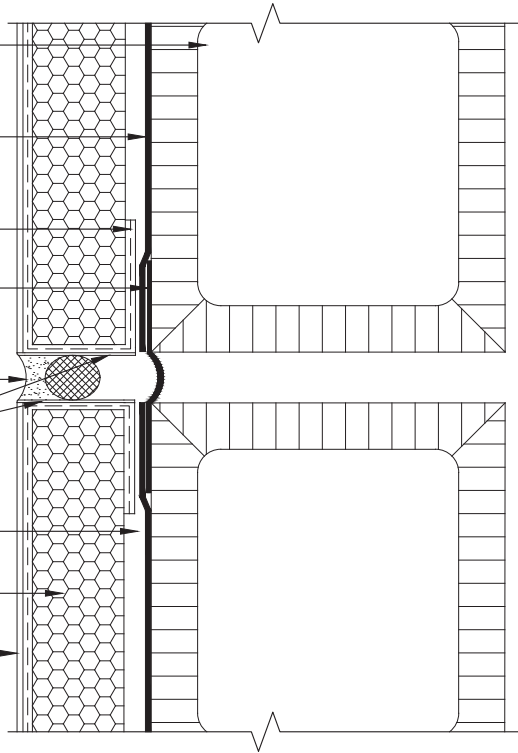
BACKER ROD AND SEALANT *
WIDTH PER DESIGN

BASF COLOR COAT

SENERGY ADHESIVE/BASE COAT
APPLIED TO EPS INSULATION BOARD

APPROVED EPS INSULATION BOARD

SENERGY LAMINA:
SENERGY BASE COAT
SENERGY REINFORCING MESH
SENERGY FINISH COAT



*BY OTHERS

REV 180205

TYPICAL VERTICAL EXPANSION JOINT DETAIL SENERGY CHanneLED ADHESIVE CI DESIGN

SCALE: NTS

09

Structure, substrates, flashing, and other items which are not part of the BASF SENERGY *Channeled Adhesive CI Design* system are the responsibility of others. This detail is subject to change without notice. BASF Corporation - Wall Systems (herein after BASF Wall Systems) accepts no liability for the end use of this detail. For conditions not shown, consult BASF Wall Systems for review of specific detail.

BASF
We create chemistry

FRAMING*

ACCEPTABLE SUBSTRATE*

ACCEPTABLE SHEATHING*

WS FLASH WITH FLASHING PRIMER

SENERSHIELD-R/SENERSHIELD-RS/
SENERSHIELD-VB

SENERGY ADHESIVE/BASE COAT
APPLIED TO EPS INSULATION BOARD

APPROVED EPS INSULATION BOARD

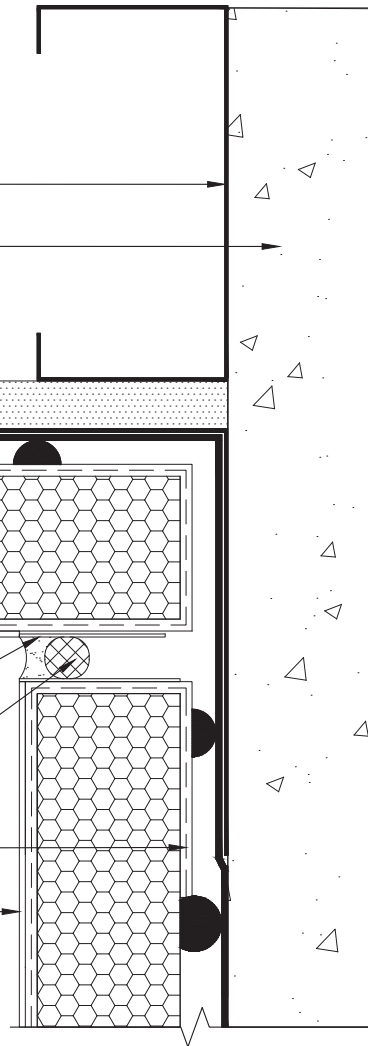
BASF COLOR COAT

BACKER ROD & SEALANT
(WIDTH PER DESIGN)*

WRAP SENERGY BASE COAT AND
SENERGY REINFORCING MESH

SENERGY LAMINA:
SENERGY BASE COAT
SENERGY REINFORCING MESH
SENERGY FINISH COAT

*BY OTHERS



REV 180205

TYPICAL EXPANSION JOINT AT CHANGE IN SUBSTRATE SENERGY CHANNELED ADHESIVE CI DESIGN

SCALE: NTS

10

Structure, substrates, flashing, and other items which are not part of the BASF SENERGY *Channeled Adhesive CI Design* system are the responsibility of others. This detail is subject to change without notice. BASF Corporation - Wall Systems (herein after BASF Wall Systems) accepts no liability for the end use of this detail. For conditions not shown, consult BASF Wall Systems for review of specific detail.

BASF
We create chemistry

FLOOR SLAB*

ACCEPTABLE SHEATHING*

SENERSHIELD-R/SENERSHIELD-RS/
SENERSHIELD-VB

SENERGY BASE COAT

WRAP SENERGY BASE COAT AND
SENERGY REINFORCING MESH

WS FLASH 9 W/ FLASHING PRIMER

BACKER ROD AND SEALANT*

WIDTH PER DESIGN

BASF COLOR COAT

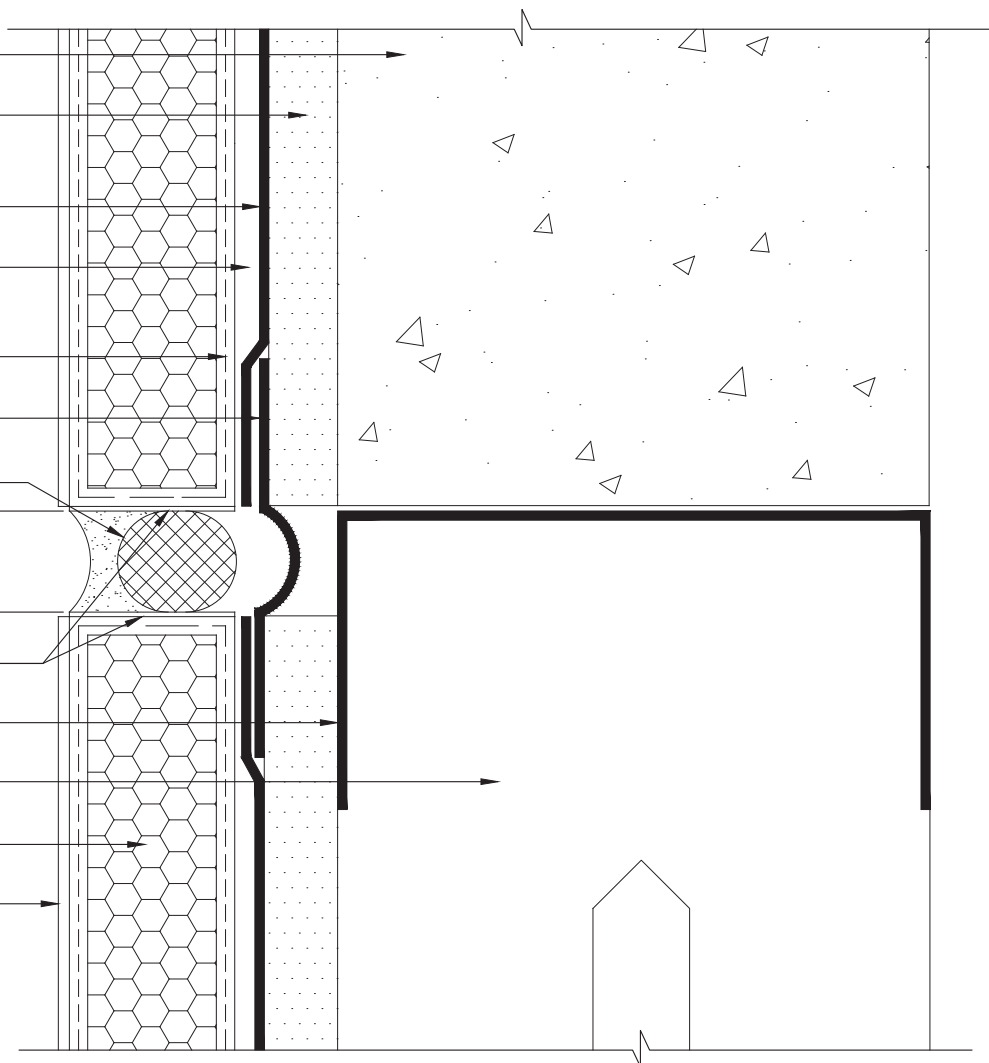
SLIP TRACK*

FRAMING*

APPROVED EPS INSULATION BOARD

SENERGY LAMINA:
SENERGY BASE COAT
SENERGY REINFORCING MESH
SENERGY FINISH COAT

*BY OTHERS



REV 180205

TYPICAL EXPANSION JOINT DETAIL AT FLOORLINE SENERGY CHanneled ADHESIVE CI DESIGN

SCALE: NTS

11

Structure, substrates, flashing, and other items which are not part of the BASF SENERGY *Channeled Adhesive CI Design* system are the responsibility of others. This detail is subject to change without notice. BASF Corporation - Wall Systems (herein after BASF Wall Systems) accepts no liability for the end use of this detail. For conditions not shown, consult BASF Wall Systems for review of specific detail.

BASF
We create chemistry

FLOOR SLAB*

SENERSHIELD-R/SENERSHIELD-RS/
SENERSHIELD-VB

MAXFLASH, SHEATHING FABRIC
EMBEDDED IN SEENERSHIELD-R;-RS;-VB,
OR WS FLASH 9 W/ FLASHING PRIMER

ACCEPTABLE SHEATHING*

SENERGY ADHESIVE/BASE COAT
APPLIED TO EPS INSULATION BOARD

WS FLASH 9 WITH FLASHING PRIMER

FLASHING*

BACKER ROD & SEALANT
(WIDTH PER DESIGN)*

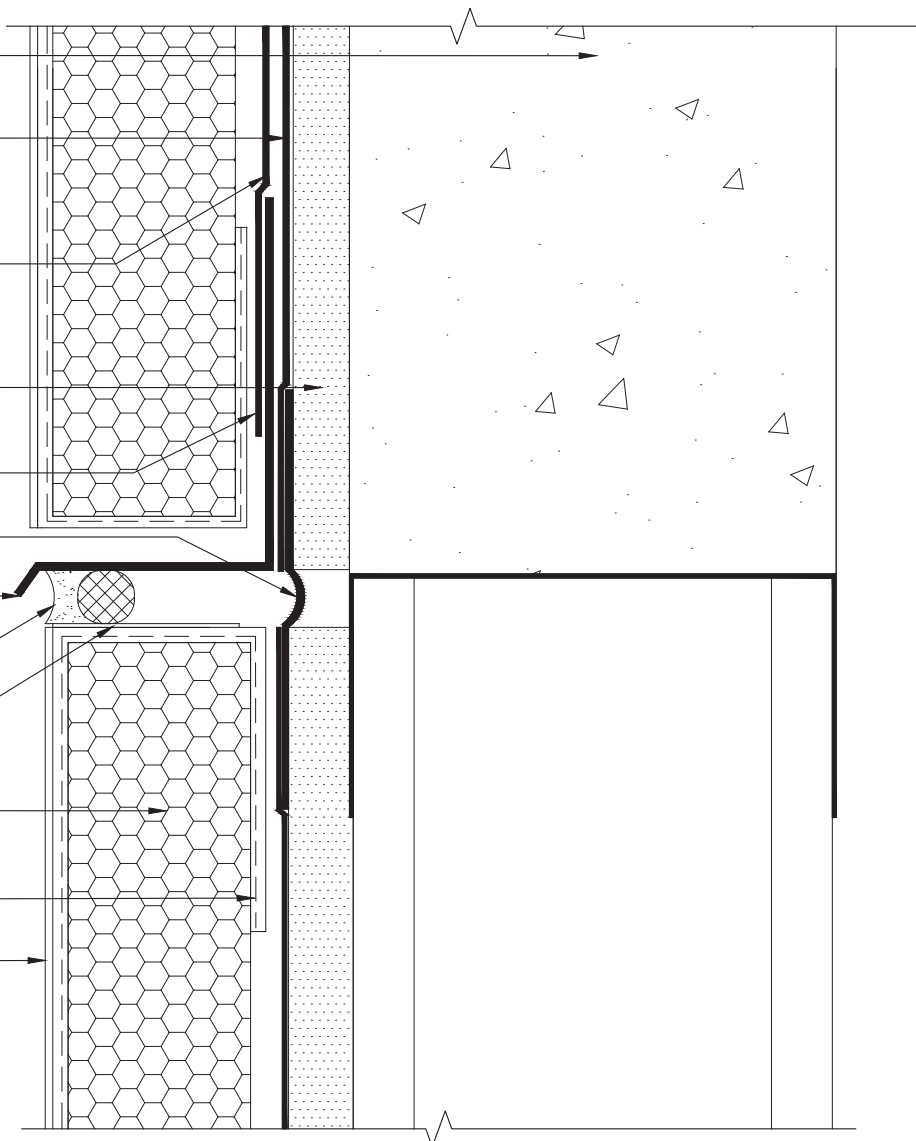
BASF COLOR COAT

APPROVED EPS INSULATION BOARD

WRAP SENERGY BASE COAT AND
SENERGY REINFORCING MESH

SENERGY LAMINA:
SENERGY BASE COAT
SENERGY REINFORCING MESH
SENERGY FINISH COAT

*BY OTHERS



REV 180205

TYPICAL DRAINAGE AT FLOORLINE SENERGY CHanneled ADHESIVE CI DESIGN

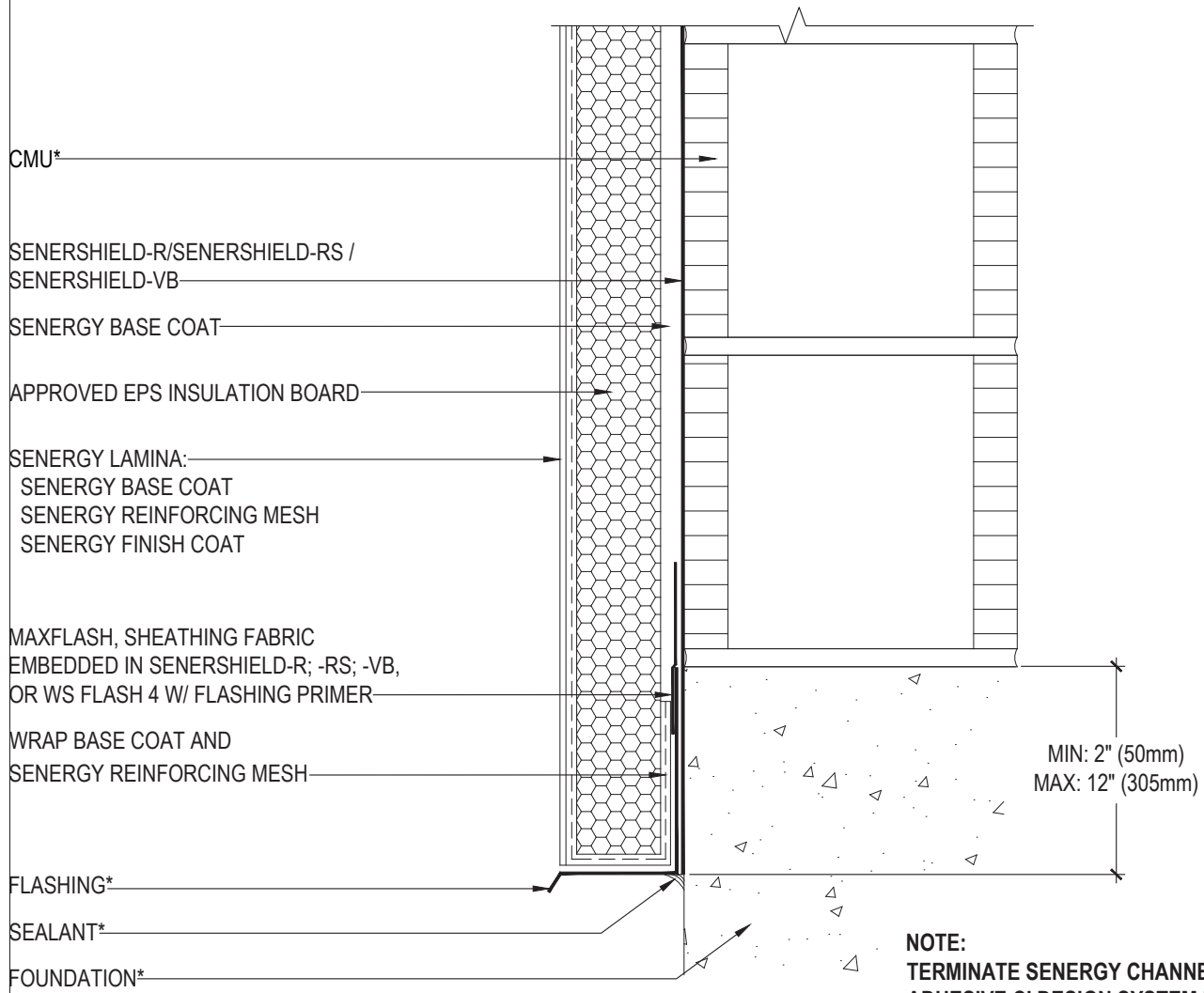
SCALE: NTS

12

Structure, substrates, flashing, and other items which are not part of the BASF SEENERGY *Channeled Adhesive CI Design* system are the responsibility of others. This detail is subject to change without notice. BASF Corporation - Wall Systems (herein after BASF Wall Systems) accepts no liability for the end use of this detail. For conditions not shown, consult BASF Wall Systems for review of specific detail.

■ - BASF

We create chemistry



CMU*

SENERSHIELD-R/SENERSHIELD-RS /
SENERSHIELD-VB

SENERGY BASE COAT

APPROVED EPS INSULATION BOARD

SENERGY LAMINA:
SENERGY BASE COAT
SENERGY REINFORCING MESH
SENERGY FINISH COAT

MAXFLASH, SHEATHING FABRIC
EMBEDDED IN SENERSHIELD-R; -RS; -VB,
OR WS FLASH 4 W/ FLASHING PRIMER

WRAP BASE COAT AND
SENERGY REINFORCING MESH

FLASHING*

SEALANT*

FOUNDATION*

MIN: 2" (50mm)
MAX: 12" (305mm)

NOTE:
TERMINATE SENERGY CHanneled
ADHESIVE CI DESIGN SYSTEM MIN.
8" (203 mm) ABOVE GRADE

*BY OTHERS

REV 180205

TYPICAL TERMINATION AT FOUNDATION SENERGY CHanneled ADHESIVE CI DESIGN

SCALE: NTS
14

Structure, substrates, flashing, and other items which are not part of the BASF SENERGY *Channeled Adhesive CI Design* system are the responsibility of others. This detail is subject to change without notice. BASF Corporation - Wall Systems (herein after BASF Wall Systems) accepts no liability for the end use of this detail. For conditions not shown, consult BASF Wall Systems for review of specific detail.



MAXFLASH, SHEATHING FABRIC
EMBEDDED IN SENERSHIELD-R; -RS; -VB,
OR WS FLASH 4 W/ FLASHING PRIMER

SENERGY LAMINA:
SENERGY BASE COAT
SENERGY REINFORCING MESH
SENERGY FINISH COAT

SENERSHIELD-R/SENERSHIELD-RS/
SENERSHIELD-VB

APPROVED EPS INSULATION BOARD

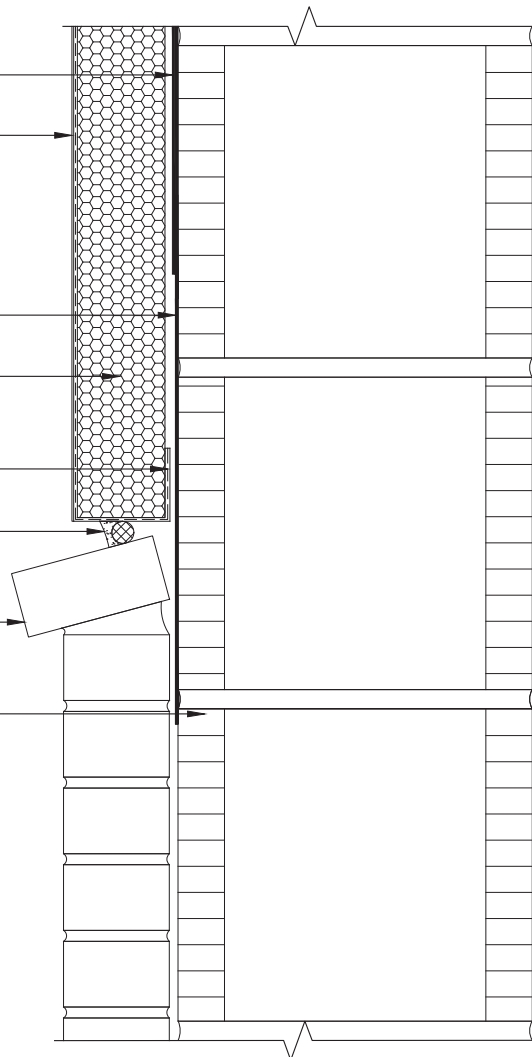
WRAP SENERGY BASE COAT AND
SENERGY REINFORCING MESH

BACKER ROD & SEALANT*

BRICK*

CMU*

*BY OTHERS



REV 180205

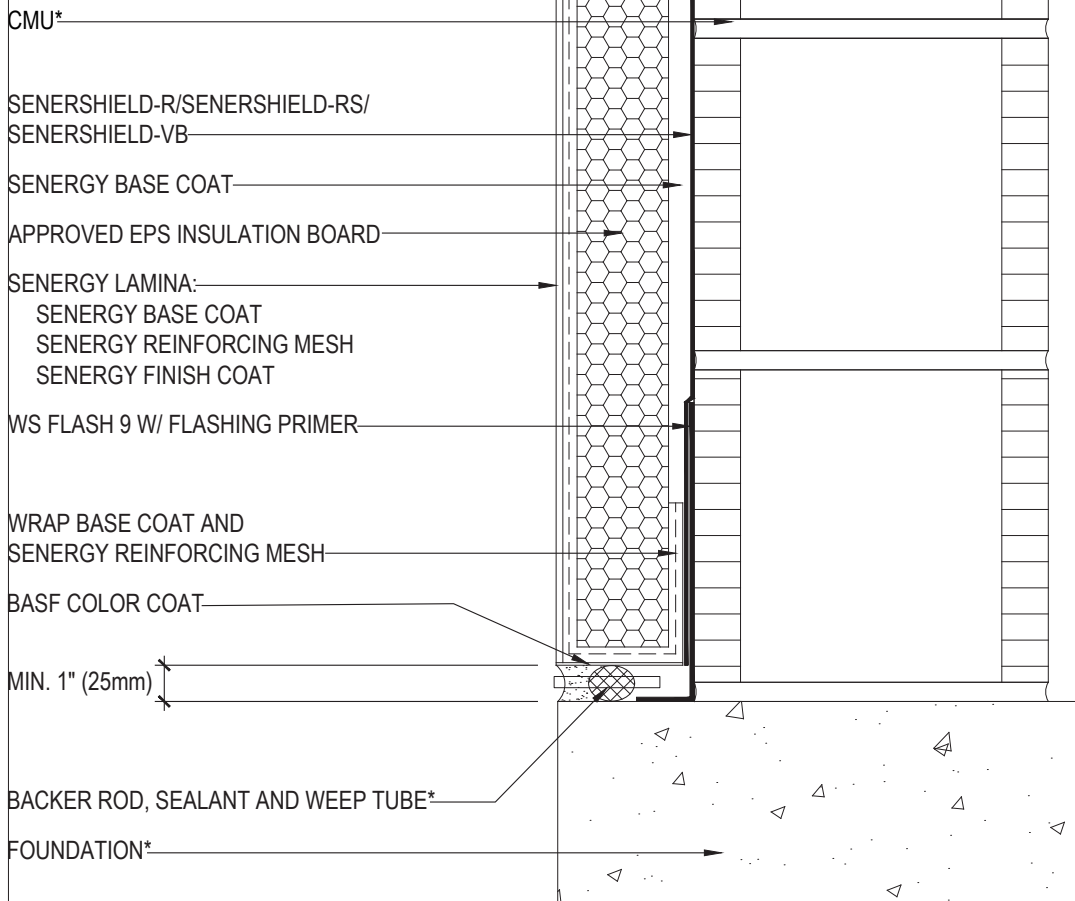
TYPICAL CHANNELED ADHESIVE CI DESIGN ABUTMENT TO BRICK SENERGY CHANNELED ADHESIVE CI DESIGN

SCALE: NTS

15

Structure, substrates, flashing, and other items which are not part of the BASF SENERGY *Channeled Adhesive CI Design* system are the responsibility of others. This detail is subject to change without notice. BASF Corporation - Wall Systems (herein after BASF Wall Systems) accepts no liability for the end use of this detail. For conditions not shown, consult BASF Wall Systems for review of specific detail.

BASF
We create chemistry



*BY OTHERS

REV 180205

TYPICAL TERMINATION AT FOUNDATION (FLUSH) SENERGY CHanneled ADHESIVE CI DESIGN

SCALE: NTS

16

Structure, substrates, flashing, and other items which are not part of the BASF SENERGY *Channeled Adhesive CI Design* system are the responsibility of others. This detail is subject to change without notice. BASF Corporation - Wall Systems (herein after BASF Wall Systems) accepts no liability for the end use of this detail. For conditions not shown, consult BASF Wall Systems for review of specific detail.

BASF
We create chemistry

CMU*
 SENERSHIELD-R/SENERSHIELD-RS/
 SENERSHIELD-VB
 SENERGY ADHESIVE/BASE COAT
 APPLIED TO EPS INSULATION BOARD
 APPROVED EPS INSULATION BOARD

SENERGY LAMINA:
 SENERGY BASE COAT
 SENERGY REINFORCING MESH
 SENERGY FINISH COAT

MAXFLASH, SHEATHING FABRIC
 EMBEDDED IN SENERSHIELD-R; -RS; -VB,
 OR WS FLASH 9 W/ FLASHING PRIMER

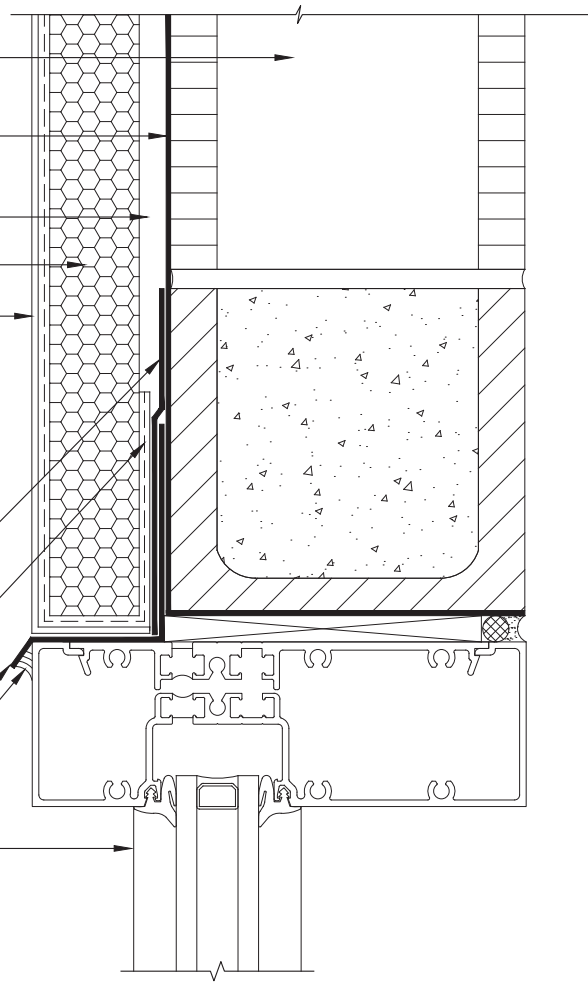
WRAP SENERGY BASE COAT AND
 SENERGY REINFORCING MESH

FLASHING*
 SEALANT*

WINDOW*

*BY OTHERS

NOTE: WRAP SENERSHIELD-R/ -RS/ -VB INTO ROUGH
 OPENING ON HEAD IF ALSO INTENDED TO BE
 AN AIR BARRIER.



REV 180205

TYPICAL WINDOW HEAD (FLUSH) SENERGY CHanneLED ADHESIVE CI DESIGN

SCALE: NTS
17

Structure, substrates, flashing, and other items which are not part of the BASF SENERGY *Channeled Adhesive CI Design* system are the responsibility of others. This detail is subject to change without notice. BASF Corporation - Wall Systems (herein after BASF Wall Systems) accepts no liability for the end use of this detail. For conditions not shown, consult BASF Wall Systems for review of specific detail.



CMU*

SENERSHIELD-R/SENERSHIELD-RS/
SENERSHIELD-VB

SENERGY ADHESIVE/ BASE COAT
APPLIED TO EPS INSULATION BOARD

APPROVED EPS INSULATION BOARD

SENERGY LAMINA:
SENERGY BASE COAT
SENERGY REINFORCING MESH
SENERGY FINISH COAT

MAXFLASH, SHEATHING FABRIC
EMBEDDED IN SENERSHIELD-R; -RS; -VB,
OR WS FLASH 9 W/ FLASHING PRIMER

WRAP SENERGY BASE COAT AND
SENERGY REINFORCING MESH

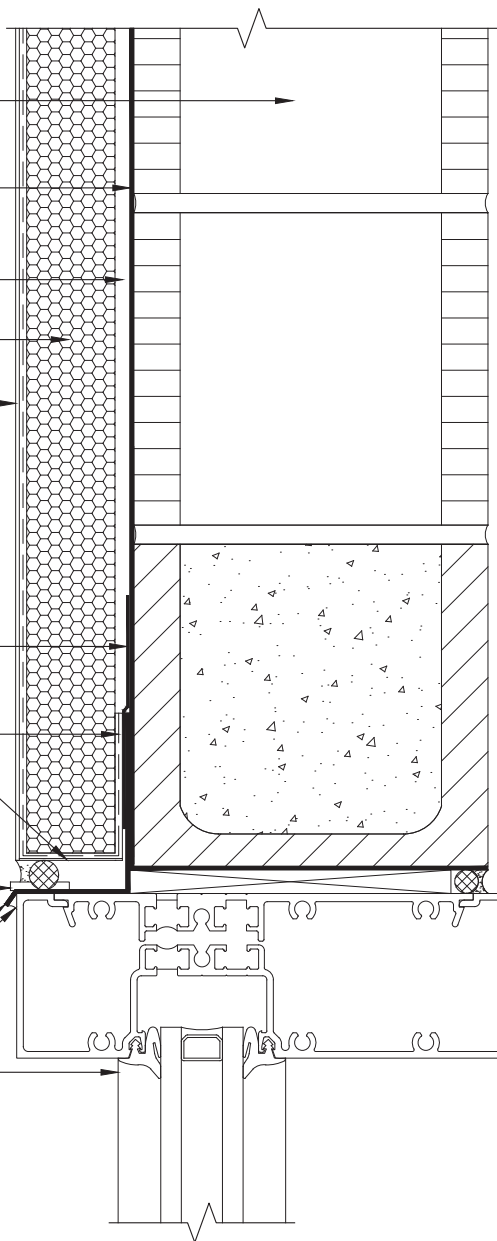
BASF COLOR COAT

BACKER ROD & SEALANT W/
WEEP TUBES AT MAX .16" O.C.*

FLASHING*

SEALANT*

WINDOW*



*BY OTHERS

NOTE: WRAP SENERSHIELD-R/ -RS/ -VB INTO ROUGH
OPENING ON HEAD IF ALSO INTENDED TO BE
AN AIR BARRIER.

REV 180205

TYPICAL WINDOW HEAD (FLUSH) WITH WEEP TUBES SENERGY CHanneled Adhesive CI DESIGN

SCALE: NTS

18

Structure, substrates, flashing, and other items which are not part of the BASF SENERGY *Channeled Adhesive CI Design* system are the responsibility of others. This detail is subject to change without notice. BASF Corporation - Wall Systems (herein after BASF Wall Systems) accepts no liability for the end use of this detail. For conditions not shown, consult BASF Wall Systems for review of specific detail.

BASF
We create chemistry

CMU*

SENERSHIELD-R/SENERSHIELD-RS/
SENERSHIELD-VB

SENERGY ADHESIVE/ BASE COAT
APPLIED TO EPS INSULATION BOARD

APPROVED EPS INSULATION BOARD

MAXFLASH, SHEATHING FABRIC
EMBEDDED IN SENERSHIELD-R; -RS; -VB,
OR WS FLASH 9 W/ FLASHING PRIMER

J-BEAD*

SENERGY LAMINA:
SENERGY BASE COAT
SENERGY REINFORCING MESH
SENERGY FINISH COAT

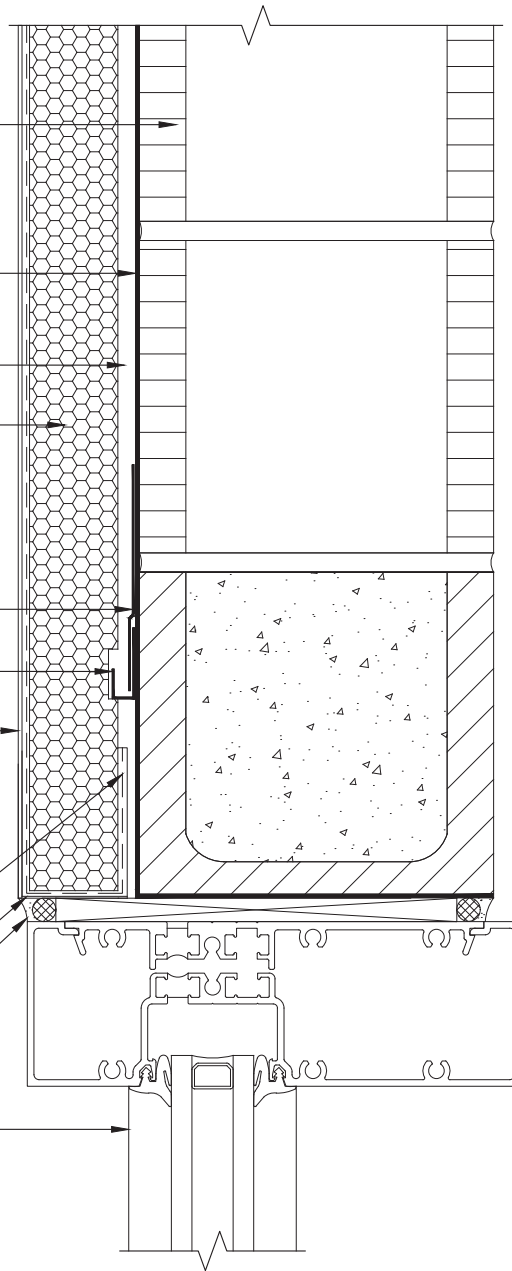
WRAP SENERGY BASE COAT AND
SENERGY REINFORCING MESH

BASF COLOR COAT

BACKER ROD & SEALANT W/
WEEP TUBES AT MAX .16" O.C.*

WINDOW*

*BY OTHERS



NOTE: WRAP SENERSHIELD-R/ -RS/ -VB INTO ROUGH
OPENING ON HEAD IF ALSO INTENDED TO BE
AN AIR BARRIER.

REV 180205

TYPICAL WINDOW HEAD (FLUSH) WITH DIVERTER TRACK SENERGY CHanneLED ADHESIVE CI DESIGN

SCALE: NTS

19

Structure, substrates, flashing, and other items which are not part of the BASF SENERGY *Channeled Adhesive CI Design* system are the responsibility of others. This detail is subject to change without notice. BASF Corporation - Wall Systems (herein after BASF Wall Systems) accepts no liability for the end use of this detail. For conditions not shown, consult BASF Wall Systems for review of specific detail.

BASF
We create chemistry

CMU*

SENERSHIELD-R/SENERSHIELD-VB/
SENERSHIELD-RS

SENERGY ADHESIVE/BASE COAT
APPLIED TO EPS INSULATION BOARD

APPROVED EPS INSULATION BOARD

SENERGY LAMINA:
SENERGY BASE COAT
SENERGY REINFORCING MESH
SENERGY FINISH COAT

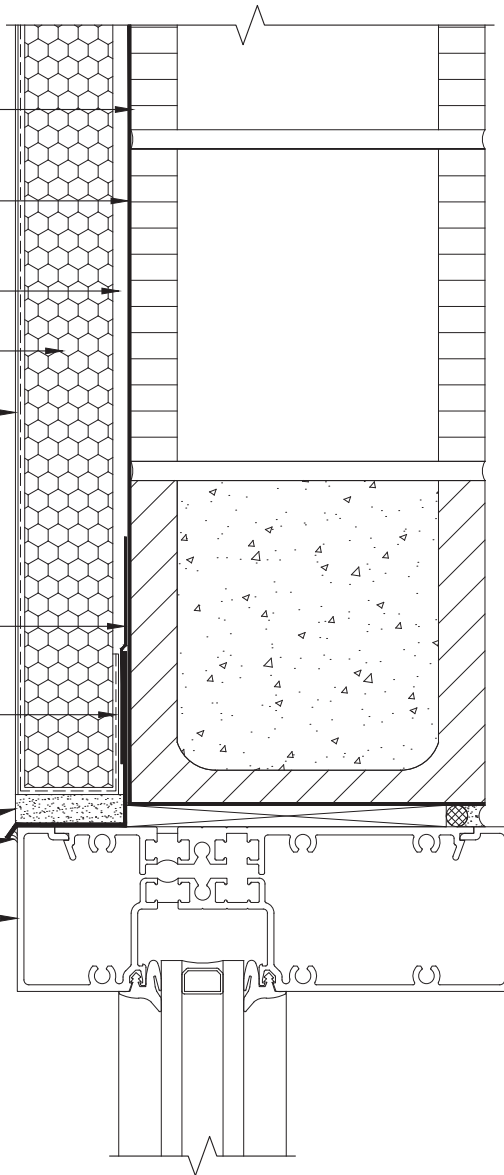
MAXFLASH, SHEATHING FABRIC
EMBEDDED IN SEENERSHIELD-R; -RS; -VB,
OR WS FLASH 4 W/ FLASHING PRIMER

WRAP SENERGY BASE COAT AND
SENERGY REINFORCING MESH

ACCEPTABLE SEALANT*

WINDOW*

*BY OTHERS



REV 180205

TYPICAL WINDOW HEAD FLASHING W/ SEALANT END DAM SENERGY CHanneled Adhesive CI Design

SCALE: NTS

20

Structure, substrates, flashing, and other items which are not part of the BASF SENERGY *Channeled Adhesive CI Design* system are the responsibility of others. This detail is subject to change without notice. BASF Corporation - Wall Systems (herein after BASF Wall Systems) accepts no liability for the end use of this detail. For conditions not shown, consult BASF Wall Systems for review of specific detail.

BASF
We create chemistry

CMU*

EPS INSULATION BOARD

ADHESIVE / BASE COAT APPLIED TO
EPS INSULATION BOARD

SENERSHIELD-R/SENERSHIELD-RS/
SENERSHIELD-VB

SENERGY LAMINA:
SENERGY BASE COAT
SENERGY REINFORCING MESH
SENERGY FINISH COAT

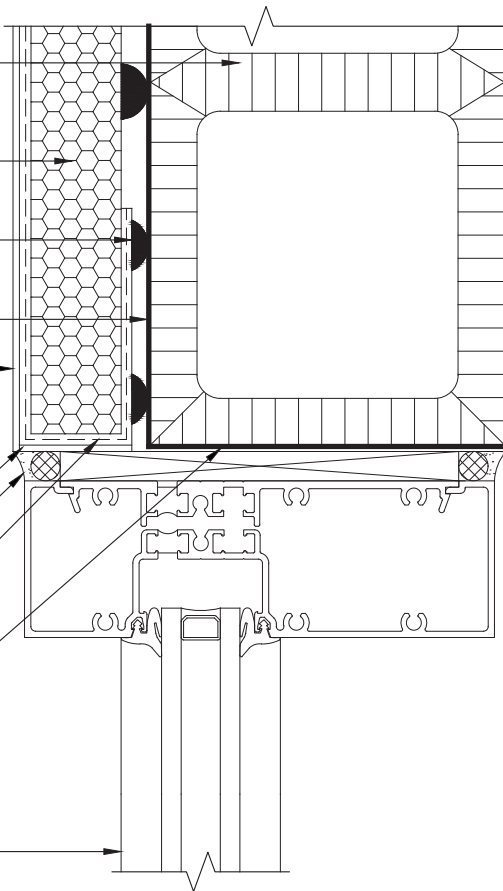
BASF COLOR COAT

BACKER ROD AND SEALANT*

WRAP SENERGY BASE COAT AND
SENERGY REINFORCING MESH

MAXFLASH, SHEATHING FABRIC
EMBEDDED IN SENERSHIELD-R;-RS;-VB, OR
WS FLASH w/ FLASHING PRIMER

WINDOW*



*BY OTHERS

REV 180205

TYPICAL WINDOW JAMB (FLUSH) SENERGY CHANNELED ADHESIVE CI DESIGN

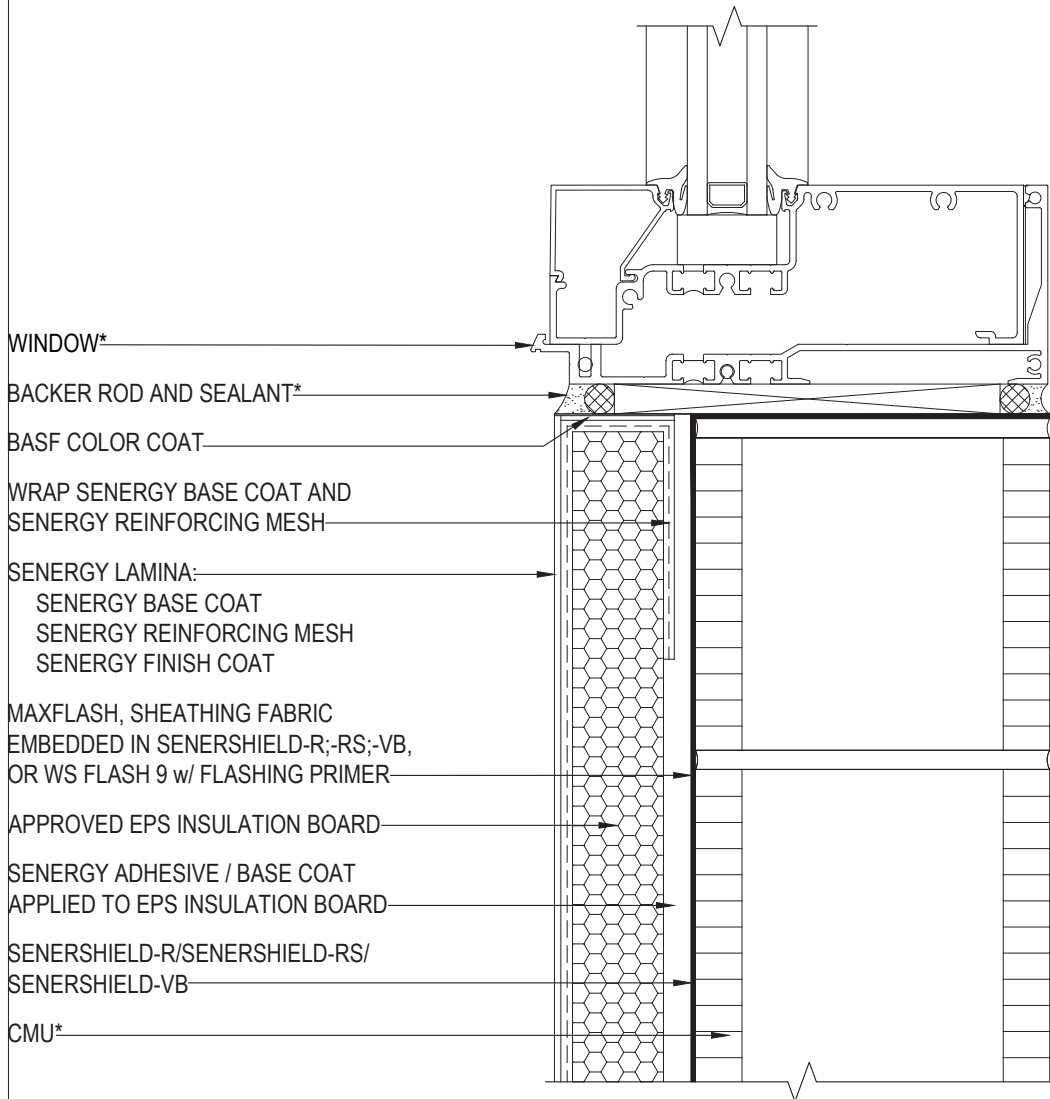
SCALE: NTS

21

Structure, substrates, flashing, and other items which are not part of the BASF SENERGY *Channeled Adhesive CI Design* system are the responsibility of others. This detail is subject to change without notice. BASF Corporation - Wall Systems (herein after BASF Wall Systems) accepts no liability for the end use of this detail. For conditions not shown, consult BASF Wall Systems for review of specific detail.

■ - BASF

We create chemistry



WINDOW*

BACKER ROD AND SEALANT*

BASF COLOR COAT

WRAP SENERGY BASE COAT AND
SENERGY REINFORCING MESH

SENERGY LAMINA:
SENERGY BASE COAT
SENERGY REINFORCING MESH
SENERGY FINISH COAT

MAXFLASH, SHEATHING FABRIC
EMBEDDED IN SENERSHIELD-R;-RS;-VB,
OR WS FLASH 9 w/ FLASHING PRIMER

APPROVED EPS INSULATION BOARD

SENERGY ADHESIVE / BASE COAT
APPLIED TO EPS INSULATION BOARD

SENERSHIELD-R/SENERSHIELD-RS/
SENERSHIELD-VB

CMU*

*BY OTHERS

REV 180205

TYPICAL WINDOW SILL DETAIL (FLUSH) SENERGY CHANNELED ADHESIVE CI DESIGN

SCALE: NTS

22

Structure, substrates, flashing, and other items which are not part of the BASF SENERGY *Channeled Adhesive CI Design* system are the responsibility of others. This detail is subject to change without notice. BASF Corporation - Wall Systems (herein after BASF Wall Systems) accepts no liability for the end use of this detail. For conditions not shown, consult BASF Wall Systems for review of specific detail.

BASF
We create chemistry

FRAMING*

SENERSHIELD-R/SENERSHIELD-RS/
SENERSHIELD-VB

SENERGY ADHESIVE / BASE COAT
APPLIED TO EPS INSULATION

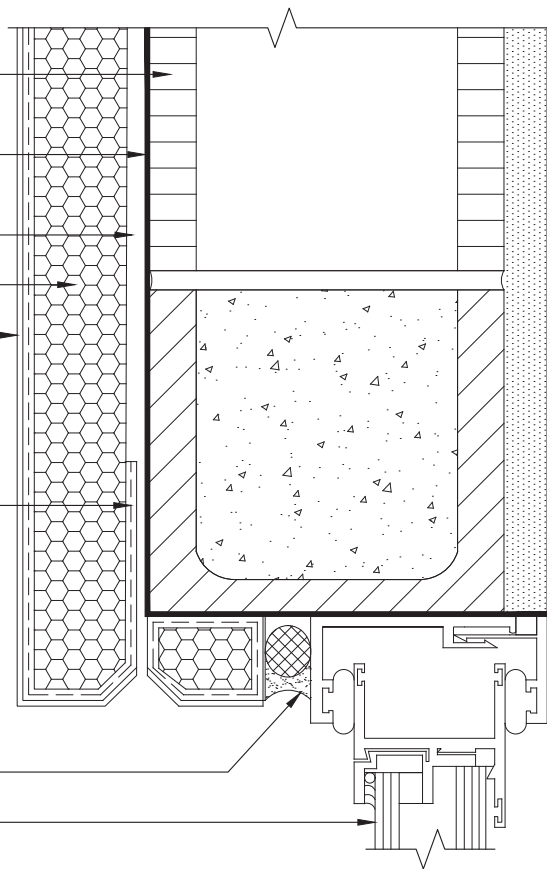
APPROVED EPS INSULATION BOARD

SENERGY LAMINA:
SENERGY BASE COAT
SENERGY REINFORCING MESH
SENERGY FINISH COAT

WRAP SENERGY BASE COAT AND
SENERGY REINFORCING MESH

BACKER ROD AND SEALANT*

WINDOW*



*BY OTHERS

NOTE: WRAP SENERSHIELD-R/ -RS/ -VB INTO ROUGH
OPENING ON HEAD IF ALSO INTENDED TO BE
AN AIR BARRIER.

REV 180205

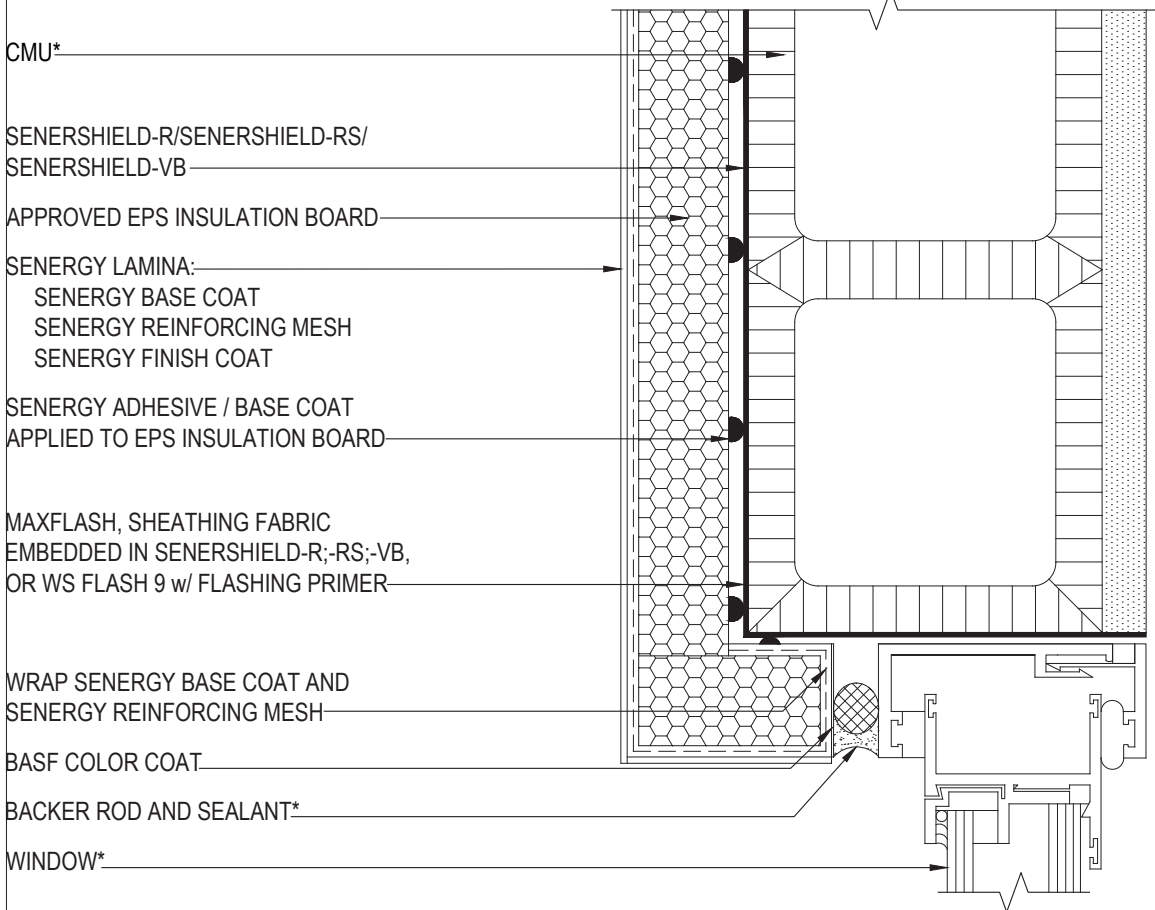
TYPICAL WINDOW HEAD (RECESSED) SENERGY CHANNELED ADHESIVE CI DESIGN

SCALE: NTS

23

Structure, substrates, flashing, and other items which are not part of the BASF SEENERGY *Channeled Adhesive CI Design* system are the responsibility of others. This detail is subject to change without notice. BASF Corporation - Wall Systems (herein after BASF Wall Systems) accepts no liability for the end use of this detail. For conditions not shown, consult BASF Wall Systems for review of specific detail.

BASF
We create chemistry



CMU*

SENERGY LAMINA:
SENERGY BASE COAT
SENERGY REINFORCING MESH
SENERGY FINISH COAT

SENERGY ADHESIVE / BASE COAT
APPLIED TO EPS INSULATION BOARD

MAXFLASH, SHEATHING FABRIC
EMBEDDED IN SENERGY LAMINA,
OR WS FLASH 9 w/ FLASHING PRIMER

WRAP SENERGY BASE COAT AND
SENERGY REINFORCING MESH

BASF COLOR COAT

BACKER ROD AND SEALANT*

WINDOW*

*BY OTHERS

REV 180205

TYPICAL WINDOW JAMB (RECESSED) SENERGY CHanneLED ADHESIVE CI DESIGN

SCALE: NTS

24

Structure, substrates, flashing, and other items which are not part of the BASF SENERGY *Channeled Adhesive CI Design* system are the responsibility of others. This detail is subject to change without notice. BASF Corporation - Wall Systems (herein after BASF Wall Systems) accepts no liability for the end use of this detail. For conditions not shown, consult BASF Wall Systems for review of specific detail.

■ - BASF

We create chemistry

WINDOW*

MAXFLASH, SHEATHING FABRIC
EMBEDDED IN SENERSHIELD-R;-RS;-VB, OR
WS FLASH 9 W/ FLASHING PRIMER

PAN FLASHING W/ END DAMS*

WRAP SENERGY BASE COAT AND
SENERGY REINFORCING MESH

APPROVED EPS INSULATION BOARD

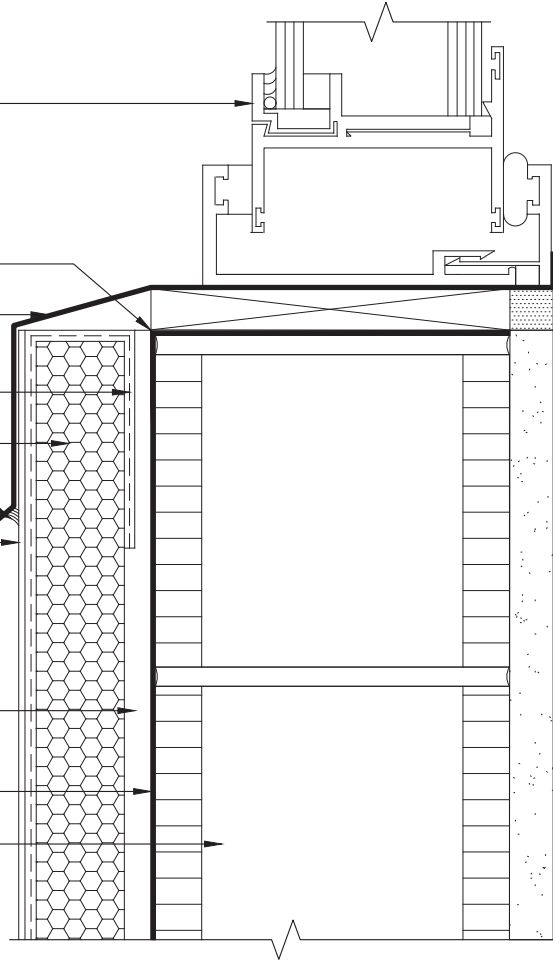
SEALANT*

SENERGY LAMINA:
SENERGY BASE COAT
SENERGY REINFORCING MESH
SENERGY FINISH COAT

SENERGY ADHESIVE/ BASE COAT
APPLIED TO EPS INSULATION BOARD

SENERSHIELD-R/SENERSHIELD-RS/
SENERSHIELD-VB

CMU*



*BY OTHERS

NOTE:

- EXTEND FLASHING MIN 2" (50 mm)
OVER CHanneled ADHESIVE CI DESIGN
- FLASHINGS ARE BY OTHERS AND
SHALL BE AS PER DESIGN /
CODE REQUIREMENT

REV 180205

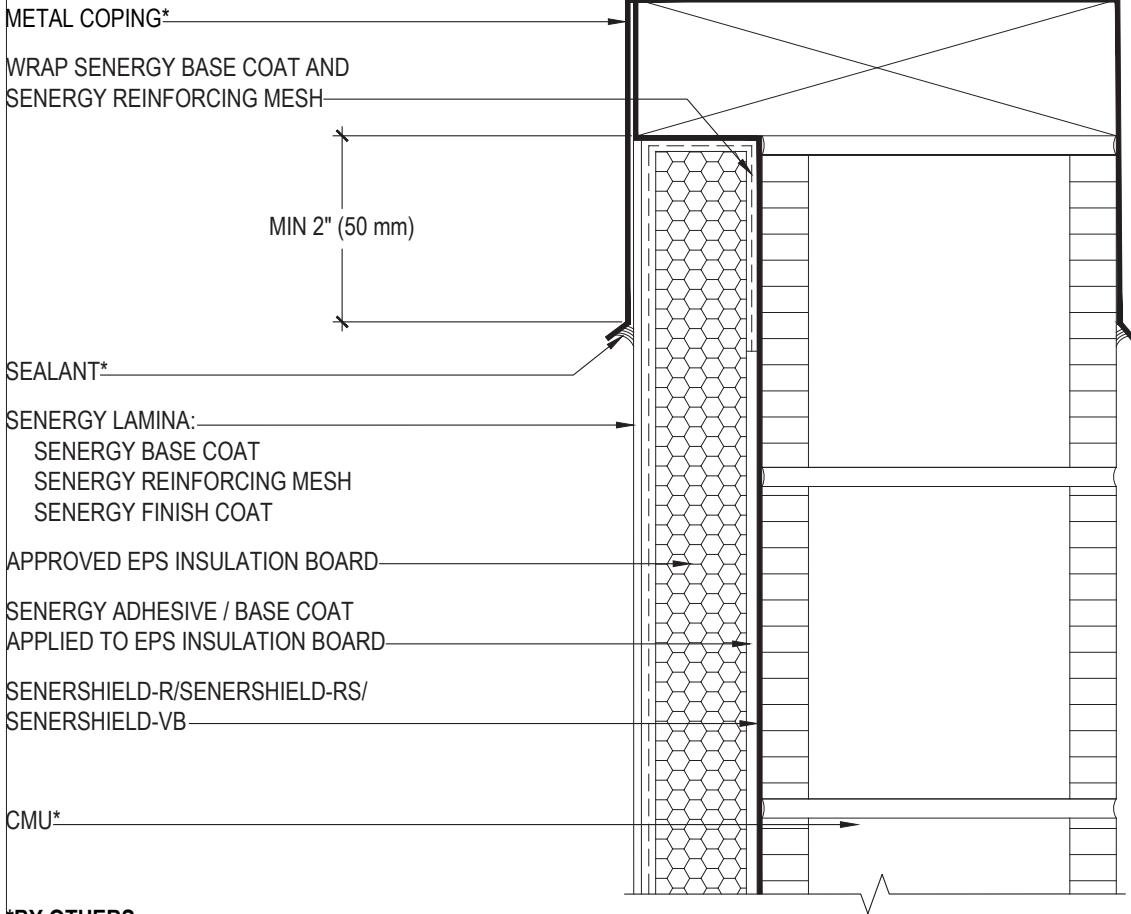
TYPICAL WINDOW SILL DETAIL (RECESSED) SENERGY CHanneled ADHESIVE CI DESIGN

SCALE: NTS

25

Structure, substrates, flashing, and other items which are not part of the BASF SENERGY *Channeled Adhesive CI Design* system are the responsibility of others. This detail is subject to change without notice. BASF Corporation - Wall Systems (herein after BASF Wall Systems) accepts no liability for the end use of this detail. For conditions not shown, consult BASF Wall Systems for review of specific detail.


We create chemistry



*BY OTHERS

REV 180205

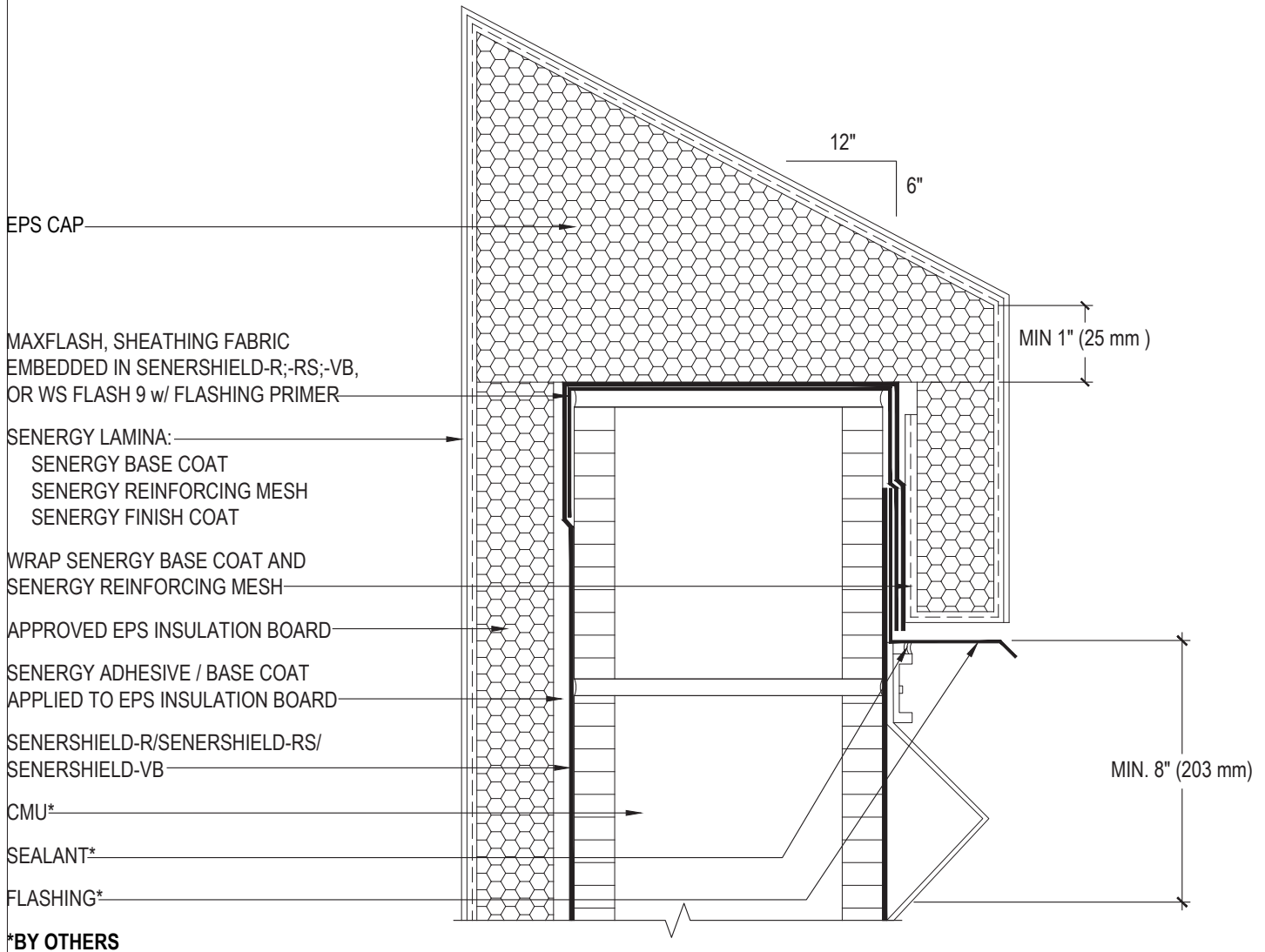
TYPICAL METAL COPING DETAIL

SENERGY CHanneled ADHESIVE CI DESIGN

SCALE: NTS
28

Structure, substrates, flashing, and other items which are not part of the BASF SENERGY *Channeled Adhesive CI Design* system are the responsibility of others. This detail is subject to change without notice. BASF Corporation - Wall Systems (herein after BASF Wall Systems) accepts no liability for the end use of this detail. For conditions not shown, consult BASF Wall Systems for review of specific detail.





REV 180205

TYPICAL PARAPET CAP DETAIL

SENERGY CHanneLED ADHESIVE CI DESIGN

SCALE: NTS

29

Structure, substrates, flashing, and other items which are not part of the BASF SENERGY *Channeled Adhesive CI Design* system are the responsibility of others. This detail is subject to change without notice. BASF Corporation - Wall Systems (herein after BASF Wall Systems) accepts no liability for the end use of this detail. For conditions not shown, consult BASF Wall Systems for review of specific detail.

■ - BASF

We create chemistry

CMU*

SENERSHIELD-R/SENERSHIELD-RS/
SENERSHIELD-VB

MAXFLASH, SHEATHING FABRIC
EMBEDDED IN SENERSHIELD-R; -RS; -VB,
OR WS FLASH 4 W/ FLASHING PRIMER

WRAP SENERGY BASE COAT AND
SENERGY REINFORCING MESH

SENERGY ADHESIVE/ BASE COAT
APPLIED TO EPS INSULATION BOARD

BACKER ROD & SEALANT*

APPROVED EPS INSULATION BOARD

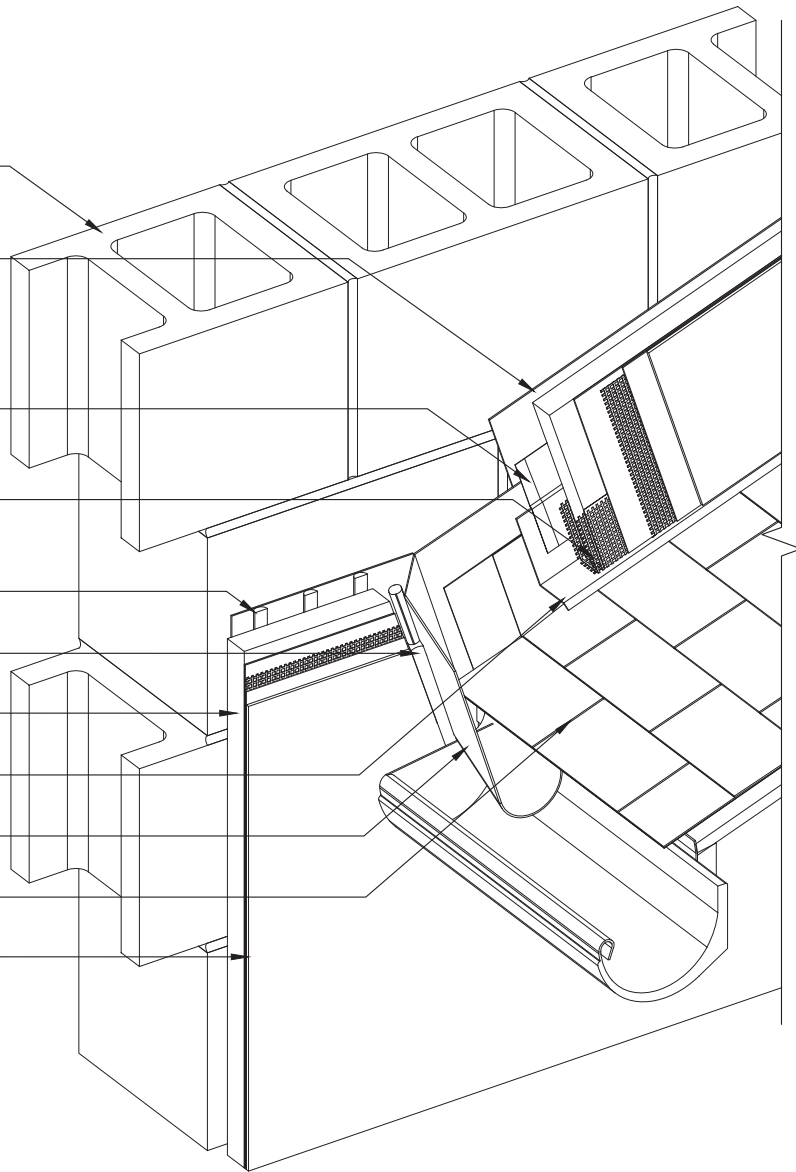
STEP FLASHING*

KICK-OUT FLASHING*

ROOF SHINGLES*

SENERGY LAMINA:
SENERGY BASE COAT
SENERGY REINFORCING MESH
SENERGY FINISH COAT

*BY OTHERS



REV 180205

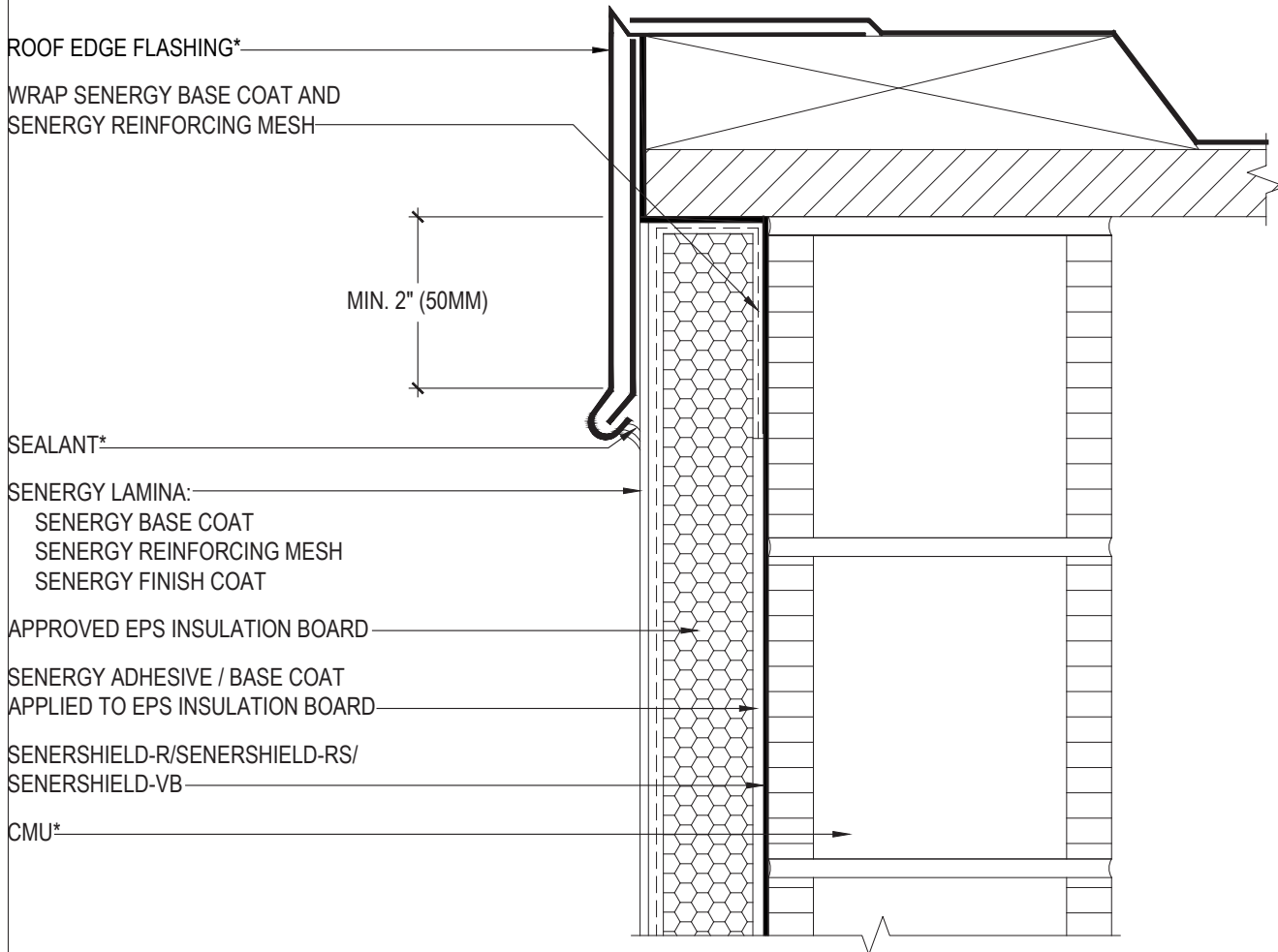
TYPICAL KICK-OUT FLASHING SENERGY CHanneled Adhesive CI DESIGN

SCALE: NTS

30

Structure, substrates, flashing, and other items which are not part of the BASF SENERGY *Channeled Adhesive CI Design* system are the responsibility of others. This detail is subject to change without notice. BASF Corporation - Wall Systems (herein after BASF Wall Systems) accepts no liability for the end use of this detail. For conditions not shown, consult BASF Wall Systems for review of specific detail.


We create chemistry



SEALANT*

SENERGY LAMINA:
SENERGY BASE COAT
SENERGY REINFORCING MESH
SENERGY FINISH COAT

APPROVED EPS INSULATION BOARD

SENERGY ADHESIVE / BASE COAT
APPLIED TO EPS INSULATION BOARD

SENERSHIELD-R/SENERSHIELD-RS/
SENERSHIELD-VB

CMU*

*BY OTHERS

REV 180205

TYPICAL ROOF EDGE FLASHING DETAIL SENERGY CHanneled ADHESIVE CI DESIGN

SCALE: NTS

31

Structure, substrates, flashing, and other items which are not part of the BASF SENERGY *Channeled Adhesive CI Design* system are the responsibility of others. This detail is subject to change without notice. BASF Corporation - Wall Systems (herein after BASF Wall Systems) accepts no liability for the end use of this detail. For conditions not shown, consult BASF Wall Systems for review of specific detail.

BASF
We create chemistry

RAILING*

RAILING BASE COVER SET IN SEALANT*

BACKER ROD & SEALANT*

SENERGY LAMINA:
SENERGY BASE COAT
SENERGY REINFORCING MESH
SENERGY FINISH COAT

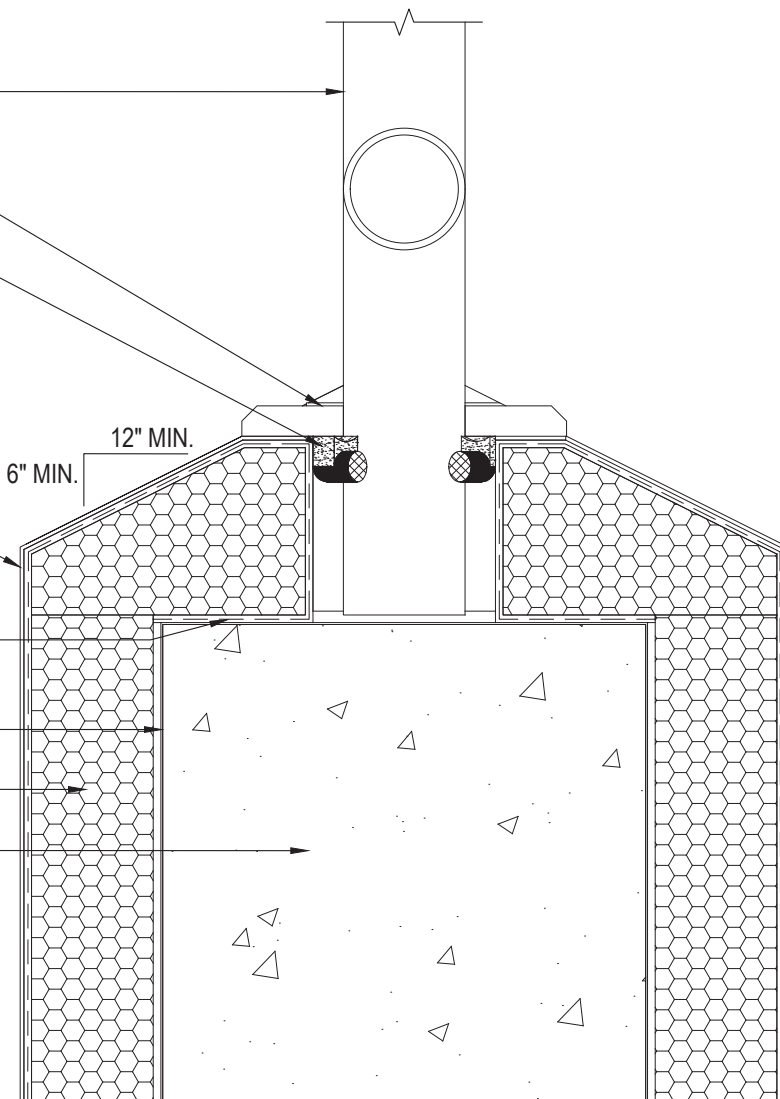
WRAP SENERGY BASE COAT AND
SENERGY REINFORCING MESH

SENERSHIELD-R/SENERSHIELD-RS/
SENERSHIELD-VB

APPROVED EPS INSULATION BOARD

ACCEPTABLE SUBSTRATE*

*BY OTHERS



REV 180205

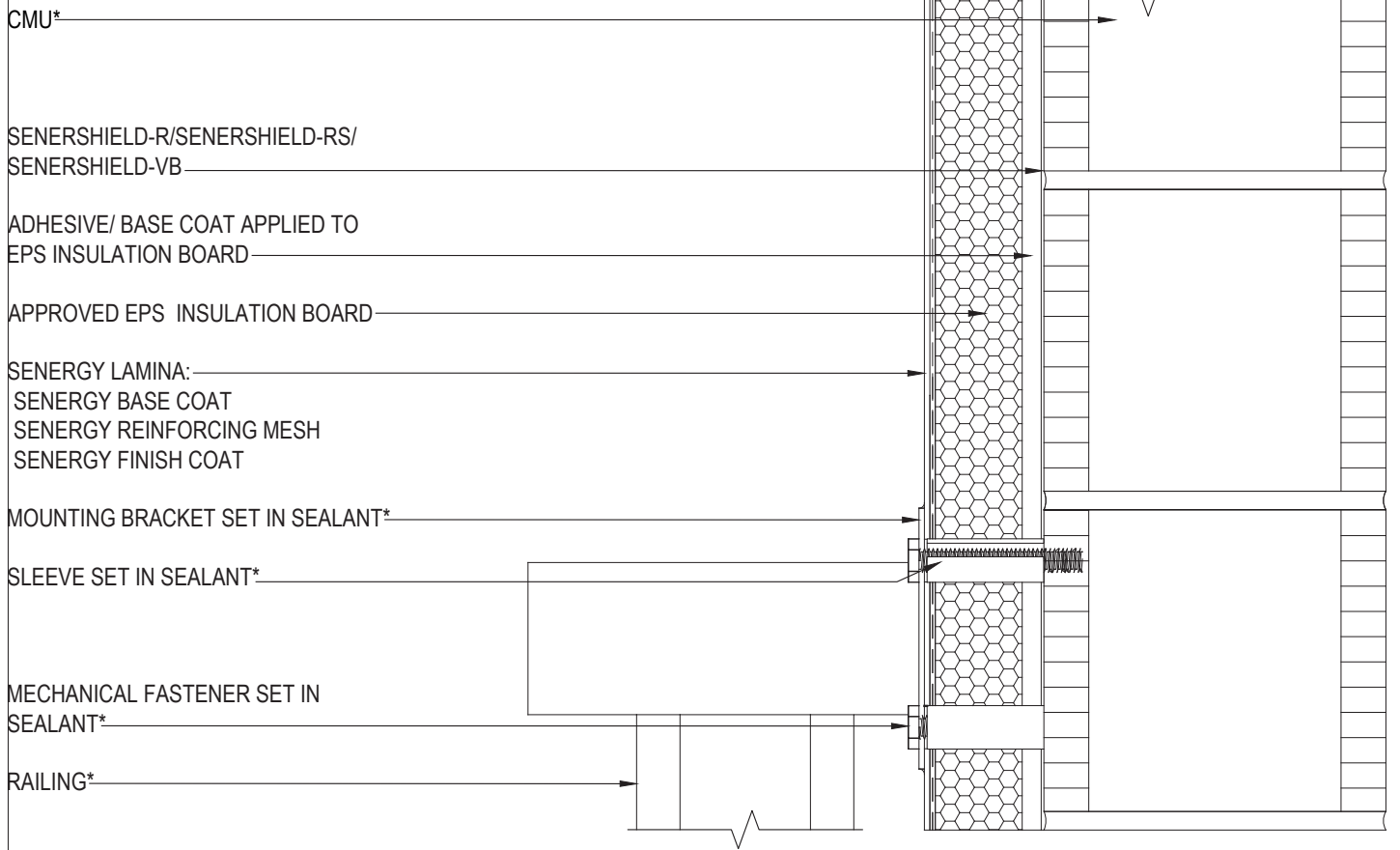
TYPICAL CORE MOUNTED RAILING ATTACHMENT SENERGY CHanneled Adhesive CI DESIGN

SCALE: NTS

33

Structure, substrates, flashing, and other items which are not part of the BASF SENERGY *Channeled Adhesive CI Design* system are the responsibility of others. This detail is subject to change without notice. BASF Corporation - Wall Systems (herein after BASF Wall Systems) accepts no liability for the end use of this detail. For conditions not shown, consult BASF Wall Systems for review of specific detail.

BASF
We create chemistry



*BY OTHERS

REV 180205

TYPICAL RAILING ATTACHMENT SENERGY CHanneled ADHESIVE CI DESIGN

SCALE: NTS

34

Structure, substrates, flashing, and other items which are not part of the BASF SENERGY *Channeled Adhesive CI Design* system are the responsibility of others. This detail is subject to change without notice. BASF Corporation - Wall Systems (herein after BASF Wall Systems) accepts no liability for the end use of this detail. For conditions not shown, consult BASF Wall Systems for review of specific detail.

BASF
We create chemistry

CMU*

SENERSHIELD-R/SENERSHIELD-RS/
SENERSHIELD-VB

ADHESIVE/ BASE COAT APPLIED TO
EPS INSULATION BOARD

APPROVED EPS INSULATION BOARD

SENERGY LAMINA:
SENERGY BASE COAT
SENERGY REINFORCING MESH
SENERGY FINISH COAT

SIGN*

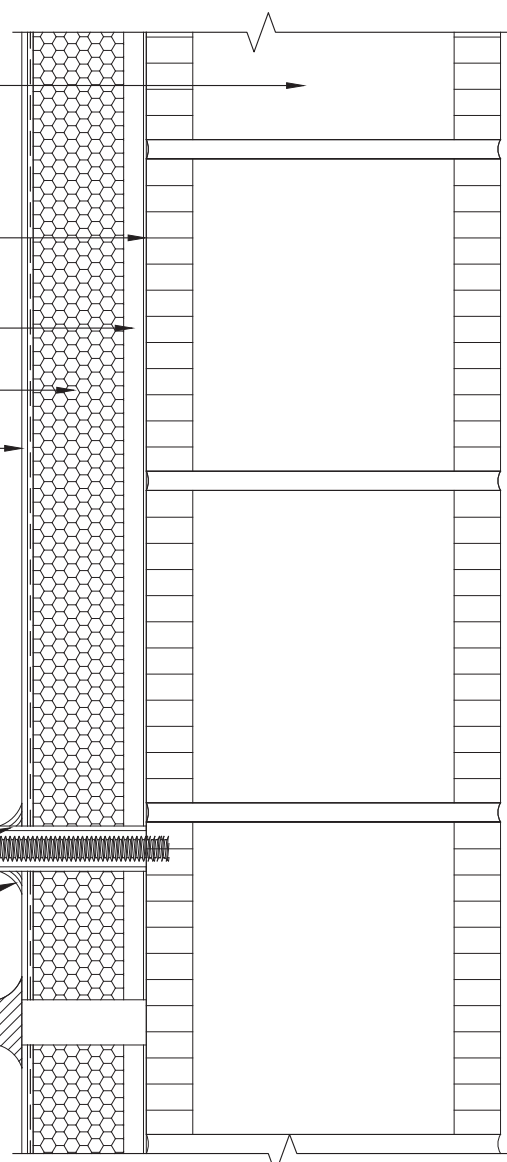
SLEEVE SET IN SEALANT*

SEALANT AT PERIMETER OF
PENETRATION*

MOUNTING BRACKET*

MECHANICAL FASTENER SET IN
SEALANT*

WASHER*



*BY OTHERS

REV 180205

TYPICAL SIGN ATTACHMENT

SENERGY CHanneLED ADHESIVE CI DESIGN

SCALE: NTS

35

Structure, substrates, flashing, and other items which are not part of the BASF SENERGY *Channeled Adhesive CI Design* system are the responsibility of others. This detail is subject to change without notice. BASF Corporation - Wall Systems (herein after BASF Wall Systems) accepts no liability for the end use of this detail. For conditions not shown, consult BASF Wall Systems for review of specific detail.

BASF
We create chemistry

Master Builders Solutions
Construction Systems US, LLC
889 Valley Park Drive
Shakopee, MN 55379 USA

Customer Service (800) 433-9517
Technical Service (800) 589-1336
seenergy.master-builders-solutions.com/en



® registered trademark of a Group member in many countries of the world

© 2022 MBCC Group, 180205 rev 08/2022

LIMITED WARRANTY NOTICE: Master Builders Solutions Construction Systems US, LLC ("Master Builders") warrants this product to be free from manufacturing defects and to meet the technical properties on the current Technical Data Guide, if used as directed within shelf life. Satisfactory results depend not only on quality products but also upon many factors beyond our control. Master Builders **MAKES NO OTHER WARRANTY OR GUARANTEE, EXPRESS OR IMPLIED, INCLUDING WARRANTIES OF MERCHANTABILITY OR FITNESS FOR A PARTICULAR PURPOSE WITH RESPECT TO ITS PRODUCTS.** The sole and exclusive remedy of Purchaser for any claim concerning this product, including but not limited to, claims alleging breach of warranty, negligence, strict liability or otherwise, is shipment to purchaser of product equal to the amount of product that fails to meet this warranty or refund of the original purchase price of product that fails to meet this warranty, at the sole option of Master Builders. Any claims concerning this product must be received in writing within one (1) year from the date of shipment and any claims not presented within that period are waived by Purchaser. Master Builders **WILL NOT BE RESPONSIBLE FOR ANY SPECIAL, INCIDENTAL, CONSEQUENTIAL (INCLUDING LOST PROFITS) OR PUNITIVE DAMAGES OF ANY KIND.**

Purchaser must determine the suitability of the products for the intended use and assumes all risks and liabilities in connection therewith. This information and all further technical advice are based on Master Builders present knowledge and experience. However, Master Builders assumes no liability for providing such information and advice including the extent to which such information and advice may relate to existing third party intellectual property rights, especially patent rights, nor shall any legal relationship be created by or arise from the provision of such information and advice. Master Builders reserves the right to make any changes according to technological progress or further developments. The Purchaser of the Product(s) must test the product(s) for suitability for the intended application and purpose before proceeding with a full application of the product(s). Performance of the product described herein should be verified by testing and carried out by qualified experts.