

## PRODUCT DATA SHEET

# Senerbrick

### *Brick finish application technique*

#### **COLORS**

Mortar color and brick colors are achieved by using any of 128 standard colors or custom colored finishes.

#### **PACKAGING**

Templates are 3 feet wide x 200 feet long rolls.

#### **COVERAGE PER PAIL**

Finish coverage varies depending upon the finish, template selected and application technique.

#### **VOC**

0.22-0.31 lbs/gal (26-37 g/l) less water and exempt solvents.

#### **SHELF LIFE**

Two (2) years when properly stored in original container.



#### **DESCRIPTION**

The look of brick and benefits of EIFS can be achieved by using brick finish techniques that utilize special templates and Senergy Acrylic Finishes. SenerBrick surfaces yield the appearance of a wide variety of brick veneers over any Senergy wall system or other approved substrates, including prepared interior gypsum wallboard, precast or CMU and insulating concrete forms (ICFs).

#### **PREPARATION**

Follow Senergy specifications for the installation of the components that are required prior to the finish coat. When the base coat has dried (approximately 24 hours), proceed as follows to achieve brick appearance. For application over other substrates, consult the Sika Facades Technical Service Department

#### **MIXING**

Thoroughly mix the factory-prepared finish with a mixer to a homogeneous consistency. A small amount of clean potable water may be added to adjust workability. Additives are not permitted. Close container when not in use. Clean tools with soap and water immediately.



1. Start by laying out the brick template design on the ground to mimic the project drawings. Then, cut the template to working lengths and lay it flat with the release tape facing upward on a clean surface. Lay a 2x4 that is 40" long along the width of one end of the template. Pull a portion of the release tape up so it can be wrapped around the 2x4 (as shown in this photo). Once you get the release tape started, rolling the 2x4 across the template will assist you in removing the release tape uniformly.



2. Once the release tape has been removed, with the assistance of a couple of helpers, place the template against the wall aligning the template to the predetermined layout line.



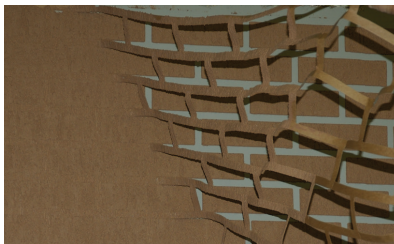
3. Immediately use a clean stainless steel trowel to push the template firmly against the prepared wall surface. Avoid snagging the template with the trowel.

*Work within limited areas until you get the feel for how much area you can control comfortably.*

*Do not apply more template than you will be able to finish within a couple of hours.*



4. Once the template is secured, trowel the finish diagonally across the template and wall surface. The diagonal method helps to minimize the amount of finish that is pushed under the template. Immediately double back and remove the finish down to the surface of the template. Immediately begin to float the finish with a plastic float in either random or vertical float actions. It is not critical to make the texture perfect. Irregularities actually make the finish look more realistic.

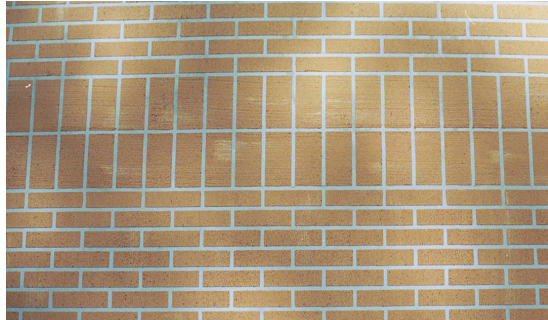


5. As soon as the texturing is complete, remove the template. Pull the template outward, perpendicular to the wall before the finish begins to dry. This technique helps to keep the edges clean and sharp looking.



6. The finished look.

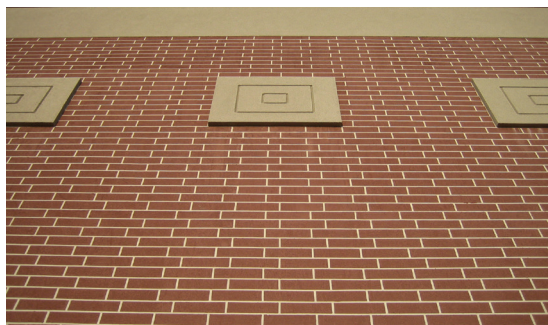
**NOTE: If you are looking for a distressed color appearance, lightly spray our AnticoGlaze CS (darker contrasting colors of AnticoGlaze CS work better) randomly onto the finish surface prior to the finish float (Step 4)- before you remove the template. Float the AnticoGlaze CS lightly and briefly to avoid pushing the AnticoGlaze CS into the finish.**



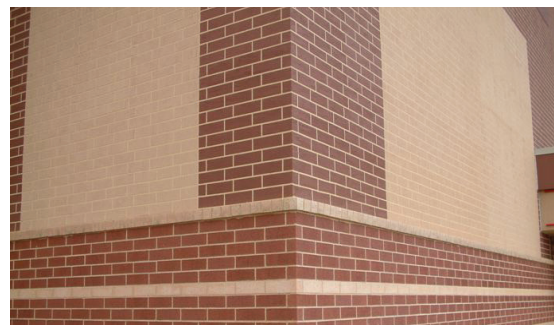
A simple running bond appearance with a sailor bond interval.



The block, accent medallion and running bond appearance (with darker stretcher bond accent rows), are all done in EIFS.



A raking stretcher bond appearance with finished foam shapes to accentuate the wall.



Variations in the brick's color and positioning create endless design options.

---

#### **APPLICATION**

##### MORTAR COLOR APPLICATION:

The SenerBrick "mortar" color is achieved by trowel applying Senergy Texture Finish over the base coat and floating with a hard trowel or plastic float to a smooth, uniform consistency. Allow approximately 24 hours to dry.

##### APPLICATION OF THE BRICK TEMPLATE:

The brick template is a waxed paper with peel-and-stick backing. The template is applied in a running bond pattern over the dried finish that supplies the mortar color. Templates can be matched up easily at the vertical and horizontal ends to continue the selected pattern on large walls. Templates should be applied only to areas that will be completed that day.

##### APPLICATION OF THE BRICK FINISH:

The "brick" color is achieved by trowel applying Senergy Senerflex Classic Finish over the template and then sponging or

using a plastic float to float the finish to a uniform consistency. While the finish coat is still wet, the template is carefully peeled away, revealing the underlying mortar color and creating the veneer brick pattern. Other Senerflex finishes such as Sahara, Fine and Texture may be used depending on the type of brick texture desired.

---

#### **DRY TIME**

Under average conditions [70 °F (21 °C), 50% Relative Humidity] finish will be dry within 24 hours. Drying time is dependent on humidity, air temperature, sun exposure, surface conditions and finish thickness. Lower temperature, higher humidity and application in shaded areas will extend drying time. Protect finish from rain or other precipitation and temperatures less than 40°F (4°C) for a minimum of 24 hours or until dry.

---

#### **LIMITATIONS**

Do not use on flat horizontal surfaces exposed to weather. Sloped surfaces must have a minimum slope of 6:12. Senergy Finishes are not recommended for large sloping surfaces. Apply only when ambient and substrate temperatures will be at least 4 °C (40 °F) and higher for at least 24 hours. Do not apply in direct sunlight. Applying in sunlight may result in cold joints or color variations. Protect from rain for at least 24 hours.

\*Do not apply directly to exterior sheathing.

\*Always create a mock up to demonstrate the final appearance of the finished product.



---

**TECHNICAL SUPPORT**

Consult Sika Facades Technical Services Department at **+1 (800) 589-1336** for specific recommendations concerning all other applications. Consult the Sika Facades website at [usa.sika.com/senergy](http://usa.sika.com/senergy), for additional information about products and systems and for updated literature.

---

**HEALTH, SAFETY AND ENVIRONMENTAL**

Read, understand and follow all Safety Data Sheets and product label information for this product prior to use. The SDS can be obtained by visiting [usa.sika.com/senergy](http://usa.sika.com/senergy), e-mailing your request to [mbsbscst@mbcc-group.com](mailto:mbsbscst@mbcc-group.com) or calling +1 (800) 433- 9517. Use only as directed.

**IN CASE OF EMERGENCY: Call CHEMTEL +1 (800) 255-3924 or if outside the US or Canada, +1 (813) 248-0585.**

---

**LIMITED WARRANTY NOTICE**

Prior to each use of any product of Sika Corporation, its subsidiaries or affiliates (“SIKA”), the user must always read and follow the warnings and instructions on the product’s most current product label, Product Data Sheet and Safety Data Sheet which are available at [usa.sika.com/senergy](http://usa.sika.com/senergy) or by calling our Technical Service Department at **+1 (800) 589-1336**.

Nothing contained in any SIKA literature or materials relieves the user of the obligation to read and follow the warnings and instructions for each SIKA product as set forth in the current product label, Product Data Sheet and Safety Data Sheet prior to use of the SIKA product.

SIKA warrants this product for one year from date of installation to be free from manufacturing defects and to meet the technical properties on the current Product Data Sheet if used as directed within the product’s shelf life. User determines suitability of product for intended use and assumes all risks. User’s and/or buyer’s sole remedy shall be limited to the purchase price or replacement of this product exclusive of any labor costs.

NO OTHER WARRANTIES EXPRESS OR IMPLIED SHALL APPLY INCLUDING ANY WARRANTY OF MERCHANTABILITY OR FITNESS FOR A PARTICULAR PURPOSE. SIKA SHALL NOT BE LIABLE UNDER ANY LEGAL THEORY FOR SPECIAL OR CONSEQUENTIAL DAMAGES. SIKA SHALL NOT BE RESPONSIBLE FOR THE USE OF THIS PRODUCT IN A MANNER TO INFRINGE ON ANY PATENT OR ANY OTHER INTELLECTUAL PROPERTY RIGHTS HELD BY OTHERS. Sale of SIKA products are subject to the Terms and Conditions of Sale which are available at [usa.sika.com](http://usa.sika.com) or by calling **+1 (800) 589-1336**.

The brick stencil source is:  
Artcrete, Inc.  
5812 Highway 494  
Natchitoches, LA 71457  
Contact: Frank Piccolo  
Phone: 318-379-2000

Download their catalog at [www.artcrete.com](http://www.artcrete.com).