



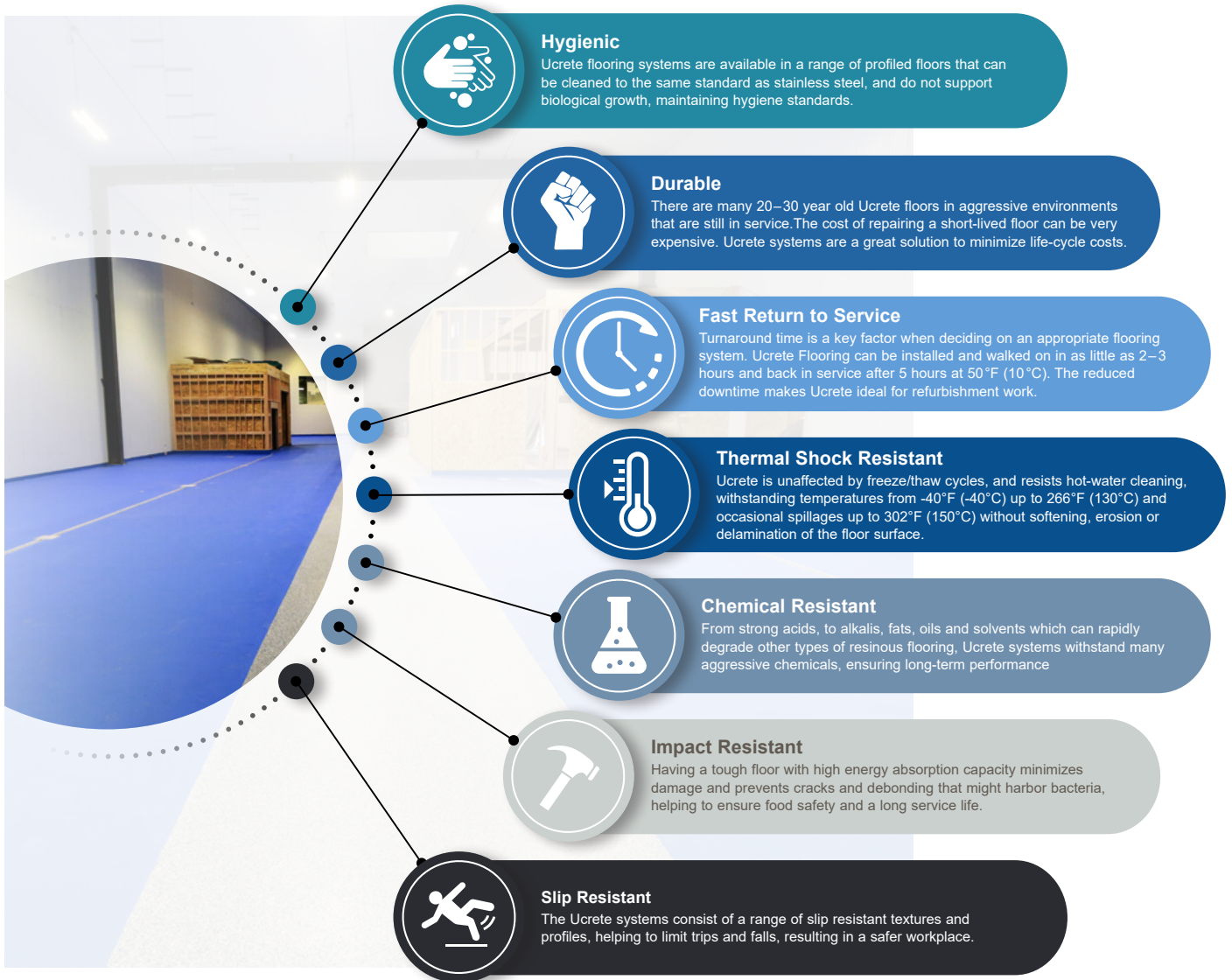
Ucrete
Flooring Systems
The World's Toughest
Cementitious
Urethane Technology



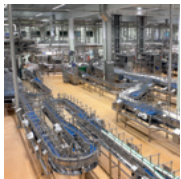
Ucrete® Flooring Systems

The World's Toughest Floor

Performing at the highest level. Ucrete is the original cementitious urethane technology designed for seamless, monolithic floor overlays and re-surfacing, and has been the solution to challenging industrial flooring problems around the world.



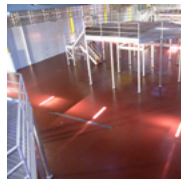
Ucrete Application Recommendations



Food and Beverage



Chemical Processing



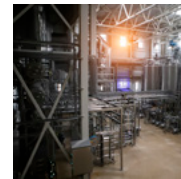
Industrial Facilities



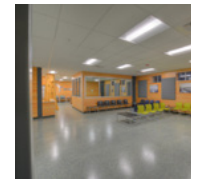
Pharmaceutical Production



Food Preparation



Bottling Plants & Brewhouses



Commercial Buildings

The Hygienic Flooring Solution

Performing at the highest level. Ucrete is the leading cementitious urethane solution, providing a hygienic and durable floor for years to come. This technology is **antimicrobial without the use of heavy metals or biocides**. If you are looking for the right flooring for your project, it is important to rely on expertise and reputation that have been built up over decades.



Antimicrobial

Ucrete does not support biological growth and is anti-microbial without the need for biocidal additives:

- Up to 99.99% reduction of bacteria at 24 hours when tested to ISO 22196, IMSL 2014
- No microbial regrowth at 72 hours after sanitation to standard method 14, German Association for Hygiene and Microbiology, Polymer Institute 2017



Certified Food Safe Flooring

Ucrete is safe for use in the food industry:

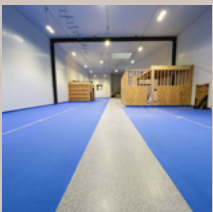
- Impervious, non-absorbent, washable and non-toxic to Regulation No 862/2004 on the Hygiene of foodstuffs.
- Accredited for use in food facilities, HACCP International
- Non-tainting from the end of mixing to EN 4120, Campden BRI



Cleanable as Stainless Steel

Ucrete has market leading bacterial cleanability:

- As cleanable on food contact surfaces as stainless steel, Campden BRI
- Dense and impervious with zero water absorption to CP.BM2/67/2, Campden BRI



Durability, Trusted Since 1969

Ucrete the toughest floor for over 50 years:

- Resistant to all commercial cleaning and sanitizing materials
- Fully steam cleanable
- Many floors are still in service after decades of use.

Ucrete Systems Comparison Chart

	Thickness	Priorities	Color	Finish, Texture	Chemical Resistance	Cleanability	UV Stability	Abrasion Resistance	Slip Resistance	Thermal Shock Resistance
Ucrete DP BC4 Self-leveling polyurethane concrete cement with neutral aggregate broadcast	3/16"	Function & Safety	Pigmented	Topcoat Dependent	Excellent	Excellent	Customizable	Varies	Customizable	Varies
Ucrete DP BC6 Self-leveling polyurethane concrete with neutral aggregate broadcast	1/4"	Function & Safety	Pigmented	Topcoat Dependent	Excellent	Excellent	Customizable	Varies	Customizable	Varies
Ucrete DP BC9 Self-leveling polyurethane concrete with neutral aggregate broadcast	3/8"	Function & Safety	Pigmented	Topcoat Dependent	Excellent	Excellent	Customizable	Varies	Customizable	Varies
Ucrete HP/Q Self-leveling polyurethane concrete with decorative colored quartz aggregate broadcast	3/16"–1/4"	Aesthetics & Safety	Color Quartz Aggregate	Topcoat Dependent	Excellent	Excellent	Customizable	Varies	Customizable	Varies
Ucrete HP/F Self-leveling polyurethane concrete with decorative vinyl chip broadcast	3/16"–1/4"	Aesthetics & Cleanability	Color Flake Aggregate	Topcoat Dependent	Excellent	Excellent	Customizable	Varies	Customizable	Varies
Ucrete CS Self-leveling polyurethane concrete with stain-resistant topcoat, Ucrete TCCS	3/16"–3/8"	Function & Aesthetics	Pigmented	Varies, Satin	Excellent	Excellent	Excellent	Excellent	Customizable	Excellent
Ucrete MF Medium duty, self-leveling, trowel-applied and back-rolled, polyurethane concrete	3/16"–1/4"	Cleanability & Function	Pigmented	Smooth, Matte	Excellent	Excellent	Varies	Varies	Smooth	Moderate
Ucrete HF60RT Heavy duty, self-leveling, rake and trowel-applied and back-rolled, polyurethane concrete	1/4"	Function & Time	Pigmented	Lightly textured	Excellent	Excellent	Varies	Excellent	Excellent	Excellent
Ucrete UD200 Heavy duty, textured, trowel-applied polyurethane concrete	1/4"–1/2"	Time & Temperature	Pigmented	Varies, Matte	Excellent	Excellent	Varies	Excellent	Excellent	Excellent
Ucrete UD200SR Heavy duty, trowel-applied, textured, polyurethane concrete. Ucrete UD200 with added slip resistance	1/4"–1/2"	Thermal Shock & Temperature	Pigmented	Varies, Matte	Excellent	Excellent	Varies	Excellent	Excellent (UD200 with added slip resistance)	Excellent
Ucrete IF Extremely heavy duty, trowel-applied, iron-filled polyurethane concrete	1/4"–1"	Time & Durability	Pigmented	Varies, Matte	Excellent	Excellent	Varies	Excellent	Excellent	Excellent
Ucrete RG Render grade, polyurethane concrete, cove base/wall system	1/8"–1/4"	Function & Hygienics	Pigmented	Varies, Matte	Excellent	Excellent	Varies	N/A	N/A	Moderate

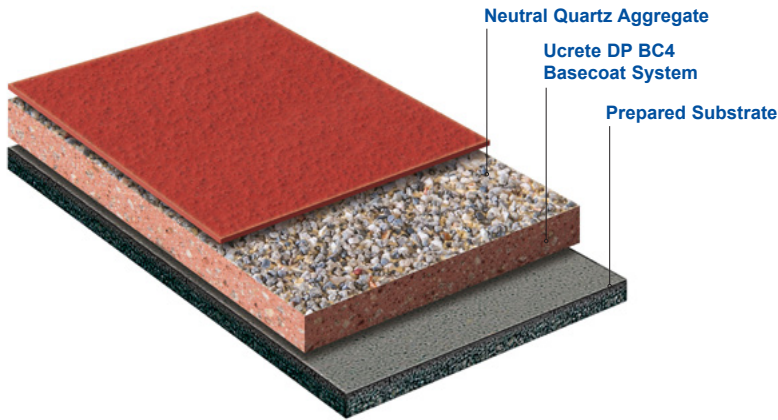
Ucrete DP BC4

(3/16")

Ucrete DP are defined profile floors, ideal for environments that require a high-grip, slip resistant, safe floor with excellent chemical and temperature resistance. With a range of surface profiles, thicknesses and finishes, Ucrete DP systems are the solution for a wide range of process environments including wet areas, greasy food and beverage environments, chemical processing and service ramps.

Suitable Topcoats:

- Ucrete DP Topcoat
- MasterTop GP 500, TC 504, TC 565, TC 570CR, TC 493, TC 693, TC 421 UHW
- MasterTop SRS 71TC, 53TC



Performance Highlights



Hygienic

Can be cleaned to the same standard as stainless steel and does not support biological growth. Accredited for use in facilities operating HACCP food safety systems.



Slip Resistant

Offered in a range of slip resistant textures and profiles, helping to limit trips and falls, resulting in a safer workplace.



Chemical Resistant

Withstands many aggressive chemicals such as acids, alkali, fats, oils and solvents, ensuring durable floors for years to come.



Durable

Proven long-term performance in the most extreme environments, resulting in minimized life-cycle costs.

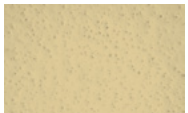


Recommended Applications

Food/Beverage Processing	●
Chemical Industry	●
Wet Process Areas	●
Dry Process Areas	●
Packaging Rooms	●
Dock, Warehouse	●
Healthcare Facilities	●
Industrial Kitchens, Wash Areas	●
Breweries, Wineries	●
Laboratories, Quality Control	●
Freezers and Coolers	●
High-Temperature Rooms	●
Retail Areas, Restrooms, Aisleways	●
Deli, Meat, Bakery, Sweets	●
Lockers, Shower Rooms	●
Heavy Machinery	●
Dairy and Milk Facilities	●

● = Primary ● = Secondary ● = Not Recommended

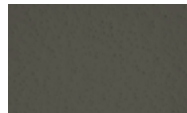
Standard Colors: *Special order colors available for purchase. Please contact local Master Builders Solutions Sales Representative for more information.



CREAM



GREEN



GREEN/BROWN
(CHARCOAL)



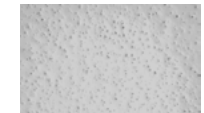
RED



GRAY



BLUE



LIGHT GRAY

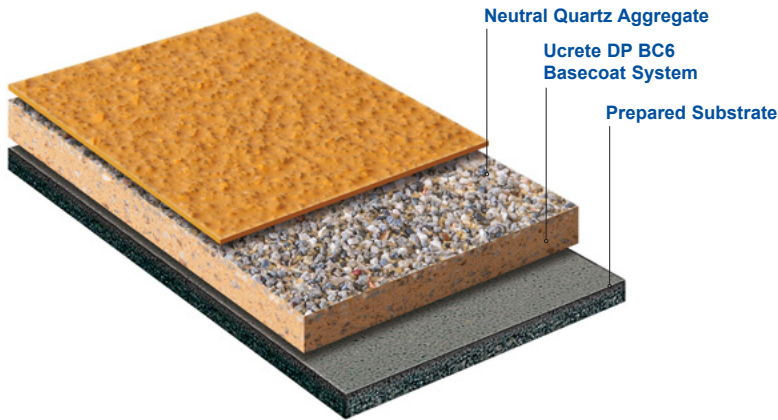
Ucrete DP BC6

(1/4")

Ucrete DP are defined profile floors, ideal for environments that require a high-grip, slip resistant, safe floor with excellent chemical and temperature resistance. With a range of surface profiles, thicknesses and finishes, Ucrete DP systems are the solution for a wide range of process environments including wet areas, greasy food and beverage environments, chemical processing and service ramps.

Suitable Topcoats:

- Ucrete DP Topcoat
- MasterTop GP 500, TC 504, TC 565, TC 570CR, TC 493, TC 693, TC 421 UHW
- MasterTop SRS 71TC, 53TC



Performance Highlights



Hygienic

Can be cleaned to the same standard as stainless steel and does not support biological growth. Accredited for use in facilities operating HACCP food safety systems.



Slip Resistant

Offered in a range of slip resistant textures and profiles, helping to limit trips and falls, resulting in a safer workplace.



Chemical Resistant

Withstands many aggressive chemicals such as acids, alkali, fats, oils and solvents, ensuring durable floors for years to come.



Durable

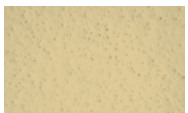
Proven long-term performance in the most extreme environments, resulting in minimized life-cycle costs.

Recommended Applications

Food/Beverage Processing	●
Chemical Industry	●
Wet Process Areas	●
Dry Process Areas	●
Packaging Rooms	●
Dock, Warehouse	●
Healthcare Facilities	●
Industrial Kitchens, Wash Areas	●
Breweries, Wineries	●
Laboratories, Quality Control	●
Freezers and Coolers	●
High-Temperature Rooms	●
Retail Areas, Restrooms, Aisleways	●
Deli, Meat, Bakery, Sweets	●
Lockers, Shower Rooms	●
Heavy Machinery	●
Dairy and Milk Facilities	●

● = Primary ● = Secondary ● = Not Recommended

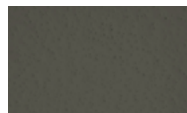
Standard Colors: *Special order colors available for purchase. Please contact local Master Builders Solutions Sales Representative for more information.



CREAM



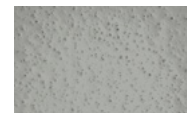
GREEN



GREEN/BROWN
(CHARCOAL)



RED



GRAY



BLUE



LIGHT GRAY

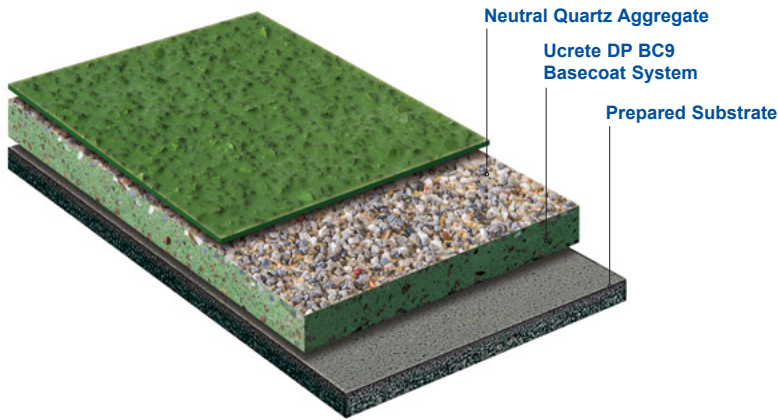
Ucrete DP BC9

(3/8")

Ucrete DP are defined profile floors, ideal for environments that require a high-grip, slip resistant, safe floor with excellent chemical and temperature resistance. With a range of surface profiles, thicknesses and finishes, Ucrete DP systems are the solution for a wide range of process environments including wet areas, greasy food and beverage environments, chemical processing and service ramps.

Suitable Topcoats:

- Ucrete DP Topcoat
- MasterTop GP 500, TC 504, TC 565, TC 570CR, TC 493, TC 693, TC 421 UHW
- MasterTop SRS 71TC, 53TC



Performance Highlights



Hygienic

Can be cleaned to the same standard as stainless steel and does not support biological growth. Accredited for use in facilities operating HACCP food safety systems.



Slip Resistant

Offered in a range of slip resistant textures and profiles, helping to limit trips and falls, resulting in a safer workplace.



Chemical Resistant

Withstands many aggressive chemicals such as acids, alkali, fats, oils and solvents, ensuring durable floors for years to come.



Durable

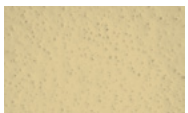
Proven long-term performance in the most extreme environments, resulting in minimized life-cycle costs.

Recommended Applications

Food/Beverage Processing	●
Chemical Industry	●
Wet Process Areas	●
Dry Process Areas	●
Packaging Rooms	●
Dock, Warehouse	●
Healthcare Facilities	●
Industrial Kitchens, Wash Areas	●
Breweries, Wineries	●
Laboratories, Quality Control	●
Freezers and Coolers	●
High-Temperature Rooms	●
Retail Areas, Restrooms, Aisleways	●
Deli, Meat, Bakery, Sweets	●
Lockers, Shower Rooms	●
Heavy Machinery	●
Dairy and Milk Facilities	●

● = Primary ● = Secondary ● = Not Recommended

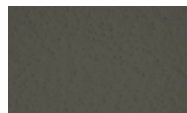
Standard Colors: *Special order colors available for purchase. Please contact local Master Builders Solutions Sales Representative for more information.



CREAM



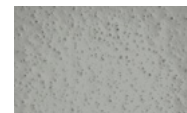
GREEN



GREEN/BROWN
(CHARCOAL)



RED



GRAY



BLUE



LIGHT GRAY

Ucrete HP/Q

(3/16" – 1/4")

Ucrete HP/Q combines aesthetics and functionality to provide an attractive floor finish for a number of different environments. With a light texture and a color quartz finish, Ucrete HP/Q gives a safe, decorative floor for tough environments including wet processing, pharmaceutical plants, clean rooms, and many more areas where a durable floor finish is required.

Suitable Topcoats:

- MasterTop GP 500, TC 565, TC 493, TC 693, TC 421 UHW
- MasterTop SRS 71TC



Performance Highlights



Hygienic

Can be cleaned to the same standard as stainless steel and does not support biological growth. Accredited for use in facilities operating HACCP food safety systems.



Thermal Shock Resistant

Unaffected by freeze/thaw cycles and resists hot-water cleaning, handling temperatures from -40°F (-40°C) to 180°F (82.2°C)



Slip Resistant

Offered in a range of slip resistant textures and profiles, helping to limit trips and falls, resulting in a safer workplace.



Chemical Resistant

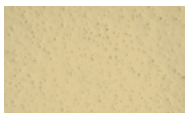
Withstands many aggressive chemicals such as acids, alkali, fats, oils and solvents, ensuring durable floors for years to come.

Recommended Applications

Food/Beverage Processing	●
Chemical Industry	●
Wet Process Areas	●
Dry Process Areas	●
Packaging Rooms	●
Dock, Warehouse	●
Healthcare Facilities	●
Industrial Kitchens, Wash Areas	●
Breweries, Wineries	●
Laboratories, Quality Control	●
Freezers and Coolers	●
High-Temperature Rooms	●
Retail Areas, Restrooms, Aisleways	●
Deli, Meat, Bakery, Sweets	●
Lockers, Shower Rooms	●
Heavy Machinery	●
Dairy and Milk Facilities	●

● = Primary ● = Secondary ● = Not Recommended

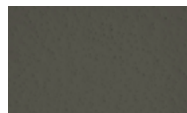
Standard Colors: *Please contact your local Master Builders Sales Representative for special order colors and quartz options.



CREAM



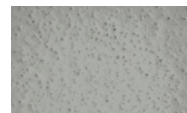
GREEN



GREEN/BROWN
(CHARCOAL)



RED



GRAY



BLUE



LIGHT GRAY

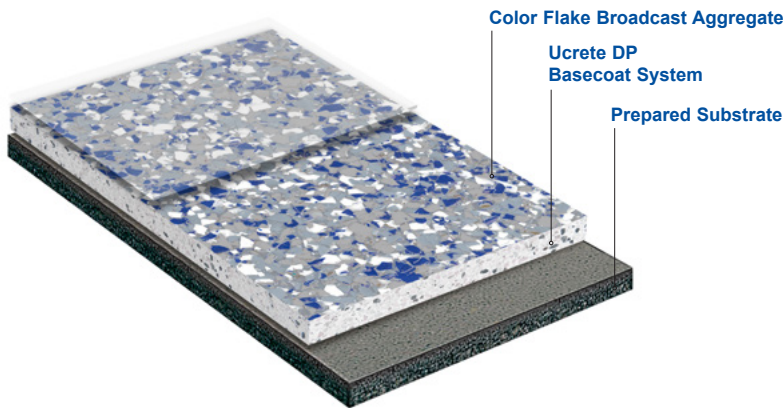
Ucrete HP/F

(3/16" – 1/4")

Ucrete HP/F is an aesthetic, durable, heavy-duty flooring system with a decorative flake chip broadcast, yielding a slightly textured surface. Ucrete HP/F can handle tough conditions, making it ideal for areas with high impact pressure, chemical exposure and high-temperature cleaning, while maintaining its aesthetics.

Suitable Topcoats:

- MasterTop GP 500, TC 565, TC 493, TC 693, TC 421 UHW
- MasterTop SRS 71TC



Performance Highlights



Hygienic

Can be cleaned to the same standard as stainless steel and does not support biological growth. Accredited for use in facilities operating HACCP food safety systems.



Chemical Resistant

Withstands many aggressive chemicals such as acids, alkali, fats, oils and solvents, ensuring durable floors for years to come.



Thermal Shock Resistant

Unaffected by freeze/thaw cycles and resists hot-water cleaning, handling temperatures from -40°F (-40°C) to 180°F (82.2°C)



Impact Resistant

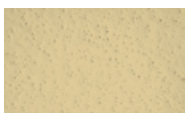
A tough floor with high energy absorption capacity, minimizing damage and preventing cracks that might harbor bacteria.

Recommended Applications

Food/Beverage Processing	●
Chemical Industry	●
Wet Process Areas	●
Dry Process Areas	●
Packaging Rooms	●
Dock, Warehouse	●
Healthcare Facilities	●
Industrial Kitchens, Wash Areas	●
Breweries, Wineries	●
Laboratories, Quality Control	●
Freezers and Coolers	●
High-Temperature Rooms	●
Retail Areas, Restrooms, Aisleways	●
Deli, Meat, Bakery, Sweets	●
Lockers, Shower Rooms	●
Heavy Machinery	●
Dairy and Milk Facilities	●

● = Primary ● = Secondary ● = Not Recommended

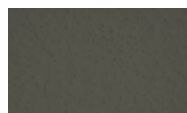
Standard Colors: *Please contact your local Master Builders Sales Representative for special order colors and flake options.



CREAM



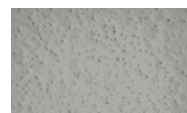
GREEN



GREEN/BROWN
(CHARCOAL)



RED



GRAY



BLUE

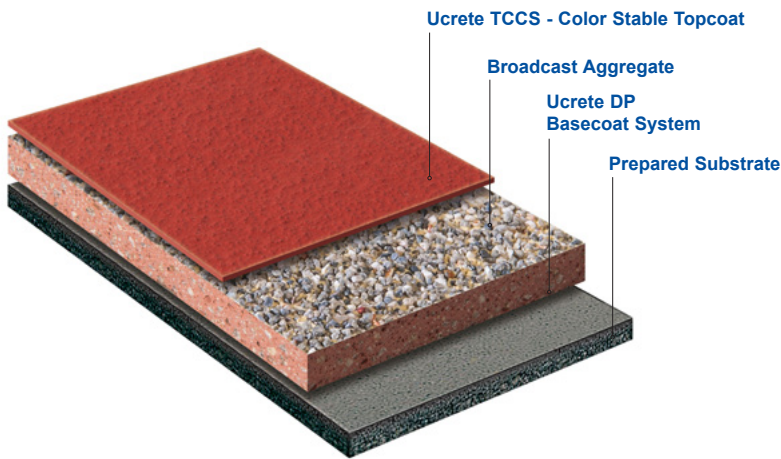


LIGHT GRAY

Ucrete CS

(3/16" – 3/8")

Ucrete CS is a heavy-duty flooring system with color stability in UV and chemical environments. Ucrete CS is an innovative flooring technology, ideal for environments requiring high-grip, dependable, safe and aesthetic floors. Ucrete CS has **enhanced resistance to discoloration from chemical staining and ultraviolet light** without sacrificing service temperature, and is available in a range of surface profiles.



Performance Highlights



Hygienic

Can be cleaned to the same standard as stainless steel and does not support biological growth. Accredited for use in facilities operating HACCP food safety systems.



Slip Resistant

Offered in a range of slip resistant textures and profiles, helping to limit trips and falls, resulting in a safer workplace.



Durable

Proven long-term performance in the most extreme environments, resulting in minimized life-cycle costs.



Chemical Resistant

Withstands many aggressive chemicals such as **nitric acid**, alkali, fats, oils and solvents, ensuring durable floors for years to come.

Recommended Applications

Food/Beverage Processing	●
Chemical Industry	●
Wet Process Areas	●
Dry Process Areas	●
Packaging Rooms	●
Dock, Warehouse	●
Healthcare Facilities	●
Industrial Kitchens, Wash Areas	●
Breweries, Wineries	●
Laboratories, Quality Control	●
Freezers and Coolers	●
High-Temperature Rooms	●
Retail Areas, Restrooms, Aisleways	●
Deli, Meat, Bakery, Sweets	●
Lockers, Shower Rooms	●
Heavy Machinery	●
Dairy and Milk Facilities	●

● = Primary ● = Secondary ● = Not Recommended

Standard Colors: *Special order colors available for purchase. Please contact local Master Builders Solutions Sales Representative for more information.



RED



GRAY

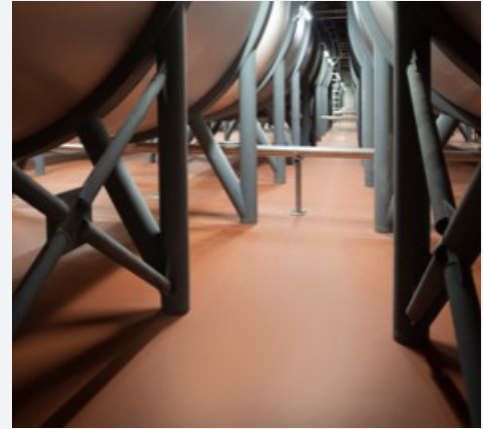
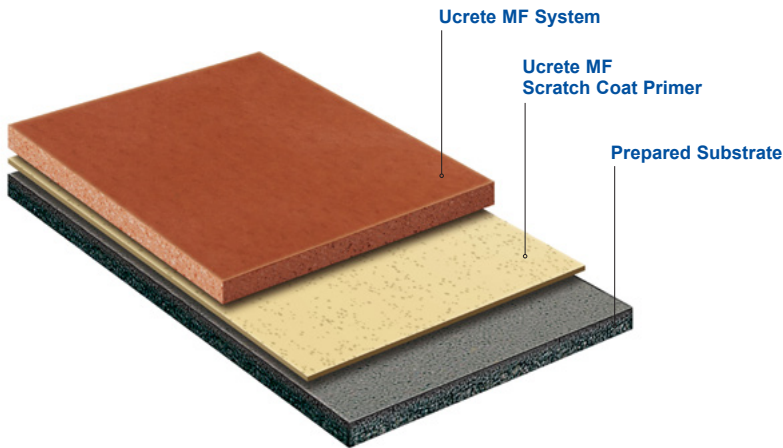


LIGHT GRAY

Ucrete MF

(3/16" – 1/4")

Ucrete MF is a unique, heavy-duty polyurethane resin floor with exceptional resistance to aggressive chemicals. It provides a smooth, protective floor finish suitable for applications in predominantly dry environments where high chemical resistance, impact resistance and a smooth, seamless finish are required. Ucrete MF can withstand significant heavy traffic, making it ideal for moving heavy equipment safely.



Performance Highlights



Hygienic

Can be cleaned to the same standard as stainless steel and does not support biological growth. Accredited for use in facilities operating HACCP food safety systems.



Chemical Resistant

Withstands many aggressive chemicals such as acids, alkali, fats, oils and solvents, ensuring durable floors for years to come.



Impact Resistant

A tough floor with high energy absorption capacity, minimizing damage and preventing cracks that might harbor bacteria.



Durable

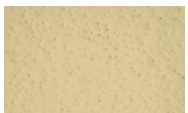
Proven long-term performance in the most extreme environments, resulting in minimized life-cycle costs.

Recommended Applications

Food/Beverage Processing	●
Chemical Industry	●
Wet Process Areas	●
Dry Process Areas	●
Packaging Rooms	●
Dock, Warehouse	●
Healthcare Facilities	●
Industrial Kitchens, Wash Areas	●
Breweries, Wineries	●
Laboratories, Quality Control	●
Freezers and Coolers	●
High-Temperature Rooms	●
Retail Areas, Restrooms, Aisleways	●
Deli, Meat, Bakery, Sweets	●
Lockers, Shower Rooms	●
Heavy Machinery	●
Dairy and Milk Facilities	●

● = Primary ● = Secondary ● = Not Recommended

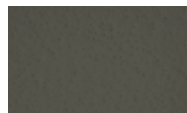
Standard Colors: *Special order colors available for purchase. Please contact local Master Builders Solutions Sales Representative for more information.



CREAM



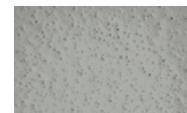
GREEN



GREEN/BROWN
(CHARCOAL)



RED



GRAY



BLUE

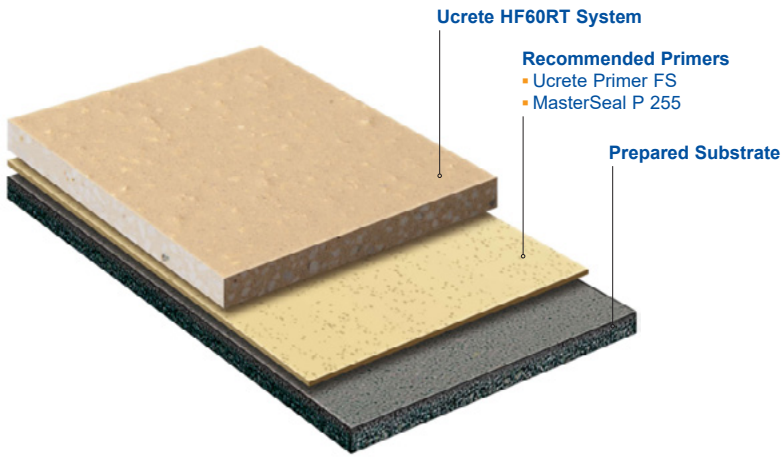


LIGHT GRAY

Ucrete HF60RT

(1/4")

Ucrete HF60RT is a heavy-duty, polyurethane, flow-applied **rake and trowel** flooring system. It is designed for rapid installation and ideally suited for large, fast-track new build and refurbishment projects. This chemical resistant, impervious system provides a lightly textured protective floor finish for applications in wet and dry process environments.



Performance Highlights



Hygienic

Can be cleaned to the same standard as stainless steel and does not support biological growth. Accredited for use in facilities operating HACCP food safety systems.



Durable

Proven long-term performance in the most extreme environments, resulting in minimized life-cycle costs.



Fast Return to Service

Ucrete Flooring can be installed and walked on in as little as 2–3 hours and back in service after 5 hours at 50°F (10°C), reducing production downtime.



Chemical Resistant

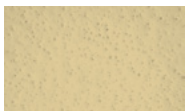
Withstands many aggressive chemicals such as acids, alkali, fats, oils and solvents, ensuring durable floors for years to come.

Recommended Applications

Food/Beverage Processing	●
Chemical Industry	●
Wet Process Areas	●
Dry Process Areas	●
Packaging Rooms	●
Dock, Warehouse	●
Healthcare Facilities	●
Industrial Kitchens, Wash Areas	●
Breweries, Wineries	●
Laboratories, Quality Control	●
Freezers and Coolers	●
High-Temperature Rooms	●
Retail Areas, Restrooms, Aisleways	●
Deli, Meat, Bakery, Sweets	●
Lockers, Shower Rooms	●
Heavy Machinery	●
Dairy and Milk Facilities	●
Secondary Containment	●

● = Primary ● = Secondary ● = Not Recommended

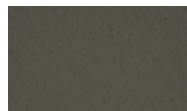
Standard Colors: *Special order colors available for purchase. Please contact local Master Builders Solutions Sales Representative for more information.



CREAM



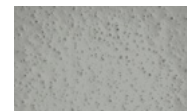
GREEN



GREEN/BROWN
(CHARCOAL)



RED



GRAY



BLUE



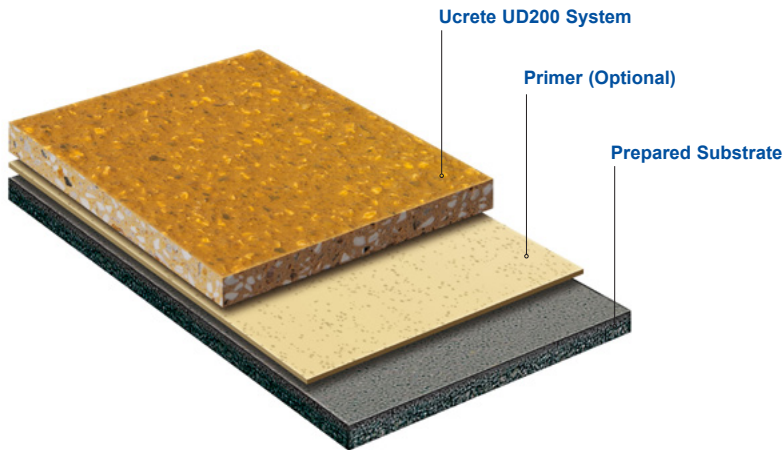
LIGHT GRAY

Ucrete UD200

(1/4" – 1/2")

Ucrete UD200 is a four-component polyurethane-concrete system with a combination of durability, speed of cure and ease of cleaning. It can be installed at different thicknesses, determined by the service and cleaning temperatures and the severity of traffic expected. Ucrete UD200 provides a lightly textured protective floor finish, providing a safe and attractive floor in water wet environments and can be put back into service after 5 hours at 50°F (10°C).*

*Using Ucrete Accelerator



Performance Highlights



Hygienic

Can be cleaned to the same standard as stainless steel and does not support biological growth. Accredited for use in facilities operating HACCP food safety systems.



Durable

Proven long-term performance in the most extreme environments, resulting in minimized life-cycle costs.



Fast Return to Service

Ucrete Flooring can be installed and walked on in as little as 2–3 hours and back in service after 5 hours at 50°F (10°C), reducing production downtime.



Chemical Resistant

Withstands many aggressive chemicals such as acids, alkali, fats, oils and solvents, ensuring durable floors for years to come.

Recommended Applications

Food/Beverage Processing	●
Chemical Industry	●
Wet Process Areas	●
Dry Process Areas	●
Packaging Rooms	●
Dock, Warehouse	●
Healthcare Facilities	●
Industrial Kitchens, Wash Areas	●
Breweries, Wineries	●
Laboratories, Quality Control	●
Freezers and Coolers	●
High-Temperature Rooms	●
Retail Areas, Restrooms, Aisleways	●
Deli, Meat, Bakery, Sweets	●
Lockers, Shower Rooms	●
Heavy Machinery	●
Dairy and Milk Facilities	●
Secondary Containment	●

● = Primary ● = Secondary ● = Not Recommended

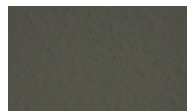
Standard Colors: *Special order colors available for purchase. Please contact local Master Builders Solutions Sales Representative for more information.



CREAM



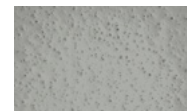
GREEN



GREEN/BROWN
(CHARCOAL)



RED



GRAY



BLUE

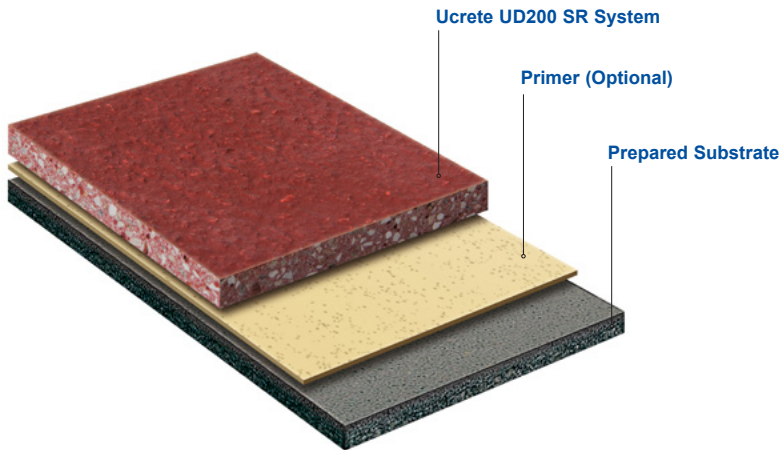


LIGHT GRAY

Ucrete UD200 SR

(1/4" – 1/2")

Ucrete UD200 SR unmatched, heavy-duty polyurethane resin technology with exceptional resistance to aggressive chemicals, high temperatures and heavy traffic. Ucrete UD200 SR has a textured surface providing a safe and attractive floor in wet and greasy environments. It is ideal for the food and bevarage, pharmaceutical and chemical industries and wherever a **robust slip resistant floor** is required.



Performance Highlights



Hygienic

Can be cleaned to the same standard as stainless steel and does not support biological growth. Accredited for use in facilities operating HACCP food safety systems.



Slip Resistant

Offered in a range of slip resistant textures and profiles, helping to limit trips and falls, resulting in a safer workplace.



Chemical Resistant

Withstands many aggressive chemicals such as acids, alkali, fats, oils and solvents, ensuring durable floors for years to come.



Fast Return to Service

Ucrete Flooring can be installed and walked on in as little as 2–3 hours and back in service after 5 hours at 50 °F (10 °C)*, reducing production downtime.

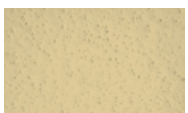
**Using Ucrete Accelerator*

Recommended Applications

Food/Beverage Processing	●
Chemical Industry	●
Wet Process Areas	●
Dry Process Areas	●
Packaging Rooms	●
Dock, Warehouse	●
Healthcare Facilities	●
Industrial Kitchens, Wash Areas	●
Breweries, Wineries	●
Laboratories, Quality Control	●
Freezers and Coolers	●
High-Temperature Rooms	●
Retail Areas, Restrooms, Aisleways	●
Deli, Meat, Bakery, Sweets	●
Lockers, Shower Rooms	●
Heavy Machinery	●
Dairy and Milk Facilities	●
Secondary Containment	●

● = Primary ● = Secondary ● = Not Recommended

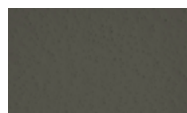
Standard Colors: *Special order colors available for purchase. Please contact local Master Builders Solutions Sales Representative for more information.*



CREAM



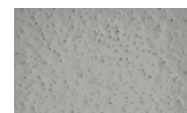
GREEN



GREEN/BROWN
(CHARCOAL)



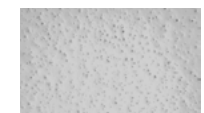
RED



GRAY



BLUE

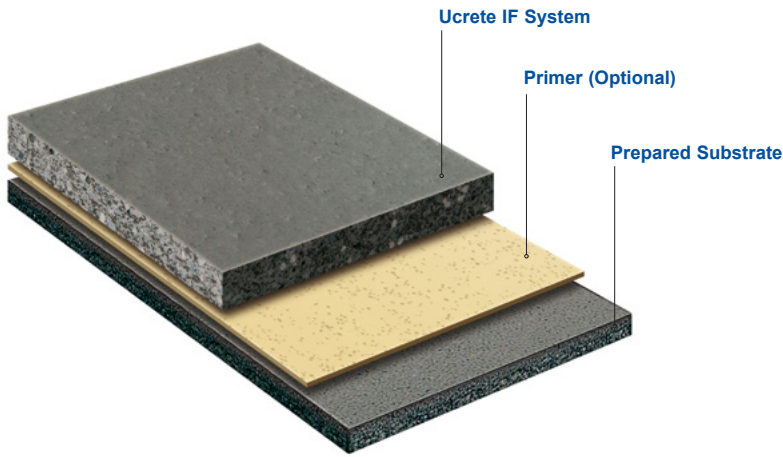


LIGHT GRAY

Ucrete IF

(1/4" – 1")

The toughest of Ucrete floors, Ucrete IF uses the strength of iron combined with the inherent strength of Ucrete technology to withstand even the most aggressive of traffic. Ucrete IF has a dense and impervious iron armored surface, making it ideal for protection for areas of heavy impact, heavy traffic, and tough environments. Ideal environments include waste processing plants, heavy engineering workshops and heavy process areas.



Performance Highlights



Hygienic

Can be cleaned to the same standard as stainless steel and does not support biological growth. Accredited for use in facilities operating HACCP food safety systems.



Durable

Proven long-term performance in the most extreme environments, resulting in minimized life-cycle costs.



Impact Resistant

A tough floor with high energy absorption capacity, minimizing damage and preventing cracks that might harbor bacteria.



Thermal Shock Resistant

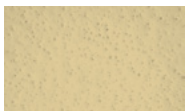
Unaffected by freeze/thaw cycles and resists hot-water cleaning, handling temperatures from -40°F (-40°C) to 266°F (130°C)

Recommended Applications

Food/Beverage Processing	●
Chemical Industry	●
Wet Process Areas	●
Dry Process Areas	●
Packaging Rooms	●
Dock, Warehouse	●
Healthcare Facilities	●
Industrial Kitchens, Wash Areas	●
Breweries, Wineries	●
Laboratories, Quality Control	●
Freezers and Coolers	●
High-Temperature Rooms	●
Retail Areas, Restrooms, Aisleways	●
Dairy and Milk Facilities	●
Recycling Facilities	●
Heavy Machinery & Manufacturing	●
Deli, Meat, Bakery, Sweets	●
AGV aisles	●
Waste Transfer Stations	●

● = Primary ● = Secondary ● = Not Recommended

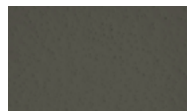
Standard Colors: *Special order colors available for purchase. Please contact local Master Builders Solutions Sales Representative for more information.



CREAM



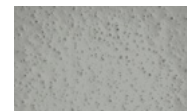
GREEN



GREEN/BROWN
(CHARCOAL)



RED



GRAY



BLUE

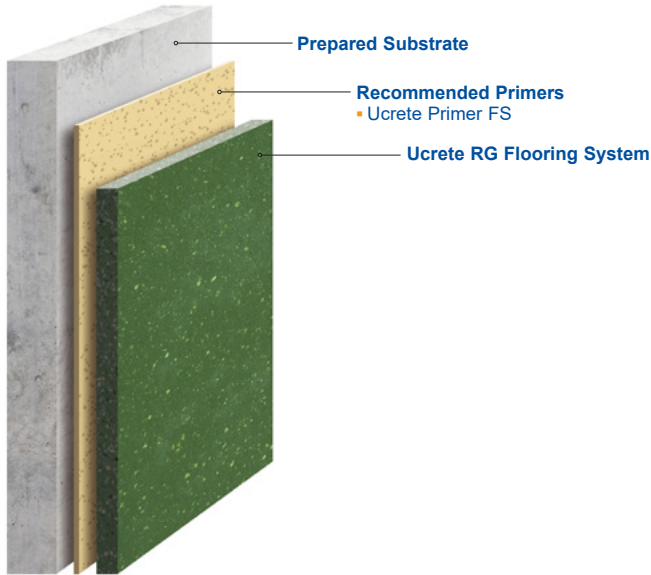


LIGHT GRAY

Ucrete RG

(1/8" – 1/4")

Ucrete RG, a thixotropic resin mortar, is designed for vertical applications such as forming cove bases and renovating walls. It has exceptional resistance to aggressive chemicals, heavy impact and very high temperatures. Ucrete RG is compatible with all flooring grade materials, giving excellent containments as well as allowing for ease of cleaning.



Performance Highlights



Hygienic

Can be cleaned to the same standard as stainless steel and does not support biological growth. Accredited for use in facilities operating HACCP food safety systems.



Chemical Resistant

Withstands many aggressive chemicals such as acids, alkali, fats, oils and solvents, ensuring durable floors for years to come.



Impact Resistant

A tough floor with high energy absorption capacity, minimizing damage and preventing cracks that might harbor bacteria.



Thermal Shock Resistant

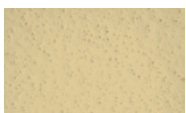
Unaffected by freeze/thaw cycles and resists hot-water cleaning, handling temperatures from -40°F (-40°C) to 266°F (130°C)

Recommended Applications

Food/Beverage Processing	●
Chemical Industry	●
Wet Process Areas	●
Dry Process Areas	●
Packaging Rooms	●
Dock, Warehouse	●
Healthcare Facilities	●
Industrial Kitchens, Wash Areas	●
Breweries, Wineries	●
Laboratories, Quality Control	●
Freezers and Coolers	●
High-Temperature Rooms	●
Retail Areas, Restrooms, Aisleways	●
Deli, Meat, Bakery, Sweets	●
Lockers, Shower Rooms	●
Heavy Machinery	●
Dairy and Milk Facilities	●
Secondary Containment	●

● = Primary ● = Secondary ● = Not Recommended

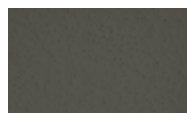
Standard Colors: *Special order colors available for purchase. Please contact local Master Builders Solutions Sales Representative for more information.



CREAM



GREEN



GREEN/BROWN
(CHARCOAL)



RED



GRAY



BLUE



LIGHT GRAY

Topcoat and Complementary Products Selection Guide

		Ucrete DP BC4, DP BC6 and DP BC9	Ucrete HP/Q	Ucrete HP/F	Ucrete CS	Ucrete MF	Ucrete HF60RT	Ucrete UD200	Ucrete UD200 SR	Ucrete IF	Ucrete RG	
SUITABLE TOPCOATS	Ucrete DP Topcoat	A heavy duty polyurethane technology designed for use as a broadcast lock coat. It exhibits exceptional chemical and temperature resistance.	✓								✓	
	Ucrete TCCS	An encapsulation resin topcoat with enhanced resistance to discoloration from chemical staining and ultraviolet light.	✓			✓						
	MasterTop GP 500	100% solids epoxy polymer with very low VOC. It has a high gloss finish creating a light-reflective, easy to clean surface. Can be clear or pigmented.	✓	✓	✓							✓
	MasterTop TC 504	High solids, epoxy polymer, with a high gloss finish for good light reflectivity, pigmented with various color options and virtually no odor.	✓									✓
	MasterTop TC 565	High solids epoxy polymer resin, specially formulated for areas requiring an increased level of chemical resistance. Creates a hard surface that is easy to clean.	✓	✓	✓							✓
	MasterTop TC 570 CR	Pure Novolac epoxy resin with resistance to 98% sulfuric acid. It is 100% solids and has a high level of chemical resistance has virtually no odor.	✓									✓
	MasterTop TC 493	A pigmented or clear aliphatic polyurethane coating, with excellent abrasion resistance and UV Resistance.	✓	✓	✓							✓
	MasterTop TC 693	An aliphatic polyaspartic coating with clear and tintable options. This topcoat provides excellent abrasion resistance, chemical resistance, UV resistance and color retention.	✓	✓	✓							✓
	MasterTop TC 421 UHW	High solids, moisture cured urethane coating for MasterTop Flooring Systems. This is a durable topcoat that resists harsh chemicals and abrasion, creating a safe floor for years.	✓	✓	✓							✓
	MasterTop SRS 71TC	A solvent free, 100% reactive resin, ideal for systems that utilize decorative flake or quartz broadcast. It has superior UV resistance, resulting in a durable, non-chalking surface.	✓	✓	✓							✓
	MasterTop SRS 53TC	A solvent free, medium viscosity, 100% reactive resin designed for pigmented or decorative flooring systems. It cures quickly, reducing facility downtime.	✓									✓
System application does not use a topcoat												
COMPLEMENTARY PRODUCTS	Ucrete Accelerator	An additive for Ucrete UD200, UD200 SR and Ucrete DP Basecoat systems, meant to enhance the speed of cure in cold conditions as low as 40°F (4°C).	✓	✓	✓			✓	✓			
	Ucrete HP Broadcast Sand	Neutral quartz broadcast aggregate used for Ucrete DP Basecoat systems.	✓			✓						
	MasterTop DE 42CQ	Decorative colored quartz broadcast aggregate for Ucrete HP/Q. Both solid colors and blends available.		✓								
	MasterTop DE 114FK	Decorative flake broadcast aggregate for Ucrete HP/F. Multiple blends available.			✓							



Master Builders Solutions

The Master Builders Solutions brand brings all of MBCC Groups expertise together to create chemical solutions for new construction, maintenance, repair and renovation of structures. Master Builders Solutions is built on the experience gained from more than a century in the construction industry.

The know-how and experience of a global community of MBCC Group construction experts form the core of Master Builders Solutions. We combine the right elements from our portfolio to solve your specific construction challenges. We collaborate across areas

of expertise and regions and draw on the experience gained from countless construction projects worldwide. We leverage global MBCC Group technologies, as well as our in-depth knowledge of local building needs, to develop innovations that help make you more successful and drive sustainable construction. The comprehensive portfolio under the Master Builders Solutions brand encompasses concrete admixtures, cement additives, chemical solutions for underground construction, waterproofing solutions, sealants, concrete repair and protection solutions, performance grouts and performance flooring solutions.

Master Builders Solutions products for the Construction Industry:

MasterAir®

Solutions for air-entrained concrete

MasterBrace®

Solutions for concrete strengthening

MasterCast®

Solutions for manufactured concrete product industry

MasterCem®

Solutions for cement manufacture

MasterEmaco®

Solutions for concrete repair

MasterFinish®

Solutions for formwork treatment

MasterFlow®

Solutions for precision grouting

MasterFiber®

Comprehensive solutions for fiber reinforced concrete

MasterGlenium®

Solutions for high-performance concrete

MasterInject®

Solutions for concrete injection

MasterKure®

Solutions for concrete curing

MasterLife®

Solutions for enhanced durability

MasterMatrix®

Advanced rheology control solutions for self-consolidating concrete

MasterPel®

Solutions for water tight concrete

MasterPolyheed®

Solutions for high-performance concrete

MasterPozzolith®

Solutions for water-reduced concrete

MasterProtect®

Solutions for concrete protection

MasterRheobuild®

Solutions for super-plasticized concrete

MasterRoc®

Solutions for underground construction

MasterSeal®

Solutions for waterproofing and sealing

MasterSet®

Solutions for retardation control

MasterSure®

Solutions for workability control

MasterTop®

Solutions for industrial and commercial floors

Ucrete®

Flooring solutions for harsh environments

Master Builders Solutions
Constructions Systems US, LLC
 889 Valley Park Drive
 Shakopee, MN 55379 USA

Customer Service (800) 433-9517
Technical Service (800) 243-6739
master-builders-solutions.com/EN-US



© registered trademark of a Group member
 in many countries of the world

© 2022 MBCC Group, 14000541 rev 11/2022

LIMITED WARRANTY NOTICE: Master Builders Solutions Construction Systems US, LLC ("Master Builders") warrants this product to be free from manufacturing defects and to meet the technical properties on the current Technical Data Guide, if used as directed within shelf life. Satisfactory results depend not only on quality products but also upon many factors beyond our control. Master Builders MAKES NO OTHER WARRANTY OR GUARANTEE, EXPRESS OR IMPLIED, INCLUDING WARRANTIES OF MERCHANTABILITY OR FITNESS FOR A PARTICULAR PURPOSE WITH RESPECT TO ITS PRODUCTS. The sole and exclusive remedy of Purchaser for any claim concerning this product, including but not limited to, claims alleging breach of warranty, negligence, strict liability or otherwise, is shipment to purchaser of product equal to the amount of product that fails to meet this warranty or refund of the original purchase price of product that fails to meet this warranty, at the sole option of Master Builders. Any claims concerning this product must be received in writing within one (1) year from the date of shipment and any claims not presented within that period are waived by Purchaser. Master Builders WILL NOT BE RESPONSIBLE FOR ANY SPECIAL, INCIDENTAL, CONSEQUENTIAL (INCLUDING LOST PROFITS) OR PUNITIVE DAMAGES OF ANY KIND.

Purchaser must determine the suitability of the products for the intended use and assumes all risks and liabilities in connection therewith. This information and all further technical advice are based on Master Builders present knowledge and experience. However, Master Builders assumes no liability for providing such information and advice including the extent to which such information and advice may relate to existing third party intellectual property rights, especially patent rights, nor shall any legal relationship be created by or arise from the provision of such information and advice. Master Builders reserves the right to make any changes according to technological progress or further developments. The Purchaser of the Product(s) must test the product(s) for suitability for the intended application and purpose before proceeding with a full application of the product(s). Performance of the product described herein should be verified by testing and carried out by qualified experts.