



Master Builders Solutions

Performance Flooring Color Portfolio



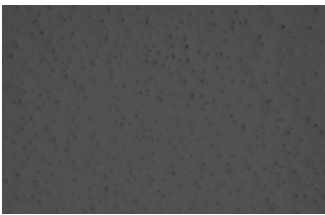
Pigment Additive

Ucrete® Colors

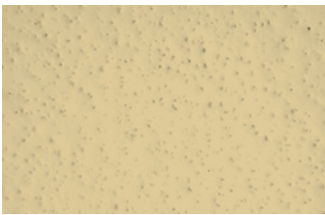
Liquid pigment for use in all [Ucrete Cementitious flooring systems](#).
Sold in individual pigment packs. Please see page 7 for Ucrete TCCS colors.



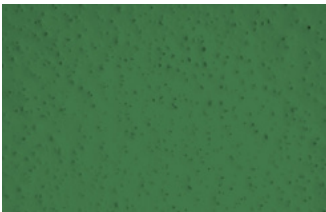
Blue



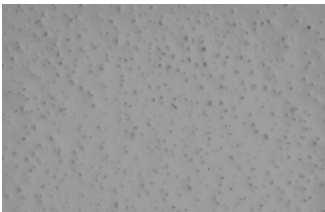
Green/Brown (Charcoal)



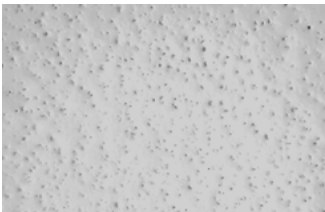
Cream



Green



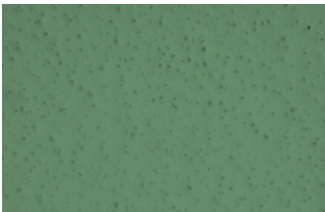
Gray



Light Gray



Red



Light Green*



Orange*



Yellow*

*Non-stocked materials

Texture

Texture can be adjusted based on installation requirements. For more information, contact a local Master Builders Solutions sales representative.

DISCLAIMER: All color reproductions are intended to provide an indication of color. Actual color and texture of products may vary from those shown in this brochure. Aesthetics are highly dependent on applicator installation procedures. Applied samples and test patches are recommended for color matching and final approvals for all Master Builders Solutions Performance Flooring Products.

Pigment Additive

MasterTop® PGM 155 Colors

Powder pigment for use in [MasterTop SRS MMA-based flooring systems](#).
Sold in individual 10 lb. pails.



Black



Blue



Buff



Dark Gray



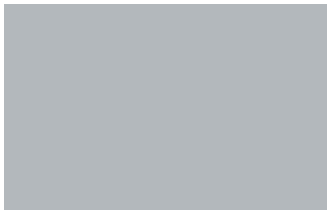
Dark Stone



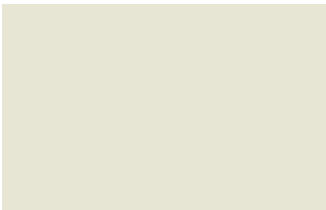
Green



Light Beige



Light Silver Gray



Light Stone



Red



White



Safety Yellow*



Custom Color*

*Non-stocked materials

Custom Colors and Texture

Custom colors are available for purchase. Texture can be adjusted, based on installation requirements. For more information, contact a local Master Builders Solutions sales representative.

DISCLAIMER: All color reproductions are intended to provide an indication of color. Actual color and texture of products may vary from those shown in this brochure. Aesthetics are highly dependent on applicator installation procedures. Applied samples and test patches are recommended for color matching and final approvals for all Master Builders Solutions Performance Flooring Products.

Pigment Additive

MasterTop® PGM 1000 Colors

Liquid pigment for use in [MasterTop GP 500](#) and [MasterTop TC 421 UHW](#).
Sold in individual quart cans.



Black



Deep Blue



Charcoal



Medium Gray



Tan



Bright Green



Battleship Gray



Light Gray



Safety Red



White



Safety Yellow

Gloss and Texture

Gloss and texture can be adjusted based on installation requirements. For more information, contact a local Master Builders Solutions sales representative.

DISCLAIMER: All color reproductions are intended to provide an indication of color. Actual color and texture of products may vary from those shown in this brochure. Aesthetics are highly dependent on applicator installation procedures. Applied samples and test patches are recommended for color matching and final approvals for all Master Builders Solutions Performance Flooring Products.

Pigment Additive

MasterTop® PGM 500 Colors

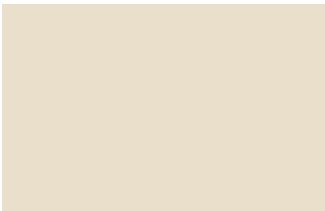
Liquid pigment for use in [MasterTop GP 500](#).
Sold in individual pint cans.



Gray



Light Gray



Light Tan



Red



Safety Yellow



Tan



White



Custom Color*

*Non-stocked materials

Custom Colors, Gloss and Texture

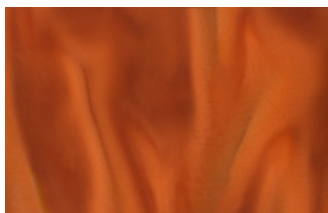
Custom colors are available for purchase. Gloss and texture can be adjusted, based on installation requirements. For more information, contact a local Master Builders Solutions sales representative

DISCLAIMER: All color reproductions are intended to provide an indication of color. Actual color and texture of products may vary from those shown in this brochure. Aesthetics are highly dependent on applicator installation procedures. Applied samples and test patches are recommended for color matching and final approvals for all Master Builders Solutions Performance Flooring Products.

Pigment Additive

MasterTop® PGM 600 Signature Colors

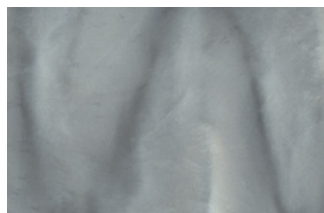
Powder **metallic pigment** for use in [select MasterTop Epoxy flooring systems](#).
Sold in individual containers.



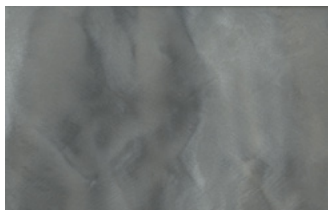
Blaze*



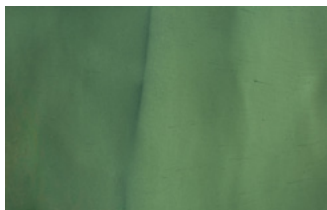
Island Time*



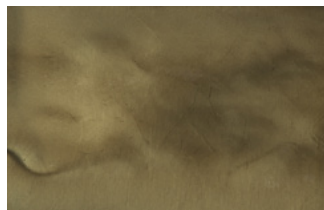
On The Rocks*



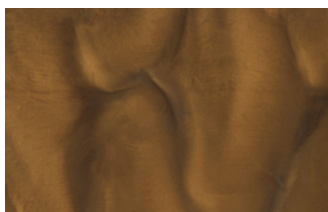
Anchor*



Sea Turtle*



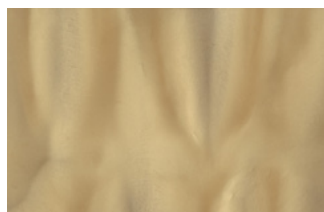
Shaded Creek*



Spiced Ale*



Waterfall*



Wheatfield*



Standard Colors*



Custom Color*

*Non-stocked materials

Standard Colors:

In addition to the signature pigments, Master Builders Solutions offers a large collection of standard colors. To view all available color options, reference the ***Flake, Quartz, and Pigment Colors for Decorative Floors*** brochure or contact your local Master Builders Solutions representative for more information.

Custom Colors:

Project specifications may require a specific color outside of the signature and standard collections. To design a custom color, reference the ***Flooring Color Visualizer Tool*** at bit.ly/flooringvisualizer or contact your local Master Builders Solutions representative for more information.

DISCLAIMER: All color reproductions are intended to provide an indication of color. Actual color and texture of products may vary from those shown in this brochure. Aesthetics are highly dependent on applicator installation procedures. Applied samples and test patches are recommended for color matching and final approvals for all Master Builders Solutions Performance Flooring Products.

Pigment Additive

MasterTop® TC 693 Colors

MasterTop TC 693 is available in clear, tint base and light tint base. MasterSeal 900 pigment packs are sold separately and added to the MasterTop TC 693 PTA pails.



Safety Yellow
Tint Base



Target Red
Tint Base



Black
Tint Base



Sesame
Tint Base



Desert Tan
Tint Base



Brick Buff
Tint Base



Shadow Gray
Light Tint Base



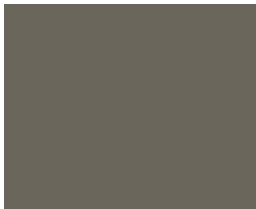
Chrome Gray
Tint Base



Quartz
Tint Base



French Gray
Tint Base



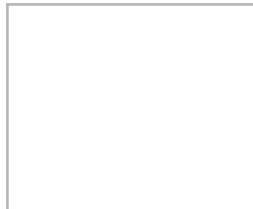
Aluminum Gray
Tint Base



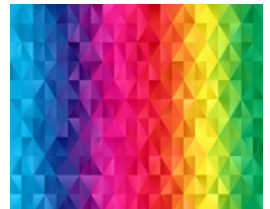
Shamrock Green
Tint Base



Bender Blue
Tint Base



White
Light Tint Base



Custom Color*

Custom Colors, Gloss and Texture

Custom colors are available for purchase. Gloss and texture can be adjusted, based on installation requirements. For more information, contact a local Master Builders Solutions sales representative

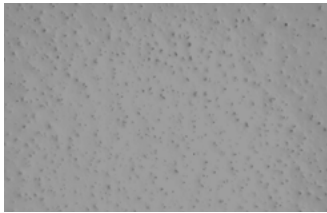
*Non-stocked materials

DISCLAIMER: All color reproductions are intended to provide an indication of color. Actual color and texture of products may vary from those shown in this brochure. Aesthetics are highly dependent on applicator installation procedures. Applied samples and test patches are recommended for color matching and final approvals for all Master Builders Solutions Performance Flooring Products.

Pre-Pigmented

Ucrete® TCCS

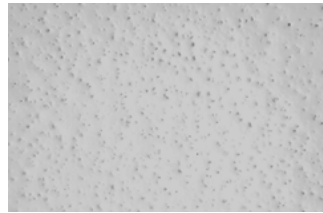
Pre-tinted, color-stable topcoat for Ucrete DP basecoat systems.
Sold in kits.



Gray



Red



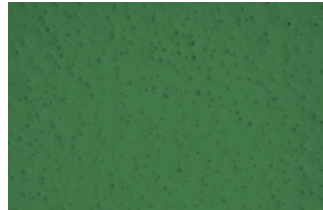
Light Gray



Blue*



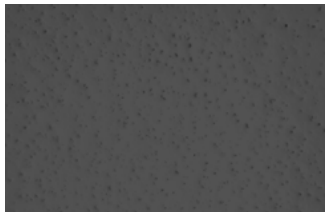
Bright Yellow*



Green*



Cream*



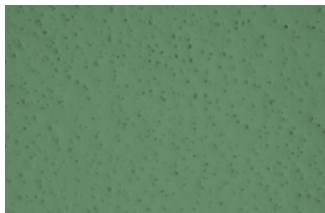
Green/Brown (Charcoal)*



Light Blue*



Orange*



Light Green*



Yellow*

*Non-stocked materials

Texture

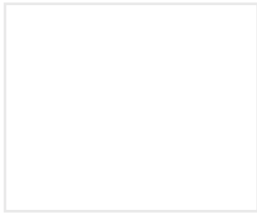
Texture can be adjusted based on installation requirements. For more information, contact a local Master Builders Solutions sales representative.

DISCLAIMER: All color reproductions are intended to provide an indication of color. Actual color and texture of products may vary from those shown in this brochure. Aesthetics are highly dependent on applicator installation procedures. Applied samples and test patches are recommended for color matching and final approvals for all Master Builders Solutions Performance Flooring Products.

Pre-Pigmented

MasterTop® TC 493 Colors

Available in clear and pre-pigmented.
Sold in 5 gallon pails.



Clear



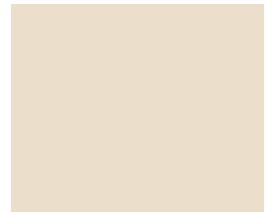
Gray



Light Gray



White



Light Tan*



Red*



Safety Yellow*



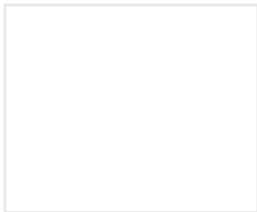
Tan*



Custom Color*

MasterTop® GP 500

Available in clear and pre-pigmented - sold in 5 gallon pails.
Select colors are sold in 55 gallon drums.



Clear



Light Gray



Custom Color*

Custom Colors, Gloss and Texture

Custom colors are available for purchase. Gloss and texture can be adjusted, based on installation requirements. For more information, contact a local Master Builders Solutions sales representative

*Non-stocked materials

DISCLAIMER: All color reproductions are intended to provide an indication of color. Actual color and texture of products may vary from those shown in this brochure. Aesthetics are highly dependent on applicator installation procedures. Applied samples and test patches are recommended for color matching and final approvals for all Master Builders Solutions Performance Flooring Products.

Pre-Pigmented

MasterTop® TC 504 Colors

Pre-pigmented. Sold in 5 gallon pails.



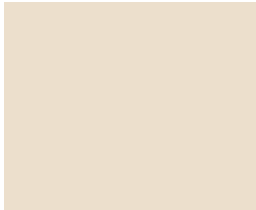
Gray



White



Light Gray*



Light Tan*



Red*



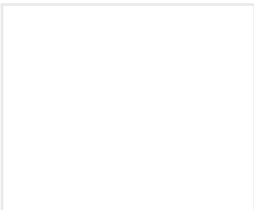
Bold Custom Color*



Light Custom Color*

MasterTop® TC 565 Colors

Available in clear and pre-pigmented. Sold in 5 gallon pails.



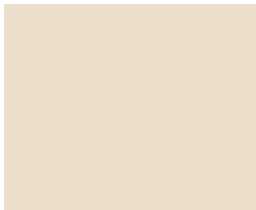
Clear



Gray



Light Gray



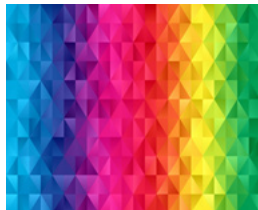
Light Tan



Red



Tan



Custom Color*

Custom Colors, Gloss and Texture

Custom colors are available for purchase. Gloss and texture can be adjusted, based on installation requirements. For more information, contact a local Master Builders Solutions sales representative

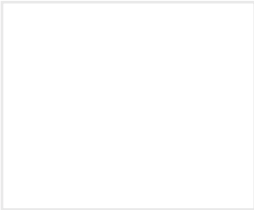
*Non-stocked materials

DISCLAIMER: All color reproductions are intended to provide an indication of color. Actual color and texture of products may vary from those shown in this brochure. Aesthetics are highly dependent on applicator installation procedures. Applied samples and test patches are recommended for color matching and final approvals for all Master Builders Solutions Performance Flooring Products.

Pre-Pigmented

MasterTop® TC 570 CR Colors

Available in clear and pre-pigmented. Sold in 5 gallon pails.



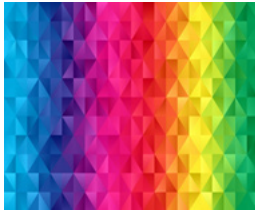
Clear



Gray



Red



Custom Color*

Custom Colors, Gloss and Texture

Custom colors are available for purchase. Gloss and texture can be adjusted, based on installation requirements. For more information, contact a local Master Builders Solutions sales representative

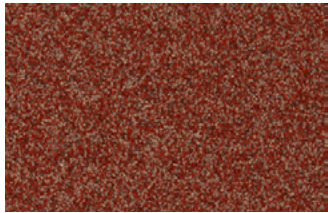
*Non-stocked materials

DISCLAIMER: All color reproductions are intended to provide an indication of color. Actual color and texture of products may vary from those shown in this brochure. Aesthetics are highly dependent on applicator installation procedures. Applied samples and test patches are recommended for color matching and final approvals for all Master Builders Solutions Performance Flooring Products.

Decorative Quartz Aggregate

MasterTop® DE 42CQ - Signature Blends

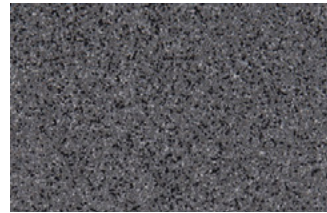
For use in Ucrete cementitious urethane, MasterTop SRS MMA, and MasterTop Epoxy, Polyurethane & Polyaspartic flooring systems requiring decorative quartz aggregate.



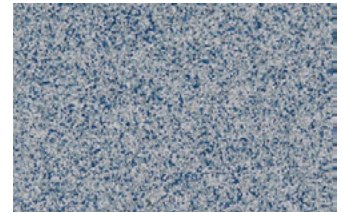
Cardinal



Everest



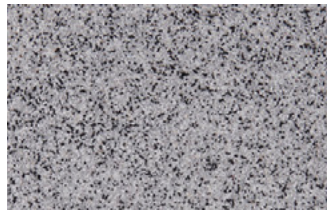
Grayhound



Ocean Breeze



Rocky Coast



Salt & Pepper



Tortilla



Water Chestnut



White Smoke



Standard Colors/Blends*



Custom Blends*

*Non-stocked materials

Standard Colors/Blends:

In addition to the signature quartz blends, Master Builders Solutions offers a large collection of standard colors and blends. To view all available options, reference the **Flake, Quartz, and Pigment Colors for Decorative Floors** brochure or **Flooring Color Visualizer Tool** at bit.ly/flooringvisualizer or contact your local Master Builders Solutions representative for more information.

Custom Colors:

Project specifications may require a specific color outside of the signature and standard collections. To design a custom color, reference the **Flooring Color Visualizer Tool** at bit.ly/flooringvisualizer or contact your local Master Builders Solutions representative for more information.

All quartz colors and blends can be ordered in the below size profiles:



40-S Broadcast
(40 Mesh, Spherical)



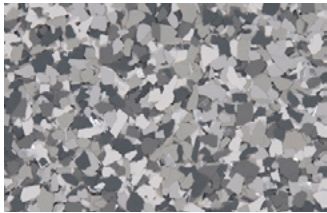
25-A Trowel
(25 Mesh, Angular)

DISCLAIMER: All color reproductions are intended to provide an indication of color. Actual color and texture of products may vary from those shown in this brochure. Aesthetics are highly dependent on applicator installation procedures. Applied samples and test patches are recommended for color matching and final approvals for all Master Builders Solutions Performance Flooring Products.

Decorative Flake Aggregate

MasterTop® DE 114FK - Signature Blends

Used as a broadcast to rejection over pigmented coatings and overlays for full flake flooring systems. These same flake blends can be used for select Ucrete cementitious urethane, MasterTop SRS MMA and Epoxy, Polyaspartic & Polyurethane flooring systems as well. **Signature blends are stocked in 1/4".**



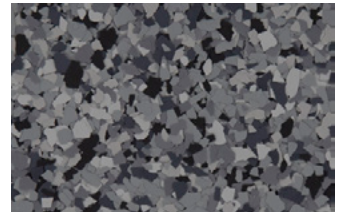
Blizzard



Campfire



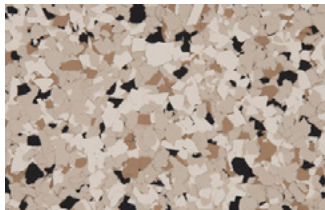
Crisp Air



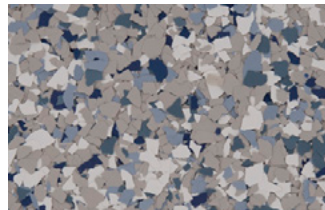
Curfew



Electric Blue



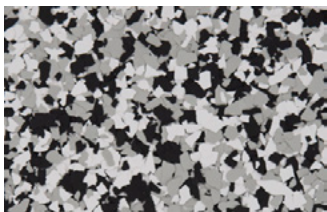
French Silk



Riverwalk



Shadow



Tuxedo



Standard Colors/Blends*



Custom Blends*

*Non-stocked materials

Standard Colors/Blends:

In addition to the signature quartz blends, Master Builders Solutions offers a large collection of standard colors and blends. To view all available options, reference the **Flake, Quartz, and Pigment Colors for Decorative Floors** brochure or **Flooring Color Visualizer Tool** at bit.ly/flooringvisualizer or contact your local Master Builders Solutions representative for more information.

Custom Colors:

Project specifications may require a specific color outside of the signature and standard collections. To design a custom color, reference the **Flooring Color Visualizer Tool** at bit.ly/flooringvisualizer or contact your local Master Builders Solutions representative for more information.

All flake colors and blends can be ordered in the below size profiles:



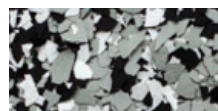
Original (1")



1/2"



1/4"



1/8"



1/16"



1/32"

DISCLAIMER: All color reproductions are intended to provide an indication of color. Actual color and texture of products may vary from those shown in this brochure. Aesthetics are highly dependent on applicator installation procedures. Applied samples and test patches are recommended for color matching and final approvals for all Master Builders Solutions Performance Flooring Products.



Master Builders Solutions

The Master Builders Solutions brand brings all of MBCC Groups expertise together to create chemical solutions for new construction, maintenance, repair and renovation of structures. Master Builders Solutions is built on the experience gained from more than a century in the construction industry.

The know-how and experience of a global community of MBCC Group construction experts form the core of Master Builders Solutions. We combine the right elements from our portfolio to solve your specific construction challenges. We collaborate across areas

of expertise and regions and draw on the experience gained from countless construction projects worldwide. We leverage global MBCC Group technologies, as well as our in-depth knowledge of local building needs, to develop innovations that help make you more successful and drive sustainable construction. The comprehensive portfolio under the Master Builders Solutions brand encompasses concrete admixtures, cement additives, chemical solutions for underground construction, waterproofing solutions, sealants, concrete repair and protection solutions, performance grouts and performance flooring solutions.

Master Builders Solutions products for the Construction Industry:

MasterAir®

Solutions for air-entrained concrete

MasterBrace®

Solutions for concrete strengthening

MasterCast®

Solutions for manufactured concrete product industry

MasterCem®

Solutions for cement manufacture

MasterEmaco®

Solutions for concrete repair

MasterFinish®

Solutions for formwork treatment

MasterFlow®

Solutions for precision grouting

MasterFiber®

Comprehensive solutions for fiber reinforced concrete

MasterGlenium®

Solutions for high-performance concrete

MasterInject®

Solutions for concrete injection

MasterKure®

Solutions for concrete curing

MasterLife®

Solutions for enhanced durability

MasterMatrix®

Advanced rheology control solutions for self-consolidating concrete

MasterPel®

Solutions for water tight concrete

MasterPolyheed®

Solutions for high-performance concrete

MasterPozzolith®

Solutions for water-reduced concrete

MasterProtect®

Solutions for concrete protection

MasterRheobuild®

Solutions for super-plasticized concrete

MasterRoc®

Solutions for underground construction

MasterSeal®

Solutions for waterproofing and sealing

MasterSet®

Solutions for retardation control

MasterSure®

Solutions for workability control

MasterTop®

Solutions for industrial and commercial floors

Ucrete®

Flooring solutions for harsh environments

Master Builders Solutions
Constructions Systems US, LLC
 889 Valley Park Drive
 Shakopee, MN 55379 USA

Customer Service (800) 433-9517
Technical Service (800) 243-6739
master-builders-solutions.com/EN-US



® registered trademark of a Group member
 in many countries of the world

© 2022 MBCC Group, 14000650 rev 11/2022

LIMITED WARRANTY NOTICE: Master Builders Solutions Construction Systems US, LLC ("Master Builders") warrants this product to be free from manufacturing defects and to meet the technical properties on the current Technical Data Guide, if used as directed within shelf life. Satisfactory results depend not only on quality products but also upon many factors beyond our control. Master Builders MAKES NO OTHER WARRANTY OR GUARANTEE, EXPRESS OR IMPLIED, INCLUDING WARRANTIES OF MERCHANTABILITY OR FITNESS FOR A PARTICULAR PURPOSE WITH RESPECT TO ITS PRODUCTS. The sole and exclusive remedy of Purchaser for any claim concerning this product, including but not limited to, claims alleging breach of warranty, negligence, strict liability or otherwise, is shipment to purchaser of product equal to the amount of product that fails to meet this warranty or refund of the original purchase price of product that fails to meet this warranty, at the sole option of Master Builders. Any claims concerning this product must be received in writing within one (1) year from the date of shipment and any claims not presented within that period are waived by Purchaser. Master Builders WILL NOT BE RESPONSIBLE FOR ANY SPECIAL, INCIDENTAL, CONSEQUENTIAL (INCLUDING LOST PROFITS) OR PUNITIVE DAMAGES OF ANY KIND.

Purchaser must determine the suitability of the products for the intended use and assumes all risks and liabilities in connection therewith. This information and all further technical advice are based on Master Builders present knowledge and experience. However, Master Builders assumes no liability for providing such information and advice including the extent to which such information and advice may relate to existing third party intellectual property rights, especially patent rights, nor shall any legal relationship be created by or arise from the provision of such information and advice. Master Builders reserves the right to make any changes according to technological progress or further developments. The Purchaser of the Product(s) must test the product(s) for suitability for the intended application and purpose before proceeding with a full application of the product(s). Performance of the product described herein should be verified by testing and carried out by qualified experts.