



Pebbletex CI-DCA with MaxGrip Veneer Mortar

Continuously Insulated System
with Adhered Veneer
Typical Details



Pebbletex CI-DCA with MaxGrip Veneer Mortar

Typical Details

Continuously Insulated System with Adhered Veneers

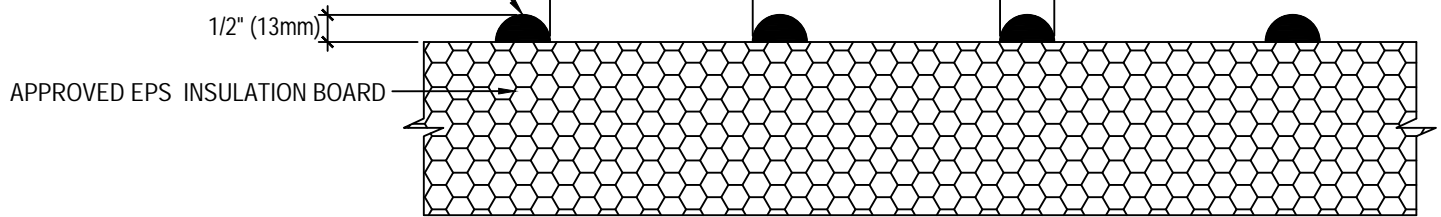
Table of Contents

1	Typical Adhesive Pattern	13	Typical Window Head (Flush) with Weeps
2	Typical Application	14	Typical Window Head (Flush) with Diverter Track
3	Typical Isometric View	15	Typical Window Jamb (Flush)
4	Typical Outside Corner Application	16	Typical Window Sill (Flush)
5	Typical Pipe Penetration	17	Typical Window Head (Recessed)
6	Typical Expansion Joint Detail (Plan View)	18	Typical Window Jamb (Recessed)
7	Typical Expansion Joint at Change in Substrate (Plan View)	19	Typical Window Sill Detail (Recessed)
8	Typical Expansion Joint Detail at Floorline	20	Typical Flanged Window Head
9	Typical Drainage at Floorline	21	Typical Flanged Window Jamb
10	Typical Termination at Foundation	22	Typical Flanged Window Sill
11	Typical Termination at Foundation (Flush)	23	Typical Coping Detail
12	Typical Window Head (Flush)	24	Typical Railing Attachment

Notes:

- Unsatisfactory conditions shall be reported to the General Contractor and corrected before the application of BASF products.
- Install BASF materials in accordance with current installation instructions.
- The details within represent BASF Corporation - Wall Systems (hereinafter BASF Wall Systems) latest recommendations. They are presented in good faith by BASF Wall Systems. The details are subject to change without notice. BASF Wall Systems accepts no liability for the end use of the details. For conditions not shown, consult BASF Wall Systems for review of specific detail.

VERTICAL RIBBONS OF FINESTONE
ADHESIVE / BASE COAT APPLIED TO
APPROVED EPS INSULATION BOARD



TYPICAL ADHESIVE PATTERN

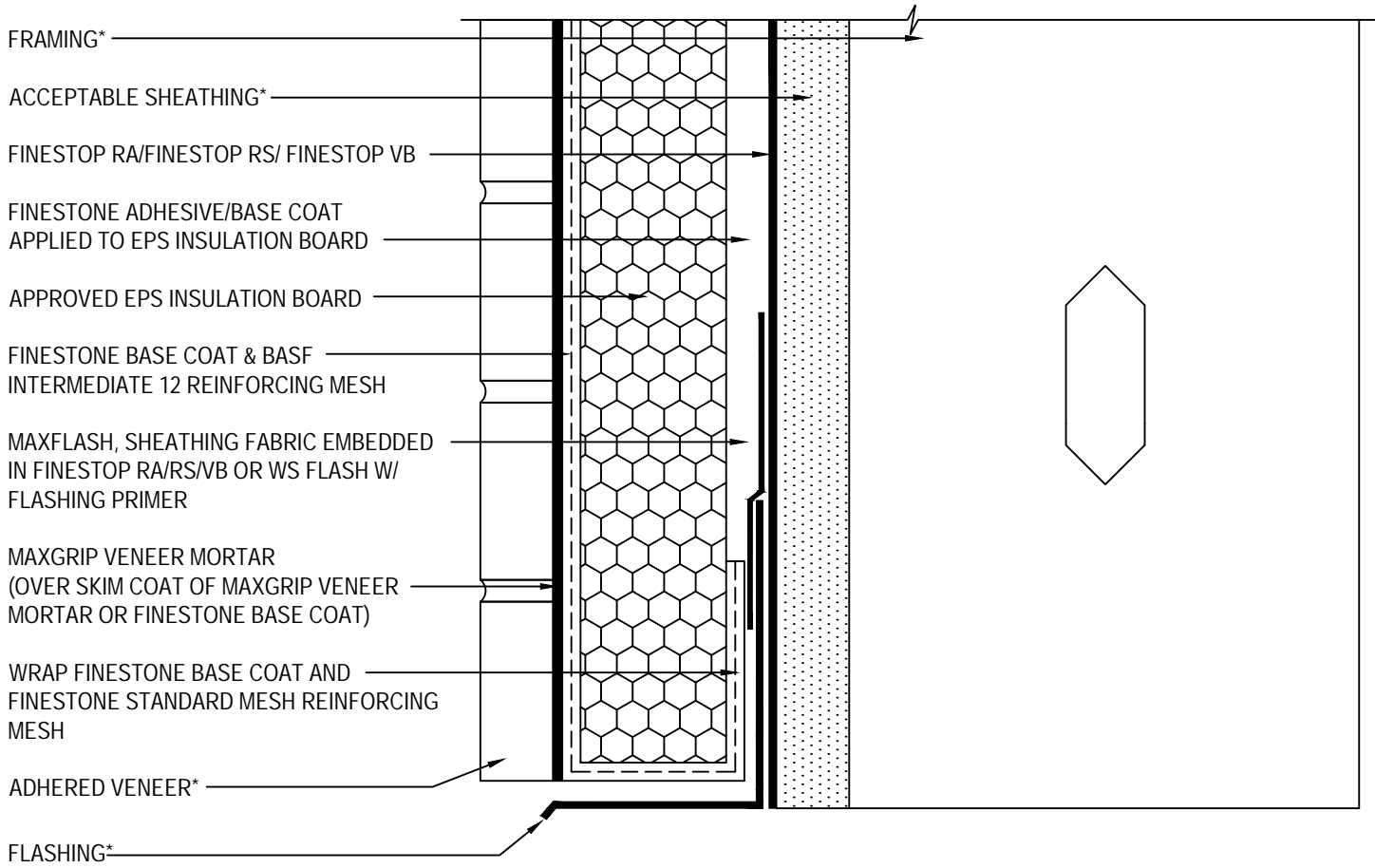
PEBBLETEx CI DCA WITH MAXGRIP VENEER MORTAR

SCALE: NTS

01

Structure, substrates, flashing, sealant, and other items which are not part of the Finestone Pebbletex CI DCA with MaxGrip Veneer Mortar system are the responsibility of others. This detail is subject to change without notice. BASF Corporation - Wall Systems accepts no liability for the end use of this detail. For conditions not shown, consult BASF Wall Systems for review of specific detail.

BASF
We create chemistry



*BY OTHERS

TYPICAL APPLICATION

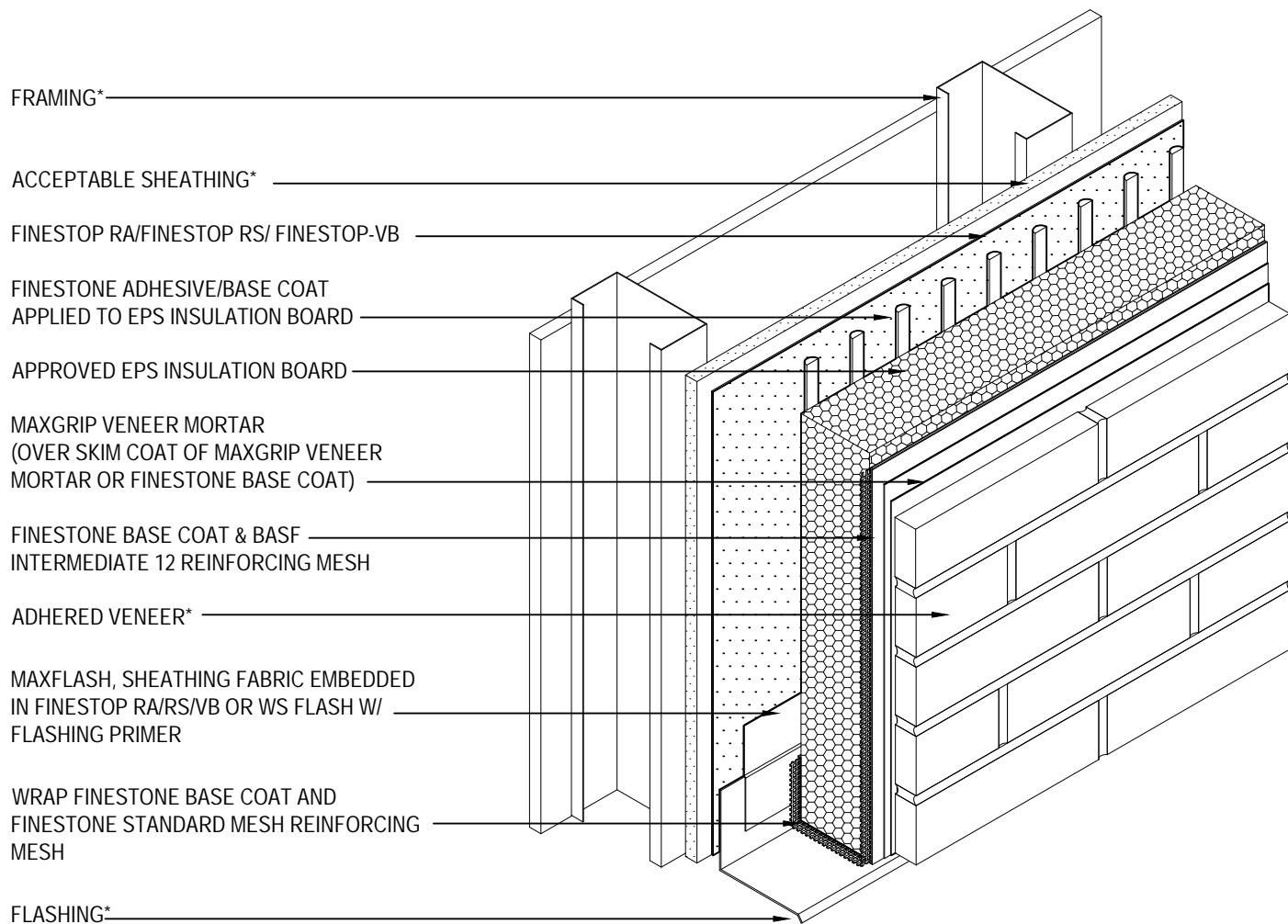
PEBBLETEX CI DCA WITH MAXGRIP VENEER MORTAR

SCALE: NTS

02

Structure, substrates, flashing, sealant, and other items which are not part of the Finestone Pebbletex CI DCA with MaxGrip Veneer Mortar system are the responsibility of others. This detail is subject to change without notice. BASF Corporation - Wall Systems accepts no liability for the end use of this detail. For conditions not shown, consult BASF Wall Systems for review of specific detail.

BASF
We create chemistry



*BY OTHERS

TYPICAL ISOMETRIC VIEW

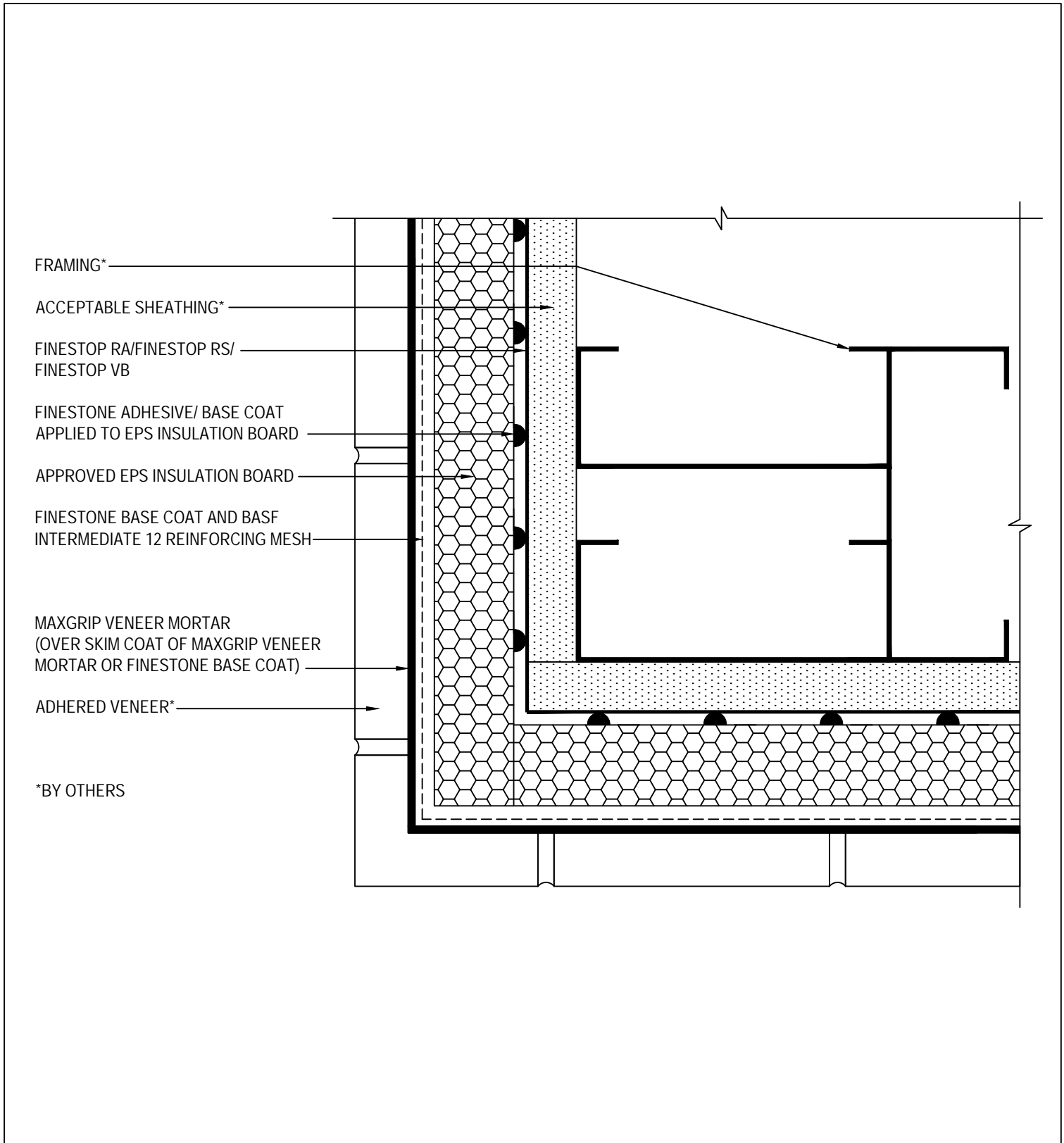
PEBBLETEX CI DCA WITH MAXGRIP VENEER MORTAR

SCALE: NTS

03

Structure, substrates, flashing, sealant, and other items which are not part of the Finestone Pebbletex CI DCA with MaxGrip Veneer Mortar system are the responsibility of others. This detail is subject to change without notice. BASF Corporation - Wall Systems accepts no liability for the end use of this detail. For conditions not shown, consult BASF Wall Systems for review of specific detail.

BASF
We create chemistry



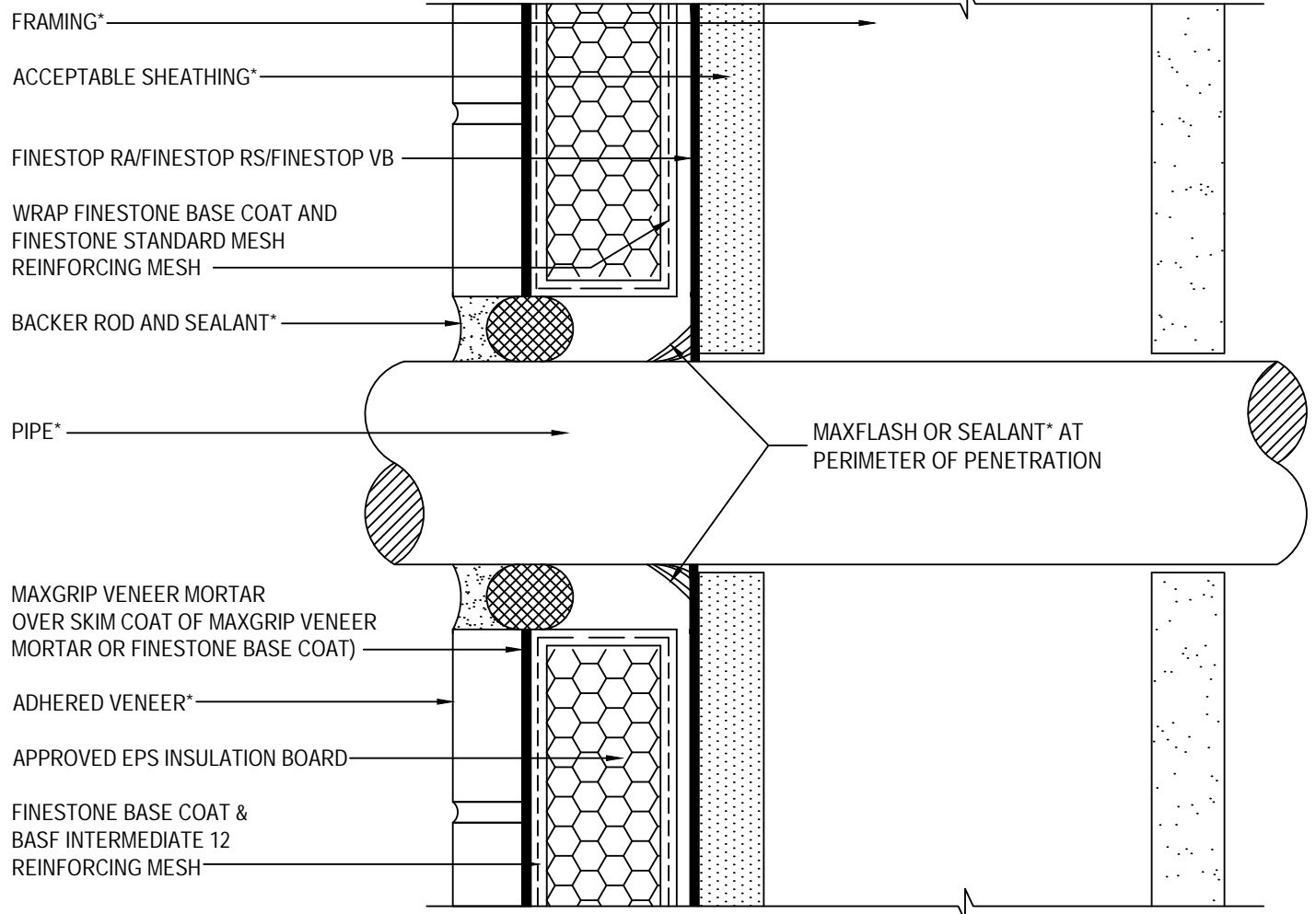
TYPICAL OUTSIDE CORNER APPLICATION PEBBLETEx CI DCA WITH MAXGRIP VENEER MORTAR

SCALE: NTS

04

Structure, substrates, flashing, sealant, and other items which are not part of the Finestone Pebbletex CI DCA with MaxGrip Veneer Mortar system are the responsibility of others. This detail is subject to change without notice. BASF Corporation - Wall Systems accepts no liability for the end use of this detail. For conditions not shown, consult BASF Wall Systems for review of specific detail.

BASF
We create chemistry



*BY OTHERS

TYPICAL PIPE PENETRATION

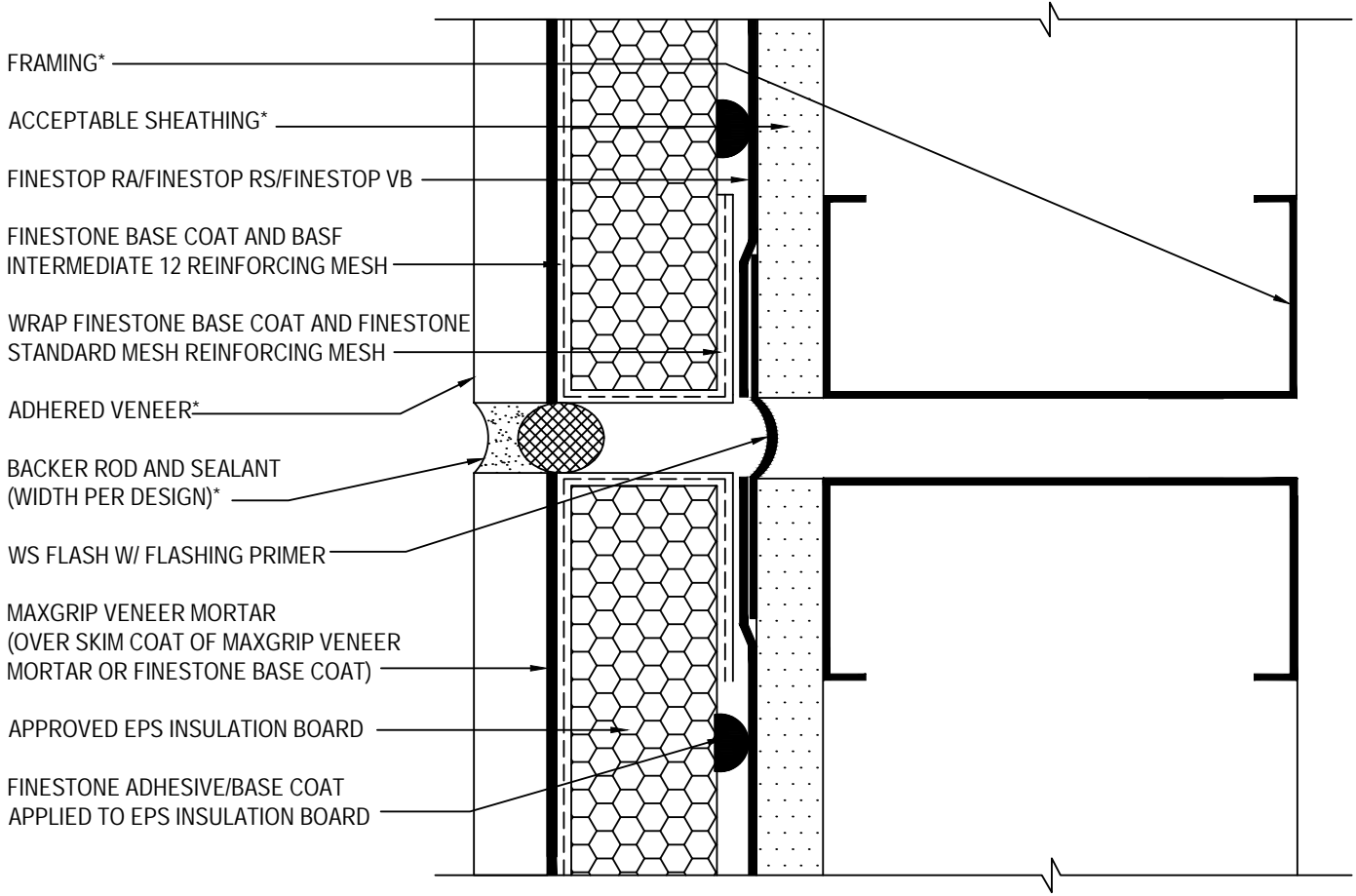
PEBBLETEX CI DCA WITH MAXGRIP VENEER MORTAR

SCALE: NTS

05

Structure, substrates, flashing, sealant, and other items which are not part of the Finestone Pebbletex CI DCA with MaxGrip Veneer Mortar system are the responsibility of others. This detail is subject to change without notice. BASF Corporation - Wall Systems accepts no liability for the end use of this detail. For conditions not shown, consult BASF Wall Systems for review of specific detail.

BASF
We create chemistry



*BY OTHERS

TYPICAL EXPANSION JOINT DETAIL (PLAN VIEW)

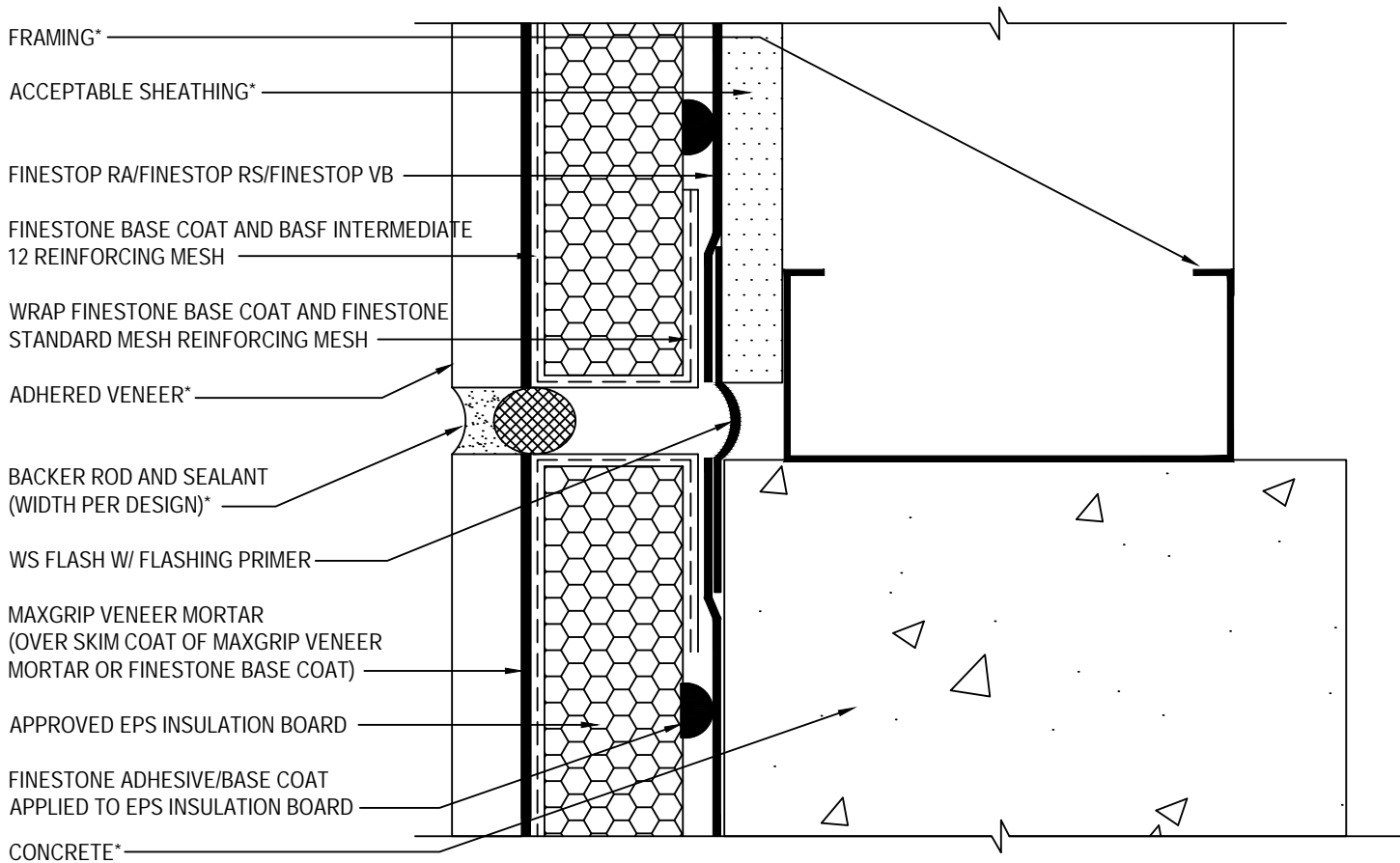
PEBBLETEx CI DCA WITH MAXGRIP VENEER MORTAR

SCALE: NTS

06

Structure, substrates, flashing, sealant, and other items which are not part of the Finestone Pebbletex CI DCA with MaxGrip Veneer Mortar system are the responsibility of others. This detail is subject to change without notice. BASF Corporation - Wall Systems accepts no liability for the end use of this detail. For conditions not shown, consult BASF Wall Systems for review of specific detail.





*BY OTHERS

TYPICAL EXPANSION JOINT AT CHANGE IN SUBSTRATE (PLAN VIEW)

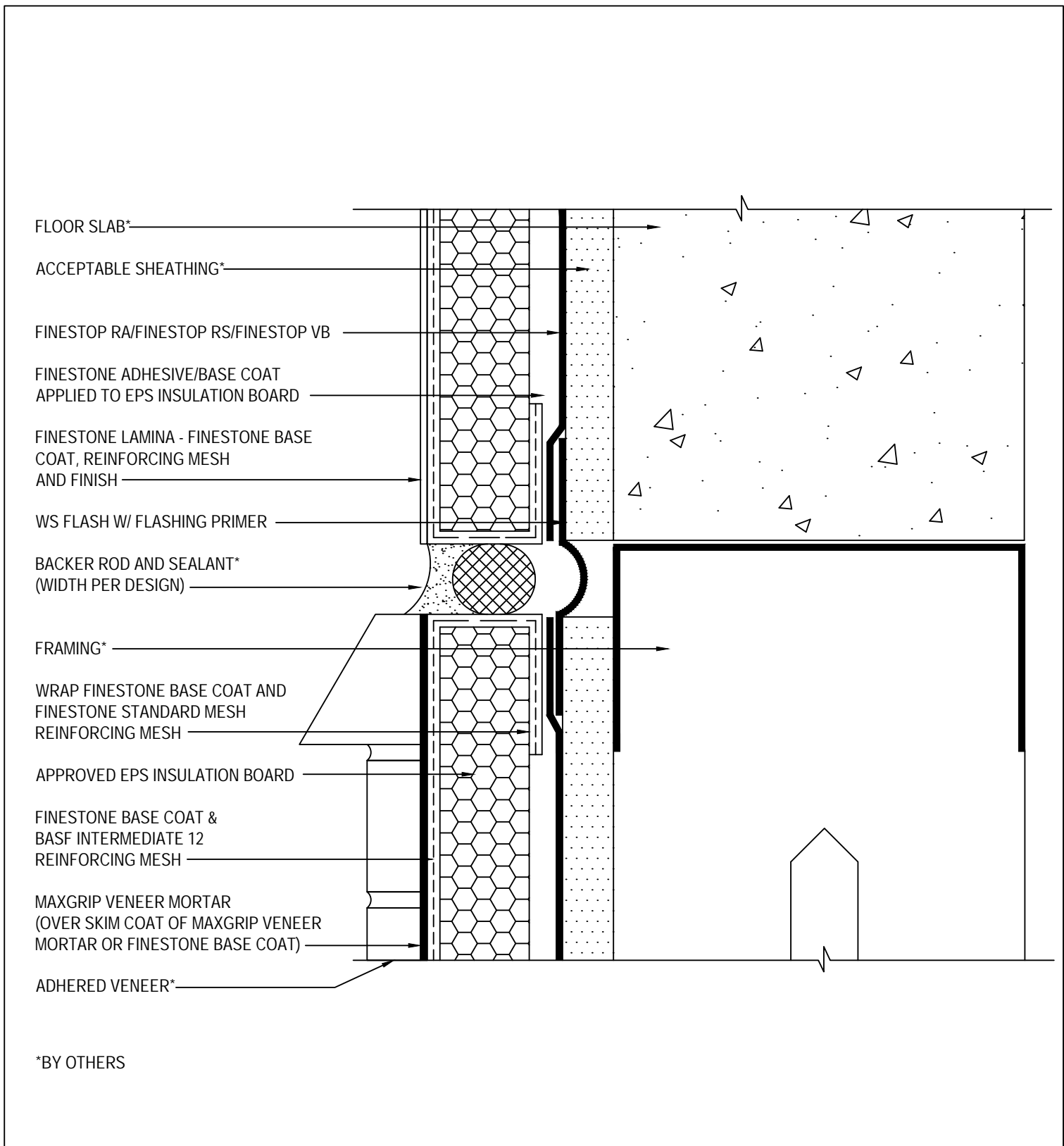
PEBBLETEx CI DCA WITH MAXGRIP VENEER MORTAR

SCALE: NTS

07

Structure, substrates, flashing, sealant, and other items which are not part of the Finestone PebbleTex CI DCA with MaxGrip Veneer Mortar system are the responsibility of others. This detail is subject to change without notice. BASF Corporation - Wall Systems accepts no liability for the end use of this detail. For conditions not shown, consult BASF Wall Systems for review of specific detail.

BASF
We create chemistry



TYPICAL EXPANSION JOINT DETAIL AT FLOORLINE

PEBBLETEx CI DCA WITH MAXGRIP VENEER MORTAR

SCALE: NTS

08

Structure, substrates, flashing, sealant, and other items which are not part of the Finestone Pebbletex CI DCA with MaxGrip Veneer Mortar system are the responsibility of others. This detail is subject to change without notice. BASF Corporation - Wall Systems accepts no liability for the end use of this detail. For conditions not shown, consult BASF Wall Systems for review of specific detail.

BASF
We create chemistry

FLOOR SLAB*

ACCEPTABLE SHEATHING*

FINESTOP RA/FINESTOP RS/FINESTOP VB

APPROVED EPS INSULATION BOARD

MAXFLASH, SHEATHING FABRIC
EMBEDDED IN FINESTOP RA/RS/VB OR
WS FLASH W/ FLASHING PRIMER

FINESTONE LAMINA - FINESTONE BASE
COAT, REINFORCING MESH AND FINISH

WS FLASH WITH FLASHING PRIMER

FLASHING*

BACKER ROD & SEALANT
(WIDTH PER DESIGN)*

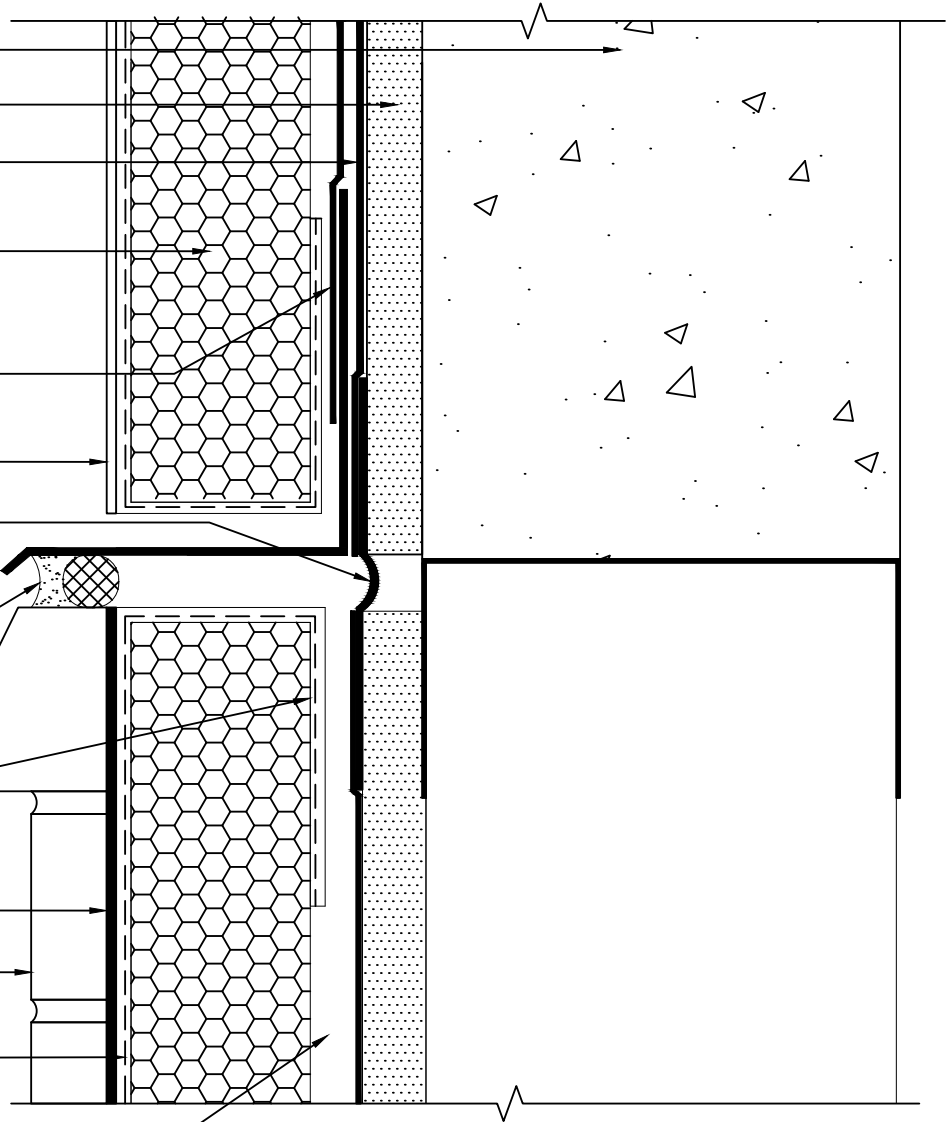
WRAP FINESTONE BASE COAT AND
FINESTONE STANDARD MESH
REINFORCING MESH

MAXGRIP VENEER MORTAR
(OVER SKIM COAT OF MAXGRIP VENEER
MORTAR OR FINESTONE BASE COAT)

ADHERED VENEER*

FINESTONE BASE COAT & BASF
INTERMEDIATE 12 REINFORCING MESH

FINESTONE ADHESIVE/BASE COAT
APPLIED TO EPS INSULATION BOARD



*BY OTHERS

TYPICAL DRAINAGE AT FLOORLINE

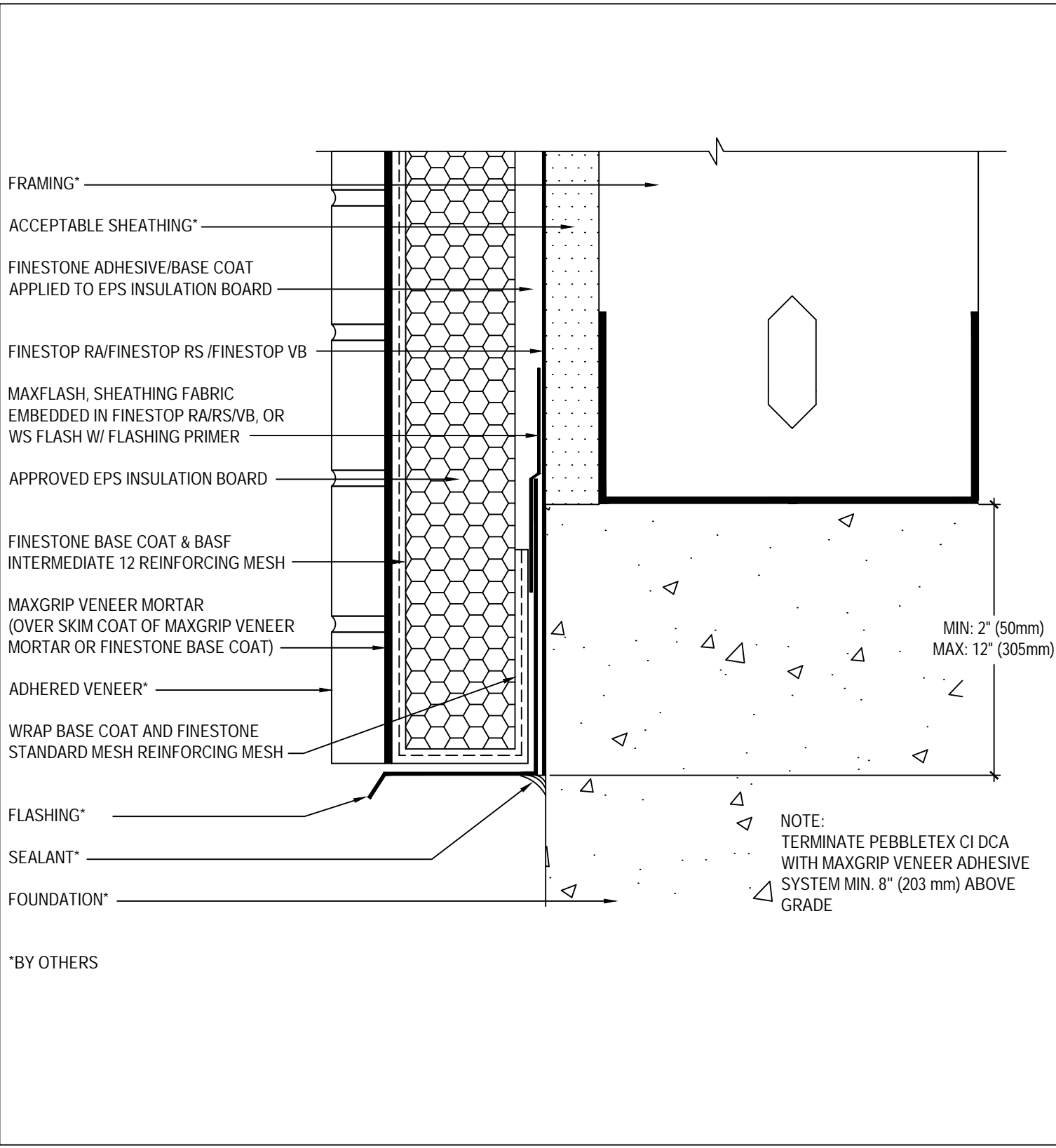
PEBBLETEx CI DCA WITH MAXGRIP VENEER MORTAR

SCALE: NTS

09

Structure, substrates, flashing, sealant, and other items which are not part of the Finestone Pebbletex CI DCA with MaxGrip Veneer Mortar system are the responsibility of others. This detail is subject to change without notice. BASF Corporation - Wall Systems accepts no liability for the end use of this detail. For conditions not shown, consult BASF Wall Systems for review of specific detail.

BASF
We create chemistry



TYPICAL TERMINATION AT FOUNDATION

PEBBLETEx CI DCA WITH MAXGRIP VENEER MORTAR

SCALE: NTS

10

Structure, substrates, flashing, sealant, and other items which are not part of the Finestone Pebbletex CI DCA with MaxGrip Veneer Mortar system are the responsibility of others. This detail is subject to change without notice. BASF Corporation - Wall Systems accepts no liability for the end use of this detail. For conditions not shown, consult BASF Wall Systems for review of specific detail.

■ • BASF

We create chemistry

FRAMING*

ACCEPTABLE SHEATHING*

FINESTONE ADHESIVE/BASE COAT
APPLIED TO EPS INSULATION BOARD

FINESTOP RA/FINESTOP RS/FINESTOP VB

APPROVED EPS INSULATION BOARD

FINESTONE BASE COAT &
BASF INTERMEDIATE 12
REINFORCING MESH

WS FLASH W/ FLASHING PRIMER

MAXGRIP VENEER MORTAR
(OVER SKIM COAT OF MAXGRIP VENEER
MORTAR OR FINESTONE BASE COAT)

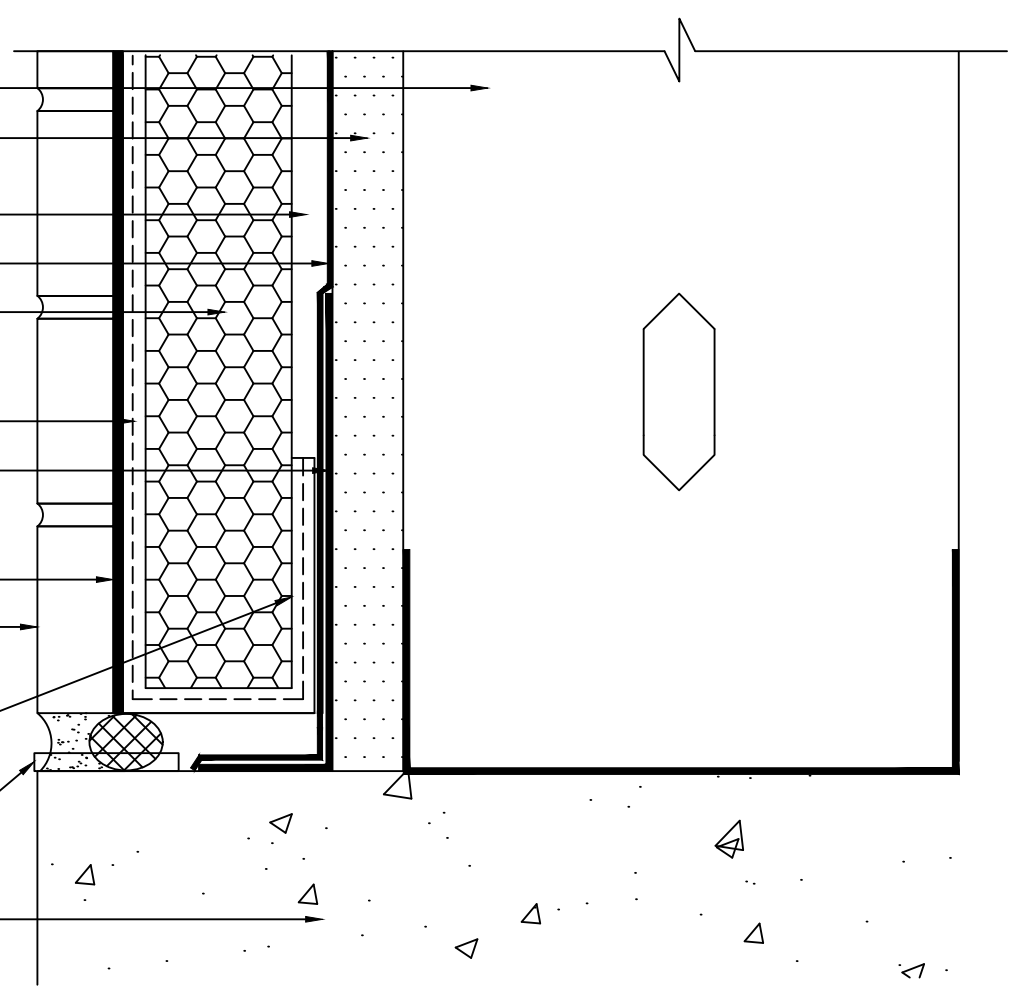
ADHERED VENEER*

WRAP BASE COAT AND
FINESTONE STANDARD MESH
REINFORCING MESH

BACKER ROD AND SEALANT
W/ WEEPS AT MAX. 24" O.C.
(WIDTH PER DESIGN)*

FOUNDATION*

*BY OTHERS



TYPICAL TERMINATION AT FOUNDATION (FLUSH)

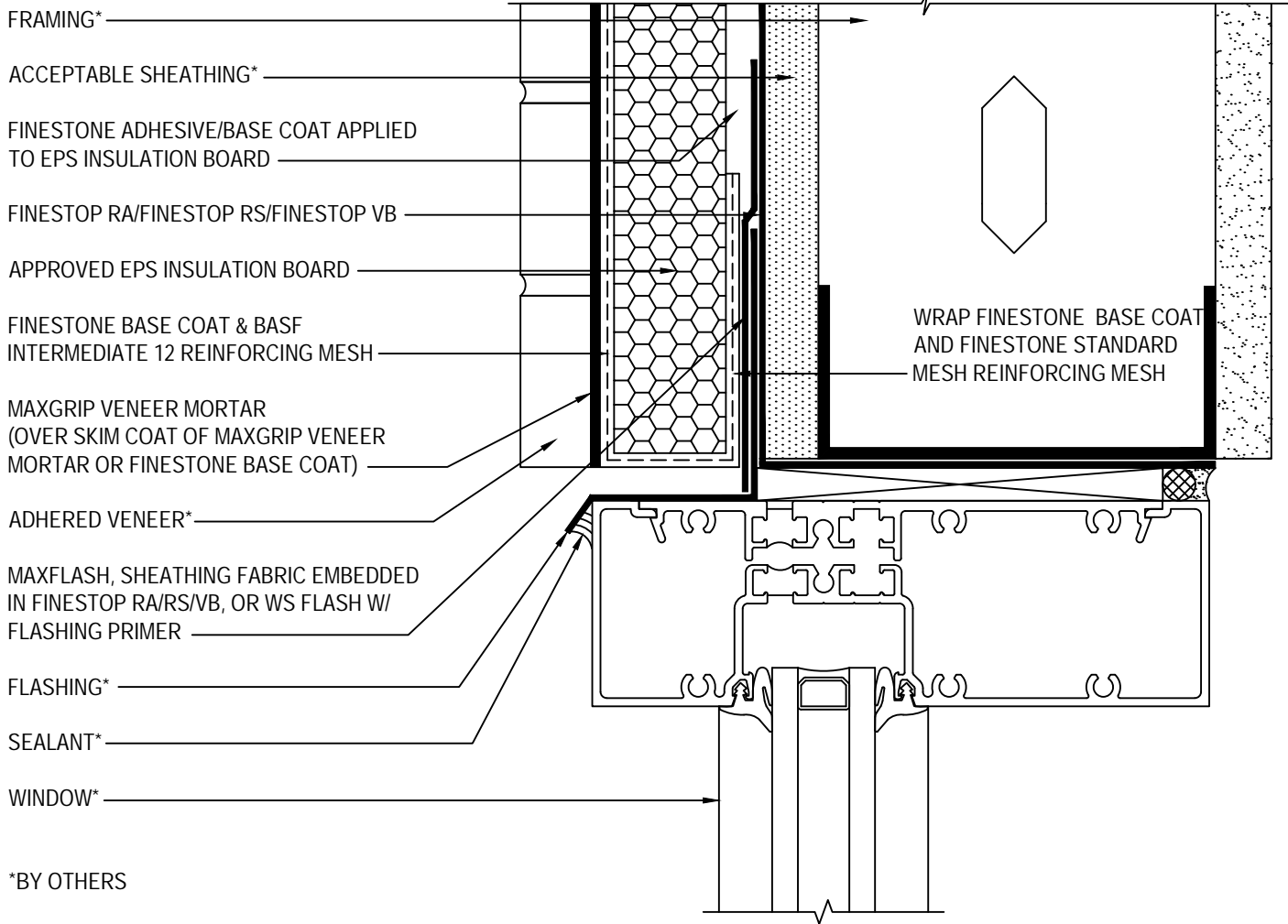
PEBBLETEX CI DCA WITH MAXGRIP VENEER MORTAR

SCALE: NTS

11

Structure, substrates, flashing, sealant, and other items which are not part of the Finestone Pebbletex CI DCA with MaxGrip Veneer Mortar system are the responsibility of others. This detail is subject to change without notice. BASF Corporation - Wall Systems accepts no liability for the end use of this detail. For conditions not shown, consult BASF Wall Systems for review of specific detail.

BASF
We create chemistry



*BY OTHERS

NOTE: WRAP MAXFLASH, SHEATHING FABRIC EMBEDDED IN FINESTOP RA/RS/VB OR WS FLASH W/ FLASHING PRIMER INTO ROUGH OPENING ON HEAD IF INTENDED TO BE AN AIR BARRIER.

TYPICAL WINDOW HEAD (FLUSH)

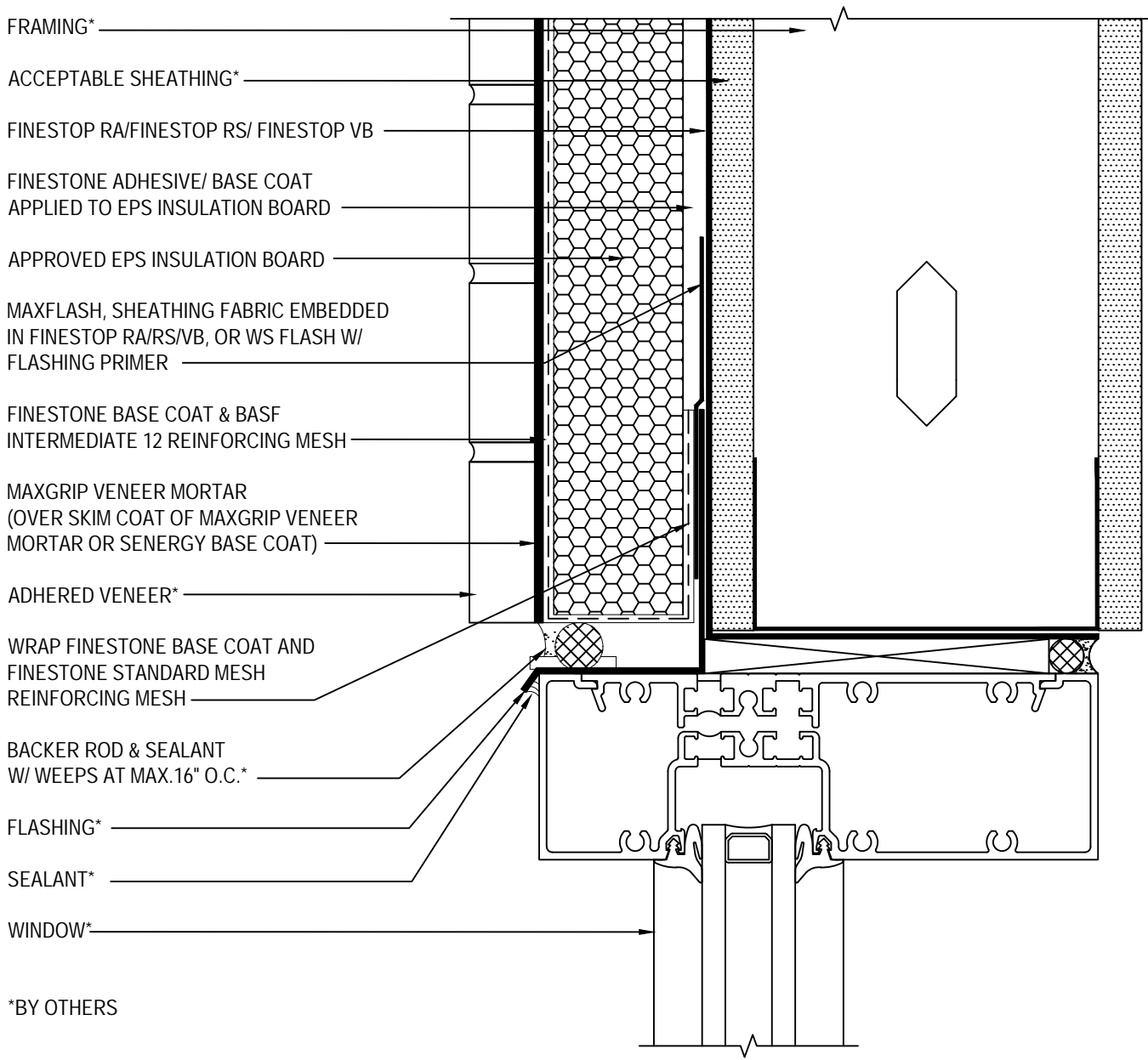
PEBBLETEx CI DCA WITH MAXGRIP VENEER MORTAR

SCALE: NTS

12

Structure, substrates, flashing, sealant, and other items which are not part of the Finestone Pebbletex CI DCA with MaxGrip Veneer Mortar system are the responsibility of others. This detail is subject to change without notice. BASF Corporation - Wall Systems accepts no liability for the end use of this detail. For conditions not shown, consult BASF Wall Systems for review of specific detail.

BASF
We create chemistry



*BY OTHERS

NOTE: WRAP MAXFLASH, SHEATHING FABRIC EMBEDDED IN FINESTOP RA/RS/VB OR WS FLASH W/ FLASHING PRIMER INTO ROUGH OPENING ON HEAD IF ALSO INTENDED TO BE AN AIR BARRIER.

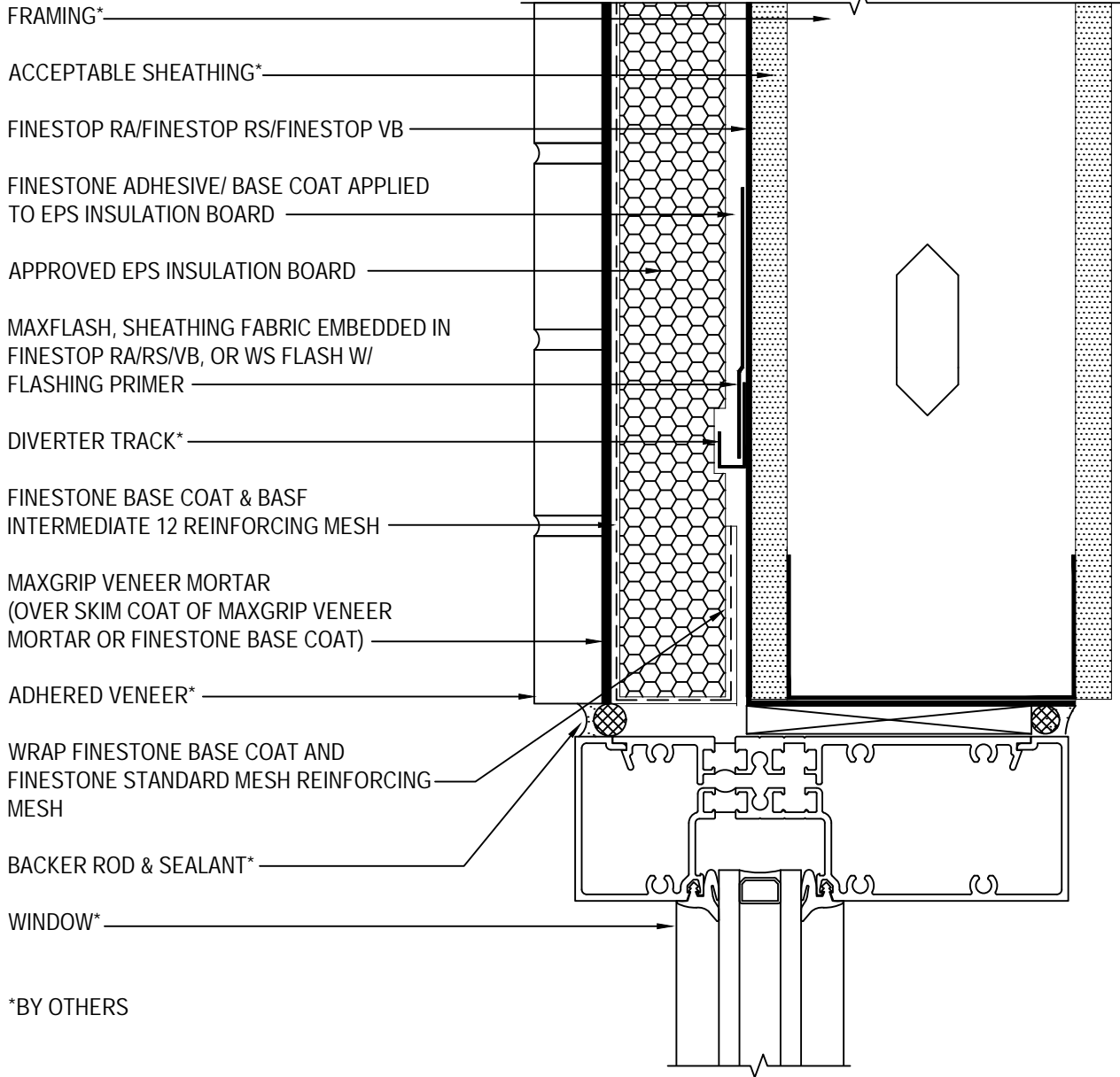
TYPICAL WINDOW HEAD (FLUSH) WITH WEEPS PEBBLETEx CI DCA WITH MAXGRIP VENEER MORTAR

SCALE: NTS

13

Structure, substrates, flashing, sealant, and other items which are not part of the Finestone Pebbletex CI DCA with MaxGrip Veneer Mortar system are the responsibility of others. This detail is subject to change without notice. BASF Corporation - Wall Systems accepts no liability for the end use of this detail. For conditions not shown, consult BASF Wall Systems for review of specific detail.

BASF
We create chemistry



NOTE: WRAP MAXFLASH, SHEATHING FABRIC EMBEDDED IN FINESTOP RA/RS/VB OR WS FLASH W/ FLASHING PRIMER INTO ROUGH OPENING ON HEAD IF ALSO INTENDED TO BE AN AIR BARRIER.

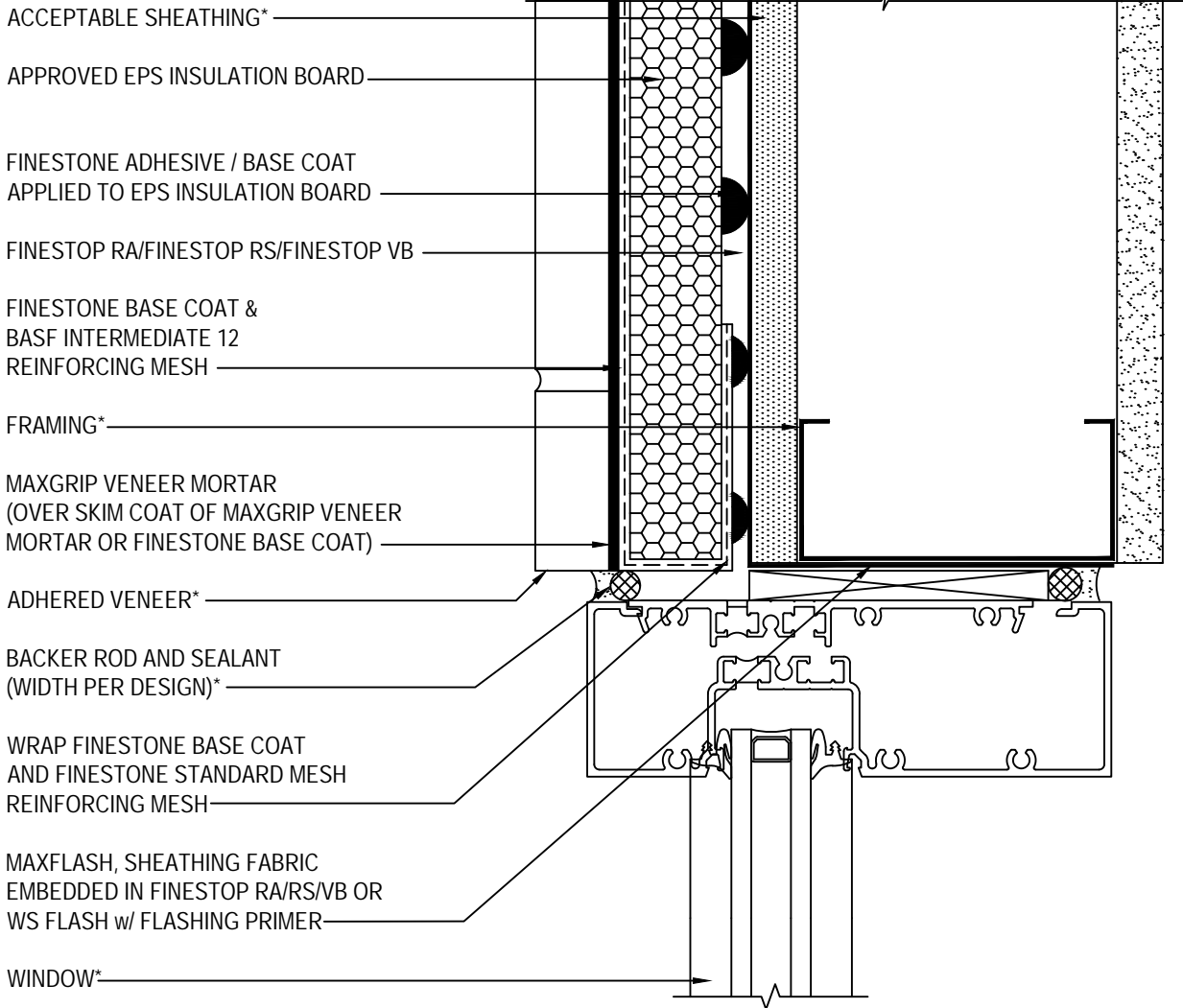
TYPICAL WINDOW HEAD (FLUSH) WITH DIVERTER TRACK PEBBLETEx CI DCA WITH MAXGRIP VENEER MORTAR

SCALE: NTS

14

Structure, substrates, flashing, sealant, and other items which are not part of the Finestone Pebbletex CI DCA with MaxGrip Veneer Mortar system are the responsibility of others. This detail is subject to change without notice. BASF Corporation - Wall Systems accepts no liability for the end use of this detail. For conditions not shown, consult BASF Wall Systems for review of specific detail.

BASF
We create chemistry



*BY OTHERS

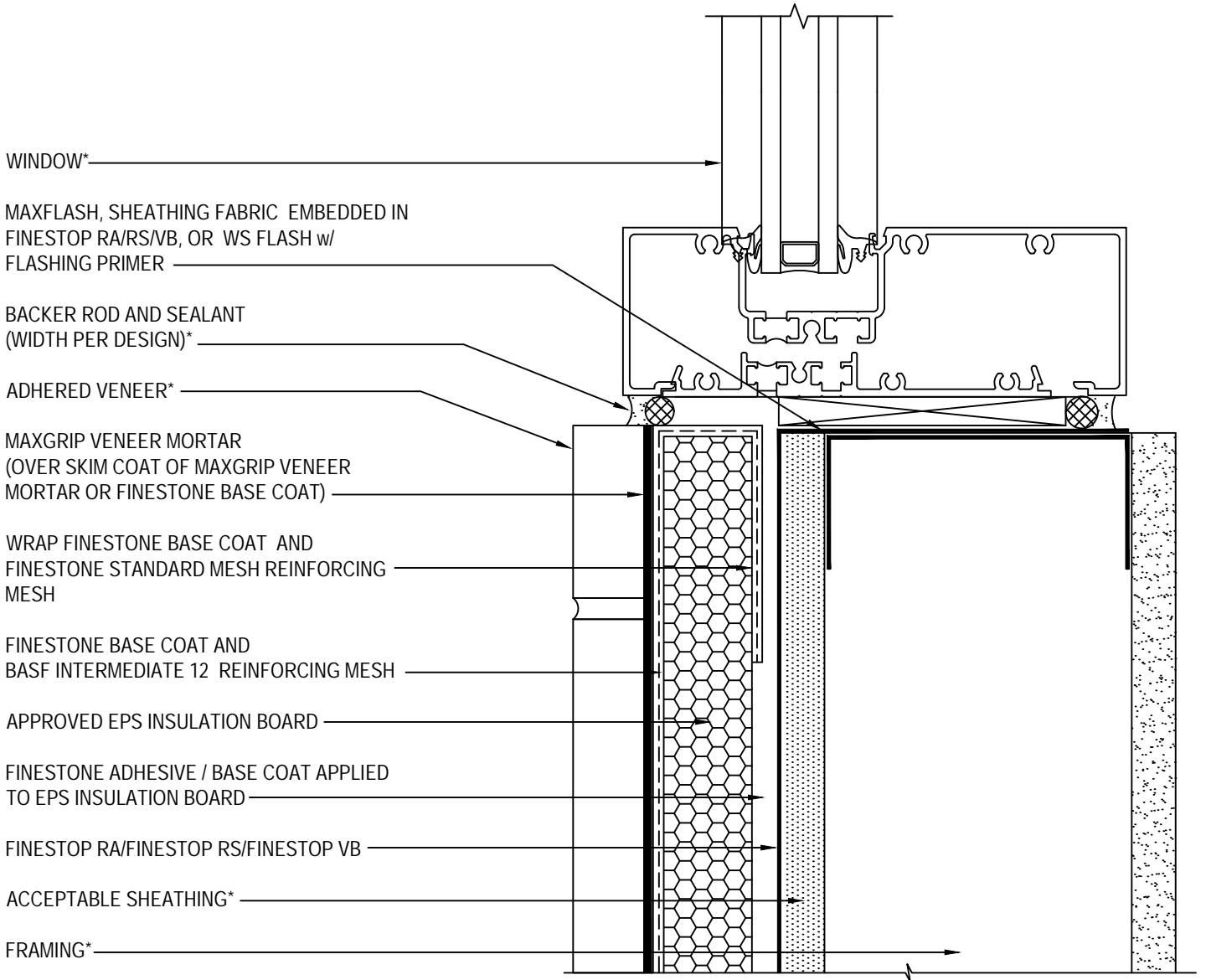
TYPICAL WINDOW JAMB (FLUSH)

PEBBLETEx CI DCA WITH MAXGRIP VENEER MORTAR

SCALE: NTS
15

Structure, substrates, flashing, sealant, and other items which are not part of the Finestone Pebbletex CI DCA with MaxGrip Veneer Mortar system are the responsibility of others. This detail is subject to change without notice. BASF Corporation - Wall Systems accepts no liability for the end use of this detail. For conditions not shown, consult BASF Wall Systems for review of specific detail.





*BY OTHERS

TYPICAL WINDOW SILL (FLUSH)

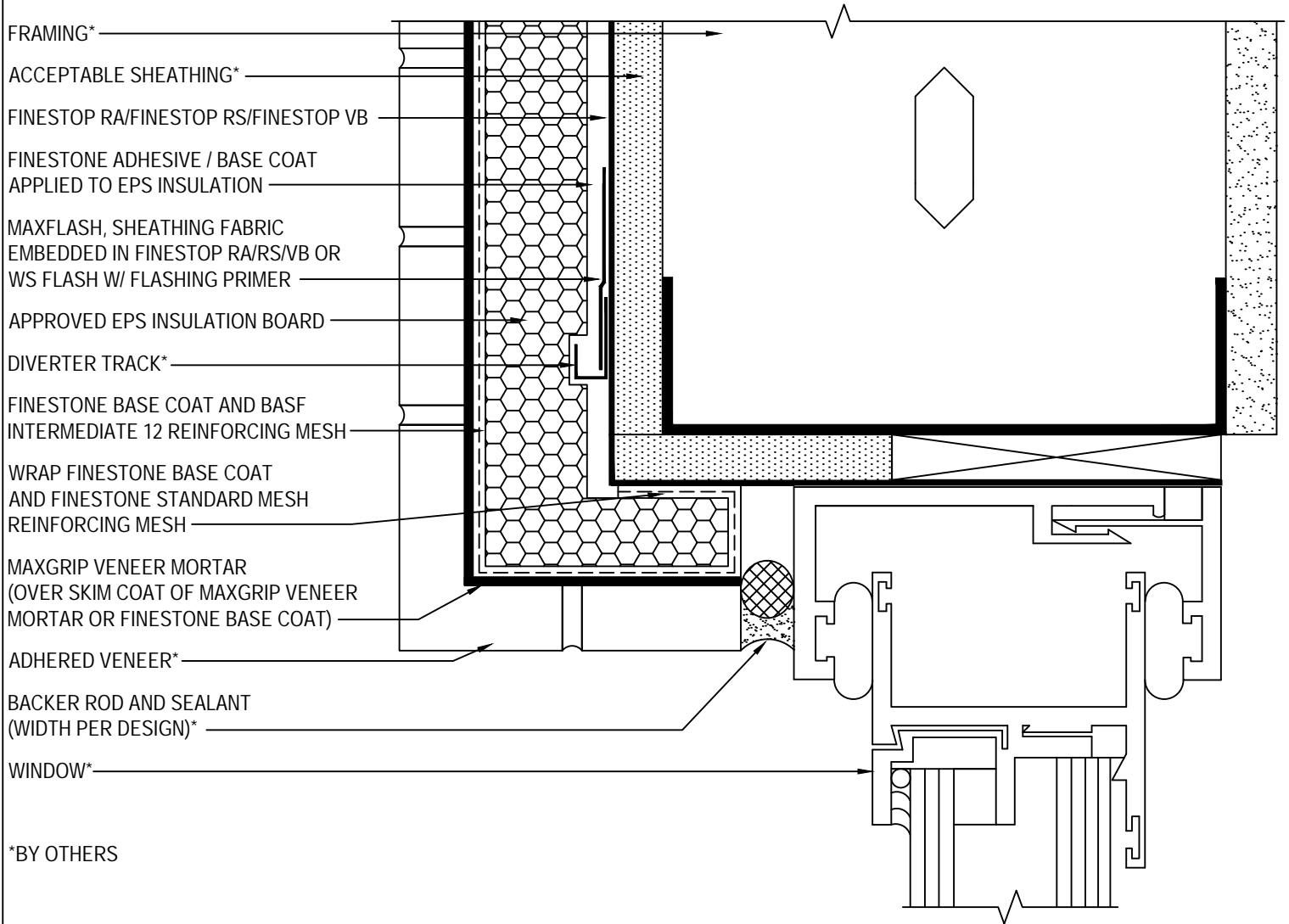
PEBBLETEx CI DCA WITH MAXGRIP VENEER MORTAR

SCALE: NTS

16

Structure, substrates, flashing, sealant, and other items which are not part of the Finestone Pebbletex CI DCA with MaxGrip Veneer Mortar system are the responsibility of others. This detail is subject to change without notice. BASF Corporation - Wall Systems accepts no liability for the end use of this detail. For conditions not shown, consult BASF Wall Systems for review of specific detail.

BASF
We create chemistry



*BY OTHERS

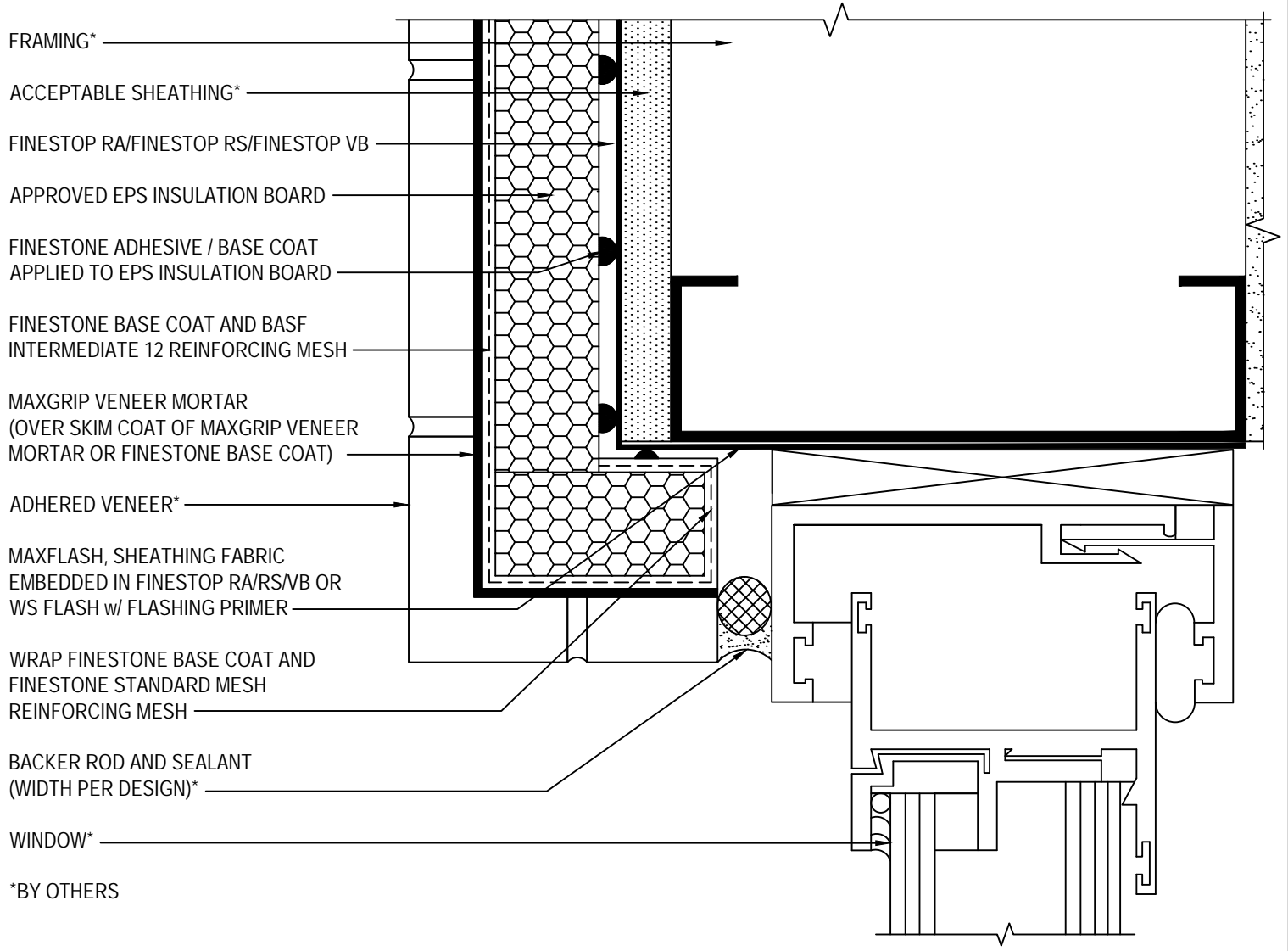
NOTE: WRAP MAXFLASH, SHEATHING FABRIC EMBEDDED IN FINESTOP RA/RS/VB OR WS FLASH W/ FLASHING PRIMER INTO ROUGH OPENING ON HEAD IF INTENDED TO BE AN AIR BARRIER.

TYPICAL WINDOW HEAD (RECESSED) PEBBLETEx CI DCA WITH MAXGRIP VENEER MORTAR

SCALE: NTS
17

Structure, substrates, flashing, sealant, and other items which are not part of the Finestone Pebbletex CI DCA with MaxGrip Veneer Mortar system are the responsibility of others. This detail is subject to change without notice. BASF Corporation - Wall Systems accepts no liability for the end use of this detail. For conditions not shown, consult BASF Wall Systems for review of specific detail.





TYPICAL WINDOW JAMB (RECESSED)
 PEBBLETEX CI DCA WITH MAXGRIP VENEER MORTAR

SCALE: NTS

18

Structure, substrates, flashing, sealant, and other items which are not part of the Finestone Pebbletex CI DCA with MaxGrip Veneer Mortar system are the responsibility of others. This detail is subject to change without notice. BASF Corporation - Wall Systems accepts no liability for the end use of this detail. For conditions not shown, consult BASF Wall Systems for review of specific detail.

BASF
 We create chemistry

WINDOW*

MAXFLASH, SHEATHING FABRIC
EMBEDDED IN FINESTOP RA/RS/VB OR WS
FLASH W/ FLASHING PRIMER

PAN FLASHING W/ END DAMS*

WRAP FINESTONE BASE COAT
AND FINESTONE STANDARD MESH
REINFORCING MESH

APPROVED EPS INSULATION BOARD

FINESTONE BASE COAT &
BASF INTERMEDIATE 12
REINFORCING MESH

MAXGRIP VENEER MORTAR
(OVER SKIM COAT OF MAXGRIP VENEER
MORTAR OR FINESTONE BASE COAT)

SEALANT*

FINESTONE RA/FINESTOP RS/FINESTOP VB

FINESTONE ADHESIVE/ BASE COAT
APPLIED TO EPS INSULATION BOARD

ACCEPTABLE SHEATHING*

ADHERED VENEER*

FRAMING*

*BY OTHERS

NOTES:

- EXTEND FLASHING MIN 2" (50 mm) OVER PEBBLETEX CI DCA WITH MAXGRIP VENEER MORTAR
- FLASHINGS ARE BY OTHERS AND SHALL BE AS PER DESIGN /CODE REQUIREMENT

TYPICAL WINDOW SILL DETAIL (RECESSED)

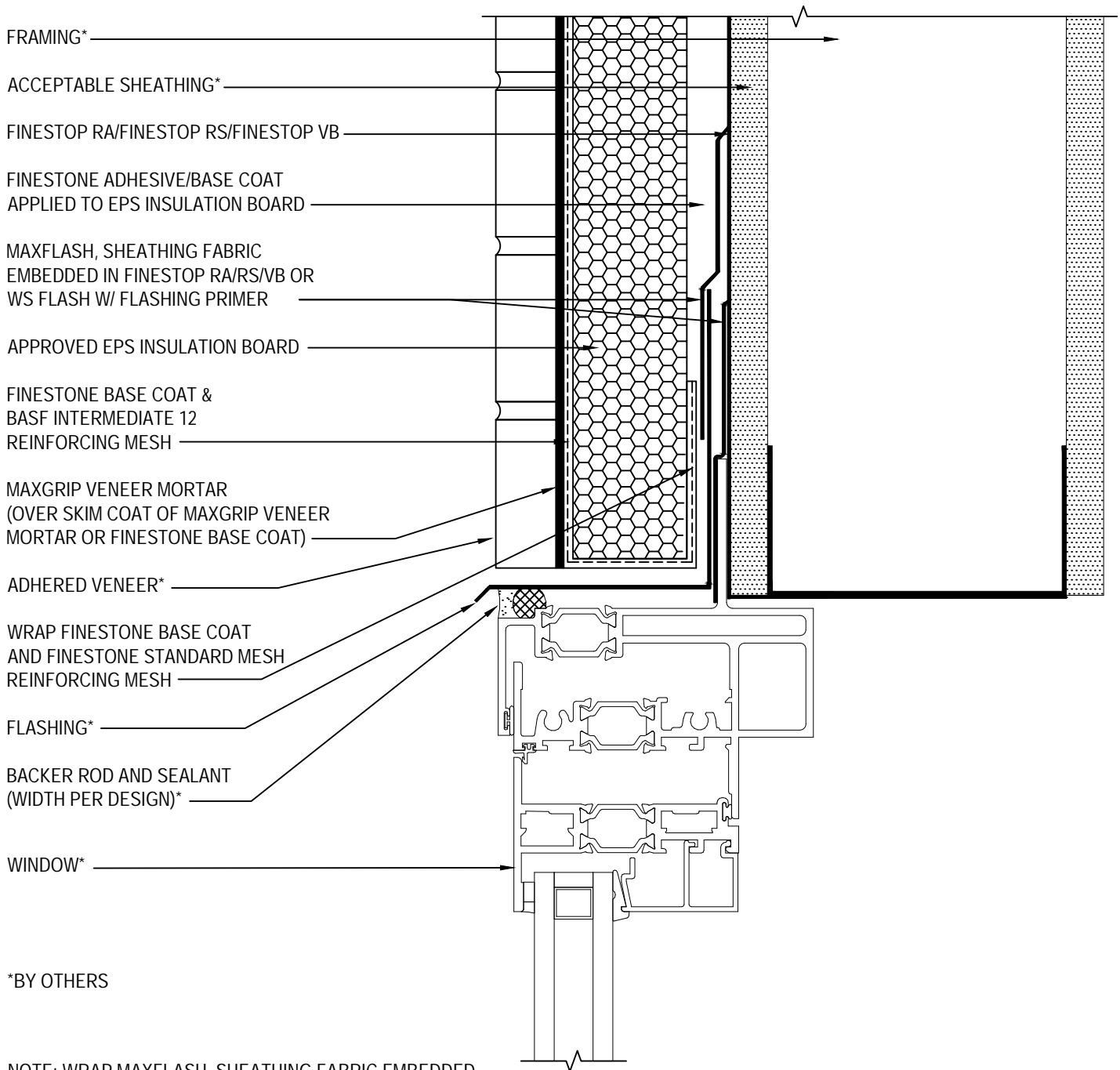
PEBBLETEx CI DCA WITH MAXGRIP VENEER MORTAR

SCALE: NTS

19

Structure, substrates, flashing, sealant, and other items which are not part of the Finestone Pebbletex CI DCA with MaxGrip Veneer Mortar system are the responsibility of others. This detail is subject to change without notice. BASF Corporation - Wall Systems accepts no liability for the end use of this detail. For conditions not shown, consult BASF Wall Systems for review of specific detail.

BASF
We create chemistry



*BY OTHERS

NOTE: WRAP MAXFLASH, SHEATHING FABRIC EMBEDDED IN FINESTOP RA/RS/VB OR WS FLASH W/ FLASHING PRIMER INTO ROUGH OPENING ON HEAD IF INTENDED TO BE AN AIR BARRIER.

TYPICAL FLANGED WINDOW HEAD PEBBLETEx CI DCA WITH MAXGRIP VENEER MORTAR

SCALE: NTS

20

Structure, substrates, flashing, sealant, and other items which are not part of the Finestone Pebbletex CI DCA with MaxGrip Veneer Mortar system are the responsibility of others. This detail is subject to change without notice. BASF Corporation - Wall Systems accepts no liability for the end use of this detail. For conditions not shown, consult BASF Wall Systems for review of specific detail.

BASF
We create chemistry

ACCEPTABLE SHEATHING*

APPROVED EPS INSULATION BOARD

FINESTONE ADHESIVE/BASE COAT
APPLIED TO EPS INSULATION BOARD

FINESTOP RA/FINESTOP RS/FINESTOP VB

FRAMING*

FINESTONE BASE COAT AND
BASF INTERMEDIATE 12
REINFORCING MESH

MAXGRIP VENEER MORTAR
(OVER SKIM COAT OF MAXGRIP VENEER
MORTAR OR FINESTONE BASE COAT)

ADHERED VENEER*

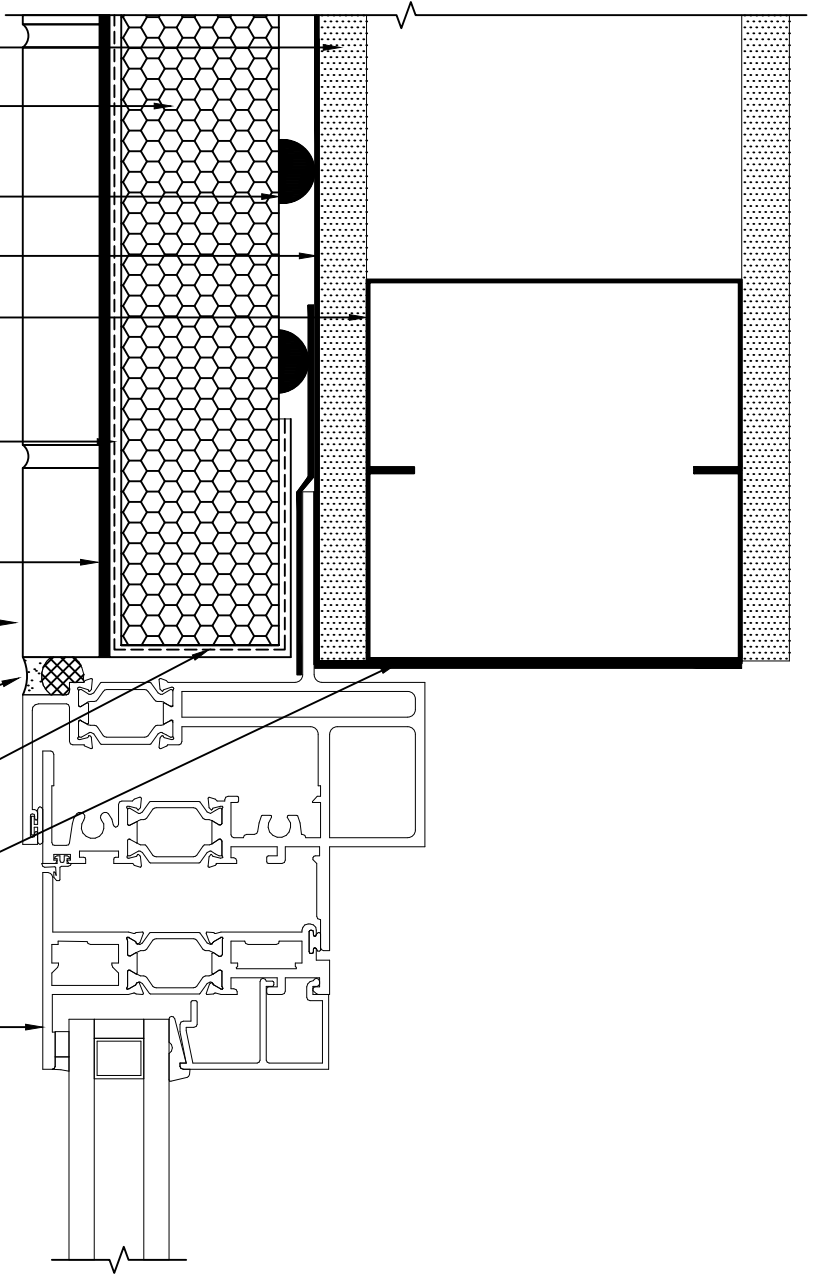
BACKER ROD AND SEALANT
(WIDTH PER DESIGN)*

WRAP FINESTONE BASE COAT
AND FINESTONE STANDARD MESH
REINFORCING MESH

MAXFLASH, SHEATHING FABRIC
EMBEDDED IN FINESTOP RA/RS/VB OR
WS FLASH W/ FLASHING PRIMER

WINDOW*

*BY OTHERS



TYPICAL FLANGED WINDOW JAMB

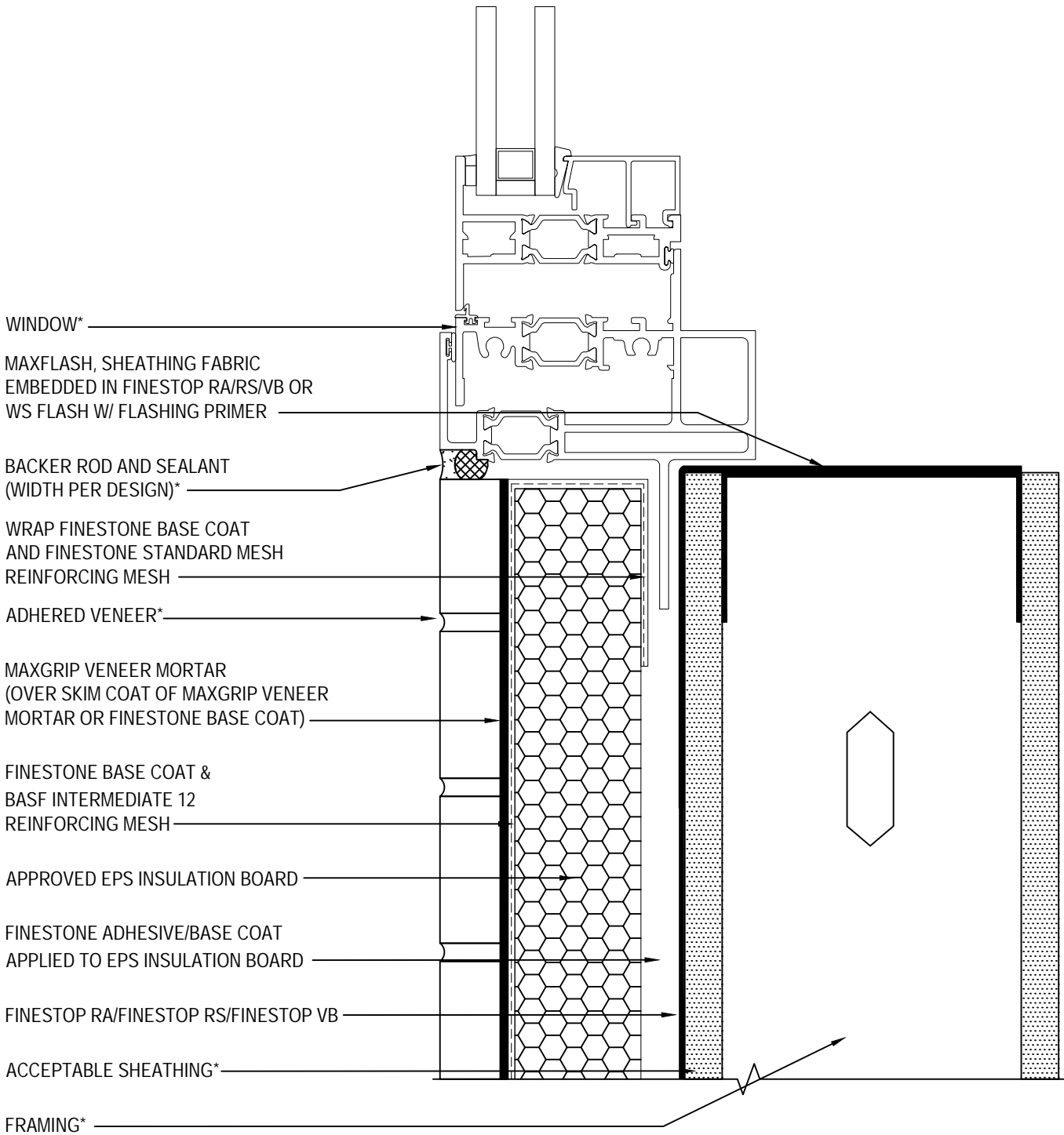
PEBBLETEx CI DCA WITH MAXGRIP VENEER MORTAR

SCALE: NTS

21

Structure, substrates, flashing, sealant, and other items which are not part of the Finestone Pebbletex CI DCA with MaxGrip Veneer Mortar system are the responsibility of others. This detail is subject to change without notice. BASF Corporation - Wall Systems accepts no liability for the end use of this detail. For conditions not shown, consult BASF Wall Systems for review of specific detail.

BASF
We create chemistry



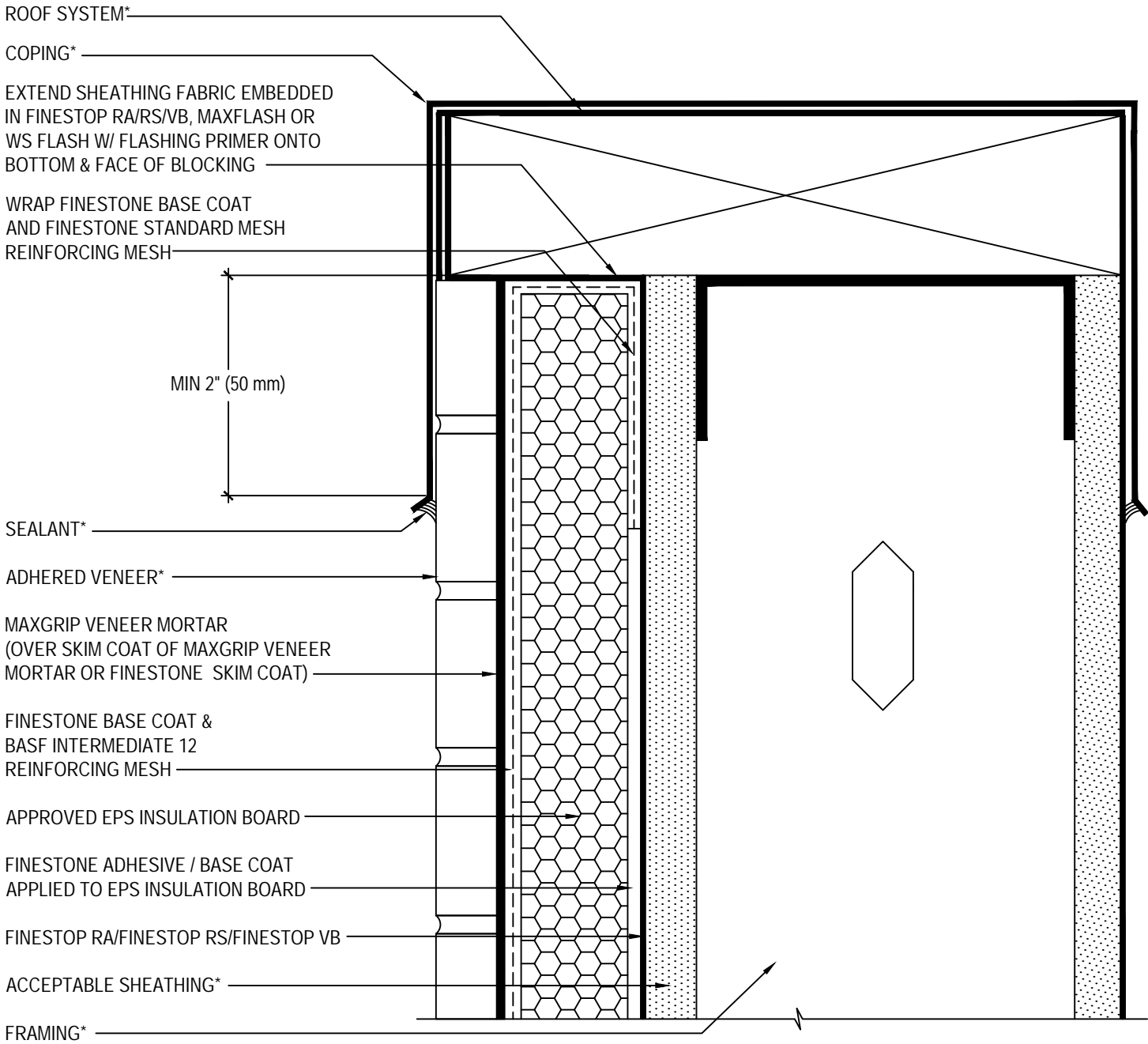
*BY OTHERS

TYPICAL FLANGED WINDOW SILL PEBBLETEx CI DCA WITH MAXGRIP VENEER MORTAR

SCALE: NTS
22

Structure, substrates, flashing, sealant, and other items which are not part of the Finestone PebbleTex CI DCA with MaxGrip Veneer Mortar system are the responsibility of others. This detail is subject to change without notice. BASF Corporation - Wall Systems accepts no liability for the end use of this detail. For conditions not shown, consult BASF Wall Systems for review of specific detail.





*BY OTHERS

TYPICAL COPING DETAIL

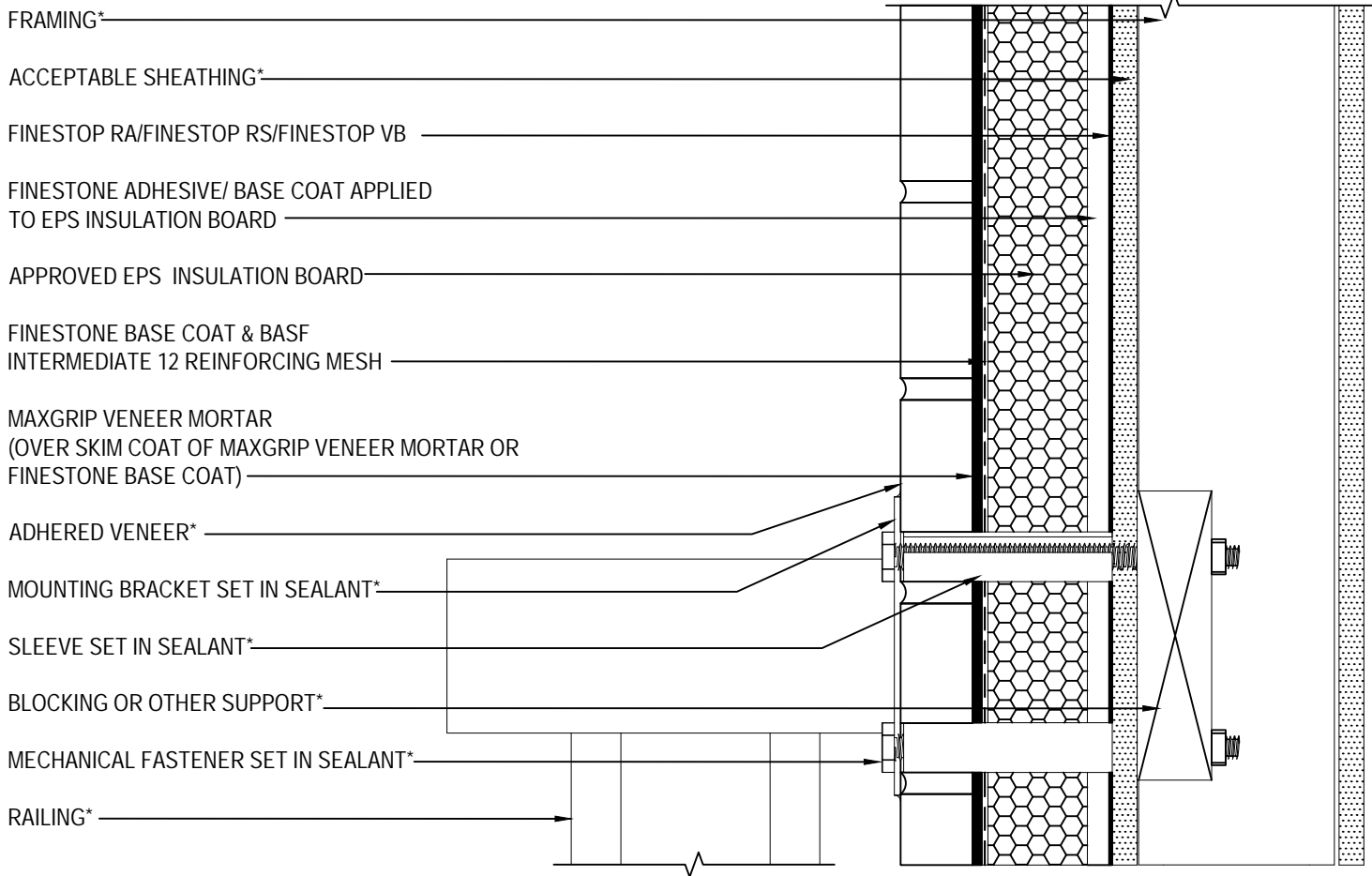
PEBBLETEx CI DCA WITH MAXGRIP VENEER MORTAR

SCALE: NTS

23

Structure, substrates, flashing, sealant, and other items which are not part of the Finestone Pebbletex CI DCA with MaxGrip Veneer Mortar system are the responsibility of others. This detail is subject to change without notice. BASF Corporation - Wall Systems accepts no liability for the end use of this detail. For conditions not shown, consult BASF Wall Systems for review of specific detail.

BASF
We create chemistry



*BY OTHERS

TYPICAL RAILING ATTACHMENT PEBBLETEx CI DCA WITH MAXGRIP VENEER MORTAR

SCALE: NTS

24

Structure, substrates, flashing, sealant, and other items which are not part of the Finestone Pebbletex CI DCA with MaxGrip Veneer Mortar system are the responsibility of others. This detail is subject to change without notice. BASF Corporation - Wall Systems accepts no liability for the end use of this detail. For conditions not shown, consult BASF Wall Systems for review of specific detail.

■ - BASF

We create chemistry

BASF Corporation - Wall Systems

889 Valley Park Drive
Shakopee, MN 55379

Phone: 888.338.7170

www.finestone.basf.com

©2019 BASF Corporation

rev 09/2019