

# Pebbletex Vulcan NC

Continuously insulated, water-drainage exterior wall cladding featuring noncombustible mineral wool insulation and Finestone air/water-resistive barrier

## System Description

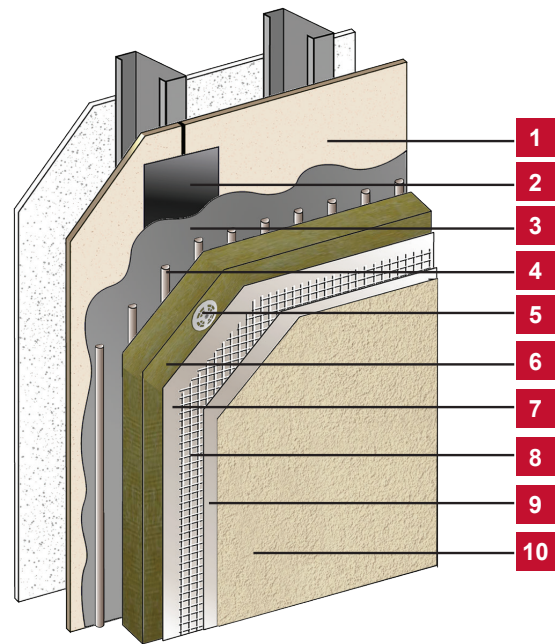
Pebbletex Vulcan NC is a continuously insulated, water-drainage wall cladding. The system utilizes ROCKWOOL Frontrrock™ continuous exterior insulation and Finestone Finestop fluid-applied air/water-resistive barrier that provides continuous air and moisture protection..

## Uses

May be used in fire-resistance-rated construction and in any construction type, including IBC Types I through V, when installed in accordance with Master Builders Solutions Wall Systems' instructions. For use on above grade vertical walls

## Acceptable Substrates

Poured concrete/unit masonry; ASTM C1177 type sheathings, including DensGlass™ exterior sheathing, DensElement (sheathing only), eXP™ sheathing, GlasRoc® sheathing, Securock™ glass-mat sheathing, Weather Defense™ Platinum sheathing, GreenGlass® sheathing; cement-boards (ASTM C1325 Type A Exterior) including PermaBase™ cement-board; untreated Exposure I or exterior plywood sheathing (grade C-D or better); untreated Exposure I OSB, Huber Zip (sheathing only); Fire Treated wood sheathing: Pyro-Guard® and Dricon® plywood and FlameBlock® OSB; gypsum sheathing (ASTM C79/ASTM C1396).



1. Acceptable Substrate\*
2. Approved Joint Reinforcement: MaxFlash, Sheathing Fabric embedded in Finestop RA/RS/VB or MasterSeal AWB 970 NP
3. Finestop RA/RS/VB
4. Finestone Adhesive
5. Mechanical Fastener\*
6. ROCKWOOL Frontrrock™\*
7. Finestone Base Coat
8. Finestone Reinforcing Mesh
9. Finestone Base Coat
10. Finestone Finish Coat

\* By Others

\*\* By Others. Requires the use of 9 fasteners per board; 4 through the insulation, 5 through the reinforced base coat. Refer to the Technical Bulletin; Pebbletex Vulcan NC Installation Guide for full installation details.

## Code Compliance

Document	Code Description
ICC-ESR 2186	Complies with IBC and IRC
ASTM E2568 / AC 235	Complies with requirements
ASTM E119	Does not detract from fire rating of base wall
ICC-ESR 2986 (Finestop RA/RS)	Air/water-resistive barrier*
NFPA 285/268	Meets requirements for use on fire-resistance-rated construction and in any construction type, including IBC Types I through V
ASTM E136	Insulation defined as noncombustible
ASTM C612	ROCKWOOL insulation is compliant for mineral fiber block and board thermal insulation
For testing results, please reference Pebbletex Vulcan NC specification.	

\* Finestop RA/RS/VB can be used behind all claddings where more than one wall system is specified, creating one continuous AWRB system. This is appropriate whenever Finestone Pebbletex Vulcan NC is used with other cladding types on a multi-clad building.

# Pebbletex Vulcan NC

## Warranty

12-Year Limited, Labor Material and Drainage.

## Material Substitution

Material substitution will adversely affect system performance and will void all warranty coverage unless approved in writing by Master Builders Solutions Wall Systems.

## Acceptable Mineral Wool

ROCKWOOL Frontrack™\*

Insulation Type	Density	R-Value	Thickness Min	Thickness Max
Mono Density	8.5 lbs/ft <sup>3</sup>	4 per inch	1.5"	4"
Dual Density	9.3 lbs/ft <sup>3</sup> outer layer 5.9 lbs/ft <sup>3</sup> inner layer	4 per inch	2.5"	4"

ASTM C612 Type IVA; non-combustible per ASTM E136; Flame Spread 0, Smoke Developed ≤ 15 per ASTM E84. Size 2' x 4' (0.6 m x 1.22 m)

For additional insulation requirements, please reference Pebbletex Vulcan NC specification

\*For full testing results refer to the Frontrack™ Technical Data Sheet. [rockwool.com/products/frontrack](http://rockwool.com/products/frontrack)

## Limitations / Design Considerations

- For use on above grade vertical walls. System must terminate a minimum of 6-inches (152 mm) above grade.
- Not compatible with MaxGrip Veneer Mortar and adhered veneer.
- All products must be installed at minimum 40°F (4°C) ambient and substrate temperatures unless otherwise noted on specific Master Builders Solutions Product Bulletins. Do not apply in ambient temperature greater than 100°F (38°C) or to surface temperature above 120°F (49°C).
- Multiple coats of base coat may be required to achieve a flat surface.
- Use of smooth/fine finish textures is not advised, however if desired to achieve design requirements, a large-scale mock-up is recommended.
- Requires the use of 9 fasteners per board.

## Warranty Statement

Master Builders Solutions warrants this product to be free from manufacturing defects and to meet the technical properties on the current Product Bulletin, if used as directed within shelf life. Satisfactory results depend not only on quality products but also upon many factors beyond our control. MASTER BUILDERS SOLUTIONS MAKES NO OTHER WARRANTY OR GUARANTEE, EXPRESS OR IMPLIED, INCLUDING WARRANTIES OF MERCHANTABILITY OR FITNESS FOR A PARTICULAR PURPOSE WITH RESPECT TO ITS PRODUCTS. The sole and exclusive remedy of Purchaser for any claim concerning this product, including but not limited to, claims alleging breach of warranty, negligence, strict liability or otherwise, is shipment to purchaser of product equal to the amount of product that fails to meet this warranty or refund of the original purchase price of product that fails to meet this warranty, at the sole option of Master Builders Solutions. In the absence of an extended warranty issued by Master Builders Solutions, any claims concerning this product must be received in writing within one (1) year from the date of shipment and any claims not presented within that period are waived by Purchaser. MASTER BUILDERS SOLUTIONS WILL NOT BE RESPONSIBLE FOR ANY SPECIAL, INCIDENTAL, CONSEQUENTIAL (INCLUDING LOST PROFITS) OR PUNITIVE DAMAGES OF ANY KIND. Purchaser must determine the suitability of the products for the intended use and assumes all risks and liabilities in connection therewith. This information and all further technical advice are based on Master Builders Solutions present knowledge and experience. However, Master Builders Solutions assumes no liability for providing such information and advice including the extent to which such information and advice may relate to existing third party intellectual property rights, especially patent rights, nor shall any legal relationship be created by or arise from the provision of such information and advice. Master Builders Solutions reserves the right to make any changes according to technological progress or further developments. The Purchaser of the Product(s) must test the product(s) for suitability for the intended application and purpose before proceeding with a full application of the product(s). Performance of the product described herein should be verified by testing and carried out by qualified experts.