

Pebbletex CI-DCA

Adhesively-applied, continuously insulated exterior wall cladding with a continuous air/water-resistive barrier

System Description

Pebbletex CI-DCA is a continuously insulated rainscreen wall cladding system. It features a Finestop fluid-applied air/water-resistive barrier, moisture drainage, up to R46 continuous exterior insulation, optional Hi-Impact mesh and a wide range of finish options.

Uses

Pebbletex CI-DCA may be used in fire-resistance-rated construction and in any construction type (IBC Types I through V), when installed in accordance with Master Builders Solutions Wall Systems' instructions.

Code Compliance

Document	Code Description
ICC-ESR 2186	2015 IBC, 2015 IRC
Miami Dade NOAs	Meets Miami Dade hurricane requirements
ICC-ESR 2986 (FINESTOP RA)	Air/water-resistive barrier*
Air Barrier Association of America recognized (FINESTOP RA/VB)	Can be used on projects where ABAA recognized air barriers are specified

*Finestop-RA/RS/VB can be used behind all claddings where more than one wall system is specified, creating one continuous AWRB system. This is appropriate whenever Finestone Pebbletex CI-DCA is used with other cladding types on a multi-clad building.

Material Substitution

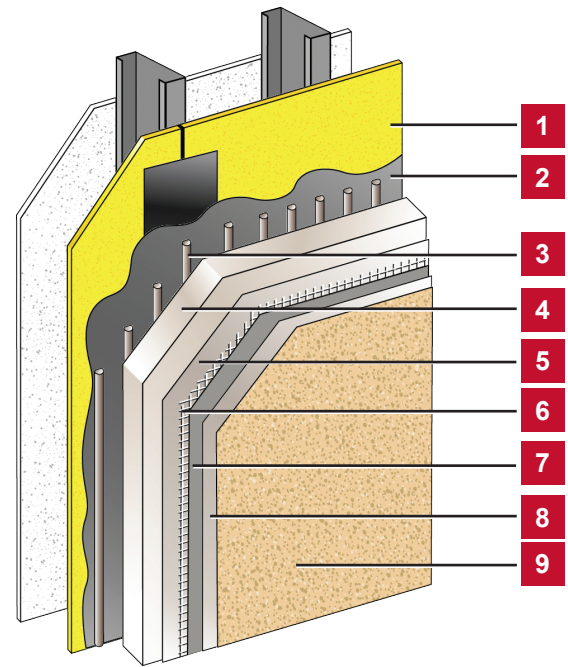
Material substitution will adversely affect system performance and will void all warranty coverage unless approved in writing by Master Builders Solutions Wall Systems.

Warranty

12-year Limited Labor, Material and Drainage Warranty. Coverage extends to framing and sheathing in addition to Pebbletex CI-DCA System itself.

Test Results

For testing, please see Pebbletex CI-DCA Test Results Technical Bulletin on our website at finestone.master-builders-solutions.com/en.



1. Acceptable substrates:
PermaBase® Cement Board and other cement boards conforming with ASTM C1325 (Type A - exterior); poured concrete/unit masonry; ASTM C1177 type sheathings, including Weather Defense™ Platinum sheathing, GreenGlass® sheathing, eXP™ sheathing, GlasRoc® sheathing, Securock™ glass-mat sheathing, and DensGlass® exterior sheathing; DensElement (sheathing only), gypsum sheathing (ASTM C79/C1396); Exposure I or exterior plywood (Grade C/D or better); or Exposure I OSB; Huber Zip (sheathing only).
2. Finestop RA/RS/VB
3. Finestone Adhesive
4. Approved EPS Insulation Board
5. Finestone Base Coat
6. Finestone Reinforcing Mesh
7. Finestone Base Coat
8. Tinted Primer (optional)
9. Finestone Finish Coat

Finestone Pebbletex CI-DCA

Limitations

- For use on above grade vertical walls. System must terminate a minimum of 8-inches (200 mm) above grade.
- Additives are not permitted for any Master Builders Solutions product unless approved in writing by Master Builders Solutions Wall Systems.
- All products must be installed at minimum 40°F (4°C) ambient and substrate temperatures unless otherwise noted on specific Master Builders Solutions Product Bulletins.
- Protect all work from precipitation for at least 24-hours after application.
- All products must be stored in accordance with specific instructions on relevant Master Builders Solutions Product Bulletins.
- All substrates must be clean, dry and sound without planar irregularities greater than 1/4-inch per 10-feet (6 mm per 3 m).

Warranty Statement

Master Builders Solutions warrants this product to be free from manufacturing defects and to meet the technical properties on the current Product Bulletin, if used as directed within shelf life. Satisfactory results depend not only on quality products but also upon many factors beyond our control. MASTER BUILDERS SOLUTIONS MAKES NO OTHER WARRANTY OR GUARANTEE, EXPRESS OR IMPLIED, INCLUDING WARRANTIES OF MERCHANTABILITY OR FITNESS FOR A PARTICULAR PURPOSE WITH RESPECT TO ITS PRODUCTS. The sole and exclusive remedy of Purchaser for any claim concerning this product, including but not limited to, claims alleging breach of warranty, negligence, strict liability or otherwise, is shipment to purchaser of product equal to the amount of product that fails to meet this warranty or refund of the original purchase price of product that fails to meet this warranty, at the sole option of Master Builders Solutions. In the absence of an extended warranty issued by Master Builders Solutions, any claims concerning this product must be received in writing within one (1) year from the date of shipment and any claims not presented within that period are waived by Purchaser. MASTER BUILDERS SOLUTIONS WILL NOT BE RESPONSIBLE FOR ANY SPECIAL, INCIDENTAL, CONSEQUENTIAL (INCLUDING LOST PROFITS) OR PUNITIVE DAMAGES OF ANY KIND.

Purchaser must determine the suitability of the products for the intended use and assumes all risks and liabilities in connection therewith. This information and all further technical advice are based on Master Builders Solutions present knowledge and experience. However, Master Builders Solutions assumes no liability for providing such information and advice including the extent to which such information and advice may relate to existing third party intellectual property rights, especially patent rights, nor shall any legal relationship be created by or arise from the provision of such information and advice. Master Builders Solutions reserves the right to make any changes according to technological progress or further developments. The Purchaser of the Product(s) must test the product(s) for suitability for the intended application and purpose before proceeding with a full application of the product(s). Performance of the product described herein should be verified by testing and carried out by qualified experts.