

Finescreen 1000 CI

Highly impact water-drainage wall system incorporating PermaBASE CI™ polyiso insulated cement board, reinforced base coat and 100% acrylic polymer exterior finish.

System Description

Finestone Finescreen 1000 CI is a high-impact, water-drainage wall cladding system that incorporates a Finestone air/water-resistive barrier, drainage mat and features PermaBASE CI™ Insulated Cement Board by PermaBASE® Building Products, LLC installed with a polymer-modified base coat, fiberglass reinforcing mesh, and finishes. Finescreen 1000 CI system provides ease of design to ensure energy code compliance, high impact and increased dimensional stability without sacrificing design freedom.

PermaBASE CI™ Insulated Cement Board is a composite cement board combining the strength and benefits of PermaBASE® Cement Board with rigid insulation to create an ideal substrate for exterior finishes that meet or exceed most continuous insulation requirements. Manufactured in a convenient 1" (R-4), 2" (R-10) and 3" (R-16) overall thickness, PermaBASE CI utilizes common trims and accessories.

Design Considerations

Maximum substrate design deflection is L/360. Substrate must be level within ¼" in 10' (6 mm in 3 m).

Acceptable Sheathing: PermaBase® Cement Board and other cement boards conforming with ASTM C1325 (Type A – exterior); poured concrete/unit masonry; ASTM C1177 type sheathings, including Weather Defense™ Platinum sheathing, GreenGlass® sheathing, eXPTM sheathing, GlasRoc® sheathing, Securock™ glass-mat sheathing, and DensGlass® exterior sheathing; DensElement (sheathing only), gypsum sheathing (ASTM C79/C1396); Exposure I or exterior plywood (Grade C/D or better); or Exposure I OSB; Huber Zip (sheathing only).

Expansion joints are required in the system where they exist in the substrate, where the system adjoins dissimilar construction, at changes in substrates, at floor lines in multilevel wood frame construction, and where movement is anticipated.

Reference system specification for testing information.

Uses

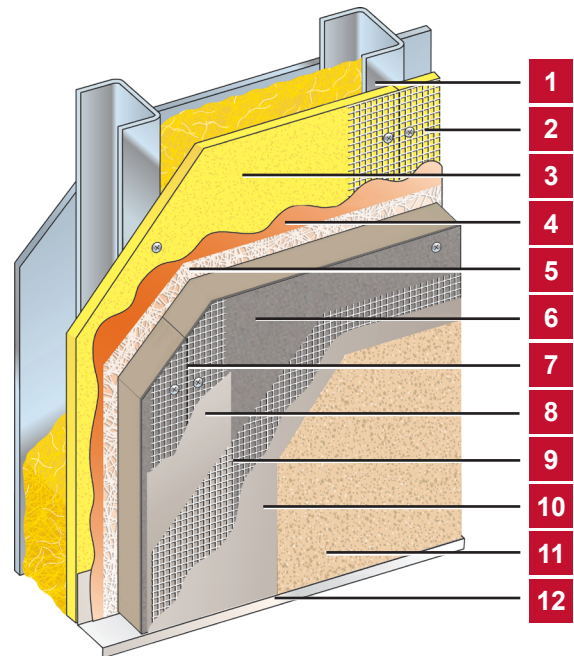
Exterior walls in new or retrofit commercial, institutional and residential construction such as hotels, hospitals, retail, schools, multi-family apartments and condominiums, and government facilities.

Material Substitution

Material substitution will adversely affect system performance and will void all warranty coverage unless approved in writing by Master Builders Solutions Wall Systems.

Warranty

Refer to the Finestone Warranty Schedule for specific information about this product/system.



1. Framing*
2. Approved Joint Reinforcement
3. Acceptable Sheathing*
4. Finestone Air/Water-Resistive Barrier
5. Drainage Mat by Master Builders Solutions
6. PermaBASE CI™ Insulated Cement Board*
7. Self Adhering Mesh Tape by Master Builders Solutions
8. Finestone Base Coat
9. Finestone Reinforcing Mesh
10. Finestone Base Coat
11. Finestone Finish
12. Flashing or Starter Track*
(*By Others)

Finestone Finescreen 1000 CI

Code Compliance

DOCUMENT	DESCRIPTION
UL ER22158-02	Complies with 2018 and 2015 IBC and IRC
ASTM E119	Does not detract from fire rating of base wall
NFPA 285 and 268	Acceptable on non-combustible construction
ICC-ESR 2986	Air/water-resistive barrier*
Air Barrier Association of America recognized	Can be used on projects where ABAA recognized air barriers are specified

*Air/Water-resistive barriers can be used behind all claddings where more than one wall system is specified, creating one continuous AWRB system. This is appropriate whenever air/water resistive barrier is used with other cladding types on a multi-clad building.

PermaBASE CI Physical Properties per PermaBASE Building Products, LLC:

TEST	METHOD	1 INCH	2 INCH	3 INCH
Dimensional Stability	ASTM D2126	<0.5%	<0.5%	<0.5%
Water Absorption	ASTM D209	<5.0%	<5.0%	<5.0%
Water Vapor Transmission	ASTM E96	<1.5 perms	<1.5 perms	<1.5 perms
Flame Spread	ASTM E84	<25	<25	<25
Smoke Development	ASTM E84	<450	<450	<450
R-Value	ASTM C518	4	10	16
Dimensions	ASTM C473	1" x 4' x 8'	2" x 4' x 8'	3" x 4' x 8'
Weight		2.2 lbs. / sq. ft	2.4 lbs. / sq. ft	2.6 lbs. / sq. ft

Finestone Finescreen 1000 CI

Limitations

- For above grade vertical wall use only
- Additives are not permitted for any Master Builders Solutions product unless approved in writing by Master Builders Solutions Wall Systems.
- All products must be installed at minimum 40 °F (4 °C) ambient and substrate temperatures unless otherwise noted on specific Master Builders Solutions Product Bulletins.
- Protect all work from precipitation for at least 24-hours after application.
- All products must be stored in accordance with specific instructions on relevant Master Builders Solutions Product Bulletins.
- All substrates must be clean, dry and sound without planar irregularities greater than 1/4-inch per 10-feet (6 mm per 3 m).

Limited Warranty Notice

Master Builders Solutions Construction Systems US, LLC ("Master Builders") warrants this product to be free from manufacturing defects and to meet the technical properties on the current Technical Data Guide, if used as directed within shelf life. Satisfactory results depend not only on quality products but also upon many factors beyond our control. Master Builders MAKES NO OTHER WARRANTY OR GUARANTEE, EXPRESS OR IMPLIED, INCLUDING WARRANTIES OF MERCHANTABILITY OR FITNESS FOR A PARTICULAR PURPOSE WITH RESPECT TO ITS PRODUCTS. The sole and exclusive remedy of Purchaser for any claim concerning this product, including but not limited to, claims alleging breach of warranty, negligence, strict liability or otherwise, is shipment to purchaser of product equal to the amount of product that fails to meet this warranty or refund of the original purchase price of product that fails to meet this warranty, at the sole option of Master Builders. Any claims concerning this product must be received in writing within one (1) year from the date of shipment and any claims not presented within that period are waived by Purchaser. Master Builders WILL NOT BE RESPONSIBLE FOR ANY SPECIAL, INCIDENTAL, CONSEQUENTIAL (INCLUDING LOST PROFITS) OR PUNITIVE DAMAGES OF ANY KIND.

Purchaser must determine the suitability of the products for the intended use and assumes all risks and liabilities in connection therewith. This information and all further technical advice are based on Master Builders' present knowledge and experience. However, Master Builders assumes no liability for providing such information and advice including the extent to which such information and advice may relate to existing third party intellectual property rights, especially patent rights, nor shall any legal relationship be created by or arise from the provision of such information and advice. Master Builders reserves the right to make any changes according to technological progress or further developments. The Purchaser of the Product(s) must test the product(s) for suitability for the intended application and purpose before proceeding with a full application of the product(s). Performance of the product described herein should be verified by testing and carried out by qualified experts.

FOR PROFESSIONAL USE ONLY. NOT FOR SALE TO OR USE BY THE GENERAL PUBLIC.