

# Finestone Stucco Ultra Wall System

A premium cement plaster stucco system with enhanced water management featuring Finestop RA/RS/VB air/water-resistive barrier.

## System Description

Finestone Stucco Ultra is an enhanced water management stucco system that offers design flexibility and aesthetic appeal. It utilizes Finestone liquid applied air/water-resistive barriers and Master Builders Solutions Drainage Mat DF to provide a premium level of protection of the sheathing and cavity against moisture and air intrusion. Optional Finestone base coat and reinforcing mesh and/or elastomeric finish are available for superior crack suppression.

## Uses

New or retrofit residential, institutional and commercial construction such as hotels, hospitals, retail centers, schools, multi-family apartments and condominiums, and government facilities. May be used in fire-resistance-rated construction and in any construction type, including IBC Types I through V, when installed in accordance with Master Builders Solutions Wall Systems' instructions. For use on above grade vertical walls.

## Acceptable Substrates

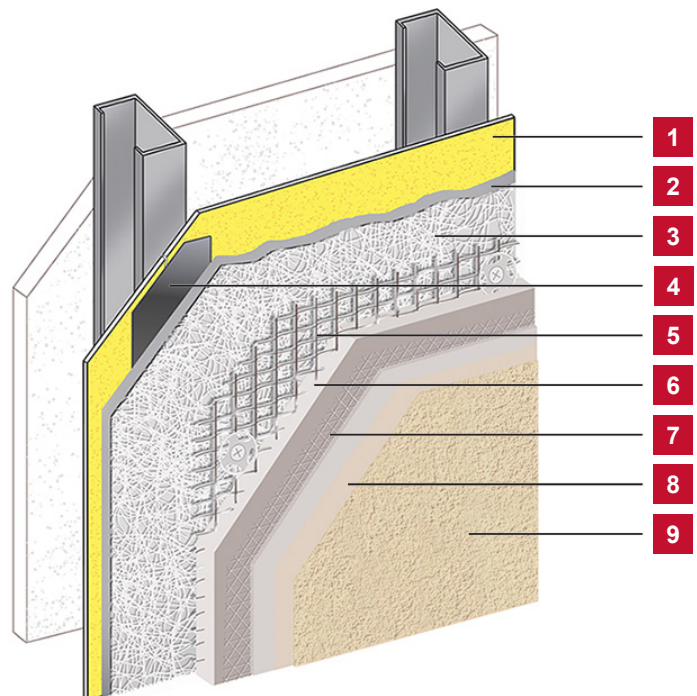
Poured concrete/unit masonry; ASTM C1177 type sheathings, including DensGlass™ exterior sheathing, DensElement (sheathing only), eXP™ sheathing, GlasRoc® sheathing, Securock™ glass-mat sheathing, Weather Defense™ Platinum sheathing, GreenGlass® sheathing; cement-boards (ASTM C1325 Type A Exterior) including PermaBase™ cement-board; untreated Exposure I or exterior plywood sheathing (grade C-D or better); untreated Exposure I OSB, Huber Zip (sheathing only); Fire Treated wood sheathing: Pyro-Guard® and Dricon® plywood and FlameBlock® OSB; gypsum sheathing (ASTM C79/ASTM C1396).

## Enhanced Crack Resistance Options

Good: Maxlastic Elastomeric Finish

Better: SRT Mesh with Finestone base coat or Stucco Level Coat

Best: SRT Mesh with Finestone base coat or Stucco Level Coat and Maxlastic Elastomeric Finish



1. Acceptable Substrate\*
2. Finestop RA/RS/VB
3. Drainage Mat DF by Master Builders Solution
4. Approved Joint Reinforcement:  
MaxFlash, Sheathing Fabric embedded in  
Finestop RA/RS/VB or MasterSeal AWB 970 NP
5. PermaLath 1000 or Metal Plaster Base\*
6. StuccoBase by Master Builders Solutions
7. Finestone Reinforcing Mesh Embedded in Finestone  
Base Coat (Optional)
8. Stucco Primer by Master Builders Solution (Optional)
9. Finestone Finish

\*(By Others)

# Finestone Stucco Ultra Wall System

## Advantages

- Provides a drainage plane for directing incidental moisture out of the wall assembly.
- Fluid applied air/water-resistive barrier provides a durable, seamless secondary moisture protection.
- Three-dimensional Drainage Mat by Master Builders Solutions provides a drainage plane for maximum drainage and drying performance.
- Seamless wall surface provides high resistance to potential water intrusion from rain and other environmental sources.
- PermaLath 1000 self-furred glass fiber reinforcing lath that will not rust.
- Factory prepared StuccoBase minimizes potential site mixing errors; improves quality control.
- Finestone acrylic modified base coat over StuccoBase enhances water resistance performance and finish coat aesthetics.
- Elastomeric finish coat bridges hairline cracks.
- Reinforcing mesh option further increases crack resistance.
- Resistant to impact and punctures; good for high traffic areas.
- Provides design flexibility with numerous design options.
- Wide selection of finish textures, standard colors and unlimited custom color provides design flexibility with numerous design options.

## Material Substitution

Material substitution will adversely affect system performance and will void all warranty coverage unless approved in writing by Master Builders Solutions Wall Systems.

## System and Component Performance

Test	Method	Criteria	Results
Freeze-thaw Resistance	Per ICC-ES acceptance criteria AC-11	No sign of deleterious effects after 10 cycles.	StuccoBase passed with no visible evidence of deterioration when examined under 5x magnification.
Water Vapor Transmission	ASTM E96-Wet Cup	Report Value	StuccoBase 20.4 perms
Racking Load Test	ASTM E72	Report Value	Maximum load resistance 530 pounds (250 kg)
Compressive Strength	ASTM C109	Report Value	22.4 MPa (3245 psi) average for StuccoBase
Flexural Strength	ASTM C348	Report Value	4.57 MPa (663 psi) average for StuccoBase
Surface Burning	ASTM E84	Report Value	<25 Flame Spread <450 Smoke Developed Includes PermaLath 1000, StuccoBase, and Finestone Finishes
Non-Combustibility	ASTM E136	No flaming, excess temperature rise or weight loss when exposed to 750 °C (1382 °F).	Pass StuccoBase with PermaLath 1000 or metal plaster base
Fire Resistance Rated Assemblies	ASTM E119	No transmission of heat greater than 250 °F above ambient; no passage of flame or hot gasses; no passage of water from hose stream test; for load bearing walls – ability to withstand load under test conditions.	1 Hour Rated Assemblies <sup>1</sup> : <ul style="list-style-type: none"> <li>• Load bearing wood stud wall with 10.9 mm (7/16") OSB and 9.5 mm (3/8") StuccoBase</li> <li>• Load bearing wood stud wall with 16 mm (5/8") Type X gypsum sheathing and 9.5 mm (3/8") StuccoBase</li> <li>• Load bearing wood stud wall with 10.9 mm (7/16") OSB, PermaLath 1000 &amp; 12.7 mm (1/2") StuccoBase (from inside only)</li> <li>• Non-load bearing steel framed wall with 16 mm (5/8") Type X gypsum sheathing, PermaLath 1000 &amp; 12.7 mm (1/2") StuccoBase</li> </ul>

Reference Intertek Evaluation Reports CCRR-0230 and CCRR-0249.  
For additional testing reference Finestone Stucco Ultra Specification.