



# EIFS Resurfacing Systems

## Typical Details



A brand of  
**MASTER**®  
**» BUILDERS**  
SOLUTIONS

# Finestone EIFS Resurfacing System

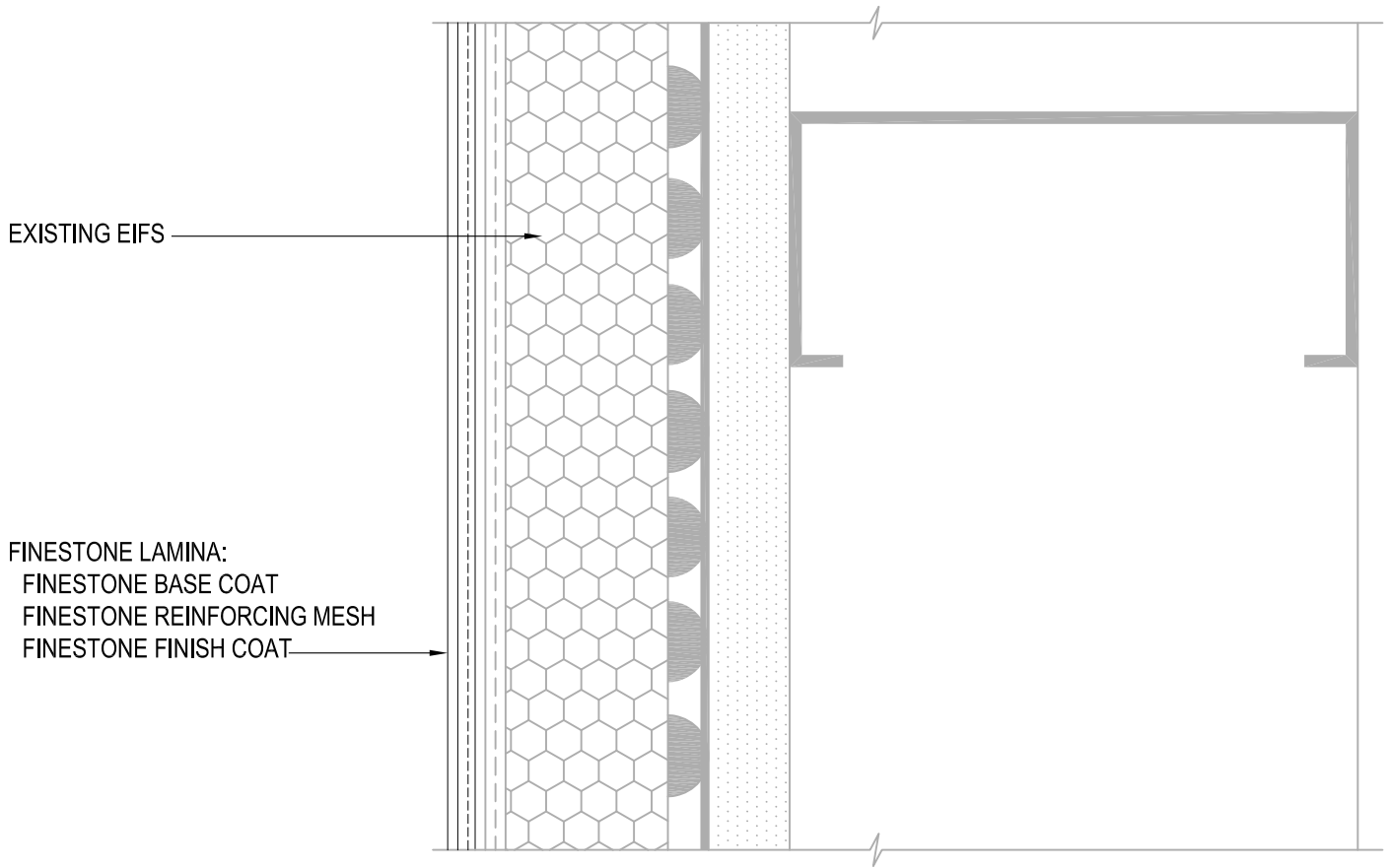
## Typical Details

### Table of Contents

1	Typical Lamina Application	13	Typical Expansion Joint at Change in Substrate
2	Typical Aesthetic Groove	14	Typical Transition at Soffit and Fascia
3	Typical Window Head (Flush)	15	Typical Vertical Expansion Joint
4	Typical Window Head (Recessed)	16	Typical Pipe Penetration
5	Typical Window Jamb (Flush)	17	Typical Corner Mesh Application
6	Typical Window Jamb (Recessed)	18	Typical Light Fixture
7	Typical Window Sill (Flush)	19	Typical Termination at Foundation
8	Typical Window Sill (Recessed)	20	Typical Termination at Foundation (Flush)
9	Typical Roof Edge Flashing		
10	Typical Metal Coping		
11	Typical Parapet Cap		
12	Typical Expansion Joint at Floor Line		

#### Notes:

- Unsatisfactory conditions shall be reported to the General Contractor and corrected before the application of Master Builders Solutions- Wall Systems products.
- Install Master Builders Solutions materials in accordance with current installation instructions.
- The details within represent Master Builders Solutions- Wall Systems latest recommendations. They are presented in good faith by Master Builders Solutions- Wall Systems . The details are subject to change without notice. Master Builders Solutions- Wall Systems accepts no liability for the end use of the details. For conditions not shown, Master Builders Solutions- Wall Systems for review of specific detail.



REFERENCE reFINE EIFS PROCEDURES AND RESURFACING SPECIFICATION FOR FURTHER INFORMATION

## TYPICAL LAMINA APPLICATION

### FINESTONE EIFS RESURFACING SYSTEM

SCALE: NTS

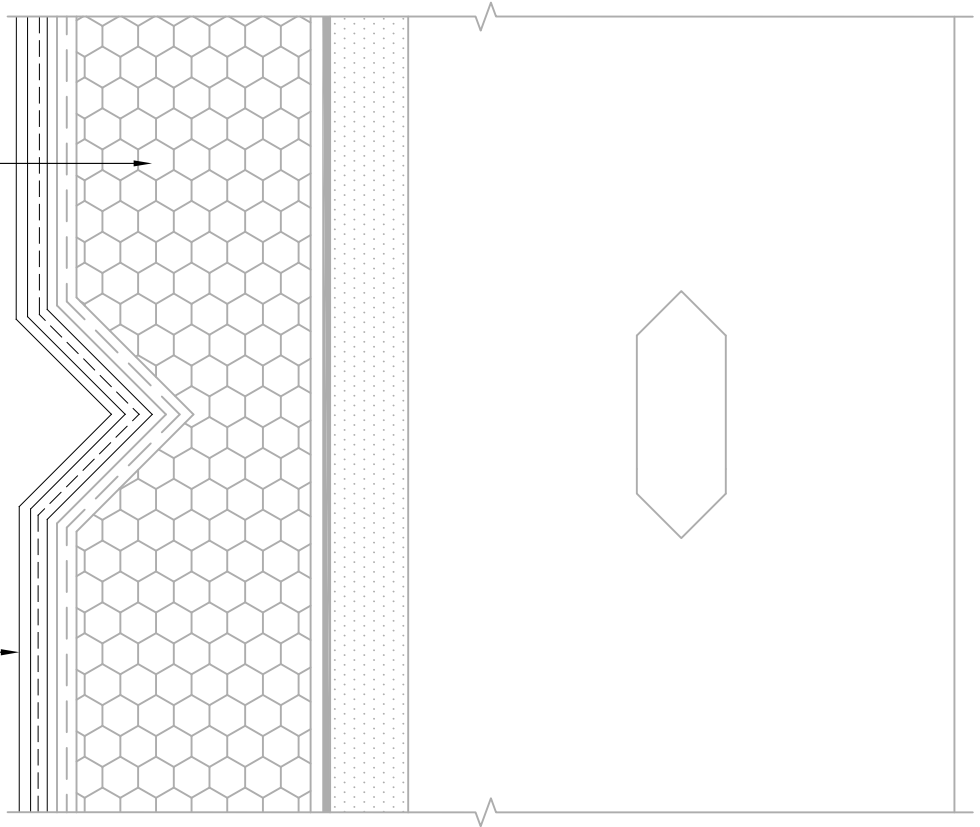
01

Structure, substrates, flashing, and other items which are not part of the BASF FINESTONE *EIFS Resurfacing System* are the responsibility of others. This detail is subject to change without notice. BASF Corporation - Wall Systems (herein after BASF Wall Systems) accepts no liability for the end use of this detail. For conditions not shown, consult BASF Wall Systems for review of specific detail.

**BASF**  
 We create chemistry

EXISTING EIFS

FINESTONE LAMINA:  
FINESTONE BASE COAT  
FINESTONE REINFORCING MESH  
FINESTONE FINISH COAT



REFERENCE reFINE EIFS PROCEDURES AND RESURFACING SPECIFICATION FOR FURTHER INFORMATION

## TYPICAL AESTHETIC GROOVE FINESTONE EIFS RESURFACING SYSTEM

SCALE: NTS

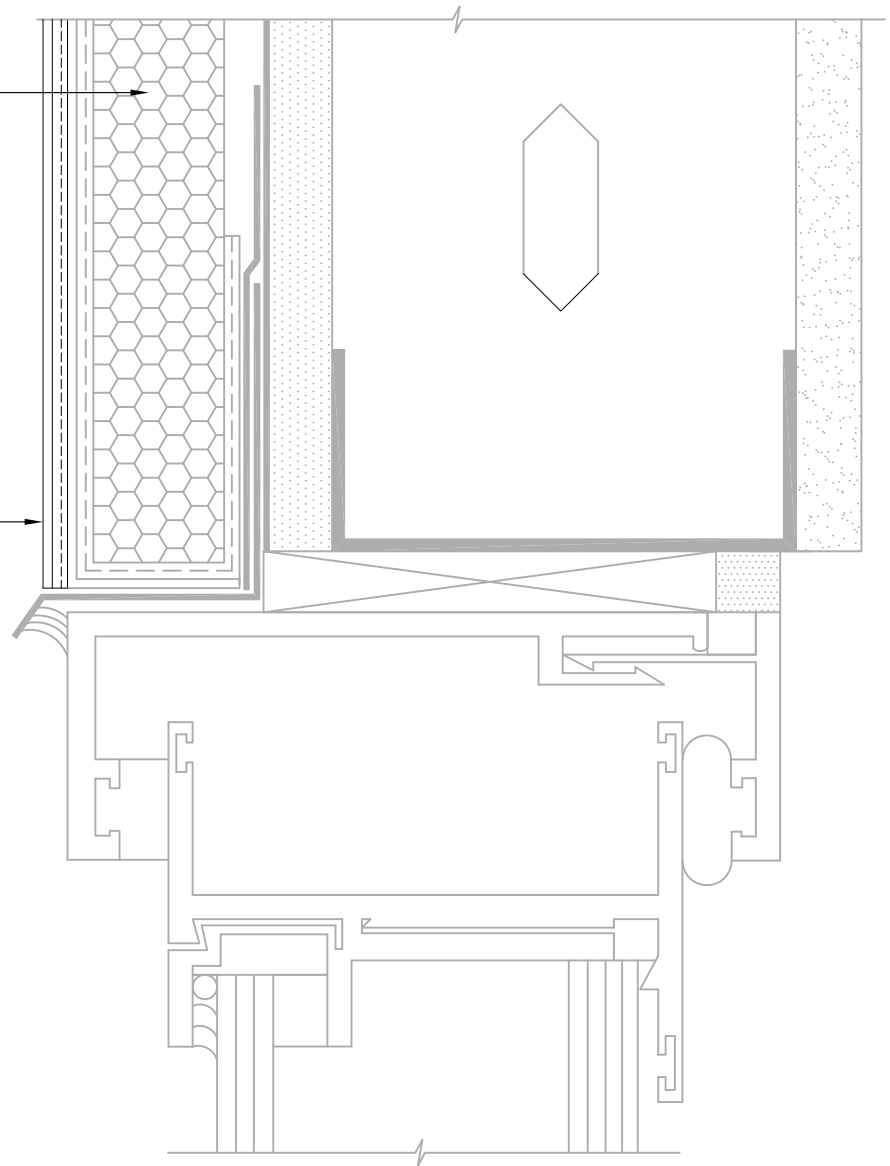
02

Structure, substrates, flashing, and other items which are not part of the BASF FINESTONE *EIFS Resurfacing System* are the responsibility of others. This detail is subject to change without notice. BASF Corporation - Wall Systems (herein after BASF Wall Systems) accepts no liability for the end use of this detail. For conditions not shown, consult BASF Wall Systems for review of specific detail.

  
We create chemistry

EXISTING EIFS

FINESTONE LAMINA:  
FINESTONE BASE COAT  
FINESTONE REINFORCING MESH  
FINESTONE FINISH COAT



REFERENCE reFINE EIFS PROCEDURES AND RESURFACING SPECIFICATION FOR FURTHER INFORMATION

## TYPICAL WINDOW HEAD (FLUSH)

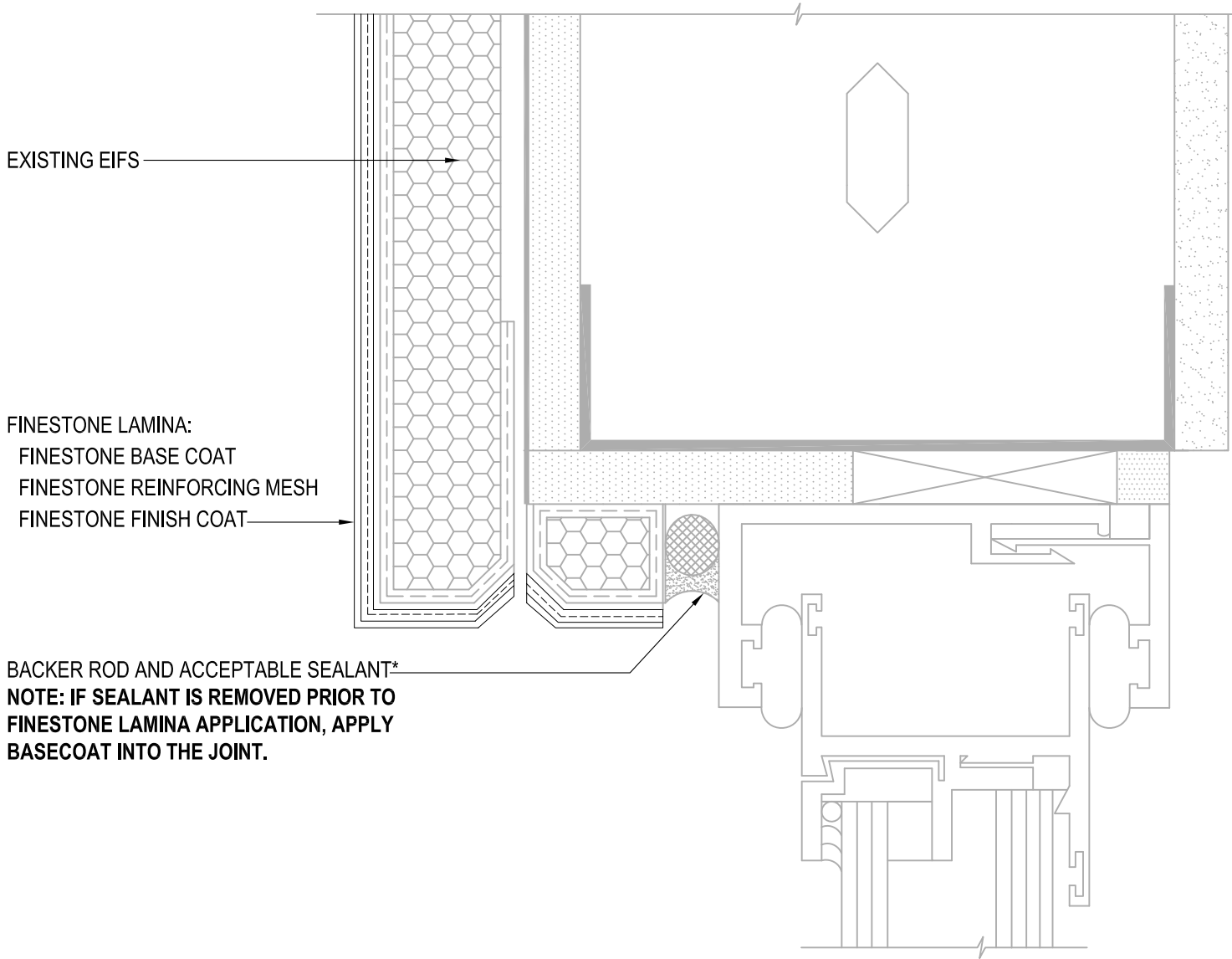
### FINESTONE EIFS RESURFACING SYSTEM

SCALE: NTS

03

Structure, substrates, flashing, and other items which are not part of the BASF FINESTONE *EIFS Resurfacing System* are the responsibility of others. This detail is subject to change without notice. BASF Corporation - Wall Systems (herein after BASF Wall Systems) accepts no liability for the end use of this detail. For conditions not shown, consult BASF Wall Systems for review of specific detail.

**BASF**  
We create chemistry



\*BY OTHERS

REFERENCE reFINE EIFS PROCEDURES AND RESURFACING SPECIFICATION FOR FURTHER INFORMATION

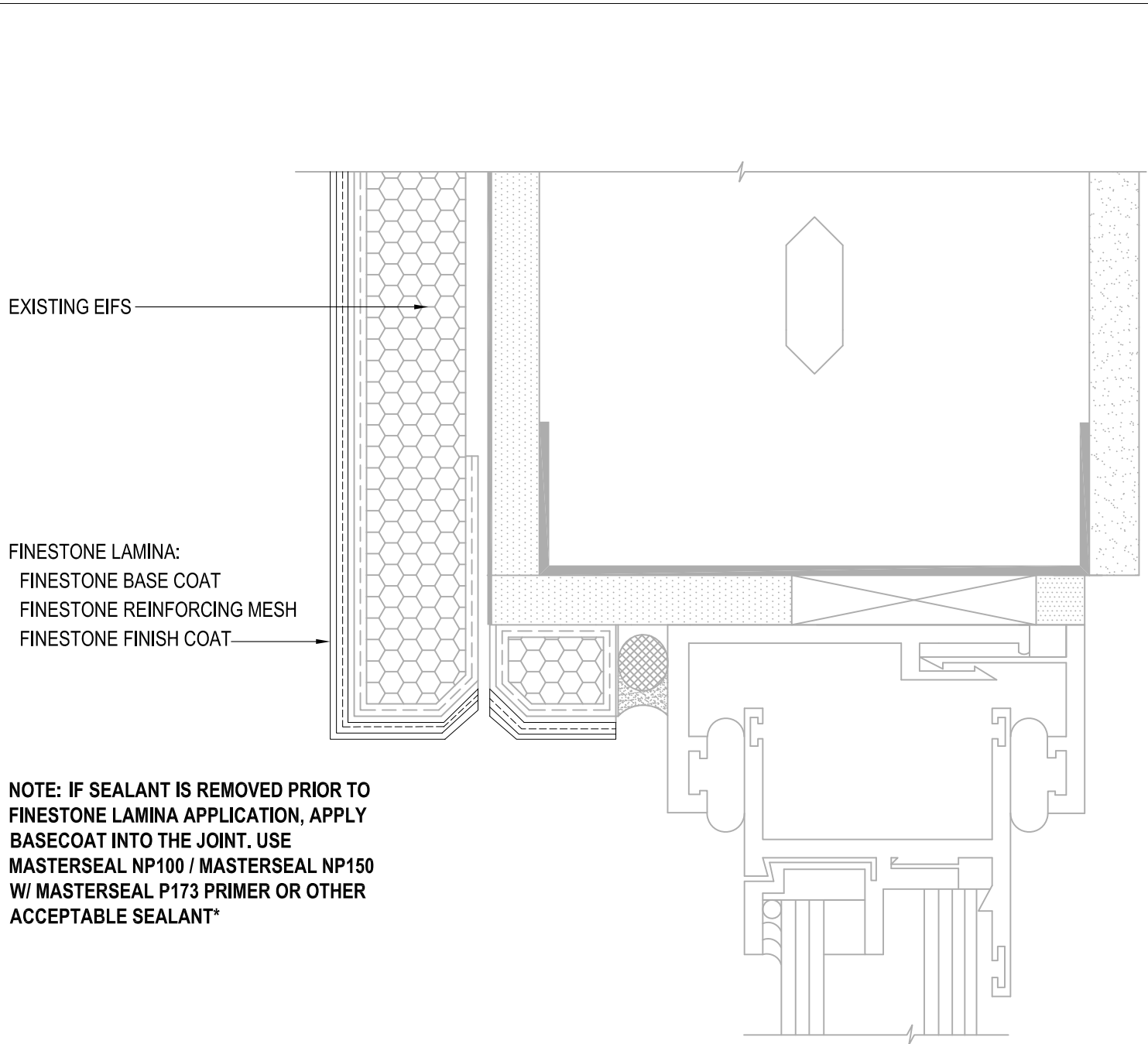
## TYPICAL WINDOW HEAD (RECESSED) FINESTONE EIFS RESURFACING SYSTEM

SCALE: NTS

04

Structure, substrates, flashing, and other items which are not part of the BASF FINESTONE *EIFS Resurfacing System* are the responsibility of others. This detail is subject to change without notice. BASF Corporation - Wall Systems (herein after BASF Wall Systems) accepts no liability for the end use of this detail. For conditions not shown, consult BASF Wall Systems for review of specific detail.






\*BY OTHERS

REFERENCE reFINE EIFS PROCEDURES AND RESURFACING SPECIFICATION FOR FURTHER INFORMATION

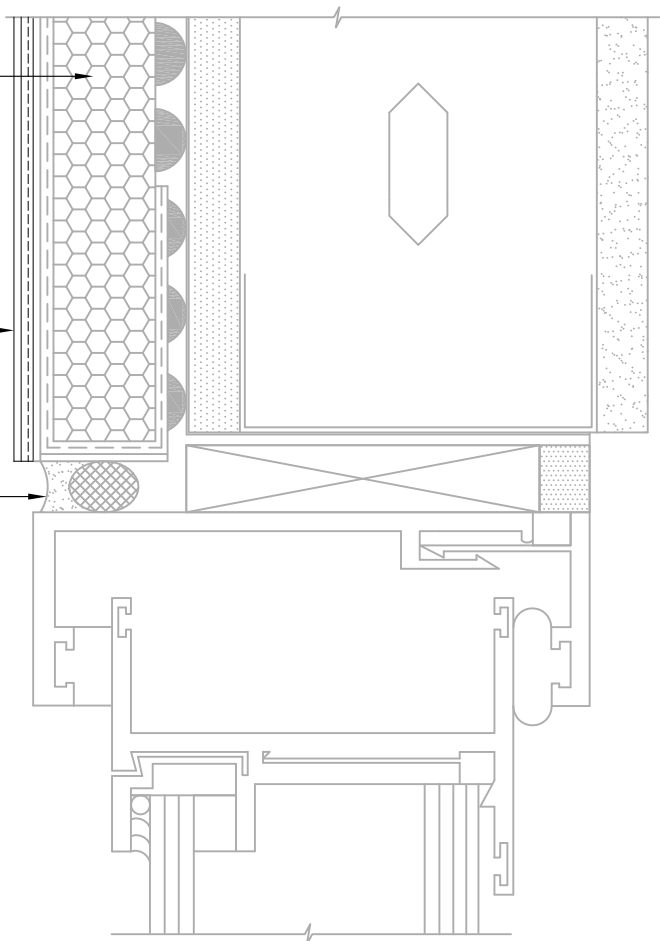
**TYPICAL WINDOW HEAD (RECESSED)  
 FINESTONE EIFS RESURFACING SYSTEM**

SCALE: NTS	Structure, substrates, flashing, and other items which are not part of the BASF FINESTONE <i>EIFS Resurfacing System</i> are the responsibility of others. This detail is subject to change without notice. BASF Corporation - Wall Systems (herein after BASF Wall Systems) accepts no liability for the end use of this detail. For conditions not shown, consult BASF Wall Systems for review of specific detail.	 <b>We create chemistry</b>
04		

EXISTING EIFS

FINESTONE LAMINA:  
FINESTONE BASE COAT  
FINESTONE REINFORCING MESH  
FINESTONE FINISH COAT

BACKER ROD AND ACCEPTABLE SEALANT\*  
NOTE: IF SEALANT IS REMOVED PRIOR TO  
FINESTONE LAMINA APPLICATION, APPLY  
BASECOAT INTO THE JOINT.



\*BY OTHERS

REFERENCE reFINE EIFS PROCEDURES AND RESURFACING SPECIFICATION FOR FURTHER INFORMATION

## TYPICAL WINDOW JAMB (FLUSH) FINESTONE EIFS RESURFACING SYSTEM

SCALE: NTS

05

Structure, substrates, flashing, and other items which are not part of the BASF FINESTONE *EIFS Resurfacing System* are the responsibility of others. This detail is subject to change without notice. BASF Corporation - Wall Systems (herein after BASF Wall Systems) accepts no liability for the end use of this detail. For conditions not shown, consult BASF Wall Systems for review of specific detail.

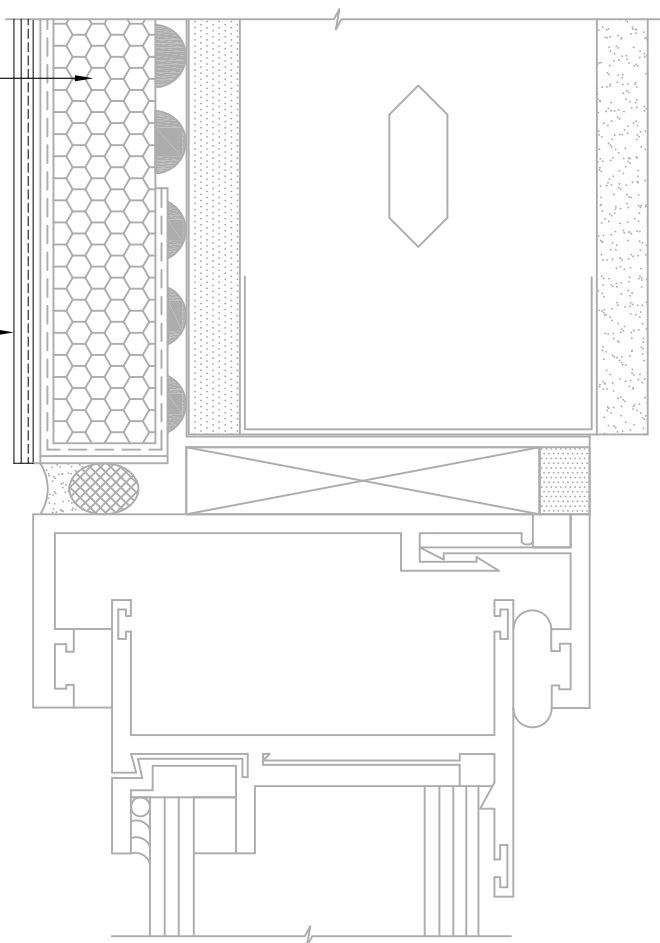
**BASF**  
We create chemistry



EXISTING EIFS

FINESTONE LAMINA:  
FINESTONE BASE COAT  
FINESTONE REINFORCING MESH  
FINESTONE FINISH COAT

NOTE: IF SEALANT IS REMOVED PRIOR TO  
FINESTONE LAMINA APPLICATION, APPLY  
BASECOAT INTO THE JOINT. USE  
MASTERSEAL NP100 / MASTERSEAL NP150  
W/ MASTERSEAL P173 PRIMER OR OTHER  
ACCEPTABLE SEALANT\*



\*BY OTHERS

REFERENCE reFINE EIFS PROCEDURES AND RESURFACING SPECIFICATION FOR FURTHER INFORMATION

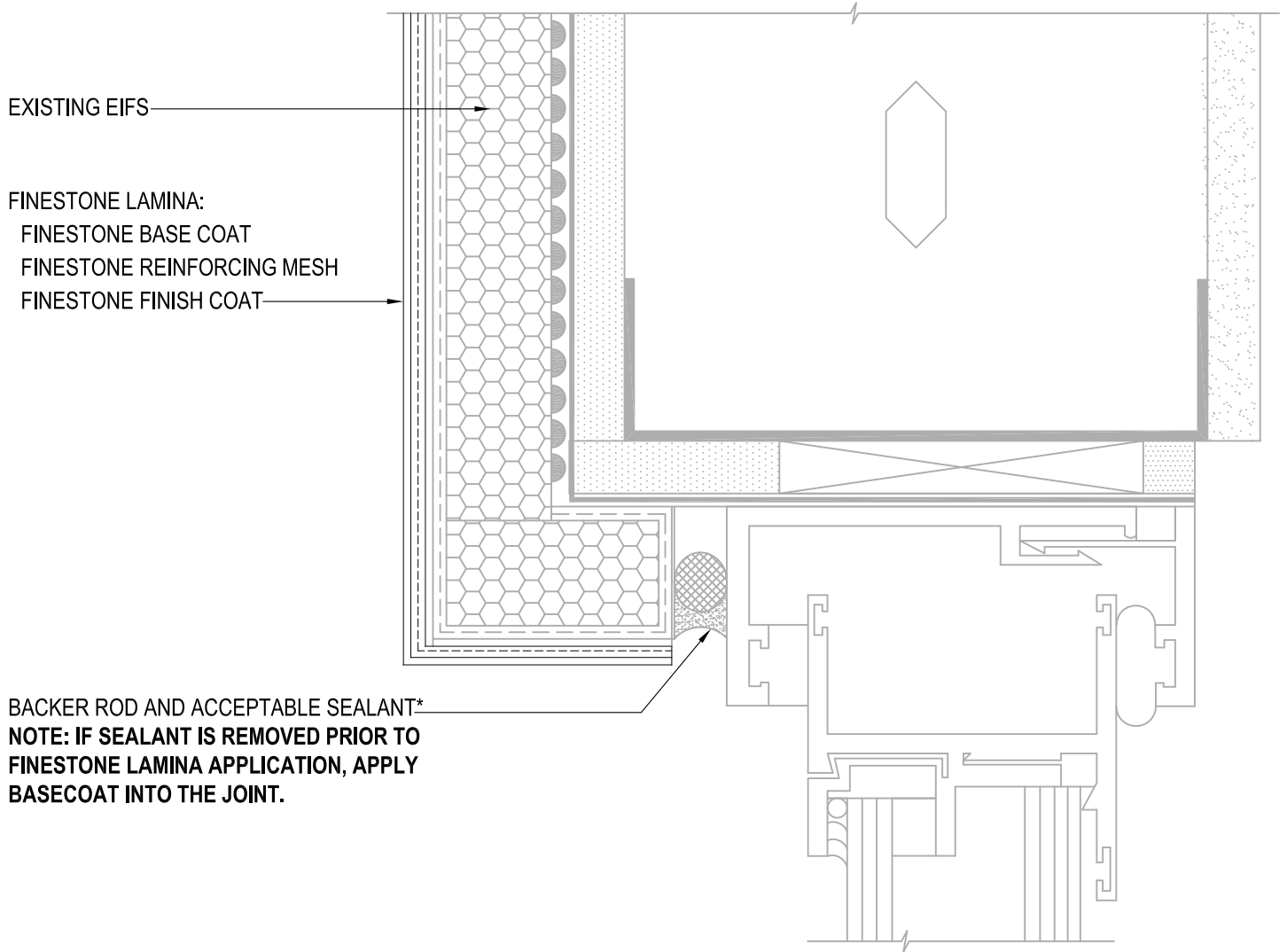
## TYPICAL WINDOW JAMB (FLUSH) FINESTONE EIFS RESURFACING SYSTEM

SCALE: NTS

05

Structure, substrates, flashing, and other items which are not part of the BASF FINESTONE *EIFS Resurfacing System* are the responsibility of others. This detail is subject to change without notice. BASF Corporation - Wall Systems (herein after BASF Wall Systems) accepts no liability for the end use of this detail. For conditions not shown, consult BASF Wall Systems for review of specific detail.

**BASF**  
We create chemistry



\*BY OTHERS

REFERENCE reFINE EIFS PROCEDURES AND RESURFACING SPECIFICATION FOR FURTHER INFORMATION

## TYPICAL WINDOW JAMB (RECESSED) FINESTONE EIFS RESURFACING SYSTEM

SCALE: NTS

06

Structure, substrates, flashing, and other items which are not part of the BASF FINESTONE *EIFS Resurfacing System* are the responsibility of others. This detail is subject to change without notice. BASF Corporation - Wall Systems (herein after BASF Wall Systems) accepts no liability for the end use of this detail. For conditions not shown, consult BASF Wall Systems for review of specific detail.

**BASF**  
 We create chemistry

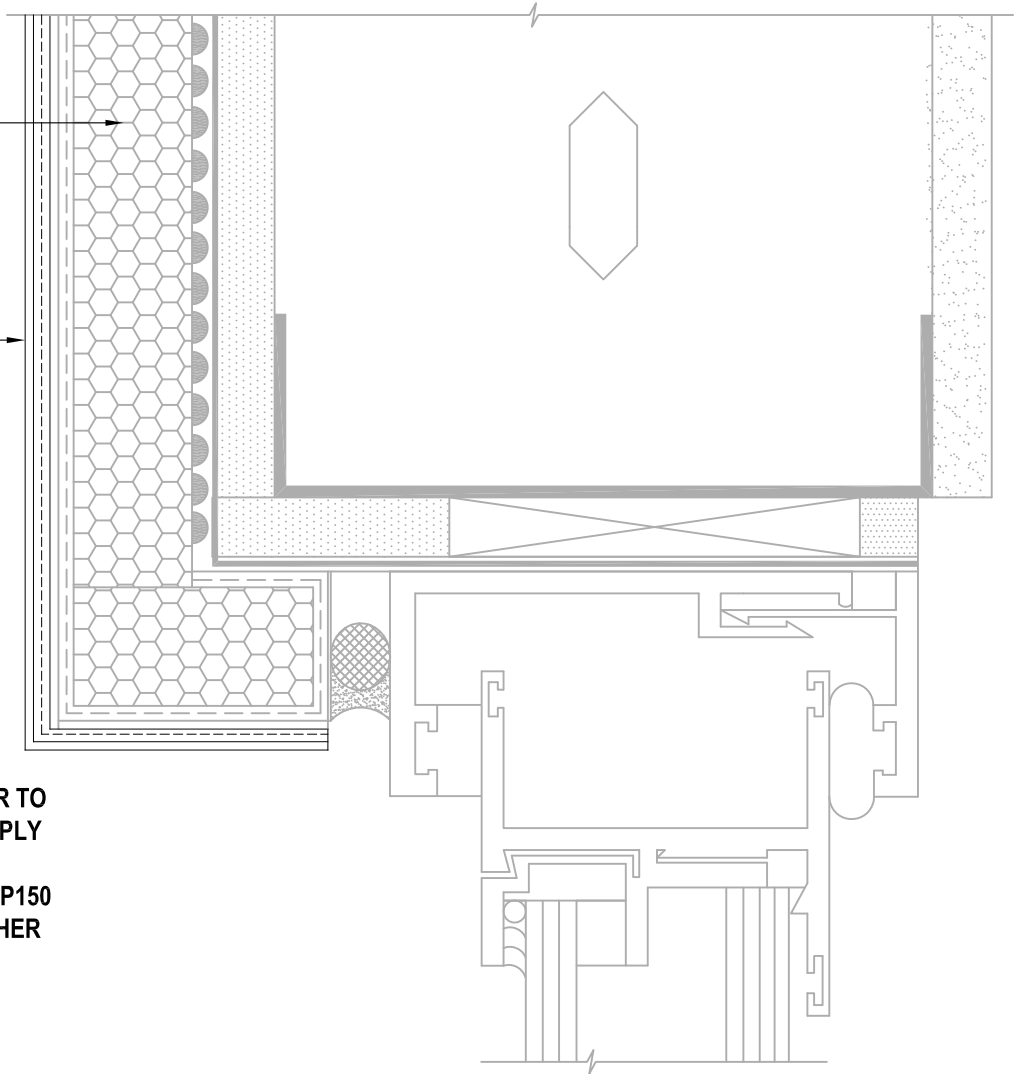
EXISTING EIFS

FINESTONE LAMINA:

FINESTONE BASE COAT

FINESTONE REINFORCING MESH

FINESTONE FINISH COAT



NOTE: IF SEALANT IS REMOVED PRIOR TO  
FINESTONE LAMINA APPLICATION, APPLY  
BASECOAT INTO THE JOINT. USE  
MASTERSEAL NP100 / MASTERSEAL NP150  
W/ MASTERSEAL P173 PRIMER OR OTHER  
ACCEPTABLE SEALANT\*

\*BY OTHERS

REFERENCE reFINE EIFS PROCEDURES AND RESURFACING SPECIFICATION FOR FURTHER INFORMATION

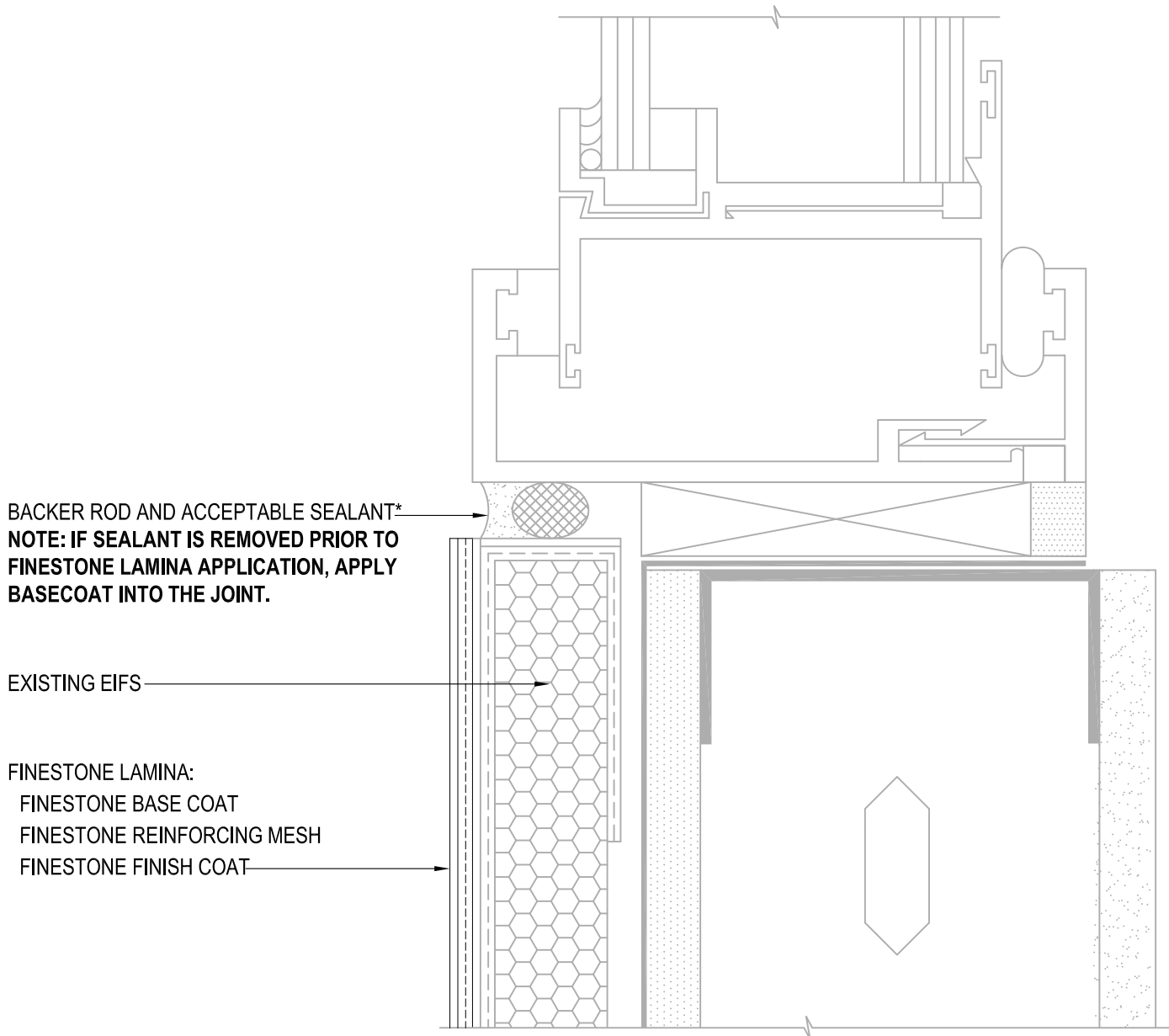
## TYPICAL WINDOW JAMB (RECESSED) FINESTONE EIFS RESURFACING SYSTEM

SCALE: NTS

06

Structure, substrates, flashing, and other items which are not part of the BASF FINESTONE *EIFS Resurfacing System* are the responsibility of others. This detail is subject to change without notice. BASF Corporation - Wall Systems (herein after BASF Wall Systems) accepts no liability for the end use of this detail. For conditions not shown, consult BASF Wall Systems for review of specific detail.

**BASF**  
We create chemistry



\*BY OTHERS

REFERENCE reFINE EIFS PROCEDURES AND RESURFACING SPECIFICATION FOR FURTHER INFORMATION

## TYPICAL WINDOW SILL (FLUSH) FINESTONE EIFS RESURFACING SYSTEM

SCALE: NTS

07

Structure, substrates, flashing, and other items which are not part of the BASF FINESTONE *EIFS Resurfacing System* are the responsibility of others. This detail is subject to change without notice. BASF Corporation - Wall Systems (herein after BASF Wall Systems) accepts no liability for the end use of this detail. For conditions not shown, consult BASF Wall Systems for review of specific detail.

■ BASF

We create chemistry

**NOTE: IF SEALANT IS REMOVED PRIOR TO  
FINESTONE LAMINA APPLICATION, APPLY  
BASECOAT INTO THE JOINT. USE  
MASTERSEAL NP100 / MASTERSEAL NP150  
W/ MASTERSEAL P173 PRIMER OR OTHER  
ACCEPTABLE SEALANT\***

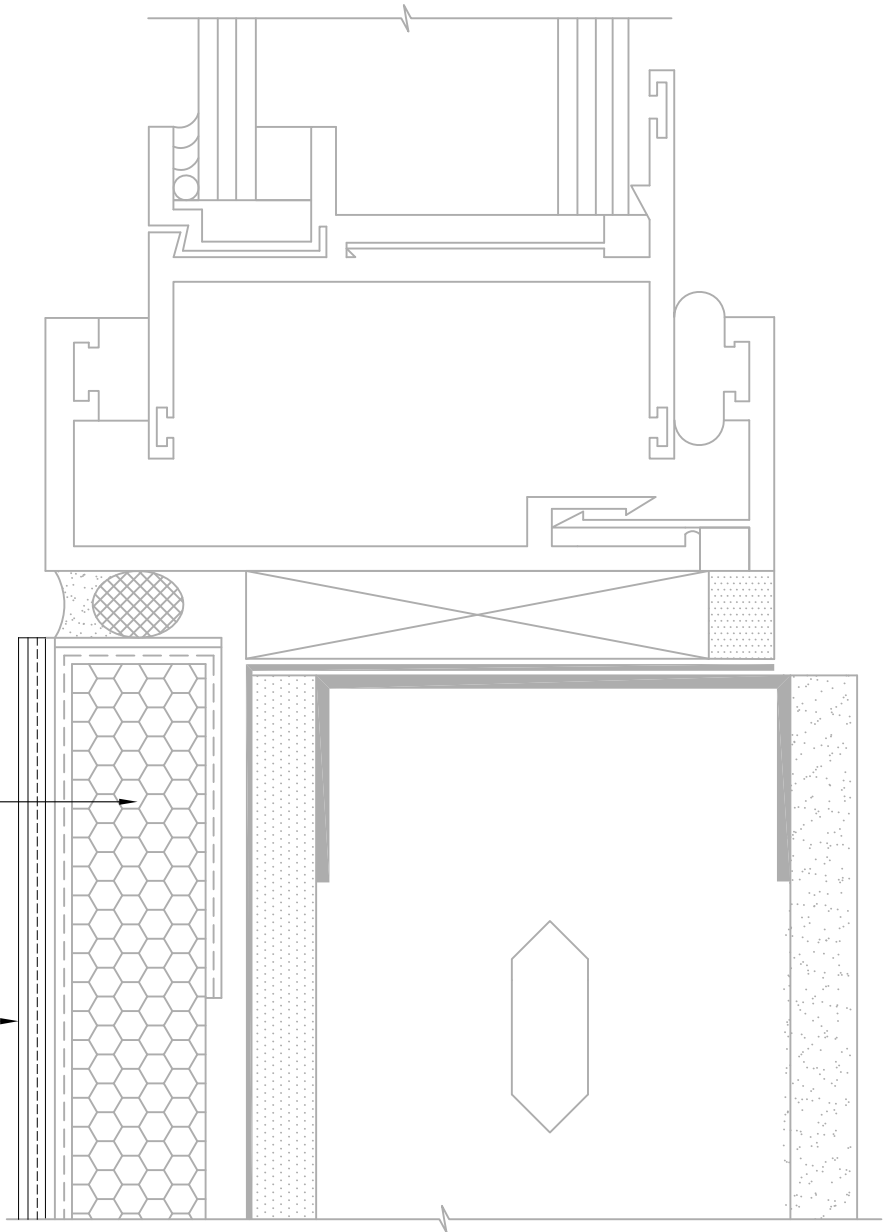
EXISTING EIFS

FINESTONE LAMINA:

FINESTONE BASE COAT

FINESTONE REINFORCING MESH

FINESTONE FINISH COAT



\*BY OTHERS

REFERENCE reFINE EIFS PROCEDURES AND RESURFACING SPECIFICATION FOR FURTHER INFORMATION

## TYPICAL WINDOW SILL (FLUSH)

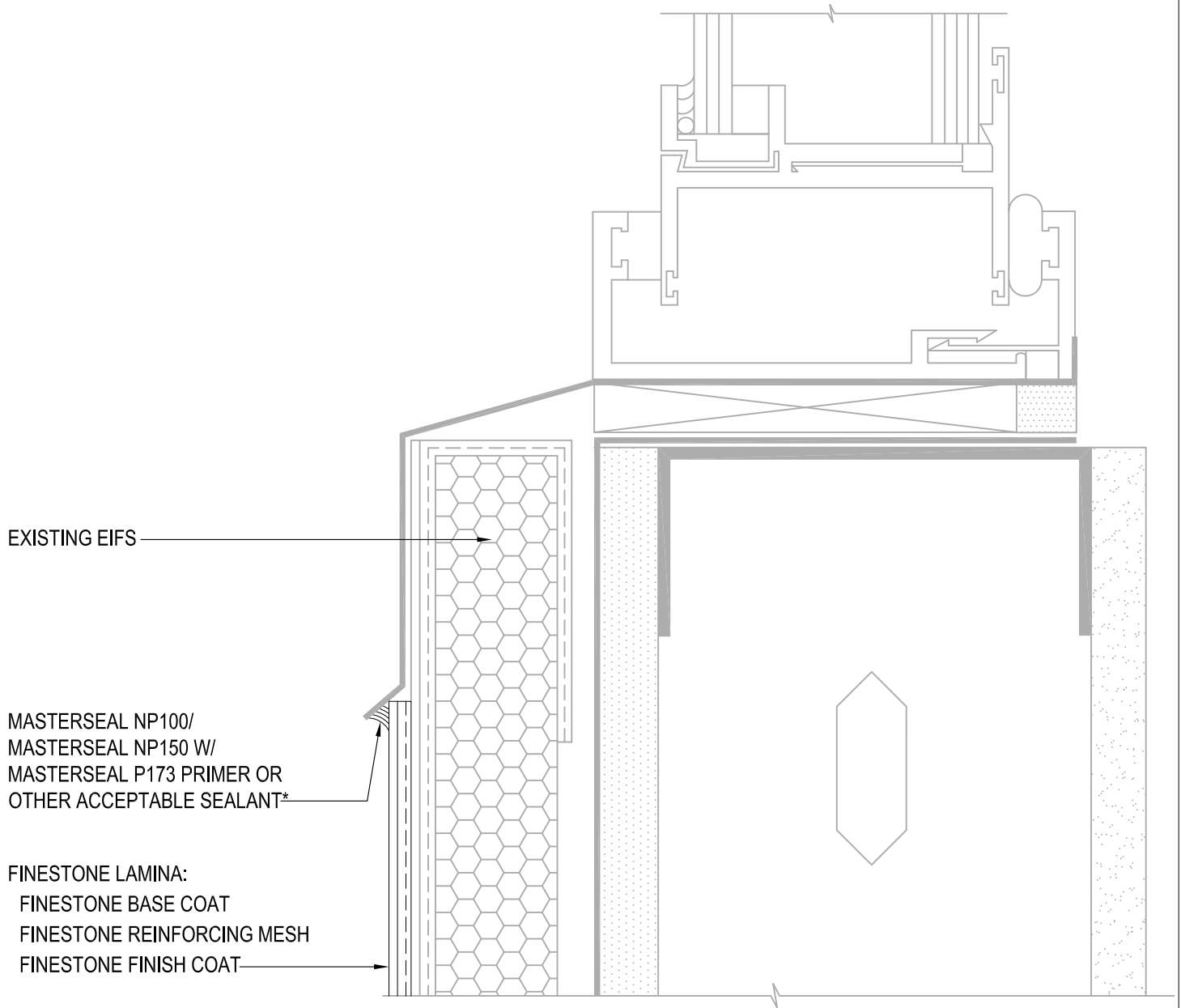
### FINESTONE EIFS RESURFACING SYSTEM

SCALE: NTS

**07**

Structure, substrates, flashing, and other items which are not part of the BASF FINESTONE *EIFS Resurfacing System* are the responsibility of others. This detail is subject to change without notice. BASF Corporation - Wall Systems (herein after BASF Wall Systems) accepts no liability for the end use of this detail. For conditions not shown, consult BASF Wall Systems for review of specific detail.

**BASF**  
We create chemistry



EXISTING EIFS

MASTERSEAL NP100/  
 MASTERSEAL NP150 W/  
 MASTERSEAL P173 PRIMER OR  
 OTHER ACCEPTABLE SEALANT\*

FINESTONE LAMINA:  
 FINESTONE BASE COAT  
 FINESTONE REINFORCING MESH  
 FINESTONE FINISH COAT

\*BY OTHERS

REFERENCE reFINE EIFS PROCEDURES AND RESURFACING SPECIFICATION FOR FURTHER INFORMATION

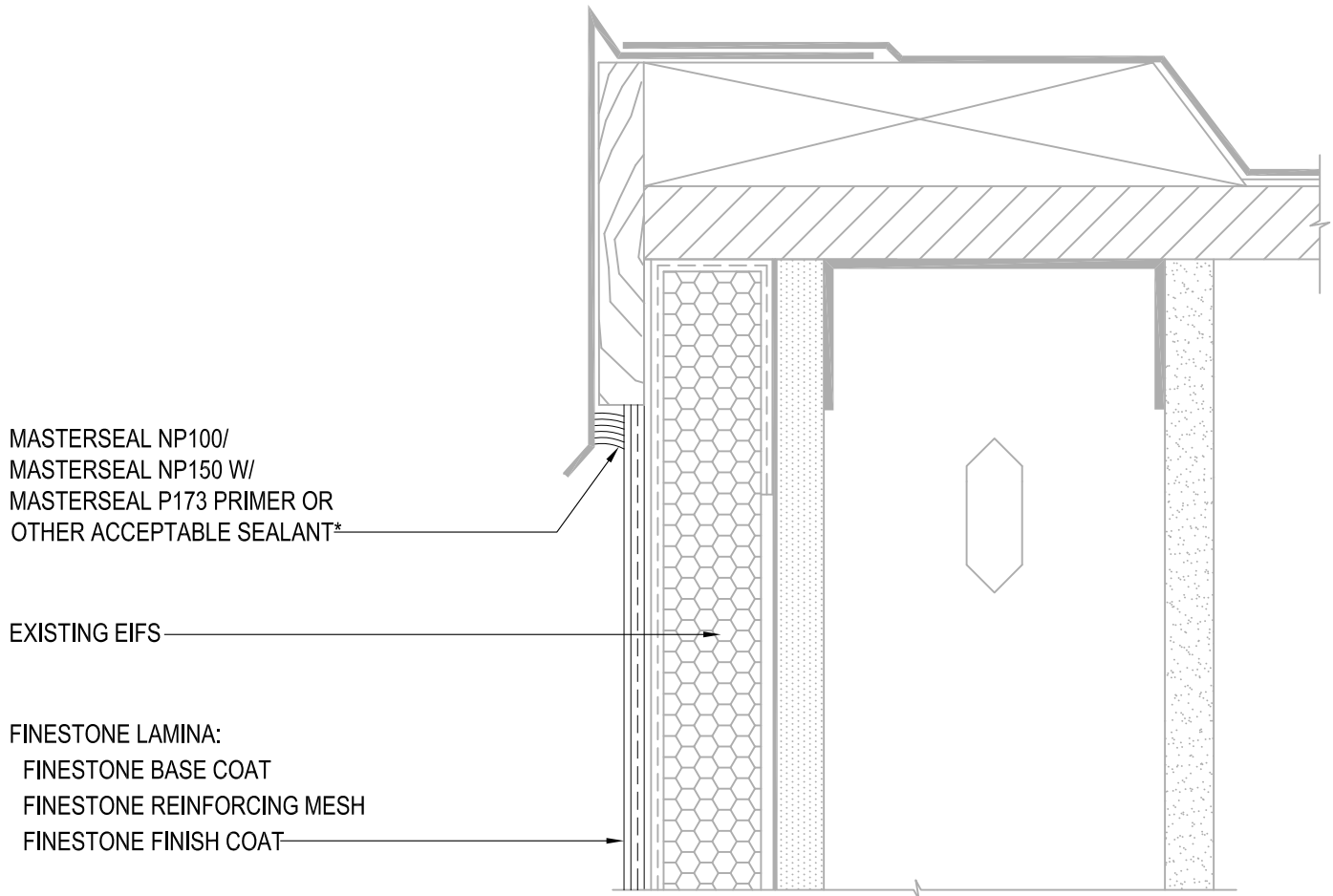
## TYPICAL WINDOW SILL (RECESSED) FINESTONE EIFS RESURFACING SYSTEM

SCALE: NTS

08

Structure, substrates, flashing, and other items which are not part of the BASF FINESTONE *EIFS Resurfacing System* are the responsibility of others. This detail is subject to change without notice. BASF Corporation - Wall Systems (herein after BASF Wall Systems) accepts no liability for the end use of this detail. For conditions not shown, consult BASF Wall Systems for review of specific detail.

**BASF**  
 We create chemistry



\*BY OTHERS

REFERENCE reFINE EIFS PROCEDURES AND RESURFACING SPECIFICATION FOR FURTHER INFORMATION

## TYPICAL ROOF EDGE FLASHING FINESTONE EIFS RESURFACING SYSTEM

SCALE: NTS

09

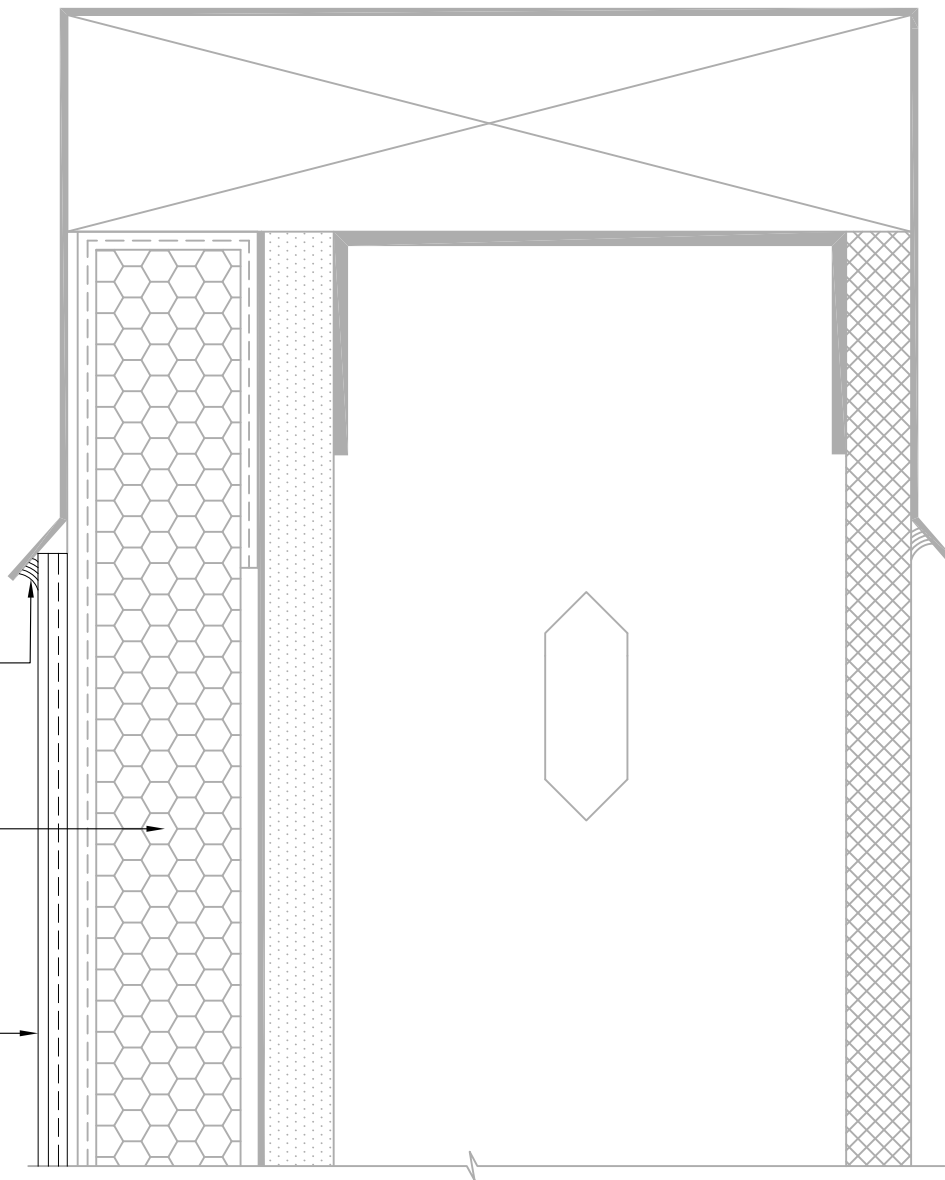
Structure, substrates, flashing, and other items which are not part of the BASF FINESTONE *EIFS Resurfacing System* are the responsibility of others. This detail is subject to change without notice. BASF Corporation - Wall Systems (herein after BASF Wall Systems) accepts no liability for the end use of this detail. For conditions not shown, consult BASF Wall Systems for review of specific detail.

**BASF**  
 We create chemistry

MASTERSEAL NP100/  
 MASTERSEAL NP150 W/  
 MASTERSEAL P173 PRIMER OR  
 OTHER ACCEPTABLE SEALANT\*

EXISTING EIFS

FINESTONE LAMINA:  
 FINESTONE BASE COAT  
 FINESTONE REINFORCING MESH  
 FINESTONE FINISH COAT



\*BY OTHERS

REFERENCE reFINE EIFS PROCEDURES AND RESURFACING SPECIFICATION FOR FURTHER INFORMATION

## TYPICAL METAL COPING

## FINESTONE EIFS RESURFACING SYSTEM

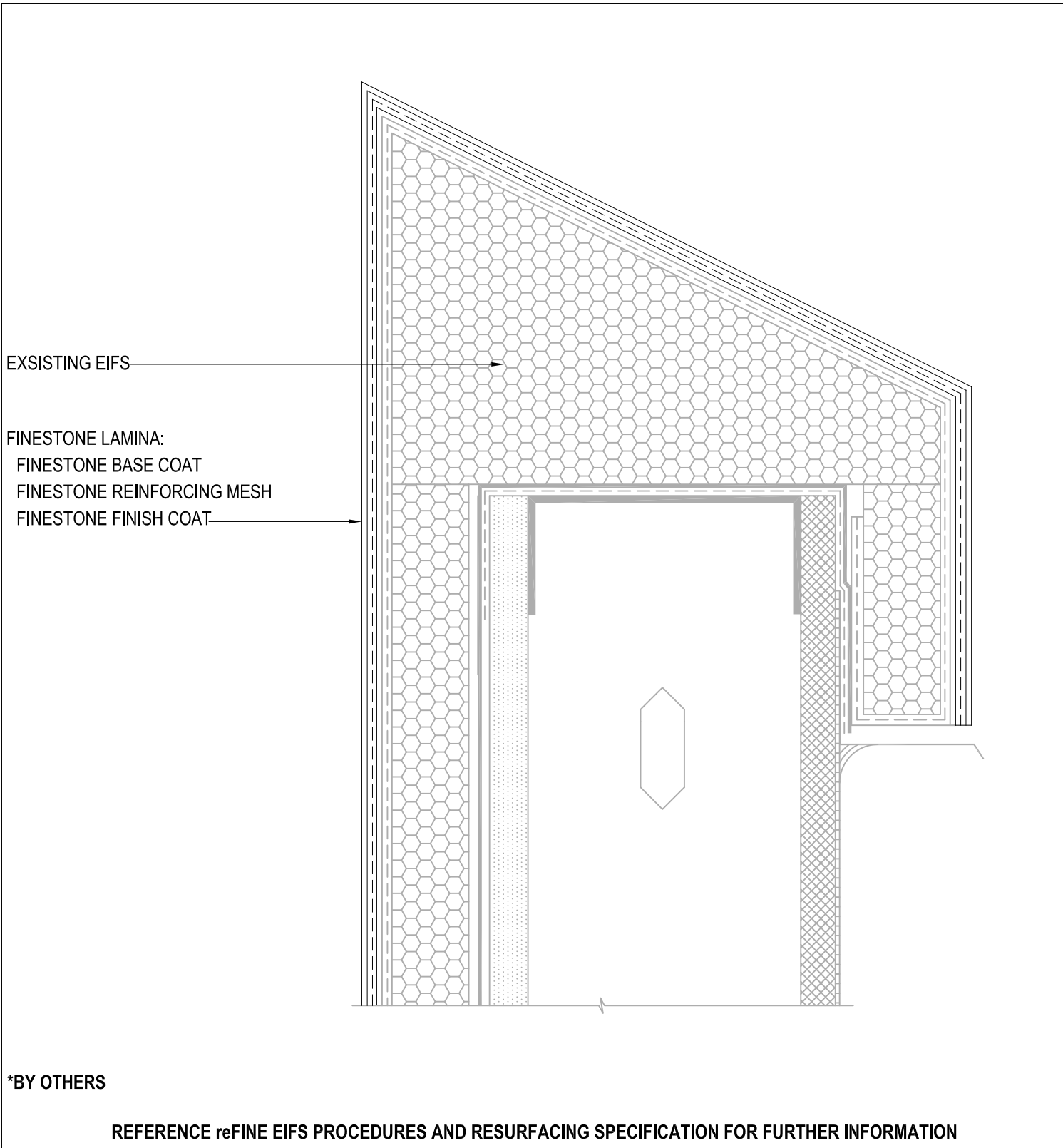
SCALE: NTS

10

Structure, substrates, flashing, and other items which are not part of the BASF FINESTONE *EIFS Resurfacing System* are the responsibility of others. This detail is subject to change without notice. BASF Corporation - Wall Systems (herein after BASF Wall Systems) accepts no liability for the end use of this detail. For conditions not shown, consult BASF Wall Systems for review of specific detail.

**BASF**  
 We create chemistry





## TYPICAL PARAPET CAP

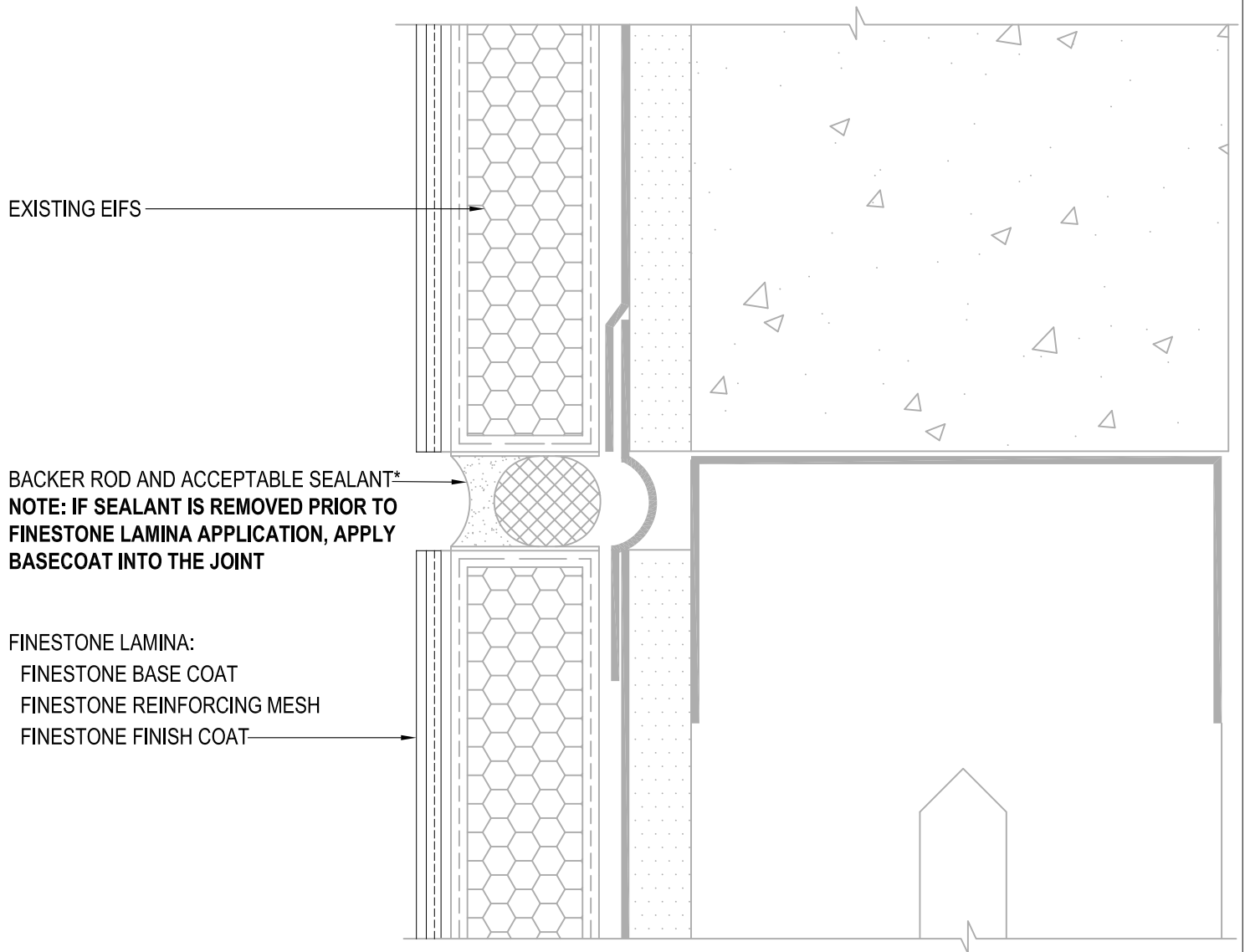
### FINESTONE EIFS RESURFACING SYSTEM

SCALE: NTS

11

Structure, substrates, flashing, and other items which are not part of the BASF FINESTONE *EIFS Resurfacing System* are the responsibility of others. This detail is subject to change without notice. BASF Corporation - Wall Systems (herein after BASF Wall Systems) accepts no liability for the end use of this detail. For conditions not shown, consult BASF Wall Systems for review of specific detail.

**BASF**  
We create chemistry



EXISTING EIFS

BACKER ROD AND ACCEPTABLE SEALANT\*  
**NOTE: IF SEALANT IS REMOVED PRIOR TO FINESTONE LAMINA APPLICATION, APPLY BASECOAT INTO THE JOINT**

FINESTONE LAMINA:  
 FINESTONE BASE COAT  
 FINESTONE REINFORCING MESH  
 FINESTONE FINISH COAT

\*BY OTHERS

REFERENCE reFINE EIFS PROCEDURES AND RESURFACING SPECIFICATION FOR FURTHER INFORMATION

## TYPICAL EXPANSION JOINT AT FLOORLINE FINESTONE EIFS RESURFACING SYSTEM

SCALE: NTS

12

Structure, substrates, flashing, and other items which are not part of the BASF FINESTONE *EIFS Resurfacing System* are the responsibility of others. This detail is subject to change without notice. BASF Corporation - Wall Systems (herein after BASF Wall Systems) accepts no liability for the end use of this detail. For conditions not shown, consult BASF Wall Systems for review of specific detail.

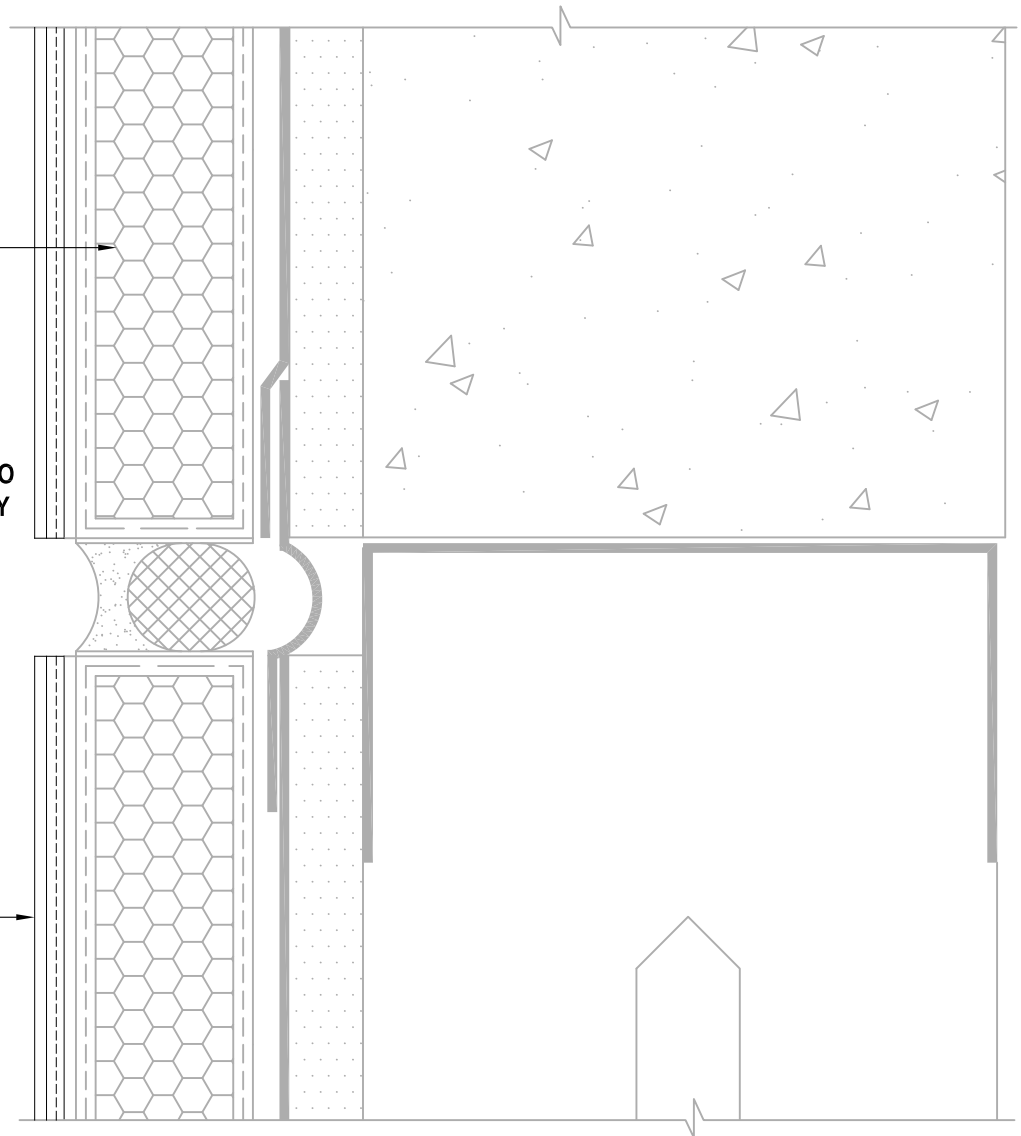
**BASF**  
 We create chemistry

EXISTING EIFS

NOTE: IF SEALANT IS REMOVED PRIOR TO  
FINESTONE LAMINA APPLICATION, APPLY  
BASECOAT INTO THE JOINT. USE  
MASTERSEAL NP100 / MASTERSEAL  
NP150 W/ MASTERSEAL P173 PRIMER OR  
OTHER ACCEPTABLE SEALANT\*

FINESTONE LAMINA:  
FINESTONE BASE COAT  
FINESTONE REINFORCING MESH  
FINESTONE FINISH COAT

\*BY OTHERS



REFERENCE reFINE EIFS PROCEDURES AND RESURFACING SPECIFICATION FOR FURTHER INFORMATION

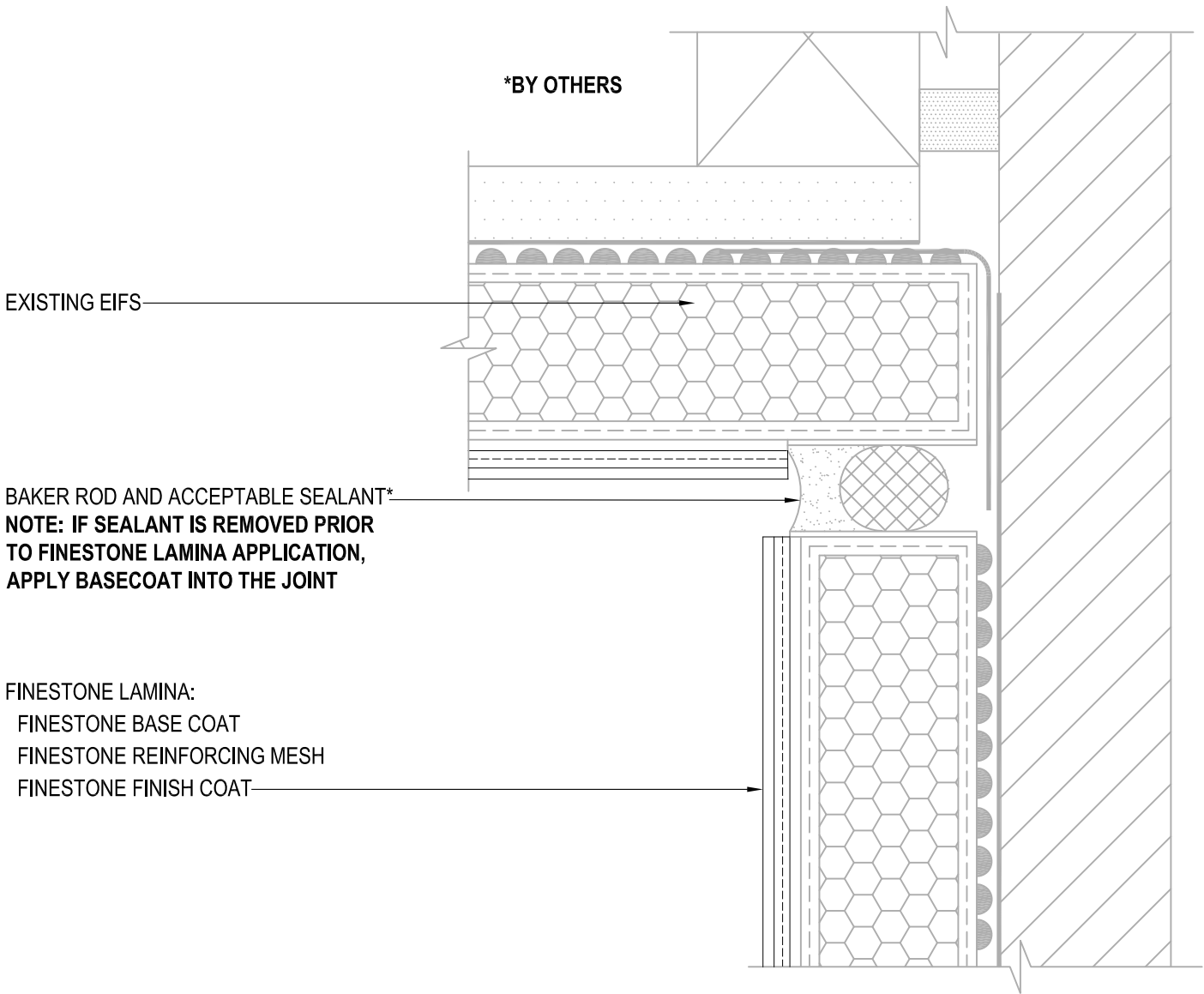
## TYPICAL EXPANSION JOINT AT FLOORLINE FINESTONE EIFS RESURFACING SYSTEM

SCALE: NTS

12

Structure, substrates, flashing, and other items which are not part of the BASF FINESTONE *EIFS Resurfacing System* are the responsibility of others. This detail is subject to change without notice. BASF Corporation - Wall Systems (herein after BASF Wall Systems) accepts no liability for the end use of this detail. For conditions not shown, consult BASF Wall Systems for review of specific detail.

**BASF**  
We create chemistry



EXISTING EIFS

\*BY OTHERS

BAKER ROD AND ACCEPTABLE SEALANT\*

NOTE: IF SEALANT IS REMOVED PRIOR TO FINESTONE LAMINA APPLICATION, APPLY BASECOAT INTO THE JOINT

FINESTONE LAMINA:  
 FINESTONE BASE COAT  
 FINESTONE REINFORCING MESH  
 FINESTONE FINISH COAT

REFERENCE reFINE EIFS PROCEDURES AND RESURFACING SPECIFICATION FOR FURTHER INFORMATION

## TYPICAL EXPANSION JOINT AT CHANGE IN SUBSTRATE FINESTONE EIFS RESURFACING SYSTEM

SCALE: NTS

13

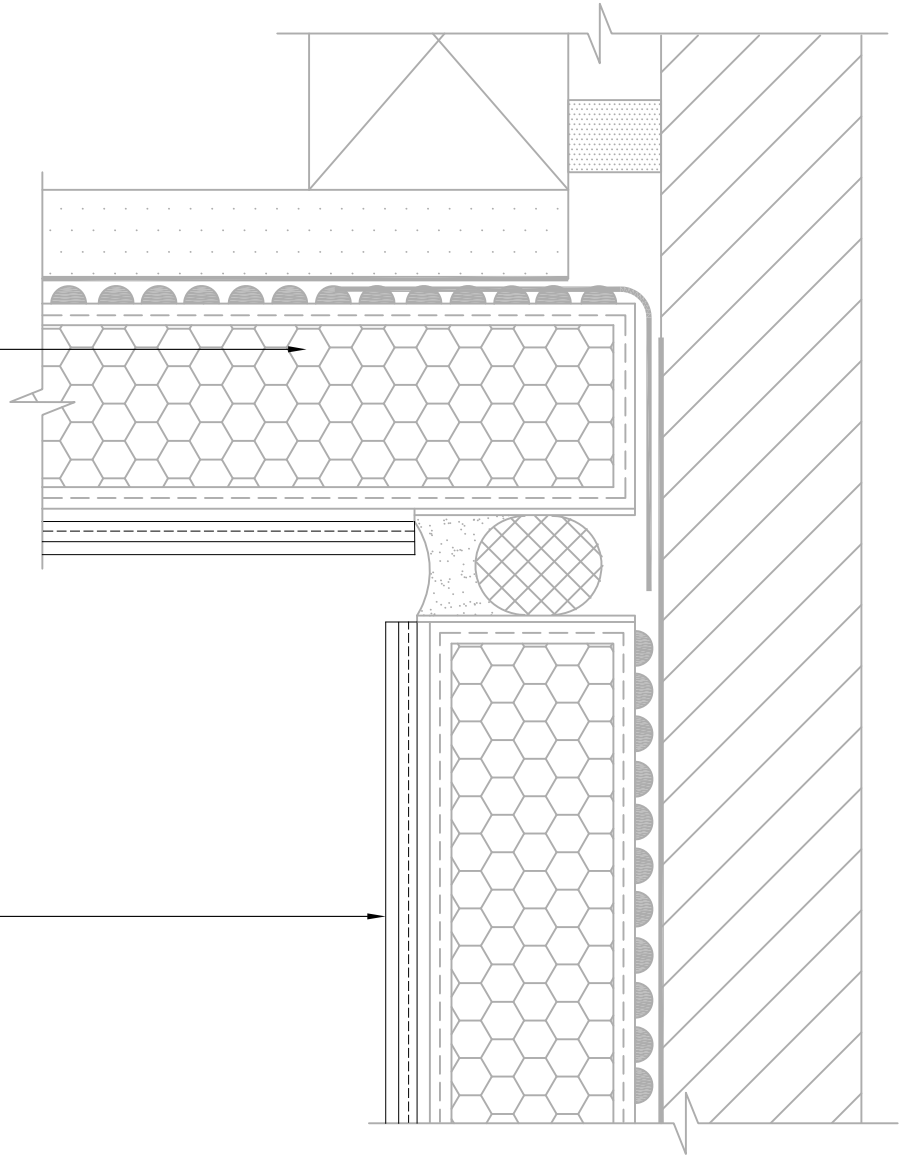
Structure, substrates, flashing, and other items which are not part of the BASF FINESTONE *EIFS Resurfacing System* are the responsibility of others. This detail is subject to change without notice. BASF Corporation - Wall Systems (herein after BASF Wall Systems) accepts no liability for the end use of this detail. For conditions not shown, consult BASF Wall Systems for review of specific detail.

**BASF**  
 We create chemistry

EXISTING EIFS

NOTE: IF SEALANT IS REMOVED PRIOR TO FINESTONE LAMINA APPLICATION, APPLY BASECOAT INTO THE JOINT. USE MASTERSEAL NP100 / MASTERSEAL NP150 W/ MASTERSEAL P173 PRIMER OR OTHER ACCEPTABLE SEALANT\*

FINESTONE LAMINA:  
FINESTONE BASE COAT  
FINESTONE REINFORCING MESH  
FINESTONE FINISH COAT



\*BY OTHERS

REFERENCE reFINE EIFS PROCEDURES AND RESURFACING SPECIFICATION FOR FURTHER INFORMATION

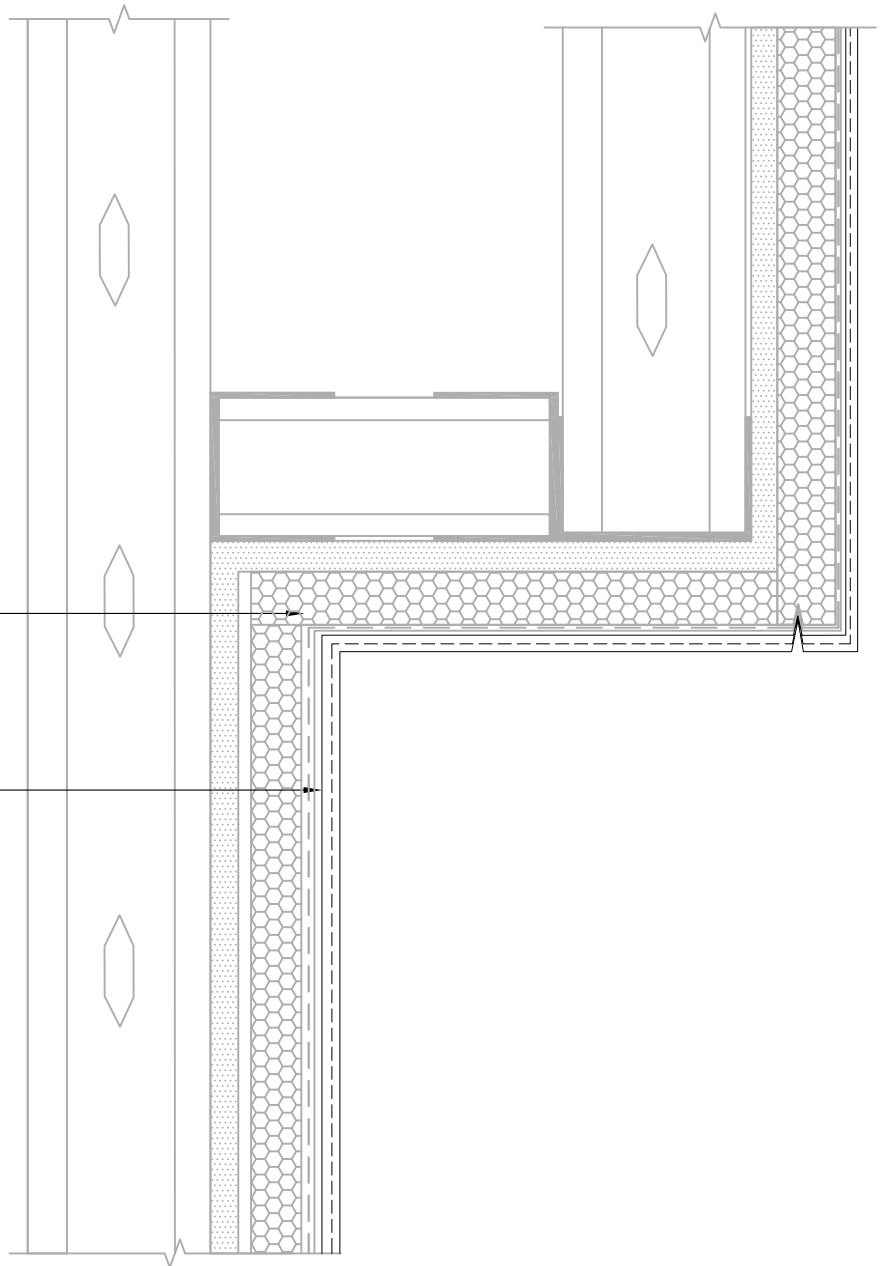
## TYPICAL EXPANSION JOINT AT CHANGE IN SUBSTRATE FINESTONE EIFS RESURFACING SYSTEM

SCALE: NTS

13

Structure, substrates, flashing, and other items which are not part of the BASF FINESTONE *EIFS Resurfacing System* are the responsibility of others. This detail is subject to change without notice. BASF Corporation - Wall Systems (herein after BASF Wall Systems) accepts no liability for the end use of this detail. For conditions not shown, consult BASF Wall Systems for review of specific detail.

**BASF**  
We create chemistry



EXISTING EIFS

FINESTONE LAMINA:

FINESTONE BASE COAT

FINESTONE REINFORCING MESH

FINESTONE FINISH COAT

\*BY OTHERS

REFERENCE reFINE EIFS PROCEDURES AND RESURFACING SPECIFICATION FOR FURTHER INFORMATION

## TYPICAL TRANSITION AT SOFFIT AND FASCIA FINESTONE EIFS RESURFACING SYSTEM

SCALE: NTS

14

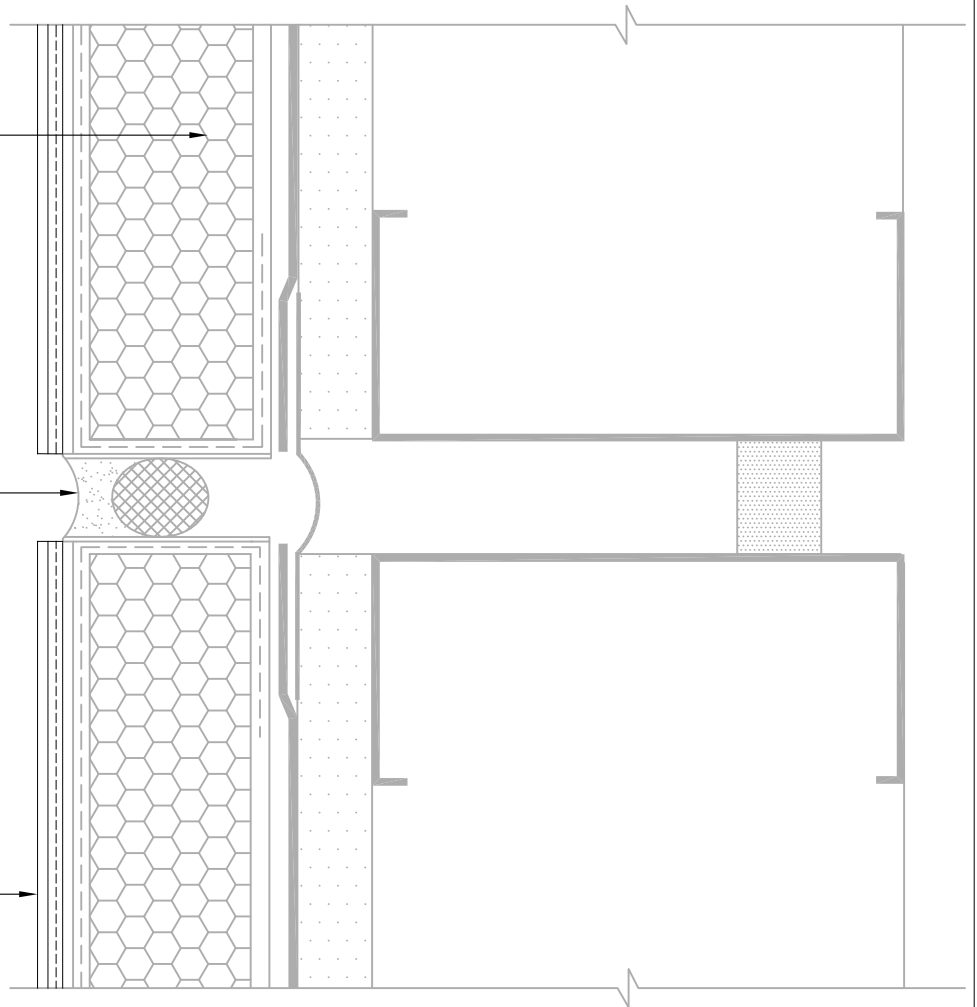
Structure, substrates, flashing, and other items which are not part of the BASF FINESTONE *EIFS Resurfacing System* are the responsibility of others. This detail is subject to change without notice. BASF Corporation - Wall Systems (herein after BASF Wall Systems) accepts no liability for the end use of this detail. For conditions not shown, consult BASF Wall Systems for review of specific detail.

**BASF**  
We create chemistry

EXISTING EIFS

BACKER ROD AND ACCEPTABLE SEALANT \*  
**NOTE: IF SEALANT IS REMOVED PRIOR TO  
FINESTONE LAMINA APPLICATION, APPLY  
BASECOAT INTO THE JOINT**

FINESTONE LAMINA:  
FINESTONE BASE COAT  
FINESTONE REINFORCING MESH  
FINESTONE FINISH COAT



\*BY OTHERS

REFERENCE reFINE EIFS PROCEDURES AND RESURFACING SPECIFICATION FOR FURTHER INFORMATION

## TYPICAL VERTICAL EXPANSION JOINT FINESTONE EIFS RESURFACING SYSTEM

SCALE: NTS

15

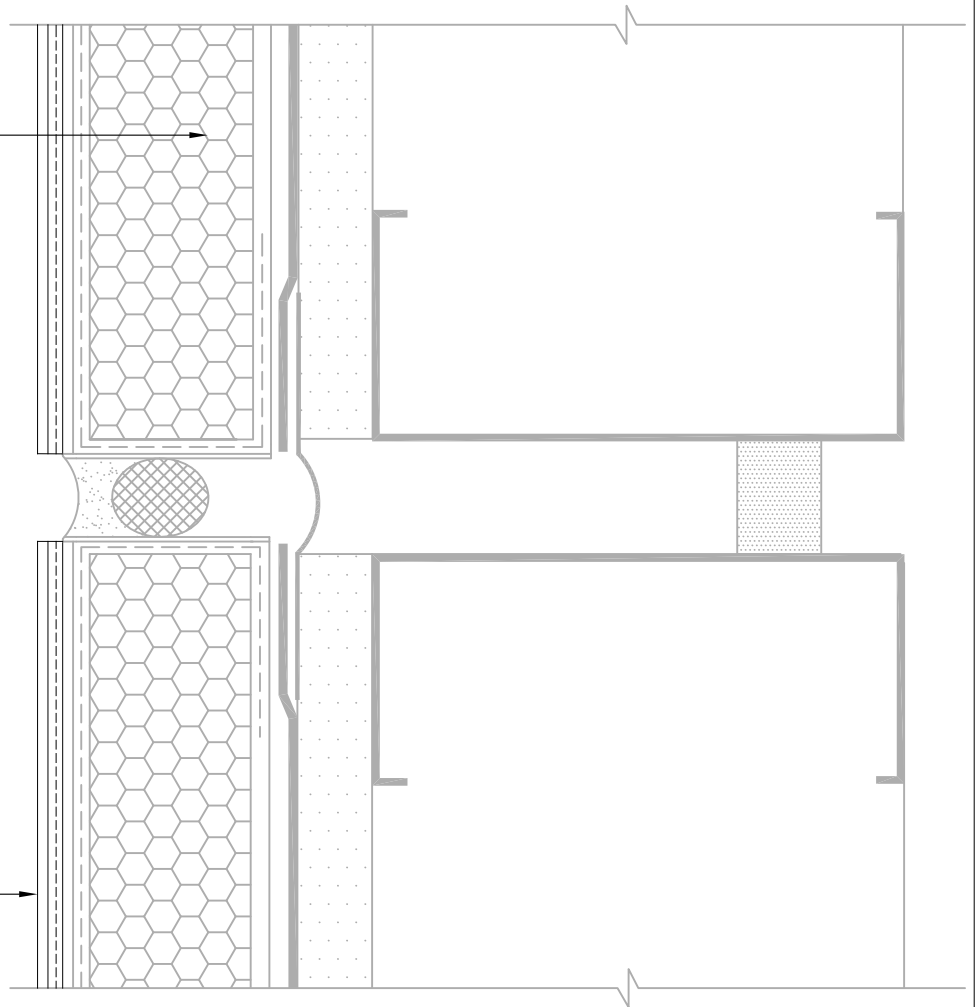
Structure, substrates, flashing, and other items which are not part of the BASF FINESTONE *EIFS Resurfacing System* are the responsibility of others. This detail is subject to change without notice. BASF Corporation - Wall Systems (herein after BASF Wall Systems) accepts no liability for the end use of this detail. For conditions not shown, consult BASF Wall Systems for review of specific detail.

  
We create chemistry

EXISTING EIFS

NOTE: IF SEALANT IS REMOVED PRIOR TO  
FINESTONE LAMINA APPLICATION, APPLY  
BASECOAT INTO THE JOINT. USE  
MASTERSEAL NP100 / MASTERSEAL NP150  
W/ MASTERSEAL P173 PRIMER OR OTHER  
ACCEPTABLE SEALANT\*

FINESTONE LAMINA:  
FINESTONE BASE COAT  
FINESTONE REINFORCING MESH  
FINESTONE FINISH COAT



\*BY OTHERS

REFERENCE reFINE EIFS PROCEDURES AND RESURFACING SPECIFICATION FOR FURTHER INFORMATION

## TYPICAL VERTICAL EXPANSION JOINT FINESTONE EIFS RESURFACING SYSTEM

SCALE: NTS

15

Structure, substrates, flashing, and other items which are not part of the BASF FINESTONE *EIFS Resurfacing System* are the responsibility of others. This detail is subject to change without notice. BASF Corporation - Wall Systems (herein after BASF Wall Systems) accepts no liability for the end use of this detail. For conditions not shown, consult BASF Wall Systems for review of specific detail.

  
We create chemistry



EXISTING EIFS

BACKER ROD AND ACCEPTABLE SEALANT  
**NOTE: IF SEALANT IS REMOVED PRIOR TO  
FINESTONE LAMINA APPLICATION,  
APPLY BASECOAT INTO THE JOINT**

FINESTONE LAMINA:  
FINESTONE BASE COAT  
FINESTONE REINFORCING MESH  
FINESTONE FINISH COAT

\*BY OTHERS

REFERENCE reFINE EIFS PROCEDURES AND RESURFACING SPECIFICATION FOR FURTHER INFORMATION

## TYPICAL PIPE PENETRATION

### FINESTONE EIFS RESURFACING SYSTEM

SCALE: NTS

16

Structure, substrates, flashing, and other items which are not part of the BASF FINESTONE *EIFS Resurfacing System* are the responsibility of others. This detail is subject to change without notice. BASF Corporation - Wall Systems (herein after BASF Wall Systems) accepts no liability for the end use of this detail. For conditions not shown, consult BASF Wall Systems for review of specific detail.

**BASF**  
We create chemistry

EXISTING EIFS

NOTE: IF SEALANT IS REMOVED PRIOR TO  
FINESTONE LAMINA APPLICATION, APPLY  
BASECOAT INTO THE JOINT. USE  
MASTERSEAL NP100 / MASTERSEAL NP150  
W/ MASTERSEAL P173 PRIMER OR OTHER  
ACCEPTABLE SEALANT\*

FINESTONE LAMINA:  
FINESTONE BASE COAT  
FINESTONE REINFORCING MESH  
FINESTONE FINISH COAT

\*BY OTHERS

REFERENCE reFINE EIFS PROCEDURES AND RESURFACING SPECIFICATION FOR FURTHER INFORMATION

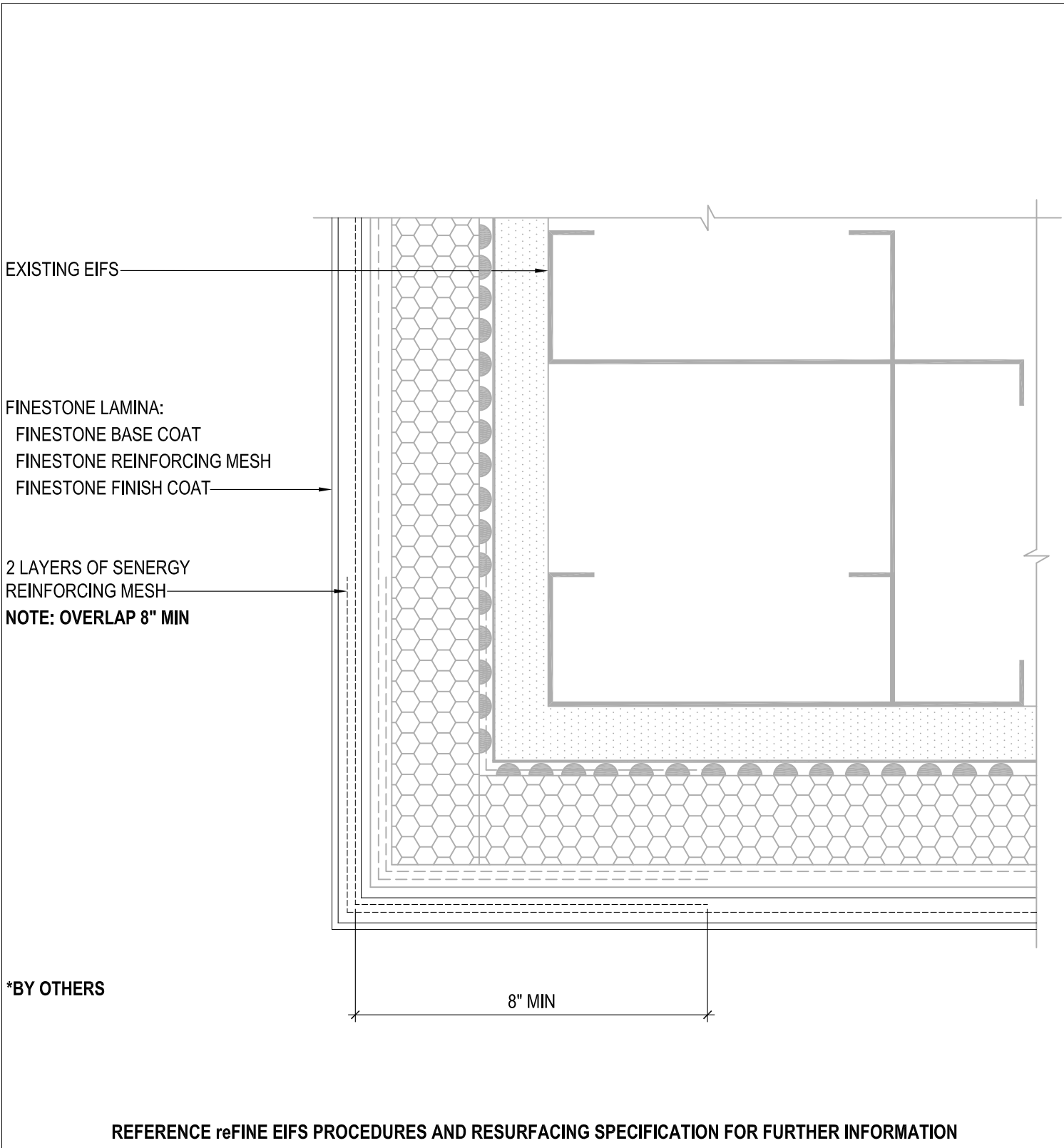
## TYPICAL PIPE PENETRATION FINESTONE EIFS RESURFACING SYSTEM

SCALE: NTS

16

Structure, substrates, flashing, and other items which are not part of the BASF FINESTONE *EIFS Resurfacing System* are the responsibility of others. This detail is subject to change without notice. BASF Corporation - Wall Systems (herein after BASF Wall Systems) accepts no liability for the end use of this detail. For conditions not shown, consult BASF Wall Systems for review of specific detail.

**BASF**  
We create chemistry



## TYPICAL CORNER MESH APPLICATION FINESTONE EIFS RESURFACING SYSTEM

SCALE: NTS

17

Structure, substrates, flashing, and other items which are not part of the BASF FINESTONE *EIFS Resurfacing System* are the responsibility of others. This detail is subject to change without notice. BASF Corporation - Wall Systems (herein after BASF Wall Systems) accepts no liability for the end use of this detail. For conditions not shown, consult BASF Wall Systems for review of specific detail.

■ BASF

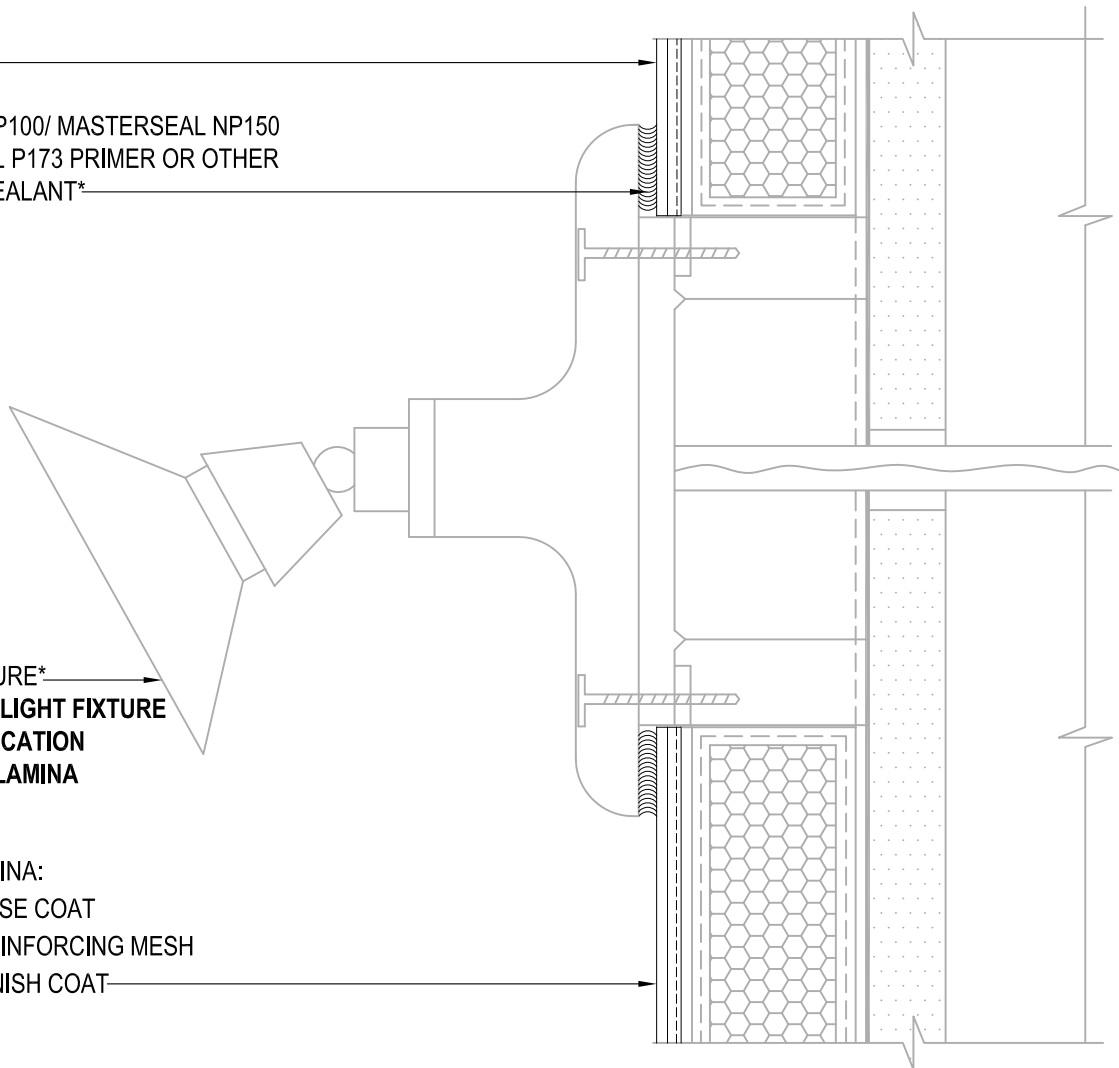
We create chemistry

EXISTING EIFS

MASTERSEAL NP100/ MASTERSEAL NP150  
W/ MASTERSEAL P173 PRIMER OR OTHER  
ACCEPTABLE SEALANT\*

SET LIGHT FIXTURE\*  
NOTE: REMOVE LIGHT FIXTURE  
PRIOR TO APPLICATION  
OF FINESTONE LAMINA

FINESTONE LAMINA:  
FINESTONE BASE COAT  
FINESTONE REINFORCING MESH  
FINESTONE FINISH COAT



\*BY OTHERS

REFERENCE reFINE EIFS PROCEDURES AND RESURFACING SPECIFICATION FOR FURTHER INFORMATION

## TYPICAL LIGHT FIXTURE

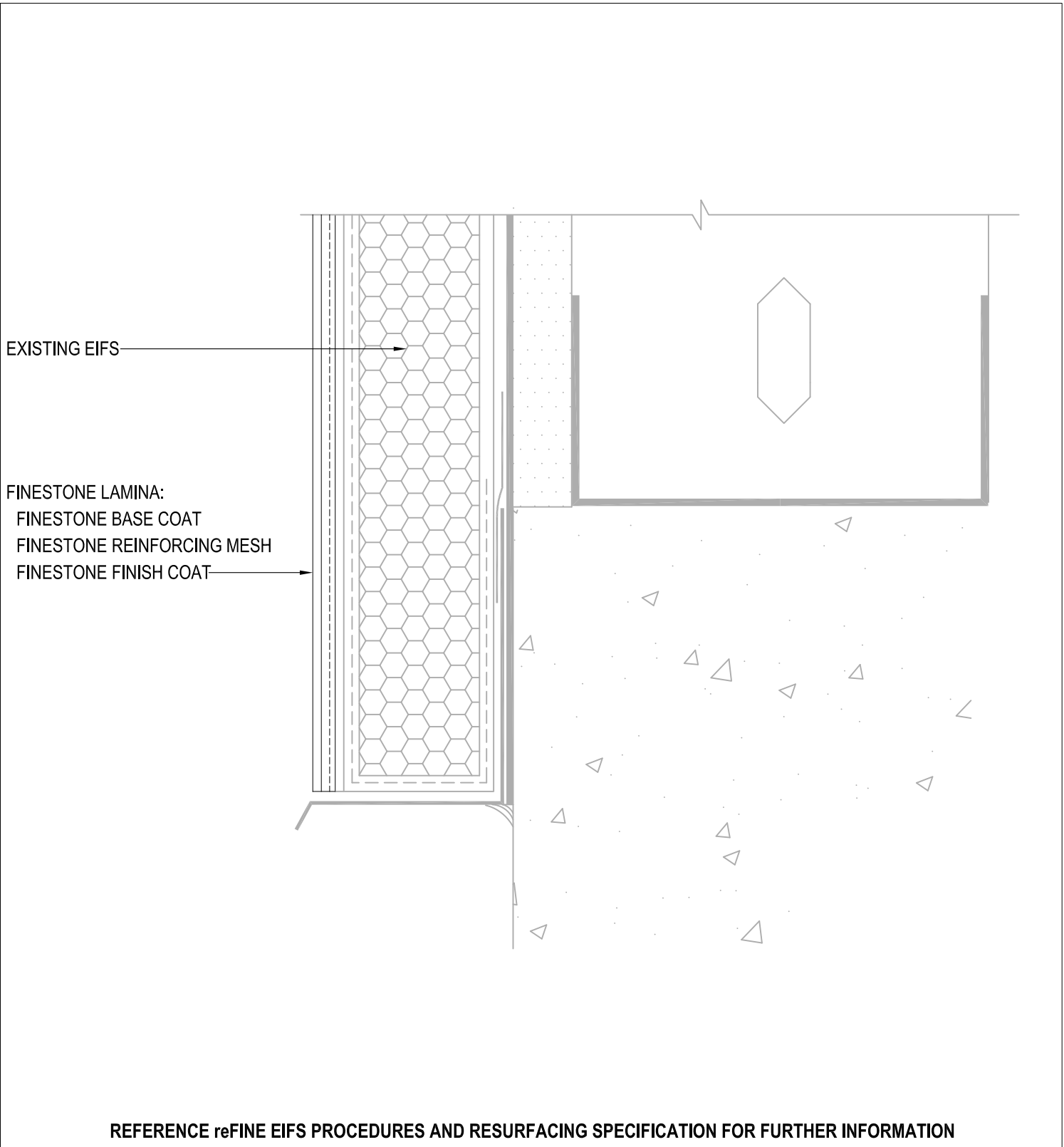
## FINESTONE EIFS RESURFACING SYSTEM

SCALE: NTS

18

Structure, substrates, flashing, and other items which are not part of the BASF FINESTONE *EIFS Resurfacing System* are the responsibility of others. This detail is subject to change without notice. BASF Corporation - Wall Systems (herein after BASF Wall Systems) accepts no liability for the end use of this detail. For conditions not shown, consult BASF Wall Systems for review of specific detail.

**BASF**  
We create chemistry



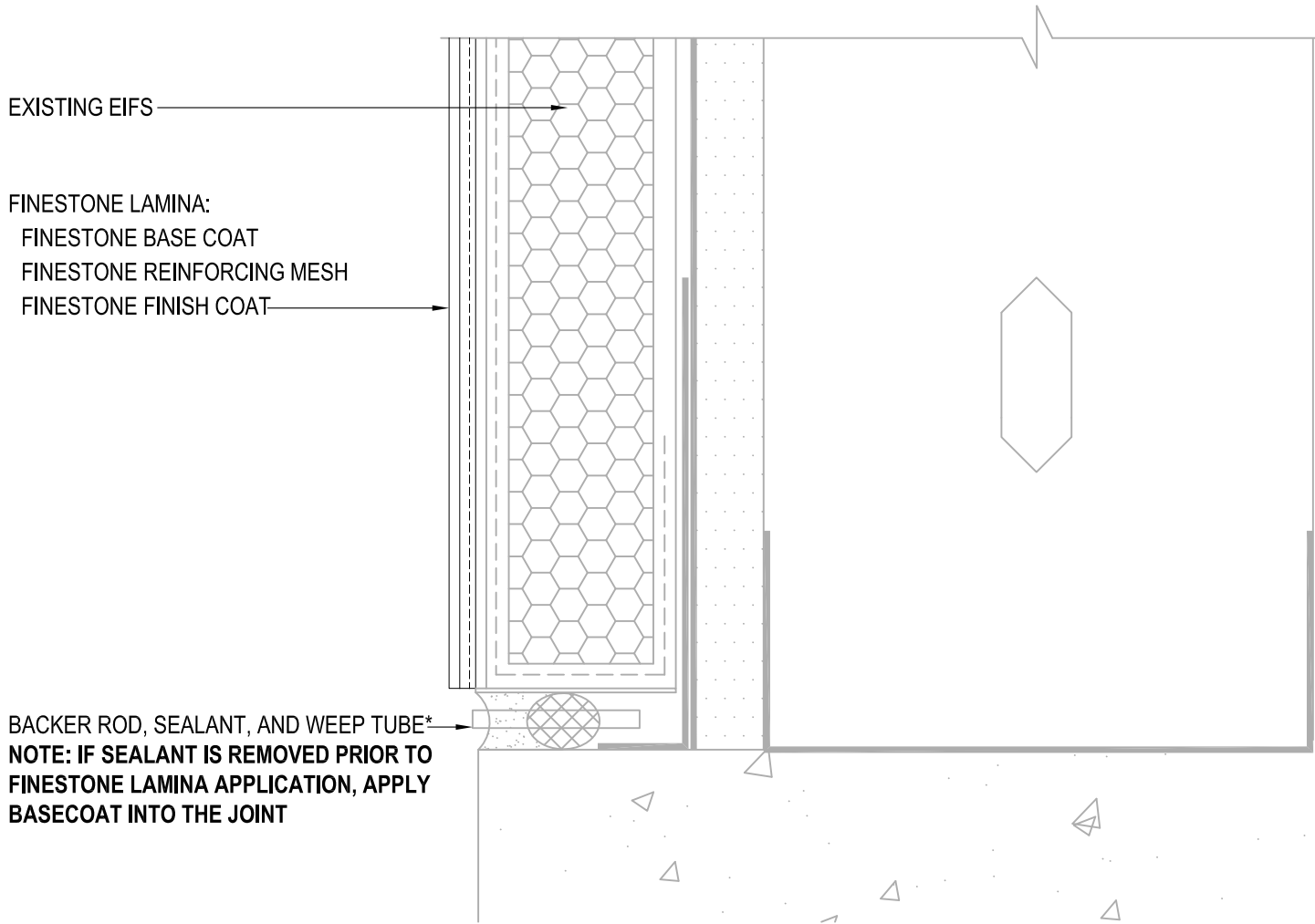
## TYPICAL TERMINATION AT FOUNDATION FINESTONE EIFS RESURFACING SYSTEM

SCALE: NTS

19

Structure, substrates, flashing, and other items which are not part of the BASF FINESTONE *EIFS Resurfacing System* are the responsibility of others. This detail is subject to change without notice. BASF Corporation - Wall Systems (herein after BASF Wall Systems) accepts no liability for the end use of this detail. For conditions not shown, consult BASF Wall Systems for review of specific detail.

**BASF**  
We create chemistry



\*BY OTHERS

REFERENCE reFINE EIFS PROCEDURES AND RESURFACING SPECIFICATION FOR FURTHER INFORMATION

## TYPICAL TERMINATION AT FOUNDATION (FLUSH) FINESTONE EIFS RESURFACING SYSTEM

SCALE: NTS

20

Structure, substrates, flashing, and other items which are not part of the BASF FINESTONE *EIFS Resurfacing System* are the responsibility of others. This detail is subject to change without notice. BASF Corporation - Wall Systems (herein after BASF Wall Systems) accepts no liability for the end use of this detail. For conditions not shown, consult BASF Wall Systems for review of specific detail.

**BASF**  
 We create chemistry

EXISTING EIFS

FINESTONE LAMINA:

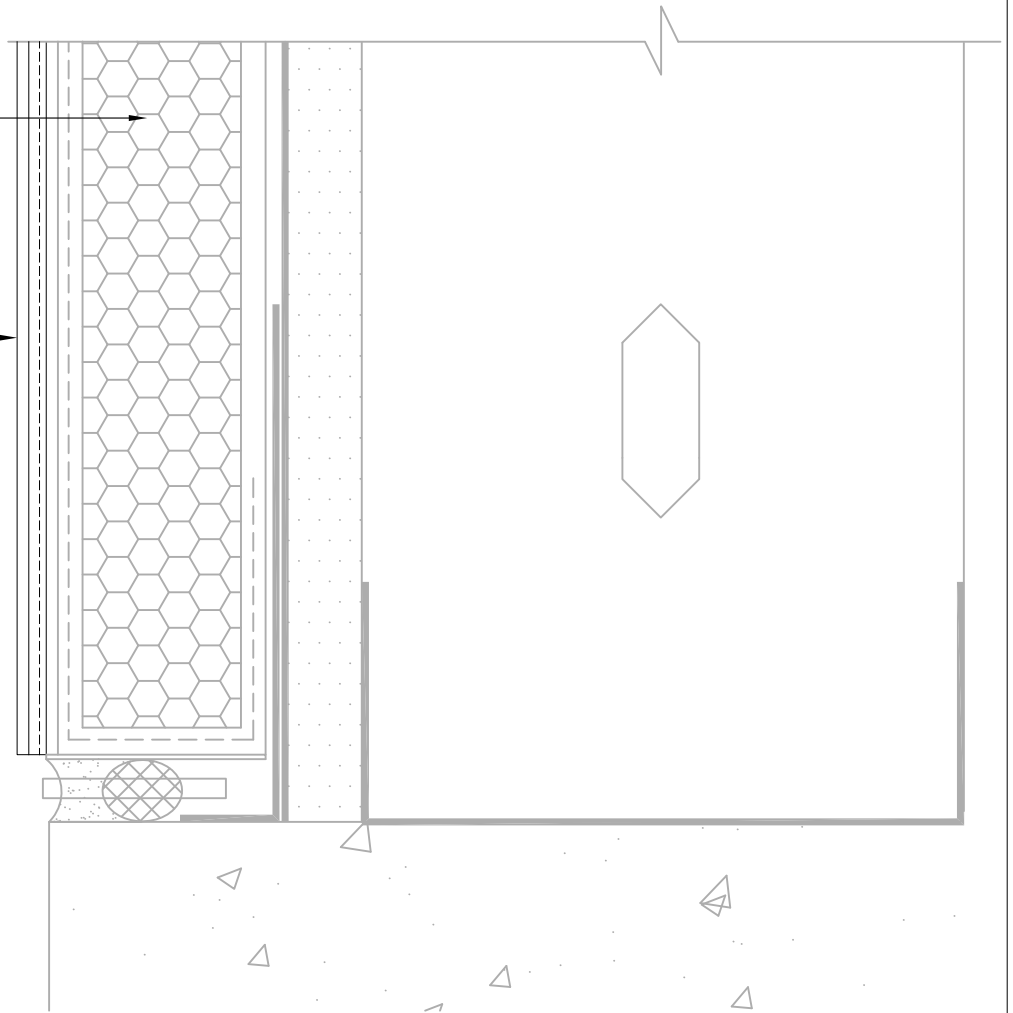
FINESTONE BASE COAT

FINESTONE REINFORCING MESH

FINESTONE FINISH COAT

NOTE: IF SEALANT IS REMOVED PRIOR TO FINESTONE LAMINA APPLICATION, APPLY BASECOAT INTO THE JOINT. USE MASTERSEAL NP100 / MASTERSEAL NP150 W/ MASTERSEAL P173 PRIMER OR OTHER ACCEPTABLE SEALANT\*

\*BY OTHERS



REFERENCE reFINE EIFS PROCEDURES AND RESURFACING SPECIFICATION FOR FURTHER INFORMATION

## TYPICAL TERMINATION AT FOUNDATION (FLUSH)

### FINESTONE EIFS RESURFACING SYSTEM

SCALE: NTS

20

Structure, substrates, flashing, and other items which are not part of the BASF FINESTONE *EIFS Resurfacing System* are the responsibility of others. This detail is subject to change without notice. BASF Corporation - Wall Systems (herein after BASF Wall Systems) accepts no liability for the end use of this detail. For conditions not shown, consult BASF Wall Systems for review of specific detail.

**BASF**  
We create chemistry