



# Platinum CI Stucco Ultra

Continuously Insulated Premium Cement  
Plaster Stucco Rain Screen System  
with Enhanced Water Management  
Featuring Finestop RA/RS/MB  
Air/Water-Resistive Barrier  
Typical Details

A photograph of a multi-story building facade with a Mediterranean or Spanish architectural style. The building features a terracotta-colored stucco finish, arched windows and doorways, and ornate wrought-iron balconies. The sky is a clear, bright blue.

A brand of  
**MASTER**<sup>®</sup>  
**BUILDERS**  
SOLUTIONS

(THIS PAGE INTENTIONALLY LEFT BLANK)

# Platinum CI Stucco Ultra

## Typical Details

### Premium Rain Screen Design Cement Plaster Stucco System

#### Table of Contents

- |  |  |
|--|--|
| 1. Typical Fastening Pattern   | 16. Typical Flanged Window Head  |
| 2. Typical Framed / Sheathed Construction                                | 17. Typical Window Jamb (Flush)  |
| 3. Typical Masonry / Concrete Construction                               | 18. Typical Window Jamb (Recessed)                                       |
| 4. Typical Termination at Foundation – Flush with Casing / Stop Bead     | 19. Typical Flanged Window Jamb  |
| 5. Typical Termination at Foundation with Casing / Stop Bead             | 20. Typical Window Sill (Flush)  |
| 6. Typical Termination at Foundation with CI Weep Track                  | 21. Typical Window Sill (Recessed)                                       |
| 7. Typical Change in Substrate   | 22. Typical Flanged Window Sill  |
| 8. Typical Trim Junction   | 23. Typical Pipe Penetration   |
| 9. Typical Surface Control Joint   | 24. Typical Dryer Vent   |
| 10. Typical Inside Corner Control Joint – Framed / Sheathed Construction | 25. Typical Downspout  |
| 11. Typical EPS Shape Application  | 26. Typical Light Fixture  |
| 12. Typical Corner Bead  | 27. Typical Termination at Metal Coping / Roof Edge Flashing – Option 01 |
| 13. Typical Decorative Shape   | 28. Typical Termination at Metal Coping / Roof Edge Flashing – Option 02 |
| 14. Typical Window Head (Flush)  | 29. Typical Flashing / Termination at Roof                               |
| 15. Typical Window Head (Recessed)                                       | 30. Typical Kick-Out Flashing  |

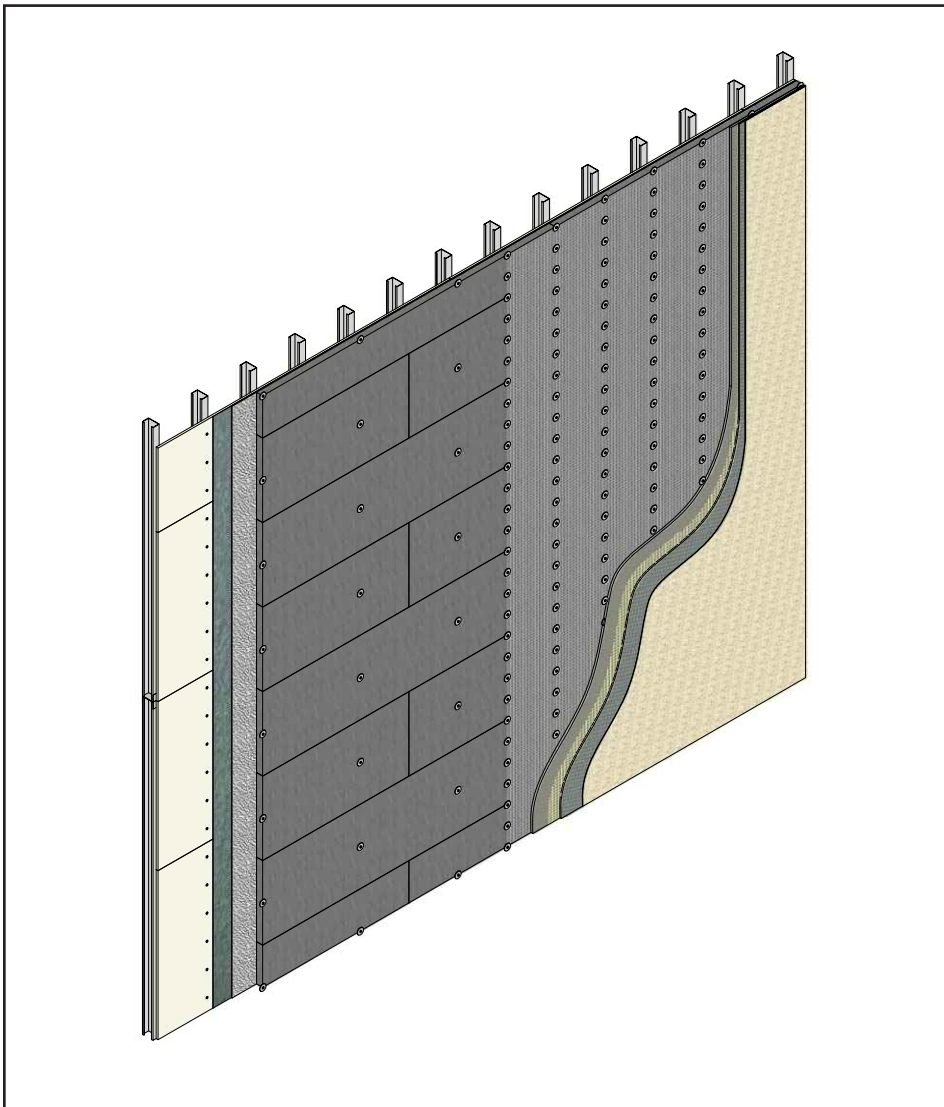
#### Notes:

- **Install Master Builders Solutions materials in accordance with current installation instructions.**
- **Unsatisfactory conditions shall be reported to the General Contractor and corrected before the application of Master Builders Solutions products.**
- **The details within represent Master Builders Solutions Construction Systems US, LLC (hereinafter Master Builders Solutions) latest recommendations. They are presented in good faith by Master Builders Solutions. The details are subject to change without notice. Master Builders Solutions accepts no liability for the end use of the details. For conditions not shown, consult Master Builders Solutions for review of specific detail.**

(THIS PAGE INTENTIONALLY LEFT BLANK)

# Platinum CI Stucco Ultra

## TYPICAL FASTENING PATTERN



PCISU-01

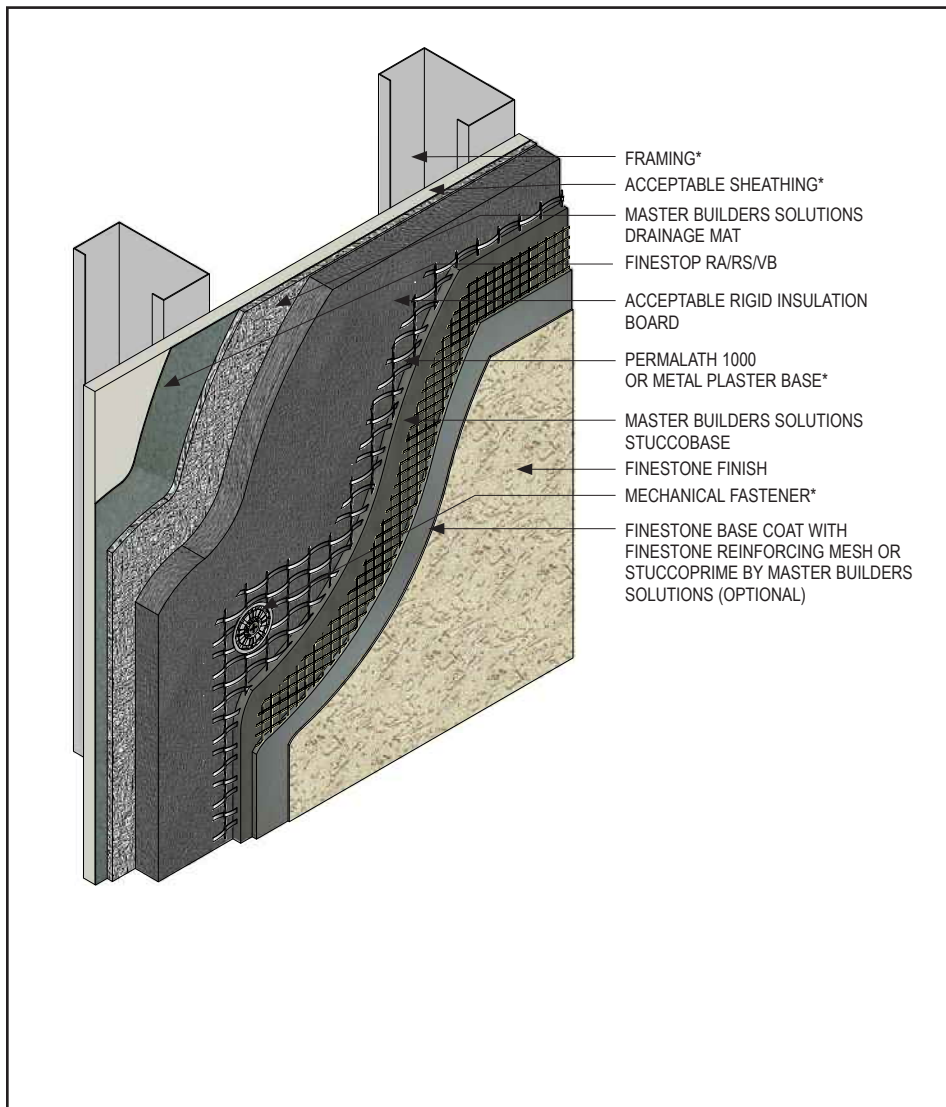
(\*NOTE: BY OTHERS)

- Install Master Builders Solutions materials in accordance with current installation instructions.
- Unsatisfactory conditions shall be reported to the General Contractor and corrected before the application of Master Builders Solutions products.
- Sheathing:  
Fasten per sheathing manufacturer's recommendations or project design requirements.
- Master Builders Solutions Drainage Mat:  
Use sufficient fasteners to hold in place until application of Rigid Insulation Board.
- Rigid Insulation Board:  
Secure with 2 to 3 fasteners per board to hold in place until lath is installed.
- Lath – PermaLath 1000:  
use appropriate fasteners spaced not more than 6" (152 mm) o.c. vertically, 16" (406 mm) o.c. horizontally; metal or wire lath: use appropriate fasteners spaced not more than 7" (178 mm) o.c. vertically, 16" (406 mm) or 24" (610 mm) o.c. horizontally, per requirements of ASTM C1063. Refer to Finestone Platinum CI Stucco Ultra specifications.

This detail represents Master Builders Solutions Construction Systems US, LLC (hereinafter Master Builders Solutions) latest recommendations. It is presented in good faith by Master Builders Solutions. The detail is subject to change without notice. Master Builders Solutions accepts no liability for the end use of the detail. For conditions not shown, consult Master Builders Solutions for review of specific detail.

# Platinum CI Stucco Ultra

## TYPICAL FRAMED/SHEATHED CONSTRUCTION



- Install Master Builders Solutions materials in accordance with current installation instructions.
- Unsatisfactory conditions shall be reported to the General Contractor and corrected before the application of Master Builders Solutions products.
- Ensure Finestop RA/RS/VB is dry prior to Master Builders Solutions Drainage Mat installation.
- Basic requirements for Plaster Base:
  - Master Builders Solutions StuccoBase 3/8" to 1/2" thickness: Min. 1" 20 ga. wire, min. 2.5 lb/sq.yd. metal lath or acceptable alternative.
  - Master Builders Solutions StuccoBase equal to or greater than 1/2" thickness: PermaLath 1000 or min. 1-1/2 17 ga. wire, min. 2.5 lb/sq.yd. metal lath or acceptable alternative.

PCISU-02

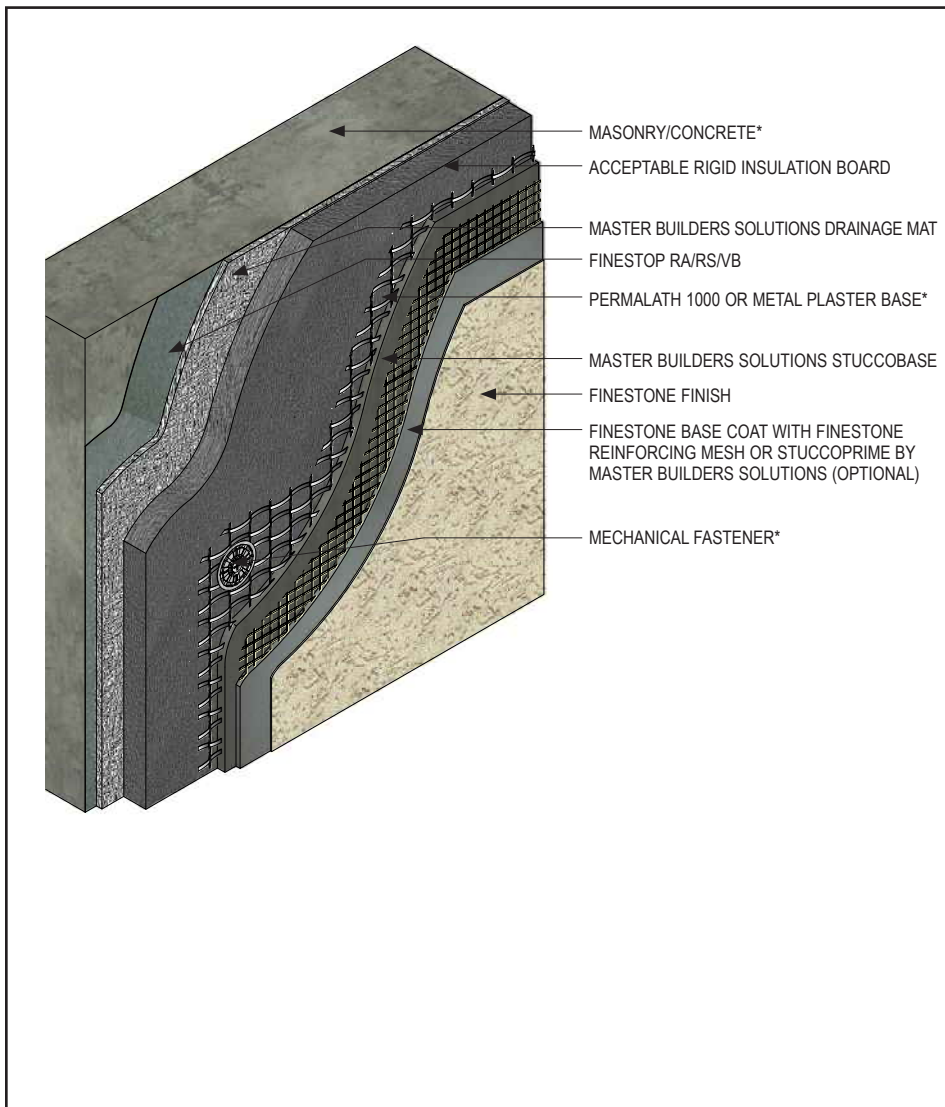
(\*NOTE: BY OTHERS)

This detail represents Master Builders Solutions Construction Systems US, LLC (hereinafter Master Builders Solutions) latest recommendations. It is presented in good faith by Master Builders Solutions. The detail is subject to change without notice. Master Builders Solutions accepts no liability for the end use of the detail. For conditions not shown, consult Master Builders Solutions for review of specific detail.



# Platinum CI Stucco Ultra

## TYPICAL MASONRY/CONCRETE CONSTRUCTION



- Install Master Builders Solutions materials in accordance with current installation instructions.
- Unsatisfactory conditions shall be reported to the General Contractor and corrected before the application of Master Builders Solutions products.
- Multiple coats of Finestop RA/RS/VB may be required to achieve a pin-hole free application.
- Ensure Finestop RA/RS/VB is dry prior to Master Builders Solutions Drainage Mat installation.
- Basic requirements for Plaster Base:
  - Master Builders Solutions StuccoBase 3/8" to 1/2" thickness: Min. 1" 20 ga. wire, min. 2.5 lb/sq.yd. metal lath or acceptable alternative.
  - Master Builders Solutions StuccoBase equal to or greater than 1/2" thickness: PermaLath 1000 or min. 1-1/2" 17 ga. wire, min. 2.5 lb/sq.yd. metal lath or acceptable alternative.

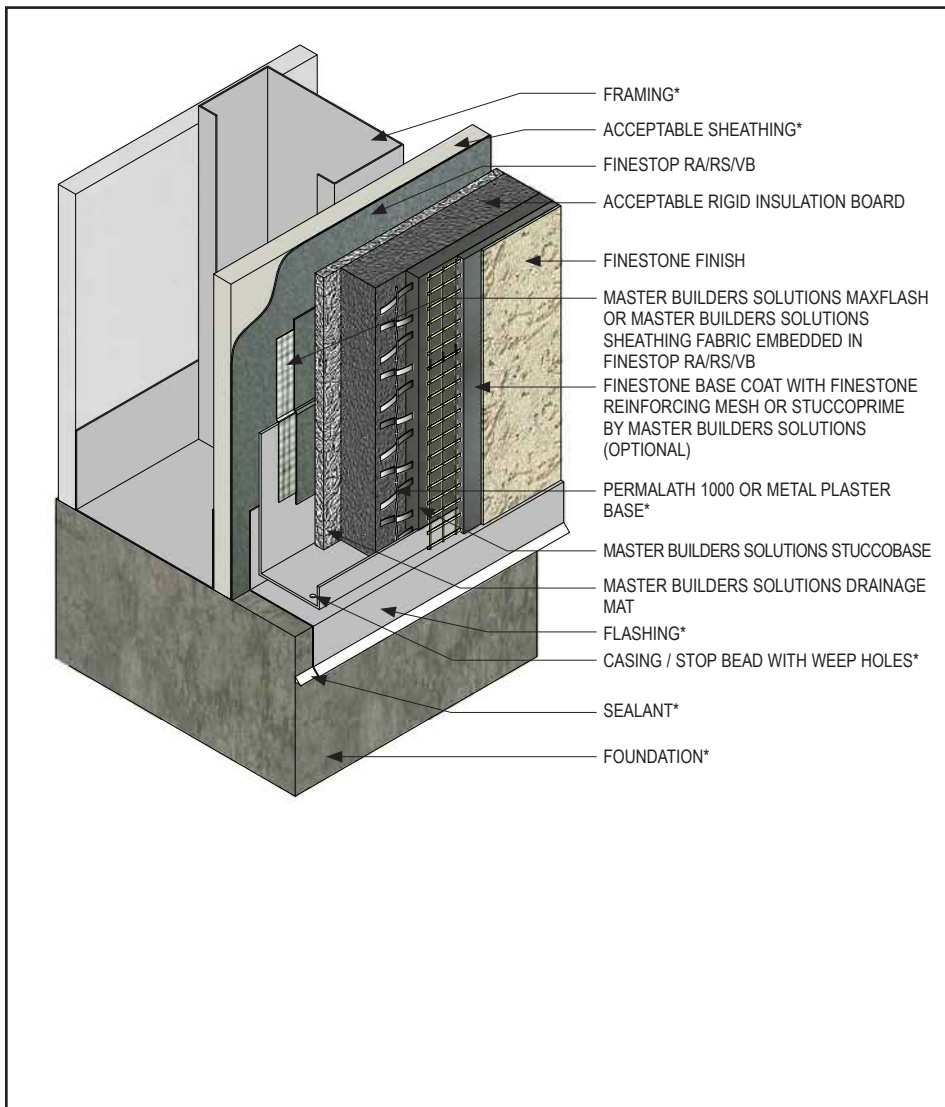
PCISU-03

(\*NOTE: BY OTHERS)

This detail represents Master Builders Solutions Construction Systems US, LLC (hereinafter Master Builders Solutions) latest recommendations. It is presented in good faith by Master Builders Solutions. The detail is subject to change without notice. Master Builders Solutions accepts no liability for the end use of the detail. For conditions not shown, consult Master Builders Solutions for review of specific detail.

# Platinum CI Stucco Ultra

## TYPICAL TERMINATION AT FOUNDATION – FLUSH WITH CASING / STOP BEAD



- Install Master Builders Solutions materials in accordance with current installation instructions.
- Unsatisfactory conditions shall be reported to the General Contractor and corrected before the application of Master Builders Solutions products.
- Terminate the Platinum CI Stucco Ultra system a minimum of 6" (152 mm) above raw earth and 2" (50 mm) above paved surface.
- Use Master Builders Solutions MaxFlash Liquid Flashing Membrane or embed Master Builders Solutions Sheathing Fabric in Finestop RA/RS/VB where it laps over the casing/stop bead flange.
- Ensure casing/stop bead includes weep holes to facilitate drainage.

PCISU-04

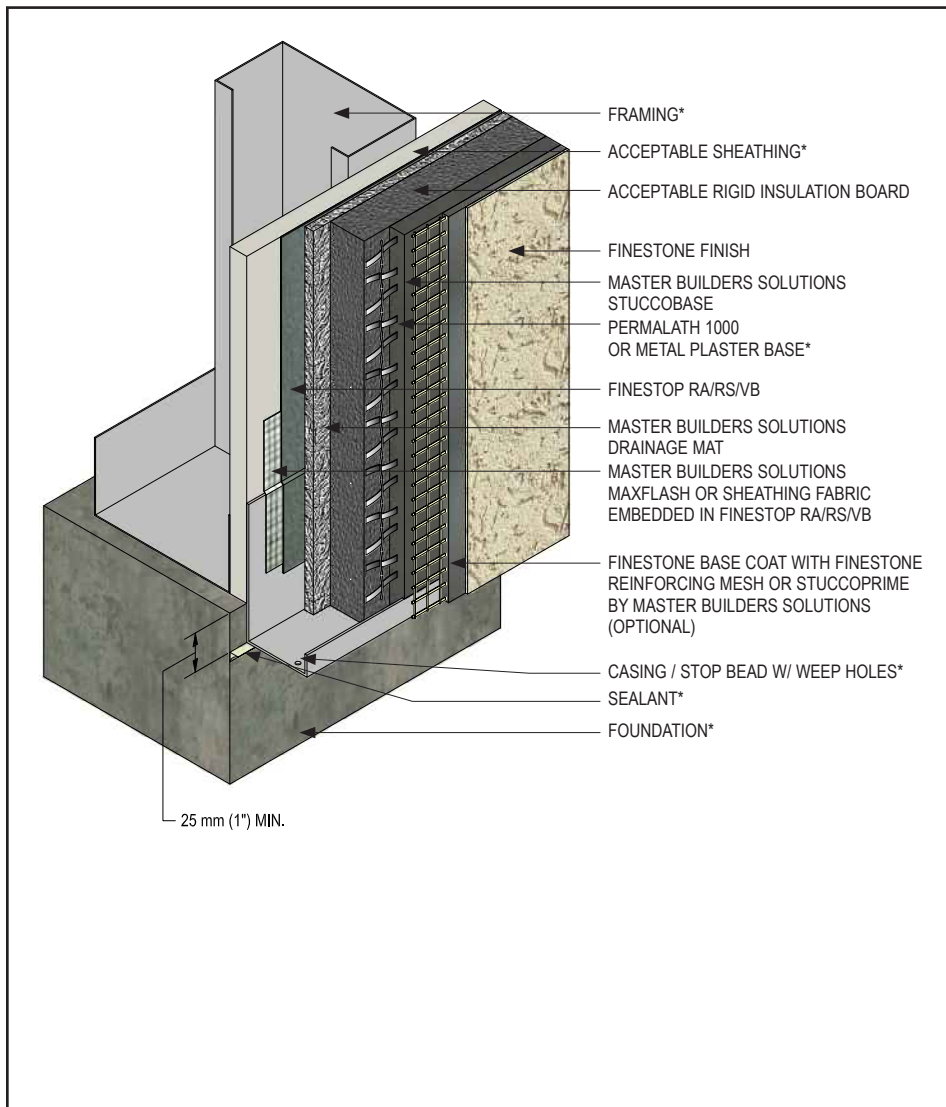
(\*NOTE: BY OTHERS)

This detail represents Master Builders Solutions Construction Systems US, LLC (hereinafter Master Builders Solutions) latest recommendations. It is presented in good faith by Master Builders Solutions. The detail is subject to change without notice. Master Builders Solutions accepts no liability for the end use of the detail. For conditions not shown, consult Master Builders Solutions for review of specific detail.



# Platinum CI Stucco Ultra

## TYPICAL TERMINATION AT FOUNDATION WITH CASING / STOP BEAD



- Install Master Builders Solutions materials in accordance with current installation instructions.
- Unsatisfactory conditions shall be reported to the General Contractor and corrected before the application of Master Builders Solutions products.
- Terminate the Platinum CI Stucco Ultra system a minimum of 6" (152 mm) above raw earth and 2" (50 mm) above paved surface.
- Provide minimum 1" (25 mm) overlap at framing/foundation transition.
- Use Master Builders Solutions maxflash Liquid Flashing Membrane or embed Master Builders Solutions Sheathing Fabric in Finestop RA/RS/VB where it laps over the casing/stop bead flange.
- Ensure casing/stop bead includes weep holes to facilitate drainage.

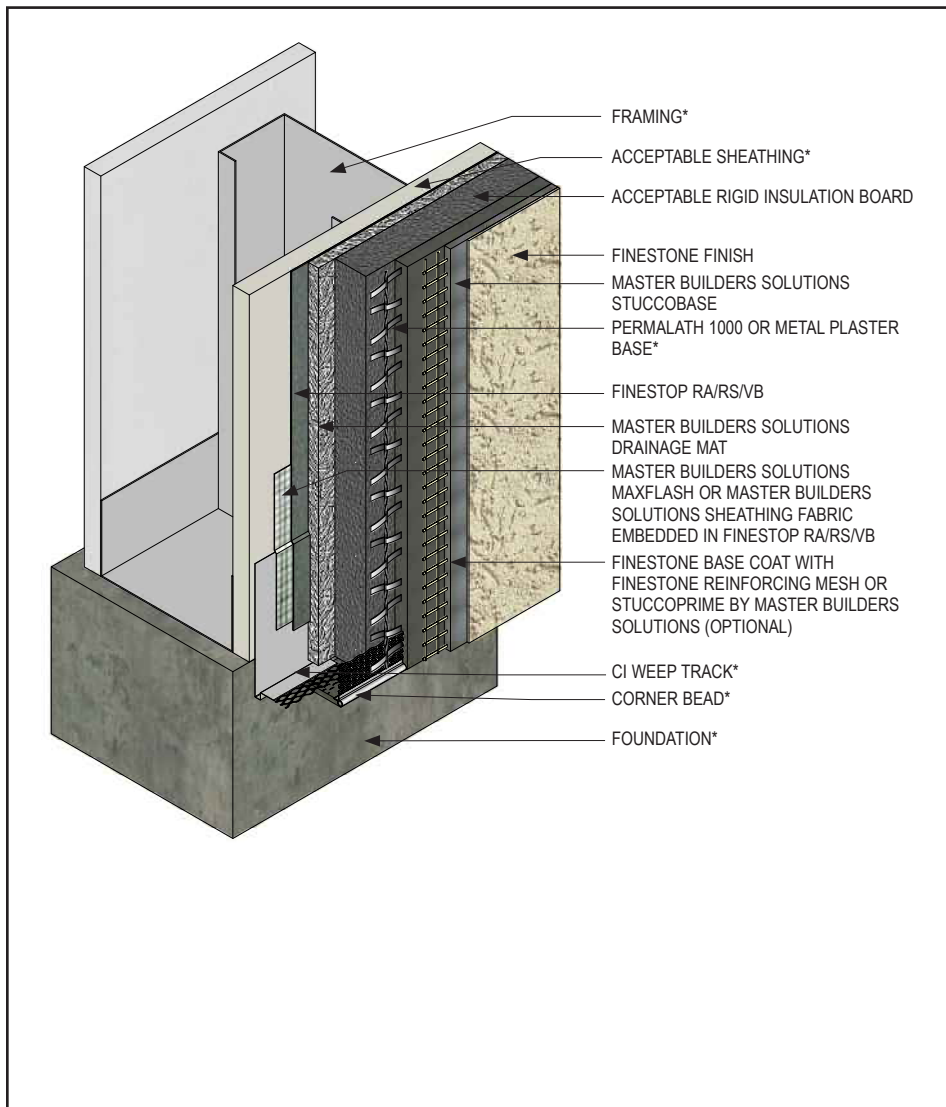
PCISU-05

(\*NOTE: BY OTHERS)

This detail represents Master Builders Solutions Construction Systems US, LLC (hereinafter Master Builders Solutions) latest recommendations. It is presented in good faith by Master Builders Solutions. The detail is subject to change without notice. Master Builders Solutions accepts no liability for the end use of the detail. For conditions not shown, consult Master Builders Solutions for review of specific detail.

# Platinum CI Stucco Ultra

## TYPICAL TERMINATION AT FOUNDATION WITH CI WEEP TRACK



- Install Master Builders Solutions materials in accordance with current installation instructions.
- Unsatisfactory conditions shall be reported to the General Contractor and corrected before the application of Master Builders Solutions products.
- Terminate the Platinum CI Stucco Ultra system a minimum of 6" (152 mm) above raw earth and 2" (50 mm) above paved surface.
- Provide minimum 1" (25 mm) overlap at framing/foundation transition.
- Use Master Builders Solutions MaxFlash Liquid Flashing Membrane or embed Master Builders Solutions Sheathing Fabric in Finestop RA/RS/VB where it laps over the CI Weep Track flange.

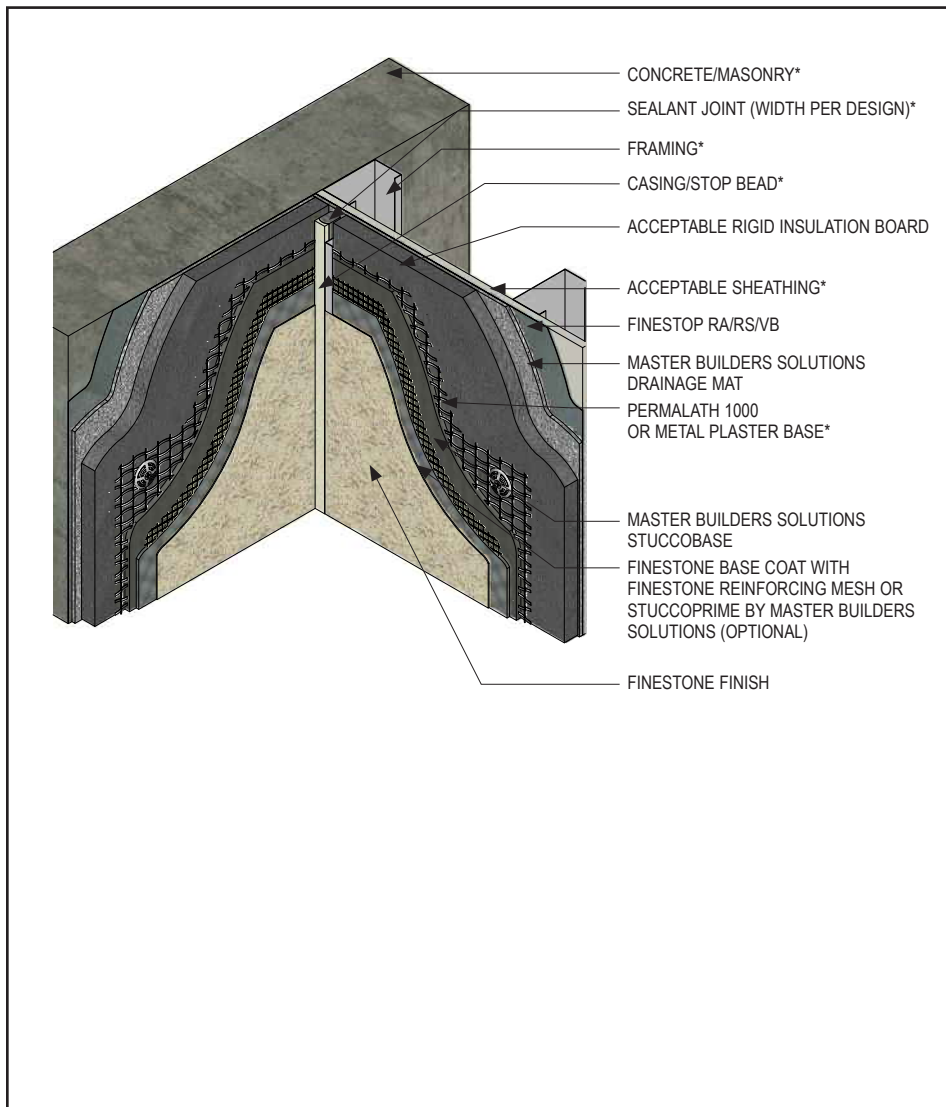
PCISU-06

(\*NOTE: BY OTHERS)

This detail represents Master Builders Solutions Construction Systems US, LLC (hereinafter Master Builders Solutions) latest recommendations. It is presented in good faith by Master Builders Solutions. The detail is subject to change without notice. Master Builders Solutions accepts no liability for the end use of the detail. For conditions not shown, consult Master Builders Solutions for review of specific detail.

# Platinum CI Stucco Ultra

## TYPICAL CHANGE IN SUBSTRATE



- Install Master Builders Solutions materials in accordance with current installation instructions.
- Unsatisfactory conditions shall be reported to the General Contractor and corrected before the application of Master Builders Solutions products.
- Ensure Finestop RA/RS/VB application is continuous behind the Platinum CI Stucco Ultra system at change in substrate – apply Master Builders Solutions WS Flash with Master Builders Solutions Flashing Primer at change in substrate followed by fully coating Master Builders Solutions WS Flash with Finestop RA/RS/VB
- Do not apply finish into joint to receive sealant

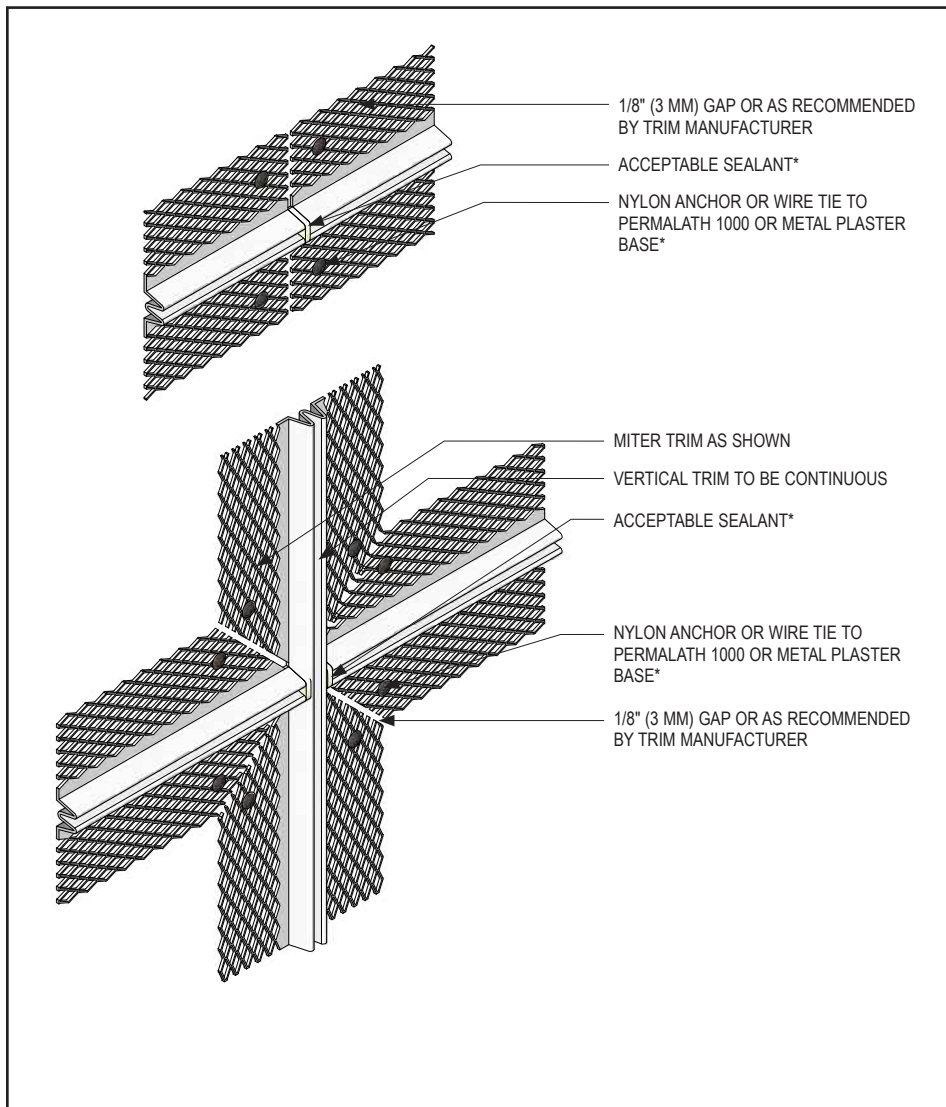
PCISU-07

(\*NOTE: BY OTHERS)

This detail represents Master Builders Solutions Construction Systems US, LLC (hereinafter Master Builders Solutions) latest recommendations. It is presented in good faith by Master Builders Solutions. The detail is subject to change without notice. Master Builders Solutions accepts no liability for the end use of the detail. For conditions not shown, consult Master Builders Solutions for review of specific detail.

# Platinum CI Stucco Ultra

## TYPICAL TRIM JUNCTION



- Install Master Builders Solutions materials in accordance with current installation instructions.
- Unsatisfactory conditions shall be reported to the General Contractor and corrected before the application of Master Builders Solutions products.
- At trim intersection, it is recommended that the vertical trim be continuous.

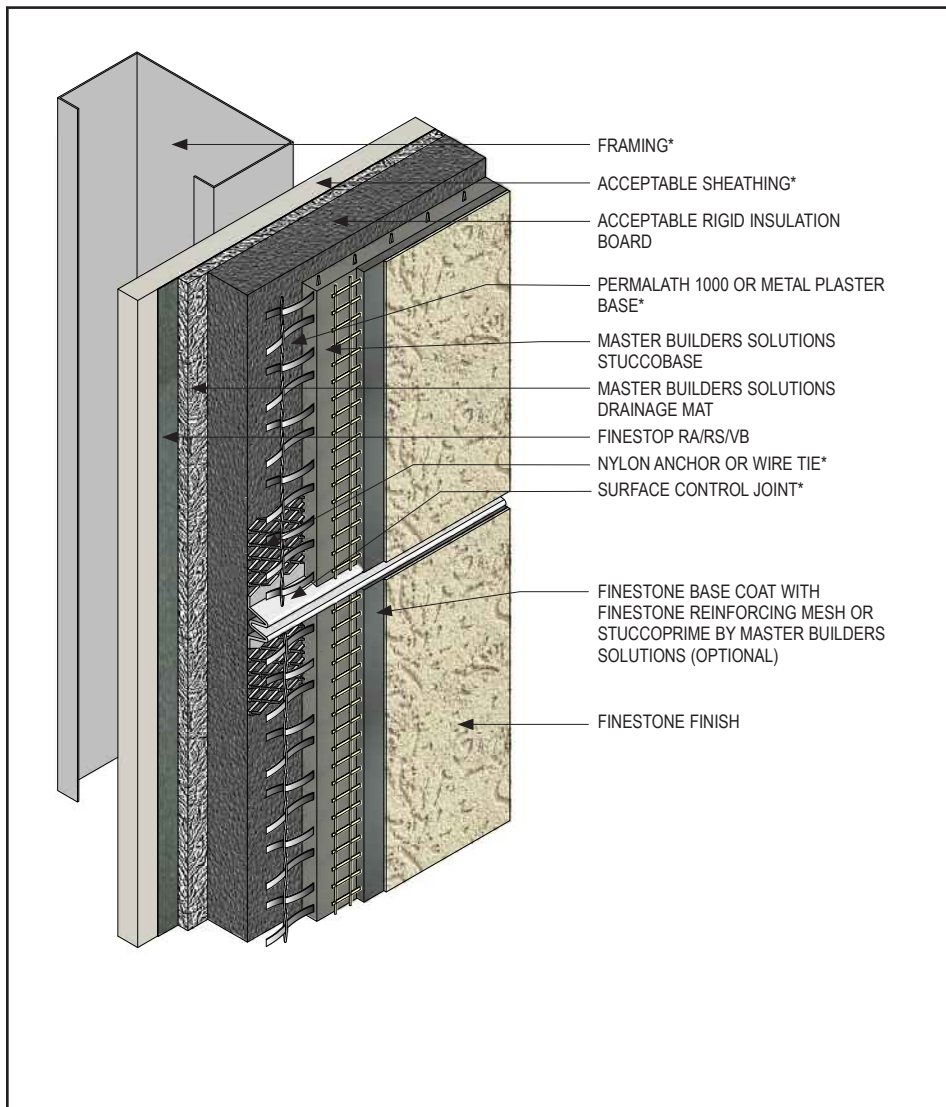
PCISU-08

(\*NOTE: BY OTHERS)

This detail represents Master Builders Solutions Construction Systems US, LLC (hereinafter Master Builders Solutions) latest recommendations. It is presented in good faith by Master Builders Solutions. The detail is subject to change without notice. Master Builders Solutions accepts no liability for the end use of the detail. For conditions not shown, consult Master Builders Solutions for review of specific detail.

# Platinum CI Stucco Ultra

## TYPICAL SURFACE CONTROL JOINT



- Install Master Builders Solutions materials in accordance with current installation instructions.
- Unsatisfactory conditions shall be reported to the General Contractor and corrected before the application of Master Builders Solutions products.
- Provide control joints every 144 ft<sup>2</sup> (13 m<sup>2</sup>) and placement as determined by the design professional. Maximum recommended uncontrolled length or width is 18 ft (5.5 m) and a maximum uncontrolled length to width ratio of 2-1/2 to 1.
- Lath must be broken at the control joint accessory.

PCISU-09

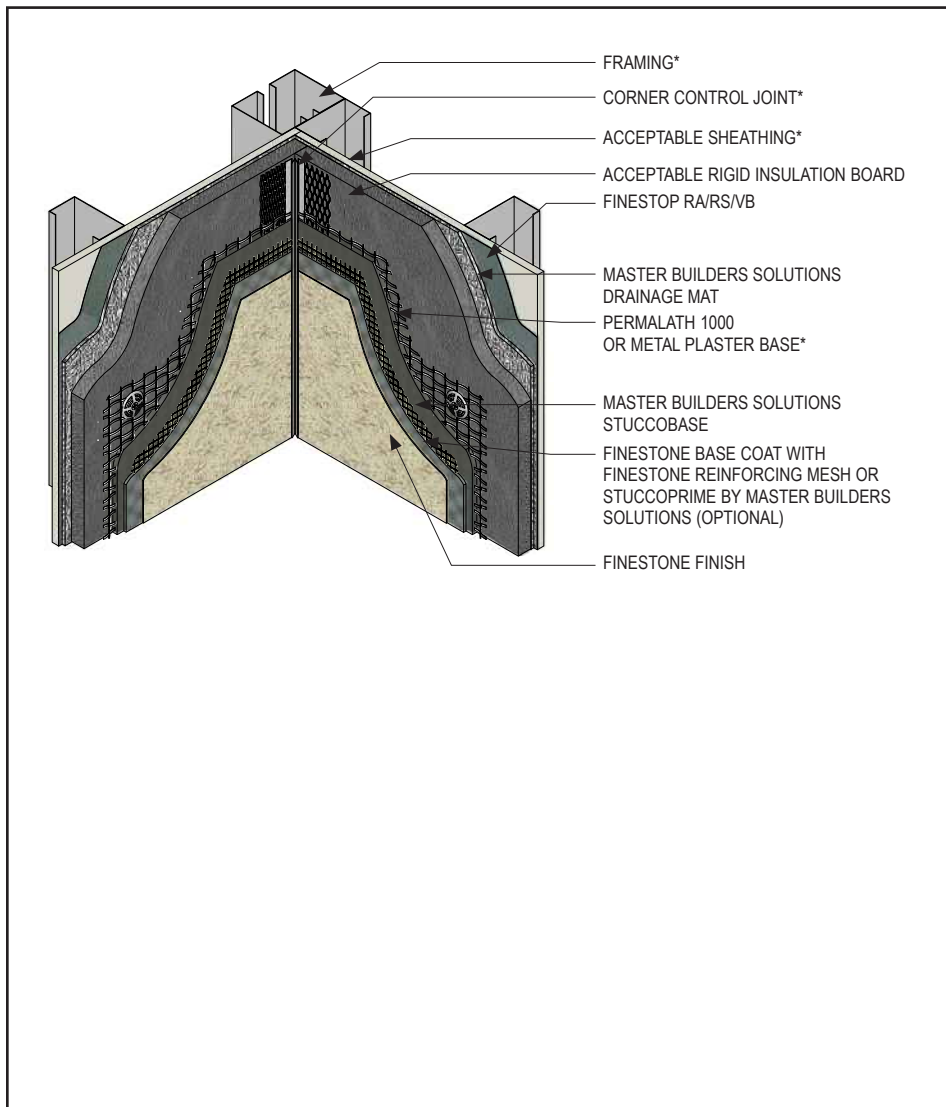
(\*NOTE: BY OTHERS)

This detail represents Master Builders Solutions Construction Systems US, LLC (hereinafter Master Builders Solutions) latest recommendations. It is presented in good faith by Master Builders Solutions. The detail is subject to change without notice. Master Builders Solutions accepts no liability for the end use of the detail. For conditions not shown, consult Master Builders Solutions for review of specific detail.



# Platinum CI Stucco Ultra

## TYPICAL INSIDE CORNER CONTROL JOINT- FRAMED / SHEATHED CONSTRUCTION



- Install Master Builders Solutions materials in accordance with current installation instructions.
- Unsatisfactory conditions shall be reported to the General Contractor and corrected before the application of Master Builders Solutions products.
- Ensure Finestop RA/RS/VB application is continuous behind the Platinum CI Stucco Ultra system – embed Master Builders Solutions MaxFlash Liquid Flashing Membrane or Master Builders Solutions Sheathing Fabric in Finestop RA/RS/VB at inside corner.

PCISU-10

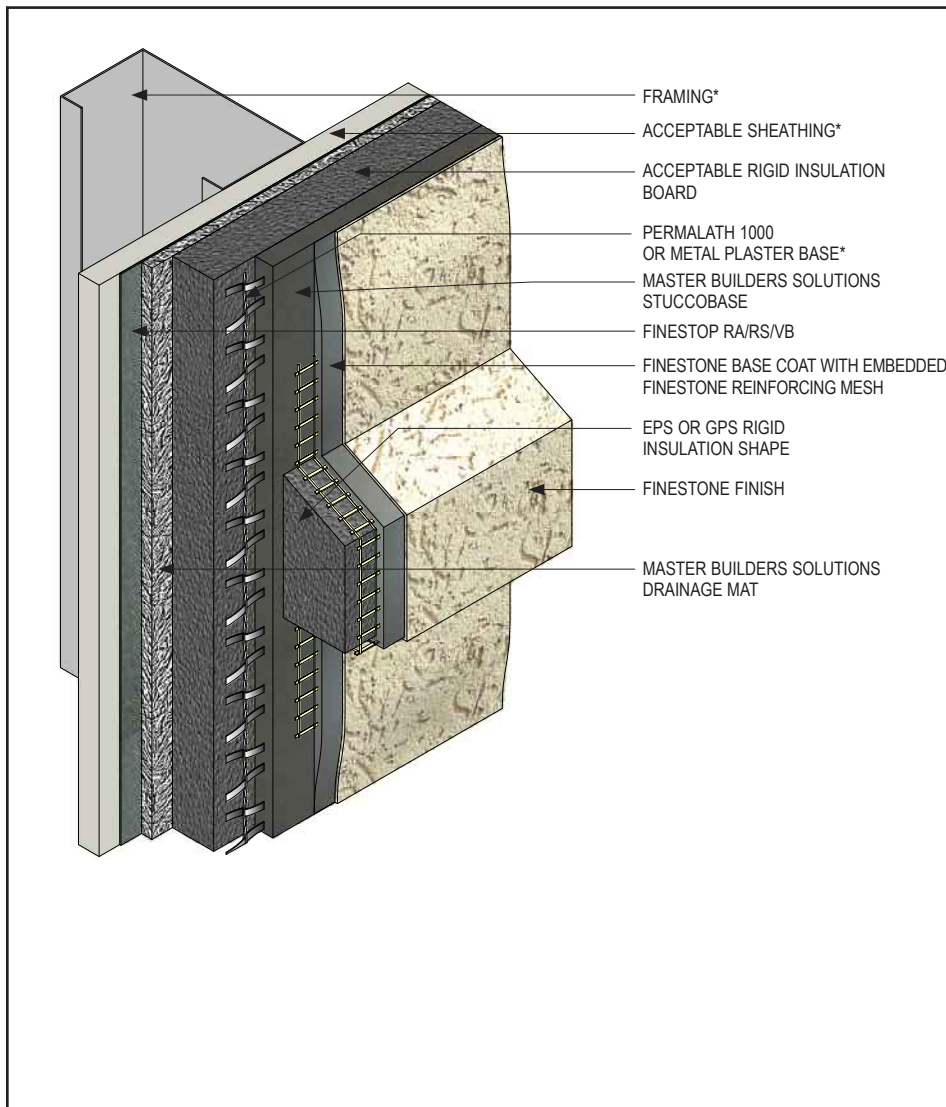
(\*NOTE: BY OTHERS)

This detail represents Master Builders Solutions Construction Systems US, LLC (hereinafter Master Builders Solutions) latest recommendations. It is presented in good faith by Master Builders Solutions. The detail is subject to change without notice. Master Builders Solutions accepts no liability for the end use of the detail. For conditions not shown, consult Master Builders Solutions for review of specific detail.



# Platinum CI Stucco Ultra

## TYPICAL EPS SHAPE APPLICATION



- Install Master Builders Solutions materials in accordance with current installation instructions.
- Unsatisfactory conditions shall be reported to the General Contractor and corrected before the application of Master Builders Solutions products.
- Extend Finestone Standard Reinforcing Mesh and Base Coat from band or shape onto Master Builders Solutions StuccoBase a minimum of 3" (76 mm).
- Provide a 6:12 slope on horizontal applications greater than 1".
- Adhere EPS or GPS Rigid Insulation band/shape with Finestone Base Coat to Master Builders Solutions StuccoBase surface.
- Do not use Master Builders Solutions DiamondShield to reinforce foam shapes. Finestone Standard Mesh must be installed.

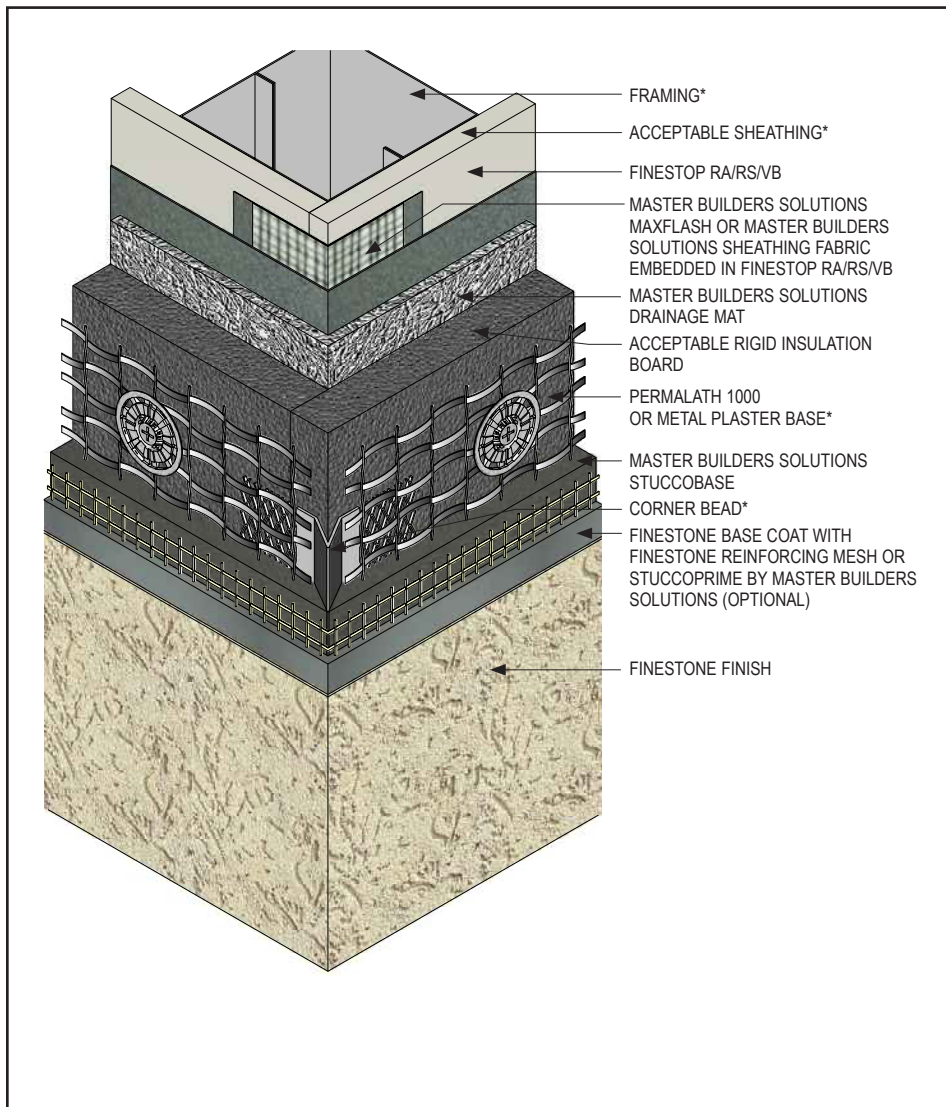
PCISU-11

(\*NOTE: BY OTHERS)

This detail represents Master Builders Solutions Construction Systems US, LLC (hereinafter Master Builders Solutions) latest recommendations. It is presented in good faith by Master Builders Solutions. The detail is subject to change without notice. Master Builders Solutions accepts no liability for the end use of the detail. For conditions not shown, consult Master Builders Solutions for review of specific detail.

# Platinum CI Stucco Ultra

## TYPICAL CORNER BEAD



- Install Master Builders Solutions materials in accordance with current installation instructions.
- Unsatisfactory conditions shall be reported to the General Contractor and corrected before the application of Master Builders Solutions products.
- Attach corner bead with wire ties, anchors or fasteners to resist movement during application of Master Builders Solutions StuccoBase.
- Fill corner bead solid with Master Builders Solutions StuccoBase.

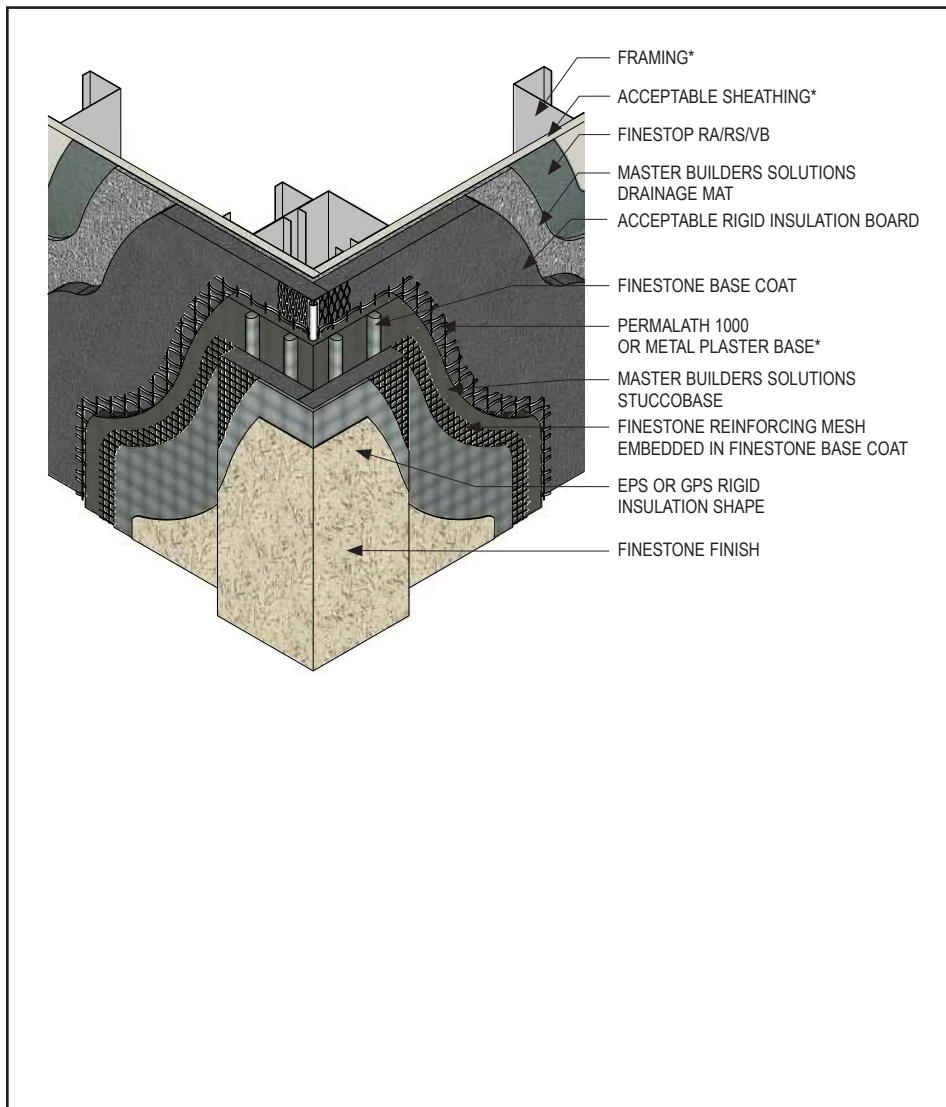
PCISU-12

(\*NOTE: BY OTHERS)

This detail represents Master Builders Solutions Construction Systems US, LLC (hereinafter Master Builders Solutions) latest recommendations. It is presented in good faith by Master Builders Solutions. The detail is subject to change without notice. Master Builders Solutions accepts no liability for the end use of the detail. For conditions not shown, consult Master Builders Solutions for review of specific detail.

# Platinum CI Stucco Ultra

## TYPICAL DECORATIVE SHAPE



- Install Master Builders Solutions materials in accordance with current installation instructions.
- Unsatisfactory conditions shall be reported to the General Contractor and corrected before the application of Master Builders Solutions products.
- Extend Finestone Reinforcing Mesh and Base Coat from band or shape onto Master Builders Solutions StuccoBase a minimum of 3" (76 mm).
- Adhere EPS or GPS Rigid Insulation band/shape with Finestone Base Coat to Master Builders Solutions StuccoBase surface.
- Do not use Master Builders Solutions DiamondShield to reinforce foam shapes. Finestone Standard Mesh must be installed.

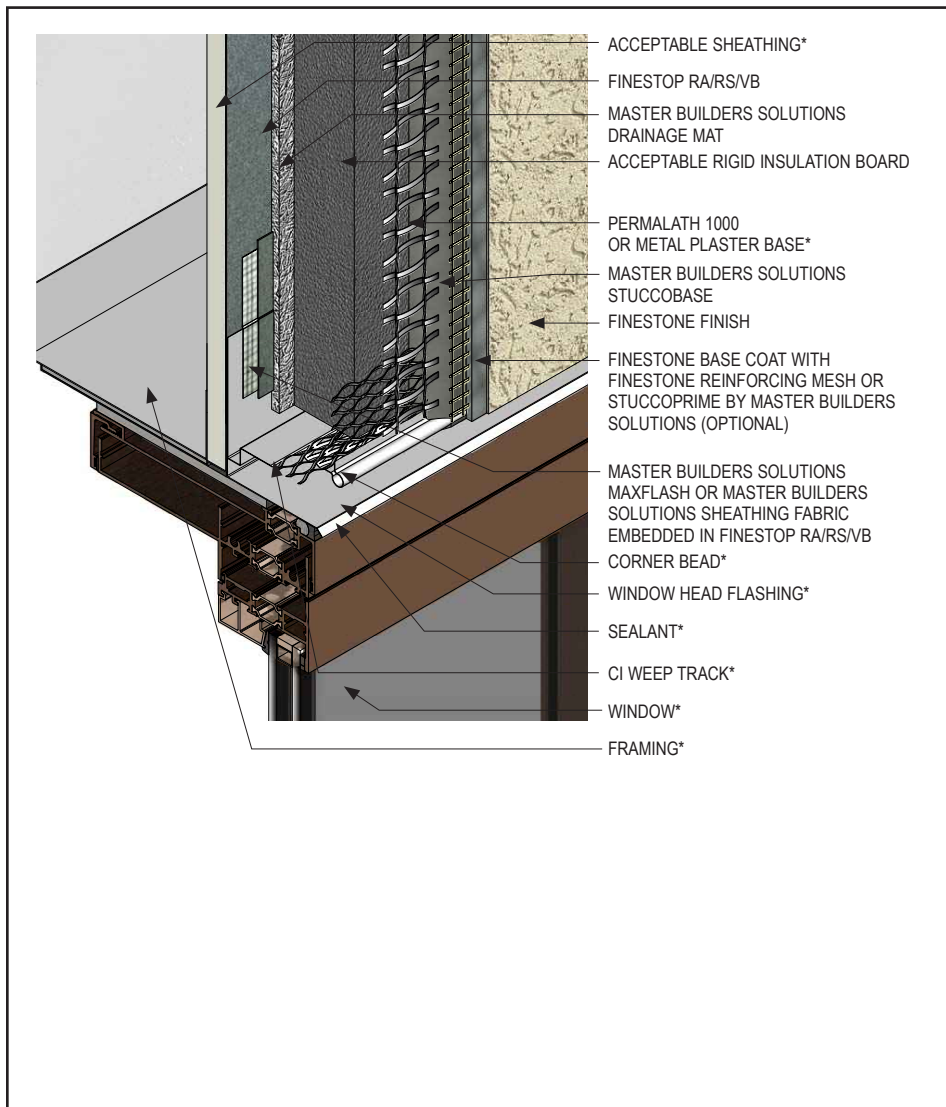
PCISU-13

(\*NOTE: BY OTHERS)

This detail represents Master Builders Solutions Construction Systems US, LLC (hereinafter Master Builders Solutions) latest recommendations. It is presented in good faith by Master Builders Solutions. The detail is subject to change without notice. Master Builders Solutions accepts no liability for the end use of the detail. For conditions not shown, consult Master Builders Solutions for review of specific detail.

# Platinum CI Stucco Ultra

## TYPICAL WINDOW HEAD (FLUSH)



- Install Master Builders Solutions materials in accordance with current installation instructions.
- Unsatisfactory conditions shall be reported to the General Contractor and corrected before the application of Master Builders Solutions products.
- Use Master Builders Solutions MaxFlash Liquid Flashing Membrane or embed Master Builders Solutions Sheathing Fabric in Finestop RA/RS/VB where it laps over the CI Weep Track flange.
- Provide end-dams at flashing terminations.
- Seal flashing drip edge to window frame.
- If Finestop RA/RS/VB is also functioning as an air barrier, ensure head of rough opening is wrapped with Master Builders Solutions MaxFlash Liquid Flashing Membrane or Master Builders Solutions sheathing fabric and Finestop RA/RS/VB.

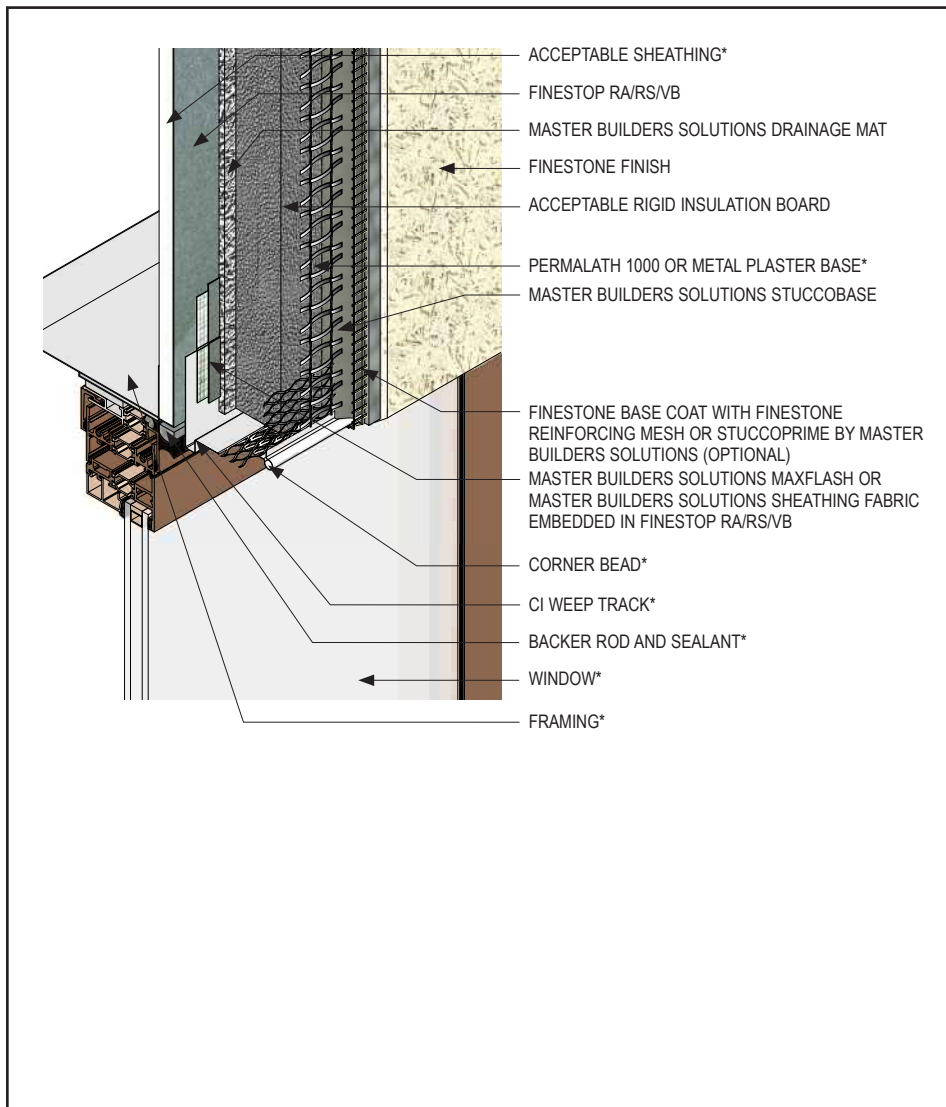
PCISU-14

(\*NOTE: BY OTHERS)

This detail represents Master Builders Solutions Construction Systems US, LLC (hereinafter Master Builders Solutions) latest recommendations. It is presented in good faith by Master Builders Solutions. The detail is subject to change without notice. Master Builders Solutions accepts no liability for the end use of the detail. For conditions not shown, consult Master Builders Solutions for review of specific detail.

# Platinum CI Stucco Ultra

## TYPICAL WINDOW HEAD (RECESSED)



- Install Master Builders Solutions materials in accordance with current installation instructions.
- Unsatisfactory conditions shall be reported to the General Contractor and corrected before the application of Master Builders Solutions products.
- Use Master Builders Solutions MaxFlash Liquid Flashing Membrane or embed Master Builders Solutions Sheathing Fabric in Finestop RA/RS/VB where it laps over the CI Weep Track flange.
- If Finestop RA/RS/VB is also functioning as an air barrier, ensure head of rough opening is wrapped with Master Builders Solutions MaxFlash Liquid Flashing Membrane or Master Builders Solutions sheathing fabric and Finestop RA/RS/VB.

PCISU-15

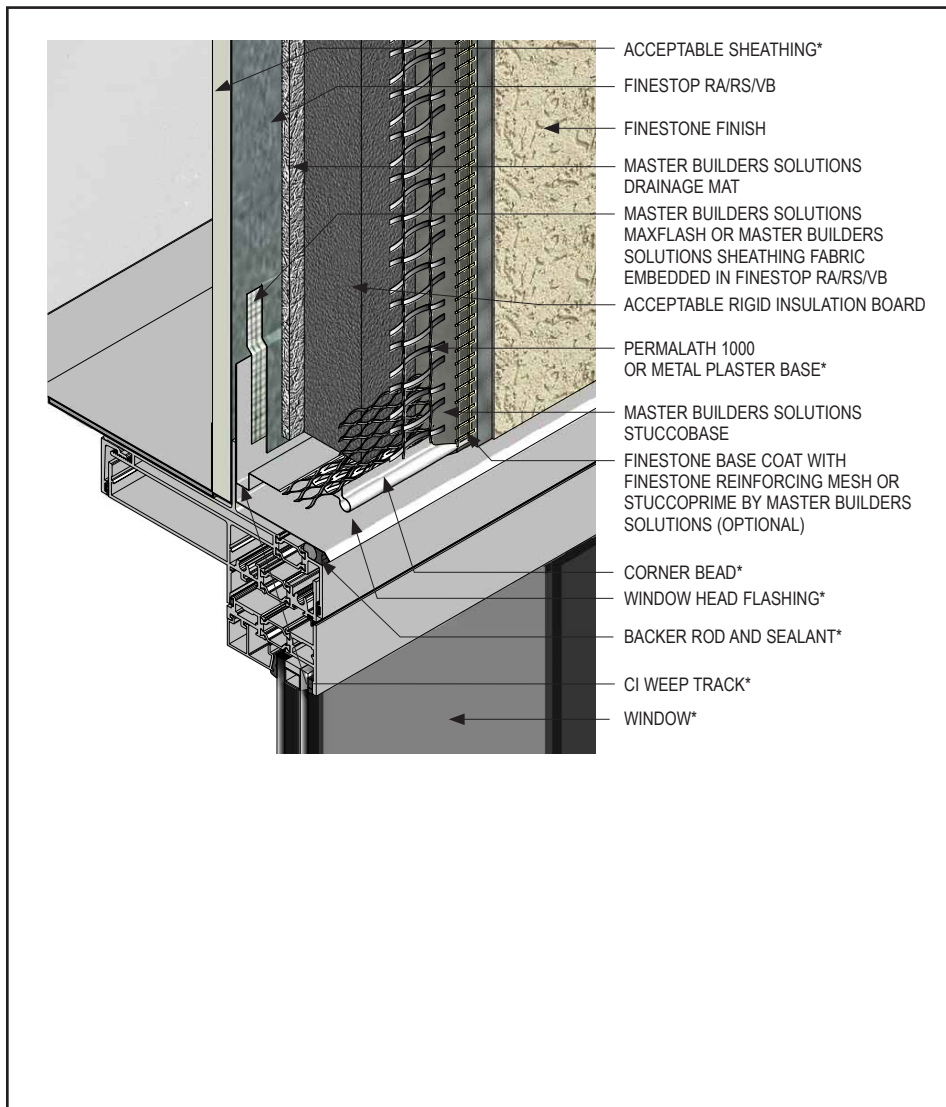
(\*NOTE: BY OTHERS)

This detail represents Master Builders Solutions Construction Systems US, LLC (hereinafter Master Builders Solutions) latest recommendations. It is presented in good faith by Master Builders Solutions. The detail is subject to change without notice. Master Builders Solutions accepts no liability for the end use of the detail. For conditions not shown, consult Master Builders Solutions for review of specific detail.



# Platinum CI Stucco Ultra

## TYPICAL FLANGED WINDOW HEAD



- Install Master Builders Solutions materials in accordance with current installation instructions.
- Unsatisfactory conditions shall be reported to the General Contractor and corrected before the application of Master Builders Solutions products.
- As recommended by window manufacturer, apply sealant to back of window flange at head prior to installation of window.
- Use Master Builders Solutions MaxFlash Liquid Flashing Membrane or embed Master Builders Solutions Sheathing Fabric in Finestop RA/RS/VB where it laps over the CI Weep Track flange.
- Provide end-dams at flashing terminations.
- Seal flashing drip edge to window frame.
- If Finestop RA/RS/VB is also functioning as an air barrier, ensure head of rough opening is wrapped with Master Builders Solutions MaxFlash Liquid Flashing Membrane or Master Builders Solutions sheathing fabric and Finestop RA/RS/VB.

PCISU-16

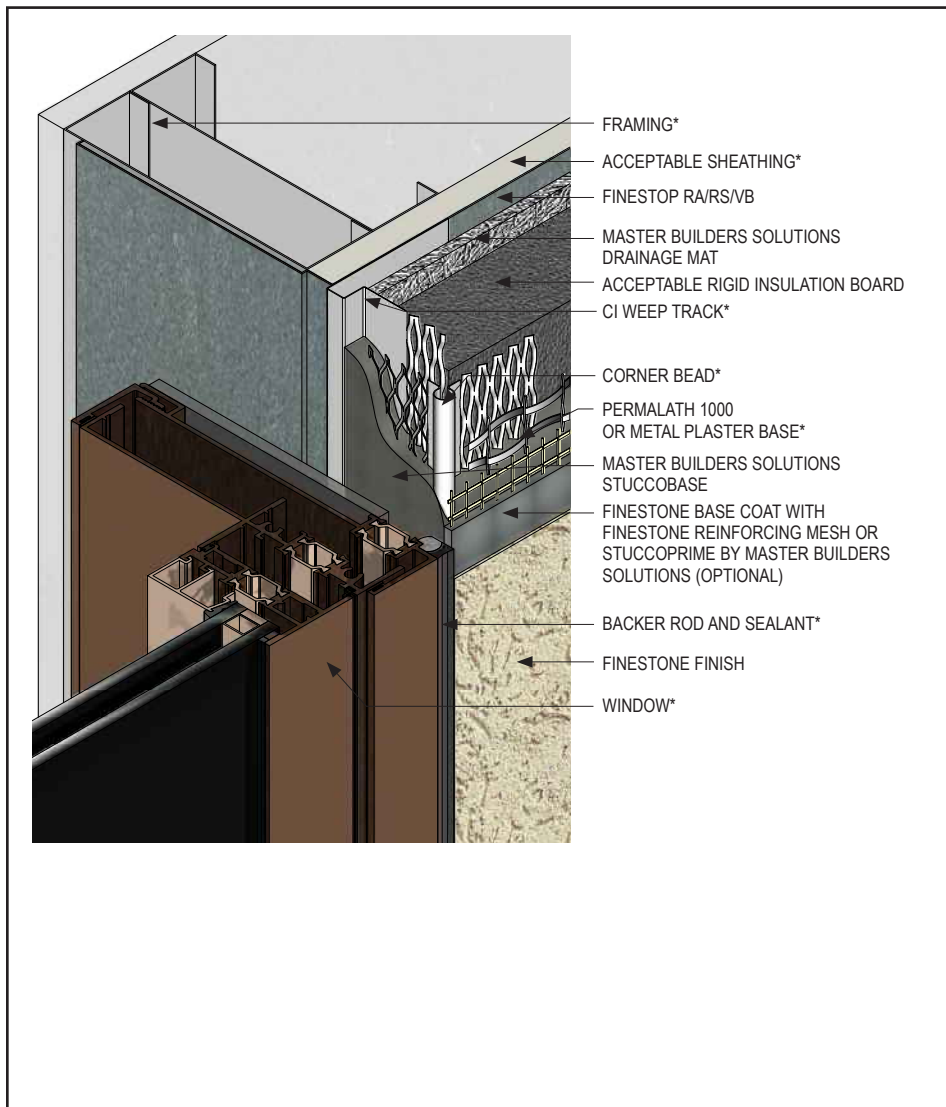
(\*NOTE: BY OTHERS)

This detail represents Master Builders Solutions Construction Systems US, LLC (hereinafter Master Builders Solutions) latest recommendations. It is presented in good faith by Master Builders Solutions. The detail is subject to change without notice. Master Builders Solutions accepts no liability for the end use of the detail. For conditions not shown, consult Master Builders Solutions for review of specific detail.



# Platinum CI Stucco Ultra

## TYPICAL WINDOW JAMB (FLUSH)



- Install Master Builders Solutions materials in accordance with current installation instructions.
- Unsatisfactory conditions shall be reported to the General Contractor and corrected before the application of Master Builders Solutions products.
- Ensure Finestop RA/RS/VB and Master Builders Solutions MaxFlash Liquid Flashing Membrane or Master Builders Solutions Sheathing Fabric are properly applied into rough opening in accordance with application guidelines. Reference Air/Water-Resistive/Vapor Barrier Application Guidelines technical bulletin.
- Do not apply finish into joint to receive sealant.
- Use non-hole punched version of CI Weep Track on jambs.

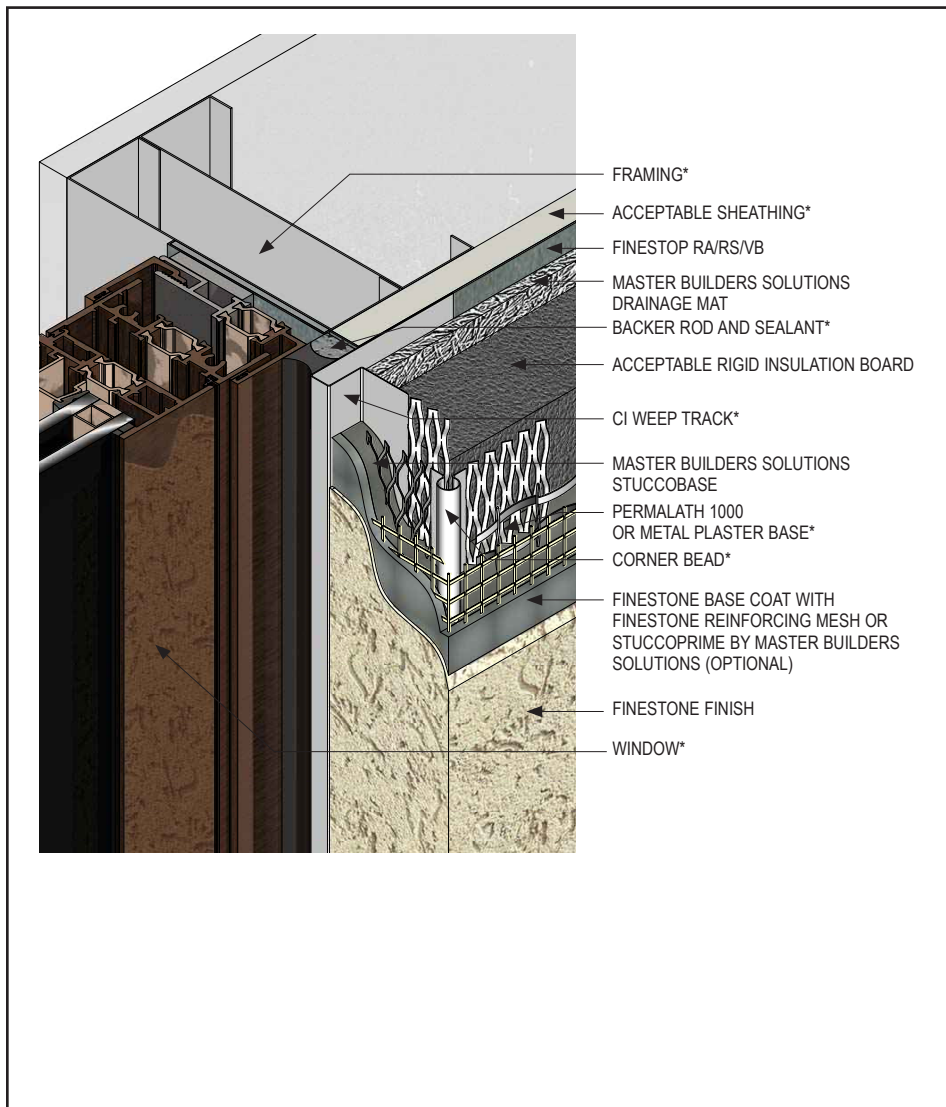
PCISU-17

(\*NOTE: BY OTHERS)

This detail represents Master Builders Solutions Construction Systems US, LLC (hereinafter Master Builders Solutions) latest recommendations. It is presented in good faith by Master Builders Solutions. The detail is subject to change without notice. Master Builders Solutions accepts no liability for the end use of the detail. For conditions not shown, consult Master Builders Solutions for review of specific detail.

# Platinum CI Stucco Ultra

## TYPICAL WINDOW JAMB (RECESSED)



- Install Master Builders Solutions materials in accordance with current installation instructions.
- Unsatisfactory conditions shall be reported to the General Contractor and corrected before the application of Master Builders Solutions products.
- Ensure Finestop RA/RS/VB and Master Builders Solutions MaxFlash Liquid Flashing Membrane or Master Builders Solutions Sheathing Fabric are properly applied into rough opening in accordance with application guidelines. Reference Air/Water-Resistive/Vapor Barrier Application Guidelines technical bulletin.
- Use non-hole punched version of CI Weep Track on jambs.

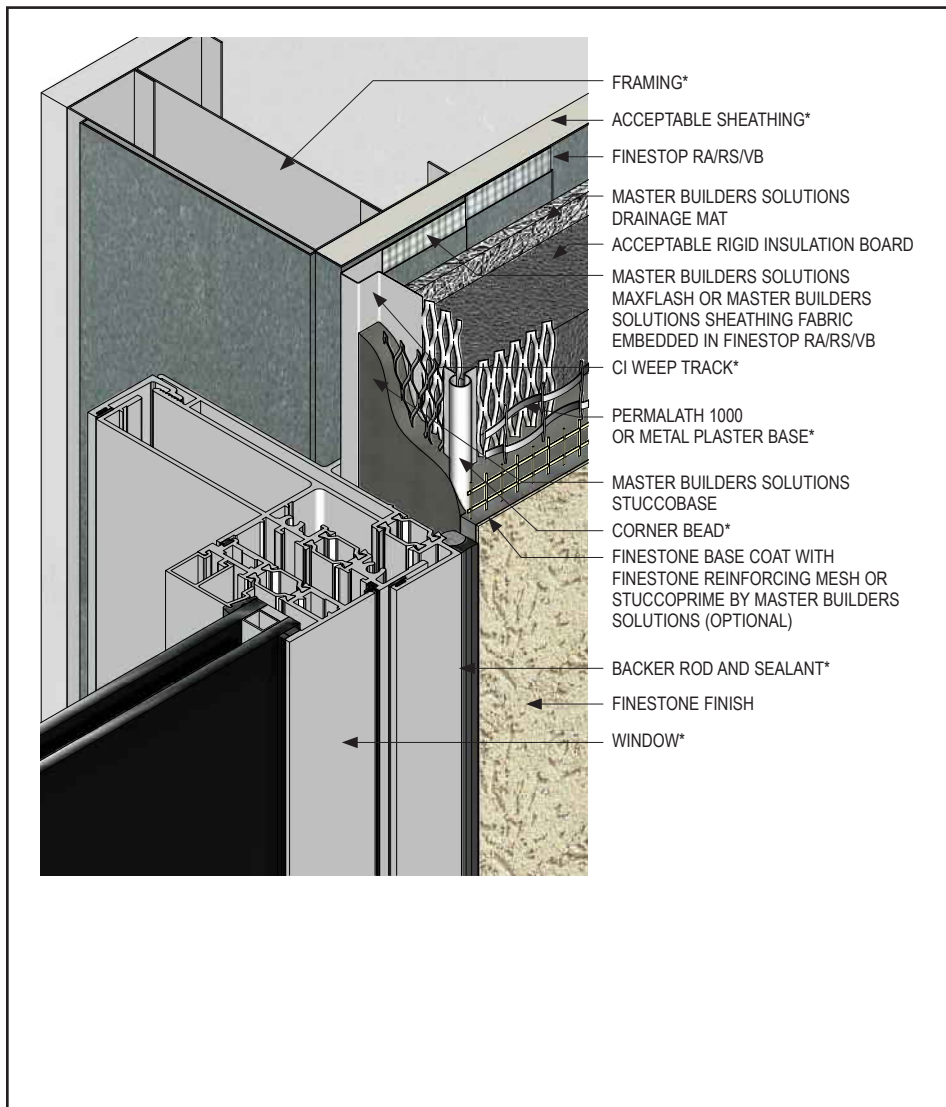
PCISU-18

(\*NOTE: BY OTHERS)

This detail represents Master Builders Solutions Construction Systems US, LLC (hereinafter Master Builders Solutions) latest recommendations. It is presented in good faith by Master Builders Solutions. The detail is subject to change without notice. Master Builders Solutions accepts no liability for the end use of the detail. For conditions not shown, consult Master Builders Solutions for review of specific detail.

# Platinum CI Stucco Ultra

## TYPICAL FLANGED WINDOW JAMB



- Install Master Builders Solutions materials in accordance with current installation instructions.
- Unsatisfactory conditions shall be reported to the General Contractor and corrected before the application of Master Builders Solutions products.
- Ensure Finestop RA/RS/VB and Master Builders Solutions MaxFlash Liquid Flashing Membrane or Master Builders Solutions Sheathing Fabric are properly applied into rough opening in accordance with application guidelines. Reference *Air/Water-Resistive/Vapor Barrier Application Guidelines* technical bulletin.
- As recommended by window manufacturer, apply sealant to back of window flange at jamb prior to installation of window.
- Use non-hole punched version of CI Weep Track on jambs.
- Use Master Builders Solutions MaxFlash Liquid Flashing Membrane or embed Master Builders Solutions Sheathing Fabric in Finestop RA/RS/VB where it overlaps over CI Weep Track flange.

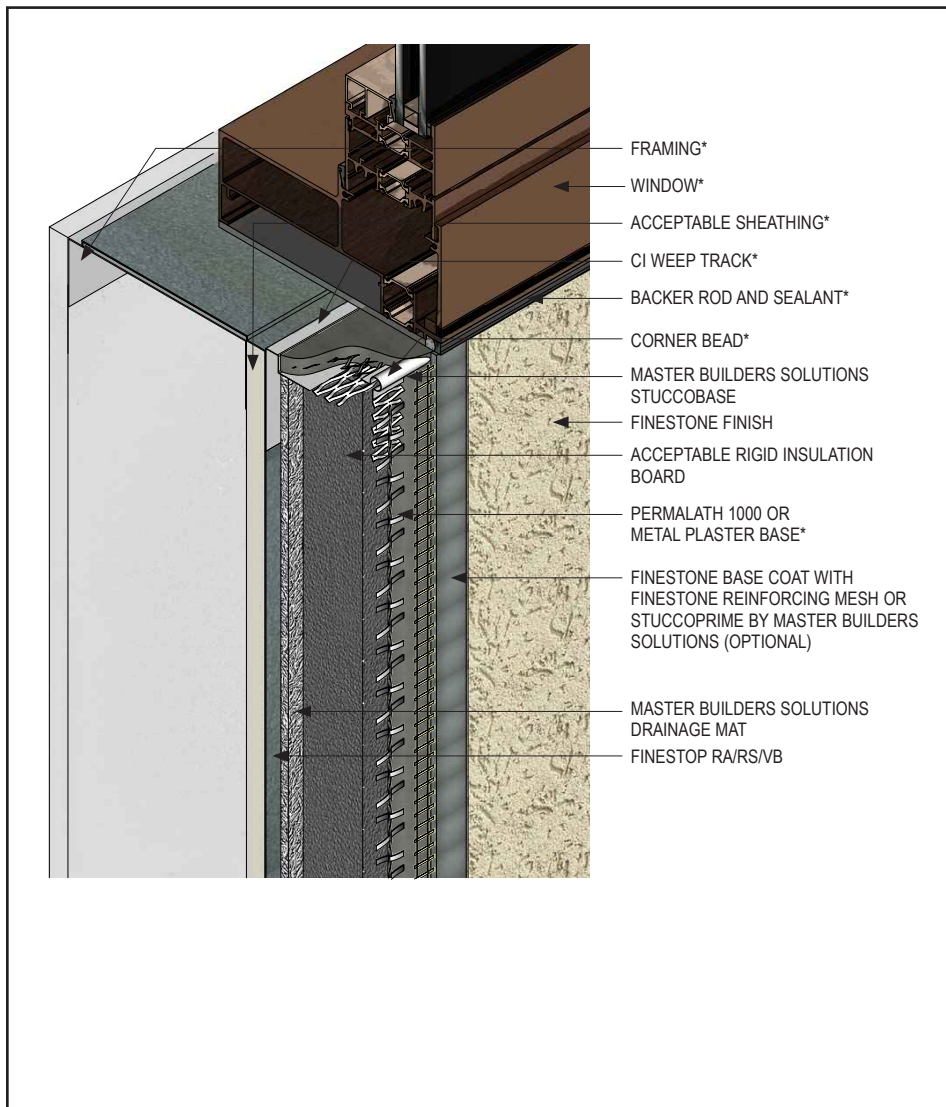
PCISU-19

(\*NOTE: BY OTHERS)

This detail represents Master Builders Solutions Construction Systems US, LLC (hereinafter Master Builders Solutions) latest recommendations. It is presented in good faith by Master Builders Solutions. The detail is subject to change without notice. Master Builders Solutions accepts no liability for the end use of the detail. For conditions not shown, consult Master Builders Solutions for review of specific detail.

# Platinum CI Stucco Ultra

## TYPICAL WINDOW SILL (FLUSH)



- Install Master Builders Solutions materials in accordance with current installation instructions.
- Unsatisfactory conditions shall be reported to the General Contractor and corrected before the application of Master Builders Solutions products.
- Ensure Finestop RA/RS/VB and Master Builders Solutions MaxFlash Liquid Flashing Membrane or Master Builders Solutions Sheathing Fabric are properly applied into rough opening in accordance with application guidelines. Reference Air/Water-Resistive/Vapor Barrier Application Guidelines technical bulletin.
- Do not apply finish into joint to receive sealant.
- Use non-hole punched version of CI Weep Track on sill.

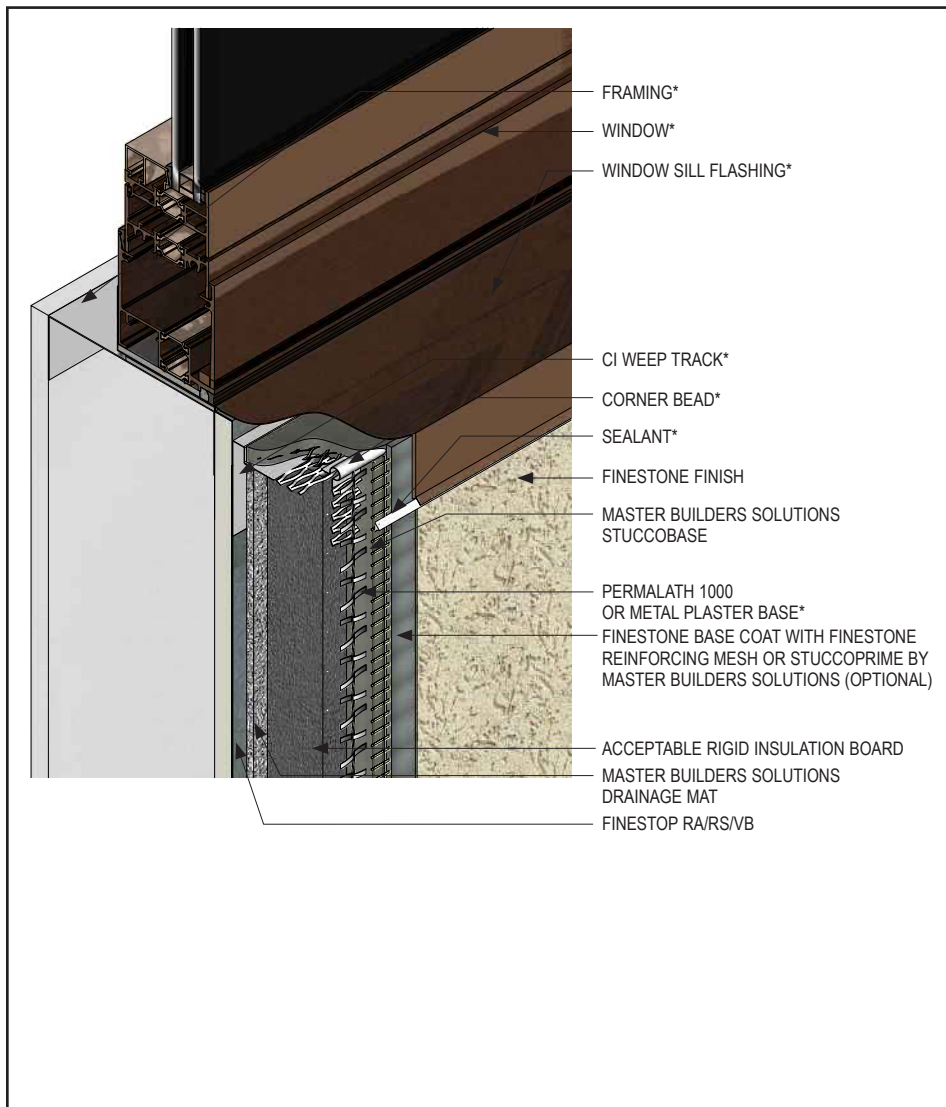
PCISU-20

(\*NOTE: BY OTHERS)

This detail represents Master Builders Solutions Construction Systems US, LLC (hereinafter Master Builders Solutions) latest recommendations. It is presented in good faith by Master Builders Solutions. The detail is subject to change without notice. Master Builders Solutions accepts no liability for the end use of the detail. For conditions not shown, consult Master Builders Solutions for review of specific detail.

# Platinum CI Stucco Ultra

## TYPICAL WINDOW SILL (RECESSED)



- Install Master Builders Solutions materials in accordance with current installation instructions.
- Unsatisfactory conditions shall be reported to the General Contractor and corrected before the application of Master Builders Solutions products.
- Ensure Finestop RA/RS/VB and Master Builders Solutions MaxFlash Liquid Flashing Membrane or Master Builders Solutions Sheathing Fabric are properly applied into rough opening in accordance with application guidelines. Reference Air/Water-Resistive/Vapor Barrier Application Guidelines technical bulletin.
- Use non-hole punched version of CI Weep Track on sill.

PCISU-21

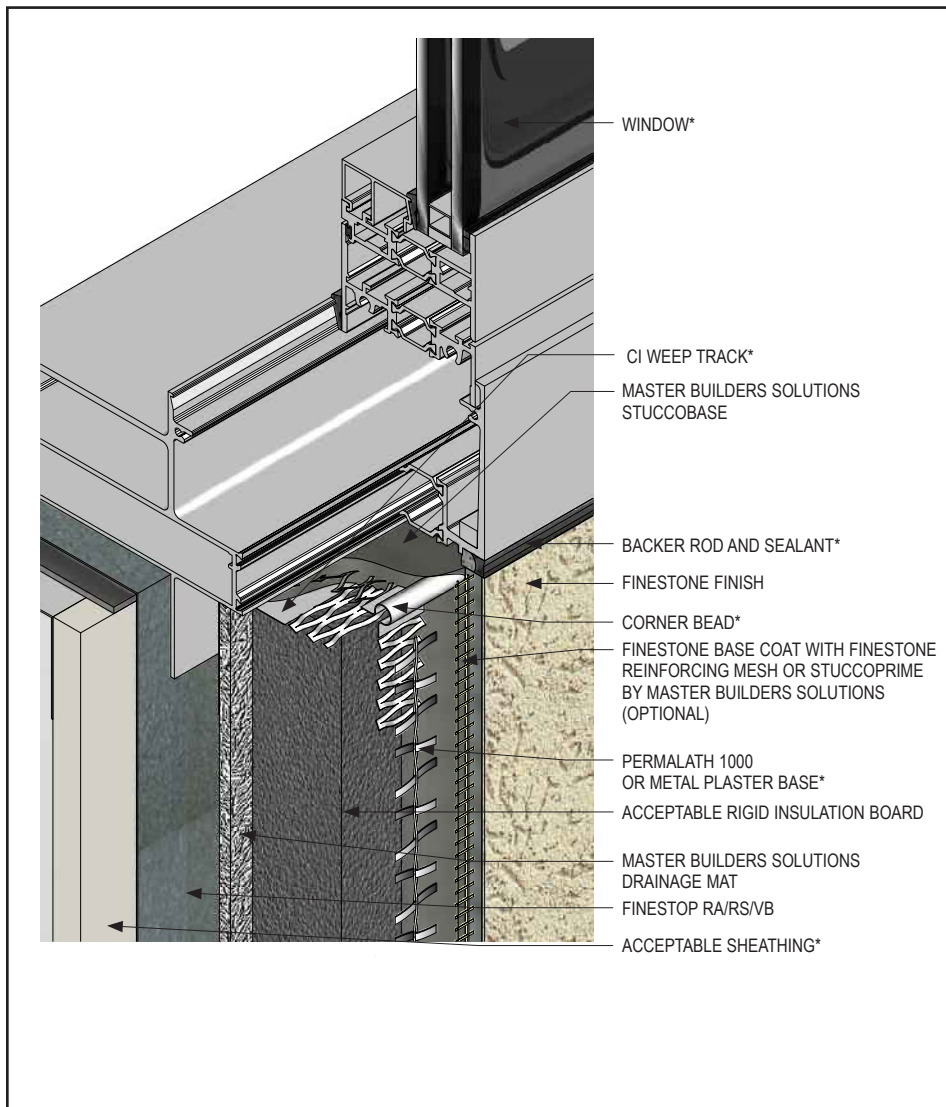
(\*NOTE: BY OTHERS)

This detail represents Master Builders Solutions Construction Systems US, LLC (hereinafter Master Builders Solutions) latest recommendations. It is presented in good faith by Master Builders Solutions. The detail is subject to change without notice. Master Builders Solutions accepts no liability for the end use of the detail. For conditions not shown, consult Master Builders Solutions for review of specific detail.



# Platinum CI Stucco Ultra

## TYPICAL FLANGED WINDOW SILL



- Install Master Builders Solutions materials in accordance with current installation instructions.
- Unsatisfactory conditions shall be reported to the General Contractor and corrected before the application of Master Builders Solutions products.
- Ensure Finestop RA/RS/VB and Master Builders Solutions MaxFlash Liquid Flashing Membrane or Master Builders Solutions Sheathing Fabric are properly applied into rough opening in accordance with application guidelines. Reference *Air/Water-Resistive/Vapor Barrier Application Guidelines* technical bulletin.
- Do not seal window sill flange unless recommended by window manufacturer.
- Use non-hole punched version of CI Weep Track on sill.

PCISU-22

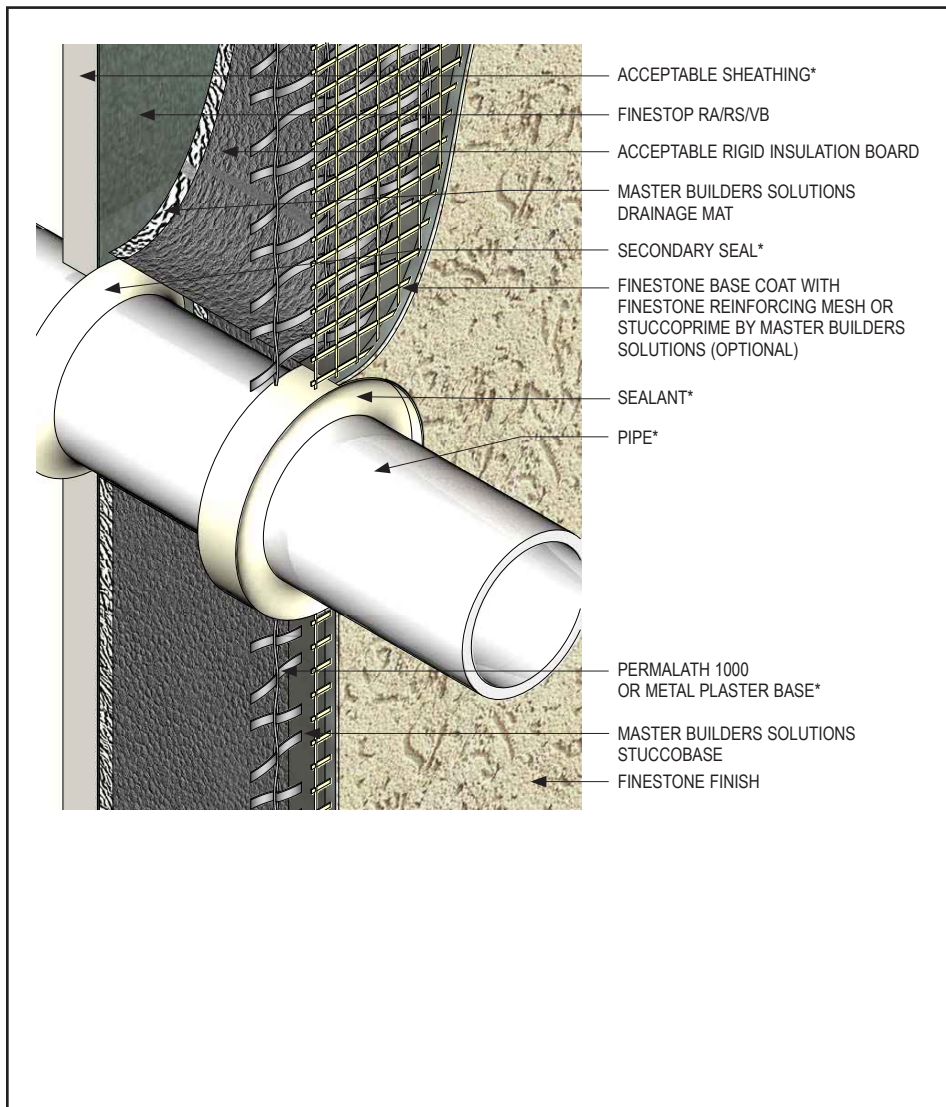
(\*NOTE: BY OTHERS)

This detail represents Master Builders Solutions Construction Systems US, LLC (hereinafter Master Builders Solutions) latest recommendations. It is presented in good faith by Master Builders Solutions. The detail is subject to change without notice. Master Builders Solutions accepts no liability for the end use of the detail. For conditions not shown, consult Master Builders Solutions for review of specific detail.



# Platinum CI Stucco Ultra

## TYPICAL PIPE PENETRATION



- Install Master Builders Solutions materials in accordance with current installation instructions.
- Unsatisfactory conditions shall be reported to the General Contractor and corrected before the application of Master Builders Solutions products.

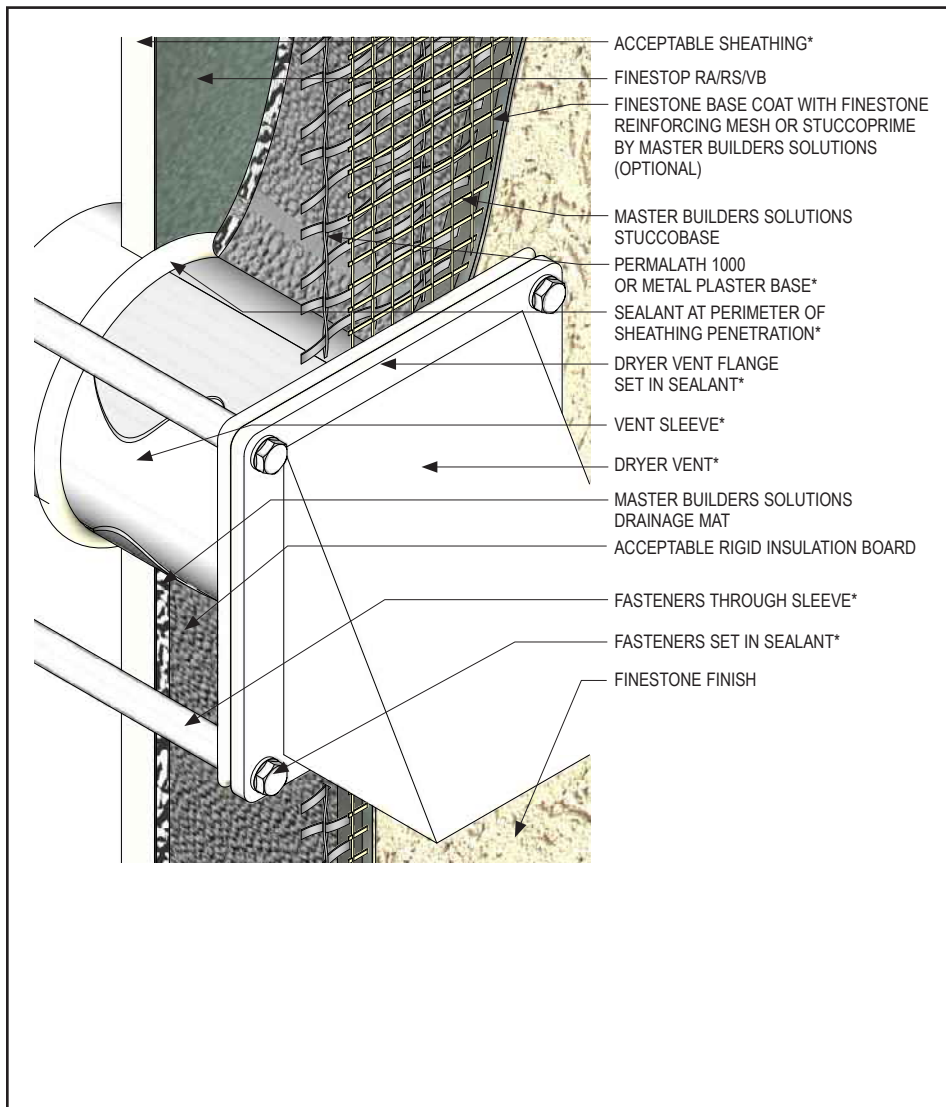
PCISU-23

(\*NOTE: BY OTHERS)

This detail represents Master Builders Solutions Construction Systems US, LLC (hereinafter Master Builders Solutions) latest recommendations. It is presented in good faith by Master Builders Solutions. The detail is subject to change without notice. Master Builders Solutions accepts no liability for the end use of the detail. For conditions not shown, consult Master Builders Solutions for review of specific detail.

# Platinum CI Stucco Ultra

## TYPICAL DRYER VENT



- Install Master Builders Solutions materials in accordance with current installation instructions.
- Unsatisfactory conditions shall be reported to the General Contractor and corrected before the application of Master Builders Solutions products.
- Finestop RA/RS/VB with Master Builders Solutions MaxFlash Liquid Sheathing Fabric or Sheathing Fabric or WS Flash with Flashing Primer can be applied from sheathing onto pipe in lieu of the secondary seal.
- Ensure all fastener penetrations through the Platinum CI Stucco Ultra system are properly sealed.

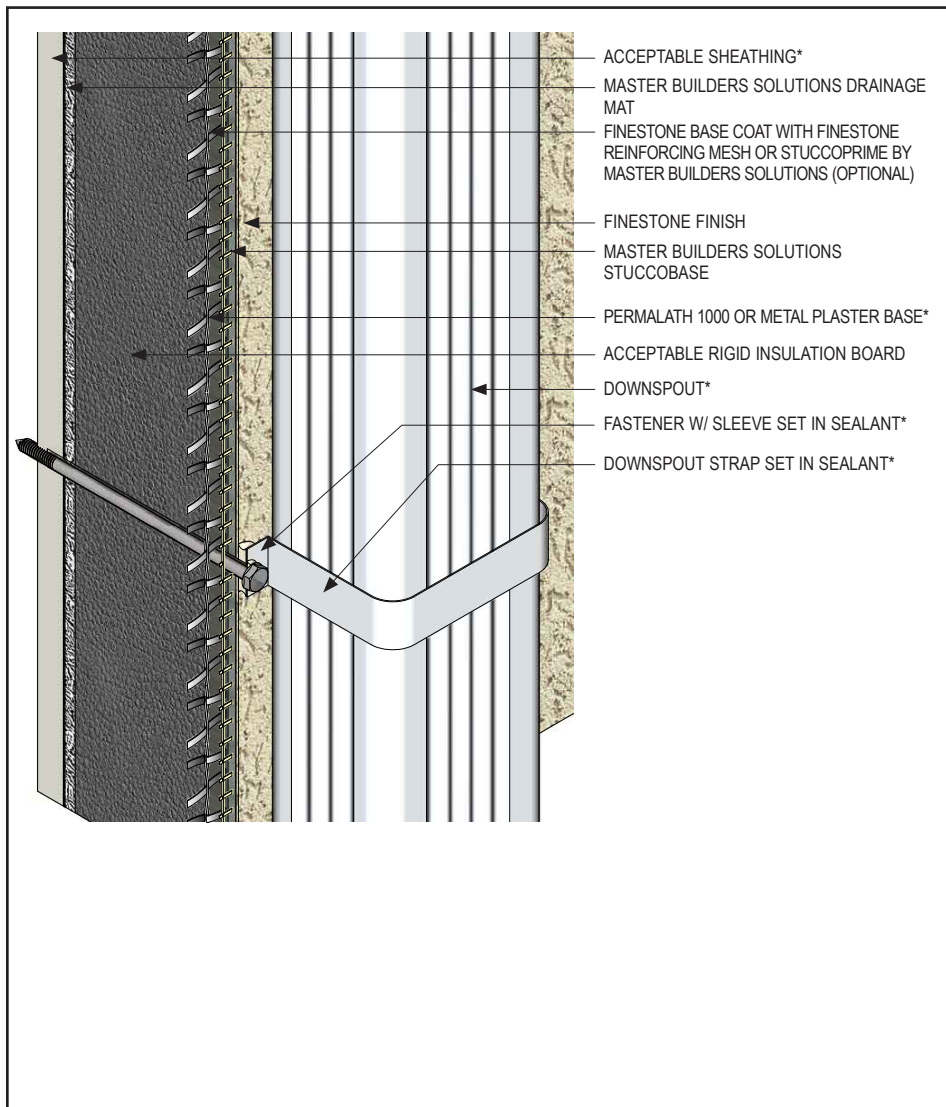
PCISU-24

(\*NOTE: BY OTHERS)

This detail represents Master Builders Solutions Construction Systems US, LLC (hereinafter Master Builders Solutions) latest recommendations. It is presented in good faith by Master Builders Solutions. The detail is subject to change without notice. Master Builders Solutions accepts no liability for the end use of the detail. For conditions not shown, consult Master Builders Solutions for review of specific detail.

# Platinum CI Stucco Ultra

## TYPICAL DOWNSPOUT



- Install Master Builders Solutions materials in accordance with current installation instructions.
- Unsatisfactory conditions shall be reported to the General Contractor and corrected before the application of Master Builders Solutions products.
- Ensure all fastener penetrations through the Platinum CI Stucco Ultra system are properly sealed.

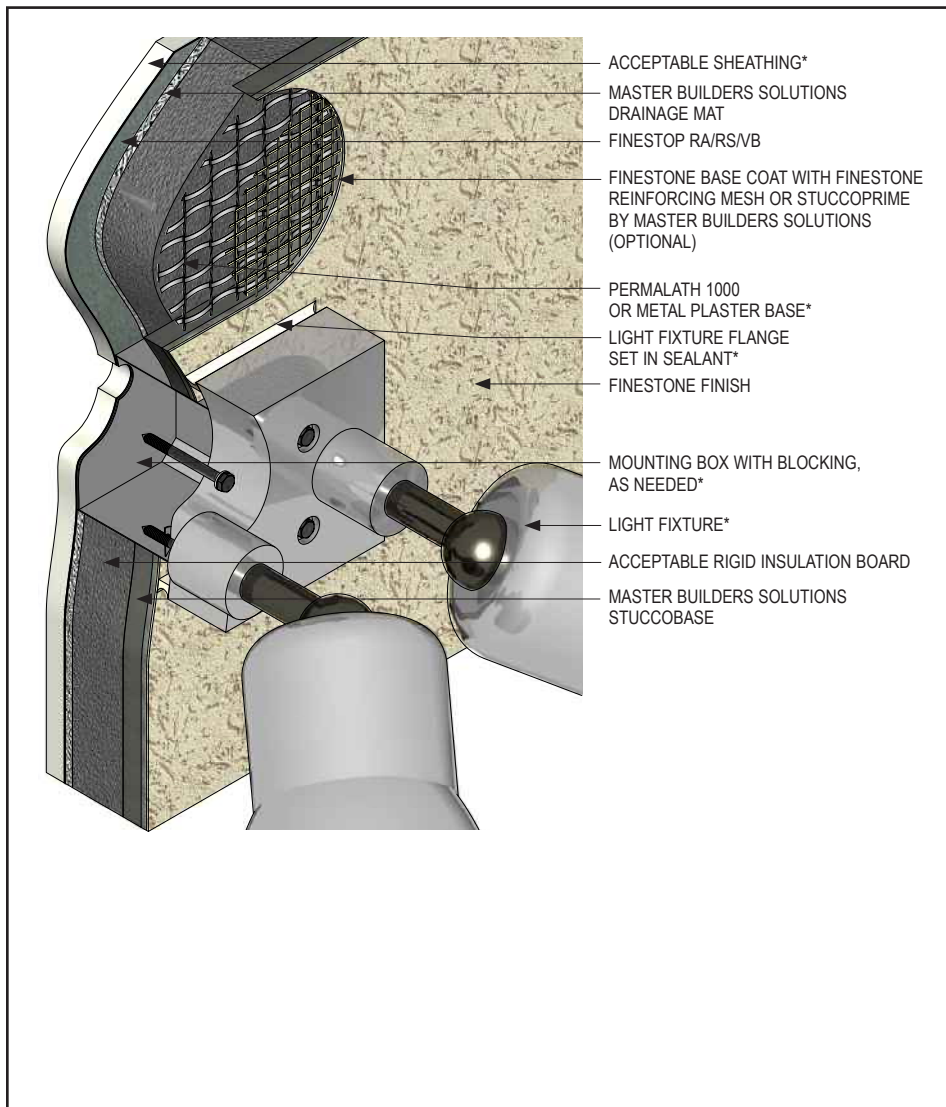
PCISU-25

(\*NOTE: BY OTHERS)

This detail represents Master Builders Solutions Construction Systems US, LLC (hereinafter Master Builders Solutions) latest recommendations. It is presented in good faith by Master Builders Solutions. The detail is subject to change without notice. Master Builders Solutions accepts no liability for the end use of the detail. For conditions not shown, consult Master Builders Solutions for review of specific detail.

# Platinum CI Stucco Ultra

## TYPICAL LIGHT FIXTURE



- Install Master Builders Solutions materials in accordance with current installation instructions.
- Unsatisfactory conditions shall be reported to the General Contractor and corrected before the application of Master Builders Solutions products.
- Ensure all fastener penetrations through the Platinum CI Stucco Ultra system are properly sealed.

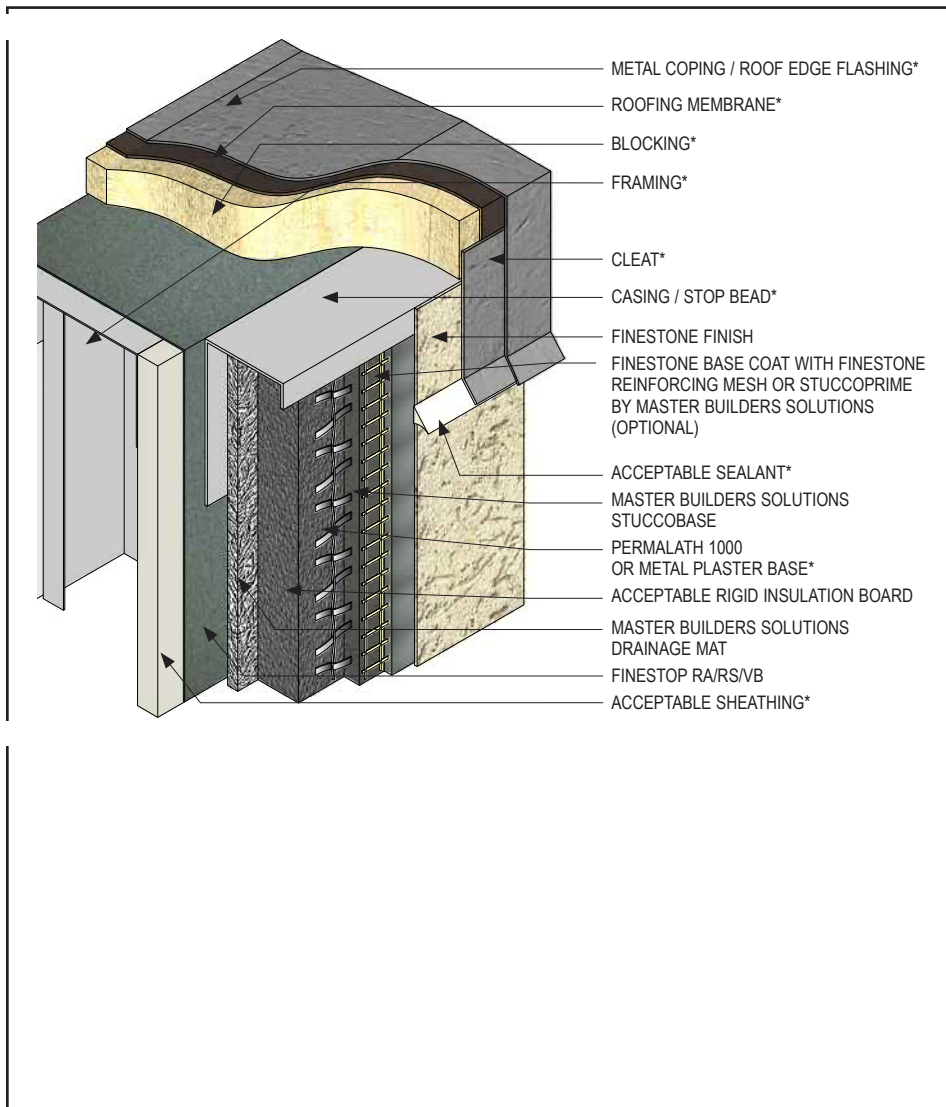
PCISU-26

(\*NOTE: BY OTHERS)

This detail represents Master Builders Solutions Construction Systems US, LLC (hereinafter Master Builders Solutions) latest recommendations. It is presented in good faith by Master Builders Solutions. The detail is subject to change without notice. Master Builders Solutions accepts no liability for the end use of the detail. For conditions not shown, consult Master Builders Solutions for review of specific detail.

# Platinum CI Stucco Ultra

## TYPICAL TERMINATION AT METAL COPING / ROOF EDGE FLASHING – OPTION 01



- Install Master Builders Solutions materials in accordance with current installation instructions.
- Unsatisfactory conditions shall be reported to the General Contractor and corrected before the application of Master Builders Solutions products.
- It is recommended to lap coping or roof edge flashing over the Platinum CI Stucco Ultra system a minimum of 2" (50 mm) with drip edge sealed.

PCISU-27

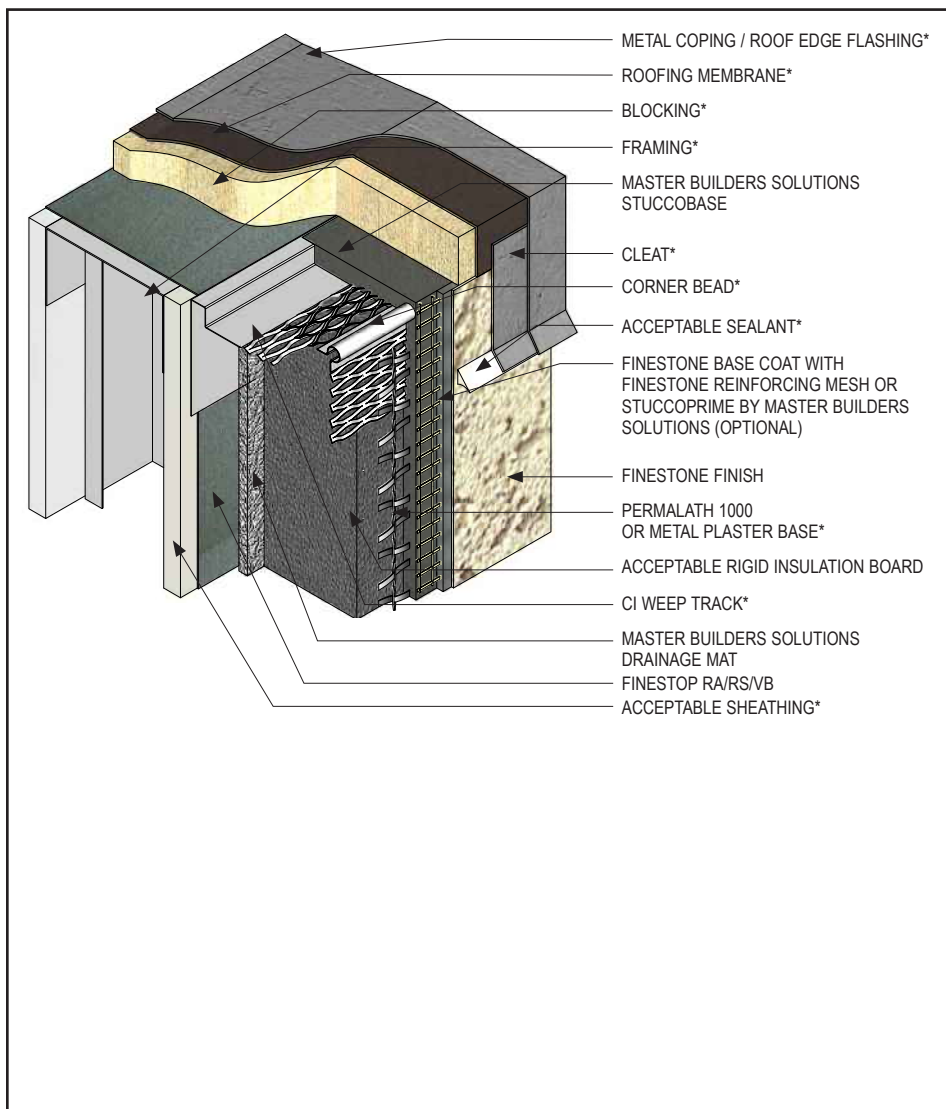
(\*NOTE: BY OTHERS)

This detail represents Master Builders Solutions Construction Systems US, LLC (hereinafter Master Builders Solutions) latest recommendations. It is presented in good faith by Master Builders Solutions. The detail is subject to change without notice. Master Builders Solutions accepts no liability for the end use of the detail. For conditions not shown, consult Master Builders Solutions for review of specific detail.



# Platinum CI Stucco Ultra

## TYPICAL TERMINATION AT METAL COPING / ROOF EDGE FLASHING – OPTION 02



- Install Master Builders Solutions materials in accordance with current installation instructions.
- Unsatisfactory conditions shall be reported to the General Contractor and corrected before the application of Master Builders Solutions products.
- It is recommended to lap coping or roof edge flashing over the Platinum CI Stucco Ultra system a minimum of 2" (50 mm) with drip edge sealed.

PCISU-28

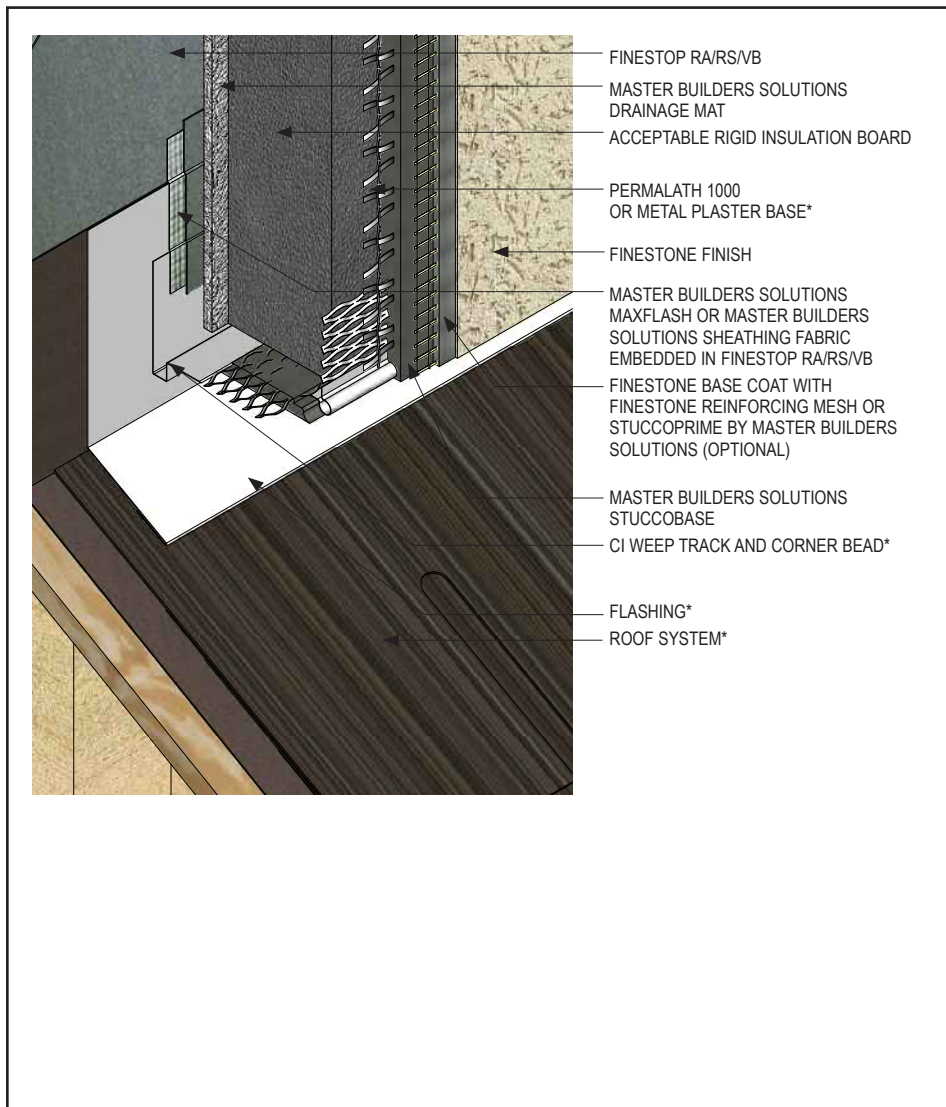
(\*NOTE: BY OTHERS)

This detail represents Master Builders Solutions Construction Systems US, LLC (hereinafter Master Builders Solutions) latest recommendations. It is presented in good faith by Master Builders Solutions. The detail is subject to change without notice. Master Builders Solutions accepts no liability for the end use of the detail. For conditions not shown, consult Master Builders Solutions for review of specific detail.



# Platinum CI Stucco Ultra

## TYPICAL FLASHING / TERMINATION AT ROOF



- Install Master Builders Solutions materials in accordance with current installation instructions.
- Unsatisfactory conditions shall be reported to the General Contractor and corrected before the application of Master Builders Solutions products.
- Use Master Builders Solutions MaxFlash Liquid Flashing Membrane or embed Master Builders Solutions Sheathing Fabric in Finestop RA/RS/VB where it laps over the CI Weep Track flange.
- Terminate Platinum CI Stucco Ultra system a minimum of 2" (50 mm) above sloped roof.

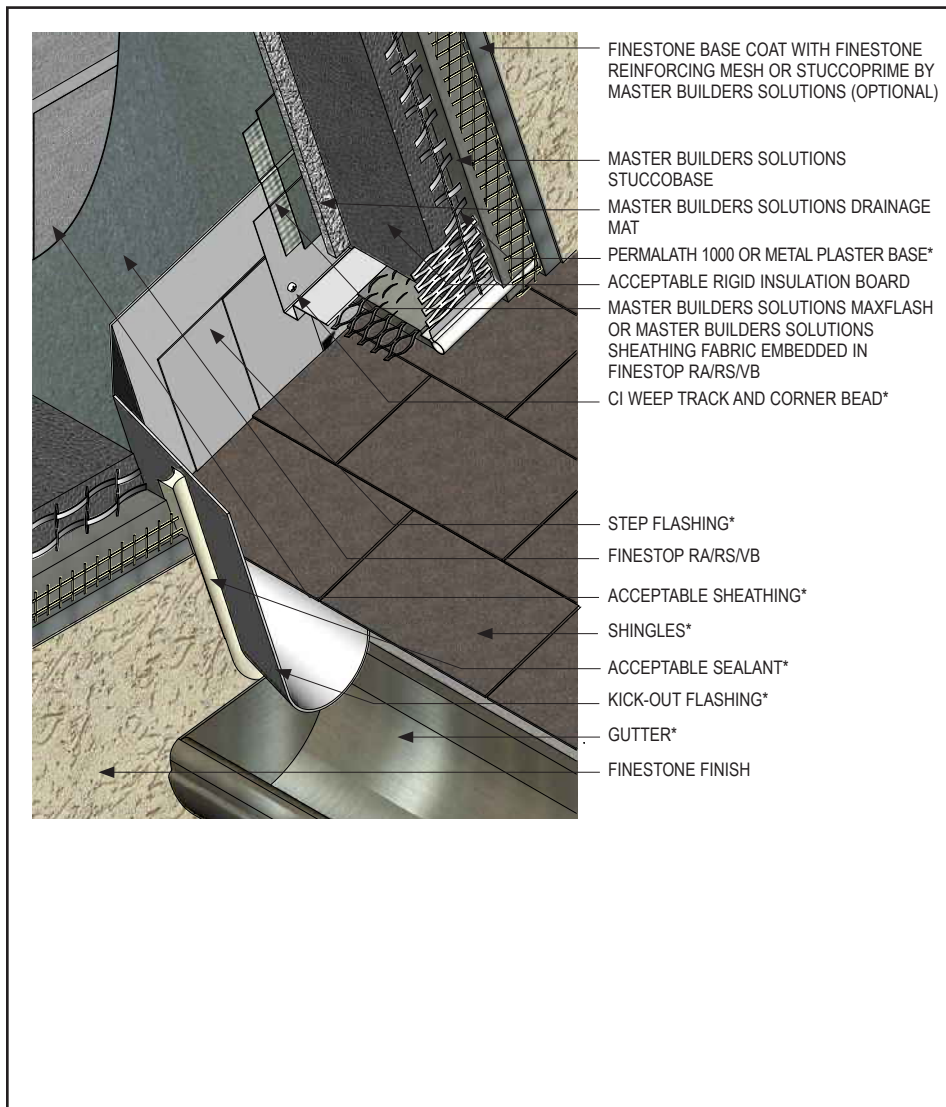
PCISU-29

(\*NOTE: BY OTHERS)

This detail represents Master Builders Solutions Construction Systems US, LLC (hereinafter Master Builders Solutions) latest recommendations. It is presented in good faith by Master Builders Solutions. The detail is subject to change without notice. Master Builders Solutions accepts no liability for the end use of the detail. For conditions not shown, consult Master Builders Solutions for review of specific detail.

# Platinum CI Stucco Ultra

## TYPICAL KICK-OUT FLASHING



- Install Master Builders Solutions materials in accordance with current installation instructions.
- Unsatisfactory conditions shall be reported to the General Contractor and corrected before the application of Master Builders Solutions products.
- Use Master Builders Solutions MaxFlash Liquid Flashing Membrane or Master Builders Solutions Sheathing Fabric in Finestop RA/RS/VB where it laps over the CI Weep Track flange.
- Terminate Platinum CI Stucco Ultra system a minimum of 2" (50 mm) above sloped roof.
- Extend step flashing 2" (50 mm) behind Platinum CI Stucco Ultra system.
- Kickout flashing: sealed or soldered seams, recommended minimum 4" (100 mm) in height, extend 2" (50 mm) from wall and angled to direct water into gutter/away from wall surface.

PCISU-30

(\*NOTE: BY OTHERS)

This detail represents Master Builders Solutions Construction Systems US, LLC (hereinafter Master Builders Solutions) latest recommendations. It is presented in good faith by Master Builders Solutions. The detail is subject to change without notice. Master Builders Solutions accepts no liability for the end use of the detail. For conditions not shown, consult Master Builders Solutions for review of specific detail.

## **Warranty**

Master Builders Solutions Construction Systems US, LLC ("Master Builders") warrants this product to be free from manufacturing defects and to meet the technical properties on the current Technical Data Guide, if used as directed within shelf life. Satisfactory results depend not only on quality products but also upon many factors beyond our control. Master Builders MAKES NO OTHER WARRANTY OR GUARANTEE, EXPRESS OR IMPLIED, INCLUDING WARRANTIES OF MERCHANTABILITY OR FITNESS FOR A PARTICULAR PURPOSE WITH RESPECT TO ITS PRODUCTS. The sole and exclusive remedy of Purchaser for any claim concerning this product, including but not limited to, claims alleging breach of warranty, negligence, strict liability or otherwise, is shipment to purchaser of product equal to the amount of product that fails to meet this warranty or refund of the original purchase price of product that fails to meet this warranty, at the sole option of Master Builders. Any claims concerning this product must be received in writing within one (1) year from the date of shipment and any claims not presented within that period are waived by Purchaser. Master Builders WILL NOT BE RESPONSIBLE FOR ANY SPECIAL, INCIDENTAL, CONSEQUENTIAL (INCLUDING LOST PROFITS) OR PUNITIVE DAMAGES OF ANY KIND.

Purchaser must determine the suitability of the products for the intended use and assumes all risks and liabilities in connection therewith. This information and all further technical advice are based on Master Builders' present knowledge and experience. However, Master Builders assumes no liability for providing such information and advice including the extent to which such information and advice may relate to existing third party intellectual property rights, especially patent rights, nor shall any legal relationship be created by or arise from the provision of such information and advice. Master Builders reserves the right to make any changes according to technological progress or further developments. The Purchaser of the Product(s) must test the product(s) for suitability for the intended application and purpose before proceeding with a full application of the product(s). Performance of the product described herein should be verified by testing and carried out by qualified experts.

**For professional use only. Not for sale to or use by the general public.**

For the most current version of this literature, please visit our website at [finestone.master-builders-solutions.com/en](https://finestone.master-builders-solutions.com/en).

**Master Builders Solutions Construction Systems US, LLC**

889 Valley Park Drive, Shakopee, MN 55379  
[finestone.master-builders-solutions.com/en](https://finestone.master-builders-solutions.com/en)

**Customer Service** +1 (800) 433-9517  
**Technical Service** +1 (800) 589-1336