



Platinum CI Stucco

Continuously Insulated Cement
Plaster Stucco System

Typical Details



A brand of
MASTER[®]
» BUILDERS
SOLUTIONS

(THIS PAGE INTENTIONALLY LEFT BLANK)

Platinum CI Stucco

Typical Details

Table of Contents

- | | |
|--------------------------------------------------------------------------|--------------------------------------------------------------------------|
| 1. Typical Fastening Pattern | 16. Typical Flanged Window Head |
| 2. Typical Framed / Sheathed Construction | 17. Typical Window Jamb (Flush) |
| 3. Typical Masonry / Concrete Construction | 18. Typical Window Jamb (Recessed) |
| 4. Typical Termination at Foundation – Flush with Casing / Stop Bead | 19. Typical Flanged Window Jamb |
| 5. Typical Termination at Foundation with Casing / Stop Bead | 20. Typical Window Sill (Flush) |
| 6. Typical Termination at Foundation with CI Weep Track | 21. Typical Window Sill (Recessed) |
| 7. Typical Change in Substrate | 22. Typical Flanged Window Sill |
| 8. Typical Trim Junction | 23. Typical Pipe Penetration |
| 9. Typical Surface Control Joint | 24. Typical Dryer Vent |
| 10. Typical Inside Corner Control Joint – Framed / Sheathed Construction | 25. Typical Downspout |
| 11. Typical EPS Shape Application | 26. Typical Light Fixture |
| 12. Typical Corner Bead | 27. Typical Termination at Metal Coping / Roof Edge Flashing – Option 01 |
| 13. Typical Decorative Shape | 28. Typical Termination at Metal Coping / Roof Edge Flashing – Option 02 |
| 14. Typical Window Head (Flush) | 29. Typical Flashing / Termination at Roof |
| 15. Typical Window Head (Recessed) | 30. Typical Kick-Out Flashing |

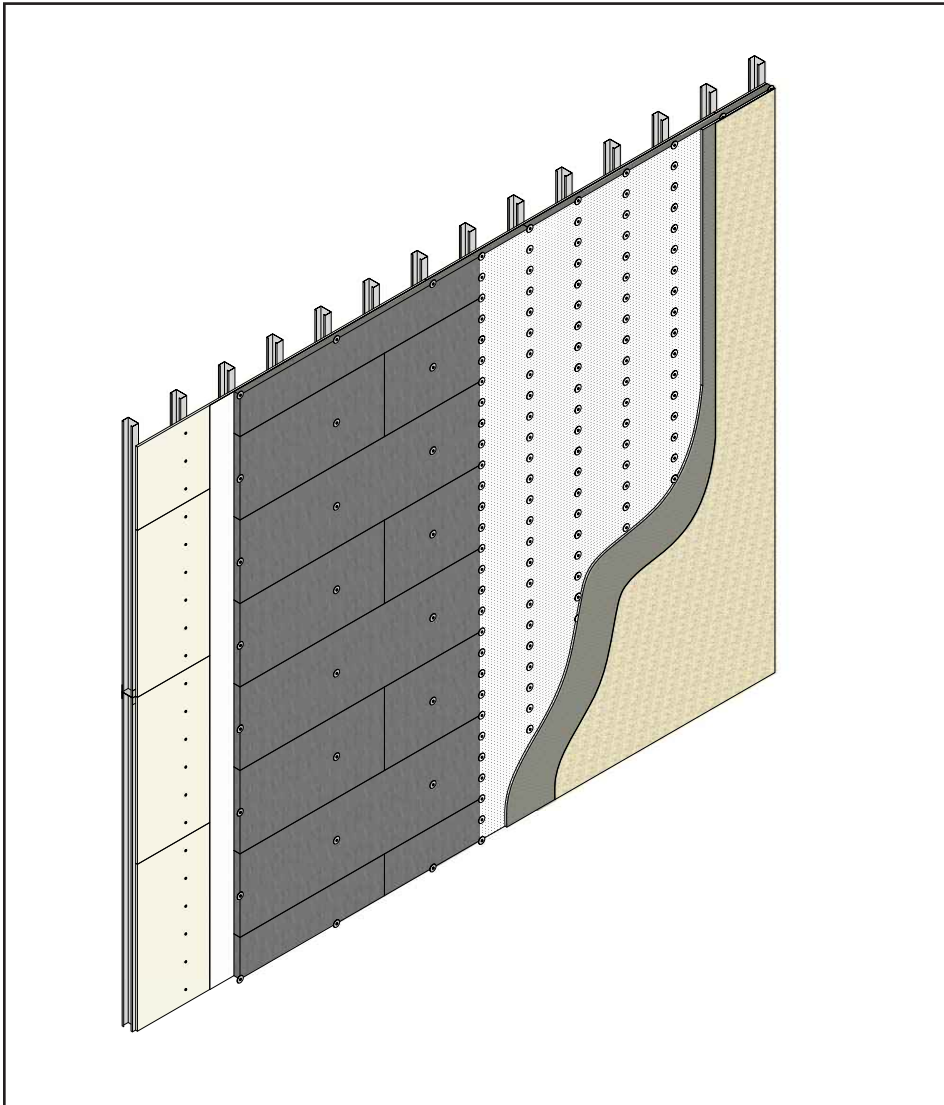
Notes:

- **Install Master Builders Solutions materials in accordance with current installation instructions.**
- **Water-resistive barriers other than Finestop RA/RS/VB, Tyvek StuccoWrap and DrainWrap require grooved Rigid Insulation Board. Grooves are 1" x 1/4" (25 mm x 6 mm) deep at 12" (305 mm) o.c., parallel to the 2' (610 mm) dimension.**
- **Unsatisfactory conditions shall be reported to the General Contractor and corrected before the application of Master Builders Solutions products.**
- **The details within represent Master Builders Solutions Construction Systems US, LLC (hereinafter Master Builders Solutions) latest recommendations. They are presented in good faith by Master Builders Solutions. The details are subject to change without notice. Master Builders Solutions accepts no liability for the end use of the details. For conditions not shown, consult Master Builders Solutions for review of specific detail.**

(THIS PAGE INTENTIONALLY LEFT BLANK)

Platinum CI Stucco Details

TYPICAL FASTENING PATTERN



- Sheathing:
Fasten per sheathing manufacturer's recommendations or project design requirements.
- Water-Resistive Barrier:
Install per barrier manufacturer's instructions.
- Approved Rigid Insulation Board:
Secure with 2–3 fasteners per board to hold in place until lath attachment.
- Lath:
Permalath 1000: use appropriate fasteners spaced not more than 6" (152 mm) o.c. vertically, 16" (406 mm) o.c. horizontally; metal or wire lath: use appropriate fasteners spaced not more than 7" (178 mm) o.c. vertically, 16" (406 mm) or 24" (610 mm) o.c. horizontally, per requirements of ASTM C1063.

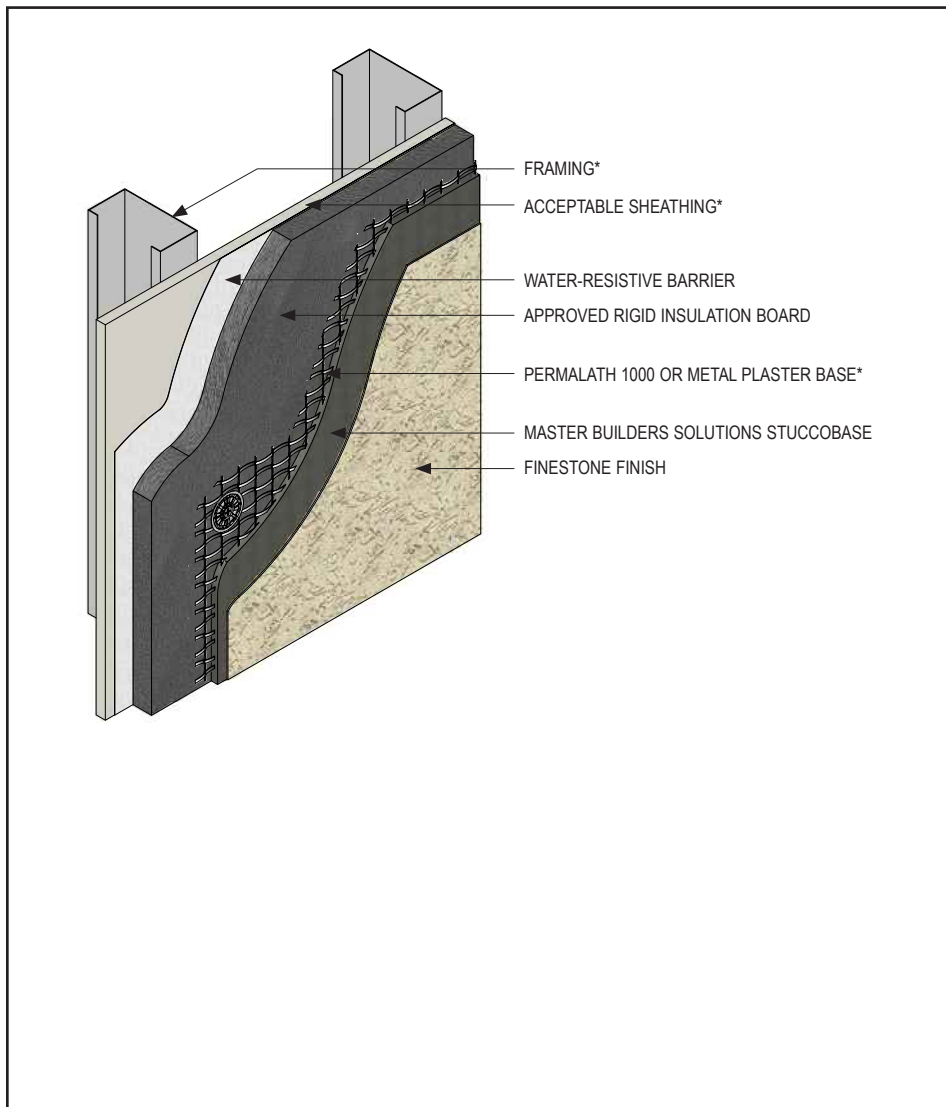
PCIS-01 2109

(*NOTE: BY OTHERS)

This detail represents Master Builders Solutions Construction Systems US, LLC (hereinafter Master Builders Solutions) latest recommendations. It is presented in good faith by Master Builders Solutions. The detail is subject to change without notice. Master Builders Solutions accepts no liability for the end use of the detail. For conditions not shown, consult Master Builders Solutions for review of specific detail.

Platinum CI Stucco Details

TYPICAL FRAMED / SHEATHED CONSTRUCTION



- Basic requirements for water resistive barrier and insulation:
 - One layer No 15 felt ASTM D226 Type I or equivalent and grooved Rigid Insulation Board.
 - Finestop RA/RS/VB or one layer Tyvek StuccoWrap and flat Rigid Insulation Board.
 - Water-resistive barrier shall comply with applicable building code.
- Basic requirements for Plaster Base:
 - Master Builders Solutions StuccoBase 3/8" to 1/2" thickness: Min. 1" 20 ga. wire, min. 2.5 lb/sq.yd. metal lath or acceptable alternative.
 - Master Builders Solutions StuccoBase equal to or greater than 1/2" thickness: Permalath 1000 or min. 1 1/2" 17 ga. wire, min. 2.5 lb/sq.yd. metal lath or acceptable alternative.

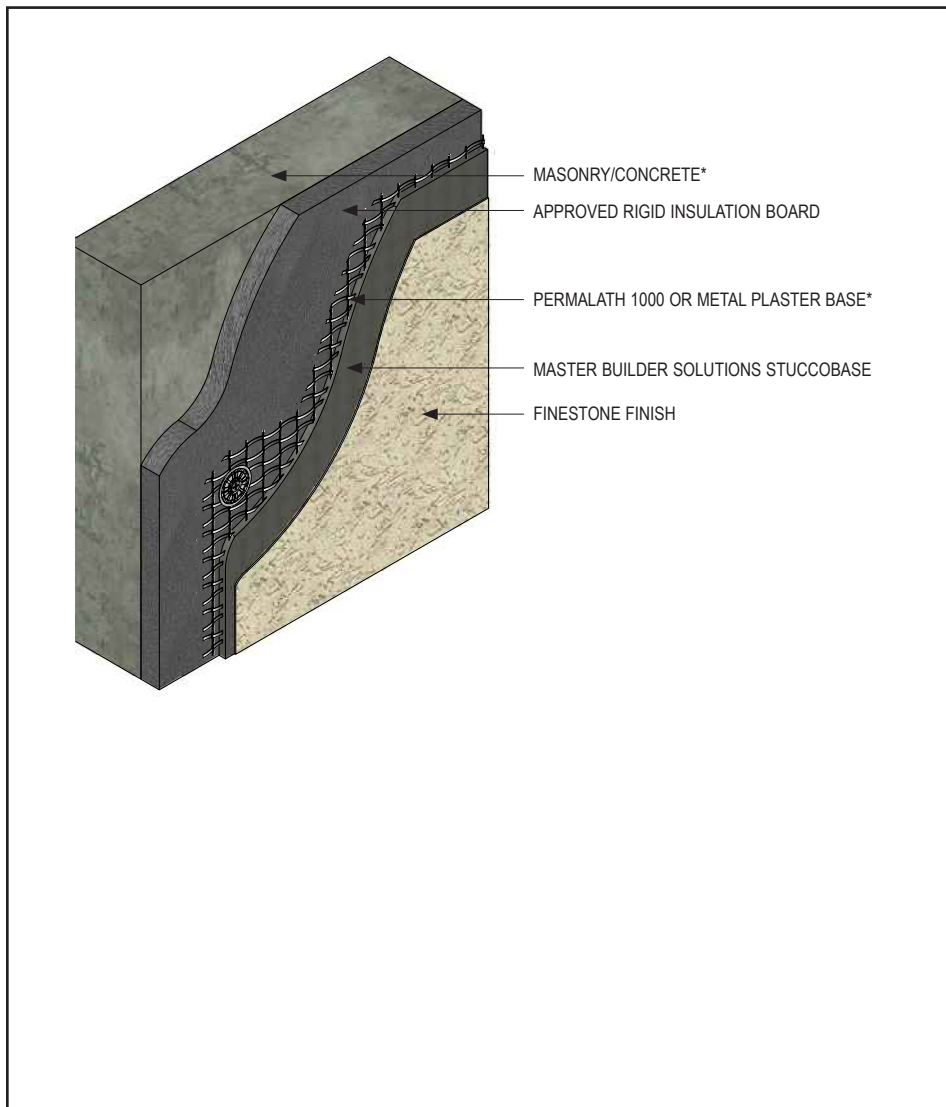
PCIS-02 2109

(*NOTE: BY OTHERS)

This detail represents Master Builders Solutions Construction Systems US, LLC (hereinafter Master Builders Solutions) latest recommendations. It is presented in good faith by Master Builders Solutions. The detail is subject to change without notice. Master Builders Solutions accepts no liability for the end use of the detail. For conditions not shown, consult Master Builders Solutions for review of specific detail.

Platinum CI Stucco Details

TYPICAL MASONRY / CONCRETE CONSTRUCTION



- Water-resistive barrier over concrete or masonry substrate is optional
- Basic requirements for Plaster Base:
 - Master Builders Solutions StuccoBase $\frac{3}{8}$ " to $\frac{1}{2}$ " thickness: Min. 1" 20 ga. wire, min. 2.5 lb/sq.yd. metal lath or acceptable alternative
 - Master Builders Solutions StuccoBase equal to or greater than $\frac{1}{2}$ " thickness: Permalath 1000 or min. $\frac{1}{2}$ " 17 ga. wire, min. 2.5 lb/sq.yd. metal lath or acceptable alternative

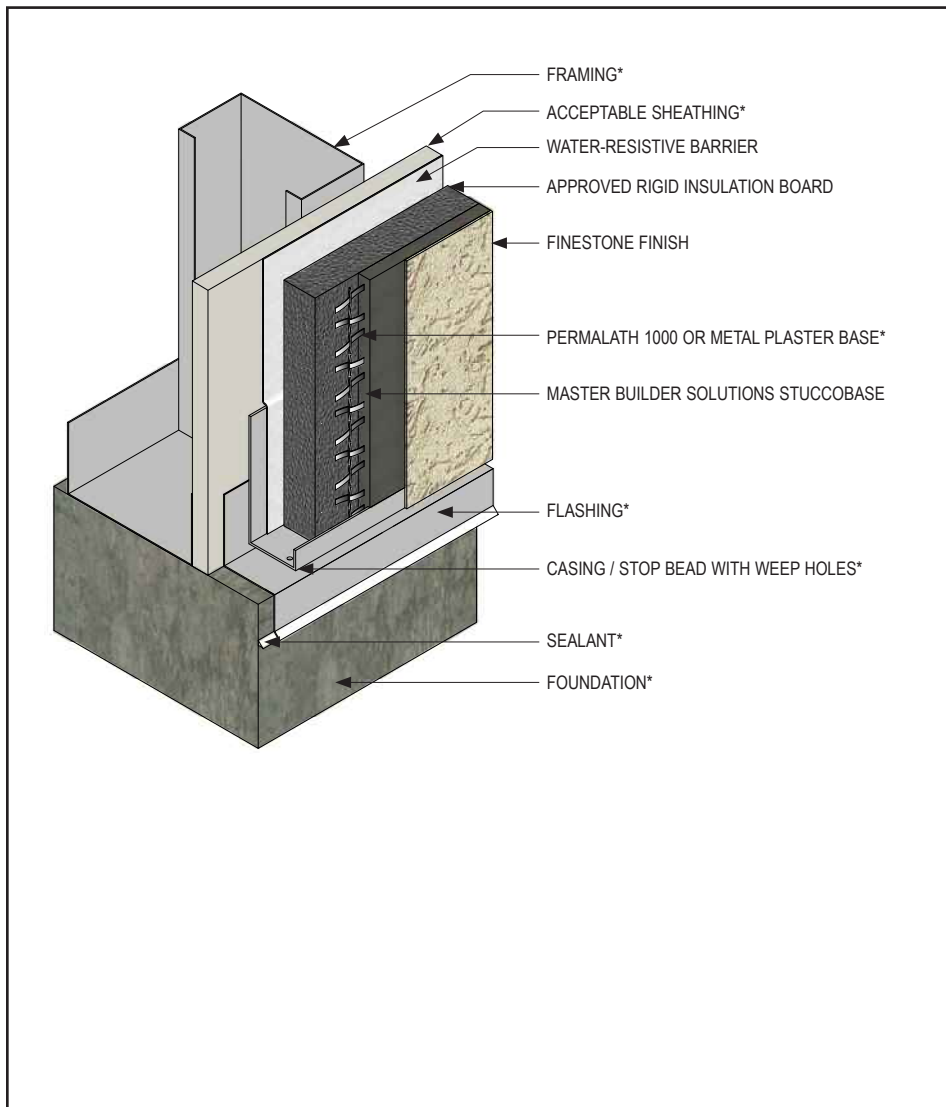
PCIS-03 2109

(*NOTE: BY OTHERS)

This detail represents Master Builders Solutions Construction Systems US, LLC (hereinafter Master Builders Solutions) latest recommendations. It is presented in good faith by Master Builders Solutions. The detail is subject to change without notice. Master Builders Solutions accepts no liability for the end use of the detail. For conditions not shown, consult Master Builders Solutions for review of specific detail.

Platinum CI Stucco Details

TYPICAL TERMINATION AT FOUNDATION – FLUSH WITH CASING / STOP BEAD



- Terminate the Platinum CI Stucco system a minimum of 6" (152 mm) above raw earth and 2" (50 mm) above paved surface.
- Ensure water-resistive barrier laps over the casing/stop bead flange.
- Ensure casing/stop bead includes weep holes to facilitate drainage.

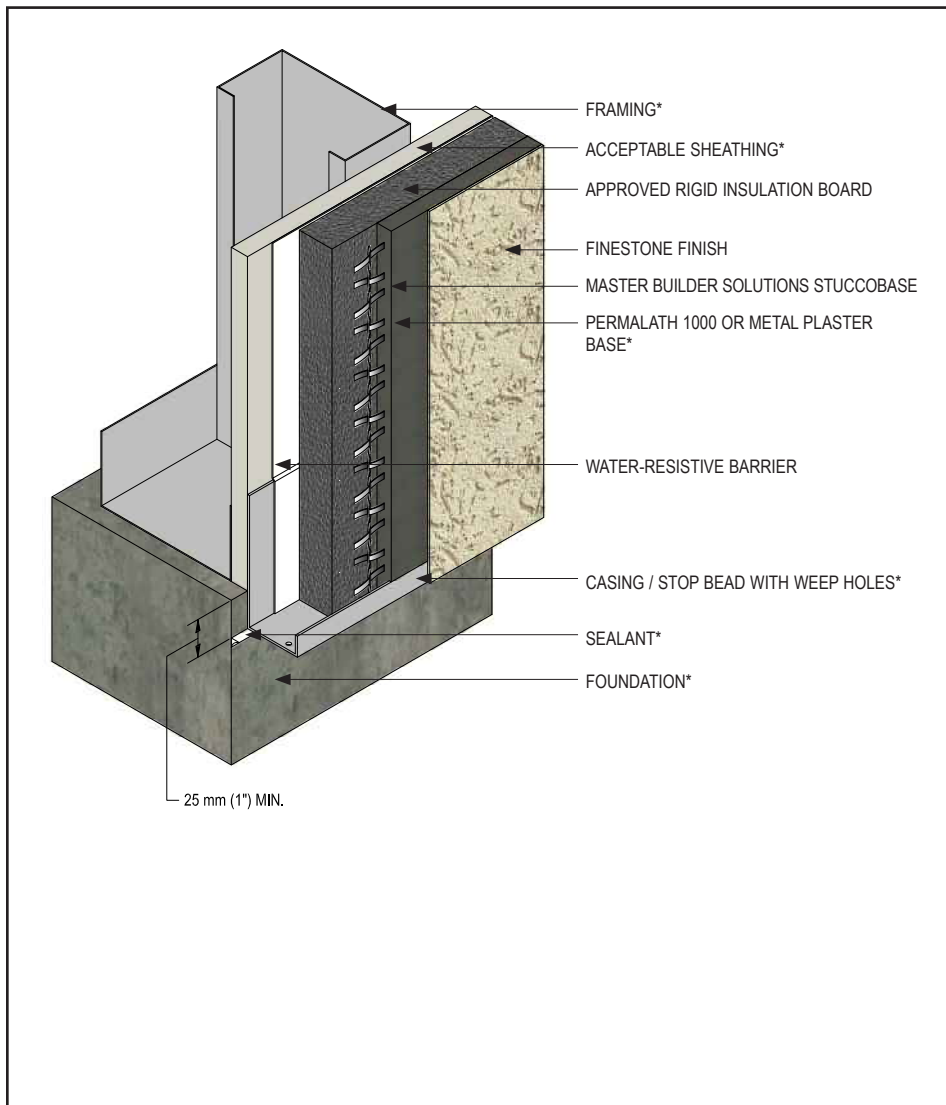
PCIS-04 2109

(*NOTE: BY OTHERS)

This detail represents Master Builders Solutions Construction Systems US, LLC (hereinafter Master Builders Solutions) latest recommendations. It is presented in good faith by Master Builders Solutions. The detail is subject to change without notice. Master Builders Solutions accepts no liability for the end use of the detail. For conditions not shown, consult Master Builders Solutions for review of specific detail.

Platinum CI Stucco Details

TYPICAL TERMINATION AT FOUNDATION WITH CASING / STOP BEAD



- Terminate the Platinum CI Stucco system a minimum of 6" (152 mm) above raw earth and 2" (50 mm) above paved surface.
- Provide minimum 1" (25 mm) overlap at framing/foundation transition.
- Ensure water-resistive barrier laps over the casing/stop bead flange.
- Ensure casing/stop bead includes weep holes to facilitate drainage.

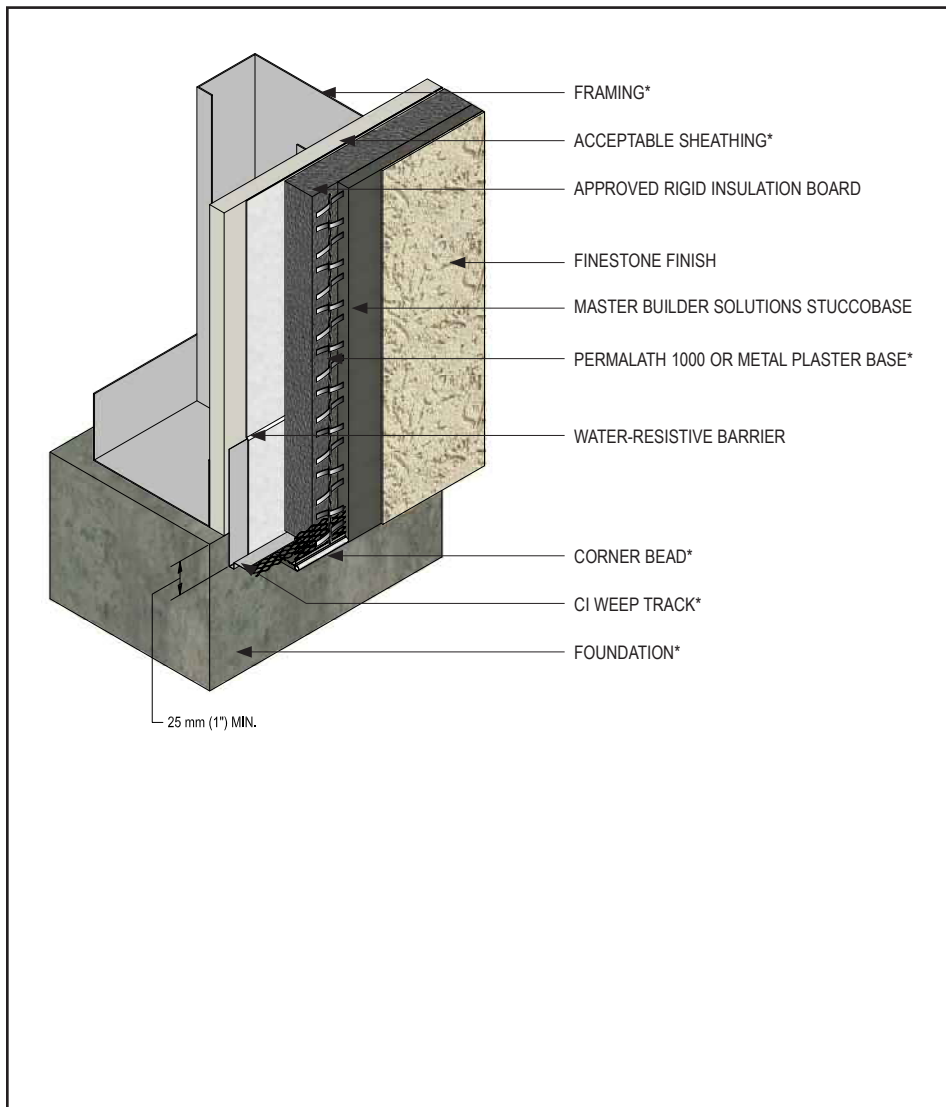
PCIS-05 2109

(*NOTE: BY OTHERS)

This detail represents Master Builders Solutions Construction Systems US, LLC (hereinafter Master Builders Solutions) latest recommendations. It is presented in good faith by Master Builders Solutions. The detail is subject to change without notice. Master Builders Solutions accepts no liability for the end use of the detail. For conditions not shown, consult Master Builders Solutions for review of specific detail.

Platinum CI Stucco Details

TYPICAL TERMINATION AT FOUNDATION WITH CI WEEP TRACK



- Terminate the Platinum CI Stucco system a minimum of 6" (152 mm) above raw earth and 2" (50 mm) above paved surface.
- Provide minimum 1" (25 mm) overlap at framing/foundation transition.
- Ensure water-resistive barrier laps over the CI Weep Track flange.

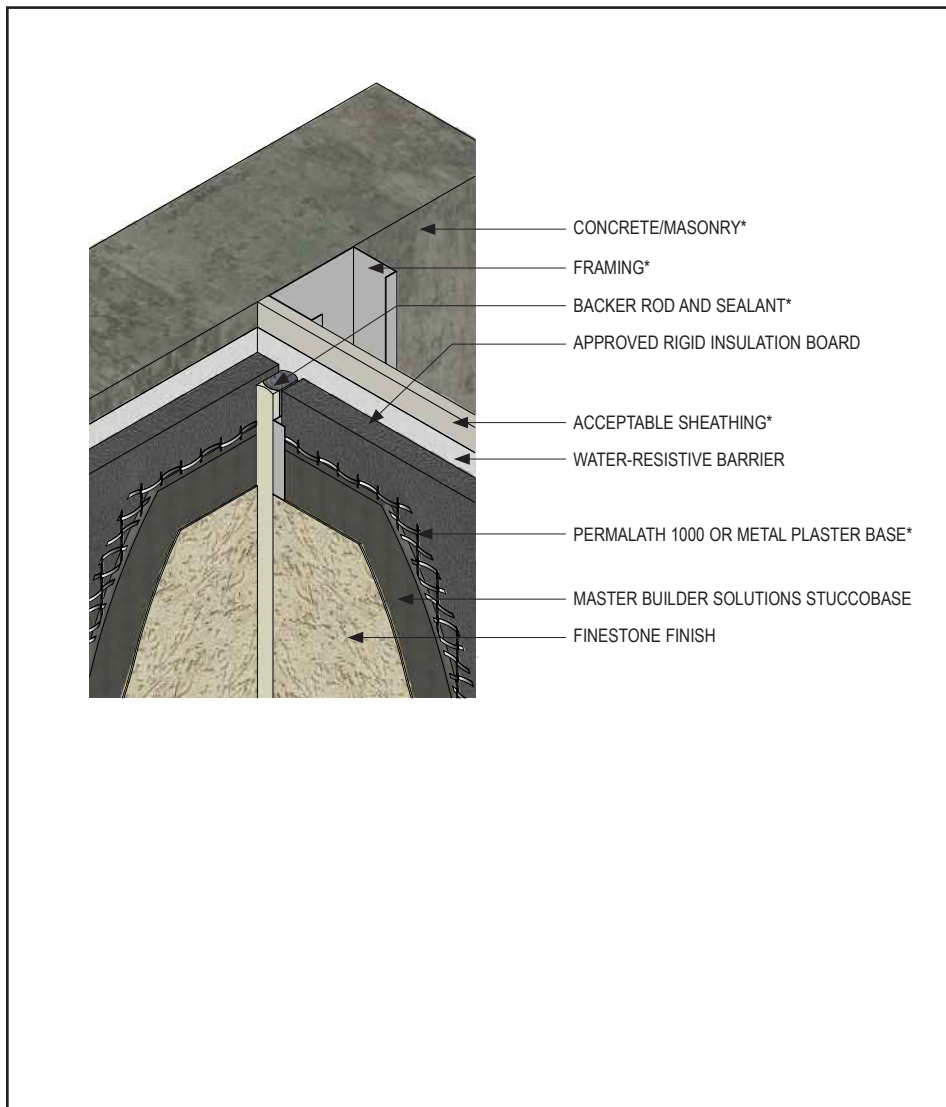
PCIS-06 2109

(*NOTE: BY OTHERS)

This detail represents Master Builders Solutions Construction Systems US, LLC (hereinafter Master Builders Solutions) latest recommendations. It is presented in good faith by Master Builders Solutions. The detail is subject to change without notice. Master Builders Solutions accepts no liability for the end use of the detail. For conditions not shown, consult Master Builders Solutions for review of specific detail.

Platinum CI Stucco Details

TYPICAL CHANGE IN SUBSTRATE



- Ensure water-resistive barrier application is continuous behind the Platinum CI Stucco system at change in substrate.
- Do not apply finish into joint to receive sealant.

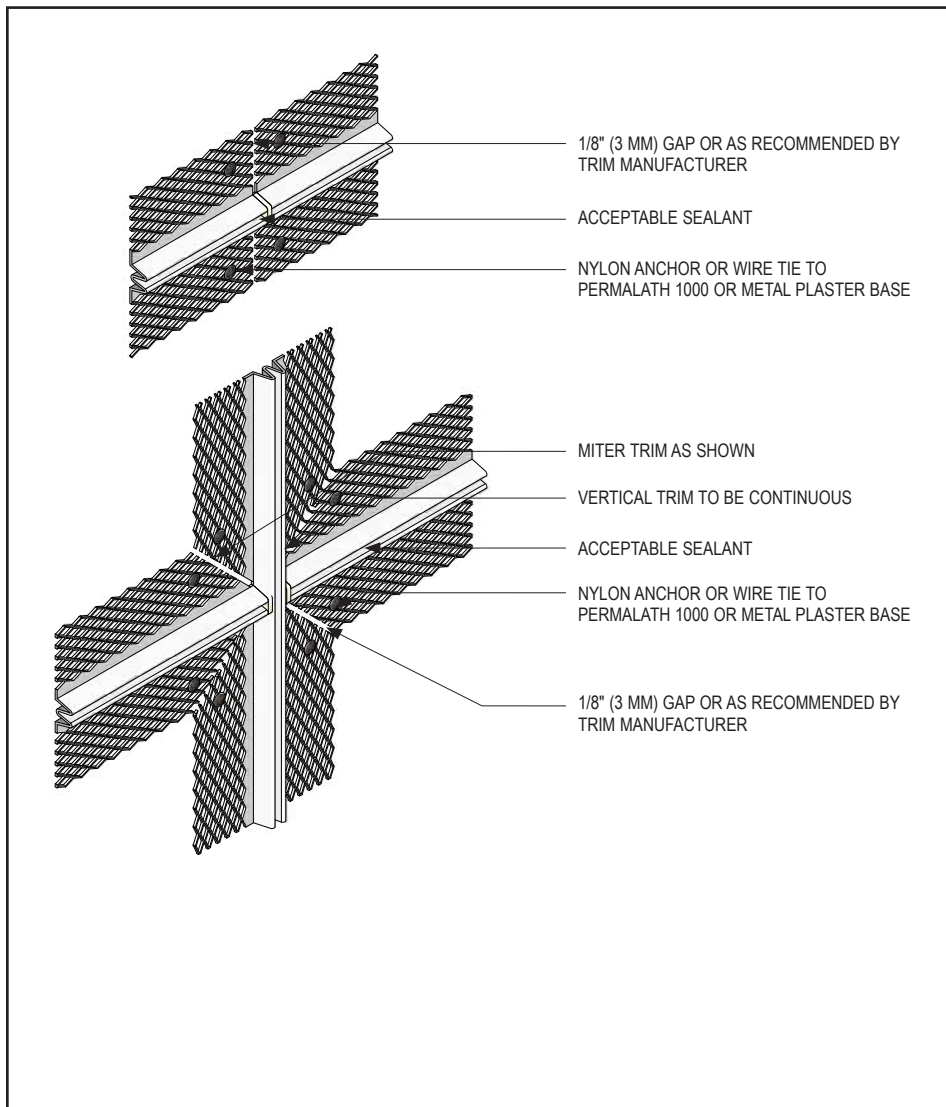
PCIS-07 2109

(*NOTE: BY OTHERS)

This detail represents Master Builders Solutions Construction Systems US, LLC (hereinafter Master Builders Solutions) latest recommendations. It is presented in good faith by Master Builders Solutions. The detail is subject to change without notice. Master Builders Solutions accepts no liability for the end use of the detail. For conditions not shown, consult Master Builders Solutions for review of specific detail.

Platinum CI Stucco Details

TYPICAL TRIM JUNCTION



- At trim intersection it is recommended that the vertical trim be continuous.

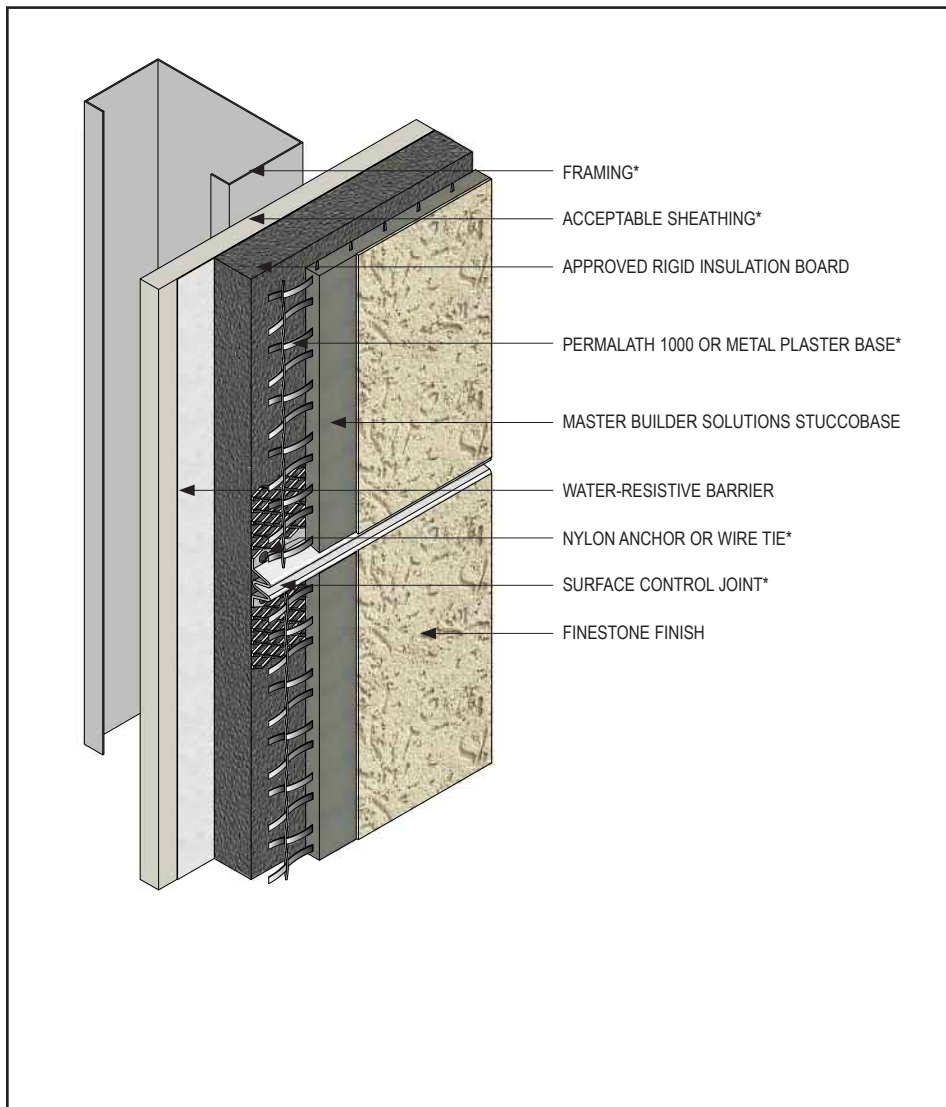
PCIS-08 2109

(*NOTE: BY OTHERS)

This detail represents Master Builders Solutions Construction Systems US, LLC (hereinafter Master Builders Solutions) latest recommendations. It is presented in good faith by Master Builders Solutions. The detail is subject to change without notice. Master Builders Solutions accepts no liability for the end use of the detail. For conditions not shown, consult Master Builders Solutions for review of specific detail.

Platinum CI Stucco Details

TYPICAL SURFACE CONTROL JOINT



- Provide control joints every 144 ft² (13m²) and placement as determined by the Design Professional. Maximum recommended uncontrolled length or width is 18 ft (5.5 m) and a maximum uncontrolled length to width ratio of 2 ½ to 1.
- Lath must be broken at the control joint accessory.

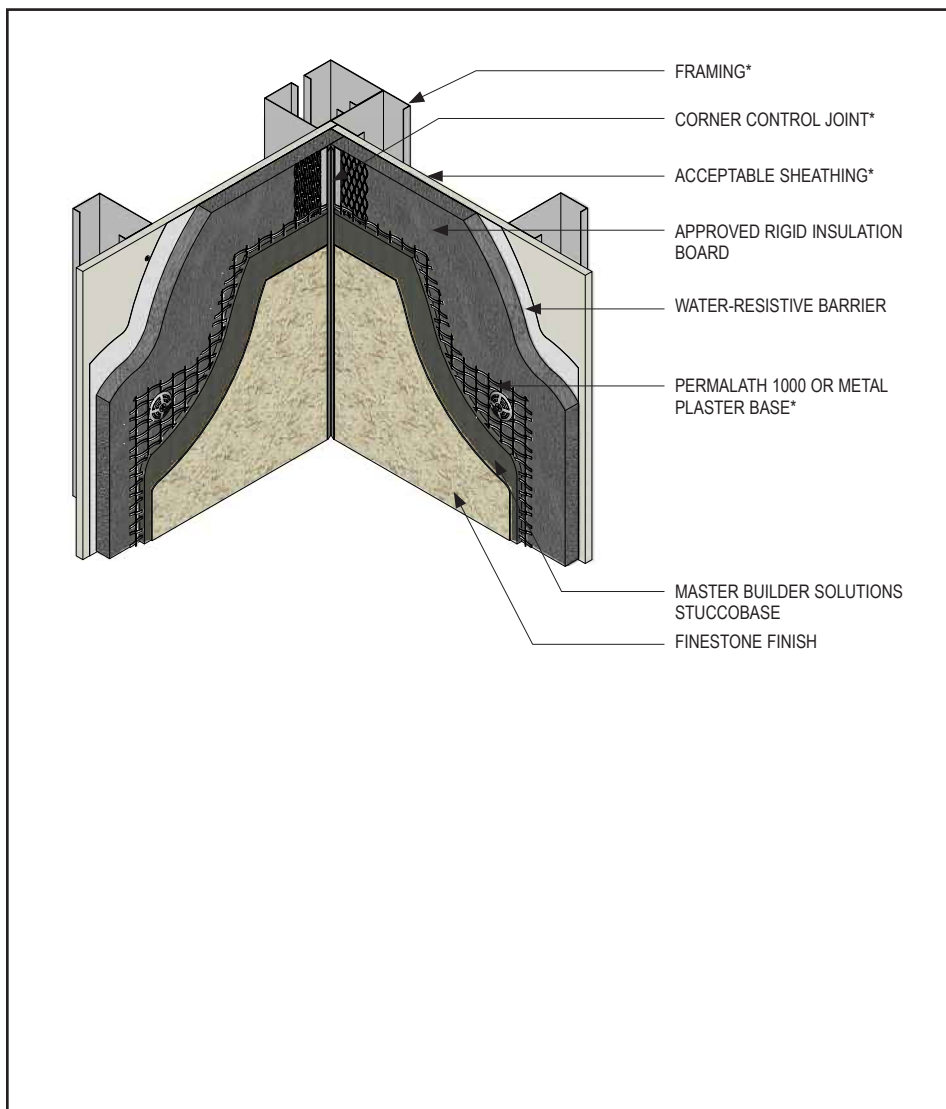
PCIS-09 2109

(*NOTE: BY OTHERS)

This detail represents Master Builders Solutions Construction Systems US, LLC (hereinafter Master Builders Solutions) latest recommendations. It is presented in good faith by Master Builders Solutions. The detail is subject to change without notice. Master Builders Solutions accepts no liability for the end use of the detail. For conditions not shown, consult Master Builders Solutions for review of specific detail.

Platinum CI Stucco Details

TYPICAL INSIDE CORNER CONTROL JOINT – FRAMED / SHEATHED CONSTRUCTION



- Ensure water-resistive barrier application is continuous behind the Platinum CI Stucco system.

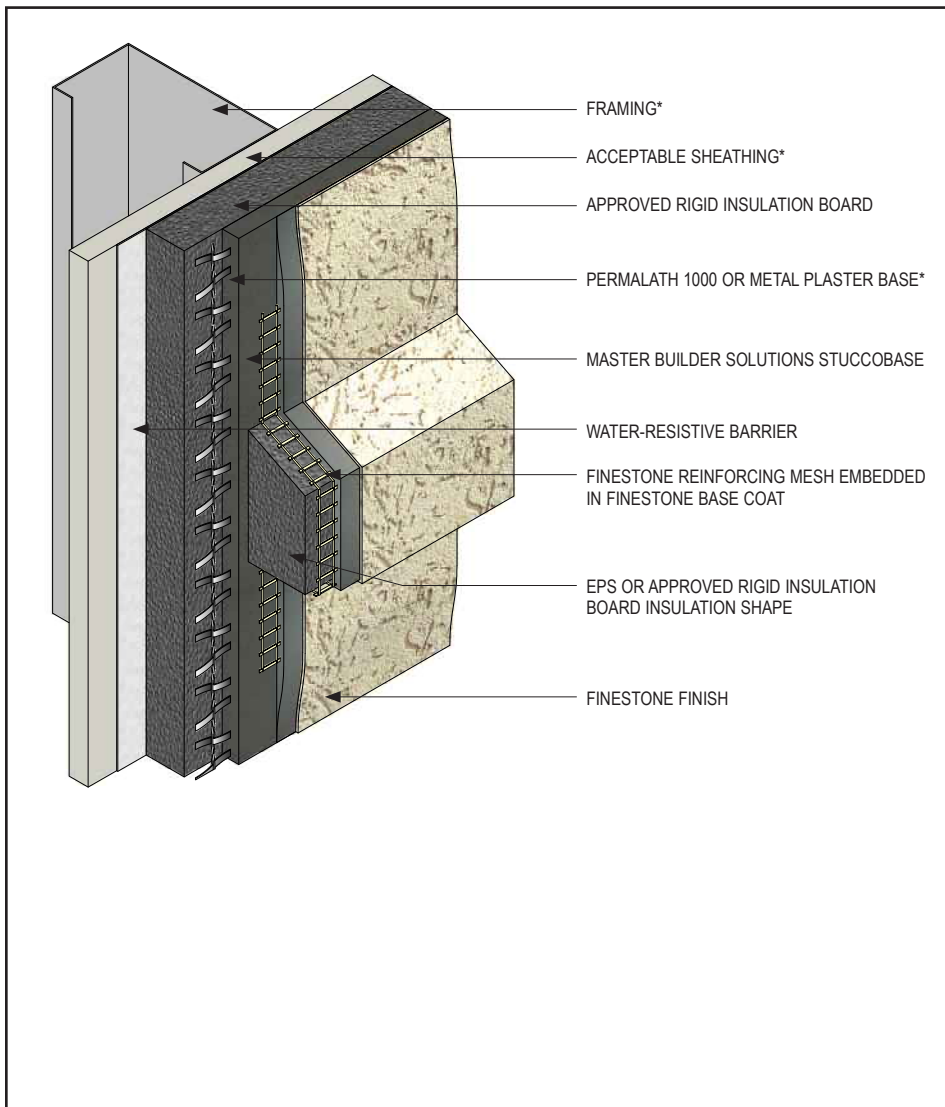
PCIS-10 2109

(*NOTE: BY OTHERS)

This detail represents Master Builders Solutions Construction Systems US, LLC (hereinafter Master Builders Solutions) latest recommendations. It is presented in good faith by Master Builders Solutions. The detail is subject to change without notice. Master Builders Solutions accepts no liability for the end use of the detail. For conditions not shown, consult Master Builders Solutions for review of specific detail.

Platinum CI Stucco Details

TYPICAL EPS OR APPROVED RIGID BOARD SHAPE APPLICATION



- Extend Master Builder Solutions DiamondShield or Finestone Reinforcing Mesh and Base Coat from band or shape onto Master Builder Solutions StuccoBase a minimum of 3" (76 mm).
- Provide a 6:12 slope on horizontal applications greater than 1".
- Adhere EPS or approved Rigid Insulation band/shape with Finestone base coat to Master Builder Solutions StuccoBase surface.

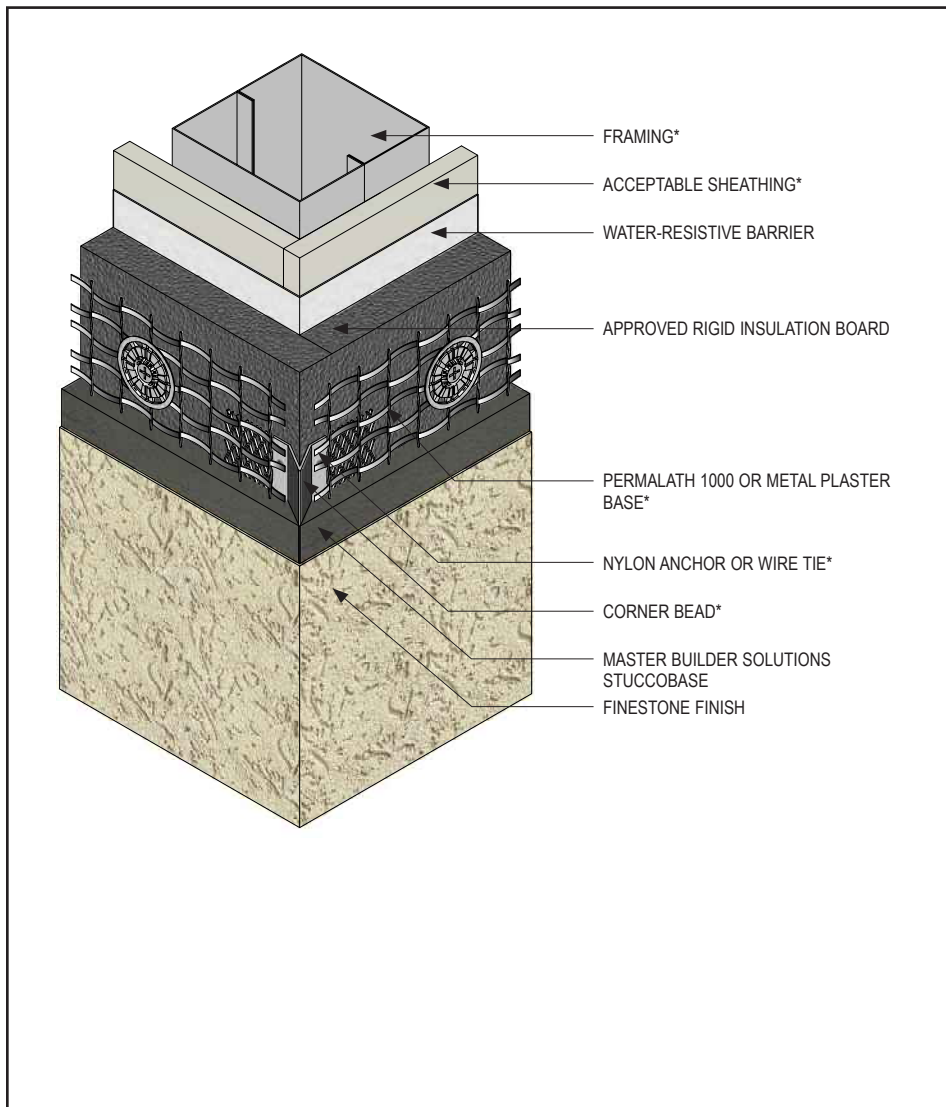
PCIS-11 2109

(*NOTE: BY OTHERS)

This detail represents Master Builders Solutions Construction Systems US, LLC (hereinafter Master Builders Solutions) latest recommendations. It is presented in good faith by Master Builders Solutions. The detail is subject to change without notice. Master Builders Solutions accepts no liability for the end use of the detail. For conditions not shown, consult Master Builders Solutions for review of specific detail.

Platinum CI Stucco Details

TYPICAL CORNER BEAD



- Attach corner bead with wire ties, anchors or fasteners to resist movement during application of Master Builder Solutions StuccoBase.
- Fill corner bead solid with Master Builder Solutions StuccoBase.

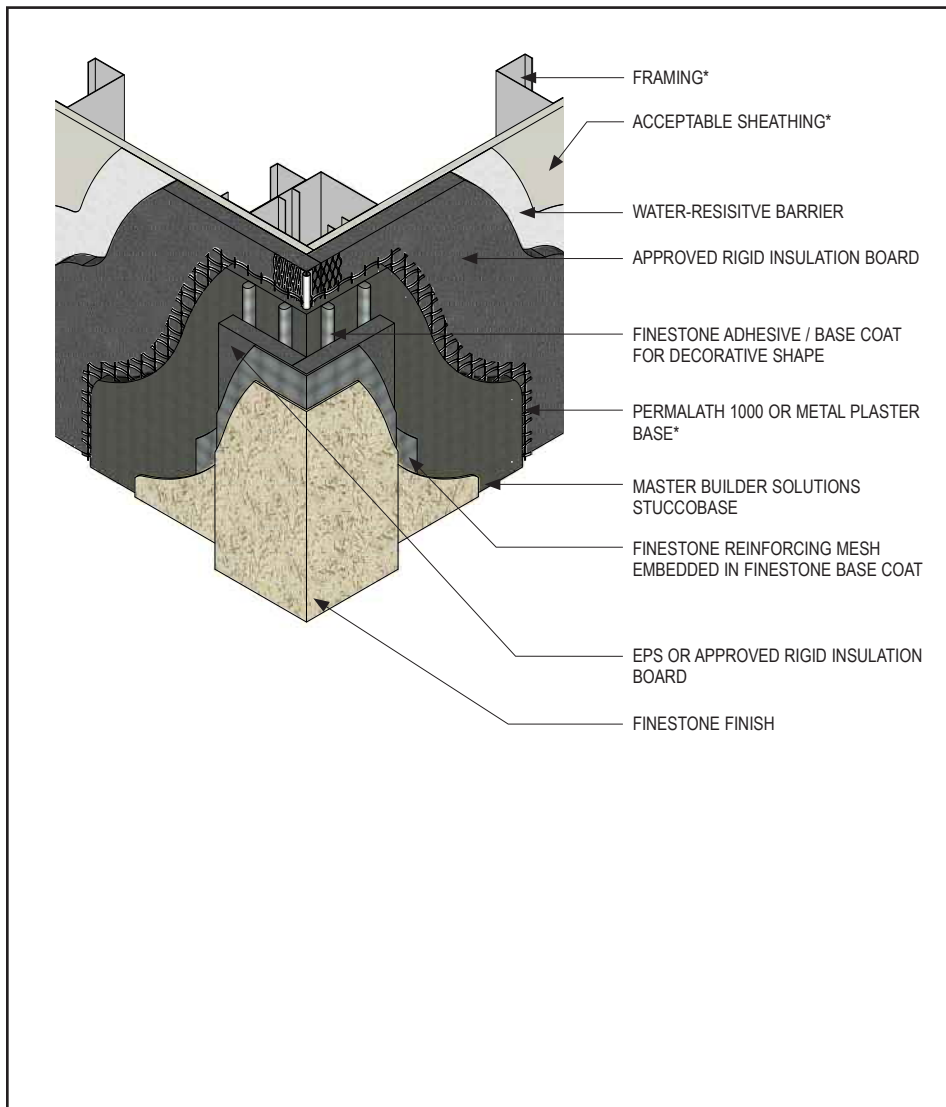
PCIS-12 2109

(*NOTE: BY OTHERS)

This detail represents Master Builders Solutions Construction Systems US, LLC (hereinafter Master Builders Solutions) latest recommendations. It is presented in good faith by Master Builders Solutions. The detail is subject to change without notice. Master Builders Solutions accepts no liability for the end use of the detail. For conditions not shown, consult Master Builders Solutions for review of specific detail.

Platinum CI Stucco Details

TYPICAL DECORATIVE SHAPE



- Extend Master Builder Solutions DiamondShield or Finestone Reinforcing Mesh and Base Coat from band or shape onto Master Builder Solutions StuccoBase a minimum of 3" (76 mm).
- Adhere EPS or approved Rigid Insulation band/shape with Finestone base coat to Master Builder Solutions StuccoBase surface.

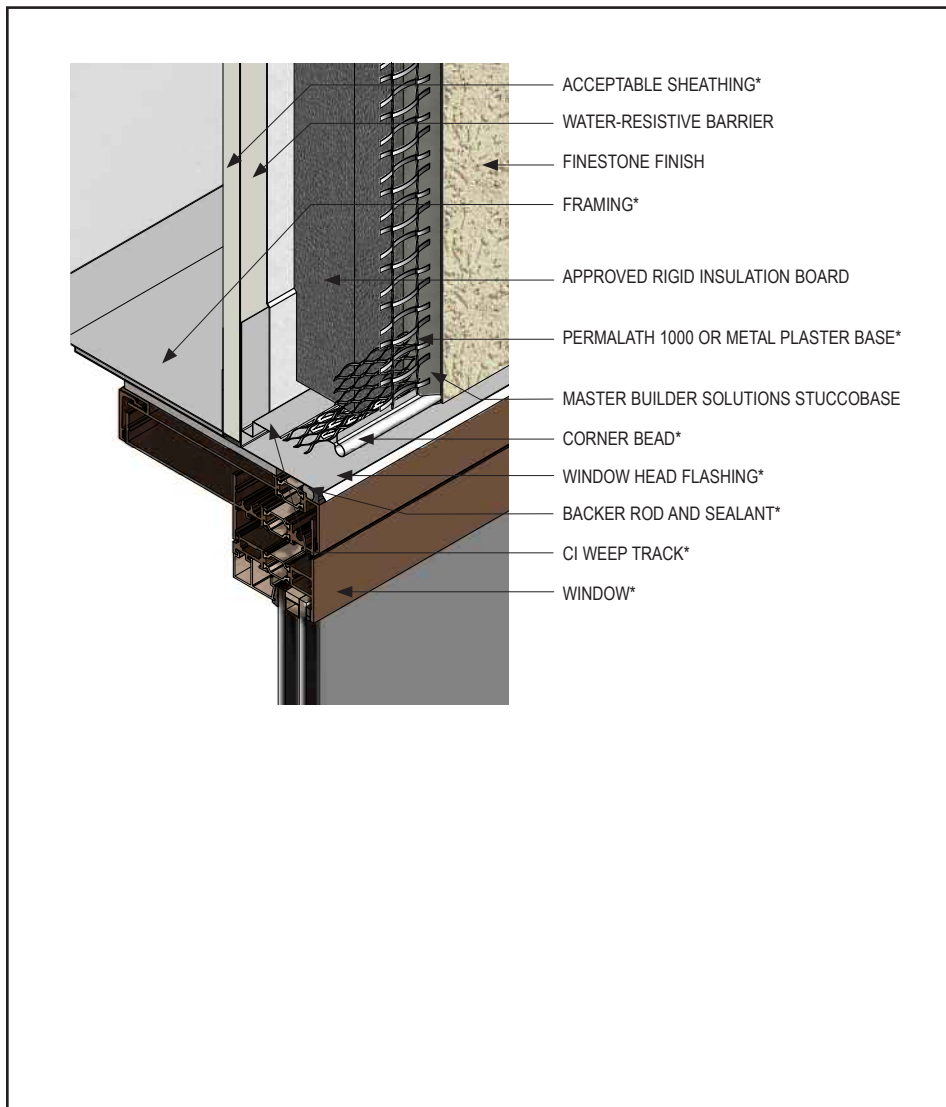
PCIS-13 2109

(*NOTE: BY OTHERS)

This detail represents Master Builders Solutions Construction Systems US, LLC (hereinafter Master Builders Solutions) latest recommendations. It is presented in good faith by Master Builders Solutions. The detail is subject to change without notice. Master Builders Solutions accepts no liability for the end use of the detail. For conditions not shown, consult Master Builders Solutions for review of specific detail.

Platinum CI Stucco Details

TYPICAL WINDOW HEAD (FLUSH)



- Ensure water-resistive barrier laps over the CI Weep Track flange.
- Provide end-dams at flashing terminations.
- Seal flashing drip edge to window frame.

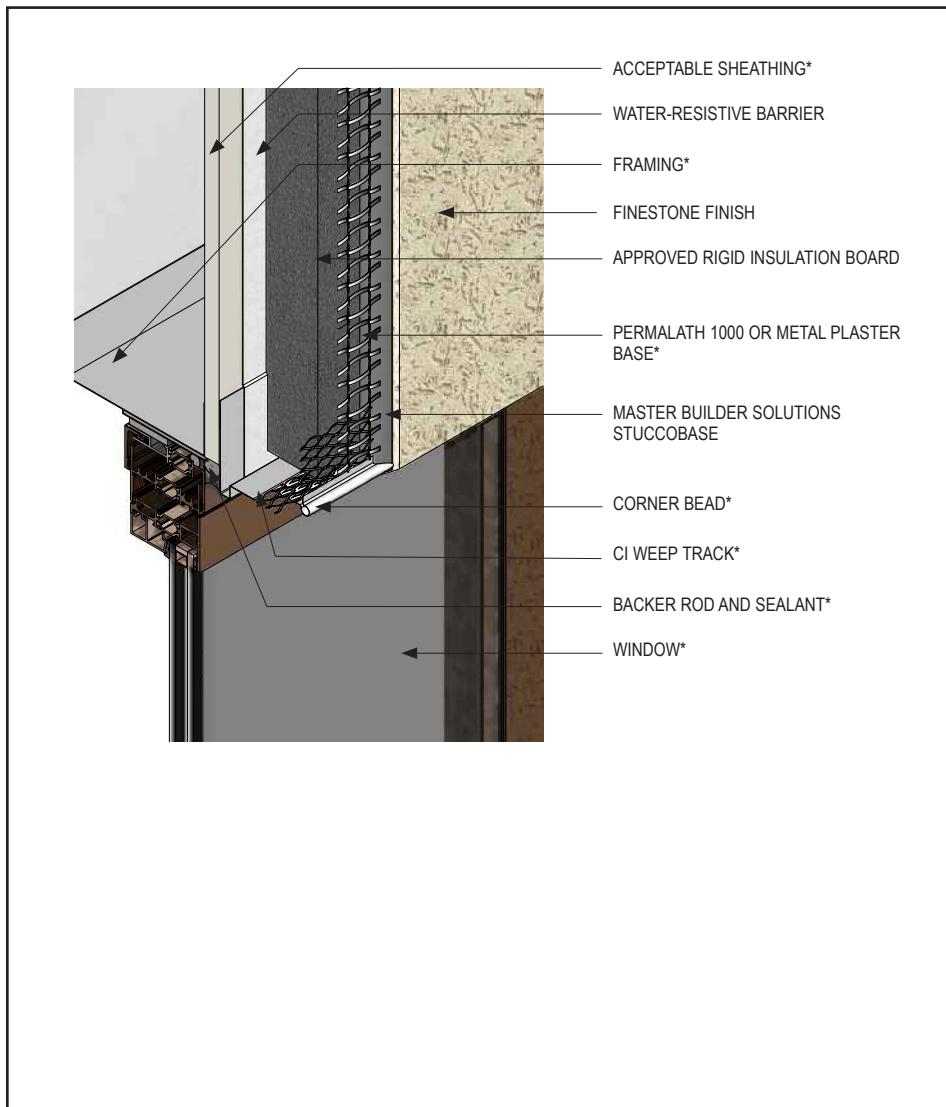
PCIS-14 2109

(*NOTE: BY OTHERS)

This detail represents Master Builders Solutions Construction Systems US, LLC (hereinafter Master Builders Solutions) latest recommendations. It is presented in good faith by Master Builders Solutions. The detail is subject to change without notice. Master Builders Solutions accepts no liability for the end use of the detail. For conditions not shown, consult Master Builders Solutions for review of specific detail.

Platinum CI Stucco Details

TYPICAL WINDOW HEAD (RECESSED)



- Ensure water-resistive barrier laps over the CI Weep Track flange.

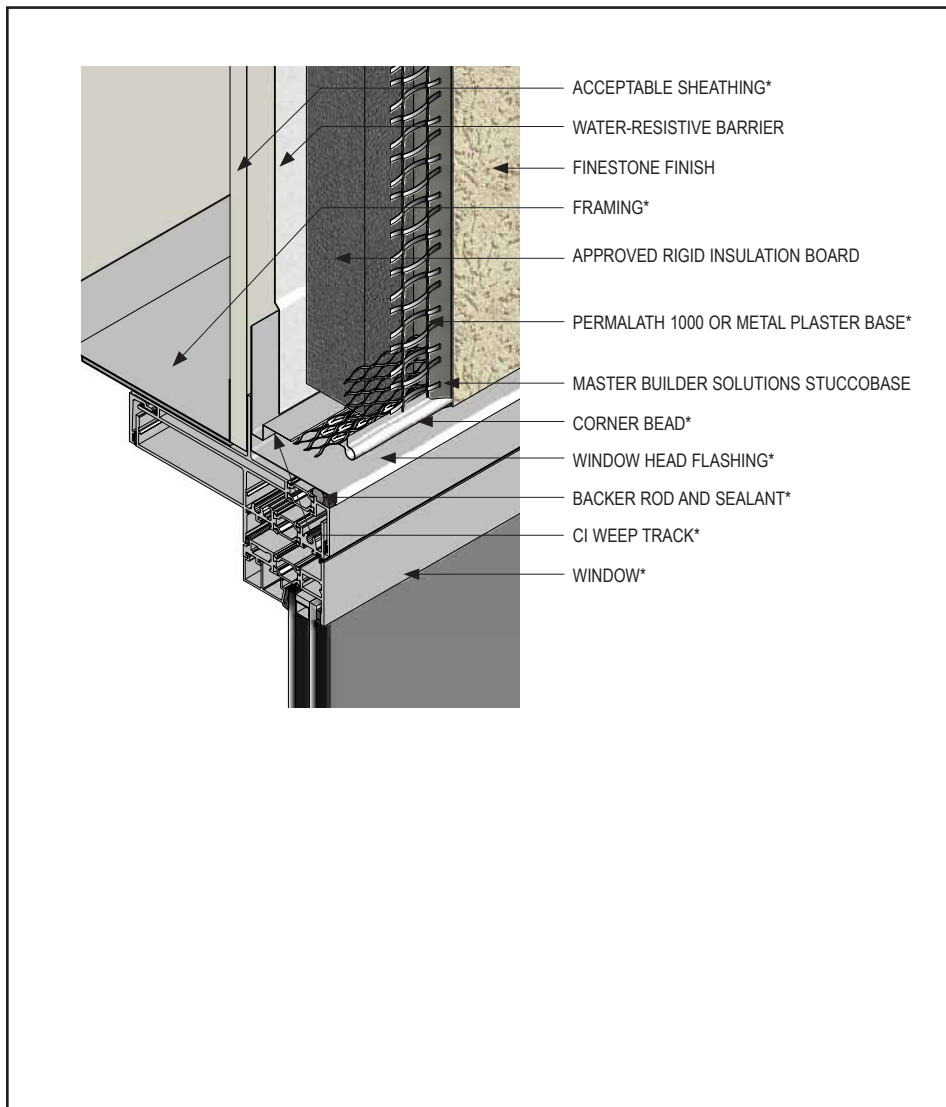
PCIS-15 2109

(*NOTE: BY OTHERS)

This detail represents Master Builders Solutions Construction Systems US, LLC (hereinafter Master Builders Solutions) latest recommendations. It is presented in good faith by Master Builders Solutions. The detail is subject to change without notice. Master Builders Solutions accepts no liability for the end use of the detail. For conditions not shown, consult Master Builders Solutions for review of specific detail.

Platinum CI Stucco Details

TYPICAL FLANGED WINDOW HEAD



- As recommended by window manufacturer, apply sealant to back of window flange at head prior to installation of window.
- Ensure water-resistive barrier laps over the CI Weep Track flange.
- Provide end-dams at flashing terminations.
- Seal flashing drip edge to window frame.

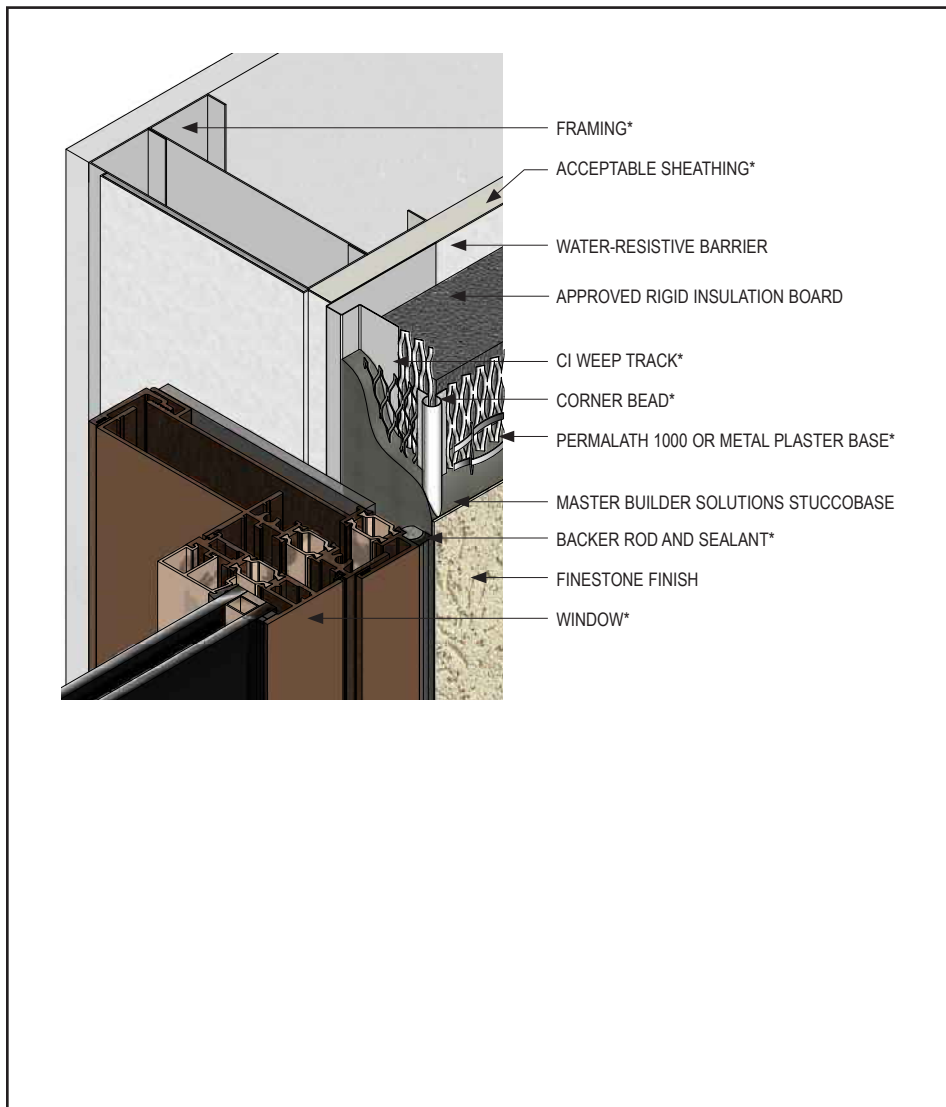
PCIS-16 2109

(*NOTE: BY OTHERS)

This detail represents Master Builders Solutions Construction Systems US, LLC (hereinafter Master Builders Solutions) latest recommendations. It is presented in good faith by Master Builders Solutions. The detail is subject to change without notice. Master Builders Solutions accepts no liability for the end use of the detail. For conditions not shown, consult Master Builders Solutions for review of specific detail.

Platinum CI Stucco Details

TYPICAL WINDOW JAMB (FLUSH)



- Ensure water-resistive barrier is properly applied into rough opening in accordance with water-resistive barrier manufacturer application guidelines.
- Do not apply finish into joint to receive sealant.
- Use non-hole punched version of CI Weep Track on jambs.

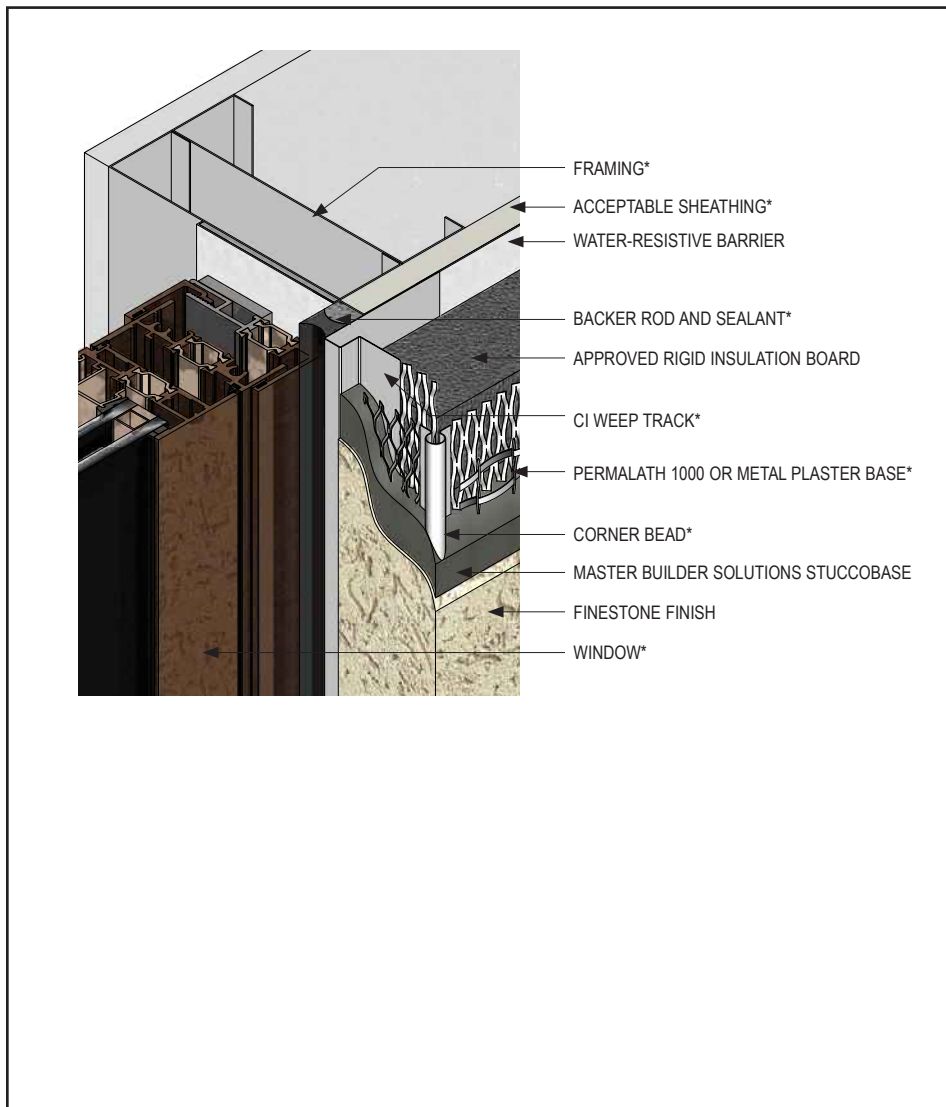
PCIS-17 2109

(*NOTE: BY OTHERS)

This detail represents Master Builders Solutions Construction Systems US, LLC (hereinafter Master Builders Solutions) latest recommendations. It is presented in good faith by Master Builders Solutions. The detail is subject to change without notice. Master Builders Solutions accepts no liability for the end use of the detail. For conditions not shown, consult Master Builders Solutions for review of specific detail.

Platinum CI Stucco Details

TYPICAL WINDOW JAMB (RECESSED)



- Ensure water-resistive barrier is properly applied into rough opening in accordance with water-resistive barrier manufacturer application guidelines.
- Use non-hole punched version of CI Weep Track on jambs.

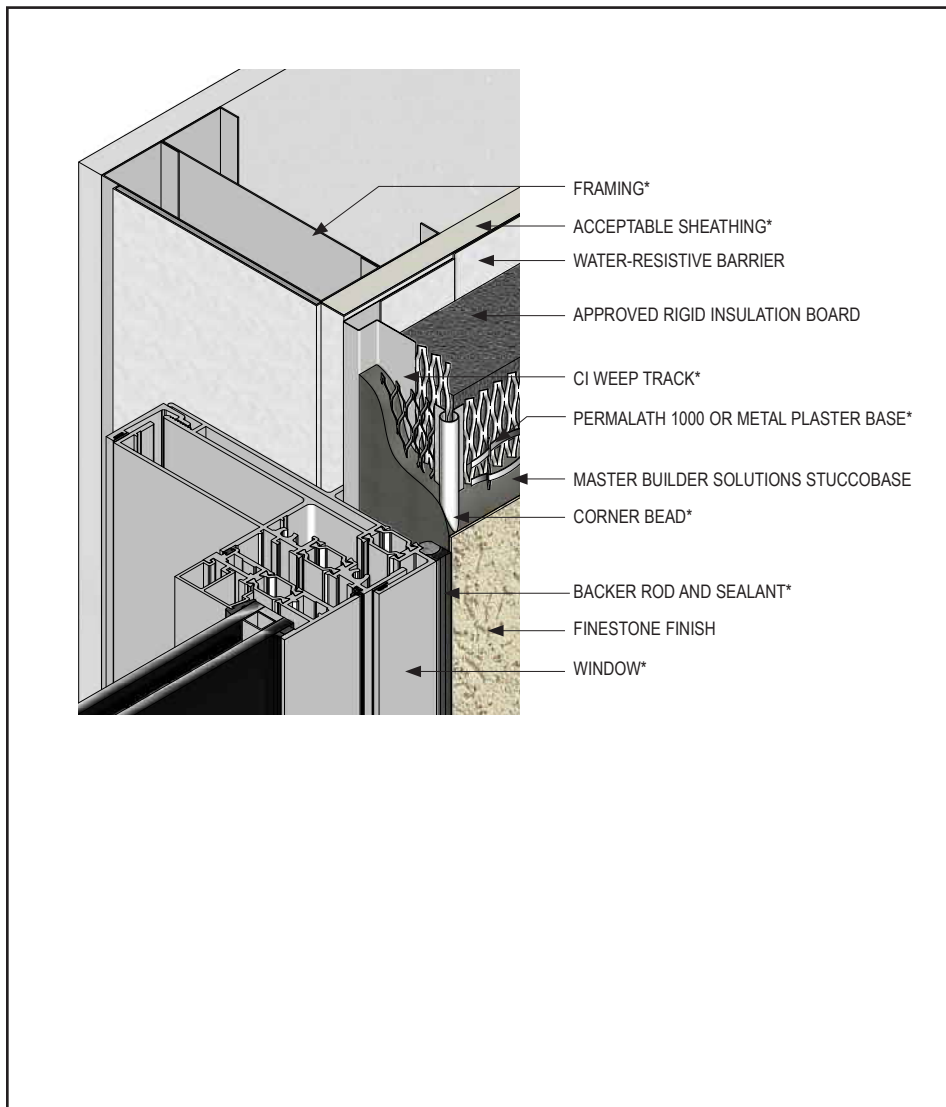
PCIS-18 2109

(*NOTE: BY OTHERS)

This detail represents Master Builders Solutions Construction Systems US, LLC (hereinafter Master Builders Solutions) latest recommendations. It is presented in good faith by Master Builders Solutions. The detail is subject to change without notice. Master Builders Solutions accepts no liability for the end use of the detail. For conditions not shown, consult Master Builders Solutions for review of specific detail.

Platinum CI Stucco Details

TYPICAL FLANGED WINDOW JAMB



- Ensure water-resistive barrier is properly applied into rough opening in accordance with water-resistive barrier manufacturer application guidelines.
- As recommended by window manufacturer, apply sealant to back of window flange at jamb prior to installation of window.
- Use non-hole punched version of CI Weep Track on jambs.

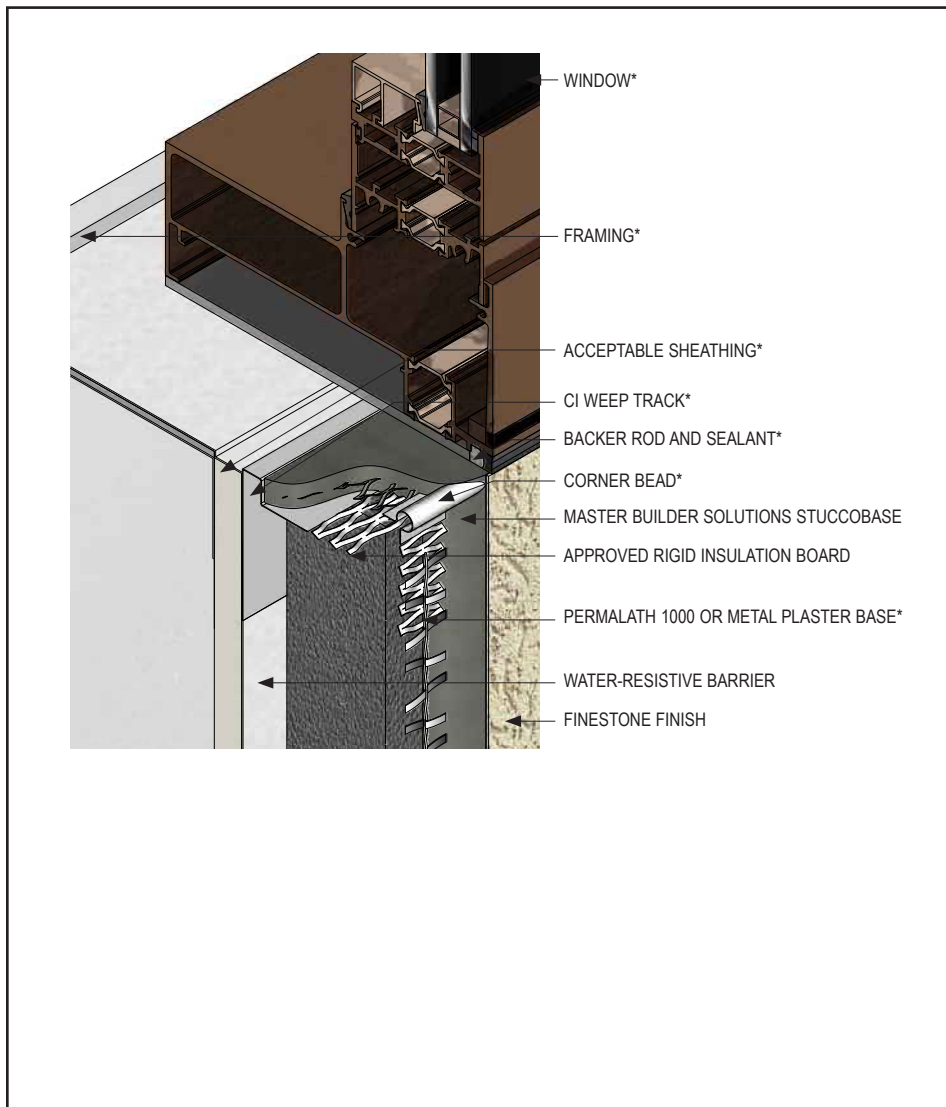
PCIS-19 2109

(*NOTE: BY OTHERS)

This detail represents Master Builders Solutions Construction Systems US, LLC (hereinafter Master Builders Solutions) latest recommendations. It is presented in good faith by Master Builders Solutions. The detail is subject to change without notice. Master Builders Solutions accepts no liability for the end use of the detail. For conditions not shown, consult Master Builders Solutions for review of specific detail.

Platinum CI Stucco Details

TYPICAL WINDOW SILL (FLUSH)



- Ensure water-resistive barrier is properly applied into rough opening in accordance with water-resistive barrier manufacturer application guidelines.
- Do not apply finish into joint to receive sealant.
- Use non-hole punched version of CI Weep Track on sill.

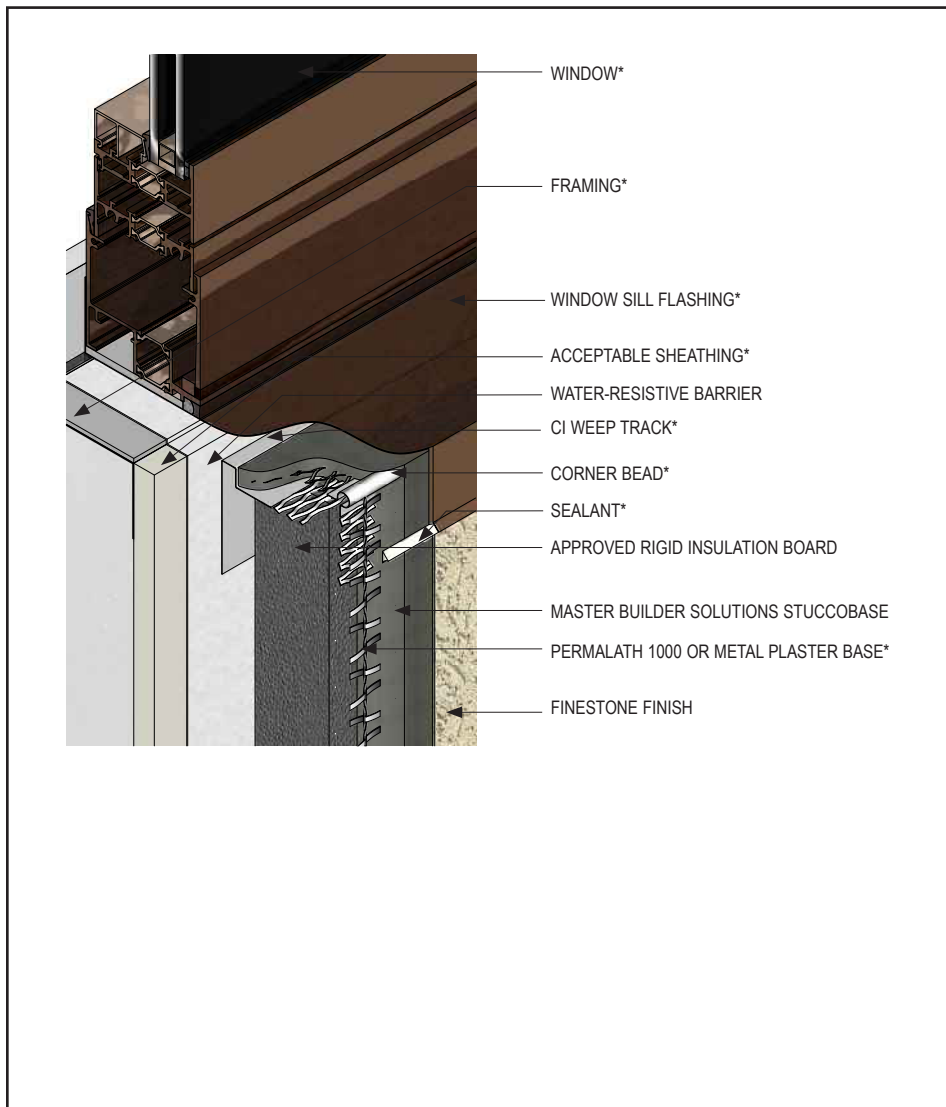
PCIS-20 2109

(*NOTE: BY OTHERS)

This detail represents Master Builders Solutions Construction Systems US, LLC (hereinafter Master Builders Solutions) latest recommendations. It is presented in good faith by Master Builders Solutions. The detail is subject to change without notice. Master Builders Solutions accepts no liability for the end use of the detail. For conditions not shown, consult Master Builders Solutions for review of specific detail.

Platinum CI Stucco Details

TYPICAL WINDOW SILL (RECESSED)



- Ensure water-resistive barrier is properly applied into rough opening in accordance with water-resistive barrier manufacturer application guidelines.
- Use non-hole punched version of CI Weep Track on sill.

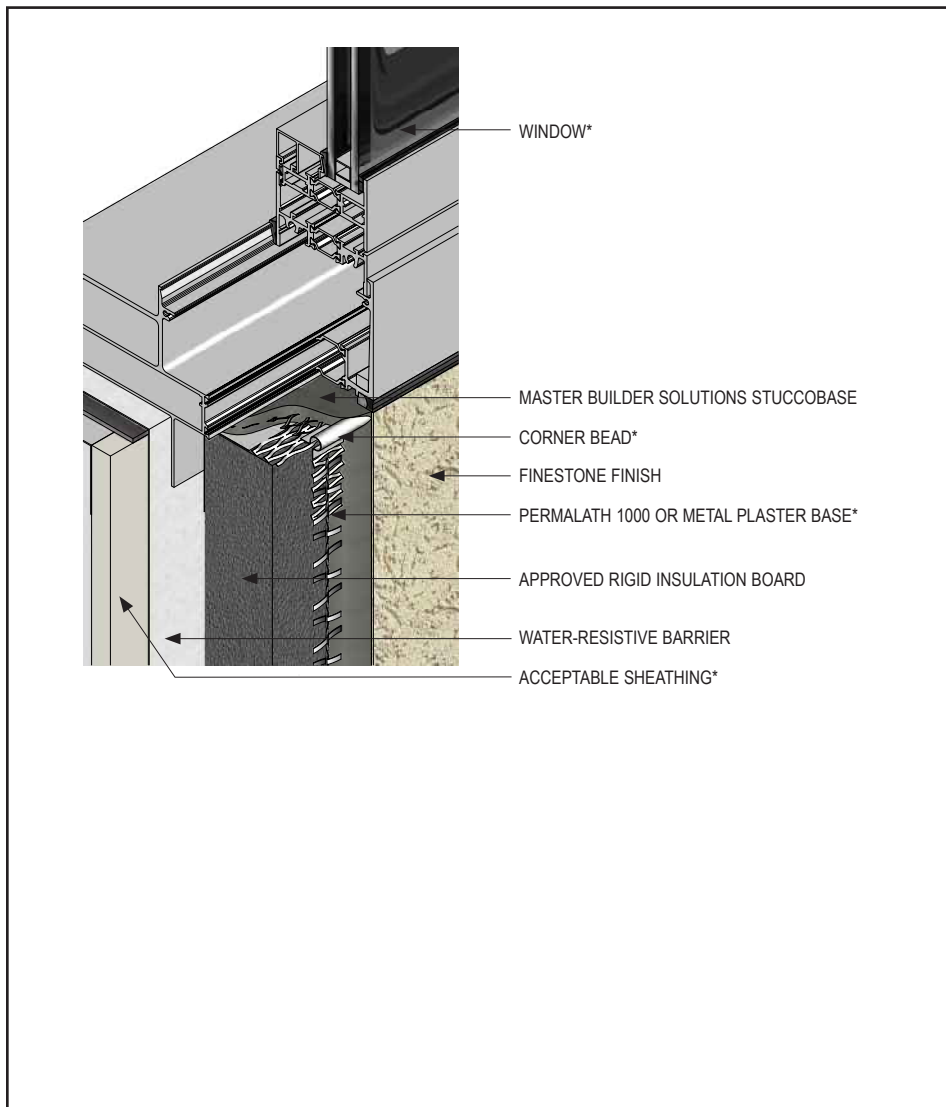
PCIS-21 2109

(*NOTE: BY OTHERS)

This detail represents Master Builders Solutions Construction Systems US, LLC (hereinafter Master Builders Solutions) latest recommendations. It is presented in good faith by Master Builders Solutions. The detail is subject to change without notice. Master Builders Solutions accepts no liability for the end use of the detail. For conditions not shown, consult Master Builders Solutions for review of specific detail.

Platinum CI Stucco Details

TYPICAL FLANGED WINDOW SILL



- Ensure water-resistive barrier is properly applied into rough opening in accordance with water-resistive barrier manufacturer application guidelines.
- Do not seal window sill flange unless recommended by window manufacturer.
- Use non-hole punched version of CI Weep Track on sill.

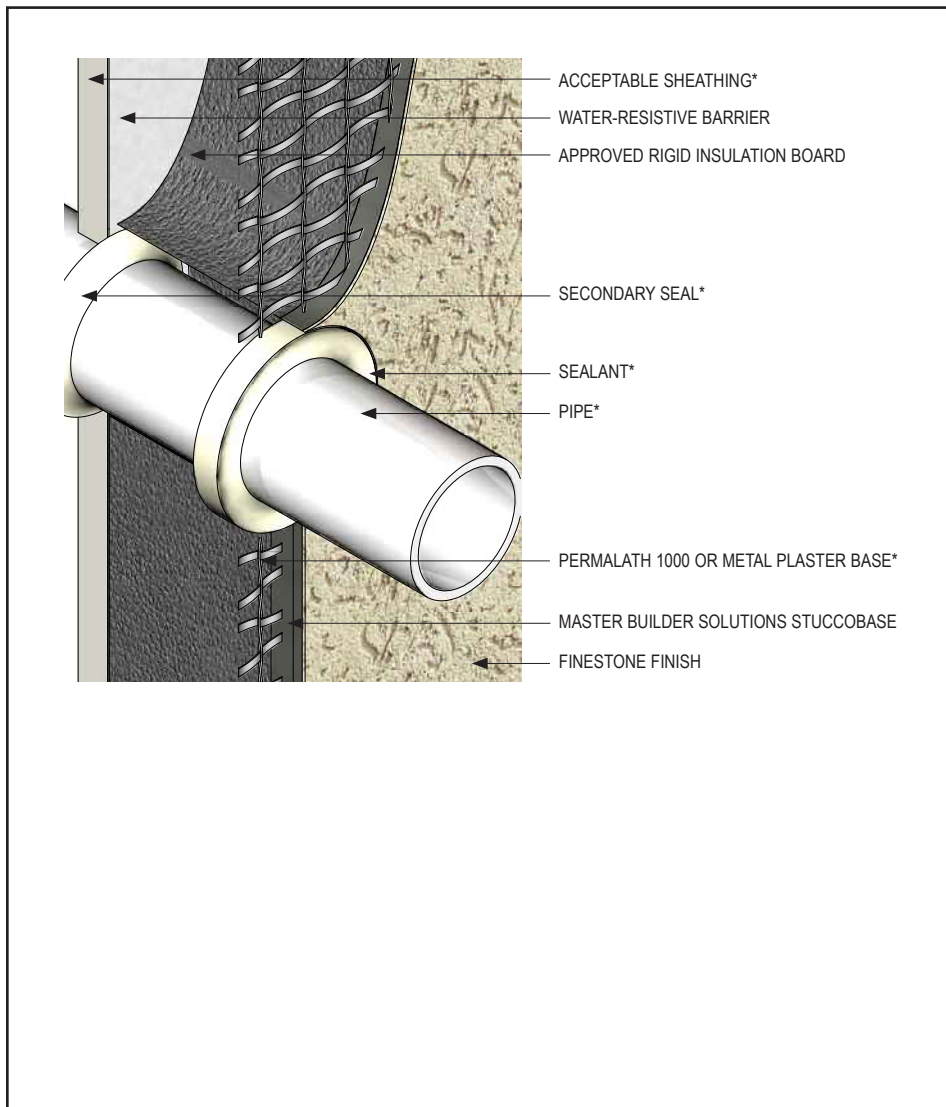
PCIS-22 2109

(*NOTE: BY OTHERS)

This detail represents Master Builders Solutions Construction Systems US, LLC (hereinafter Master Builders Solutions) latest recommendations. It is presented in good faith by Master Builders Solutions. The detail is subject to change without notice. Master Builders Solutions accepts no liability for the end use of the detail. For conditions not shown, consult Master Builders Solutions for review of specific detail.

Platinum CI Stucco Details

TYPICAL PIPE PENETRATION



- Ensure all penetrations through the Platinum CI Stucco system are properly sealed.

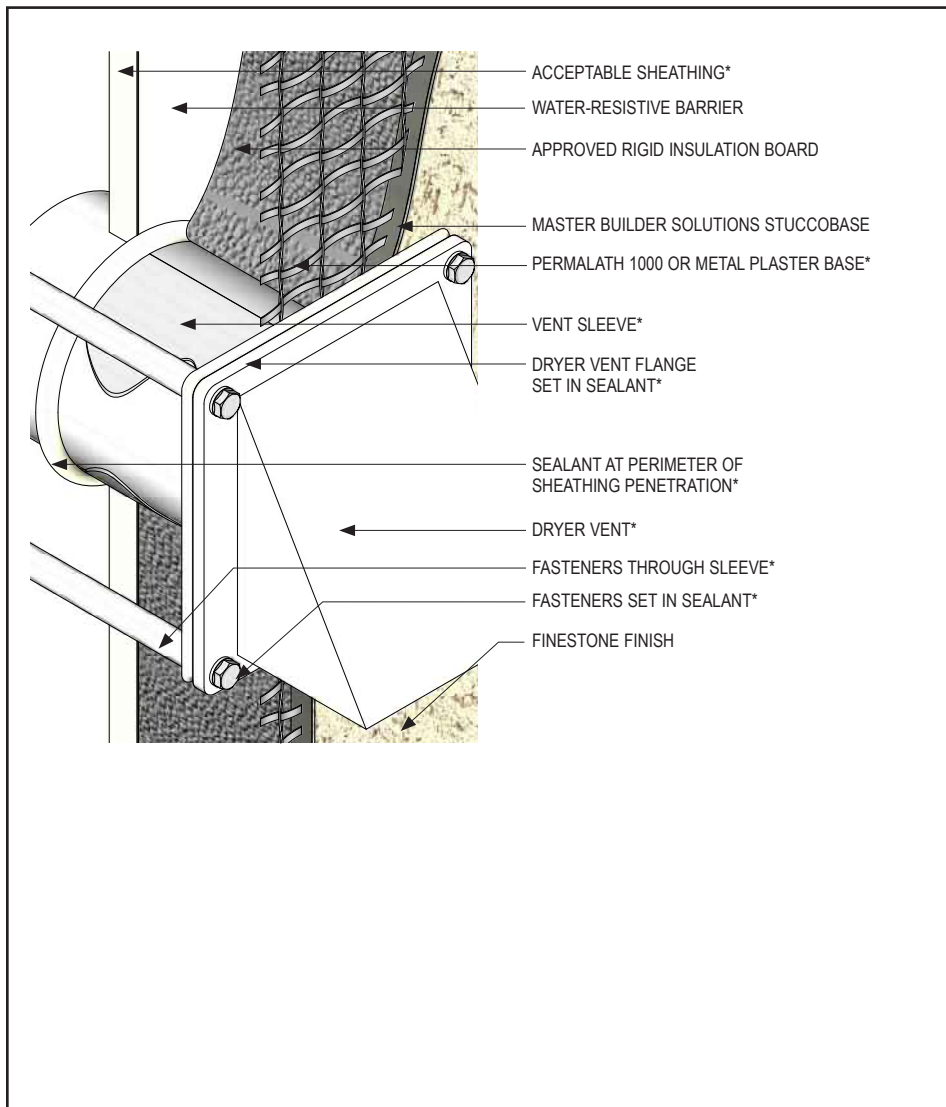
PCIS-23 2109

(*NOTE: BY OTHERS)

This detail represents Master Builders Solutions Construction Systems US, LLC (hereinafter Master Builders Solutions) latest recommendations. It is presented in good faith by Master Builders Solutions. The detail is subject to change without notice. Master Builders Solutions accepts no liability for the end use of the detail. For conditions not shown, consult Master Builders Solutions for review of specific detail.

Platinum CI Stucco Details

TYPICAL DRYER VENT



- Ensure all fastener penetrations through the Platinum CI Stucco system are properly sealed.

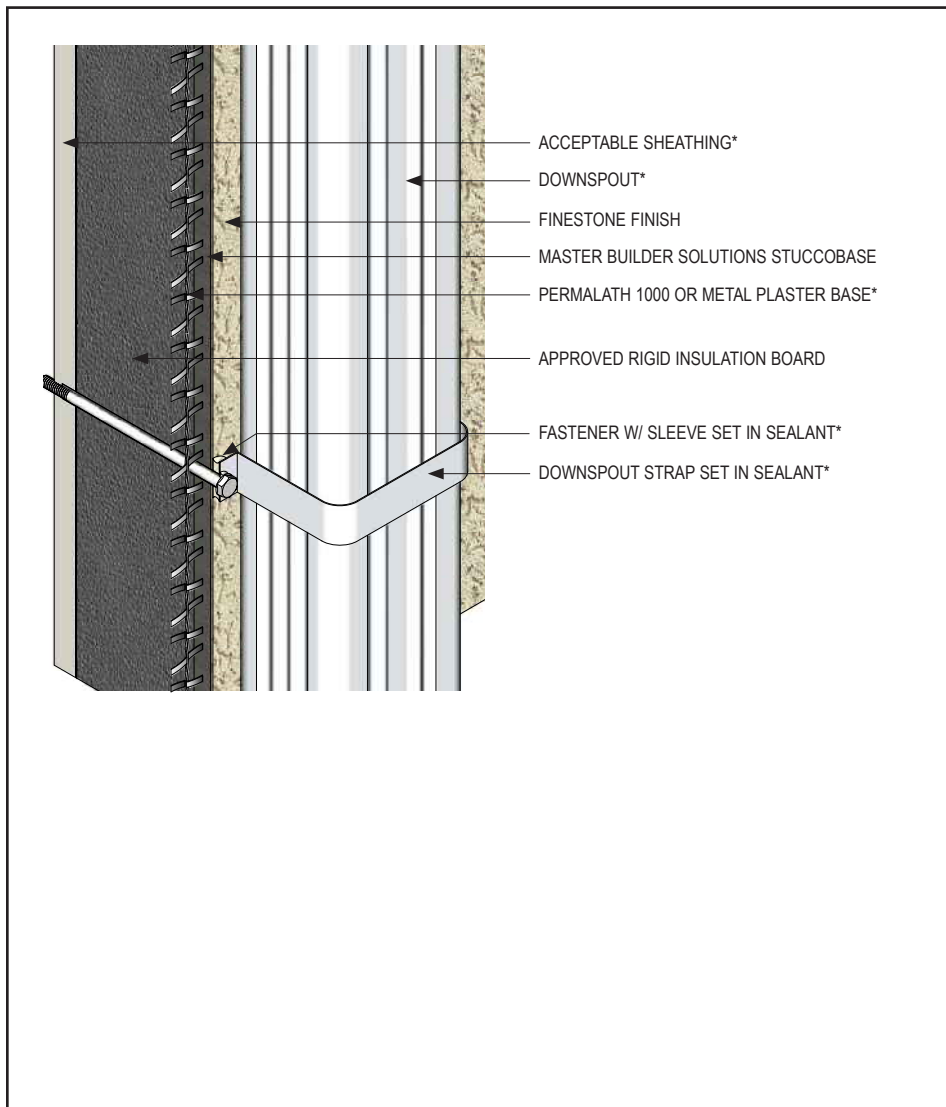
PCIS-24 2109

(*NOTE: BY OTHERS)

This detail represents Master Builders Solutions Construction Systems US, LLC (hereinafter Master Builders Solutions) latest recommendations. It is presented in good faith by Master Builders Solutions. The detail is subject to change without notice. Master Builders Solutions accepts no liability for the end use of the detail. For conditions not shown, consult Master Builders Solutions for review of specific detail.

Platinum CI Stucco Details

TYPICAL DOWNSPOUT



- Ensure all fastener penetrations through the Platinum CI Stucco system are properly sealed.

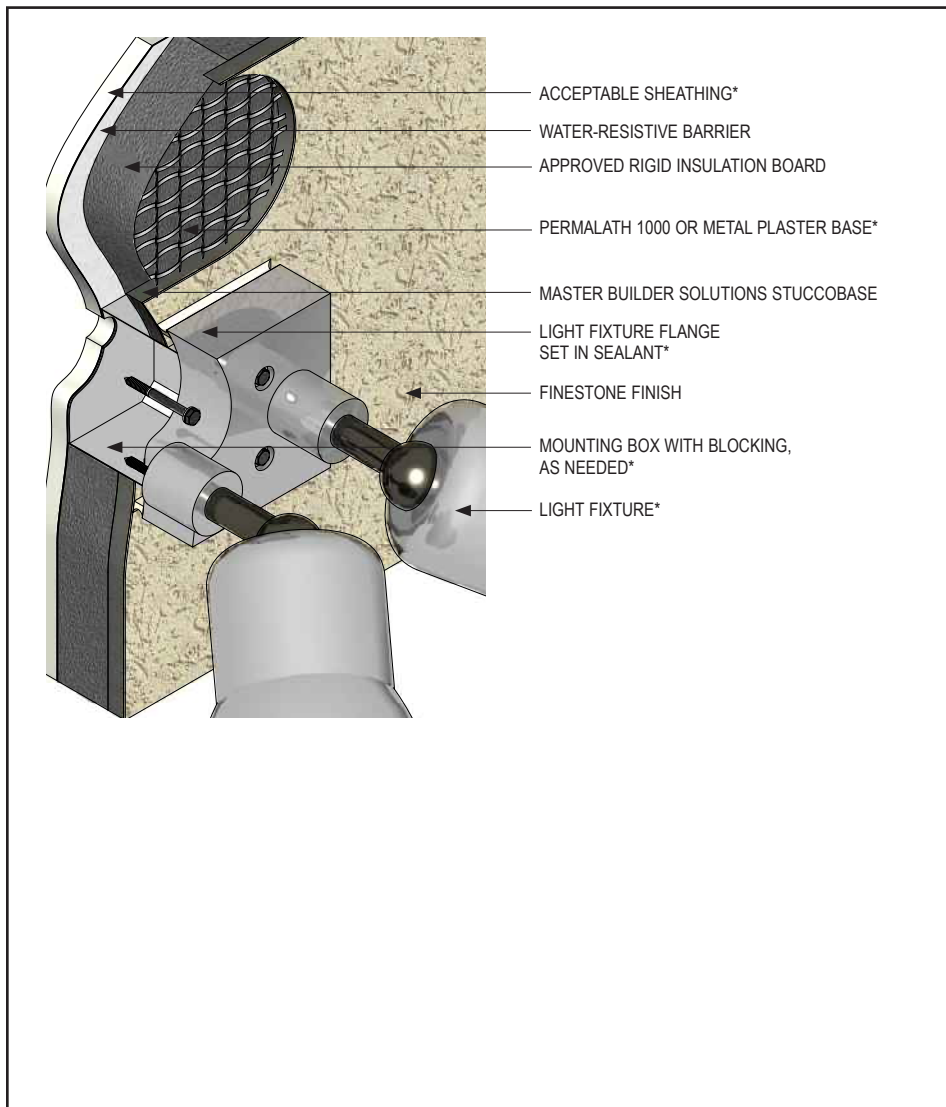
PCIS-25 2109

(*NOTE: BY OTHERS)

This detail represents Master Builders Solutions Construction Systems US, LLC (hereinafter Master Builders Solutions) latest recommendations. It is presented in good faith by Master Builders Solutions. The detail is subject to change without notice. Master Builders Solutions accepts no liability for the end use of the detail. For conditions not shown, consult Master Builders Solutions for review of specific detail.

Platinum CI Stucco Details

TYPICAL LIGHT FIXTURE



- Ensure all fastener penetrations through the Platinum CI Stucco system are properly sealed.

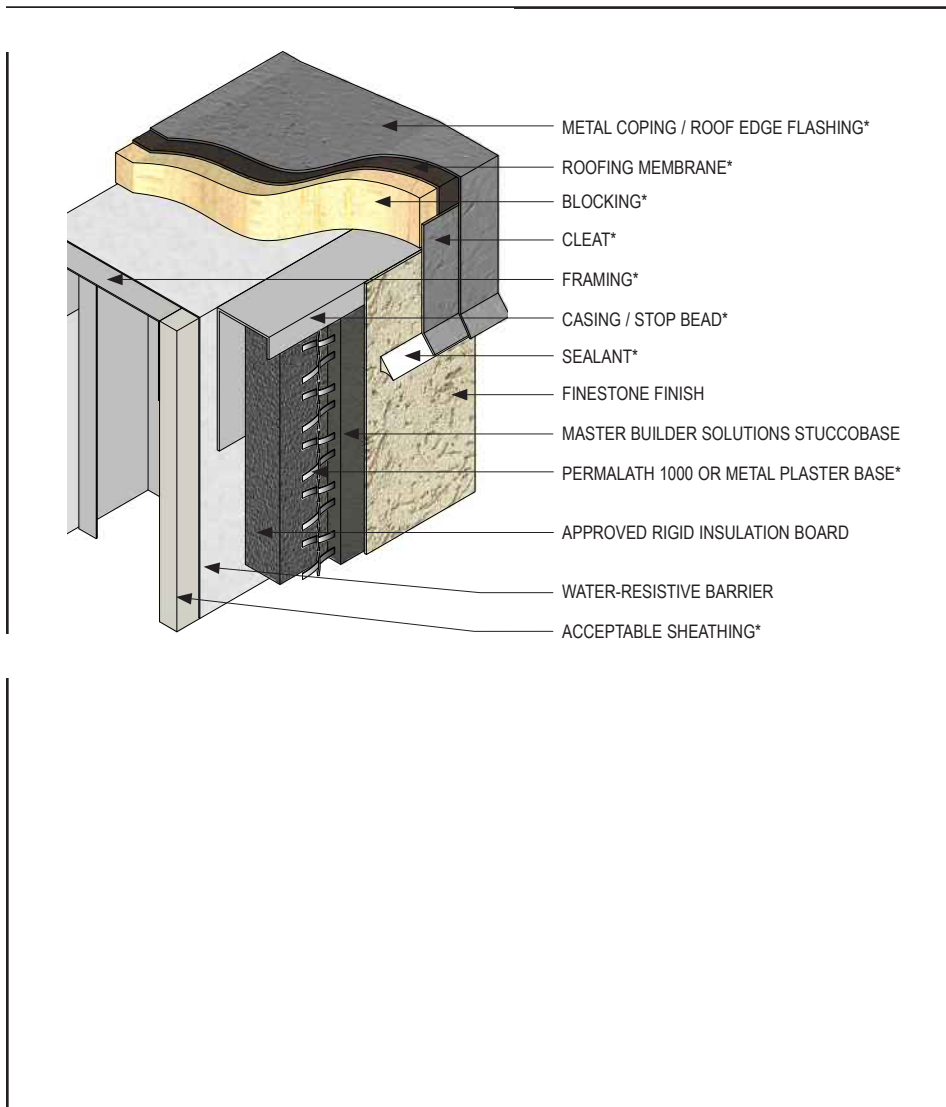
PCIS-26 2109

(*NOTE: BY OTHERS)

This detail represents Master Builders Solutions Construction Systems US, LLC (hereinafter Master Builders Solutions) latest recommendations. It is presented in good faith by Master Builders Solutions. The detail is subject to change without notice. Master Builders Solutions accepts no liability for the end use of the detail. For conditions not shown, consult Master Builders Solutions for review of specific detail.

Platinum CI Stucco Details

TYPICAL TERMINATION AT METAL COPING / ROOF EDGE FLASHING – OPTION 01



- It is recommended to lap coping or roof edge flashing over the Platinum CI Stucco system a minimum of 2" (50 mm) with drip edge sealed.

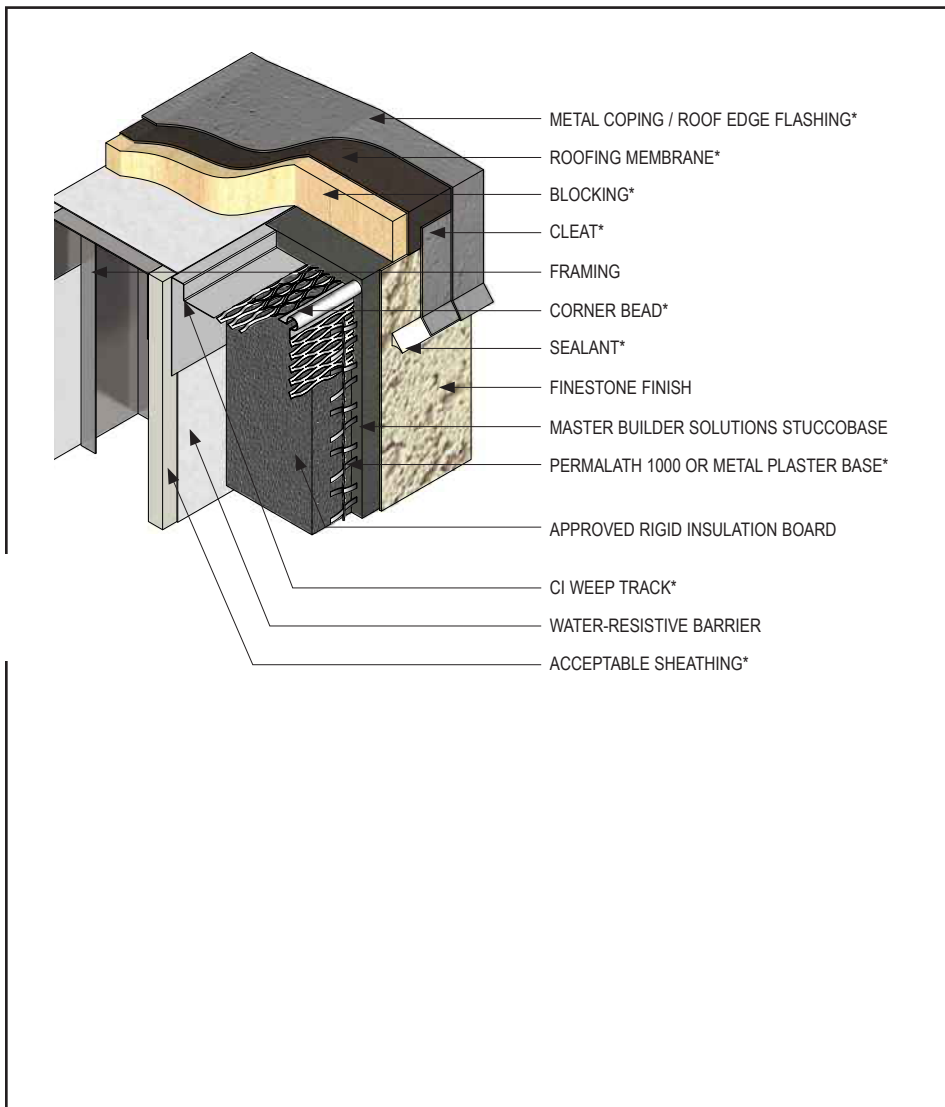
PCIS-27 2109

(*NOTE: BY OTHERS)

This detail represents Master Builders Solutions Construction Systems US, LLC (hereinafter Master Builders Solutions) latest recommendations. It is presented in good faith by Master Builders Solutions. The detail is subject to change without notice. Master Builders Solutions accepts no liability for the end use of the detail. For conditions not shown, consult Master Builders Solutions for review of specific detail.

Platinum CI Stucco Details

TYPICAL TERMINATION AT METAL COPING / ROOF EDGE FLASHING – OPTION 02



- It is recommended to lap coping or roof edge flashing over the Platinum CI Stucco system a minimum of 2" (50 mm) with drip edge sealed.

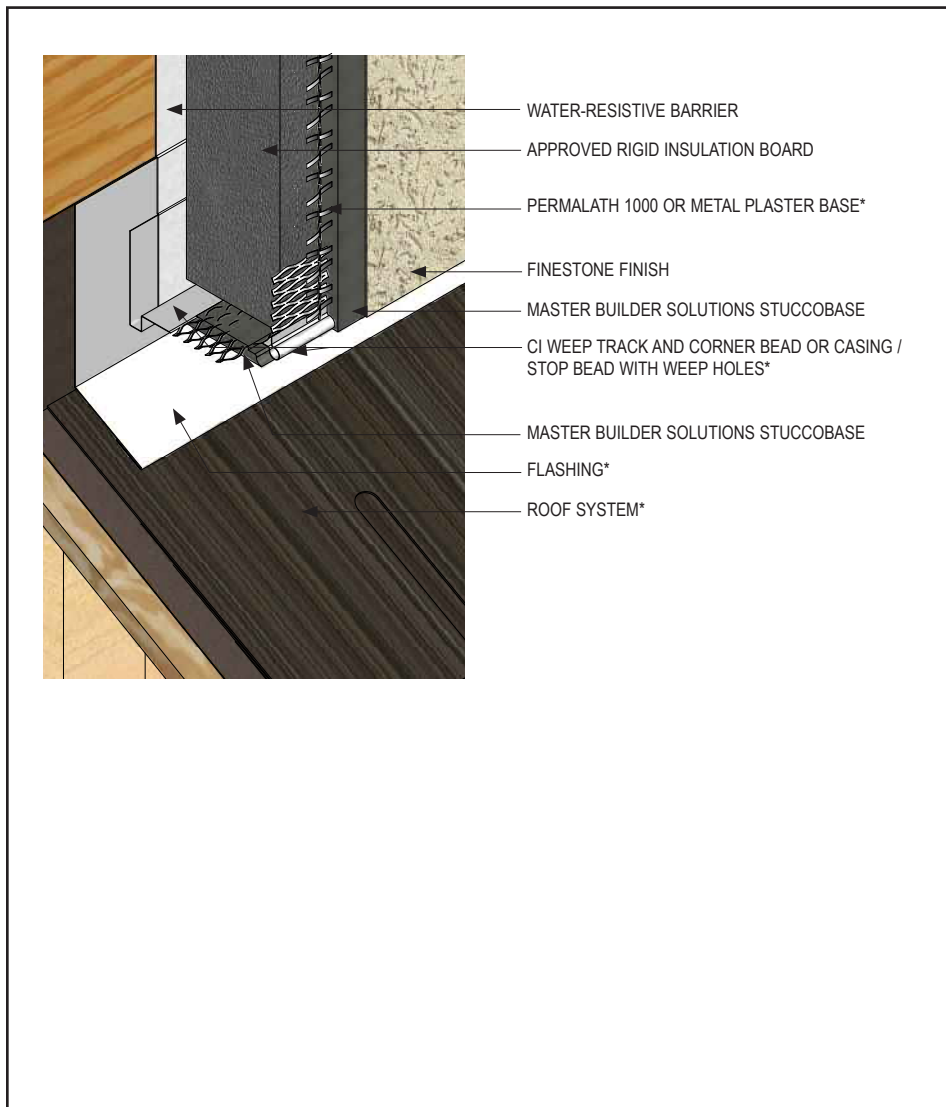
PCIS-28 2109

(*NOTE: BY OTHERS)

This detail represents Master Builders Solutions Construction Systems US, LLC (hereinafter Master Builders Solutions) latest recommendations. It is presented in good faith by Master Builders Solutions. The detail is subject to change without notice. Master Builders Solutions accepts no liability for the end use of the detail. For conditions not shown, consult Master Builders Solutions for review of specific detail.

Platinum CI Stucco Details

TYPICAL FLASHING / TERMINATION AT ROOF



- Ensure water-resistive barrier laps over the CI Weep Track flange.
- Terminate Platinum CI Stucco system a minimum of 2" (50 mm) above sloped roof.

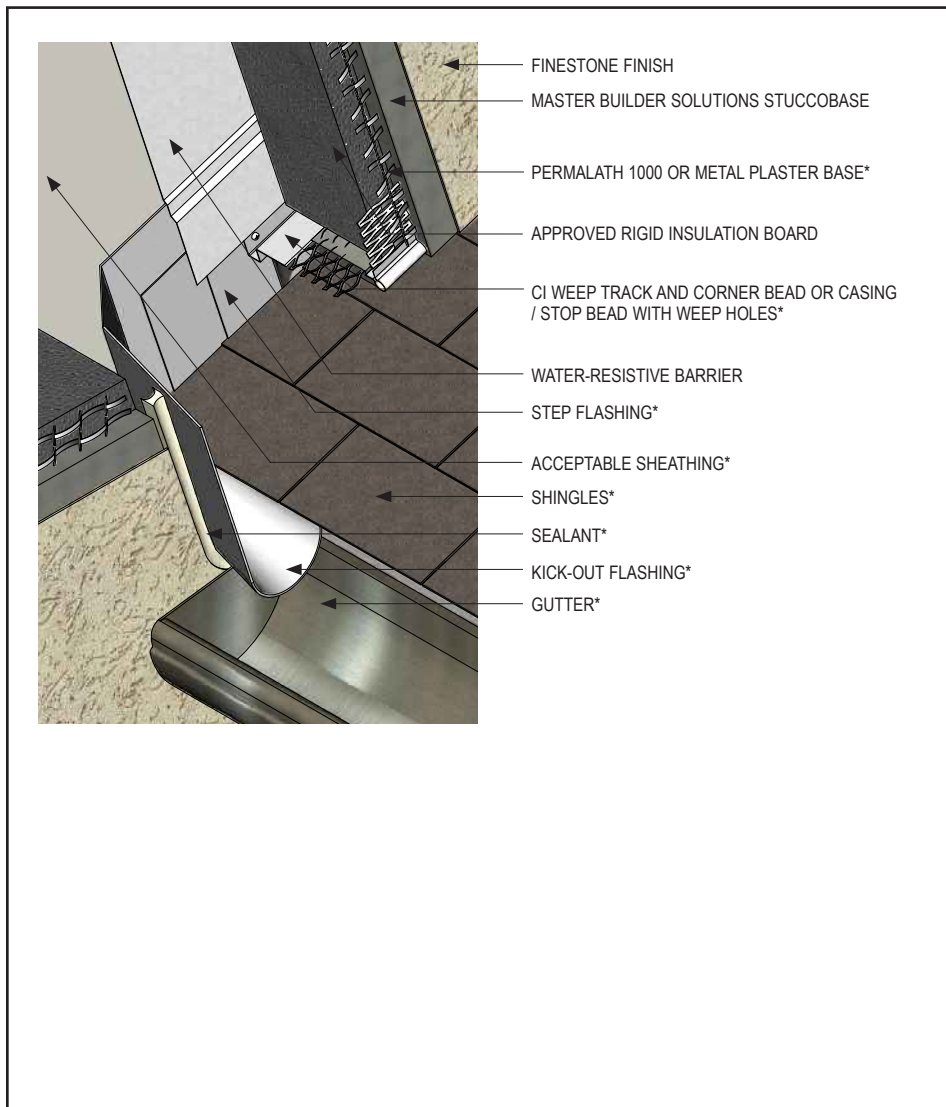
PCIS-29 2109

(*NOTE: BY OTHERS)

This detail represents Master Builders Solutions Construction Systems US, LLC (hereinafter Master Builders Solutions) latest recommendations. It is presented in good faith by Master Builders Solutions. The detail is subject to change without notice. Master Builders Solutions accepts no liability for the end use of the detail. For conditions not shown, consult Master Builders Solutions for review of specific detail.

Platinum CI Stucco Details

TYPICAL KICK-OUT FLASHING



- Ensure water-resistive barrier laps over the CI Weep Track flange.
- Terminate Platinum CI Stucco system a minimum of 2" (50 mm) above sloped roof.
- Extend step flashing 2" (50 mm) behind Platinum CI Stucco system.
- Kickout flashing: sealed or soldered seams, recommended minimum 4" (100 mm) in height, extend 2" (50 mm) from wall and angled to direct water into gutter/away from wall surface.

PCIS-30 2109

(*NOTE: BY OTHERS)

This detail represents Master Builders Solutions Construction Systems US, LLC (hereinafter Master Builders Solutions) latest recommendations. It is presented in good faith by Master Builders Solutions. The detail is subject to change without notice. Master Builders Solutions accepts no liability for the end use of the detail. For conditions not shown, consult Master Builders Solutions for review of specific detail.

Warranty

Master Builders Solutions Construction Systems US, LLC ("Master Builders") warrants this product to be free from manufacturing defects and to meet the technical properties on the current Technical Data Guide, if used as directed within shelf life. Satisfactory results depend not only on quality products but also upon many factors beyond our control. Master Builders MAKES NO OTHER WARRANTY OR GUARANTEE, EXPRESS OR IMPLIED, INCLUDING WARRANTIES OF MERCHANTABILITY OR FITNESS FOR A PARTICULAR PURPOSE WITH RESPECT TO ITS PRODUCTS. The sole and exclusive remedy of Purchaser for any claim concerning this product, including but not limited to, claims alleging breach of warranty, negligence, strict liability or otherwise, is shipment to purchaser of product equal to the amount of product that fails to meet this warranty or refund of the original purchase price of product that fails to meet this warranty, at the sole option of Master Builders. Any claims concerning this product must be received in writing within one (1) year from the date of shipment and any claims not presented within that period are waived by Purchaser. Master Builders WILL NOT BE RESPONSIBLE FOR ANY SPECIAL, INCIDENTAL, CONSEQUENTIAL (INCLUDING LOST PROFITS) OR PUNITIVE DAMAGES OF ANY KIND.

Purchaser must determine the suitability of the products for the intended use and assumes all risks and liabilities in connection therewith. This information and all further technical advice are based on Master Builders' present knowledge and experience. However, Master Builders assumes no liability for providing such information and advice including the extent to which such information and advice may relate to existing third party intellectual property rights, especially patent rights, nor shall any legal relationship be created by or arise from the provision of such information and advice. Master Builders reserves the right to make any changes according to technological progress or further developments. The Purchaser of the Product(s) must test the product(s) for suitability for the intended application and purpose before proceeding with a full application of the product(s). Performance of the product described herein should be verified by testing and carried out by qualified experts.

For professional use only. Not for sale to or use by the general public.

For the most current version of this literature, please visit our website at finestone.master-builders-solutions.com/en.

Master Builders Solutions Construction Systems US, LLC

889 Valley Park Drive, Shakopee, MN 55379
finestone.master-builders-solutions.com/en

Customer Service +1 (800) 433-9517
Technical Service +1 (800) 589-1336