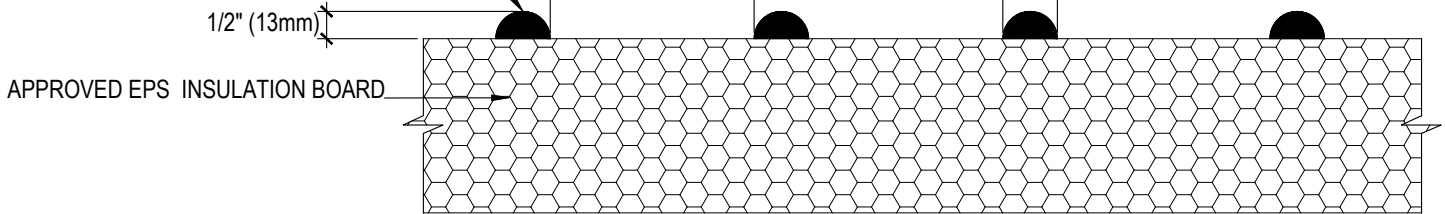


VERTICAL NOTCHES OF FINESTONE  
ADHESIVE / BASE COAT APPLIED TO  
APPROVED EPS INSULATION BOARD



REV 180203

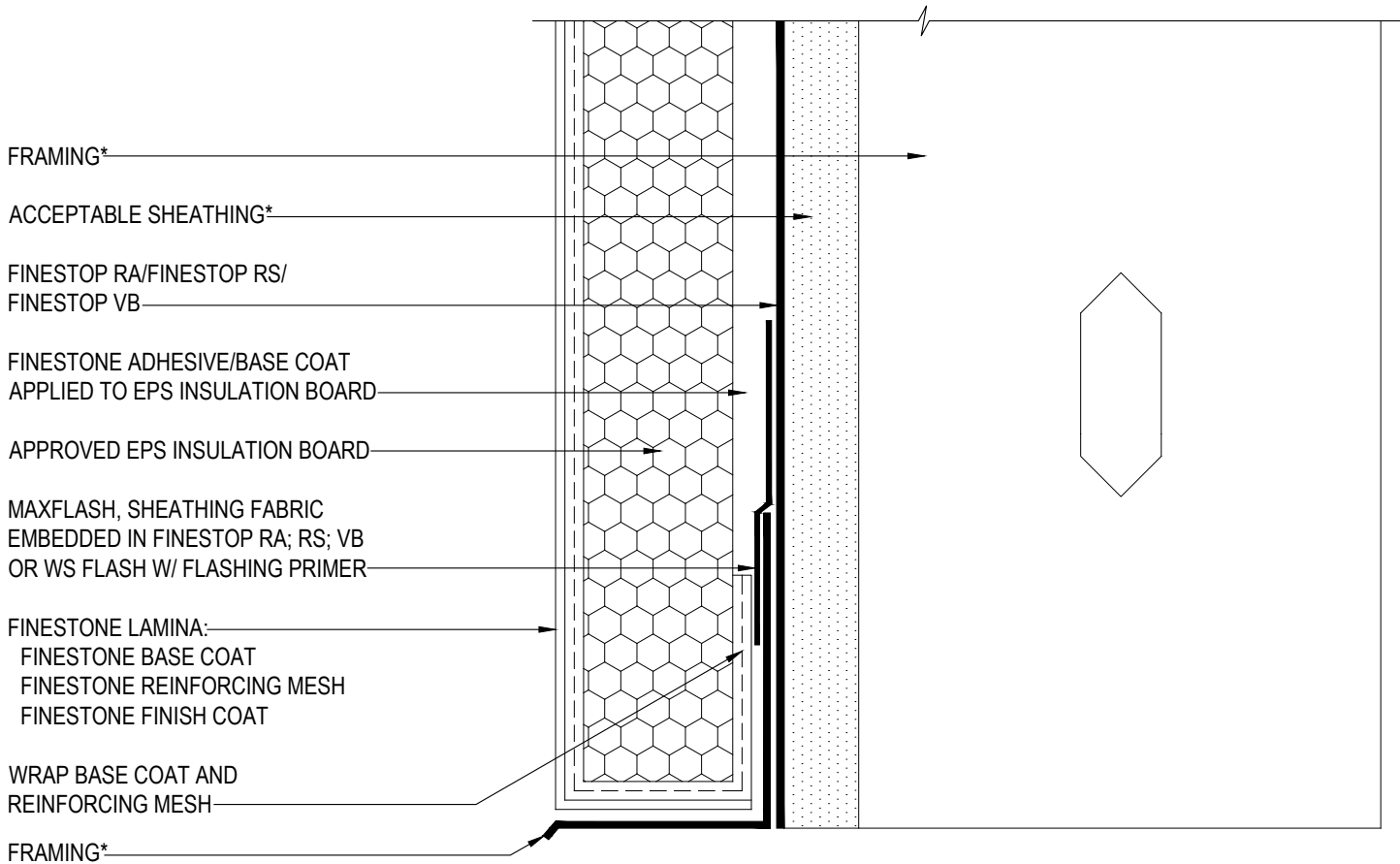
## TYPICAL CI-DCA PATTERN PEBBLETEx CI-DCA

SCALE: NTS

01

Structure, substrates, flashing, and other items which are not part of the BASF *Pebbletex* CI-DCA system are the responsibility of others. This detail is subject to change without notice. BASF Corporation - Wall Systems (herein after BASF Wall Systems) accepts no liability for the end use of this detail. For conditions not shown, consult BASF Wall Systems for review of specific detail.

**BASF**  
We create chemistry



\*BY OTHERS

REV 180203

## TYPICAL CI-DCA APPLICATION PEBBLETEx CI-DCA

SCALE: NTS

02

Structure, substrates, flashing, and other items which are not part of the BASF *Pebbletex* CI-DCA system are the responsibility of others. This detail is subject to change without notice. BASF Corporation - Wall Systems (herein after BASF Wall Systems) accepts no liability for the end use of this detail. For conditions not shown, consult BASF Wall Systems for review of specific detail.

**BASF**  
We create chemistry

CMU\*

FINESTOP RA/FINESTOP RS/  
FINESTOP VB

FINESTONE ADHESIVE/BASE COAT  
APPLIED TO EPS INSULATION BOARD

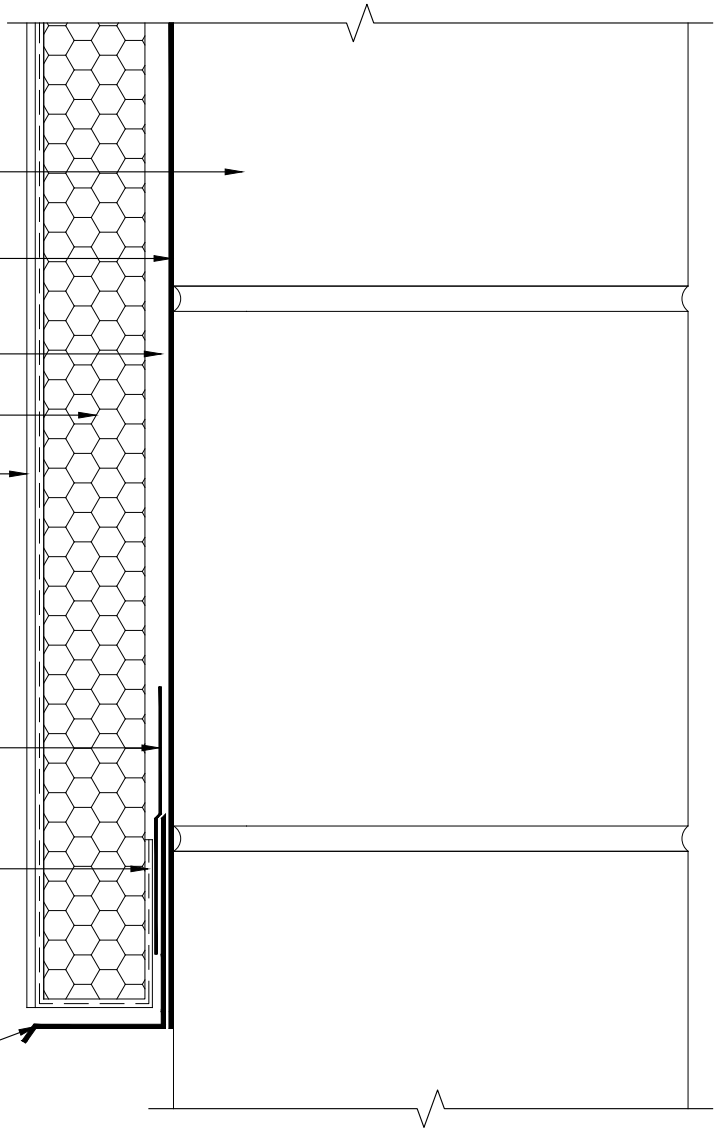
APPROVED EPS INSULATION BOARD

FINESTONE LAMINA:  
FINESTONE BASE COAT  
FINESTONE REINFORCING MESH  
FINESTONE FINISH COAT

MAXFLASH, SHEATHING FABRIC  
EMBEDDED IN FINESTOP RA; RS; VB,  
OR WS FLASH W/ FLASHING PRIMER

WRAP BASE COAT AND  
REINFORCING MESH

FLASHING\*



\*BY OTHERS

REV 180203

## TYPICAL APPLICATION OVER CMU PEBBLETEx CI-DCA

SCALE: NTS

**03**

Structure, substrates, flashing, and other items which are not part of the BASF *Pebbletex CI-DCA* system are the responsibility of others. This detail is subject to change without notice. BASF Corporation - Wall Systems (herein after BASF Wall Systems) accepts no liability for the end use of this detail. For conditions not shown, consult BASF Wall Systems for review of specific detail.

**BASF**  
We create chemistry

BRICK\*

FINESTOP RA/FINESTOP RS/  
FINESTOP VB

FINESTONE ADHESIVE/BASE COAT  
APPLIED TO EPS INSULATION BOARD

APPROVED EPS INSULATION BOARD

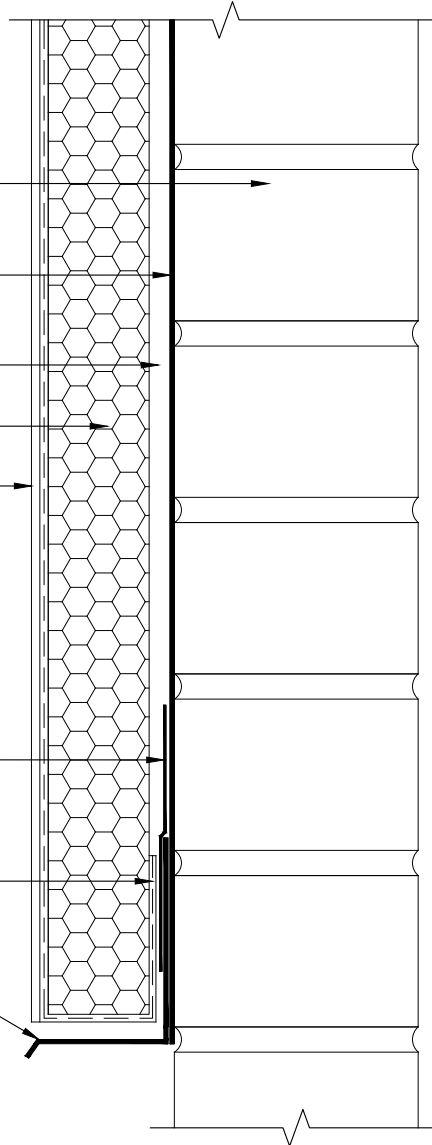
FINESTONE LAMINA:  
FINESTONE BASE COAT  
FINESTONE REINFORCING MESH  
FINESTONE FINISH COAT

MAXFLASH, SHEATHING FABRIC  
EMBEDDED IN FINESTOP RA; RS; VB,  
OR WS FLASH W/ FLASHING PRIMER

WRAP BASE COAT AND  
REINFORCING MESH

FLASHING\*

\*BY OTHERS



REV 180203

## TYPICAL APPLICATION OVER BRICK PEBBLETEX CI-DCA

SCALE: NTS

**04**

Structure, substrates, flashing, and other items which are not part of the BASF *Pebbletex CI-DCA* system are the responsibility of others. This detail is subject to change without notice. BASF Corporation - Wall Systems (herein after BASF Wall Systems) accepts no liability for the end use of this detail. For conditions not shown, consult BASF Wall Systems for review of specific detail.

**BASF**  
We create chemistry

FRAMING\*

ACCEPTABLE SHEATHING\*

FINESTOP RA/FINESTOP RS/  
FINESTOP VB

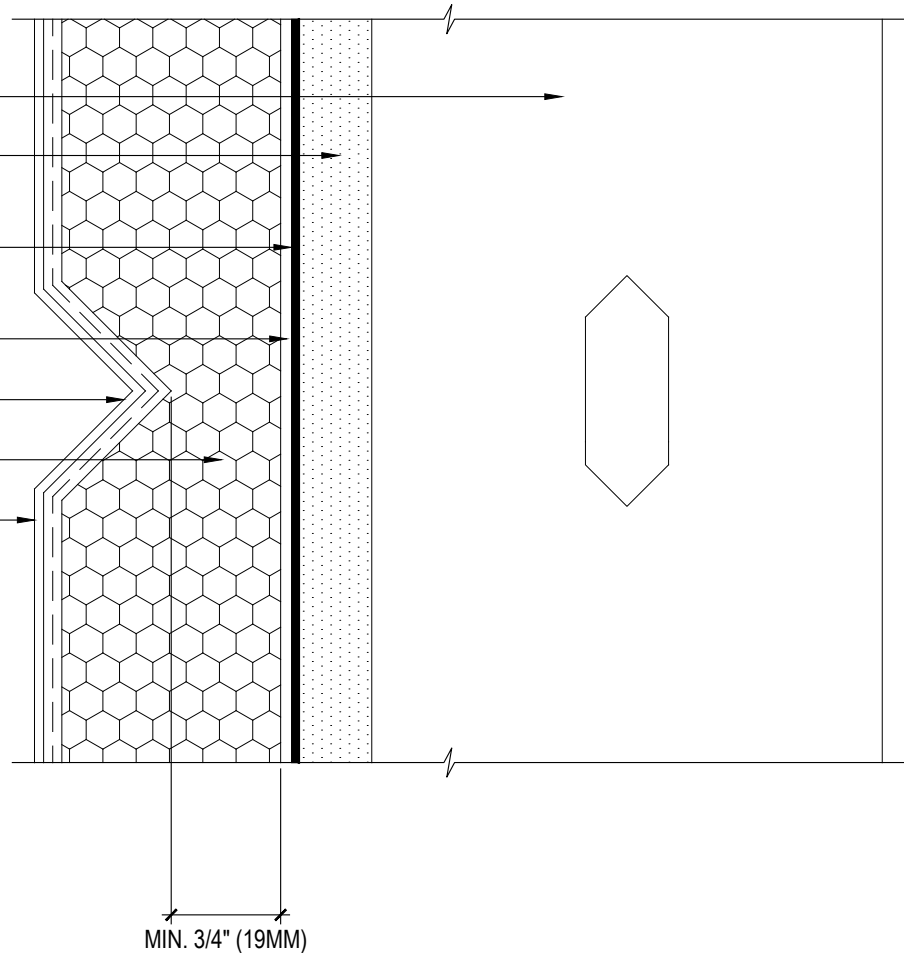
FINESTONE ADHESIVE/BASE COAT  
APPLIED TO EPS INSULATION BOARD

AESTHETIC REVEAL

APPROVED EPS INSULATION BOARD

FINESTONE LAMINA:  
FINESTONE BASE COAT  
FINESTONE REINFORCING MESH  
FINESTONE FINISH COAT

\*BY OTHERS



REV 180203

## TYPICAL AESTHETIC REVEAL PEBBLETEX CI-DCA

SCALE: NTS

05

Structure, substrates, flashing, and other items which are not part of the BASF *Pebbletex CI-DCA* system are the responsibility of others. This detail is subject to change without notice. BASF Corporation - Wall Systems (herein after BASF Wall Systems) accepts no liability for the end use of this detail. For conditions not shown, consult BASF Wall Systems for review of specific detail.

**BASF**  
We create chemistry

FRAMING\*

ACCEPTABLE SHEATHING\*

FINESTOP RA/FINESTOP RS/  
FINESTOP VB

FINESTONE ADHESIVE/ BASE COAT

APPROVED EPS INSULATION BOARD

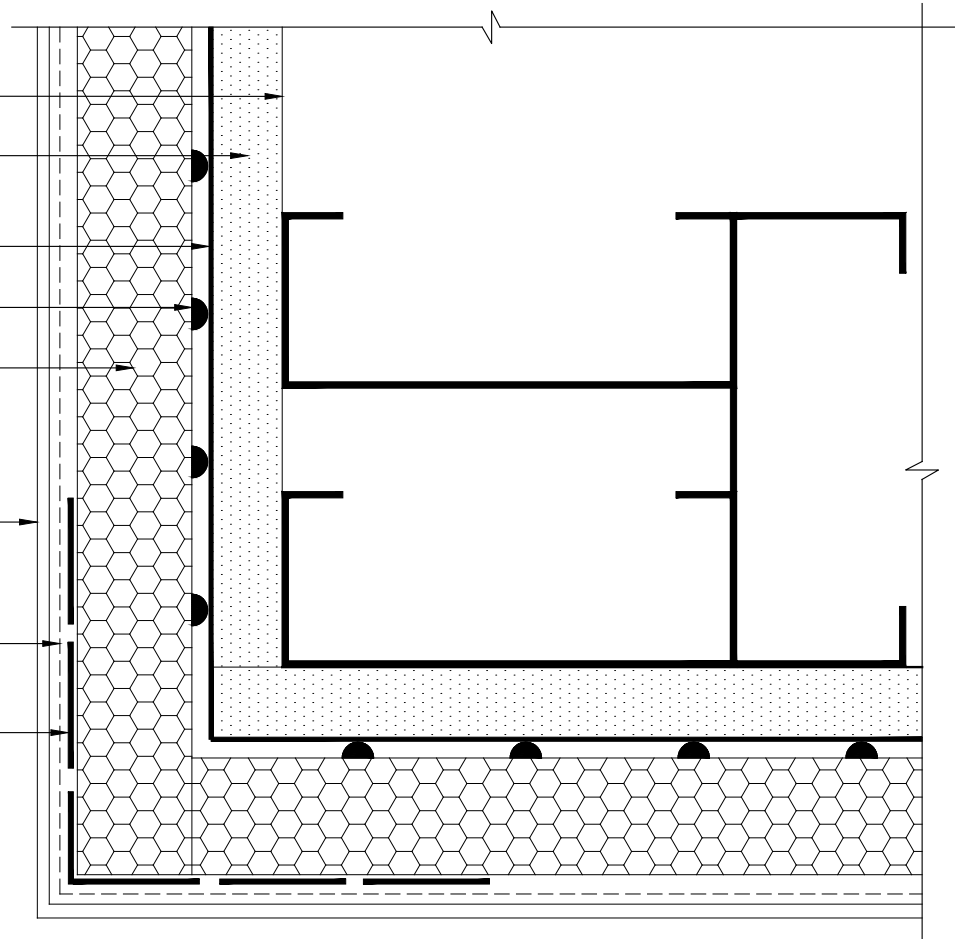
FINESTONE FINISH COAT

STANDARD MESH, INTERMEDIATE 6  
OR INTERMEDIATE 12 REINFORCING MESH  
EMBEDDED IN FINESTONE BASE COAT

CORNER MESH EMBEDDED IN BASE COAT

\*BY OTHERS

NOTE: A CONTINUOUS OVERLAY OF  
STANDARD MESH, INTERMEDIATE 6, OR  
INTERMEDIATE 12 IS REQUIRED OVER  
CORNER MESH



REV 180203

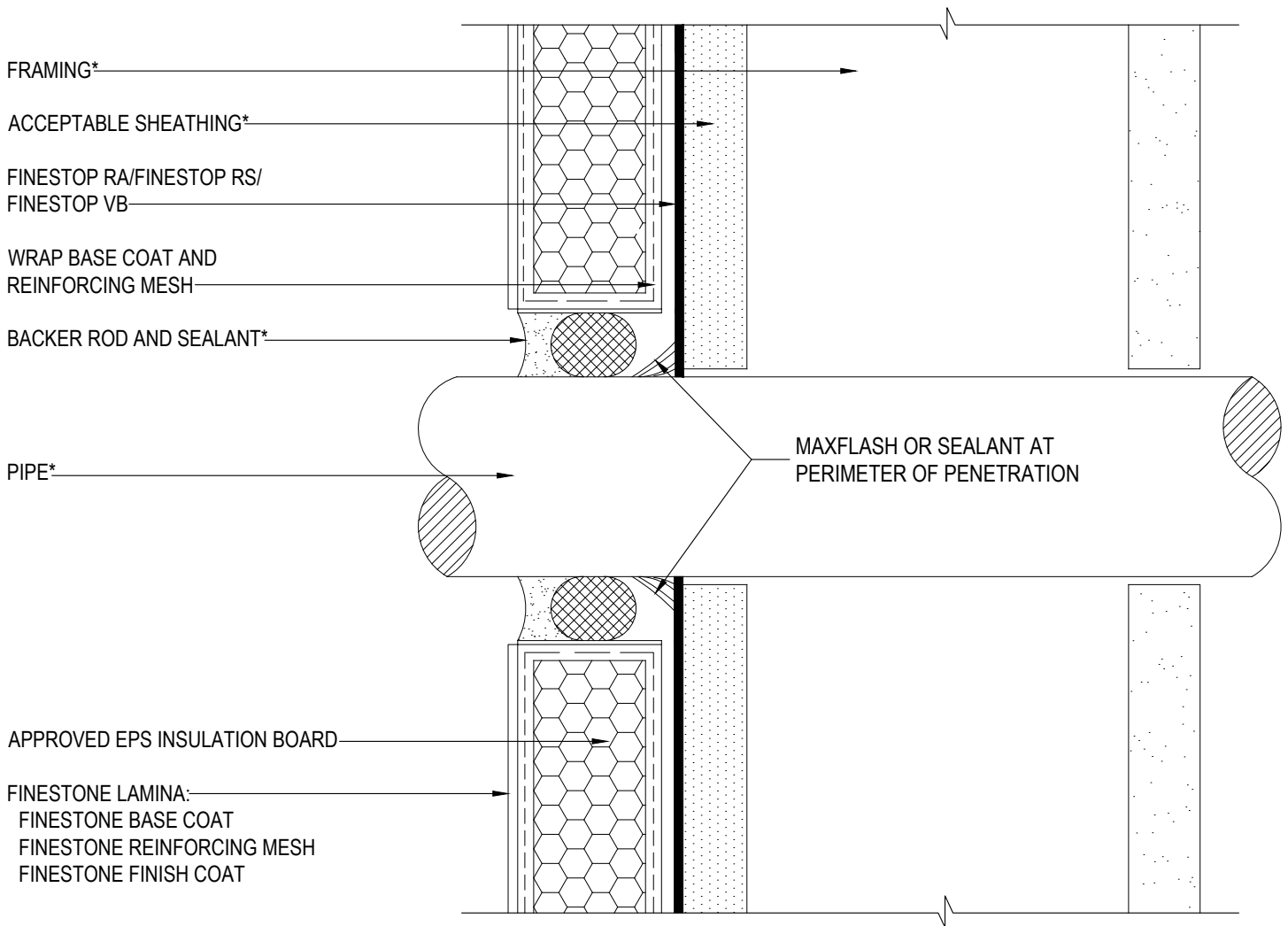
## TYPICAL CORNER MESH APPLICATION PEBBLETEX CI-DCA

SCALE: NTS

06

Structure, substrates, flashing, and other items which are not part of the BASF *Pebbletex CI-DCA* system are the responsibility of others. This detail is subject to change without notice. BASF Corporation - Wall Systems (herein after BASF Wall Systems) accepts no liability for the end use of this detail. For conditions not shown, consult BASF Wall Systems for review of specific detail.

**BASF**  
We create chemistry



\*BY OTHERS

REV 180203

## TYPICAL PIPE PENETRATION PEBBLETEx CI-DCA

SCALE: NTS  
**07**

Structure, substrates, flashing, and other items which are not part of the BASF *Pebbletex CI-DCA* system are the responsibility of others. This detail is subject to change without notice. BASF Corporation - Wall Systems (herein after BASF Wall Systems) accepts no liability for the end use of this detail. For conditions not shown, consult BASF Wall Systems for review of specific detail.



FINESTOP RA/FINESTOP RS/  
FINESTOP VB

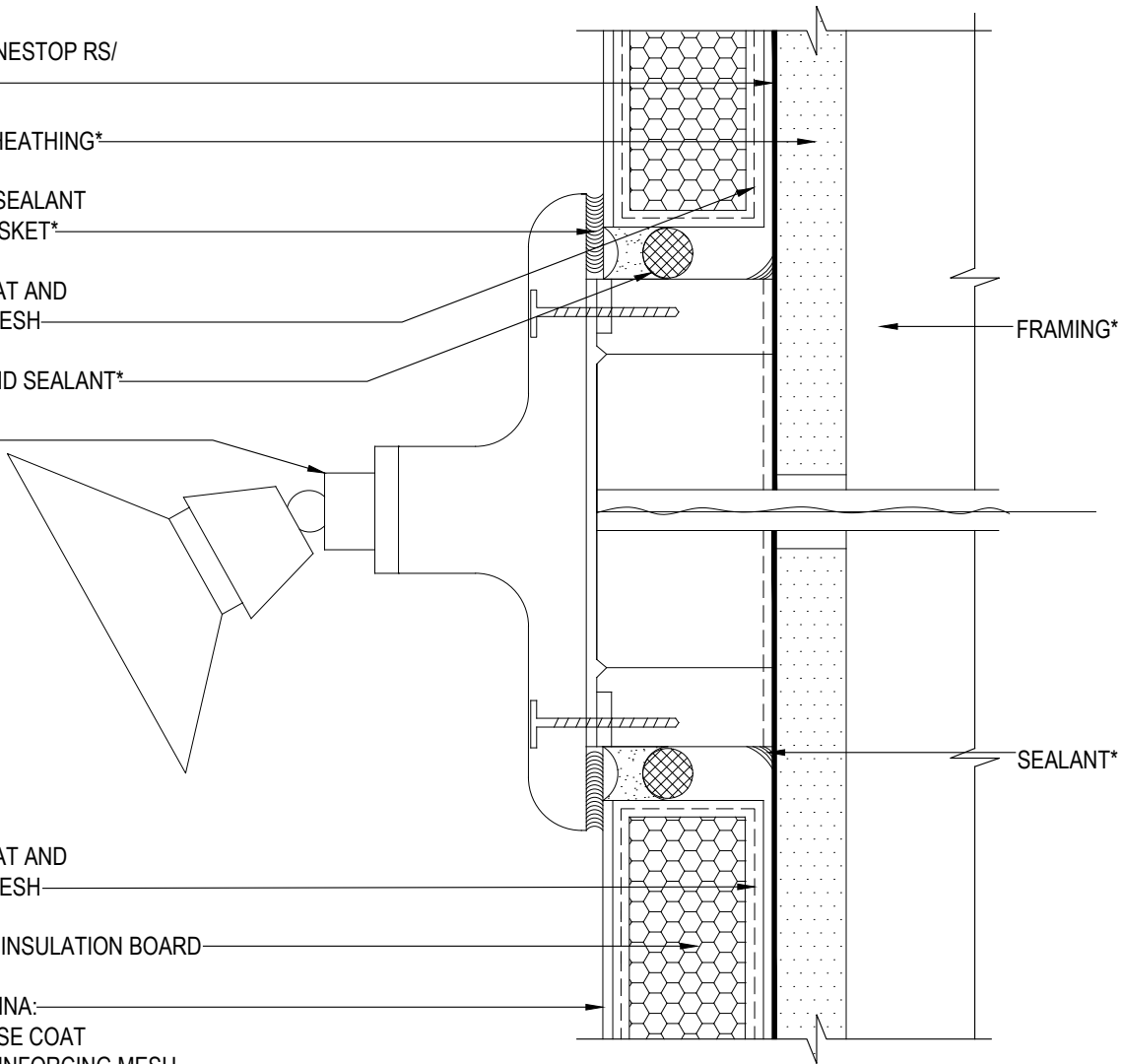
ACCEPTABLE SHEATHING\*

SET FLANGE IN SEALANT  
OR PROVIDE GASKET\*

WRAP BASE COAT AND  
REINFORCING MESH

BACKER ROD AND SEALANT\*

LIGHT FIXTURE\*



WRAP BASE COAT AND  
REINFORCING MESH

APPROVED EPS INSULATION BOARD

FINESTONE LAMINA:  
FINESTONE BASE COAT  
FINESTONE REINFORCING MESH  
FINESTONE FINISH COAT

\*BY OTHERS

REV 180702

## TYPICAL LIGHT FIXTURE PEBBLETEX CI-DCA

SCALE: NTS

08

Structure, substrates, flashing, and other items which are not part of the BASF *Pebbletex CI-DCA* system are the responsibility of others. This detail is subject to change without notice. BASF Corporation - Wall Systems (herein after BASF Wall Systems) accepts no liability for the end use of this detail. For conditions not shown, consult BASF Wall Systems for review of specific detail.

**BASF**  
We create chemistry



FRAMING\*

ACCEPTABLE SHEATHING\*

FINESTOP RA/FINESTOP RS/  
FINESTOP VB

WRAP FINESTONE BASE COAT AND  
REINFORCING MESH

WS FLASH W/ FLASHING PRIMER

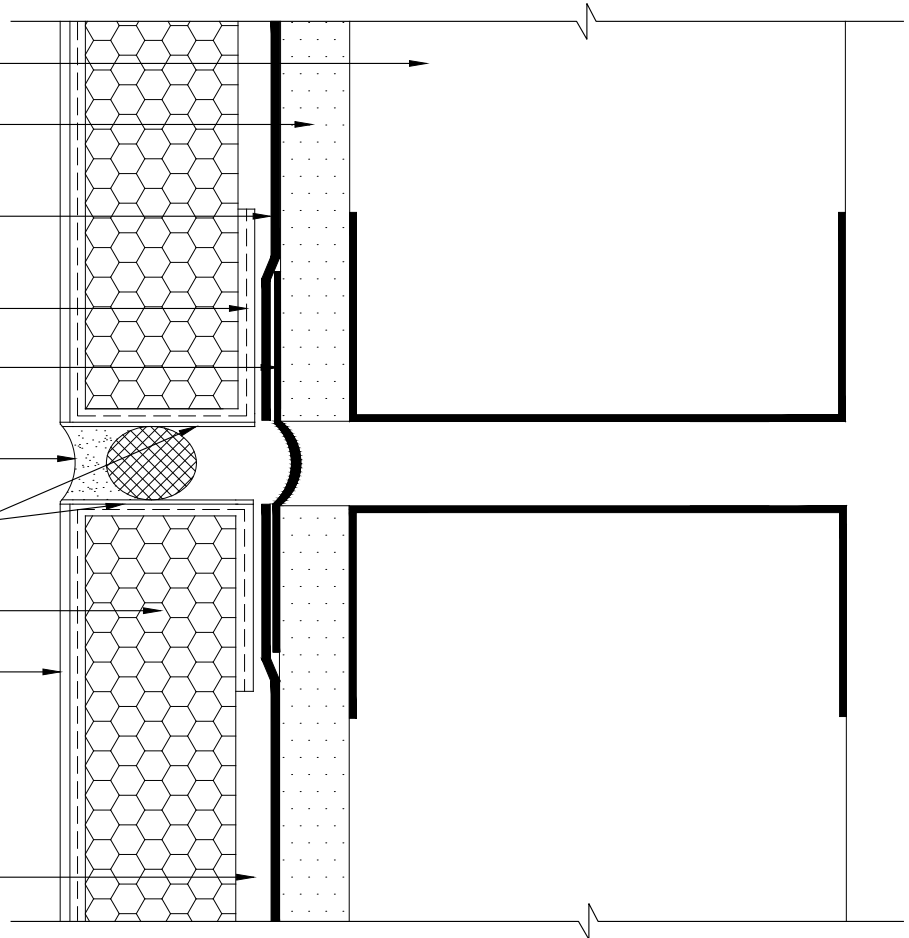
BACKER ROD AND SEALANT  
(WIDTH PER DESIGN)\*

BASF COLOR COAT  
(OPTIONAL)

APPROVED EPS INSULATION BOARD

FINESTONE LAMINA:  
FINESTONE BASE COAT  
FINESTONE REINFORCING MESH  
FINESTONE FINISH COAT

FINESTONE ADHESIVE/BASE COAT  
APPLIED TO EPS INSULATION BOARD



\*BY OTHERS

REV 180203

## TYPICAL VERTICAL EXPANSION JOINT DETAIL

### PEBBLETEX CI-DCA

SCALE: NTS

09

Structure, substrates, flashing, and other items which are not part of the BASF *Pebbletex CI-DCA* system are the responsibility of others. This detail is subject to change without notice. BASF Corporation - Wall Systems (herein after BASF Wall Systems) accepts no liability for the end use of this detail. For conditions not shown, consult BASF Wall Systems for review of specific detail.

**BASF**  
We create chemistry

FRAMING\*

ACCEPTABLE SUBSTRATE\*

ACCEPTABLE SHEATHING\*

WS FLASH WITH FLASHING PRIMER

FINESTOP RA/FINESTOP RS/  
FINESTOP VB

FINESTONE ADHESIVE/BASE COAT  
APPLIED TO EPS INSULATION BOARD

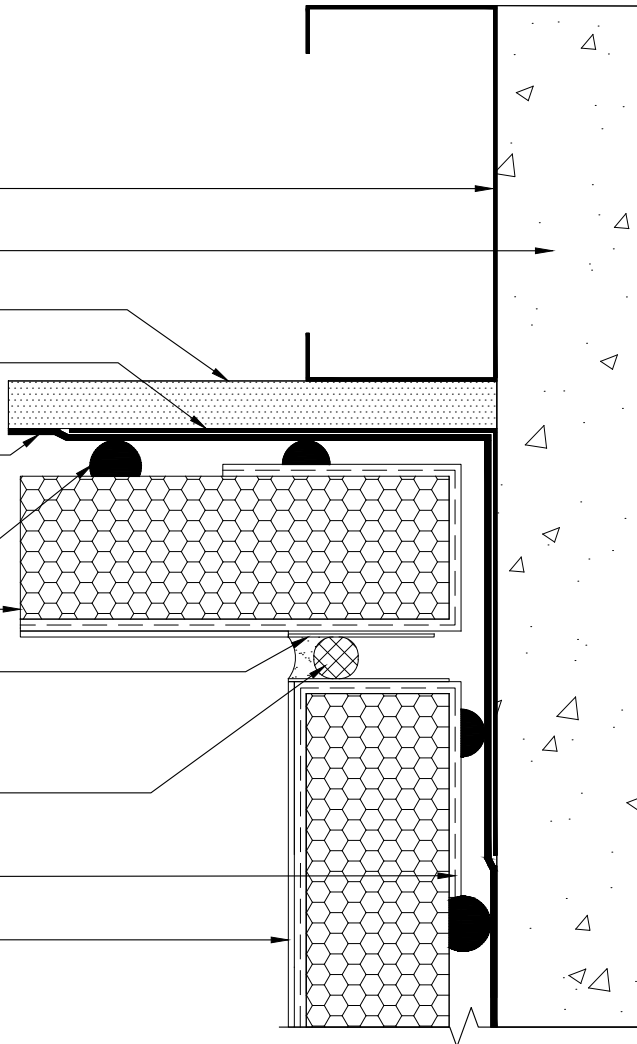
APPROVED EPS INSULATION BOARD

BASF COLOR COAT  
(OPTIONAL)

BACKER ROD & SEALANT  
(WIDTH PER DESIGN)\*

WRAP BASE COAT AND  
REINFORCING MESH

FINESTONE LAMINA:  
FINESTONE BASE COAT  
FINESTONE REINFORCING MESH  
FINESTONE FINISH COAT



\*BY OTHERS

REV 180203

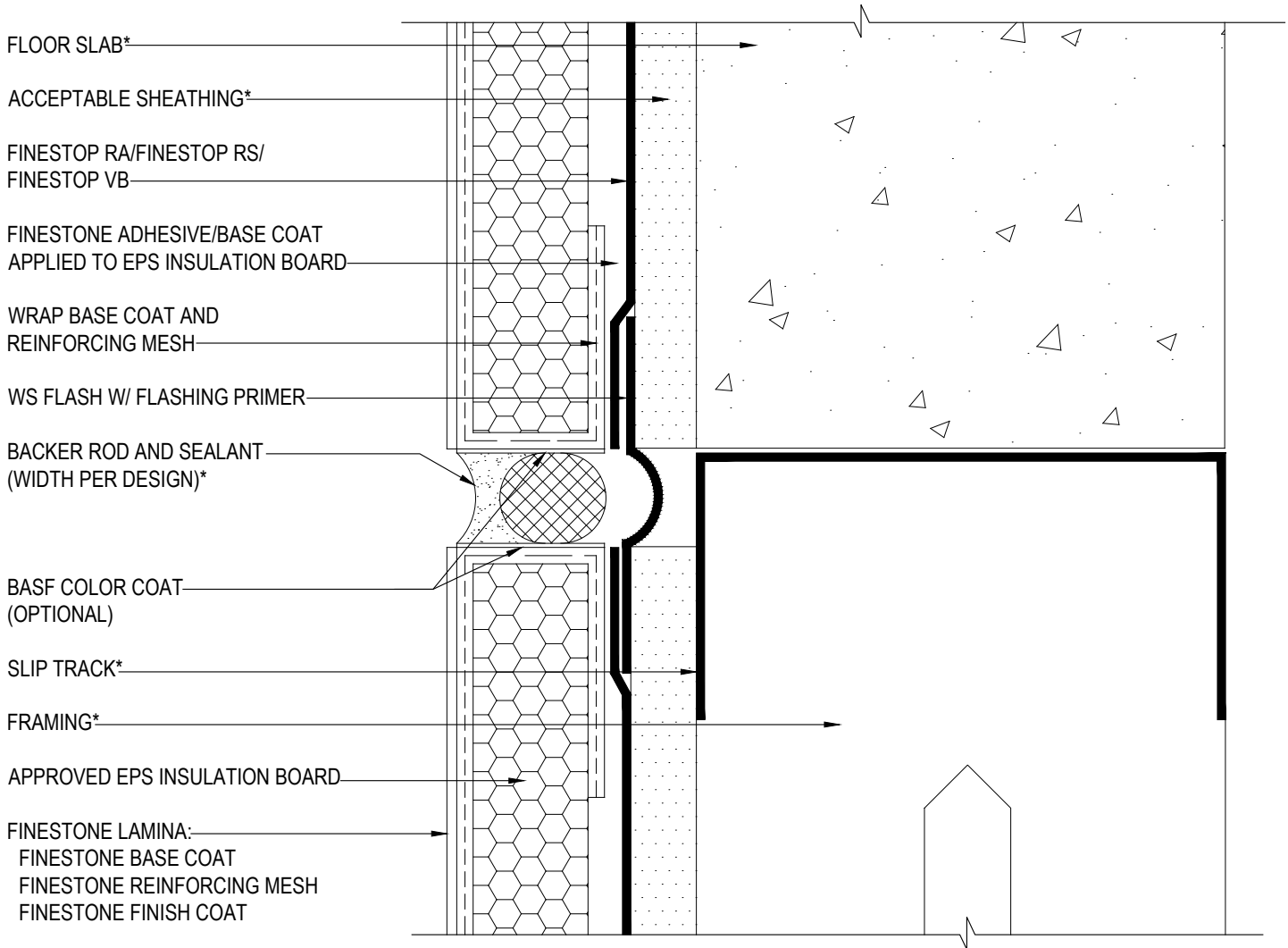
## TYPICAL EXPANSION JOINT AT CHANGE IN SUBSTRATE PEBBLETEX CI-DCA

SCALE: NTS

10

Structure, substrates, flashing, and other items which are not part of the BASF *Pebbletex CI-DCA* system are the responsibility of others. This detail is subject to change without notice. BASF Corporation - Wall Systems (herein after BASF Wall Systems) accepts no liability for the end use of this detail. For conditions not shown, consult BASF Wall Systems for review of specific detail.

**BASF**  
We create chemistry



\*BY OTHERS

REV 180203

## TYPICAL EXPANSION JOINT DETAIL AT FLOORLINE PEBBLETEX CI-DCA

SCALE: NTS

11

Structure, substrates, flashing, and other items which are not part of the BASF *Pebbletex CI-DCA* system are the responsibility of others. This detail is subject to change without notice. BASF Corporation - Wall Systems (herein after BASF Wall Systems) accepts no liability for the end use of this detail. For conditions not shown, consult BASF Wall Systems for review of specific detail.

**BASF**  
We create chemistry

FLOOR SLAB\*

FINESTOP RA/FINESTOP RS/  
FINESTOP VB

MAXFLASH, SHEATHING FABRIC  
EMBEDDED IN FINESTOP RA; RS; VB, OR  
WS FLASH W/ FLASHING PRIMER

ACCEPTABLE SHEATHING\*

WRAP BASE COAT AND  
REINFORCING MESH

WS FLASH WITH FLASHING PRIMER

FLASHING\*

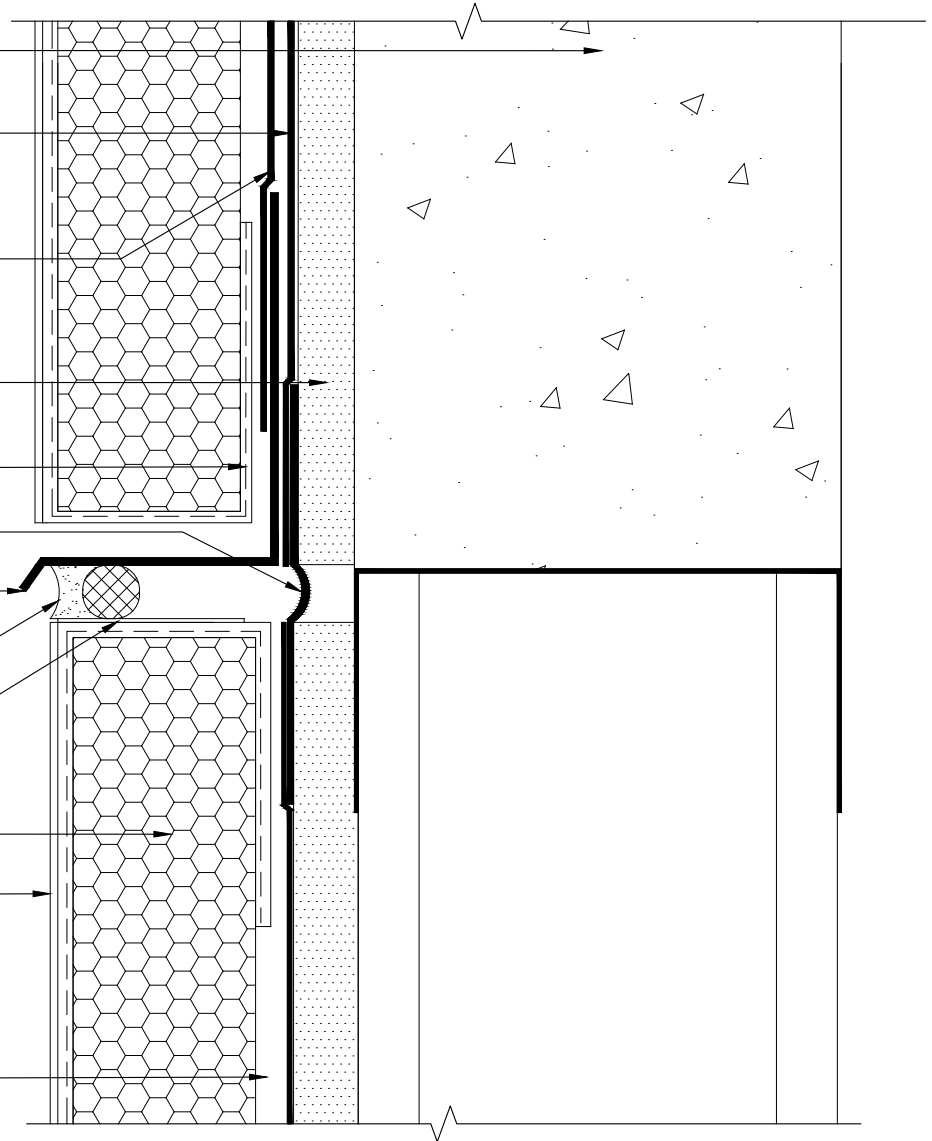
BACKER ROD & SEALANT  
(WIDTH PER DESIGN)\*

BASF COLOR COAT  
(OPTIONAL)

APPROVED EPS INSULATION BOARD

FINESTONE LAMINA:  
FINESTONE BASE COAT  
FINESTONE REINFORCING MESH  
FINESTONE FINISH COAT

FINESTONE ADHESIVE/BASE COAT  
APPLIED TO EPS INSULATION BOARD



\*BY OTHERS

REV 180203

## TYPICAL DRAINAGE AT FLOORLINE PEBBLETEX CI-DCA

SCALE: NTS

# 12

Structure, substrates, flashing, and other items which are not part of the BASF *Pebbletex CI-DCA* system are the responsibility of others. This detail is subject to change without notice. BASF Corporation - Wall Systems (herein after BASF Wall Systems) accepts no liability for the end use of this detail. For conditions not shown, consult BASF Wall Systems for review of specific detail.

  
**We create chemistry**

FRAMING\*

ACCEPTABLE SHEATHING\*

FINESTONE ADHESIVE/BASE COAT  
APPLIED TO EPS INSULATION BOARD

FINESTOP RA/FINESTOP RS/  
FINESTOP VB

MAXFLASH, SHEATHING FABRIC  
EMBEDDED IN FINESTOP RA; RS; VB, OR  
WS FLASH W/ FLASHING PRIMER

FINESTONE LAMINA:  
FINESTONE BASE COAT  
FINESTONE REINFORCING MESH  
FINESTONE FINISH COAT

APPROVED EPS INSULATION BOARD

FLASHING\*

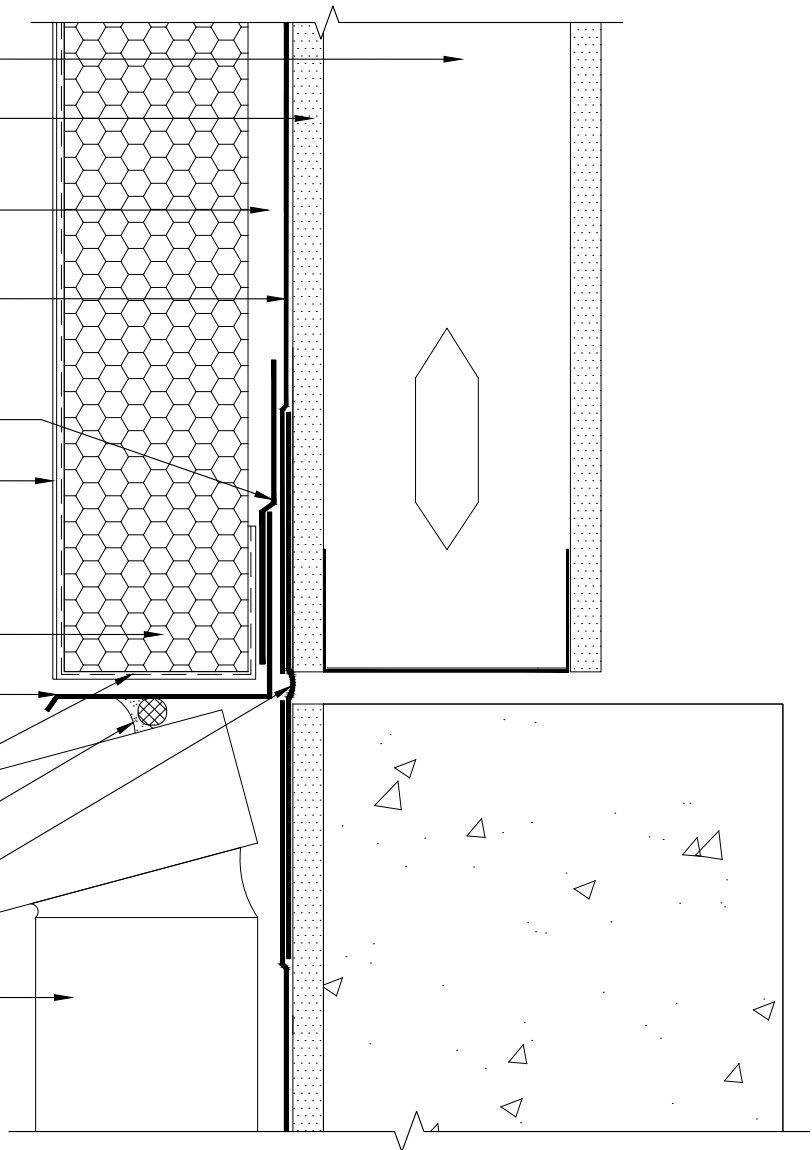
WRAP BASE COAT AND  
REINFORCING MESH

BACKER ROD & SEALANT  
(WIDTH PER DESIGN)\*

WS FLASH WITH FLASHING PRIMER

BRICK\*

\*BY OTHERS



REV 180203

## TYPICAL ABUTMENT TO BRICK WITH DRAINAGE AT FLOORLINE PEBBLETEX CI-DCA

SCALE: NTS

13

Structure, substrates, flashing, and other items which are not part of the BASF *Pebbletex CI-DCA* system are the responsibility of others. This detail is subject to change without notice. BASF Corporation - Wall Systems (herein after BASF Wall Systems) accepts no liability for the end use of this detail. For conditions not shown, consult BASF Wall Systems for review of specific detail.

**BASF**  
We create chemistry

FRAMING\*

ACCEPTABLE SHEATHING\*

FINESTONE ADHESIVE/BASE COAT  
APPLIED TO EPS INSULATION BOARD

FINESTONE LAMINA:  
FINESTONE BASE COAT  
FINESTONE REINFORCING MESH  
FINESTONE FINISH COAT

FINESTOP RA/FINESTOP RS/  
FINESTOP VB

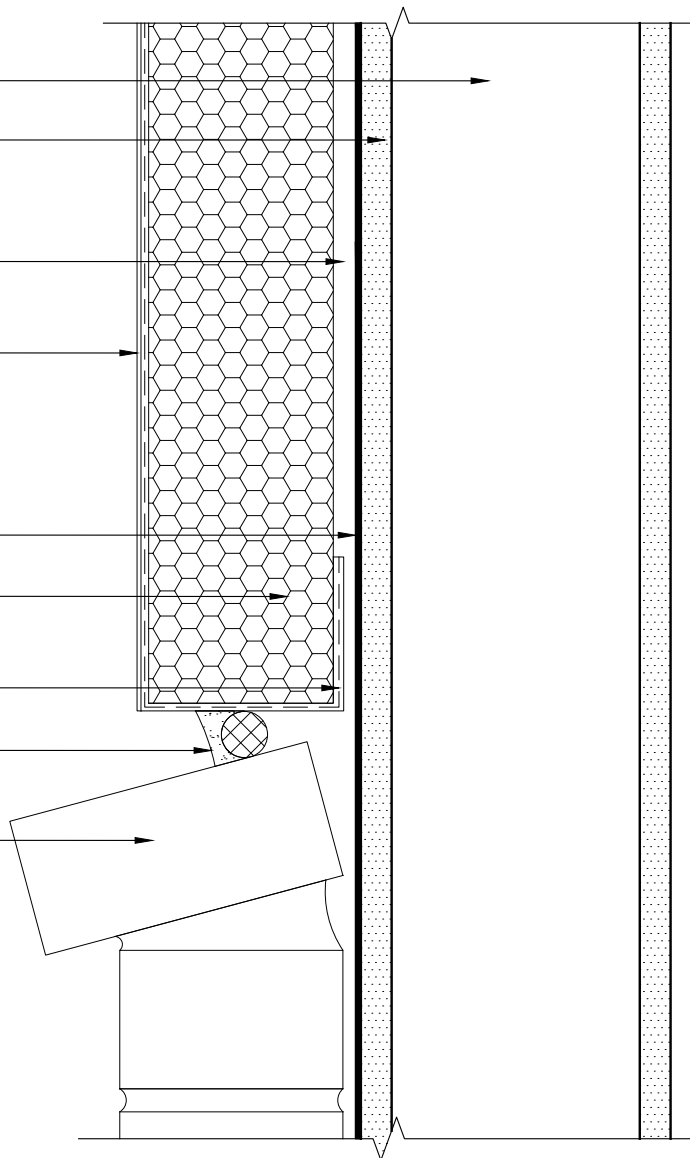
APPROVED EPS INSULATION BOARD

WRAP BASE COAT AND  
REINFORCING MESH

BACKER ROD & SEALANT  
(WIDTH PER DESIGN)\*

BRICK\*

\*BY OTHERS



REV 180203

## TYPICAL CI-DCA ABUTMENT TO BRICK PEBBLETEX CI-DCA

SCALE: NTS

14

Structure, substrates, flashing, and other items which are not part of the BASF *Pebbletex CI-DCA* system are the responsibility of others. This detail is subject to change without notice. BASF Corporation - Wall Systems (herein after BASF Wall Systems) accepts no liability for the end use of this detail. For conditions not shown, consult BASF Wall Systems for review of specific detail.

**BASF**  
We create chemistry

FRAMING\*

ACCEPTABLE SHEATHING\*

FINESTOP RA/FINESTOP RS/  
FINESTOP VB

MAXFLASH, SHEATHING FABRIC  
EMBEDDED IN FINESTOP RA; RS; VB,  
OR WS FLASH W/ FLASHING PRIMER

FINESTONE ADHESIVE/BASE COAT  
APPLIED TO EPS INSULATION BOARD

APPROVED EPS INSULATION BOARD

FINESTONE LAMINA:  
FINESTONE BASE COAT  
FINESTONE REINFORCING MESH  
FINESTONE FINISH COAT

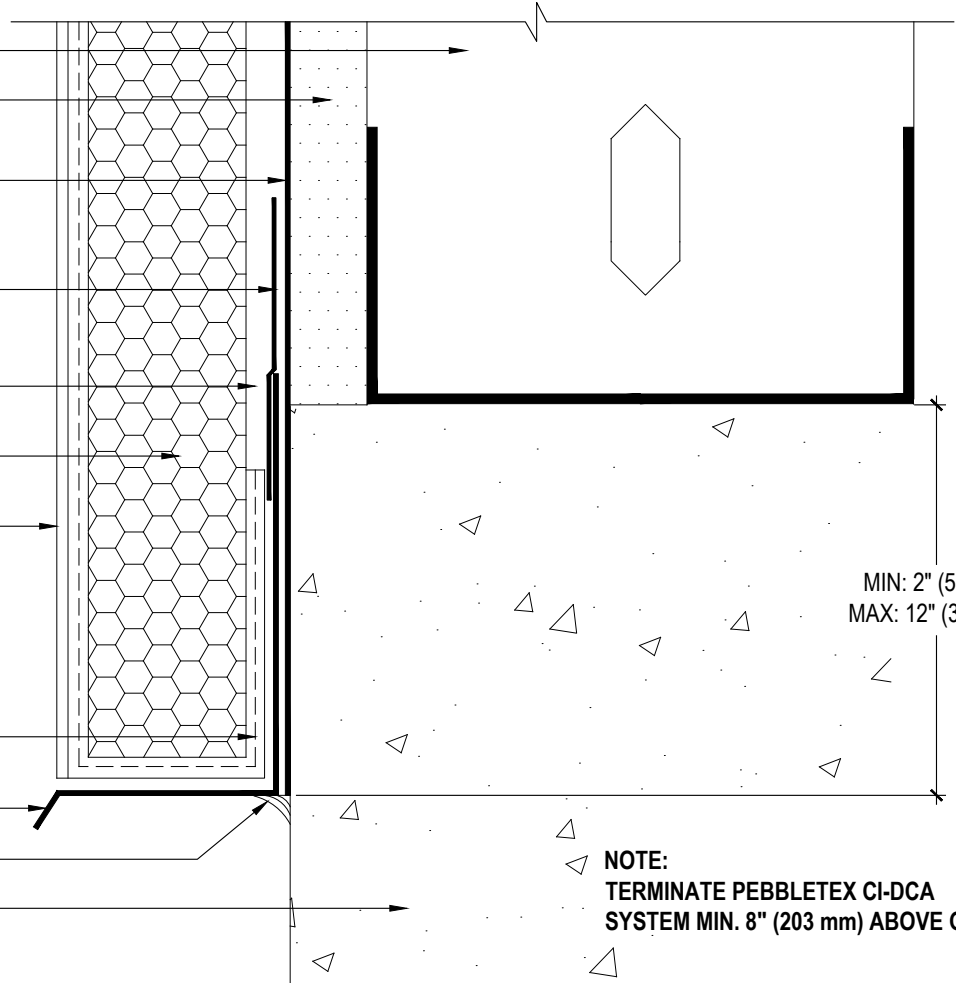
WRAP BASE COAT AND  
REINFORCING MESH

FLASHING\*

SEALANT\*

FOUNDATION\*

\*BY OTHERS



**NOTE:**  
TERMINATE PEBBLETEX CI-DCA  
SYSTEM MIN. 8" (203 mm) ABOVE GRADE

MIN: 2" (50mm)  
MAX: 12" (305mm)

REV 180203

## TYPICAL TERMINATION AT FOUNDATION PEBBLETEx CI-DCA

SCALE: NTS

15

Structure, substrates, flashing, and other items which are not part of the BASF *Pebbletex* CI-DCA system are the responsibility of others. This detail is subject to change without notice. BASF Corporation - Wall Systems (herein after BASF Wall Systems) accepts no liability for the end use of this detail. For conditions not shown, consult BASF Wall Systems for review of specific detail.

**BASF**  
We create chemistry

FRAMING\*

ACCEPTABLE SHEATHING\*

FINESTOP RA/FINESTOP RS/  
FINESTOP VB

FINESTONE BASE COAT

APPROVED EPS INSULATION BOARD

FINESTONE LAMINA:  
FINESTONE BASE COAT  
FINESTONE REINFORCING MESH  
FINESTONE FINISH COAT

WS FLASH W/ FLASHING PRIMER

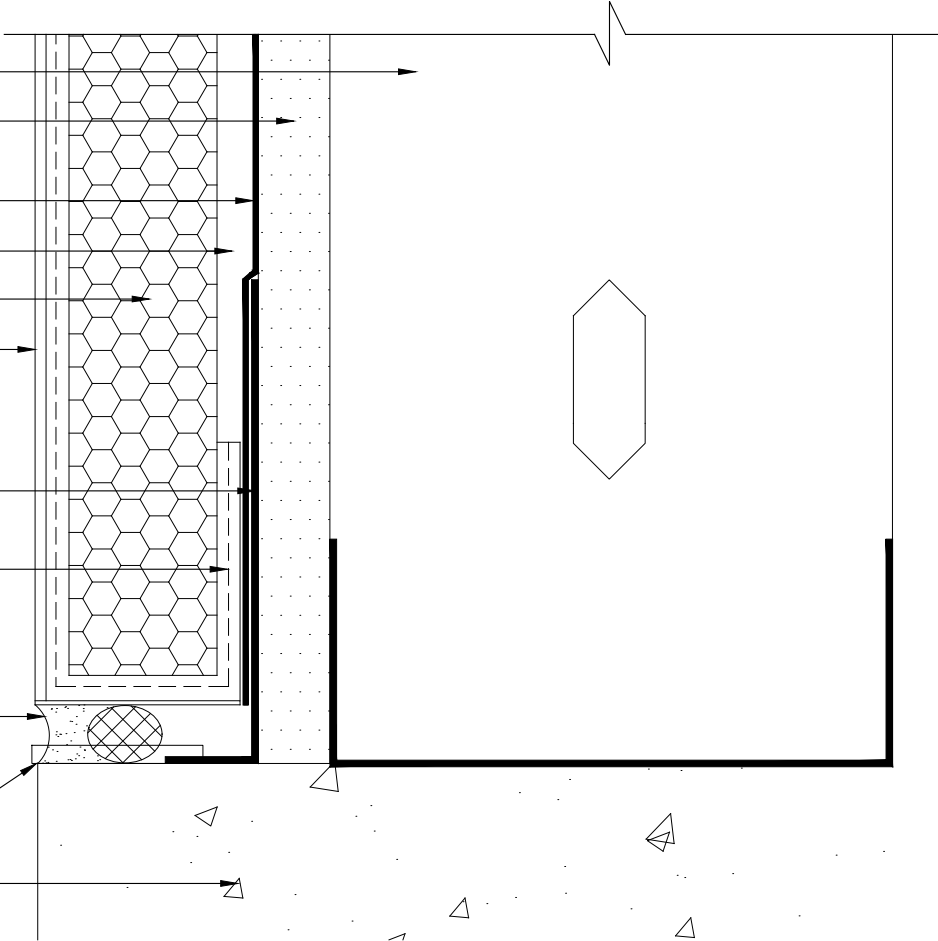
WRAP BASE COAT AND  
REINFORCING MESH

BACKER ROD AND SEALANT  
(WIDTH PER DESIGN)\*

WEEP TUBE\*

FOUNDATION\*

\*BY OTHERS



REV 180203

## TYPICAL TERMINATION AT FOUNDATION (FLUSH)

### PEBBLETEX CI-DCA

SCALE: NTS

16

Structure, substrates, flashing, and other items which are not part of the BASF *Pebbletex CI-DCA* system are the responsibility of others. This detail is subject to change without notice. BASF Corporation - Wall Systems (herein after BASF Wall Systems) accepts no liability for the end use of this detail. For conditions not shown, consult BASF Wall Systems for review of specific detail.

**BASF**  
We create chemistry



FRAMING\*

ACCEPTABLE SHEATHING\*

FINESTOP RA/FINESTOP RS/  
FINESTOP VB

FINESTONE ADHESIVE/BASE COAT  
APPLIED TO EPS INSULATION BOARD

APPROVED EPS INSULATION BOARD

FINESTONE LAMINA:  
FINESTONE BASE COAT  
FINESTONE REINFORCING MESH  
FINESTONE FINISH COAT

MAXFLASH, SHEATHING FABRIC  
EMBEDDED IN FINESTOP RA; RS; VB,  
OR WS FLASH W/ FLASHING PRIMER

WRAP BASE COAT AND  
REINFORCING MESH

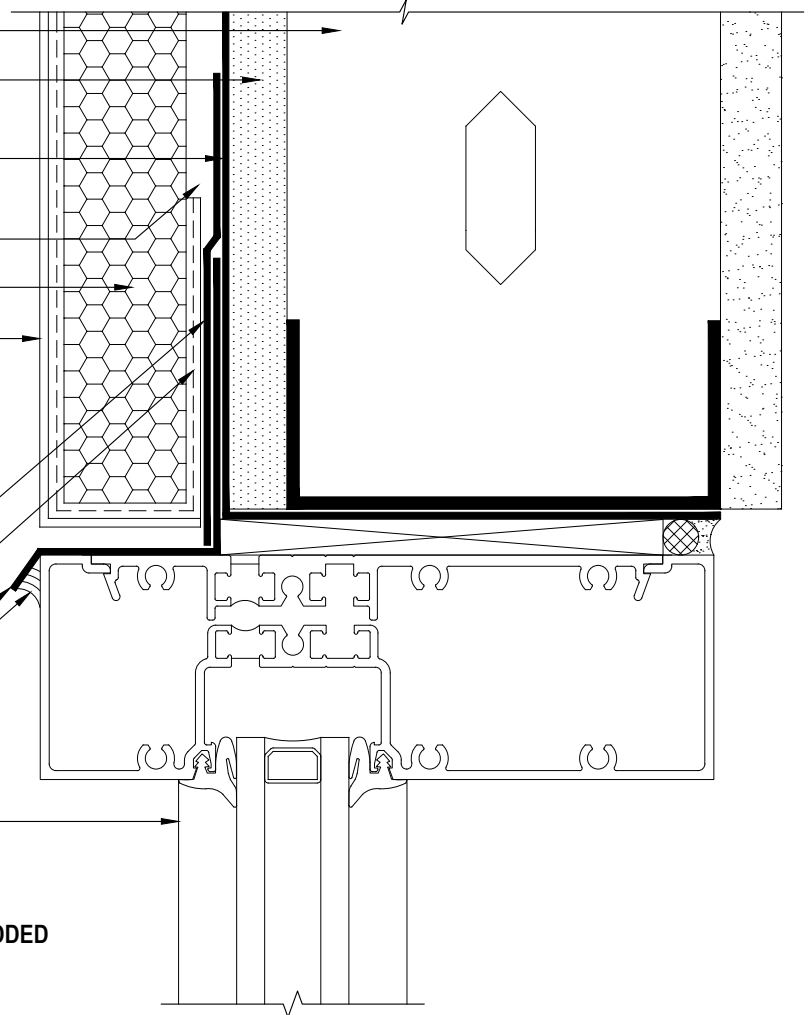
FLASHING\*

SEALANT\*

WINDOW\*

\*BY OTHERS

**NOTE: WRAP MAXFLASH, SHEATHING FABRIC EMBEDDED  
IN FINESTOP RA; RS; VB OR WS FLASH W/  
FLASHING PRIMER INTO ROUGH OPENING ON  
HEAD IF ALSO INTENDED TO BE AN AIR BARRIER.**



REV 180702

## TYPICAL WINDOW HEAD (FLUSH) PEBBLETEx CI-DCA

SCALE: NTS

17

Structure, substrates, flashing, and other items which are not part of the BASF *Pebbletex CI-DCA* system are the responsibility of others. This detail is subject to change without notice. BASF Corporation - Wall Systems (herein after BASF Wall Systems) accepts no liability for the end use of this detail. For conditions not shown, consult BASF Wall Systems for review of specific detail.

**BASF**  
We create chemistry

FRAMING\*

ACCEPTABLE SHEATHING\*

FINESTOP RA/FINESTOP RS/  
FINESTOP VB

FINESTONE ADHESIVE/ BASE COAT  
APPLIED TO EPS INSULATION BOARD

APPROVED EPS INSULATION BOARD

MAXFLASH, SHEATHING FABRIC  
EMBEDDED IN FINESTOP RA; RS; VB, OR  
WS FLASH W/ FLASHING PRIMER

FINESTONE LAMINA:  
FINESTONE BASE COAT  
FINESTONE REINFORCING MESH  
FINESTONE FINISH COAT

WRAP BASE COAT AND  
REINFORCING MESH

BASF COLOR COAT  
(OPTIONAL)

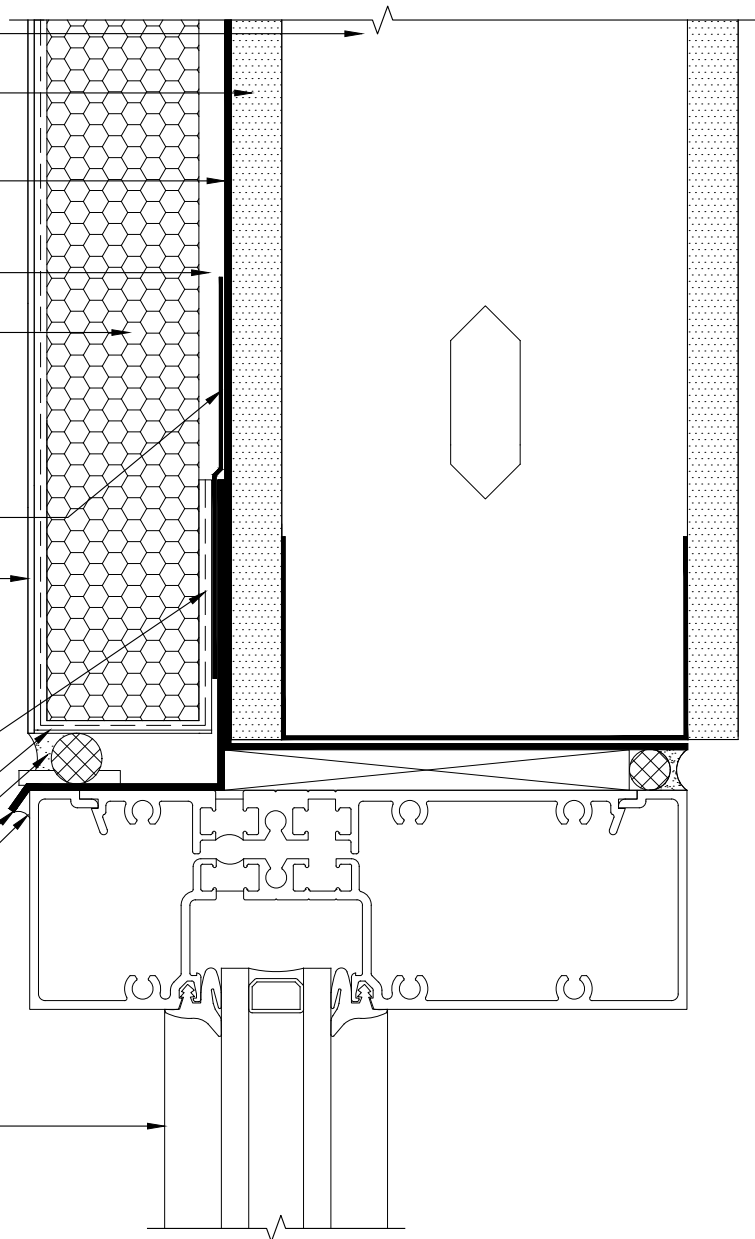
BACKER ROD & SEALANT W/  
WEEP TUBES AT MAX .16" O.C.\*

FLASHING\*

SEALANT\*

WINDOW\*

\*BY OTHERS



NOTE: WRAP MAXFLASH, SHEATHING FABRIC EMBEDDED  
IN FINESTOP RA; RS; VB OR WS FLASH W/  
FLASHING PRIMER INTO ROUGH OPENING ON  
HEAD IF ALSO INTENDED TO BE AN AIR BARRIER.

REV 180702

## TYPICAL WINDOW HEAD (FLUSH) WITH WEEP TUBES PEBBLETEx CI-DCA

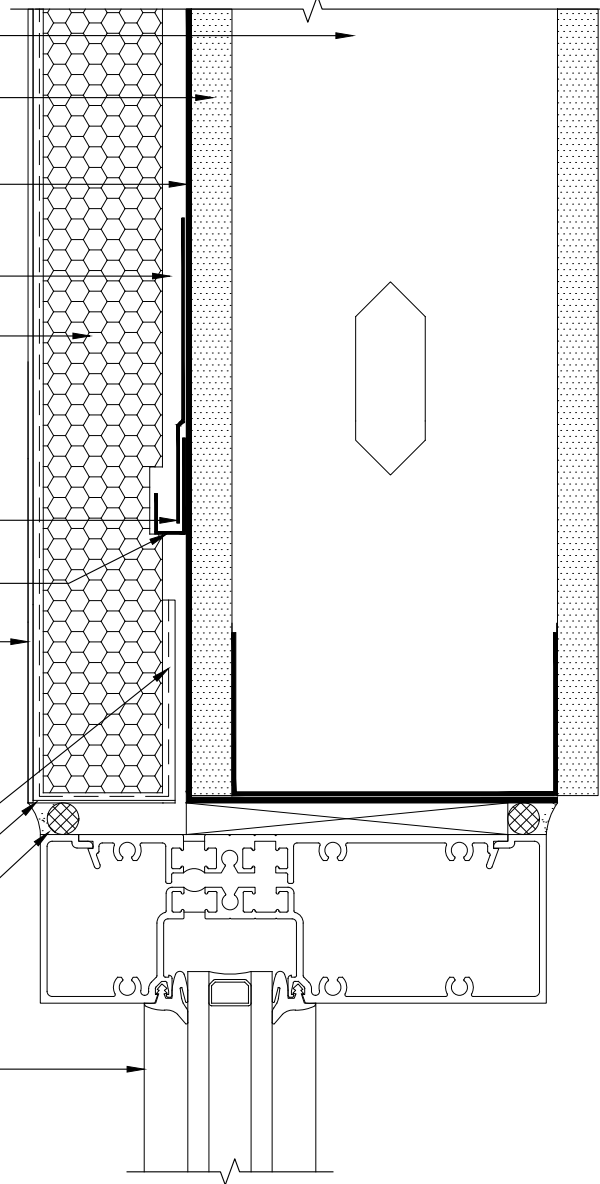
SCALE: NTS

18

Structure, substrates, flashing, and other items which are not part of the BASF *Pebbletex CI-DCA* system are the responsibility of others. This detail is subject to change without notice. BASF Corporation - Wall Systems (herein after BASF Wall Systems) accepts no liability for the end use of this detail. For conditions not shown, consult BASF Wall Systems for review of specific detail.

**BASF**  
We create chemistry

- FRAMING\*
- ACCEPTABLE SHEATHING\*
- FINESTOP RA/FINESTOP RS/  
FINESTOP VB
- FINESTONE ADHESIVE/ BASE COAT  
APPLIED TO EPS INSULATION BOARD
- APPROVED EPS INSULATION BOARD
- MAXFLASH, SHEATHING FABRIC  
EMBEDDED IN FINESTOP RA; RS; VB,  
OR WS FLASH W/ FLASHING PRIMER
- DIVERTER TRACK\*
- FINESTONE LAMINA:  
FINESTONE BASE COAT  
FINESTONE REINFORCING MESH  
FINESTONE FINISH COAT
- WRAP BASE COAT AND  
REINFORCING MESH
- BASF COLOR COAT  
(OPTIONAL)
- BACKER ROD & SEALANT  
(WIDTH PER DESIGN)\*
- WINDOW\*



\*BY OTHERS

**NOTE: WRAP MAXFLASH, SHEATHING FABRIC EMBEDDED IN FINESTOP RA; RS; VB OR WS FLASH W/ FLASHING PRIMER INTO ROUGH OPENING ON HEAD IF ALSO INTENDED TO BE AN AIR BARRIER.**

REV 180702

## TYPICAL WINDOW HEAD (FLUSH) WITH DIVERTER TRACK PEBBLETEx CI-DCA

SCALE: NTS

19

Structure, substrates, flashing, and other items which are not part of the BASF *Pebbletex CI-DCA* system are the responsibility of others. This detail is subject to change without notice. BASF Corporation - Wall Systems (herein after BASF Wall Systems) accepts no liability for the end use of this detail. For conditions not shown, consult BASF Wall Systems for review of specific detail.

■ - BASF

**We create chemistry**

FRAMING\*

ACCEPTABLE SHEATHING\*

FINESTOP RA/FINESTOP VB/  
FINESTOP RS

FINESTONE ADHESIVE/BASE COAT  
APPLIED TO EPS INSULATION BOARD

MAXFLASH, SHEATHING FABRIC  
EMBEDDED IN FINESTOP RA; RS; VB, OR  
WS FLASH W/ FLASHING PRIMER

APPROVED EPS INSULATION BOARD

FINESTONE LAMINA:  
FINESTONE BASE COAT  
FINESTONE REINFORCING MESH  
FINESTONE FINISH COAT

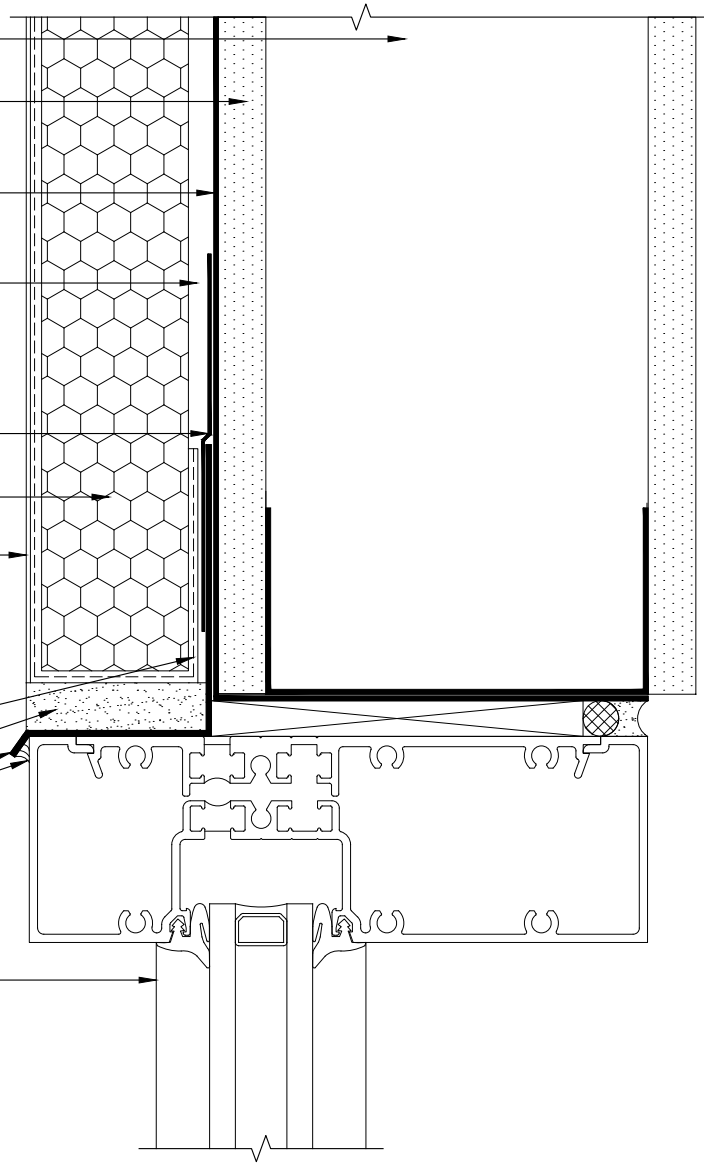
WRAP BASE COAT AND  
REINFORCING MESH

ACCEPTABLE SEALANT  
AS END DAM\*

FLASHING\*

SEALANT\*

WINDOW\*



\*BY OTHERS

NOTE: WRAP MAXFLASH, SHEATHING FABRIC EMBEDDED  
IN FINESTOP RA; RS; VB OR WS FLASH W/  
FLASHING PRIMER INTO ROUGH OPENING ON  
HEAD IF ALSO INTENDED TO BE AN AIR BARRIER.

REV 180702

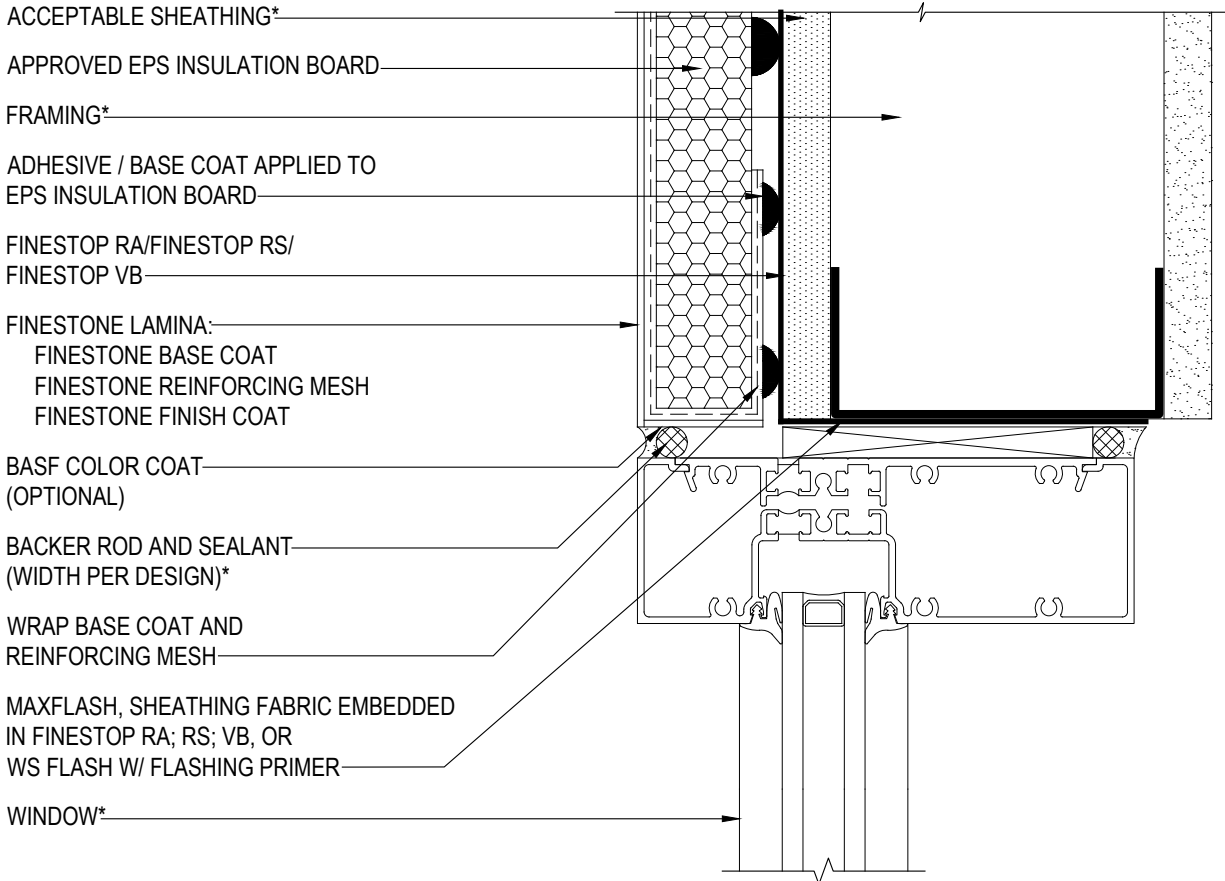
## TYPICAL WINDOW HEAD FLASHING W/ SEALANT END DAM PEBBLETEX CI-DCA

SCALE: NTS

20

Structure, substrates, flashing, and other items which are not part of the BASF *Pebbletex CI-DCA* system are the responsibility of others. This detail is subject to change without notice. BASF Corporation - Wall Systems (herein after BASF Wall Systems) accepts no liability for the end use of this detail. For conditions not shown, consult BASF Wall Systems for review of specific detail.

**BASF**  
We create chemistry



\*BY OTHERS

REV 180203

## TYPICAL WINDOW JAMB (FLUSH) PEBBLETEX CI-DCA

SCALE: NTS

21

Structure, substrates, flashing, and other items which are not part of the BASF *Pebbletex CI-DCA* system are the responsibility of others. This detail is subject to change without notice. BASF Corporation - Wall Systems (herein after BASF Wall Systems) accepts no liability for the end use of this detail. For conditions not shown, consult BASF Wall Systems for review of specific detail.

■ - BASF

We create chemistry

WINDOW\*

BACKER ROD AND SEALANT  
(WIDTH PER DESIGN)\*

BASF COLOR COAT  
(OPTIONAL)

FINESTONE LAMINA:  
FINESTONE BASE COAT  
FINESTONE REINFORCING MESH  
FINESTONE FINISH COAT

MAXFLASH, SHEATHING FABRIC  
EMBEDDED IN FINESTOP RA; RS; VB, OR  
WS FLASH w/ FLASHING PRIMER

WRAP BASE COAT AND  
REINFORCING MESH

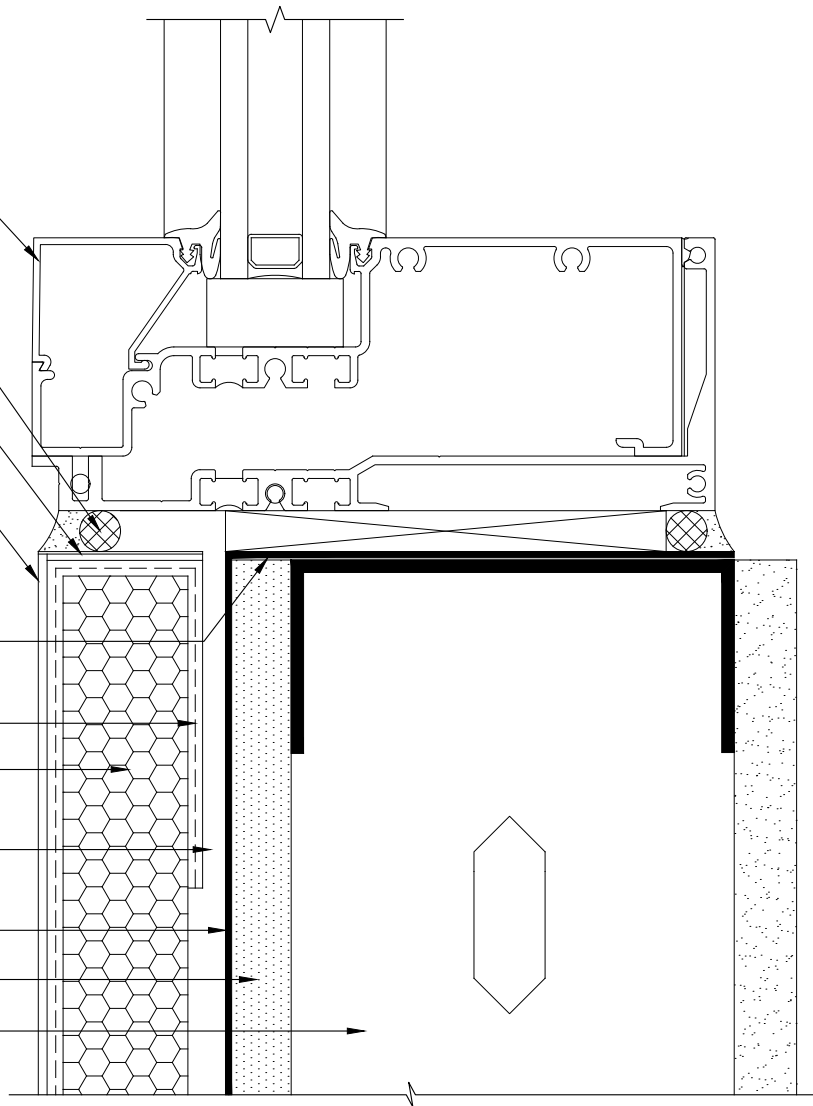
APPROVED EPS INSULATION BOARD

ADHESIVE / BASE COAT APPLIED  
TO EPS INSULATION BOARD

FINESTOP RA/FINESTOP RS/  
FINESTOP VB

ACCEPTABLE SHEATHING\*

FRAMING\*



\*BY OTHERS

REV 180203

## TYPICAL WINDOW SILL DETAIL (FLUSH)

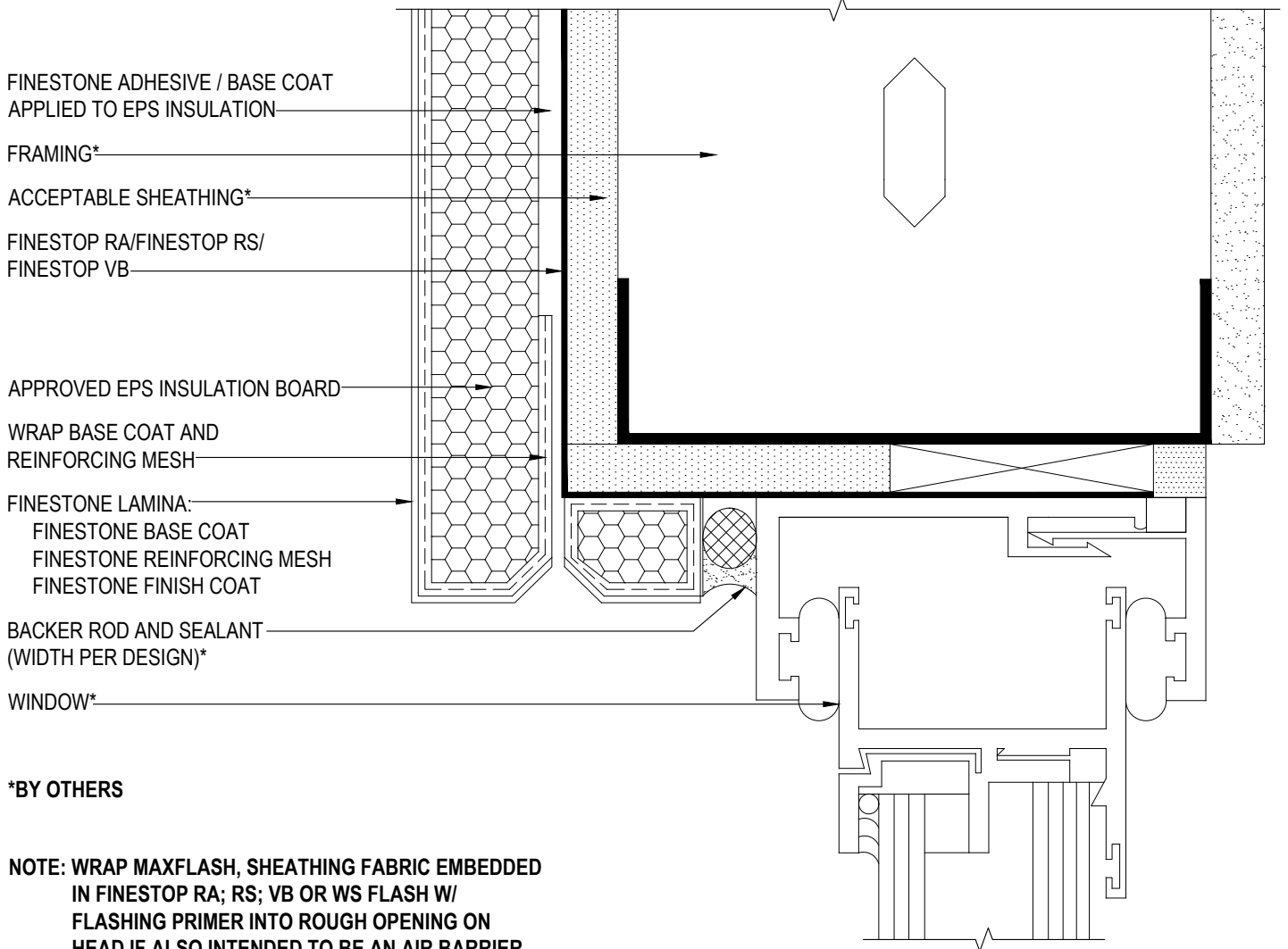
### PEBBLETEX CI-DCA

SCALE: NTS

# 22

Structure, substrates, flashing, and other items which are not part of the BASF *Pebbletex CI-DCA* system are the responsibility of others. This detail is subject to change without notice. BASF Corporation - Wall Systems (herein after BASF Wall Systems) accepts no liability for the end use of this detail. For conditions not shown, consult BASF Wall Systems for review of specific detail.

  
**We create chemistry**



\*BY OTHERS

**NOTE: WRAP MAXFLASH, SHEATHING FABRIC EMBEDDED IN FINESTOP RA; RS; VB OR WS FLASH W/ FLASHING PRIMER INTO ROUGH OPENING ON HEAD IF ALSO INTENDED TO BE AN AIR BARRIER.**

REV 180702

## TYPICAL WINDOW HEAD (RECESSED) PEBBLETEX CI-DCA

SCALE: NTS

23

Structure, substrates, flashing, and other items which are not part of the BASF *Pebbletex CI-DCA* system are the responsibility of others. This detail is subject to change without notice. BASF Corporation - Wall Systems (herein after BASF Wall Systems) accepts no liability for the end use of this detail. For conditions not shown, consult BASF Wall Systems for review of specific detail.

■ - BASF

We create chemistry

FRAMING\*

ACCEPTABLE SHEATHING\*

FINESTOP RA/FINESTOP RS/  
FINESTOP VB

APPROVED EPS INSULATION BOARD

FINESTONE ADHESIVE / BASE COAT  
APPLIED TO EPS INSULATION BOARD

FINESTONE LAMINA:  
FINESTONE BASE COAT  
FINESTONE REINFORCING MESH  
FINESTONE FINISH COAT

MAXFLASH, SHEATHING FABRIC  
EMBEDDED IN FINESTOP RA; RS; VB,  
OR WS FLASH w/ FLASHING PRIMER

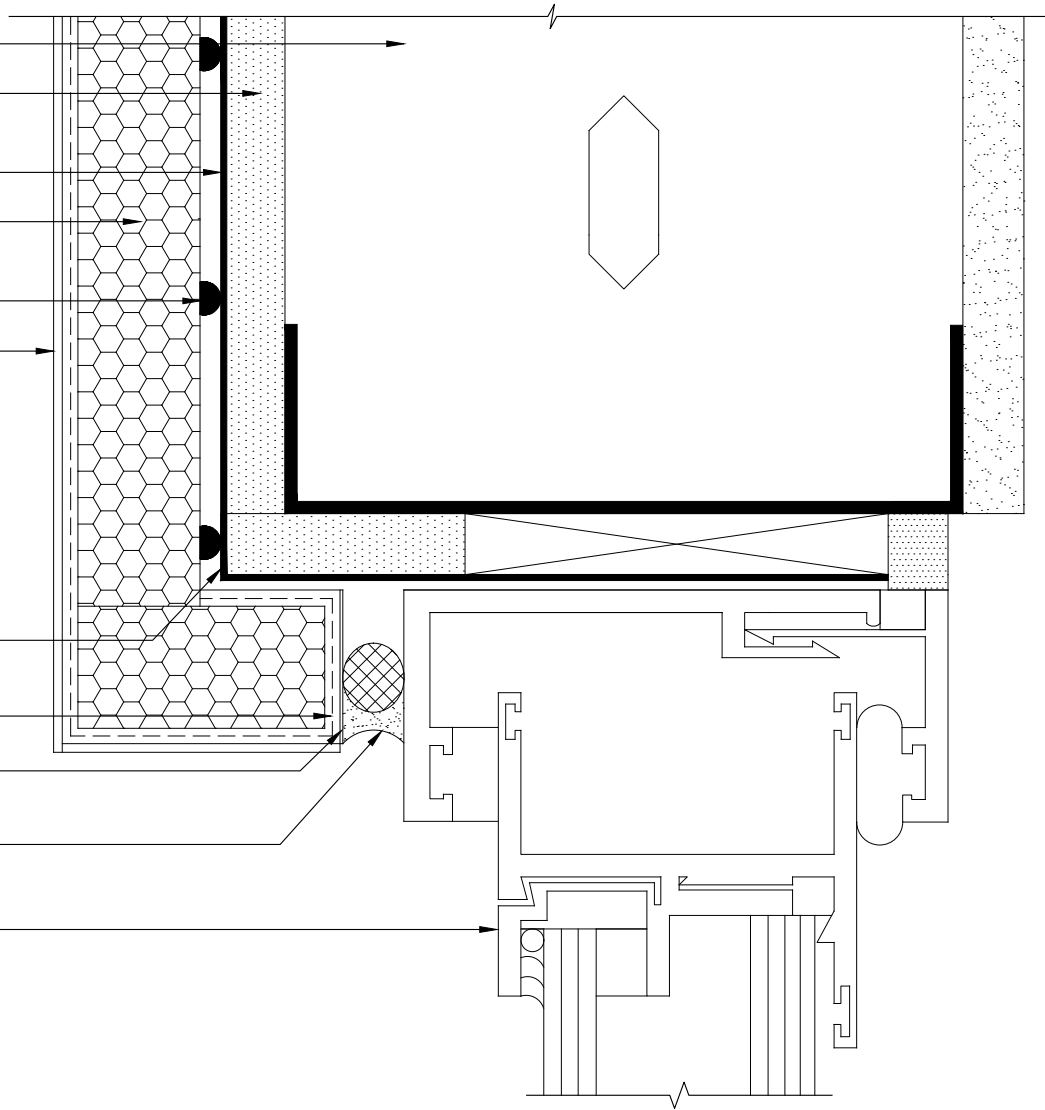
WRAP BASE COAT AND  
REINFORCING MESH

BASF COLOR COAT  
(OPTIONAL)

BACKER ROD AND SEALANT  
(WIDTH PER DESIGN)\*

WINDOW\*

\*BY OTHERS



REV 180702

## TYPICAL WINDOW JAMB (RECESSED)

### PEBBLETEX CI-DCA

SCALE: NTS

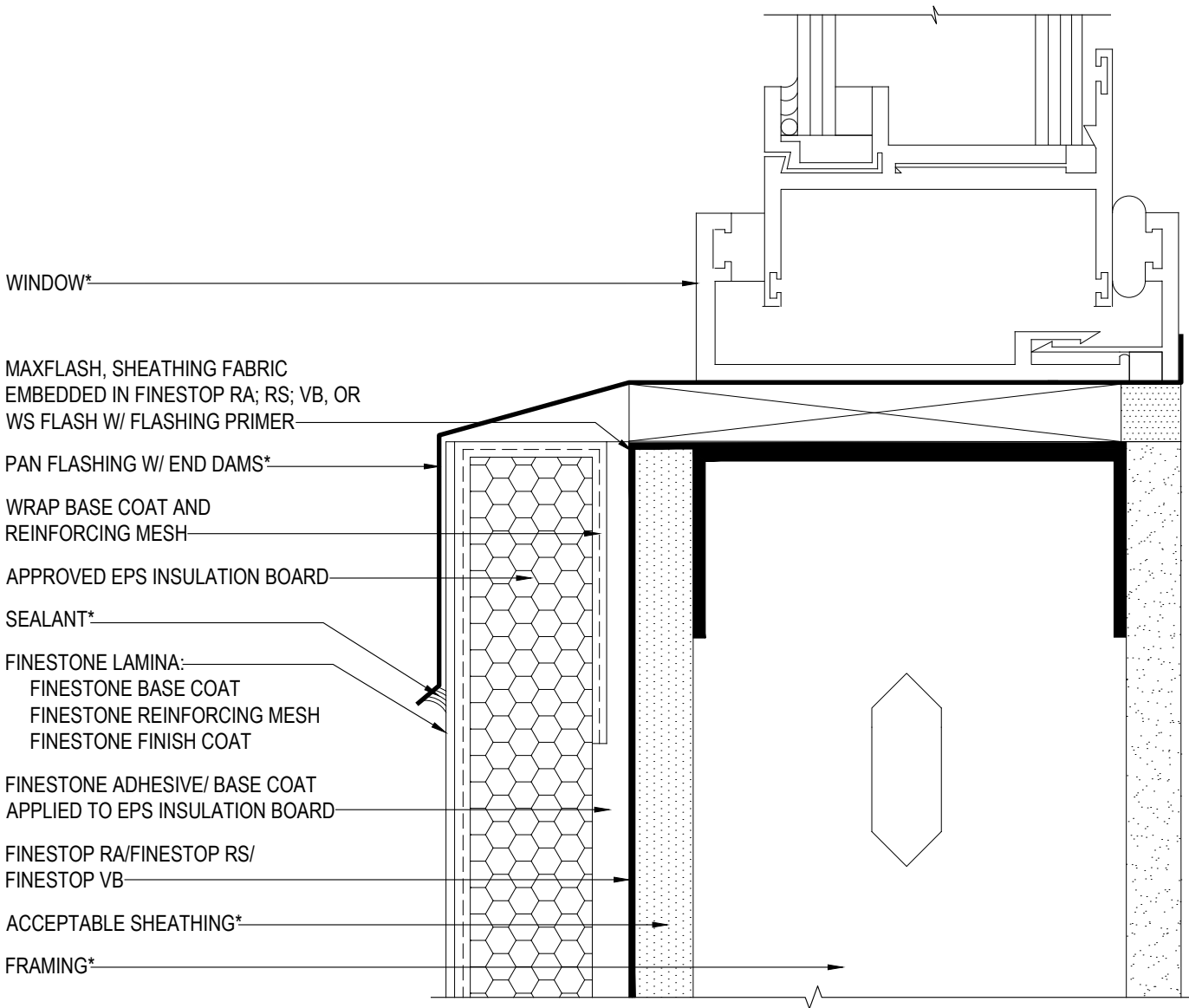
24

Structure, substrates, flashing, and other items which are not part of the BASF *Pebbletex CI-DCA* system are the responsibility of others. This detail is subject to change without notice. BASF Corporation - Wall Systems (herein after BASF Wall Systems) accepts no liability for the end use of this detail. For conditions not shown, consult BASF Wall Systems for review of specific detail.

■ - BASF

We create chemistry





WINDOW\*

MAXFLASH, SHEATHING FABRIC  
EMBEDDED IN FINESTOP RA; RS; VB, OR  
WS FLASH W/ FLASHING PRIMER

PAN FLASHING W/ END DAMS\*

WRAP BASE COAT AND  
REINFORCING MESH

APPROVED EPS INSULATION BOARD

SEALANT\*

FINESTONE LAMINA:  
FINESTONE BASE COAT  
FINESTONE REINFORCING MESH  
FINESTONE FINISH COAT

FINESTONE ADHESIVE/ BASE COAT  
APPLIED TO EPS INSULATION BOARD

FINESTOP RA/FINESTOP RS/  
FINESTOP VB

ACCEPTABLE SHEATHING\*

FRAMING\*

\*BY OTHERS

NOTE:

- EXTEND FLASHING MIN 2" (50 mm)  
OVER PEBBLETEX CI-DCA DESIGN
- FLASHINGS ARE BY OTHERS AND  
SHALL BE INSTALLED PER DESIGN /  
CODE REQUIREMENT

REV 180203

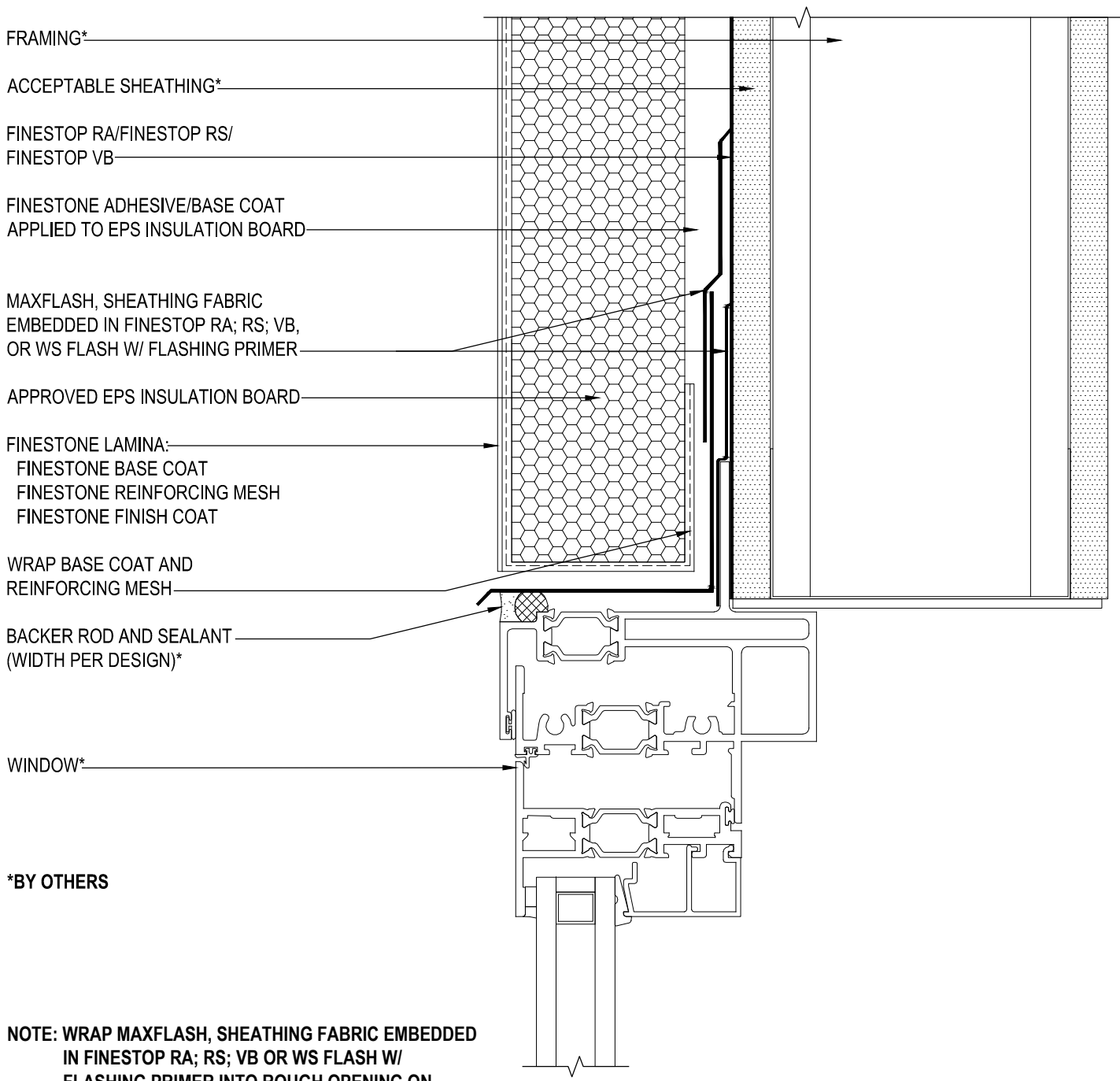
## TYPICAL WINDOW SILL DETAIL (RECESSED) PEBBLETEX CI-DCA

SCALE: NTS

25

Structure, substrates, flashing, and other items which are not part of the BASF *Pebbletex CI-DCA* system are the responsibility of others. This detail is subject to change without notice. BASF Corporation - Wall Systems (herein after BASF Wall Systems) accepts no liability for the end use of this detail. For conditions not shown, consult BASF Wall Systems for review of specific detail.





\*BY OTHERS

**NOTE: WRAP MAXFLASH, SHEATHING FABRIC EMBEDDED IN FINESTOP RA; RS; VB OR WS FLASH W/ FLASHING PRIMER INTO ROUGH OPENING ON HEAD IF ALSO INTENDED TO BE AN AIR BARRIER.**

REV 180702

## TYPICAL FLANGED WINDOW HEAD PEBBLETEx CI-DCA

SCALE: NTS  
**26**

Structure, substrates, flashing, and other items which are not part of the BASF *Pebbletex CI-DCA* system are the responsibility of others. This detail is subject to change without notice. BASF Corporation - Wall Systems (herein after BASF Wall Systems) accepts no liability for the end use of this detail. For conditions not shown, consult BASF Wall Systems for review of specific detail.



ACCEPTABLE SHEATHING\*

APPROVED EPS INSULATION BOARD

FINESTONE ADHESIVE/BASE COAT  
APPLIED TO EPS INSULATION BOARD

FINESTOP RA/FINESTOP RS/  
FINESTOP VB

FRAMING\*

FINESTONE LAMINA:  
FINESTONE BASE COAT  
FINESTONE REINFORCING MESH  
FINESTONE FINISH COAT

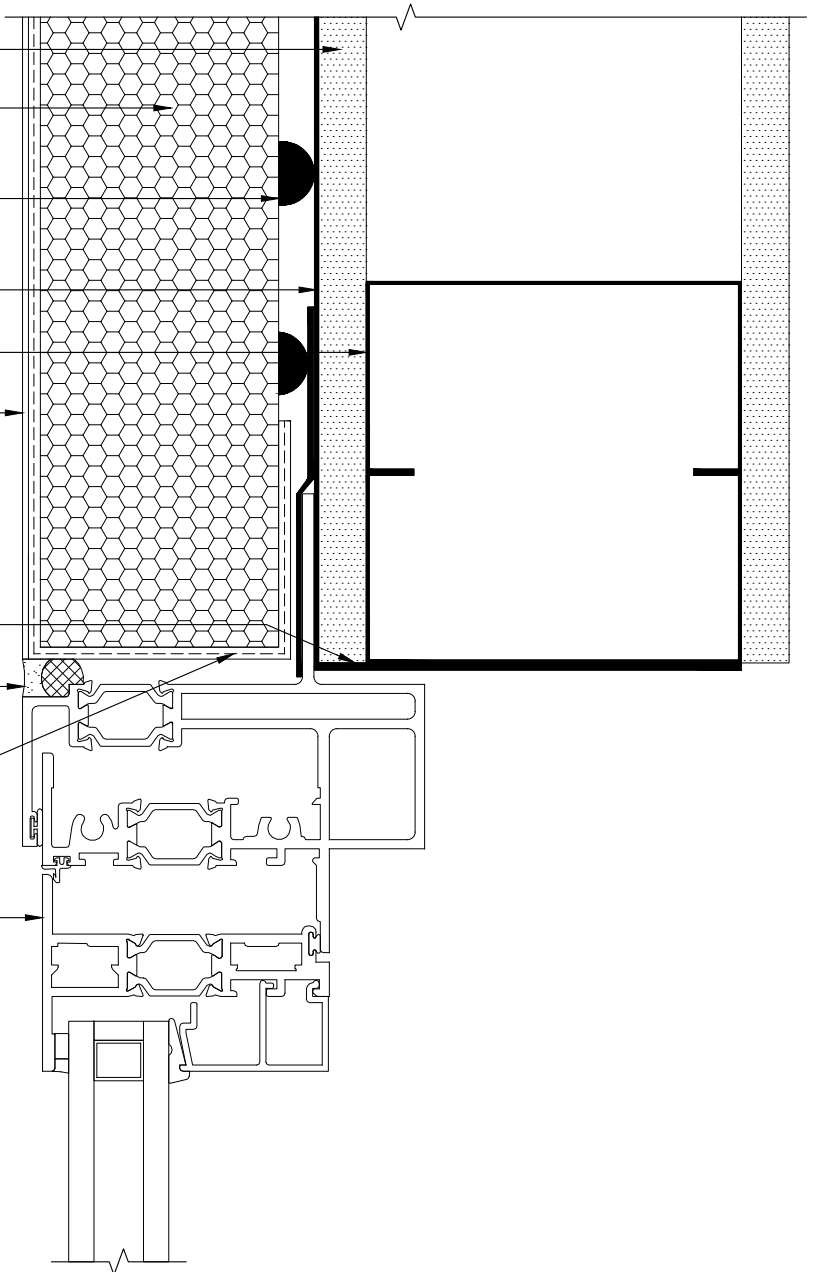
MAXFLASH, SHEATHING FABRIC  
EMBEDDED IN FINESTOP RA; RS; VB,  
OR WS FLASH W/ FLASHING PRIMER

BACKER ROD AND SEALANT\*  
(WIDTH PER DESIGN)\*

WRAP BASE COAT AND  
REINFORCING MESH

WINDOW\*

\*BY OTHERS



REV 180203

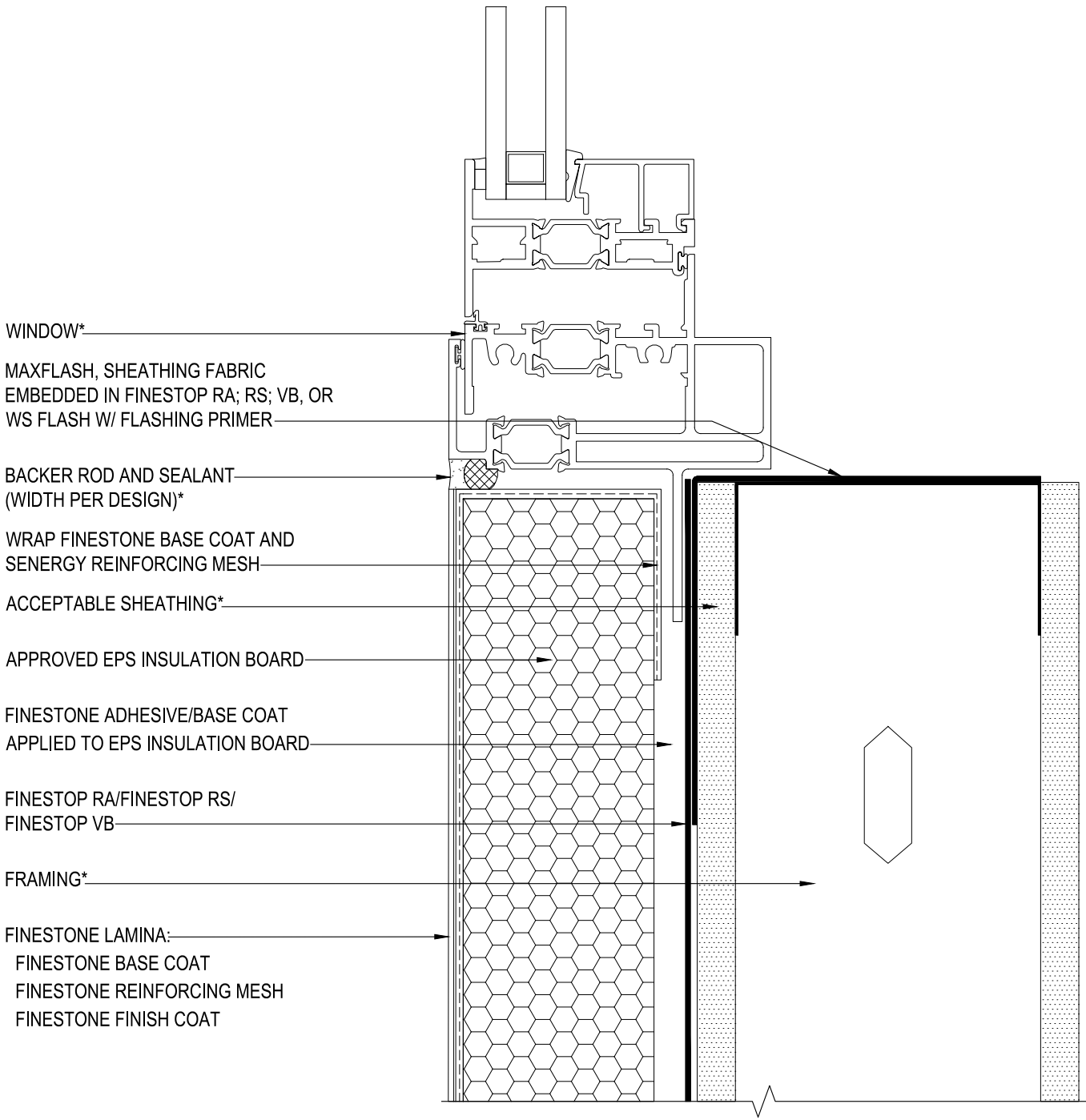
## TYPICAL FLANGED WINDOW JAMB PEBBLETEx CI-DCA

SCALE: NTS

27

Structure, substrates, flashing, and other items which are not part of the BASF *Pebbletex CI-DCA* system are the responsibility of others. This detail is subject to change without notice. BASF Corporation - Wall Systems (herein after BASF Wall Systems) accepts no liability for the end use of this detail. For conditions not shown, consult BASF Wall Systems for review of specific detail.

**BASF**  
We create chemistry



\*BY OTHERS

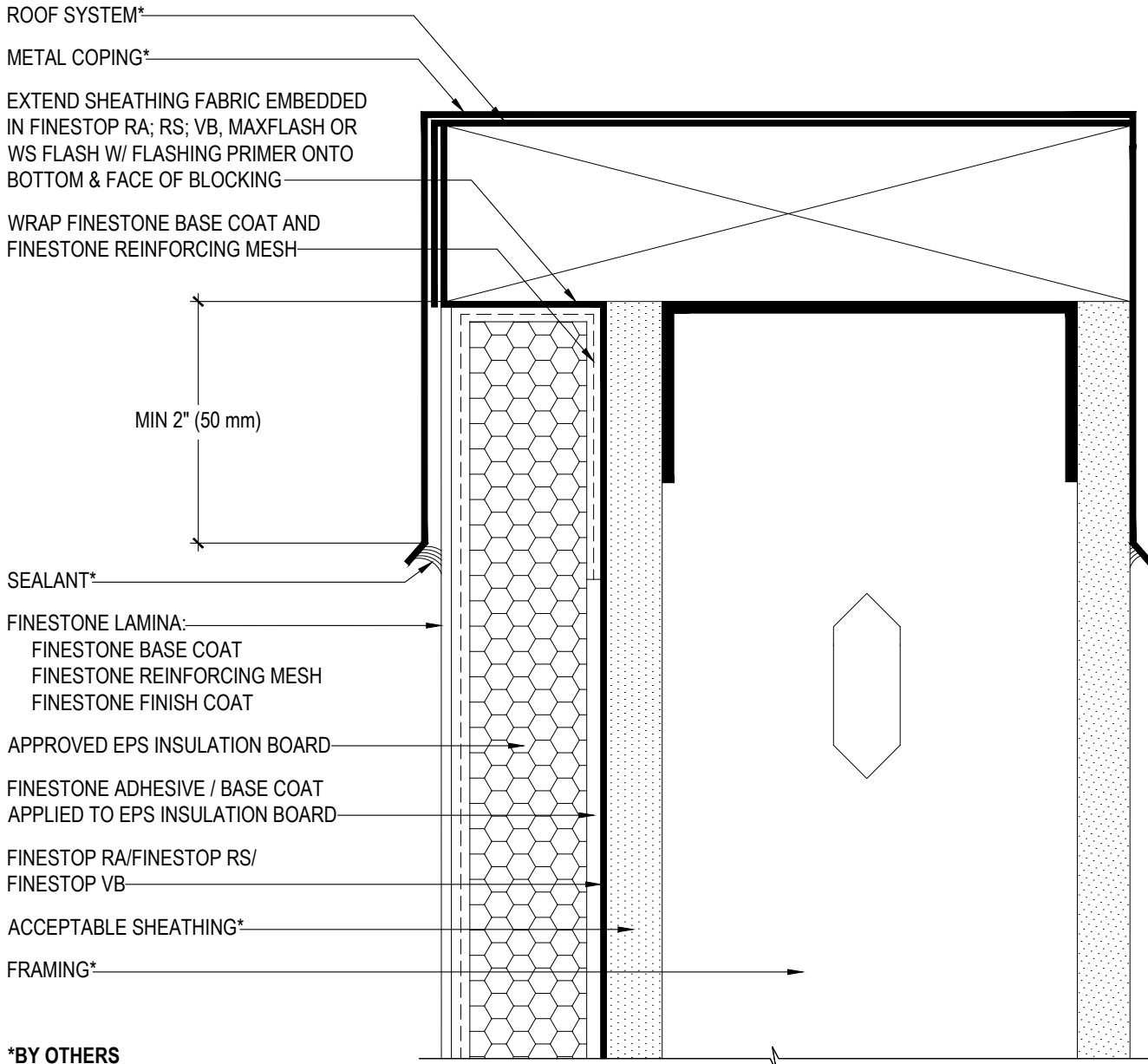
REV 180702

## TYPICAL FLANGED WINDOW SILL PEBBLETEX CI-DCA

SCALE: NTS  
**28**

Structure, substrates, flashing, and other items which are not part of the BASF *Pebbletex CI-DCA* system are the responsibility of others. This detail is subject to change without notice. BASF Corporation - Wall Systems (herein after BASF Wall Systems) accepts no liability for the end use of this detail. For conditions not shown, consult BASF Wall Systems for review of specific detail.





SEALANT\*

FINESTONE LAMINA:  
 FINESTONE BASE COAT  
 FINESTONE REINFORCING MESH  
 FINESTONE FINISH COAT

APPROVED EPS INSULATION BOARD

FINESTONE ADHESIVE / BASE COAT  
 APPLIED TO EPS INSULATION BOARD

FINESTOP RA/FINESTOP RS/  
 FINESTOP VB

ACCEPTABLE SHEATHING\*

FRAMING\*

\*BY OTHERS

REV 180702

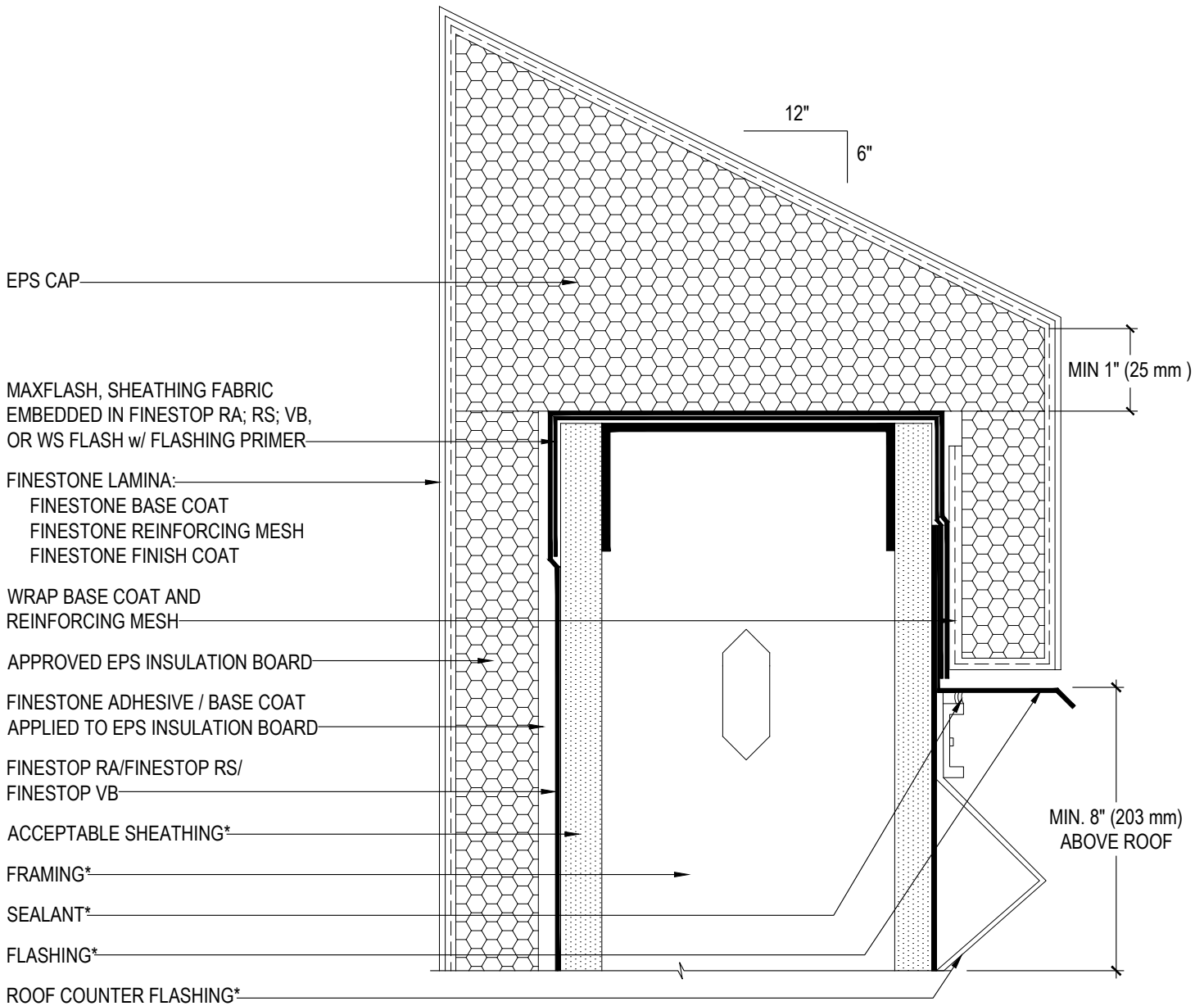
## TYPICAL METAL COPING DETAIL PEBBLETEX CI-DCA

SCALE: NTS

29

Structure, substrates, flashing, and other items which are not part of the BASF *Pebbletex CI-DCA* system are the responsibility of others. This detail is subject to change without notice. BASF Corporation - Wall Systems (herein after BASF Wall Systems) accepts no liability for the end use of this detail. For conditions not shown, consult BASF Wall Systems for review of specific detail.

**BASF**  
 We create chemistry



\*BY OTHERS

REV 180203

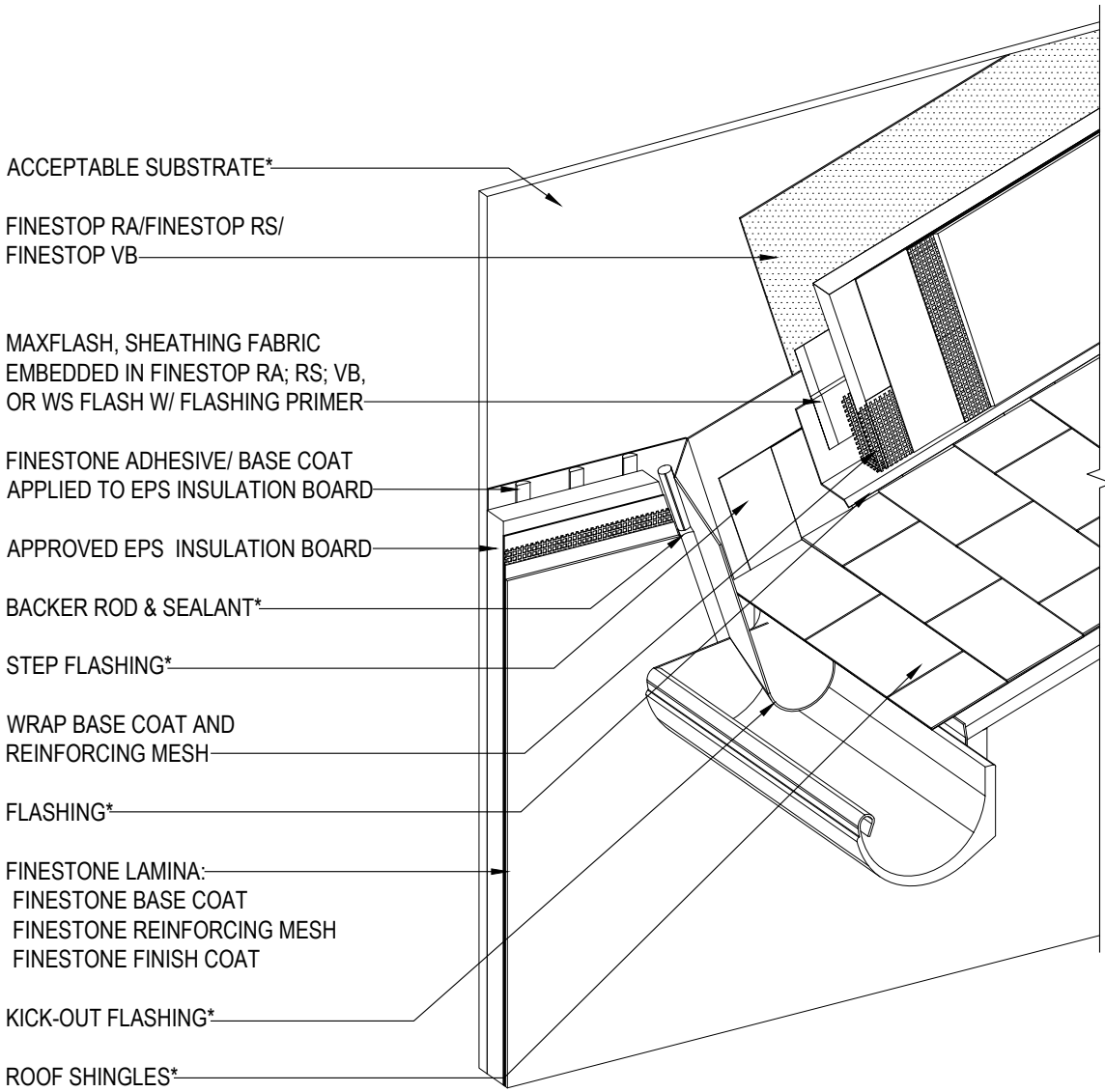
## TYPICAL PARAPET CAP DETAIL PEBBLETEX CI-DCA

SCALE: NTS

30

Structure, substrates, flashing, and other items which are not part of the BASF *Pebbletex CI-DCA* system are the responsibility of others. This detail is subject to change without notice. BASF Corporation - Wall Systems (herein after BASF Wall Systems) accepts no liability for the end use of this detail. For conditions not shown, consult BASF Wall Systems for review of specific detail.

**BASF**  
 We create chemistry



ACCEPTABLE SUBSTRATE\*

FINESTOP RA/FINESTOP RS/  
FINESTOP VB

MAXFLASH, SHEATHING FABRIC  
EMBEDDED IN FINESTOP RA; RS; VB,  
OR WS FLASH W/ FLASHING PRIMER

FINESTONE ADHESIVE/ BASE COAT  
APPLIED TO EPS INSULATION BOARD

APPROVED EPS INSULATION BOARD

BACKER ROD & SEALANT\*

STEP FLASHING\*

WRAP BASE COAT AND  
REINFORCING MESH

FLASHING\*

FINESTONE LAMINA:  
FINESTONE BASE COAT  
FINESTONE REINFORCING MESH  
FINESTONE FINISH COAT

KICK-OUT FLASHING\*

ROOF SHINGLES\*

\*BY OTHERS

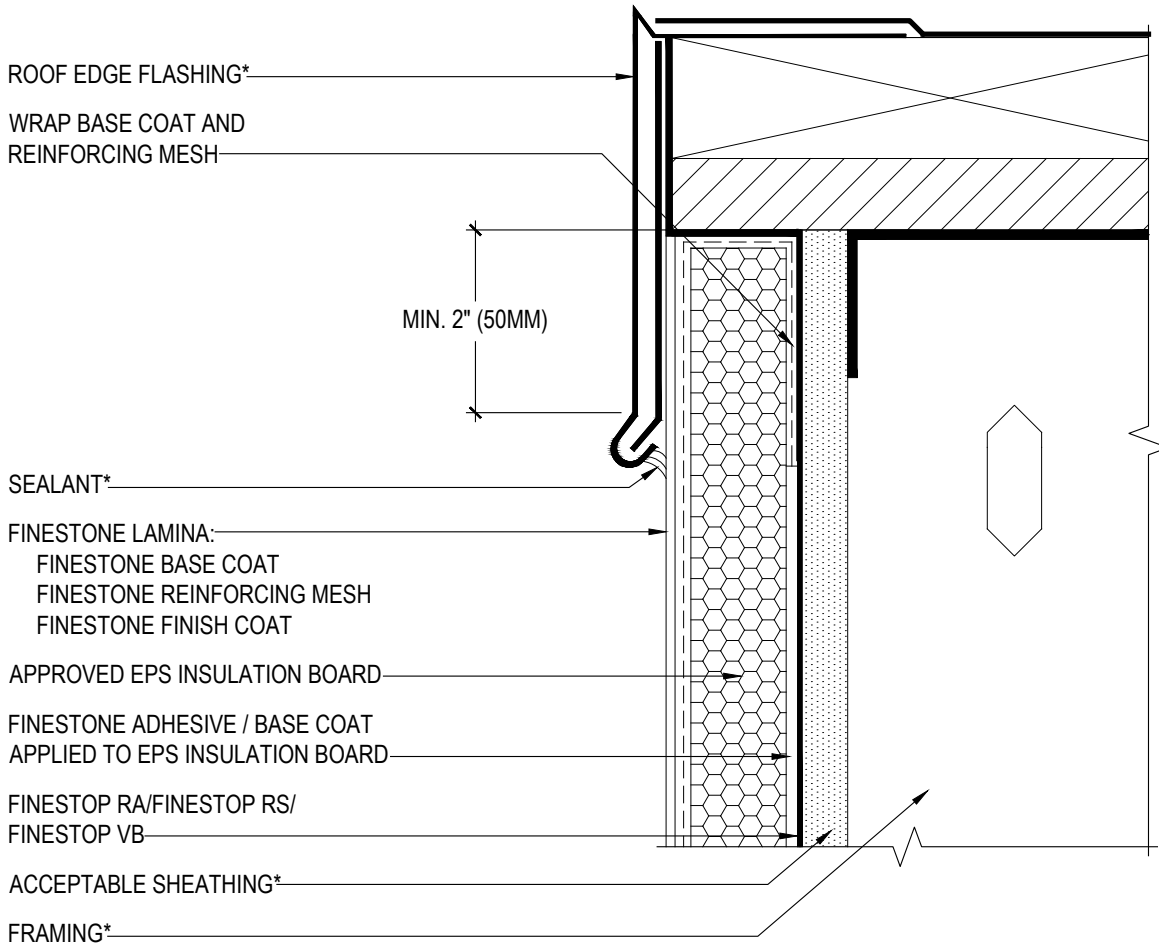
REV 180203

## TYPICAL KICK-OUT FLASHING PEBBLETEX CI-DCA

SCALE: NTS  
**31**

Structure, substrates, flashing, and other items which are not part of the BASF *Pebbletex CI-DCA* system are the responsibility of others. This detail is subject to change without notice. BASF Corporation - Wall Systems (herein after BASF Wall Systems) accepts no liability for the end use of this detail. For conditions not shown, consult BASF Wall Systems for review of specific detail.





\*BY OTHERS

REV 180702

## TYPICAL ROOF EDGE FLASHING DETAIL PEBBLETEX CI-DCA

SCALE: NTS

32

Structure, substrates, flashing, and other items which are not part of the BASF *Pebbletex CI-DCA* system are the responsibility of others. This detail is subject to change without notice. BASF Corporation - Wall Systems (herein after BASF Wall Systems) accepts no liability for the end use of this detail. For conditions not shown, consult BASF Wall Systems for review of specific detail.

■ - BASF

We create chemistry



FRAMING\*

ACCEPTABLE SHEATHING\*

FINESTOP RA/FINESTOP RS/  
FINESTOP VB

FINESTONE ADHESIVE/ BASE COAT  
APPLIED TO EPS INSULATION BOARD

MAXFLASH, SHEATHING FABRIC  
EMBEDDED IN FINESTOP RA; RS; VB,  
OR WS FLASH W/ FLASHING PRIMER

APPROVED EPS INSULATION BOARD

FINESTONE LAMINA:  
FINESTONE BASE COAT  
FINESTONE REINFORCING MESH  
FINESTONE FINISH COAT

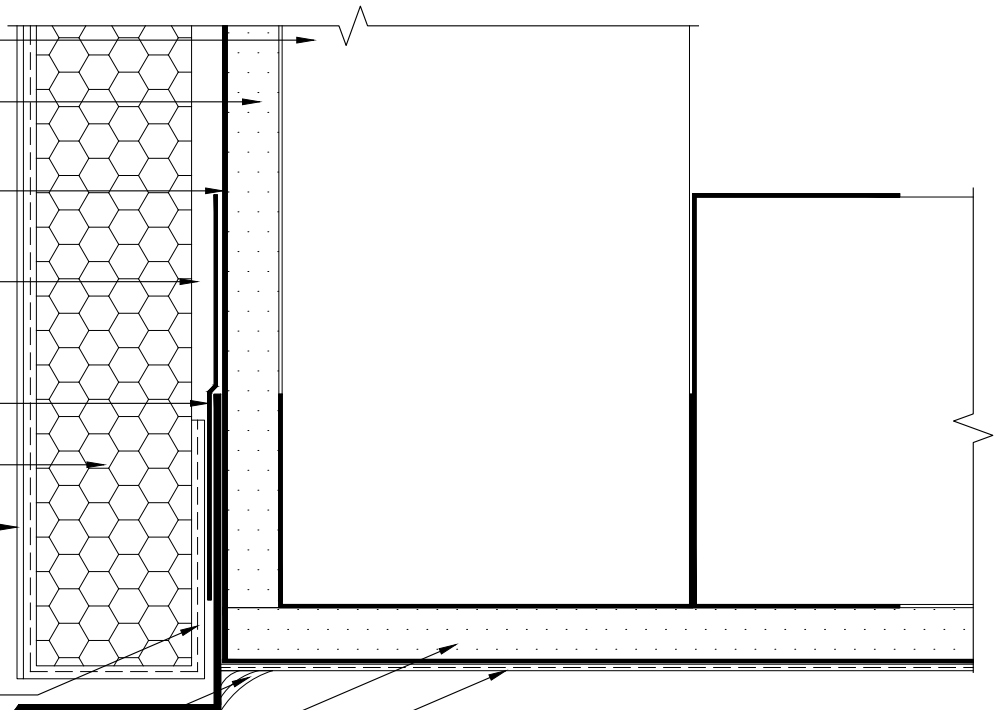
WRAP FINESTONE BASE COAT AND  
FINESTONE REINFORCING MESH

FLASHING\*

SEALANT\*

ACCEPTABLE SHEATHING\*

FINESTONE LAMINA:  
FINESTONE BASE COAT  
FINESTONE REINFORCING MESH  
FINESTONE FINISH COAT



\*BY OTHERS

REV 180702

## TYPICAL SECTION AT FASCIA / SOFFIT

### PEBBLETEX CI-DCA

SCALE: NTS

33

Structure, substrates, flashing, and other items which are not part of the BASF *Pebbletex CI-DCA* system are the responsibility of others. This detail is subject to change without notice. BASF Corporation - Wall Systems (herein after BASF Wall Systems) accepts no liability for the end use of this detail. For conditions not shown, consult BASF Wall Systems for review of specific detail.

**BASF**  
We create chemistry

RAILING\*

RAILING BASE COVER SET IN SEALANT\*

BACKER ROD & SEALANT  
(WIDTH PER DESIGN)\*

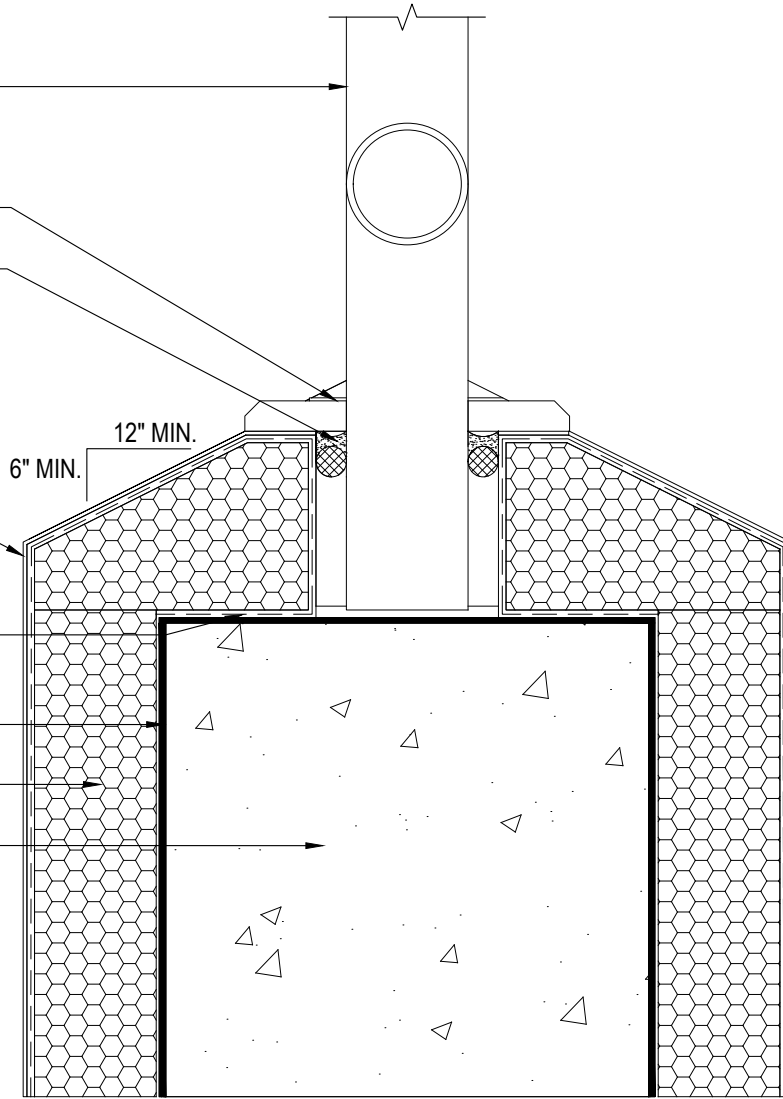
FINESTONE LAMINA:  
FINESTONE BASE COAT  
FINESTONE REINFORCING MESH  
FINESTONE FINISH COAT

WRAP BASE COAT AND  
REINFORCING MESH

FINESTOP RA/FINESTOP RS/  
FINESTOP VB

APPROVED EPS INSULATION BOARD

ACCEPTABLE SUBSTRATE\*



\*BY OTHERS

REV 180702

## TYPICAL CORE MOUNTED RAILING ATTACHMENT PEBBLETEX CI-DCA

SCALE: NTS

34

Structure, substrates, flashing, and other items which are not part of the BASF *Pebbletex CI-DCA* system are the responsibility of others. This detail is subject to change without notice. BASF Corporation - Wall Systems (herein after BASF Wall Systems) accepts no liability for the end use of this detail. For conditions not shown, consult BASF Wall Systems for review of specific detail.

**BASF**  
We create chemistry

FRAMING\*

ACCEPTABLE SHEATHING \*

FINESTOP RA/FINESTOP RS/  
FINESTOP VB

FINESTONE ADHESIVE/ BASE COAT  
APPLIED TO EPS INSULATION BOARD

APPROVED EPS INSULATION BOARD

FINESTONE LAMINA:  
FINESTONE BASE COAT  
FINESTONE REINFORCING MESH  
FINESTONE FINISH COAT

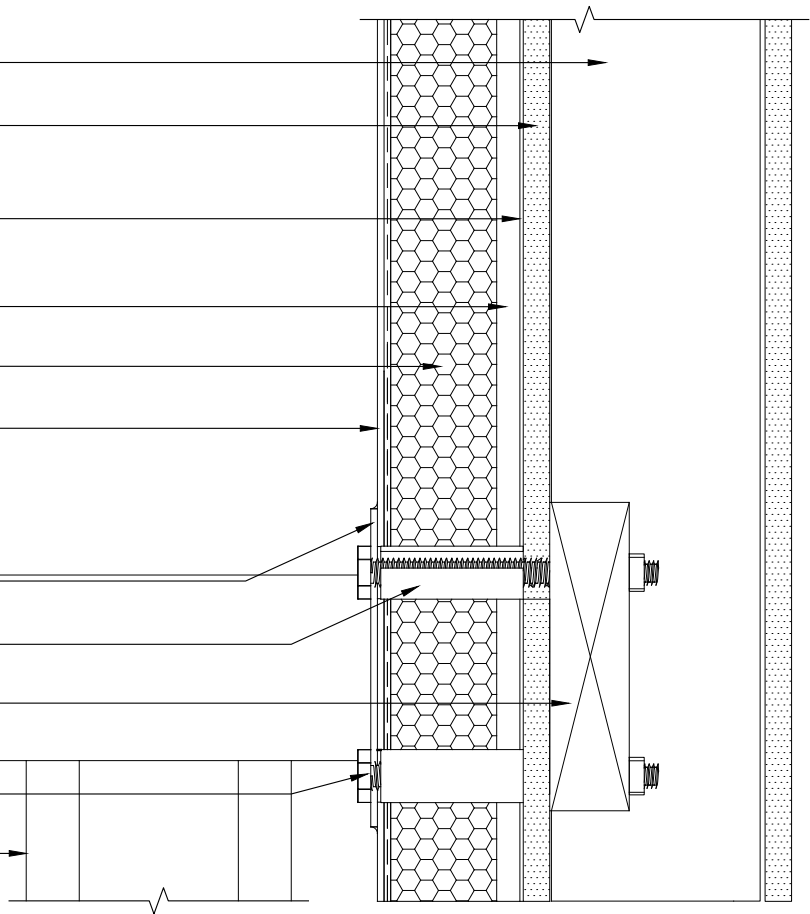
MOUNTING BRACKET SET IN SEALANT\*

SLEEVE SET IN SEALANT\*

WOOD BLOCKING\*

MECHANICAL FASTENER SET IN  
SEALANT\*

RAILING\*



\*BY OTHERS

REV 180203

## TYPICAL RAILING ATTACHMENT PEBBLETEX CI-DCA

SCALE: NTS

35

Structure, substrates, flashing, and other items which are not part of the BASF *Pebbletex CI-DCA* system are the responsibility of others. This detail is subject to change without notice. BASF Corporation - Wall Systems (herein after BASF Wall Systems) accepts no liability for the end use of this detail. For conditions not shown, consult BASF Wall Systems for review of specific detail.

■ - BASF

We create chemistry

FRAMING\*

ACCEPTABLE SHEATHING\*

FINESTOP RA/FINESTOP RS/  
FINESTOP VB

FINESTONE ADHESIVE/ BASE COAT  
APPLIED TO EPS INSULATION BOARD

APPROVED EPS INSULATION BOARD

FINESTONE LAMINA:  
FINESTONE BASE COAT  
FINESTONE REINFORCING MESH  
FINESTONE FINISH COAT

SIGN\*

SLEEVE SET IN SEALANT\*

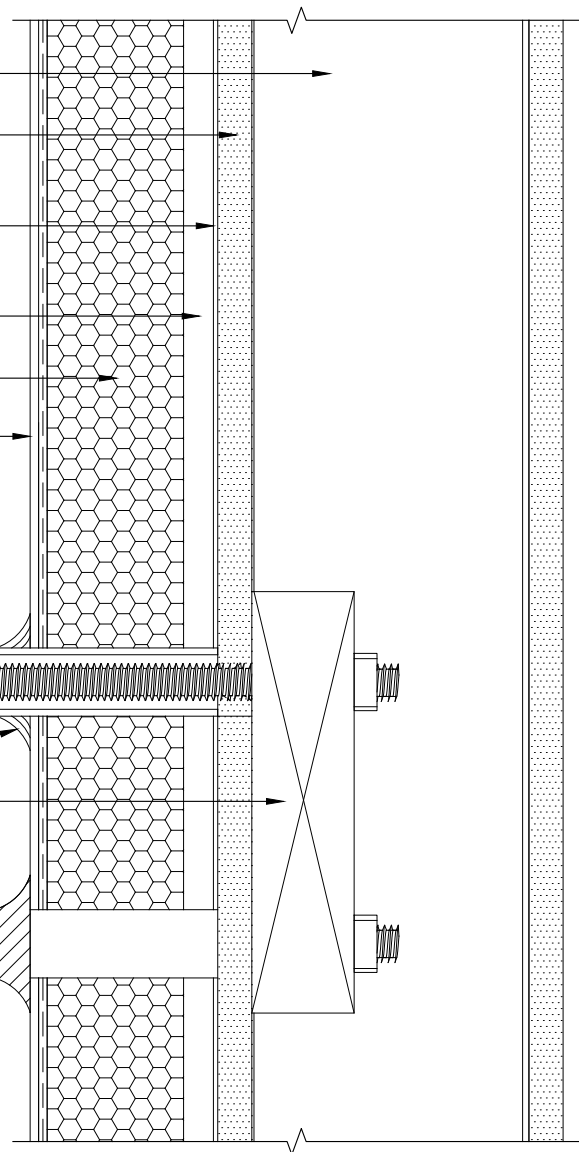
SEALANT AT PERIMETER OF  
PENETRATION\*

WOOD BLOCKING\*

MOUNTING BRACKET\*

MECHANICAL FASTENER SET IN  
SEALANT\*

WASHER\*



\*BY OTHERS

REV 180203

## TYPICAL SIGN ATTACHMENT PEBBLETEX CI-DCA

SCALE: NTS

36

Structure, substrates, flashing, and other items which are not part of the BASF *Pebbletex CI-DCA* system are the responsibility of others. This detail is subject to change without notice. BASF Corporation - Wall Systems (herein after BASF Wall Systems) accepts no liability for the end use of this detail. For conditions not shown, consult BASF Wall Systems for review of specific detail.

**BASF**  
We create chemistry