

# **Pebbletex Adhered Mat Design**

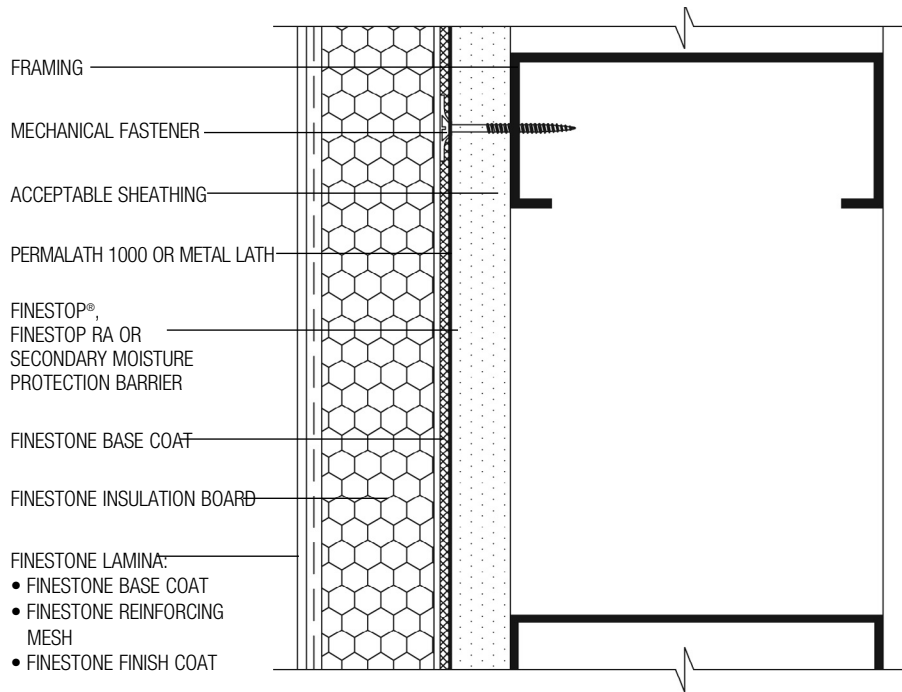
## **Typical Details**

(THIS PAGE INTENTIONALLY LEFT BLANK)

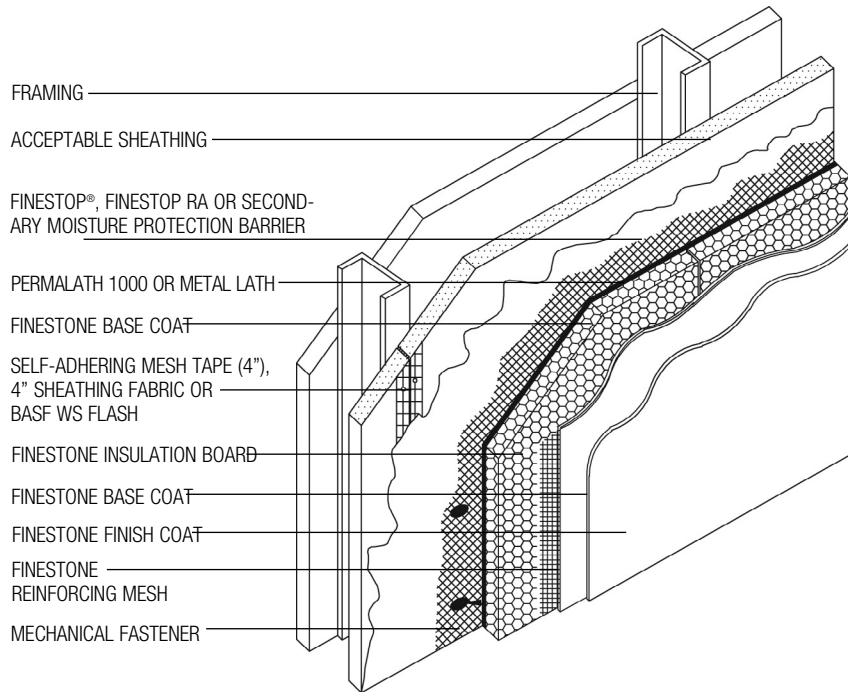
# Pebbletex Adhered Mat Design

## TABLE OF CONTENTS

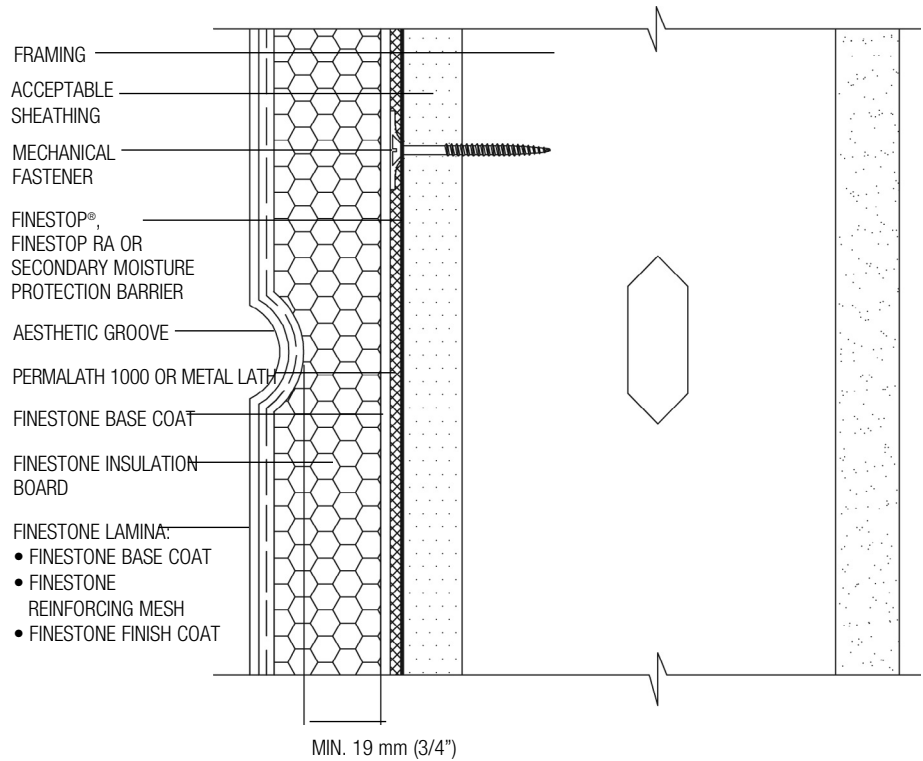
1. Pebbletex Adhered Mat Design Application (Plan View)
2. Pebbletex Adhered Mat Design (Isometric View)
3. Aesthetic Groove
4. Insulation Boards / Reinforcing Mesh Application at Openings
5. Window Head (Flush)
6. Window Head (Recessed)
7. Window Jamb Detail (Flush)
8. Window Jamb Detail (Recessed)
9. Window Sill Detail (Flush)
10. Window Sill Detail (Recessed)
11. Roof Edge Flashing Detail
12. Metal Coping Detail
13. Parapet Cap Detail
14. Expansion Joint Detail at Floorline
15. Expansion Joint at Change in Substrate
16. Section at Fascia/Soffit
17. Expansion Joint Detail
18. Pipe Penetration
19. Corner Mesh Application with STRONG 15 or HI-IMPACT 20 (Plan View)
20. Corner Mesh Application with Standard Mesh, INTERMEDIATE 6 or 12 (Plan View)
21. Light Fixture
22. Termination at Foundation
23. Termination at Foundation (Flush)
24. Kick-out Flashing Detail



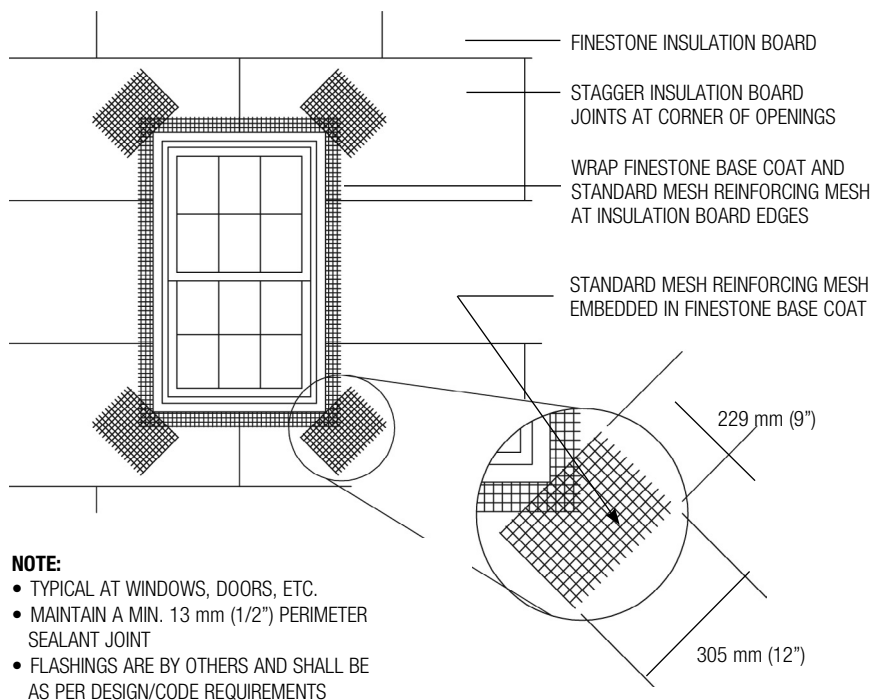
**AM-01 TYPICAL PEBBLETEX ADHERED MAT DESIGN APPLICATION (PLAN VIEW)**



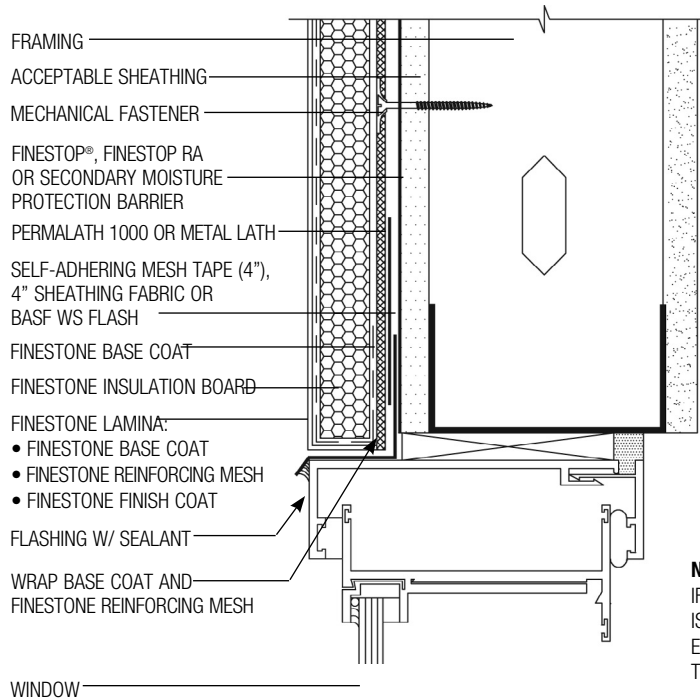
**AM-02 TYPICAL PEBBLETEX ADHERED MAT DESIGN (ISOMETRIC VIEW)**



**AM-03 TYPICAL AESTHETIC GROOVE (PLAN VIEW)**

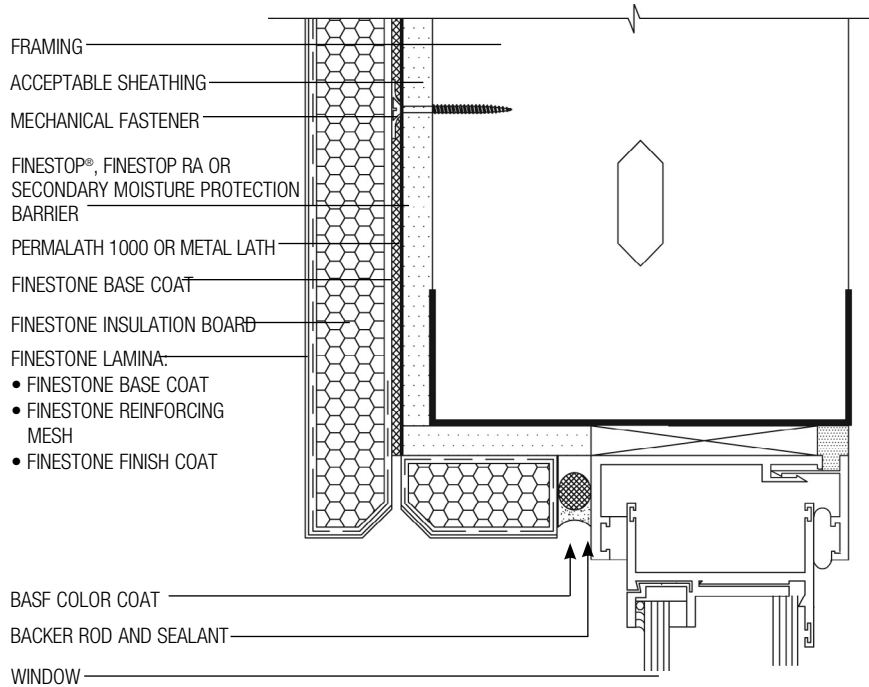


**AM-04 TYPICAL INSULATION BOARDS/REINFORCING MESH APPLICATION AT OPENINGS**

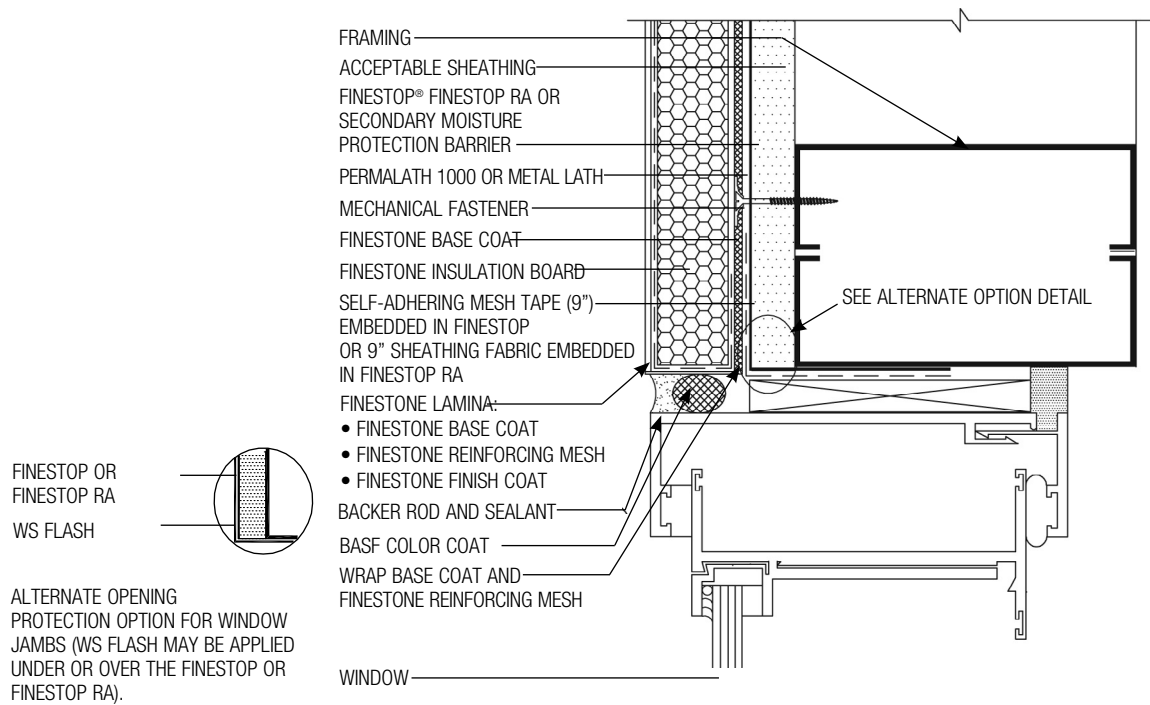


**NOTE:**  
IF SECONDARY MOISTURE PROTECTION BARRIER IS USED IN LIEU OF FINESTOP OR FINESTOP RA, ENSURE BARRIER IS PROPERLY LAPPED OVER THE FLASHING FLANGE.

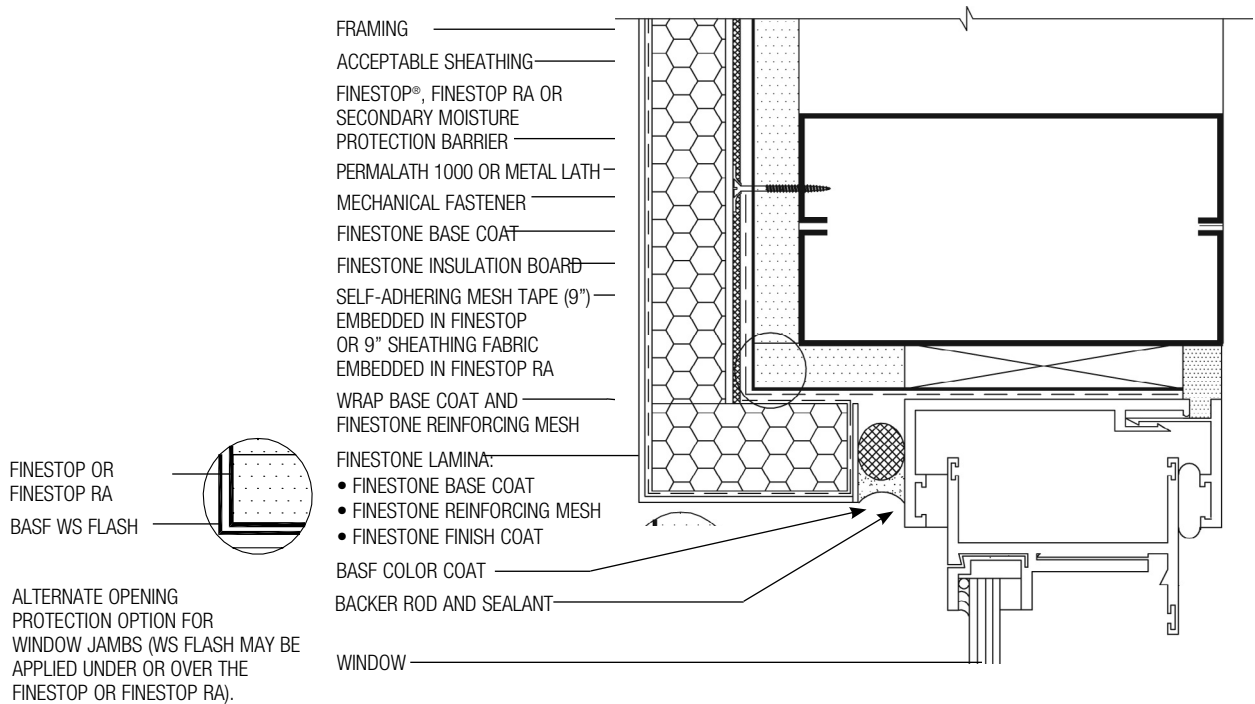
**AM-05 TYPICAL WINDOW HEAD (FLUSH)**



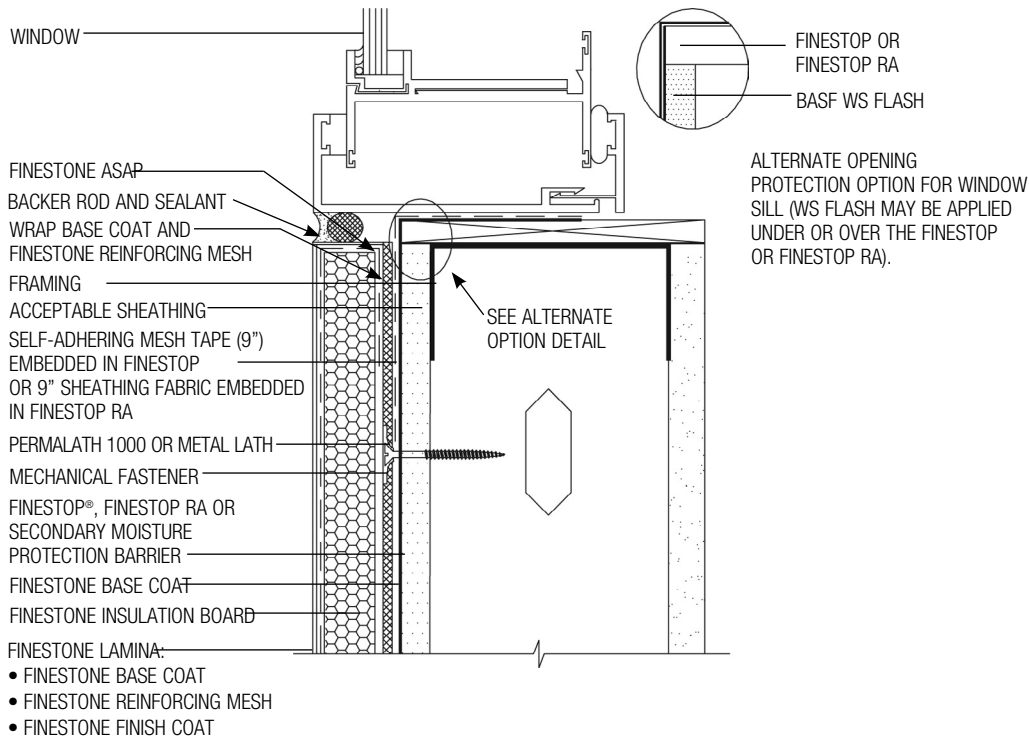
**AM-06 TYPICAL WINDOW HEAD (RECESSED)**



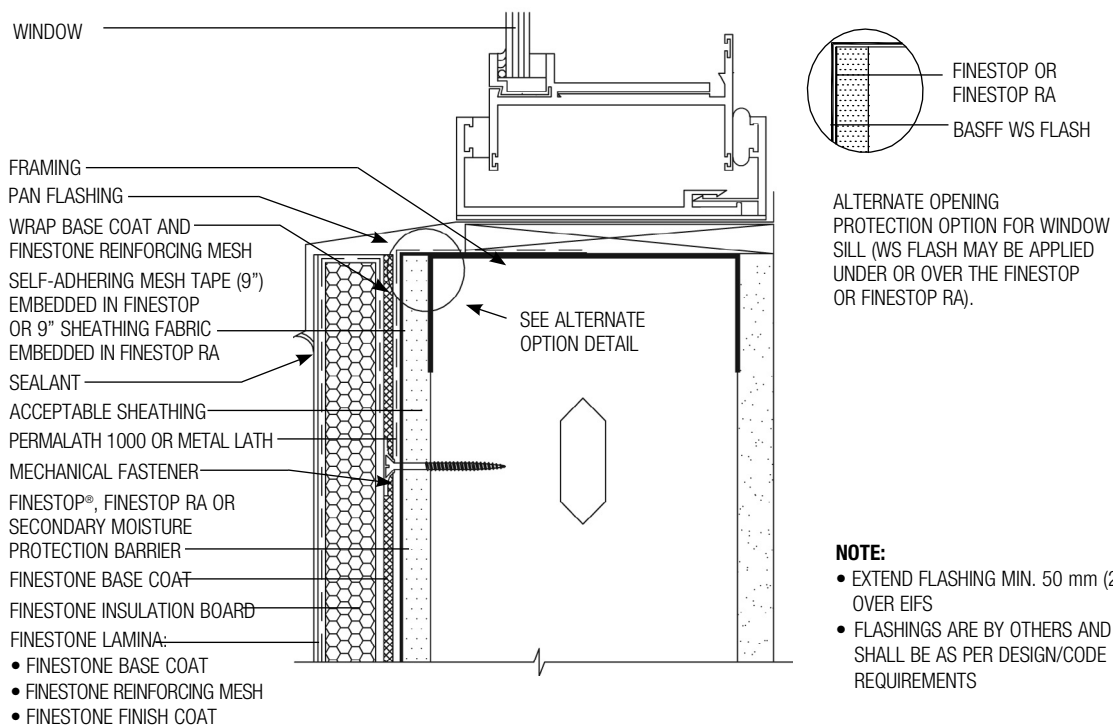
**AM-07 TYPICAL WINDOW JAMB DETAIL (FLUSH)**



**AM-08 TYPICAL WINDOW JAMB DETAIL (RECESSED)**

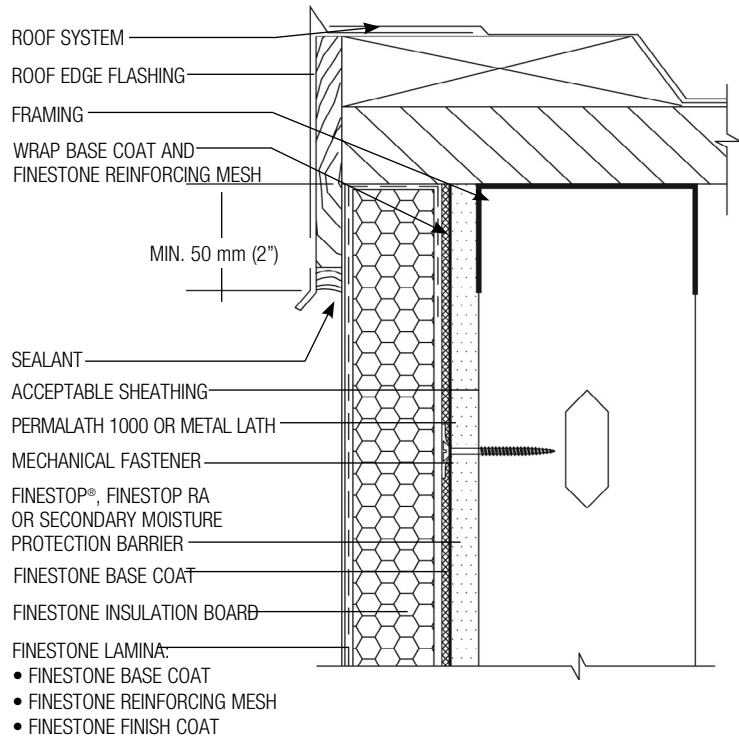


**AM-09 TYPICAL SILL DETAIL (FLUSH)**

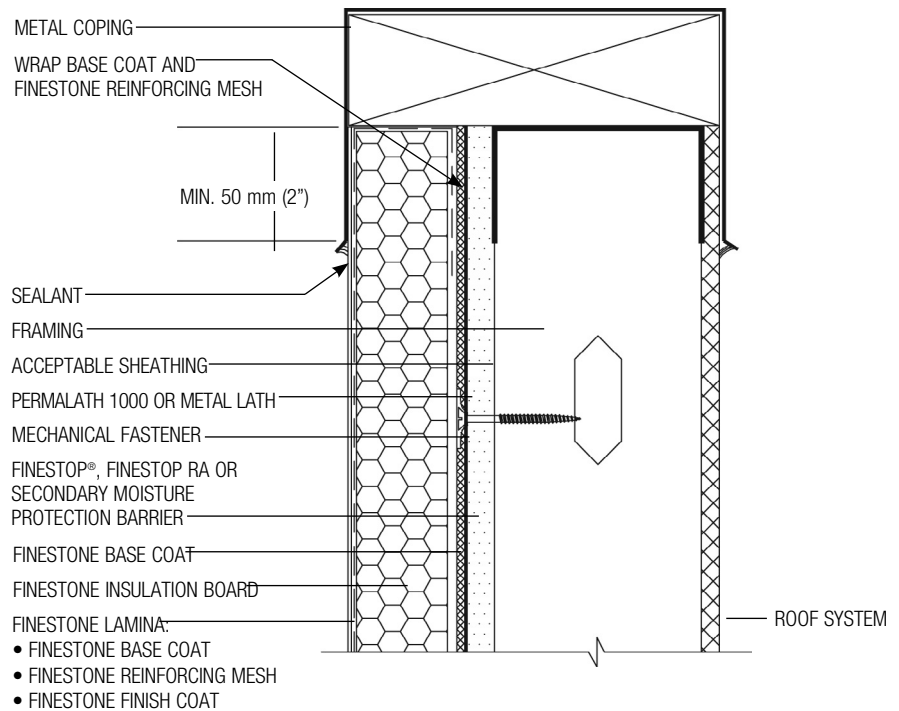


**AM-10 TYPICAL SILL DETAIL (RECESSED)**





**AM-11 TYPICAL ROOF EDGE FLASHING DETAIL**

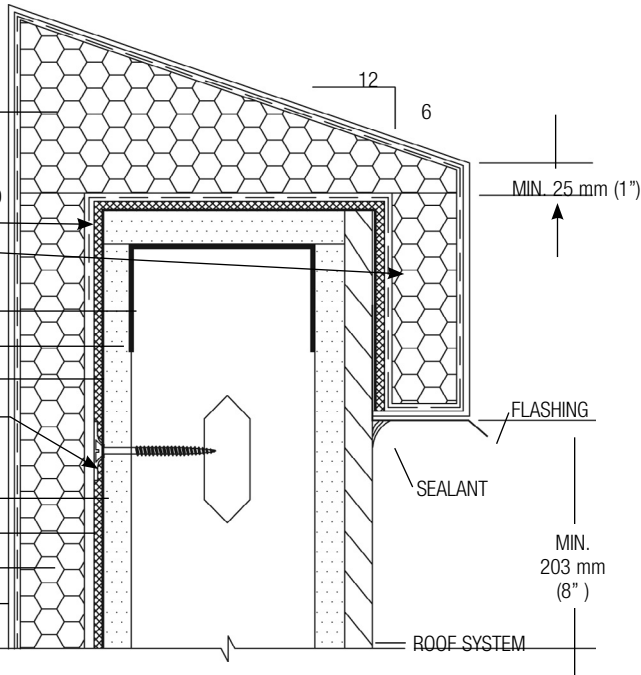


**AM-12 TYPICAL METAL COPING DETAIL**

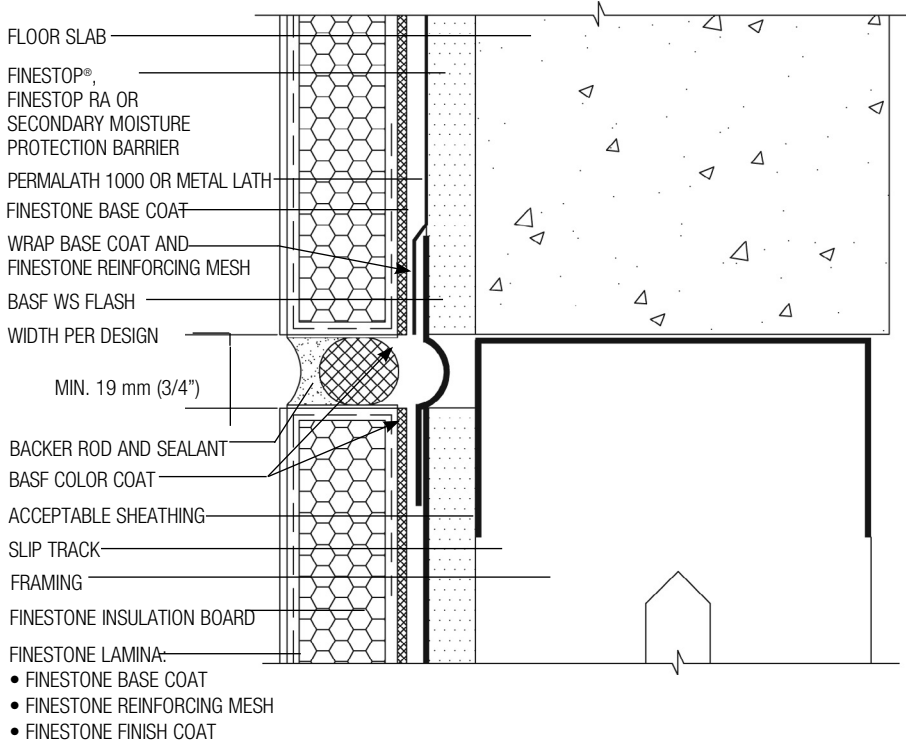
**NOTE:**

FLASHINGS ARE BY OTHERS AND SHALL BE AS PER DESIGN/CODE REQUIREMENTS

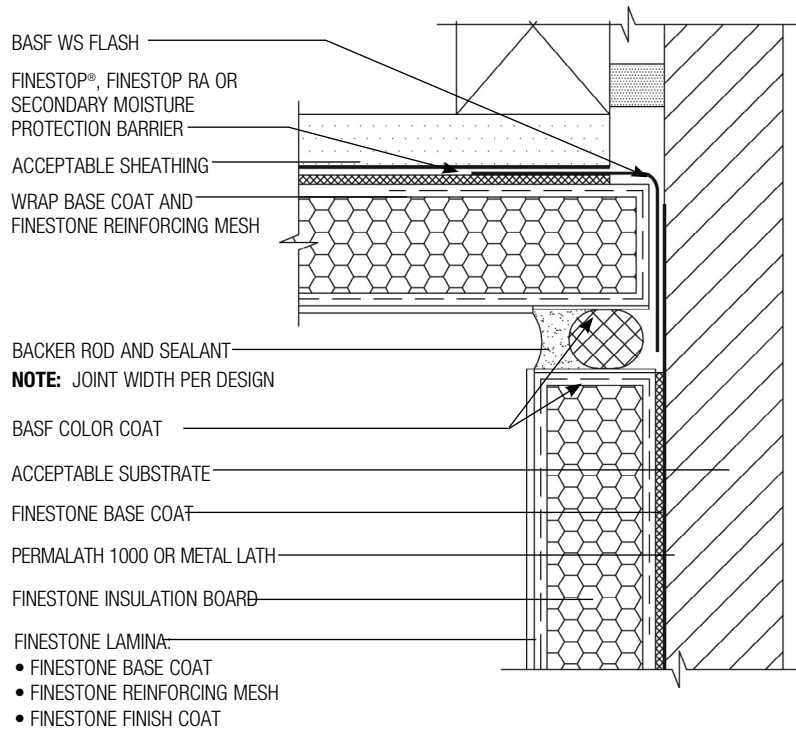
- EPS CAP
- SELF-ADHERING MESH TAPE (9") EMBEDDED IN FINESTOP OR 9" SHEATHING FABRIC EMBEDDED IN FINESTOP RA
- WRAP BASE COAT AND FINESTONE REINFORCING MESH
- FRAMING
- ACCEPTABLE SHEATHING
- PERMALATH 1000 OR METAL LATH
- MECHANICAL FASTENER
- FINESTOP®, FINESTOP RA OR SECONDARY MOISTURE PROTECTION BARRIER
- FINESTONE BASE COAT
- FINESTONE INSULATION BOARD
- FINESTONE LAMINA:
  - FINESTONE BASE COAT
  - FINESTONE REINFORCING MESH
  - FINESTONE FINISH COAT



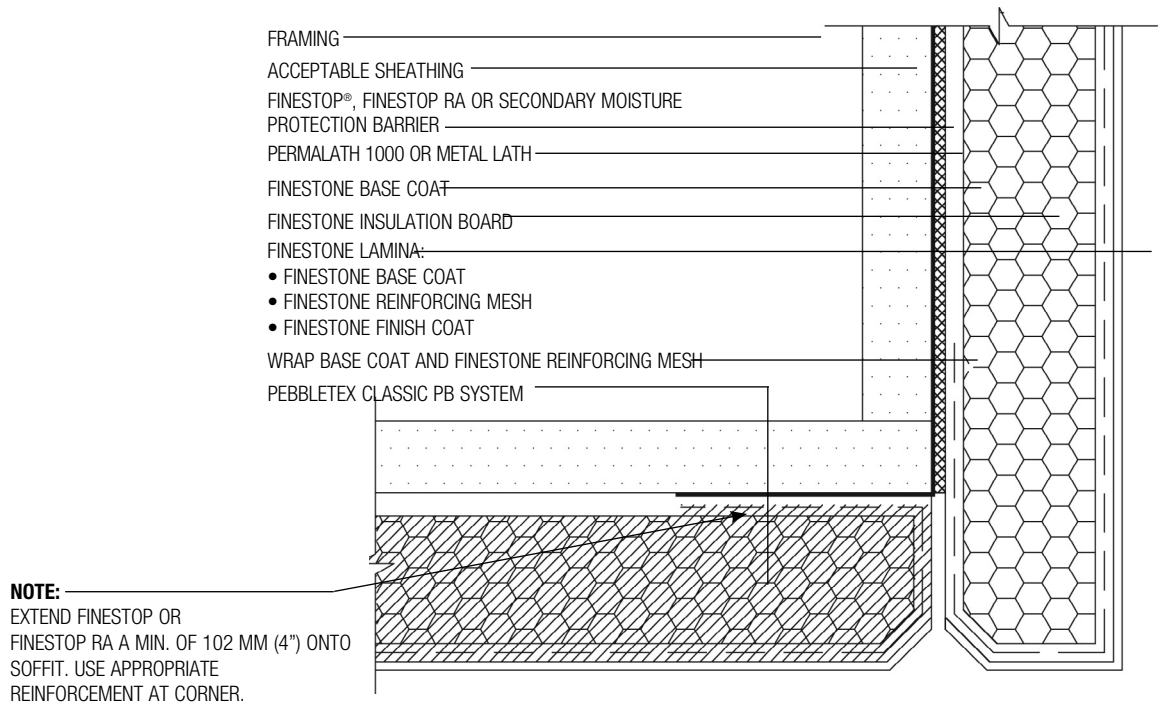
**AM-13 TYPICAL PARAPET CAP DETAIL**



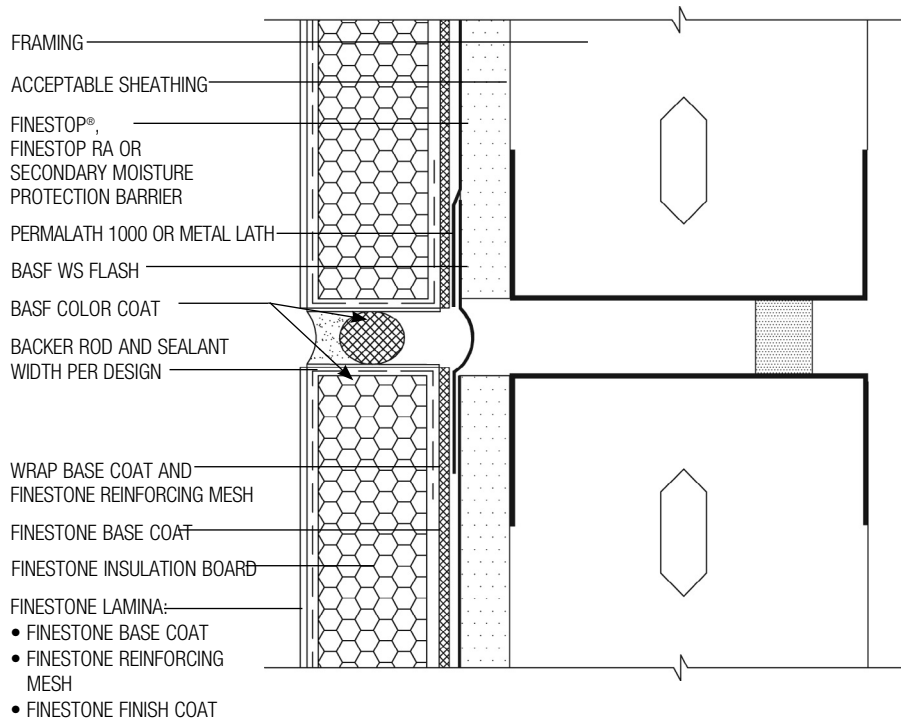
**AM-14 TYPICAL EXPANSION JOINT DETAIL AT FLOORLINE**



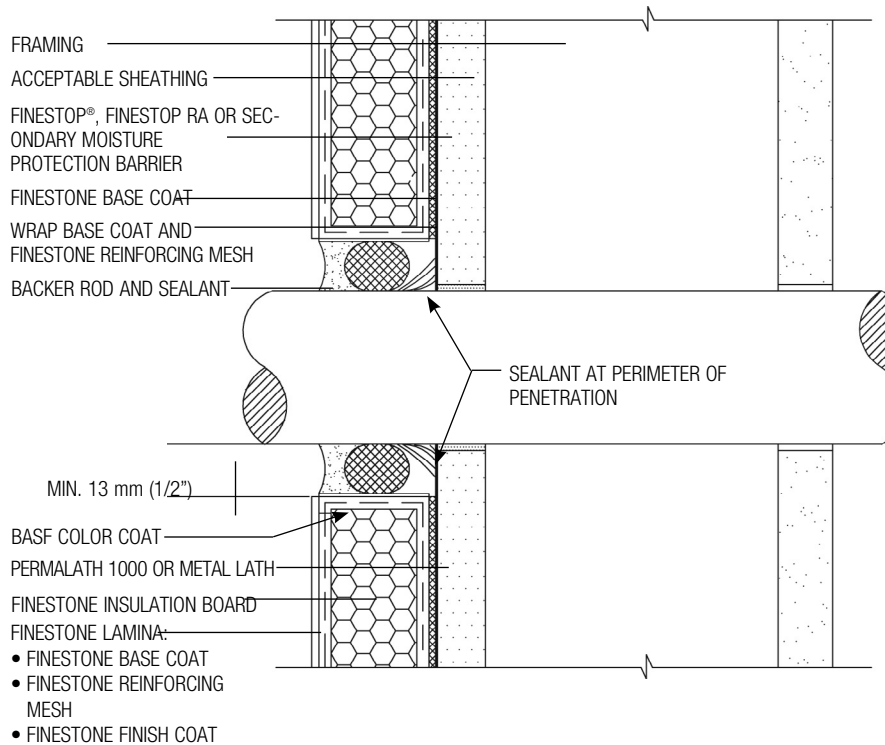
**AM-15 TYPICAL EXPANSION JOINT AT CHANGE IN SUBSTRATE**



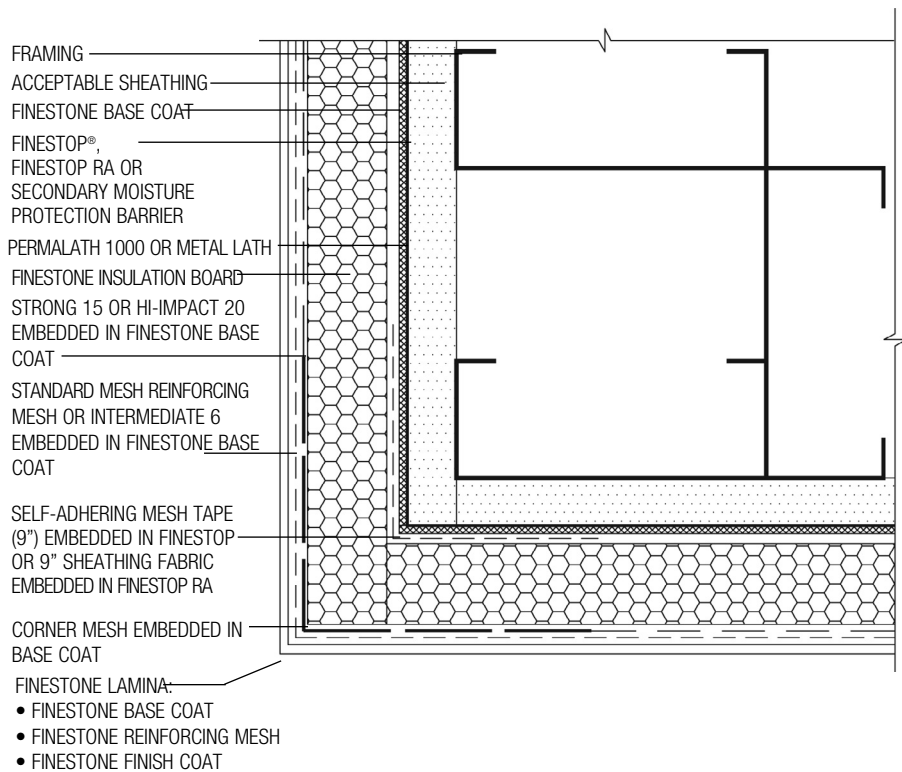
**AM-16 TYPICAL SECTION AT FASCIA/SOFFIT**



**AM-17 TYPICAL EXPANSION JOINT DETAIL**



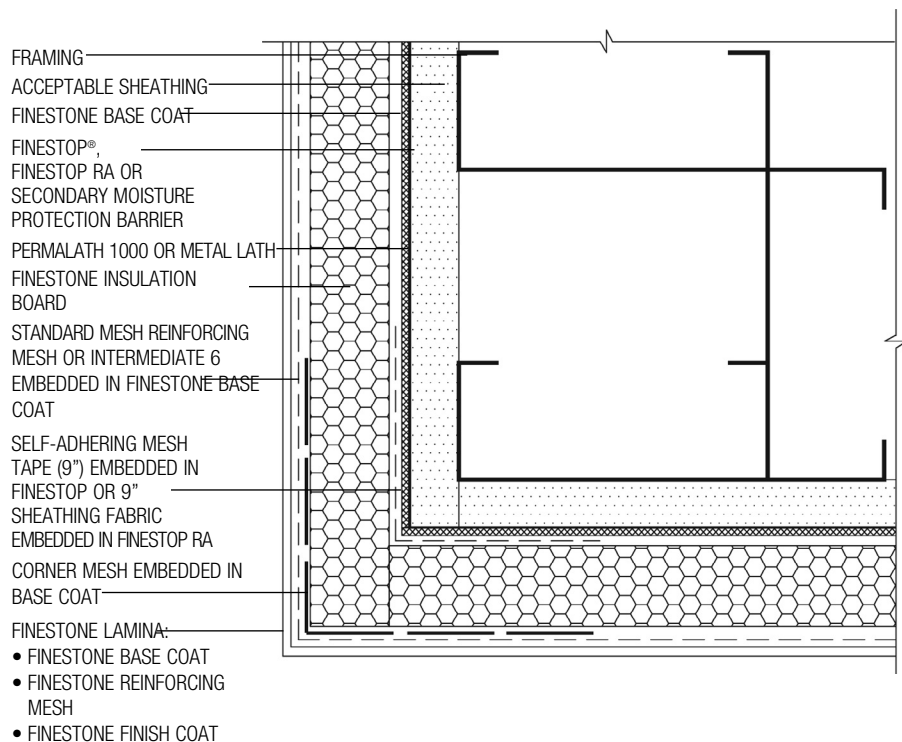
**AM-18 TYPICAL PIPE PENETRATION**



**NOTE:**

- BUTT EDGE OF STRONG 15 OR HI-IMPACT 20 TO CORNER MESH
- A CONTINUOUS OVERLAY OF STANDARD MESH OR INTERMEDIATE 6 IS REQUIRED OVER STRONG 15, HI-IMPACT 20 OR CORNER MESH.

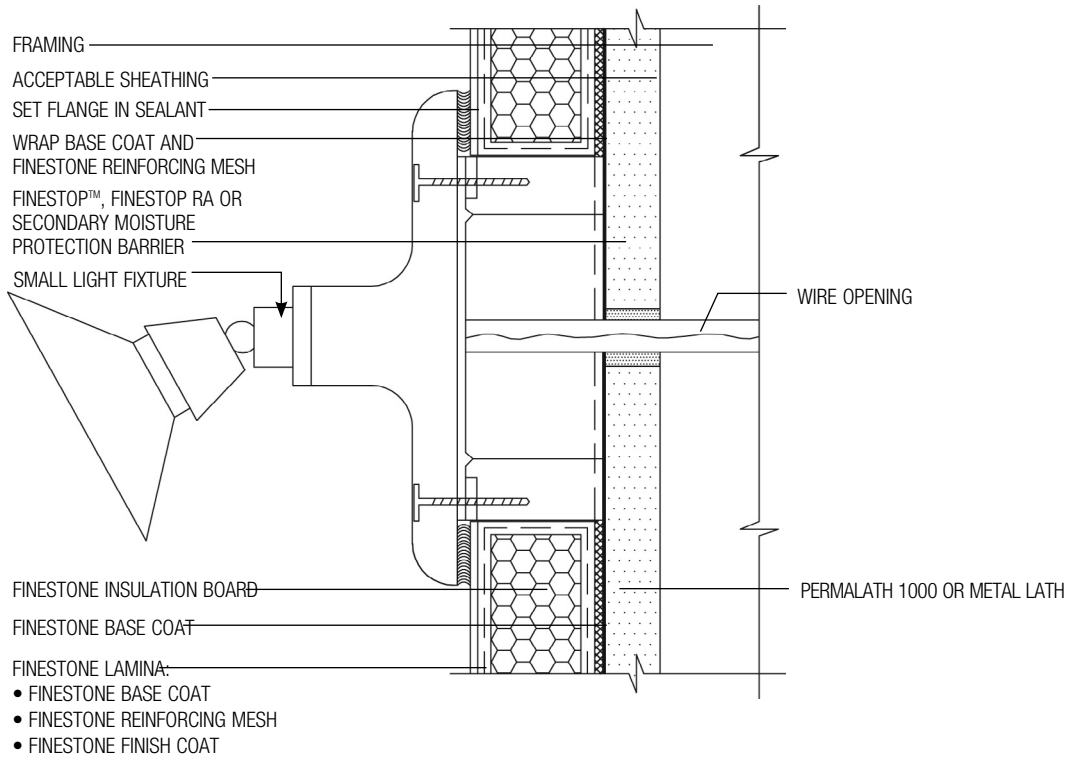
**AM-19 TYPICAL CORNER MESH APPLICATION WITH STRONG 15 OR HI-IMPACT 20 (PLAN VIEW)**



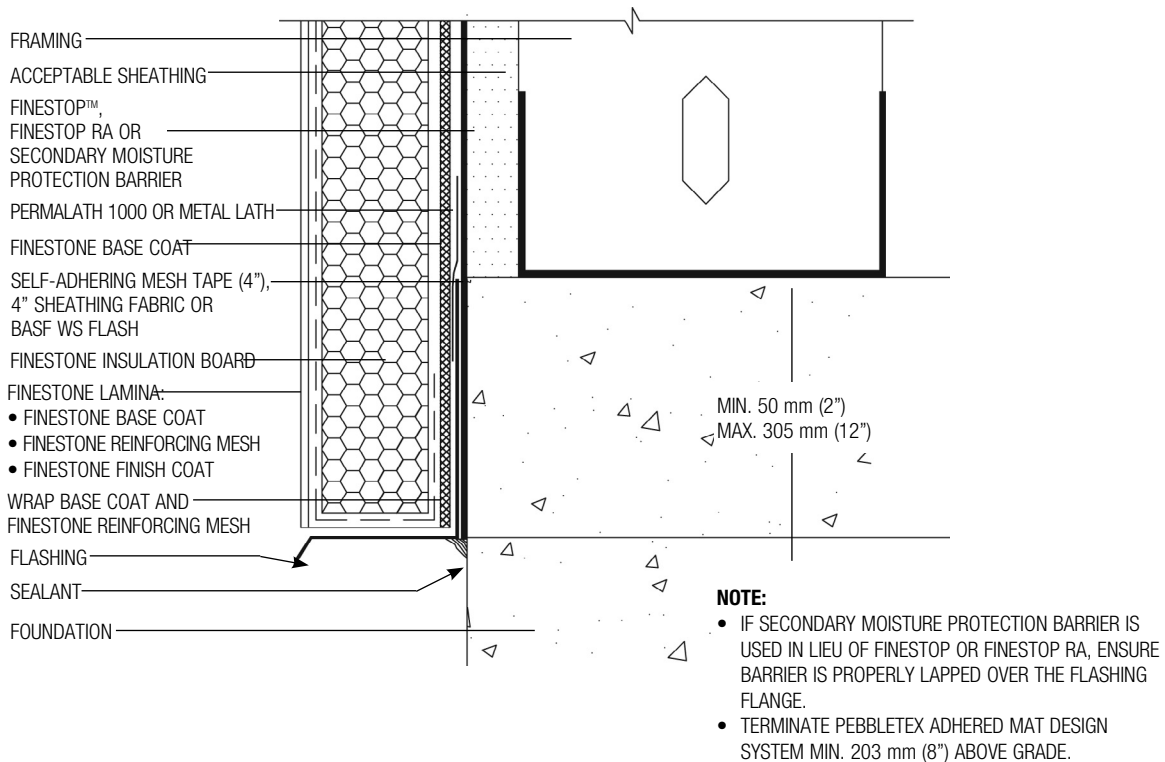
**NOTE:**

- A CONTINUOUS OVERLAY OF STANDARD MESH OR INTERMEDIATE 6 OR 12 IS REQUIRED OVER CORNER MESH.

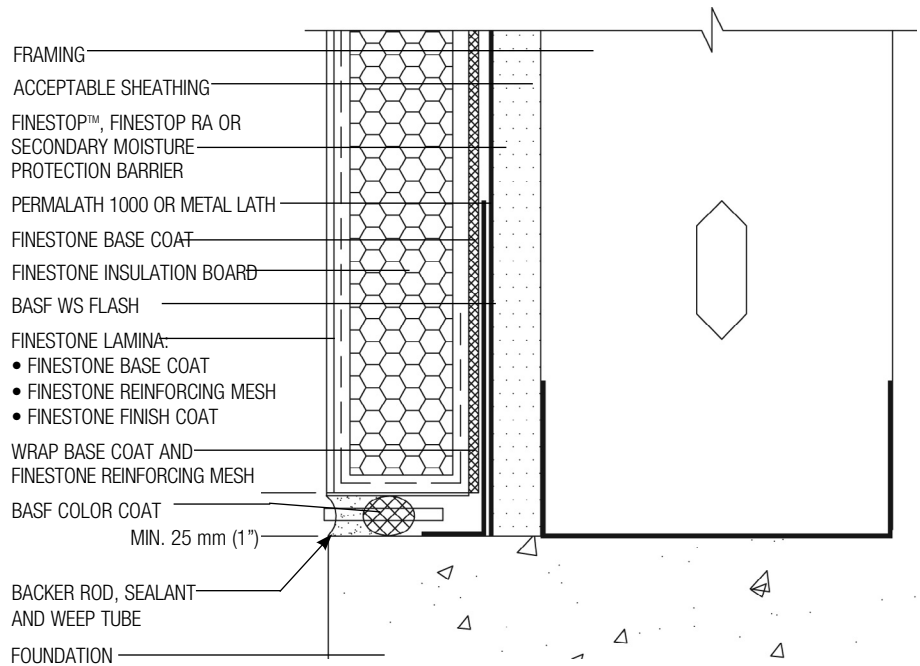
**AM-20 TYPICAL CORNER MESH APPLICATION WITH STANDARD MESH, INTERMEDIATE 6 OR 12 (PLAN VIEW)**



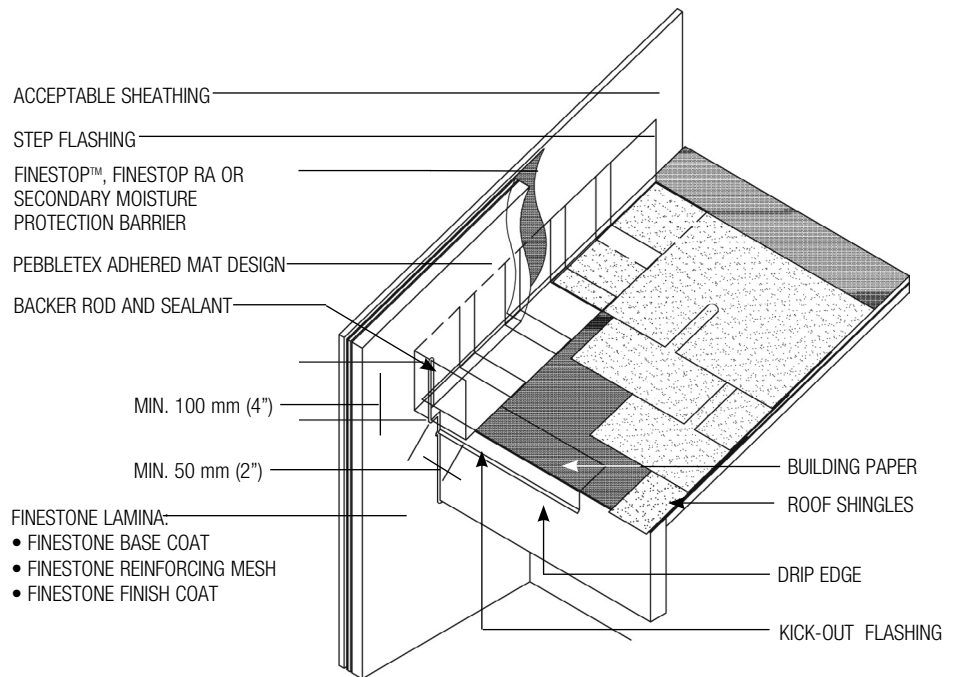
**AM-21 TYPICAL LIGHT FIXTURE**



**AM-22 TYPICAL TERMINATION AT FOUNDATION**



**AM-23 TYPICAL TERMINATION AT FOUNDATION (FLUSH)**



**NOTE:**

- KICK-OUT FLASHING MUST BE ANGLED 100° MIN. TO ALLOW FOR PROPER DRAINAGE.
- KICK-OUT FLASHING SEAMS MUST BE SOLDERED OR SEALED WITH APPROPRIATE SEALANT.
- TERMINATE PEBBLETEX ADHERED MAT DESIGN MIN. 50 mm (2") ABOVE ROOF.

**AM-24 TYPICAL KICK-OUT FLASHING DETAIL**



Pebbletex® Adhered Mat Design

For the most current version of this literature, please visit our website at [www.finestone.basf.com](http://www.finestone.basf.com).