



# Finescreen 1000 CI

Cement Board System  
with Continuous Insulation

A brand of  
**MASTER®**  
**» BUILDERS**  
SOLUTIONS

# Finescreen 1000 CI

## Design Details

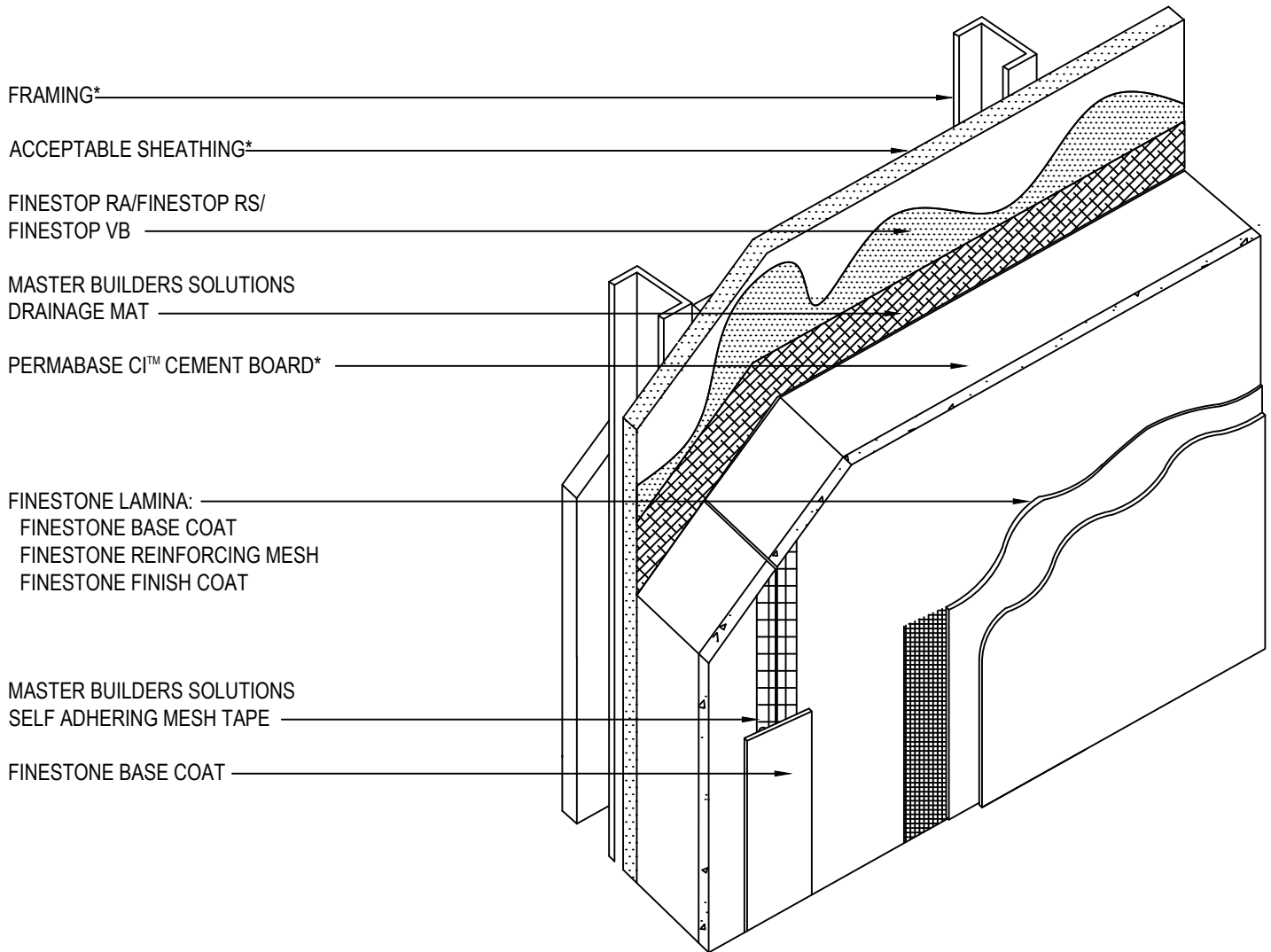
### Cement Board System with Continuous Insulation

#### Table Of Contents

1	Typical Finescreen 1000 CI System (Isometric)	8	Typical Vertical Expansion Joint with Casing Bead (Plan View)
2	Typical Finescreen 1000 CI System (Plan View)	8a	Typical Vertical Expansion Joint with Backwrap (Plan View)
3	Typical Window Jamb Detail with Casing Bead (Plan View)	9	Typical Control Joint - Reveal 1
3a	Typical Window Jamb Detail with Backwrap (Plan View)	10	Typical Control Joint - Reveal 2
4	Typical Window Head Detail with Starter Track	11	Typical Light Fixture
4a	Typical Window Head Detail with Backwrap	12	Typical Pipe Penetration
5	Typical Window Sill Detail with Casing Bead	13	Typical Sign Attachment
5a	Typical Window Sill Detail with Backwrap	14	Typical Eps Shape Application
6	Typical Expansion Joint at Floorline with Casing Bead	15	Typical Outside Corner Miter Detail (Plan View)
6a	Typical Expansion Joint at Floorline with Backwrap	15a	Typical Outside Corner Detail Rabbet Joint (Plan View)
7	Typical Drainage At Floor Line with Starter Track and Casing Bead	16	Typical Inside Corner Detail
7a	Typical Drainage at Floor Line with Backwrap	17	Typical Fascia/Soffit
		18	Typical Termination at Foundation
		19	Typical Metal Coping Detail
		20	Typical Termination Above Flat Roof

#### Notes:

- Unsatisfactory conditions shall be reported to the General Contractor and corrected before the application of Master Builders Solutions products.
- Install Master Builders Solutions materials in accordance with current installation instructions.
- The details within represent Master Builders Solutions Construction Systems US, LLC (herein after Master Builders Solutions) latest recommendations. They are presented in good faith by Master Builders Solutions. The details are subject to change without notice. Master Builders Solutions accepts no liability for the end use of the details. For conditions not shown, consult Master Builders Solutions for review of specific detail.



- FRAMING\*
- ACCEPTABLE SHEATHING\*
- FINESTOP RA/FINESTOP RS/  
FINESTOP VB
- MASTER BUILDERS SOLUTIONS  
DRAINAGE MAT
- PERMABASE CI™ CEMENT BOARD\*
- FINESTONE LAMINA:  
FINESTONE BASE COAT  
FINESTONE REINFORCING MESH  
FINESTONE FINISH COAT
- MASTER BUILDERS SOLUTIONS  
SELF ADHERING MESH TAPE
- FINESTONE BASE COAT

\*BY OTHERS

## TYPICAL FINESCREEN 1000 CI SYSTEM (ISOMETRIC)

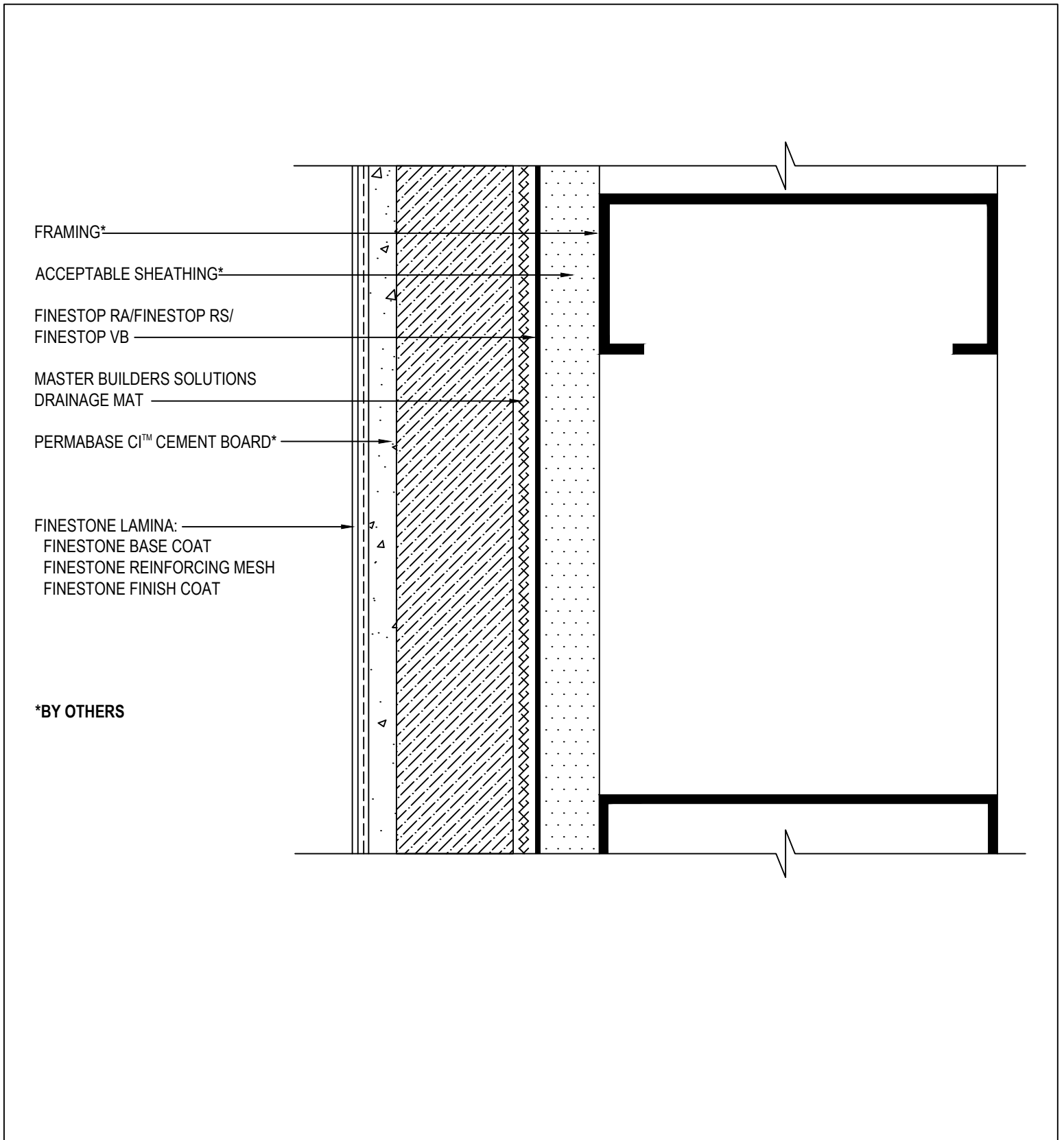
### FINESTONE FINESCREEN 1000 CI SYSTEM

SCALE: NTS

# 01

Finestone is a brand of Master Builders Solutions. Structure, substrates, flashing, sealant and other items which are not part of the Finestone *Finescreen 1000 CI System* are the responsibility of others. This detail is subject to change without notice. Master Builders Solutions accepts no liability for the end use of this detail. For conditions not shown, consult Master Builders Solutions for review of specific detail.





## TYPICAL FINESCREEN 1000 CI SYSTEM (PLAN VIEW)

### FINESTONE FINESCREEN 1000 CI SYSTEM

SCALE: NTS

02

Finestone is a brand of Master Builders Solutions. Structure, substrates, flashing, sealant and other items which are not part of the Finestone *Finescreen 1000 Ci System* are the responsibility of others. This detail is subject to change without notice. Master Builders Solutions accepts no liability for the end use of this detail. For conditions not shown, consult Master Builders Solutions for review of specific detail.

 **FINESTONE®**

FRAMING\*

ACCEPTABLE SHEATHING\*

FINESTOP RA/FINESTOP RS/  
FINESTOP VB

MASTER BUILDERS SOLUTIONS  
DRAINAGE MAT

PERMABASE CI™ CEMENT BOARD\*

FINESTONE LAMINA:  
FINESTONE BASE COAT  
FINESTONE REINFORCING MESH  
FINESTONE FINISH COAT

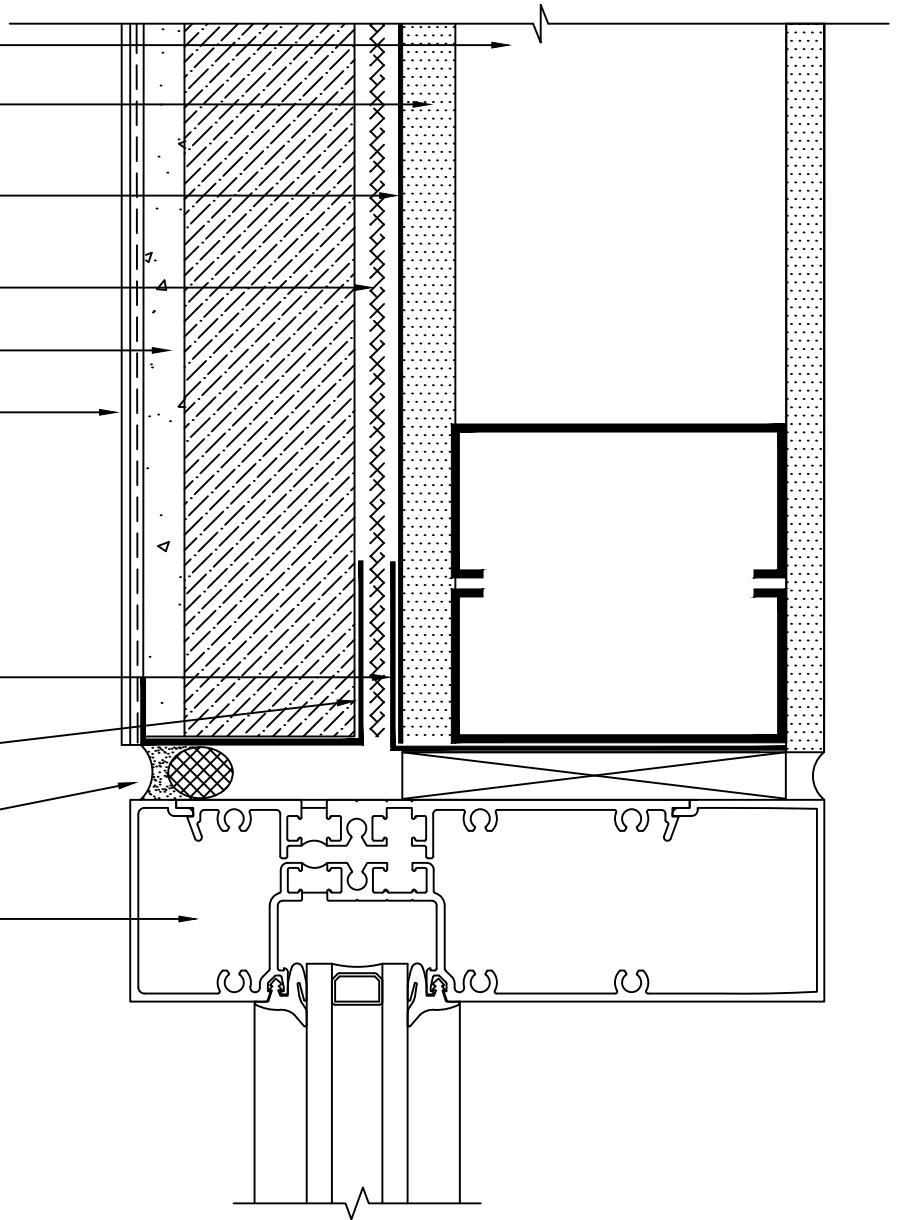
SHEATHING FABRIC EMBEDDED IN  
FINESTOP RA/ FINESTOP RS/  
FINESTOP VB OR WS FLASH W/  
FLASHING PRIMER OR MAXFLASH

CASING/STOP BEAD\*

BACKER ROD AND SEALANT\*  
(WIDTH PER DESIGN)

WINDOW\*

\*BY OTHERS



## TYPICAL WINDOW JAMB DETAIL W/ CASING BEAD (PLAN VIEW)

### FINESTONE FINESCREEN 1000 CI SYSTEM

SCALE: NTS

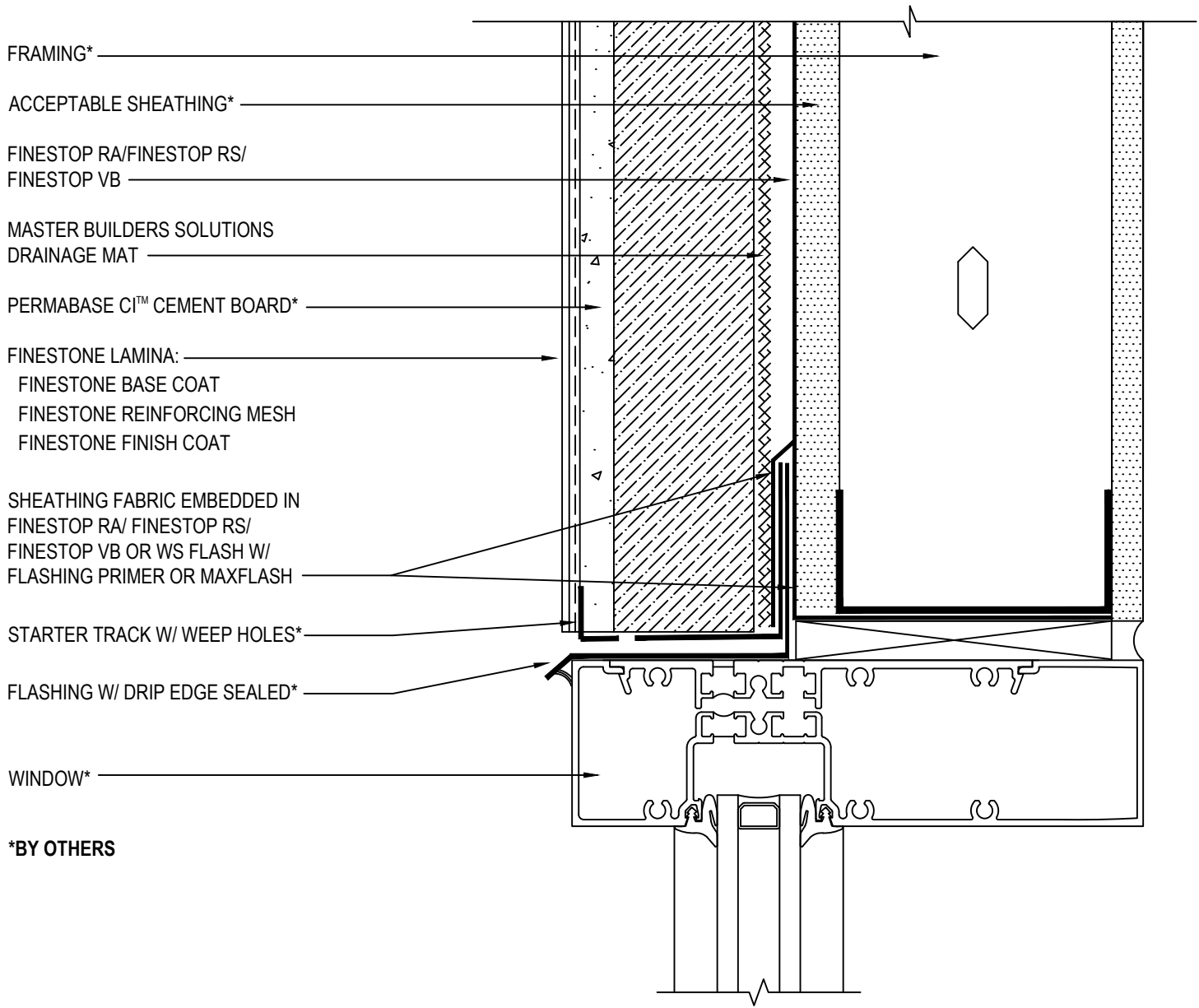
# 03

Finestone is a brand of Master Builders Solutions. Structure, substrates, flashing, sealant and other items which are not part of the Finestone *Finescreen 1000 CI System* are the responsibility of others. This detail is subject to change without notice. Master Builders Solutions accepts no liability for the end use of this detail. For conditions not shown, consult Master Builders Solutions for review of specific detail.









\*BY OTHERS

## TYPICAL WINDOW HEAD DETAIL W/ STARTER TRACK FINESTONE FINESCREEN 1000 CI SYSTEM

SCALE: NTS

04

Finestone is a brand of Master Builders Solutions. Structure, substrates, flashing, sealant and other items which are not part of the Finestone *Finescreen 1000 CI System* are the responsibility of others. This detail is subject to change without notice. Master Builders Solutions accepts no liability for the end use of this detail. For conditions not shown, consult Master Builders Solutions for review of specific detail.



FRAMING\*

ACCEPTABLE SHEATHING\*

FINESTOP RA/FINESTOP RS/  
FINESTOP VB

MASTER BUILDERS SOLUTIONS  
DRAINAGE MAT

PERMABASE CI™ CEMENT BOARD\*

FINESTONE LAMINA:  
FINESTONE BASE COAT  
FINESTONE REINFORCING MESH  
FINESTONE FINISH COAT

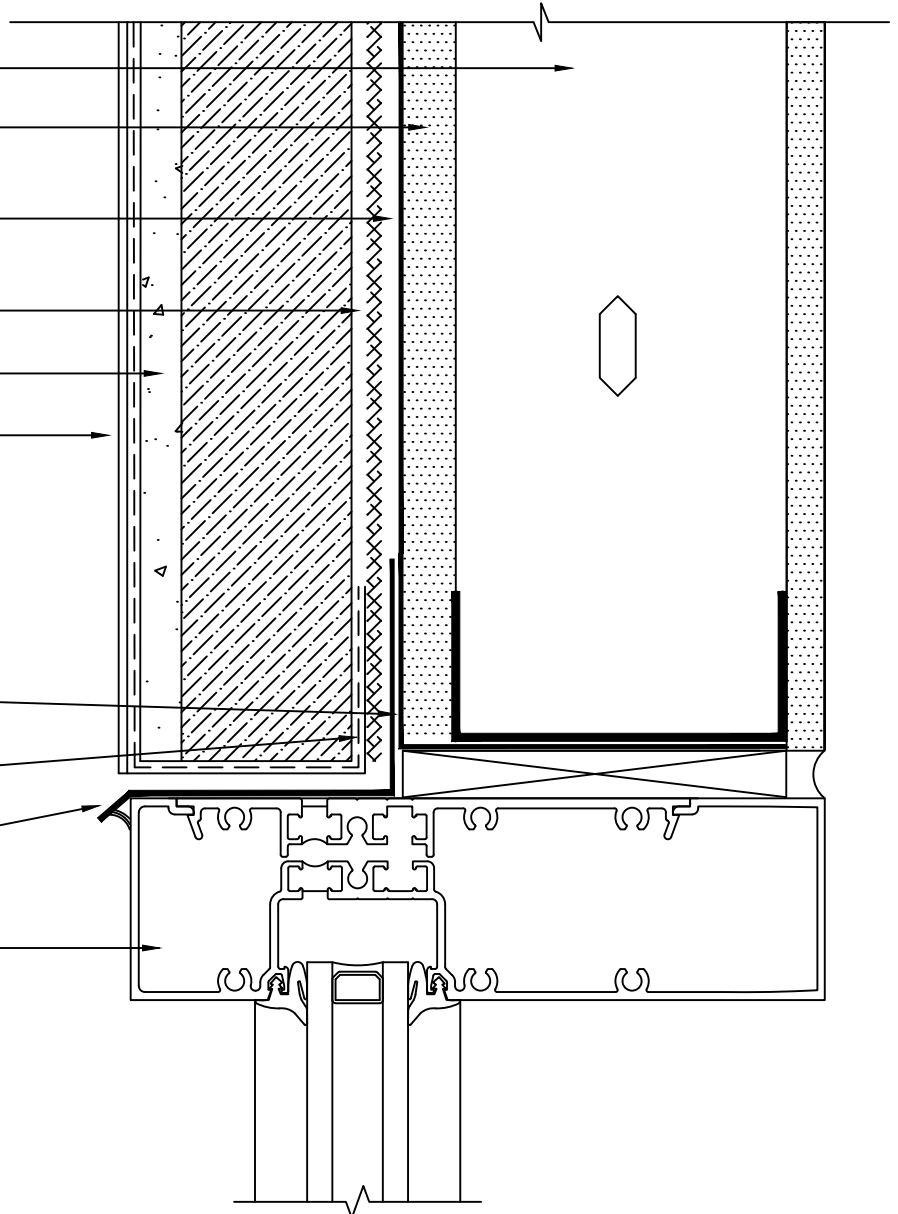
SHEATHING FABRIC EMBEDDED IN  
FINESTOP RA/ FINESTOP RS/  
FINESTOP VB OR WS FLASH W/  
FLASHING PRIMER OR MAXFLASH

BACKWRAP TERMINATION

FLASHING W/ DRIP EDGE SEALED\*

WINDOW\*

\*BY OTHERS



## TYPICAL WINDOW HEAD DETAIL W/ BACKWRAP FINESTONE FINESCREEN 1000 CI SYSTEM

SCALE: NTS

# 04a

Finestone is a brand of Master Builders Solutions. Structure, substrates, flashing, sealant and other items which are not part of the Finestone *Finescreen 1000 CI System* are the responsibility of others. This detail is subject to change without notice. Master Builders Solutions accepts no liability for the end use of this detail. For conditions not shown, consult Master Builders Solutions for review of specific detail.





WINDOW\*

BACKER ROD AND SEALANT\*  
(WIDTH PER DESIGN)

CASING/STOP BEAD\*

SHEATHING FABRIC EMBEDDED IN  
FINESTOP RA/FINESTOP RS/  
FINESTOP VB OR WS FLASH W/  
FLASHING PRMER OR MAXFLASH

FRAMING\*

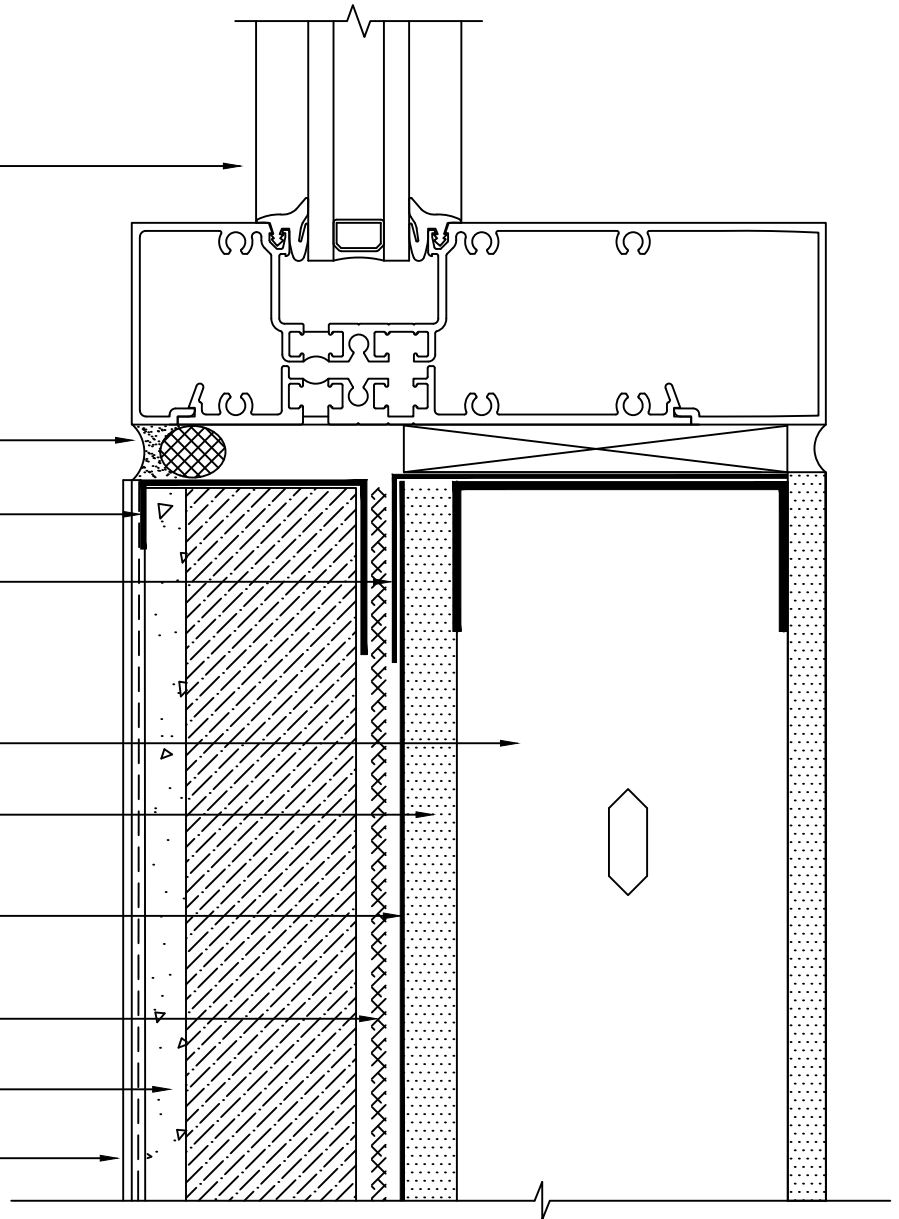
ACCEPTABLE SHEATHING\*

FINESTOP RA/FINESTOP RS/  
FINESTOP VB

MASTER BUILDERS SOLUTIONS  
DRAINAGE MAT

PERMABASE CI™ CEMENT BOARD\*

FINESTONE LAMINA:  
FINESTONE BASE COAT  
FINESTONE REINFORCING MESH  
FINESTONE FINISH COAT



\*BY OTHERS

## TYPICAL WINDOW SILL DETAIL W/ CASING BEAD FINESTONE FINESCREEN 1000 CI SYSTEM

SCALE: NTS

**05**

Finestone is a brand of Master Builders Solutions. Structure, substrates, flashing, sealant and other items which are not part of the Finestone *Finescreen 1000 CI System* are the responsibility of others. This detail is subject to change without notice. Master Builders Solutions accepts no liability for the end use of this detail. For conditions not shown, consult Master Builders Solutions for review of specific detail.



WINDOW\*

BACKER ROD AND SEALANT\*  
(WIDTH PER DESIGN)

BACKWRAP TERMINATION

SHEATHING FABRIC EMBEDDED IN  
FINESTOP RA/FINESTOP RS/  
FINESTOP VB OR WS FLASH W/  
FLASHING PRMER OR MAXFLASH

FRAMING\*

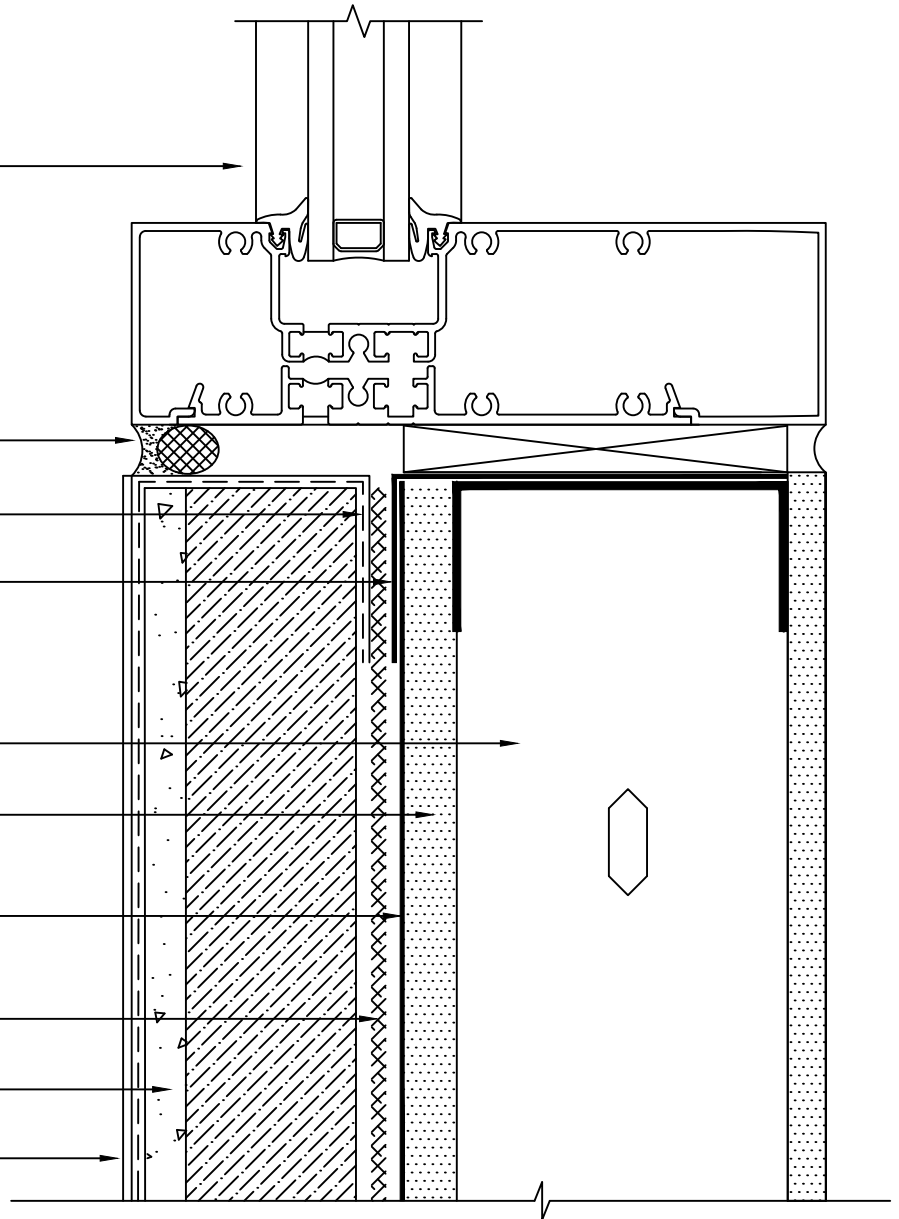
ACCEPTABLE SHEATHING\*

FINESTOP RA/FINESTOP RS/  
FINESTOP VB

MASTER BUILDERS SOLUTIONS  
DRAINAGE MAT

PERMABASE CI™ CEMENT BOARD\*

FINESTONE LAMINA:  
FINESTONE BASE COAT  
FINESTONE REINFORCING MESH  
FINESTONE FINISH COAT



\*BY OTHERS

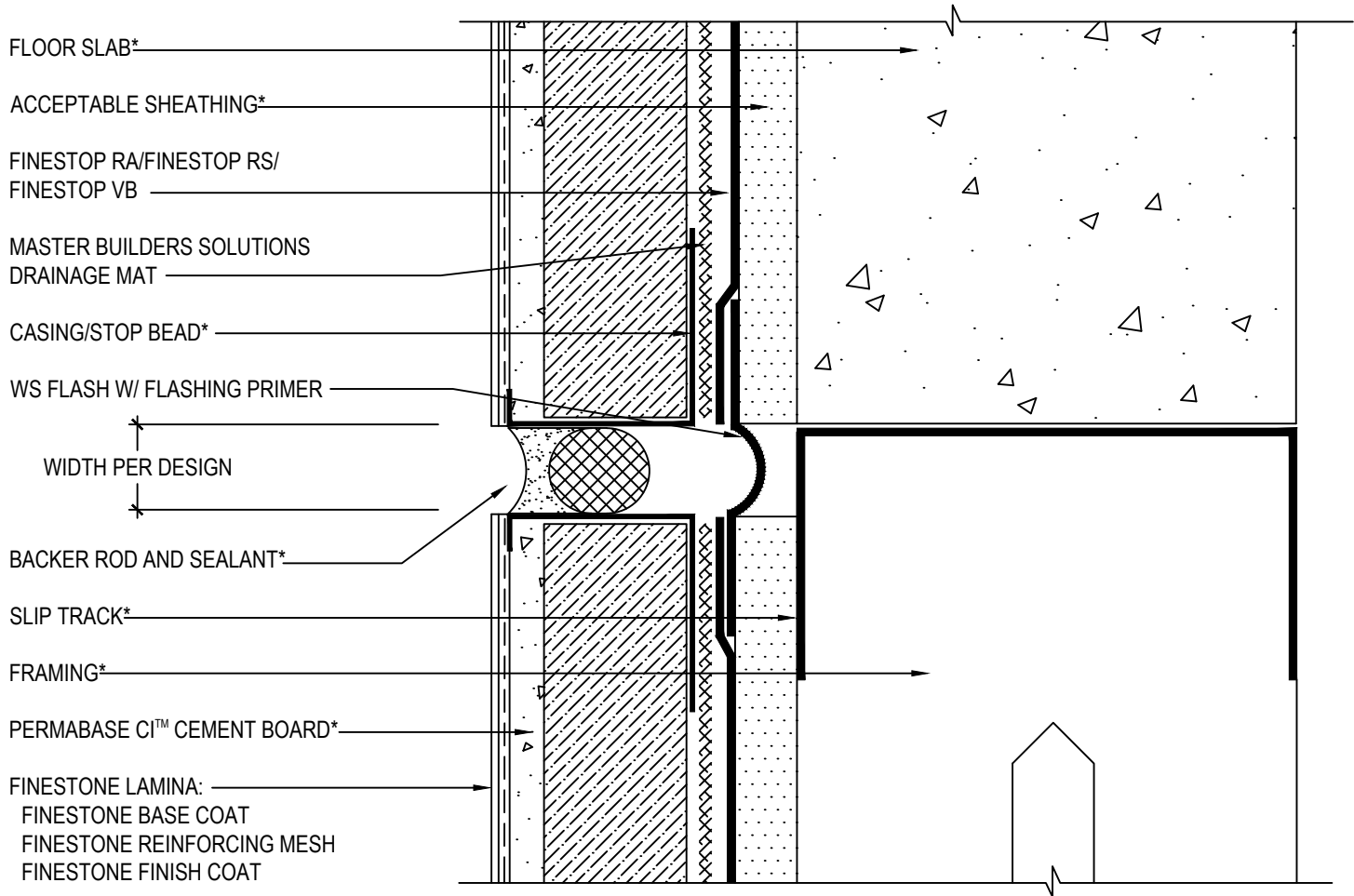
## TYPICAL WINDOW SILL DETAIL W/ BACKWRAP FINESTONE FINESCREEN 1000 CI SYSTEM

SCALE: NTS

**05a**

Finestone is a brand of Master Builders Solutions. Structure, substrates, flashing, sealant and other items which are not part of the Finestone *Finescreen 1000 CI System* are the responsibility of others. This detail is subject to change without notice. Master Builders Solutions accepts no liability for the end use of this detail. For conditions not shown, consult Master Builders Solutions for review of specific detail.

**FINESTONE®**



**\*BY OTHERS**

**NOTE: IT IS RECOMMENDED THAT A MEANS FOR DRAINAGE IS PROVIDED AT EVERY THIRD FLOOR LINE. SEE TYPICAL DRAINAGE AT FLOOR LINE DETAILS**

## TYPICAL EXPANSION JOINT AT FLOORLINE W/ CASING BEAD FINESTONE FINESCREEN 1000 CI SYSTEM

SCALE: NTS

**06**

Finestone is a brand of Master Builders Solutions. Structure, substrates, flashing, sealant and other items which are not part of the Finestone *Finescreen 1000 CI System* are the responsibility of others. This detail is subject to change without notice. Master Builders Solutions accepts no liability for the end use of this detail. For conditions not shown, consult Master Builders Solutions for review of specific detail.

**FINESTONE®**

FLOOR SLAB\*

ACCEPTABLE SHEATHING\*

FINESTOP RA/FINESTOP RS/  
FINESTOP VB

MASTER BUILDERS SOLUTIONS  
DRAINAGE MAT

BACKWRAP TERMINATION

WS FLASH W/ FLASHING PRIMER

WIDTH PER DESIGN

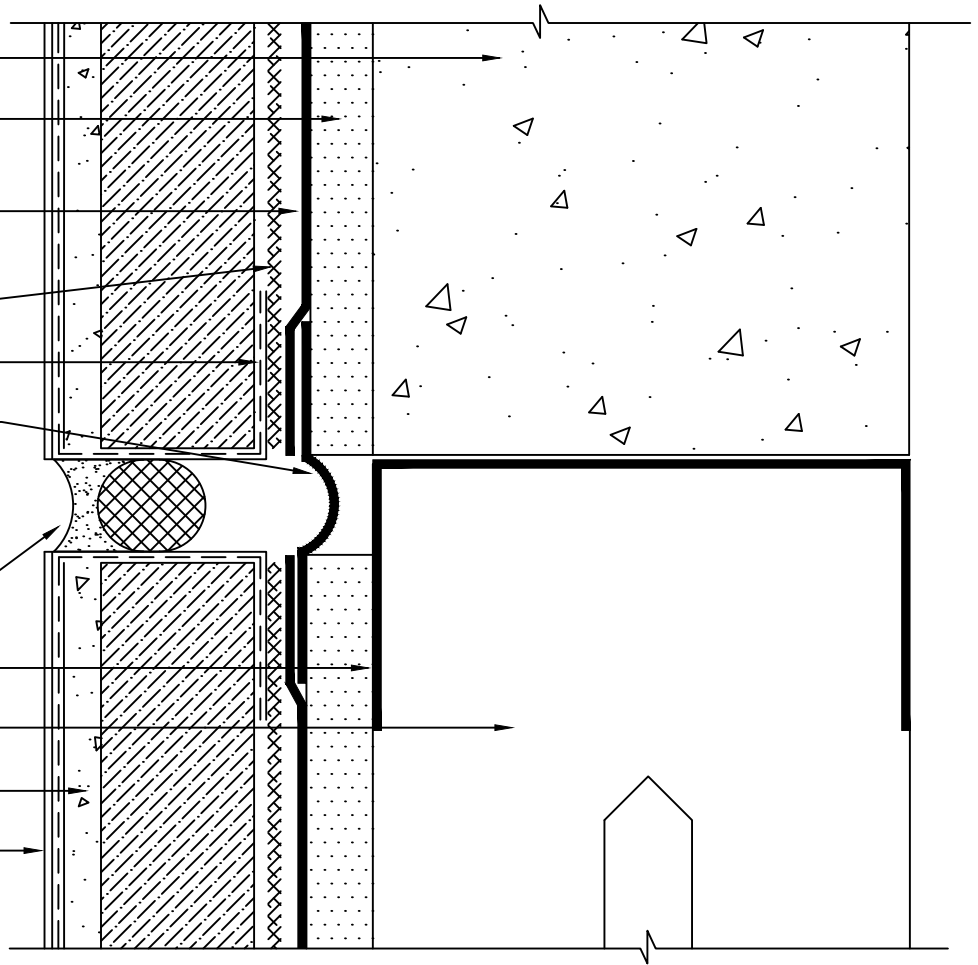
BACKER ROD AND SEALANT\*

SLIP TRACK\*

FRAMING\*

PERMABASE CI™ CEMENT BOARD\*

FINESTONE LAMINA:  
FINESTONE BASE COAT  
FINESTONE REINFORCING MESH  
FINESTONE FINISH COAT



\*BY OTHERS

NOTE: IT IS RECOMMENDED THAT A MEANS FOR DRAINAGE IS PROVIDED AT EVERY THIRD FLOOR LINE. SEE TYPICAL DRAINAGE AT FLOOR LINE DETAILS

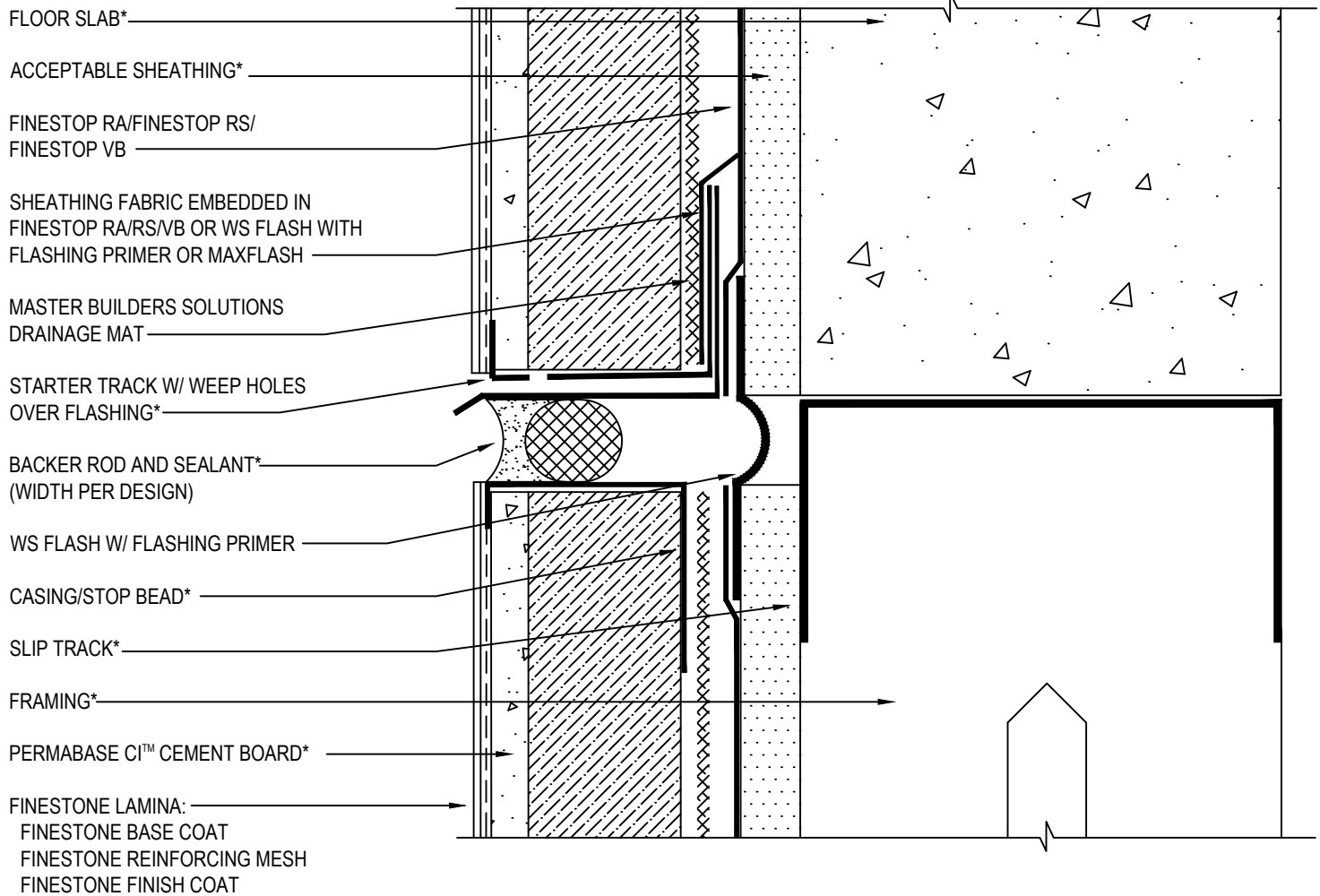
## TYPICAL EXPANSION JOINT AT FLOORLINE W/ BACKWRAP FINESTONE FINESCREEN 1000 CI SYSTEM

SCALE: NTS

06a

Finestone is a brand of Master Builders Solutions. Structure, substrates, flashing, sealant and other items which are not part of the Finestone *Finescreen 1000 CI System* are the responsibility of others. This detail is subject to change without notice. Master Builders Solutions accepts no liability for the end use of this detail. For conditions not shown, consult Master Builders Solutions for review of specific detail.

 **FINESTONE®**



\*BY OTHERS

NOTE: IT IS RECOMMENDED THAT A  
MEANS FOR DRAINAGE IS PROVIDED AT  
EVERY THIRD FLOOR LINE

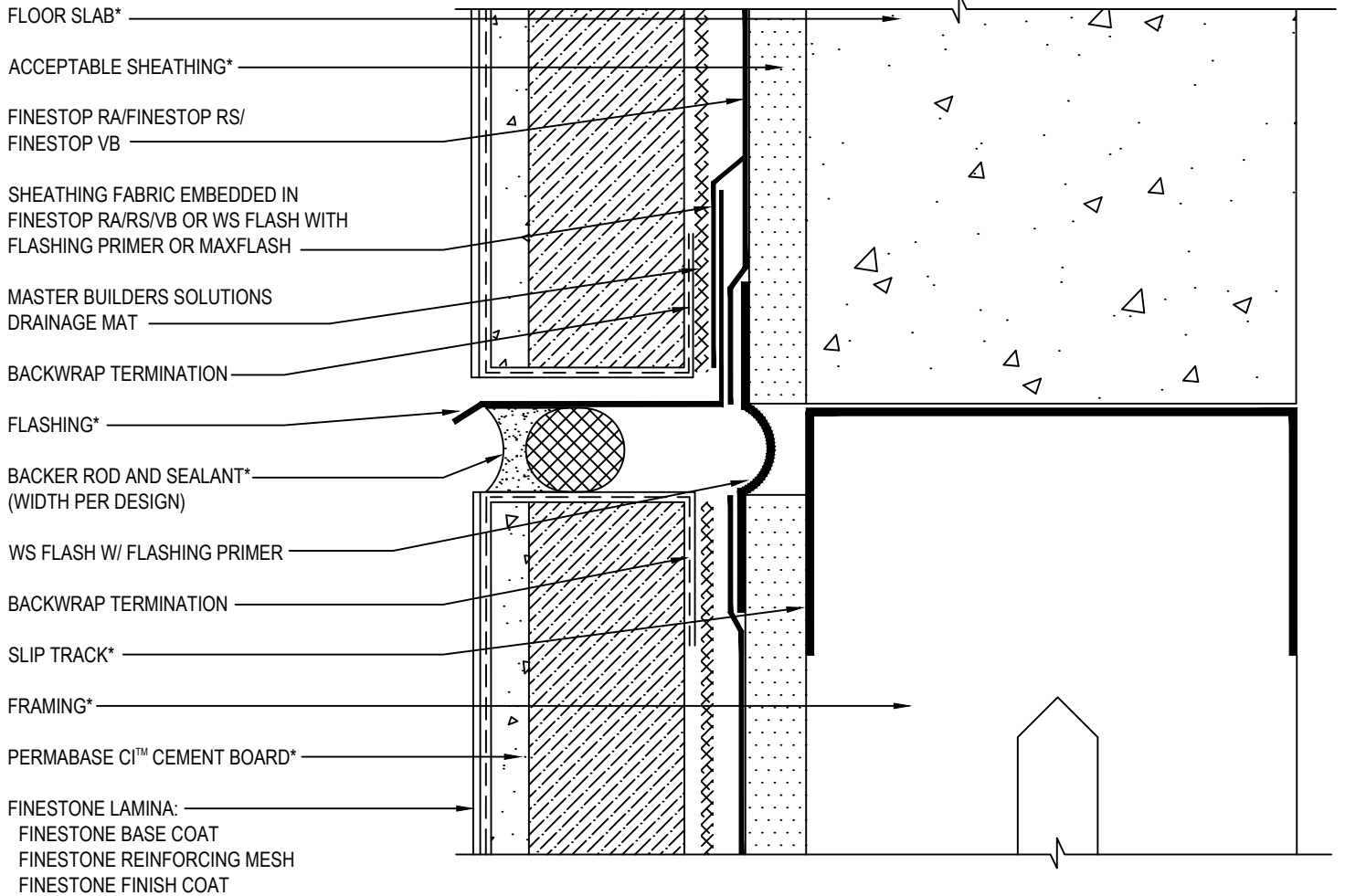
## TYPICAL DRAINAGE AT FLOOR LINE W/ STARTER TRACK & CASING BEAD FINESTONE FINESCREEN 1000 CI SYSTEM

SCALE: NTS

07

Finestone is a brand of Master Builders Solutions. Structure, substrates, flashing, sealant and other items which are not part of the Finestone *Finescreen 1000 CI System* are the responsibility of others. This detail is subject to change without notice. Master Builders Solutions accepts no liability for the end use of this detail. For conditions not shown, consult Master Builders Solutions for review of specific detail.

 **FINESTONE®**



\*BY OTHERS

**NOTE: IT IS RECOMMENDED THAT A  
MEANS FOR DRAINAGE IS PROVIDED AT  
EVERY THIRD FLOOR LINE**

## TYPICAL DRAINAGE AT FLOOR LINE W/ BACKWRAP FINESTONE FINESCREEN 1000 CI SYSTEM

SCALE: NTS

**07a**

Finestone is a brand of Master Builders Solutions. Structure, substrates, flashing, sealant and other items which are not part of the Finestone *Finescreen 1000 CI System* are the responsibility of others. This detail is subject to change without notice. Master Builders Solutions accepts no liability for the end use of this detail. For conditions not shown, consult Master Builders Solutions for review of specific detail.

**FINESTONE®**

ACCEPTABLE SHEATHING\*

FINESTOP RA/FINESTOP RS/  
FINESTOP VB

MASTER BUILDERS SOLUTIONS  
DRAINAGE MAT

CASING/STOP BEAD\*

WS FLASH W/ FLASHING PRIMER

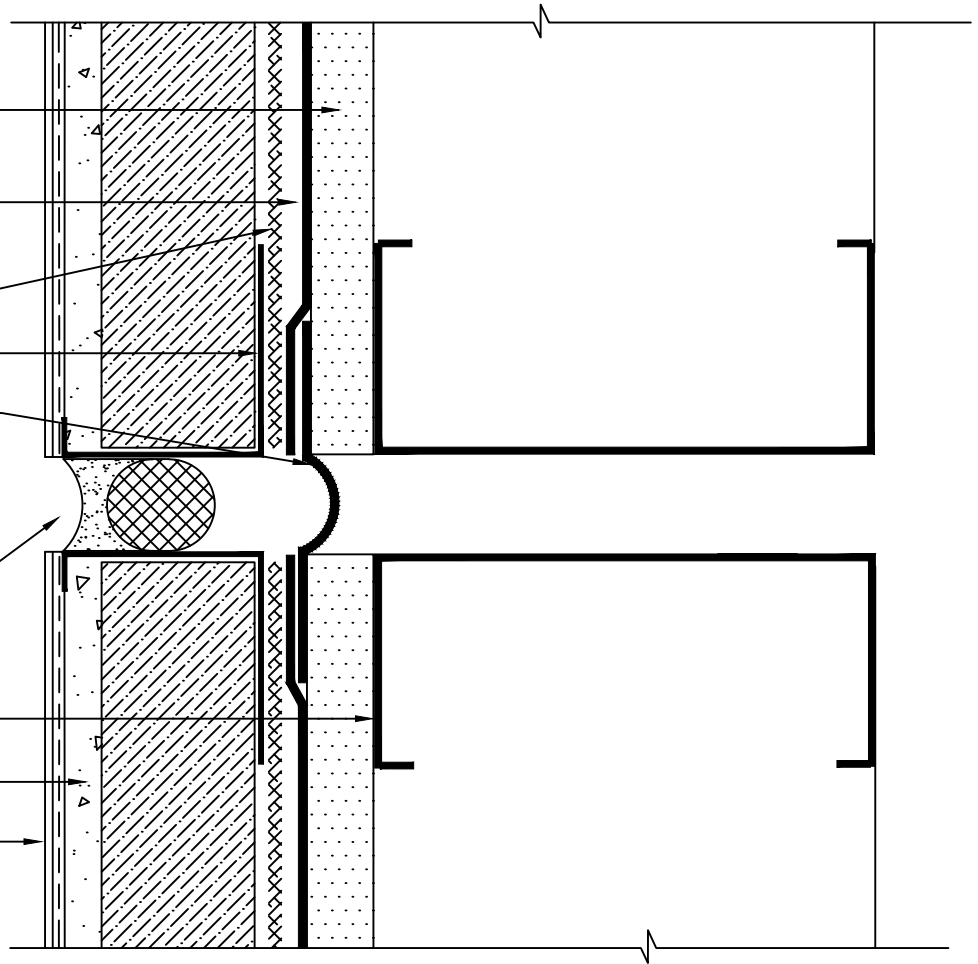
WIDTH PER DESIGN

BACKER ROD AND SEALANT\*

FRAMING\*

PERMABASE CI™ CEMENT BOARD\*

FINESTONE LAMINA:  
FINESTONE BASE COAT  
FINESTONE REINFORCING MESH  
FINESTONE FINISH COAT



\*BY OTHERS

## TYPICAL VERTICAL EXPANSION JOINT W/ CASING BEAD (PLAN VIEW)

### FINESTONE FINESCREEN 1000 CI SYSTEM

SCALE: NTS

08

Finestone is a brand of Master Builders Solutions. Structure, substrates, flashing, sealant and other items which are not part of the Finestone *Finescreen 1000 CI System* are the responsibility of others. This detail is subject to change without notice. Master Builders Solutions accepts no liability for the end use of this detail. For conditions not shown, consult Master Builders Solutions for review of specific detail.

 **FINESTONE®**



ACCEPTABLE SHEATHING\*

FINESTOP RA/FINESTOP RS/  
FINESTOP VB

MASTER BUILDERS SOLUTIONS  
DRAINAGE MAT

BACKWRAP TERMINATION

WS FLASH W/ FLASHING PRIMER

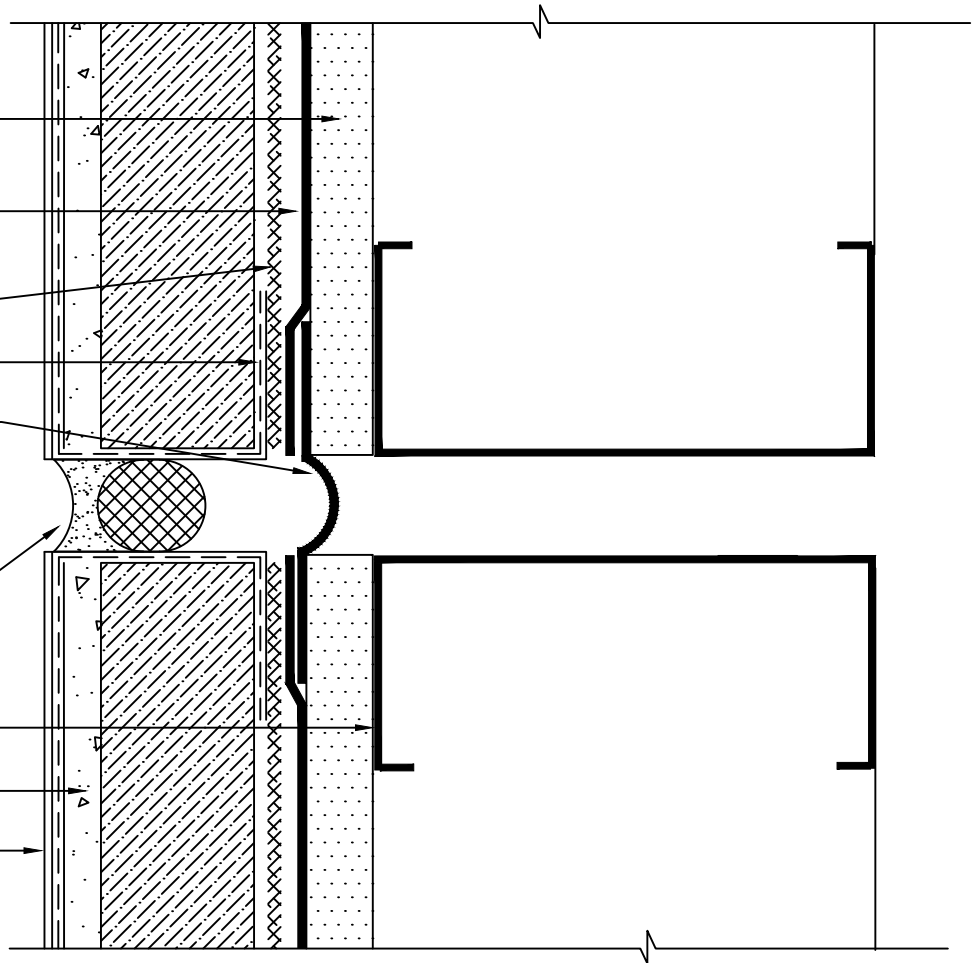
WIDTH PER DESIGN

BACKER ROD AND SEALANT\*

FRAMING\*

PERMABASE CI™ CEMENT BOARD\*

FINESTONE LAMINA:  
FINESTONE BASE COAT  
FINESTONE REINFORCING MESH  
FINESTONE FINISH COAT



\*BY OTHERS

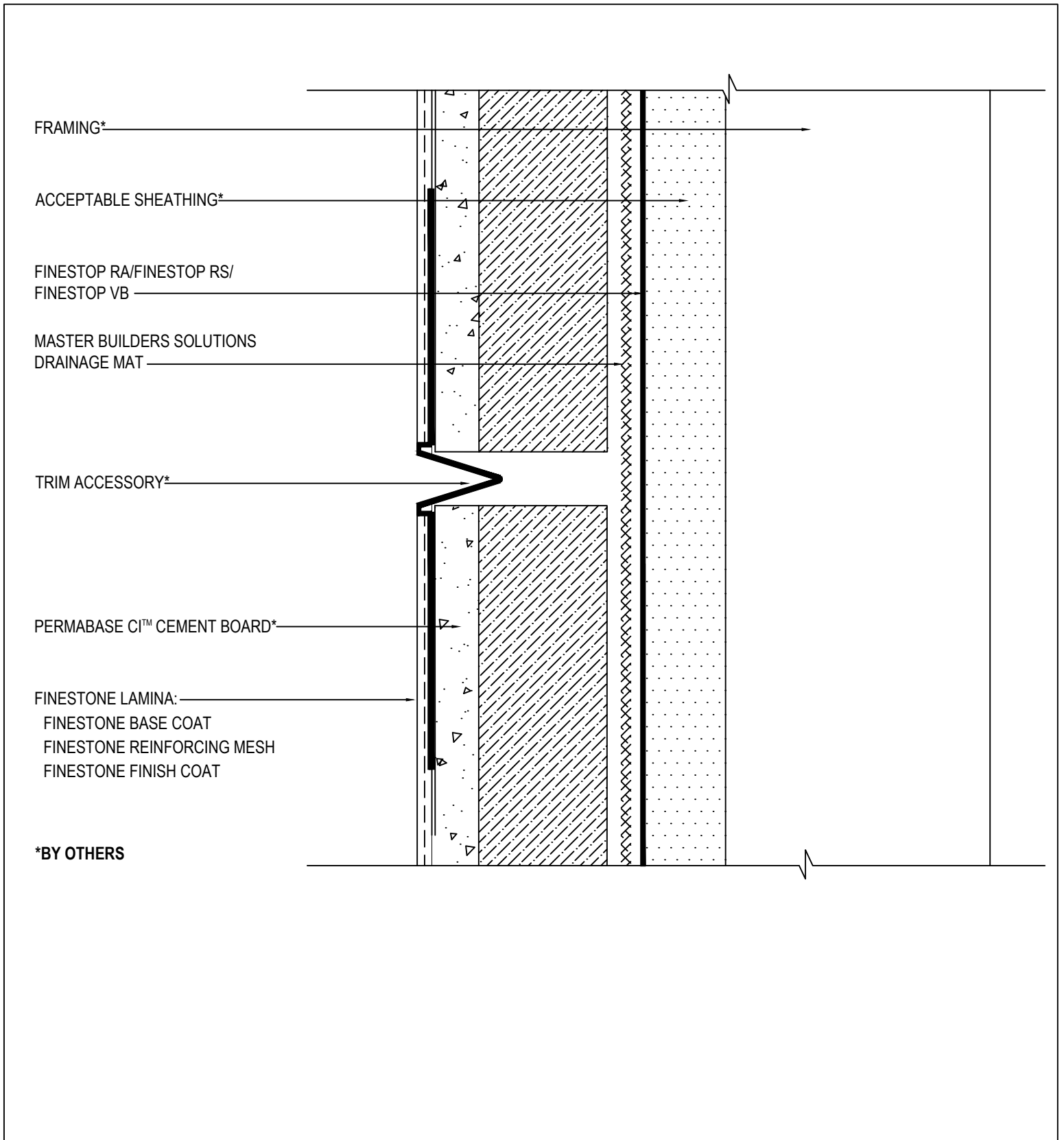
## TYPICAL VERTICAL EXPANSION JOINT W/ BACKWRAP (PLAN VIEW) FINESTONE FINESCREEN 1000 CI SYSTEM

SCALE: NTS

08a

Finestone is a brand of Master Builders Solutions. Structure, substrates, flashing, sealant and other items which are not part of the Finestone *Finescreen 1000 CI System* are the responsibility of others. This detail is subject to change without notice. Master Builders Solutions accepts no liability for the end use of this detail. For conditions not shown, consult Master Builders Solutions for review of specific detail.

 **FINESTONE®**



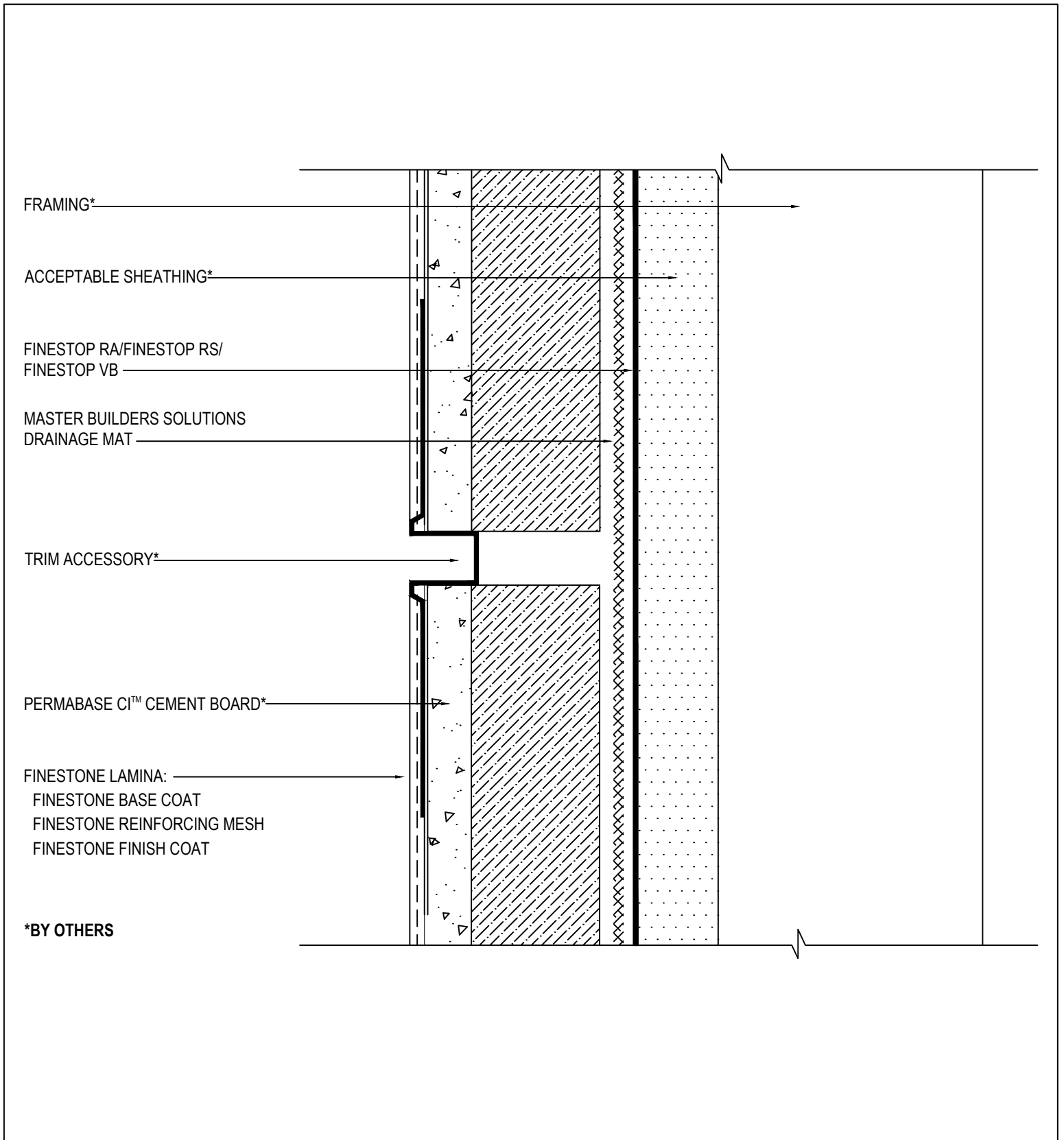
**TYPICAL CONTROL JOINT - REVEAL 1**  
**FINESTONE FINESCREEN 1000 CI SYSTEM**

SCALE: NTS

**09**

Finestone is a brand of Master Builders Solutions. Structure, substrates, flashing, sealant and other items which are not part of the Finestone *Finescreen 1000 CI System* are the responsibility of others. This detail is subject to change without notice. Master Builders Solutions accepts no liability for the end use of this detail. For conditions not shown, consult Master Builders Solutions for review of specific detail.





## TYPICAL CONTROL JOINT - REVEAL 2

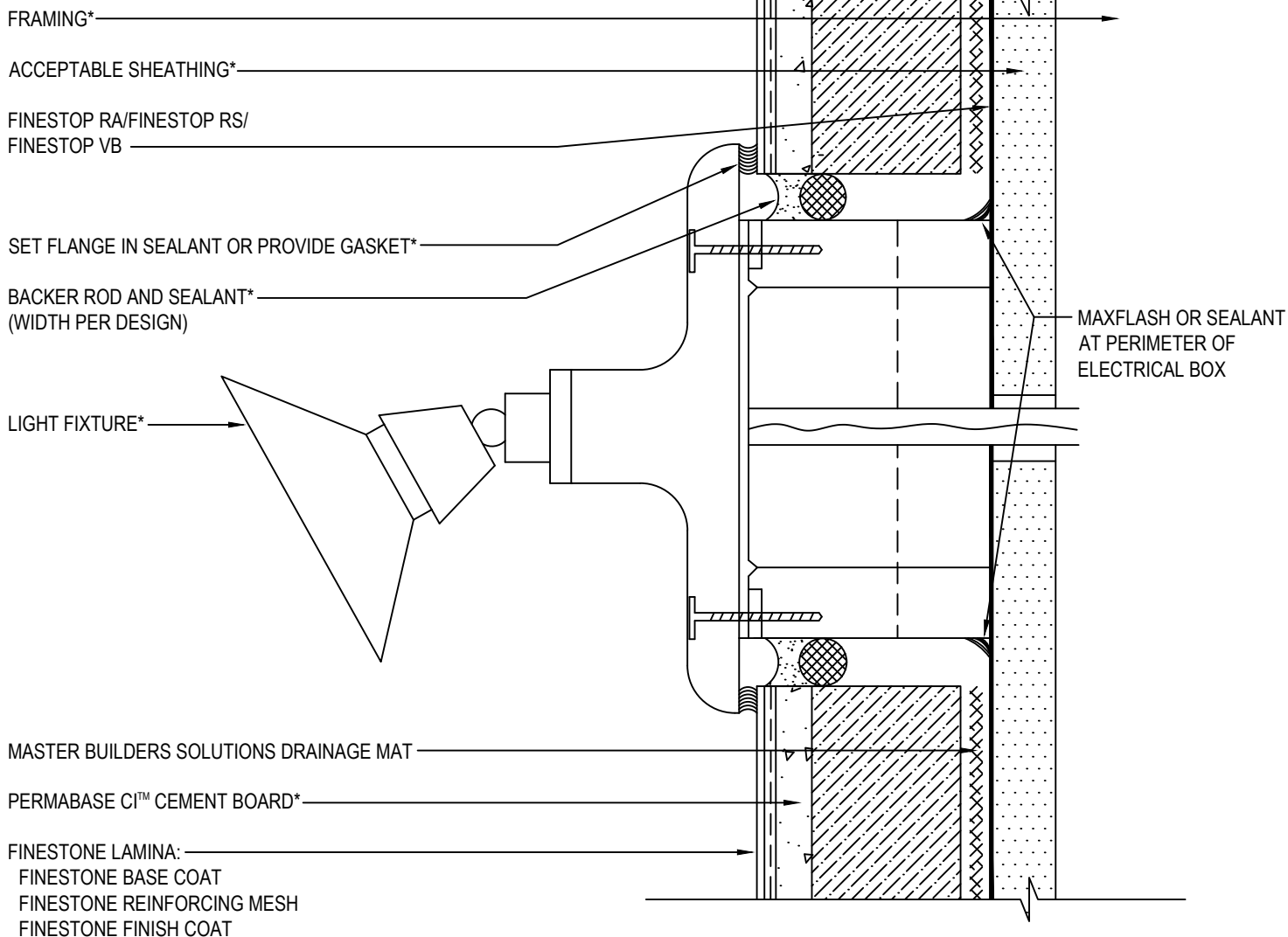
### FINESTONE FINESCREEN 1000 CI SYSTEM

SCALE: NTS

10

Finestone is a brand of Master Builders Solutions. Structure, substrates, flashing, sealant and other items which are not part of the Finestone *Finescreen 1000 CI System* are the responsibility of others. This detail is subject to change without notice. Master Builders Solutions accepts no liability for the end use of this detail. For conditions not shown, consult Master Builders Solutions for review of specific detail.

**FINESTONE®**



\*BY OTHERS

## TYPICAL LIGHT FIXTURE FINESTONE FINESCREEN 1000 CI SYSTEM

SCALE: NTS

11

Finestone is a brand of Master Builders Solutions. Structure, substrates, flashing, sealant and other items which are not part of the Finestone *Finescreen 1000 CI System* are the responsibility of others. This detail is subject to change without notice. Master Builders Solutions accepts no liability for the end use of this detail. For conditions not shown, consult Master Builders Solutions for review of specific detail.



FRAMING\*

ACCEPTABLE SHEATHING\*

FINESTOP RA/FINESTOP RS/  
FINESTOP VB

MASTER BUILDERS SOLUTIONS  
DRAINAGE MAT

BACKER ROD AND SEALANT\*  
(WIDTH PER DESIGN)

PIPE\*

MAXFLASH OR SEALANT AT  
PERIMETER OF PENETRATION

PERMABASE CI™ CEMENT BOARD\*

FINESTONE LAMINA:  
FINESTONE BASE COAT  
FINESTONE REINFORCING MESH  
FINESTONE FINISH COAT

\*BY OTHERS

## TYPICAL PIPE PENETRATION FINESTONE FINESCREEN 1000 CI SYSTEM

SCALE: NTS

12

Finestone is a brand of Master Builders Solutions. Structure, substrates, flashing, sealant and other items which are not part of the Finestone *Finescreen 1000 CI System* are the responsibility of others. This detail is subject to change without notice. Master Builders Solutions accepts no liability for the end use of this detail. For conditions not shown, consult Master Builders Solutions for review of specific detail.

 **FINESTONE®**

FRAMING\*

ACCEPTABLE SHEATHING\*

FINESTOP RA/FINESTOP RS/  
FINESTOP VB

MASTER BUILDERS SOLUTIONS  
DRAINAGE MAT

SIGN\*

SLEEVE SET IN SEALANT\*

SEALANT AT PERIMETER OF  
PENETRATION\*

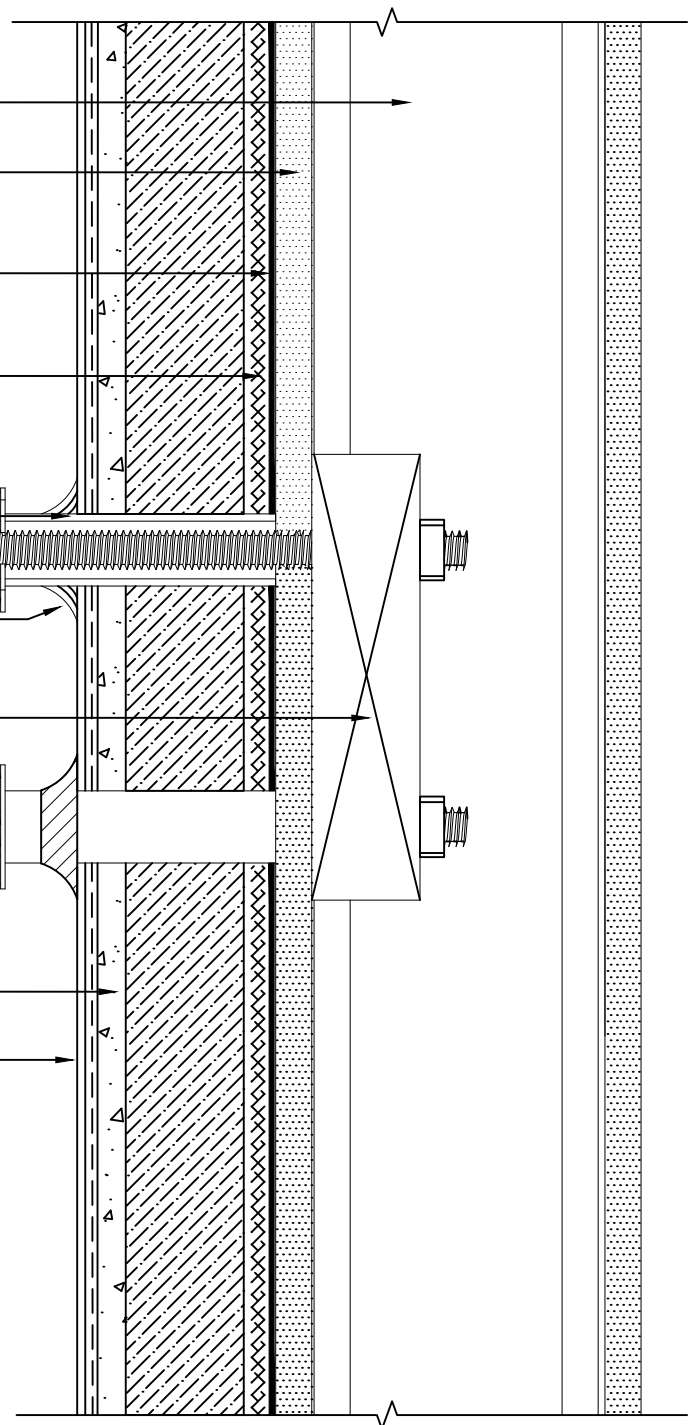
BLOCKING OR SUPPORT FOR SIGN  
ATTACHMENT\*

MECHANICAL FASTENER SET IN  
SEALANT\*

PERMABASE CI™ CEMENT BOARD\*

FINESTONE LAMINA:  
FINESTONE BASE COAT  
FINESTONE REINFORCING MESH  
FINESTONE FINISH COAT

\*BY OTHERS



## TYPICAL SIGN ATTACHMENT

### FINESTONE FINESCREEN 1000 CI SYSTEM

SCALE: NTS

# 13

Finestone is a brand of Master Builders Solutions. Structure, substrates, flashing, sealant and other items which are not part of the Finestone *Finescreen 1000 CI System* are the responsibility of others. This detail is subject to change without notice. Master Builders Solutions accepts no liability for the end use of this detail. For conditions not shown, consult Master Builders Solutions for review of specific detail.



FRAMING\*

ACCEPTABLE SHEATHING\*

FINESTOP RA/FINESTOP RS/  
FINESTOP VB

MIN. 6:12 SLOPE

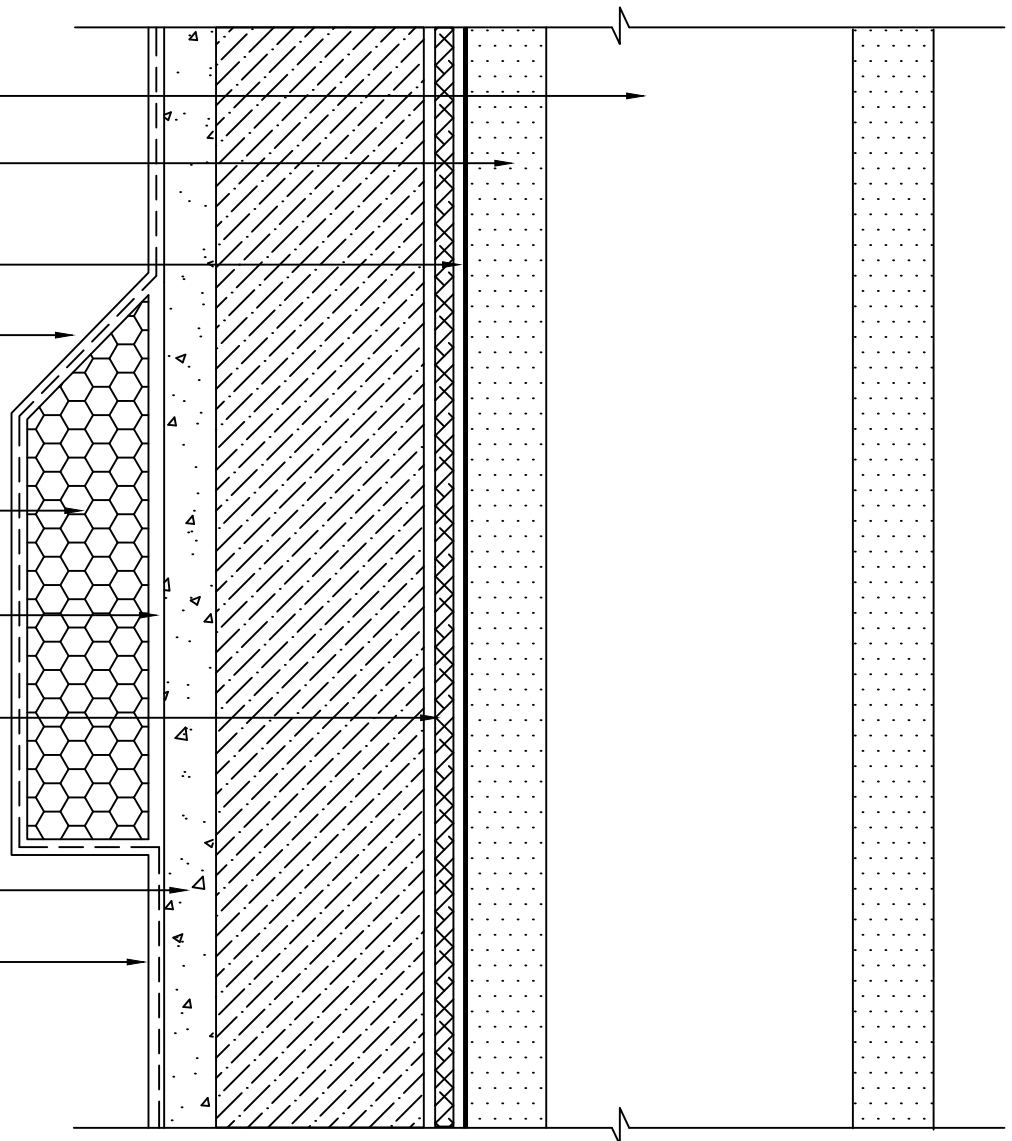
EPS AESTHETIC BAND

FINESTONE BASE COAT/ADHESIVE TO  
ADHERE EPS BAND

MASTER BUILDERS SOLUTIONS  
DRAINAGE MAT

PERMABASE CI™ CEMENT BOARD\*

FINESTONE LAMINA:  
FINESTONE BASE COAT  
FINESTONE REINFORCING MESH  
FINESTONE FINISH COAT



\*BY OTHERS

## TYPICAL EPS SHAPE APPLICATION FINESTONE FINESCREEN 1000 CI SYSTEM

SCALE: NTS

14

Finestone is a brand of Master Builders Solutions. Structure, substrates, flashing, sealant and other items which are not part of the Finestone *Finescreen 1000 CI System* are the responsibility of others. This detail is subject to change without notice. Master Builders Solutions accepts no liability for the end use of this detail. For conditions not shown, consult Master Builders Solutions for review of specific detail.

 **FINESTONE®**



PERMABASE CI™ CEMENT BOARD\*  
(MITER CUT)

2 LAYERS STANDARD MESH  
(WRAP FROM BOTH SIDES  
OF CORNER MINIMUM 8")

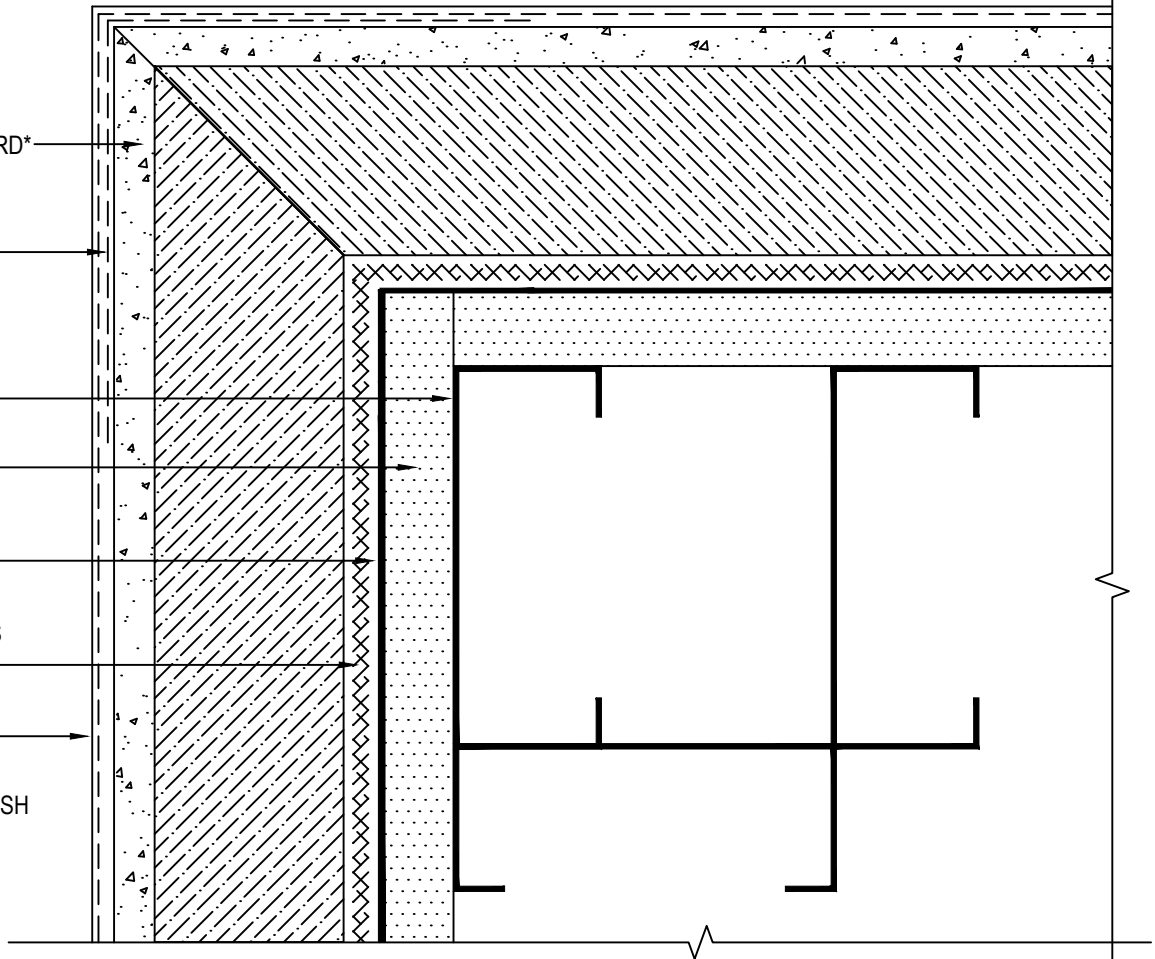
FRAMING\*

ACCEPTABLE SHEATHING\*

FINESTOP RA/FINESTOP RS/  
FINESTOP VB

MASTER BUILDERS SOLUTIONS  
DRAINAGE MAT

FINESTONE LAMINA:  
FINESTONE BASE COAT  
FINESTONE REINFORCING MESH  
FINESTONE FINISH COAT



\*BY OTHERS

## TYPICAL OUTSIDE CORNER MITER DETAIL (PLAN VIEW)

### FINESTONE FINESCREEN 1000 CI SYSTEM

SCALE: NTS

15

Finestone is a brand of Master Builders Solutions. Structure, substrates, flashing, sealant and other items which are not part of the Finestone *Finescreen 1000 CI System* are the responsibility of others. This detail is subject to change without notice. Master Builders Solutions accepts no liability for the end use of this detail. For conditions not shown, consult Master Builders Solutions for review of specific detail.

 **FINESTONE®**

REMOVE SECTION OF INSULATION  
FROM ONE SIDE OF THE PERMABASE  
CI™ TO ALLOW PIECES OF PERMABASE  
CI™ TO NEST AT CORNER  
(RABBET JOINT)

PERMABASE CI™ CEMENT BOARD\*

2 LAYERS STANDARD MESH  
(WRAP FROM BOTH SIDES  
OF CORNER MINIMUM 8")

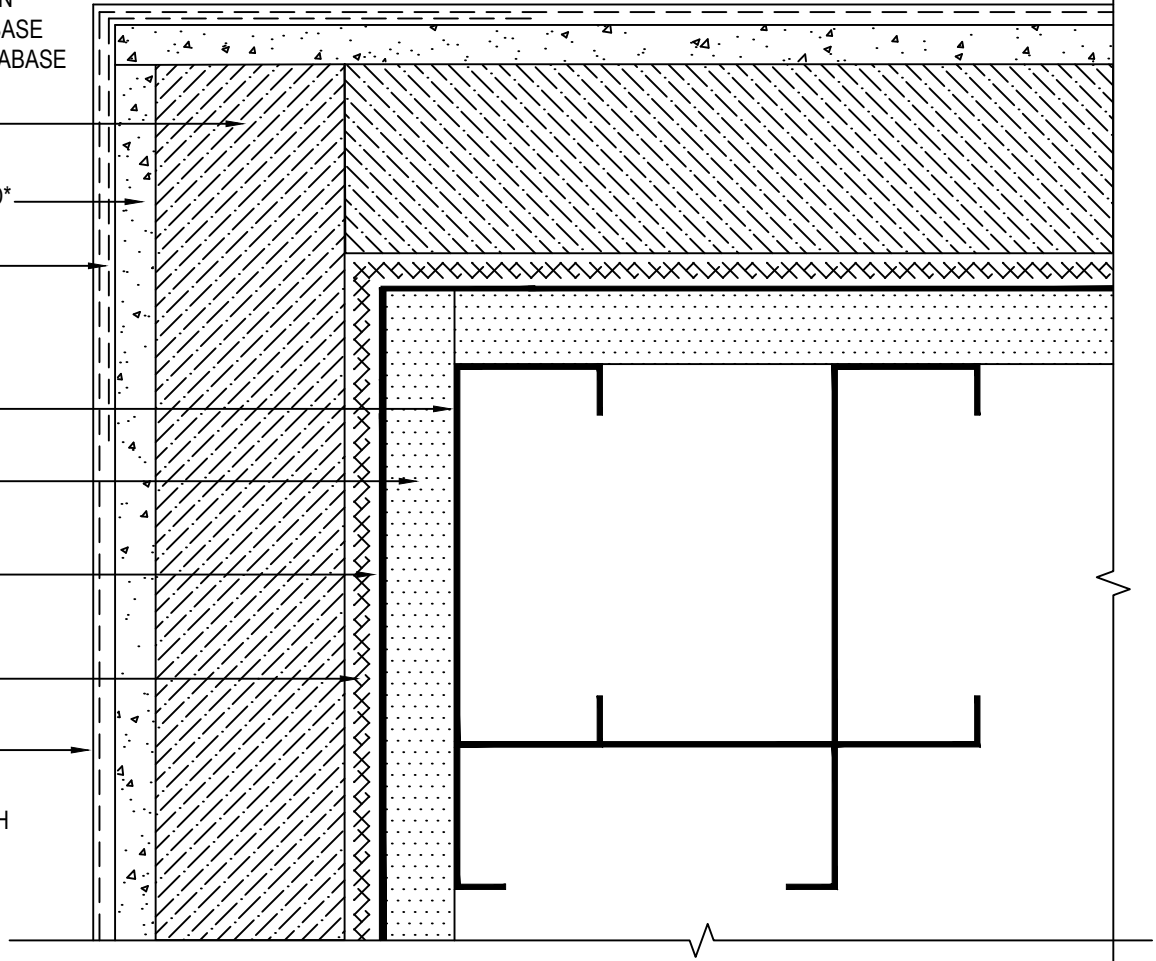
FRAMING\*

ACCEPTABLE SHEATHING\*

FINESTOP RA/FINESTOP RS/  
FINESTOP VB

MASTER BUILDERS SOLUTIONS  
DRAINAGE MAT

FINESTONE LAMINA:  
FINESTONE BASE COAT  
FINESTONE REINFORCING MESH  
FINESTONE FINISH COAT



\*BY OTHERS

## TYPICAL OUTSIDE CORNER DETAIL RABBET JOINT (PLAN VIEW) FINESTONE FINESCREEN 1000 CI SYSTEM

SCALE: NTS

15a

Finestone is a brand of Master Builders Solutions. Structure, substrates, flashing, sealant and other items which are not part of the Finestone *Finescreen 1000 CI System* are the responsibility of others. This detail is subject to change without notice. Master Builders Solutions accepts no liability for the end use of this detail. For conditions not shown, consult Master Builders Solutions for review of specific detail.

 **FINESTONE®**

FRAMING\*

ACCEPTABLE SHEATHING\*

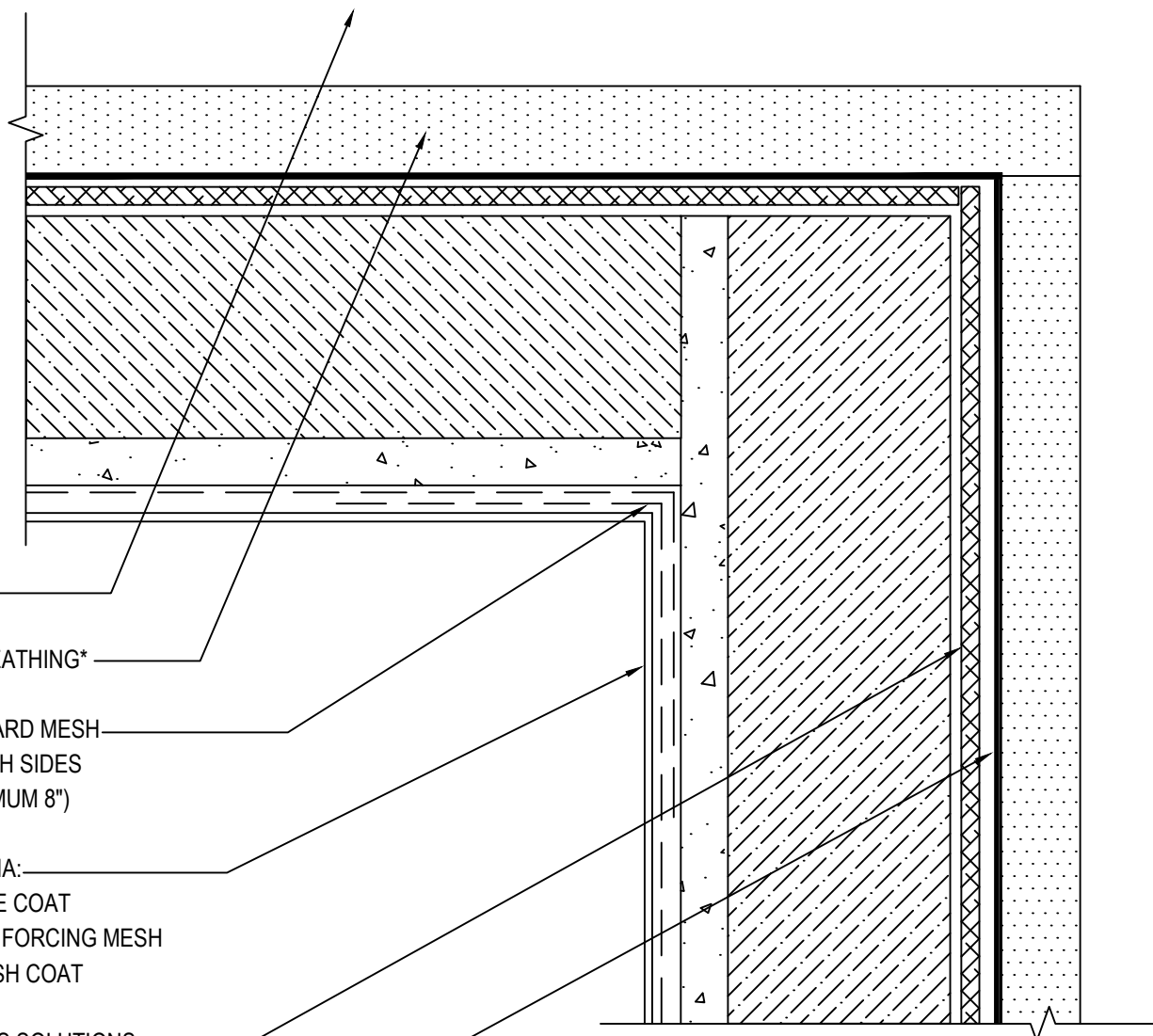
2 LAYERS STANDARD MESH  
(WRAP FROM BOTH SIDES  
OF CORNER MINIMUM 8")

FINESTONE LAMINA:  
FINESTONE BASE COAT  
FINESTONE REINFORCING MESH  
FINESTONE FINISH COAT

MASTER BUILDERS SOLUTIONS  
DRAINAGE MAT

FINESTOP RA/FINESTOP RS/  
FINESTOP VB

\*BY OTHERS



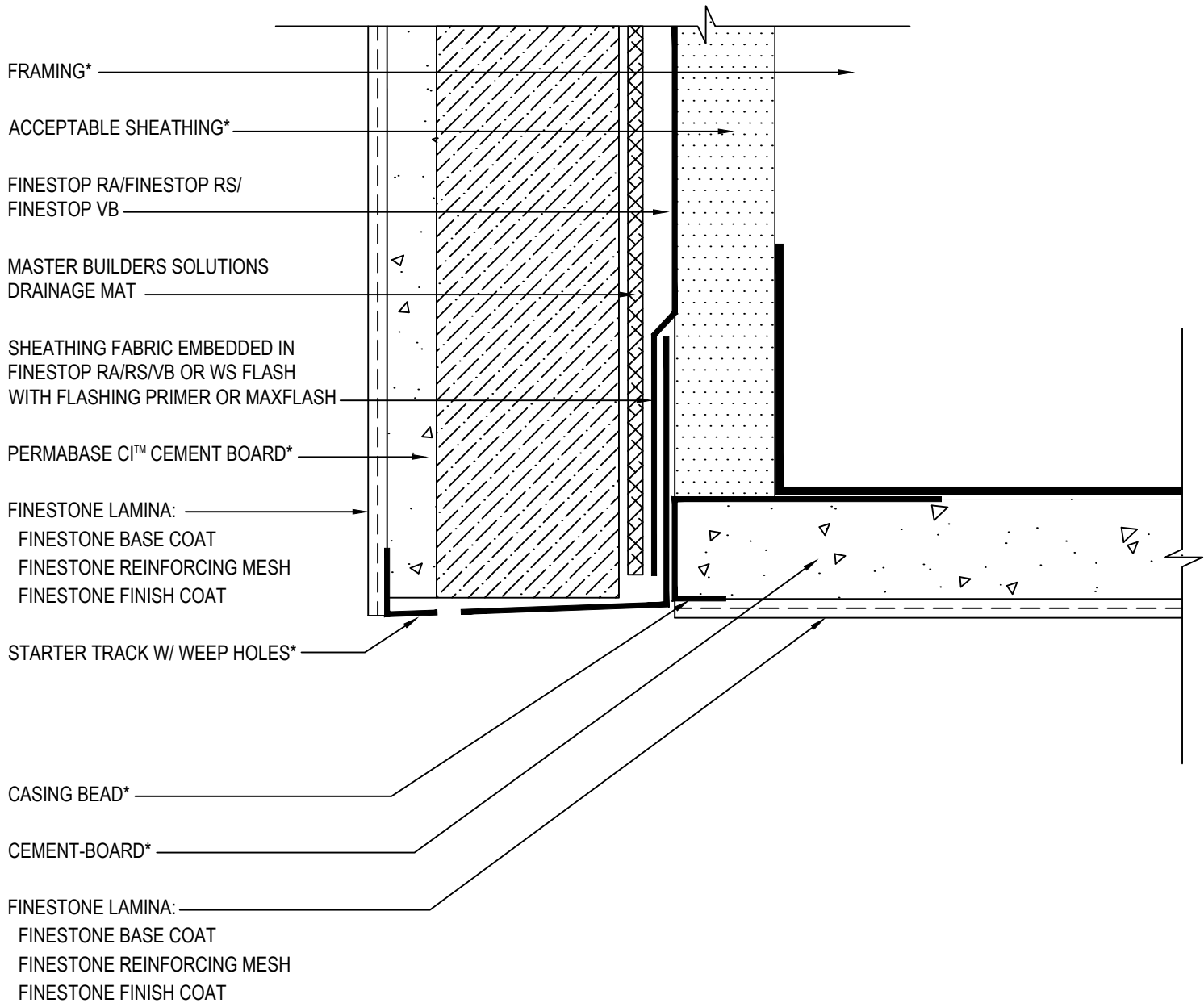
## TYPICAL INSIDE CORNER DETAIL FINESTONE FINESCREEN 1000 CI SYSTEM

SCALE: NTS

16

Finestone is a brand of Master Builders Solutions. Structure, substrates, flashing, sealant and other items which are not part of the Finestone *Finescreen 1000 CI System* are the responsibility of others. This detail is subject to change without notice. Master Builders Solutions accepts no liability for the end use of this detail. For conditions not shown, consult Master Builders Solutions for review of specific detail.

 **FINESTONE®**



\*BY OTHERS

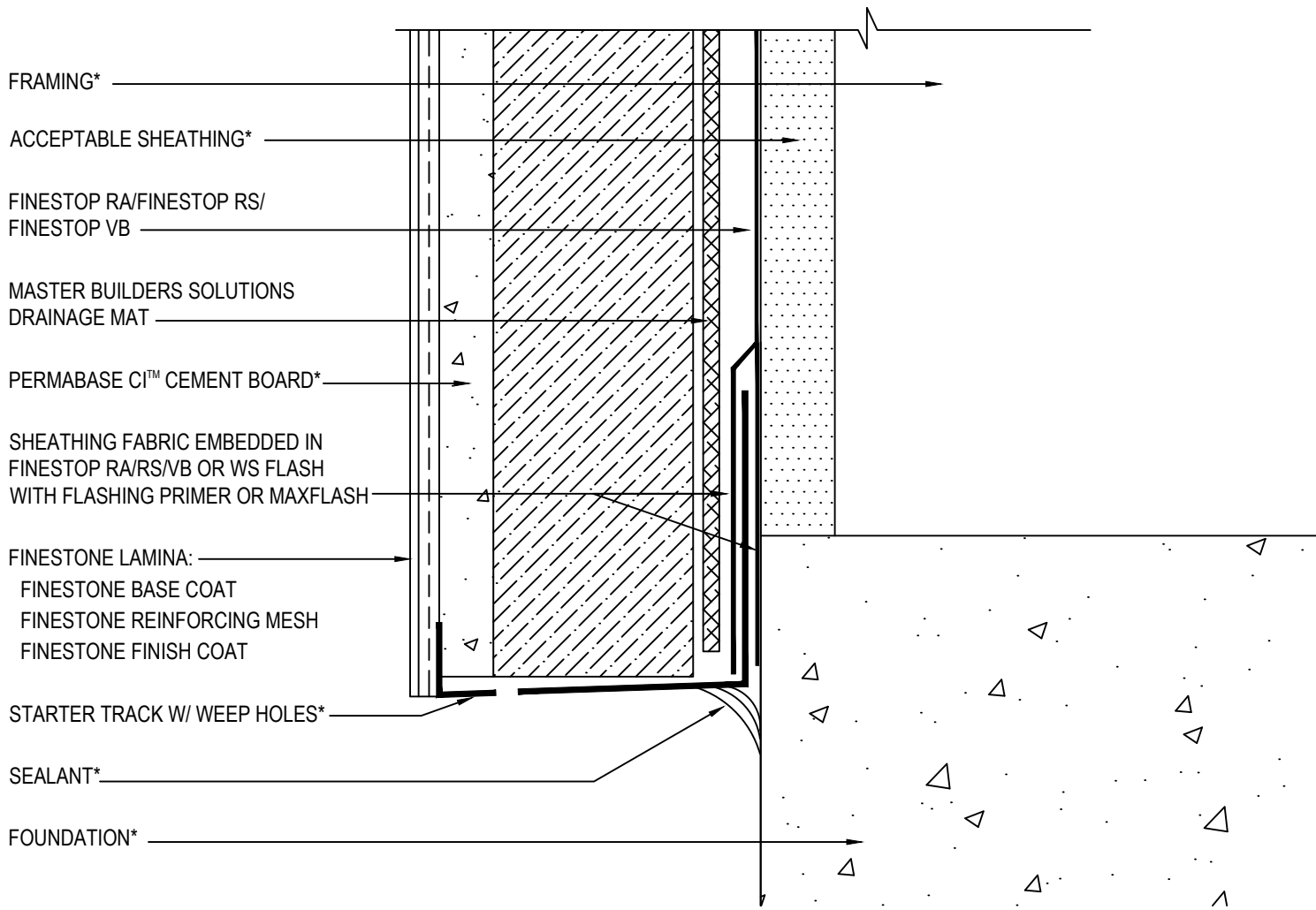
## TYPICAL FASCIA / SOFFIT FINESTONE FINESCREEN 1000 CI SYSTEM

SCALE: NTS

17

Finestone is a brand of Master Builders Solutions. Structure, substrates, flashing, sealant and other items which are not part of the Finestone *Finescreen 1000 CI System* are the responsibility of others. This detail is subject to change without notice. Master Builders Solutions accepts no liability for the end use of this detail. For conditions not shown, consult Master Builders Solutions for review of specific detail.





\*BY OTHERS

**NOTE:**  
 TERMINATE FINESTONE FINESCREEN 1000 CI SYSTEM MIN. 6" (152 mm) ABOVE UNFINISHED GRADE. TERMINATE MIN 1" (25 mm) ABOVE FINISHED GRADE.  
 EXTEND FINESCREEN 1000 CI OVER FOUNDATION MIN. 2" (50 mm).

## TYPICAL TERMINATION AT FOUNDATION FINESTONE FINESCREEN 1000 CI SYSTEM

SCALE: NTS  
**18**

Finestone is a brand of Master Builders Solutions. Structure, substrates, flashing, sealant and other items which are not part of the Finestone *Finescreen 1000 Ci System* are the responsibility of others. This detail is subject to change without notice. Master Builders Solutions accepts no liability for the end use of this detail. For conditions not shown, consult Master Builders Solutions for review of specific detail.



METAL COPING\*

EXTEND FINESTOP RA/RS/VB ONTO  
BOTTOM AND FACE OF BLOCKING

MIN. 2" (50 mm)

SEALANT\*

FRAMING\*

ACCEPTABLE SHEATHING\*

FINESTOP RA/FINESTOP RS/  
FINESTOP VB

MASTER BUILDERS SOLUTIONS  
DRAINAGE MAT

PERMABASE CI™ CEMENT BOARD\*

FINESTONE LAMINA:  
FINESTONE BASE COAT  
FINESTONE REINFORCING MESH  
FINESTONE FINISH COAT

\*BY OTHERS

## TYPICAL METAL COPING DETAIL

### FINESTONE FINESCREEN 1000 CI SYSTEM

SCALE: NTS

19

Finestone is a brand of Master Builders Solutions. Structure, substrates, flashing, sealant and other items which are not part of the Finestone *Finescreen 1000 CI System* are the responsibility of others. This detail is subject to change without notice. Master Builders Solutions accepts no liability for the end use of this detail. For conditions not shown, consult Master Builders Solutions for review of specific detail.

 **FINESTONE®**

FRAMING\*

ACCEPTABLE SHEATHING\*

FINESTOP RA/FINESTOP RS/  
FINESTOP VB

MASTER BUILDERS SOLUTIONS  
DRAINAGE MAT

PERMABASE CI™ CEMENT BOARD\*

SHEATHING FABRIC EMBEDDED IN  
FINESTOP RA/RS/VB OR WS FLASH  
WITH FLASHING PRIMER OR MAXFLASH

FINESTONE LAMINA:  
FINESTONE BASE COAT  
FINESTONE REINFORCING MESH  
FINESTONE FINISH COAT

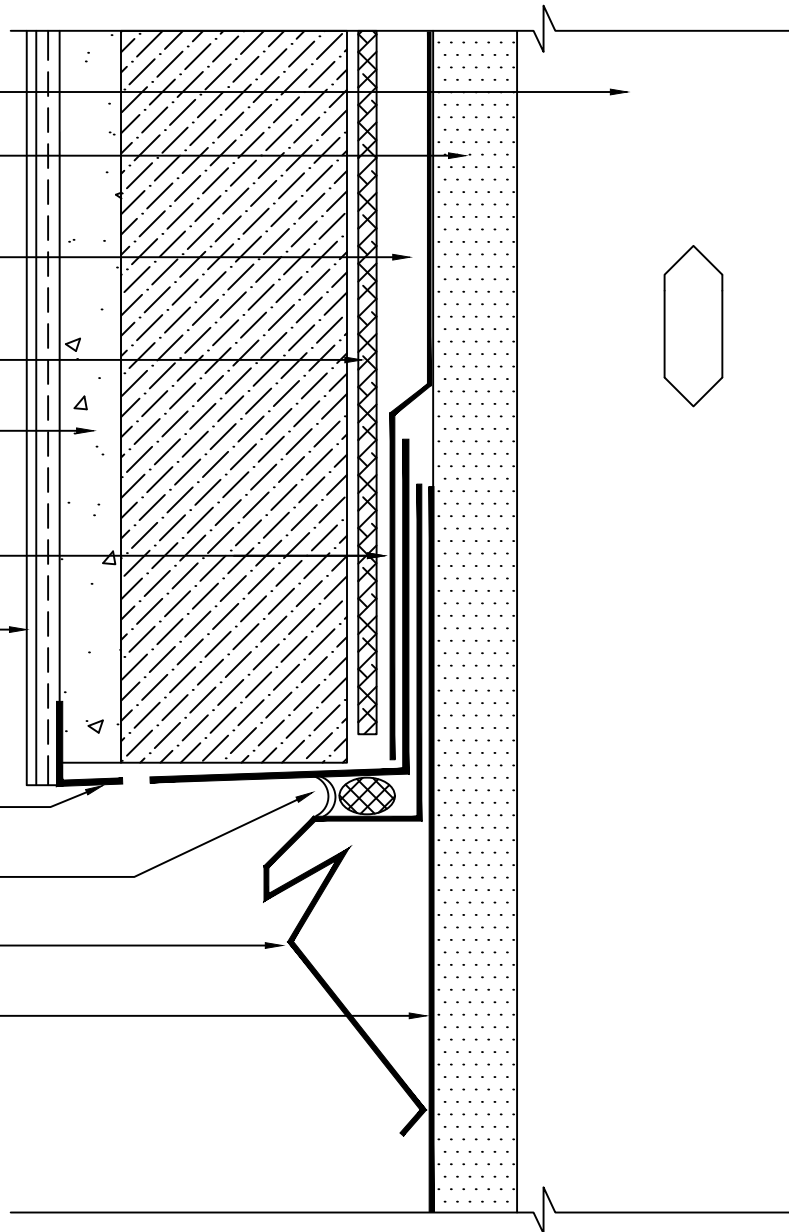
STARTER TRACK W/ WEEP HOLES\*

BACKER ROD AND SEALANT\*

COUNTER FLASHING\*

ROOFING\*

\*BY OTHERS



**NOTE:**  
 TERMINATE FINESTONE FINESCREEN 1000 CI SYSTEM MIN.  
 8" (203 mm) ABOVE ROOF SURFACE.  
 DO NOT EXTEND ROOFING PAST FLASHING FLANGE.

## TYPICAL TERMINATION ABOVE FLAT ROOF FINESTONE FINESCREEN 1000 CI SYSTEM

SCALE: NTS

20

Finestone is a brand of Master Builders Solutions. Structure, substrates, flashing, sealant and other items which are not part of the Finestone *Finescreen 1000 Ci System* are the responsibility of others. This detail is subject to change without notice. Master Builders Solutions accepts no liability for the end use of this detail. For conditions not shown, consult Master Builders Solutions for review of specific detail.





**Master Builders Solutions Construction Systems US, LLC**

889 Valley Park Drive  
Shakopee, MN 55379, USA

[finestone.master-builders-solutions.com/en](https://finestone.master-builders-solutions.com/en)

**Customer Service** +1 (800) 433-9517

**Technical Service** +1 (800) 589-1336

© MBCC Group, Printed in the U.S.A. rev 04/2021

® registered trademark of a MBCC Group member in many countries of the world