

Wall Systems Selection Guide

Extensive portfolio of design
and performance options to
meet your needs.



Wall Systems Selection Guide

Platinum CI Wall Systems

CI Wall Systems

Cladding Design Criteria:	Platinum CI Wall Systems				Pebbletex	
	CI	CI Stucco Ultra	CI Stucco Plus	CI Stucco	DCA	DCA with Channeled Insulation
New construction under 6 stories	✓	✓	✓	✓	✓	✓
New construction over 6 stories	✓	⊖	⊖	⊖	✓	✓
Renovation (over existing cladding)	⊖	⊖	⊖	⊖	⊖	⊖
Panelized - prefabricated off-site	✓	✗	✗	✗	✓	✓
Masonry or poured concrete substrate	✓	⊖	⊖	⊖	✓	✓
Water management with drainage	✓	✓	✓	✓	✓	✓
Continuous exterior insulation	✓	✓	✓	✓	✓	✓
Fluid applied air barrier incorporated	✓	✓	✓	⊖	✓	✓
No control joints	✓	✗	✗	✗	✓	✓
Advanced GPS Plus insulation included	✓	✓	✓	✓	✗	✗
Multiple decorative finish options	✓	⊖	⊖	⊖	✓	✓
Maximum design flexibility	✓	✗	✗	✗	✓	✓

✓ System suitable for this criteria

⊖ System may be suitable for this criteria under certain conditions, contact our Technical Services Department to discuss your specific project requirements

✗ System is not suitable for this criteria



Exterior Insulation and Finish Systems

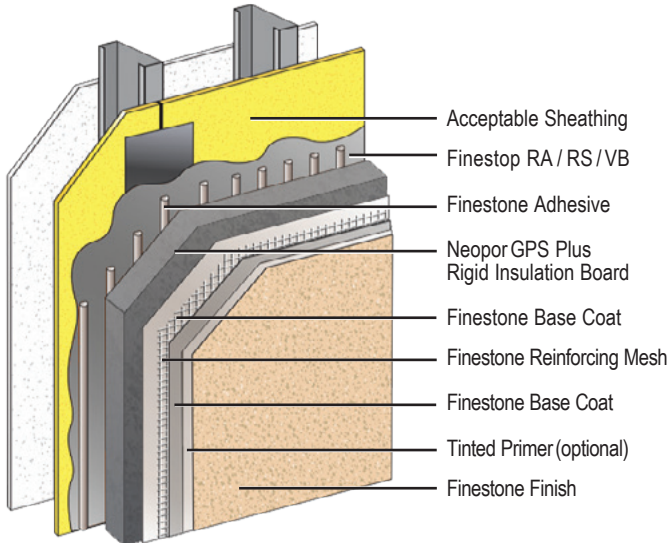
Stucco Assemblies

Legacy Systems		Pebbletex Wall Systems			Stucco Wall Systems			Finescreen 1000
Adhered Mat Design	Classic PB	D	D7	D10	Finestone Stucco Ultra	Finestone Stucco Plus	Finestone Stucco	
✓	✓	✓	✓	✓	✓	✓	✓	✓
✓	✓	⊖	⊖	⊖	⊖	⊖	⊖	⊖
⊖	⊖	⊖	⊖	⊖	⊖	⊖	⊖	✗
⊖	✓	⊖	⊖	⊖	✗	✗	✗	✗
⊖	✓	⊖	⊖	⊖	⊖	⊖	✓	⊖
✓	✗	✓	✓	✓	✓	✓	✓	✓
✓	✓	✓	✓	✓	⊖	⊖	⊖	✗
✓	⊖	✗	⊖	⊖	✓	✓	⊖	⊖
✓	✓	✓	✓	✓	✗	✗	✗	✗
✗	✗	✗	✗	✗	✗	✗	✗	✗
✓	✓	✓	✓	✓	⊖	⊖	⊖	✗
✓	✓	✗	✗	✗	✗	✗	✗	✗

Platinum Wall Systems

Platinum CI wall systems are Continuously Insulated (CI) systems featuring Neopor® advanced insulation technology. Silver-gray Neopor Rigid Insulation Board is a patented insulation material with graphite embedded into the polymer matrix. It exceeds ASTM C578 Type I and Type II requirements.

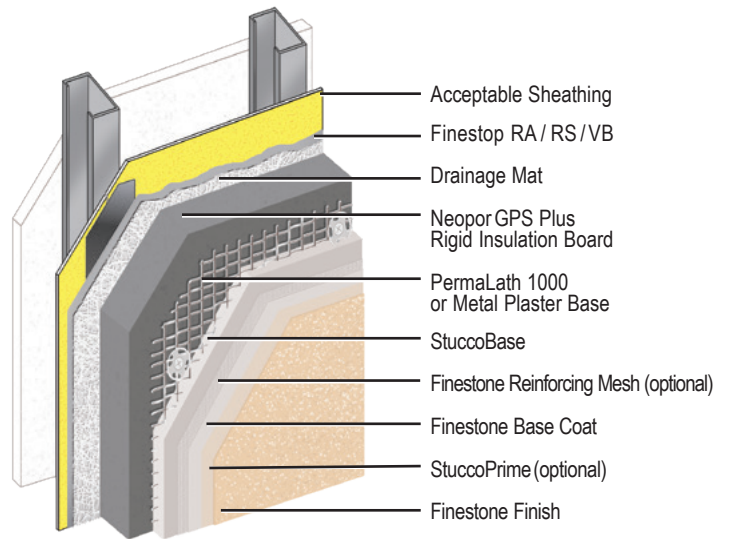
Platinum CI*



Finestone Platinum CI (Continuous Insulation) is an exterior cladding system featuring Neopor® advanced insulation technology.

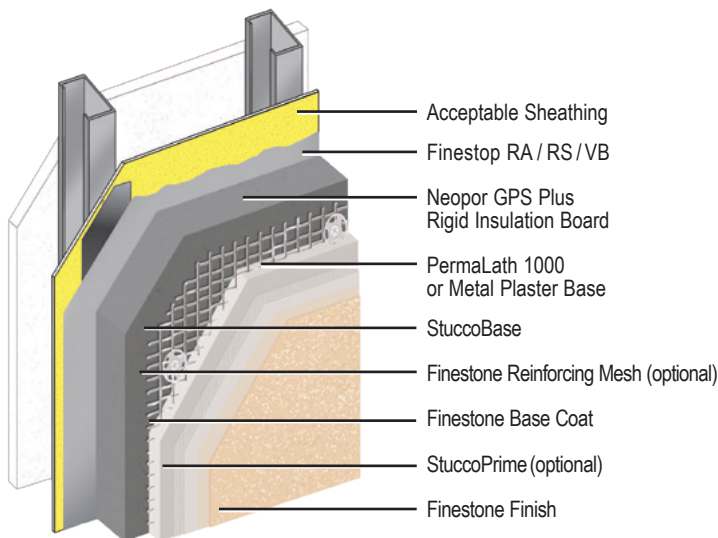
*** NOTE: NEOPOR GPS PLUS Rigid Insulation Board requires supplementary fasteners installed immediately after the board is adhesively attached and prior to the drying of the adhesive / base coat.**

Platinum CI Stucco Ultra



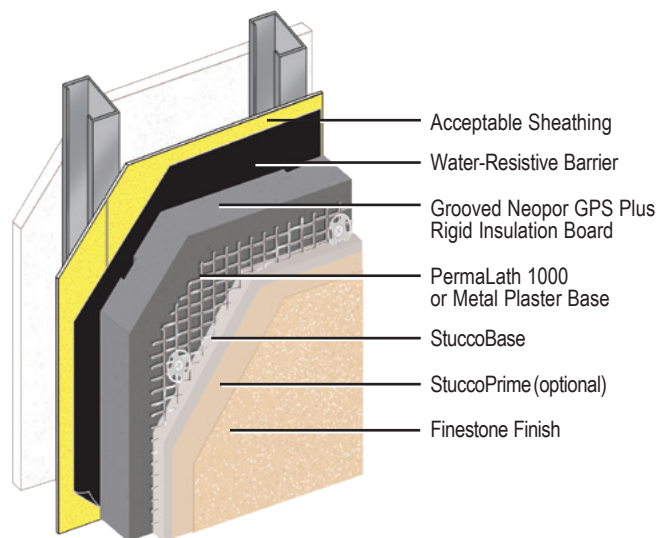
Finestone Platinum CI Stucco Ultra is a premium continuously insulated cement plaster/stucco rain screen system with enhanced water management featuring Neopor GPS Plus Rigid Insulation Board.

Platinum CI Stucco Plus



Finestone Platinum CI Stucco Plus is a premium continuously insulated cement plaster/stucco featuring Neopor GPS Plus Rigid Insulation Board and a fluid-applied air/water-resistive barrier.

Platinum CI Stucco

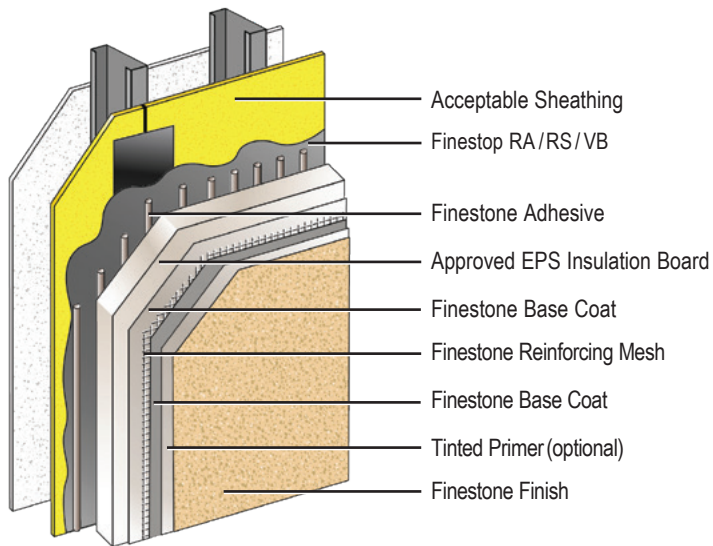


Finestone Platinum CI Stucco is a continuously insulated cement plaster/stucco system featuring Neopor GPS Plus Rigid Insulation Board.

Finestone Wall Systems

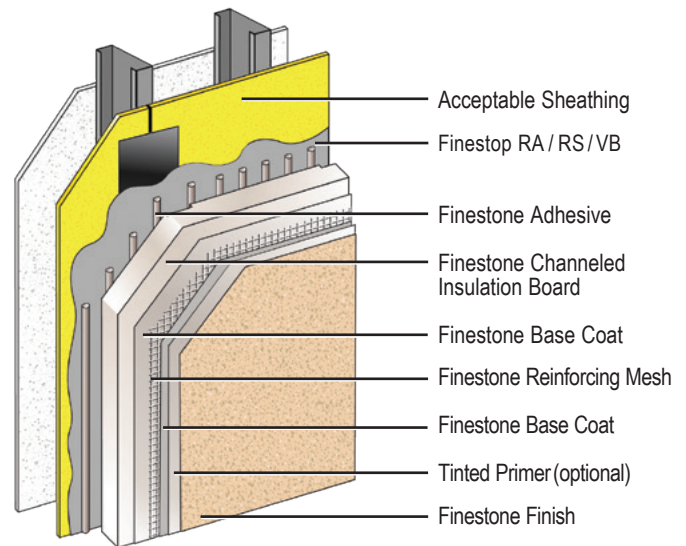
Finestone Wall Systems are used for exterior walls in new and retrofit commercial and residential construction. They provide a water-resistive barrier, crack resistance and reduced energy costs, where exterior continuous insulation and higher water management are design considerations.

Pebbletex DCA



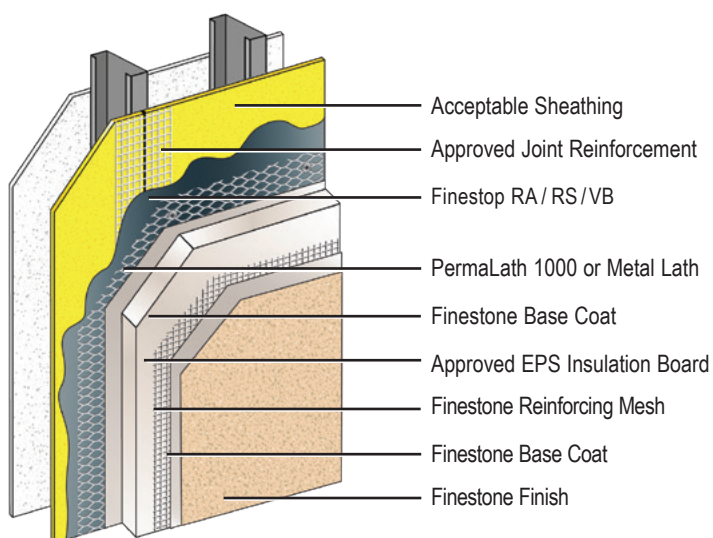
Pebbletex DCA is an adhesively attached, continuously insulated water-drainage exterior cladding incorporating vertical drainage channels and a secondary air/water-resistive barrier.

DCA with Channeled Insulation



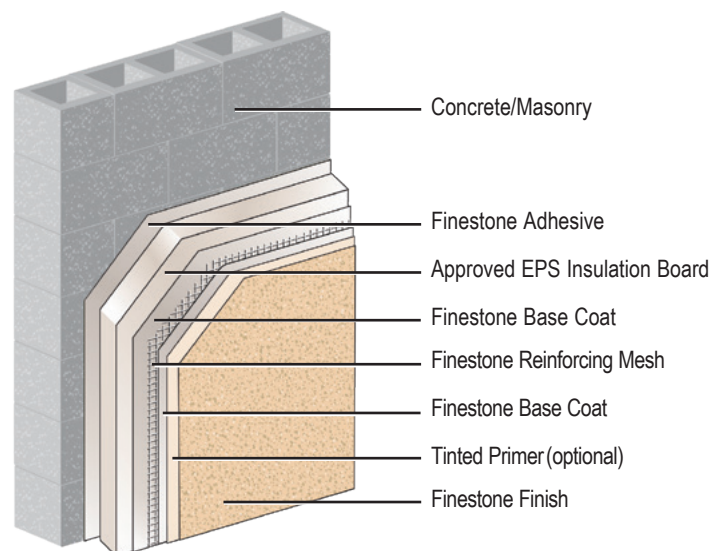
DCA with Channeled Insulation is an adhesively attached, continuously insulated water-drainage exterior cladding incorporating channeled EPS insulation boards and a secondary air/water-resistive barrier for added water management security.

Adhered Mat Design



Adhered Mat Design is an EIFS with drainage incorporating an unobstructed drainage plane and an air/water-resistive barrier that provides maximum wind load resistance.

Classic PB

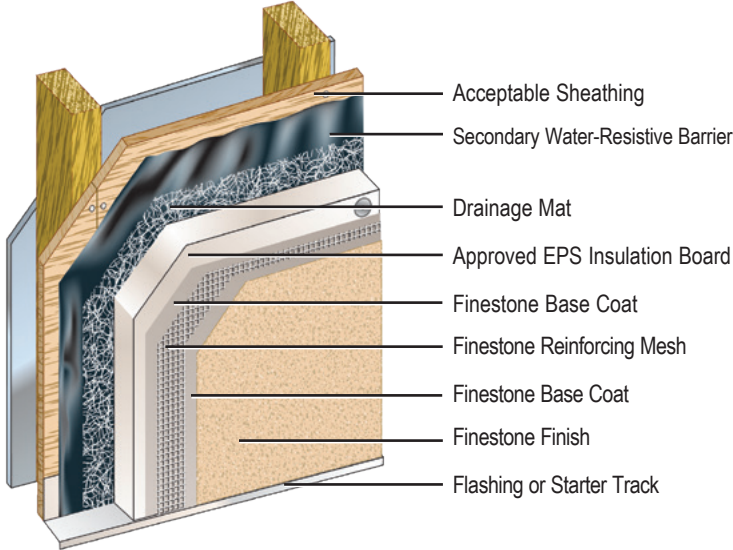


Classic PB is a mechanically and/or adhesively attached, non-drainage Class PB EIFS which provides primary barrier moisture control.

Pebbletex Wall Systems

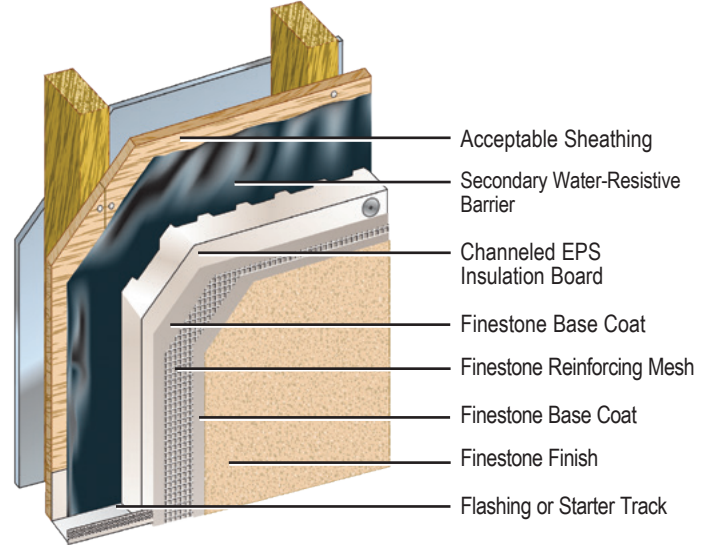
Mechanically attached Class PB EIFS, with drainage that include a water-resistive barrier, used in light commercial and residential construction.

Pebbletex D10



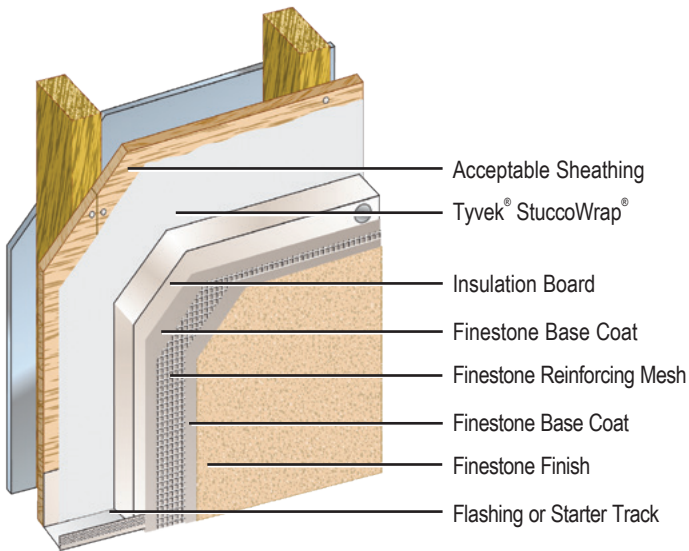
Pebbletex D10 is a mechanically attached Class PB EIFS with drainage incorporating a pre-formed drainage mat and a water-resistive barrier to provide an unobstructed drainage plane.

Pebbletex D7



Pebbletex D7 is a mechanically attached Class PB EIFS with drainage incorporating a channeled EPS insulation board and a water-resistive barrier.

Pebbletex D



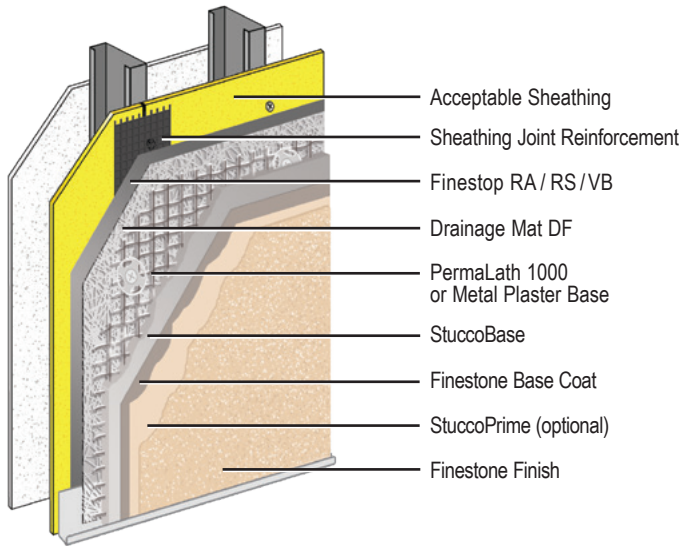
Pebbletex I is a mechanically attached Class PB EIFS with drainage incorporating Tyvek StuccoWrap water-resistive barrier.



Stucco Wall Systems

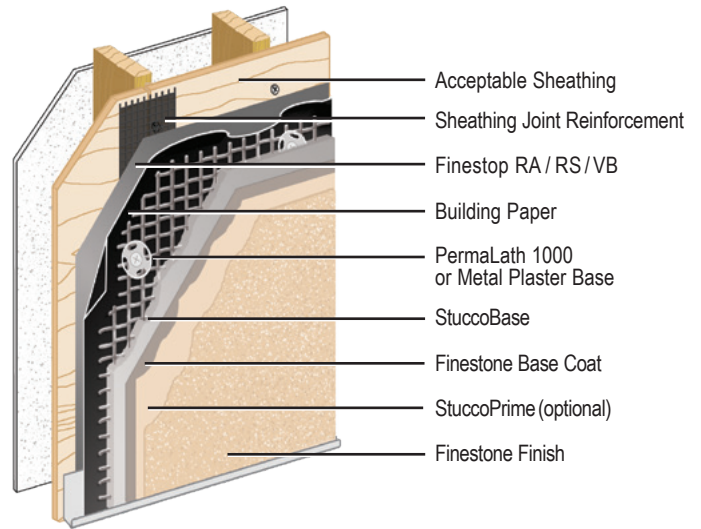
Impact and puncture resistant, cement plaster/stucco systems used in new or retrofit commercial, institutional and residential low-rise construction such as hotels, hospitals, retail centers, schools, multi-family apartments and condominiums, and government facilities.

Stucco Ultra



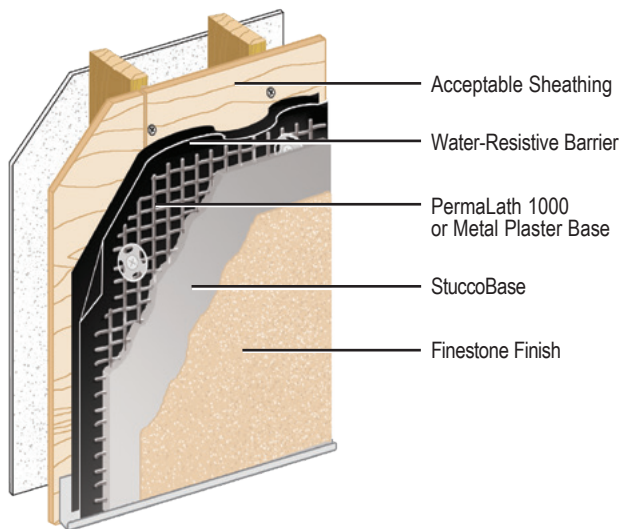
Finestone Stucco Ultra is a highly advanced Portland cement-based exterior wall system. Its features a rainscreen design for maximum water management security, a fluid-applied air/water-resistant barrier, drainage mat, available rustproof fiberglass lath, a base coat and textured finishes.

Stucco Plus



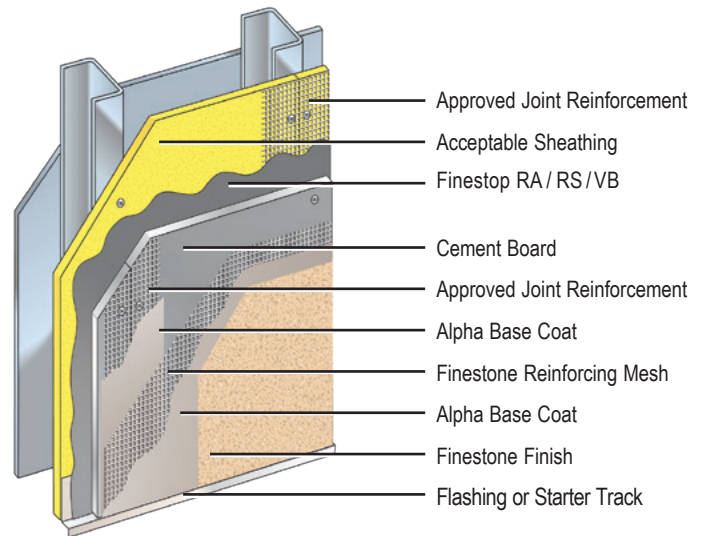
Finestone Stucco Plus is a highly advanced Portland cement-based exterior wall system. It features a fluid-applied air/water-resistant barrier, available rustproof fiberglass lath, a base coat and textured finishes.

Stucco



Finestone Stucco Wall System is a Portland cement-based exterior wall system.

Cement Board Stucco



Finescreen 1000 is a highly impact and puncture resistant wall system with the look of stucco.

Master Builders Solutions
Constructions Systems US, LLC
889 Valley Park Drive
Shakopee, MN 55379 USA

Customer Service (800) 433-9517
Technical Service (800) 589-1336
finestone.master-builders-solutions.com/en



© registered trademark of a Group member
in many countries of the world

© 2021 MBCC Group, 45206860 rev 04/2021

LIMITED WARRANTY NOTICE: Master Builders Solutions Construction Systems US, LLC ("Master Builders") warrants this product to be free from manufacturing defects and to meet the technical properties on the current Technical Data Guide, if used as directed within shelf life. Satisfactory results depend not only on quality products but also upon many factors beyond our control. Master Builders **MAKES NO OTHER WARRANTY OR GUARANTEE, EXPRESS OR IMPLIED, INCLUDING WARRANTIES OF MERCHANTABILITY OR FITNESS FOR A PARTICULAR PURPOSE WITH RESPECT TO ITS PRODUCTS.** The sole and exclusive remedy of Purchaser for any claim concerning this product, including but not limited to, claims alleging breach of warranty, negligence, strict liability or otherwise, is shipment to purchaser of product equal to the amount of product that fails to meet this warranty or refund of the original purchase price of product that fails to meet this warranty, at the sole option of Master Builders. Any claims concerning this product must be received in writing within one (1) year from the date of shipment and any claims not presented within that period are waived by Purchaser. Master Builders **WILL NOT BE RESPONSIBLE FOR ANY SPECIAL, INCIDENTAL, CONSEQUENTIAL (INCLUDING LOST PROFITS) OR PUNITIVE DAMAGES OF ANY KIND.**

Purchaser must determine the suitability of the products for the intended use and assumes all risks and liabilities in connection therewith. This information and all further technical advice are based on Master Builders present knowledge and experience. However, Master Builders assumes no liability for providing such information and advice including the extent to which such information and advice may relate to existing third party intellectual property rights, especially patent rights, nor shall any legal relationship be created by or arise from the provision of such information and advice. Master Builders reserves the right to make any changes according to technological progress or further developments. The Purchaser of the Product(s) must test the product(s) for suitability for the intended application and purpose before proceeding with a full application of the product(s). Performance of the product described herein should be verified by testing and carried out by qualified experts.