

Insulated Masonry Veneer Systems

Fully integrated, code-compliant
wall systems with unlimited
aesthetic options



Insulated Masonry Veneer Systems

Superior performance
with unlimited aesthetic possibilities

As design trends evolve toward multi-cladding with stone and brick; architects, designers, building owners and other construction professionals are seeking alternatives that can help them achieve the required performance and multi-cladding aesthetic. Finestone Wall Systems has designed the Insulated Masonry Veneer System to specifically meet the challenges of multi-cladding construction, creating the look and feel your clients want, with code compliance and building performance you need, at a cost that facilitates project success.



Arlington, Texas



Charlotte, North Carolina

Reduced complexity

Achieve a multi-cladding aesthetic from masonry veneer to metal, wood and so much more over a continuously insulated (CI) wall system from one manufacturer. Eliminate extra work detailing complex transitions between multiple claddings and manufacturers.

Masonry veneer

Featuring MaxGrip Veneer Mortar, the high-strength mortar, is used to adhere up to 15 psf of natural and manufactured stone, ceramic tile, and thin brick veneer without the need to use mechanical fasteners or Z-girls, saving time and money, and eliminating the risk of mortar failure.

Energy efficiency

Achieve the desired masonry veneer aesthetic without compromising the continuous exterior insulation. Seamless integration of continuous insulation, weather barrier and drainage ensures optimum heat, air and moisture control. MaxGrip Veneer Mortar is strong enough to adhere masonry veneer without the use of mechanical fasteners, keeping these critical control layers intact, which eliminates thermal bridging and reduces the risk of moisture intrusion.

Jobsite productivity

Take the headache out of coordinating the sequence of trades and products from multiple manufacturers. The Insulated Masonry Veneer System can be installed by a single applicator, helping you complete the job on time and within budget.

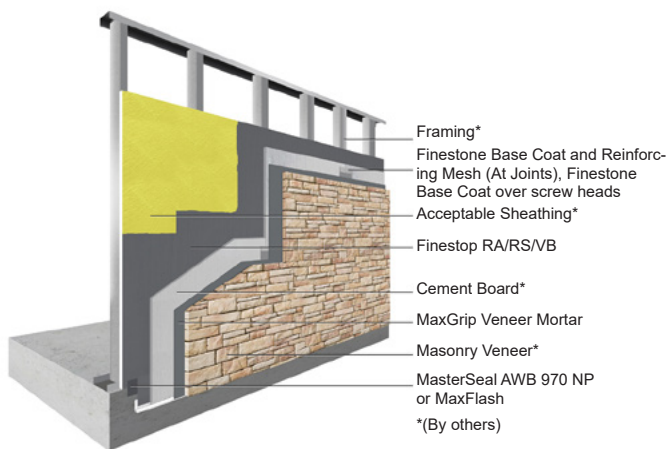
Build with confidence

Fully tested and evaluated to ensure components work as a code-compliant system, the Insulated Masonry Veneer System is listed by ICC Evaluation Service in ESR-1878 evaluation report and complies with NFPA 285 standard.

Non-Insulated Masonry Veneer Systems

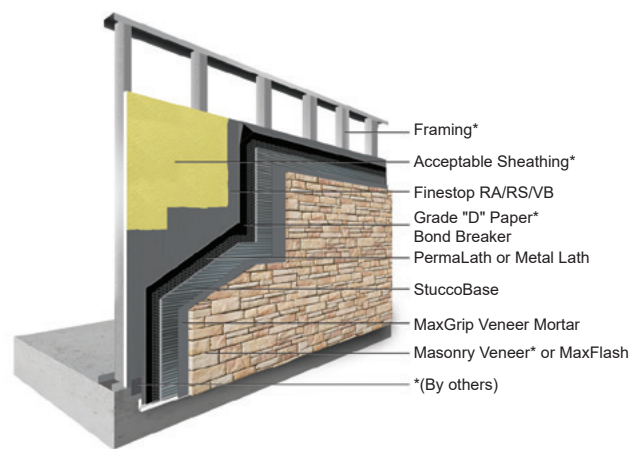
The power of choice at your fingertips

Finestone's comprehensive portfolio of Masonry Veneer Systems empowers you to select the system that best meets your building enclosure and exterior finish objectives. MaxGrip Veneer Mortar is compatible with a variety of substrates, including cement board, stucco, concrete, CMU, and over Finestone air/water resistive barriers.



Finescreen 1000 with MaxGrip Veneer Mortar

A highly impact and puncture resistant, water-drainage wall system incorporating a cement board core, reinforced base coat and MaxGrip Veneer Mortar.



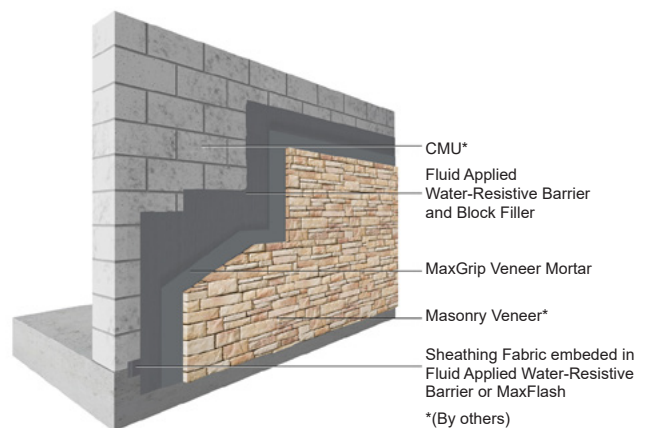
Finestone Stucco Plus with MaxGrip Veneer Mortar

An impact and puncture resistant, cement plaster stucco system, which incorporates a Finestop RA, RS and VB air and water-resistive barrier to provide a premium level of protection to the sheathing and cavity against moisture and air intrusion and features MaxGrip Veneer Mortar.



Finestone Stucco Ultra with MaxGrip Veneer Mortar

An impact and puncture resistant, cement plaster stucco system with enhanced water management. It incorporates a Finestop RA, RS and VB air and water-resistive barrier to provide a premium level of protection to the sheathing and cavity against moisture and air intrusion and MaxGrip Veneer Mortar.

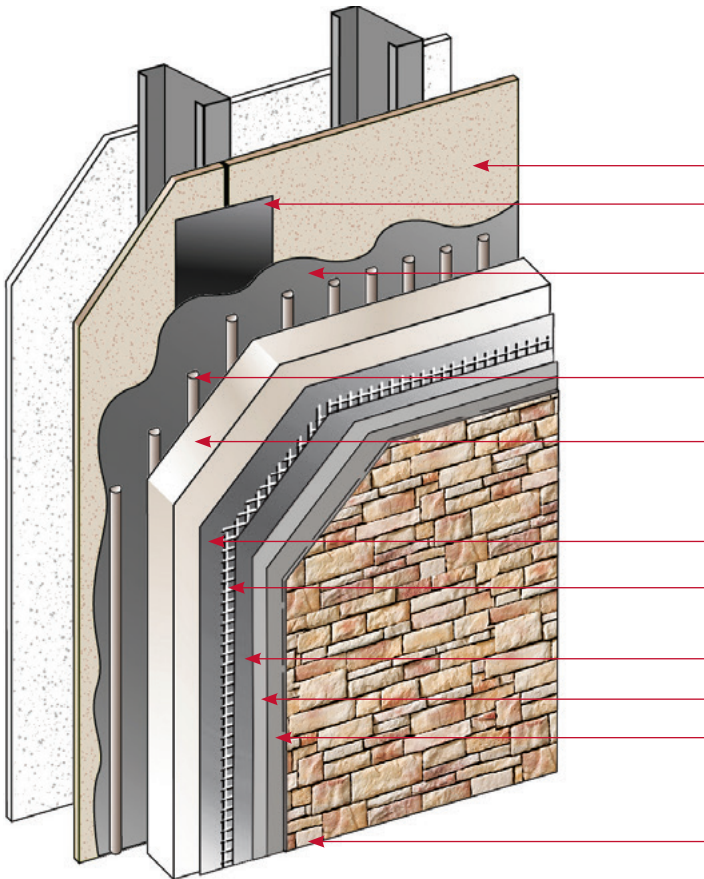


Concrete Masonry Unit with MaxGrip Veneer Mortar

Concrete Masonry Unit with Finestop RA, RS and VB fluid-applied air/water-resistive barrier and MaxGrip Veneer Mortar.

Pebbletex CI-DCA with MaxGrip Veneer Mortar

Innovative, high-performance wall system
with unlimited aesthetic options



A fully integrated wall system with continuous insulation, air/water-resistive barrier and drainage, featuring MaxGrip Veneer Mortar.

1. Acceptable substrate^{†‡}
2. Approved Joint Reinforcement: MaxFlash or Sheathing Fabric embedded in Finestop RA/RS/VB
3. Finestop RA/RS/VB
Fluid-applied air and water-resistive barrier provides effective air and moisture protection
4. Finestone Adhesive
Drainage plane for effective moisture control
5. Approved EPS Insulation Board[‡]
Continuous exterior insulation delivers optimal energy efficiency
6. Finestone Base Coat
7. Intermediate 12 Reinforcing Mesh
Structural wall support impact resistance
8. Finestone Base Coat
9. Skim Coat of MaxGrip Veneer Mortar
10. MaxGrip Veneer Mortar
High strength, setting bed mortar, used to adhere a variety of masonry veneers
11. Adhered Veneer[‡]
Compatible with a variety of masonry veneers, from stone to tile and thin brick

Code Compliance

Document	Description
ICC ESR-2186	Complies with 2018 and 2015 IBC and IRC
ASTM E2568 / AC 235	Complies with requirements
ASTM E119	Does not detract from fire rating of base wall
NFPA 285 and 268	Acceptable on non-combustible construction
ICC-ESR 2986 (Finestop RA/RS)	Air/water-resistive barrier*
Air Barrier Association of America recognized (Finestop RA/RS/VB)	Can be used on projects where ABAA recognized air barriers are specified

*Finestop RA/RS/VB can be used behind all claddings where more than one wall system is specified, creating one continuous AWRB system. This is appropriate whenever Finestone Pebbletex CI-DCA with MaxGrip Veneer Mortar is used with other cladding types on a multi-clad building.

[†]Acceptable substrates:
PermaBase[®] Cement Board and other cement boards conforming with ASTM C1325 (Type A - exterior); poured concrete/unit masonry; ASTM C1177 type sheathings, including Weather Defense[™] Platinum sheathing, GreenGlass[®] sheathing, eXPTM sheathing, GlasRoc[®] sheathing, Securock[™] glass-mat sheathing, and DensGlass[®] exterior sheathing; DensElement (sheathing only), gypsum sheathing (ASTM C79/C1396); Exposure I or exterior plywood (Grade C/D or better); or Exposure I OSB; Huber Zip (sheathing only).

[‡]By other manufacturer

MaxGrip Veneer Mortar

Maximum strength and adhesion

High-strength and specially formulated, MaxGrip Veneer Mortar is a setting bed mortar used to adhere up to 15 PSF of natural and manufactured stone*, ceramic tile†, and thin brick veneer‡ to a broad range of substrates. No mechanical fasteners required.

- Complies with ANSI 118.4, the American National Standard Specifications for Modified Dry-Set Cement Mortar, sets a minimum standard for modified standard mortars
- Complies with ANSI 118.15, the American National Standard Specifications for Modified Dry-Set Cement Mortar, the most stringent freeze/thaw testing for polymer-modified mortars
- Freeze-thaw stable bond showing resistance to deterioration after repeated temperature cycling per ASTM C-666 (modified using full IVS composite in place of concrete beam)
- Fully tested per ASTM C109, Standard Test Method for Compressive Strength of Hydraulic Cement Mortars



IMVS Seismic and Racking Study



IMVS Short-Term Deflection Study



For complete application recommendations on the use of MaxGrip Veneer Mortar, please review the Product Bulletin.

*Manufactured stone must comply with applicable requirements of ICC-ES Acceptance Criteria AC51 or ASTM C1670.

†Tile shall comply with applicable requirements of the Tile Council of North America and/or ANSI A137.1.

‡Thin brick veneer shall comply with applicable requirements of ASTM C 1088 or per the Brick Industry Association.



Unparalleled support for exceptional outcomes

Building Information Modeling (BIM)

Develop a pre-construction view of your project and reduce waste and rework. Easily view and download content from BIMsmith and BIMobject for free, including Revit files, product specifications, details, videos and other technical data.

Dedicated to your success

Our dedicated team of building enclosure professionals are with you every step of the way, from field representatives to technical support and application specialists, our team is here to help you achieve the best outcomes.

Contact us to learn more or visit:

[Finestone.master-builders-solutions.com/en](https://finestone.master-builders-solutions.com/en)

Technical Support

1(800) 589-1336

wallsystemstechsupport@mbcc-group.com

Customer Service

1(888) 338-7170

finestoneinfo@mbcc-group.com

LIMITED WARRANTY NOTICE: Master Builders Solutions warrants this product to be free from manufacturing defects and to meet the technical properties on the current Product Bulletin, if used as directed within shelf life. Satisfactory results depend not only on quality products but also upon many factors beyond our control. Master Builders Solutions MAKES NO OTHER WARRANTY OR GUARANTEE, EXPRESS OR IMPLIED, INCLUDING WARRANTIES OF MERCHANTABILITY OR FITNESS FOR A PARTICULAR PURPOSE WITH RESPECT TO ITS PRODUCTS. The sole and exclusive remedy of Purchaser for any claim concerning this product, including but not limited to, claims alleging breach of warranty, negligence, strict liability or otherwise, is shipment to purchaser of product equal to the amount of product that fails to meet this warranty or refund of the original purchase price of product that fails to meet this warranty, at the sole option of Master Builders Solutions. In the absence of an extended warranty issued by Master Builders Solutions, any claims concerning this product must be received in writing within one (1) year from the date of shipment and any claims not presented within that period are waived by Purchaser. Master Builders Solutions WILL NOT BE RESPONSIBLE FOR ANY SPECIAL, INCIDENTAL, CONSEQUENTIAL (INCLUDING LOST PROFITS) OR PUNITIVE DAMAGES OF ANY KIND.

Purchaser must determine the suitability of the products for the intended use and assumes all risks and liabilities in connection therewith. This information and all further technical advice are based on Master Builders Solutions's present knowledge and experience. However, Master Builders Solutions assumes no liability for providing such information and advice including the extent to which such information and advice may relate to existing third party intellectual property rights, especially patent rights, nor shall any legal relationship be created by or arise from the provision of such information and advice. Master Builders Solutions reserves the right to make any changes according to technological progress or further developments. The Purchaser of the Product(s) must test the product(s) for suitability for the intended application and purpose before proceeding with a full application of the product(s). Performance of the product described herein should be verified by testing and carried out by qualified experts.

