



FinePanel CI

Prefabricated Wall Systems



A brand of
MASTER[®]
BUILDERS
SOLUTIONS

FinePanel CI

Prefabricated Wall Systems

FinePanel CI systems combine the advantages of Finestone Insulated Wall Systems with the benefits of indoor factory panel fabrication. Controlled conditions allow FinePanel CI to be produced consistently regardless of weather conditions.

Lightweight FinePanel Wall Systems are readily hoisted into place, and provide continuous exterior insulation and secondary moisture protection. A wide range of colors and textures provide tremendous design flexibility, allowing architects to create customized appearances with dramatic visual appeal. Finestone insulated wall systems are proven performers, with hundreds of millions of square feet in service. They offer demonstrated code compliance through third-party testing and evaluation reports, and are supported with a full set of architectural details.

The basic FinePanel Wall System is FinePanel CI. It provides R-5.8 of continuous exterior insulation, using 1.5 inches of 1.0 lb/SF density expanded polystyrene (EPS) foam. Since lightweight FinePanel CI is adhesively fastened, thermal bridging from steel lintels and mechanical fasteners are eliminated.



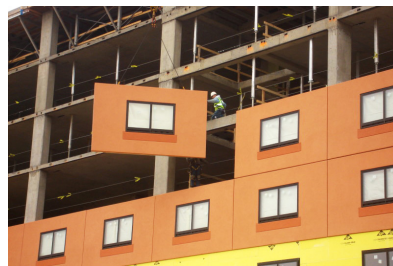
“A wide range of colors and textures provide tremendous design flexibility”

Up to 12” of EPS can be used to provide R-45 continuous exterior insulation...

...while meeting International Building Code (IBC) fire requirements, including NFPA 285 and ASTM E119. This high insulation value can be further improved by replacing conventional EPS with Neopor GPS insulation, which offers up to R-60 at a 12-inch insulation thickness.

While in most cases, use of greater than 4-inches of EPS (R-15.6) is not needed to meet International Energy Conservation Code requirements, the additional thickness allows bumpouts and EPS design features to be added to FinePanel CI without compromising fire performance.

Finestone FinePanel CI is often upgraded to FinePanel CI-D, which includes detailing for moisture drainage. In both cases, a Finestop RA, Finestop RS and Finestop VB fluid applied air/water-resistive barrier provides moisture protection and can be detailed to perform as an air barrier assembly. Where a mixture of cladding types is desired, Finestop RA, Finestop RS and Finestop VB can be used for all panels behind all claddings, simplifying building design and providing high performance with assured air barrier compatibility.



Master Builders Solutions
Constructions Systems US, LLC
889 Valley Park Drive
Shakopee, MN 55379 USA

Customer Service (800) 433-9517
Technical Service (800) 589-1336
finestone.master-builders-solutions.com/en



© registered trademark of a Group member
in many countries of the world

© 2021 MBCC Group, rev 06/2021

LIMITED WARRANTY NOTICE: Master Builders Solutions Construction Systems US, LLC ("Master Builders") warrants this product to be free from manufacturing defects and to meet the technical properties on the current Technical Data Guide, if used as directed within shelf life. Satisfactory results depend not only on quality products but also upon many factors beyond our control. Master Builders **MAKES NO OTHER WARRANTY OR GUARANTEE, EXPRESS OR IMPLIED, INCLUDING WARRANTIES OF MERCHANTABILITY OR FITNESS FOR A PARTICULAR PURPOSE WITH RESPECT TO ITS PRODUCTS.** The sole and exclusive remedy of Purchaser for any claim concerning this product, including but not limited to, claims alleging breach of warranty, negligence, strict liability or otherwise, is shipment to purchaser of product equal to the amount of product that fails to meet this warranty or refund of the original purchase price of product that fails to meet this warranty, at the sole option of Master Builders. Any claims concerning this product must be received in writing within one (1) year from the date of shipment and any claims not presented within that period are waived by Purchaser. Master Builders **WILL NOT BE RESPONSIBLE FOR ANY SPECIAL, INCIDENTAL, CONSEQUENTIAL (INCLUDING LOST PROFITS) OR PUNITIVE DAMAGES OF ANY KIND.**

Purchaser must determine the suitability of the products for the intended use and assumes all risks and liabilities in connection therewith. This information and all further technical advice are based on Master Builders present knowledge and experience. However, Master Builders assumes no liability for providing such information and advice including the extent to which such information and advice may relate to existing third party intellectual property rights, especially patent rights, nor shall any legal relationship be created by or arise from the provision of such information and advice. Master Builders reserves the right to make any changes according to technological progress or further developments. The Purchaser of the Product(s) must test the product(s) for suitability for the intended application and purpose before proceeding with a full application of the product(s). Performance of the product described herein should be verified by testing and carried out by qualified experts.