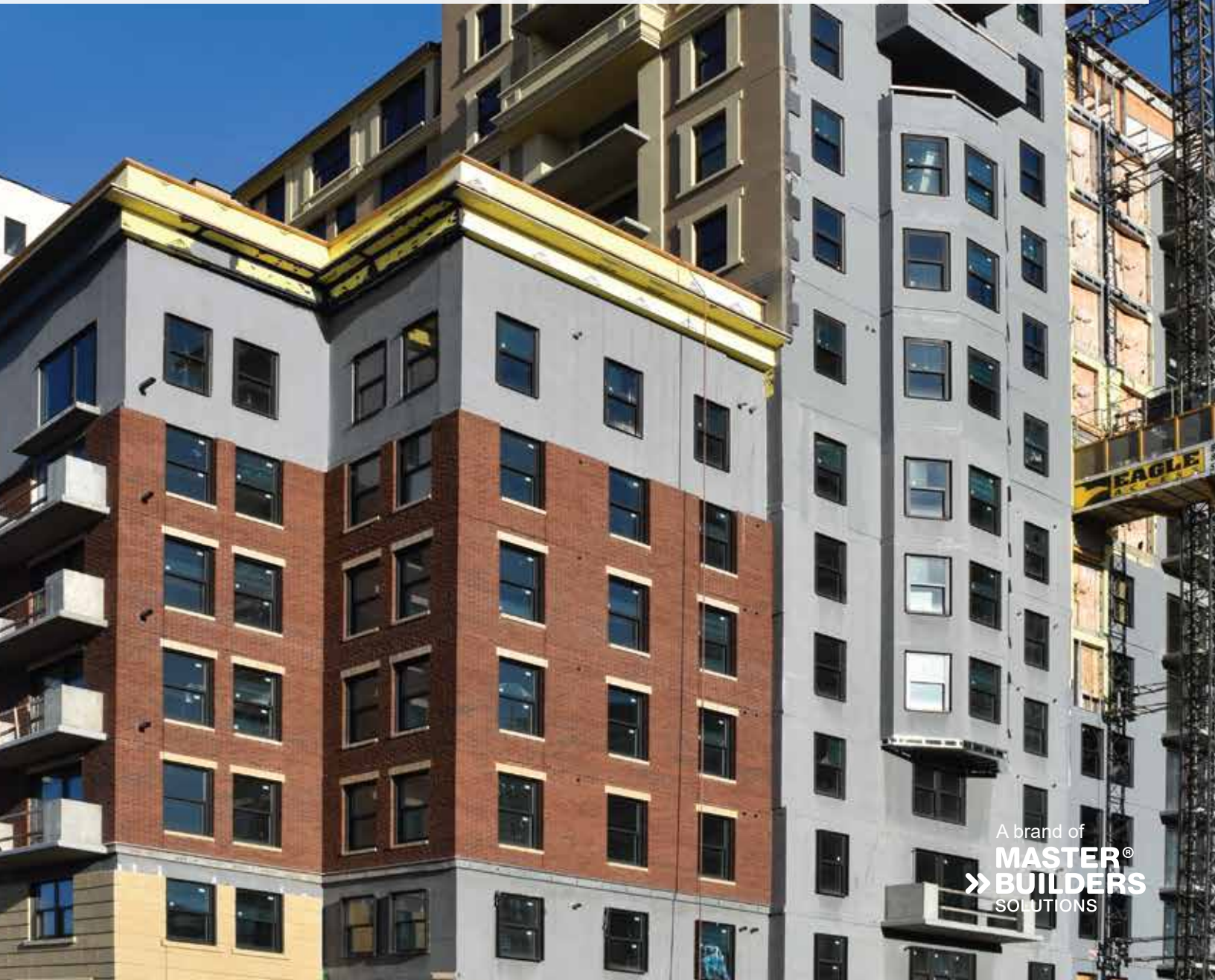


# Air/Water-Resistive Barriers Selection Guide



**Finestop RA, Finestop RS and Finestop VB:** are a one component fluid-applied air/water-resistive barriers. Waterproof and resilient, may be spray, roller, trowel or brush-applied directly to approved wall substrates. Provides excellent secondary moisture protection behind most wall claddings including EIFS, stucco (slip sheet required), brick, siding, and metal panels.

Barrier	Finestop RA	Finestop RS	Finestop VB
Air barrier	●	●	●
Vapor Retarder (Class 1)			●
Roller Applied	●	●	●
Spray / Airless		●	
Spray / Air Assisted	●	●	●
Brush	●	●	●
Trowel	●		
180 Exposure	●	●	●

\*\* 30 days if used as part of an adhesively attached wall system such as EIFS

**Acceptable Substrates** PermaBase<sup>®</sup> Cement Board and other cement-boards conforming with ASTM C1325 (Type A-exterior); poured concrete/unit masonry; ASTM C1177 type sheathings, including, Weather Defense<sup>™</sup> Platinum sheathing, GreenGlass<sup>®</sup> sheathing, eXP<sup>™</sup> sheathing, GlasRoc<sup>®</sup> sheathing, Securock<sup>™</sup> glass-mat sheathing, DensGlass<sup>®</sup> exterior sheathing DensElement (sheathing only); gypsum sheathing (ASTM C79/C1396); Huber Zip (sheathing only) Exposure I or exterior plywood (Grade C/D or better); or Exposure I OSB, Fire Treated wood sheathing; Pyro-Guard<sup>®</sup> and Dricon<sup>®</sup> plywood and FlmaBlock<sup>®</sup> OSB.

Sheathing	Finestop RA	Finestop RS	Finestop VB
ASTM C1177	450	525	290
Cement Board	500	575	290
Plywood	265	295	265
OSB	265	295	265
Concrete Masonry (CMU)	125-265	125-265	80-150
Poured Concrete	500	575	290

Roll or spray / backroll for optimum coverage rate. Other application methods may provide less coverage. Actual results may vary depending on surface porosity, roughness, moisture uptakes, type of OSB or other factors.

## Finestone Accessories

**Sheathing Fabric:** a reinforced non-woven polyester fabric designed for use with Finestop RA, Finestop RS or Finestop VB air/water-resistive barriers and tested in accordance with ICC-ES acceptance criteria AC212 for water-resistive barrier coatings, AC 148 for flexible flashing and ASTM E2357 for air barrier assemblies.

**MasterSeal AWB 970 NP:** a 20-mil thick, self-adhering and sealing composite membrane of polyester fabric and butyl adhesive. Used as an air barrier accessory to connect different air barrier materials or assemblies together to make the air barrier continuous and as an expansion joint seal.

**MaxFlash:** a one-component gun grade elastomeric material for use as a flexible waterproofing flashing membrane for rough openings. It can also be used to prepare sheathing joints for subsequent application of Master Builders Solutions air/water-resistive barrier membranes.

Accessories	Sheathing Fabric	MaxFlash	MasterSeal AWB 970NP
Sheathing Joints up to ¼"	●	●	●
Sheathing Joints up to ½"		●	●
Expansion Joints			●
Transitional Membrane			●
Rough opening treatment	●	●	●

**Master Builders Solutions**  
**Constructions Systems US, LLC**  
889 Valley Park Drive  
Shakopee, MN 55379 USA

**Customer Service** (800) 433-9517  
**Technical Service** (800) 589-1336  
[finestone.master-builders-solutions.com/en](http://finestone.master-builders-solutions.com/en)



© registered trademark of a Group member  
in many countries of the world

© 2022 MBCC Group, rev 07/22

**LIMITED WARRANTY NOTICE:** Master Builders Solutions Construction Systems US, LLC ("Master Builders") warrants this product to be free from manufacturing defects and to meet the technical properties on the current Technical Data Guide, if used as directed within shelf life. Satisfactory results depend not only on quality products but also upon many factors beyond our control. Master Builders MAKES NO OTHER WARRANTY OR GUARANTEE, EXPRESS OR IMPLIED, INCLUDING WARRANTIES OF MERCHANTABILITY OR FITNESS FOR A PARTICULAR PURPOSE WITH RESPECT TO ITS PRODUCTS. The sole and exclusive remedy of Purchaser for any claim concerning this product, including but not limited to, claims alleging breach of warranty, negligence, strict liability or otherwise, is shipment to purchaser of product equal to the amount of product that fails to meet this warranty or refund of the original purchase price of product that fails to meet this warranty, at the sole option of Master Builders. Any claims concerning this product must be received in writing within one (1) year from the date of shipment and any claims not presented within that period are waived by Purchaser. Master Builders WILL NOT BE RESPONSIBLE FOR ANY SPECIAL, INCIDENTAL, CONSEQUENTIAL (INCLUDING LOST PROFITS) OR PUNITIVE DAMAGES OF ANY KIND.

Purchaser must determine the suitability of the products for the intended use and assumes all risks and liabilities in connection therewith. This information and all further technical advice are based on Master Builders present knowledge and experience. However, Master Builders assumes no liability for providing such information and advice including the extent to which such information and advice may relate to existing third party intellectual property rights, especially patent rights, nor shall any legal relationship be created by or arise from the provision of such information and advice. Master Builders reserves the right to make any changes according to technological progress or further developments. The Purchaser of the Product(s) must test the product(s) for suitability for the intended application and purpose before proceeding with a full application of the product(s). Performance of the product described herein should be verified by testing and carried out by qualified experts.