

BASF

We create chemistry

FINESTONE®

Finescreen 1000 with MaxGrip Veneer Mortar

Cement Board System
with Adhered Veneer
Typical Details



Finescreen 1000 with MaxGrip Veneer Mortar

Typical Details

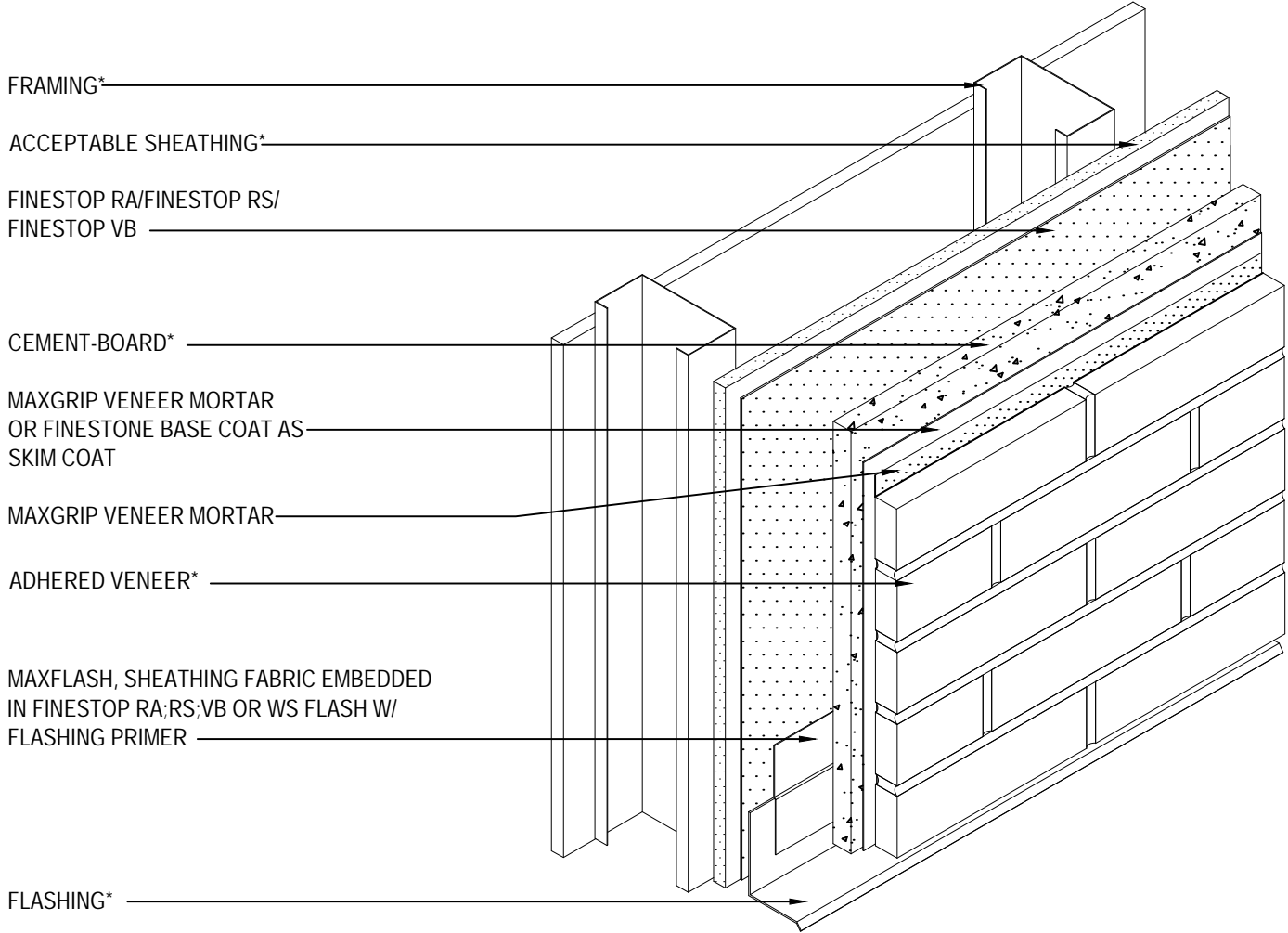
Cement Board System with Adhered Veneer

Table of Contents

- 1 Isometric View
- 2 Typical Termination at Foundation
- 3 Typical EIFS Abutment to Adhered Veneer
- 4 Typical Outside Corner Application
- 5 Typical Inside Corner
- 6 Typical Window Jamb (Flush)
- 7 Typical Window Head (Flush)
- 8 Typical Window Sill Detail (Flush)
- 9 Typical Roof Edge Flashing Detail
- 10 Typical Column Base Termination
- 11 Typical Light Fixture
- 12 Typical Pipe Penetration Typical
- 13 Typical Termination at Dissimilar Material
(Plan View)

Notes:

- **Unsatisfactory conditions shall be reported to the General Contractor and corrected before the application of BASF products.**
- **Install BASF materials in accordance with current installation instructions.**
- **The details within represent BASF Corporation - Wall Systems (hereinafter BASF Wall Systems) latest recommendations. They are presented in good faith by BASF Wall Systems. The details are subject to change without notice. BASF Wall Systems accepts no liability for the end use of the details. For conditions not shown, consult BASF Wall Systems for review of specific detail.**



*BY OTHERS

NOTE: Cement board joints are treated with Finestone reinforcing mesh and base coat prior to skim coat application per Finescreen 1000 with MaxGrip Veneer Mortar instructions

TYPICAL ISOMETRIC VIEW

FINESTONE FINESCREEN 1000 WITH MAXGRIP VENEER MORTAR

SCALE: NTS

01

Structure, substrates, flashing, sealants, and other items which are not part of the BASF FINESTONE *FINESCREEN 1000 with MaxGrip Veneer Mortar* are the responsibility of others. This detail is subject to change without notice. BASF Corporation - Wall Systems (herein after BASF Wall Systems) accepts no liability for the end use of this detail. For conditions not shown, consult BASF Wall Systems for review of specific detail.



FRAMING*

ACCEPTABLE SHEATHING*

FINESTOP RA/FINESTOP RS/
FINESTOP VB

MAXFLASH, SHEATHING FABRIC
EMBEDDED IN FINESTOP RA; RS; VB OR
WS FLASH W/ FLASHING PRIMER

CEMENT-BOARD*

ADHERED VENEER*

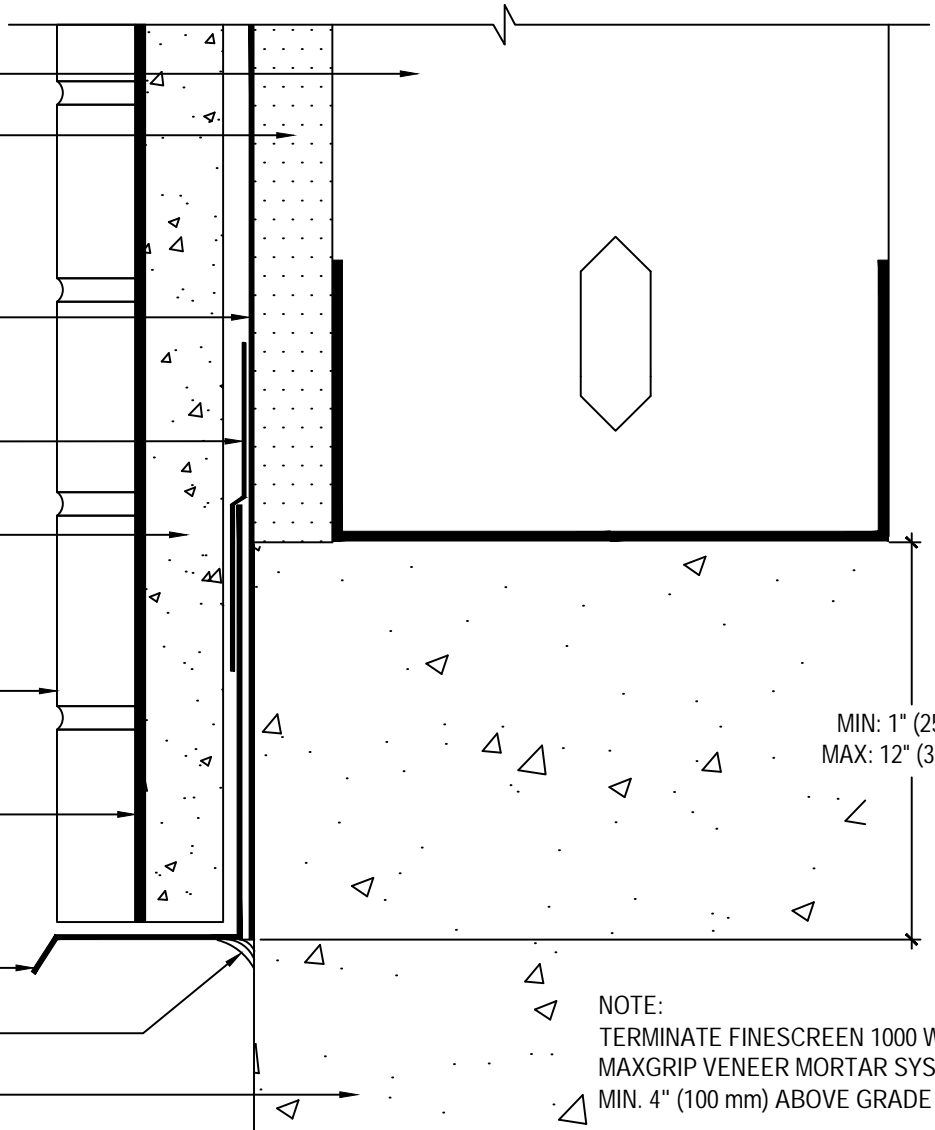
MAXGRIP VENEER MORTAR
(OVER SKIM COAT OF MAXGRIP VENEER
MORTAR OR FINESTONE BASE COAT)

FLASHING*

SEALANT*

FOUNDATION*

*BY OTHERS



MIN: 1" (25mm)
MAX: 12" (305mm)

NOTE:
TERMINATE FINESCREEN 1000 WITH
MAXGRIP VENEER MORTAR SYSTEM
MIN. 4" (100 mm) ABOVE GRADE

TYPICAL TERMINATION AT FOUNDATION

FINESTONE FINESCREEN 1000 WITH MAXGRIP VENEER MORTAR

SCALE: NTS

02

Structure, substrates, flashing, sealants, and other items which are not part of the BASF FINESTONE *FINESCREEN 1000 with MaxGrip Veneer Mortar* are the responsibility of others. This detail is subject to change without notice. BASF Corporation - Wall Systems (herein after BASF Wall Systems) accepts no liability for the end use of this detail. For conditions not shown, consult BASF Wall Systems for review of specific detail.

BASF
We create chemistry

FRAMING*

ACCEPTABLE SHEATHING*

FINESTONE LAMINA:
FINESTONE BASE COAT
FINESTONE REINFORCING MESH
FINESTONE FINISH COAT

FINESTOP RA/FINESTOP RS/
FINESTOP VB

APPROVED EPS INSULATION BOARD

WRAP FINESTONE BASE COAT AND
FINESTONE REINFORCING MESH

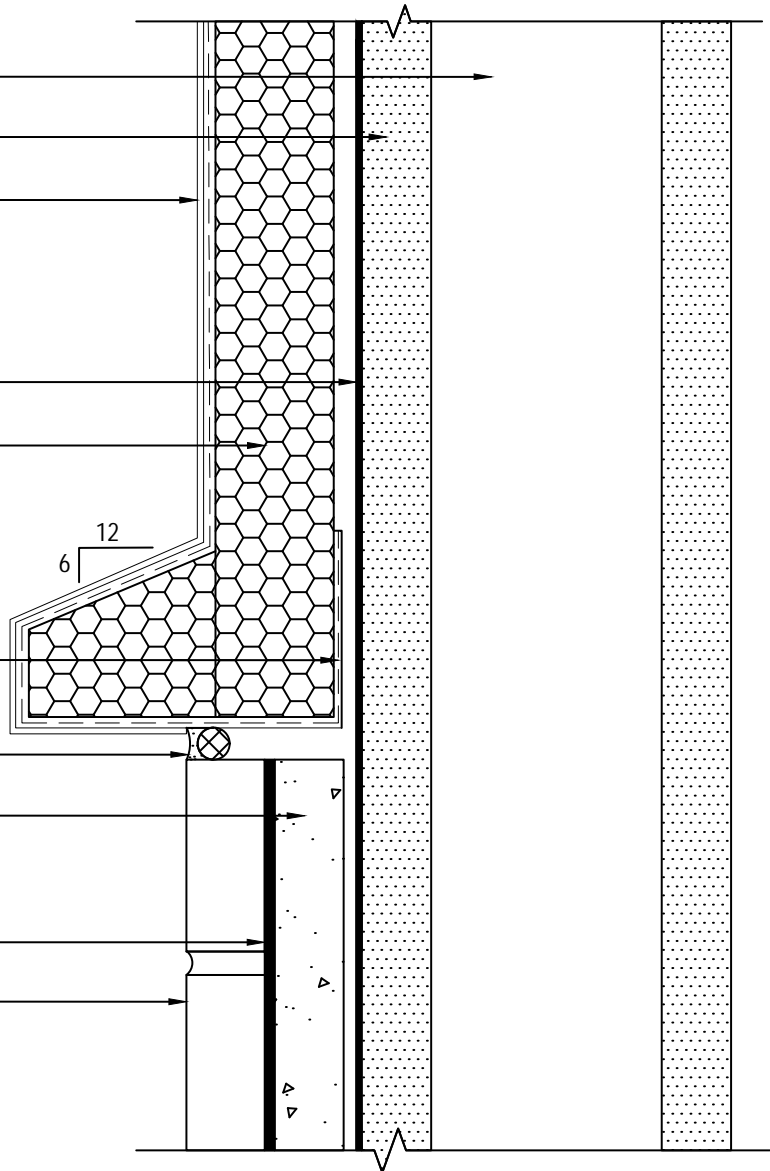
BACKER ROD & SEALANT*

CEMENT-BOARD*

MAXGRIP VENEER MORTAR
(OVER SKIM COAT OF MAXGRIP VENEER
MORTAR OR FINESTONE BASE COAT)

ADHERED VENEER*

*BY OTHERS



TYPICAL EIFS ABUTMENT TO ADHERED VENEER

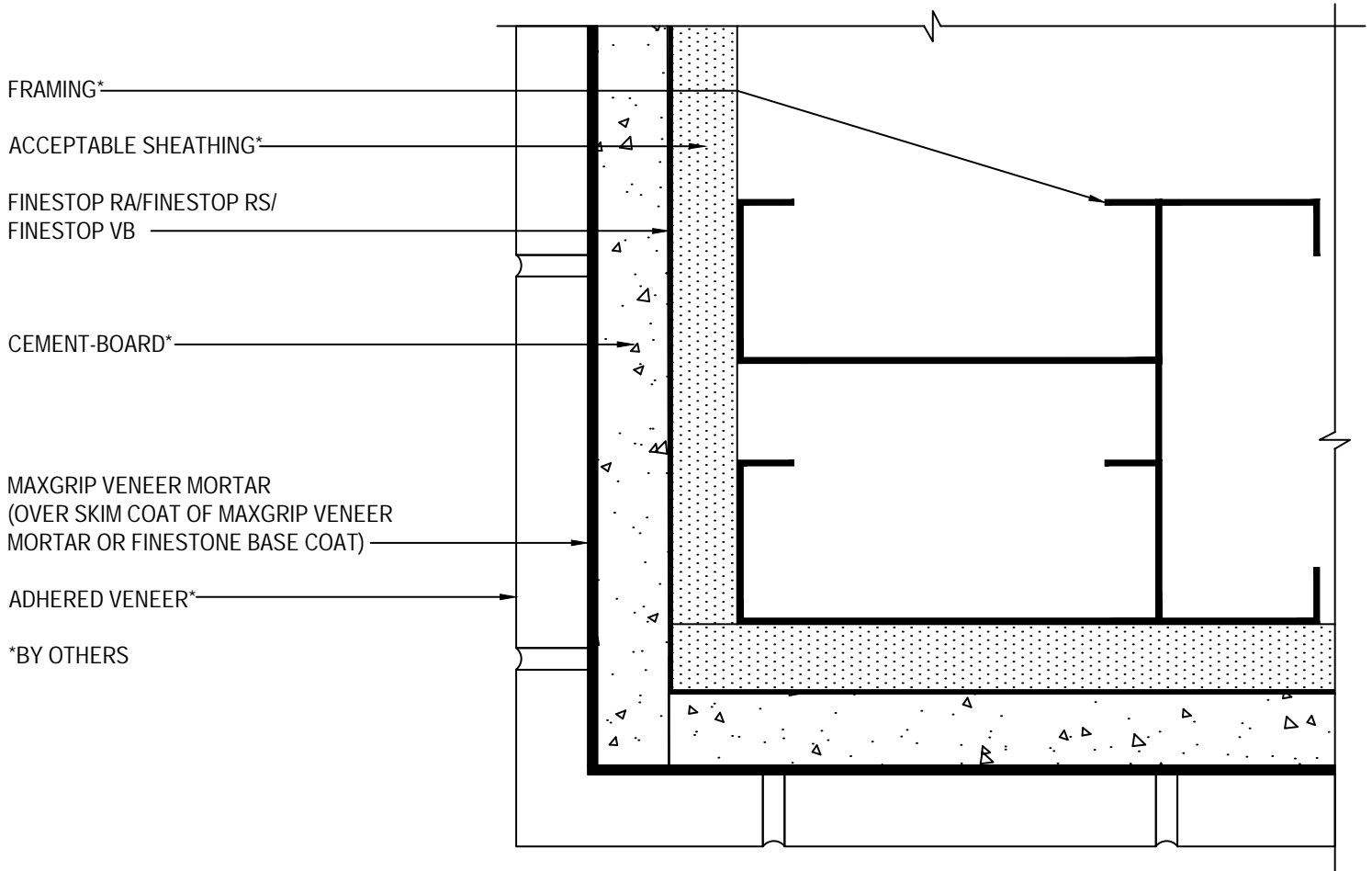
FINESTONE FINESCREEN 1000 WITH MAXGRIP VENEER MORTAR

SCALE: NTS

03

Structure, substrates, flashing, sealants, and other items which are not part of the BASF FINESTONE *FINESCREEN 1000 with MaxGrip Veneer Mortar* are the responsibility of others. This detail is subject to change without notice. BASF Corporation - Wall Systems (herein after BASF Wall Systems) accepts no liability for the end use of this detail. For conditions not shown, consult BASF Wall Systems for review of specific detail.

BASF
We create chemistry



TYPICAL OUTSIDE CORNER APPLICATION

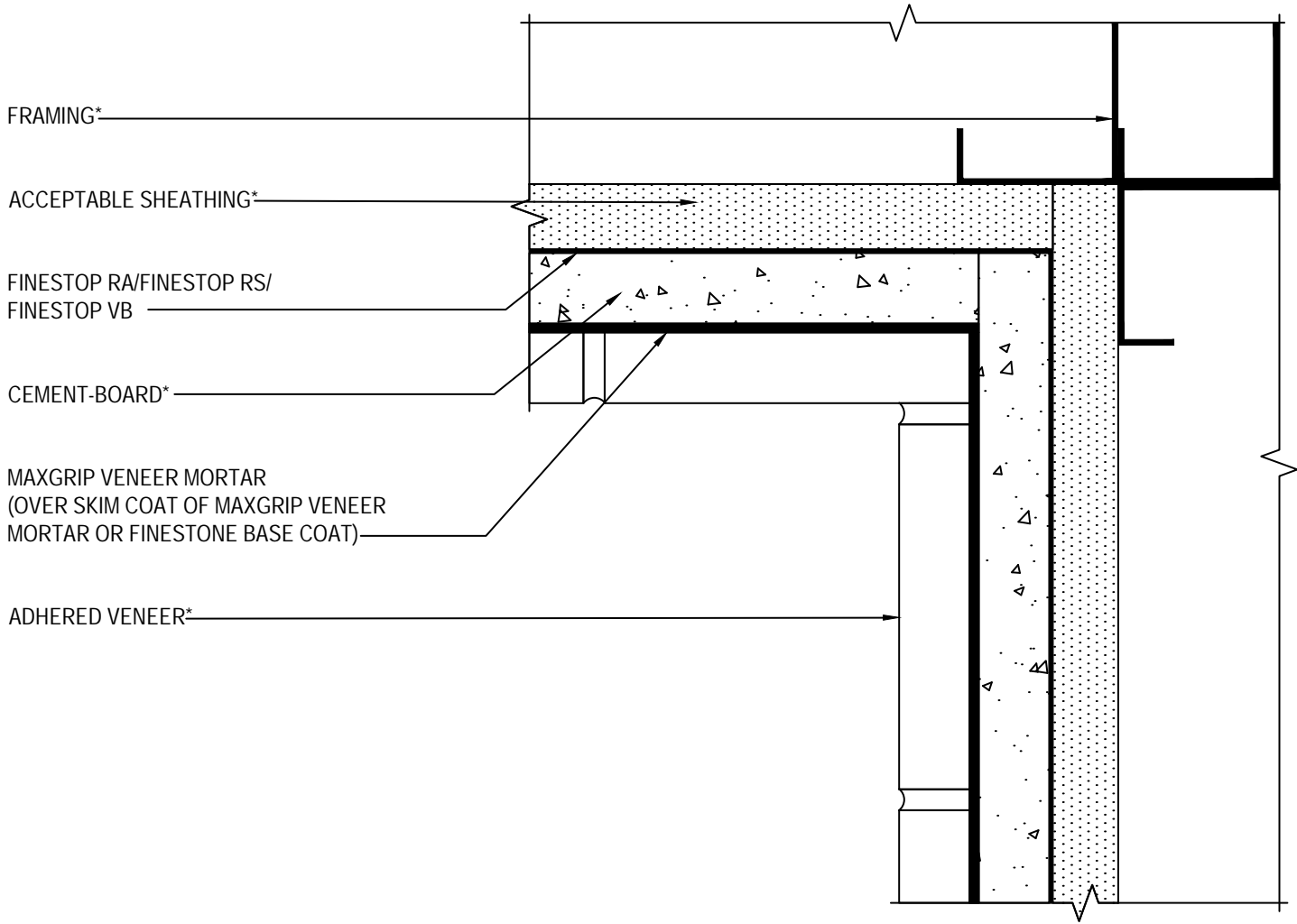
FINESTONE FINESCREEN 1000 WITH MAXGRIP VENEER MORTAR

SCALE: NTS

04

Structure, substrates, flashing, sealants, and other items which are not part of the BASF FINESTONE *FINESCREEN 1000 with MaxGrip Veneer Mortar* are the responsibility of others. This detail is subject to change without notice. BASF Corporation - Wall Systems (herein after BASF Wall Systems) accepts no liability for the end use of this detail. For conditions not shown, consult BASF Wall Systems for review of specific detail.

■ BASF
We create chemistry



FRAMING*

ACCEPTABLE SHEATHING*

FINESTOP RA/FINESTOP RS/
FINESTOP VB

CEMENT-BOARD*

MAXGRIP VENEER MORTAR
(OVER SKIM COAT OF MAXGRIP VENEER
MORTAR OR FINESTONE BASE COAT)

ADHERED VENEER*

*BY OTHERS

TYPICAL INSIDE CORNER

FINESTONE FINESCREEN 1000 WITH MAXGRIP VENEER MORTAR

SCALE: NTS

05

Structure, substrates, flashing, sealants, and other items which are not part of the BASF FINESTONE *FINESCREEN 1000 with MaxGrip Veneer Mortar* are the responsibility of others. This detail is subject to change without notice. BASF Corporation - Wall Systems (herein after BASF Wall Systems) accepts no liability for the end use of this detail. For conditions not shown, consult BASF Wall Systems for review of specific detail.



ACCEPTABLE SHEATHING*

FRAMING*

FINESTOP RA/FINESTOP RS/
FINESTOP VB

MAXGRIP VENEER MORTAR
(OVER SKIM COAT OF MAXGRIP VENEER
MORTAR OR FINESTONE BASE COAT)

ADHERED VENEER*

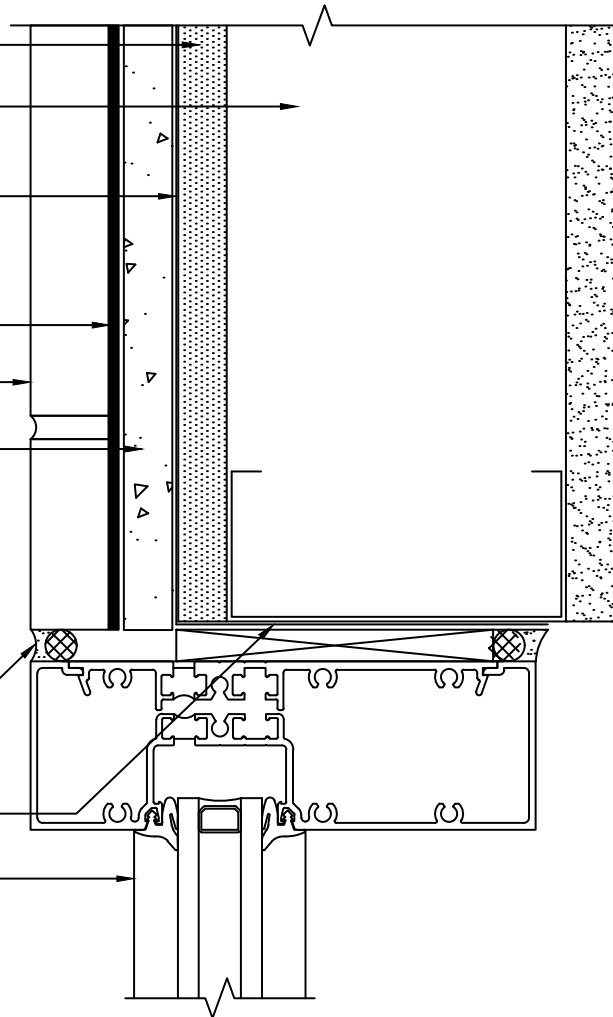
CEMENT-BOARD*

BACKER ROD AND SEALANT
(WIDTH PER DESIGN)*

BASF MAXFLASH OR BASF SHEATHING FABRIC
EMBEDDED IN FINESTOP RA; RS; VB OR BASF
WS FLASH W/ FLASHING PRIMER

WINDOW*

*BY OTHERS



TYPICAL WINDOW JAMB (FLUSH)

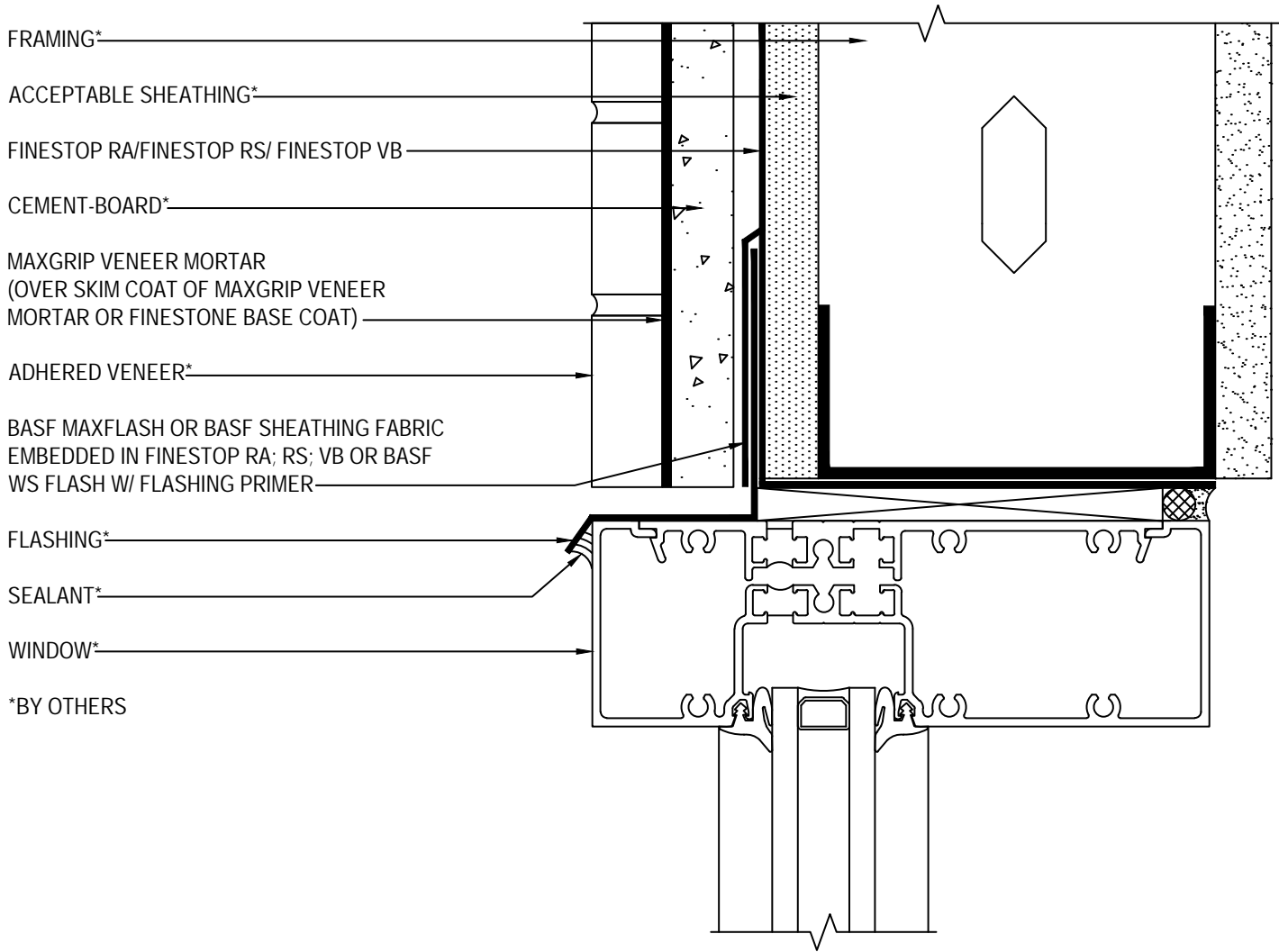
FINESTONE FINESCREEN 1000 WITH MAXGRIP VENEER MORTAR

SCALE: NTS

06

Structure, substrates, flashing, sealants, and other items which are not part of the BASF FINESTONE *FINESCREEN 1000 with MaxGrip Veneer Mortar* are the responsibility of others. This detail is subject to change without notice. BASF Corporation - Wall Systems (herein after BASF Wall Systems) accepts no liability for the end use of this detail. For conditions not shown, consult BASF Wall Systems for review of specific detail.

BASF
We create chemistry



NOTE: WRAP MAXFLASH, SHEATHING FABRIC EMBEDDED IN FINESTOP RA; RS; VB OR WS FLASH W/ FLASHING PRIMER INTO ROUGH OPENING ON HEAD IF ALSO INTENDED TO BE AN AIR BARRIER.

TYPICAL WINDOW HEAD (FLUSH)

FINESTONE FINESCREEN 1000 WITH MAXGRIP VENEER MORTAR

SCALE: NTS

07

Structure, substrates, flashing, sealants, and other items which are not part of the BASF FINESTONE *FINESCREEN 1000 with MaxGrip Veneer Mortar* are the responsibility of others. This detail is subject to change without notice. BASF Corporation - Wall Systems (herein after BASF Wall Systems) accepts no liability for the end use of this detail. For conditions not shown, consult BASF Wall Systems for review of specific detail.

BASF
We create chemistry

BASF MAXFLASH OR BASF SHEATHING FABRIC
EMBEDDED IN FINESTOP RA; RS; VB OR BASF
WS FLASH W/ FLASHING PRIMER

WINDOW*

BACKER ROD AND SEALANT
(WIDTH PER DESIGN)*

FINESTOP RA/FINESTOP RS/
FINESTOP VB

ACCEPTABLE SHEATHING*

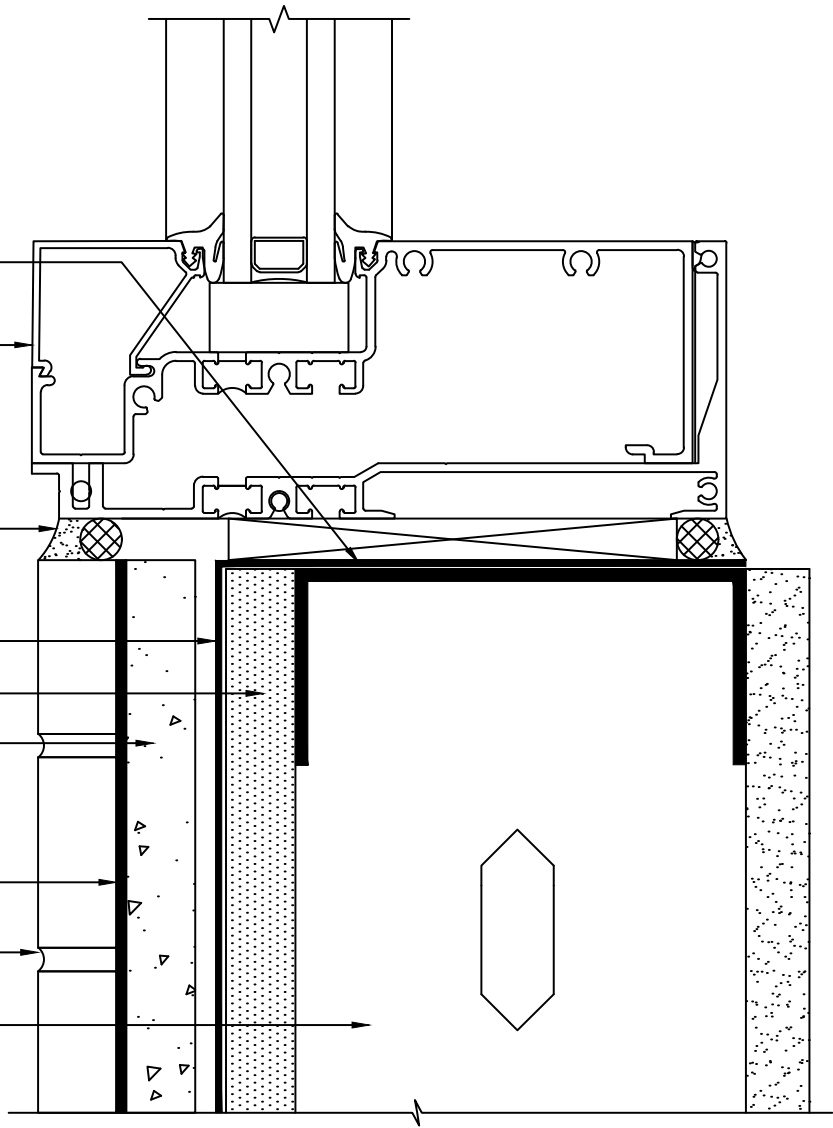
CEMENT-BOARD*

MAXGRIP VENEER MORTAR
(OVER SKIM COAT OF MAXGRIP VENEER
MORTAR OR FINESTONE BASE COAT)

ADHERED VENEER*

FRAMING*

*BY OTHERS



TYPICAL WINDOW SILL DETAIL (FLUSH)

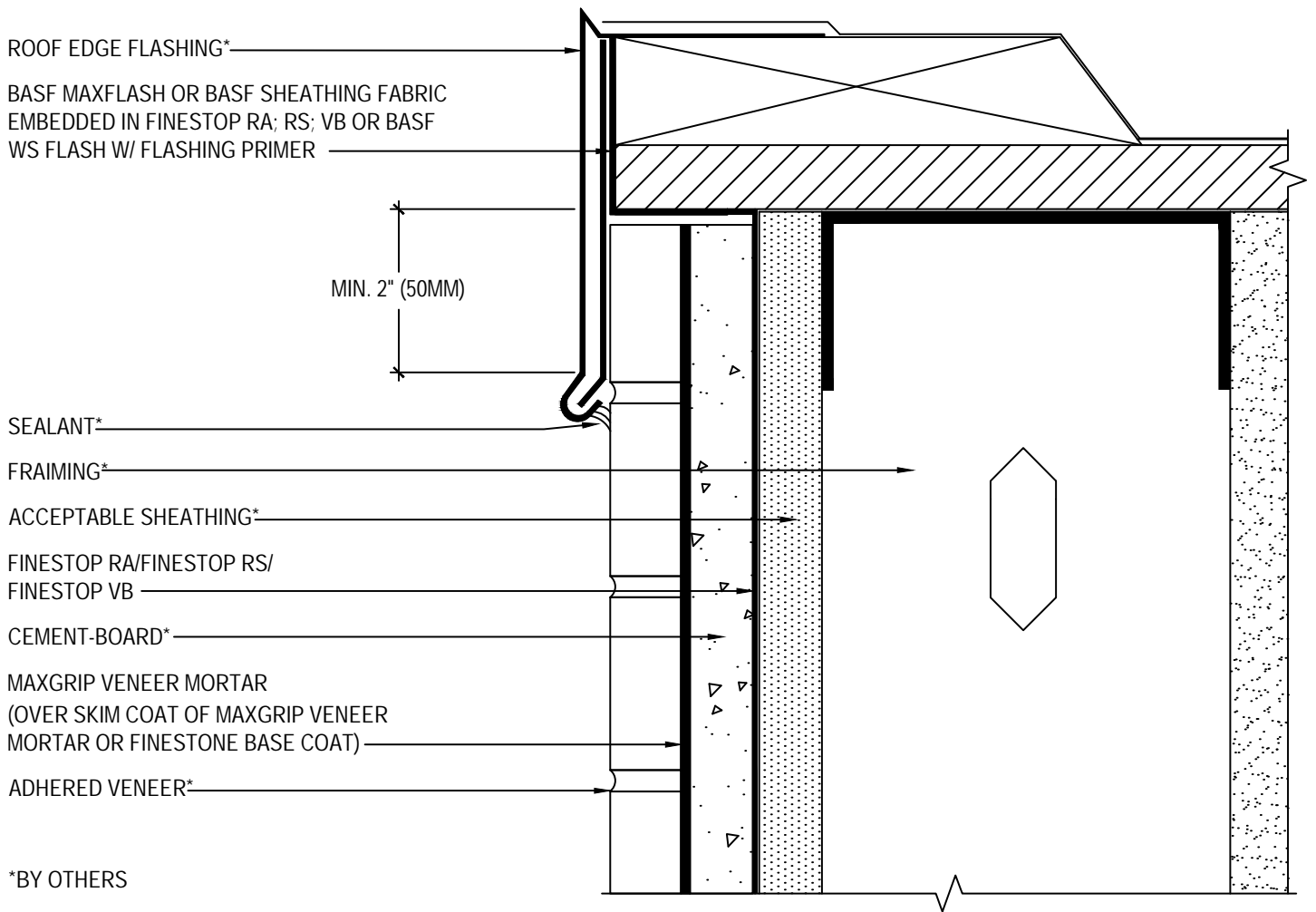
FINESTONE FINESCREEN 1000 WITH MAXGRIP VENEER MORTAR

SCALE: NTS

08

Structure, substrates, flashing, sealants, and other items which are not part of the BASF FINESTONE *FINESCREEN 1000 with MaxGrip Veneer Mortar* are the responsibility of others. This detail is subject to change without notice. BASF Corporation - Wall Systems (herein after BASF Wall Systems) accepts no liability for the end use of this detail. For conditions not shown, consult BASF Wall Systems for review of specific detail.

BASF
We create chemistry



TYPICAL ROOF EDGE FLASHING DETAIL

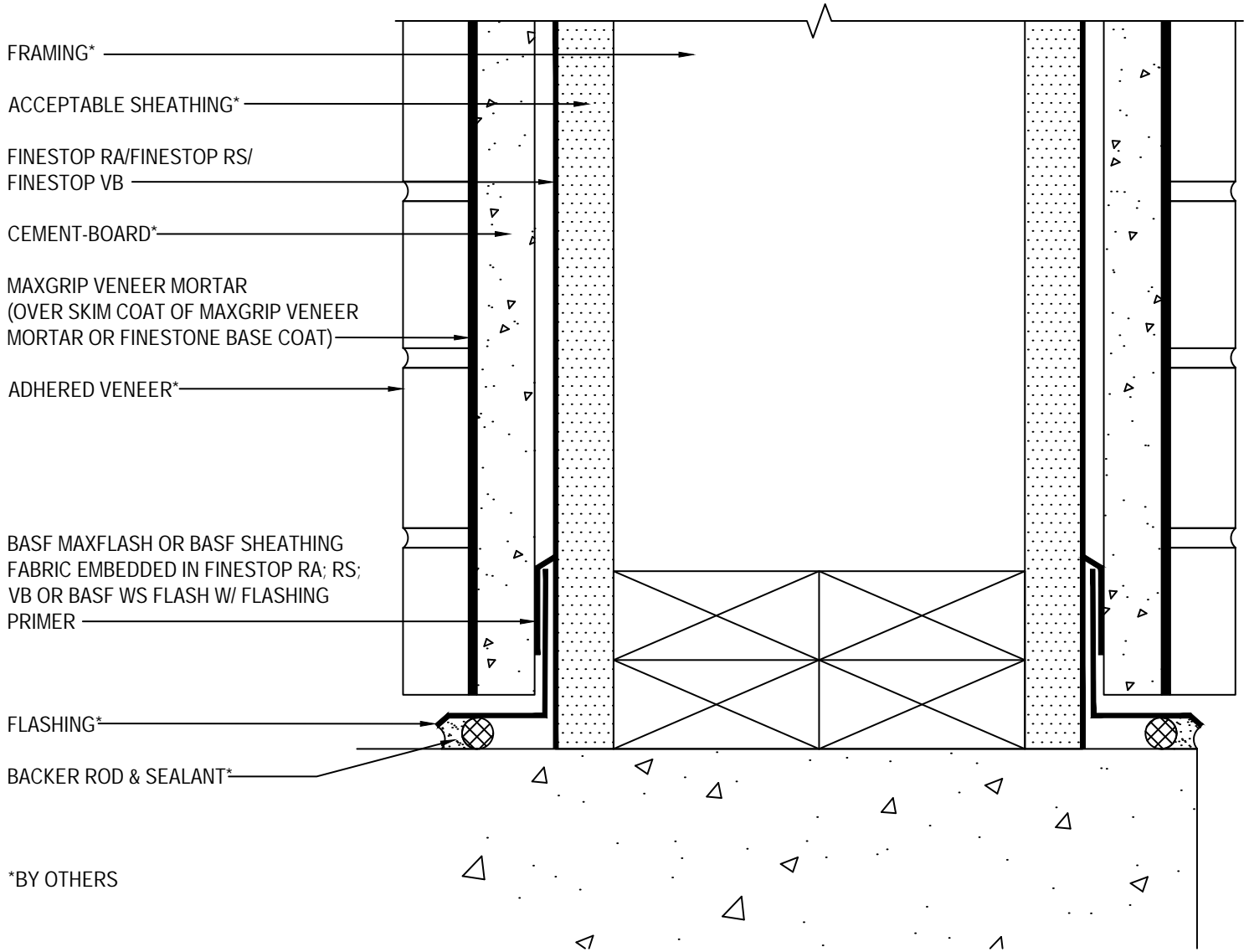
FINESTONE FINESCREEN 1000 WITH MAXGRIP VENEER MORTAR

SCALE: NTS

09

Structure, substrates, flashing, sealants, and other items which are not part of the BASF FINESTONE *FINESCREEN 1000 with MaxGrip Veneer Mortar* are the responsibility of others. This detail is subject to change without notice. BASF Corporation - Wall Systems (herein after BASF Wall Systems) accepts no liability for the end use of this detail. For conditions not shown, consult BASF Wall Systems for review of specific detail.

BASF
We create chemistry



TYPICAL COLUMN BASE TERMINATION

FINESTONE FINESCREEN 1000 WITH MAXGRIP VENEER MORTAR

SCALE: NTS

10

Structure, substrates, flashing, sealants, and other items which are not part of the BASF FINESTONE *FINESCREEN 1000 with MaxGrip Veneer Mortar* are the responsibility of others. This detail is subject to change without notice. BASF Corporation - Wall Systems (herein after BASF Wall Systems) accepts no liability for the end use of this detail. For conditions not shown, consult BASF Wall Systems for review of specific detail.

BASF
We create chemistry

FINESTOP RA/FINESTOP RS/
FINESTOP VB

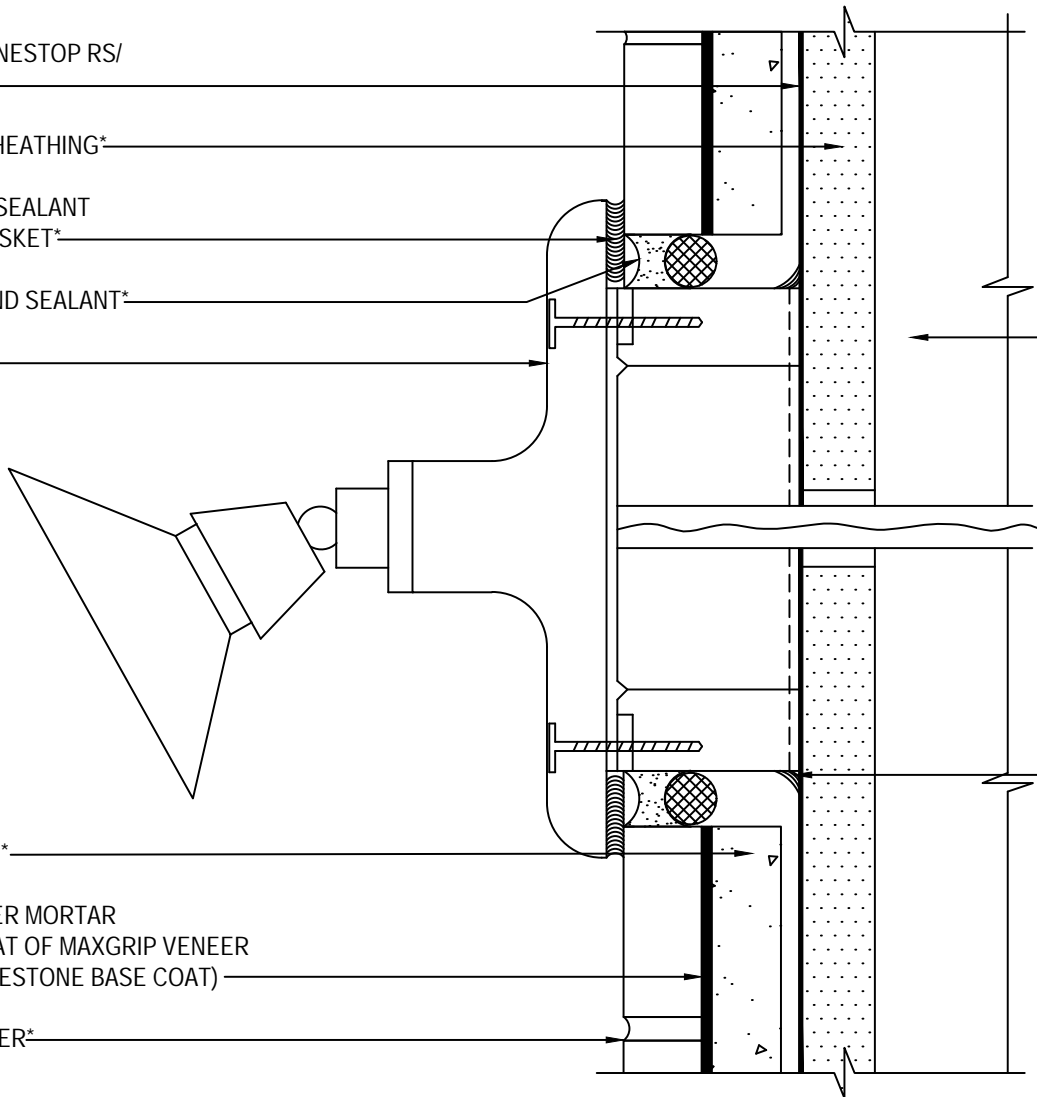
ACCEPTABLE SHEATHING*

SET FLANGE IN SEALANT
OR PROVIDE GASKET*

BACKER ROD AND SEALANT*

LIGHT FIXTURE*

FRAMING*



CEMENT-BOARD*

MAXGRIP VENEER MORTAR
(OVER SKIM COAT OF MAXGRIP VENEER
MORTAR OR FINESTONE BASE COAT)

ADHERED VENEER*
*BY OTHERS

MAXFLASH OR SEALANT
AT PERIMETER

TYPICAL LIGHT FIXTURE

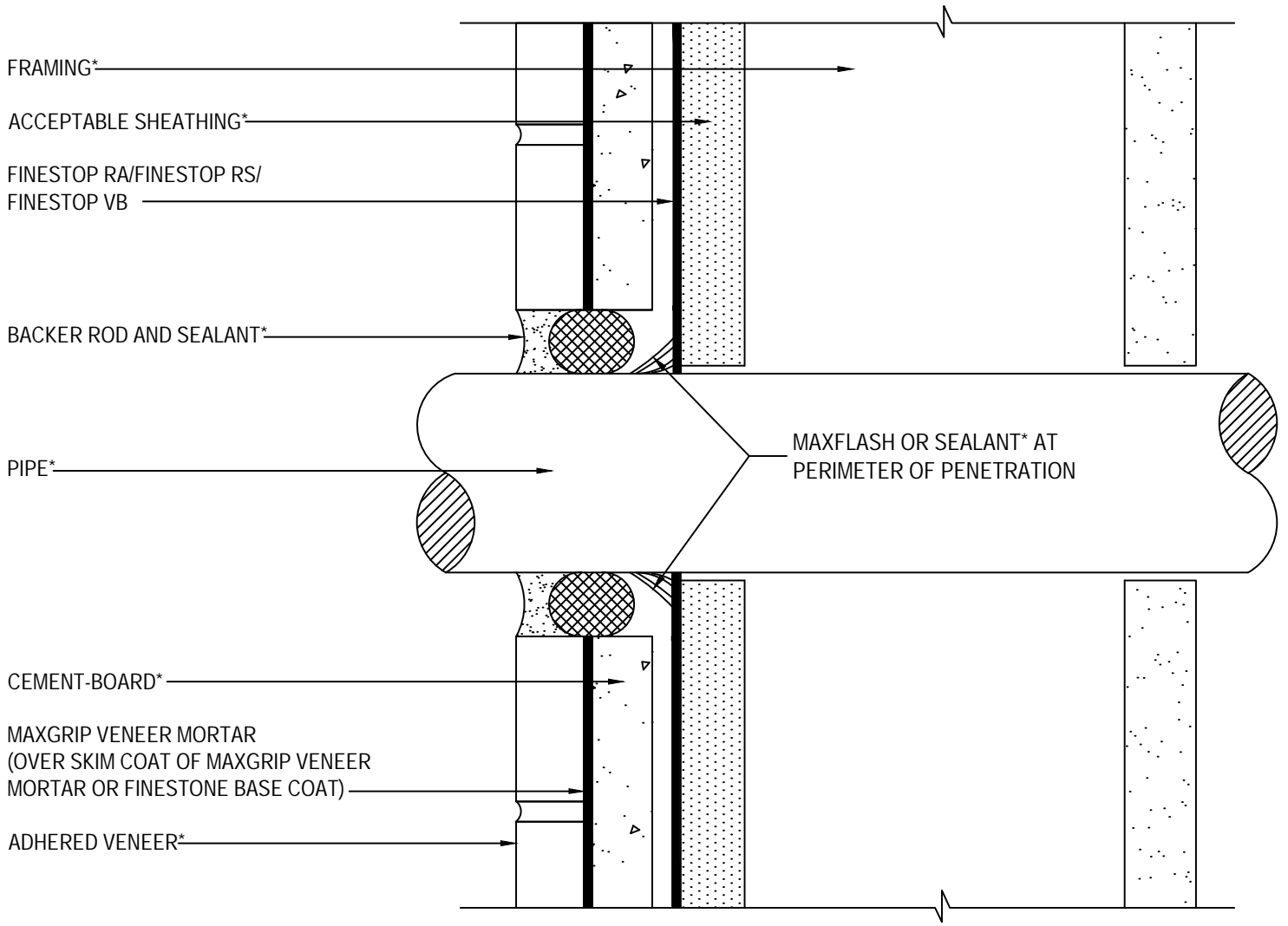
FINESTONE FINESCREEN 1000 WITH MAXGRIP VENEER MORTAR

SCALE: NTS

11

Structure, substrates, flashing, sealants, and other items which are not part of the BASF FINESTONE *FINESCREEN 1000 with MaxGrip Veneer Mortar* are the responsibility of others. This detail is subject to change without notice. BASF Corporation - Wall Systems (herein after BASF Wall Systems) accepts no liability for the end use of this detail. For conditions not shown, consult BASF Wall Systems for review of specific detail.

BASF
We create chemistry



*BY OTHERS

TYPICAL PIPE PENETRATION

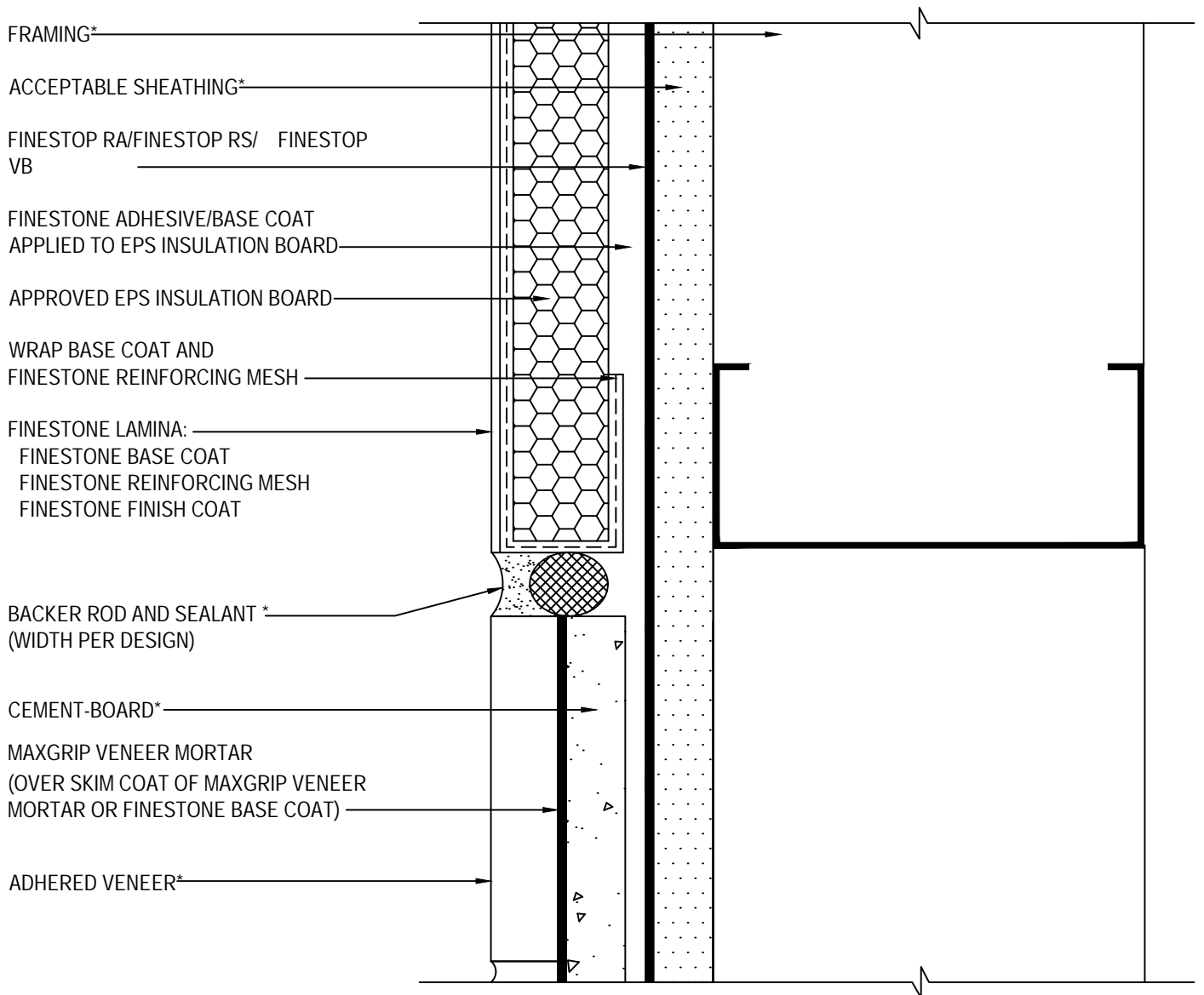
FINESTONE FINESCREEN 1000 WITH MAXGRIP VENEER MORTAR

SCALE: NTS

12

Structure, substrates, flashing, sealants, and other items which are not part of the BASF FINESTONE *FINESCREEN 1000 with MaxGrip Veneer Mortar* are the responsibility of others. This detail is subject to change without notice. BASF Corporation - Wall Systems (herein after BASF Wall Systems) accepts no liability for the end use of this detail. For conditions not shown, consult BASF Wall Systems for review of specific detail.





*BY OTHERS

TYPICAL TERMINATION AT DISSIMILAR MATERIAL (PLAN VIEW)

FINESTONE FINESCREEN 1000 WITH MAXGRIP VENEER MORTAR

SCALE: NTS

13

Structure, substrates, flashing, sealants, and other items which are not part of the BASF FINESTONE *FINESCREEN 1000 with MaxGrip Veneer Mortar* are the responsibility of others. This detail is subject to change without notice. BASF Corporation - Wall Systems (herein after BASF Wall Systems) accepts no liability for the end use of this detail. For conditions not shown, consult BASF Wall Systems for review of specific detail.

BASF
We create chemistry

BASF Corporation - Wall Systems

889 Valley Park Drive
Shakopee, MN 55379

Phone: 800.589.1336

www.finestone.basf.com

©2019 BASF Corporation

rev 11/2019