

FINESTONE STUCCO ULTRA WALL SYSTEM

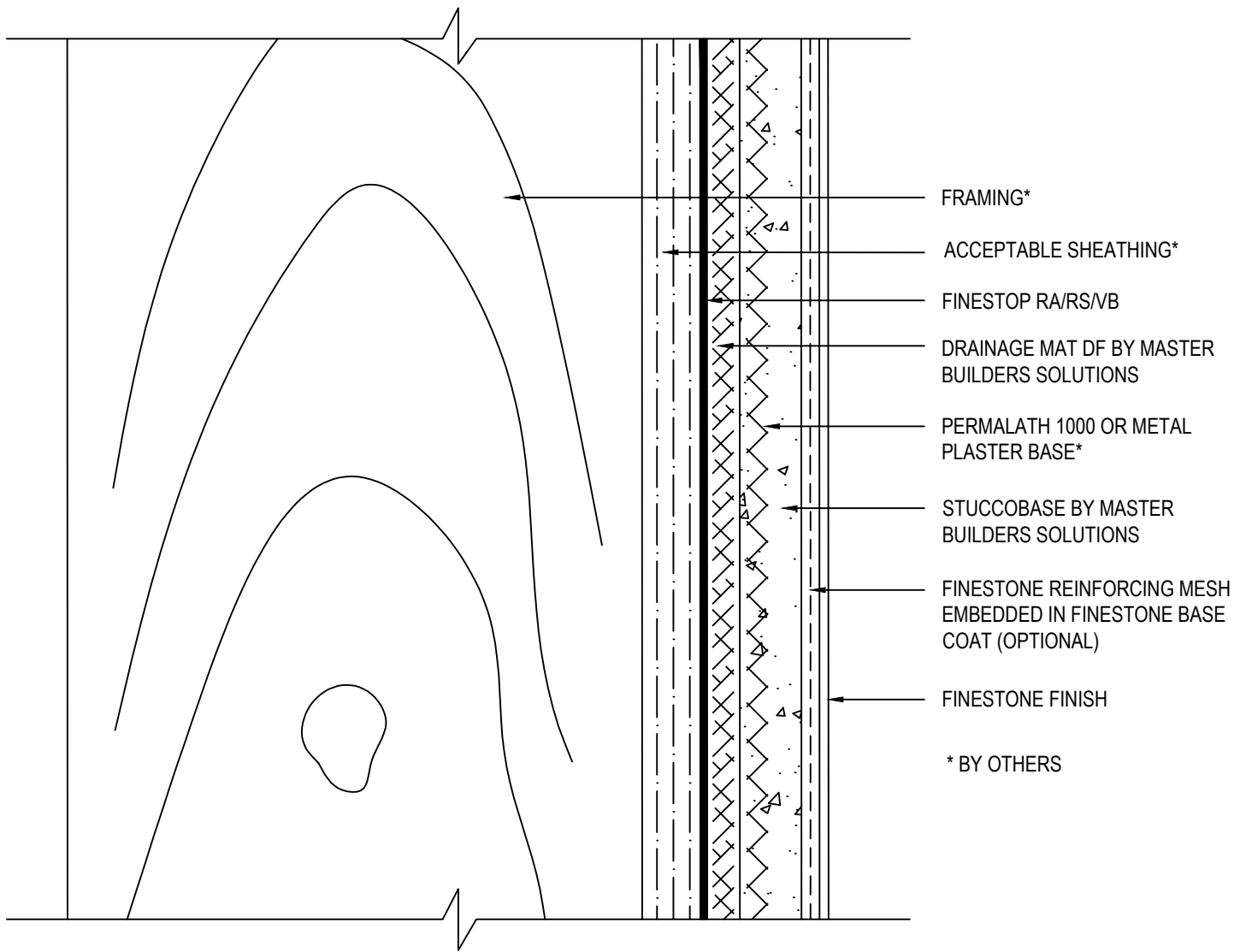
TYPICAL WALL SYSTEM WITH STEEL FRAMING

SCALE: NTS

01

Finestone is a brand of Master Builders Solutions. Structure, substrates, flashing, sealant and other items which are not part of the Finestone *Stucco Ultra System* are the responsibility of others. This detail is subject to change without notice. Master Builders Solutions accepts no liability for the end use of this detail. For conditions not shown, consult Master Builders Solutions for review of specific detail.





FINESTONE STUCCO ULTRA WALL SYSTEM

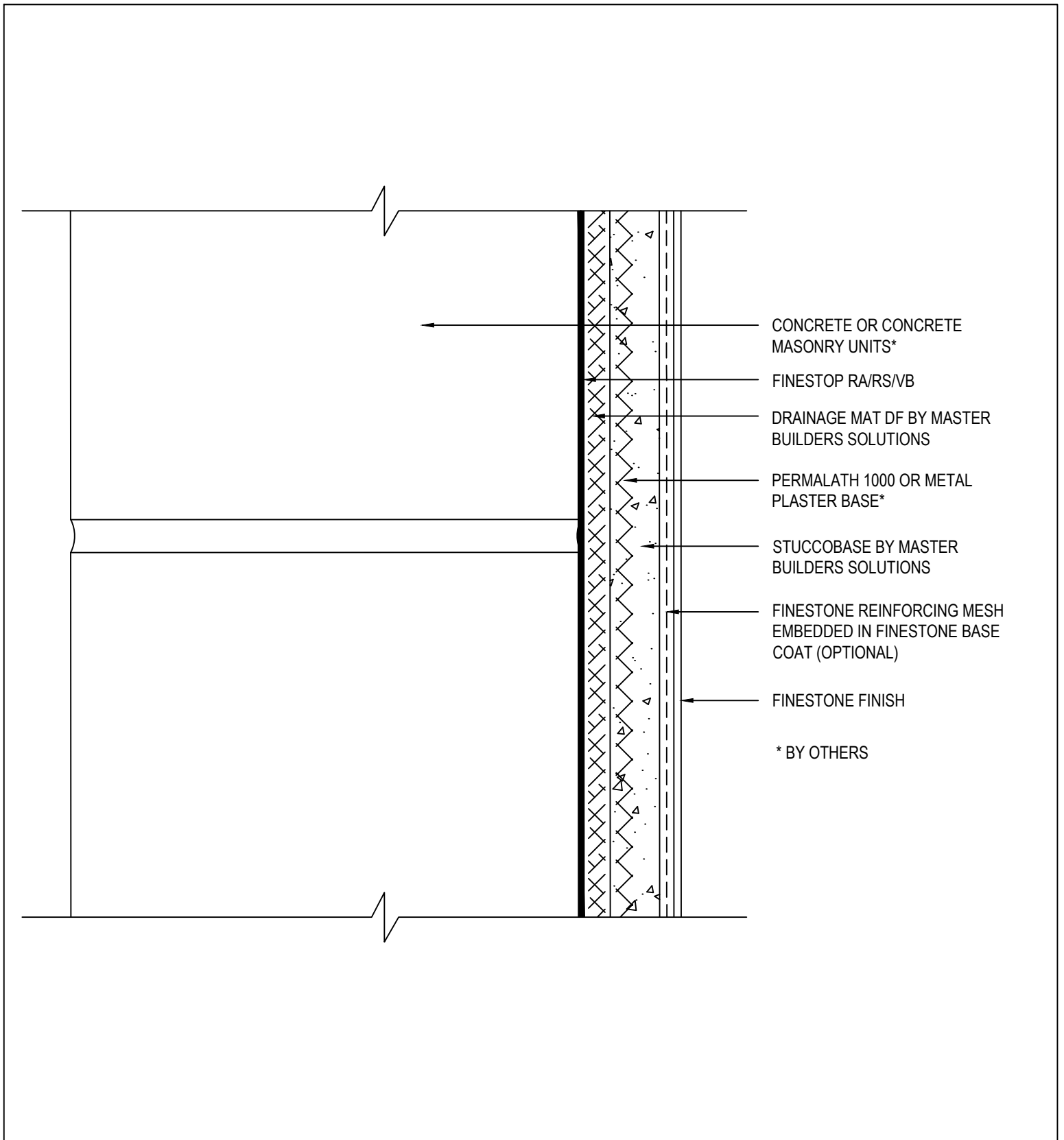
TYPICAL WALL SYSTEM WITH WOOD FRAMING

SCALE: NTS

02

Finestone is a brand of Master Builders Solutions. Structure, substrates, flashing, sealant and other items which are not part of the Finestone *Stucco Ultra System* are the responsibility of others. This detail is subject to change without notice. Master Builders Solutions accepts no liability for the end use of this detail. For conditions not shown, consult Master Builders Solutions for review of specific detail.





FINESTONE STUCCO ULTRA WALL SYSTEM

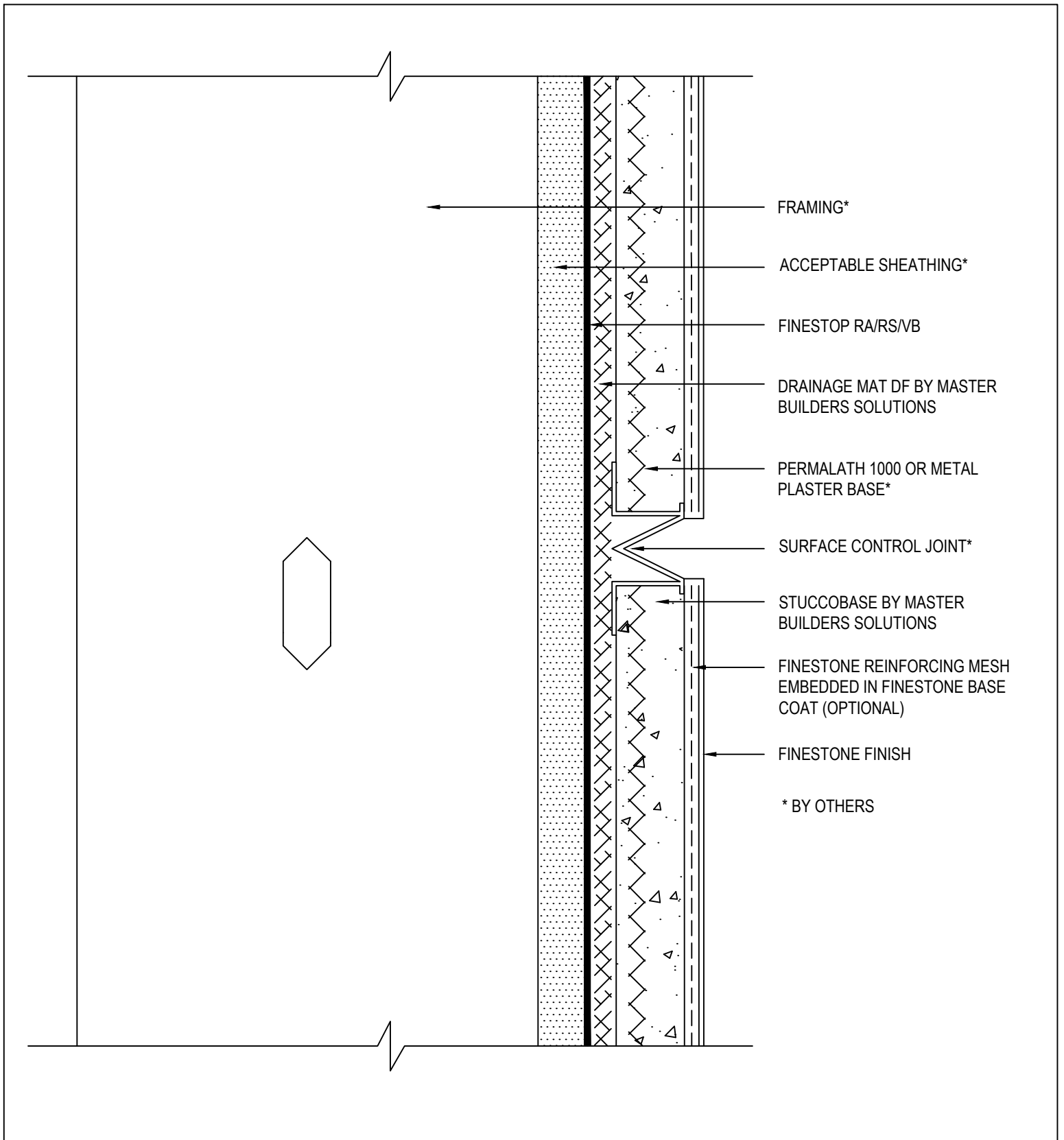
TYPICAL WALL SYSTEM WITH CONCRETE OR CMU

SCALE: NTS

03

Finestone is a brand of Master Builders Solutions. Structure, substrates, flashing, sealant and other items which are not part of the Finestone *Stucco Ultra System* are the responsibility of others. This detail is subject to change without notice. Master Builders Solutions accepts no liability for the end use of this detail. For conditions not shown, consult Master Builders Solutions for review of specific detail.





FINESTONE STUCCO ULTRA WALL SYSTEM

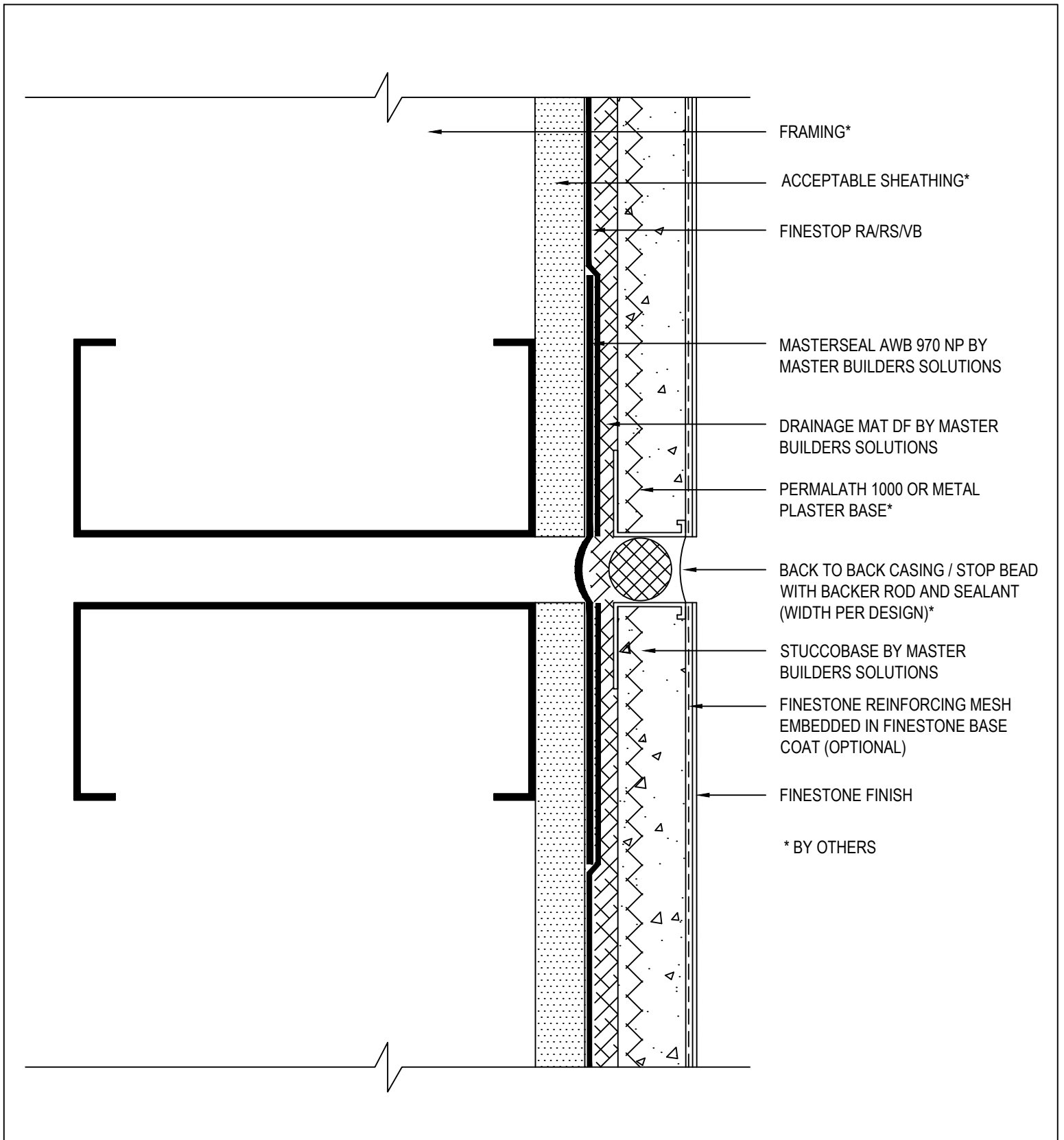
TYPICAL SURFACE CONTROL JOINT

SCALE: NTS

04

Finestone is a brand of Master Builders Solutions. Structure, substrates, flashing, sealant and other items which are not part of the Finestone *Stucco Ultra System* are the responsibility of others. This detail is subject to change without notice. Master Builders Solutions accepts no liability for the end use of this detail. For conditions not shown, consult Master Builders Solutions for review of specific detail.





FINESTONE STUCCO ULTRA WALL SYSTEM

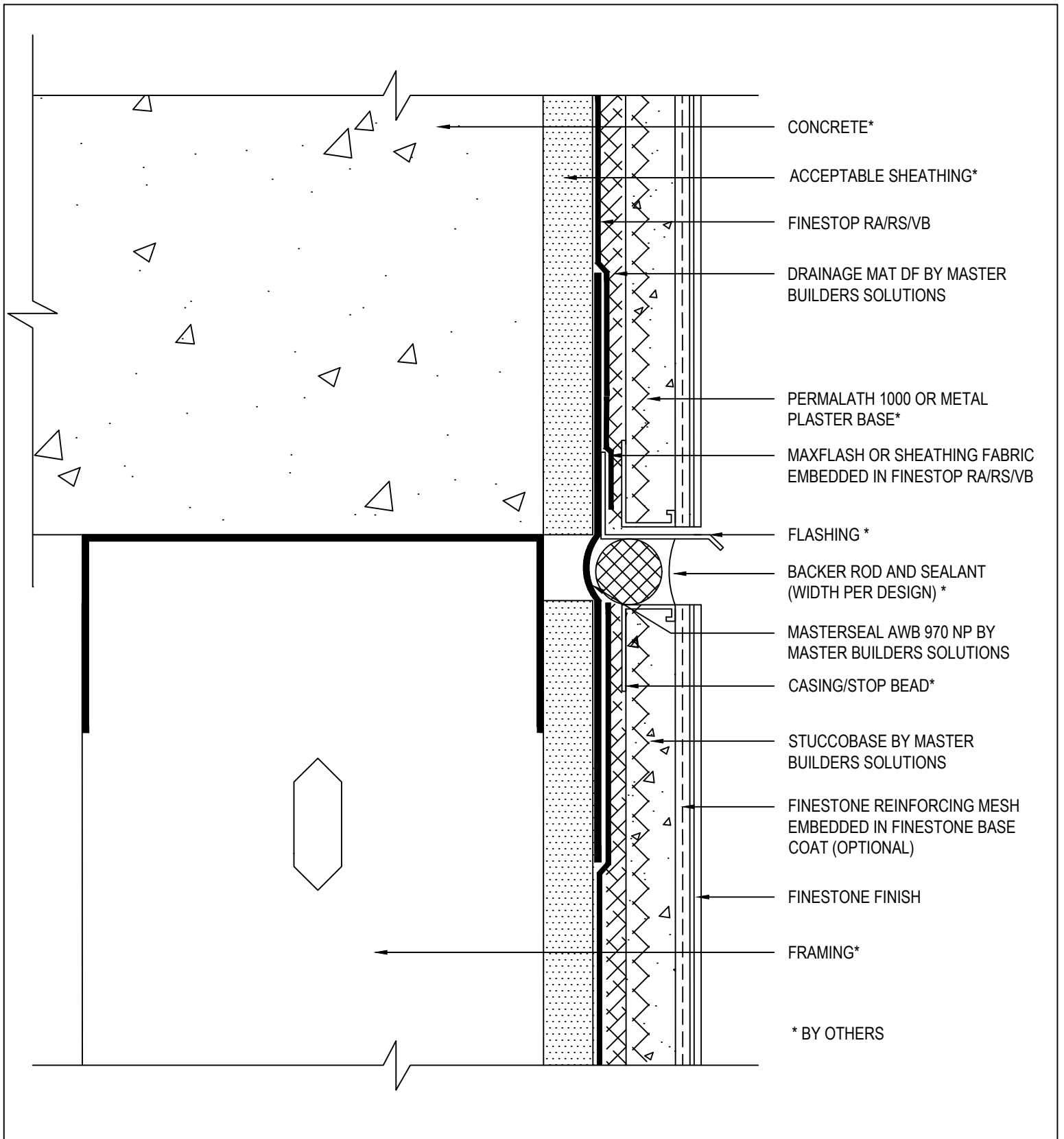
TYPICAL EXPANSION JOINT - PLAN VIEW

SCALE: NTS

05

Finestone is a brand of Master Builders Solutions. Structure, substrates, flashing, sealant and other items which are not part of the Finestone *Stucco Ultra System* are the responsibility of others. This detail is subject to change without notice. Master Builders Solutions accepts no liability for the end use of this detail. For conditions not shown, consult Master Builders Solutions for review of specific detail.

FINESTONE



FINESTONE STUCCO ULTRA WALL SYSTEM

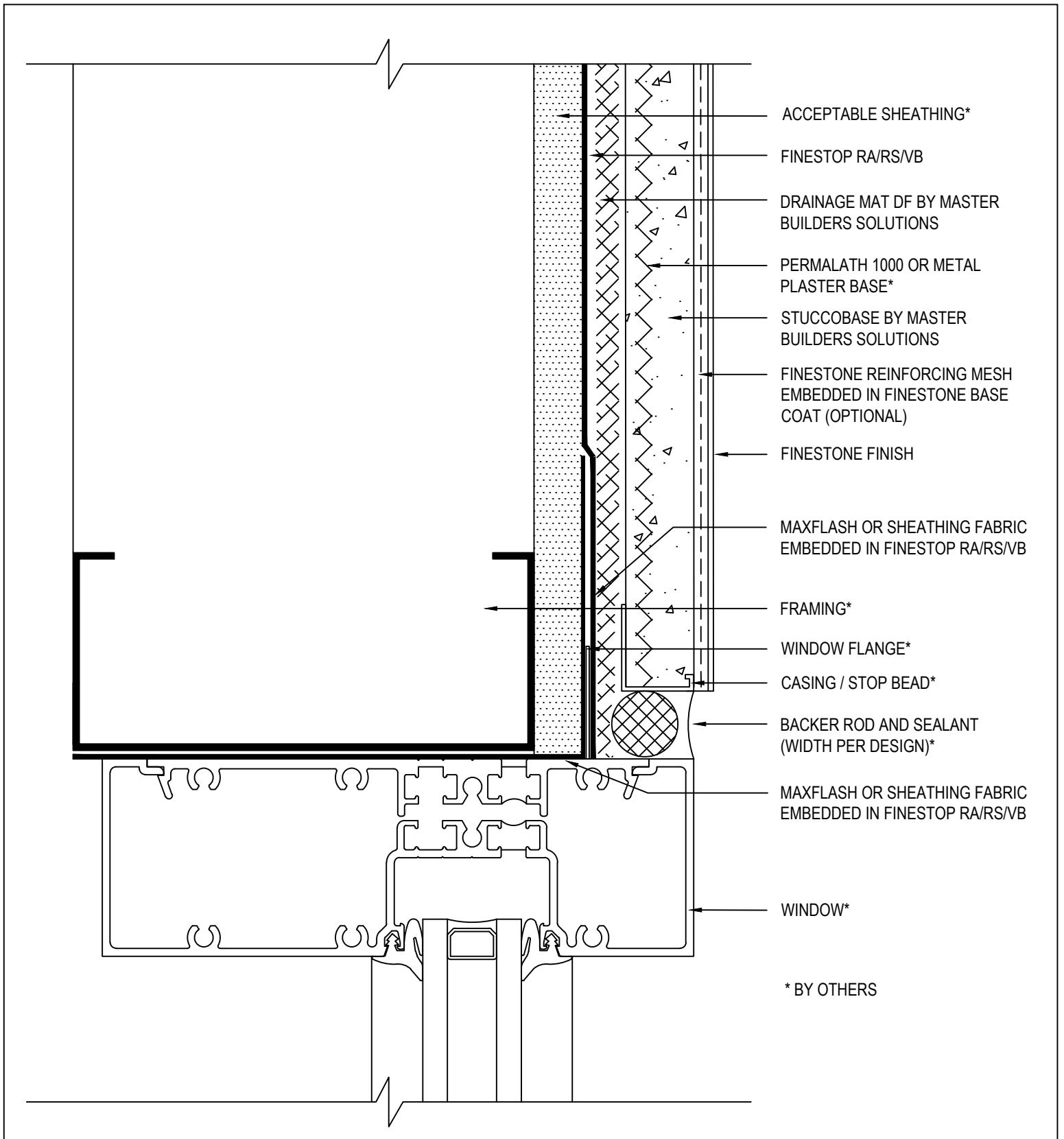
TYPICAL DRAINAGE AT FLOOR LINE

SCALE: NTS

06

Finestone is a brand of Master Builders Solutions. Structure, substrates, flashing, sealant and other items which are not part of the Finestone *Stucco Ultra System* are the responsibility of others. This detail is subject to change without notice. Master Builders Solutions accepts no liability for the end use of this detail. For conditions not shown, consult Master Builders Solutions for review of specific detail.





FINESTONE STUCCO ULTRA WALL SYSTEM

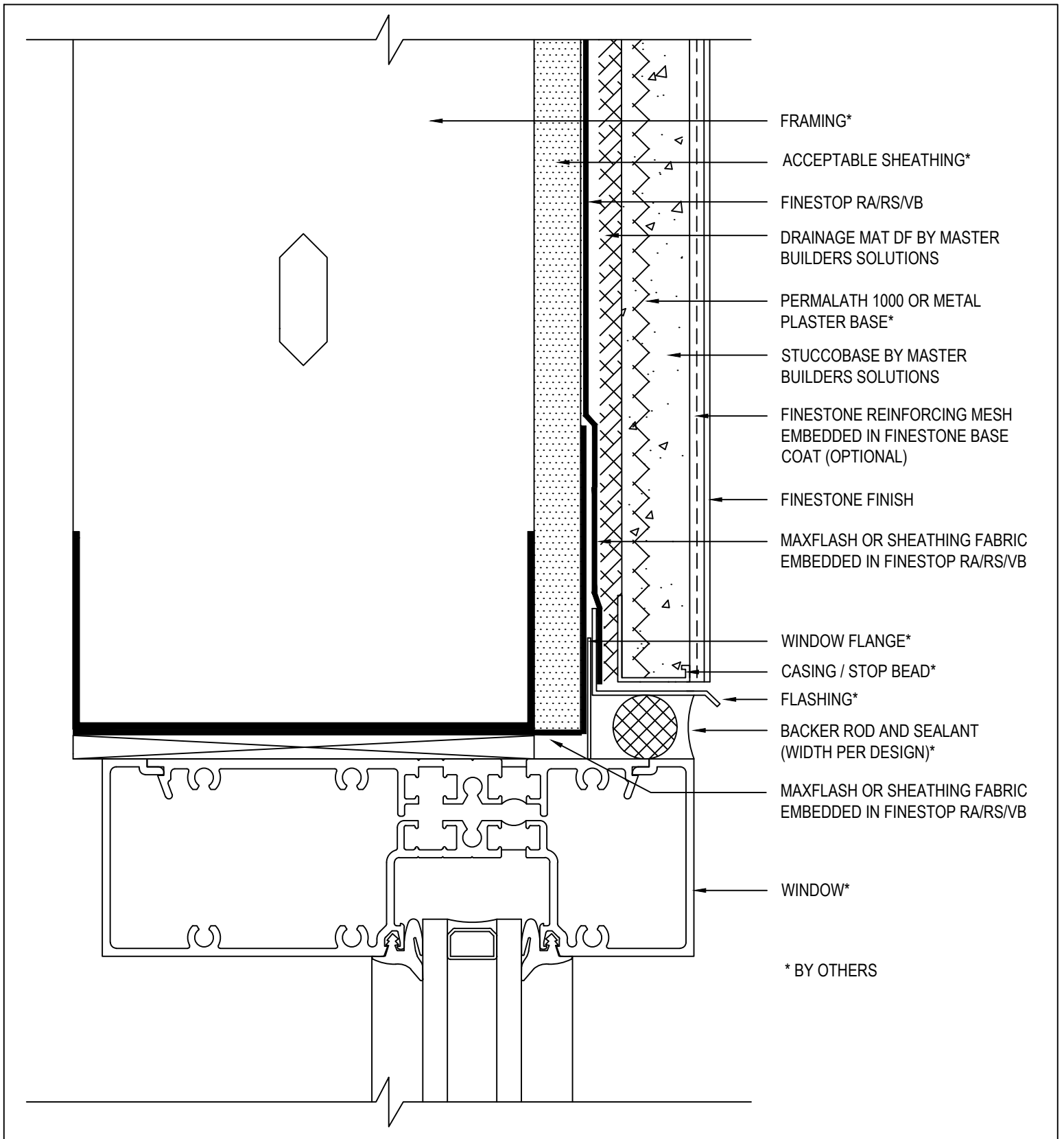
TYPICAL FLANGED WINDOW JAMB

SCALE: NTS

07

Finestone is a brand of Master Builders Solutions. Structure, substrates, flashing, sealant and other items which are not part of the Finestone *Stucco Ultra System* are the responsibility of others. This detail is subject to change without notice. Master Builders Solutions accepts no liability for the end use of this detail. For conditions not shown, consult Master Builders Solutions for review of specific detail.

FINESTONE



FINESTONE STUCCO ULTRA WALL SYSTEM

TYPICAL FLANGED WINDOW HEAD

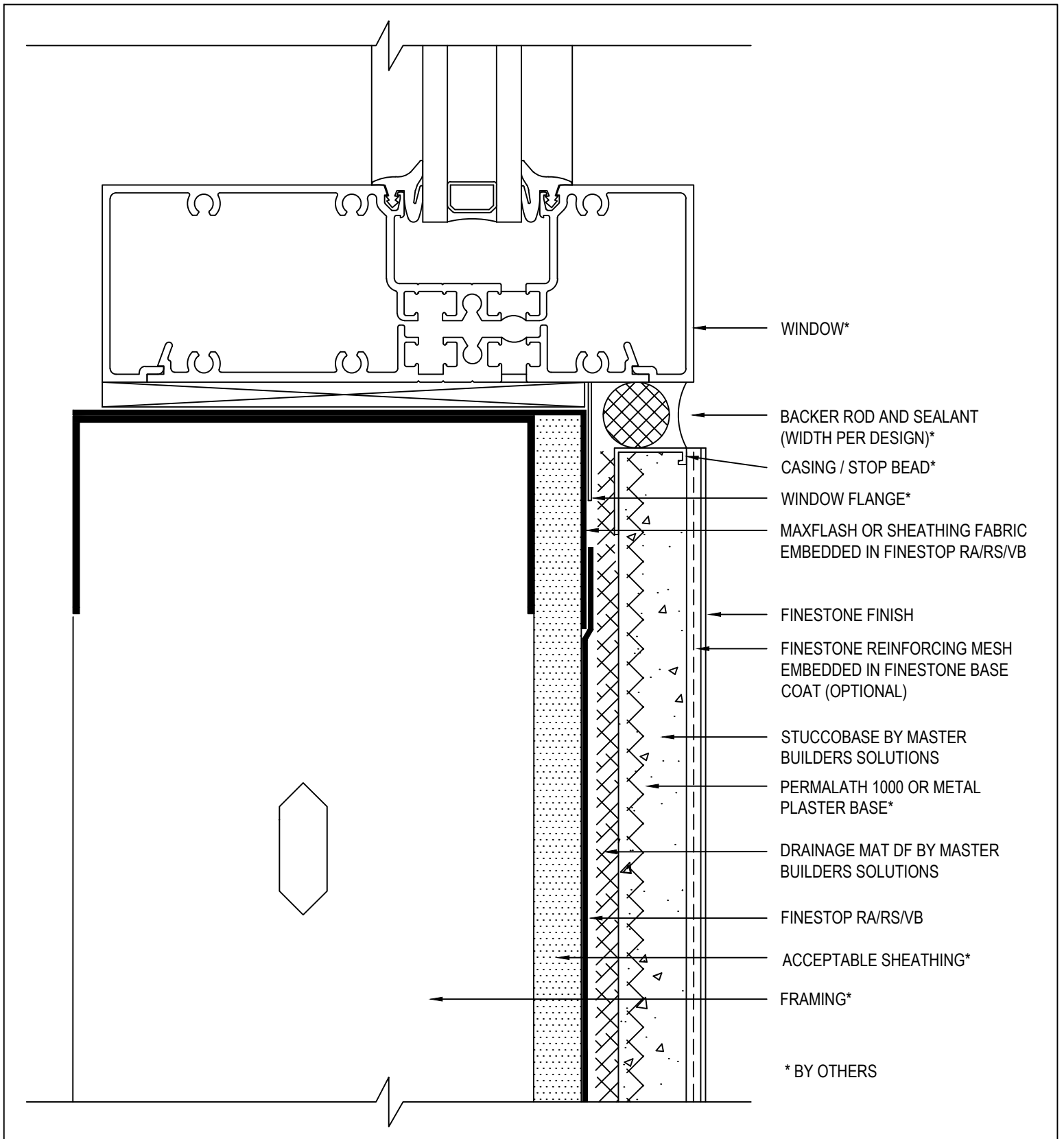
SCALE: NTS

08

Finestone is a brand of Master Builders Solutions. Structure, substrates, flashing, sealant and other items which are not part of the Finestone *Stucco Ultra System* are the responsibility of others. This detail is subject to change without notice. Master Builders Solutions accepts no liability for the end use of this detail. For conditions not shown, consult Master Builders Solutions for review of specific detail.



* BY OTHERS



FINESTONE STUCCO ULTRA WALL SYSTEM

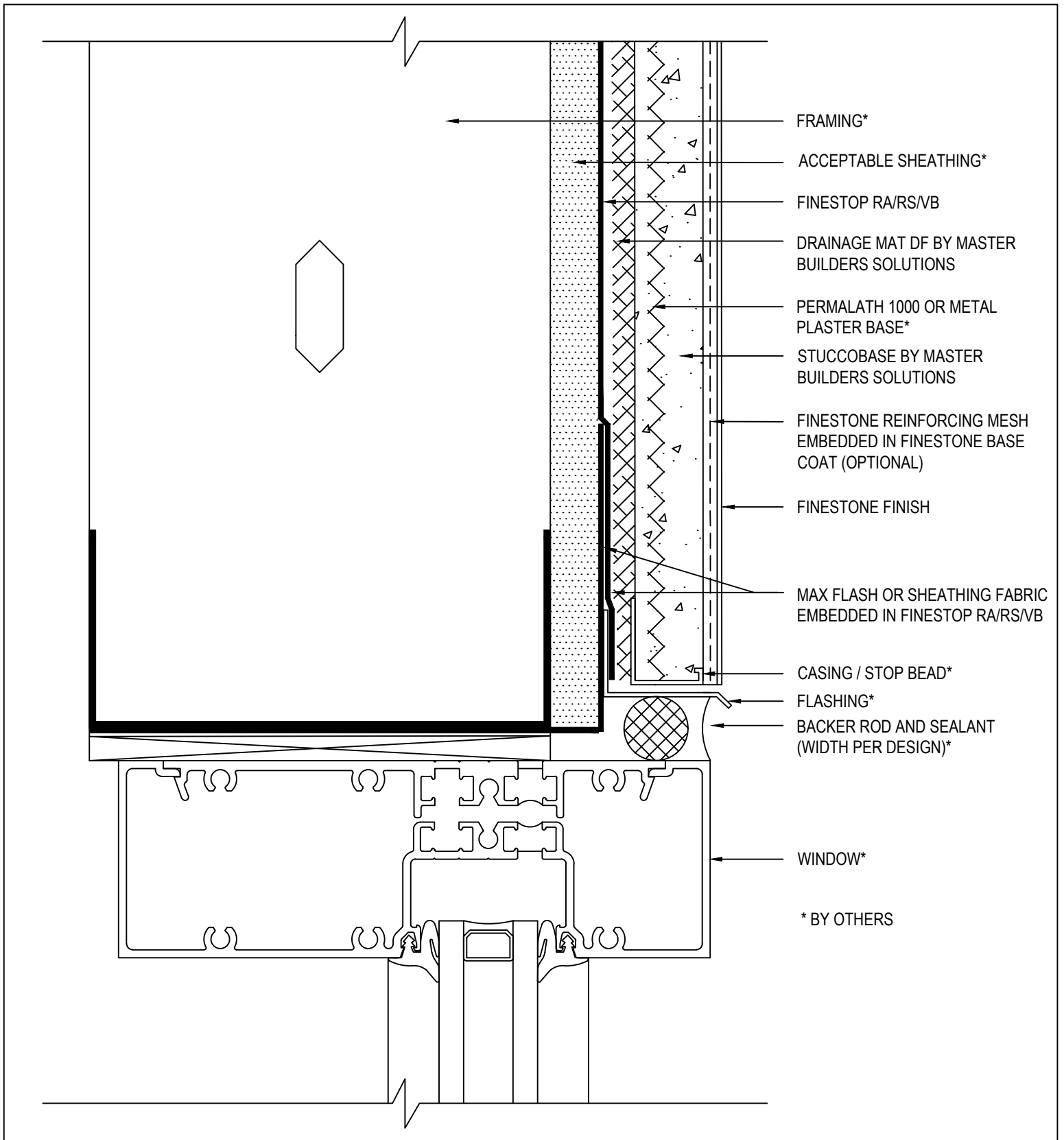
TYPICAL FLANGED WINDOW SILL

SCALE: NTS

09

Finestone is a brand of Master Builders Solutions. Structure, substrates, flashing, sealant and other items which are not part of the Finestone *Stucco Ultra System* are the responsibility of others. This detail is subject to change without notice. Master Builders Solutions accepts no liability for the end use of this detail. For conditions not shown, consult Master Builders Solutions for review of specific detail.

FINESTONE



FINESTONE STUCCO ULTRA WALL SYSTEM

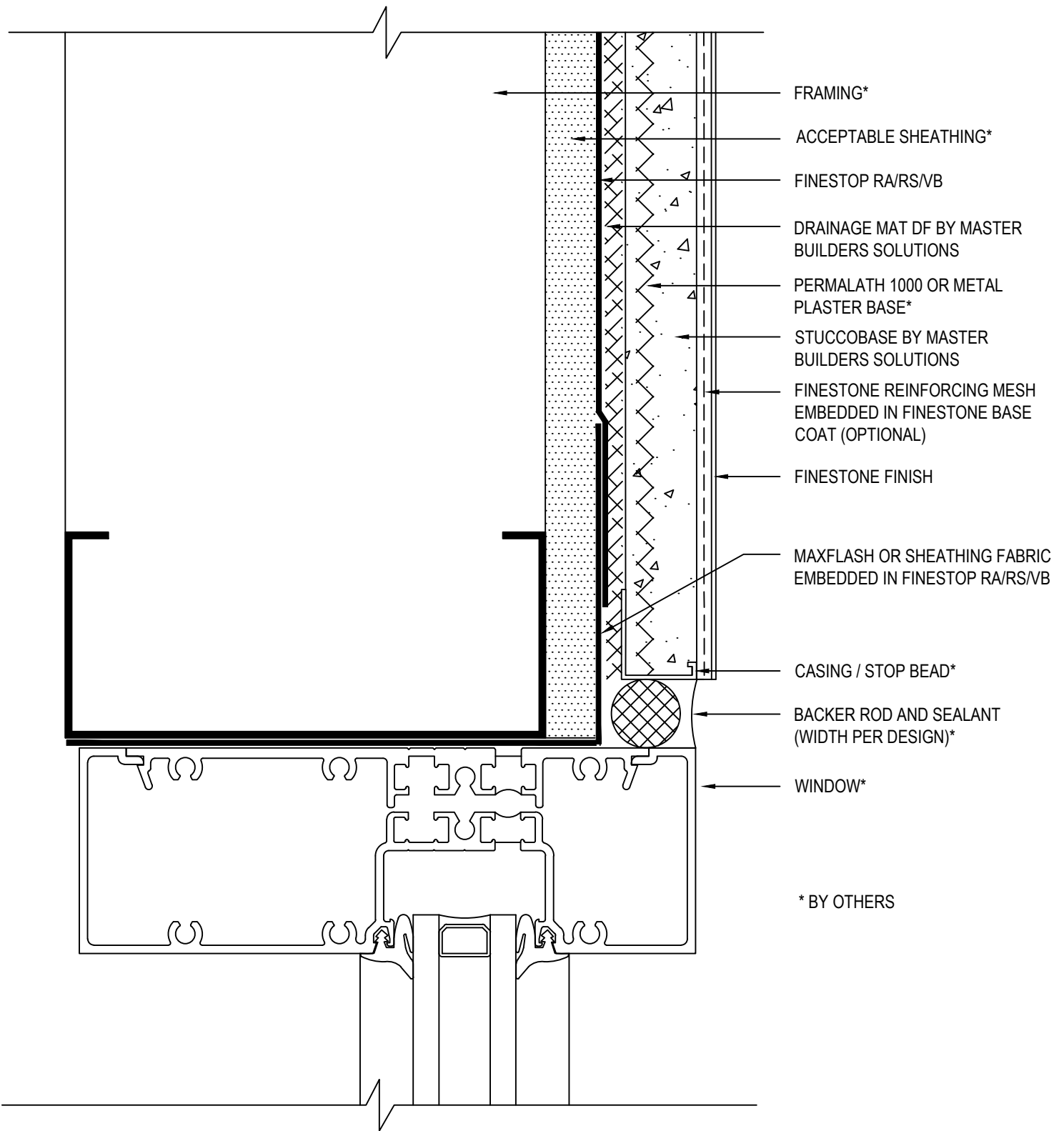
TYPICAL WINDOW HEAD

SCALE: NTS

10

Finestone is a brand of Master Builders Solutions. Structure, substrates, flashing, sealant and other items which are not part of the Finestone *Stucco Ultra System* are the responsibility of others. This detail is subject to change without notice. Master Builders Solutions accepts no liability for the end use of this detail. For conditions not shown, consult Master Builders Solutions for review of specific detail.





FINESTONE STUCCO ULTRA WALL SYSTEM

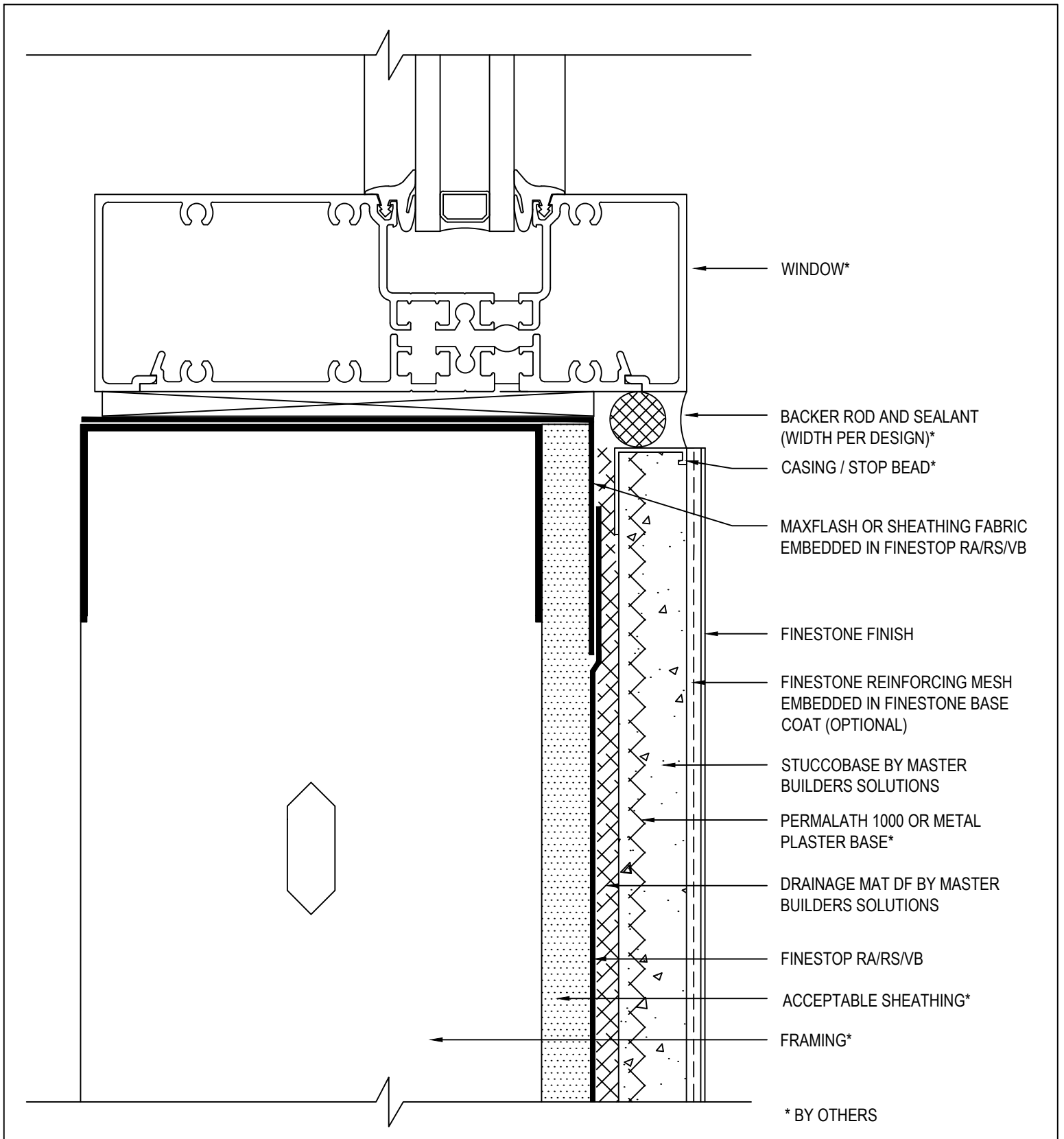
TYPICAL WINDOW JAMB

SCALE: NTS

11

Finestone is a brand of Master Builders Solutions. Structure, substrates, flashing, sealant and other items which are not part of the Finestone *Stucco Ultra System* are the responsibility of others. This detail is subject to change without notice. Master Builders Solutions accepts no liability for the end use of this detail. For conditions not shown, consult Master Builders Solutions for review of specific detail.

FINESTONE



FINESTONE STUCCO ULTRA WALL SYSTEM

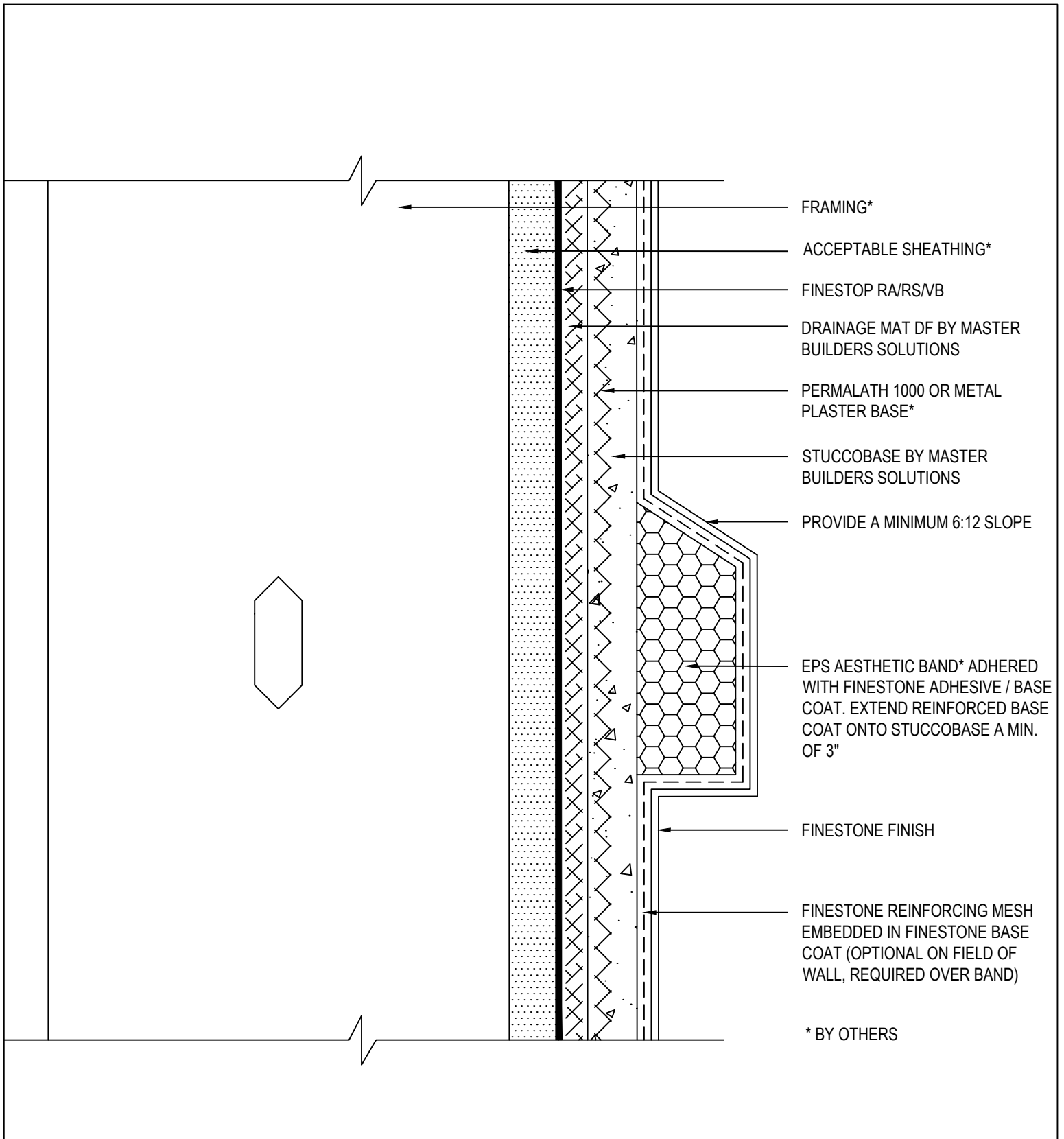
TYPICAL WINDOW SILL

SCALE: NTS

12

Finestone is a brand of Master Builders Solutions. Structure, substrates, flashing, sealant and other items which are not part of the Finestone *Stucco Ultra System* are the responsibility of others. This detail is subject to change without notice. Master Builders Solutions accepts no liability for the end use of this detail. For conditions not shown, consult Master Builders Solutions for review of specific detail.





FINESTONE STUCCO ULTRA WALL SYSTEM

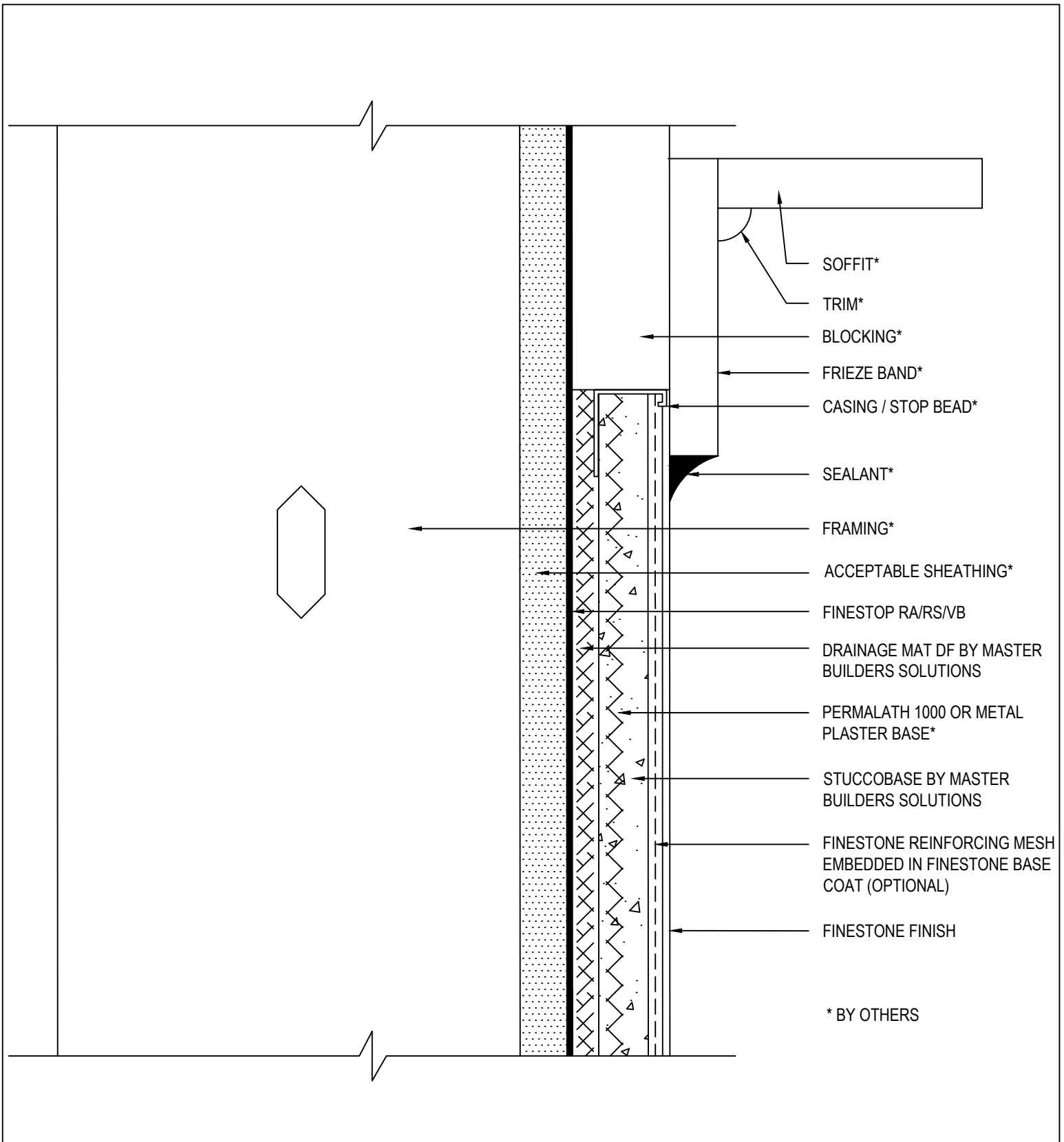
TYPICAL EPS SHAPE APPLICATION

SCALE: NTS

13

Finestone is a brand of Master Builders Solutions. Structure, substrates, flashing, sealant and other items which are not part of the Finestone *Stucco Ultra System* are the responsibility of others. This detail is subject to change without notice. Master Builders Solutions accepts no liability for the end use of this detail. For conditions not shown, consult Master Builders Solutions for review of specific detail.





FINESTONE STUCCO ULTRA WALL SYSTEM

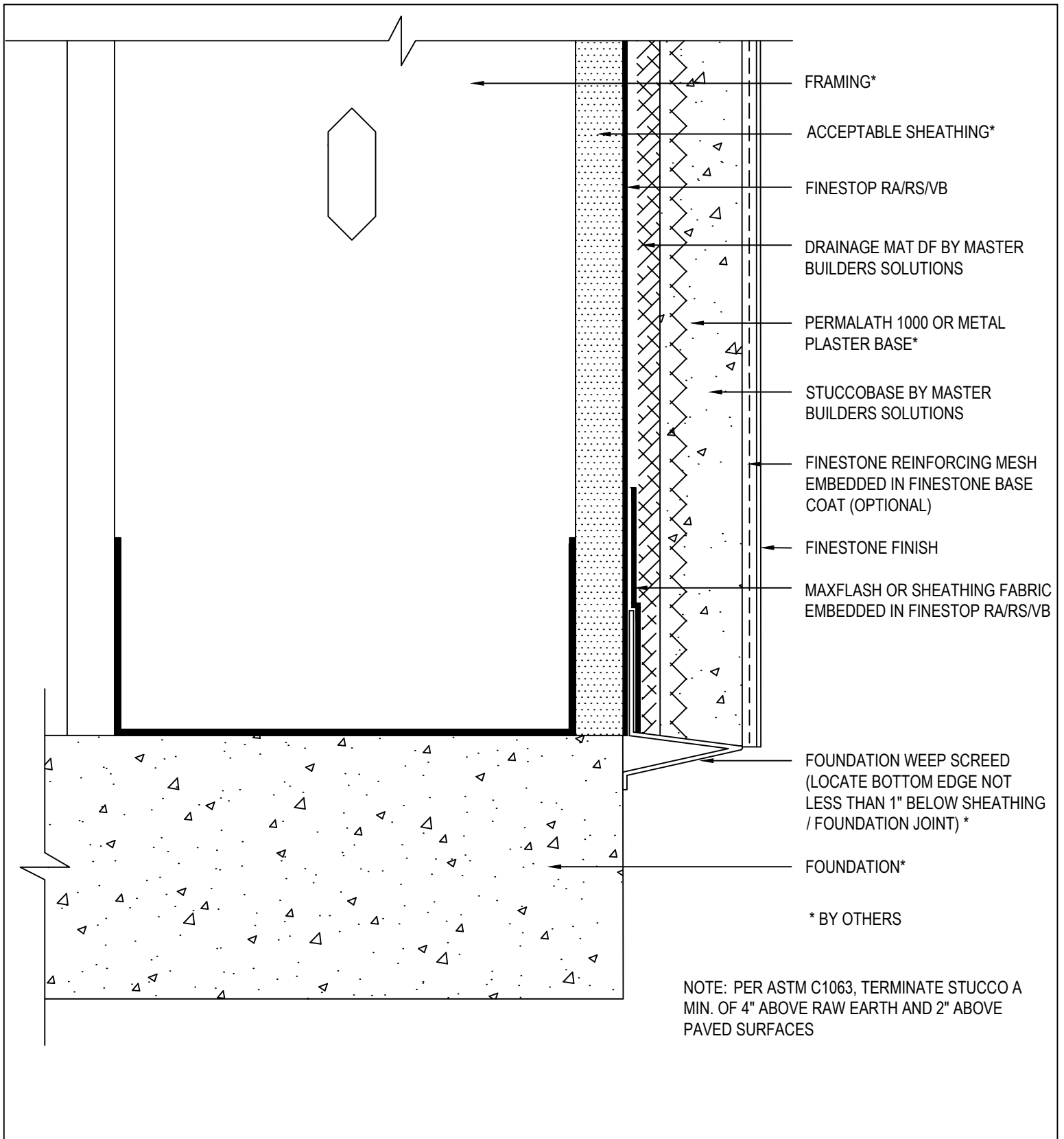
TYPICAL TERMINATION AT SOFFIT / GABLE END

SCALE: NTS

14

Finestone is a brand of Master Builders Solutions. Structure, substrates, flashing, sealant and other items which are not part of the Finestone *Stucco Ultra System* are the responsibility of others. This detail is subject to change without notice. Master Builders Solutions accepts no liability for the end use of this detail. For conditions not shown, consult Master Builders Solutions for review of specific detail.





FINESTONE STUCCO ULTRA WALL SYSTEM

TYPICAL TERMINATION AT FOUNDATION

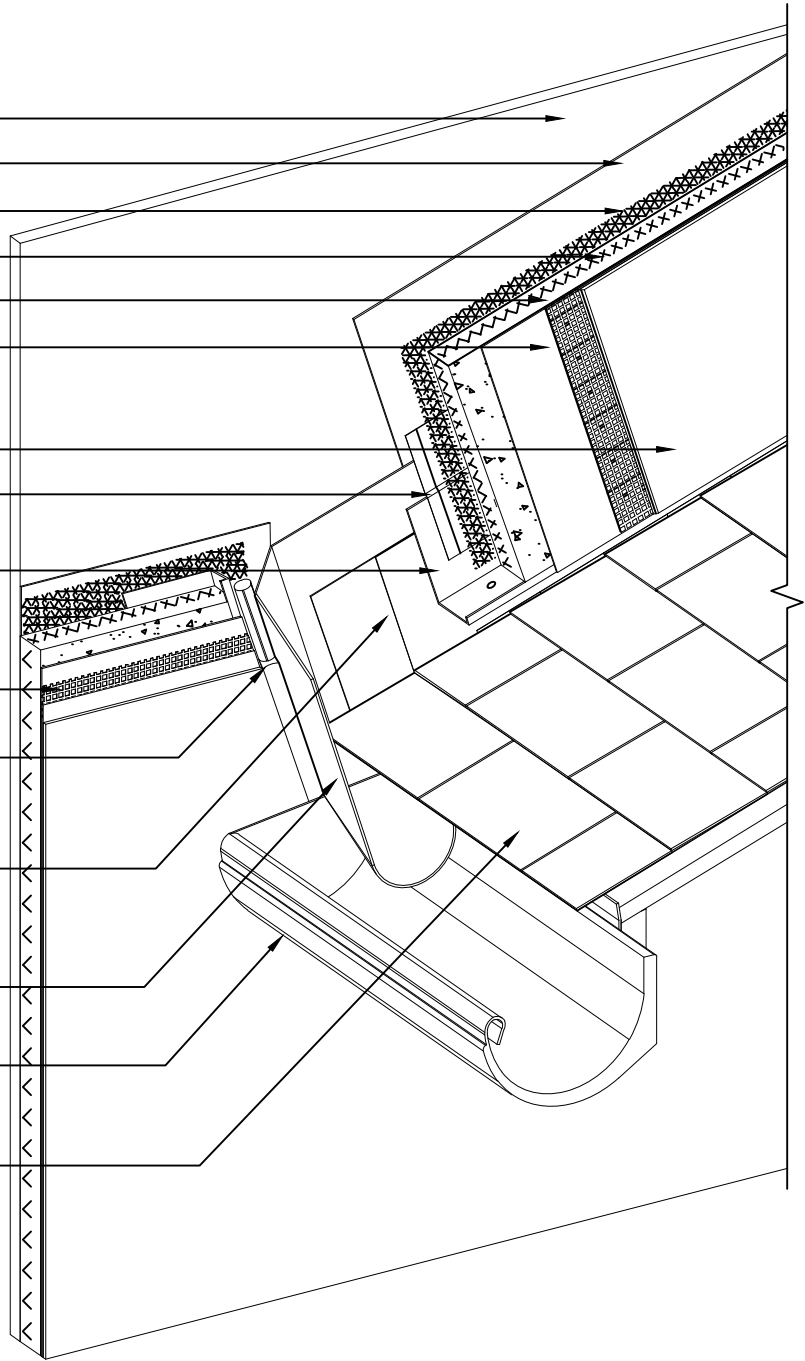
SCALE: NTS

15

Finestone is a brand of Master Builders Solutions. Structure, substrates, flashing, sealant and other items which are not part of the Finestone *Stucco Ultra System* are the responsibility of others. This detail is subject to change without notice. Master Builders Solutions accepts no liability for the end use of this detail. For conditions not shown, consult Master Builders Solutions for review of specific detail.



- ACCEPTABLE SHEATHING*
- FINESTOP RA/RS/VB
- DRAINAGE MAT DF
- PERMALATH 1000 OR METAL PLASTER BASE*
- STUCCOBASE
- FINESTONE REINFORCING MESH
EMBEDDED IN FINESTONE BASE COAT
(OPTIONAL)
- FINESTONE FINISH
- MAXFLASH OR SHEATHING FABRIC
EMBEDDED IN FINESTOP RA/RS/VB
- CASING BEAD WITH WEEPS*
- FINESTONE STUCCO ULTRA SYSTEM
- BACKER ROD & SEALANT*
- STEP FLASHING*
- KICK-OUT FLASHING*
- GUTTER*
- ROOF SHINGLES*



*BY OTHERS

FINESTONE STUCCO ULTRA WALL SYSTEM

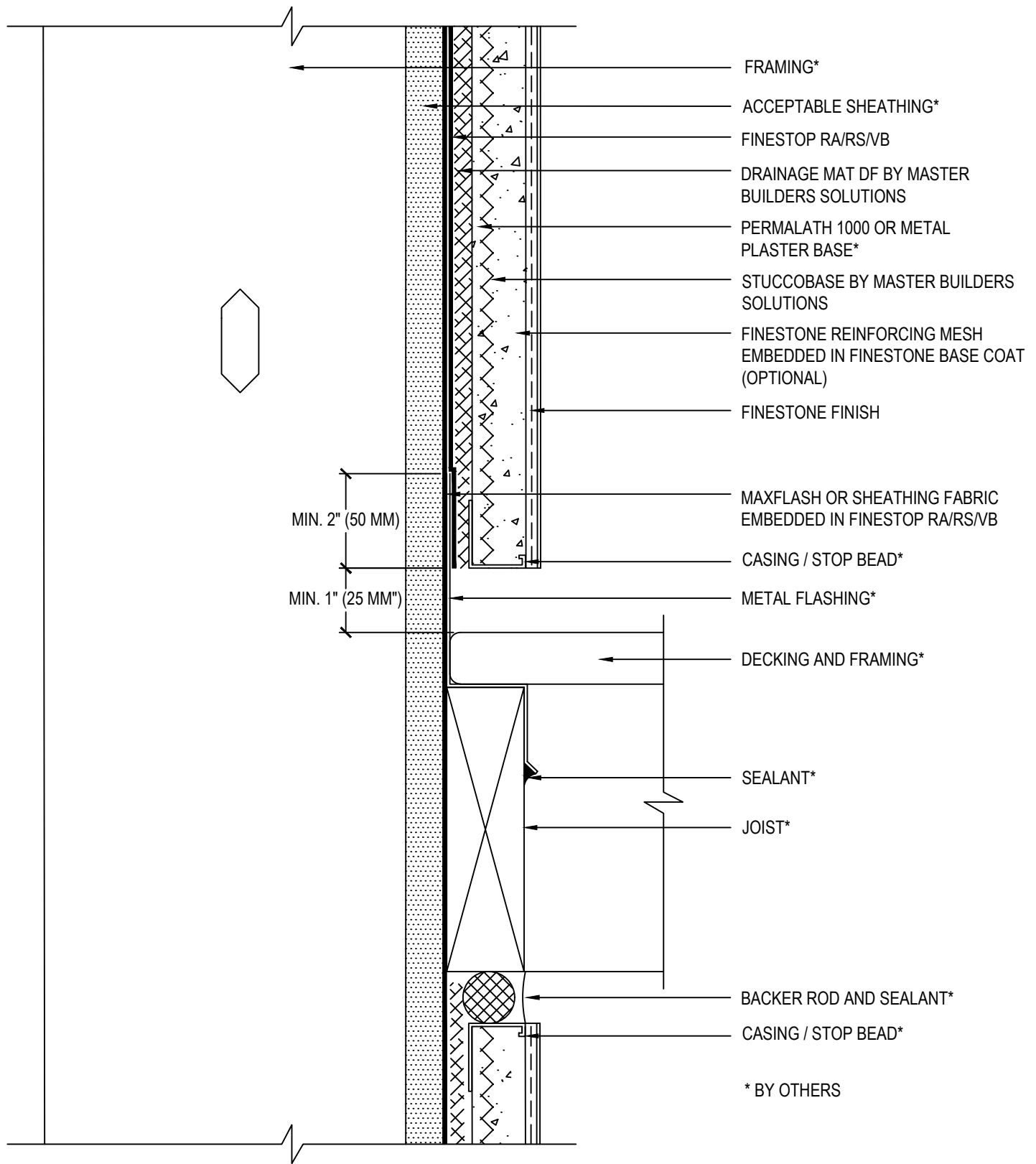
TYPICAL KICK-OUT FLASHING

SCALE: NTS

16

Finestone is a brand of Master Builders Solutions. Structure, substrates, flashing, sealant and other items which are not part of the Finestone *Stucco Ultra System* are the responsibility of others. This detail is subject to change without notice. Master Builders Solutions accepts no liability for the end use of this detail. For conditions not shown, consult Master Builders Solutions for review of specific detail.





FINESTONE STUCCO ULTRA WALL SYSTEM

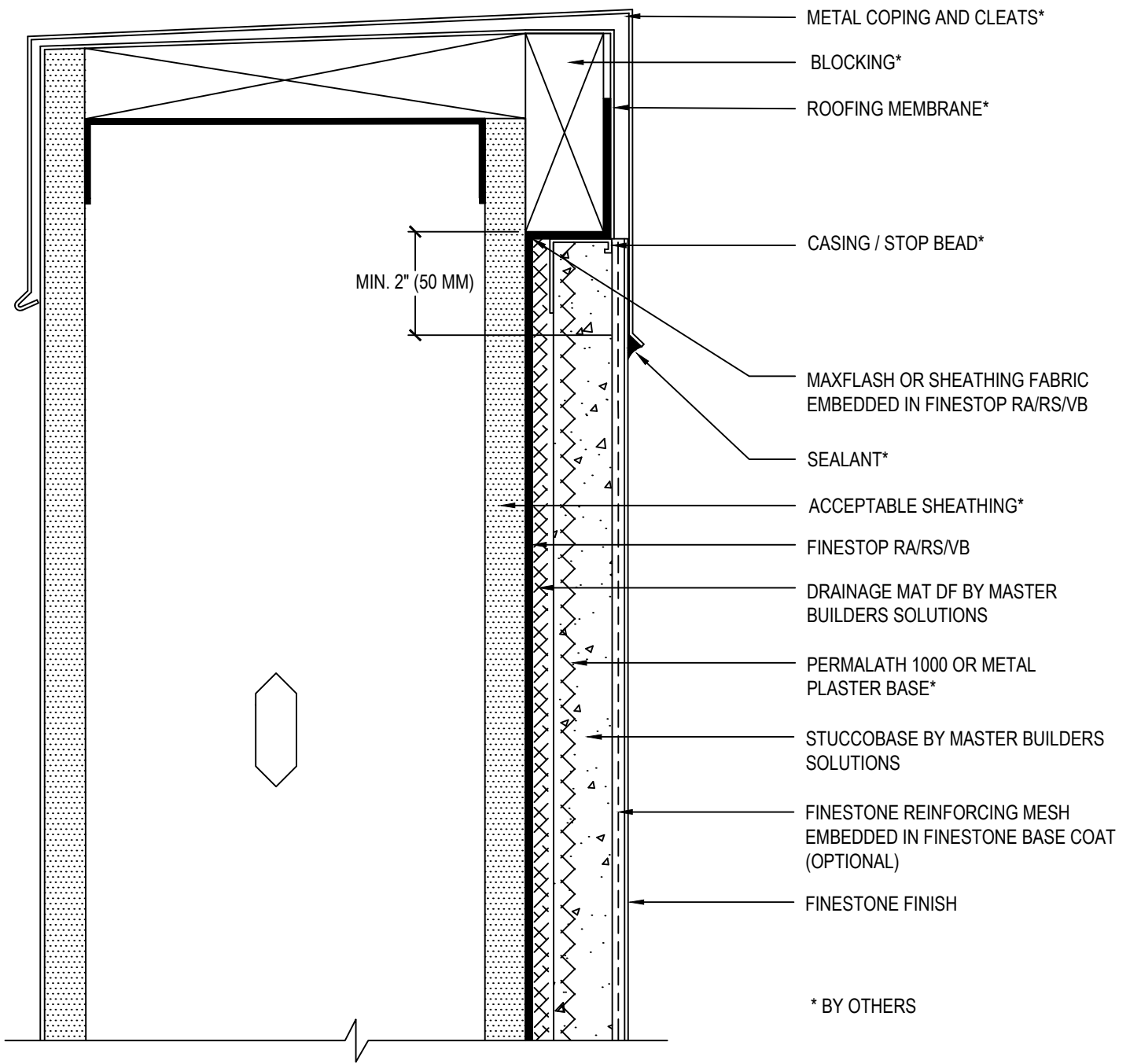
TYPICAL TERMINATION AT DECK

SCALE: NTS

17

Finestone is a brand of Master Builders Solutions. Structure, substrates, flashing, sealant and other items which are not part of the Finestone *Stucco Ultra System* are the responsibility of others. This detail is subject to change without notice. Master Builders Solutions accepts no liability for the end use of this detail. For conditions not shown, consult Master Builders Solutions for review of specific detail.





FINESTONE STUCCO ULTRA WALL SYSTEM

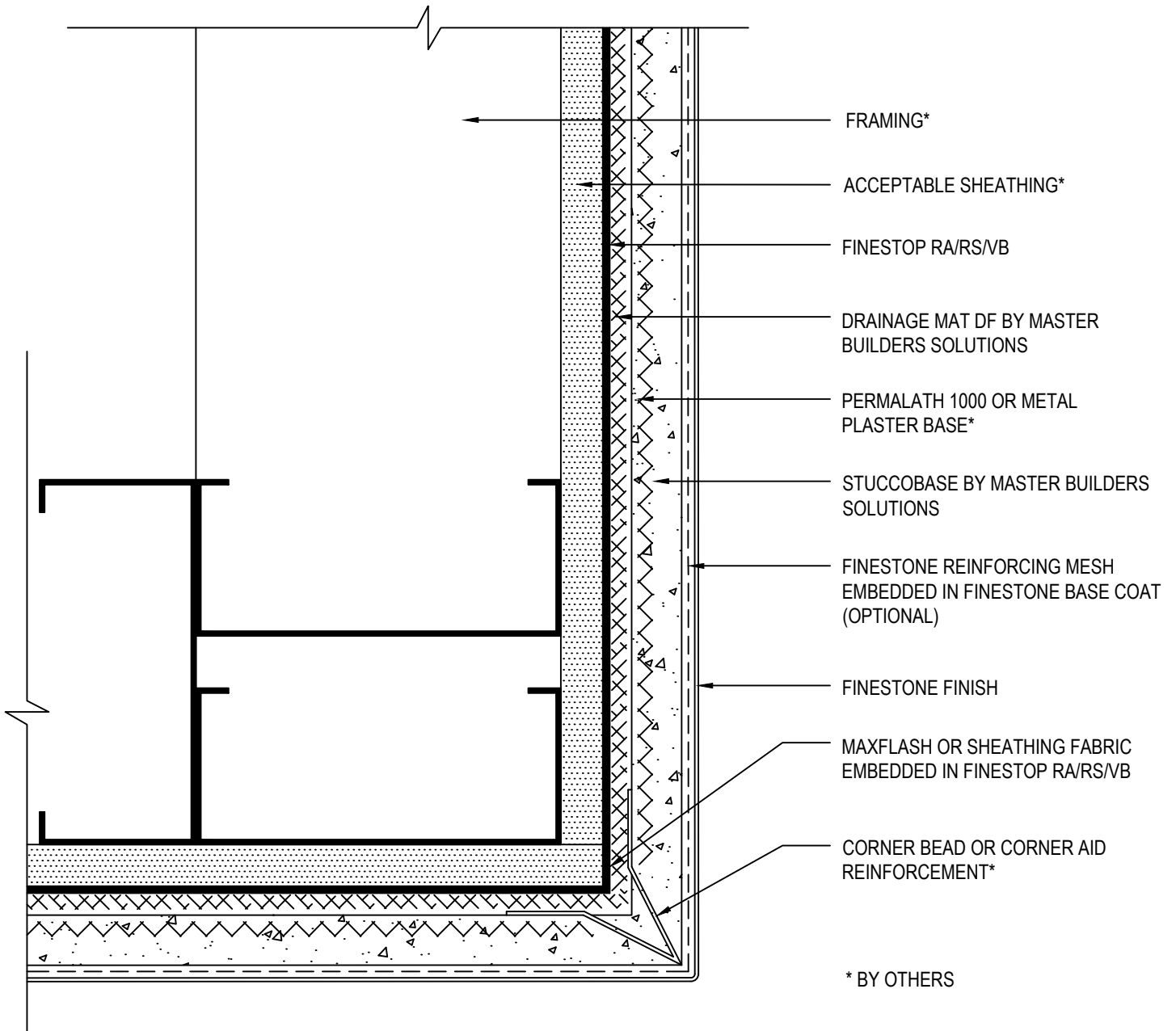
TYPICAL COPING

SCALE: NTS

18

Finestone is a brand of Master Builders Solutions. Structure, substrates, flashing, sealant and other items which are not part of the Finestone *Stucco Ultra System* are the responsibility of others. This detail is subject to change without notice. Master Builders Solutions accepts no liability for the end use of this detail. For conditions not shown, consult Master Builders Solutions for review of specific detail.





FINESTONE STUCCO ULTRA WALL SYSTEM

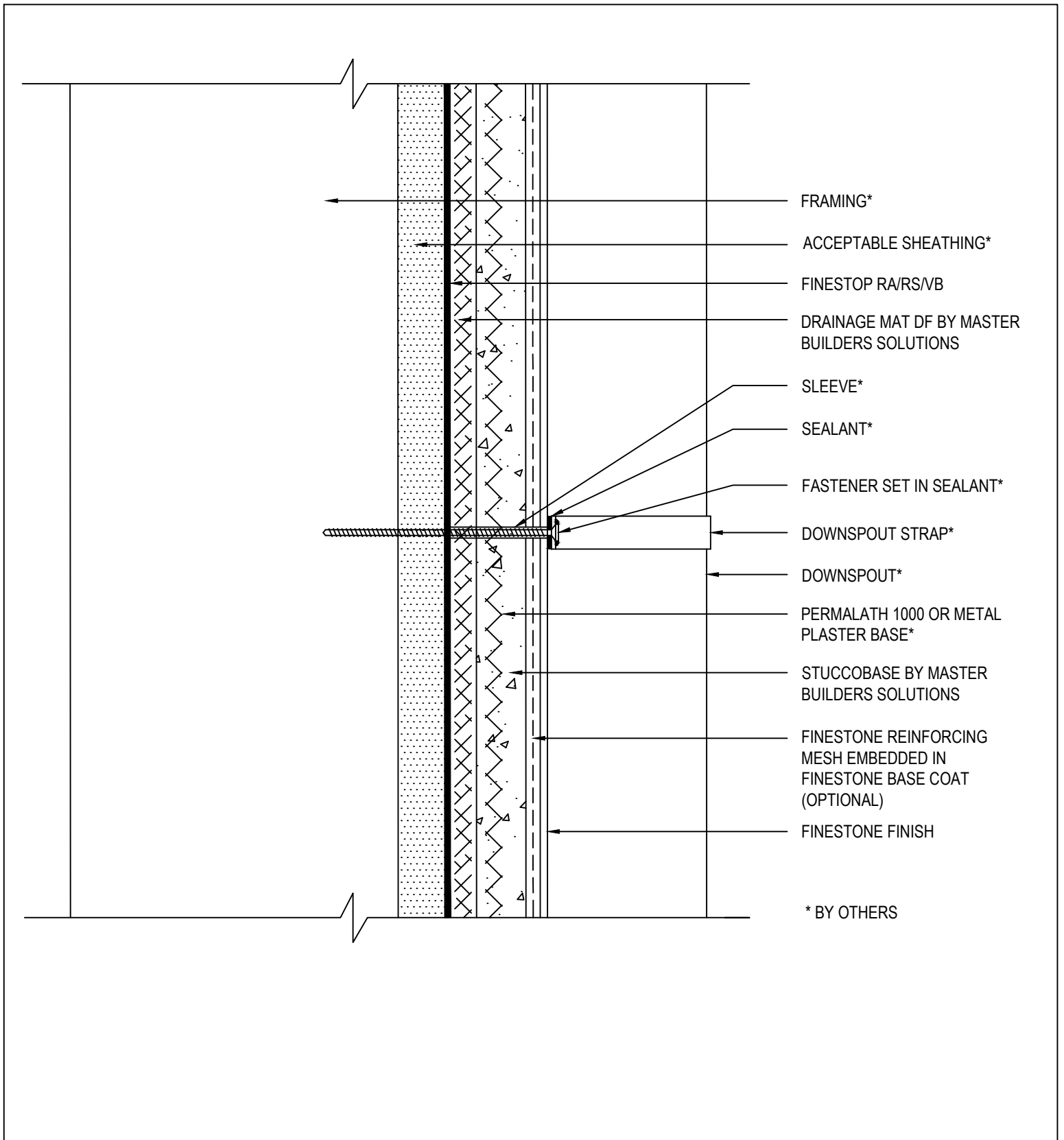
TYPICAL CORNER BEAD

SCALE: NTS

19

Finestone is a brand of Master Builders Solutions. Structure, substrates, flashing, sealant and other items which are not part of the Finestone *Stucco Ultra System* are the responsibility of others. This detail is subject to change without notice. Master Builders Solutions accepts no liability for the end use of this detail. For conditions not shown, consult Master Builders Solutions for review of specific detail.

FINESTONE



FINESTONE STUCCO ULTRA WALL SYSTEM

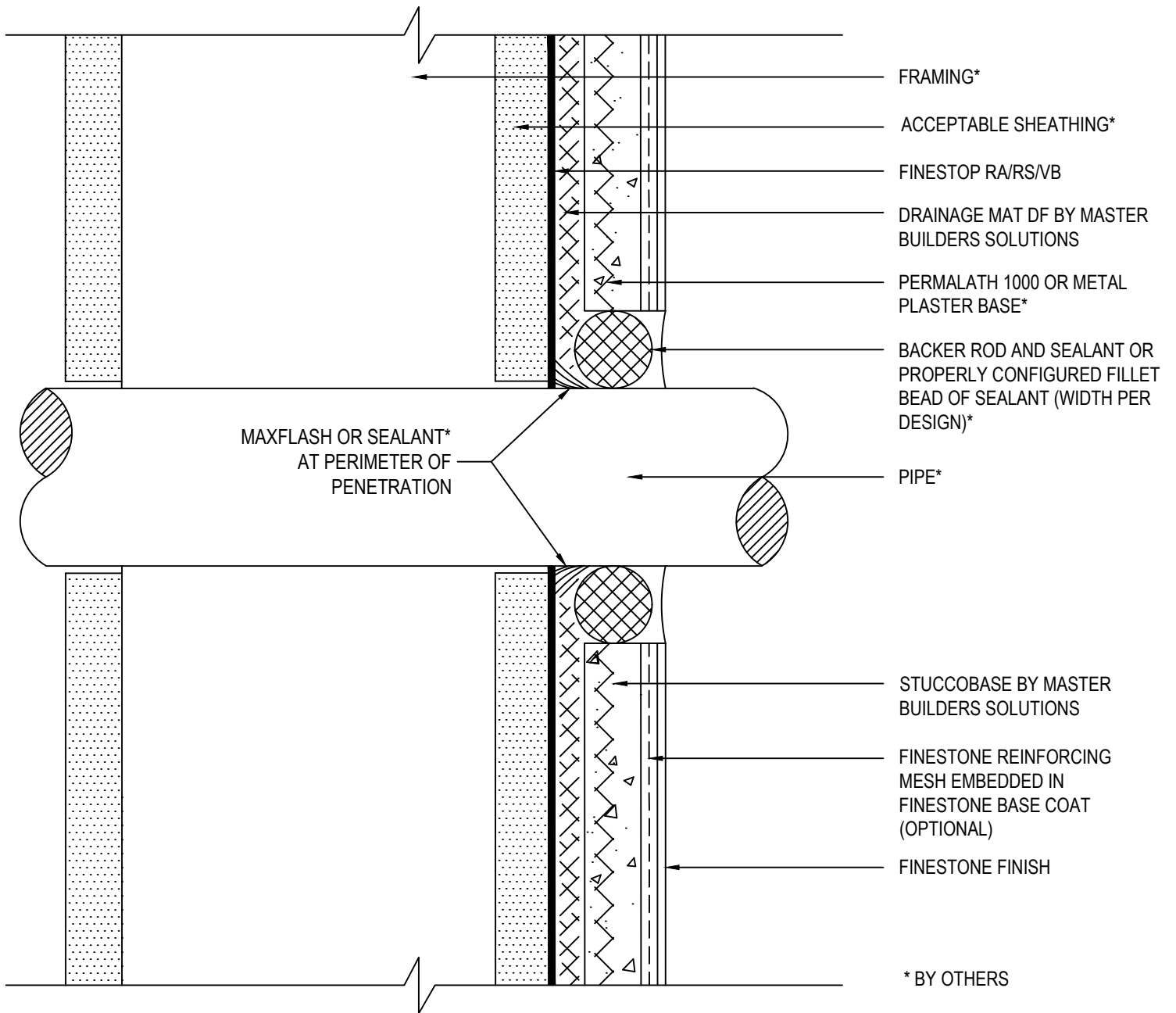
TYPICAL DOWNSPOUT APPLICATION

SCALE: NTS

20

Finestone is a brand of Master Builders Solutions. Structure, substrates, flashing, sealant and other items which are not part of the Finestone *Stucco Ultra System* are the responsibility of others. This detail is subject to change without notice. Master Builders Solutions accepts no liability for the end use of this detail. For conditions not shown, consult Master Builders Solutions for review of specific detail.

FINESTONE



FINESTONE STUCCO ULTRA WALL SYSTEM

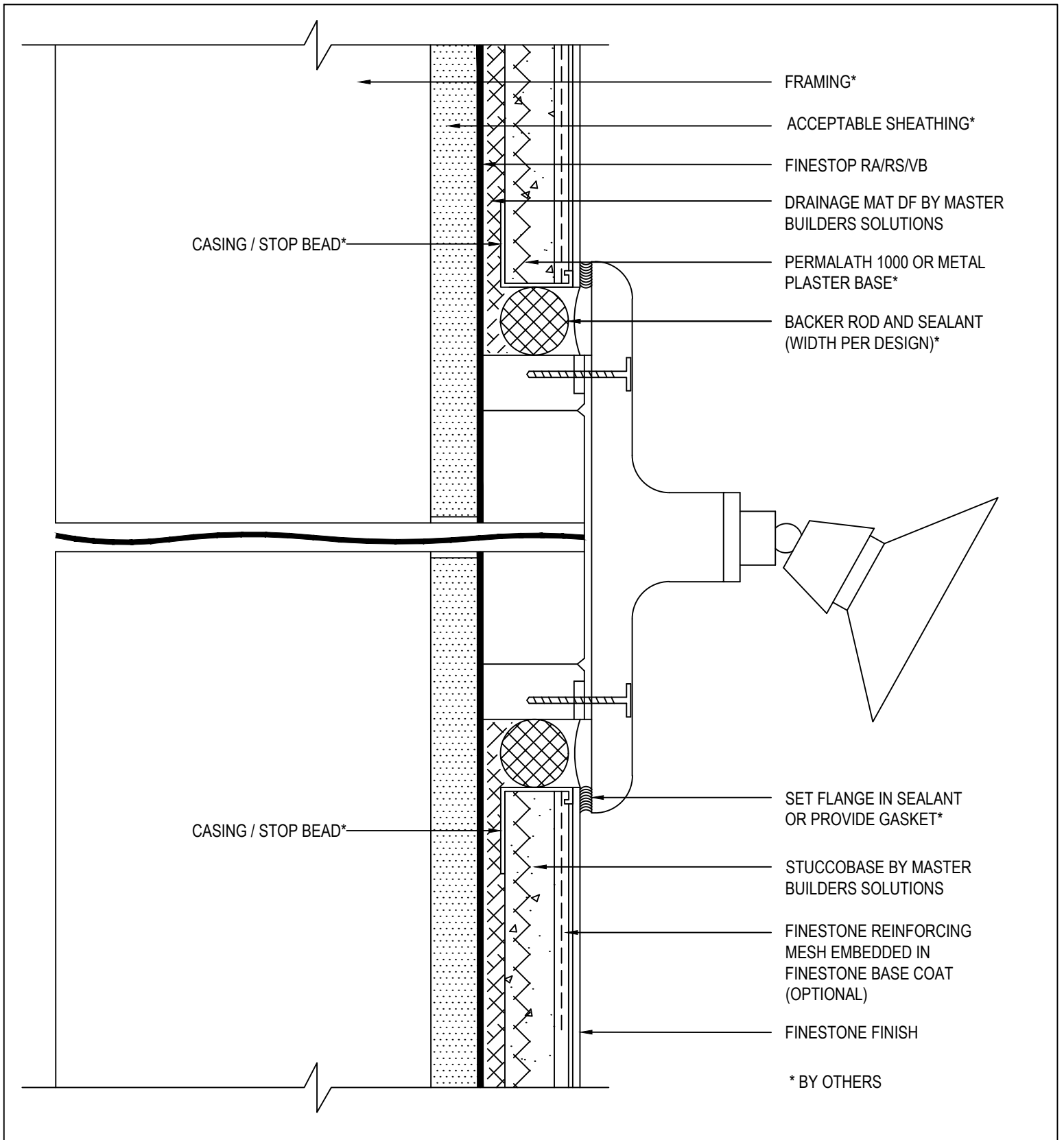
TYPICAL PIPE PENETRATION

SCALE: NTS

21

Finestone is a brand of Master Builders Solutions. Structure, substrates, flashing, sealant and other items which are not part of the Finestone *Stucco Ultra System* are the responsibility of others. This detail is subject to change without notice. Master Builders Solutions accepts no liability for the end use of this detail. For conditions not shown, consult Master Builders Solutions for review of specific detail.

FINESTONE



FINESTONE STUCCO ULTRA WALL SYSTEM

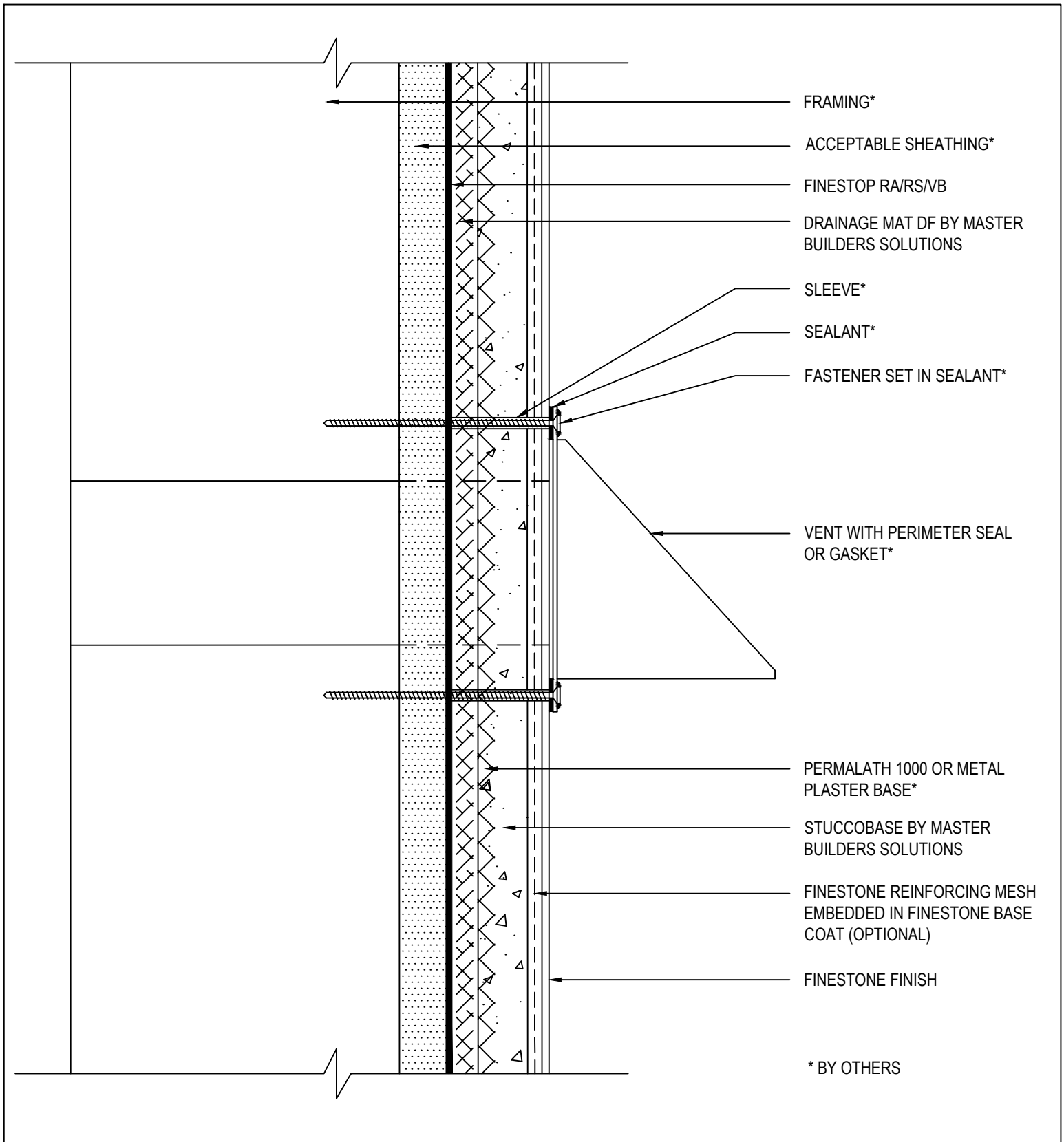
TYPICAL LIGHT FIXTURE

SCALE: NTS

22

Finestone is a brand of Master Builders Solutions. Structure, substrates, flashing, sealant and other items which are not part of the Finestone *Stucco Ultra System* are the responsibility of others. This detail is subject to change without notice. Master Builders Solutions accepts no liability for the end use of this detail. For conditions not shown, consult Master Builders Solutions for review of specific detail.





FINESTONE STUCCO ULTRA WALL SYSTEM

TYPICAL VENT

SCALE: NTS

23

Finestone is a brand of Master Builders Solutions. Structure, substrates, flashing, sealant and other items which are not part of the Finestone *Stucco Ultra System* are the responsibility of others. This detail is subject to change without notice. Master Builders Solutions accepts no liability for the end use of this detail. For conditions not shown, consult Master Builders Solutions for review of specific detail.

FINESTONE