

■ - BASF
We create chemistry

Senergy[®]

Channeled Adhesive CI Design with MaxGrip Veneer Mortar

Continuously Insulated System
with Adhered Veneer
Typical Details



Channeled Adhesive CI Design with MaxGrip Veneer Mortar

Typical Details

Continuously Insulated System with Adhered Veneer

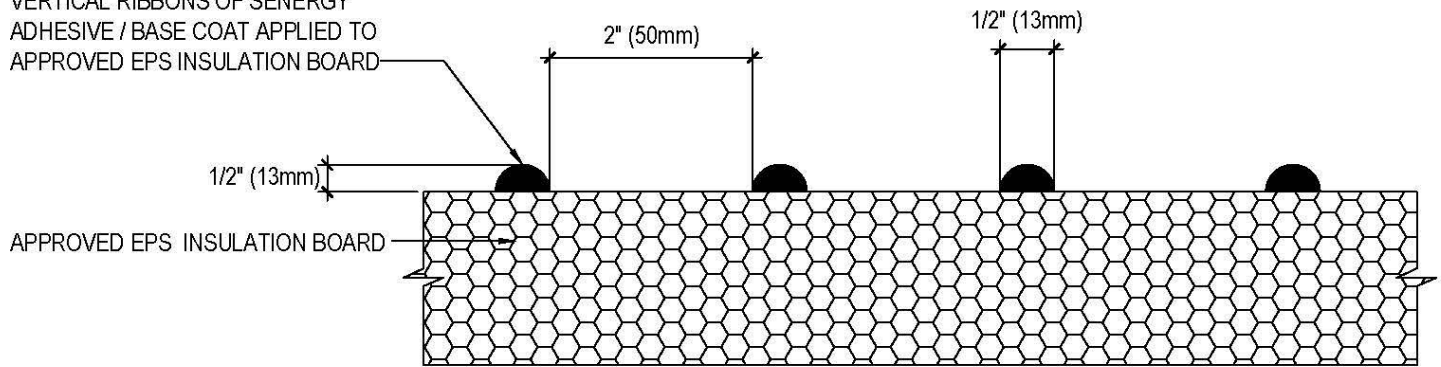
Table of Contents

1	Typical Adhesive Pattern	13	Typical Window Head (Flush) with Weeps
2	Typical Application	14	Typical Window Head (Flush) with Diverter Track
3	Typical Isometric View	15	Typical Window Jamb (Flush)
4	Typical Outside Corner Application	16	Typical Window Sill (Flush)
5	Typical Pipe Penetration	17	Typical Window Head (Recessed)
6	Typical Expansion Joint Detail (Plan View)	18	Typical Window Jamb (Recessed)
7	Typical Expansion Joint at Change in Substrate (Plan View)	19	Typical Window Sill Detail (Recessed)
8	Typical Expansion Joint Detail at Floorline	20	Typical Flanged Window Head
9	Typical Drainage at Floorline	21	Typical Flanged Window Jamb
10	Typical Termination at Foundation	22	Typical Flanged Window Sill
11	Typical Termination at Foundation (Flush)	23	Typical Coping Detail
12	Typical Window Head (Flush)	24	Typical Railing Attachment

Notes:

- Unsatisfactory conditions shall be reported to the General Contractor and corrected before the application of BASF products.
- Install BASF materials in accordance with current installation instructions.
- The details within represent BASF Corporation - Wall Systems (hereinafter BASF Wall Systems) latest recommendations. They are presented in good faith by BASF Wall Systems. The details are subject to change without notice. BASF Wall Systems accepts no liability for the end use of the details. For conditions not shown, consult BASF Wall Systems for review of specific detail.

VERTICAL RIBBONS OF SENERGY
ADHESIVE / BASE COAT APPLIED TO
APPROVED EPS INSULATION BOARD



TYPICAL ADHESIVE PATTERN

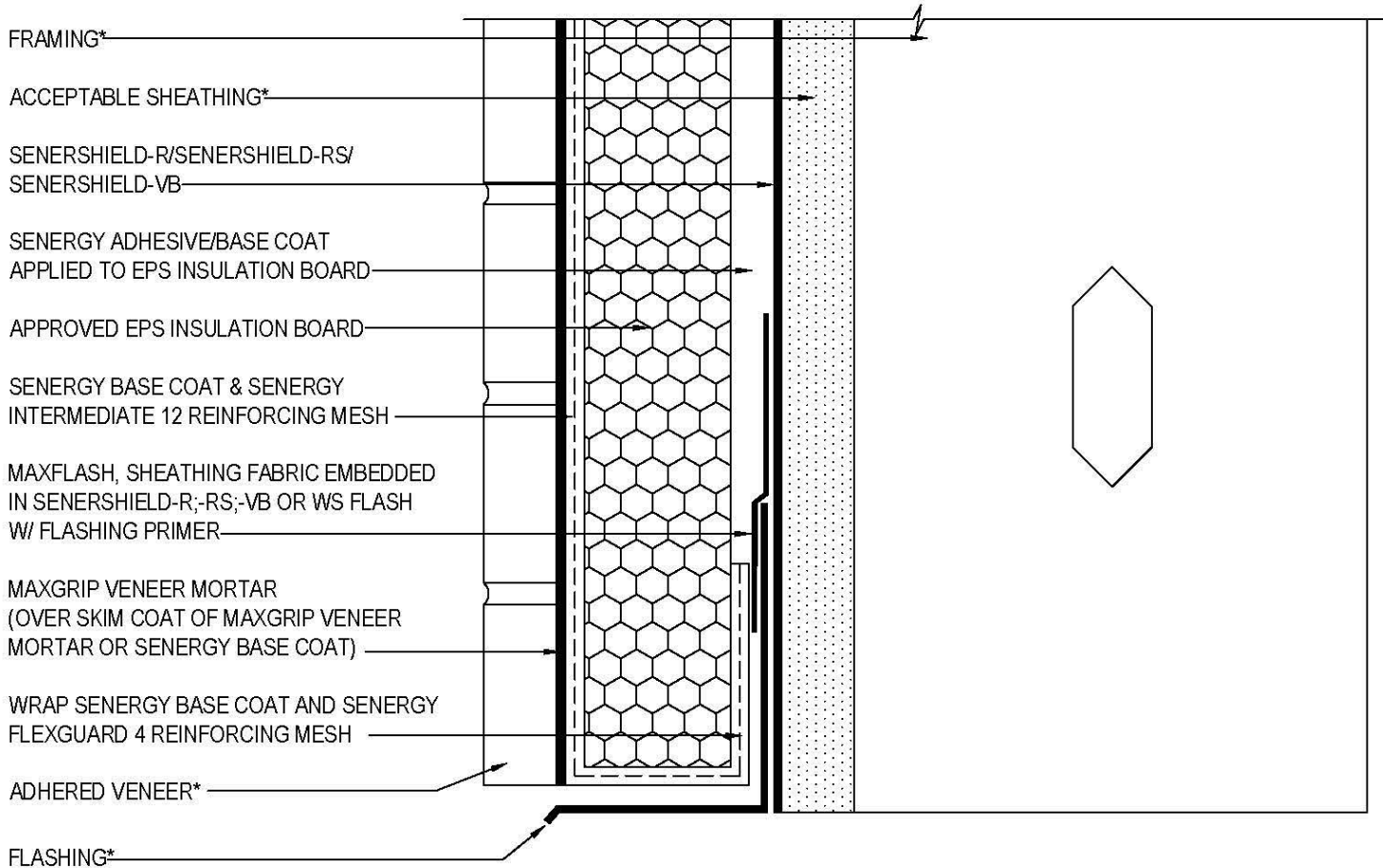
SENERFLEX CHANNELED ADHESIVE CI WITH MAXGRIP VENEER MORTAR

SCALE: NTS

01

Structure, substrates, flashing, sealant, and other items which are not part of the Senerflex Senerflex Channeled Adhesive CI with MaxGrip Veneer Mortar system are the responsibility of others. This detail is subject to change without notice. BASF Corporation - Wall Systems accepts no liability for the end use of this detail. For conditions not shown, consult BASF Wall Systems for review of specific detail.

 **BASF**
We create chemistry



*BY OTHERS

TYPICAL APPLICATION

SENERFLEX CHANNELED ADHESIVE CI WITH MAXGRIP VENEER MORTAR

SCALE: NTS

02

Structure, substrates, flashing, sealant, and other items which are not part of the Senergy Senerflex Channeled Adhesive CI with MaxGrip Veneer Mortar system are the responsibility of others. This detail is subject to change without notice. BASF Corporation - Wall Systems accepts no liability for the end use of this detail. For conditions not shown, consult BASF Wall Systems for review of specific detail.

BASF
We create chemistry

FRAMING*

ACCEPTABLE SHEATHING*

SENERSHIELD-R/SENERSHIELD-RS/
SENERSHIELD-VB

SENERGY ADHESIVE/BASE COAT
APPLIED TO EPS INSULATION BOARD

APPROVED EPS INSULATION BOARD

MAXGRIP VENEER MORTAR
(OVER SKIM COAT OF MAXGRIP VENEER
MORTAR OR SENERGY BASE COAT)

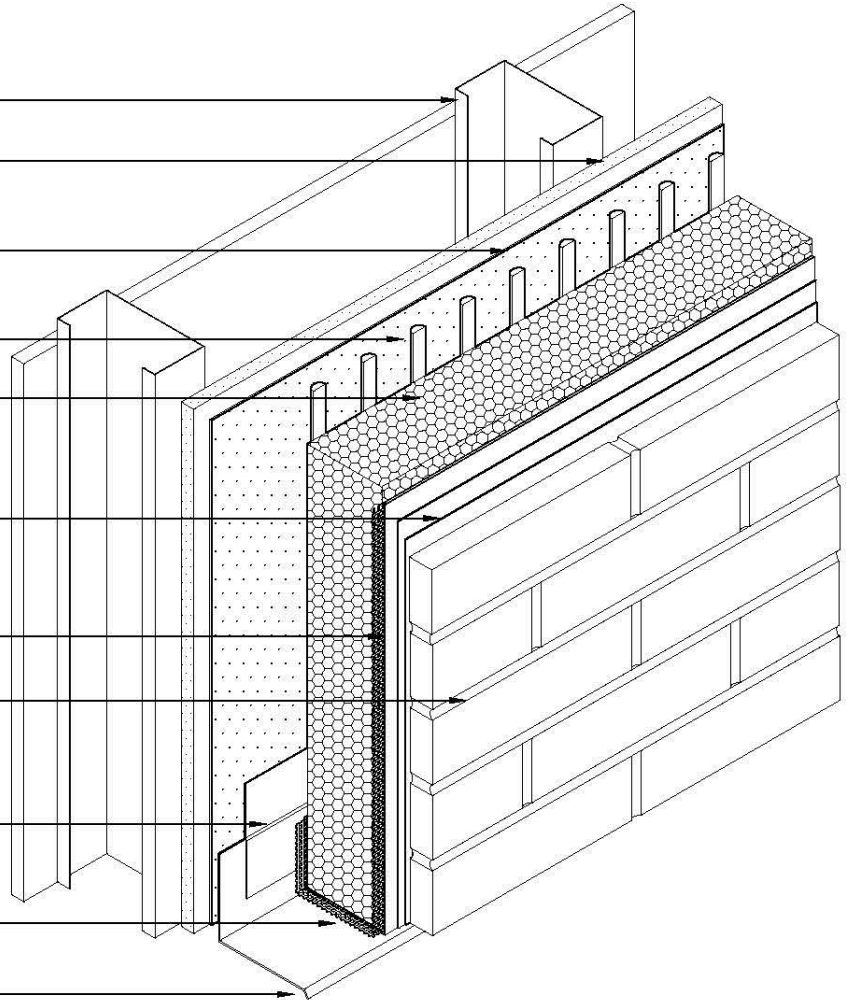
SENERGY BASE COAT &
SENERGY INTERMEDIATE 12
REINFORCING MESH

ADHERED VENEER*

MAXFLASH, SHEATHING FABRIC EMBEDDED
IN SENERSHIELD-R;-RS;-VB OR WS FLASH
W/ FLASHING PRIMER

WRAP SENERGY BASE COAT AND SENERGY
FLEXGUARD 4 REINFORCING MESH

FLASHING*



*BY OTHERS

TYPICAL ISOMETRIC VIEW

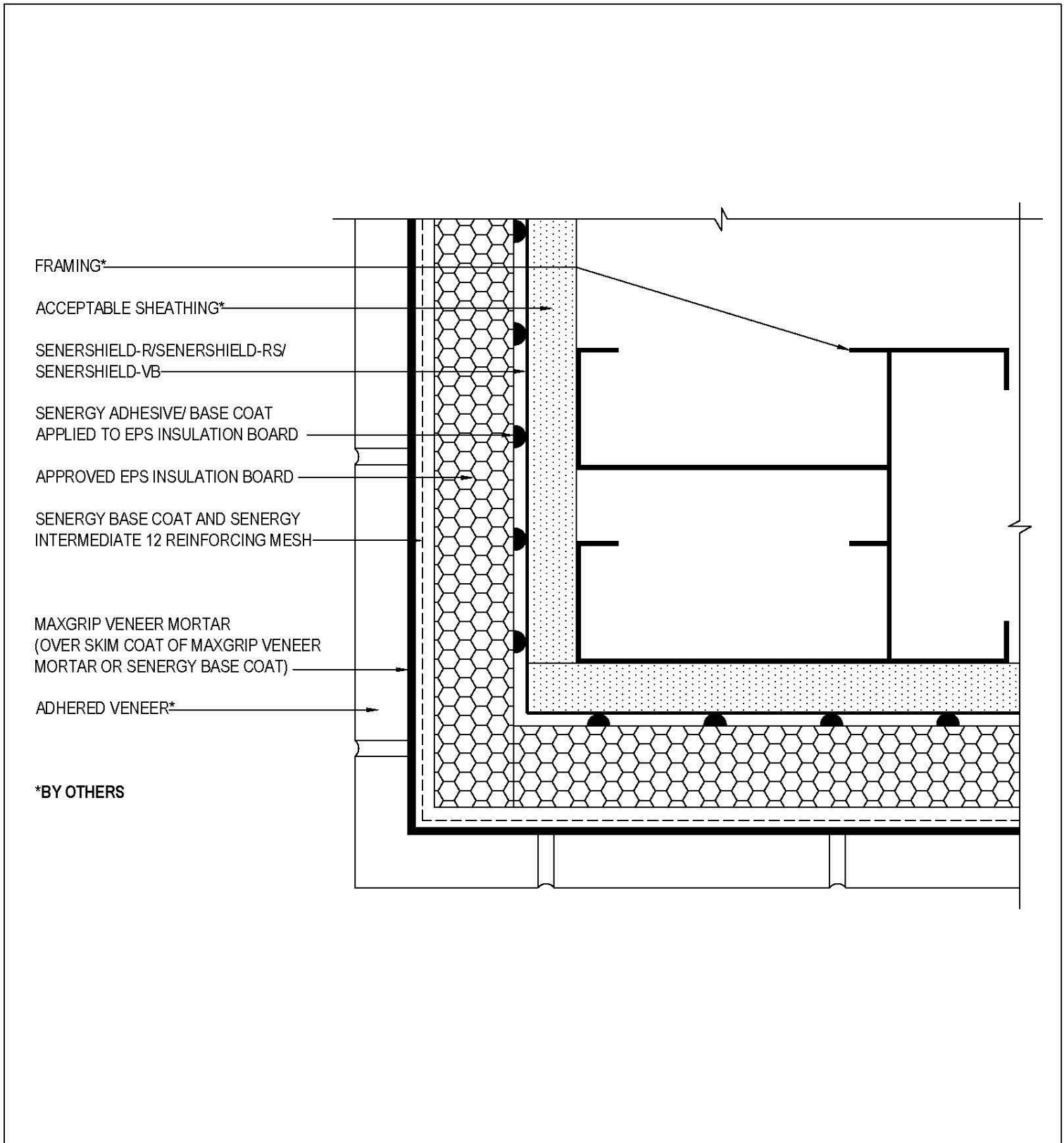
SENERFLEX CHANNELED ADHESIVE CI WITH MAXGRIP VENEER MORTAR

SCALE: NTS

03

Structure, substrates, flashing, sealant, and other items which are not part of the Senergy Senerflex Channeled Adhesive CI with MaxGrip Veneer Mortar system are the responsibility of others. This detail is subject to change without notice. BASF Corporation - Wall Systems accepts no liability for the end use of this detail. For conditions not shown, consult BASF Wall Systems for review of specific detail.

BASF
We create chemistry



TYPICAL OUTSIDE CORNER APPLICATION

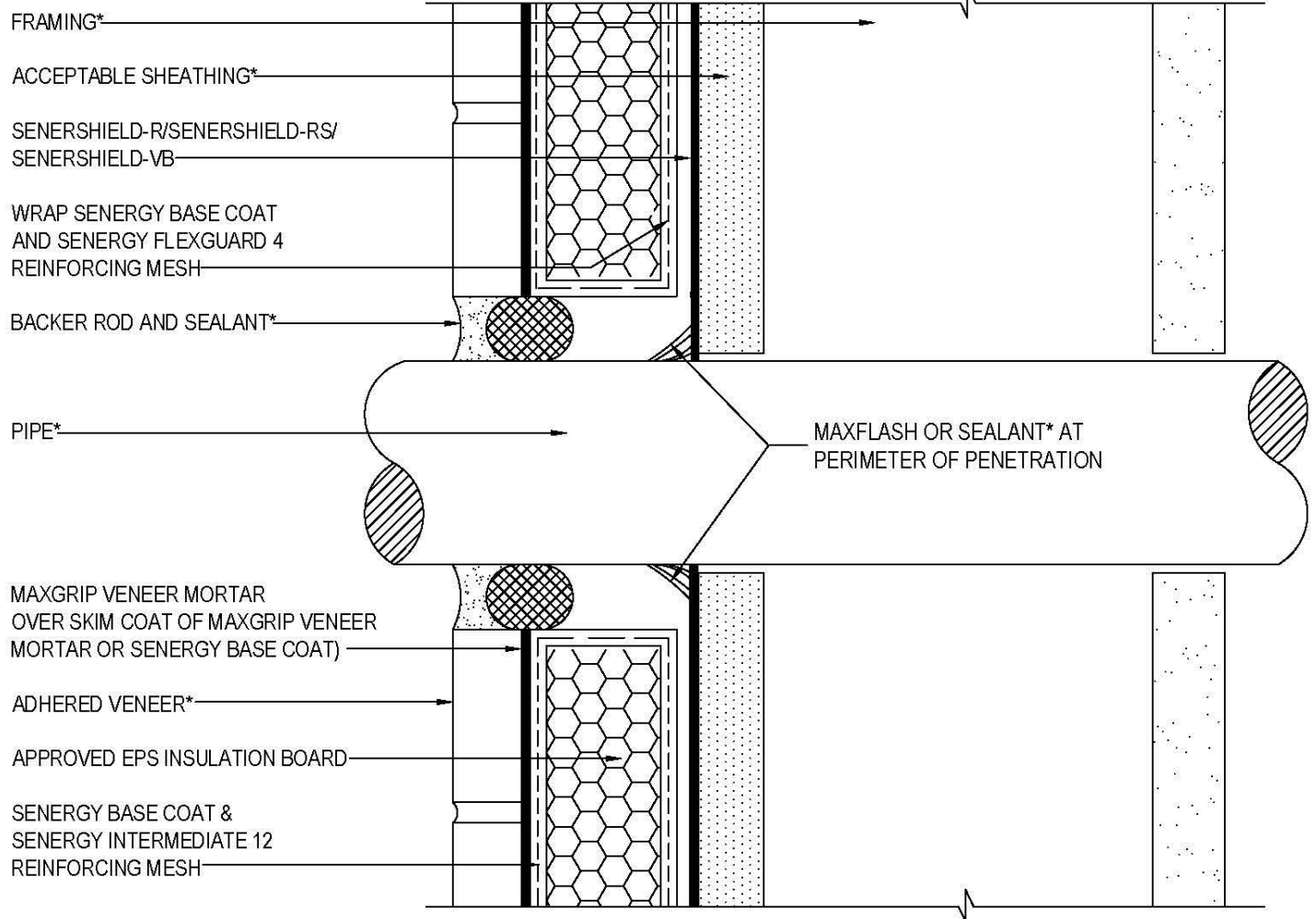
SENERFLEX CHANNELED ADHESIVE CI WITH MAXGRIP VENEER MORTAR

SCALE: NTS

04

Structure, substrates, flashing, sealant, and other items which are not part of the Senerflex Channeled Adhesive CI with MaxGrip Veneer Mortar system are the responsibility of others. This detail is subject to change without notice. BASF Corporation - Wall Systems accepts no liability for the end use of this detail. For conditions not shown, consult BASF Wall Systems for review of specific detail.

BASF
We create chemistry



*BY OTHERS

TYPICAL PIPE PENETRATION

SENERFLEX CHANNELED ADHESIVE CI WITH MAXGRIP VENEER MORTAR

SCALE: NTS

05

Structure, substrates, flashing, sealant, and other items which are not part of the Senerflex Channeled Adhesive CI with MaxGrip Veneer Mortar system are the responsibility of others. This detail is subject to change without notice. BASF Corporation - Wall Systems accepts no liability for the end use of this detail. For conditions not shown, consult BASF Wall Systems for review of specific detail.

BASF
We create chemistry

FRAMING*

ACCEPTABLE SHEATHING*

SENERSHIELD-R/SENERSHIELD-RS/
SENERSHIELD-VB

SENERGY BASE COAT AND SENERGY
INTERMEDIATE 12 REINFORCING MESH

WRAP SENERGY BASE COAT AND SENERGY
FLEXGUARD 4 REINFORCING MESH

ADHERED VENEER*

BACKER ROD AND SEALANT
(WIDTH PER DESIGN)*

WS FLASH W/ FLASHING PRIMER

MAXGRIP VENEER MORTAR
(OVER SKIM COAT OF MAXGRIP VENEER
MORTAR OR SENERGY BASE COAT)

APPROVED EPS INSULATION BOARD

SENERGY ADHESIVE/BASE COAT
APPLIED TO EPS INSULATION BOARD

*BY OTHERS

TYPICAL EXPANSION JOINT DETAIL (PLAN VIEW)

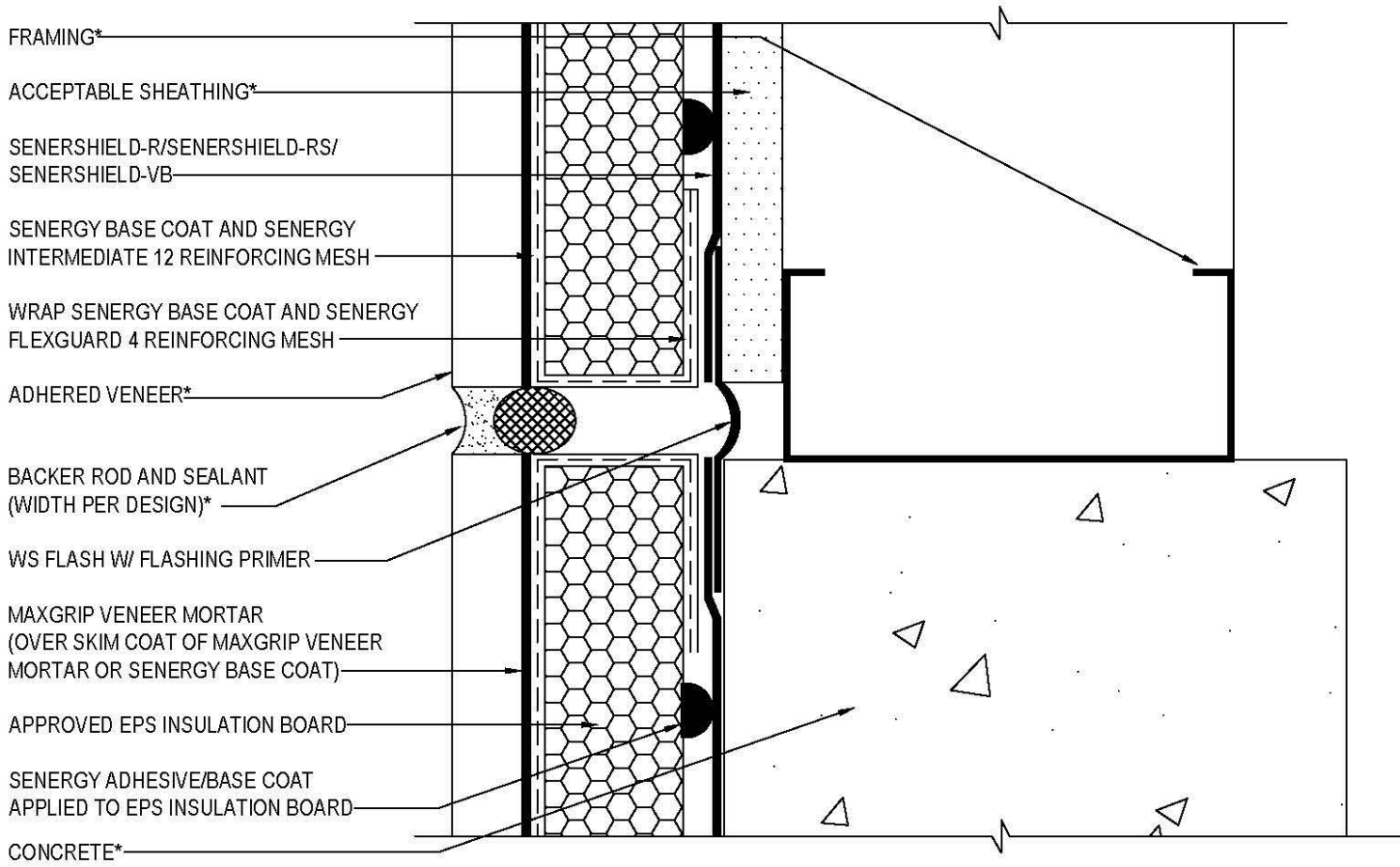
SENERFLEX CHANNELED ADHESIVE CI WITH MAXGRIP VENEER MORTAR

SCALE: NTS

06

Structure, substrates, flashing, sealant, and other items which are not part of the Senergy Senerflex Channeled Adhesive CI with MaxGrip Veneer Mortar system are the responsibility of others. This detail is subject to change without notice. BASF Corporation - Wall Systems accepts no liability for the end use of this detail. For conditions not shown, consult BASF Wall Systems for review of specific detail.

BASF
We create chemistry



*BY OTHERS

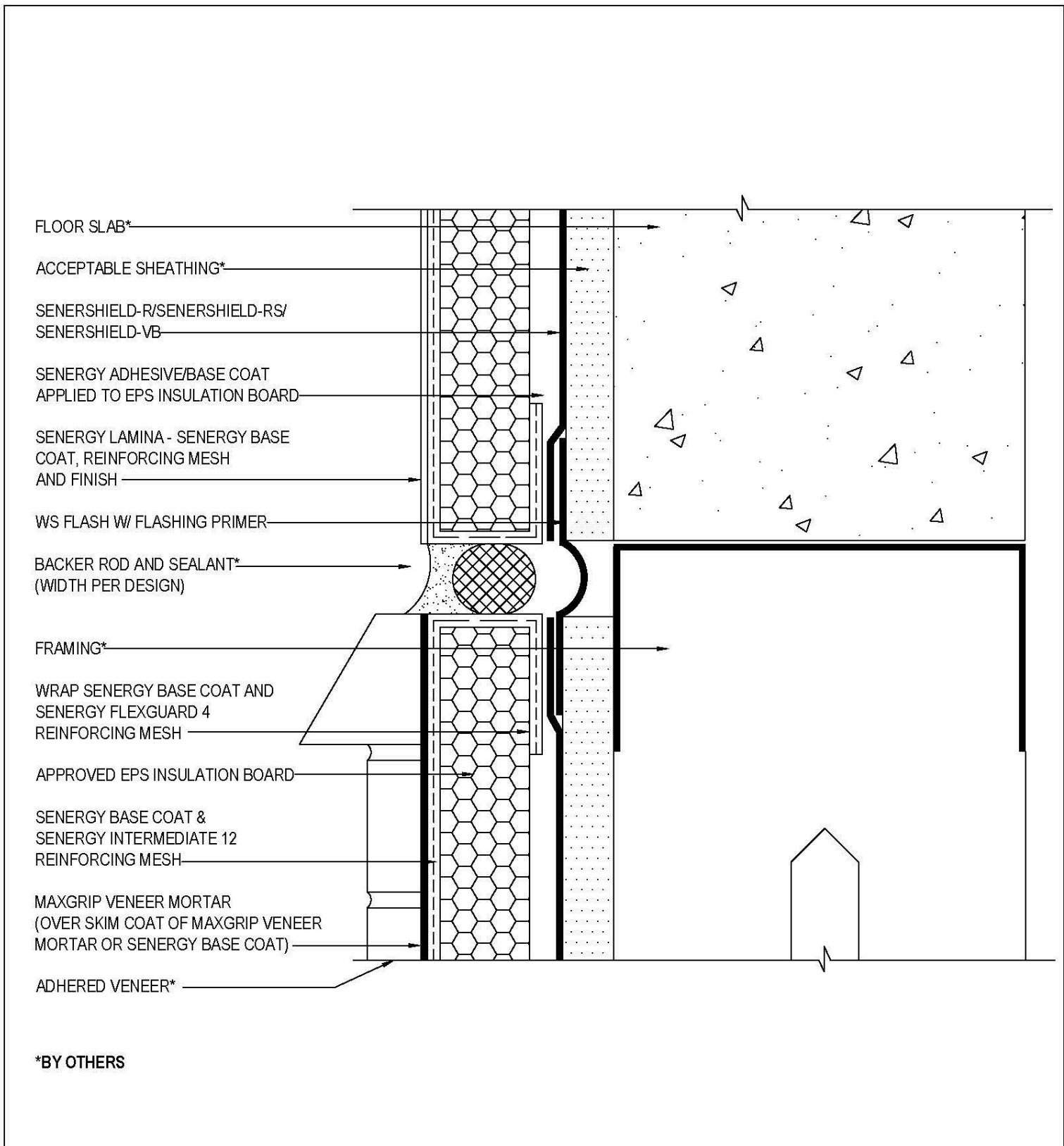
**TYPICAL EXPANSION JOINT AT CHANGE IN SUBSTRATE (PLAN VIEW)
SENERFLEX CHanneled ADHESIVE CI WITH MAXGRIP VENEER MORTAR**

SCALE: NTS

07

Structure, substrates, flashing, sealant, and other items which are not part of the Senergy Senerflex Channeled Adhesive CI with MaxGrip Veneer Mortar system are the responsibility of others. This detail is subject to change without notice. BASF Corporation - Wall Systems accepts no liability for the end use of this detail. For conditions not shown, consult BASF Wall Systems for review of specific detail.





TYPICAL EXPANSION JOINT DETAIL AT FLOORLINE

SENERFLEX CHANNELED ADHESIVE CI WITH MAXGRIP VENEER MORTAR

SCALE: NTS

08

Structure, substrates, flashing, sealant, and other items which are not part of the Senergy Senerflex Channeled Adhesive CI with MaxGrip Veneer Mortar system are the responsibility of others. This detail is subject to change without notice. BASF Corporation - Wall Systems accepts no liability for the end use of this detail. For conditions not shown, consult BASF Wall Systems for review of specific detail.

BASF
We create chemistry

FLOOR SLAB*

ACCEPTABLE SHEATHING*

SENERSHIELD-R/SENERSHIELD-RS/
SENERSHIELD-VB

APPROVED EPS INSULATION BOARD

MAXFLASH, SHEATHING FABRIC
EMBEDDED IN SENERSHIELD-R;-RS;-VB,
OR WS FLASH W/ FLASHING PRIMER

SENERGY LAMINA - SENERGY BASE
COAT, REINFORCING MESH AND FINISH

WS FLASH WITH FLASHING PRIMER

FLASHING*

BACKER ROD & SEALANT
(WIDTH PER DESIGN)*

WRAP SENERGY BASE COAT
AND SENERGY FLEXGUARD 4
REINFORCING MESH

MAXGRIP VENEER MORTAR
(OVER SKIM COAT OF MAXGRIP VENEER
MORTAR OR SENERGY BASE COAT)

ADHERED VENEER*

SENERGY BASE COAT & SENERGY
INTERMEDIATE 12 REINFORCING MESH

SENERGY ADHESIVE/BASE COAT
APPLIED TO EPS INSULATION BOARD

*BY OTHERS

TYPICAL DRAINAGE AT FLOORLINE

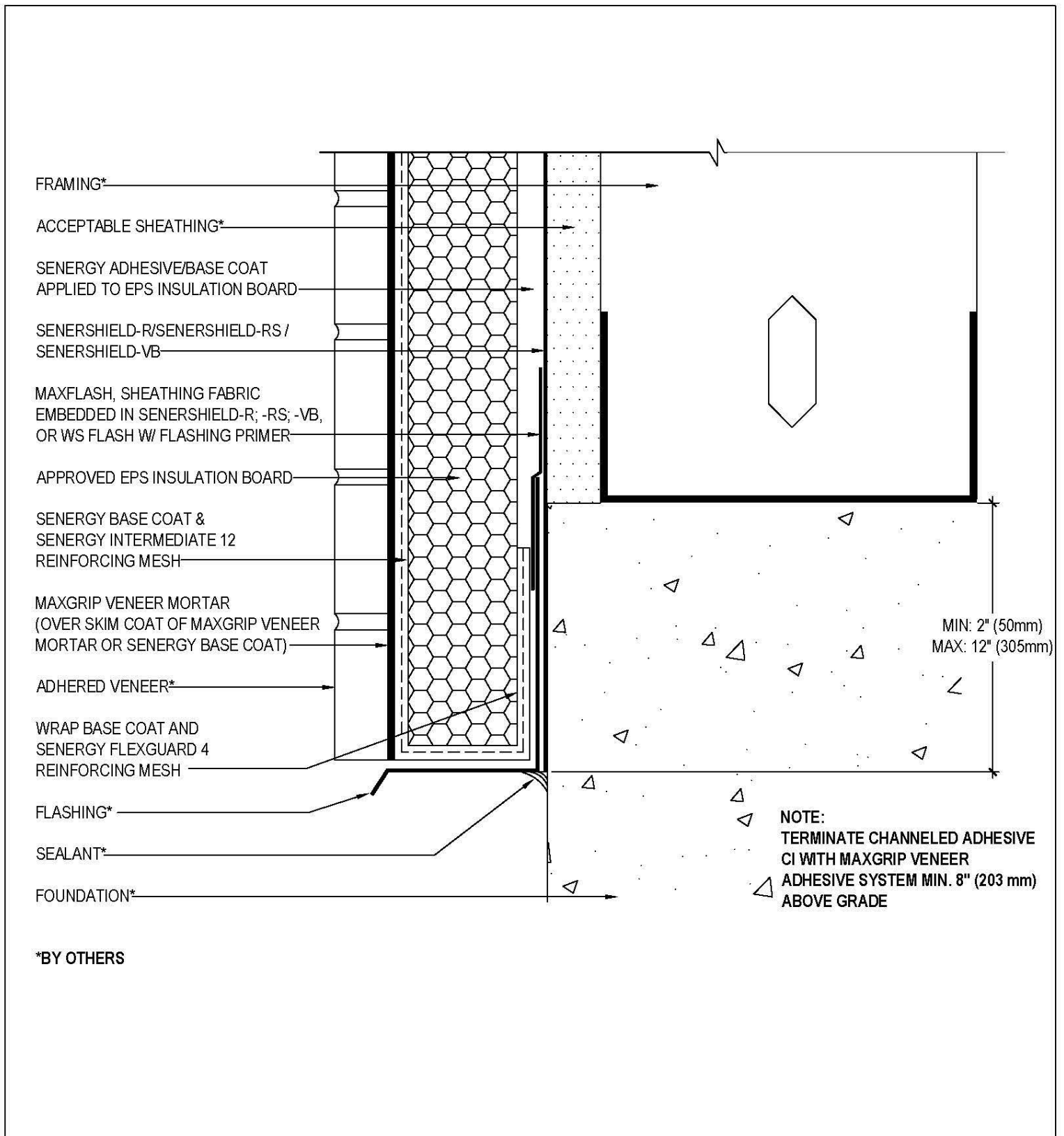
SENERFLEX CHanneled Adhesive CI WITH MAXGRIP VENEER MORTAR

SCALE: NTS

09

Structure, substrates, flashing, sealant, and other items which are not part of the Senergy Seneflex Channeled Adhesive CI with MaxGrip Veneer Mortar system are the responsibility of others. This detail is subject to change without notice. BASF Corporation - Wall Systems accepts no liability for the end use of this detail. For conditions not shown, consult BASF Wall Systems for review of specific detail.

BASF
We create chemistry



TYPICAL TERMINATION AT FOUNDATION

SENERFLEX CHANNELED ADHESIVE CI WITH MAXGRIP VENEER MORTAR

SCALE: NTS

10

Structure, substrates, flashing, sealant, and other items which are not part of the Senergy Senerflex Channelled Adhesive CI with MaxGrip Veneer Mortar system are the responsibility of others. This detail is subject to change without notice. BASF Corporation - Wall Systems accepts no liability for the end use of this detail. For conditions not shown, consult BASF Wall Systems for review of specific detail.

BASF
We create chemistry

FRAMING*

ACCEPTABLE SHEATHING*

SENERGY ADHESIVE/BASE COAT
APPLIED TO EPS INSULATION BOARD

SENERSHIELD-R/SENERSHIELD-RS/
SENERSHIELD-VB

APPROVED EPS INSULATION BOARD

SENERGY BASE COAT &
SENERGY INTERMEDIATE 12
REINFORCING MESH

WS FLASH W/ FLASHING PRIMER

MAXGRIP VENEER MORTAR
(OVER SKIM COAT OF MAXGRIP VENEER
MORTAR OR SENERGY BASE COAT)

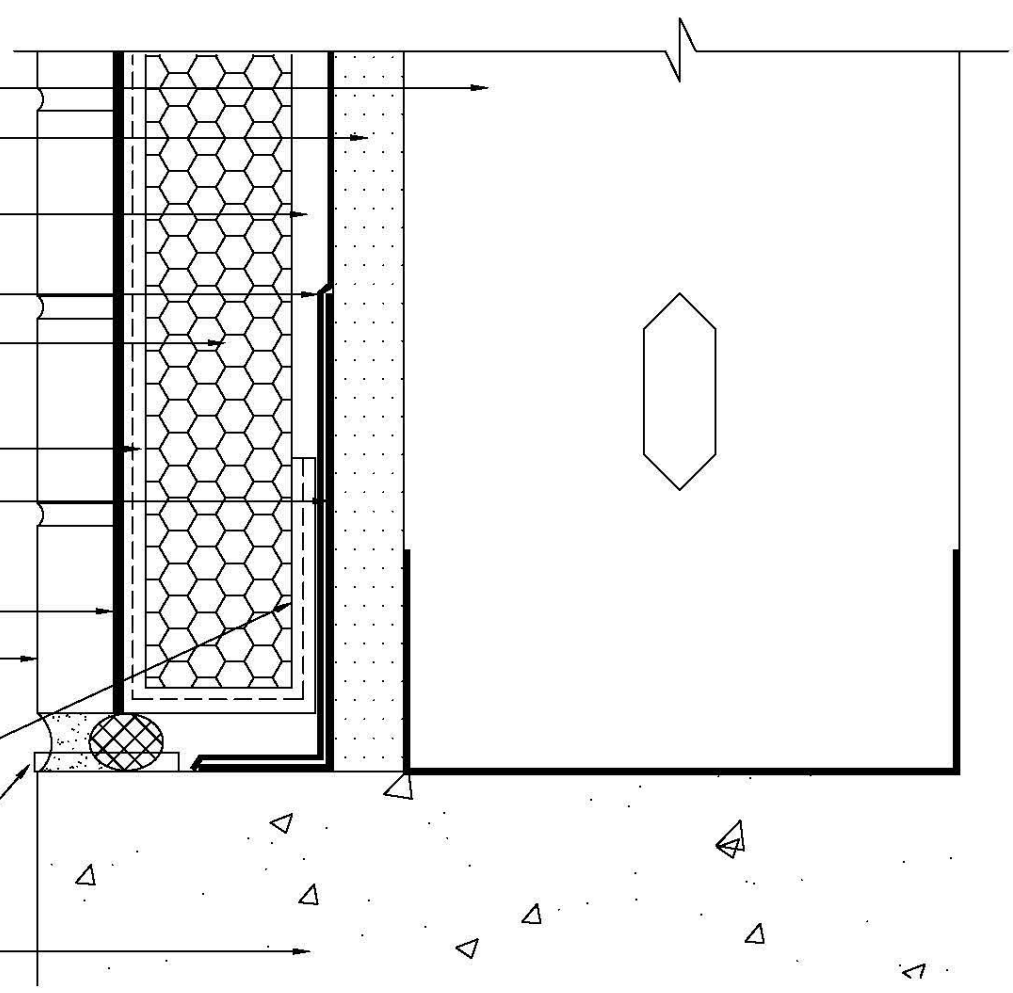
ADHERED VENEER*

WRAP BASE COAT AND
SENERGY FLEXGUARD 4
REINFORCING MESH

BACKER ROD AND SEALANT
W/ WEEPS AT MAX. 24" O.C.
(WIDTH PER DESIGN)*

FOUNDATION*

*BY OTHERS



TYPICAL TERMINATION AT FOUNDATION (FLUSH)

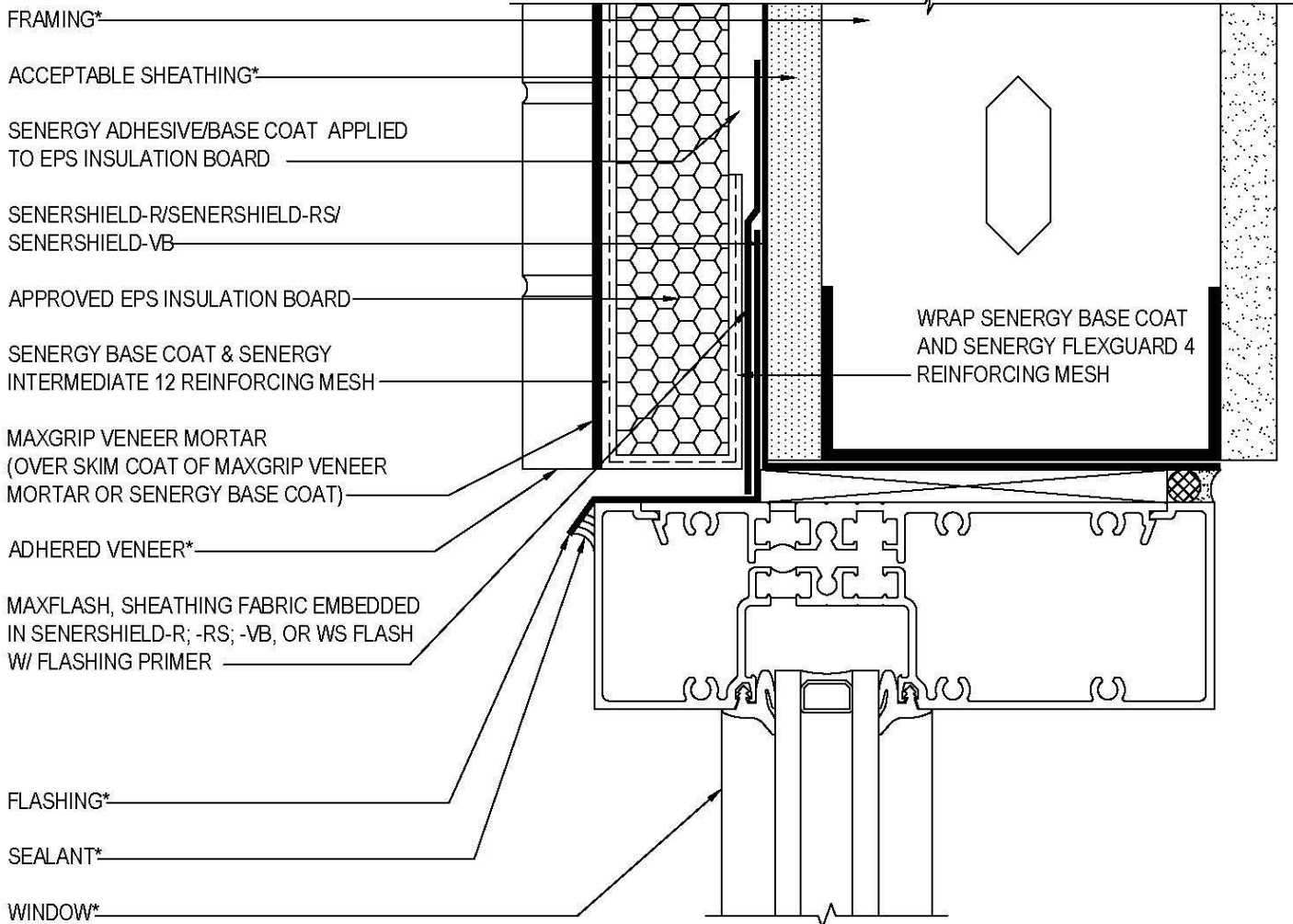
SENERFLEX CHanneLED ADHESIVE CI WITH MAXGRIP VENEER MORTAR

SCALE: NTS

11

Structure, substrates, flashing, sealant, and other items which are not part of the Senergy Senerflex Channeled Adhesive CI with MaxGrip Veneer Mortar system are the responsibility of others. This detail is subject to change without notice. BASF Corporation - Wall Systems accepts no liability for the end use of this detail. For conditions not shown, consult BASF Wall Systems for review of specific detail.

BASF
We create chemistry



*BY OTHERS

NOTE: WRAP MAXFLASH, SHEATHING FABRIC EMBEDDED IN SENERSHIELD-R; -RS; -VB OR WS FLASH W/ FLASHING PRIMER INTO ROUGH OPENING ON HEAD IF INTENDED TO BE AN AIR BARRIER.

TYPICAL WINDOW HEAD (FLUSH)

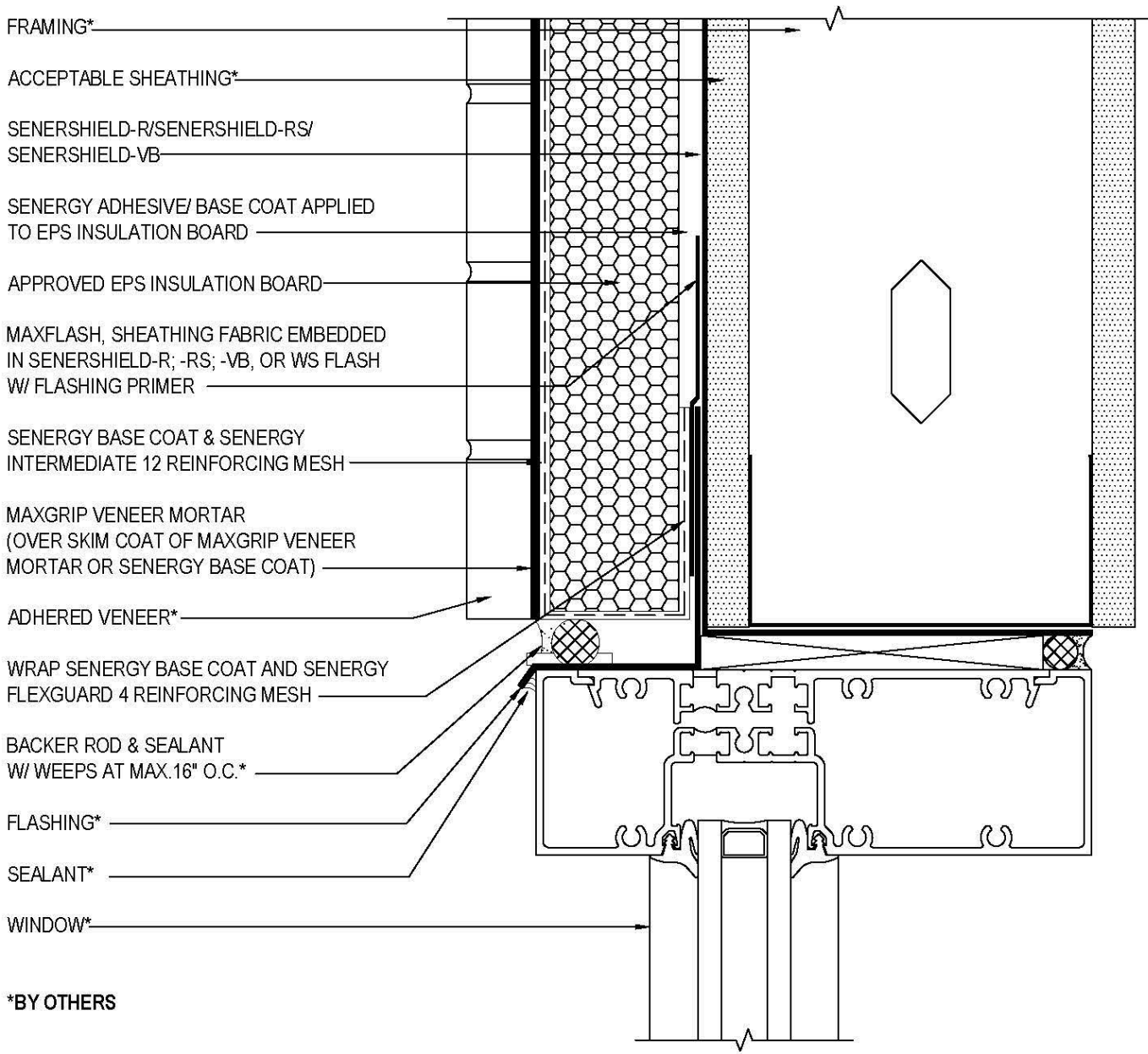
SENERFLEX CHanneled ADHESIVE CI WITH MAXGRIP VENEER MORTAR

SCALE: NTS

12

Structure, substrates, flashing, sealant, and other items which are not part of the Senerflex Channeled Adhesive CI with MaxGrip Veneer Mortar system are the responsibility of others. This detail is subject to change without notice. BASF Corporation - Wall Systems accepts no liability for the end use of this detail. For conditions not shown, consult BASF Wall Systems for review of specific detail.

BASF
We create chemistry



*BY OTHERS

NOTE: WRAP MAXFLASH, SHEATHING FABRIC EMBEDDED IN SENERSHIELD-R; -RS; -VB OR WS FLASH W/ FLASHING PRIMER INTO ROUGH OPENING ON HEAD IF ALSO INTENDED TO BE AN AIR BARRIER.

TYPICAL WINDOW HEAD (FLUSH) WITH WEEPS

SENERFLEX CHANNELED ADHESIVE CI WITH MAXGRIP VENEER MORTAR

SCALE: NTS

13

Structure, substrates, flashing, sealant, and other items which are not part of the Senergy Senereflex Channeled Adhesive CI with MaxGrip Veneer Mortar system are the responsibility of others. This detail is subject to change without notice. BASF Corporation - Wall Systems accepts no liability for the end use of this detail. For conditions not shown, consult BASF Wall Systems for review of specific detail.



FRAMING*

ACCEPTABLE SHEATHING*

SENERSHIELD-R/SENERSHIELD-RS/
SENERSHIELD-VB

SENERGY ADHESIVE/ BASE COAT APPLIED TO
EPS INSULATION BOARD

APPROVED EPS INSULATION BOARD

MAXFLASH, SHEATHING FABRIC EMBEDDED IN
SENERSHIELD-R; -RS; -VB, OR WS FLASH W/
FLASHING PRIMER

DIVERTER TRACK*

SENERGY BASE COAT & SENERGY
INTERMEDIATE 12 REINFORCING MESH

MAXGRIP VENEER MORTAR
(OVER SKIM COAT OF MAXGRIP VENEER
MORTAR OR SENERGY BASE COAT)

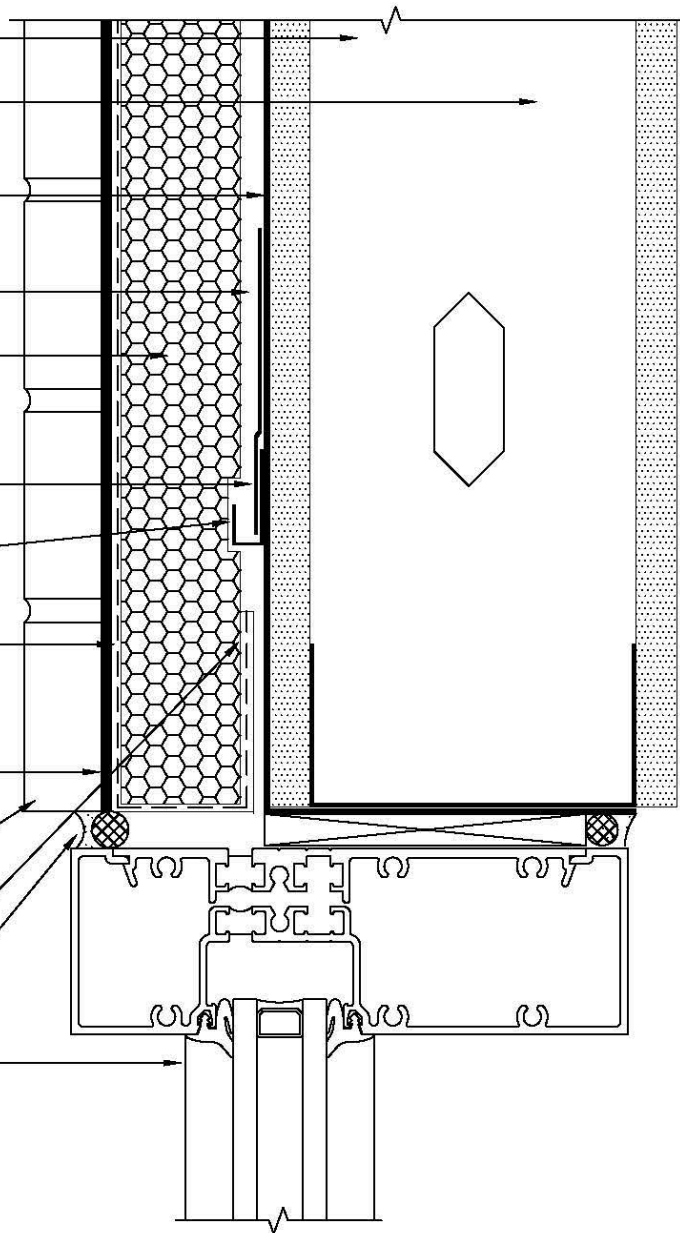
ADHERED VENEER*

WRAP SENERGY BASE COAT AND SENERGY
FLEXGUARD 4 REINFORCING MESH

BACKER ROD & SEALANT*

WINDOW*

*BY OTHERS



NOTE: WRAP MAXFLASH, SHEATHING FABRIC EMBEDDED
IN SENERSHIELD-R; -RS; -VB OR WS FLASH W/
FLASHING PRIMER INTO ROUGH OPENING ON
HEAD IF ALSO INTENDED TO BE AN AIR BARRIER.

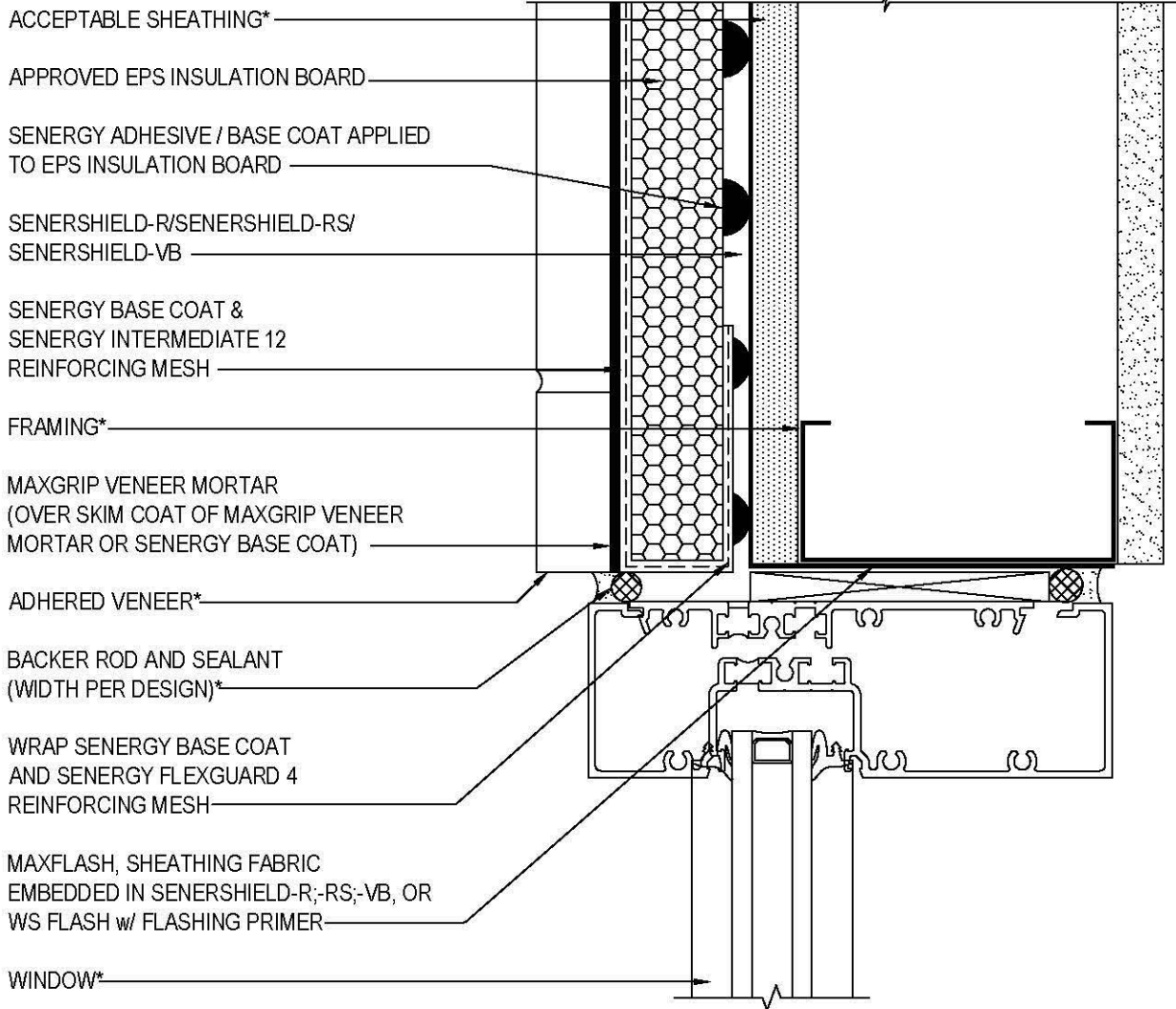
TYPICAL WINDOW HEAD (FLUSH) WITH DIVERTER TRACK SENERFLEX CHANNELED ADHESIVE CI WITH MAXGRIP VENEER MORTAR

SCALE: NTS

14

Structure, substrates, flashing, sealant, and other items which are not part of the Senergy Senerflex Channeled Adhesive CI with MaxGrip Veneer Mortar system are the responsibility of others. This detail is subject to change without notice. BASF Corporation - Wall Systems accepts no liability for the end use of this detail. For conditions not shown, consult BASF Wall Systems for review of specific detail.

BASF
We create chemistry



*BY OTHERS

TYPICAL WINDOW JAMB (FLUSH)

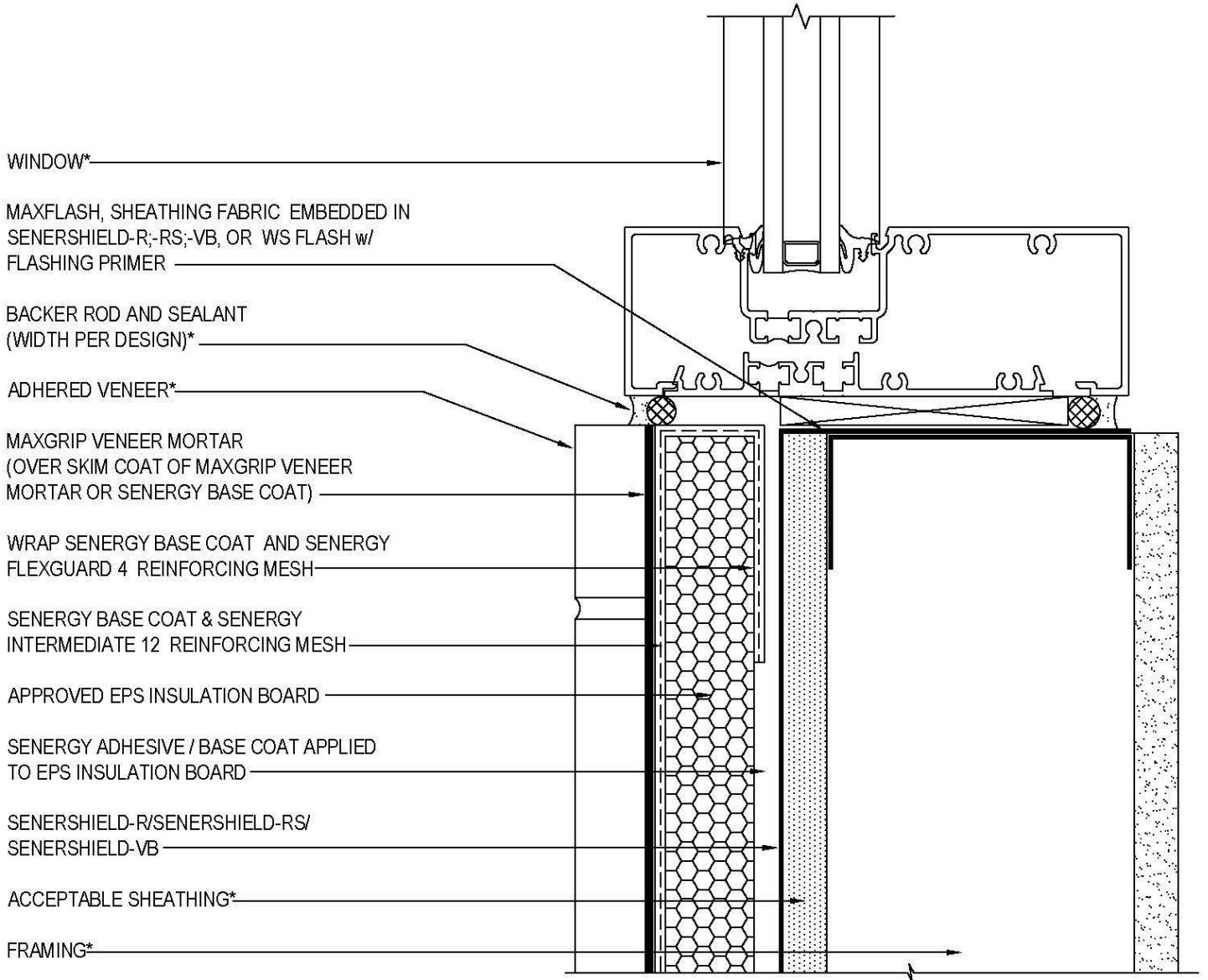
SENERFLEX CHanneled ADHESIVE CI WITH MAXGRIP VENEER MORTAR

SCALE: NTS

15

Structure, substrates, flashing, sealant, and other items which are not part of the Senergy Senerflex Channeled Adhesive CI with MaxGrip Veneer Mortar system are the responsibility of others. This detail is subject to change without notice. BASF Corporation - Wall Systems accepts no liability for the end use of this detail. For conditions not shown, consult BASF Wall Systems for review of specific detail.

BASF
We create chemistry



*BY OTHERS

TYPICAL WINDOW SILL (FLUSH)

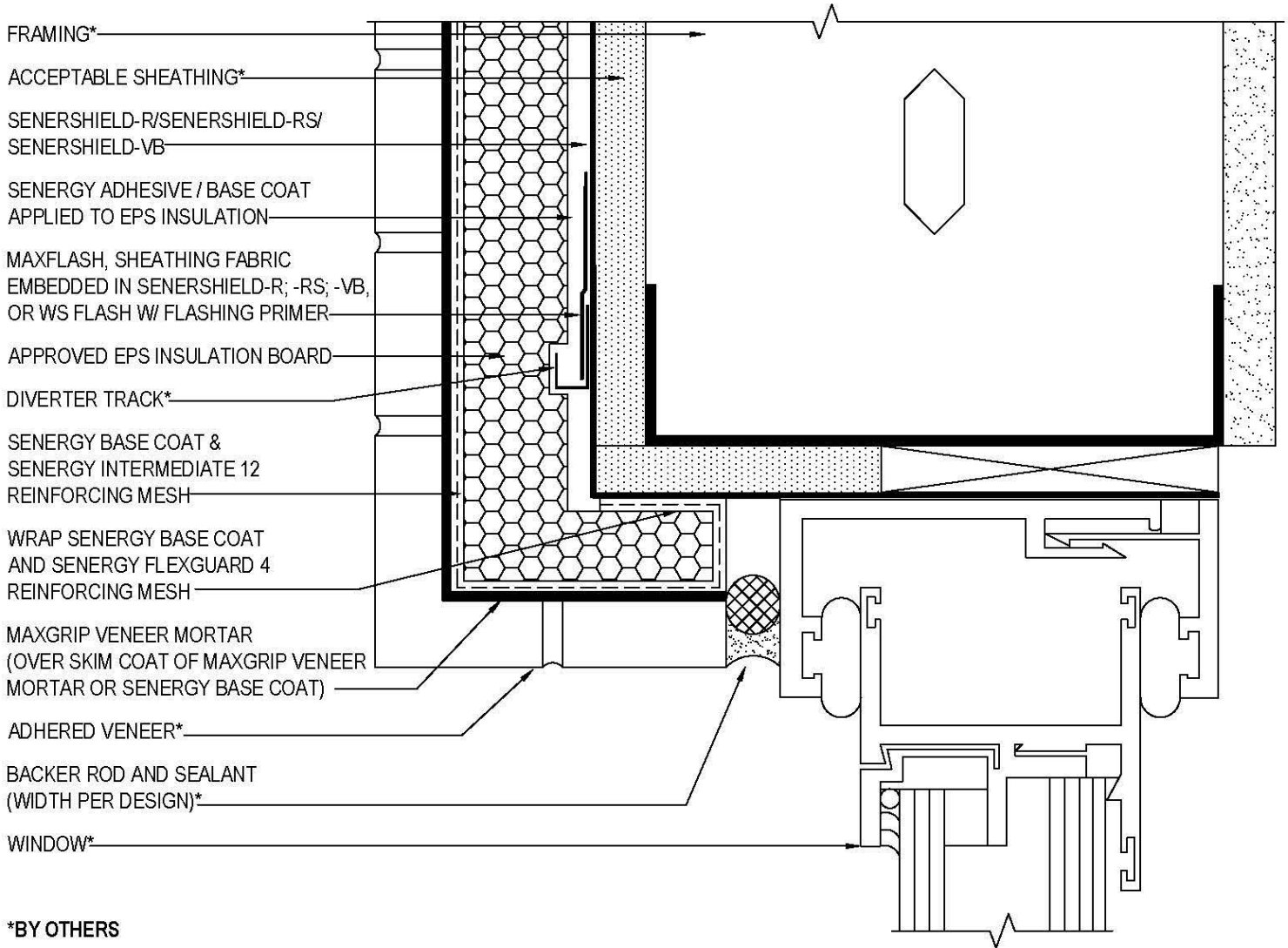
SENERFLEX CHANNELED ADHESIVE CI WITH MAXGRIP VENEER MORTAR

SCALE: NTS

16

Structure, substrates, flashing, sealant, and other items which are not part of the Senerflex Channeled Adhesive CI with MaxGrip Veneer Mortar system are the responsibility of others. This detail is subject to change without notice. BASF Corporation - Wall Systems accepts no liability for the end use of this detail. For conditions not shown, consult BASF Wall Systems for review of specific detail.

BASF
We create chemistry



NOTE: WRAP MAXFLASH, SHEATHING FABRIC EMBEDDED IN SENERSHIELD-R; -RS; -VB OR WS FLASH W/ FLASHING PRIMER INTO ROUGH OPENING ON HEAD IF INTENDED TO BE AN AIR BARRIER.

TYPICAL WINDOW HEAD (RECESSED)

SENERFLEX CHANNELED ADHESIVE CI WITH MAXGRIP VENEER MORTAR

SCALE: NTS

17

Structure, substrates, flashing, sealant, and other items which are not part of the Senerflex Channeled Adhesive CI with MaxGrip Veneer Mortar system are the responsibility of others. This detail is subject to change without notice. BASF Corporation - Wall Systems accepts no liability for the end use of this detail. For conditions not shown, consult BASF Wall Systems for review of specific detail.

BASF
We create chemistry

FRAMING*

ACCEPTABLE SHEATHING*

SENERSHIELD-R/SENERSHIELD-RS/
SENERSHIELD-VB

APPROVED EPS INSULATION BOARD

SENERGY ADHESIVE / BASE COAT
APPLIED TO EPS INSULATION BOARD

SENERGY BASE COAT &
SENERGY INTERMEDIATE 12
REINFORCING MESH

MAXGRIP VENEER MORTAR
(OVER SKIM COAT OF MAXGRIP VENEER
MORTAR OR SENERGY BASE COAT)

ADHERED VENEER*

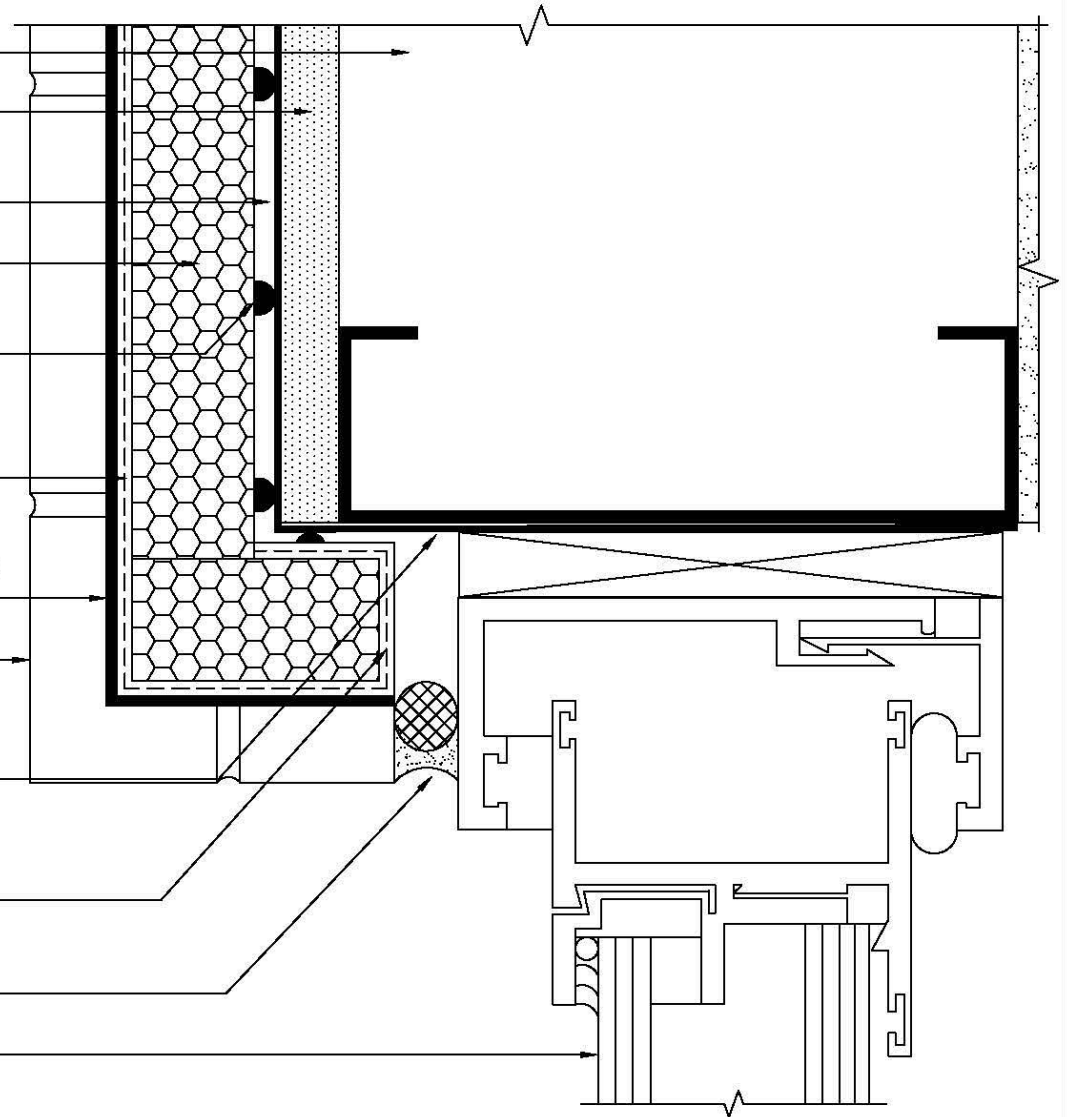
MAXFLASH, SHEATHING FABRIC
EMBEDDED IN SENERSHIELD-R;-RS;-VB,
OR WS FLASH w/ FLASHING PRIMER

WRAP SENERGY BASE COAT
AND SENERGY FLEXGUARD 4
REINFORCING MESH

BACKER ROD AND SEALANT
(WIDTH PER DESIGN)*

WINDOW*

*BY OTHERS



TYPICAL WINDOW JAMB (RECESSED)

SENERFLEX CHANNELED ADHESIVE CI WITH MAXGRIP VENEER MORTAR

SCALE: NTS

18

Structure, substrates, flashing, sealant, and other items which are not part of the Senerflex Channeled Adhesive CI with MaxGrip Veneer Mortar system are the responsibility of others. This detail is subject to change without notice. BASF Corporation - Wall Systems accepts no liability for the end use of this detail. For conditions not shown, consult BASF Wall Systems for review of specific detail.

BASF
We create chemistry

WINDOW*

MAXFLASH, SHEATHING FABRIC
EMBEDDED IN SENERSHIELD-R;-RS;-VB, OR
WS FLASH W/ FLASHING PRIMER

PAN FLASHING W/ END DAMS*

WRAP SENERGY BASE COAT
AND SENERGY FLEXGUARD 4
REINFORCING MESH

APPROVED EPS INSULATION BOARD

SENERGY BASE COAT &
SENERGY INTERMEDIATE 12
REINFORCING MESH

MAXGRIP VENEER MORTAR
(OVER SKIM COAT OF MAXGRIP VENEER
MORTAR OR SENERGY BASE COAT)

SEALANT*

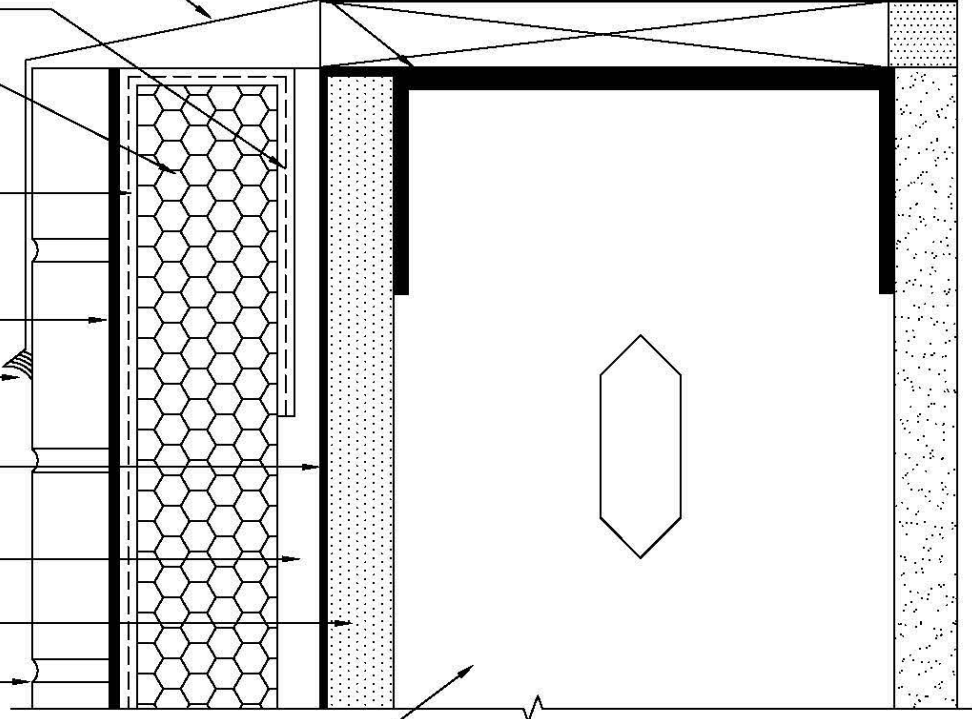
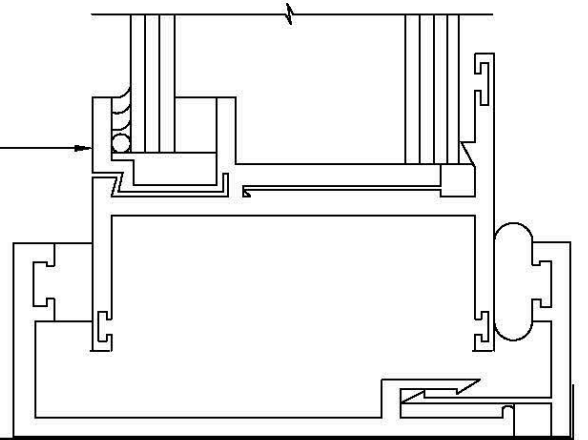
SENERSHIELD-R/SENERSHIELD-RS/
SENERSHIELD-VB

SENERGY ADHESIVE/ BASE COAT
APPLIED TO EPS INSULATION BOARD

ACCEPTABLE SHEATHING*

ADHERED VENEER*

FRAMING*



*BY OTHERS

NOTES:

- EXTEND FLASHING MIN 2" (50 mm) OVER CHanneled ADHESIVE CI WITH MAXGRIP VENEER MORTAR
- FLASHINGS ARE BY OTHERS AND SHALL BE AS PER DESIGN /CODE REQUIREMENT

TYPICAL WINDOW SILL DETAIL (RECESSED)

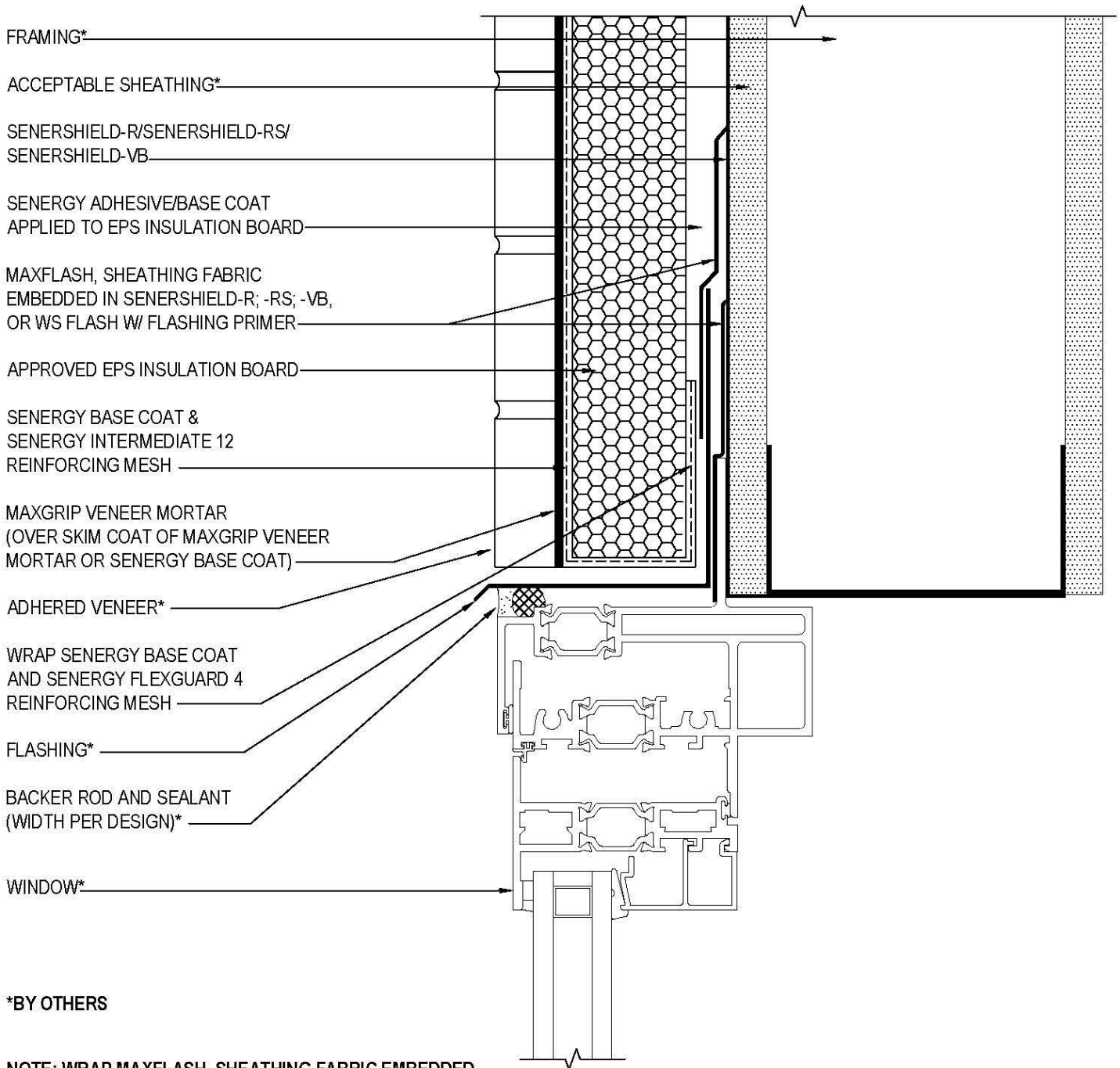
SENERFLEX CHanneled ADHESIVE CI WITH MAXGRIP VENEER MORTAR

SCALE: NTS

19

Structure, substrates, flashing, sealant, and other items which are not part of the Senerflex Senerflex Channeled Adhesive CI with MaxGrip Veneer Mortar system are the responsibility of others. This detail is subject to change without notice. BASF Corporation - Wall Systems accepts no liability for the end use of this detail. For conditions not shown, consult BASF Wall Systems for review of specific detail.

BASF
We create chemistry



NOTE: WRAP MAXFLASH, SHEATHING FABRIC EMBEDDED
IN SENERSHIELD-R; -RS; -VB OR WS FLASH W/
FLASHING PRIMER INTO ROUGH OPENING ON
HEAD IF INTENDED TO BE AN AIR BARRIER.

TYPICAL FLANGED WINDOW HEAD

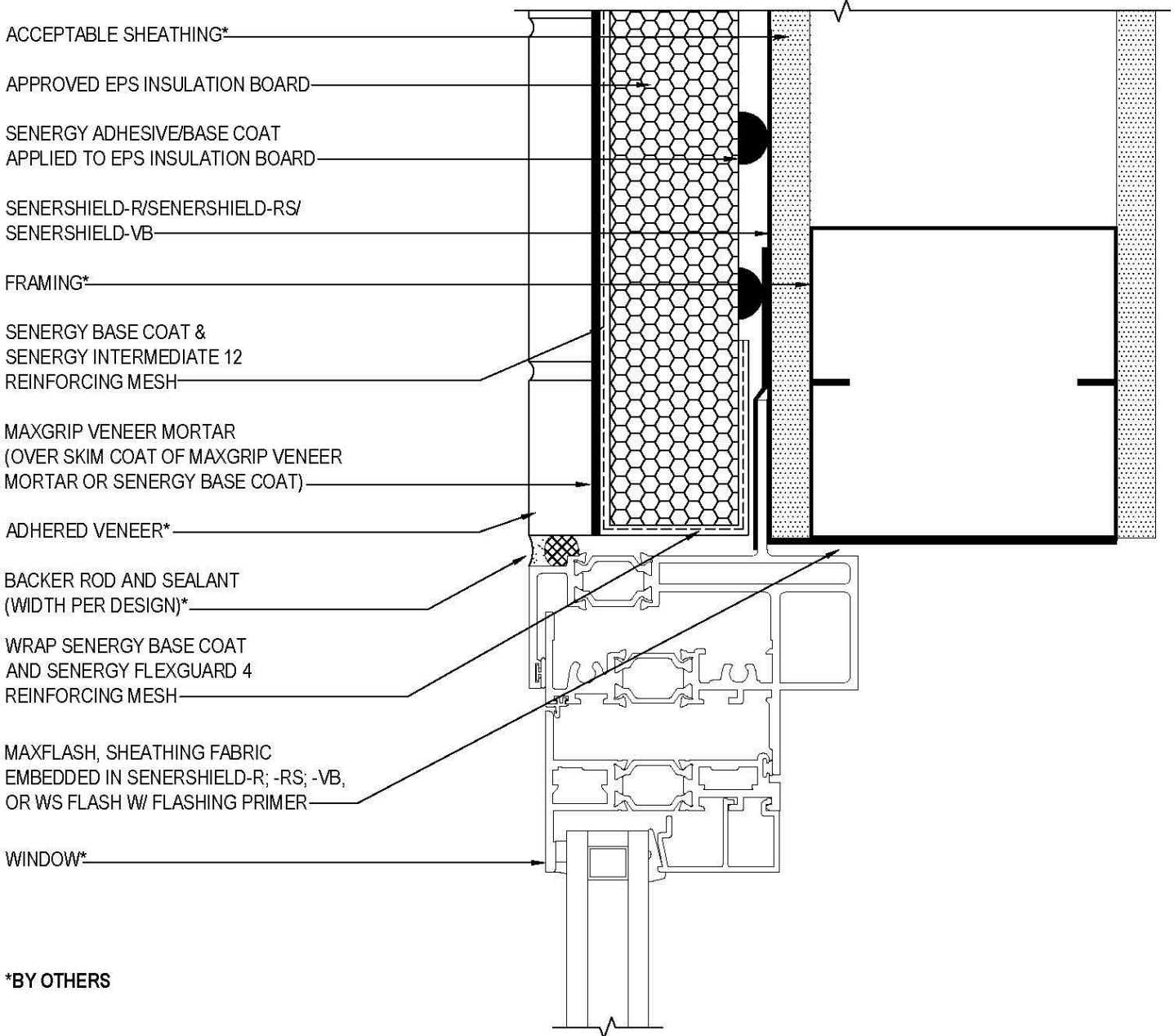
SENERFLEX CHanneled ADHESIVE CI WITH MAXGRIP VENEER MORTAR

SCALE: NTS

20

Structure, substrates, flashing, sealant, and other items which are not part of the Seneflex Channeled Adhesive CI with MaxGrip Veneer Mortar system are the responsibility of others. This detail is subject to change without notice. BASF Corporation - Wall Systems accepts no liability for the end use of this detail. For conditions not shown, consult BASF Wall Systems for review of specific detail.

BASF
We create chemistry



*BY OTHERS

TYPICAL FLANGED WINDOW JAMB

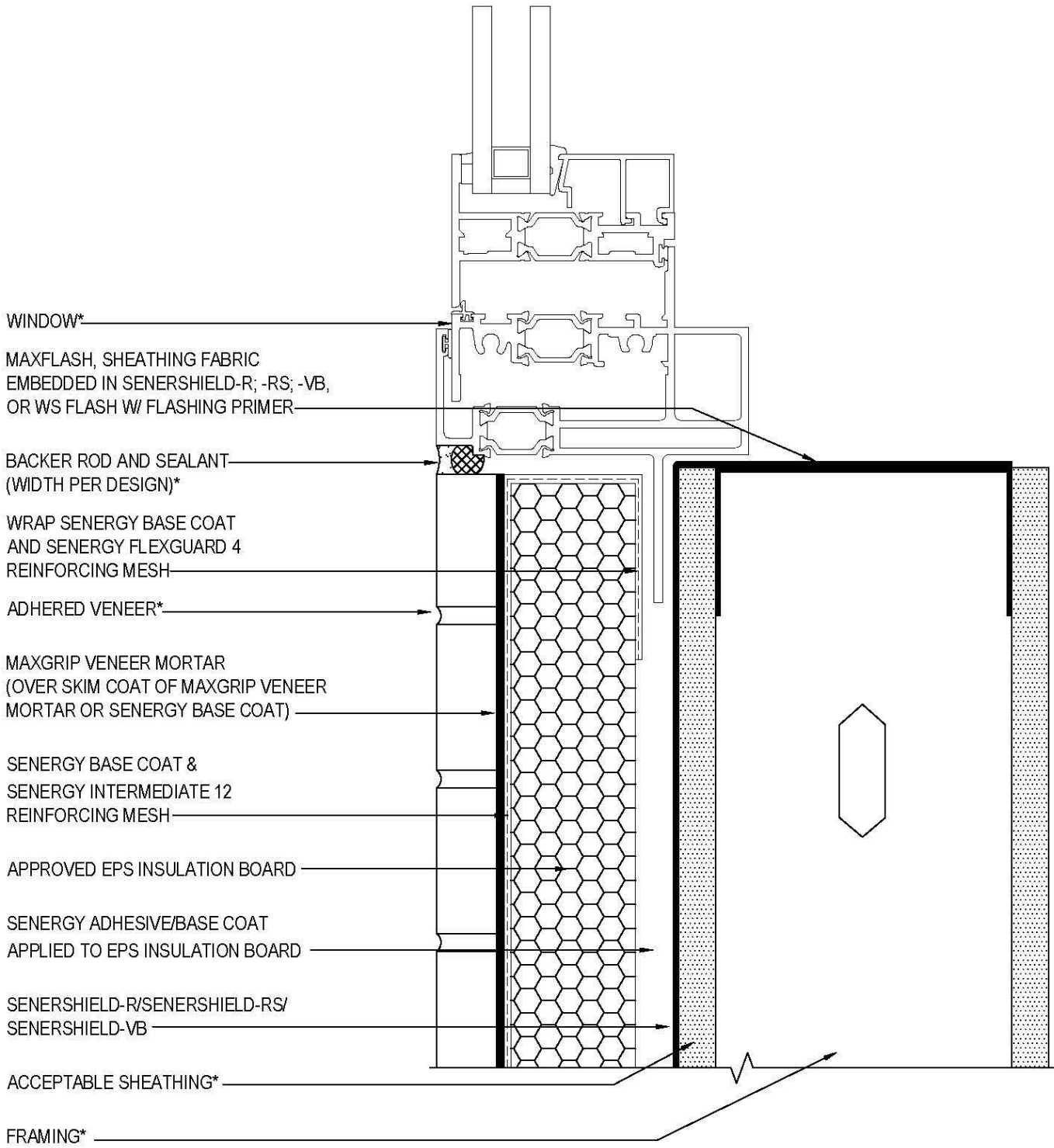
SENERFLEX CHANNELED ADHESIVE CI WITH MAXGRIP VENEER MORTAR

SCALE: NTS

21

Structure, substrates, flashing, sealant, and other items which are not part of the Senerflex Channeled Adhesive CI with MaxGrip Veneer Mortar system are the responsibility of others. This detail is subject to change without notice. BASF Corporation - Wall Systems accepts no liability for the end use of this detail. For conditions not shown, consult BASF Wall Systems for review of specific detail.





*BY OTHERS

TYPICAL FLANGED WINDOW SILL

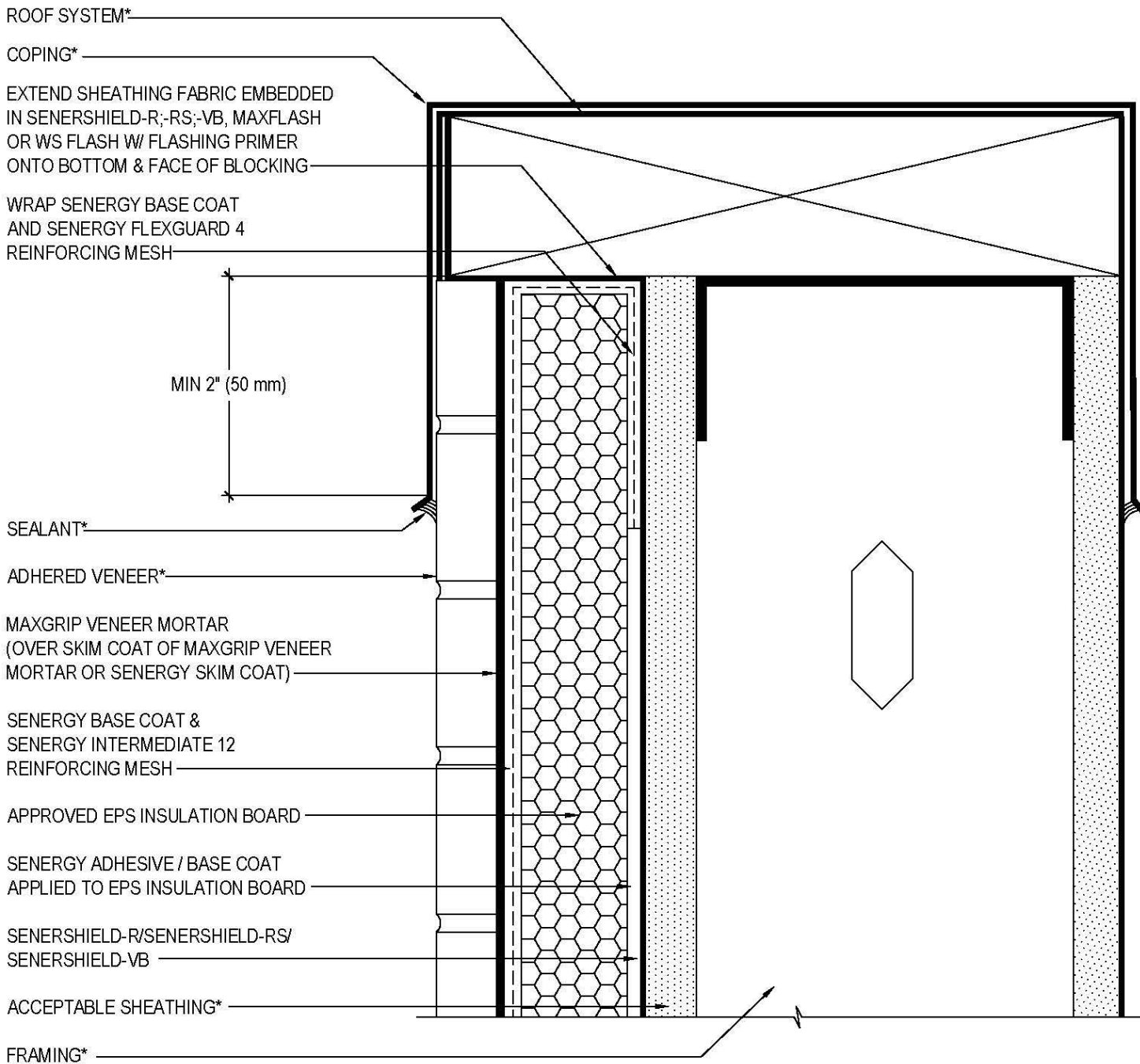
SENERFLEX CHanneled ADHESIVE CI WITH MAXGRIP VENEER MORTAR

SCALE: NTS

22

Structure, substrates, flashing, sealant, and other items which are not part of the Senerflex Channeled Adhesive CI with MaxGrip Veneer Mortar system are the responsibility of others. This detail is subject to change without notice. BASF Corporation - Wall Systems accepts no liability for the end use of this detail. For conditions not shown, consult BASF Wall Systems for review of specific detail.





*BY OTHERS

TYPICAL COPING DETAIL

SENERFLEX CHANNELED ADHESIVE CI WITH MAXGRIP VENEER MORTAR

SCALE: NTS

23

Structure, substrates, flashing, sealant, and other items which are not part of the Senerflex Channeled Adhesive CI with MaxGrip Veneer Mortar system are the responsibility of others. This detail is subject to change without notice. BASF Corporation - Wall Systems accepts no liability for the end use of this detail. For conditions not shown, consult BASF Wall Systems for review of specific detail.

BASF
We create chemistry

FRAMING*

ACCEPTABLE SHEATHING*

SENERSHIELD-R/SENERSHIELD-RS/SENERSHIELD-VB

ADHESIVE/ BASE COAT APPLIED TO EPS
INSULATION BOARD

APPROVED EPS INSULATION BOARD

SENERGY BASE COAT & SENERGY
INTERMEDIATE 12 REINFORCING MESH

MAXGRIP VENEER MORTAR
(OVER SKIM COAT OF MAXGRIP VENEER MORTAR OR
SENERGY BASE COAT)

ADHERED VENEER*

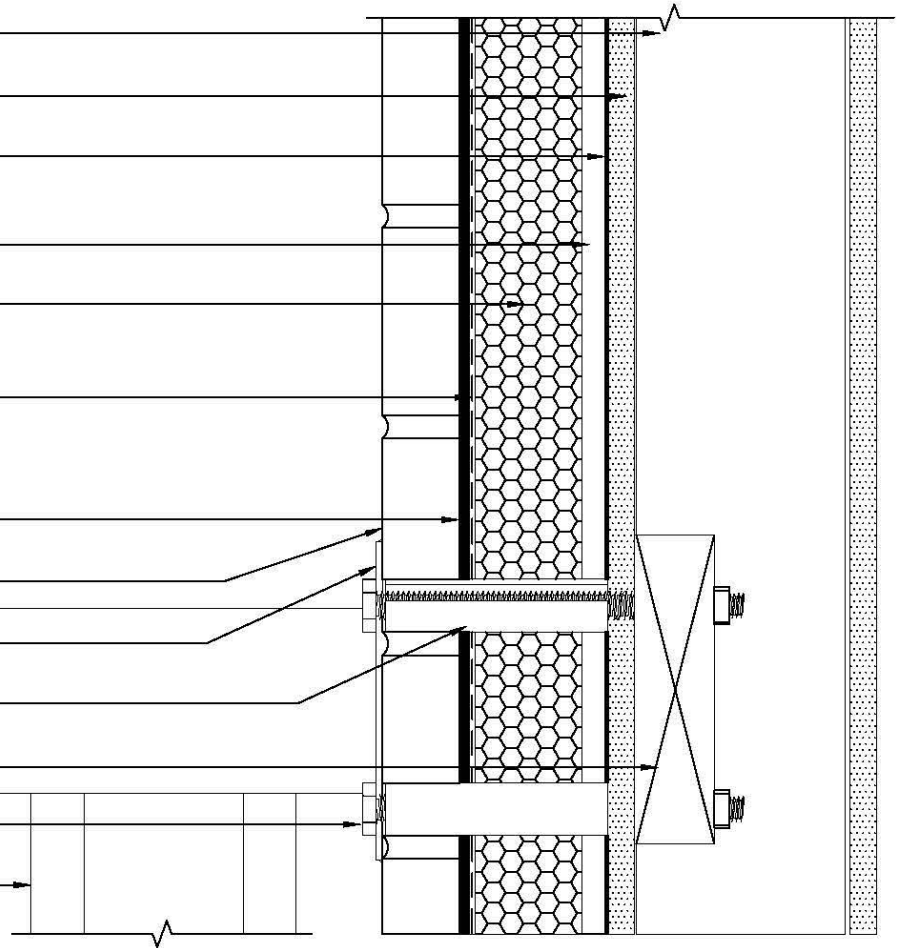
MOUNTING BRACKET SET IN SEALANT*

SLEEVE SET IN SEALANT*

BLOCKING OR OTHER SUPPORT*

MECHANICAL FASTENER SET IN SEALANT*

RAILING*



*BY OTHERS

TYPICAL RAILING ATTACHMENT

SENERFLEX CHANNELED ADHESIVE CI WITH MAXGRIP VENEER MORTAR

SCALE: NTS

24

Structure, substrates, flashing, sealant, and other items which are not part of the Senergy Seneflex Channeled Adhesive CI with MaxGrip Veneer Mortar system are the responsibility of others. This detail is subject to change without notice. BASF Corporation - Wall Systems accepts no liability for the end use of this detail. For conditions not shown, consult BASF Wall Systems for review of specific detail.

BASF
We create chemistry

BASF Corporation - Wall Systems

889 Valley Park Drive
Shakopee, MN 55379

Phone: 888.338.7170

www.senergy.basf.com

©2019 BASF Corporation

rev 09/2019