

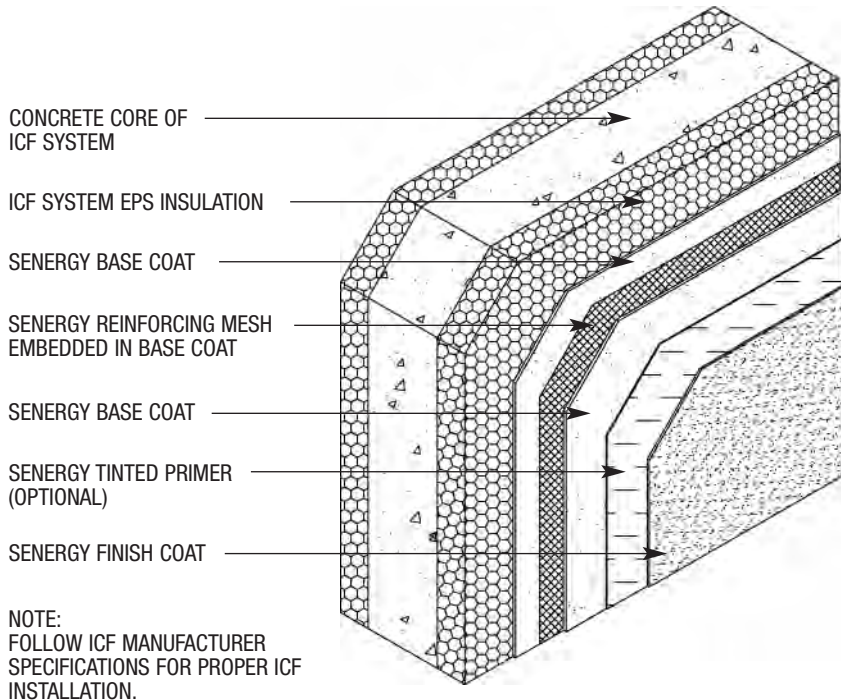


Senenergy® Surfacing Systems for Insulating Concrete Forms

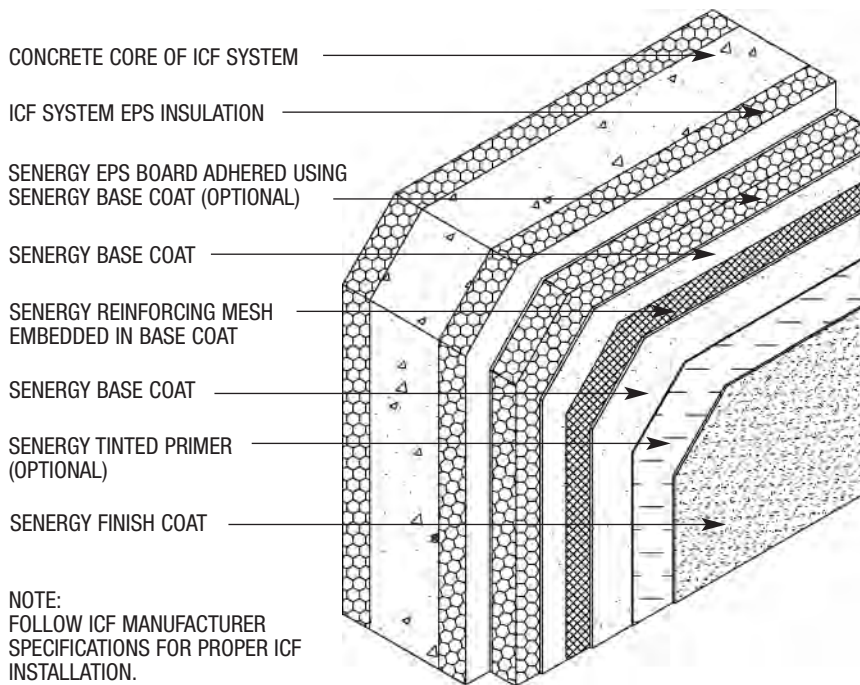


TYPICAL DETAILS 1026918

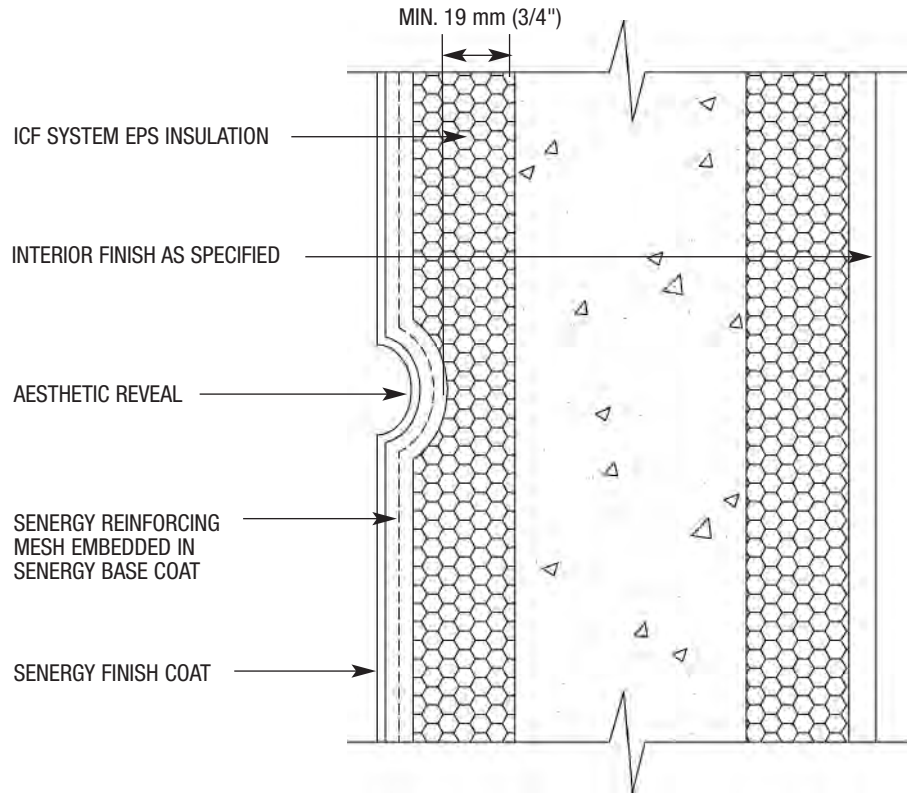
1. Senenergy ICF Surfacing System Installation
2. ICF System Installation with Optional Additional Layer of EPS over ICF
3. Reveal
4. EPS Shape Application
5. Window Head (Wood Buck)
6. Window Jamb (Wood Buck)
7. Window Head (Vinyl Buck with EPS Trim)
8. Window Jamb (Vinyl Buck with EPS Trim)
9. Recessed Window Head/Jamb (Wood Buck/Vinyl Buck)
10. Window Sill (Wood Buck with EPS Trim)
11. Window Sill (Vinyl Buck with EPS Trim)
12. Recessed Window Sill (Wood Buck/VINYL BUCK)
13. Parapet
14. Transition to Existing Wall
15. Penetration
16. Termination at Foundation
17. Floorline (Non-Combustible Construction)
18. Eave Detail Exposed Top Plate
19. Sloped Roof/Wall Intersection
20. Kick-out Flashing



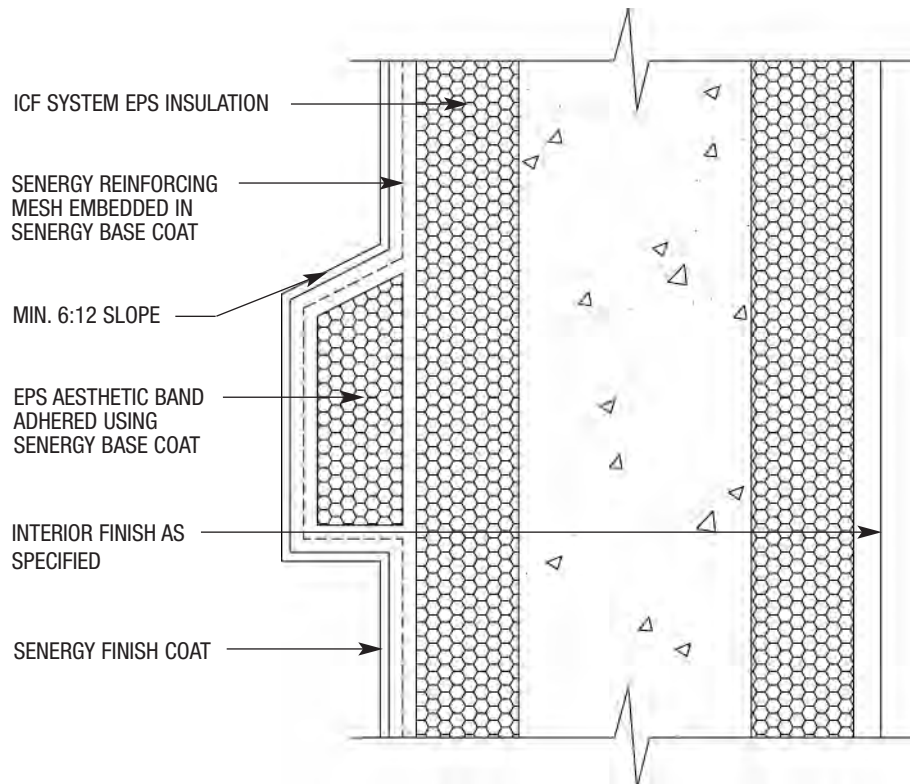
ICF-01 TYPICAL SENERGY ICF SURFACING SYSTEM INSTALLATION



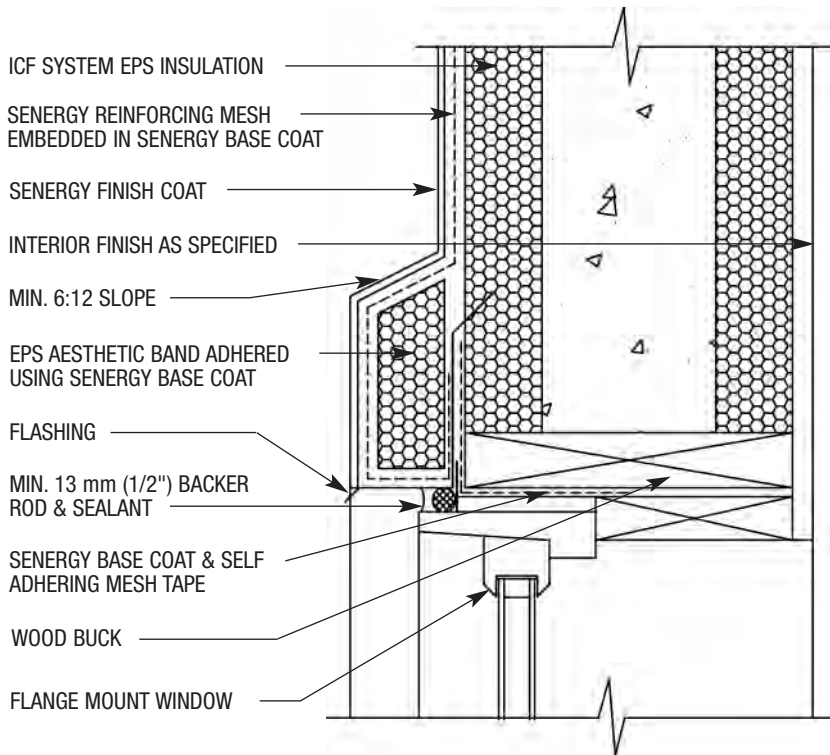
ICF-02 TYPICAL SENERGY ICF SURFACING SYSTEM INSTALLATION WITH OPTIONAL ADDITIONAL LAYER OF EPS OVER ICF



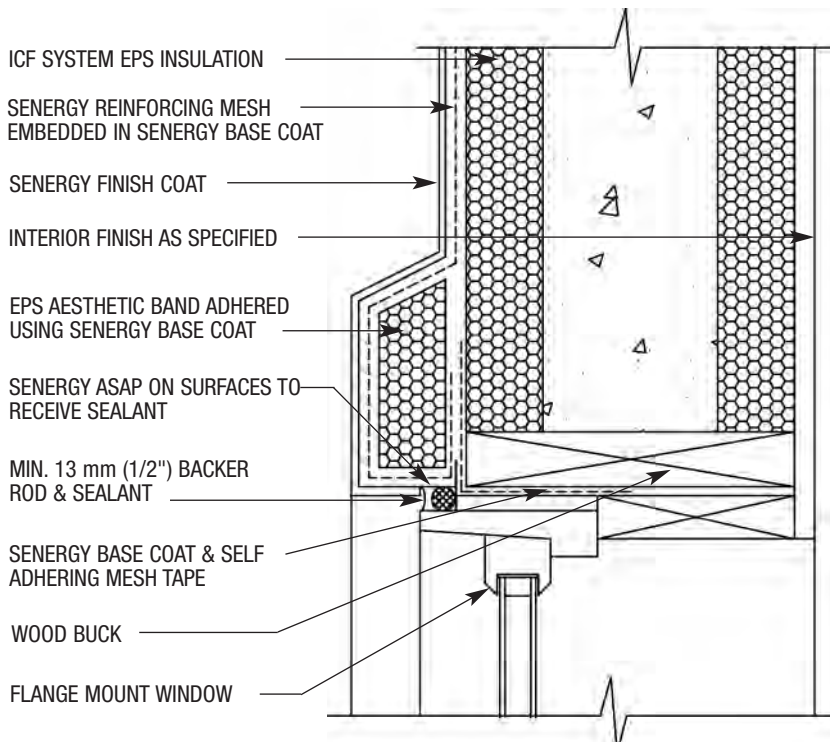
ICF-03 TYPICAL REVEAL



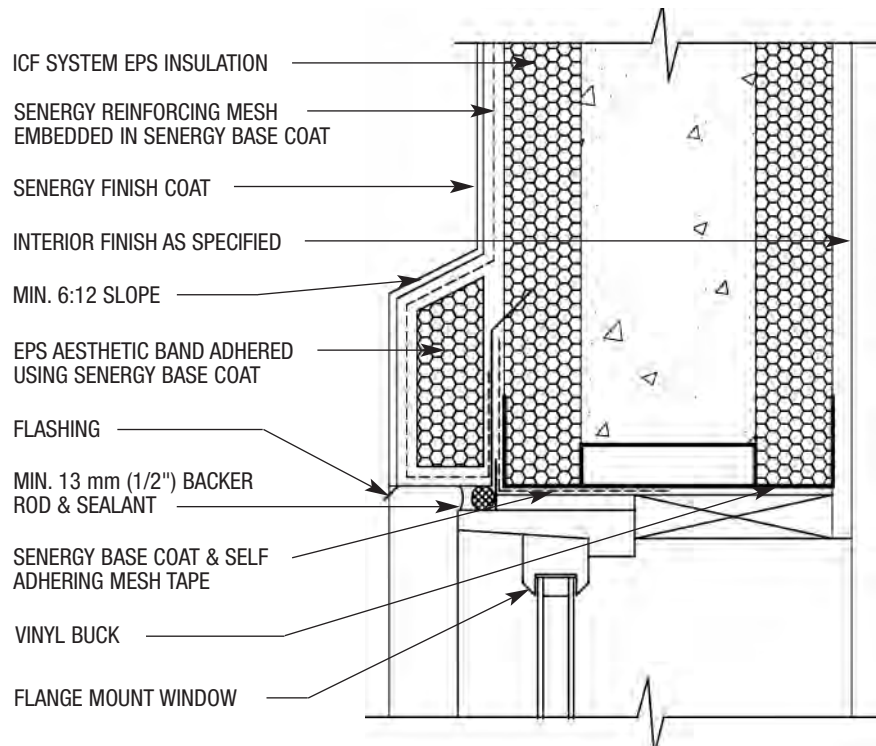
ICF-04 TYPICAL EPS SHAPE APPLICATION



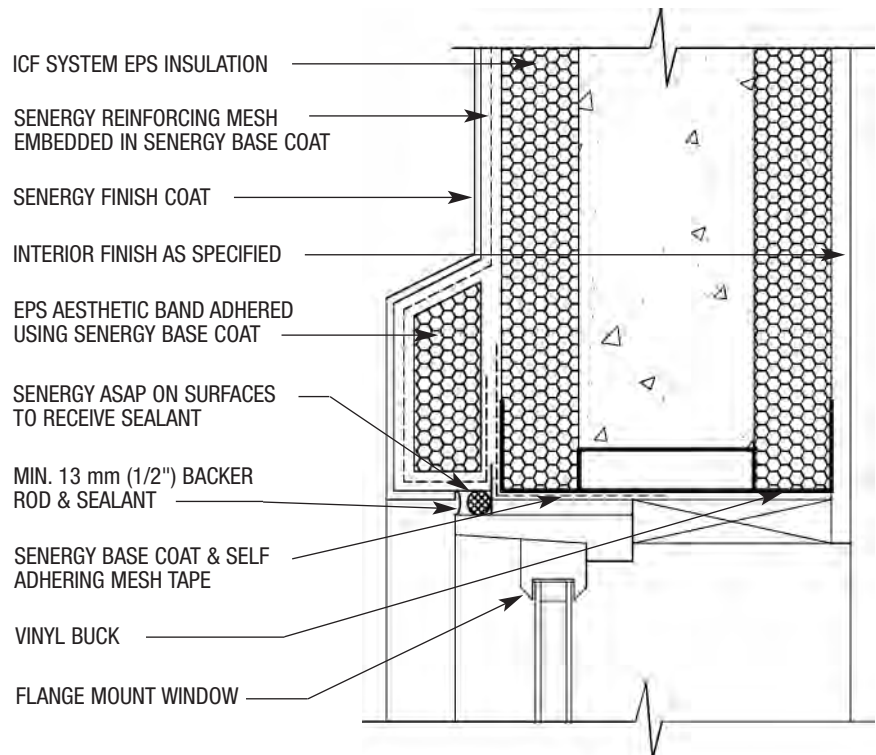
ICF-05 TYPICAL WINDOW HEAD DETAIL (WOOD BUCK)



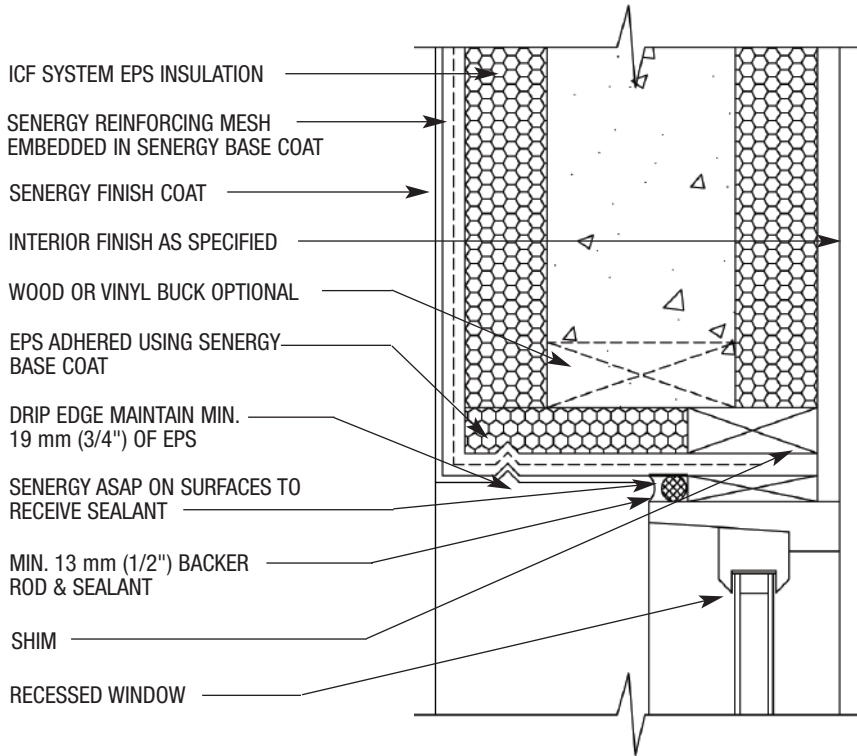
ICF-06 TYPICAL WINDOW JAMB DETAIL (WOOD BUCK)



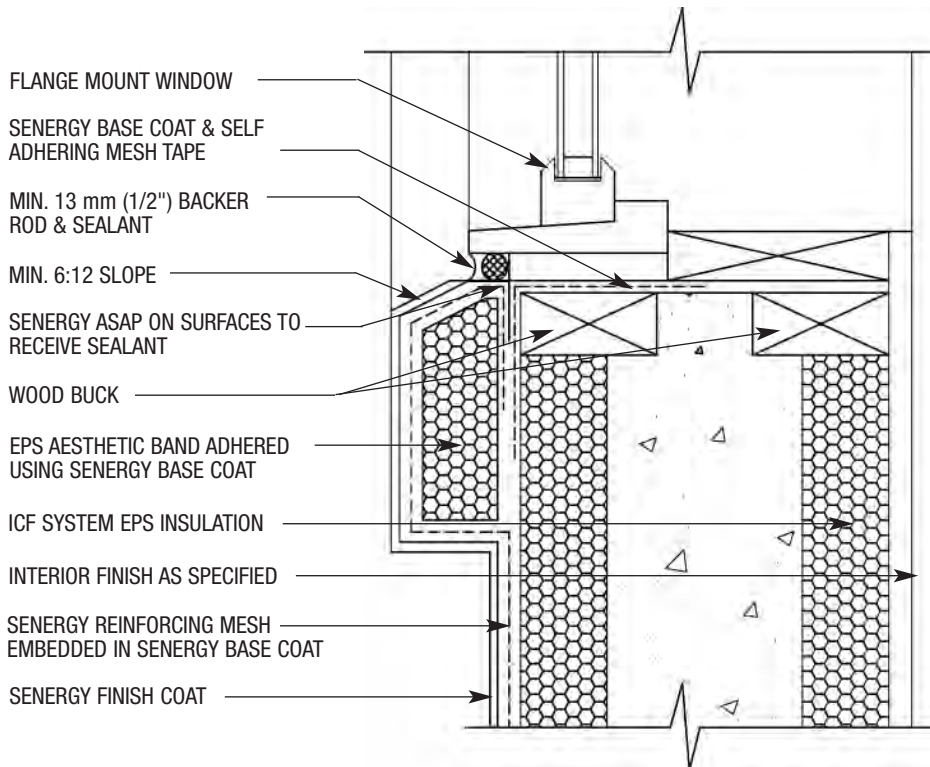
ICF-07 WINDOW HEAD (VINYL BUCK WITH EPS TRIM)



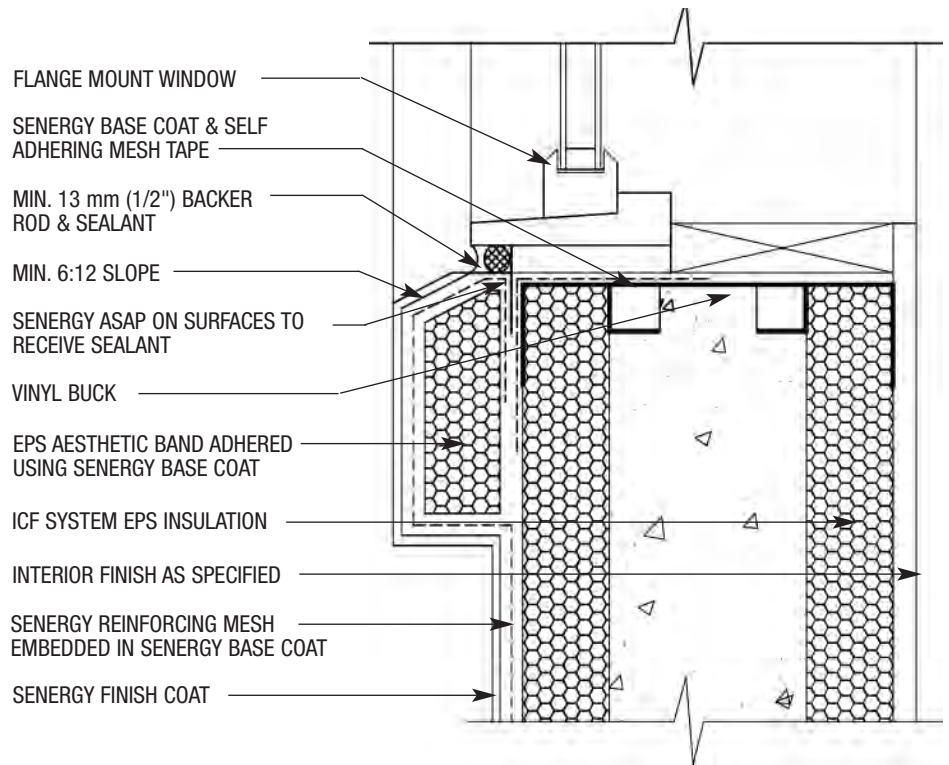
ICF-08 WINDOW JAMB (VINYL BUCK WITH EPS TRIM)



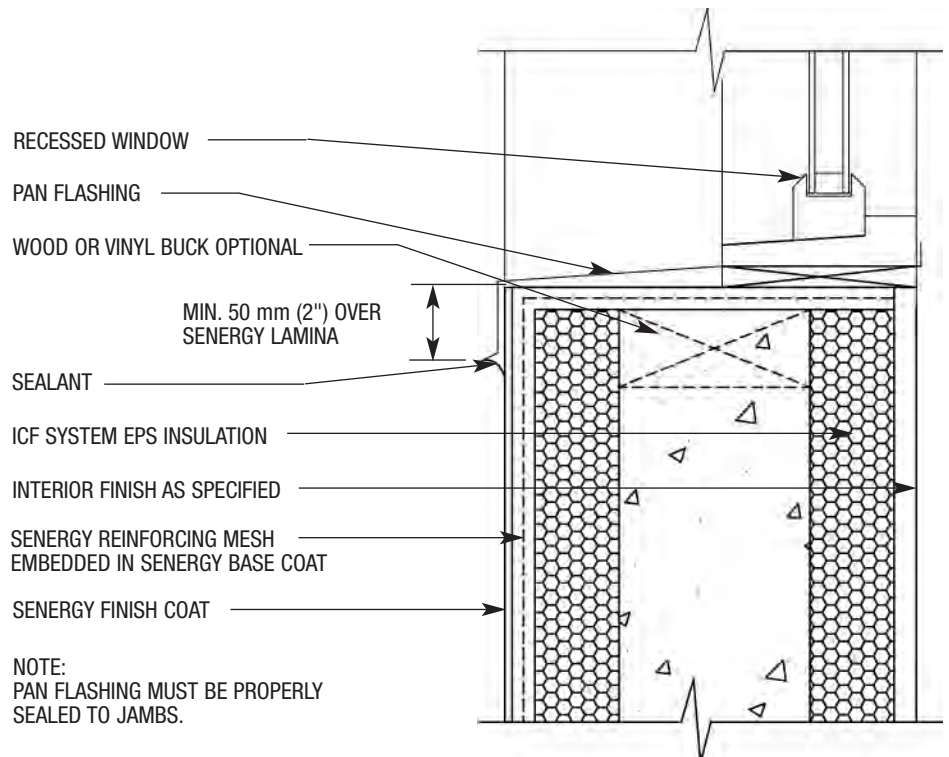
ICF-09 RECESSED WINDOW HEAD/JAMB (WOOD BUCK/VINYL BUCK)



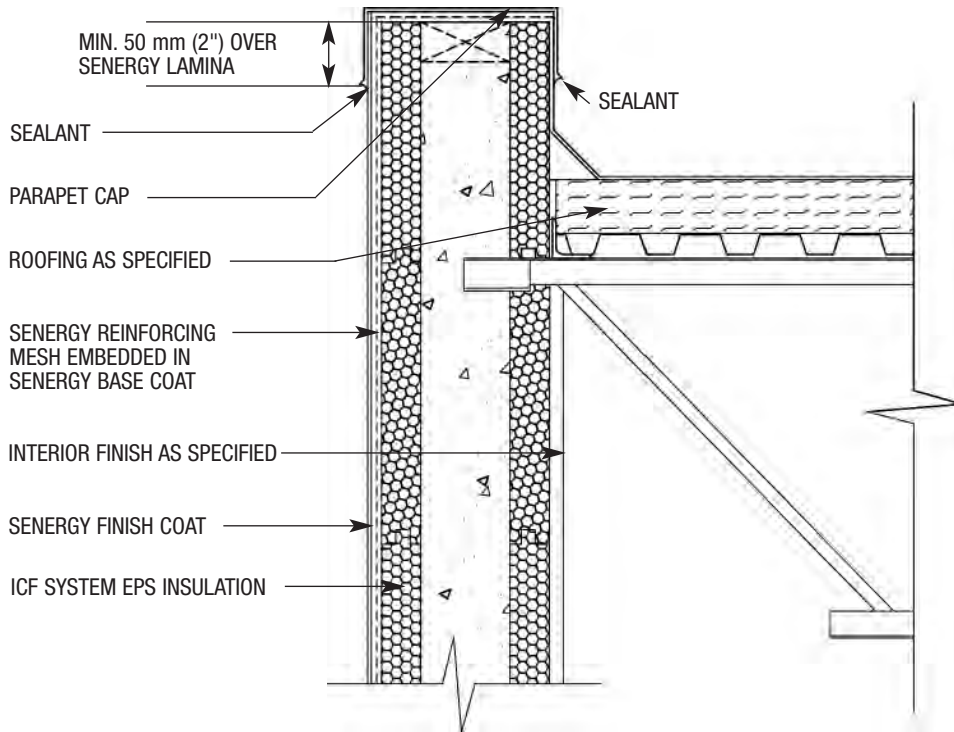
ICF-10 WINDOW SILL (WOOD BUCK WITH EPS TRIM)



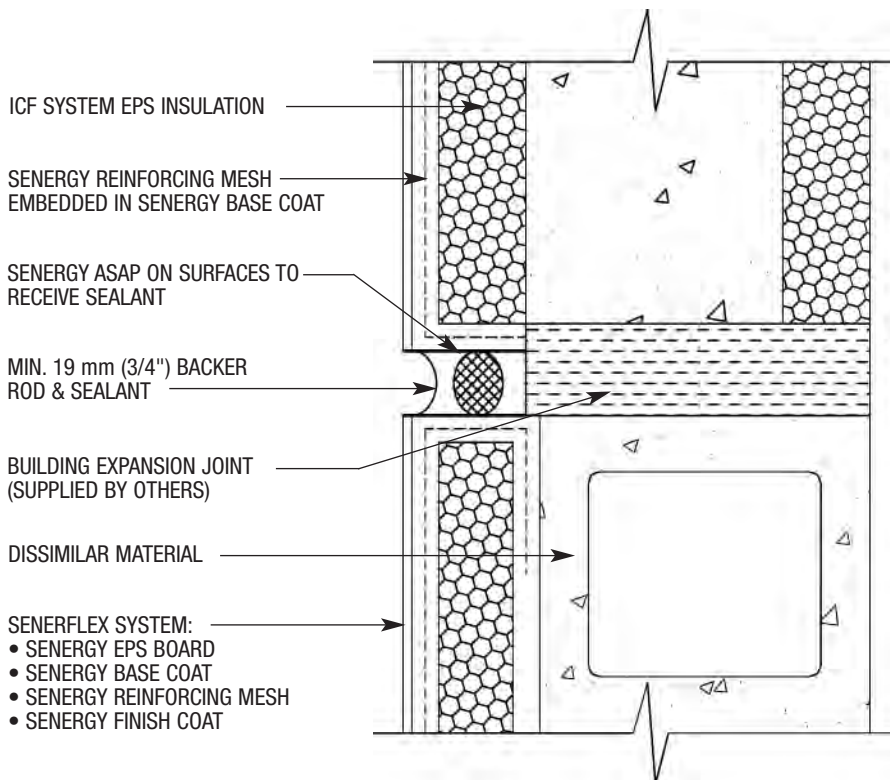
ICF-11 WINDOW SILL (VINYL BUCK WITH EPS TRIM)



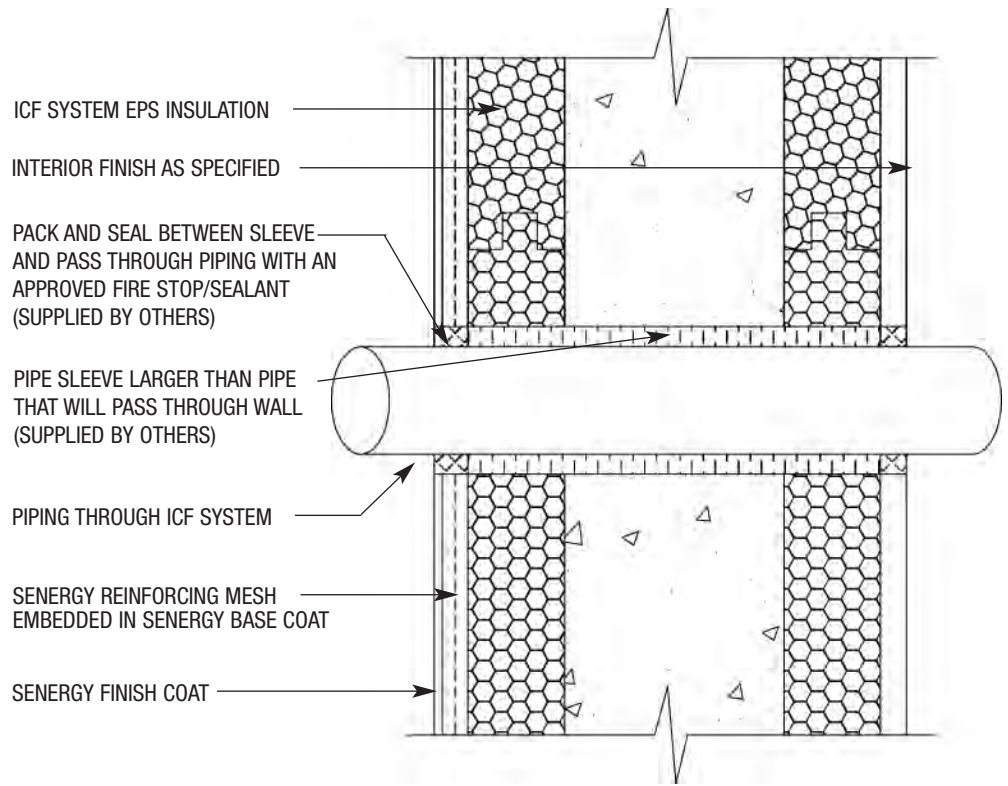
ICF-12 RECESSED WINDOW SILL (WOOD BUCK/VINYL BUCK)



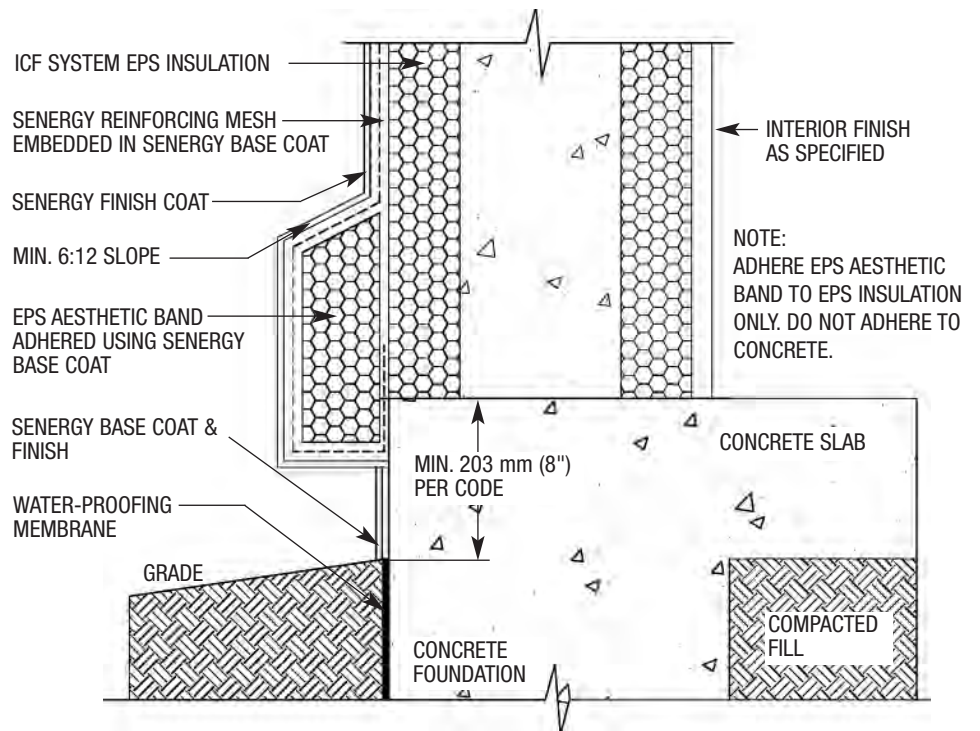
ICF-13 TYPICAL PARAPET DETAIL



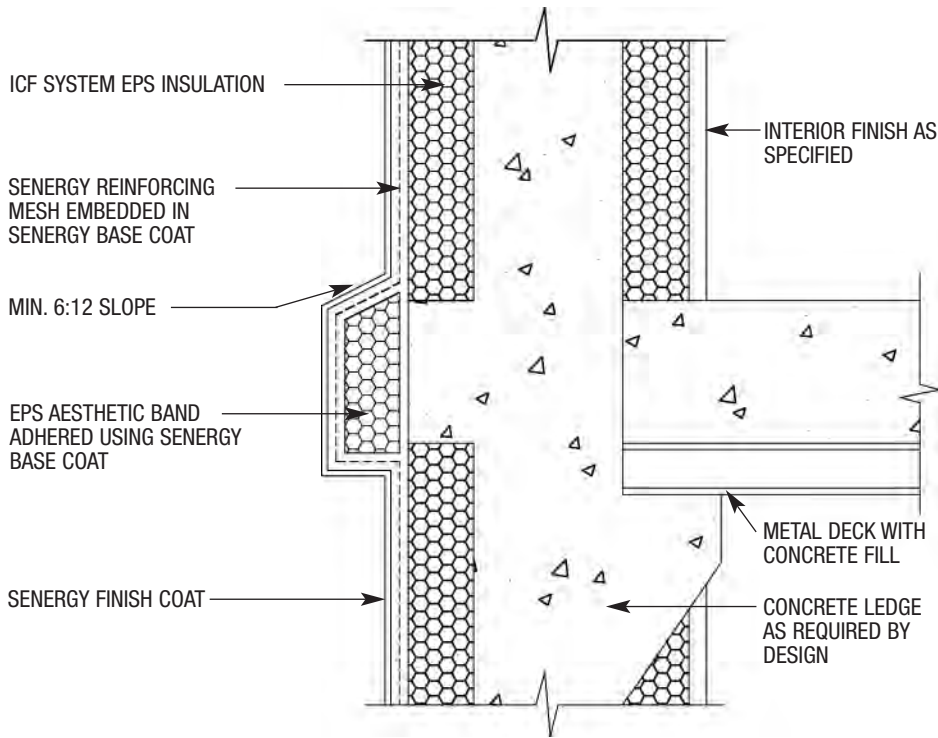
ICF-14 TYPICAL TRANSITION TO EXISTING WALL



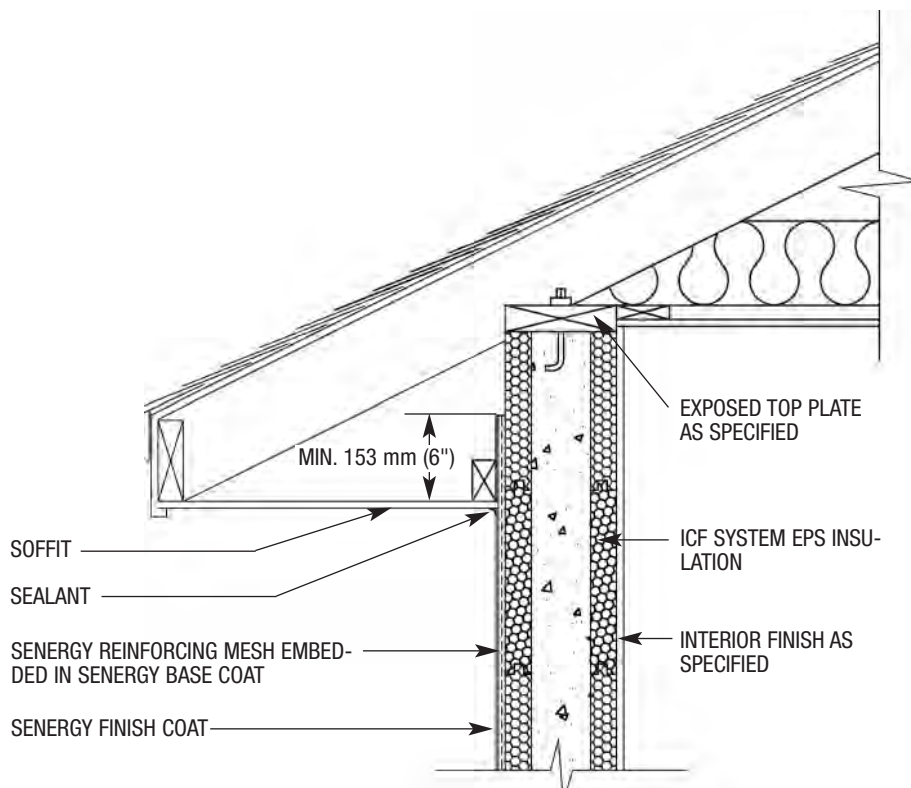
ICF-15 TYPICAL PENETRATION



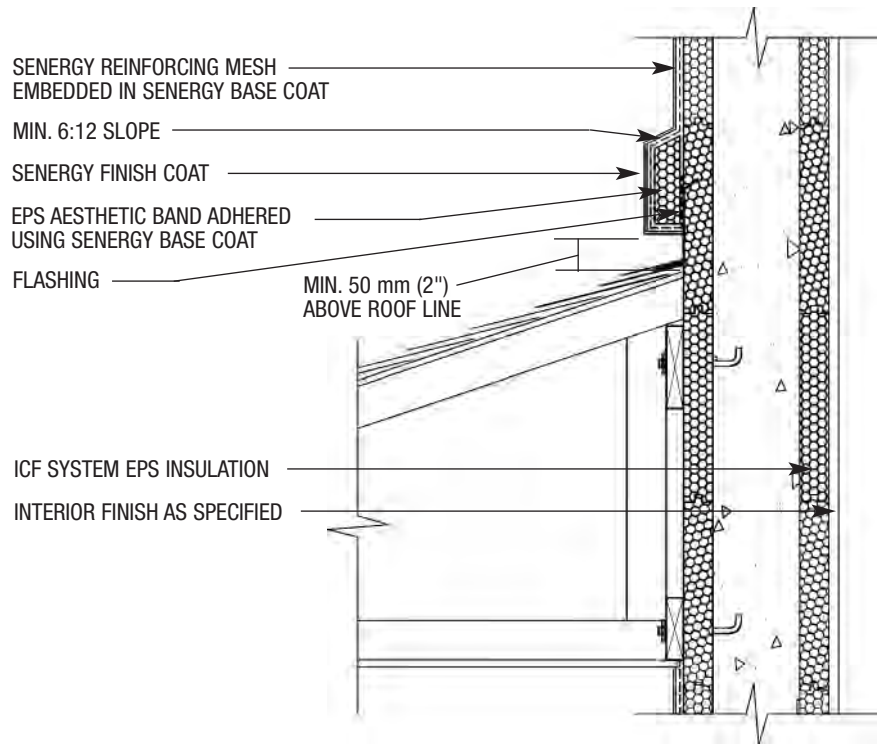
ICF-16 TYPICAL TERMINATION AT FOUNDATION



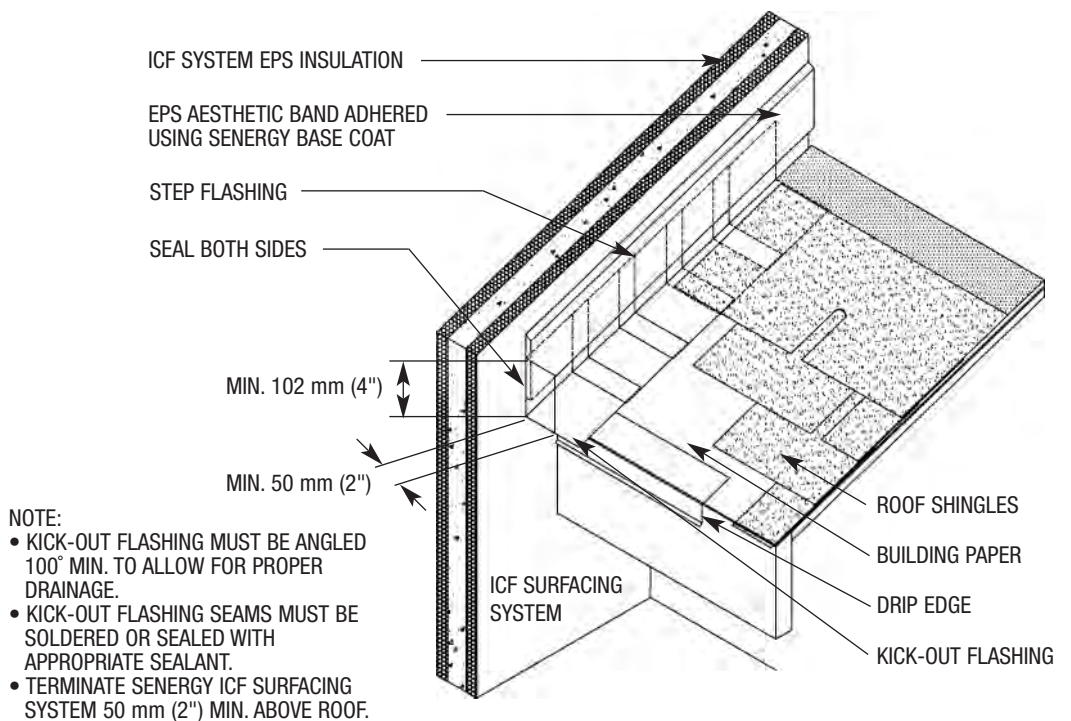
ICF-17 FLOORLINE (NON-COMBUSTIBLE CONSTRUCTION)



ICF-18 EAVE DETAIL EXPOSED TOP PLATE



ICF-19 SLOPED ROOF/WALL INTERSECTION



ICF-20 TYPICAL KICK-OUT FLASHING DETAIL

NOTES

General Notes

BASF Wall Systems is an operating unit of BASF Construction Chemicals, LLC. (herein after referred to as "BASF Wall Systems") These details are presented in good faith by BASF Wall Systems and represent typical and/or general conditions. They are offered as a guide for consideration to assist the designer, specifier, installer and/or owner. The responsibility remains with the user for the design of any system. For conditions not shown, consult BASF Wall Systems for specific recommendations. Consult current Senergy technical bulletins for such information as acceptable sealants, insulation attachment methods, installation of air/weather barriers, residential policy, code and test reports, geo-climatic considerations, etc. Installation requirements for sealant (joint size configuration, primers, bond breakers) shall be in accordance with sealant manufacturer's specifications and instructions.

Technical Support

Consult the BASF Wall Systems Technical Services Department for specific recommendations concerning all other applications. Consult the Senergy website, www.senergy.basf.com, for additional information about products and systems and for updated literature.

Residential Policy

On one and two-family residential framed construction, BASF Wall Systems requires that the wall system selected be one that includes provisions for water drainage. The choices include Senturion® line of water drainage EIFS, commercial Senerflex® Channeled Adhesive or Channeled Insulation Design, Senergy Stucco Wall System, and Senergy Cement-Board Stucco™ Systems. There are no exceptions to this policy. Under no circumstances will BASF Wall Systems warrant the use of any other system on this type of construction without expressed written authorization from BASF Wall Systems [Residential construction using EIFS on masonry (CMU) or poured concrete does not require the additional water drainage provisions described above. Senergy Exterior Surfacing Systems for insulating concrete forms are also acceptable.] See the Senergy Residential Policy Bulletin for a more detailed discussion of this topic. Consult BASF Wall Systems Technical Services Department for specific recommendations concerning all other applications. Consult the Senergy website, www.senergy.basf.com for additional information about products and systems and for updated literature.

Disclaimer

This information and all further technical advice are based on BASF Wall Systems' present knowledge and experience. However, BASF assumes no liability for providing such information and advice including the extent to which such information and advice may relate to existing third party intellectual property rights, especially patent rights. In particular, BASF Wall Systems disclaims any and all CONDITIONS AND WARRANTIES, WHETHER EXPRESS OR IMPLIED, INCLUDING THE IMPLIED WARRANTIES OF FITNESS FOR A PARTICULAR PURPOSE OR MERCHANTABILITY. BASF WALL SYSTEMS SHALL NOT BE RESPONSIBLE FOR CONSEQUENTIAL, INDIRECT OR INCIDENTAL DAMAGES (INCLUDING LOSS OF PROFITS) OF ANY KIND. BASF Wall Systems reserves the right to make any changes according to technological progress or further developments. It is the customer's responsibility and obligation to carefully inspect and test any incoming goods. Performance of the product(s) described herein should be verified by testing and carried out only by qualified experts. It is the sole responsibility of the customer to carry out and arrange for any such testing. Reference to trade names used by other companies is neither a recommendation, nor an endorsement of any product and does not imply that similar products could not be used.

BASF Wall Systems

3550 St. Johns Bluff Road South
Jacksonville, FL 32224-2614

Phone 800 • 221 • 9255

Fax 904 • 996 • 6300

www.senergy.basf.com