

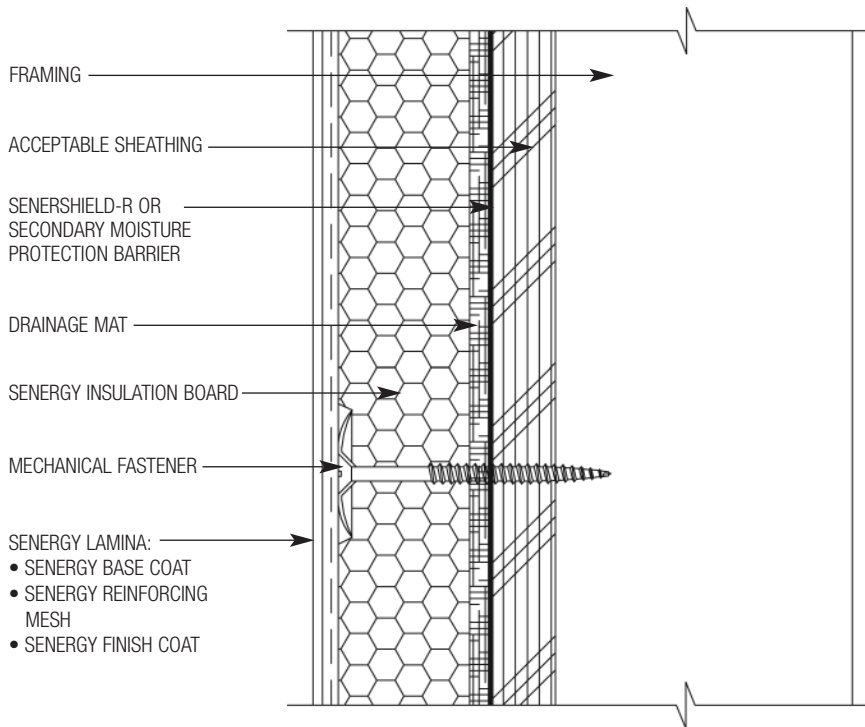


## Senturion™ III Wall System



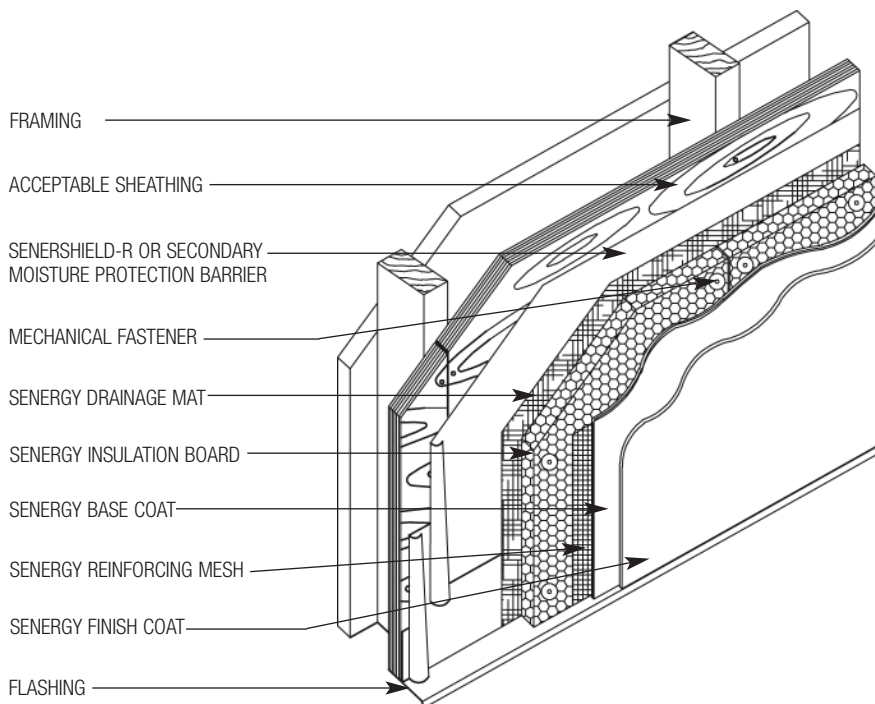
### TYPICAL DETAILS 1017666

1. Senturion III Wall System Application (Plan View)
2. Senturion III Wall System Application (Isometric View)
3. Aesthetic Groove (Plan View)
4. Insulation Boards / Reinforcing Mesh Application at Openings
5. Clad Window Jamb With Aesthetic Band
6. Clad Window Head With Aesthetic Band
7. Clad Window Sill With Aesthetic Band
8. Clad Window Jamb
9. Clad Window Head
10. Clad Window Sill
11. Primed Window Jamb
12. Primed Window Head
13. Primed Window Sill
14. Expansion Joint Detail at Floorline of Wood Frame Construction
15. Expansion Joint at Change in Substrate (Plan View)
16. Termination at Soffit/Gable End
17. Downspout Application (Plan View)
18. Pipe Penetration
19. Light Fixture
20. Dryer Vent
21. Termination at Top of Deck
22. Termination at Bottom of Deck
23. Termination at Foundation
24. Termination at Foundation
25. Termination at Brick or Stone
26. Termination at Brick or Stone
27. Kick-out Flashing Detail

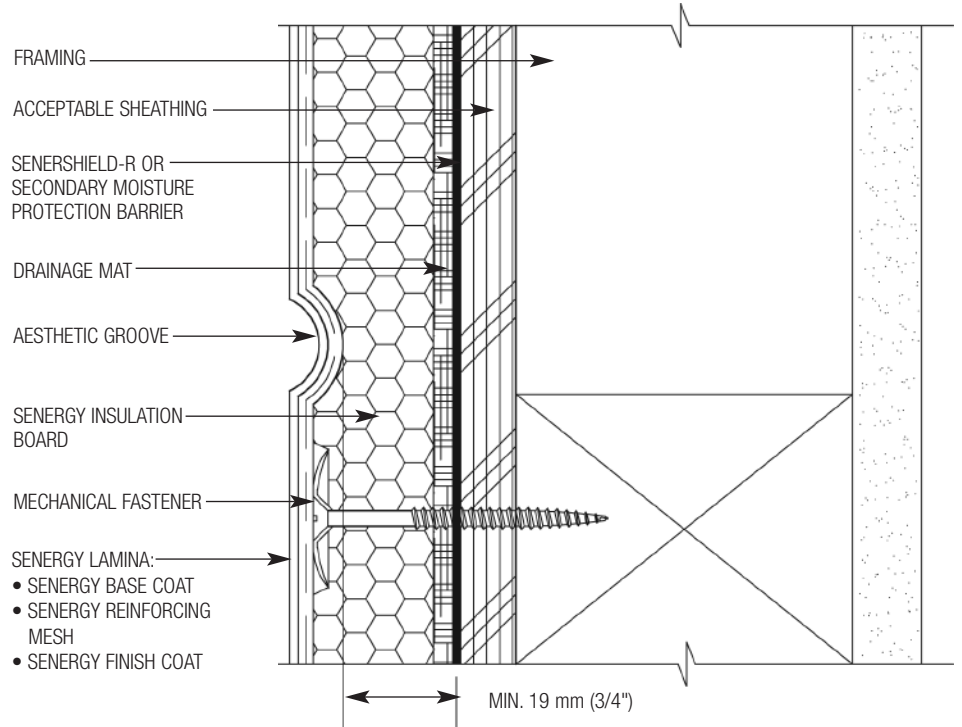


**SIII-01 TYPICAL SENTURION III APPLICATION (PLAN VIEW)**

NOTE: FRAMING, ACCEPTABLE SHEATHING AND SEALANT BY OTHERS

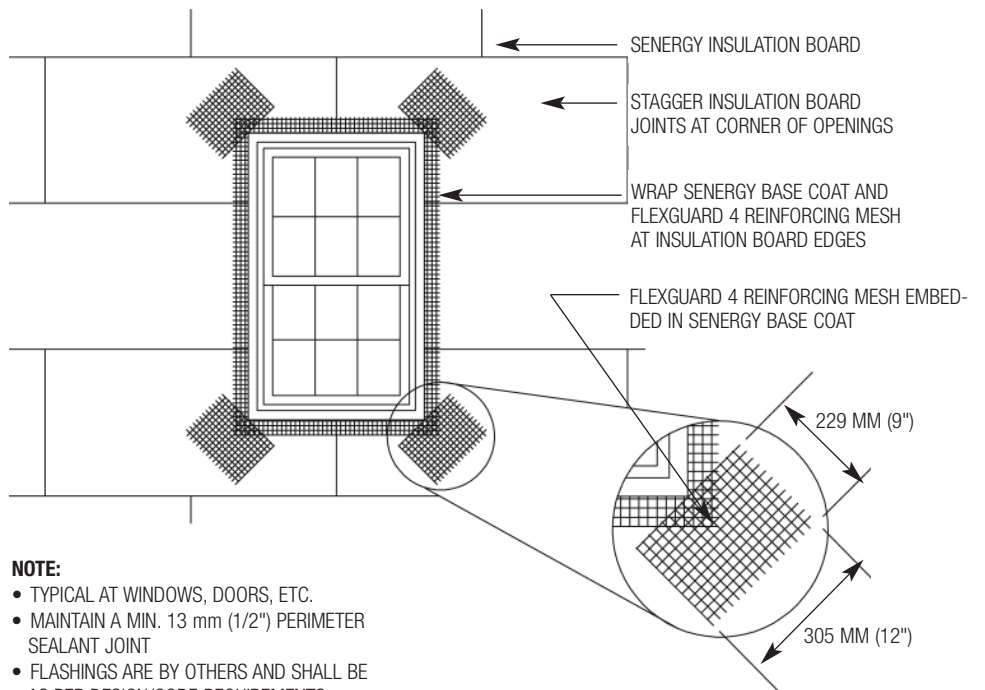


**SIII-02 TYPICAL SENTURION III APPLICATION (ISOMETRIC VIEW)**

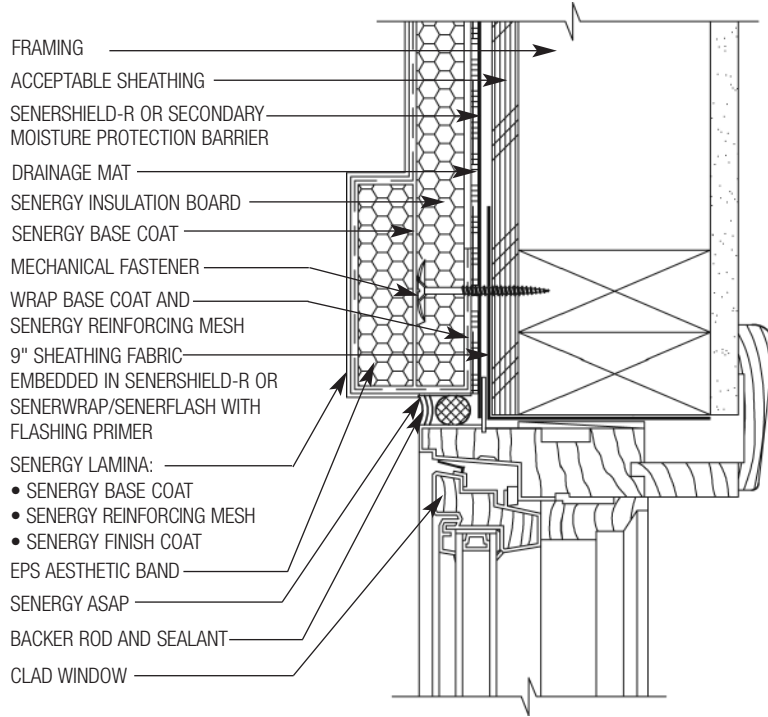


### SIII-03 TYPICAL AESTHETIC GROOVE (PLAN VIEW)

NOTE: FRAMING, ACCEPTABLE SHEATHING  
AND SEALANT BY OTHERS

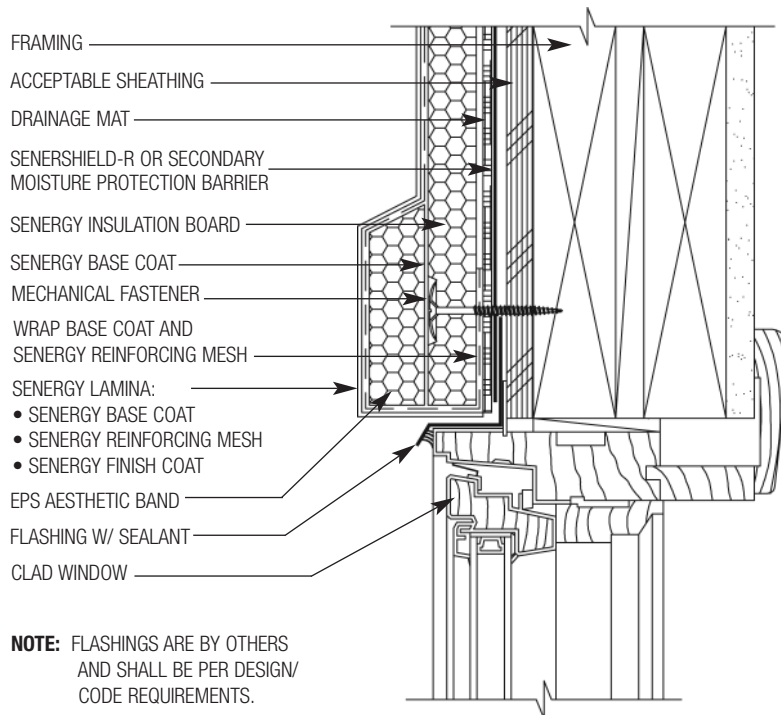


### SIII-04 TYPICAL INSULATION BOARDS/REINFORCING MESH APPLICATION AT OPENINGS



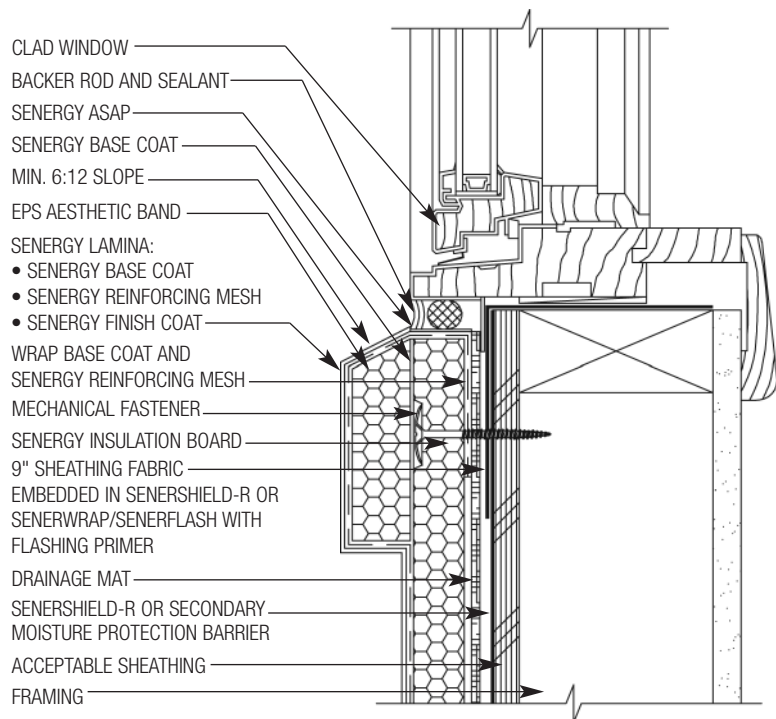
**SIII-05 TYPICAL CLAD WINDOW JAMB WITH AESTHETIC BAND**

NOTE: FRAMING, ACCEPTABLE SHEATHING AND SEALANT BY OTHERS



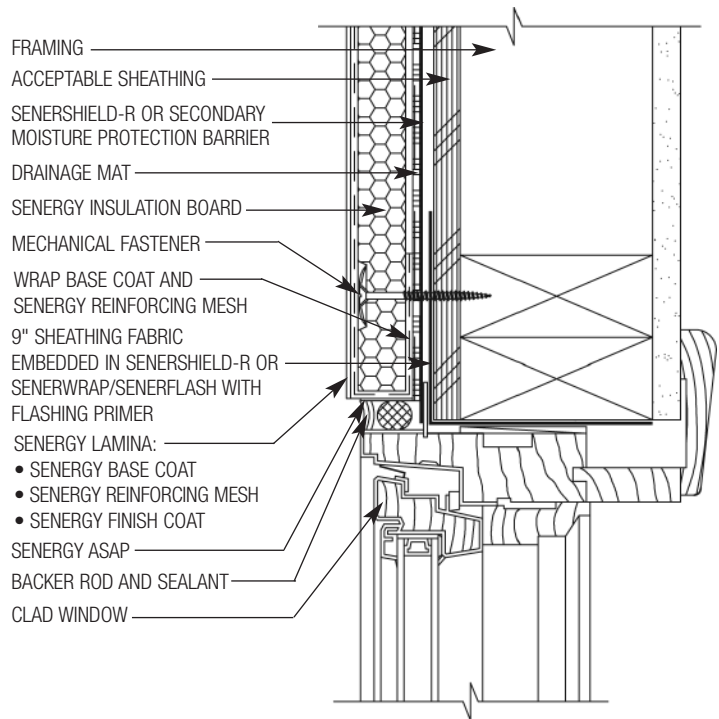
**NOTE:** FLASHINGS ARE BY OTHERS AND SHALL BE PER DESIGN/ CODE REQUIREMENTS.

**SIII-06 TYPICAL CLAD WINDOW HEAD WITH AESTHETIC BAND**

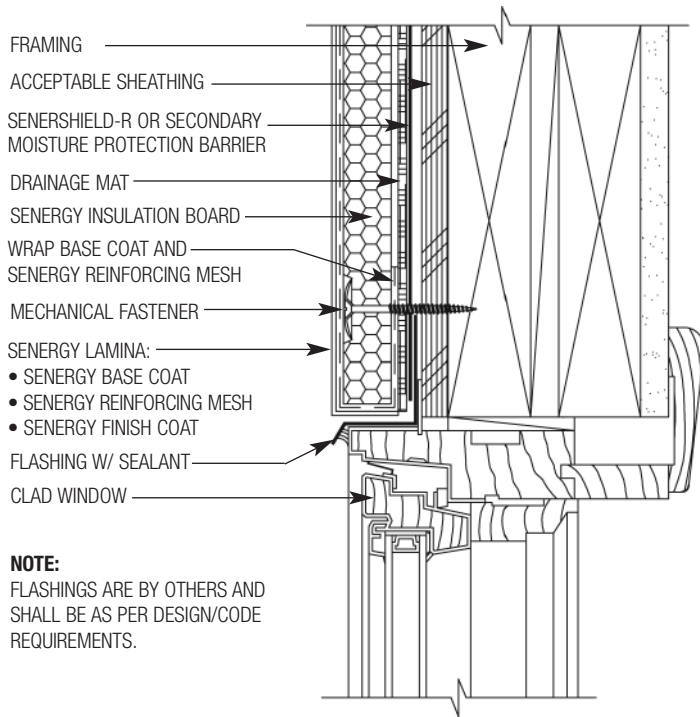


**SIII-07 TYPICAL CLAD WINDOW SILL W/ AESTHETIC BAND**

NOTE: FRAMING, ACCEPTABLE SHEATHING AND SEALANT BY OTHERS

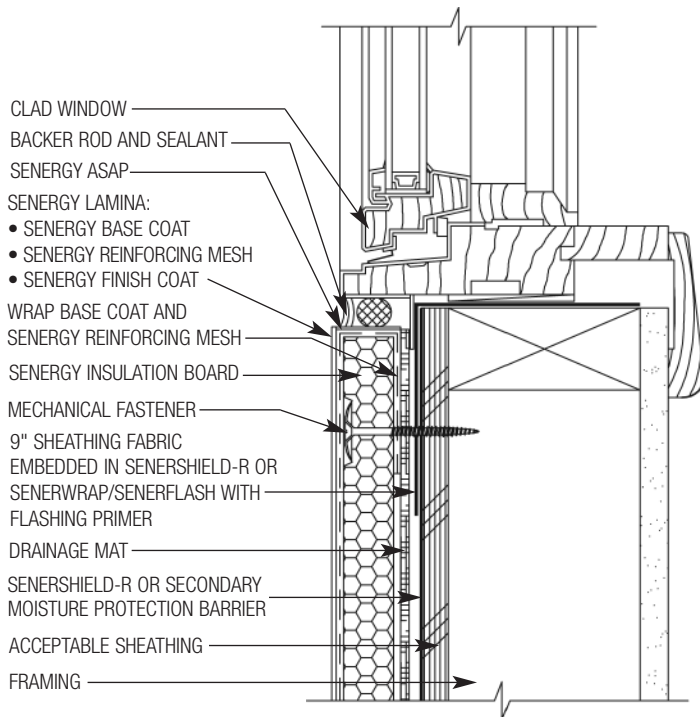


**SIII-08 TYPICAL CLAD WINDOW JAMB**

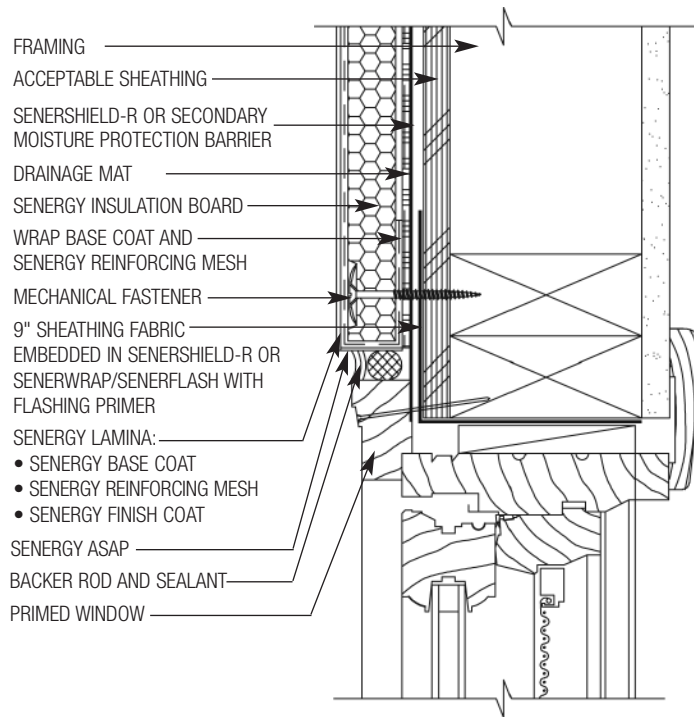


**SIII-09 TYPICAL CLAD WINDOW HEAD**

NOTE: FRAMING, ACCEPTABLE SHEATHING AND SEALANT BY OTHERS

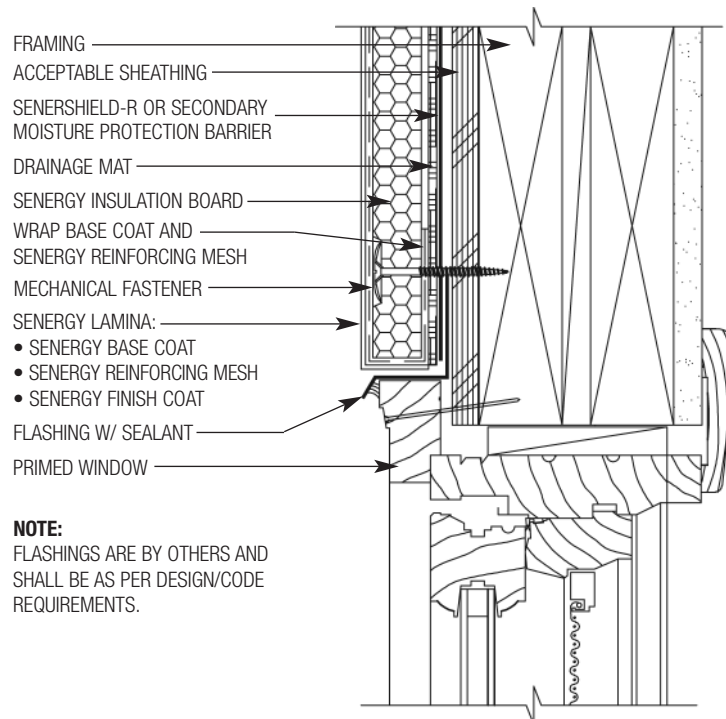


**SIII-10 TYPICAL CLAD WINDOW SILL**

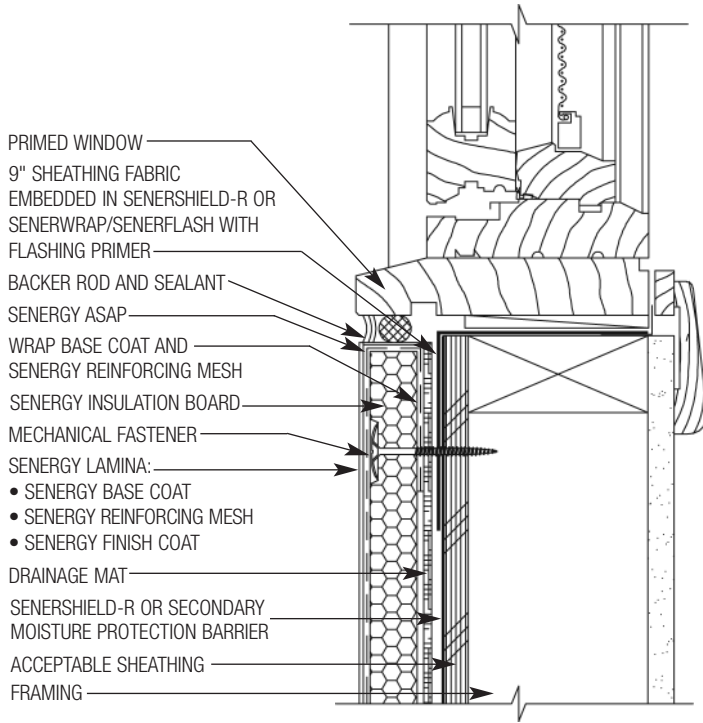


### SIII-11 TYPICAL PRIMED WINDOW JAMB

NOTE: FRAMING, ACCEPTABLE SHEATHING AND SEALANT BY OTHERS

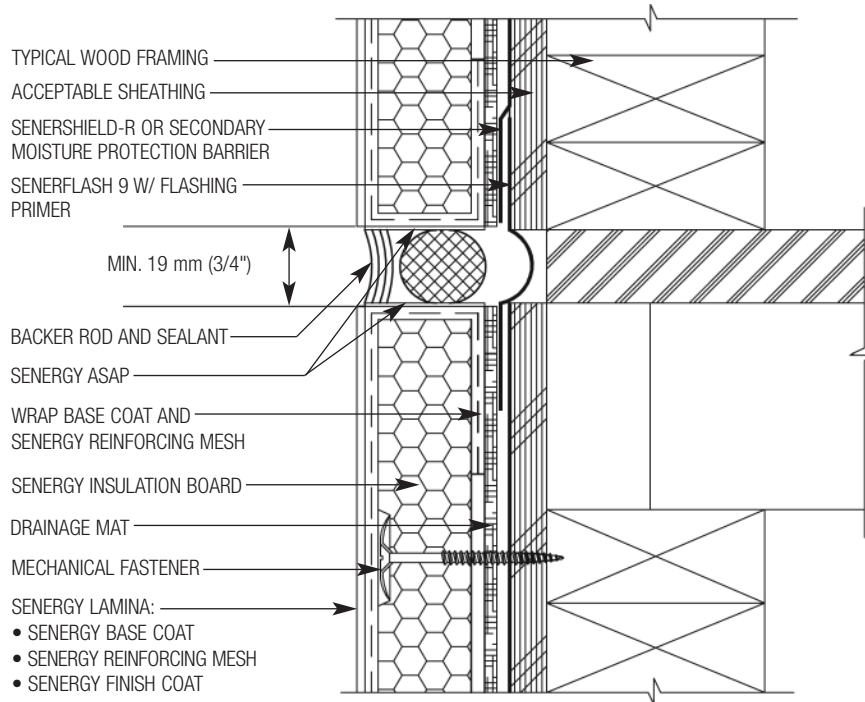


### SIII-12 TYPICAL PRIMED WINDOW HEAD



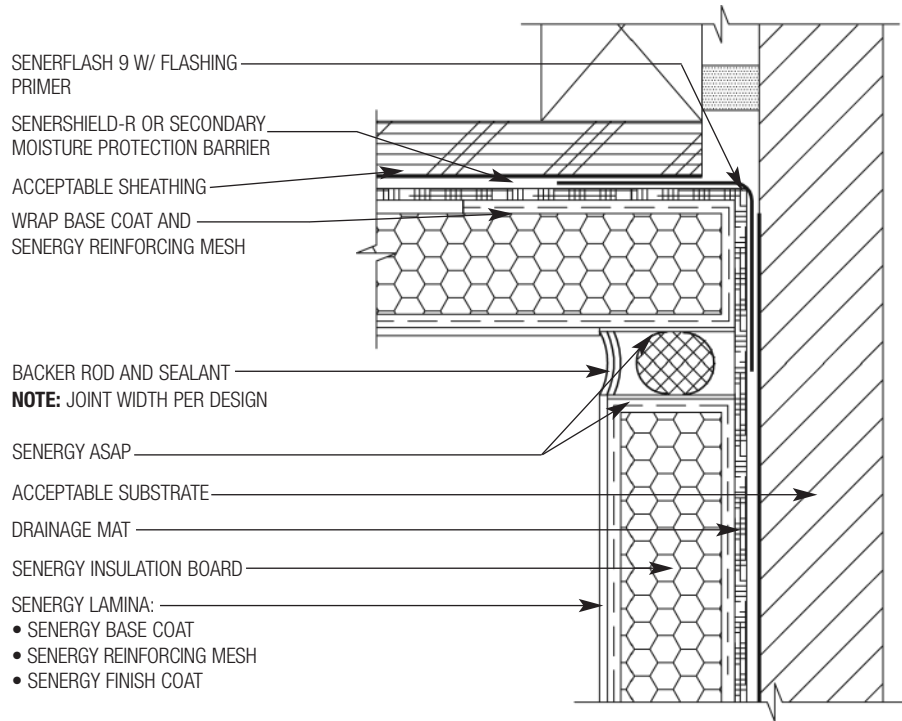
**SIII-13 TYPICAL PRIMED WINDOW SILL**

NOTE: FRAMING, ACCEPTABLE SHEATHING AND SEALANT BY OTHERS



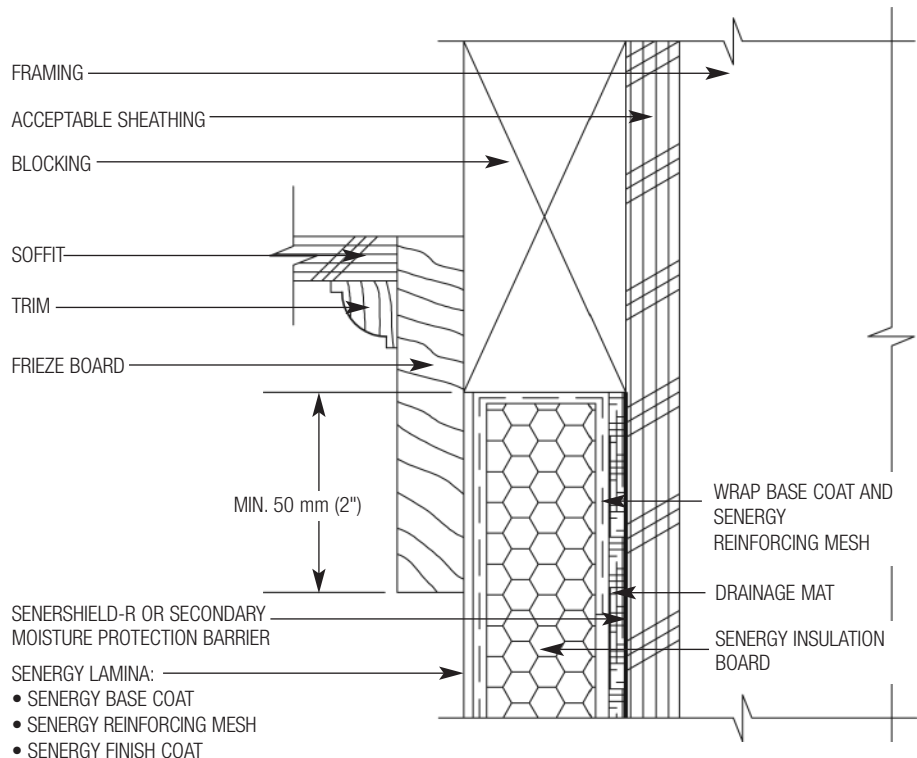
**SIII-14 TYPICAL EXPANSION JOINT DETAIL AT FLOORLINE OF WOOD FRAME CONSTRUCTION**



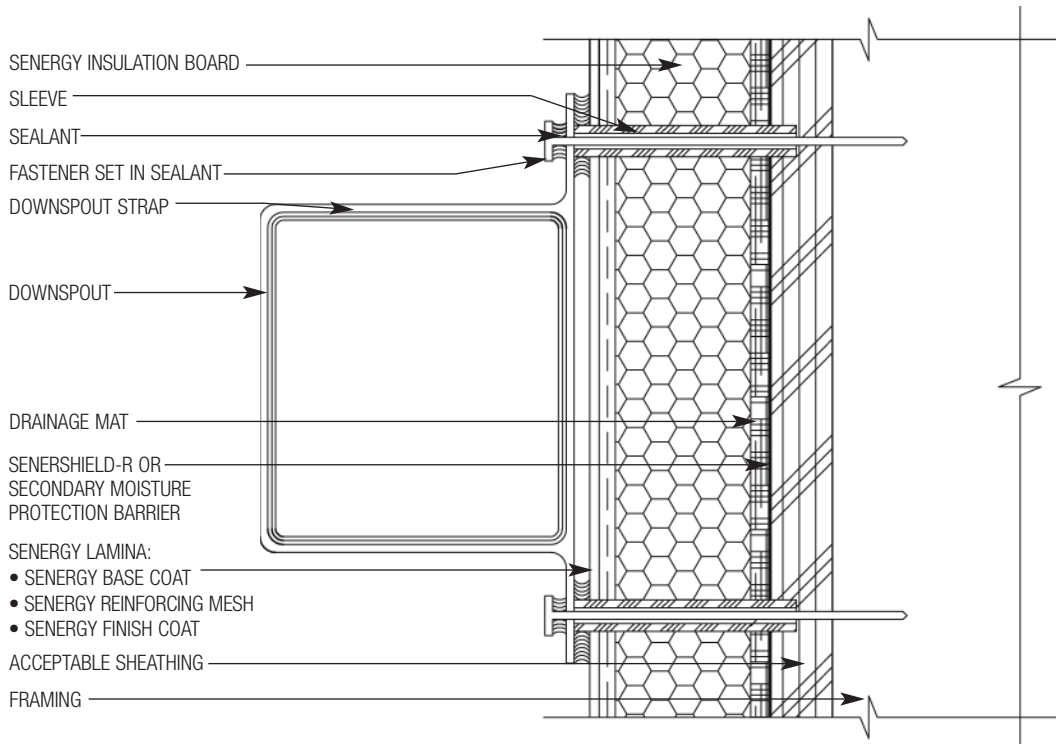


**SIII-15 TYPICAL EXPANSION JOINT AT CHANGE IN SUBSTRATE (PLAN VIEW)**

NOTE: FRAMING, ACCEPTABLE SHEATHING AND SEALANT BY OTHERS

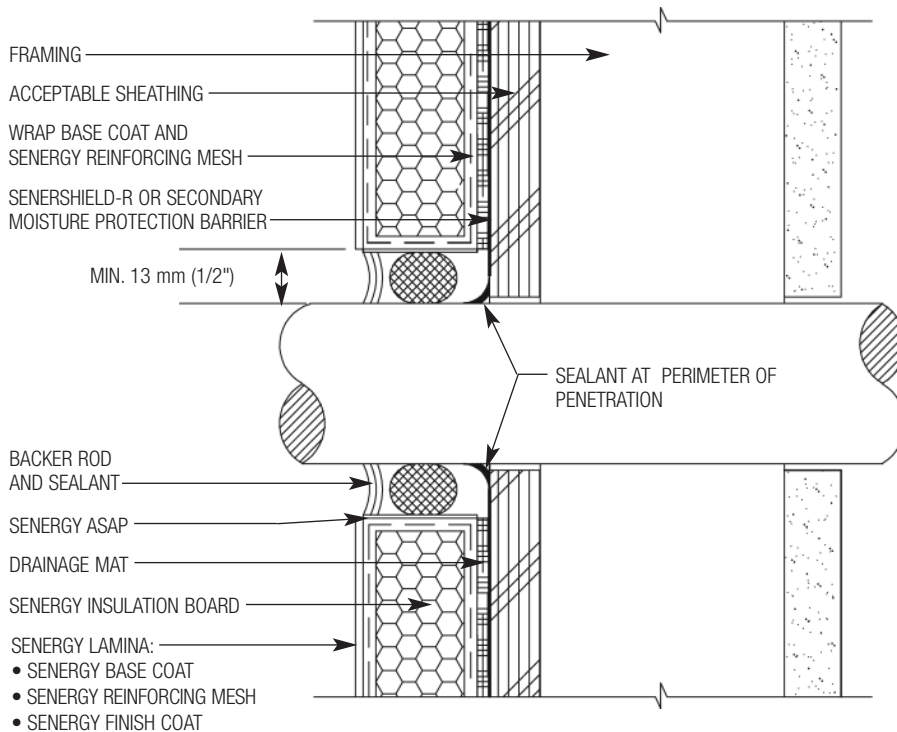


**SIII-16 TYPICAL TERMINATION AT SOFFIT/GABLE END**

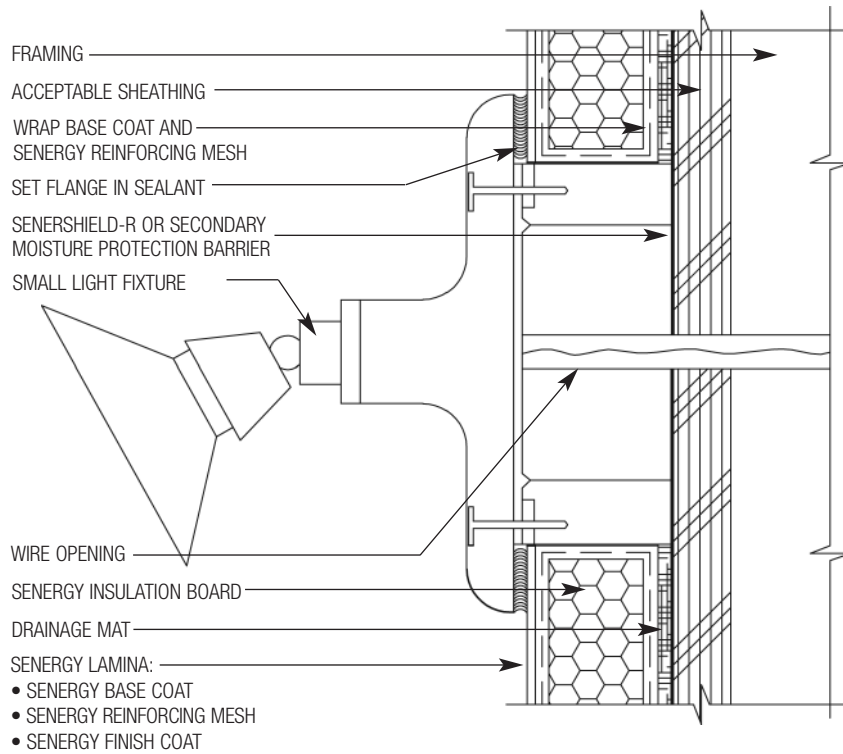


**SIII-17 TYPICAL DOWNSPOUT APPLICATION (PLAN VIEW)**

NOTE: FRAMING, ACCEPTABLE SHEATHING AND SEALANT BY OTHERS

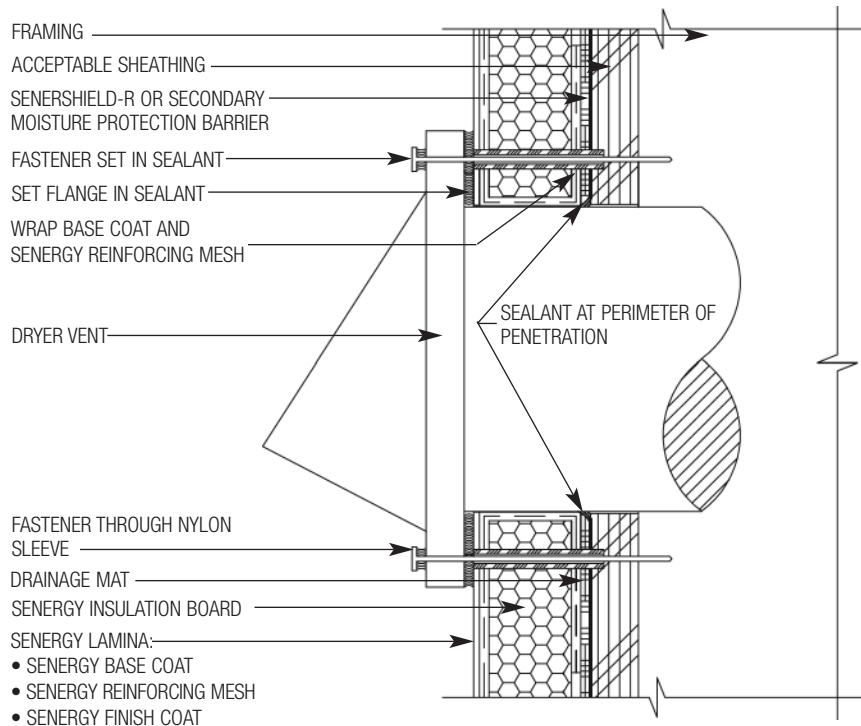


**SIII-18 TYPICAL PIPE PENETRATION**

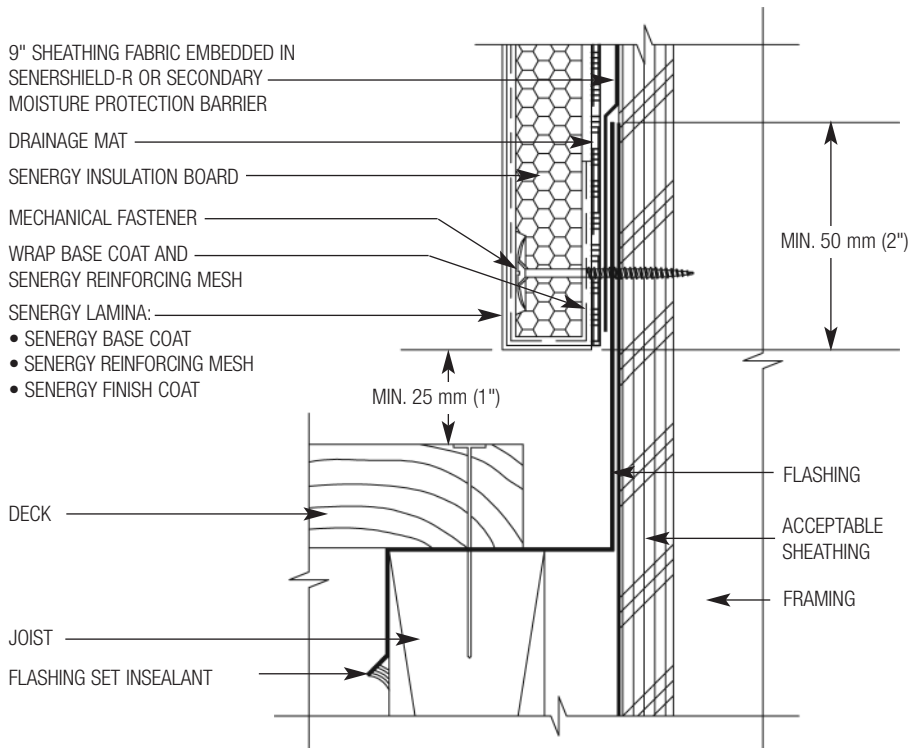


**SIII-19 TYPICAL LIGHT FIXTURE**

NOTE: FRAMING, ACCEPTABLE SHEATHING AND SEALANT BY OTHERS

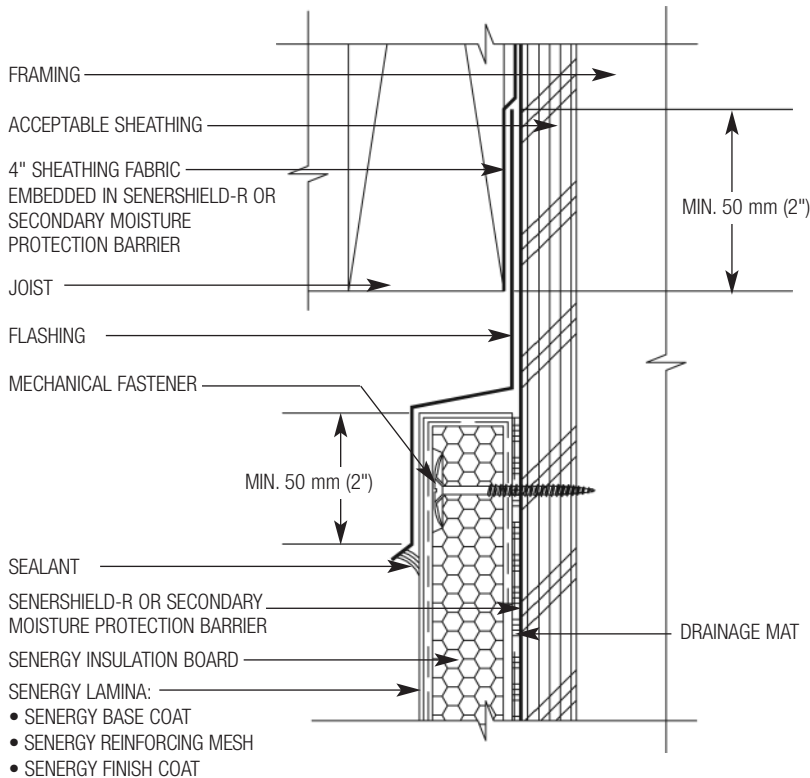


**SIII-20 TYPICAL DRYER VENT**

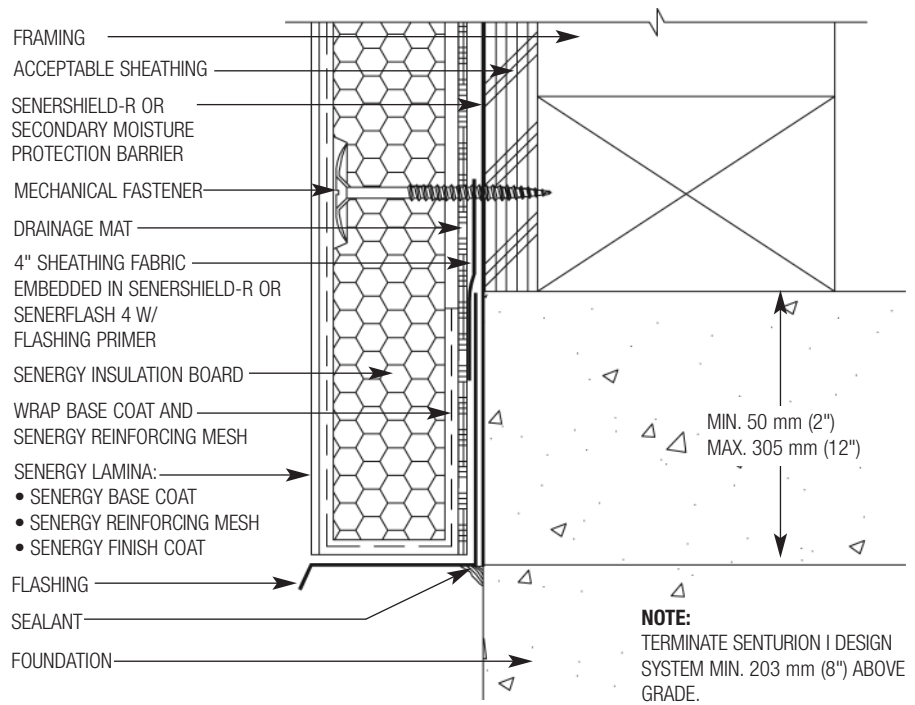


**SIII-21 TYPICAL TERMINATION AT TOP OF DECK**

NOTE: FRAMING, ACCEPTABLE SHEATHING AND SEALANT BY OTHERS

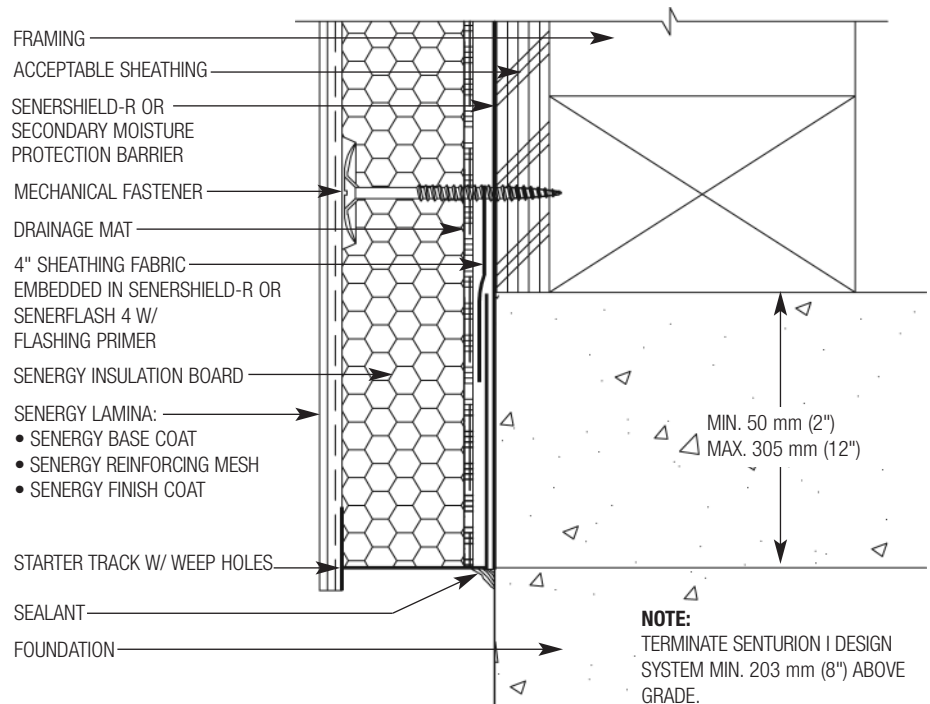


**SIII-22 TYPICAL TERMINATION AT BOTTOM OF DECK**

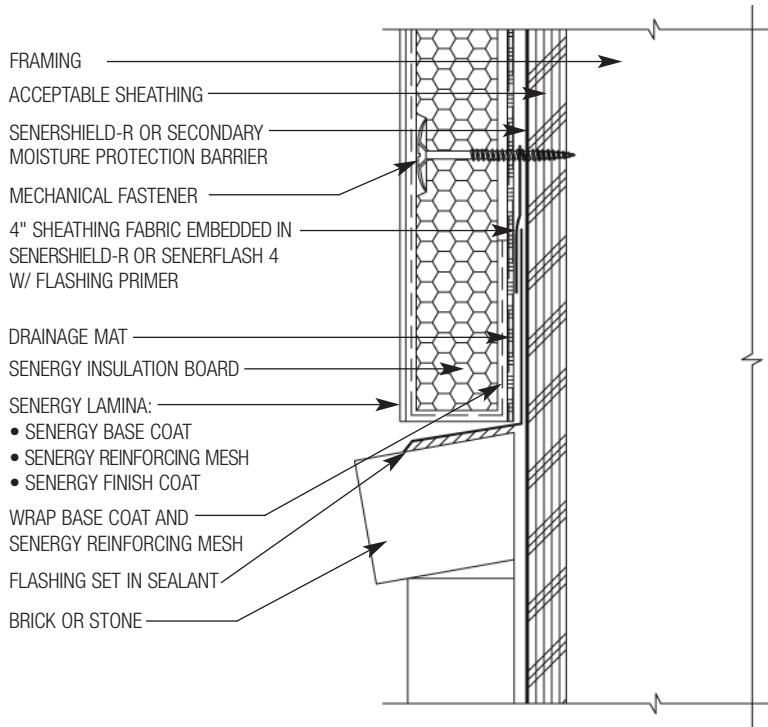


### SIII-23 TYPICAL TERMINATION AT FOUNDATION

NOTE: FRAMING, ACCEPTABLE SHEATHING  
AND SEALANT BY OTHERS

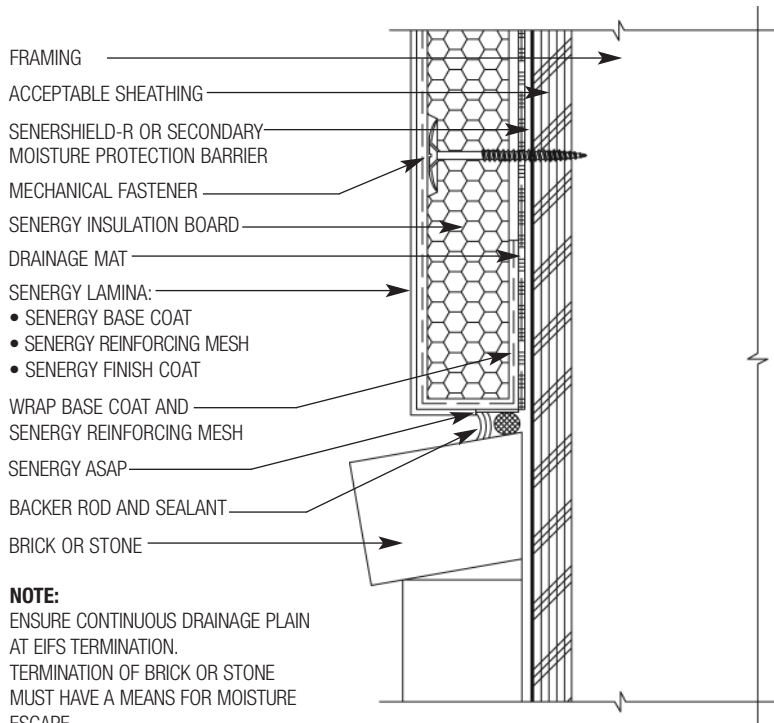


### SIII-24 TYPICAL TERMINATION AT FOUNDATION



**SII-25 TYPICAL TERMINATION AT BRICK OR STONE**

NOTE: FRAMING, ACCEPTABLE SHEATHING AND SEALANT BY OTHERS

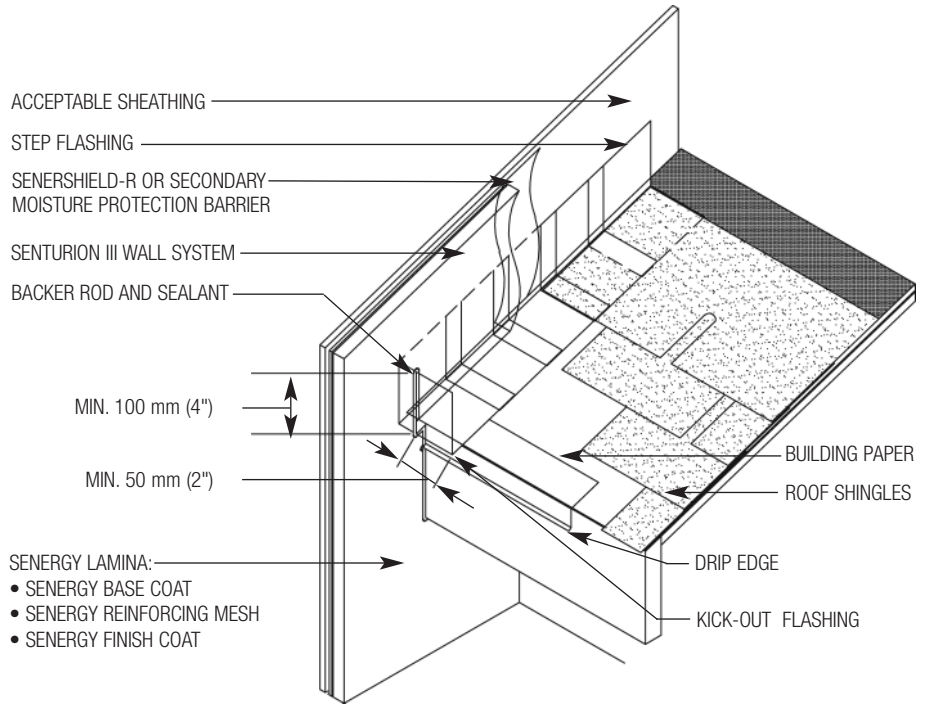


**NOTE:**  
ENSURE CONTINUOUS DRAINAGE PLAIN AT EIFS TERMINATION. TERMINATION OF BRICK OR STONE MUST HAVE A MEANS FOR MOISTURE ESCAPE.

**SII-26 TYPICAL TERMINATION AT BRICK OR STONE**

**NOTE:**

- KICK-OUT FLASHING MUST BE ANGLED 100° MIN. TO ALLOW FOR PROPER DRAINAGE.
- KICK-OUT FLASHING SEAMS MUST BE SOLDERED OR SEALED WITH APPROPRIATE SEALANT.
- TERMINATE SENTURION III WALL SYSTEM MIN. 50 mm (2") ABOVE ROOF.



**SIII-27 TYPICAL KICK-OUT FLASHING DETAIL**

NOTE: FRAMING, ACCEPTABLE SHEATHING  
AND SEALANT BY OTHERS

**Note**

BASF Wall Systems is an operating unit of BASF Construction Chemicals, LLC. (herein after referred to as "BASF Wall Systems")

**Residential Policy**

On one and two-family residential framed construction, BASF Wall Systems requires that the wall system selected be one that includes provisions for moisture drainage. The choices include Senturion® line of water managed EIFS, commercial Senerflex® Wall Systems integrating moisture management features, Senergy Stucco Wall System, and Senergy Cement-Board Stucco™ Systems. Senergy Exterior Surfacing Systems for insulating concrete forms are also acceptable. There are no exceptions to this policy. Under no circumstances will BASF Wall Systems warrant the use of any other system on this type of construction without expressed written authorization from BASF Wall Systems [Residential construction using EIFS on masonry (CMU) or poured concrete does not require the additional water management provisions described above.] See the Senergy Residential Policy Bulletin for a more detailed discussion of this topic. Consult BASF Wall Systems Technical Services Department for specific recommendations concerning all other applications. Consult the Senergy web-site, [www.senergy.cc](http://www.senergy.cc) for additional information about products and systems and for updated literature.

**Disclaimer**

This information and all further technical advice are based on BASF Wall Systems' present knowledge and experience. However, BASF assumes no liability for providing such information and advice including the extent to which such information and advice may relate to existing third party intellectual property rights, especially patent rights. In particular, BASF Wall Systems disclaims any and all CONDITIONS AND WARRANTIES, WHETHER EXPRESS OR IMPLIED, INCLUDING THE IMPLIED WARRANTIES OF FITNESS FOR A PARTICULAR PURPOSE OR MERCHANTABILITY. BASF WALL SYSTEMS SHALL NOT BE RESPONSIBLE FOR CONSEQUENTIAL, INDIRECT OR INCIDENTAL DAMAGES (INCLUDING LOSS OF PROFITS) OF ANY KIND. BASF Wall Systems reserves the right to make any changes according to technological progress or further developments. It is the customer's responsibility and obligation to carefully inspect and test any incoming goods. Performance of the product(s) described herein should be verified by testing and carried out only by qualified experts. It is the sole responsibility of the customer to carry out and arrange for any such testing. Reference to trade names used by other companies is neither a recommendation, nor an endorsement of any product and does not imply that similar products could not be used.

**BASF Wall Systems**

3550 St. Johns Bluff Road South  
Jacksonville, FL 32224-2614  
Phone 800 • 221 • 9255  
Fax 904 • 996 • 6300  
[www.senergy.cc](http://www.senergy.cc)