



Senergy[®]

Senerflex Vulcan NC System

Water Drainage Class PB Exterior Insulation and
Finish System Using Mineral Wool Insulation

Typical Details

A brand of
MASTER[®]
» BUILDERS
SOLUTIONS

(THIS PAGE INTENTIONALLY LEFT BLANK)

Senerflex Vulcan NC System

Typical Details

Water Drainage Class PB Exterior Insulation and Finish System Using Mineral Wool Insulation

Table of Contents

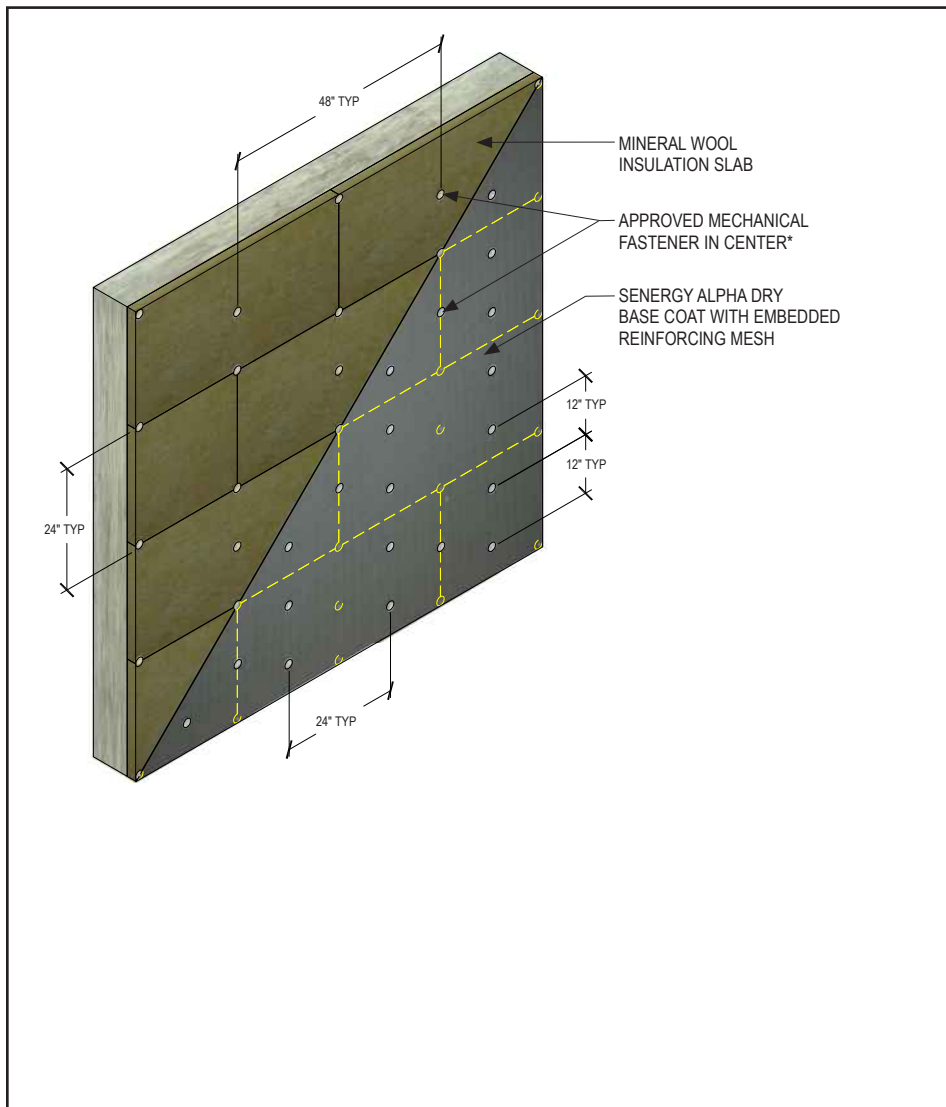
- | | |
|---|---|
| 1. Typical Mineral Wool Slab Application | 16. Typical Window Head (Flush) |
| 2. Typical Mineral Wool Lamella Application | 17. Typical Window Head with Weep Tubes (Flush) |
| 3. Typical Application | 18. Typical Window Head (Recessed) |
| 4. Typical Application over CMU | 19. Typical Window Jamb (Flush) |
| 5. Typical Corner Mesh Application with Flexguard 4, Intermediate 6 or 12 | 20. Typical Window Sill (Flush) |
| 6. Typical Pipe Penetration | 21. Typical Window Jamb (Recessed) |
| 7. Typical Light Fixture | 22. Typical Window Sill (Recessed) |
| 8. Typical Expansion Joint | 23. Typical Parapet Cap |
| 9. Typical Expansion Joint at Change in Substrate | 24. Typical Kick-Out Flashing |
| 10. Typical Expansion Joint at Floorline | 25. Typical Roof Edge Flashing |
| 11. Typical Drainage at Floorline | 26. Typical Section at Fascia / Soffit |
| 12. Typical EIFS Abutment to Brick with Drainage at Floorline | 27. Typical Core Mounted Railing Attachment |
| 13. Typical Termination at Foundation | 28. Typical Railing Attachment |
| 14. Typical EIFS Abutment to Brick with Continuous Drainage | 29. Typical Sign Attachment |
| 15. Typical Termination at Foundation (Flush) | |

Notes:

- **Install Master Builders Solutions materials in accordance with current installation instructions.**
- **Unsatisfactory conditions shall be reported to the General Contractor and corrected before the application of Master Builders Solutions products.**
- **The details within represent Master Builders Solutions Construction Systems US, LLC (hereinafter Master Builders Solutions) latest recommendations. They are presented in good faith by Master Builders Solutions. The details are subject to change without notice. Master Builders Solutions accepts no liability for the end use of the details. For conditions not shown, consult Master Builders Solutions for review of specific detail.**

(THIS PAGE INTENTIONALLY LEFT BLANK)

Senerflex Vulcan NC System TYPICAL MINERAL WOOL SLAB APPLICATION



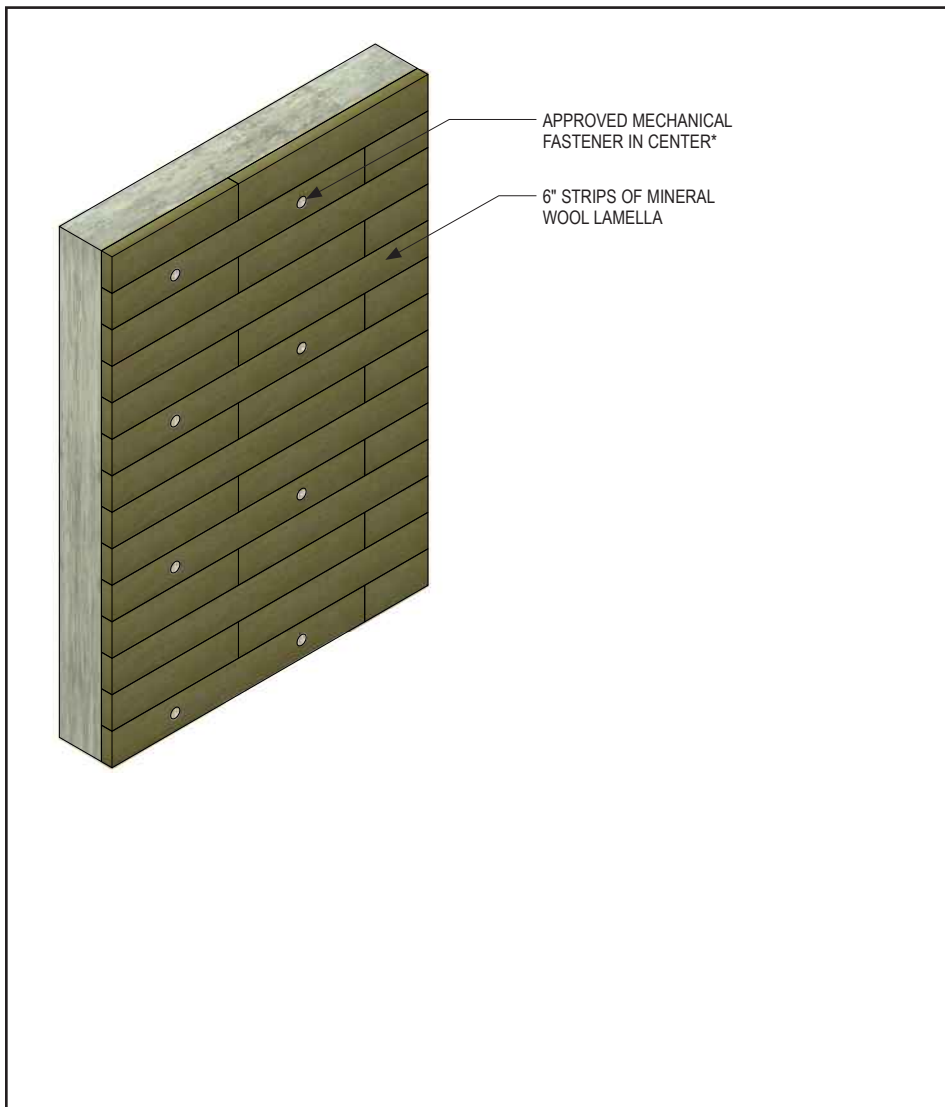
- Verify all materials are installed in accordance with current installation instructions.
- Additional fasteners may be required at corners or other terminations.
- Install fastener plate flush or slightly recessed, maximum 1/16" (1.6 mm).
- Fasteners installed on the outside of the reinforced base coat should be spotted prior to application of final base coat.

VNC-01 2109

(*NOTE: BY OTHERS)

This detail represents Master Builders Solutions Construction Systems US, LLC (hereinafter Master Builders Solutions) latest recommendations. It is presented in good faith by Master Builders Solutions. The detail is subject to change without notice. Master Builders Solutions accepts no liability for the end use of the detail. For conditions not shown, consult Master Builders Solutions for review of specific detail.

Senerflex Vulcan NC System TYPICAL MINERAL WOOL LAMELLA APPLICATION



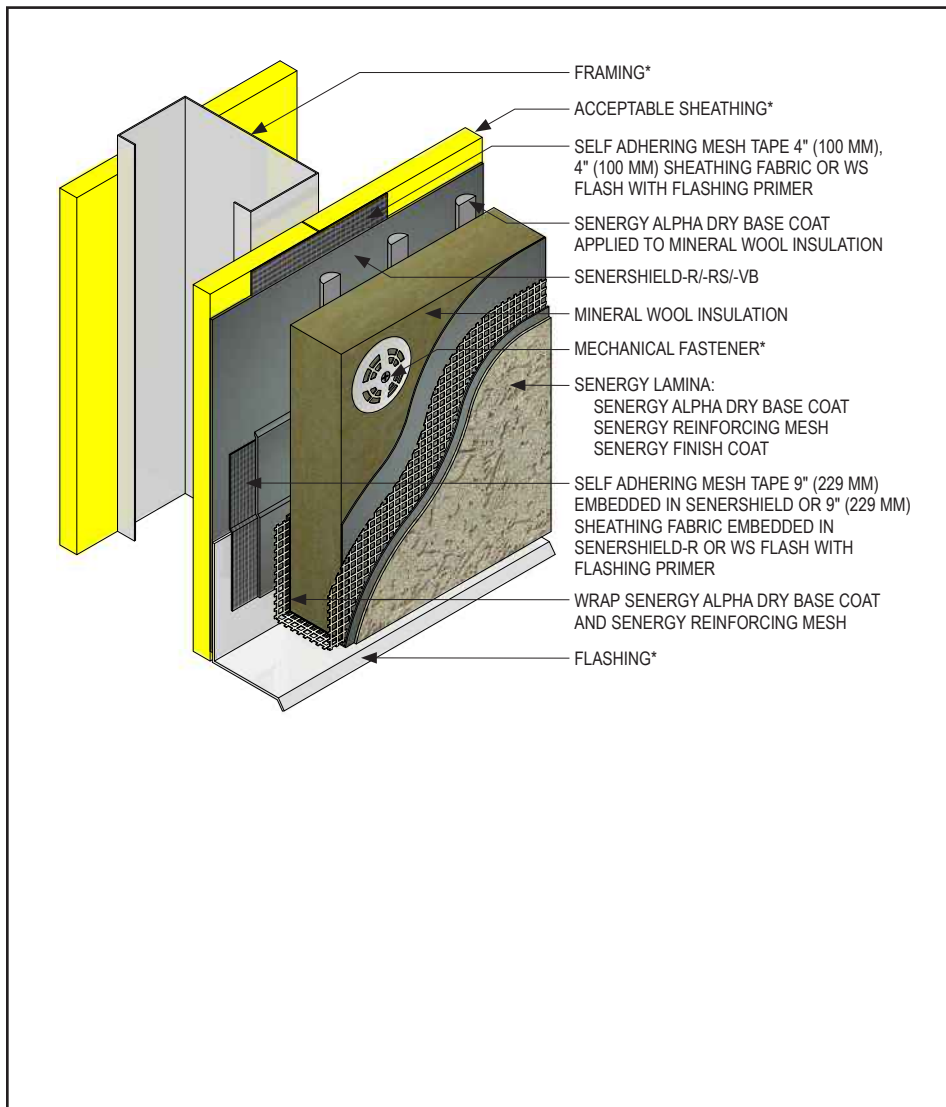
- Verify all materials are installed in accordance with current installation instructions.
- Additional fasteners may be required at corners or other terminations.
- Install fastener plate flush or slightly recessed, maximum 1/16" (1.6 mm).
- Lamella fibre orientation shall be perpendicular to the substrate.
- Fasteners are installed in the first course of Lamella and every fourth course thereafter.

VNC-02 2109

(*NOTE: BY OTHERS)

This detail represents Master Builders Solutions Construction Systems US, LLC (hereinafter Master Builders Solutions) latest recommendations. It is presented in good faith by Master Builders Solutions. The detail is subject to change without notice. Master Builders Solutions accepts no liability for the end use of the detail. For conditions not shown, consult Master Builders Solutions for review of specific detail.

Senerflex Vulcan NC System TYPICAL APPLICATION



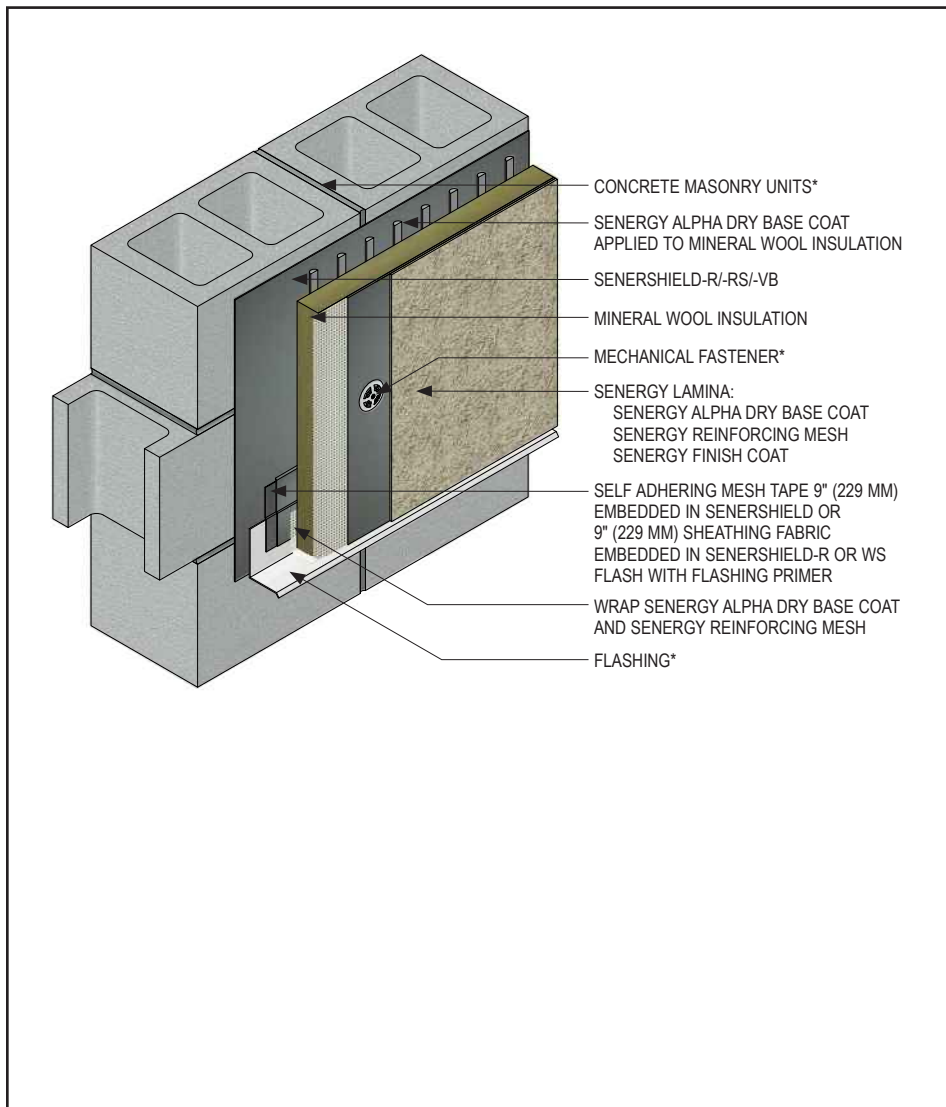
- Verify all materials are installed in accordance with current installation instructions.
- All terminations must be fully encapsulated with mesh reinforced base coat.
- Ensure a means for drainage is provided at System termination.

VNC-03 2109

(*NOTE: BY OTHERS)

This detail represents Master Builders Solutions Construction Systems US, LLC (hereinafter Master Builders Solutions) latest recommendations. It is presented in good faith by Master Builders Solutions. The detail is subject to change without notice. Master Builders Solutions accepts no liability for the end use of the detail. For conditions not shown, consult Master Builders Solutions for review of specific detail.

Senerflex Vulcan NC System TYPICAL APPLICATION OVER CMU



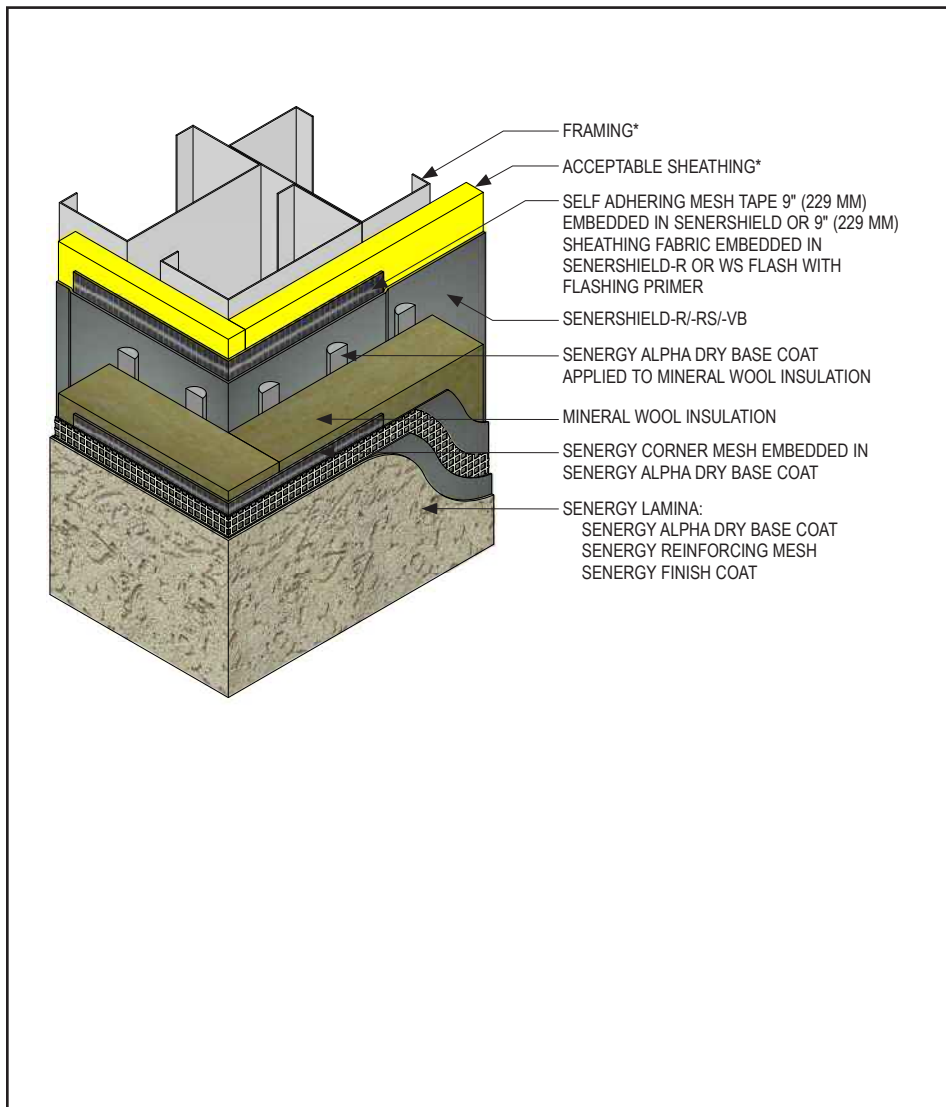
- Verify all materials are installed in accordance with current installation instructions.
- All terminations must be fully encapsulated with mesh reinforced base coat.
- Ensure a means for drainage is provided at System termination.

VNC-04 2109

(*NOTE: BY OTHERS)

This detail represents Master Builders Solutions Construction Systems US, LLC (hereinafter Master Builders Solutions) latest recommendations. It is presented in good faith by Master Builders Solutions. The detail is subject to change without notice. Master Builders Solutions accepts no liability for the end use of the detail. For conditions not shown, consult Master Builders Solutions for review of specific detail.

Senerflex Vulcan NC System TYPICAL CORNER MESH APPLICATION WITH FLEXGUARD 4, INTERMEDIATE 6 OR 12



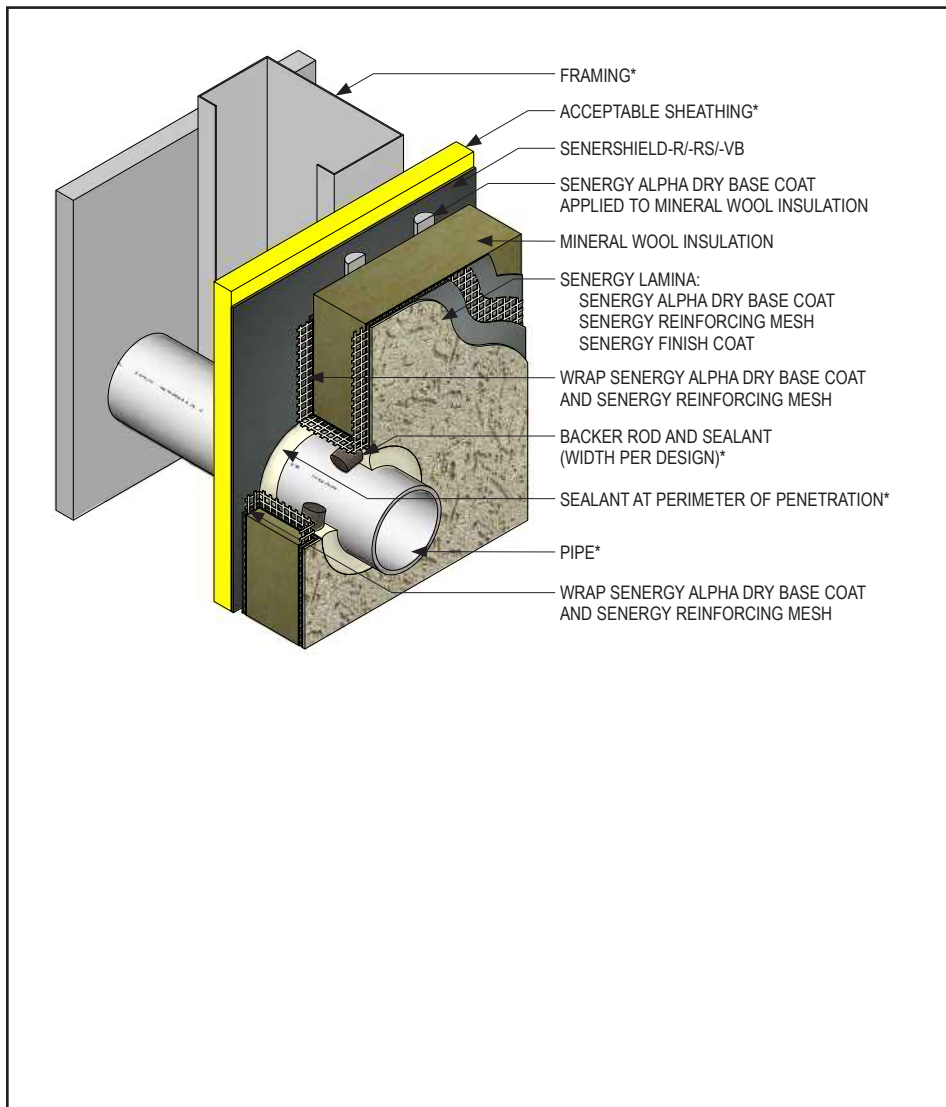
- Verify all materials are installed in accordance with current installation instructions.
- Ensure Flexguard 4, Intermediate 6 or 12 reinforcing mesh is lapped a minimum of 8" (203 mm) around corners.

VNC-05 2109

(*NOTE: BY OTHERS)

This detail represents Master Builders Solutions Construction Systems US, LLC (hereinafter Master Builders Solutions) latest recommendations. It is presented in good faith by Master Builders Solutions. The detail is subject to change without notice. Master Builders Solutions accepts no liability for the end use of the detail. For conditions not shown, consult Master Builders Solutions for review of specific detail.

Senerflex Vulcan NC System TYPICAL PIPE PENETRATION



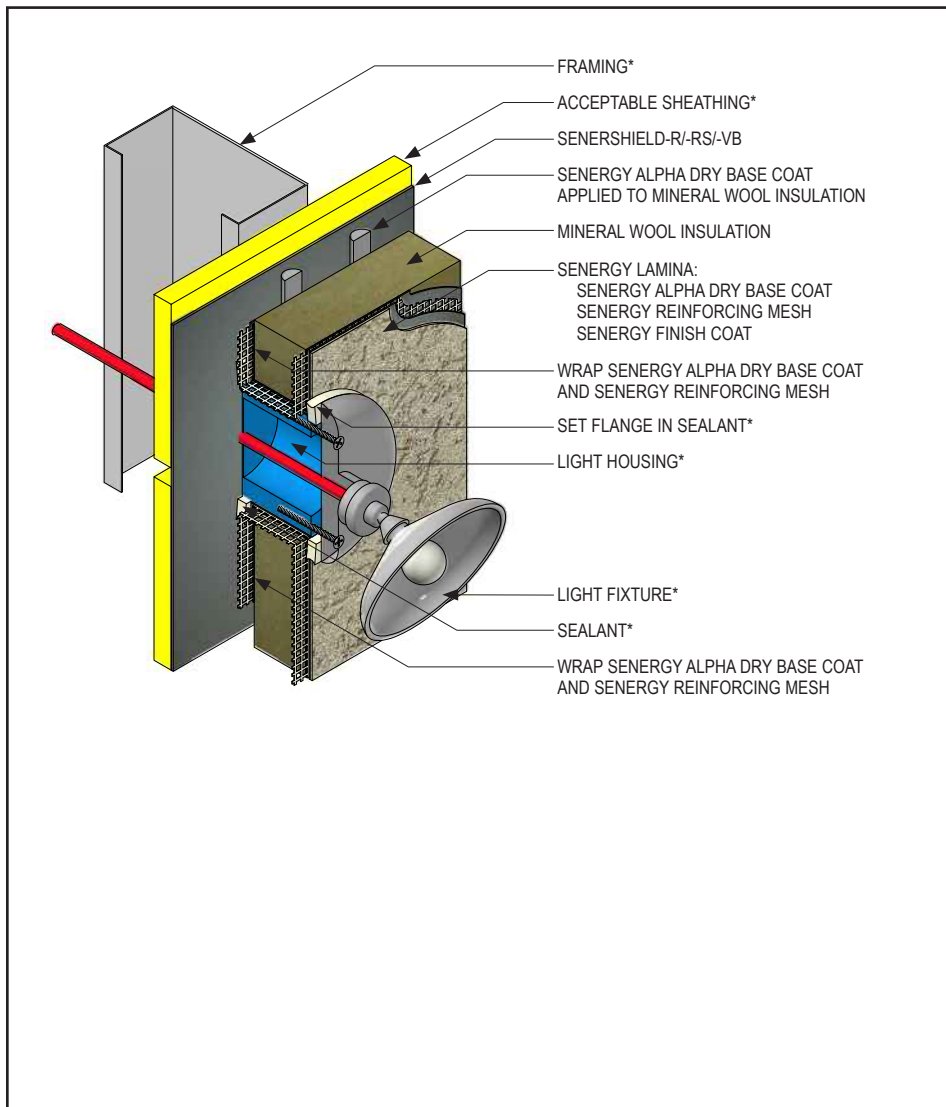
- Verify all materials are installed in accordance with current installation instructions.
- All terminations must be fully encapsulated with mesh reinforced basecoat.
- Ensure all penetrations into the system are properly sealed.
- Provide continuous seal around perimeter of penetration prior to mineral wool insulation application.
- Do not apply finish to areas that will receive sealant.

VNC-06 2109

(*NOTE: BY OTHERS)

This detail represents Master Builders Solutions Construction Systems US, LLC (hereinafter Master Builders Solutions) latest recommendations. It is presented in good faith by Master Builders Solutions. The detail is subject to change without notice. Master Builders Solutions accepts no liability for the end use of the detail. For conditions not shown, consult Master Builders Solutions for review of specific detail.

Senerflex Vulcan NC System TYPICAL LIGHT FIXTURE



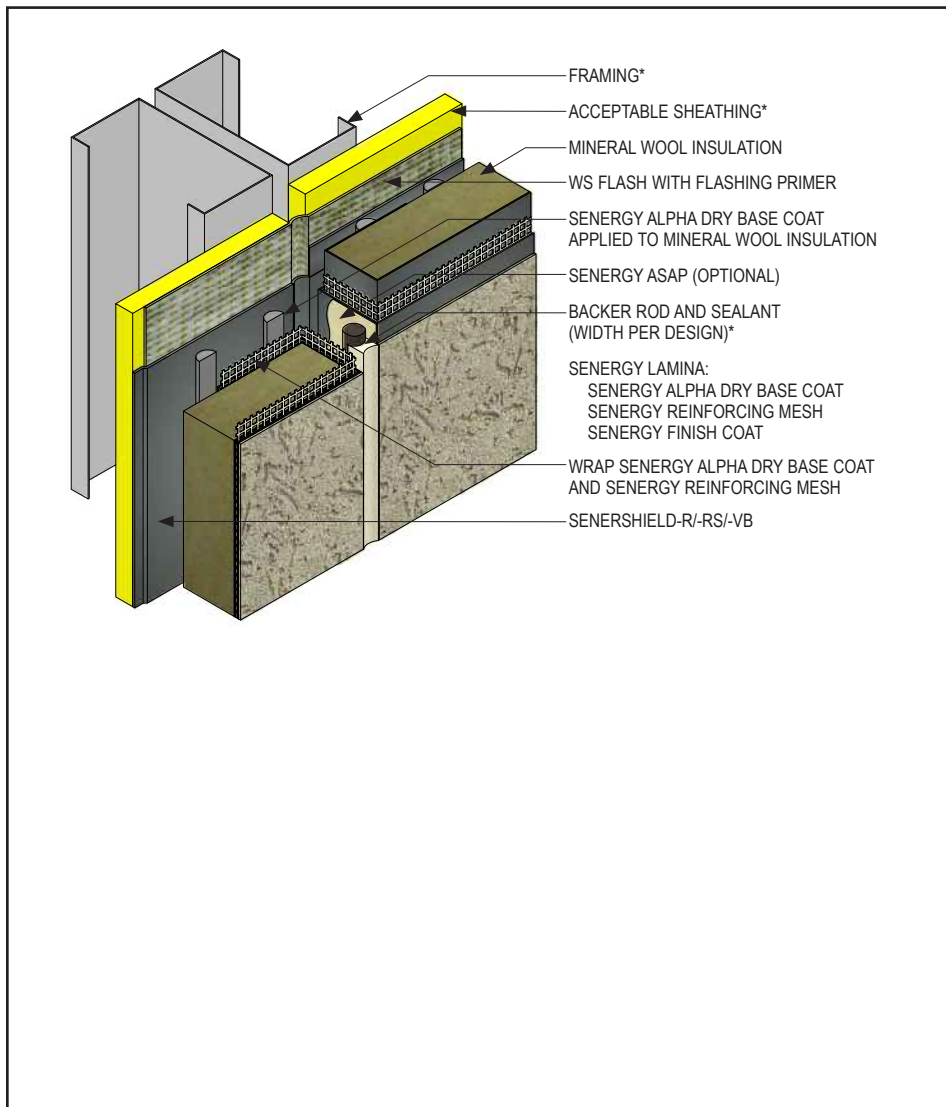
- Verify all materials are installed in accordance with current installation instructions.
- All terminations must be fully encapsulated with mesh reinforced basecoat.
- Ensure all penetrations into the system are properly sealed.

VNC-07 2109

(*NOTE: BY OTHERS)

This detail represents Master Builders Solutions Construction Systems US, LLC (hereinafter Master Builders Solutions) latest recommendations. It is presented in good faith by Master Builders Solutions. The detail is subject to change without notice. Master Builders Solutions accepts no liability for the end use of the detail. For conditions not shown, consult Master Builders Solutions for review of specific detail.

Senerflex Vulcan NC System TYPICAL EXPANSION JOINT



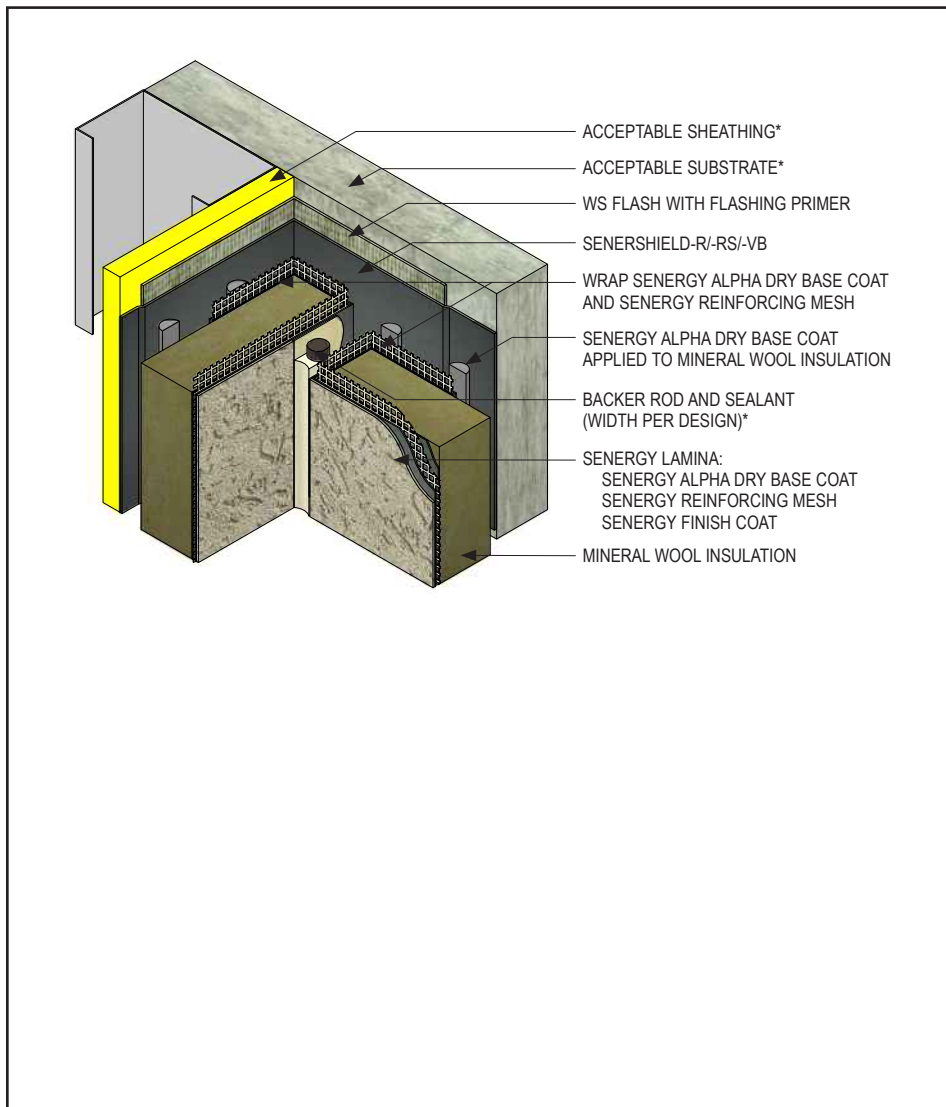
- Verify all materials are installed in accordance with current installation instructions.
- All terminations must be fully encapsulated with mesh reinforced base coat.
- Do not apply finish to areas that will receive sealant.
- Ensure drainage plane is continuous and unobstructed at expansion joint.
- Install expansion joints in the system at all changes in substrate, through existing expansion joints, floor lines in multi-level wood frame construction, and where movement is anticipated. It is the sole responsibility of the design professional to determine specific expansion joint location, placement and design.

VNC-08 2109

(*NOTE: BY OTHERS)

This detail represents Master Builders Solutions Construction Systems US, LLC (hereinafter Master Builders Solutions) latest recommendations. It is presented in good faith by Master Builders Solutions. The detail is subject to change without notice. Master Builders Solutions accepts no liability for the end use of the detail. For conditions not shown, consult Master Builders Solutions for review of specific detail.

Senerflex Vulcan NC System TYPICAL EXPANSION JOINT AT CHANGE IN SUBSTRATE



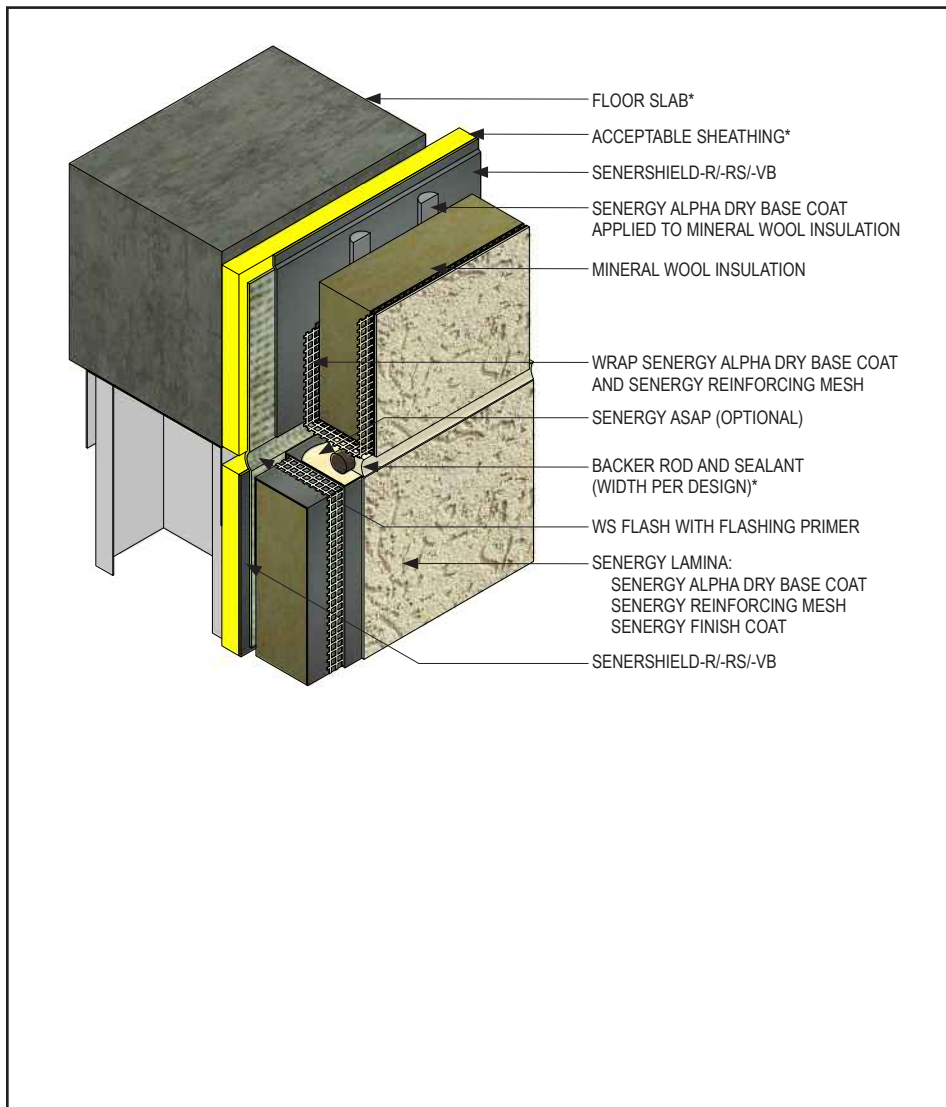
- Verify all materials are installed in accordance with current installation instructions.
- All terminations must be fully encapsulated with mesh reinforced base coat.
- Do not apply finish to areas that will receive sealant.
- Ensure drainage plane is continuous and unobstructed at expansion joint.
- Install expansion joints in the system at all changes in substrate, through existing expansion joints, floor lines in multi-level wood frame construction, and where movement is anticipated. It is the sole responsibility of the design professional to determine specific expansion joint location, placement and design.

VNC-09 2109

(*NOTE: BY OTHERS)

This detail represents Master Builders Solutions Construction Systems US, LLC (hereinafter Master Builders Solutions) latest recommendations. It is presented in good faith by Master Builders Solutions. The detail is subject to change without notice. Master Builders Solutions accepts no liability for the end use of the detail. For conditions not shown, consult Master Builders Solutions for review of specific detail.

Senerflex Vulcan NC System TYPICAL EXPANSION JOINT AT FLOORLINE



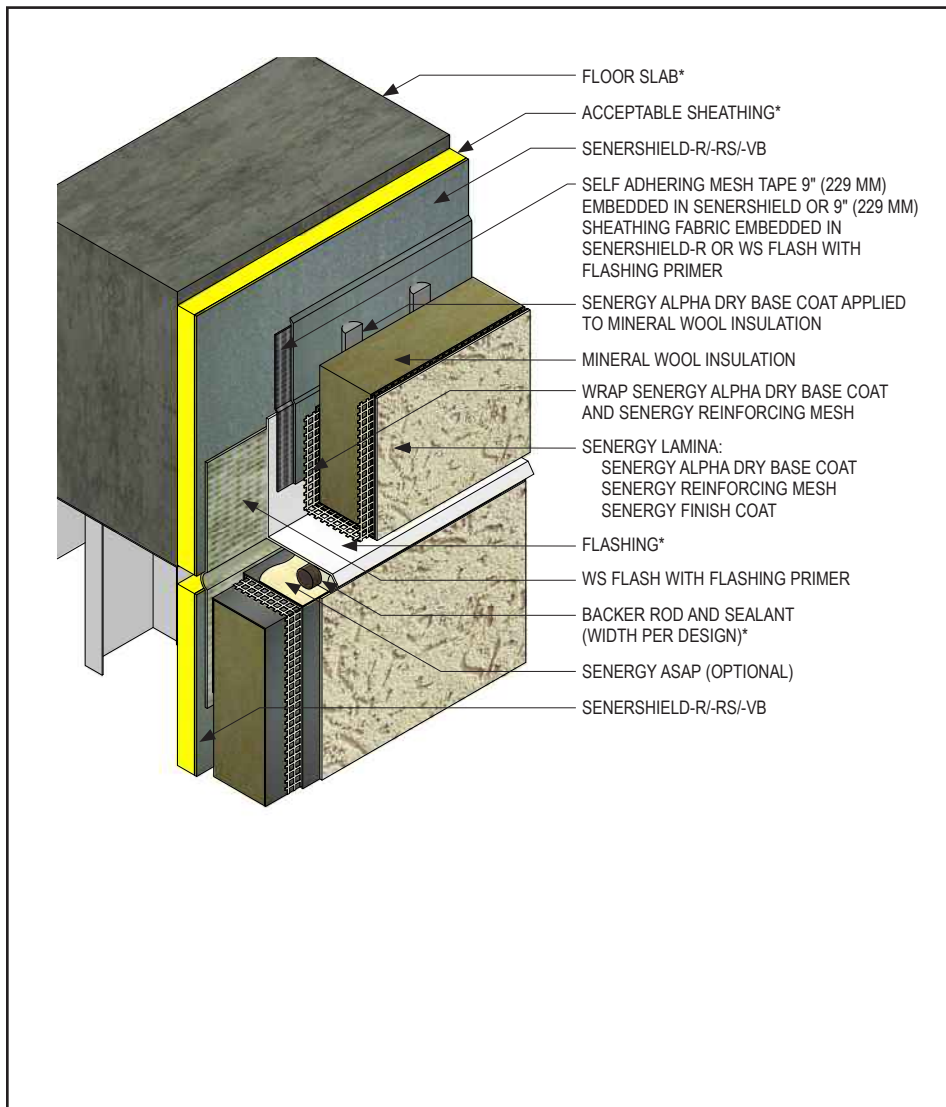
- Verify all materials are installed in accordance with current installation instructions.
- All terminations must be fully encapsulated with mesh reinforced base coat.
- Do not apply finish to areas that will receive sealant.
- Ensure drainage plane is continuous and unobstructed at expansion joint.
- Install expansion joints in the system at all changes in substrate, through existing expansion joints, floor lines in multi-level wood frame construction, and where movement is anticipated. It is the sole responsibility of the design professional to determine specific expansion joint location, placement and design.
- It is recommended that a means for drainage is provided at every third floor (See Detail VNC-11).

VNC-10 2109

(*NOTE: BY OTHERS)

This detail represents Master Builders Solutions Construction Systems US, LLC (hereinafter Master Builders Solutions) latest recommendations. It is presented in good faith by Master Builders Solutions. The detail is subject to change without notice. Master Builders Solutions accepts no liability for the end use of the detail. For conditions not shown, consult Master Builders Solutions for review of specific detail.

Senerflex Vulcan NC System TYPICAL DRAINAGE AT FLOORLINE



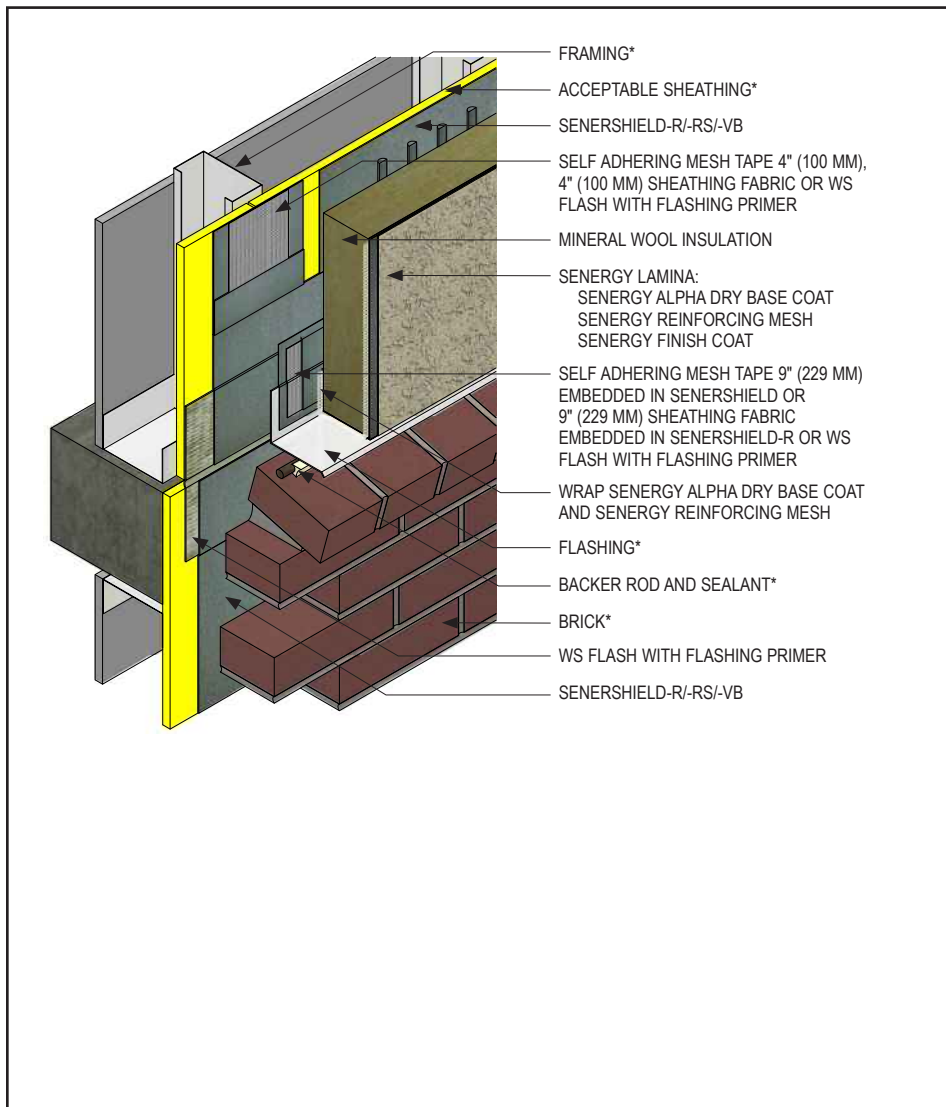
- Verify all materials are installed in accordance with current installation instructions.
- All terminations must be fully encapsulated with mesh reinforced base coat.
- Do not apply finish to areas that will receive sealant.
- Install expansion joints in the system at all changes in substrate, through existing expansion joints, floor lines in multi-level wood frame construction, and where movement is anticipated. It is the sole responsibility of the design professional to determine specific expansion joint location, placement and design.
- It is recommended that a means for drainage is provided at every third floor.

VNC-11 2109

(*NOTE: BY OTHERS)

This detail represents Master Builders Solutions Construction Systems US, LLC (hereinafter Master Builders Solutions) latest recommendations. It is presented in good faith by Master Builders Solutions. The detail is subject to change without notice. Master Builders Solutions accepts no liability for the end use of the detail. For conditions not shown, consult Master Builders Solutions for review of specific detail.

Senerflex Vulcan NC System TYPICAL EIFS ABUTMENT TO BRICK WITH DRAINAGE AT FLOORLINE



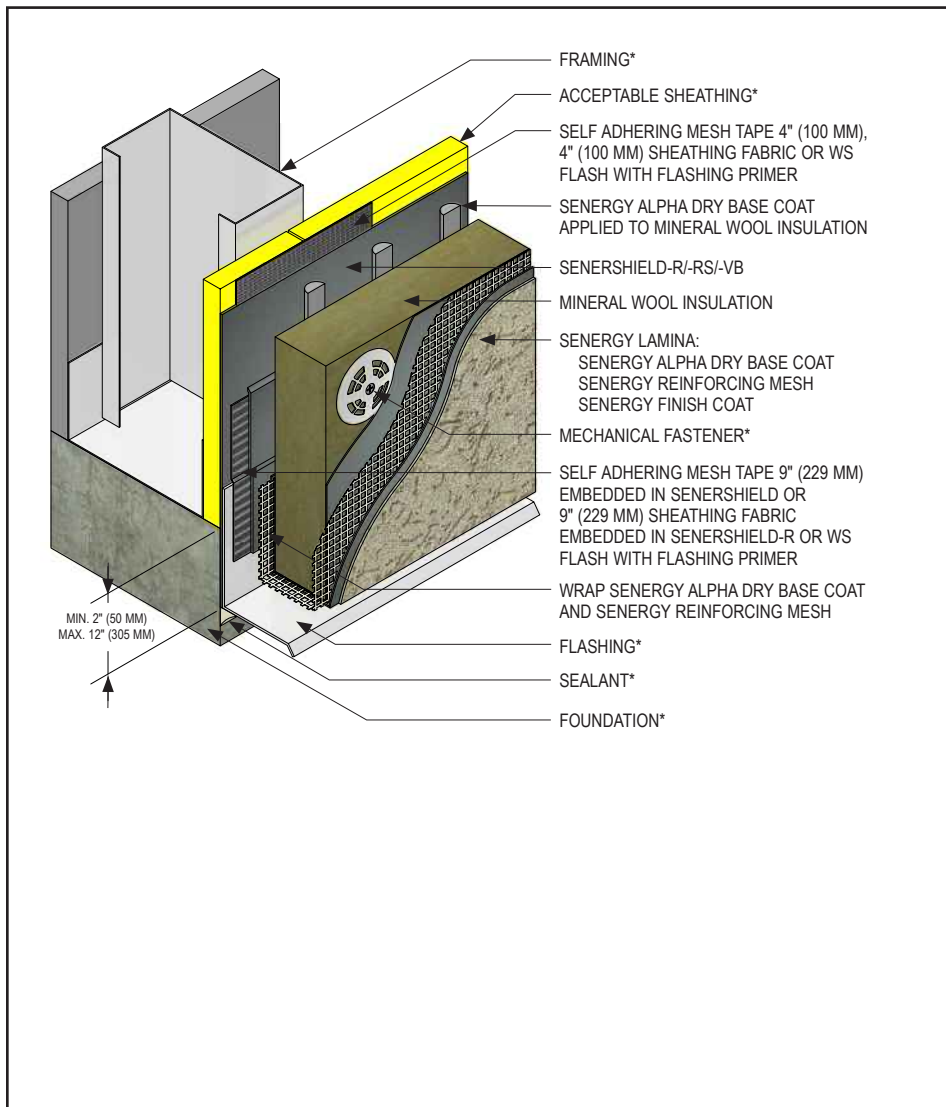
- Verify all materials are installed in accordance with current installation instructions.
- All terminations must be fully encapsulated with mesh reinforced base coat.
- Ensure a means for drainage is provided at system termination at brick.
- Brick ties not shown for clarity.
- Brick must be installed per local code requirements.

VNC-12 2109

(*NOTE: BY OTHERS)

This detail represents Master Builders Solutions Construction Systems US, LLC (hereinafter Master Builders Solutions) latest recommendations. It is presented in good faith by Master Builders Solutions. The detail is subject to change without notice. Master Builders Solutions accepts no liability for the end use of the detail. For conditions not shown, consult Master Builders Solutions for review of specific detail.

Senerflex Vulcan NC System TYPICAL TERMINATION AT FOUNDATION



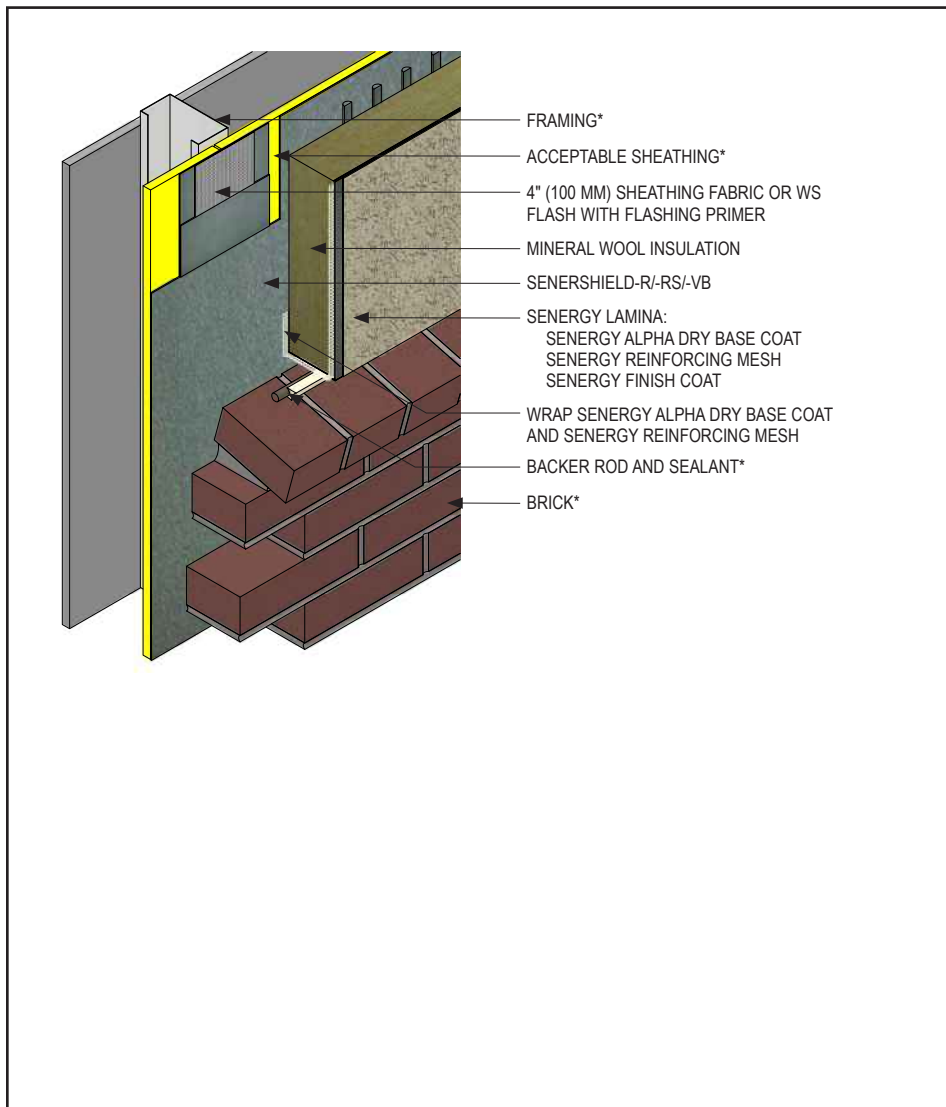
- Verify all materials are installed in accordance with current installation instructions.
- All terminations must be fully encapsulated with mesh reinforced base coat.
- Ensure a means for drainage is provided at system termination at foundation.
- Terminate system a minimum of 8" (203 mm) above grade.
- Extend system a minimum of 2" (50 mm) and a maximum of 12" (305 mm) at the sole plate foundation transition.

VNC-13 2109

(*NOTE: BY OTHERS)

This detail represents Master Builders Solutions Construction Systems US, LLC (hereinafter Master Builders Solutions) latest recommendations. It is presented in good faith by Master Builders Solutions. The detail is subject to change without notice. Master Builders Solutions accepts no liability for the end use of the detail. For conditions not shown, consult Master Builders Solutions for review of specific detail.

Senerflex Vulcan NC System TYPICAL EIFS ABUTMENT TO BRICK WITH CONTINUOUS DRAINAGE



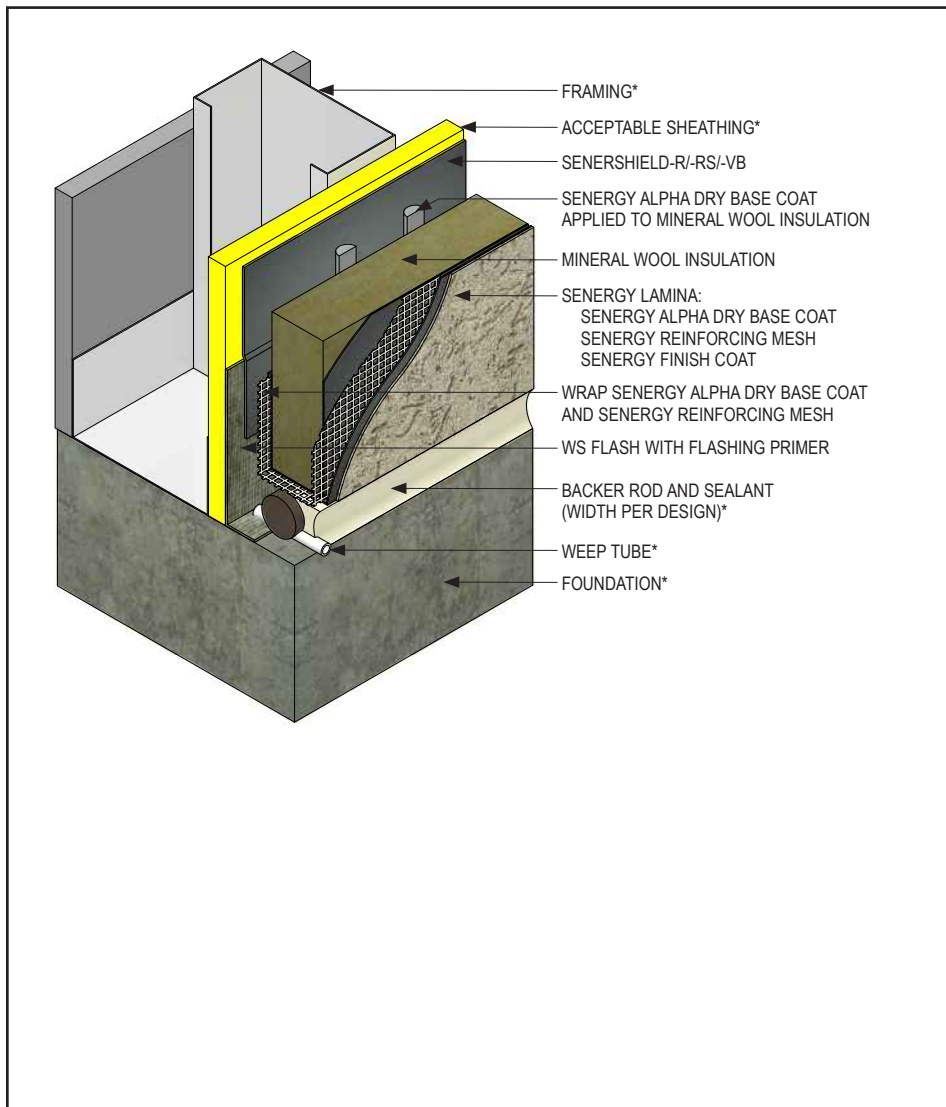
- Verify all materials are installed in accordance with current installation instructions.
- All terminations must be fully encapsulated with mesh reinforced base coat.
- Ensure a continuous drainage plane is maintained at system abutment to brick.
- Brick ties not shown for clarity.
- Brick must be installed per local code requirements.

VNC-14 2109

(*NOTE: BY OTHERS)

This detail represents Master Builders Solutions Construction Systems US, LLC (hereinafter Master Builders Solutions) latest recommendations. It is presented in good faith by Master Builders Solutions. The detail is subject to change without notice. Master Builders Solutions accepts no liability for the end use of the detail. For conditions not shown, consult Master Builders Solutions for review of specific detail.

Senerflex Vulcan NC System TYPICAL TERMINATION AT FOUNDATION (FLUSH)



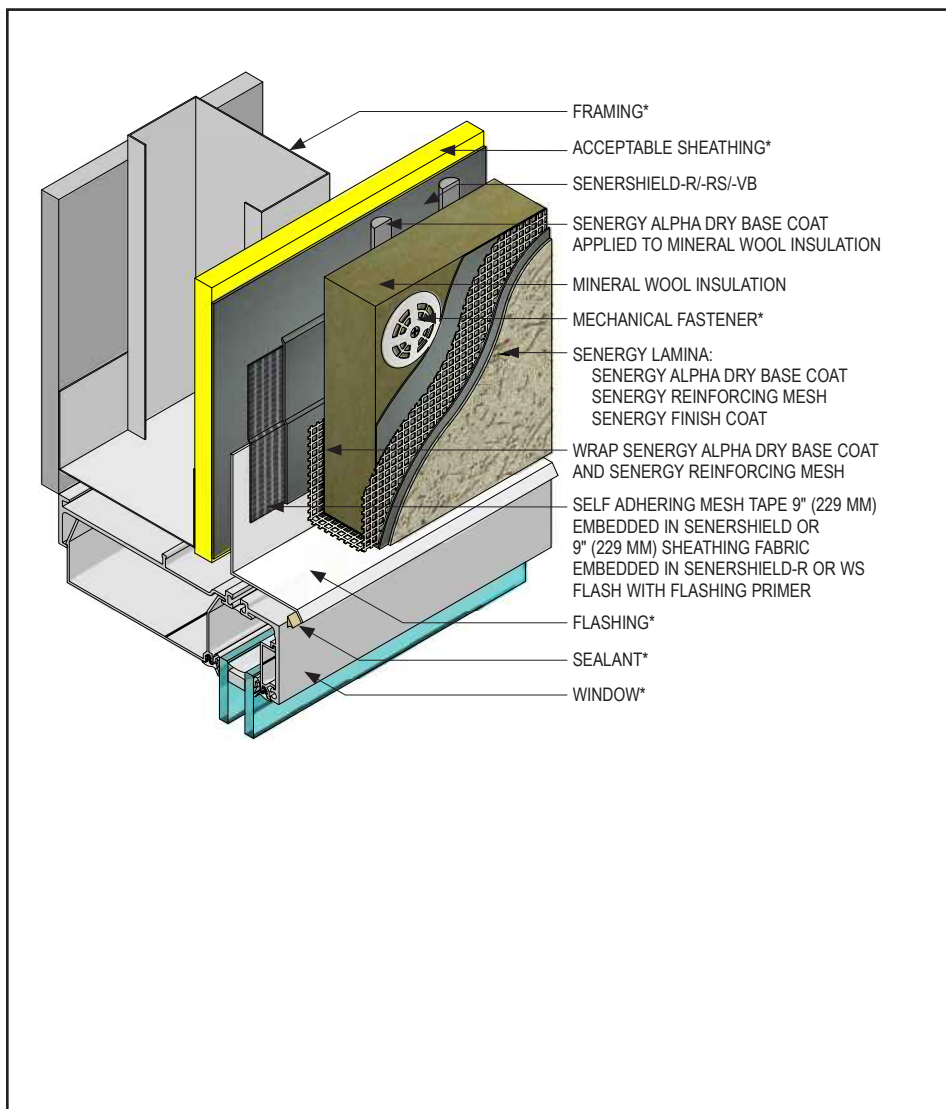
- Verify all materials are installed in accordance with current installation instructions.
- All terminations must be fully encapsulated with mesh reinforced base coat.
- Ensure a means for drainage is provided at system termination at foundation.
- Place weep tubes a maximum of 24" (610 mm) on center.
- Do not apply finish to areas that will receive sealant.

VNC-15 2109

(*NOTE: BY OTHERS)

This detail represents Master Builders Solutions Construction Systems US, LLC (hereinafter Master Builders Solutions) latest recommendations. It is presented in good faith by Master Builders Solutions. The detail is subject to change without notice. Master Builders Solutions accepts no liability for the end use of the detail. For conditions not shown, consult Master Builders Solutions for review of specific detail.

Senerflex Vulcan NC System TYPICAL WINDOW HEAD (FLUSH)



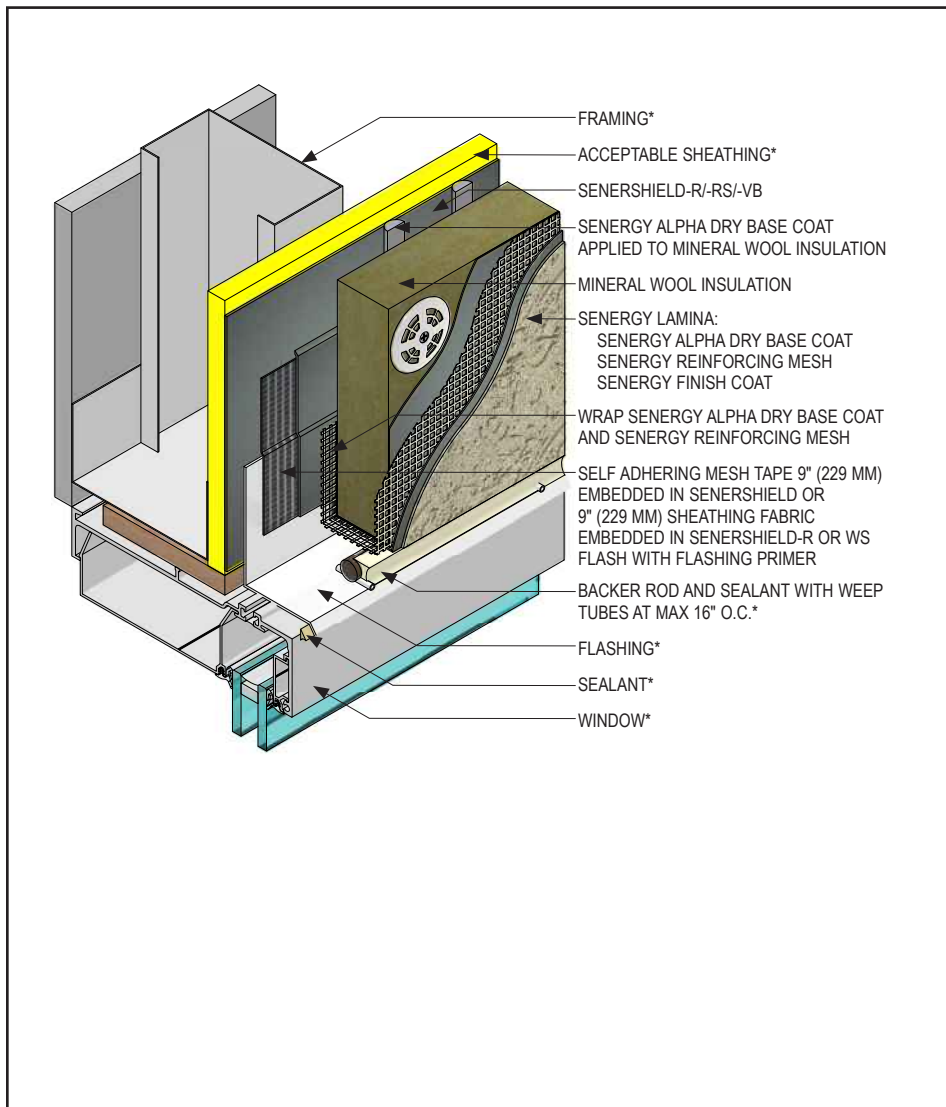
- Verify all materials are installed in accordance with current installation instructions.
- All terminations must be fully encapsulated with mesh reinforced base coat.
- Ensure a means for drainage is provided at system termination at window head.
- Provide end-dams at flashing terminations.
- Provide continuous air seal around interior perimeter of window. Contact window manufacturer for specific installation instructions.

VNC-16 2109

(*NOTE: BY OTHERS)

This detail represents Master Builders Solutions Construction Systems US, LLC (hereinafter Master Builders Solutions) latest recommendations. It is presented in good faith by Master Builders Solutions. The detail is subject to change without notice. Master Builders Solutions accepts no liability for the end use of the detail. For conditions not shown, consult Master Builders Solutions for review of specific detail.

Senerflex Vulcan NC System TYPICAL WINDOW HEAD (FLUSH) WITH WEEP TUBES



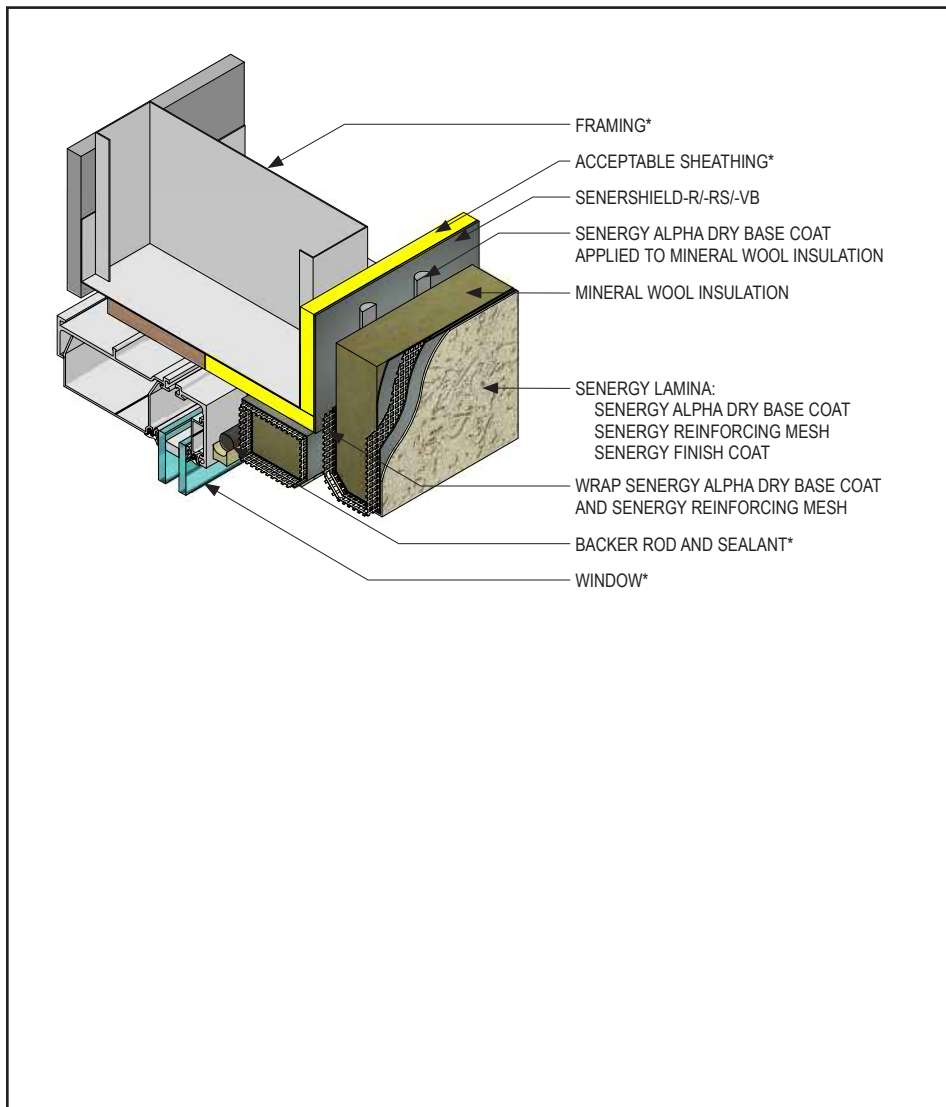
- Verify all materials are installed in accordance with current installation instructions.
- All terminations must be fully encapsulated with mesh reinforced base coat.
- Ensure a means for drainage is provided at system termination at window head.
- Provide end-dams at flashing terminations.
- Provide continuous air seal around interior perimeter of window. Contact window manufacturer for specific installation instructions.
- Do not apply finish to areas that will receive sealant.

VNC-17 2109

(*NOTE: BY OTHERS)

This detail represents Master Builders Solutions Construction Systems US, LLC (hereinafter Master Builders Solutions) latest recommendations. It is presented in good faith by Master Builders Solutions. The detail is subject to change without notice. Master Builders Solutions accepts no liability for the end use of the detail. For conditions not shown, consult Master Builders Solutions for review of specific detail.

Senerflex Vulcan NC System TYPICAL WINDOW HEAD (RECESSED)



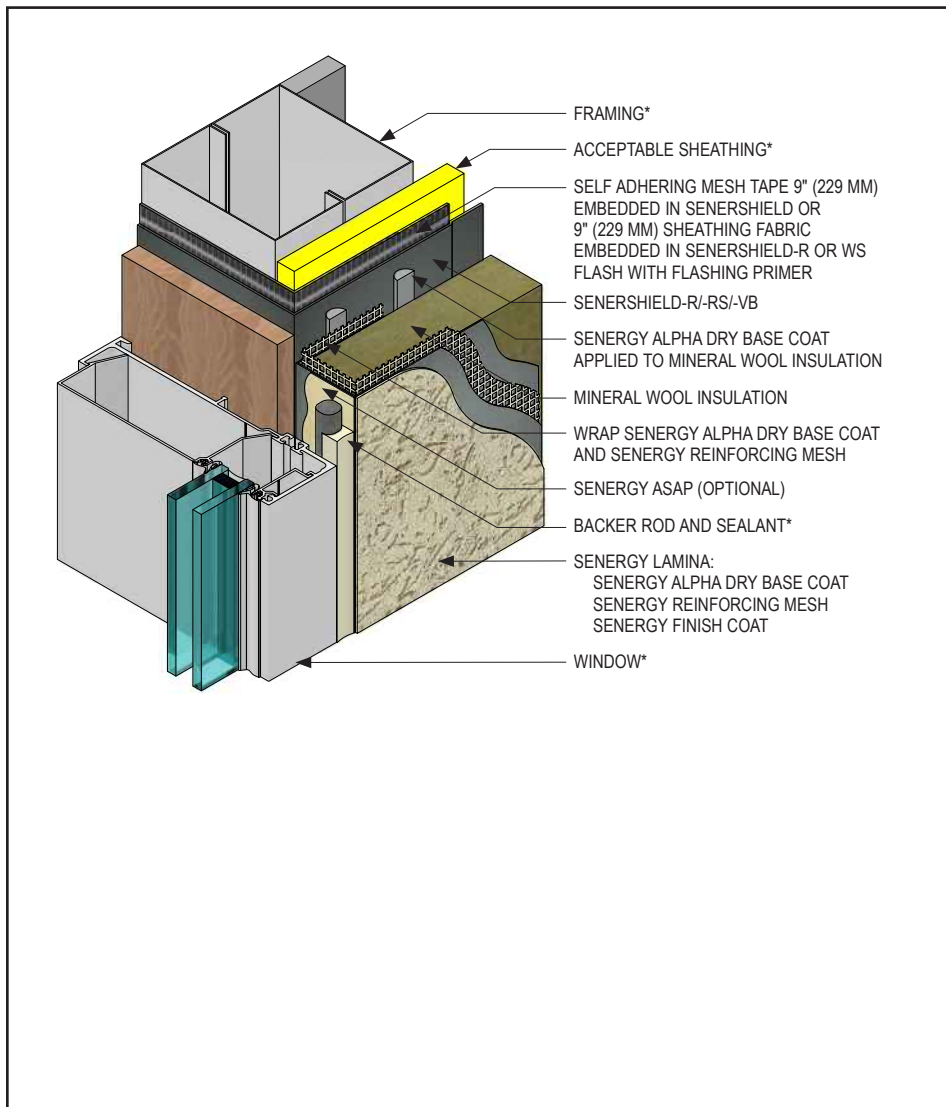
- Verify all materials are installed in accordance with current installation instructions.
- All terminations must be fully encapsulated with mesh reinforced base coat.
- Do not apply finish to areas that will receive sealant.
- Ensure a means for drainage is provided at system termination at soffit/fascia transition.
- Provide a back wrapped type joint with backer rod and sealant at system terminations to dissimilar materials, ensuring that a water tight seal is achieved (width per design).
- Provide continuous air seal around interior perimeter of interior window. Contact window manufacturer for specific installation instructions.

VNC-18 2109

(*NOTE: BY OTHERS)

This detail represents Master Builders Solutions Construction Systems US, LLC (hereinafter Master Builders Solutions) latest recommendations. It is presented in good faith by Master Builders Solutions. The detail is subject to change without notice. Master Builders Solutions accepts no liability for the end use of the detail. For conditions not shown, consult Master Builders Solutions for review of specific detail.

Senerflex Vulcan NC System TYPICAL WINDOW JAMB (FLUSH)



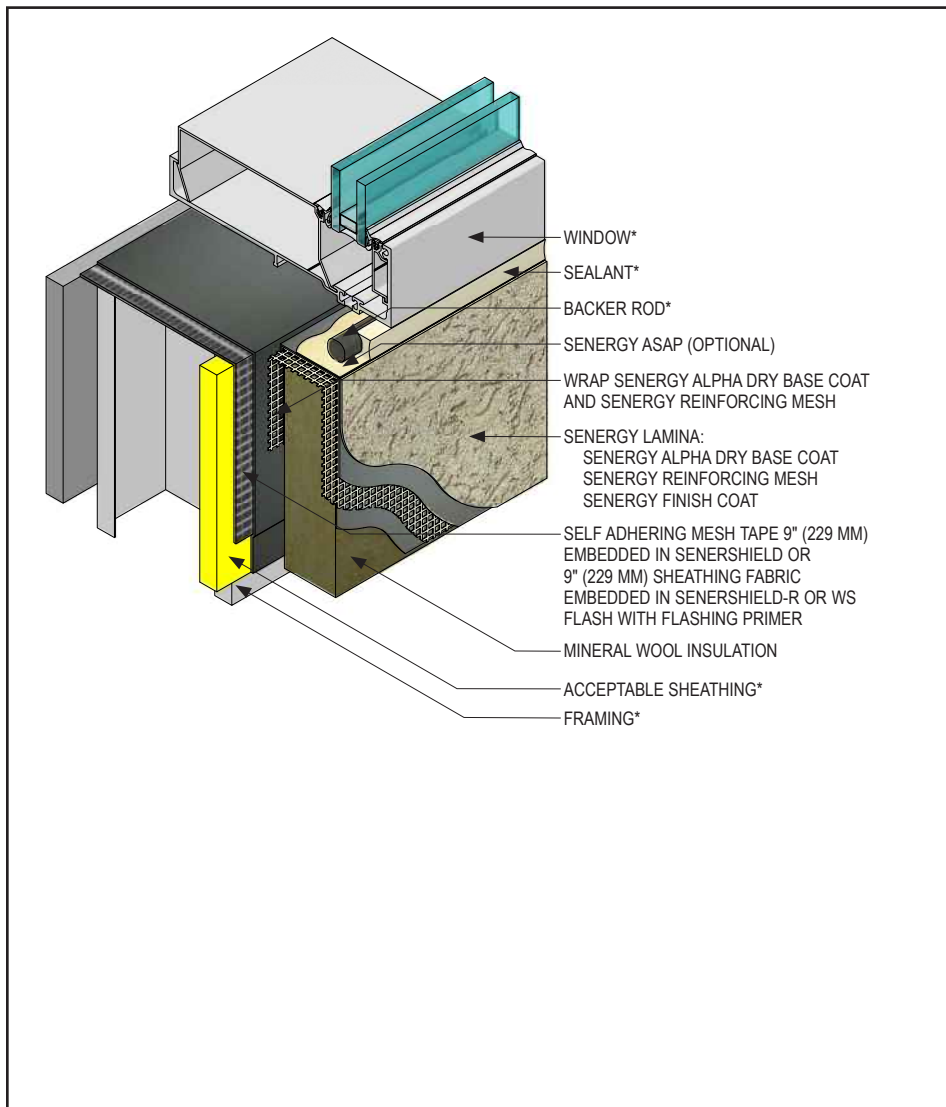
- Verify all materials are installed in accordance with current installation instructions.
- All terminations must be fully encapsulated with mesh reinforced base coat.
- Ensure water-resistive barrier is properly applied into the rough openings in accordance with application guidelines and code requirements prior to mineral wool insulation application.
- Do not apply finish to areas that will receive sealant.
- Provide a back wrapped type joint with backer rod and sealant at system terminations to dissimilar materials, ensuring that a water tight seal is achieved (width per design).
- Provide continuous air seal around interior perimeter of interior window. Contact window manufacturer for specific installation instructions.

VNC-19 2109

(*NOTE: BY OTHERS)

This detail represents Master Builders Solutions Construction Systems US, LLC (hereinafter Master Builders Solutions) latest recommendations. It is presented in good faith by Master Builders Solutions. The detail is subject to change without notice. Master Builders Solutions accepts no liability for the end use of the detail. For conditions not shown, consult Master Builders Solutions for review of specific detail.

Senerflex Vulcan NC System TYPICAL WINDOW SILL (FLUSH)



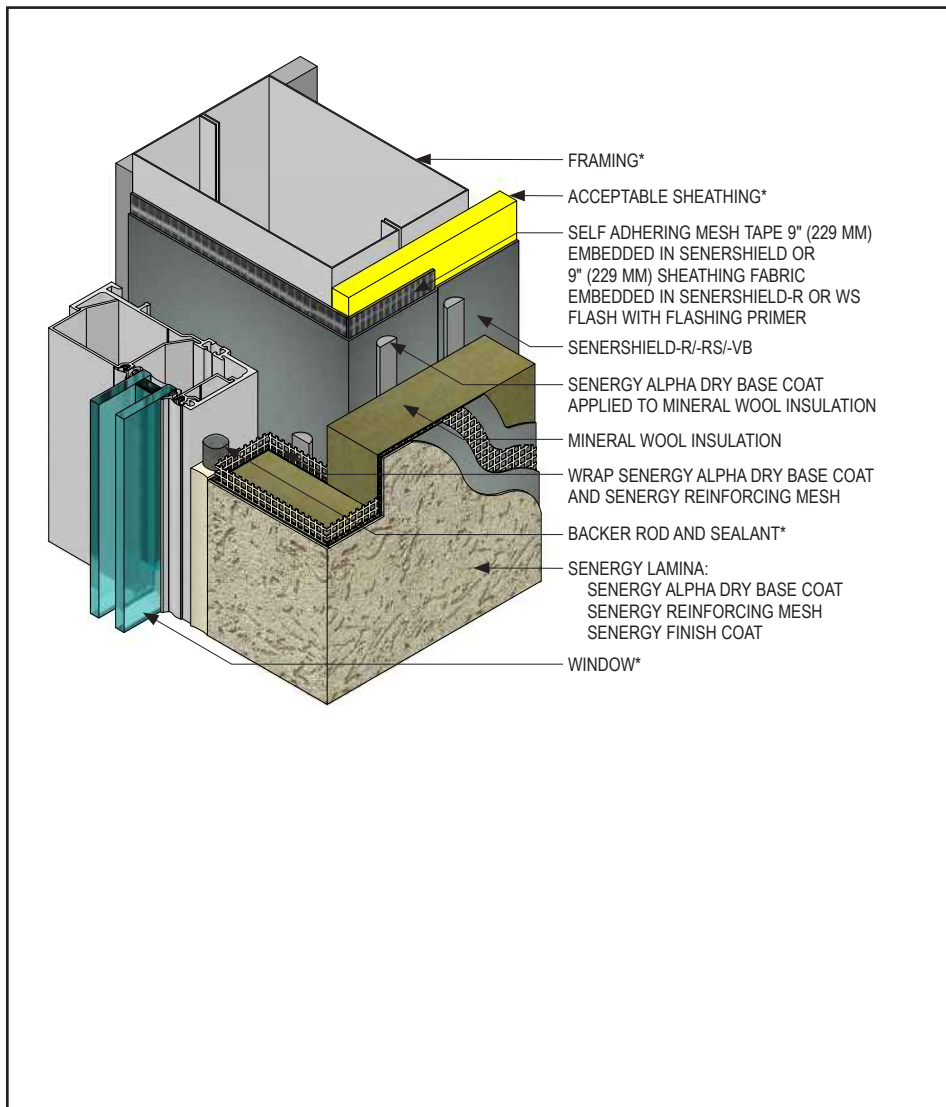
- Verify all materials are installed in accordance with current installation instructions.
- All terminations must be fully encapsulated with mesh reinforced base coat.
- Ensure water-resistive barrier is properly applied into the rough openings in accordance with application guidelines and code requirements prior to mineral wool insulation application.
- Do not apply finish to areas that will receive sealant.
- Provide a back wrapped type joint with backer rod and sealant at system terminations to dissimilar materials, ensuring that a water tight seal is achieved (width per design).
- Provide continuous air seal around interior perimeter of interior window. Contact window manufacturer for specific installation instructions.

VNC-20 2109

(*NOTE: BY OTHERS)

This detail represents Master Builders Solutions Construction Systems US, LLC (hereinafter Master Builders Solutions) latest recommendations. It is presented in good faith by Master Builders Solutions. The detail is subject to change without notice. Master Builders Solutions accepts no liability for the end use of the detail. For conditions not shown, consult Master Builders Solutions for review of specific detail.

Senerflex Vulcan NC System TYPICAL WINDOW JAMB (RECESSED)



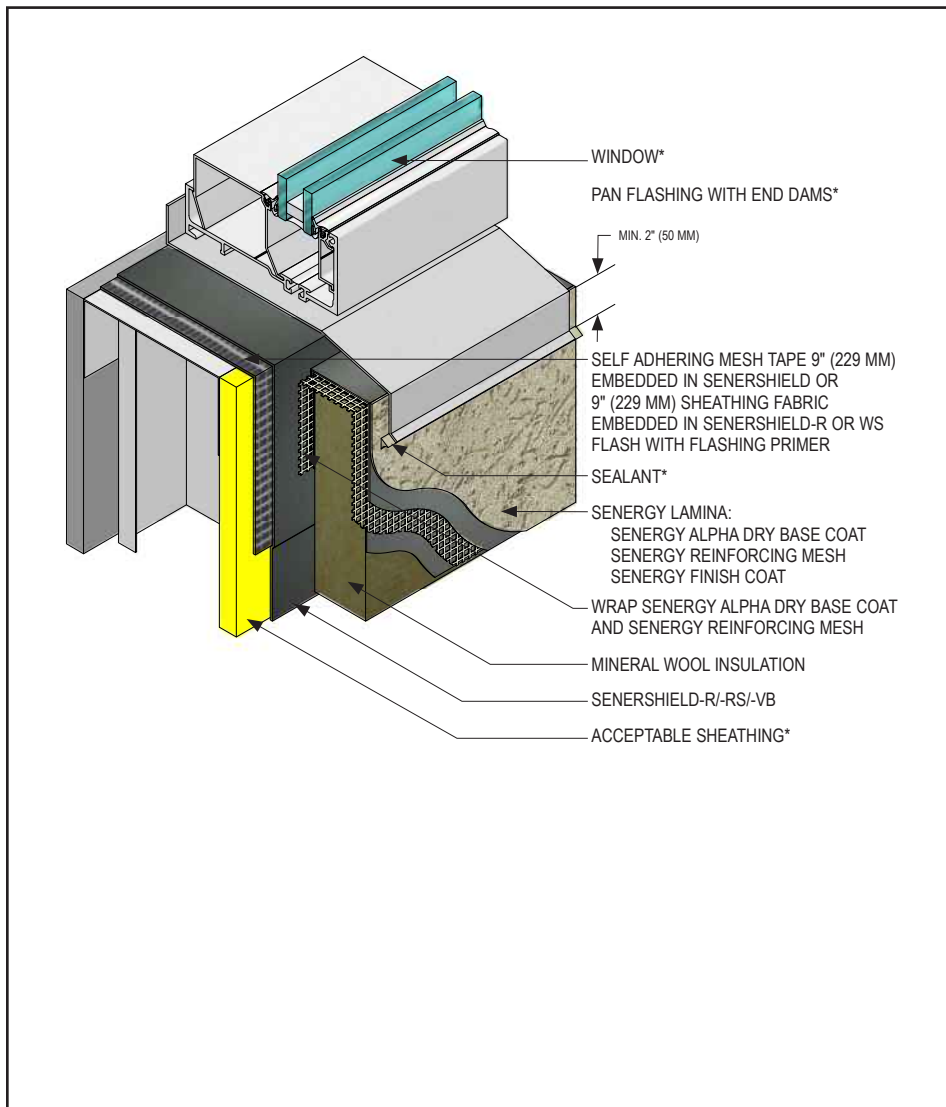
- Verify all materials are installed in accordance with current installation instructions.
- All terminations must be fully encapsulated with mesh reinforced base coat.
- Ensure water-resistive barrier is properly applied into the rough openings in accordance with application guidelines and code requirements prior to mineral wool insulation application.
- Do not apply finish to areas that will receive sealant.
- Provide a back wrapped type joint with backer rod and sealant at system terminations to dissimilar materials, ensuring that a water tight seal is achieved (width per design).
- Provide continuous air seal around interior perimeter of interior window. Contact window manufacturer for specific installation instructions.

VNC-21 2109

(*NOTE: BY OTHERS)

This detail represents Master Builders Solutions Construction Systems US, LLC (hereinafter Master Builders Solutions) latest recommendations. It is presented in good faith by Master Builders Solutions. The detail is subject to change without notice. Master Builders Solutions accepts no liability for the end use of the detail. For conditions not shown, consult Master Builders Solutions for review of specific detail.

Senerflex Vulcan NC System TYPICAL WINDOW SILL (RECESSED)



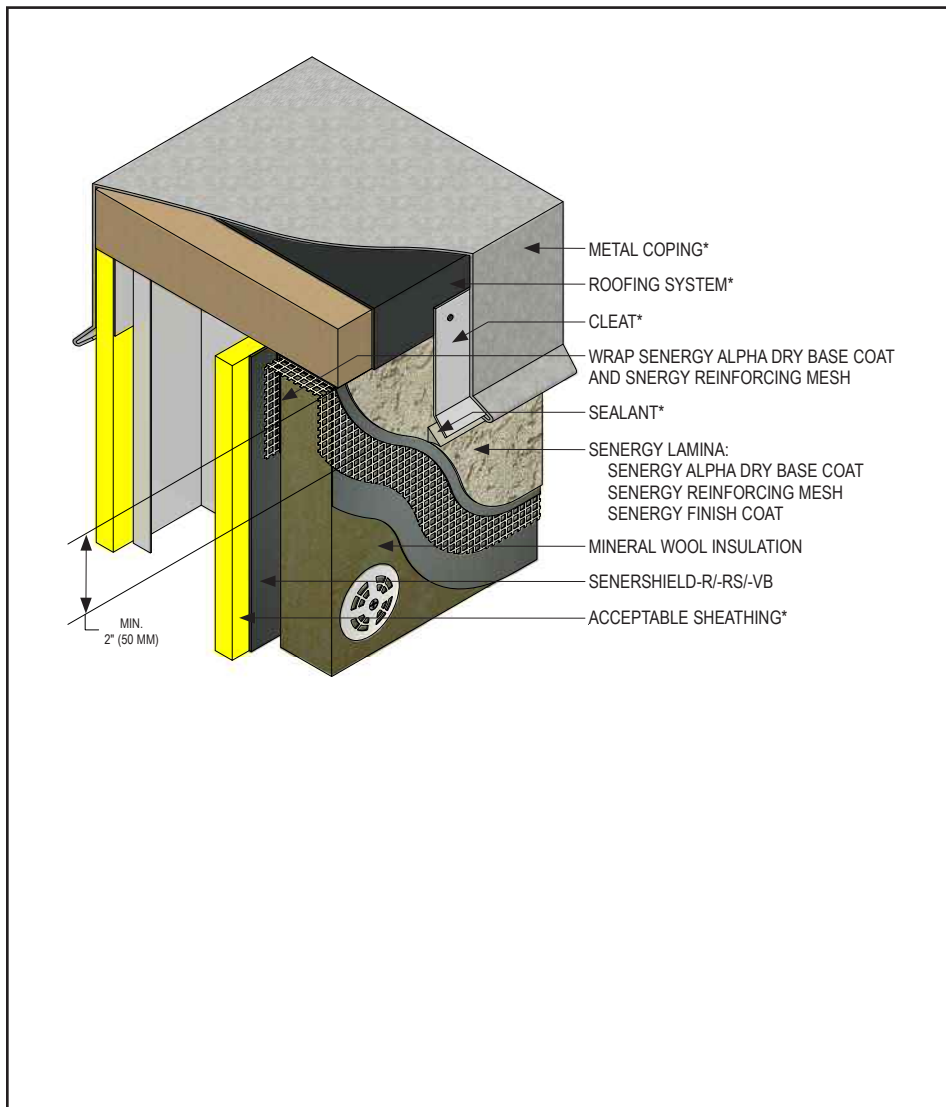
- Verify all materials are installed in accordance with current installation instructions.
- All terminations must be fully encapsulated with mesh reinforced base coat.
- Ensure water-resistive barrier is properly applied into the rough openings in accordance with application guidelines and code requirements prior to mineral wool insulation application.
- Ensure that metal pan flashing extends onto the system a minimum of 2" (50 mm) down the face and that end dams are provided.
- Provide continuous air seal around interior perimeter of interior window. Contact window manufacturer for specific installation instructions.

VNC-22 2109

(*NOTE: BY OTHERS)

This detail represents Master Builders Solutions Construction Systems US, LLC (hereinafter Master Builders Solutions) latest recommendations. It is presented in good faith by Master Builders Solutions. The detail is subject to change without notice. Master Builders Solutions accepts no liability for the end use of the detail. For conditions not shown, consult Master Builders Solutions for review of specific detail.

Senerflex Vulcan NC System TYPICAL PARAPET CAP FLASHING



- Verify all materials are installed in accordance with current installation instructions.
- All terminations must be fully encapsulated with mesh reinforced base coat.
- Ensure that metal coping/flushing extends onto the system a minimum of 2" (50 mm) down the face.

VNC-23 2109

(*NOTE: BY OTHERS)

This detail represents Master Builders Solutions Construction Systems US, LLC (hereinafter Master Builders Solutions) latest recommendations. It is presented in good faith by Master Builders Solutions. The detail is subject to change without notice. Master Builders Solutions accepts no liability for the end use of the detail. For conditions not shown, consult Master Builders Solutions for review of specific detail.

Senerflex Vulcan NC System TYPICAL KICK-OUT FLASHING



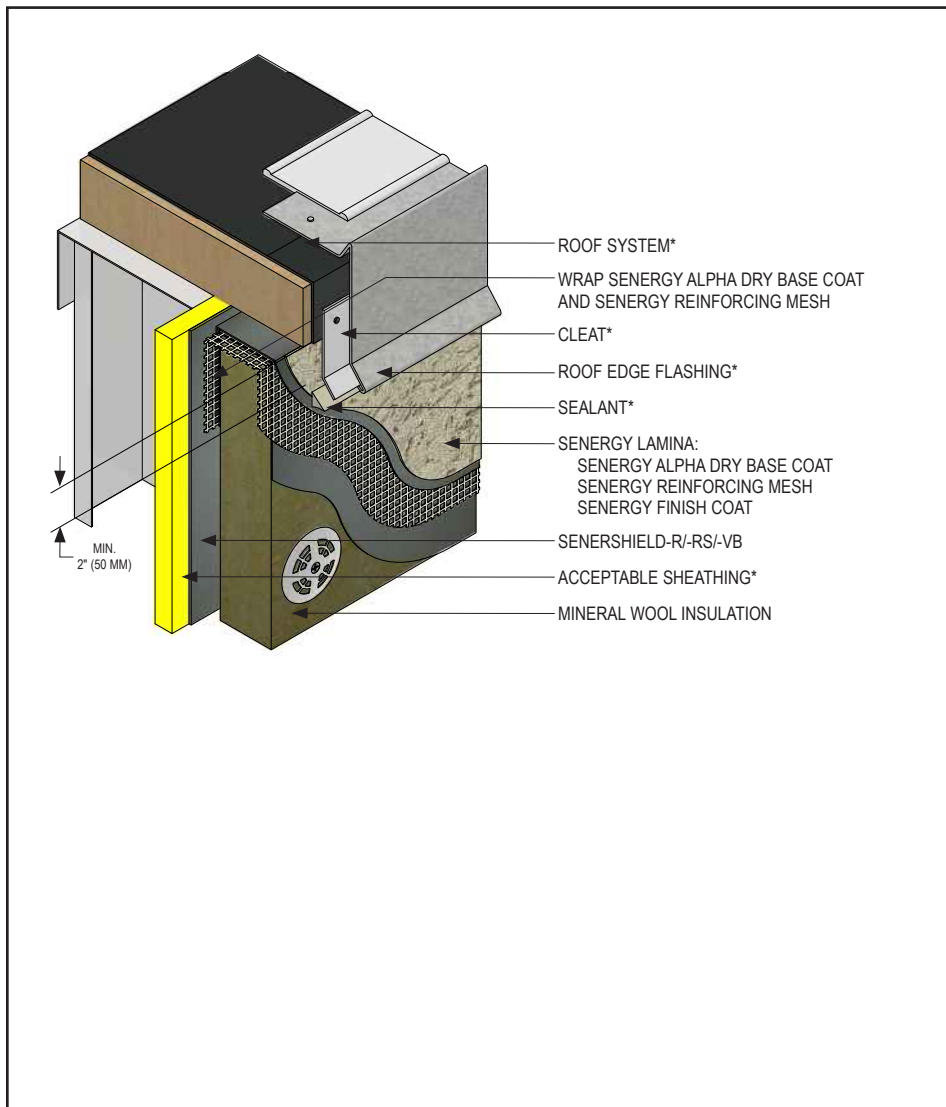
- Verify all materials are installed in accordance with current installation instructions.
- All terminations must be fully encapsulated with mesh reinforced base coat.
- Ensure a means for drainage is provided at system termination at roof.
- Terminate system a minimum of 2" (50 mm) above roof.
- Ensure step flashing is a minimum of 2" (50 mm) behind system.
- Kick-out flashing shall be a minimum of 4" (102 mm) in height.
- Do not apply finish to areas that will receive sealant.

VNC-24 2109

(*NOTE: BY OTHERS)

This detail represents Master Builders Solutions Construction Systems US, LLC (hereinafter Master Builders Solutions) latest recommendations. It is presented in good faith by Master Builders Solutions. The detail is subject to change without notice. Master Builders Solutions accepts no liability for the end use of the detail. For conditions not shown, consult Master Builders Solutions for review of specific detail.

Senerflex Vulcan NC System TYPICAL ROOF EDGE FLASHING



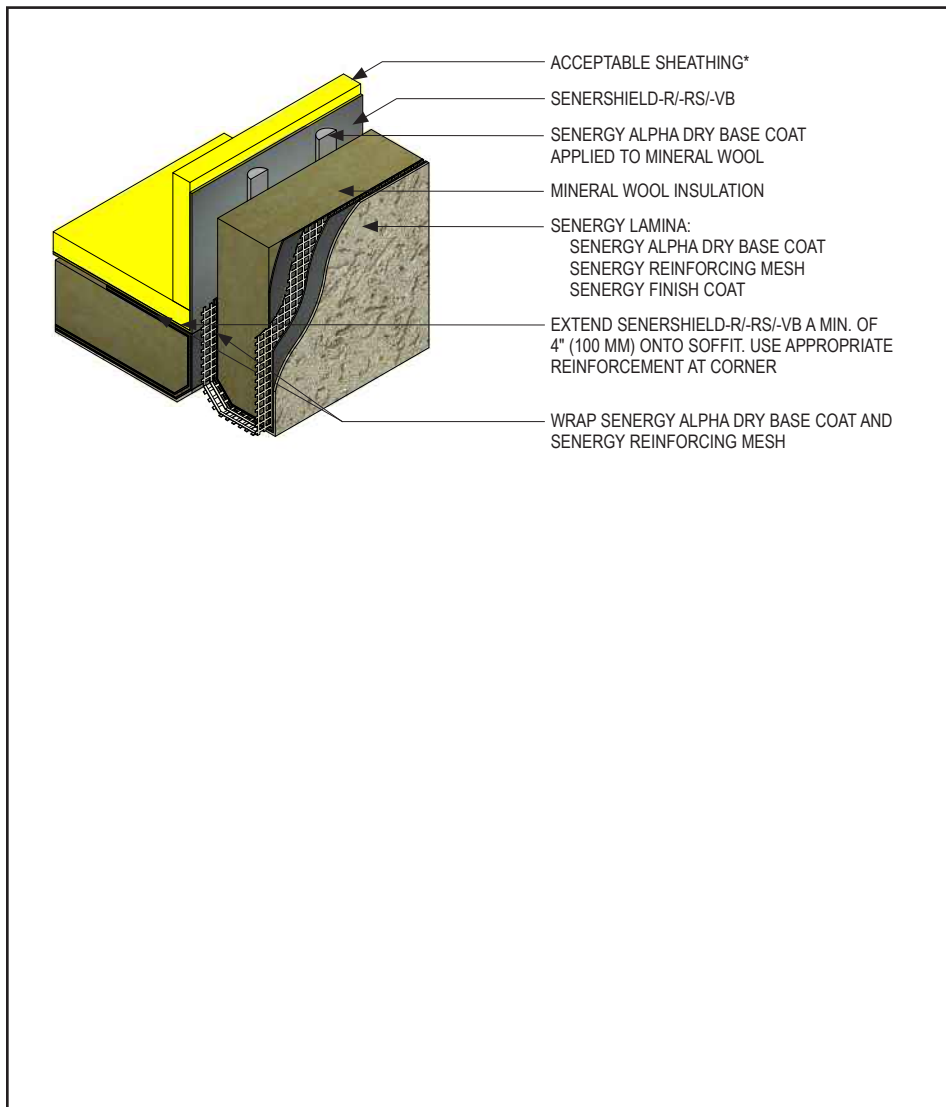
- Verify all materials are installed in accordance with current installation instructions.
- All terminations must be fully encapsulated with mesh reinforced base coat.
- Ensure that metal coping/ flashing extends onto the system a minimum of 2" (50 mm) down the face.

VNC-25 2109

(*NOTE: BY OTHERS)

This detail represents Master Builders Solutions Construction Systems US, LLC (hereinafter Master Builders Solutions) latest recommendations. It is presented in good faith by Master Builders Solutions. The detail is subject to change without notice. Master Builders Solutions accepts no liability for the end use of the detail. For conditions not shown, consult Master Builders Solutions for review of specific detail.

Senerflex Vulcan NC System SECTION AT FASCIA / SOFFIT



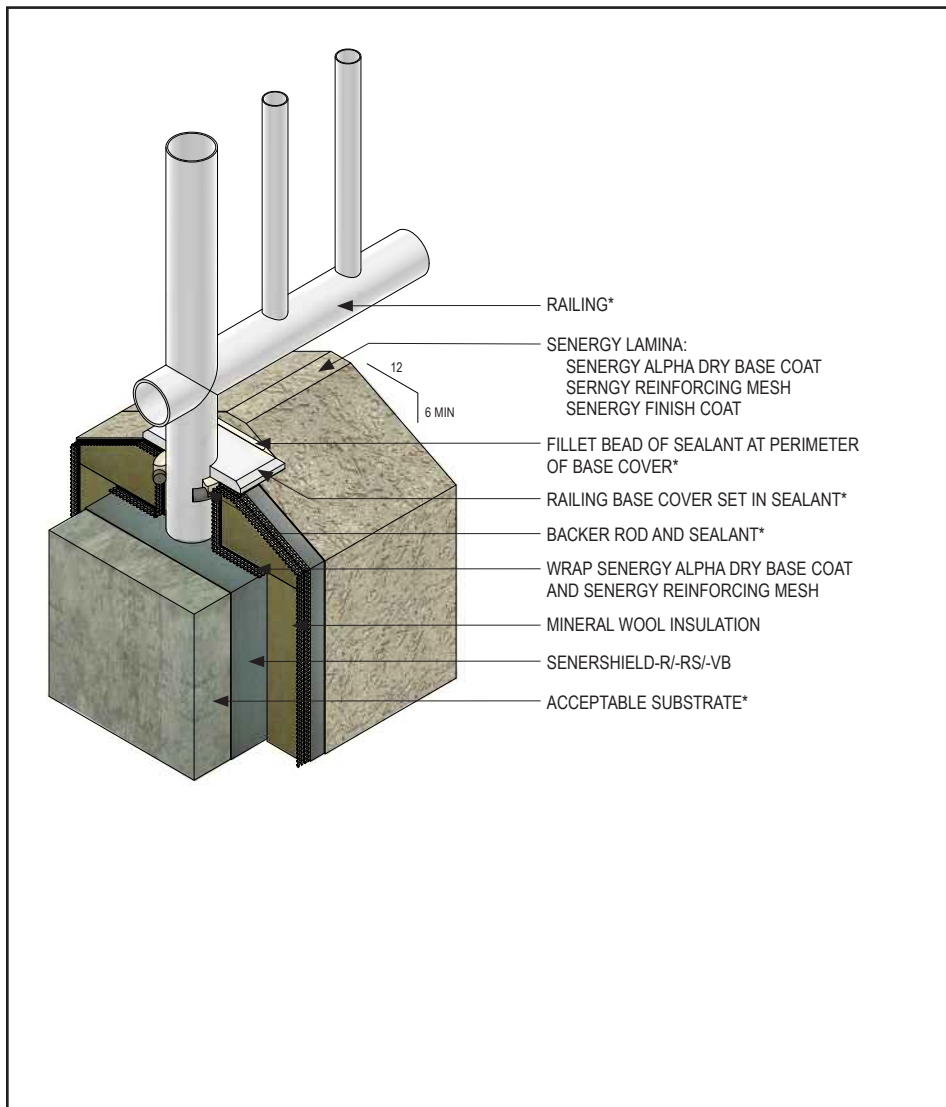
- Verify all materials are installed in accordance with current installation instructions.
- All terminations must be fully encapsulated with mesh reinforced base coat.
- Ensure a means for drainage is provided at system termination at soffit/fascia transition.

VNC-26 2109

(*NOTE: BY OTHERS)

This detail represents Master Builders Solutions Construction Systems US, LLC (hereinafter Master Builders Solutions) latest recommendations. It is presented in good faith by Master Builders Solutions. The detail is subject to change without notice. Master Builders Solutions accepts no liability for the end use of the detail. For conditions not shown, consult Master Builders Solutions for review of specific detail.

Senerflex Vulcan NC System TYPICAL CORE MOUNTED RAILING ATTACHMENT



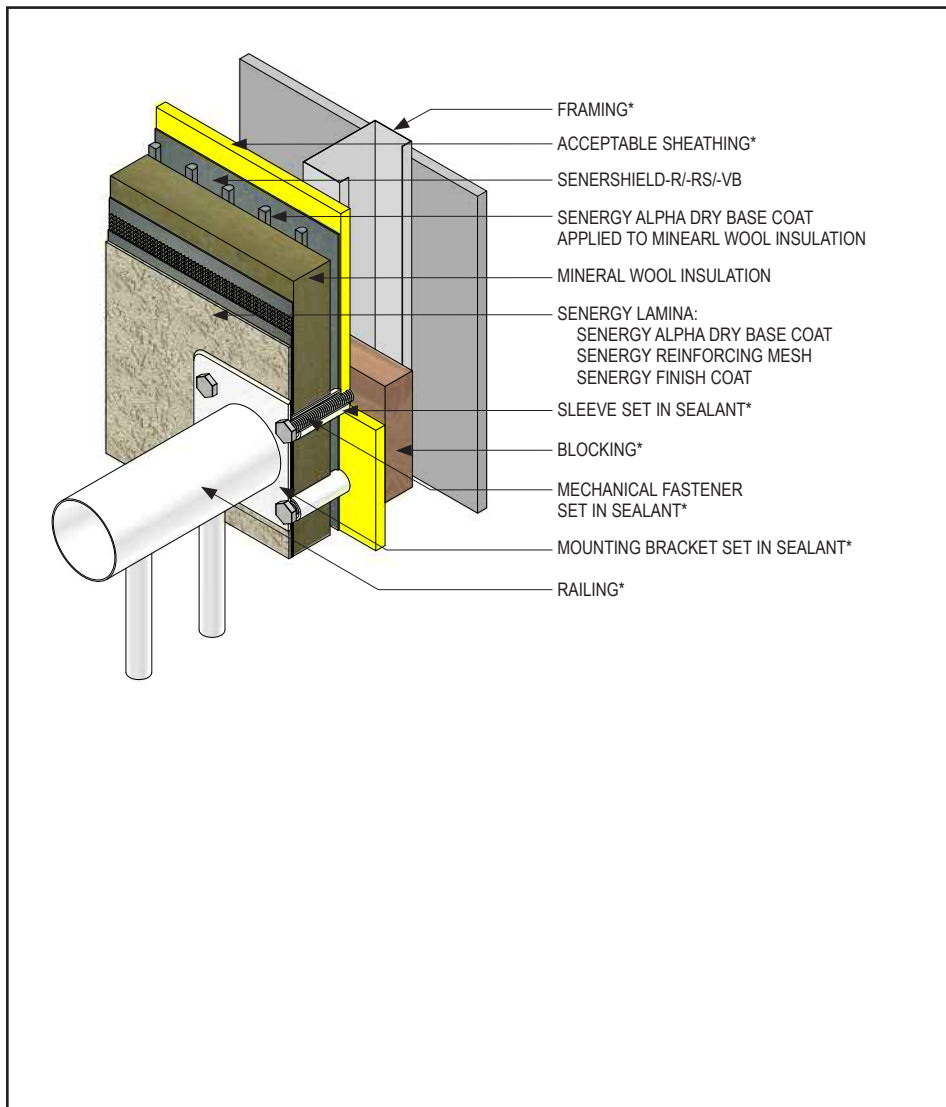
- Verify all materials are installed in accordance with current installation instructions.
- All terminations must be fully encapsulated with mesh reinforced base coat.
- Ensure all penetrations into the system are properly sealed.

VNC-27 2109

(*NOTE: BY OTHERS)

This detail represents Master Builders Solutions Construction Systems US, LLC (hereinafter Master Builders Solutions) latest recommendations. It is presented in good faith by Master Builders Solutions. The detail is subject to change without notice. Master Builders Solutions accepts no liability for the end use of the detail. For conditions not shown, consult Master Builders Solutions for review of specific detail.

Senerflex Vulcan NC System TYPICAL RAILING ATTACHMENT



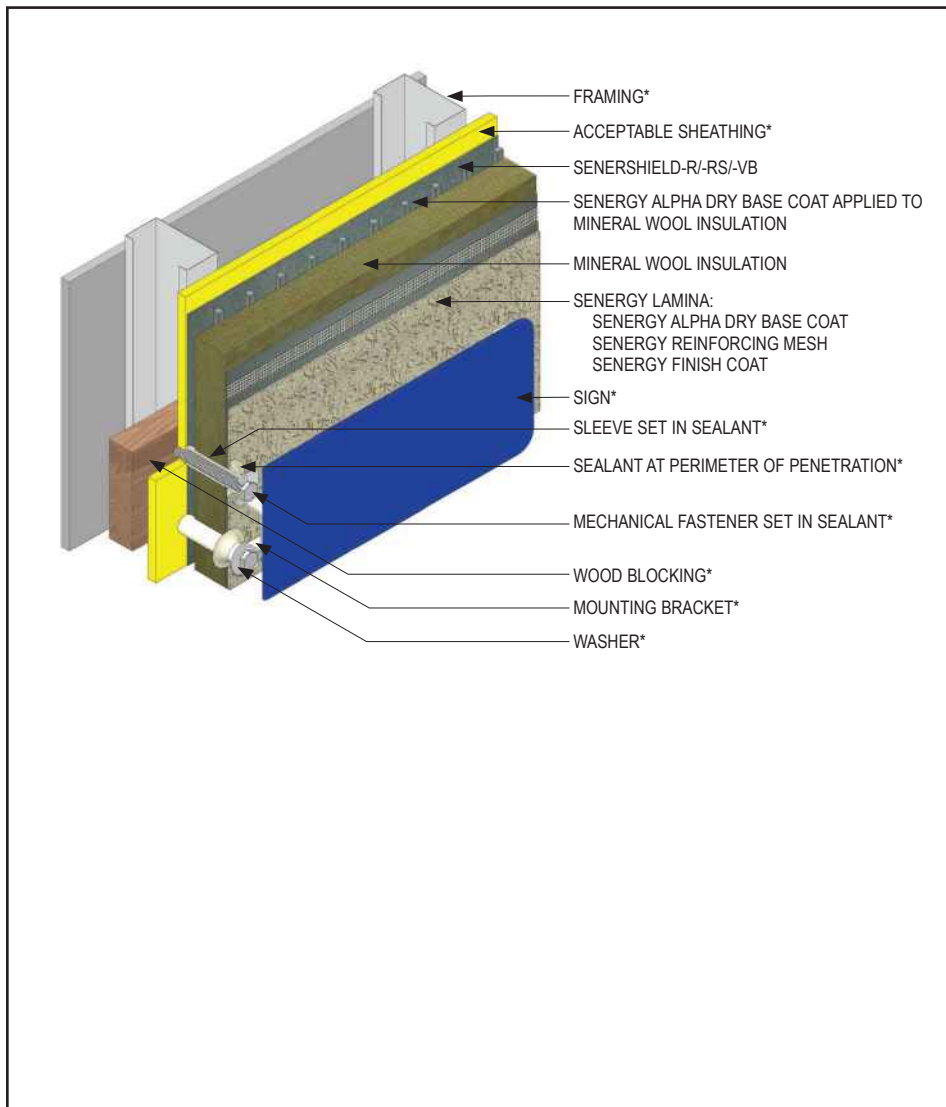
- Verify all materials are installed in accordance with current installation instructions.
- All terminations must be fully encapsulated with mesh reinforced base coat.
- Ensure all penetrations into the system are properly sealed.

VNC-28 2109

(*NOTE: BY OTHERS)

This detail represents Master Builders Solutions Construction Systems US, LLC (hereinafter Master Builders Solutions) latest recommendations. It is presented in good faith by Master Builders Solutions. The detail is subject to change without notice. Master Builders Solutions accepts no liability for the end use of the detail. For conditions not shown, consult Master Builders Solutions for review of specific detail.

Senerflex Vulcan NC System TYPICAL SIGN ATTACHMENT



- Verify all materials are installed in accordance with current installation instructions.
- All terminations must be fully encapsulated with mesh reinforced base coat.
- Ensure all penetrations into the system are properly sealed.
- Blocking or other structural support required for sign attachment.

VNC-29 2109

(*NOTE: BY OTHERS)

This detail represents Master Builders Solutions Construction Systems US, LLC (hereinafter Master Builders Solutions) latest recommendations. It is presented in good faith by Master Builders Solutions. The detail is subject to change without notice. Master Builders Solutions accepts no liability for the end use of the detail. For conditions not shown, consult Master Builders Solutions for review of specific detail.

Warranty

Master Builders Solutions Construction Systems US, LLC ("Master Builders") warrants this product to be free from manufacturing defects and to meet the technical properties on the current Technical Data Guide, if used as directed within shelf life. Satisfactory results depend not only on quality products but also upon many factors beyond our control. Master Builders MAKES NO OTHER WARRANTY OR GUARANTEE, EXPRESS OR IMPLIED, INCLUDING WARRANTIES OF MERCHANTABILITY OR FITNESS FOR A PARTICULAR PURPOSE WITH RESPECT TO ITS PRODUCTS. The sole and exclusive remedy of Purchaser for any claim concerning this product, including but not limited to, claims alleging breach of warranty, negligence, strict liability or otherwise, is shipment to purchaser of product equal to the amount of product that fails to meet this warranty or refund of the original purchase price of product that fails to meet this warranty, at the sole option of Master Builders. Any claims concerning this product must be received in writing within one (1) year from the date of shipment and any claims not presented within that period are waived by Purchaser. Master Builders WILL NOT BE RESPONSIBLE FOR ANY SPECIAL, INCIDENTAL, CONSEQUENTIAL (INCLUDING LOST PROFITS) OR PUNITIVE DAMAGES OF ANY KIND.

Purchaser must determine the suitability of the products for the intended use and assumes all risks and liabilities in connection therewith. This information and all further technical advice are based on Master Builders' present knowledge and experience. However, Master Builders assumes no liability for providing such information and advice including the extent to which such information and advice may relate to existing third party intellectual property rights, especially patent rights, nor shall any legal relationship be created by or arise from the provision of such information and advice. Master Builders reserves the right to make any changes according to technological progress or further developments. The Purchaser of the Product(s) must test the product(s) for suitability for the intended application and purpose before proceeding with a full application of the product(s). Performance of the product described herein should be verified by testing and carried out by qualified experts.

For professional use only. Not for sale to or use by the general public.

For the most current version of this literature, please visit our website at senergy.master-builders-solutions.com/en.

Master Builders Solutions Construction Systems US, LLC

889 Valley Park Drive, Shakopee, MN 55379
senergy.master-builders-solutions.com/en

Customer Service +1 (800) 433-9517
Technical Service +1 (800) 589-1336