

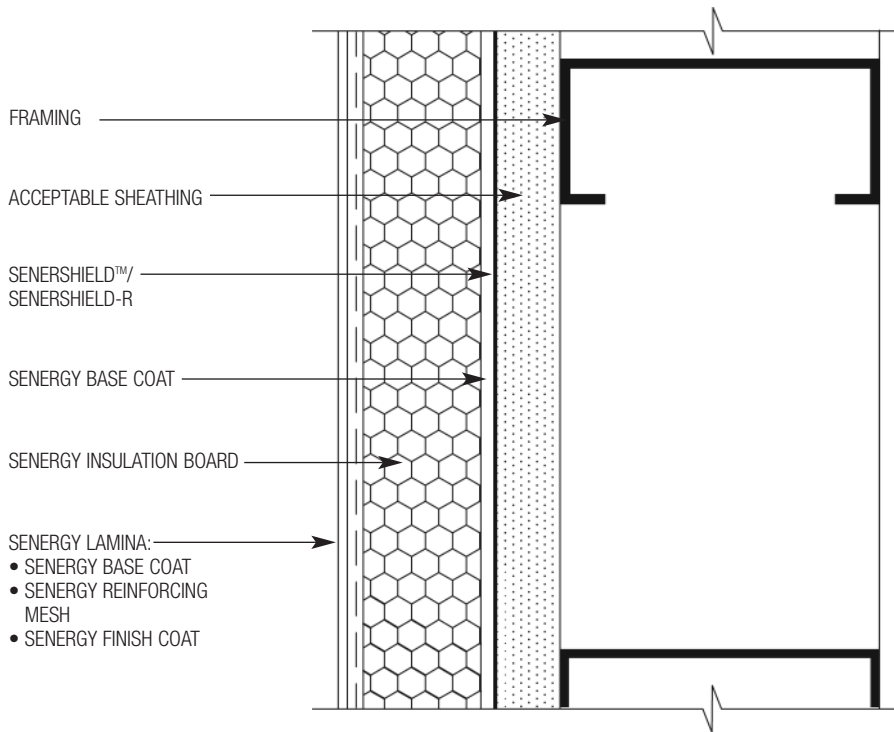


Senerflex® Secondary Weather Barrier Design

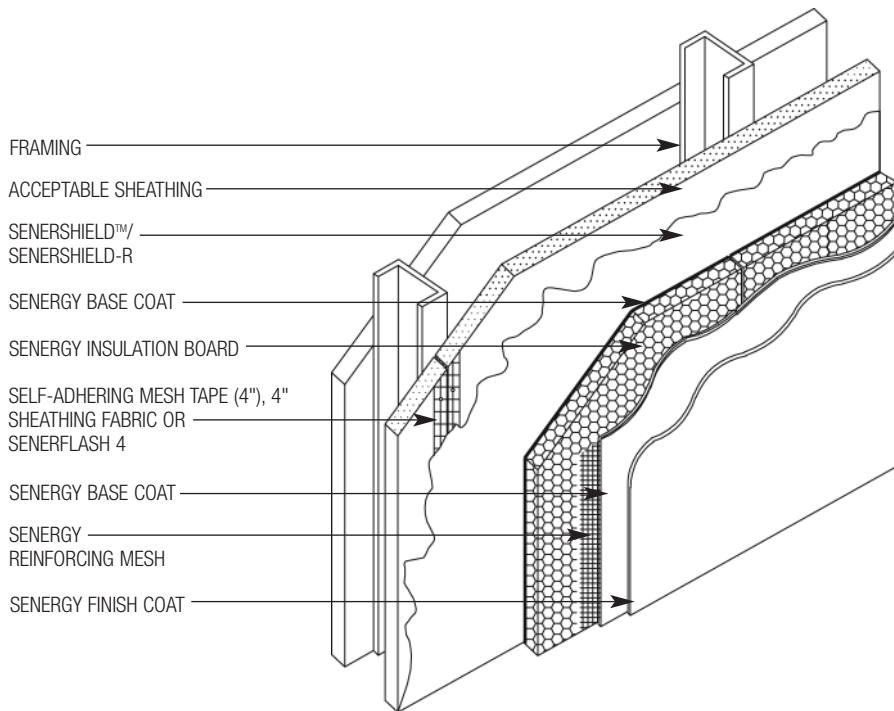


TYPICAL DETAILS 1017740

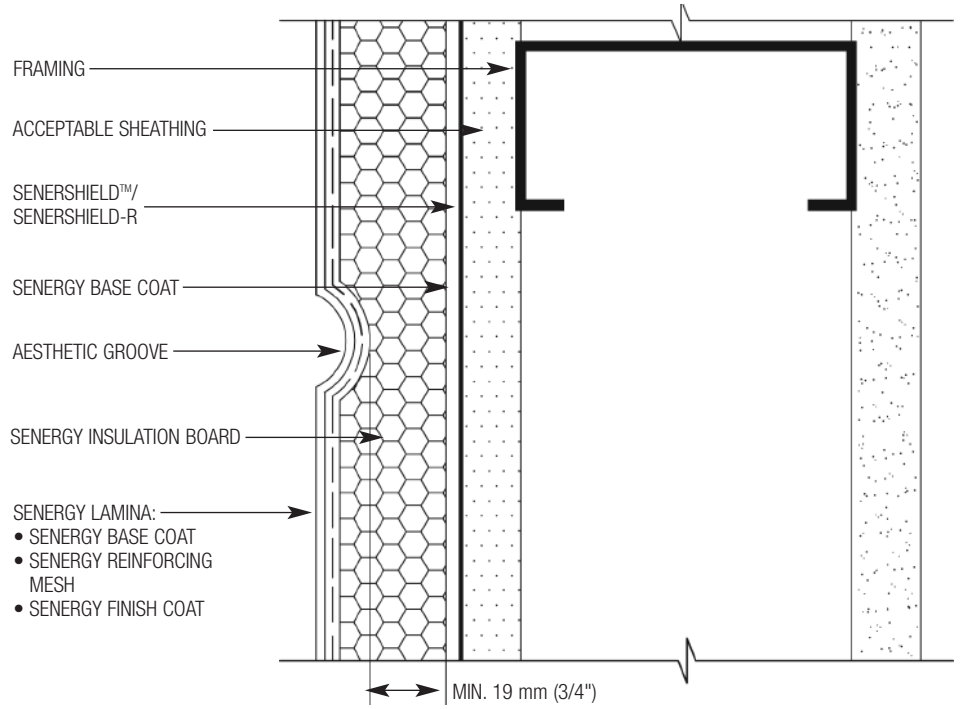
1. Senerflex Secondary Weather Barrier Design Application (Plan View)
2. Senerflex Secondary Weather Barrier Design Application (Isometric View)
3. Aesthetic Groove (Plan View)
4. Insulation Boards / Reinforcing Mesh Application at Openings
5. Window Head (Flush)
6. Window Head (Recessed)
7. Window Jamb Detail (Flush, Plan View)
8. Window Jamb Detail (Recessed, Plan View)
9. Window Sill Detail (Flush)
10. Window Sill Detail (Recessed)
11. Roof Edge Flashing Detail
12. Metal Coping Detail
13. Parapet Cap Detail
14. Expansion Joint Detail at Floorline
15. Expansion Joint at Change in Substrate
16. Termination at Soffit/Gable End
17. Expansion Joint Detail (Plan View)
18. Pipe Penetration
19. Corner Mesh Application with STRONG 15 or HI-IMPACT 20 (Plan View)
20. Corner Mesh Application with FLEXGUARD 4, INTERMEDIATE 6 or 12 (Plan View)
21. Light Fixture
22. Termination at Foundation
23. Termination at Foundation (Flush)
24. Kick-out Flashing Detail



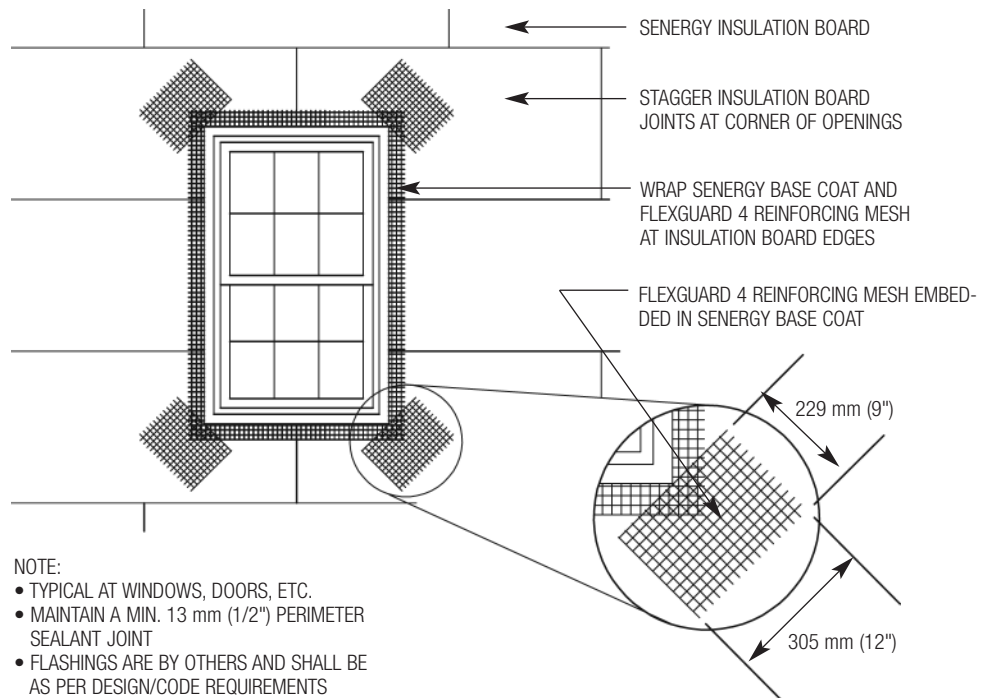
SWB-01 TYPICAL SENERFLEX SECONDARY WEATHER BARRIER DESIGN APPLICATION (PLAN VIEW)



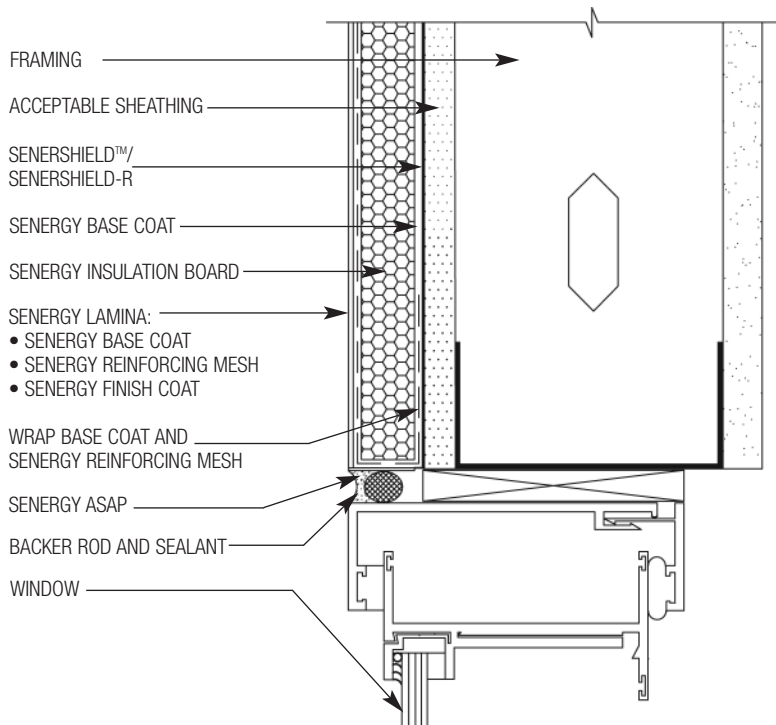
SWB-02 TYPICAL SENERFLEX SECONDARY WEATHER BARRIER DESIGN APPLICATION (ISOMETRIC VIEW)



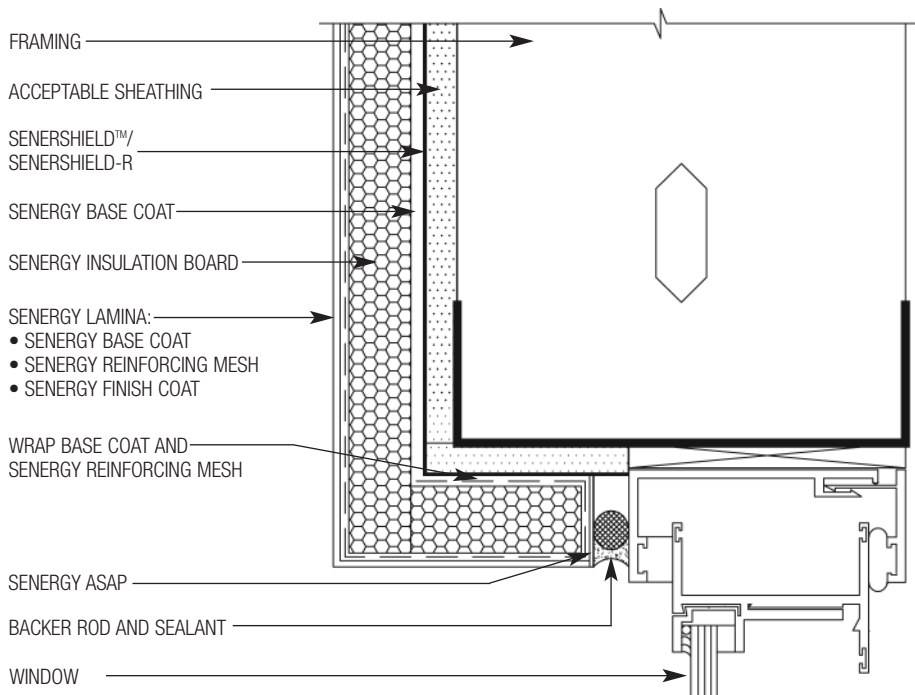
SWB-03 TYPICAL AESTHETIC GROOVE (PLAN VIEW)



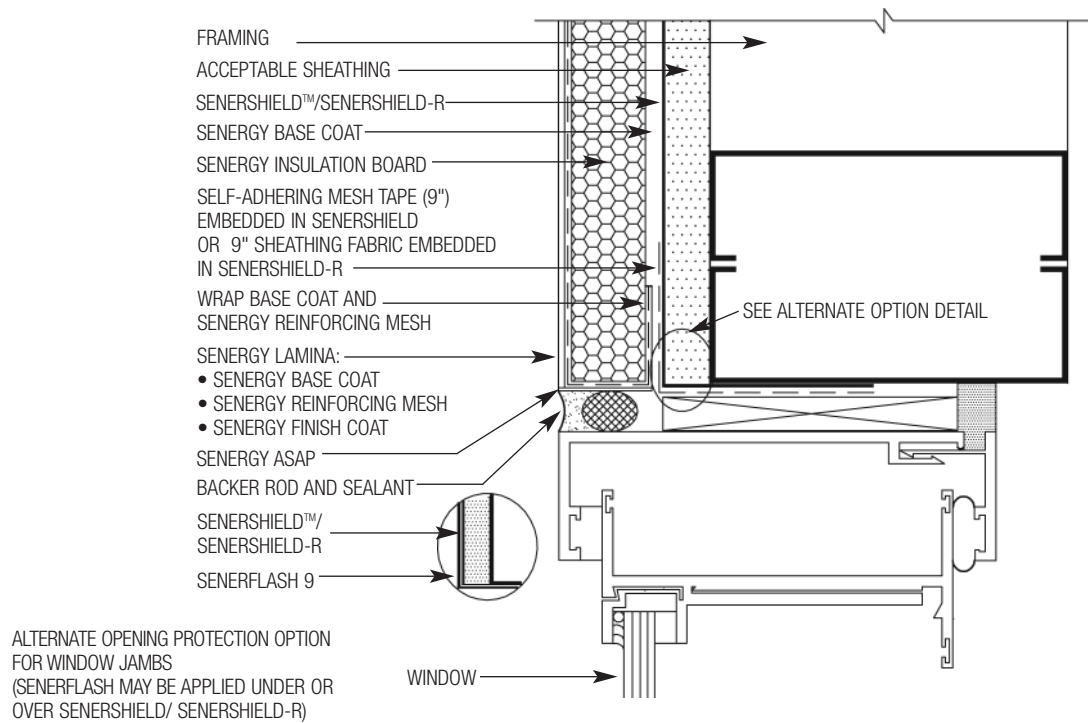
SWB-04 TYPICAL INSULATION BOARDS/REINFORCING MESH APPLICATION AT OPENINGS



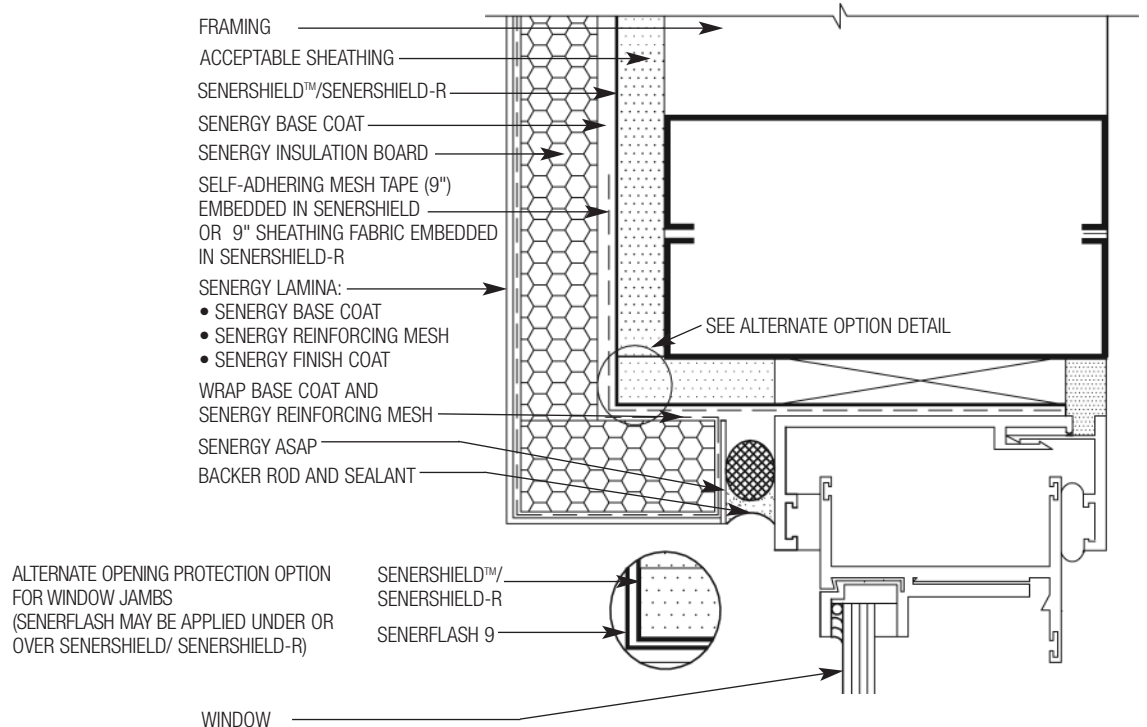
SWB-05 TYPICAL WINDOW HEAD (FLUSH)



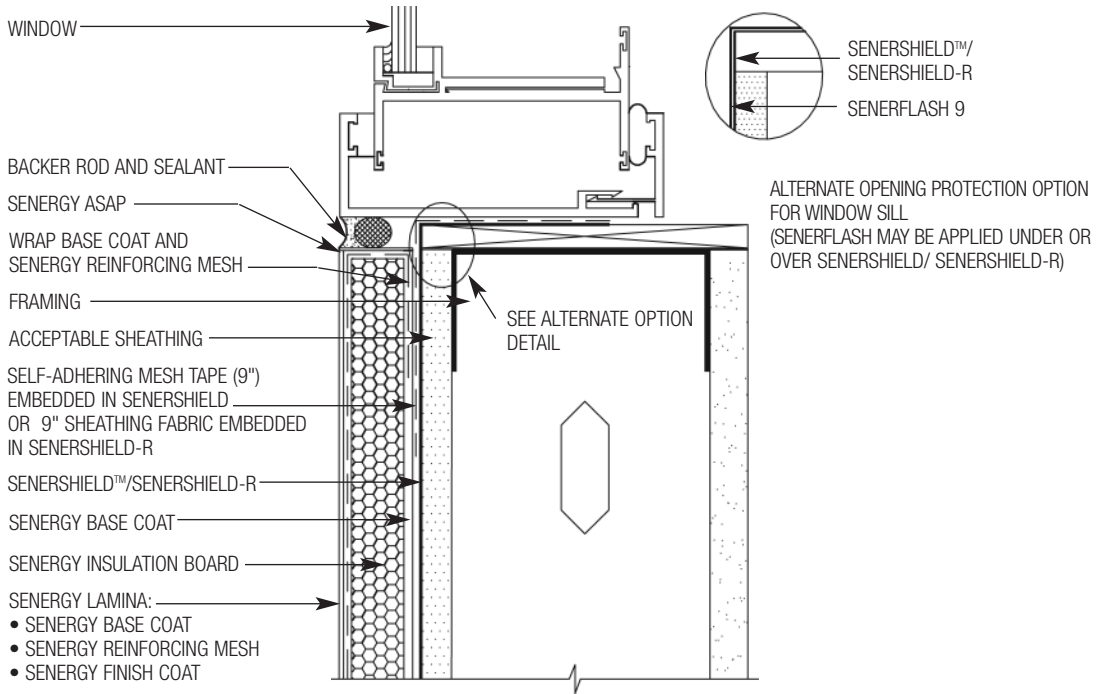
SWB-06 TYPICAL WINDOW HEAD (RECESSED)



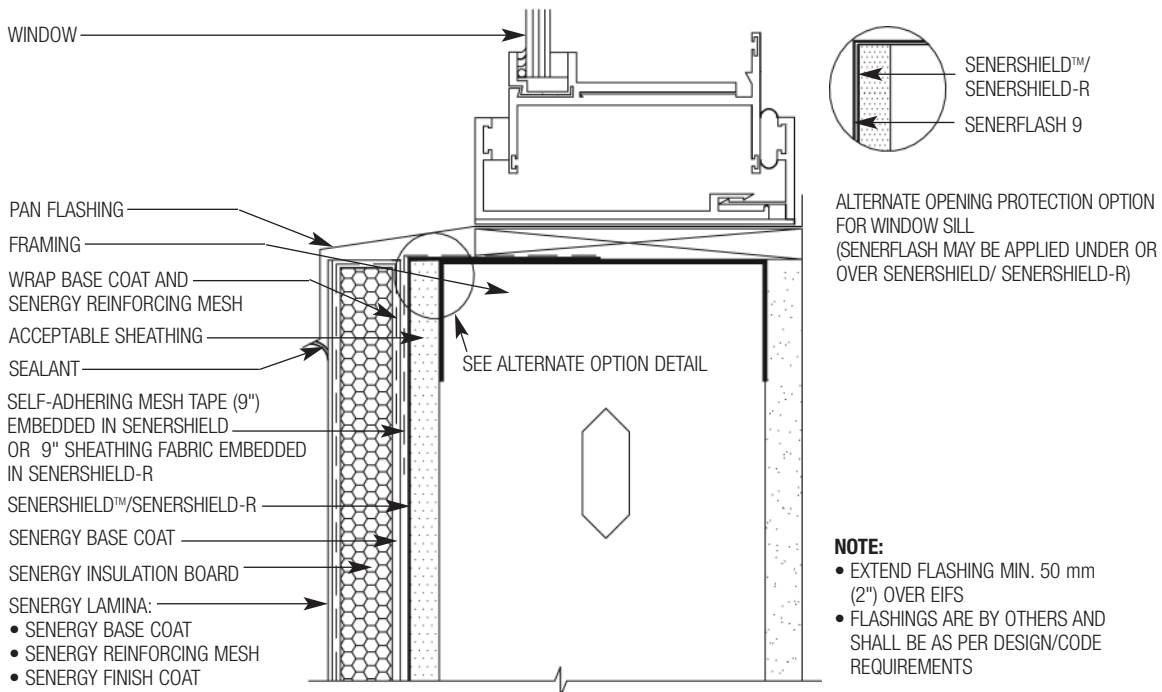
SWB-07 TYPICAL WINDOW JAMB DETAIL (FLUSH, PLAN VIEW)



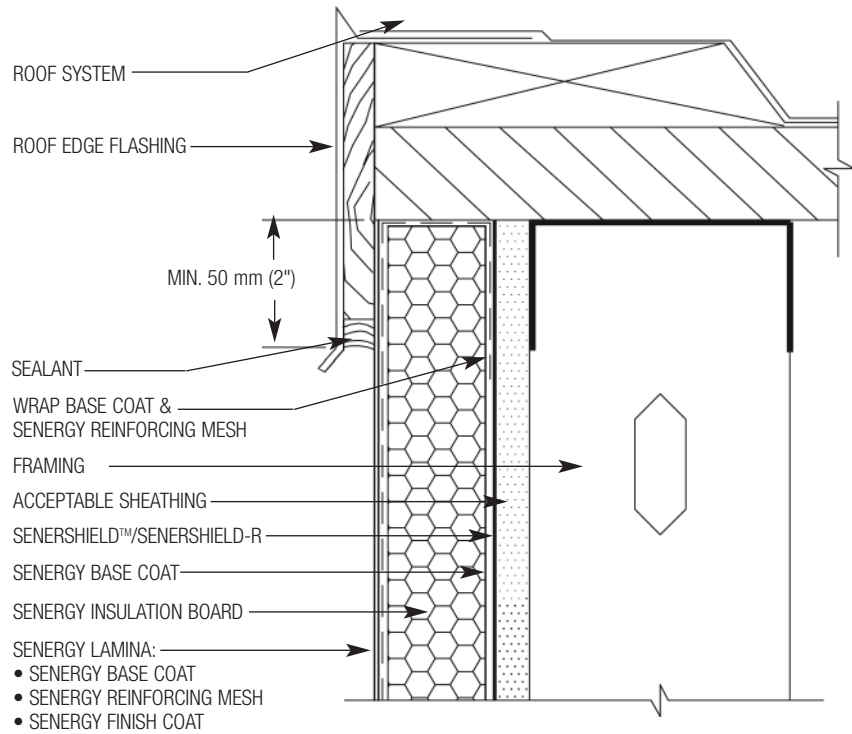
SWB-08 TYPICAL WINDOW JAMB DETAIL (RECESSED, PLAN VIEW)



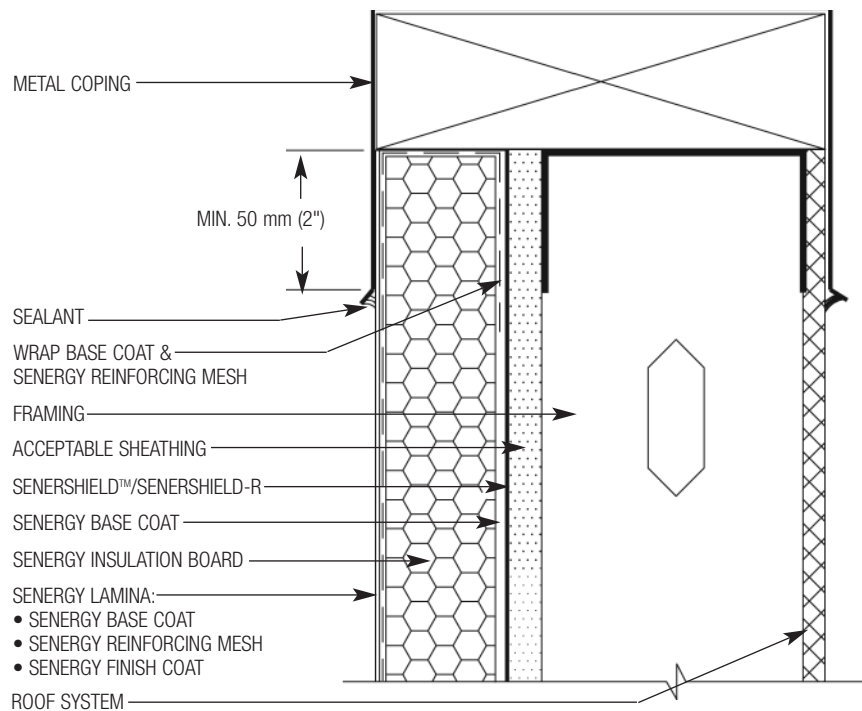
SWB-09 TYPICAL WINDOW SILL DETAIL (FLUSH)



SWB-10 TYPICAL WINDOW SILL DETAIL (RECESSED)



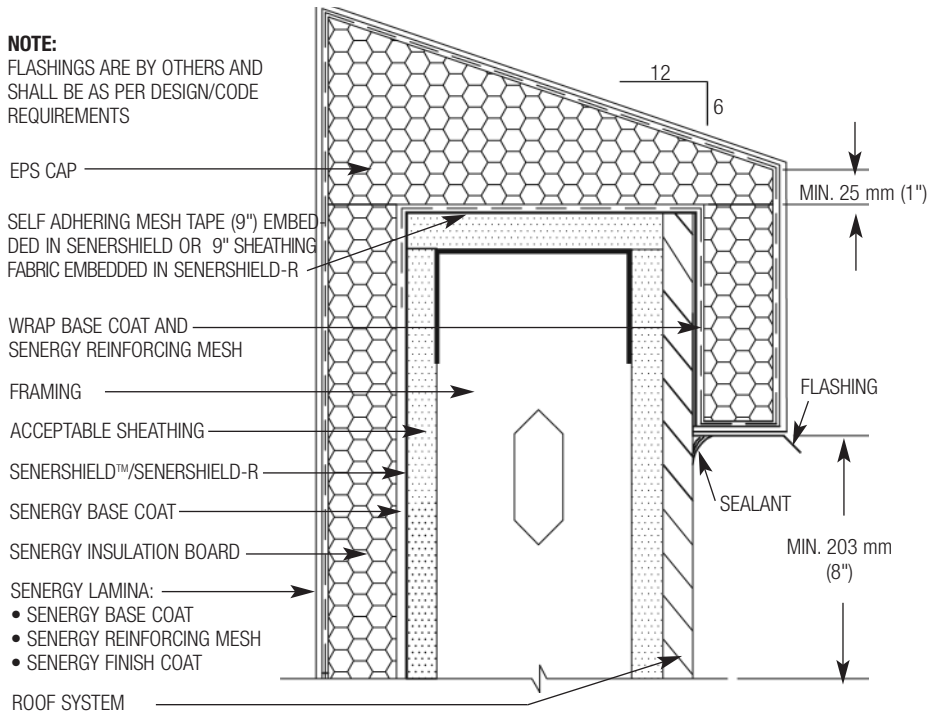
SWB-11 TYPICAL ROOF EDGE FLASHING DETAIL



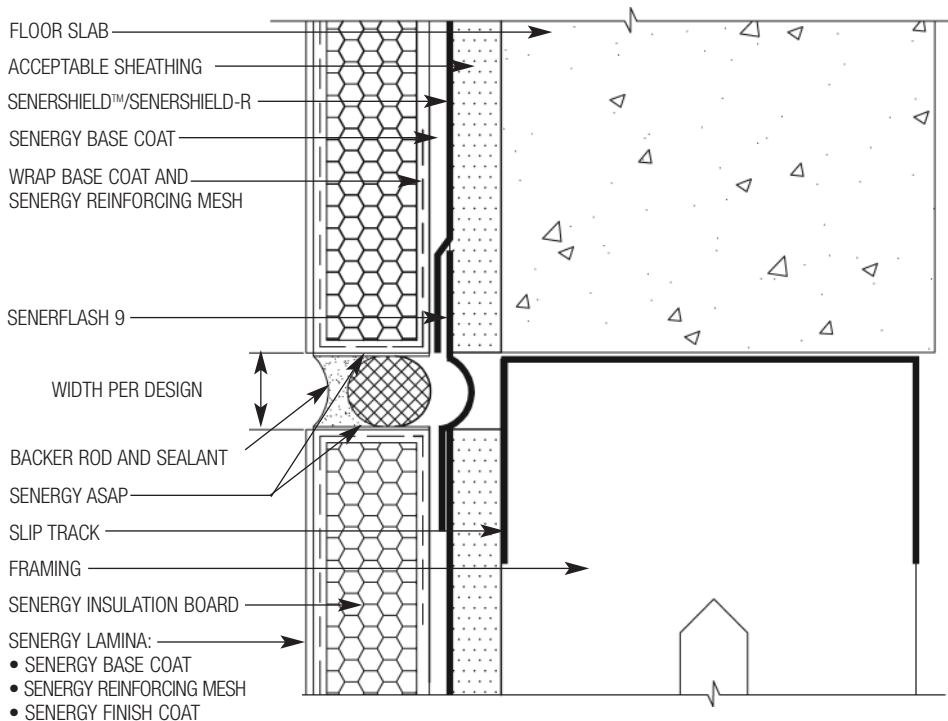
SWB-12 TYPICAL METAL COPING DETAIL

NOTE:

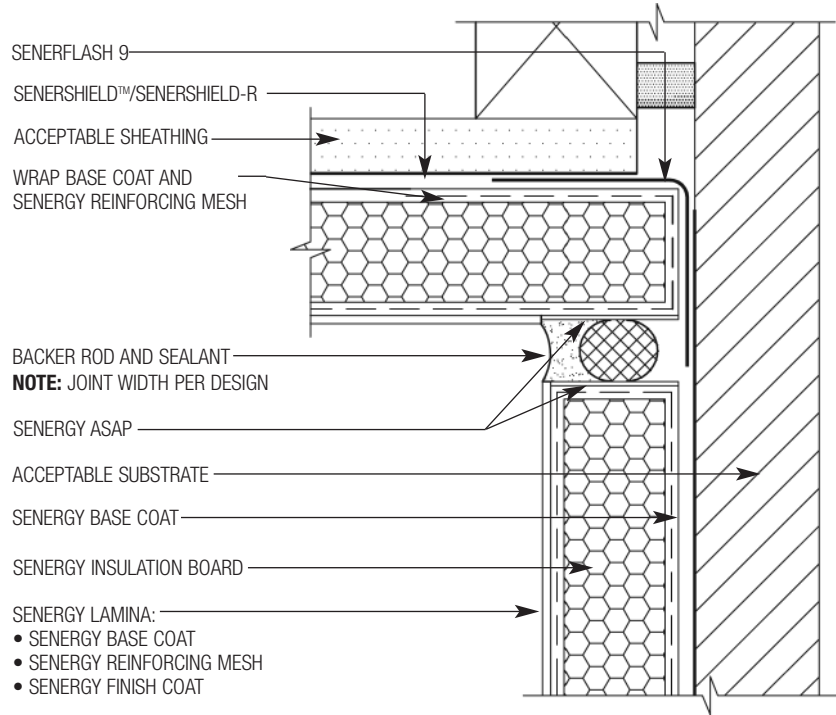
FLASHINGS ARE BY OTHERS AND SHALL BE AS PER DESIGN/CODE REQUIREMENTS



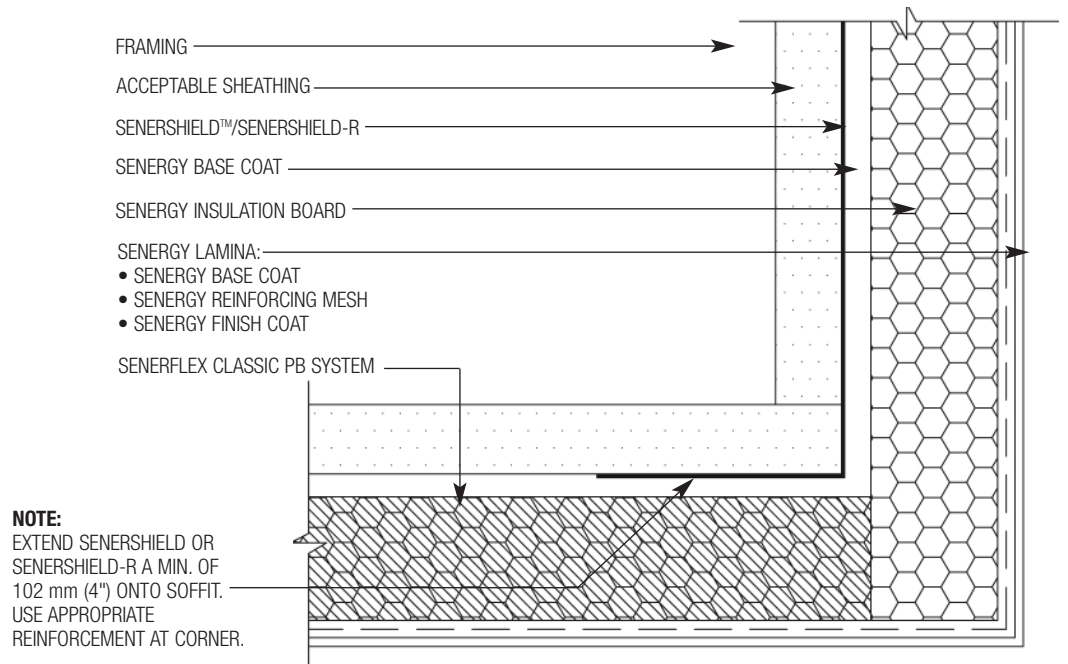
SWB-13 TYPICAL PARAPET CAP DETAIL



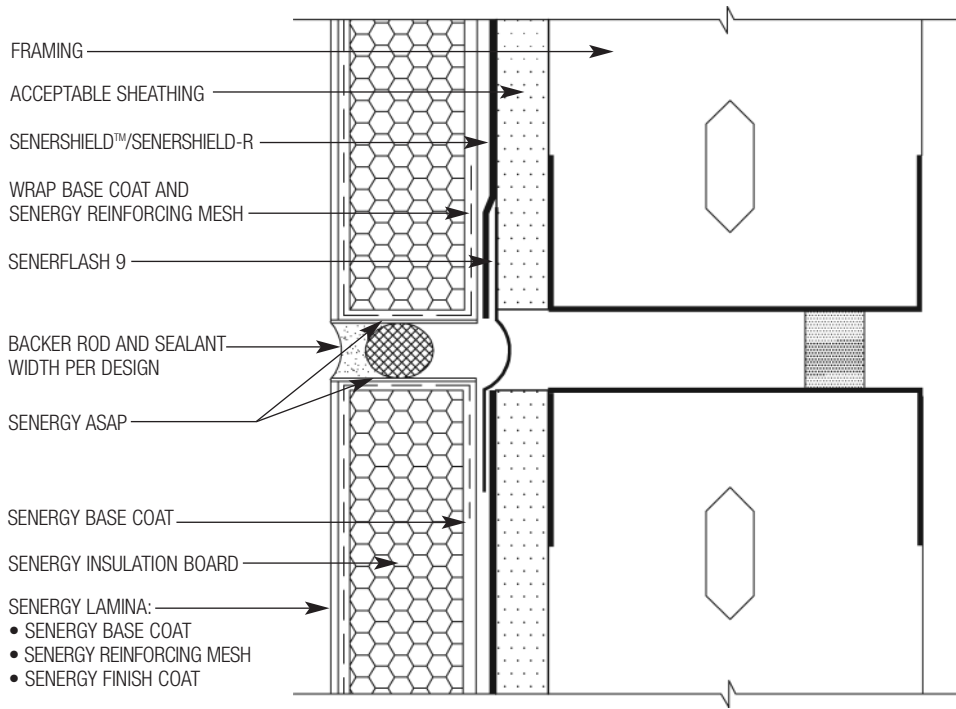
SWB-14 TYPICAL EXPANSION JOINT DETAIL AT FLOORLINE



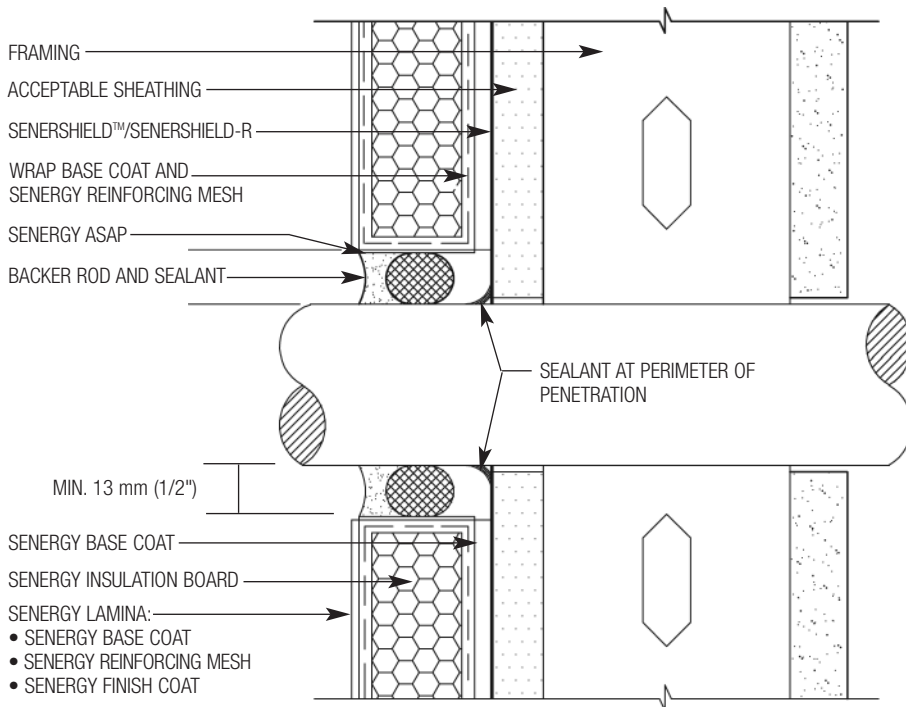
SWB-15 TYPICAL EXPANSION JOINT AT CHANGE IN SUBSTRATE



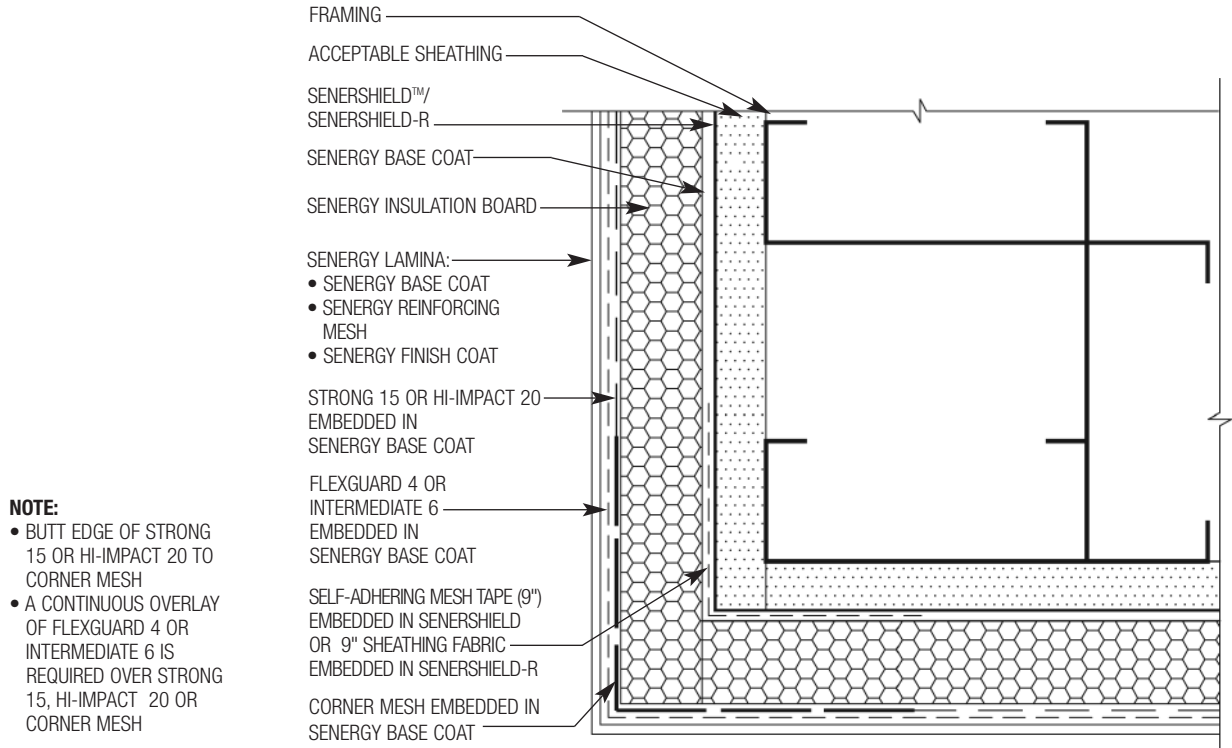
SWB-16 TYPICAL TERMINATION AT SOFFIT/GABLE END



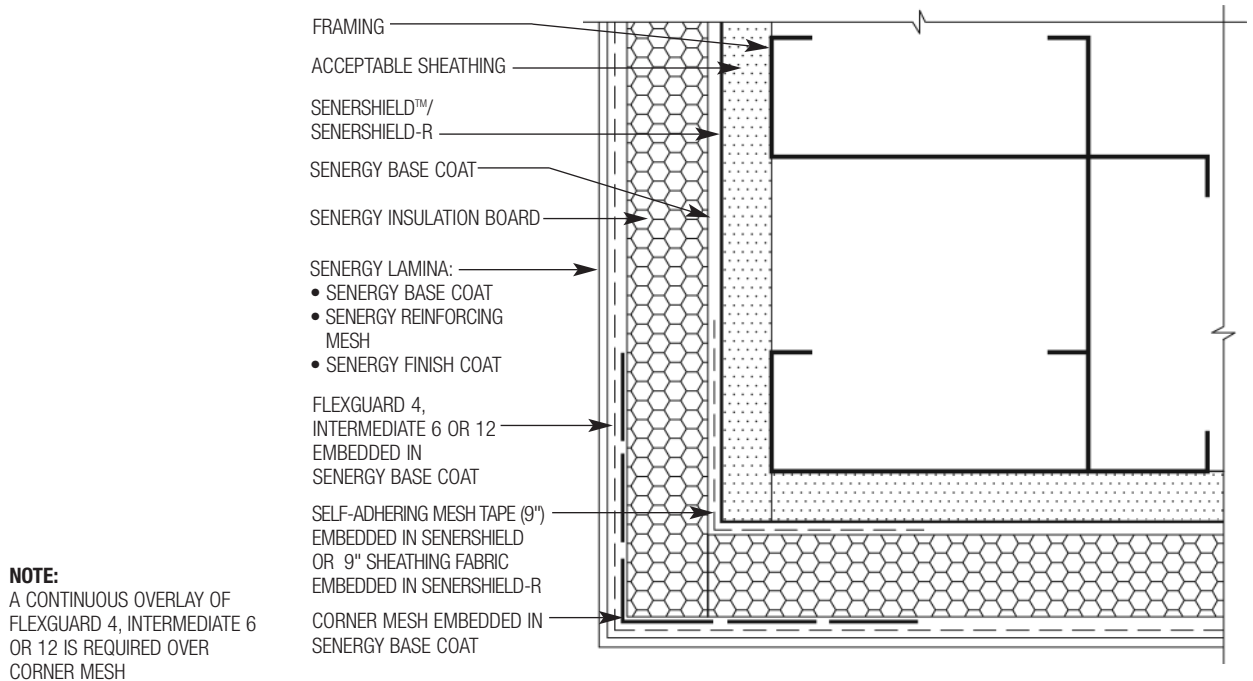
SWB-17 TYPICAL EXPANSION JOINT DETAIL (PLAN VIEW)



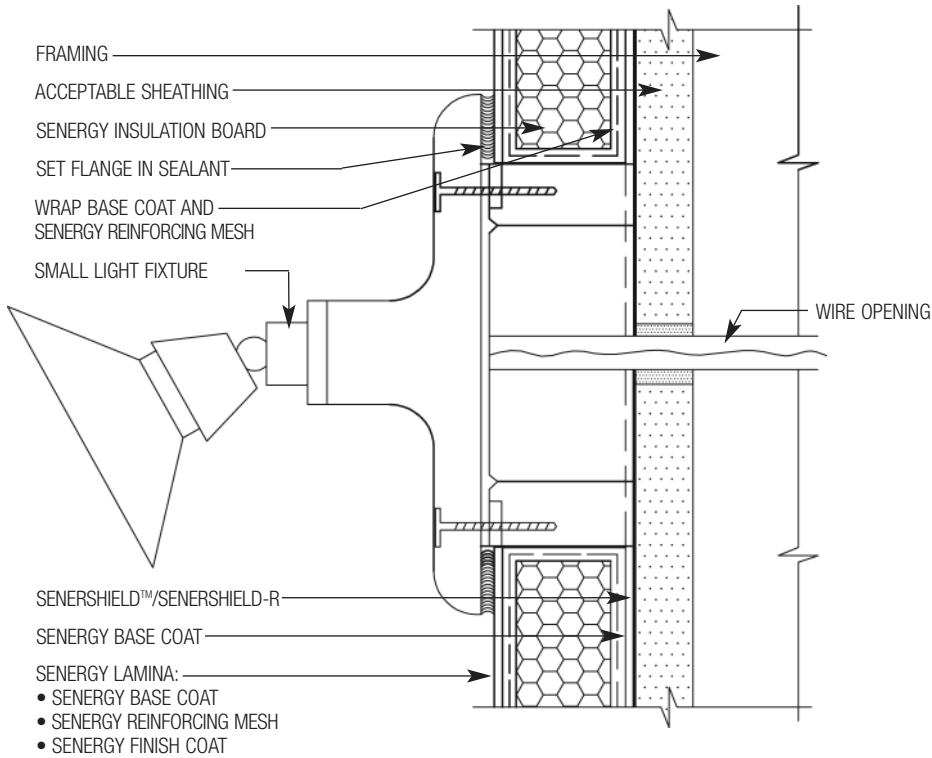
SWB-18 TYPICAL PIPE PENETRATION



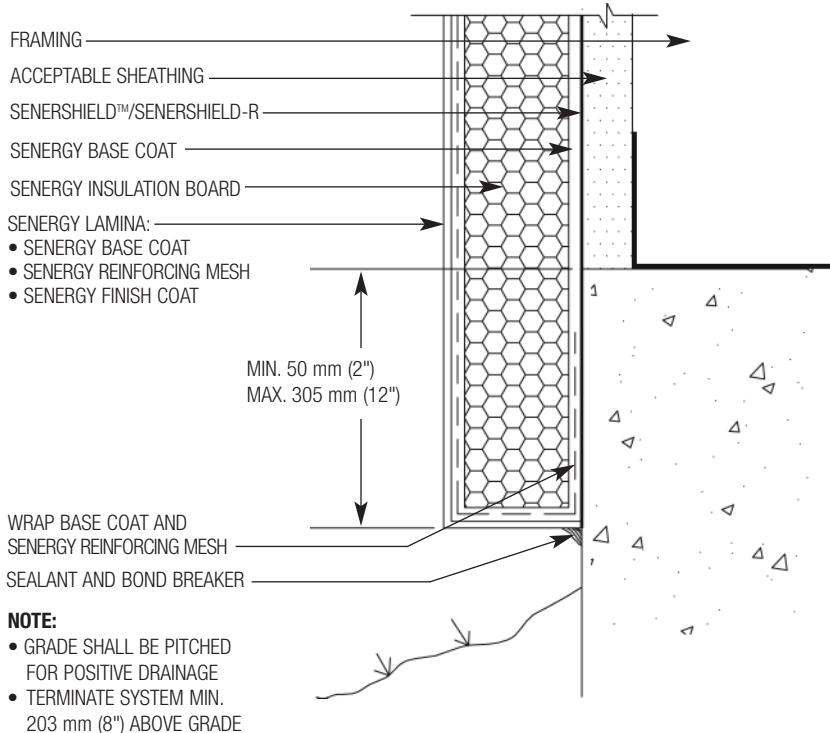
SWB-19 TYPICAL CORNER MESH APPLICATION WITH STRONG 15 OR HI-IMPACT 20 (PLAN VIEW)



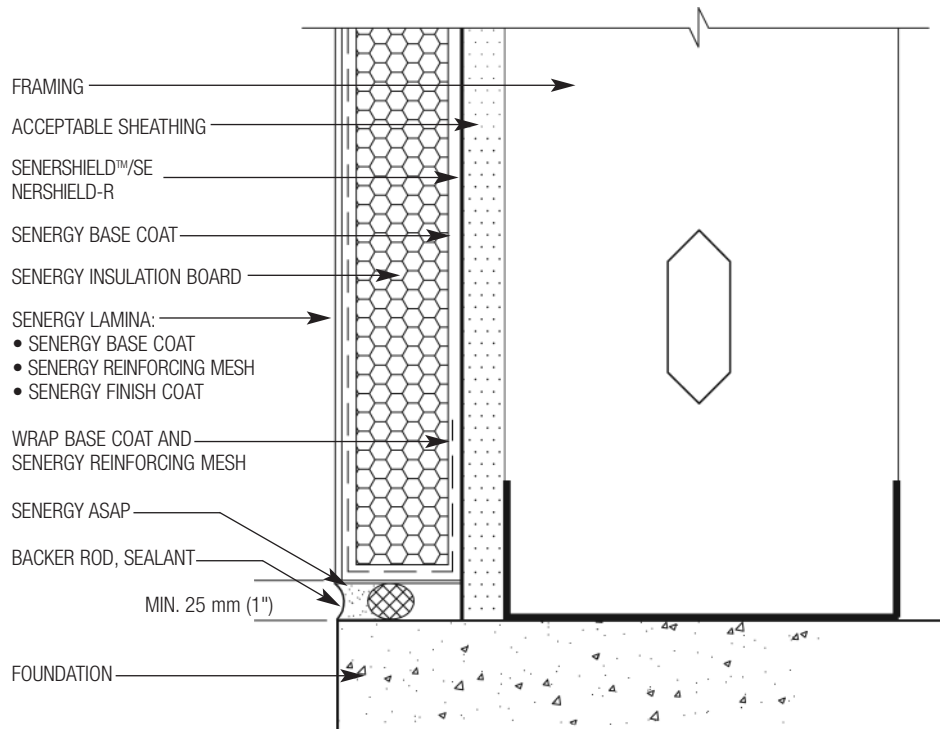
SWB-20 TYPICAL CORNER MESH APPLICATION WITH FLEXGUARD 4, INTERMEDIATE 6 OR 12 (PLAN VIEW)



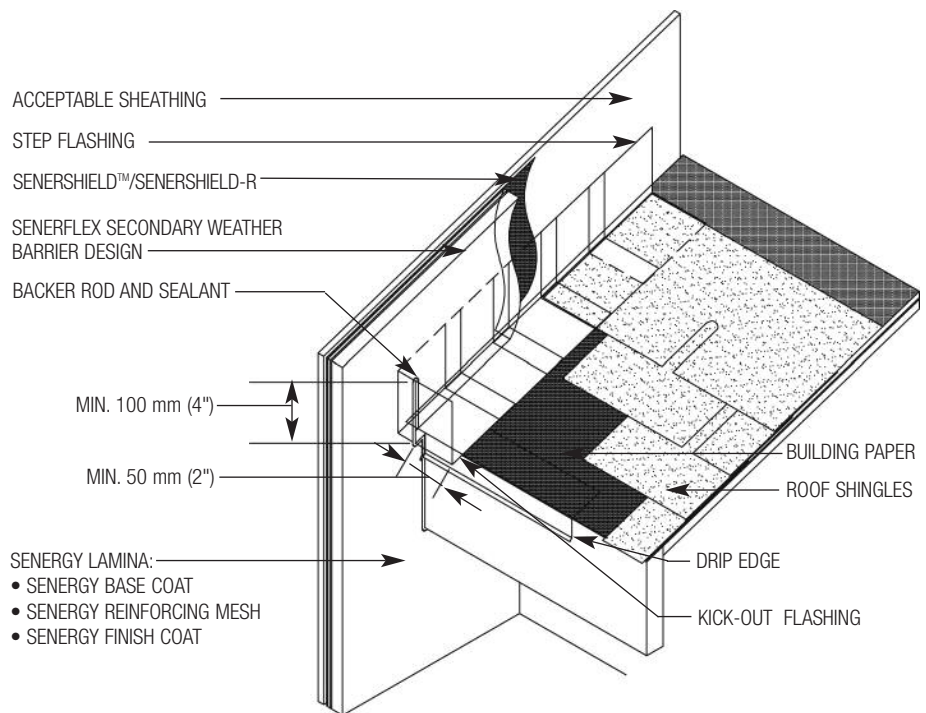
SWB-21 TYPICAL LIGHT FIXTURE



SWB-22 TYPICAL TERMINATION AT FOUNDATION



SWB-23 TYPICAL TERMINATION AT FOUNDATION (FLUSH)



NOTE:

- KICK-OUT FLASHING MUST BE ANGLED 100° MIN. TO ALLOW FOR PROPER DRAINAGE.
- KICK-OUT FLASHING SEAMS MUST BE SOLDERED OR SEALED WITH APPROPRIATE SEALANT.
- TERMINATE SENERFLEX SECONDARY WEATHER BARRIER DESIGN MIN. 50 mm (2") ABOVE ROOF.

SWB-24 TYPICAL KICK-OUT FLASHING DETAIL

NOTES

Note

BASF Wall Systems is an operating unit of BASF Construction Chemicals, LLC. (herein after referred to as "BASF Wall Systems")

Residential Policy

On one and two-family residential framed construction, BASF Wall Systems requires that the wall system selected be one that includes provisions for moisture drainage. The choices include Senturion® line of water managed EIFS, commercial Senerflex® Wall Systems integrating moisture management features, Senergy Stucco Wall System, and Senergy Cement-Board Stucco™ Systems. Senergy Exterior Surfacing Systems for insulating concrete forms are also acceptable. There are no exceptions to this policy. Under no circumstances will BASF Wall Systems warrant the use of any other system on this type of construction without expressed written authorization from BASF Wall Systems [Residential construction using EIFS on masonry (CMU) or poured concrete does not require the additional water management provisions described above.] See the Senergy Residential Policy Bulletin for a more detailed discussion of this topic. Consult BASF Wall Systems Technical Services Department for specific recommendations concerning all other applications. Consult the Senergy web-site, www.senergy.cc for additional information about products and systems and for updated literature.

Disclaimer

This information and all further technical advice are based on BASF Wall Systems' present knowledge and experience. However, BASF assumes no liability for providing such information and advice including the extent to which such information and advice may relate to existing third party intellectual property rights, especially patent rights. In particular, BASF Wall Systems disclaims any and all CONDITIONS AND WARRANTIES, WHETHER EXPRESS OR IMPLIED, INCLUDING THE IMPLIED WARRANTIES OF FITNESS FOR A PARTICULAR PURPOSE OR MERCHANTABILITY. BASF WALL SYSTEMS SHALL NOT BE RESPONSIBLE FOR CONSEQUENTIAL, INDIRECT OR INCIDENTAL DAMAGES (INCLUDING LOSS OF PROFITS) OF ANY KIND. BASF Wall Systems reserves the right to make any changes according to technological progress or further developments. It is the customer's responsibility and obligation to carefully inspect and test any incoming goods. Performance of the product(s) described herein should be verified by testing and carried out only by qualified experts. It is the sole responsibility of the customer to carry out and arrange for any such testing. Reference to trade names used by other companies is neither a recommendation, nor an endorsement of any product and does not imply that similar products could not be used.

BASF Wall Systems

3550 St. Johns Bluff Road South
Jacksonville, FL 32224-2614
Phone 800 • 221 • 9255
Fax 904 • 996 • 6300
www.senergy.cc