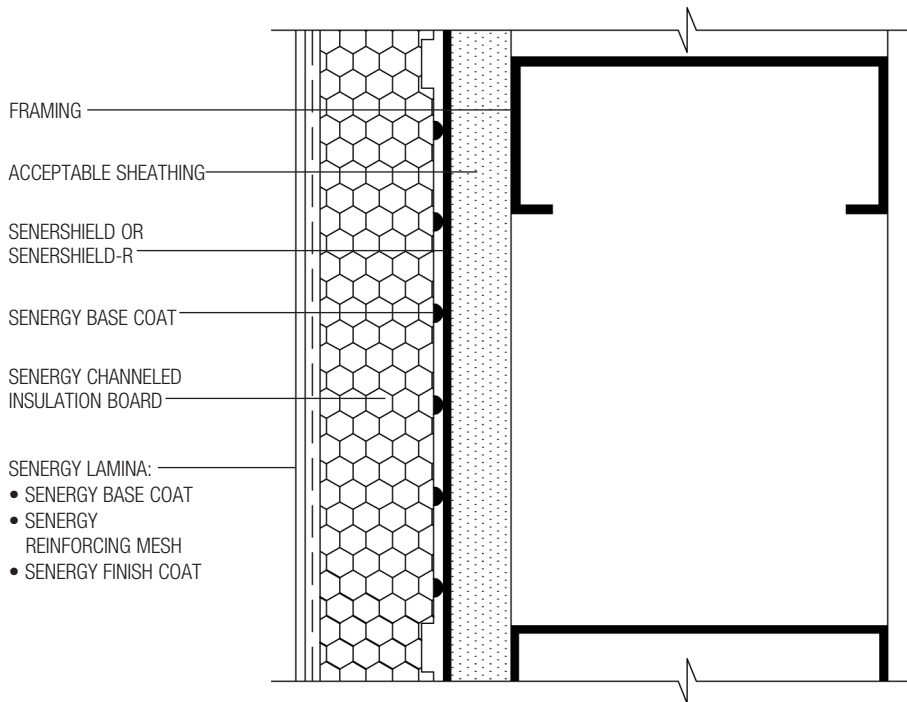


Senerflex Channeled Insulation Design

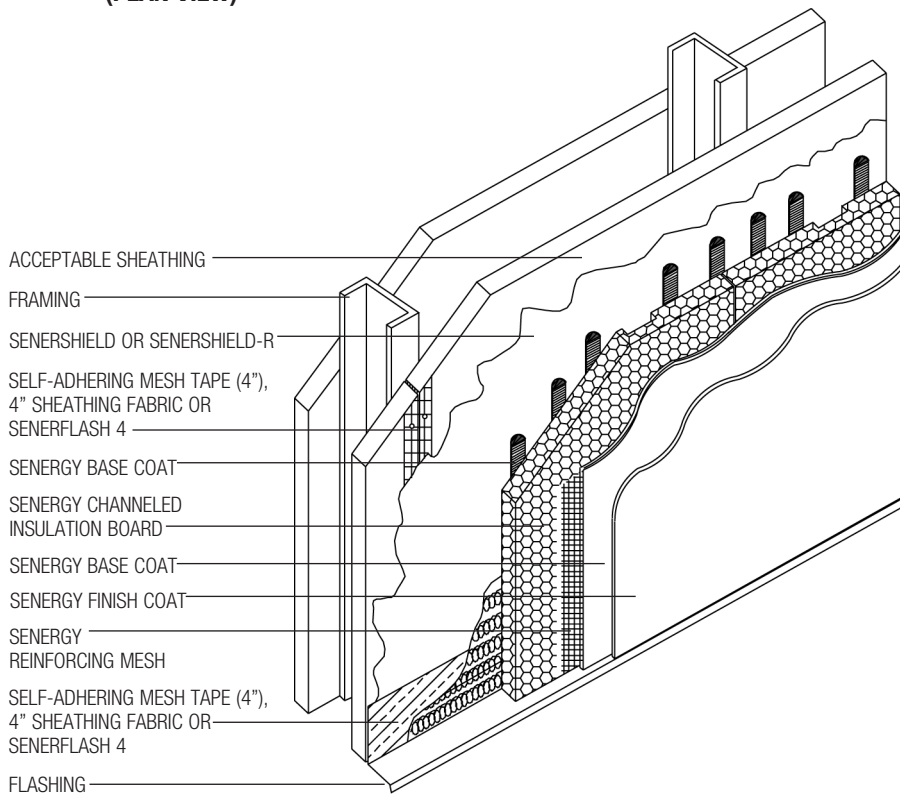
Typical Details



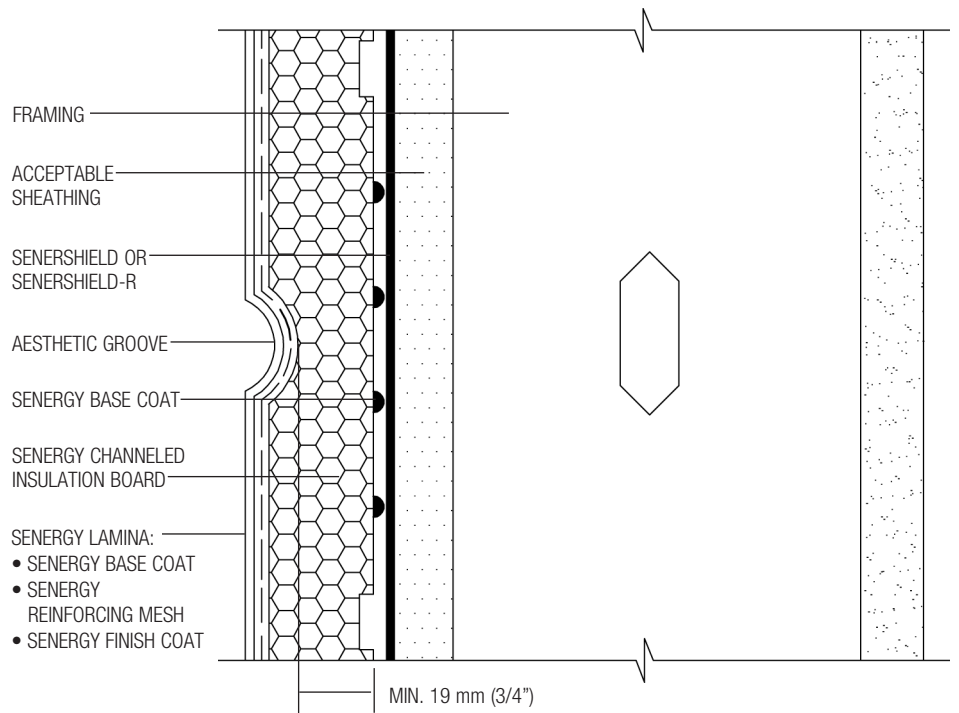
1. Senerflex Channeled Insulation Design Application (Plan View)
2. Senerflex Channeled Insulation Design Installation
3. Aesthetic Groove (Plan View)
4. Insulation Boards /Reinforcing Mesh Application at Openings
5. Window Head (Flush) (Plan View)
6. Window Head (Recessed) (Plan View)
7. Window Jamb Detail (Flush)
8. Window Jamb Detail (Recessed)
9. Window Sill Detail (Flush)
10. Window Sill Detail (Recessed)
11. Roof Edge Flashing Detail
12. Metal Coping Detail
13. Parapet Cap Detail
14. Expansion Joint Detail at Floorline
15. Expansion Joint at Change in Substrate
16. Section at Fascia / Soffit
17. Expansion Joint Detail
18. Pipe Penetration
19. Corner Mesh Application with STRONG 15 or HI-IMPACT 20 (Plan View)
20. Corner Mesh Application with FLEXGUARD 4, INTERMEDIATE 6 or 12 (Plan View)
21. Light Fixture
22. Termination at Foundation
23. Termination at Foundation (Flush)
24. Channeled Insulation Profile
25. Kick-out Flashing Detail



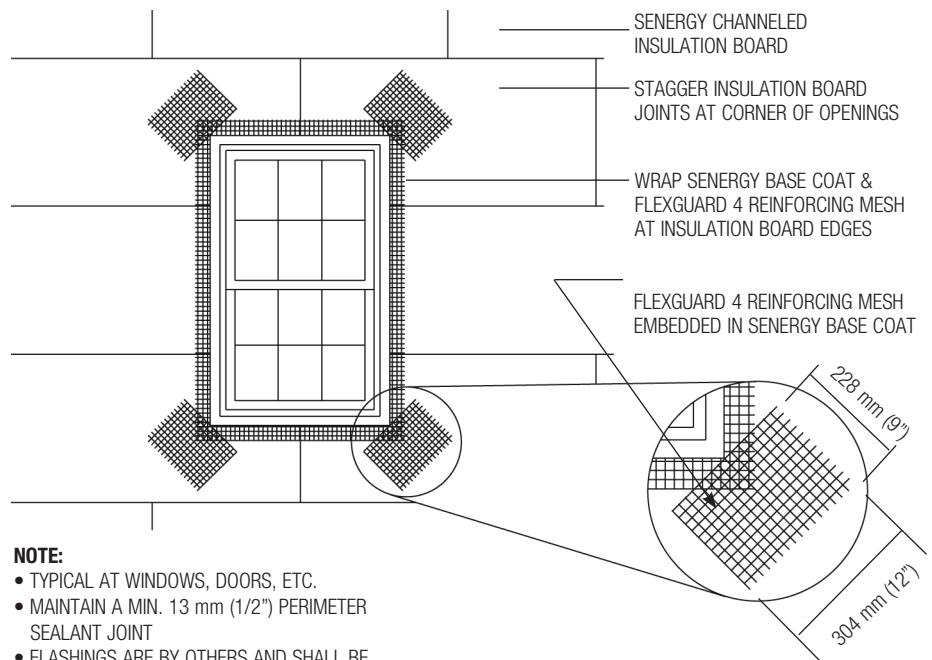
CI-01 TYPICAL SENERFLEX CHANNELED INSULATION DESIGN APPLICATION (PLAN VIEW)



CI-02 TYPICAL SENERFLEX CHANNELED INSULATION DESIGN INSTALLATION

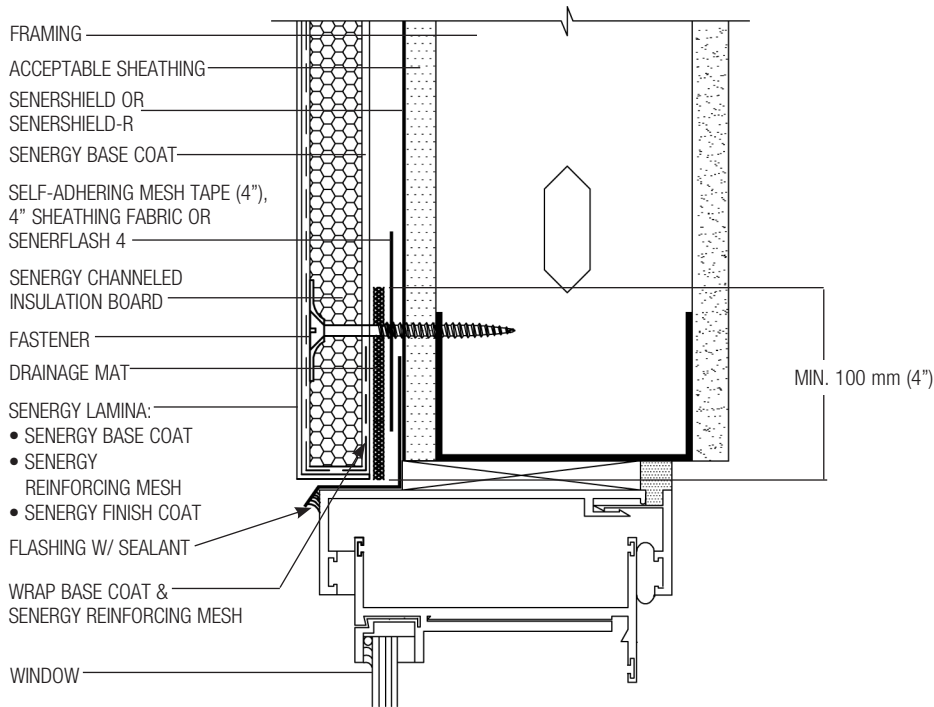


CI-03 TYPICAL AESTHETIC GROOVE (PLAN VIEW)

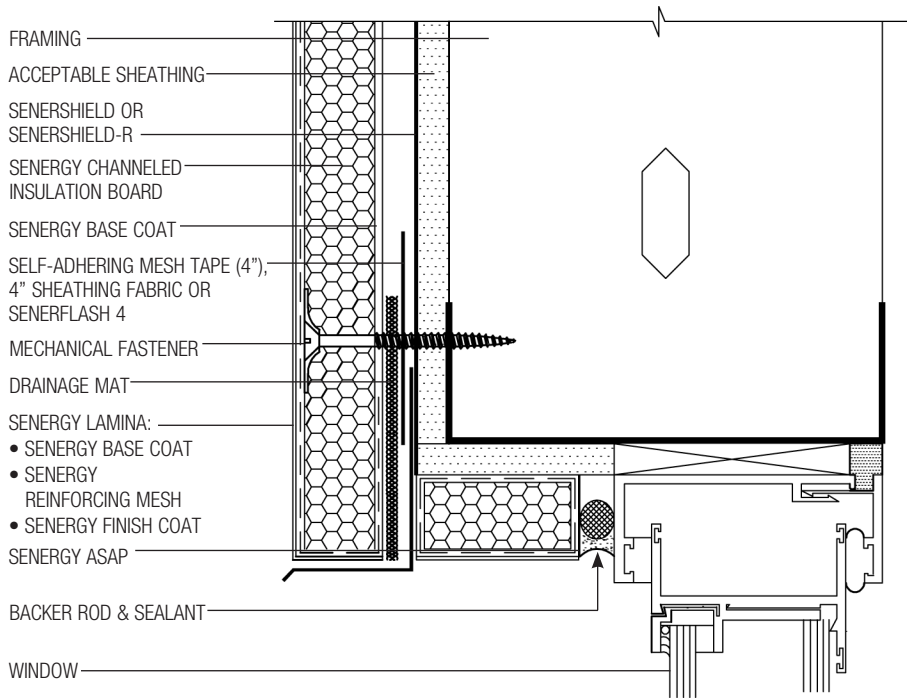


- NOTE:**
- TYPICAL AT WINDOWS, DOORS, ETC.
 - MAINTAIN A MIN. 13 mm (1/2") PERIMETER SEALANT JOINT
 - FLASHINGS ARE BY OTHERS AND SHALL BE AS PER DESIGN/CODE REQUIREMENTS

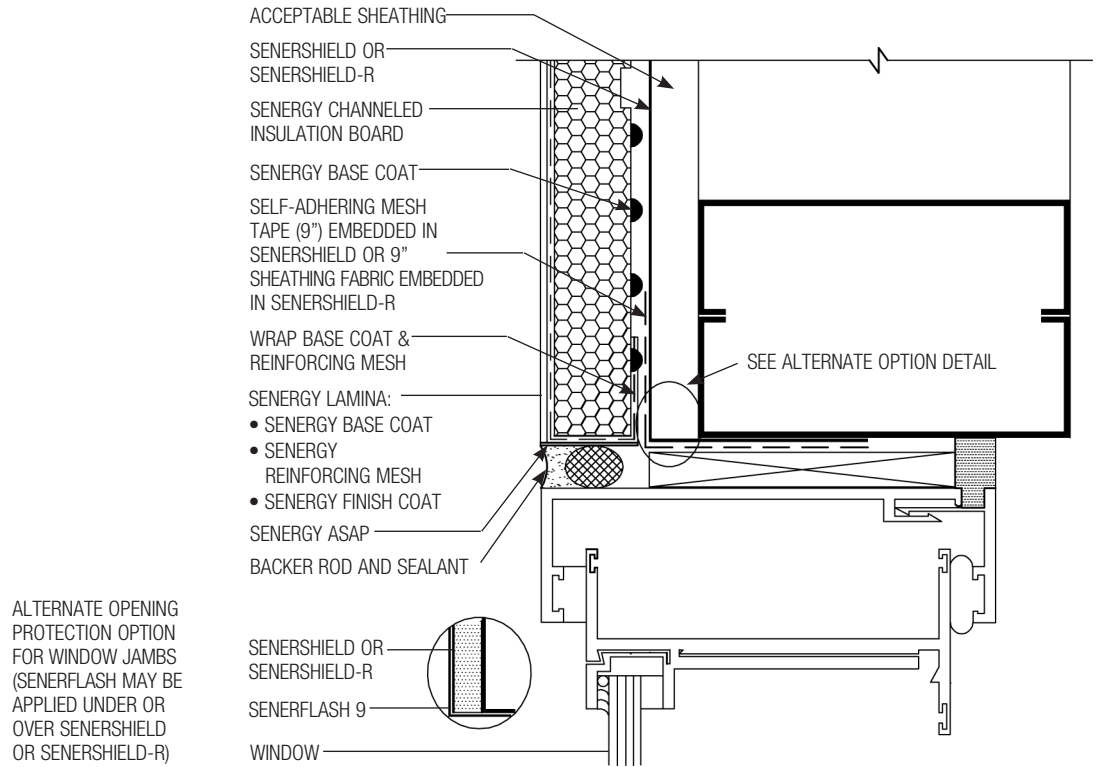
CI-04 TYPICAL INSULATION BOARDS/REINFORCING MESH APPLICATION AT OPENINGS



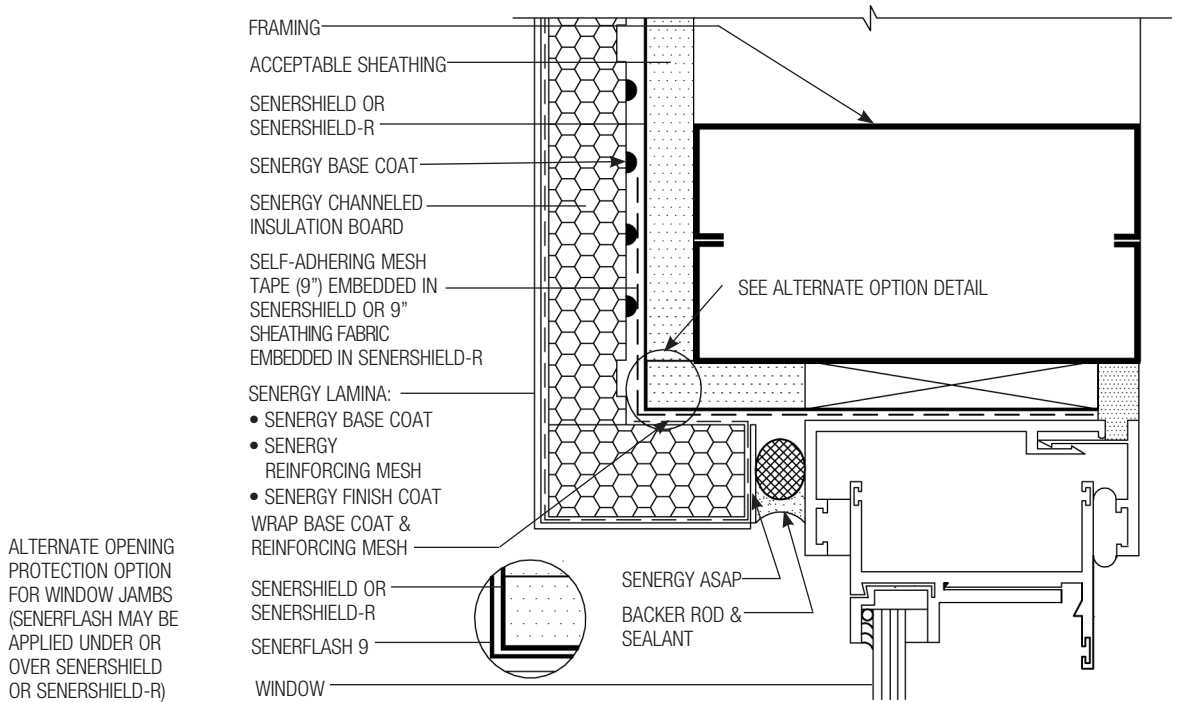
CI-05 TYPICAL WINDOW HEAD (FLUSH)



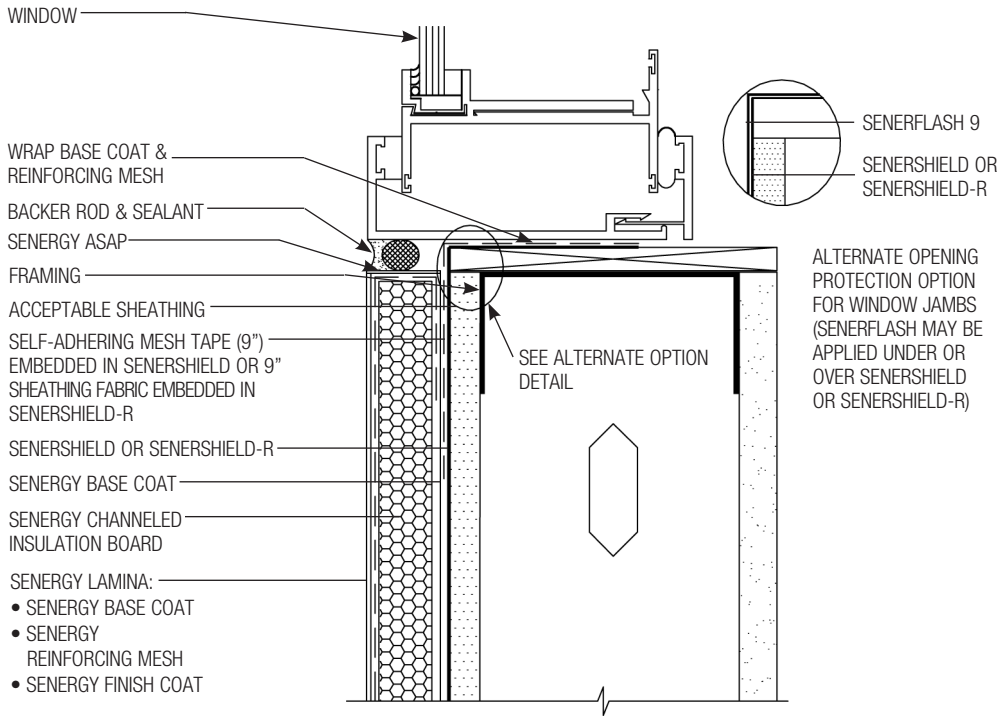
CI-06 TYPICAL WINDOW HEAD (RECESSED)



CI-07 TYPICAL WINDOW JAMB DETAIL (FLUSH) (PLAN VIEW)

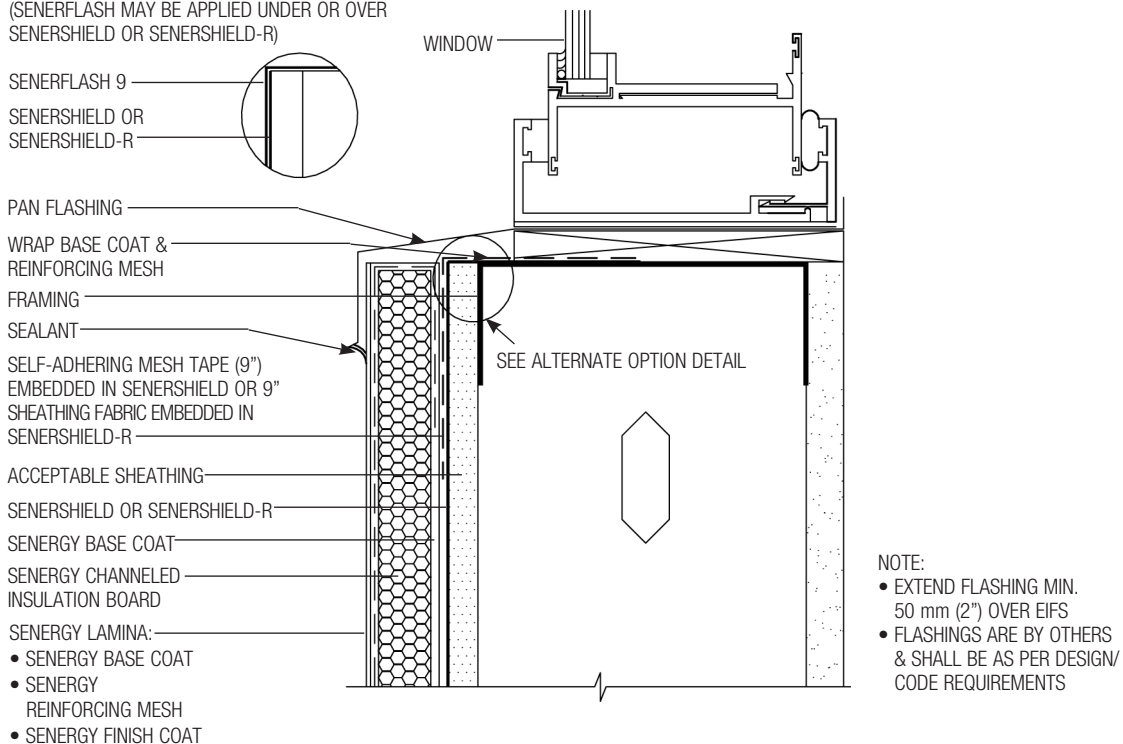


CI-08 TYPICAL WINDOW JAMB DETAIL (RECESSED) (PLAN VIEW)

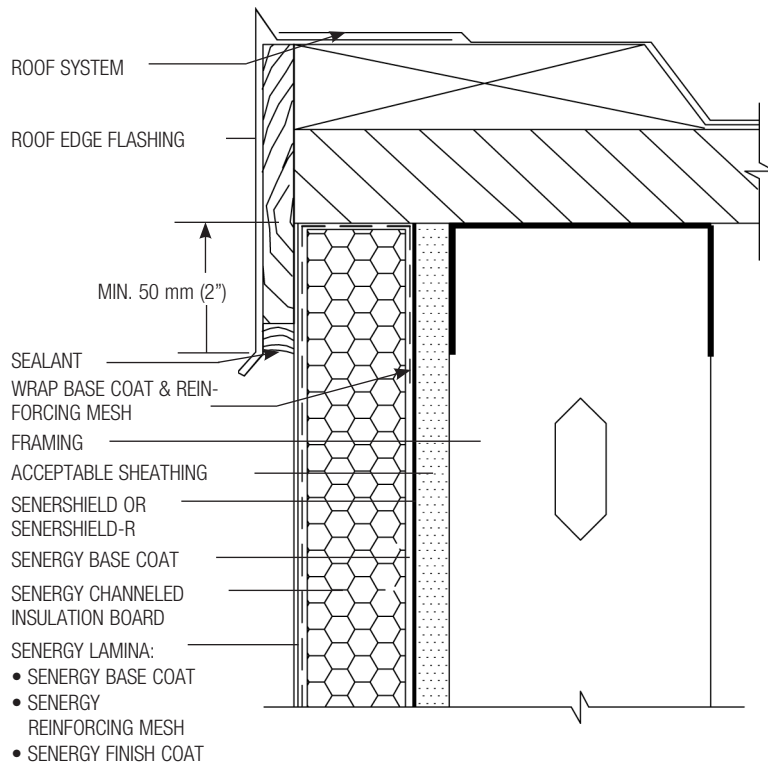


CI-09 TYPICAL WINDOW SILL DETAIL (FLUSH)

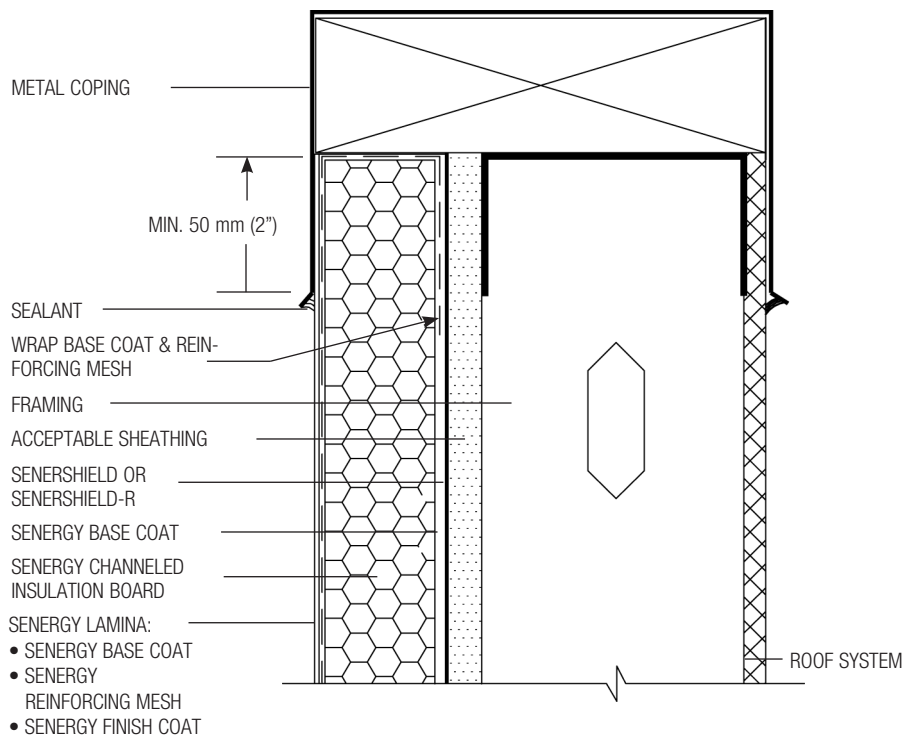
ALTERNATE OPENING PROTECTION OPTION FOR WINDOW SILL (SENERFLASH MAY BE APPLIED UNDER OR OVER SENERSHIELD OR SENERSHIELD-R)



CI-10 TYPICAL WINDOW SILL DETAIL (RECESSED)



CI-11 TYPICAL ROOF EDGE FLASHING DETAIL



CI-12 TYPICAL METAL COPING DETAIL

NOTE:
FLASHINGS ARE BY OTHERS
& SHALL BE AS PER DESIGN/
CODE REQUIREMENTS

SELF-ADHERING MESH
TAPE (9") EMBEDDED IN
SENERSHIELD OR 9"
SHEATHING FABRIC EMBEDDED
IN SENERSHIELD-R

WRAP BASE COAT &
REINFORCING MESH

FRAMING

ACCEPTABLE SHEATHING

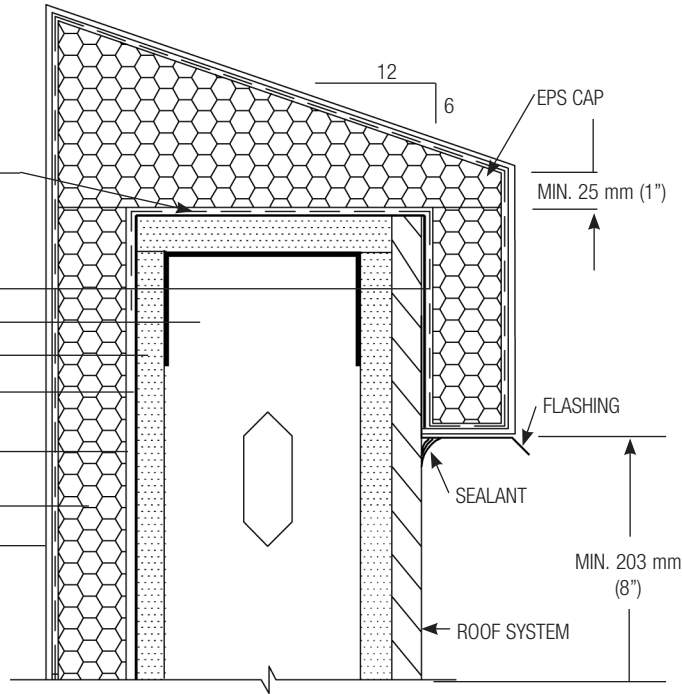
SENERSHIELD OR
SENERSHIELD-R

SENERGY BASE COAT

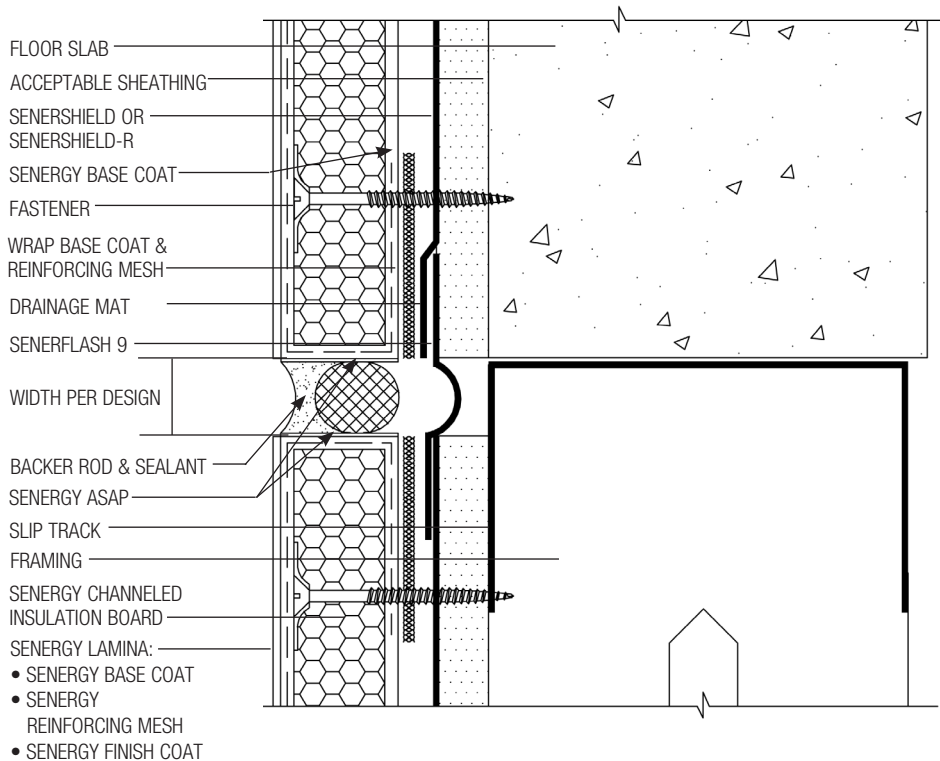
SENERGY CHANNELED
INSULATION BOARD

SENERGY LAMINA:

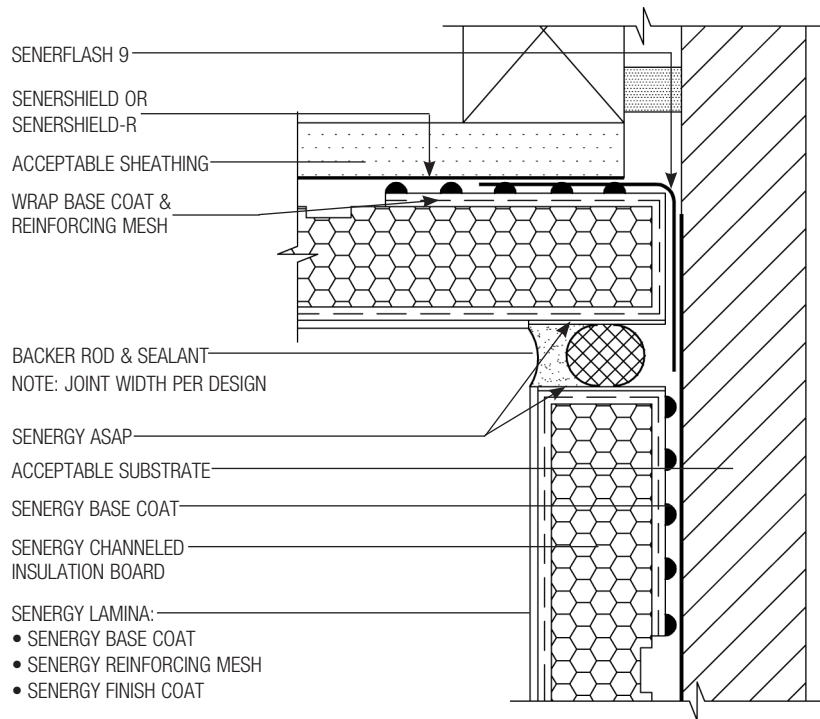
- SENERGY BASE COAT
- SENERGY
REINFORCING MESH
- SENERGY FINISH COAT



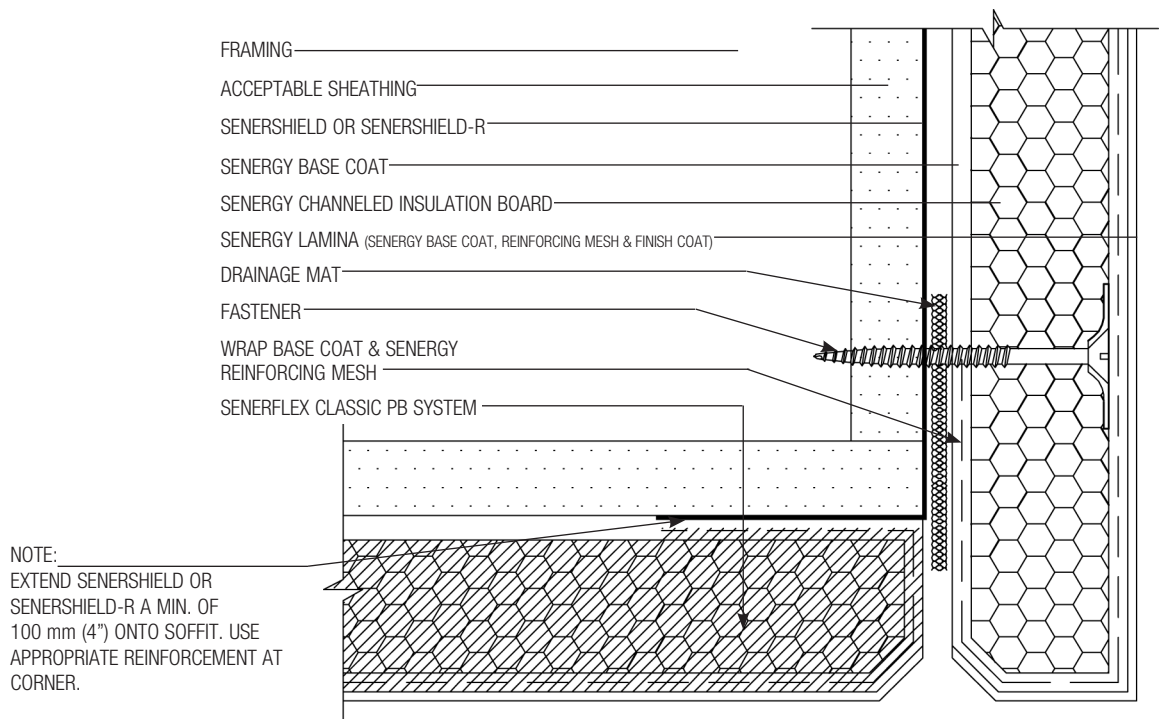
CI-13 TYPICAL PARAPET CAP DETAIL



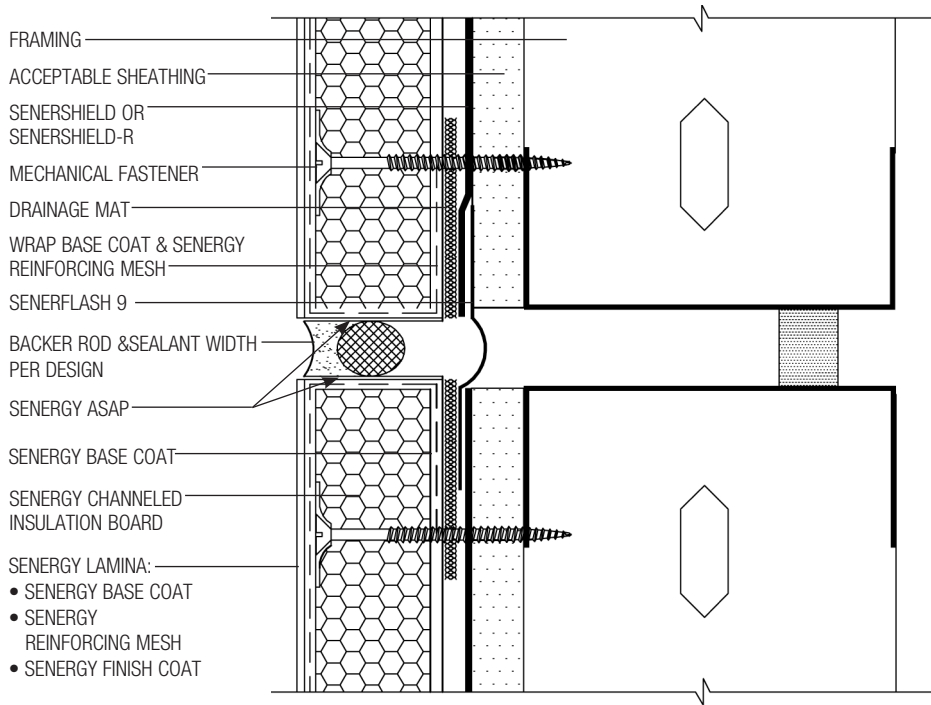
CI-14 TYPICAL EXPANSION JOINT DETAIL AT FLOORLINE



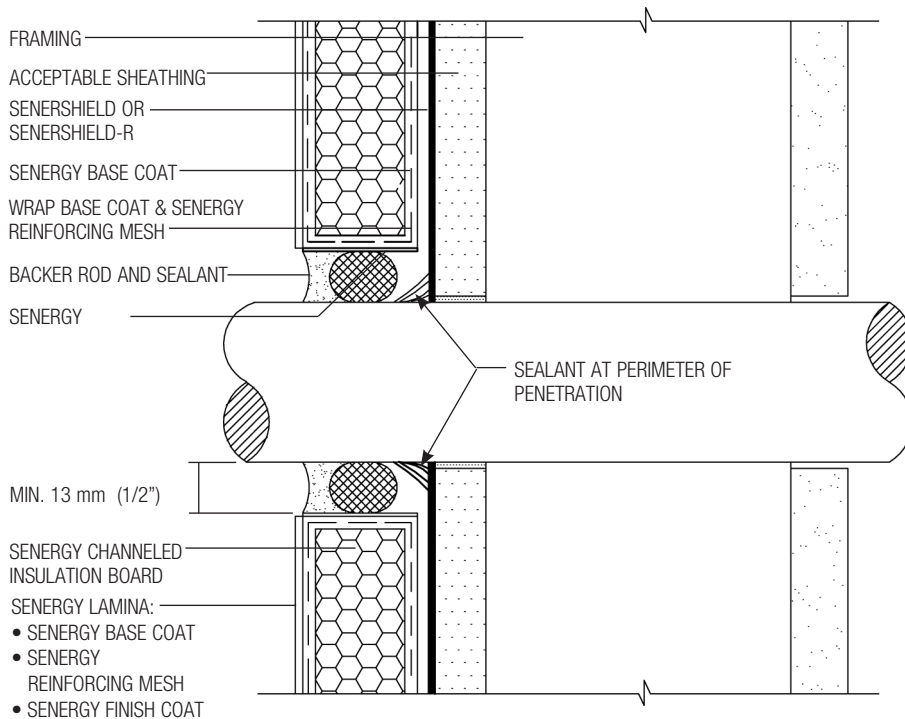
CI-15 TYPICAL EXPANSION JOINT AT CHANGE IN SUBSTRATE



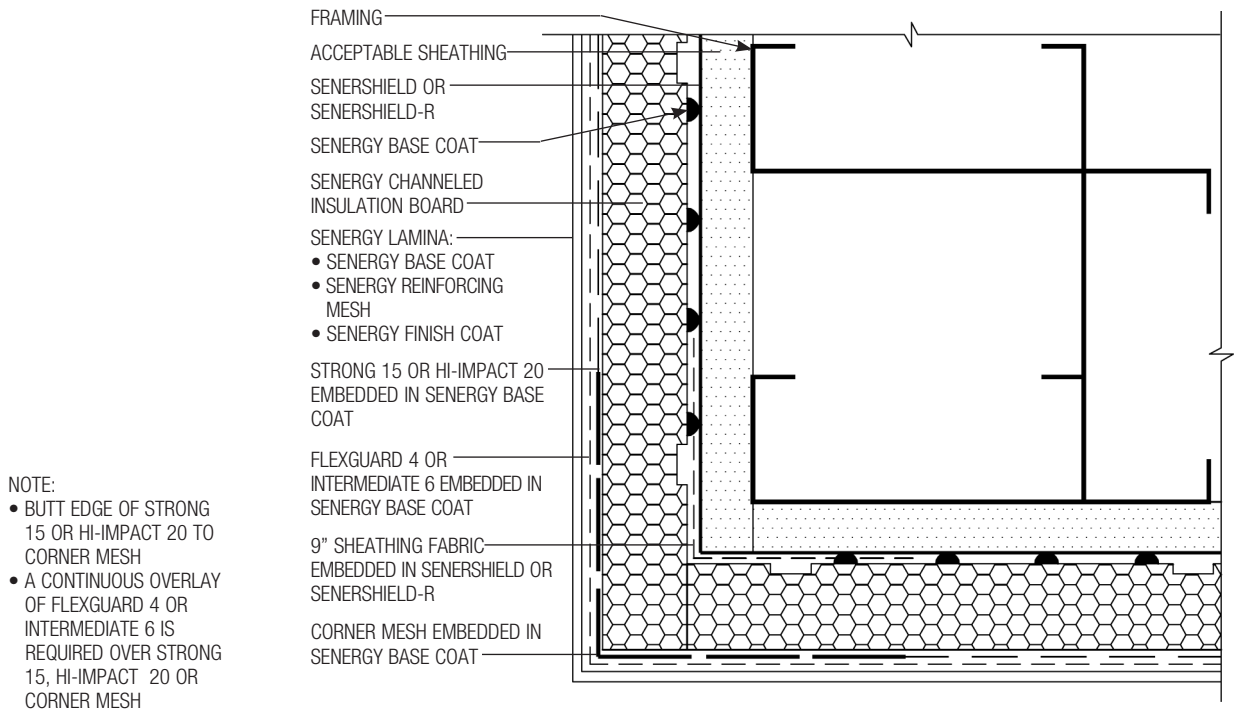
CI-16 TYPICAL SECTION AT FASCIA/SOFFIT



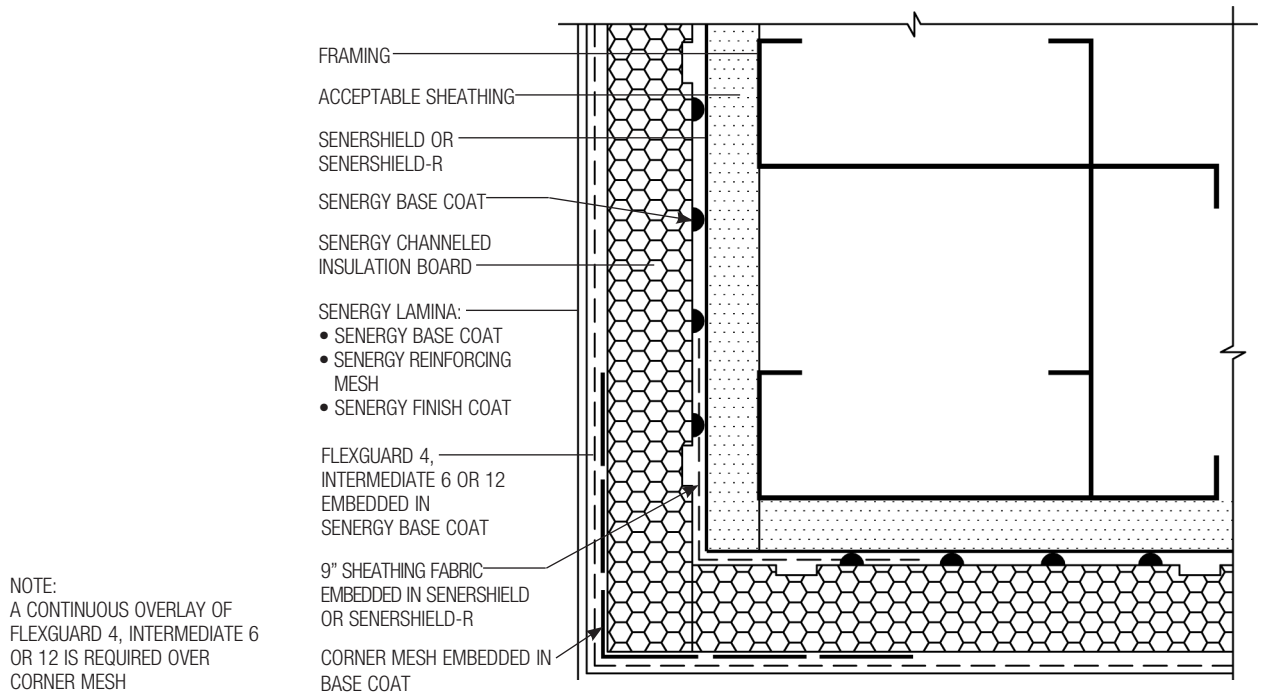
CI-17 TYPICAL EXPANSION JOINT DETAIL



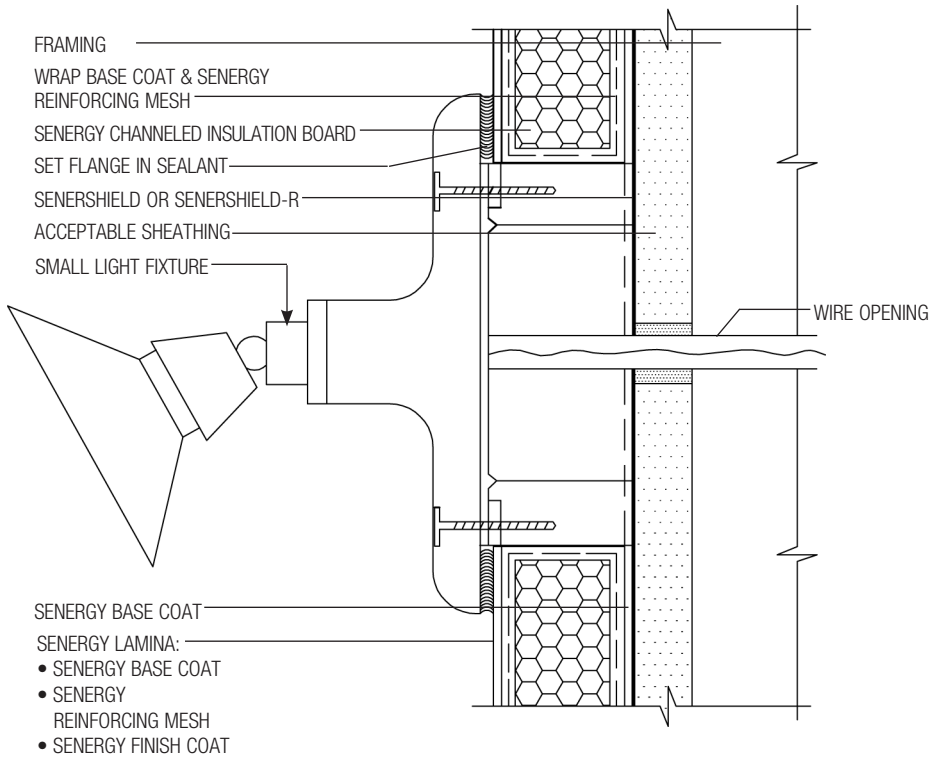
CI-18 TYPICAL PIPE PENETRATION



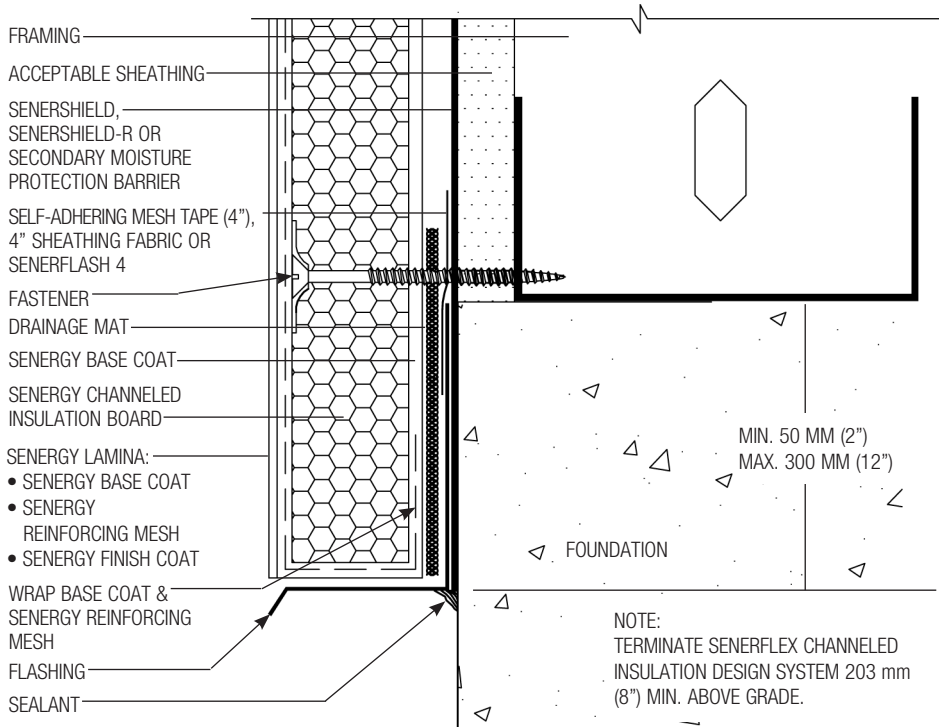
CI-19 TYPICAL CORNER MESH APPLICATION WITH STRONG 15 OR HI-IMPACT 20 (PLAN VIEW)



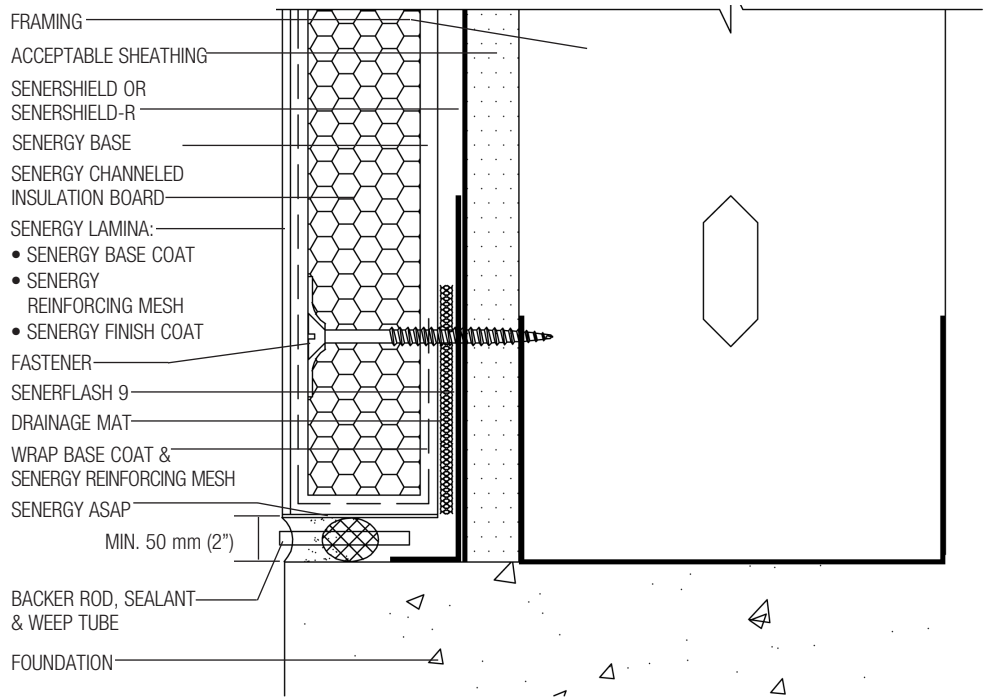
CI-20 TYPICAL CORNER MESH APPLICATION WITH FLEXGUARD 4, INTERMEDIATE 6 OR 12 (PLAN VIEW)



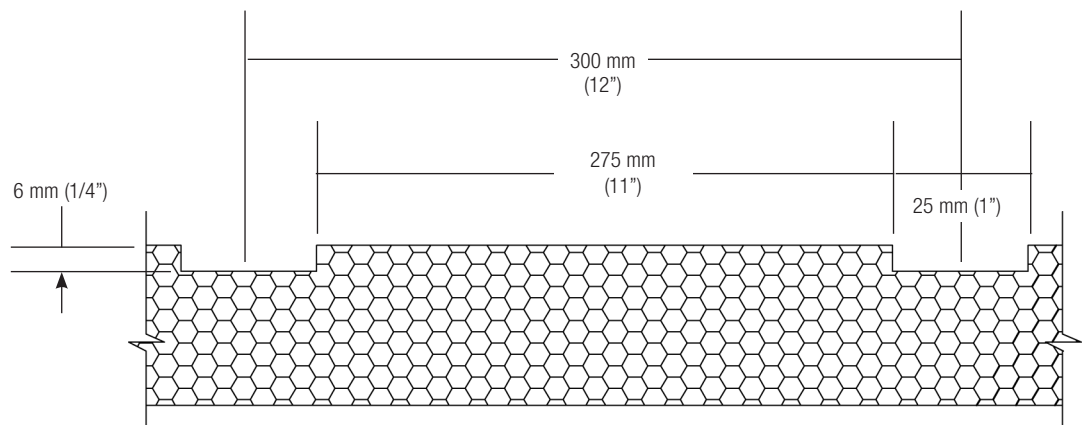
CI-21 TYPICAL LIGHT FIXTURE



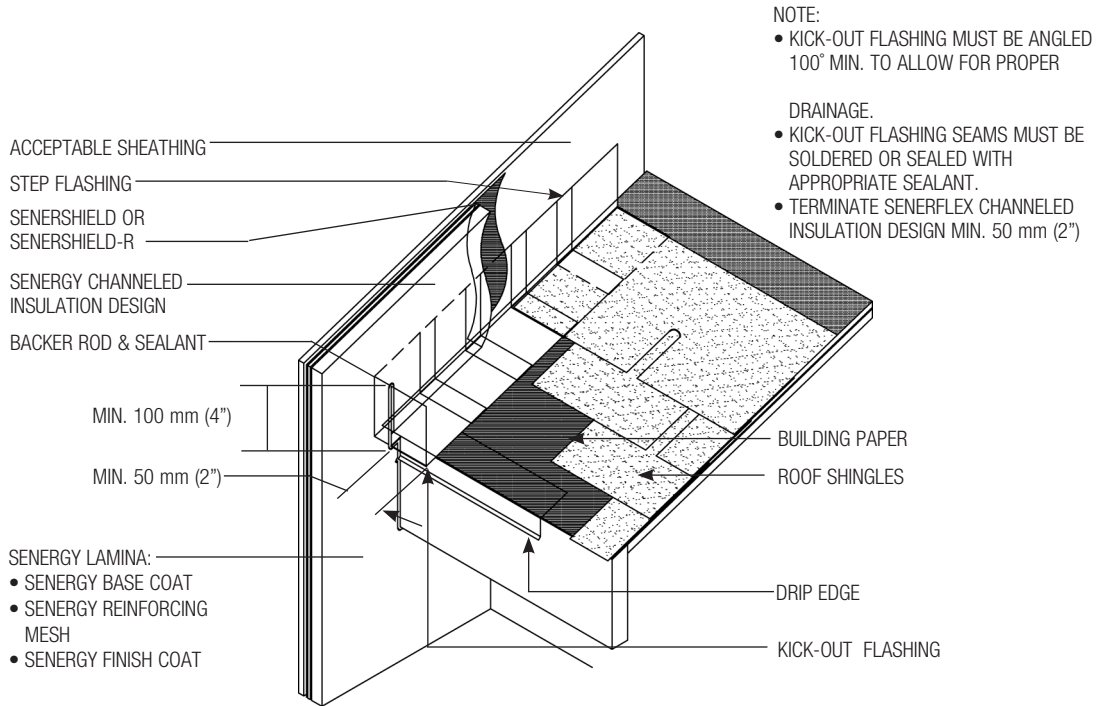
CI-22 TYPICAL TERMINATION AT FOUNDATION



CI-23 TYPICAL TERMINATION AT FOUNDATION (FLUSH)



CI-24 TYPICAL CHANNELED INSULATION PROFILE



CI-25 TYPICAL KICK-OUT FLASHING DETAIL

General Notes

BASF Wall Systems is an operating unit of BASF Construction Chemicals, LLC. (herein after referred to as "BASF Wall Systems"). These details are presented in good faith by BASF Wall Systems and represent typical and/or general conditions. They are offered as a guide for consideration to assist the designer, specifier, installer and/or owner. The responsibility remains with the user for the design of any system. For conditions not shown, consult BASF Wall Systems for specific recommendations. Consult current Senergy technical bulletins for such information as acceptable sealants, insulation attachment methods, installation of air/weather barriers, residential policy, code and test reports, geo-climatic considerations, etc. Installation requirements for sealant (joint size configuration, primers, bond breakers) shall be in accordance with sealant manufacturer's specifications and instructions.

Technical Support

Consult the BASF Wall Systems Technical Services Department for specific recommendations concerning all other applications. Consult the Senergy website, www.senergy.basf.com, for additional information about products and systems and for updated literature.

Residential Policy

On one and two-family residential framed construction, BASF Wall Systems requires that the wall system selected be one that includes provisions for water drainage. The choices include Senturion® line of water drainage EIFS, commercial Senerflex® Channeled Adhesive or Channeled Insulation Design, Senergy Stucco Wall System, and Senergy Cement-Board Stucco™ Systems. There are no exceptions to this policy. Under no circumstances will BASF Wall Systems warrant the use of any other system on this type of construction without expressed written authorization from BASF Wall Systems [Residential construction using EIFS on masonry (CMU) or poured concrete does not require the additional water drainage provisions described above. Senergy Exterior Surfacing Systems for insulating concrete forms are also acceptable.] See the Senergy Residential Policy Bulletin for a more detailed discussion of this topic. Consult our Technical Services Department for specific recommendations concerning all other applications. Consult the Senergy website, www.senergy.basf.com for additional information about products and systems and for updated literature.

Disclaimer

This information and all further technical advice are based on BASF Wall Systems' present knowledge and experience. However, BASF assumes no liability for providing such information and advice including the extent to which such information and advice may relate to existing third party intellectual property rights, especially patent rights. In particular, BASF Wall Systems disclaims any and all CONDITIONS AND WARRANTIES, WHETHER EXPRESS OR IMPLIED, INCLUDING THE IMPLIED WARRANTIES OF FITNESS FOR A PARTICULAR PURPOSE OR MERCHANTABILITY. BASF WALL SYSTEMS SHALL NOT BE RESPONSIBLE FOR CONSEQUENTIAL, INDIRECT OR INCIDENTAL DAMAGES (INCLUDING LOSS OF PROFITS) OF ANY KIND. BASF Wall Systems reserves the right to make any changes according to technological progress or further developments. It is the customer's responsibility and obligation to carefully inspect and test any incoming goods. Performance of the product(s) described herein should be verified by testing and carried out only by qualified experts. It is the sole responsibility of the customer to carry out and arrange for any such testing. Reference to trade names used by other companies is neither a recommendation, nor an endorsement of any product and does not imply that similar products could not be used.

For the most current version of this literature, please visit our website at www.senergy.basf.com.