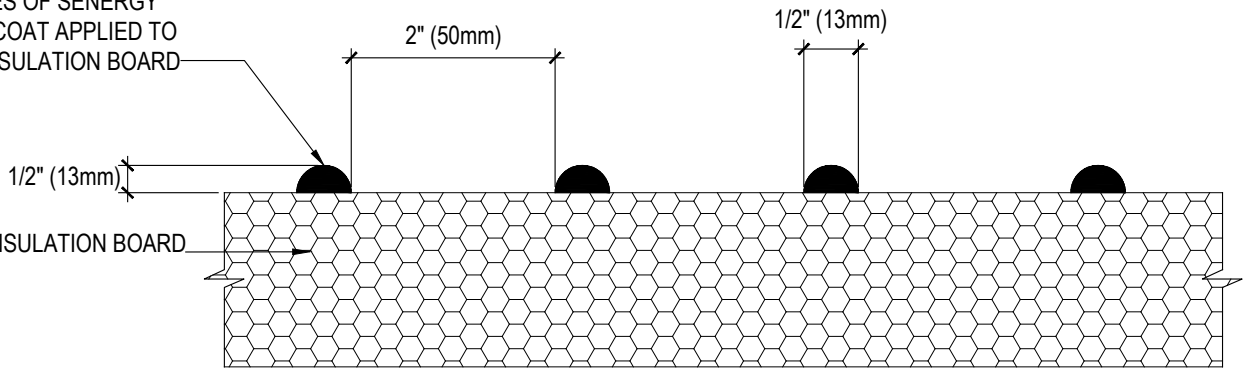


VERTICAL NOTCHES OF SENERGY
ADHESIVE / BASE COAT APPLIED TO
APPROVED EPS INSULATION BOARD



REV 180205

TYPICAL ADHESIVE PATTERN

SENERGY CHanneled ADHESIVE CI DESIGN

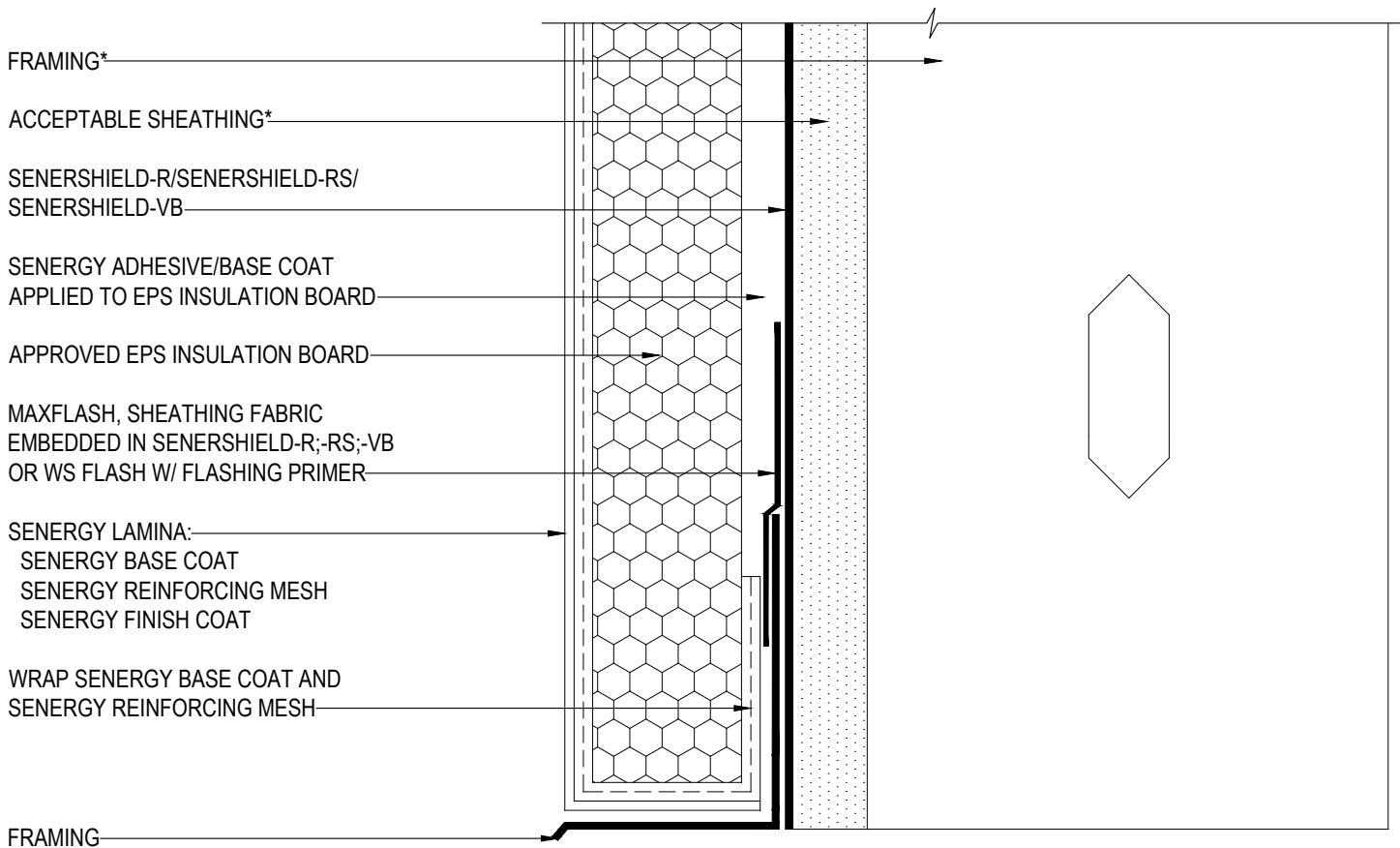
SCALE: NTS

01

Structure, substrates, flashing, and other items which are not part of the BASF Senergy *Channeled Adhesive CI Design* system are the responsibility of others. This detail is subject to change without notice. BASF Corporation - Wall Systems (herein after BASF Wall Systems) accepts no liability for the end use of this detail. For conditions not shown, consult BASF Wall Systems for review of specific detail.

■ - BASF

We create chemistry



*BY OTHERS

REV 180205

TYPICAL APPLICATION

SENERGY CHanneled ADHESIVE CI DESIGN

SCALE: NTS

02

Structure, substrates, flashing, and other items which are not part of the BASF Senergy *Channeled Adhesive CI Design* system are the responsibility of others. This detail is subject to change without notice. BASF Corporation - Wall Systems (herein after BASF Wall Systems) accepts no liability for the end use of this detail. For conditions not shown, consult BASF Wall Systems for review of specific detail.

BASF
We create chemistry

CMU*

SENERSHIELD-R/SENERSHIELD-RS/
SENERSHIELD-VB

SENERGY ADHESIVE/BASE COAT
APPLIED TO EPS INSULATION BOARD

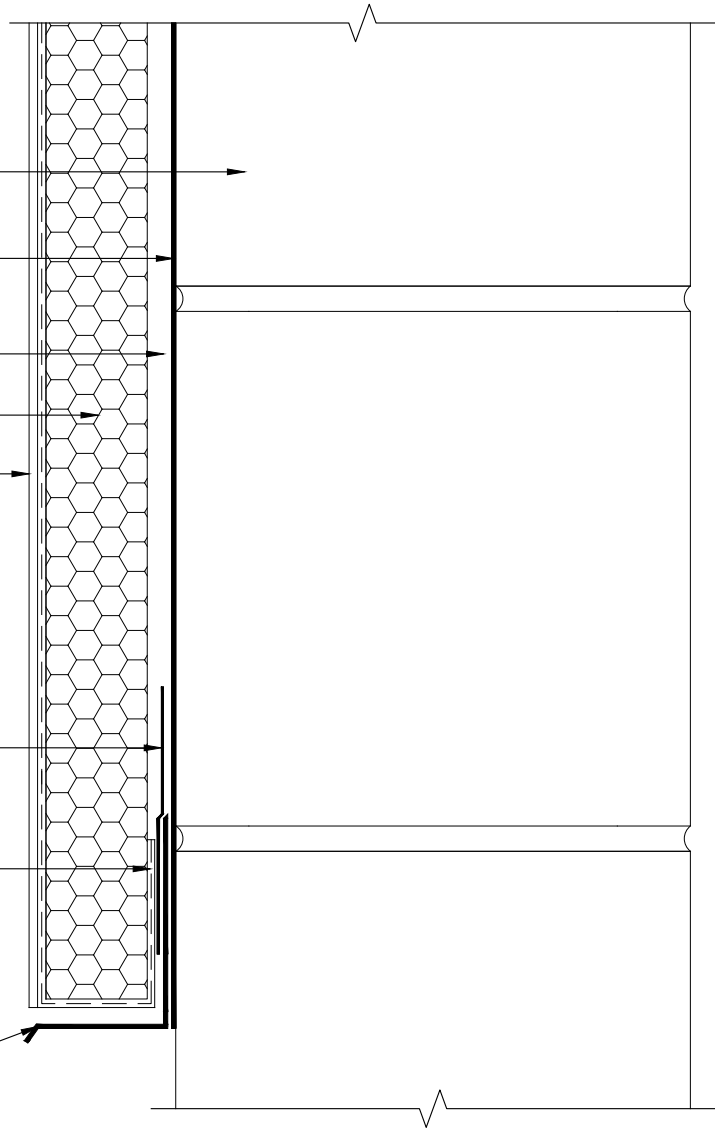
APPROVED EPS INSULATION BOARD

SENERGY LAMINA:
SENERGY BASE COAT
SENERGY REINFORCING MESH
SENERGY FINISH COAT

MAXFLASH, SHEATHING FABRIC
EMBEDDED IN SENERSHIELD-R;-RS;-VB,
OR WS FLASH W/ FLASHING PRIMER

WRAP SENERGY BASE COAT AND
SENERGY REINFORCING MESH

FLASHING*



*BY OTHERS

REV 180205

TYPICAL APPLICATION OVER CMU

SENERGY CHanneLED ADHESIVE CI DESIGN

SCALE: NTS

03

Structure, substrates, flashing, and other items which are not part of the BASF Senergy *Channeled Adhesive CI Design* system are the responsibility of others. This detail is subject to change without notice. BASF Corporation - Wall Systems (herein after BASF Wall Systems) accepts no liability for the end use of this detail. For conditions not shown, consult BASF Wall Systems for review of specific detail.

■ - BASF
We create chemistry

BRICK*

SENERSHIELD-R/SENERSHIELD-RS/
SENERSHIELD-VB

SENERGY ADHESIVE/BASE COAT
APPLIED TO EPS INSULATION BOARD

APPROVED EPS INSULATION BOARD

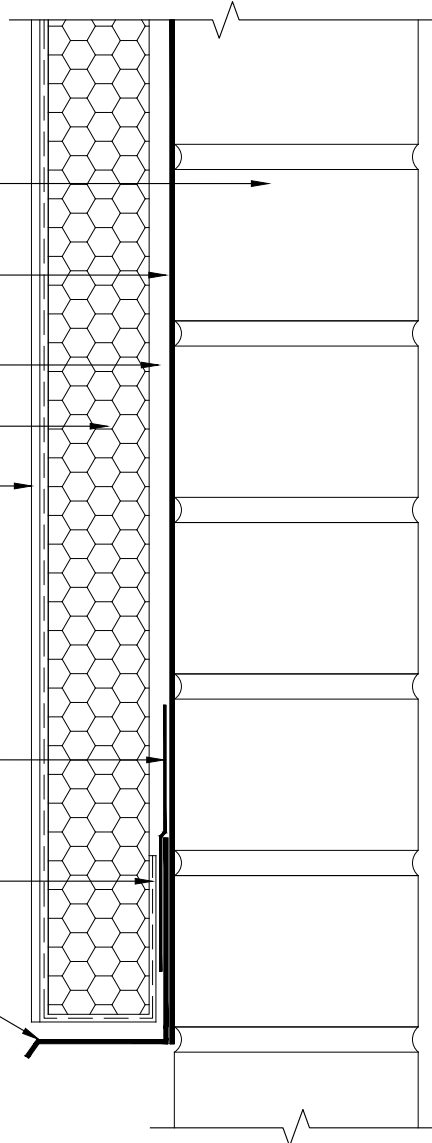
SENERGY LAMINA:
SENERGY BASE COAT
SENERGY REINFORCING MESH
SENERGY FINISH COAT

MAXFLASH, SHEATHING FABRIC
EMBEDDED IN SENERSHIELD-R;-RS;-VB,
OR WS FLASH W/ FLASHING PRIMER

WRAP SENERGY BASE COAT AND
SENERGY REINFORCING MESH

FLASHING*

*BY OTHERS



REV 180205

TYPICAL APPLICATION OVER BRICK

SENERGY CHanneled ADHESIVE CI DESIGN

SCALE: NTS

04

Structure, substrates, flashing, and other items which are not part of the BASF Senergy *Channeled Adhesive CI Design* system are the responsibility of others. This detail is subject to change without notice. BASF Corporation - Wall Systems (herein after BASF Wall Systems) accepts no liability for the end use of this detail. For conditions not shown, consult BASF Wall Systems for review of specific detail.

BASF
We create chemistry

FRAMING*

ACCEPTABLE SHEATHING*

SENERSHIELD-R/SENERSHIELD-RS/
SENERSHIELD-VB

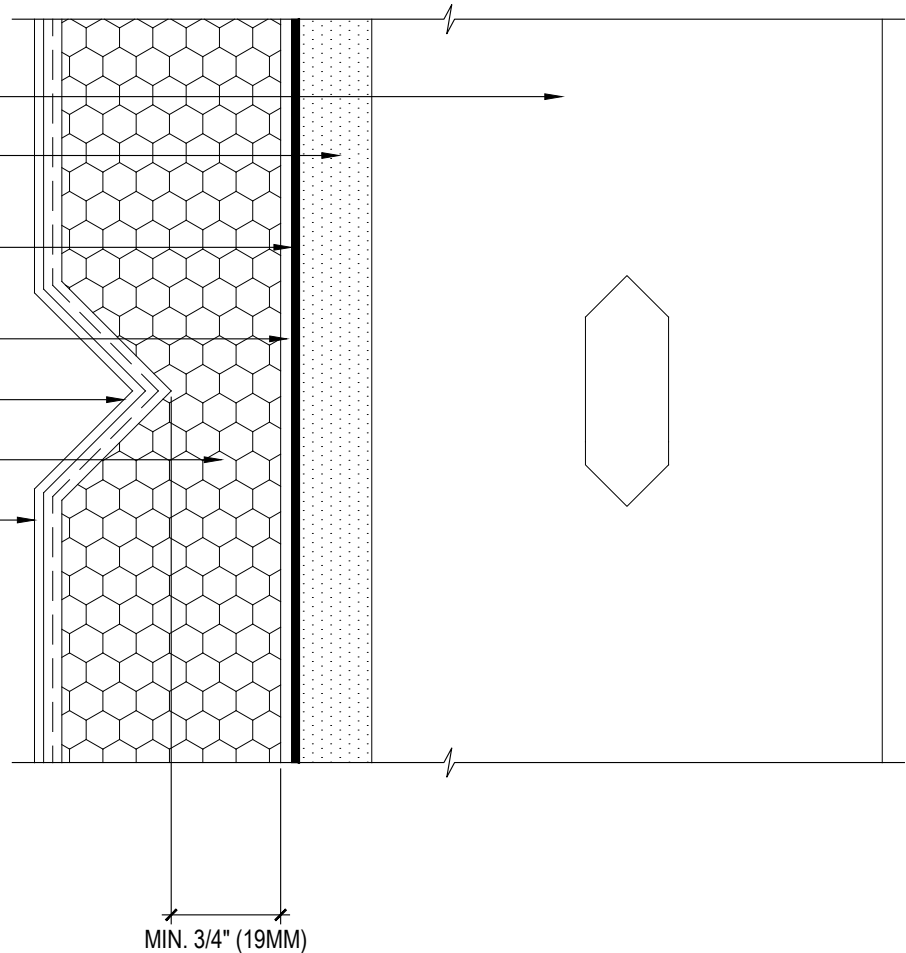
SENERGY ADHESIVE/BASE COAT
APPLIED TO EPS INSULATION BOARD

AESTHETIC REVEAL

APPROVED EPS INSULATION BOARD

SENERGY LAMINA:
SENERGY BASE COAT
SENERGY REINFORCING MESH
SENERGY FINISH COAT

*BY OTHERS



REV 180205

TYPICAL AESTHETIC REVEAL

SENERGY CHanneled ADHESIVE CI DESIGN

SCALE: NTS

05

Structure, substrates, flashing, and other items which are not part of the BASF Senergy *Channeled Adhesive CI Design* system are the responsibility of others. This detail is subject to change without notice. BASF Corporation - Wall Systems (herein after BASF Wall Systems) accepts no liability for the end use of this detail. For conditions not shown, consult BASF Wall Systems for review of specific detail.

■ - BASF
We create chemistry

FRAMING*

ACCEPTABLE SHEATHING*

SENERSHIELD-R/SENERSHIELD-RS/
SENERSHIELD-VB

SENERGY ADHESIVE/ BASE COAT

APPROVED EPS INSULATION BOARD

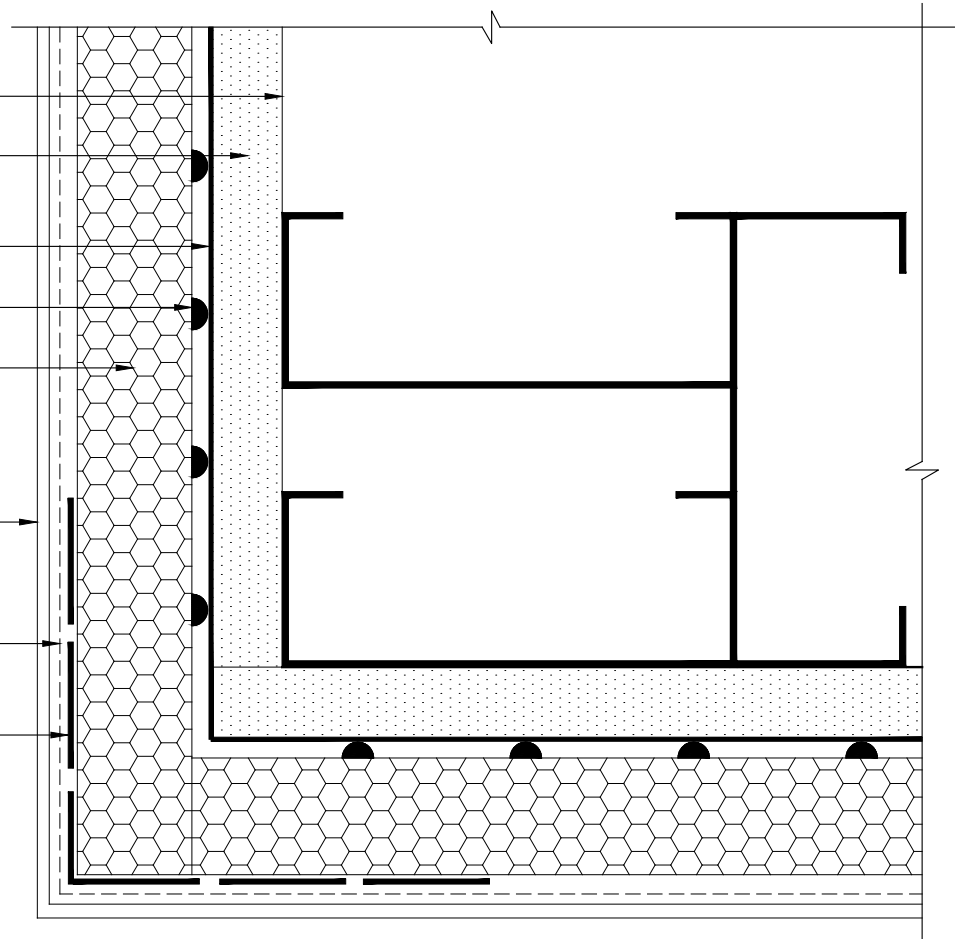
SENERGY FINISH COAT

FLEXGUARD 4, INTERMEDIATE 6 OR
INTERMEDIATE 12 REINFORCING MESH
EMBEDDED IN SENERGY BASE COAT

CORNER MESH EMBEDDED IN
SENERGY BASE COAT

***BY OTHERS**

**NOTE: A CONTINUOUS OVERLAY OF
FLEXGUARD 4, INTERMEDIATE 6, OR
INTERMEDIATE 12 IS REQUIRED OVER
CORNER MESH**



REV 180702

TYPICAL CORNER MESH APPLICATION

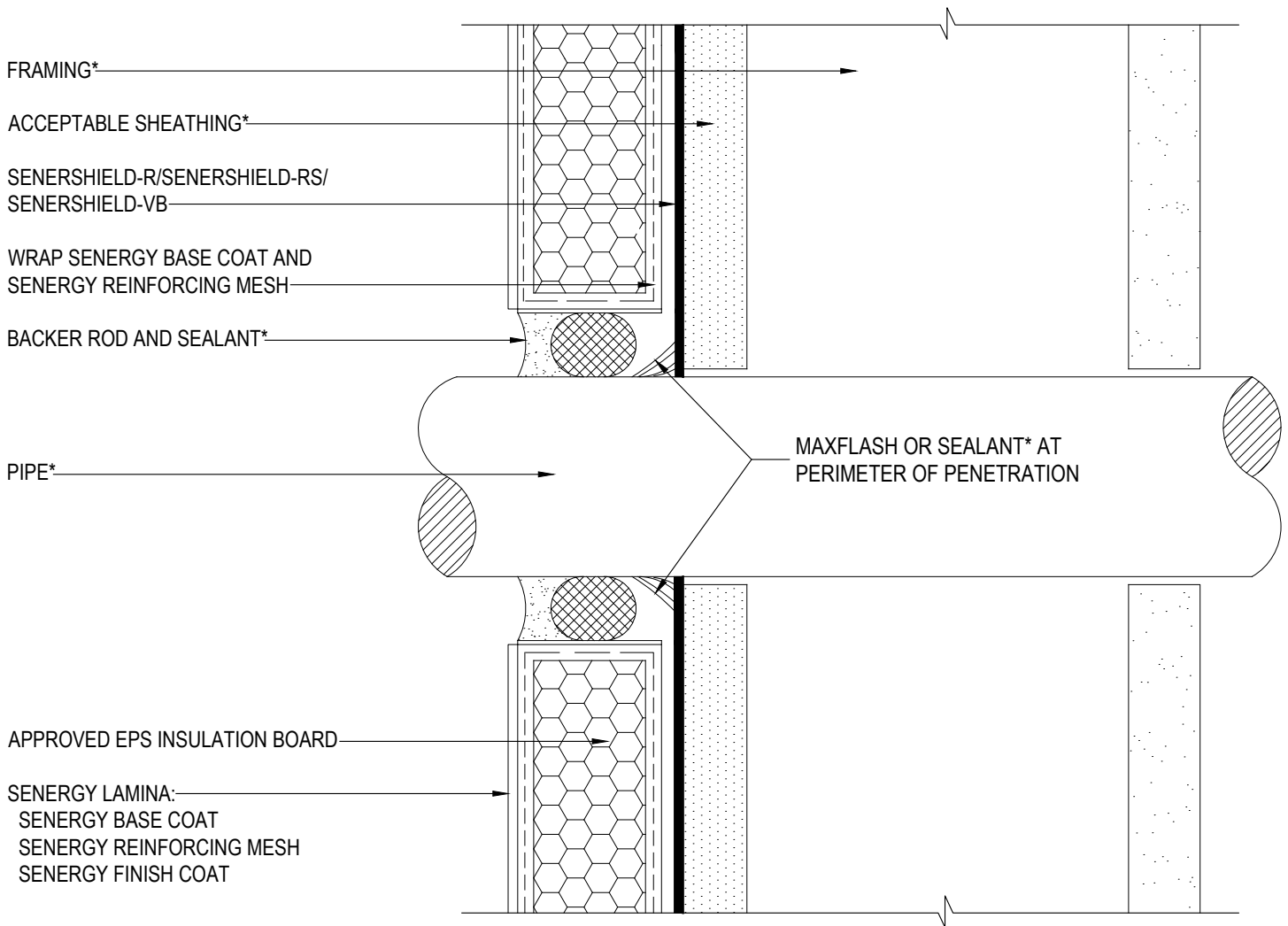
SENERGY CHanneLED ADHESIVE CI DESIGN

SCALE: NTS

06

Structure, substrates, flashing, and other items which are not part of the BASF Senergy *Channeled Adhesive CI Design* system are the responsibility of others. This detail is subject to change without notice. BASF Corporation - Wall Systems (herein after BASF Wall Systems) accepts no liability for the end use of this detail. For conditions not shown, consult BASF Wall Systems for review of specific detail.

■ - BASF
We create chemistry



*BY OTHERS

REV 180205

TYPICAL PIPE PENETRATION SENERGY CHanneLED ADHESIVE CI DESIGN

SCALE: NTS
07

Structure, substrates, flashing, and other items which are not part of the BASF SENERGY *Channeled Adhesive CI Design* system are the responsibility of others. This detail is subject to change without notice. BASF Corporation - Wall Systems (herein after BASF Wall Systems) accepts no liability for the end use of this detail. For conditions not shown, consult BASF Wall Systems for review of specific detail.



SENERSHIELD-R/SENERSHIELD-RS/
SENERSHIELD-VB

ACCEPTABLE SHEATHING*

SET FLANGE IN SEALANT
OR PROVIDE GASKET*

WRAP SENERGY BASE COAT AND
SENERGY REINFORCING MESH

BACKER ROD AND SEALANT*

LIGHT FIXTURE*

FRAMING*

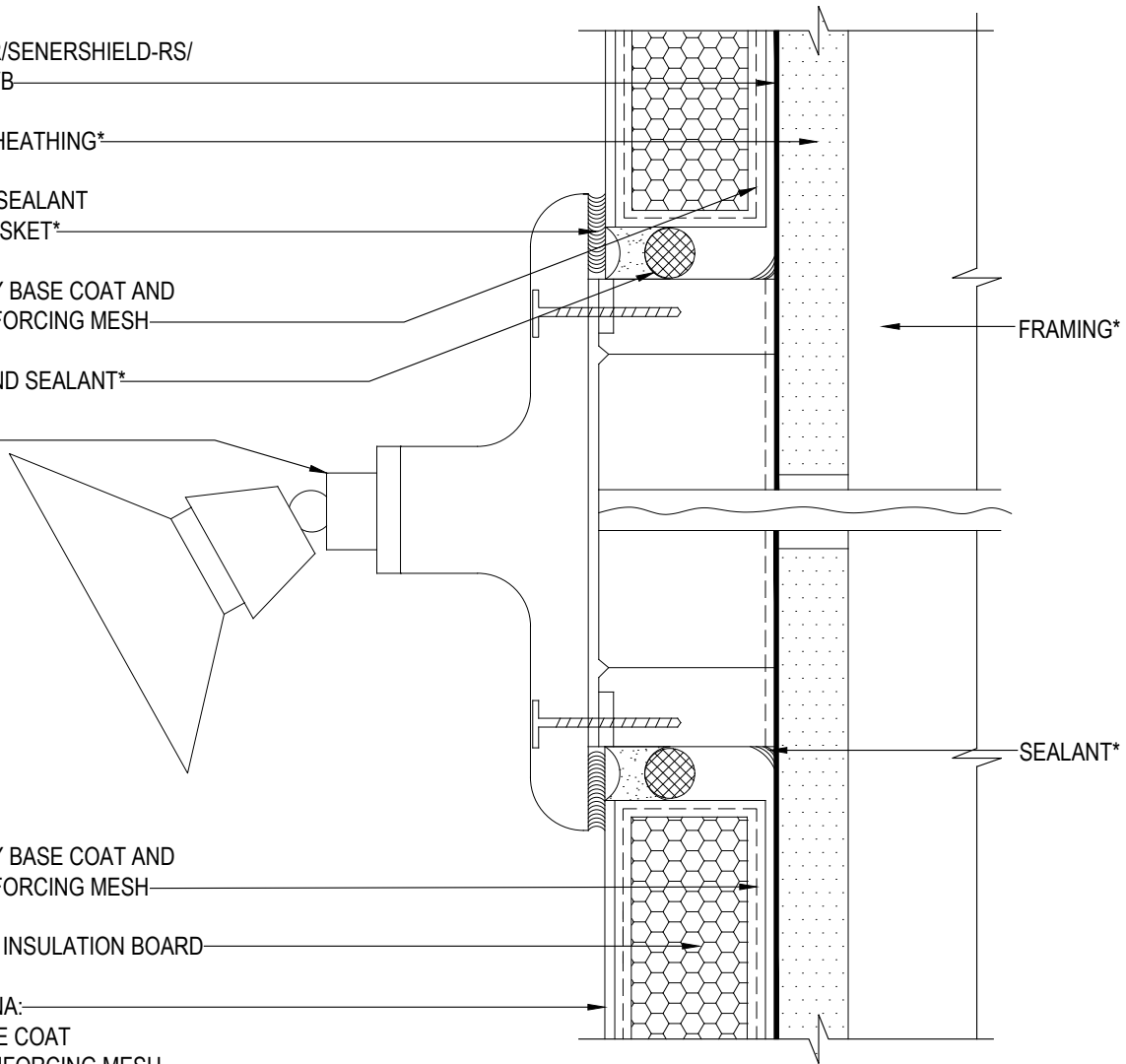
SEALANT*

WRAP SENERGY BASE COAT AND
SENERGY REINFORCING MESH

APPROVED EPS INSULATION BOARD

SENERGY LAMINA:
SENERGY BASE COAT
SENERGY REINFORCING MESH
SENERGY FINISH COAT

*BY OTHERS



REV 180702

TYPICAL LIGHT FIXTURE SENERGY CHanneLED ADHESIVE CI DESIGN

SCALE: NTS

08

Structure, substrates, flashing, and other items which are not part of the BASF Senergy *Channeled Adhesive CI Design* system are the responsibility of others. This detail is subject to change without notice. BASF Corporation - Wall Systems (herein after BASF Wall Systems) accepts no liability for the end use of this detail. For conditions not shown, consult BASF Wall Systems for review of specific detail.

■ - BASF
We create chemistry

FRAMING*

ACCEPTABLE SHEATHING*

SENERSHIELD-R/SENERSHIELD-RS/
SENERSHIELD-VB

WRAP SENERGY BASE COAT AND
SENERGY REINFORCING MESH

WS FLASH W/ FLASHING PRIMER

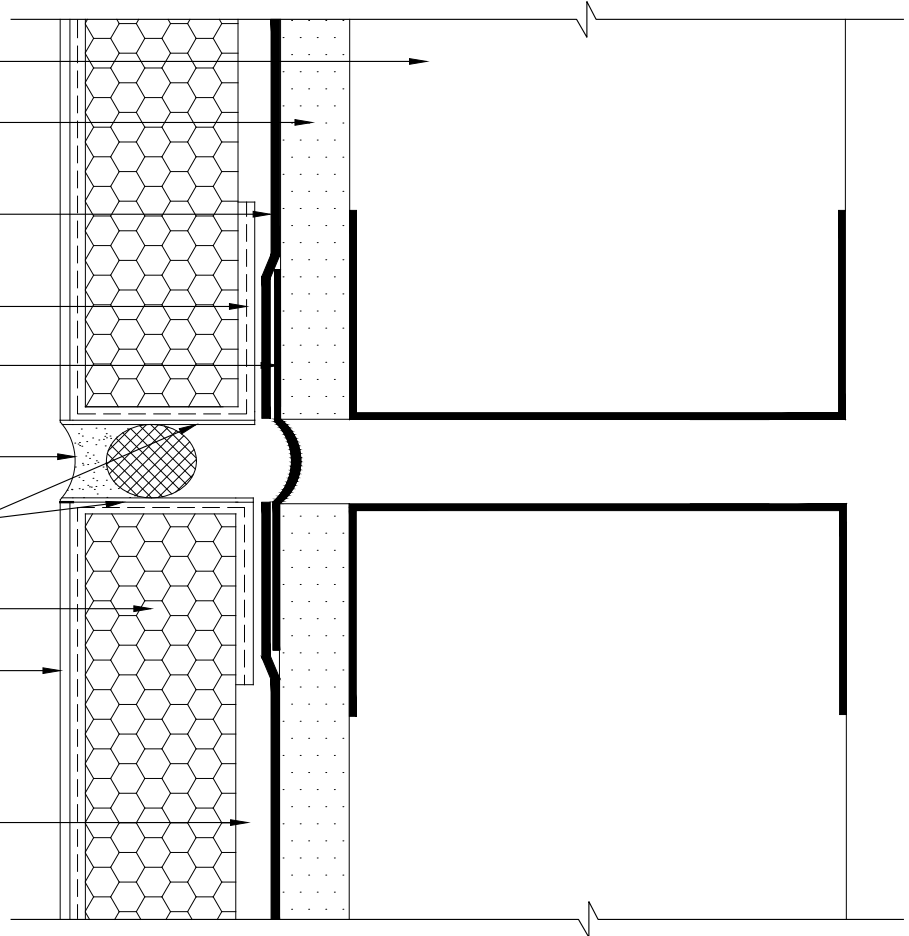
BACKER ROD AND SEALANT
(WIDTH PER DESIGN)*

BASF COLOR COAT
(OPTIONAL)

APPROVED EPS INSULATION BOARD

SENERGY LAMINA:
SENERGY BASE COAT
SENERGY REINFORCING MESH
SENERGY FINISH COAT

SENERGY ADHESIVE/BASE COAT
APPLIED TO EPS INSULATION BOARD



*BY OTHERS

REV 180205

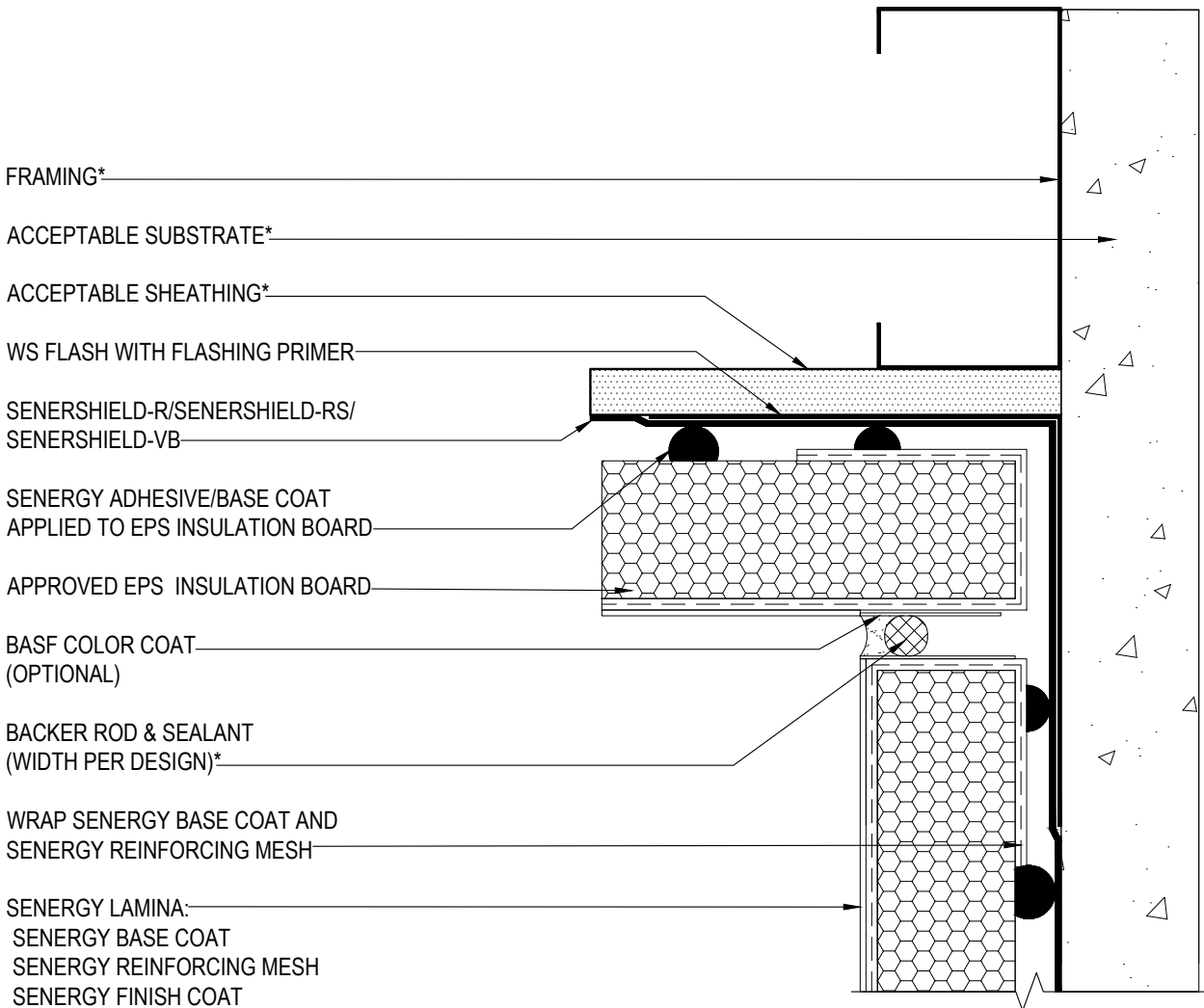
TYPICAL VERTICAL EXPANSION JOINT DETAIL SENERGY CHanneLED ADHESIVE CI DESIGN

SCALE: NTS

09

Structure, substrates, flashing, and other items which are not part of the BASF Senergy *Channeled Adhesive CI Design* system are the responsibility of others. This detail is subject to change without notice. BASF Corporation - Wall Systems (herein after BASF Wall Systems) accepts no liability for the end use of this detail. For conditions not shown, consult BASF Wall Systems for review of specific detail.

BASF
We create chemistry



*BY OTHERS

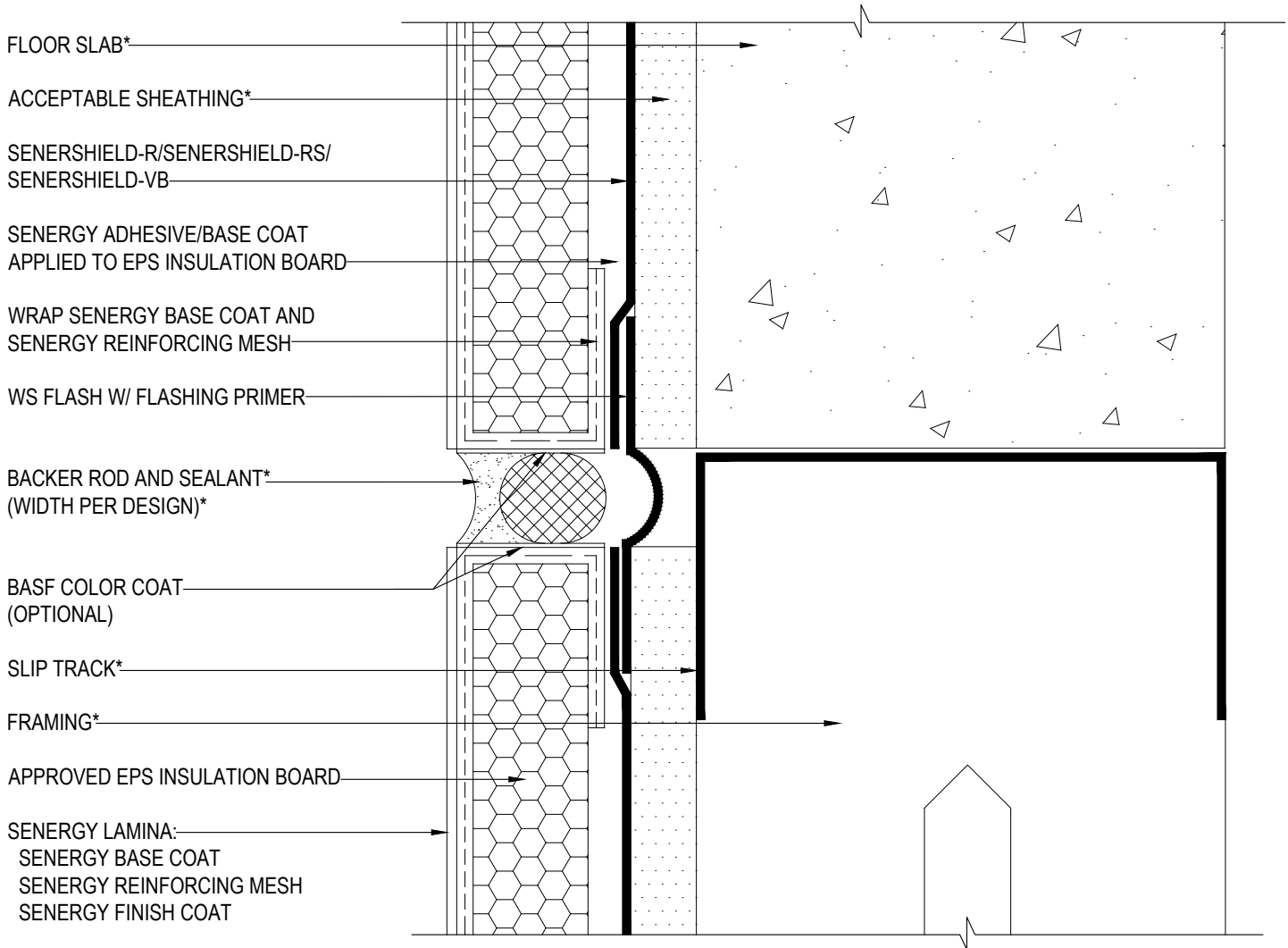
REV 180205

TYPICAL EXPANSION JOINT AT CHANGE IN SUBSTRATE SENERGY CHanneled ADHESIVE CI DESIGN

SCALE: NTS
10

Structure, substrates, flashing, and other items which are not part of the BASF Senergy *Channeled Adhesive CI Design* system are the responsibility of others. This detail is subject to change without notice. BASF Corporation - Wall Systems (herein after BASF Wall Systems) accepts no liability for the end use of this detail. For conditions not shown, consult BASF Wall Systems for review of specific detail.





*BY OTHERS

REV 180205

TYPICAL EXPANSION JOINT DETAIL AT FLOORLINE SENERGY CHanneLED ADHESIVE CI DESIGN

SCALE: NTS

11

Structure, substrates, flashing, and other items which are not part of the BASF Senergy *Channeled Adhesive CI Design* system are the responsibility of others. This detail is subject to change without notice. BASF Corporation - Wall Systems (herein after BASF Wall Systems) accepts no liability for the end use of this detail. For conditions not shown, consult BASF Wall Systems for review of specific detail.

BASF
We create chemistry

FLOOR SLAB*

SENERSHIELD-R/SENERSHIELD-RS/
SENERSHIELD-VB

MAXFLASH, SHEATHING FABRIC
EMBEDDED IN SENERSHIELD-R;-RS;-VB,
OR WS FLASH W/ FLASHING PRIMER

ACCEPTABLE SHEATHING*

WS FLASH WITH FLASHING PRIMER

FLASHING*

BACKER ROD & SEALANT
(WIDTH PER DESIGN)*

BASF COLOR COAT
(OPTIONAL)

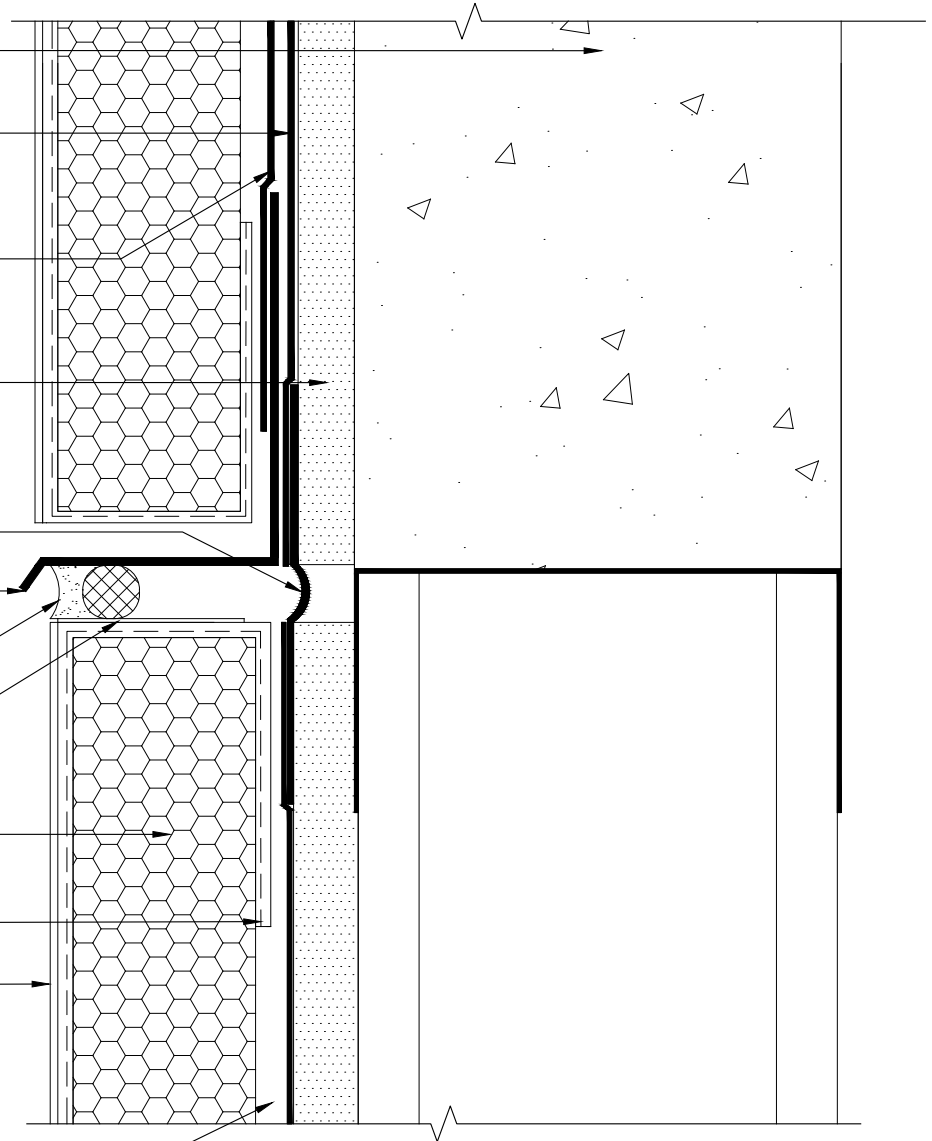
APPROVED EPS INSULATION BOARD

WRAP SENERGY BASE COAT AND
SENERGY REINFORCING MESH

SENERGY LAMINA:
SENERGY BASE COAT
SENERGY REINFORCING MESH
SENERGY FINISH COAT

SENERGY ADHESIVE/BASE COAT
APPLIED TO EPS INSULATION BOARD

*BY OTHERS



REV 180205

TYPICAL DRAINAGE AT FLOORLINE SENERGY CHanneled ADHESIVE CI DESIGN

SCALE: NTS

12

Structure, substrates, flashing, and other items which are not part of the BASF SENERGY *Channeled Adhesive CI Design* system are the responsibility of others. This detail is subject to change without notice. BASF Corporation - Wall Systems (herein after BASF Wall Systems) accepts no liability for the end use of this detail. For conditions not shown, consult BASF Wall Systems for review of specific detail.

■ - BASF

We create chemistry

FRAMING*

ACCEPTABLE SHEATHING*

SENERGY ADHESIVE/BASE COAT
APPLIED TO EPS INSULATION BOARD

SENERSHIELD-R/SENERSHIELD-RS/
SENERSHIELD-VB

MAXFLASH, SHEATHING FABRIC EMBEDDED
IN SENERSHIELD-R;-RS;-VB, OR WS FLASH
W/ FLASHING PRIMER

SENERGY LAMINA:
SENERGY BASE COAT
SENERGY REINFORCING MESH
SENERGY FINISH COAT

APPROVED EPS INSULATION BOARD

FLASHING*

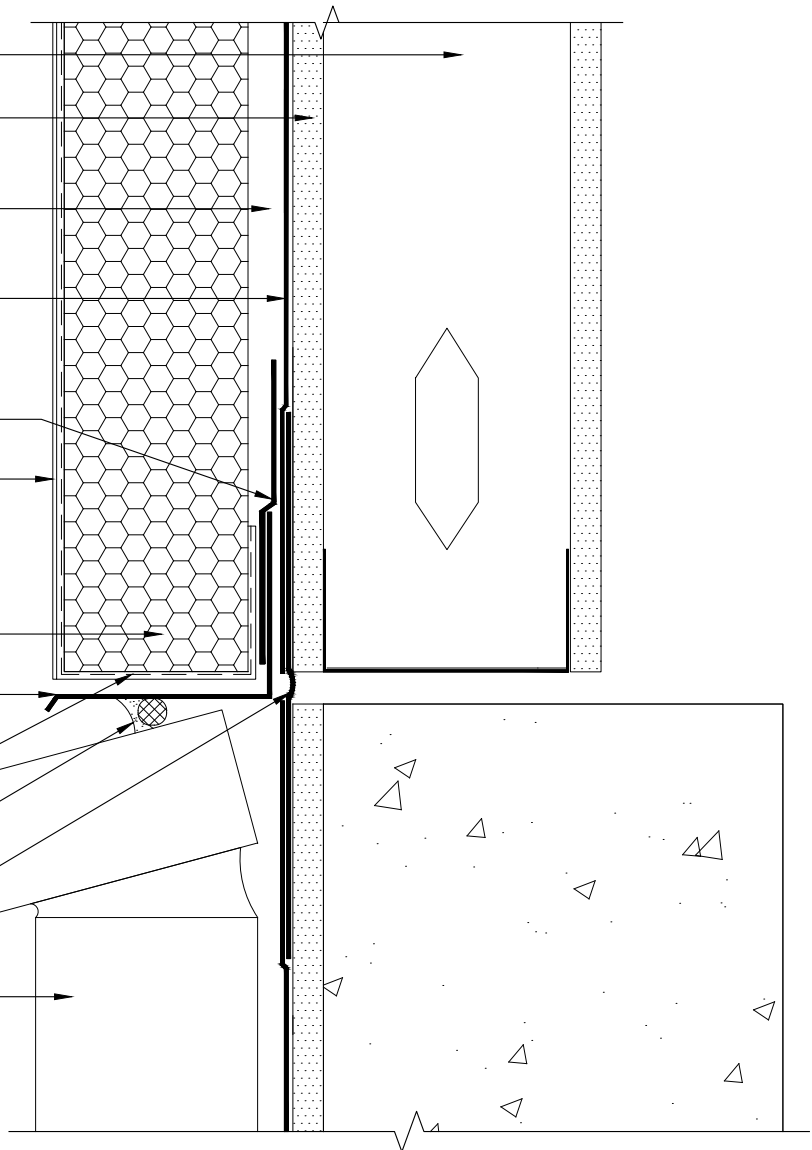
WRAP SENERGY BASE COAT AND
SENERGY REINFORCING MESH

BACKER ROD & SEALANT*
(WIDTH PER DESIGN)*

WS FLASH WITH FLASHING PRIMER

BRICK*

*BY OTHERS



REV 180205

TYPICAL ABUTMENT TO BRICK WITH DRAINAGE AT FLOORLINE SENERGY CHanneLED ADHESIVE CI DESIGN

SCALE: NTS

13

Structure, substrates, flashing, and other items which are not part of the BASF Senergy *Channeled Adhesive CI Design* system are the responsibility of others. This detail is subject to change without notice. BASF Corporation - Wall Systems (herein after BASF Wall Systems) accepts no liability for the end use of this detail. For conditions not shown, consult BASF Wall Systems for review of specific detail.

BASF
We create chemistry

FRAMING*

ACCEPTABLE SHEATHING*

SENERGY ADHESIVE/BASE COAT
APPLIED TO EPS INSULATION BOARD

SENERGY LAMINA:
SENERGY BASE COAT
SENERGY REINFORCING MESH
SENERGY FINISH COAT

SENERSHIELD-R/SENERSHIELD-RS/
SENERSHIELD-VB

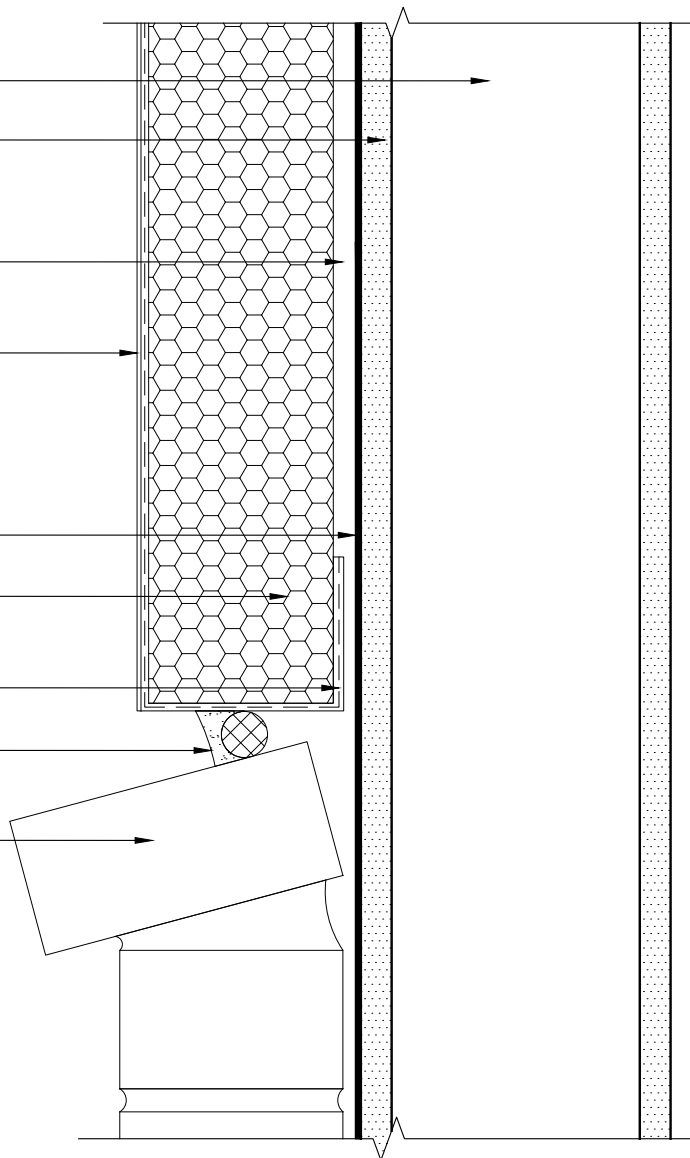
APPROVED EPS INSULATION BOARD

WRAP SENERGY BASE COAT AND
SENERGY REINFORCING MESH

BACKER ROD & SEALANT
(WIDTH PER DESIGN)*

BRICK*

*BY OTHERS



REV 180205

TYPICAL CHANNELED ADHESIVE CI DESIGN ABUTMENT TO BRICK SENERGY CHANNELED ADHESIVE CI DESIGN

SCALE: NTS

14

Structure, substrates, flashing, and other items which are not part of the BASF SENERGY *Channeled Adhesive CI Design* system are the responsibility of others. This detail is subject to change without notice. BASF Corporation - Wall Systems (herein after BASF Wall Systems) accepts no liability for the end use of this detail. For conditions not shown, consult BASF Wall Systems for review of specific detail.

BASF
We create chemistry

FRAMING*

ACCEPTABLE SHEATHING*

SENERGY ADHESIVE/BASE COAT
APPLIED TO EPS INSULATION BOARD

SENERSHIELD-R/SENERSHIELD-RS /
SENERSHIELD-VB

MAXFLASH, SHEATHING FABRIC
EMBEDDED IN SENERSHIELD-R; -RS; -VB,
OR WS FLASH W/ FLASHING PRIMER

APPROVED EPS INSULATION BOARD

SENERGY LAMINA:
SENERGY BASE COAT
SENERGY REINFORCING MESH
SENERGY FINISH COAT

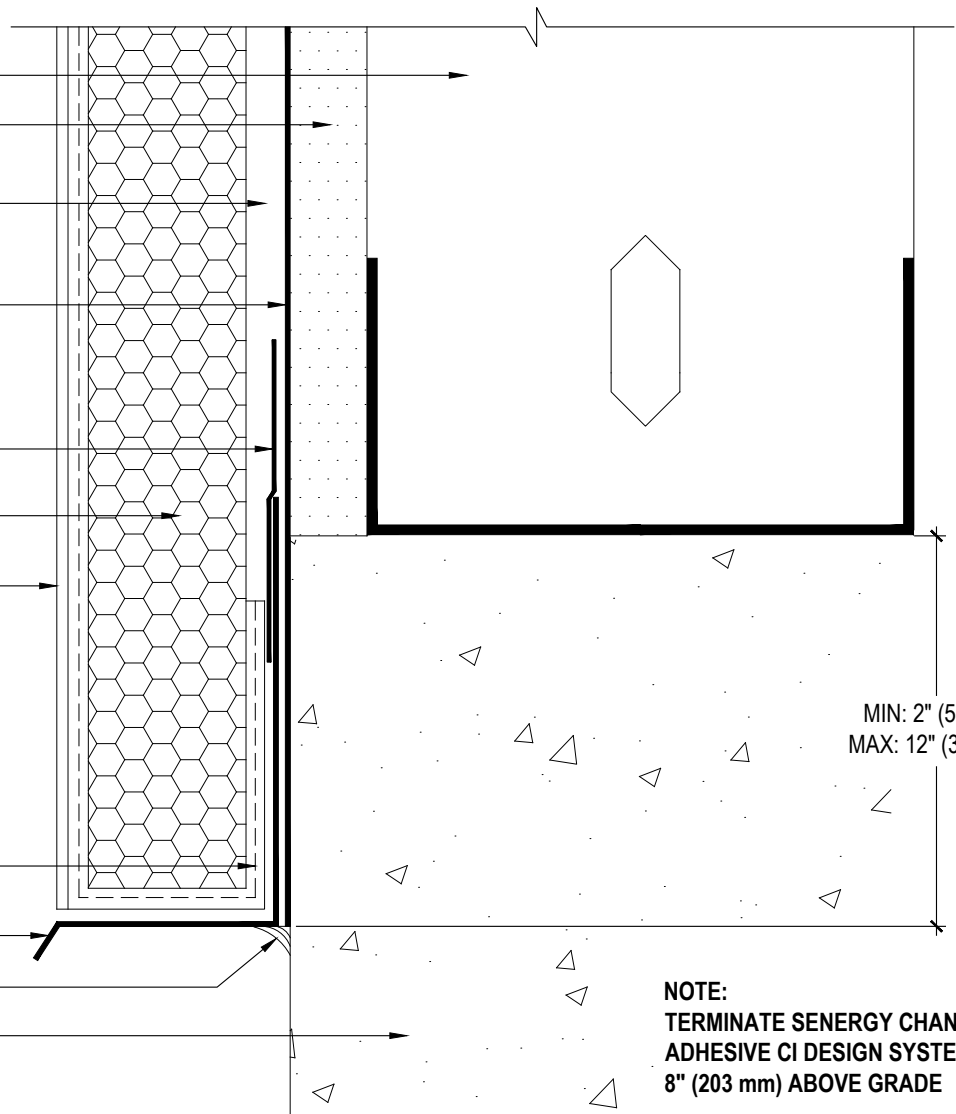
WRAP BASE COAT AND
SENERGY REINFORCING MESH

FLASHING*

SEALANT*

FOUNDATION*

*BY OTHERS



MIN: 2" (50mm)
MAX: 12" (305mm)

NOTE:
TERMINATE SENERGY CHanneled
ADHESIVE CI DESIGN SYSTEM MIN.
8" (203 mm) ABOVE GRADE

REV 180205

TYPICAL TERMINATION AT FOUNDATION SENERGY CHanneled ADHESIVE CI DESIGN

SCALE: NTS

15

Structure, substrates, flashing, and other items which are not part of the BASF Senergy *Channeled Adhesive CI Design* system are the responsibility of others. This detail is subject to change without notice. BASF Corporation - Wall Systems (herein after BASF Wall Systems) accepts no liability for the end use of this detail. For conditions not shown, consult BASF Wall Systems for review of specific detail.

BASF
We create chemistry

FRAMING*

SENERGY ADHESIVE/BASE COAT
APPLIED TO EPS INSULATION BOARD

ACCEPTABLE SHEATHING*

SENERSHIELD-R/SENERSHIELD-RS/
SENERSHIELD-VB

APPROVED EPS INSULATION BOARD

SENERGY LAMINA:
SENERGY BASE COAT
SENERGY REINFORCING MESH
SENERGY FINISH COAT

WS FLASH W/ FLASHING PRIMER

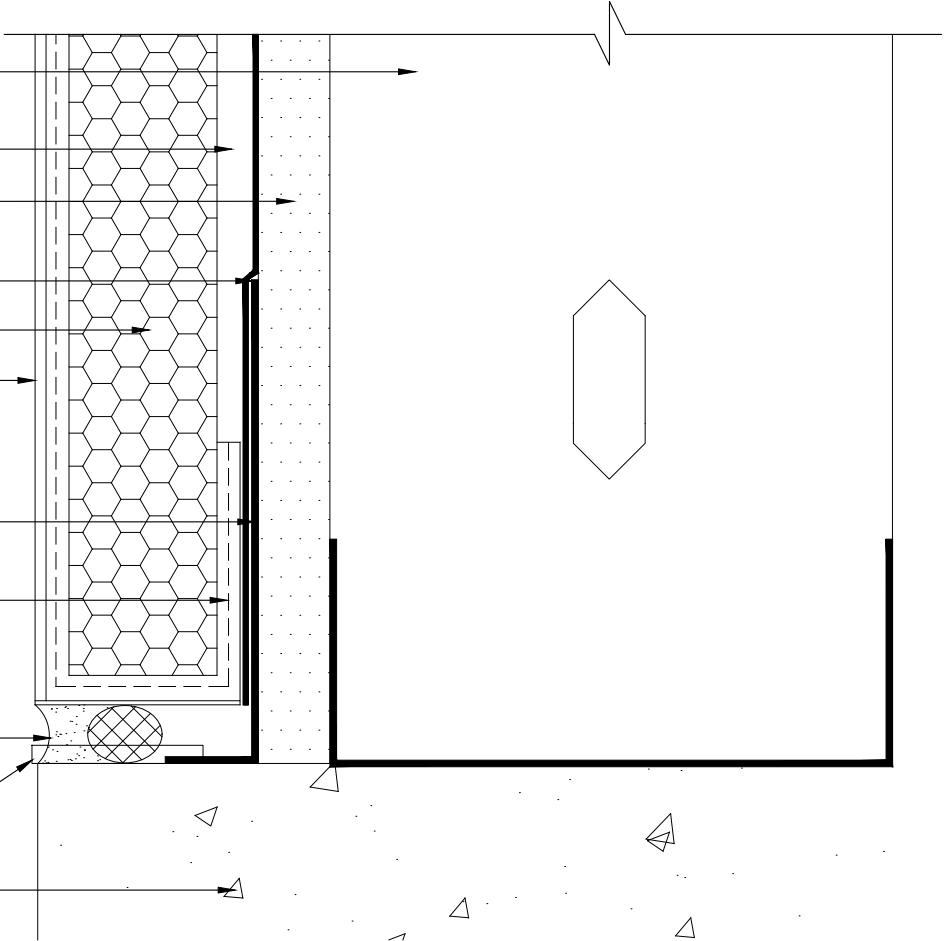
WRAP BASE COAT AND
SENERGY REINFORCING MESH

BACKER ROD AND SEALANT
(WIDTH PER DESIGN)*

WEEP TUBE*

FOUNDATION*

*BY OTHERS



REV 180205

TYPICAL TERMINATION AT FOUNDATION (FLUSH) SENERGY CHanneLED ADHESIVE CI DESIGN

SCALE: NTS

16

Structure, substrates, flashing, and other items which are not part of the BASF Senergy *Channeled Adhesive CI Design* system are the responsibility of others. This detail is subject to change without notice. BASF Corporation - Wall Systems (herein after BASF Wall Systems) accepts no liability for the end use of this detail. For conditions not shown, consult BASF Wall Systems for review of specific detail.

BASF
We create chemistry

FRAMING*

ACCEPTABLE SHEATHING*

SENERSHIELD-R/SENERSHIELD-RS/
SENERSHIELD-VB

SENERGY ADHESIVE/BASE COAT
APPLIED TO EPS INSULATION BOARD

APPROVED EPS INSULATION BOARD

SENERGY LAMINA:
SENERGY BASE COAT
SENERGY REINFORCING MESH
SENERGY FINISH COAT

MAXFLASH, SHEATHING FABRIC
EMBEDDED IN SENERSHIELD-R; -RS; -VB,
OR WS FLASH W/ FLASHING PRIMER

WRAP SENERGY BASE COAT AND
SENERGY REINFORCING MESH

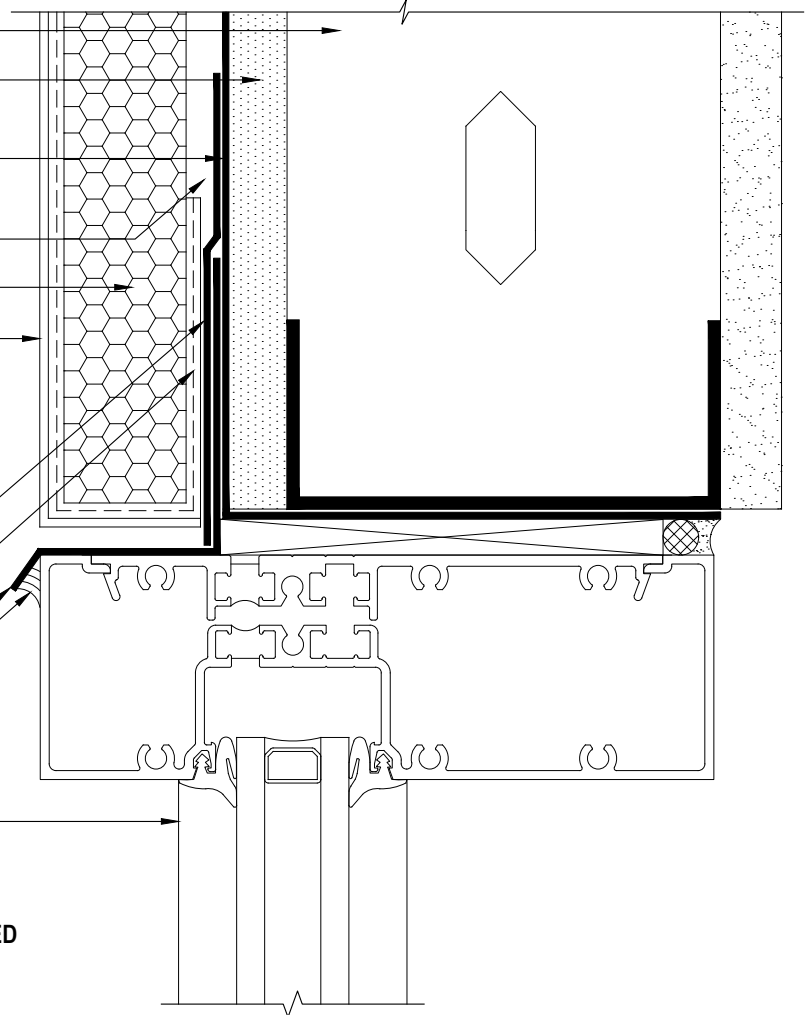
FLASHING*

SEALANT*

WINDOW*

*BY OTHERS

**NOTE: WRAP MAXFLASH, SHEATHING FABRIC EMBEDDED
IN SENERSHIELD-R; -RS; -VB OR WS FLASH W/
FLASHING PRIMER INTO ROUGH OPENING ON
HEAD IF ALSO INTENDED TO BE AN AIR BARRIER.**



REV 180702

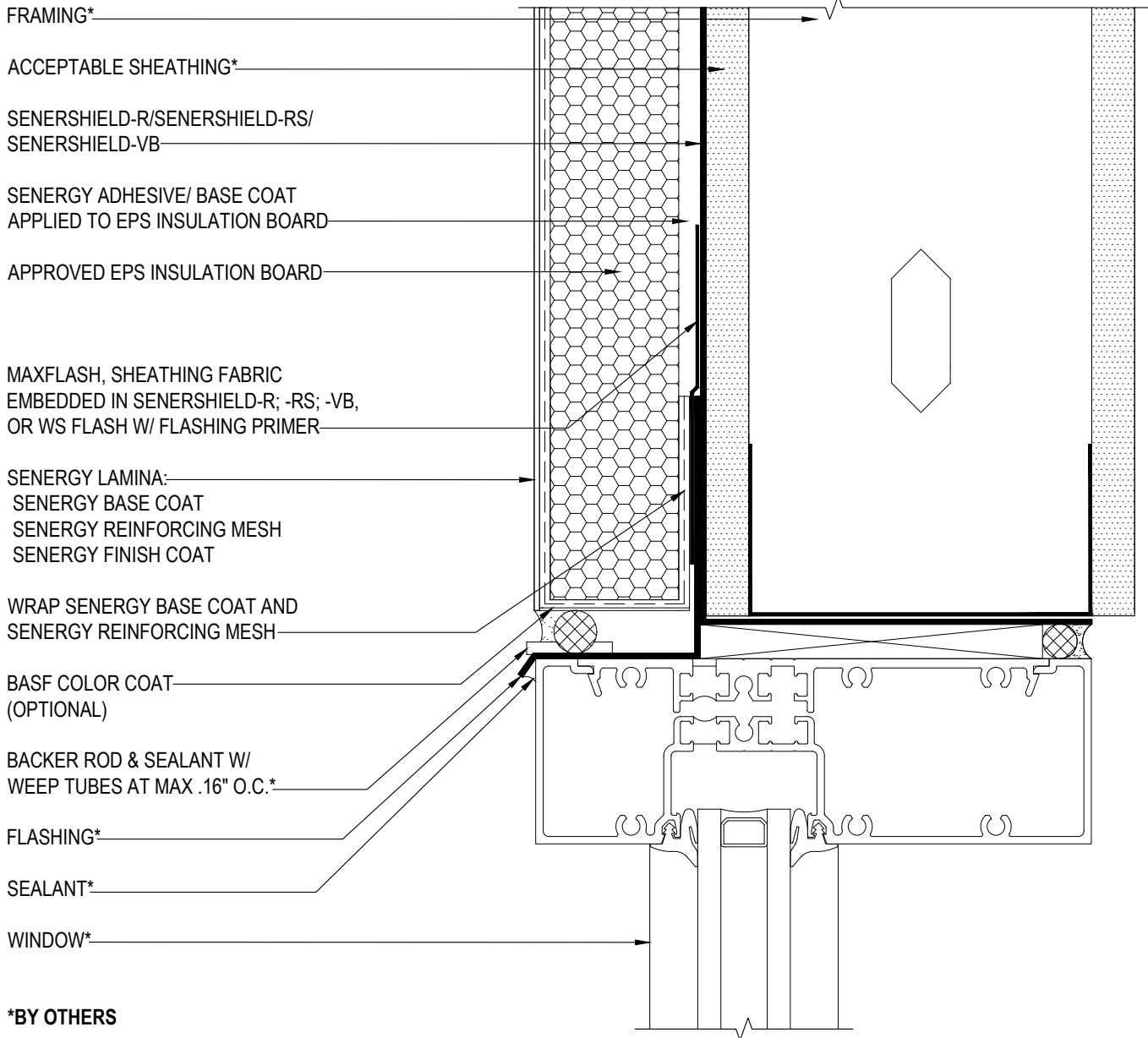
TYPICAL WINDOW HEAD (FLUSH) SENERGY CHanneled ADHESIVE CI DESIGN

SCALE: NTS

17

Structure, substrates, flashing, and other items which are not part of the BASF Senergy *Channeled Adhesive CI Design* system are the responsibility of others. This detail is subject to change without notice. BASF Corporation - Wall Systems (herein after BASF Wall Systems) accepts no liability for the end use of this detail. For conditions not shown, consult BASF Wall Systems for review of specific detail.

BASF
We create chemistry



NOTE: WRAP MAXFLASH, SHEATHING FABRIC EMBEDDED IN SENERSHIELD-R; -RS; -VB OR WS FLASH W/ FLASHING PRIMER INTO ROUGH OPENING ON HEAD IF ALSO INTENDED TO BE AN AIR BARRIER.

REV 180702

TYPICAL WINDOW HEAD (FLUSH) WITH WEEP TUBES SENERGY CHANNELED ADHESIVE CI DESIGN

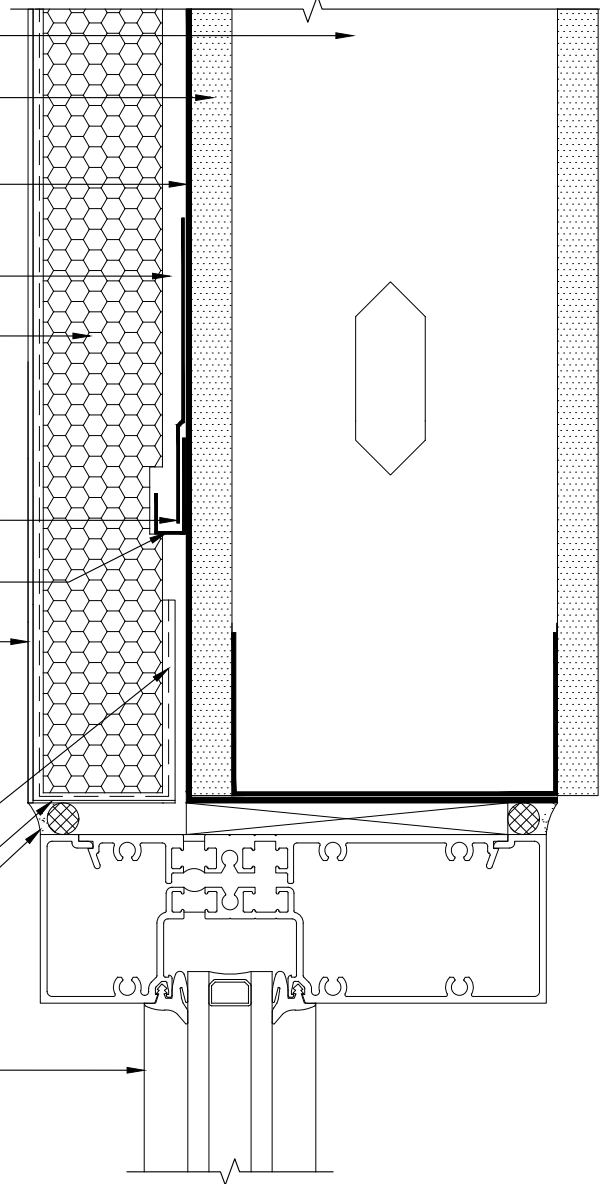
SCALE: NTS

18

Structure, substrates, flashing, and other items which are not part of the BASF Senergy Channeled Adhesive CI Design system are the responsibility of others. This detail is subject to change without notice. BASF Corporation - Wall Systems (herein after BASF Wall Systems) accepts no liability for the end use of this detail. For conditions not shown, consult BASF Wall Systems for review of specific detail.

BASF
We create chemistry

- FRAMING*
- ACCEPTABLE SHEATHING*
- SENERSHIELD-R/SENERSHIELD-RS/
SENERSHIELD-VB
- SENERGY ADHESIVE/ BASE COAT
APPLIED TO EPS INSULATION BOARD
- APPROVED EPS INSULATION BOARD
- MAXFLASH, SHEATHING FABRIC
EMBEDDED IN SENERSHIELD-R; -RS; -VB,
OR WS FLASH W/ FLASHING PRIMER
- DIVERTER TRACK*
- SENERGY LAMINA:
SENERGY BASE COAT
SENERGY REINFORCING MESH
SENERGY FINISH COAT
- WRAP SENERGY BASE COAT AND
SENERGY REINFORCING MESH
- BASF COLOR COAT
(OPTIONAL)
- BACKER ROD & SEALANT
(WIDTH PER DESIGN)*
- WINDOW*



*BY OTHERS

NOTE: WRAP MAXFLASH, SHEATHING FABRIC EMBEDDED IN SENERSHIELD-R; -RS; -VB OR WS FLASH W/ FLASHING PRIMER INTO ROUGH OPENING ON HEAD IF ALSO INTENDED TO BE AN AIR BARRIER.

REV 180702

TYPICAL WINDOW HEAD (FLUSH) WITH DIVERTER TRACK SENERGY CHanneled ADHESIVE CI DESIGN

SCALE: NTS

19

Structure, substrates, flashing, and other items which are not part of the BASF Senergy *Channeled Adhesive CI Design* system are the responsibility of others. This detail is subject to change without notice. BASF Corporation - Wall Systems (herein after BASF Wall Systems) accepts no liability for the end use of this detail. For conditions not shown, consult BASF Wall Systems for review of specific detail.

■ - BASF

We create chemistry

FRAMING*

ACCEPTABLE SHEATHING*

SENERSHIELD-R/SENERSHIELD-VB/
SENERSHIELD-RS

SENERGY ADHESIVE/BASE COAT
APPLIED TO EPS INSULATION BOARD

MAXFLASH, SHEATHING FABRIC
EMBEDDED IN SENERSHIELD-R; -RS; -VB,
OR WS FLASH W/ FLASHING PRIMER

APPROVED EPS INSULATION BOARD

SENERGY LAMINA:
SENERGY BASE COAT
SENERGY REINFORCING MESH
SENERGY FINISH COAT

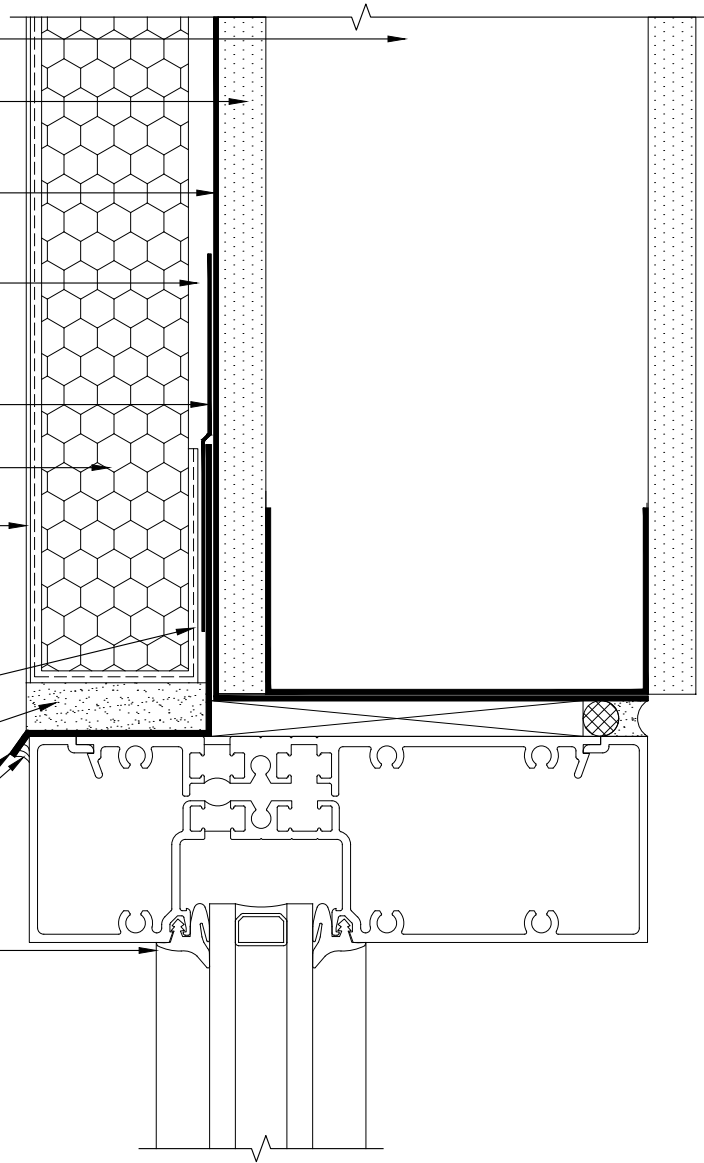
WRAP SENERGY BASE COAT AND
SENERGY REINFORCING MESH

ACCEPTABLE SEALANT
AS END DAM*

FLASHING*

SEALANT*

WINDOW*



*BY OTHERS

NOTE: WRAP MAXFLASH, SHEATHING FABRIC EMBEDDED
IN SENERSHIELD-R; -RS; -VB OR WS FLASH W/
FLASHING PRIMER INTO ROUGH OPENING ON
HEAD IF ALSO INTENDED TO BE AN AIR BARRIER.

REV 180702

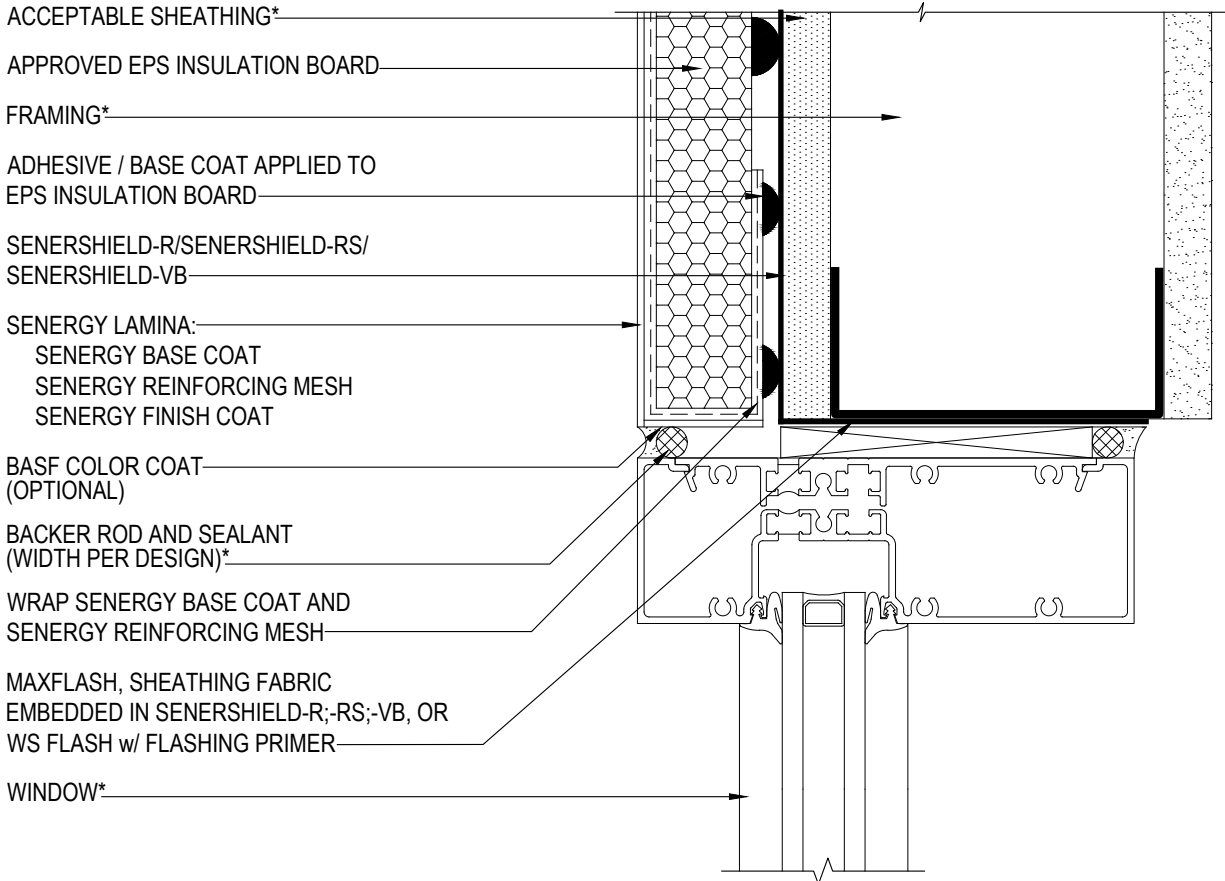
TYPICAL WINDOW HEAD FLASHING W/ SEALANT END DAM SENERGY CHanneled Adhesive CI Design

SCALE: NTS

20

Structure, substrates, flashing, and other items which are not part of the BASF Senergy *Channeled Adhesive CI Design* system are the responsibility of others. This detail is subject to change without notice. BASF Corporation - Wall Systems (herein after BASF Wall Systems) accepts no liability for the end use of this detail. For conditions not shown, consult BASF Wall Systems for review of specific detail.

BASF
We create chemistry



*BY OTHERS

REV 180702

TYPICAL WINDOW JAMB (FLUSH) SENERGY CHANNELED ADHESIVE CI DESIGN

SCALE: NTS

21

Structure, substrates, flashing, and other items which are not part of the BASF SENERGY Channeled Adhesive CI Design system are the responsibility of others. This detail is subject to change without notice. BASF Corporation - Wall Systems (herein after BASF Wall Systems) accepts no liability for the end use of this detail. For conditions not shown, consult BASF Wall Systems for review of specific detail.

BASF
We create chemistry

WINDOW*

BACKER ROD AND SEALANT
(WIDTH PER DESIGN)*

BASF COLOR COAT
(OPTIONAL)

SENERGY LAMINA:
SENERGY BASE COAT
SENERGY REINFORCING MESH
SENERGY FINISH COAT

WRAP SENERGY BASE COAT AND
SENERGY REINFORCING MESH

MAXFLASH, SHEATHING FABRIC
EMBEDDED IN SENERSHIELD-R;-RS;-VB,
OR WS FLASH 9 w/ FLASHING PRIMER

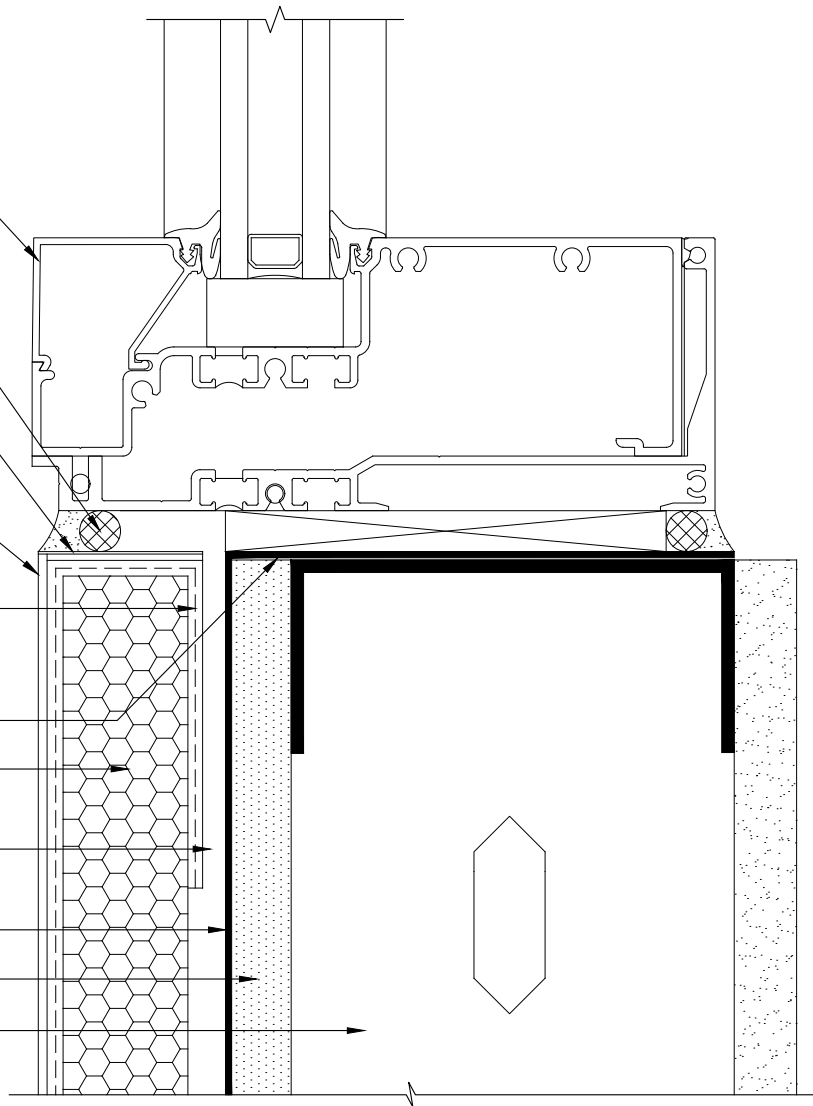
APPROVED EPS INSULATION BOARD

SENERGY ADHESIVE / BASE COAT
APPLIED TO EPS INSULATION BOARD

SENERSHIELD-R/SENERSHIELD-RS/
SENERSHIELD-VB

ACCEPTABLE SHEATHING*

FRAMING*



*BY OTHERS

REV 180205

TYPICAL WINDOW SILL DETAIL (FLUSH) SENERGY CHANNELED ADHESIVE CI DESIGN

SCALE: NTS

22

Structure, substrates, flashing, and other items which are not part of the BASF Senergy *Channeled Adhesive CI Design* system are the responsibility of others. This detail is subject to change without notice. BASF Corporation - Wall Systems (herein after BASF Wall Systems) accepts no liability for the end use of this detail. For conditions not shown, consult BASF Wall Systems for review of specific detail.

BASF
We create chemistry

SENERGY ADHESIVE / BASE COAT
APPLIED TO EPS INSULATION

FRAMING*

ACCEPTABLE SHEATHING*

SENERSHIELD-R/SENERSHIELD-RS/
SENERSHIELD-VB

APPROVED EPS INSULATION BOARD

WRAP SENERGY BASE COAT AND
SENERGY REINFORCING MESH

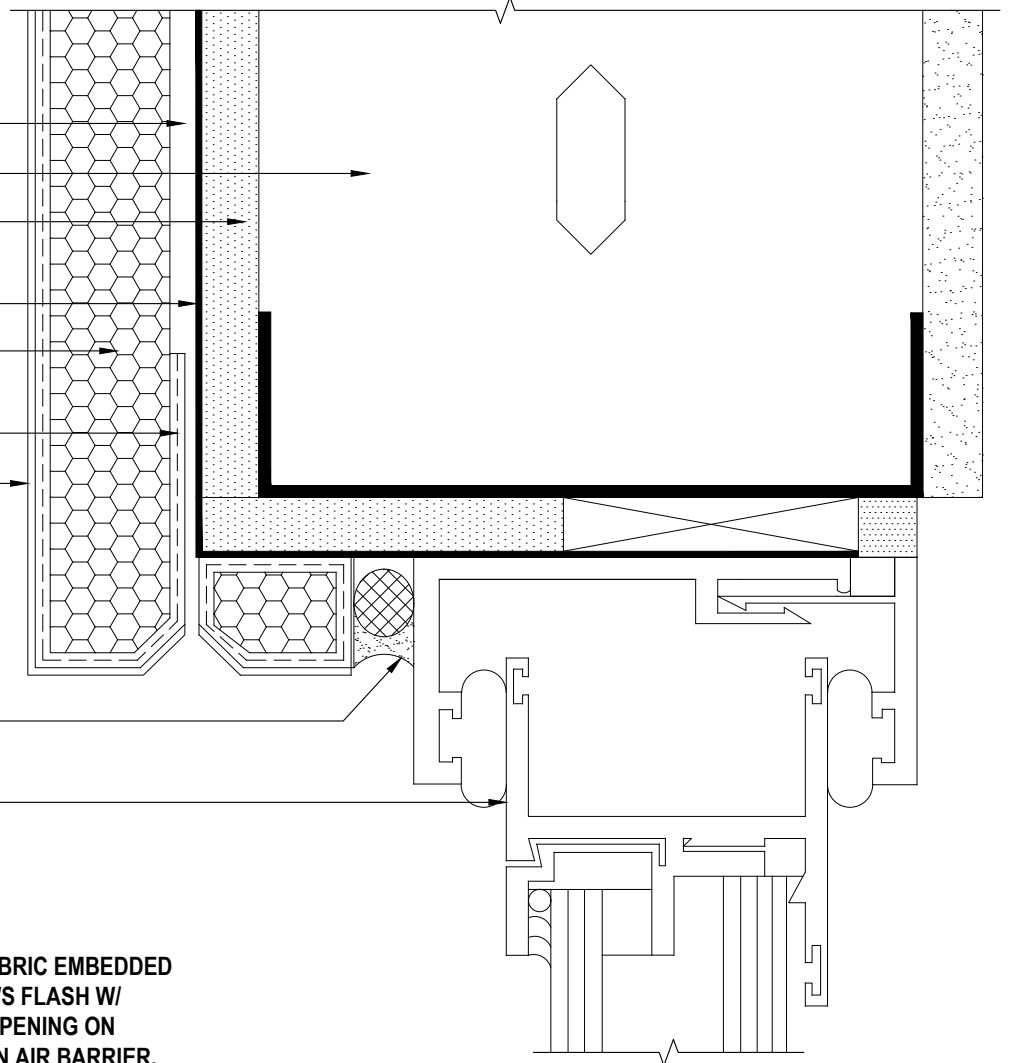
SENERGY LAMINA:
SENERGY BASE COAT
SENERGY REINFORCING MESH
SENERGY FINISH COAT

BACKER ROD AND SEALANT
(WIDTH PER DESIGN)*

WINDOW*

*BY OTHERS

**NOTE: WRAP MAXFLASH, SHEATHING FABRIC EMBEDDED
IN SENERSHIELD-R; -RS; -VB OR WS FLASH W/
FLASHING PRIMER INTO ROUGH OPENING ON
HEAD IF ALSO INTENDED TO BE AN AIR BARRIER.**



REV 180702

TYPICAL WINDOW HEAD (RECESSED) SENERGY CHanneLED ADHESIVE CI DESIGN

SCALE: NTS

23

Structure, substrates, flashing, and other items which are not part of the BASF Senergy *Channeled Adhesive CI Design* system are the responsibility of others. This detail is subject to change without notice. BASF Corporation - Wall Systems (herein after BASF Wall Systems) accepts no liability for the end use of this detail. For conditions not shown, consult BASF Wall Systems for review of specific detail.

BASF
We create chemistry

FRAMING*

ACCEPTABLE SHEATHING*

SENERSHIELD-R/SENERSHIELD-RS/
SENERSHIELD-VB

APPROVED EPS INSULATION BOARD

SENERGY ADHESIVE / BASE COAT
APPLIED TO EPS INSULATION BOARD

SENERGY LAMINA:
SENERGY BASE COAT
SENERGY REINFORCING MESH
SENERGY FINISH COAT

MAXFLASH, SHEATHING FABRIC
EMBEDDED IN SENERSHIELD-R;-RS;-VB,
OR WS FLASH w/ FLASHING PRIMER

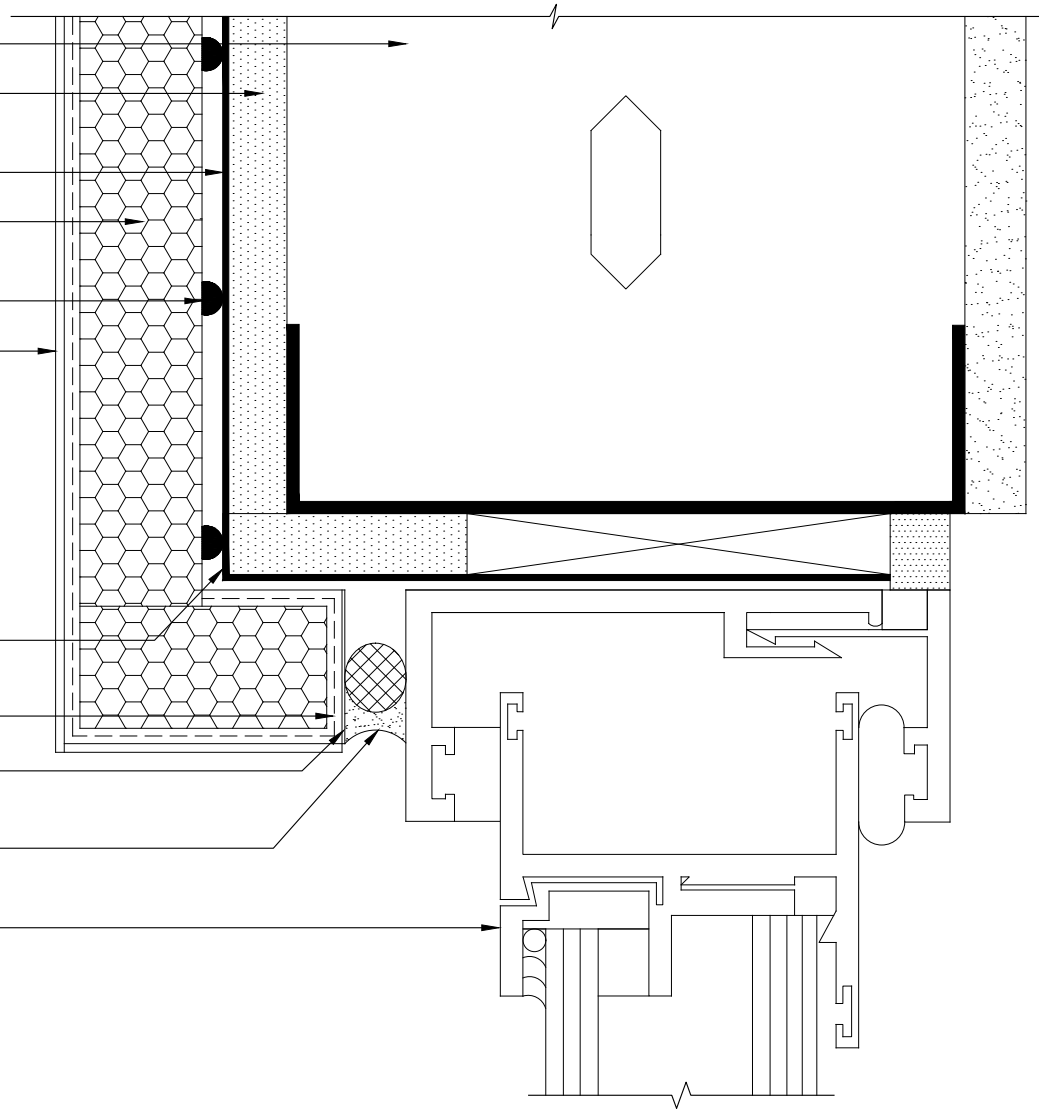
WRAP SENERGY BASE COAT AND
SENERGY REINFORCING MESH

BASF COLOR COAT
(OPTIONAL)

BACKER ROD AND SEALANT*
(WIDTH PER DESIGN)*

WINDOW*

*BY OTHERS



REV 180205

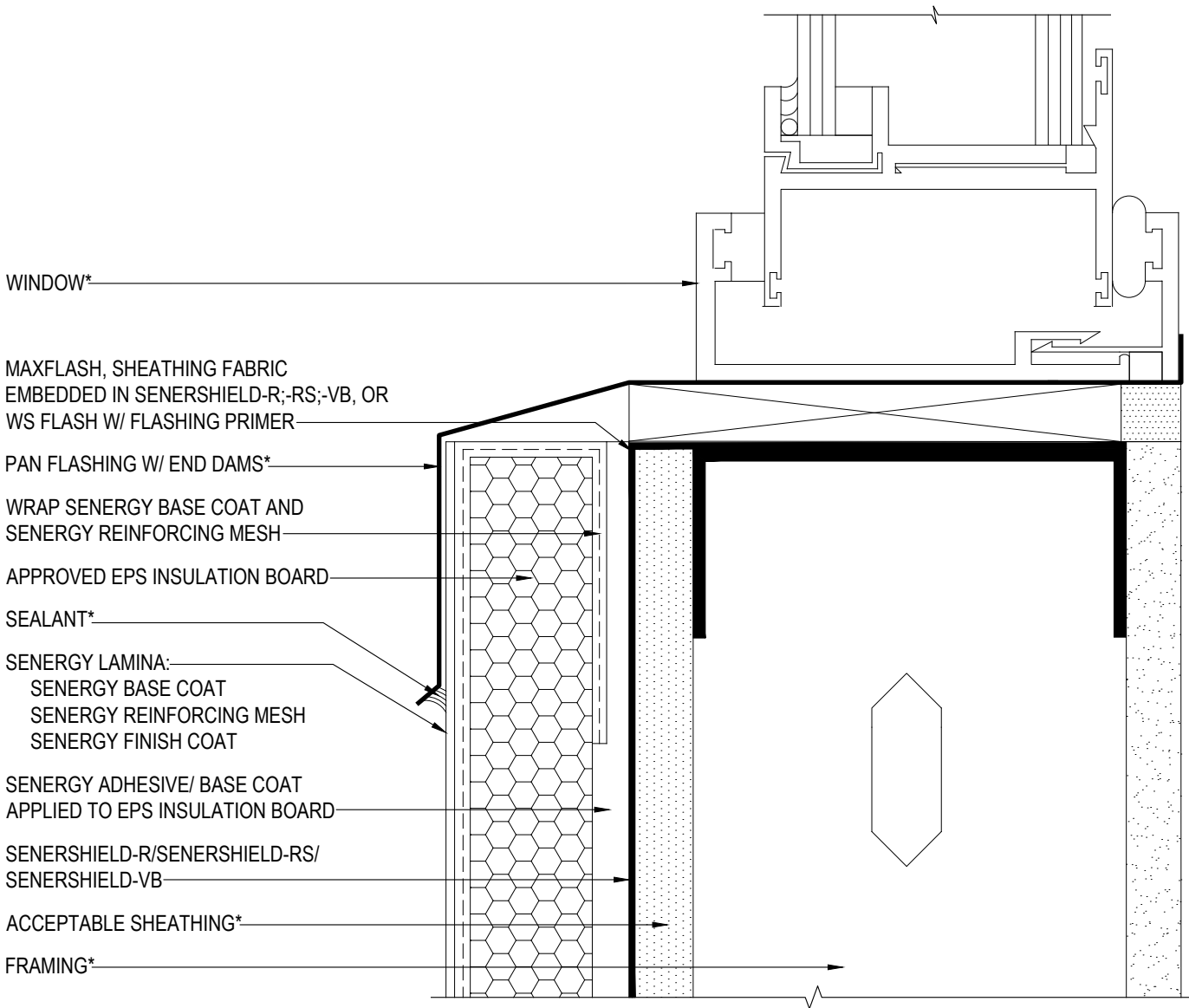
TYPICAL WINDOW JAMB (RECESSED) SENERGY CHANNELED ADHESIVE CI DESIGN

SCALE: NTS

24

Structure, substrates, flashing, and other items which are not part of the BASF Senergy Channeled Adhesive CI Design system are the responsibility of others. This detail is subject to change without notice. BASF Corporation - Wall Systems (herein after BASF Wall Systems) accepts no liability for the end use of this detail. For conditions not shown, consult BASF Wall Systems for review of specific detail.

BASF
We create chemistry



***BY OTHERS**

NOTE:

- EXTEND FLASHING MIN 2" (50 mm)
OVER CHanneled ADHESIVE CI DESIGN
- FLASHINGS ARE BY OTHERS AND
SHALL BE AS PER DESIGN /
CODE REQUIREMENT

REV 180205

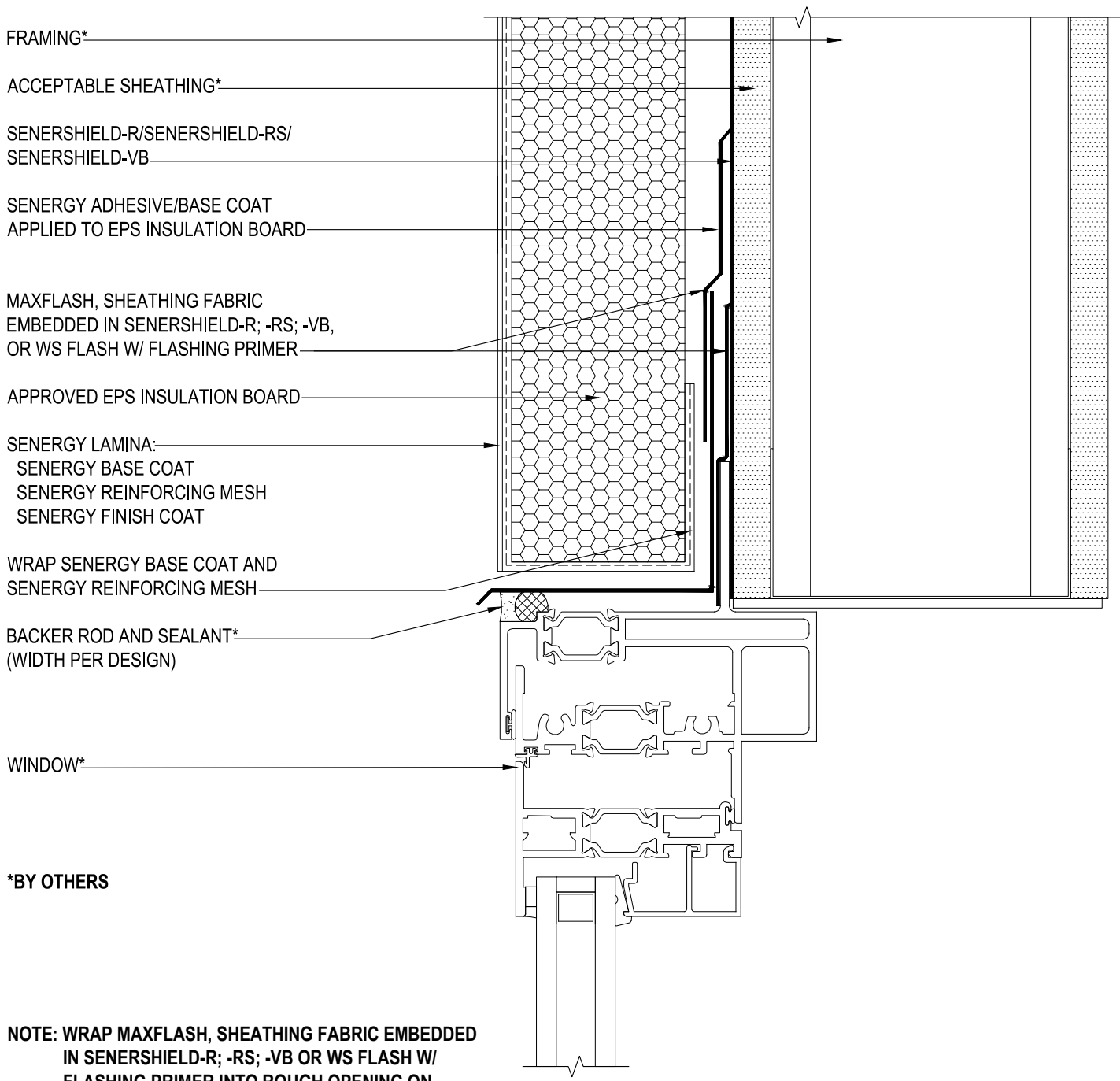
TYPICAL WINDOW SILL DETAIL (RECESSED) SENERGY CHanneled ADHESIVE CI DESIGN

SCALE: NTS

25

Structure, substrates, flashing, and other items which are not part of the BASF Senergy *Channeled Adhesive CI Design* system are the responsibility of others. This detail is subject to change without notice. BASF Corporation - Wall Systems (herein after BASF Wall Systems) accepts no liability for the end use of this detail. For conditions not shown, consult BASF Wall Systems for review of specific detail.





*BY OTHERS

NOTE: WRAP MAXFLASH, SHEATHING FABRIC EMBEDDED IN SENERSHIELD-R; -RS; -VB OR WS FLASH W/ FLASHING PRIMER INTO ROUGH OPENING ON HEAD IF ALSO INTENDED TO BE AN AIR BARRIER.

REV 180702

TYPICAL FLANGED WINDOW HEAD SENERGY CHanneled ADHESIVE CI DESIGN

SCALE: NTS
26

Structure, substrates, flashing, and other items which are not part of the BASF Senergy *Channeled Adhesive CI Design* system are the responsibility of others. This detail is subject to change without notice. BASF Corporation - Wall Systems (herein after BASF Wall Systems) accepts no liability for the end use of this detail. For conditions not shown, consult BASF Wall Systems for review of specific detail.



ACCEPTABLE SHEATHING*

APPROVED EPS INSULATION BOARD

SENERGY ADHESIVE/BASE COAT
APPLIED TO EPS INSULATION BOARD

SENERSHIELD-R/SENERSHIELD-RS/
SENERSHIELD-VB

FRAMING*

SENERGY LAMINA:
SENERGY BASE COAT
SENERGY REINFORCING MESH
SENERGY FINISH COAT

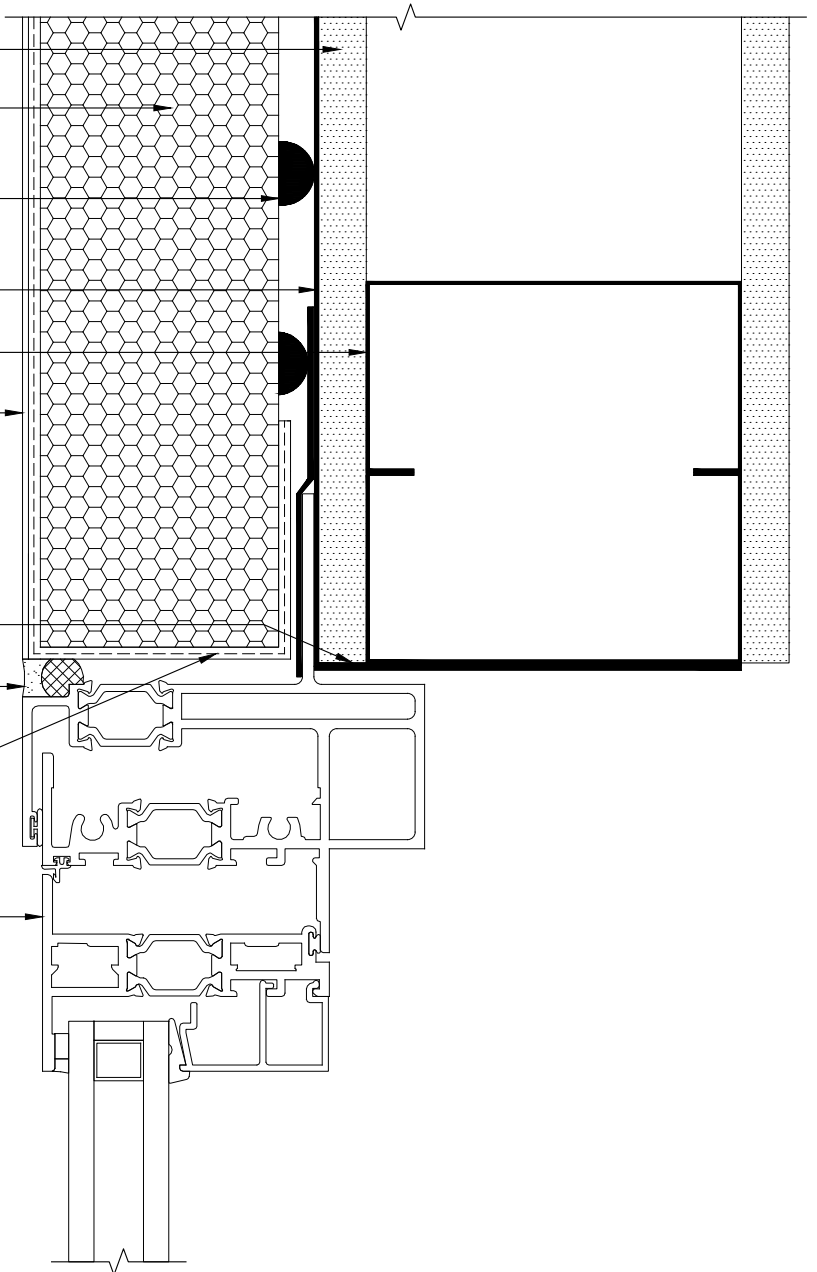
MAXFLASH, SHEATHING FABRIC
EMBEDDED IN SEENERSHIELD-R; -RS; -VB,
OR WS FLASH W/ FLASHING PRIMER

BACKER ROD AND SEALANT
(WIDTH PER DESIGN)*

WRAP SENERGY BASE COAT AND
SENERGY REINFORCING MESH

WINDOW*

*BY OTHERS



REV 180205

TYPICAL FLANGED WINDOW JAMB SENERGY CHanneled ADHESIVE CI DESIGN

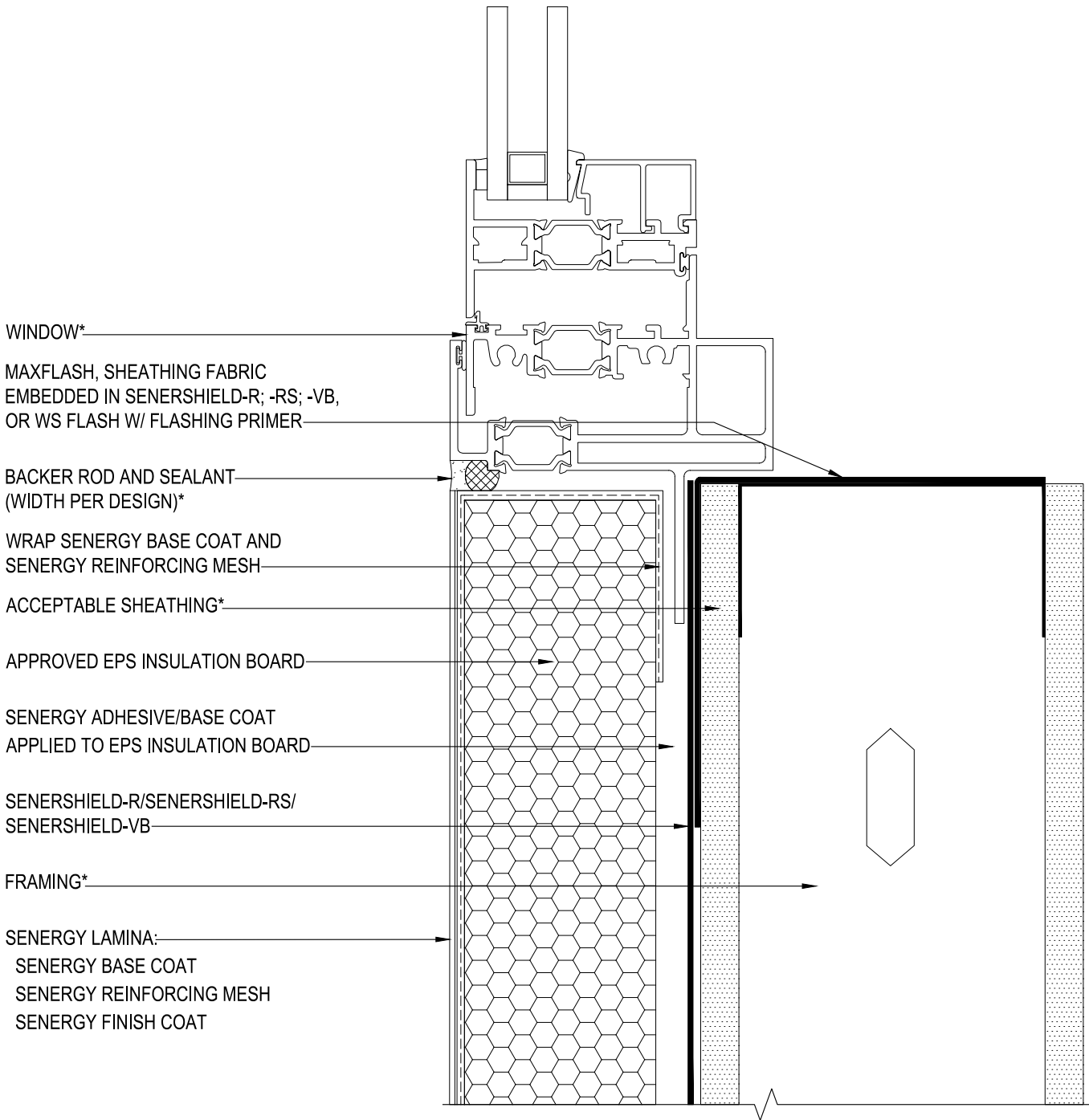
SCALE: NTS

27

Structure, substrates, flashing, and other items which are not part of the BASF Senergy *Channeled Adhesive CI Design* system are the responsibility of others. This detail is subject to change without notice. BASF Corporation - Wall Systems (herein after BASF Wall Systems) accepts no liability for the end use of this detail. For conditions not shown, consult BASF Wall Systems for review of specific detail.

■ - BASF

We create chemistry



*BY OTHERS

REV 180702

TYPICAL FLANGED WINDOW SILL SENERGY CHanneled ADHESIVE CI DESIGN

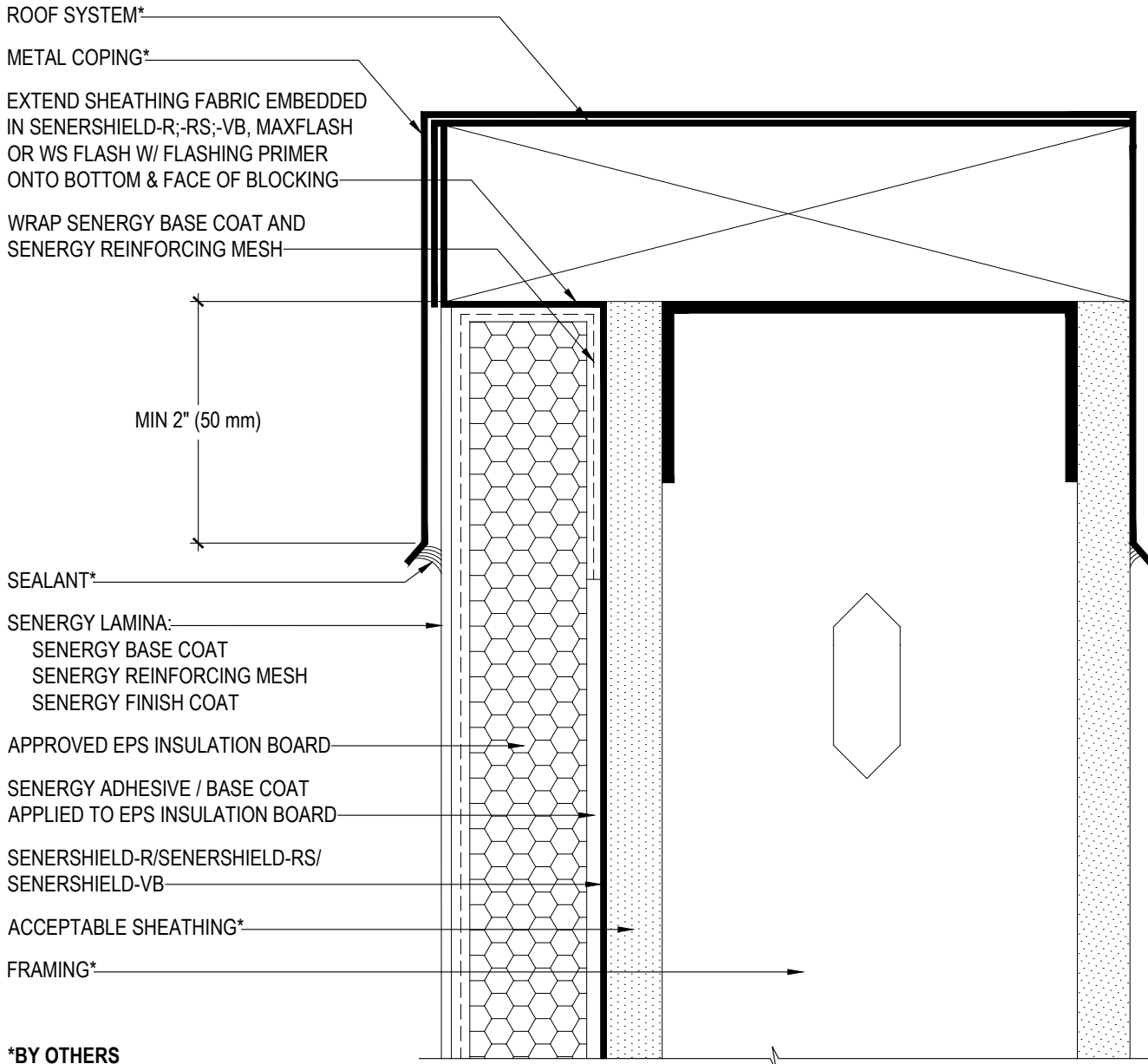
SCALE: NTS

28

Structure, substrates, flashing, and other items which are not part of the BASF SENERGY *Channeled Adhesive CI Design* system are the responsibility of others. This detail is subject to change without notice. BASF Corporation - Wall Systems (herein after BASF Wall Systems) accepts no liability for the end use of this detail. For conditions not shown, consult BASF Wall Systems for review of specific detail.

■ - BASF

We create chemistry



SEALANT*

SENERGY LAMINA:
 SENERGY BASE COAT
 SENERGY REINFORCING MESH
 SENERGY FINISH COAT

APPROVED EPS INSULATION BOARD

SENERGY ADHESIVE / BASE COAT
 APPLIED TO EPS INSULATION BOARD

SENERSHIELD-R/SENERSHIELD-RS/
 SENERSHIELD-VB

ACCEPTABLE SHEATHING*

FRAMING*

*BY OTHERS

REV 180702

TYPICAL METAL COPING DETAIL

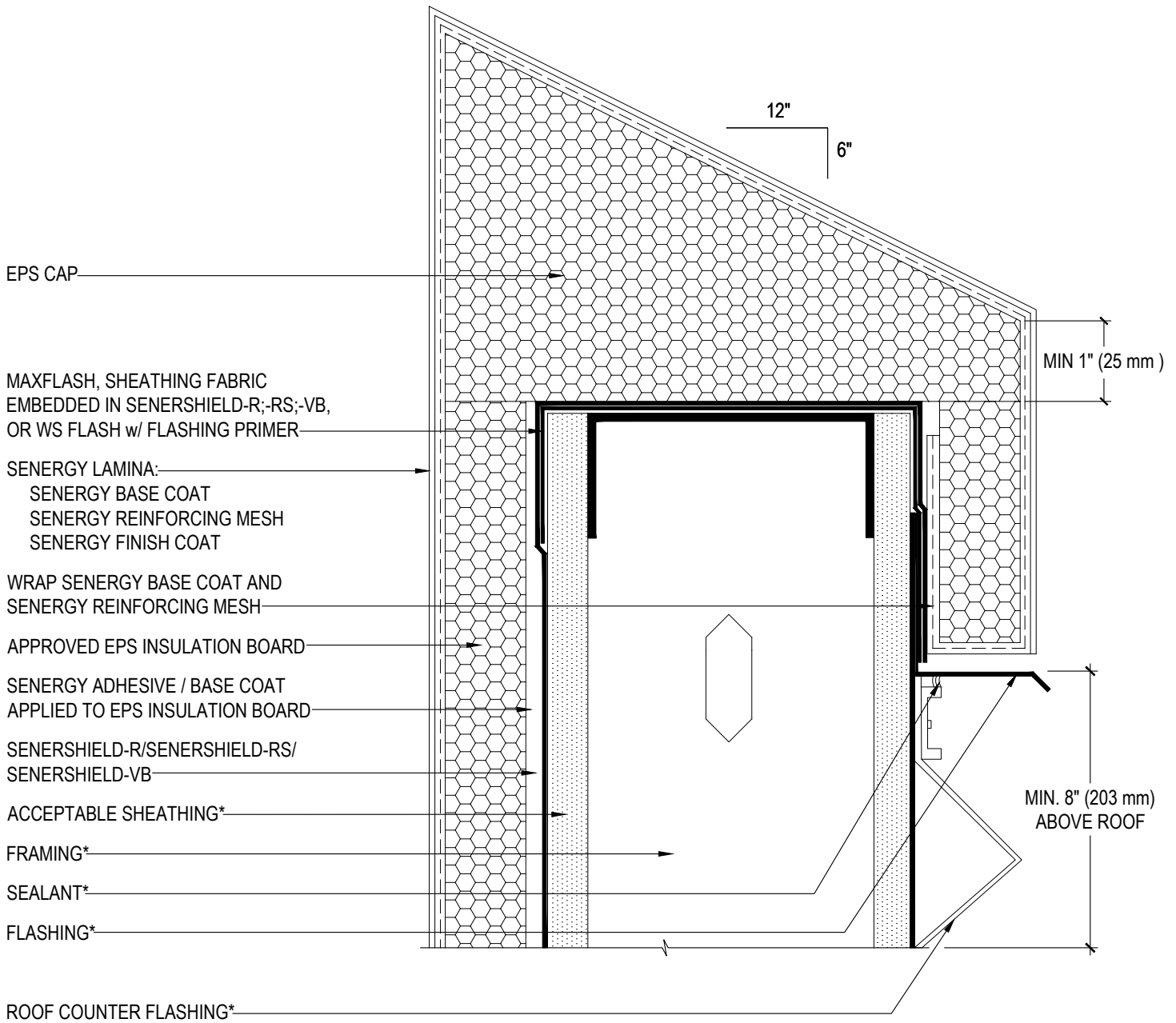
SENERGY CHanneLED ADHESIVE CI DESIGN

SCALE: NTS

29

Structure, substrates, flashing, and other items which are not part of the BASF Senergy *Channeled Adhesive CI Design* system are the responsibility of others. This detail is subject to change without notice. BASF Corporation - Wall Systems (herein after BASF Wall Systems) accepts no liability for the end use of this detail. For conditions not shown, consult BASF Wall Systems for review of specific detail.





*BY OTHERS

REV 180205

TYPICAL PARAPET CAP DETAIL

SENERGY CHanneLED ADHESIVE CI DESIGN

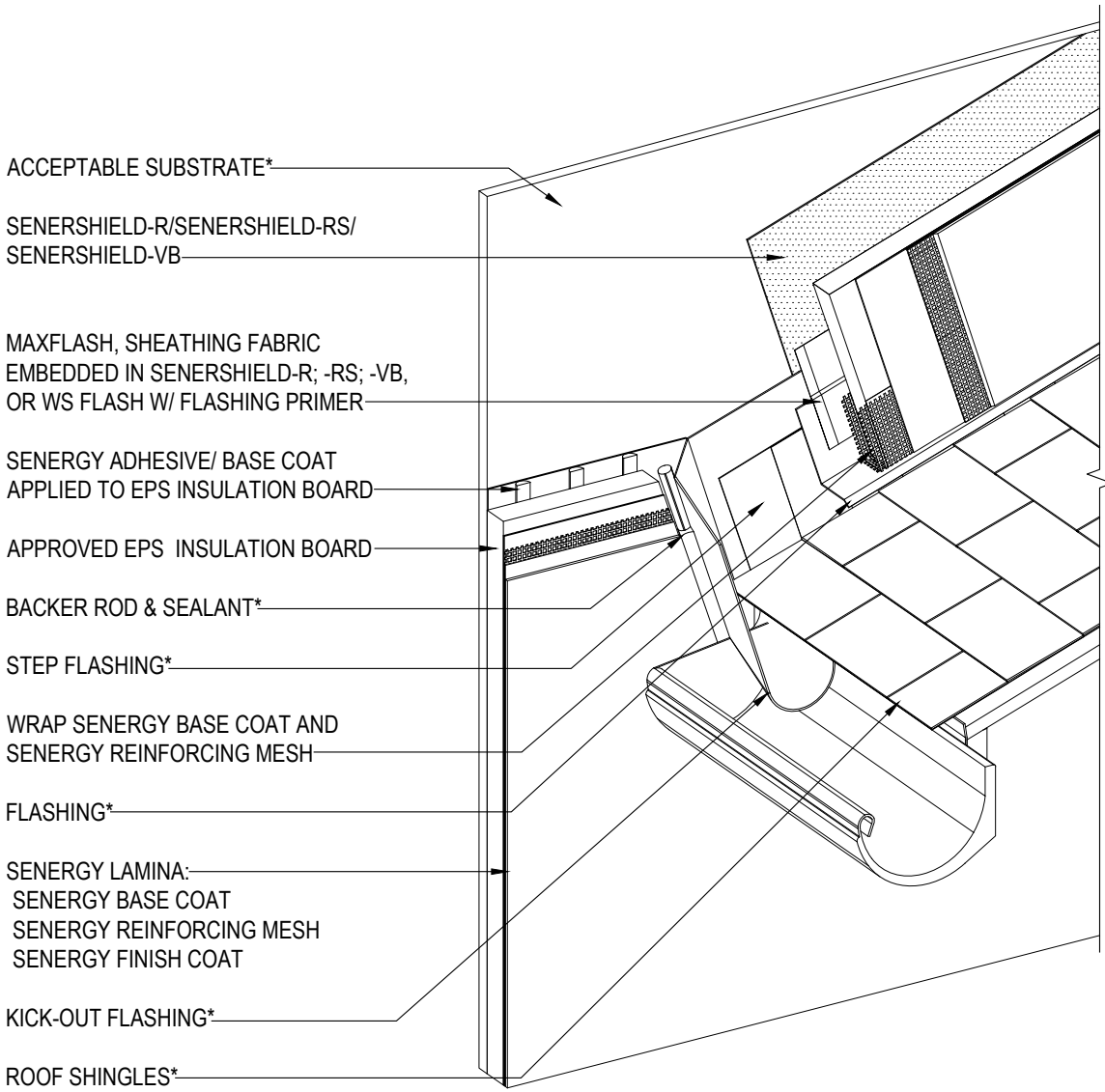
SCALE: NTS

30

Structure, substrates, flashing, and other items which are not part of the BASF Senergy *Channeled Adhesive CI Design* system are the responsibility of others. This detail is subject to change without notice. BASF Corporation - Wall Systems (herein after BASF Wall Systems) accepts no liability for the end use of this detail. For conditions not shown, consult BASF Wall Systems for review of specific detail.

■ - BASF

We create chemistry



*BY OTHERS

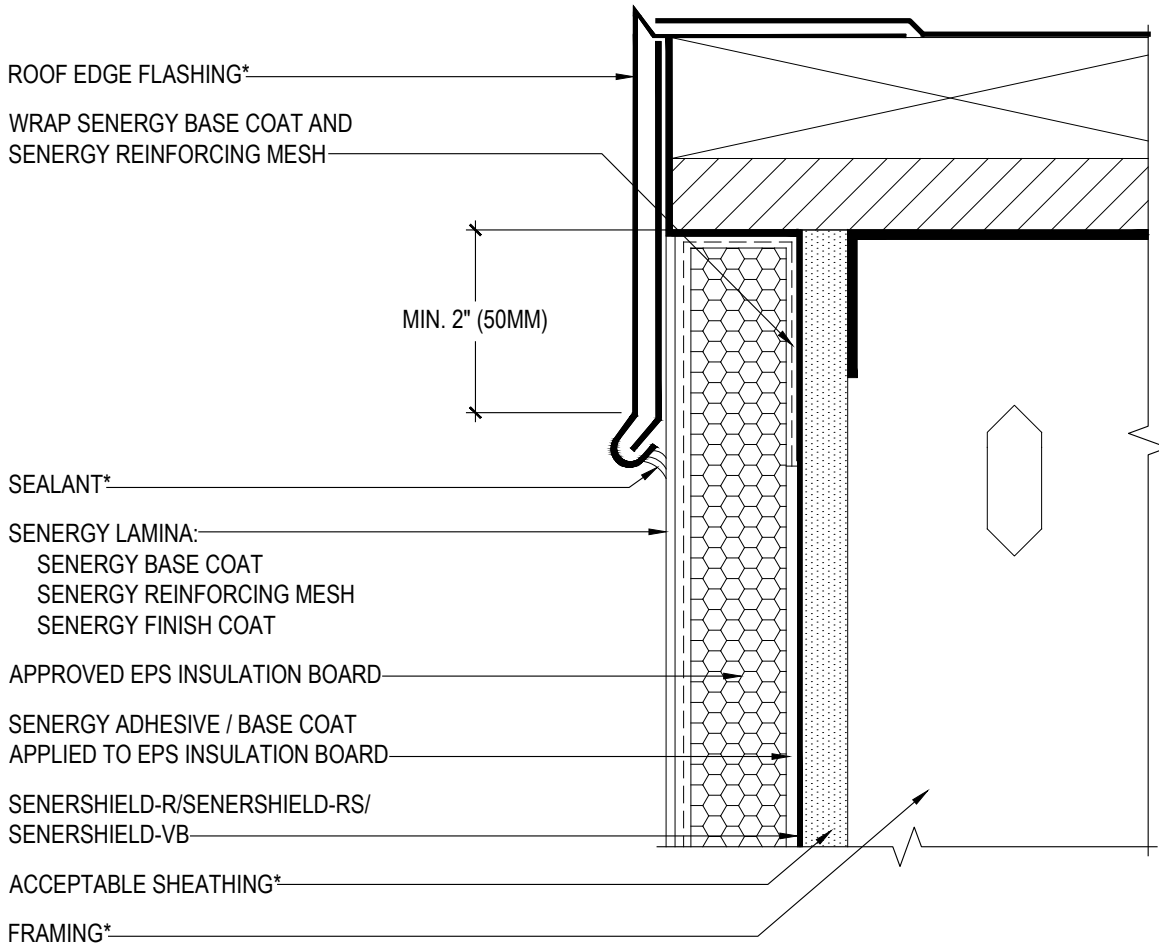
REV 180205

TYPICAL KICK-OUT FLASHING SENERGY CHanneled ADHESIVE CI DESIGN

SCALE: NTS
31

Structure, substrates, flashing, and other items which are not part of the BASF Senergy *Channeled Adhesive CI Design* system are the responsibility of others. This detail is subject to change without notice. BASF Corporation - Wall Systems (herein after BASF Wall Systems) accepts no liability for the end use of this detail. For conditions not shown, consult BASF Wall Systems for review of specific detail.





*BY OTHERS

REV 180702

TYPICAL ROOF EDGE FLASHING DETAIL SENERGY CHANNELED ADHESIVE CI DESIGN

SCALE: NTS

32

Structure, substrates, flashing, and other items which are not part of the BASF Senergy *Channeled Adhesive CI Design* system are the responsibility of others. This detail is subject to change without notice. BASF Corporation - Wall Systems (herein after BASF Wall Systems) accepts no liability for the end use of this detail. For conditions not shown, consult BASF Wall Systems for review of specific detail.

BASF
We create chemistry

FRAMING*

ACCEPTABLE SHEATHING*

SENERSHIELD-R/SENERSHIELD-RS/
SENERSHIELD-VB

SENERGY ADHESIVE/ BASE COAT
APPLIED TO EPS INSULATION BOARD

MAXFLASH, SHEATHING FABRIC
EMBEDDED IN SENERSHIELD-R;-RS;-VB,
OR WS FLASH W/ FLASHING PRIMER

APPROVED EPS INSULATION BOARD

SENERGY LAMINA:
SENERGY BASE COAT
SENERGY REINFORCING MESH
SENERGY FINISH COAT

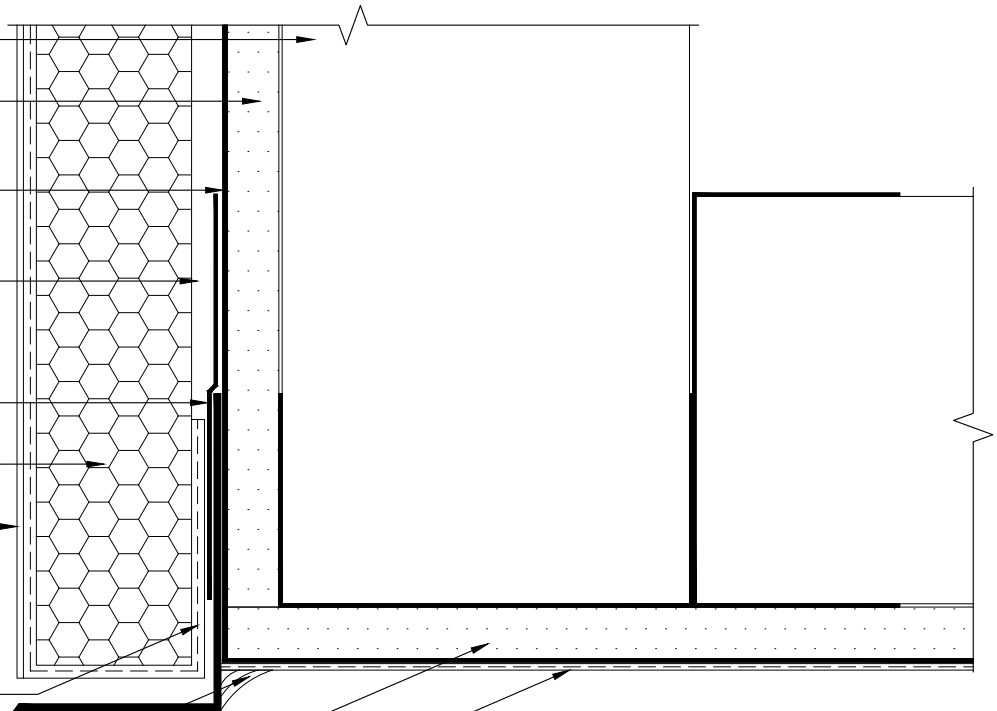
WRAP BASE COAT AND
SENERGY REINFORCING MESH

FLASHING*

SEALANT*

ACCEPTABLE SHEATHING*

SENERGY LAMINA:
SENERGY BASE COAT
SENERGY REINFORCING MESH
SENERGY FINISH COAT



*BY OTHERS

REV 180702

TYPICAL SECTION AT FASCIA / SOFFIT

SENERGY CHanneLED ADHESIVE CI DESIGN

SCALE: NTS

33

Structure, substrates, flashing, and other items which are not part of the BASF Senergy *Channeled Adhesive CI Design* system are the responsibility of others. This detail is subject to change without notice. BASF Corporation - Wall Systems (herein after BASF Wall Systems) accepts no liability for the end use of this detail. For conditions not shown, consult BASF Wall Systems for review of specific detail.

BASF
We create chemistry

RAILING*

RAILING BASE COVER SET IN SEALANT*

BACKER ROD & SEALANT
(WIDTH PER DESIGN)*

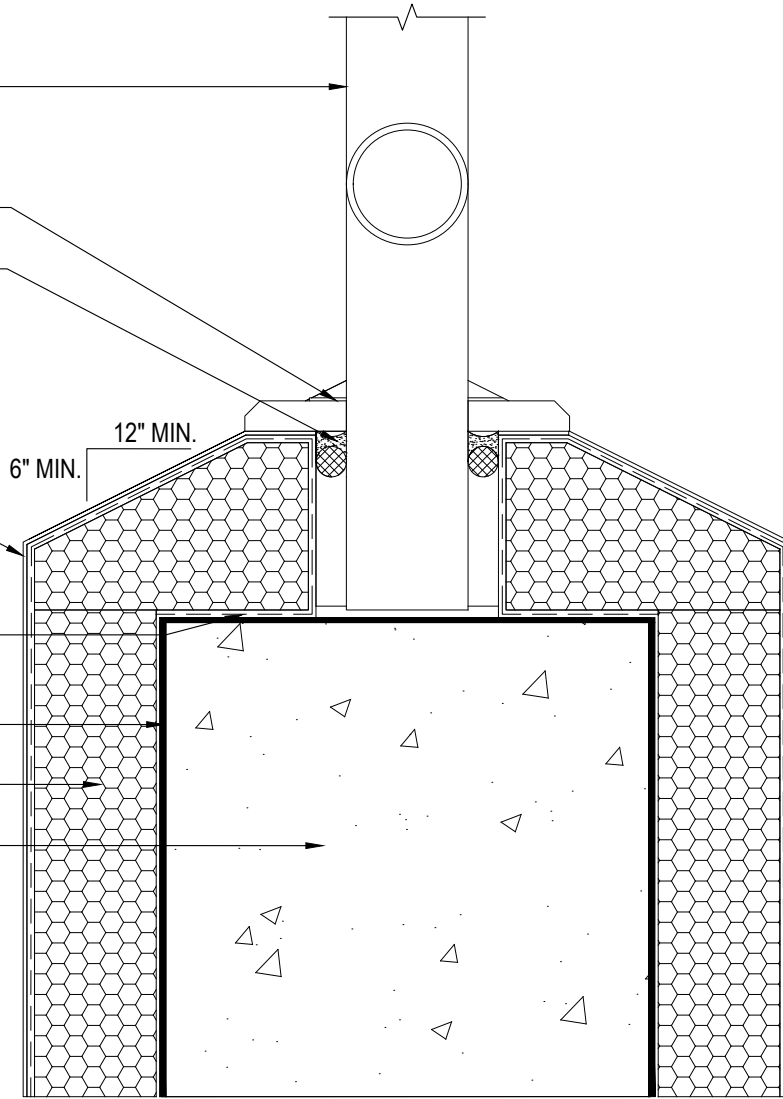
SENERGY LAMINA:
SENERGY BASE COAT
SENERGY REINFORCING MESH
SENERGY FINISH COAT

WRAP SENERGY BASE COAT AND
SENERGY REINFORCING MESH

SENERSHIELD-R/SENERSHIELD-RS/
SENERSHIELD-VB

APPROVED EPS INSULATION BOARD

ACCEPTABLE SUBSTRATE*



*BY OTHERS

REV 180702

TYPICAL CORE MOUNTED RAILING ATTACHMENT SENERGY CHanneled ADHESIVE CI DESIGN

SCALE: NTS

34

Structure, substrates, flashing, and other items which are not part of the BASF Senergy *Channeled Adhesive CI Design* system are the responsibility of others. This detail is subject to change without notice. BASF Corporation - Wall Systems (herein after BASF Wall Systems) accepts no liability for the end use of this detail. For conditions not shown, consult BASF Wall Systems for review of specific detail.

BASF
We create chemistry

FRAMING*

ACCEPTABLE SHEATHING*

SEBERSHIELD-R/SEBERSHIELD-RS/
SEBERSHIELD-VB

ADHESIVE/ BASE COAT APPLIED TO
EPS INSULATION BOARD

APPROVED EPS INSULATION BOARD

SENERGY LAMINA:
SENERGY BASE COAT
SENERGY REINFORCING MESH
SENERGY FINISH COAT

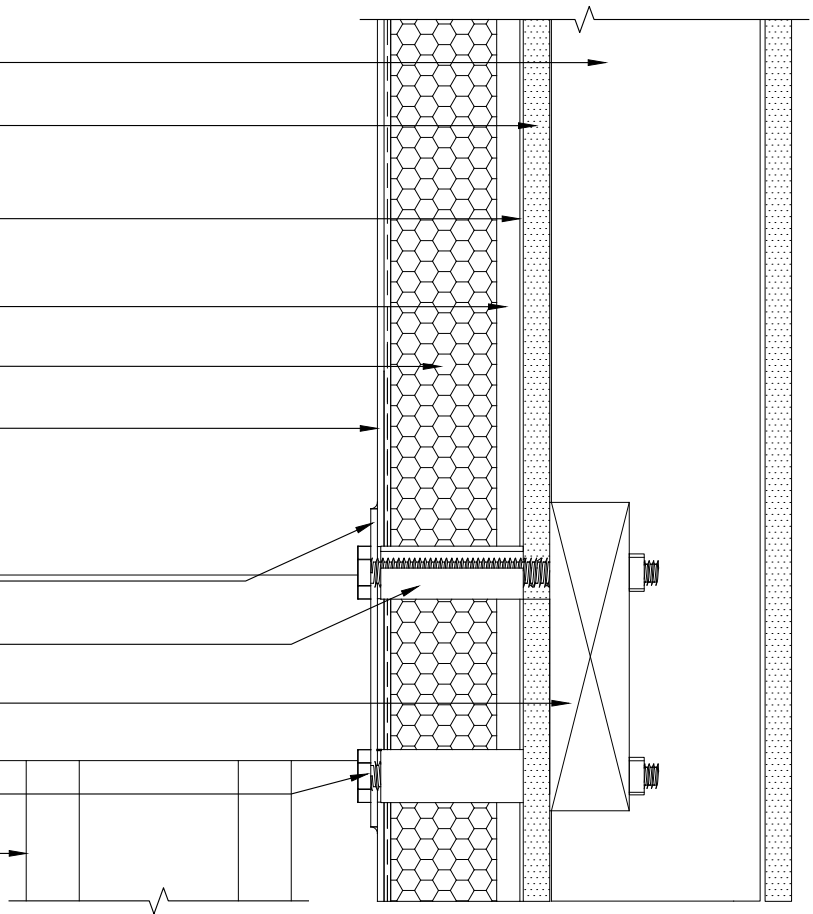
MOUNTING BRACKET SET IN SEALANT*

SLEEVE SET IN SEALANT*

WOOD BLOCKING*

MECHANICAL FASTENER SET IN
SEALANT*

RAILING*



*BY OTHERS

REV 180205

TYPICAL RAILING ATTACHMENT

SENERGY CHanneLED ADHESIVE CI DESIGN

SCALE: NTS

35

Structure, substrates, flashing, and other items which are not part of the BASF Senergy *Channeled Adhesive CI Design* system are the responsibility of others. This detail is subject to change without notice. BASF Corporation - Wall Systems (herein after BASF Wall Systems) accepts no liability for the end use of this detail. For conditions not shown, consult BASF Wall Systems for review of specific detail.

■ - BASF
We create chemistry

FRAMING*

ACCEPTABLE SHEATHING*

SENESSHIELD-R/SENESSHIELD-RS/
SENESSHIELD-VB

ADHESIVE/ BASE COAT APPLIED TO
EPS INSULATION BOARD

APPROVED EPS INSULATION BOARD

SENERGY LAMINA:
SENERGY BASE COAT
SENERGY REINFORCING MESH
SENERGY FINISH COAT

SIGN*

SLEEVE SET IN SEALANT*

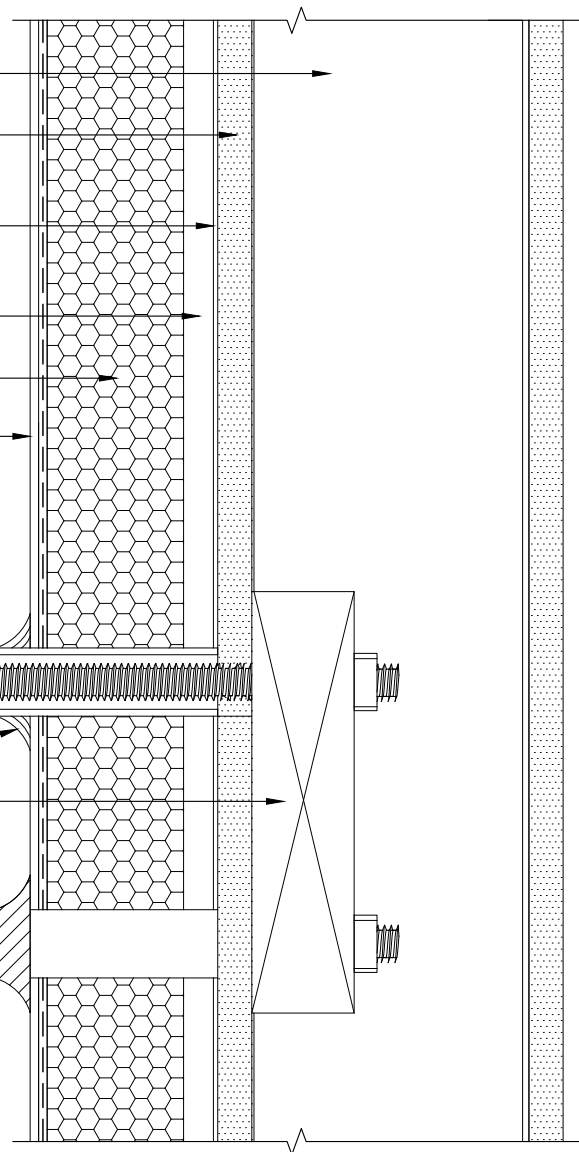
SEALANT AT PERIMETER OF
PENETRATION*

WOOD BLOCKING*

MOUNTING BRACKET*

MECHANICAL FASTENER SET IN
SEALANT*

WASHER*



*BY OTHERS

REV 180205

TYPICAL SIGN ATTACHMENT

SENERGY CHanneled Adhesive CI DESIGN

SCALE: NTS

36

Structure, substrates, flashing, and other items which are not part of the BASF Senergy *Channeled Adhesive CI Design* system are the responsibility of others. This detail is subject to change without notice. BASF Corporation - Wall Systems (herein after BASF Wall Systems) accepts no liability for the end use of this detail. For conditions not shown, consult BASF Wall Systems for review of specific detail.

BASF
We create chemistry