



Finestone Stucco Plus Wall System

Premium Cement Plaster Stucco with a Finestop
Fluid Applied Air/Water-Resistive Barrier

Typical Details

(THIS PAGE INTENTIONALLY LEFT BLANK)

Finestone Stucco Plus Wall System

Typical Details

Premium Cement Plaster Stucco with a Finestop Fluid Applied
Air/Water-Resistive Barrier

Table of Contents

- | | |
|----------------------------------|---|
| 1. Typical with Steel Framing | 13. Typical EPS Shape Application |
| 2. Typical with Wood Framing | 14. Typical Termination at Soffit/Gable End |
| 3. Typical with CMU | 15. Typical Termination at Foundation |
| 4. Typical Surface Control Joint | 16. Typical Kick-out Flashing |
| 5. Typical Expansion Joint | 17. Typical Termination at Deck |
| 6. Typical Drainage at Floorline | 18. Typical Coping |
| 7. Typical Clad Window Jamb | 19. Typical Corner Bead |
| 8. Typical Clad Window Head | 20. Typical Downspout Application |
| 9. Typical Clad Window Sill | 21. Typical Pipe Penetration |
| 10. Typical Primed Window Head | 22. Typical Light Fixture |
| 11. Typical Primed Window Jamb | 23. Typical Dryer Vent |
| 12. Typical Primed Window Sill | |

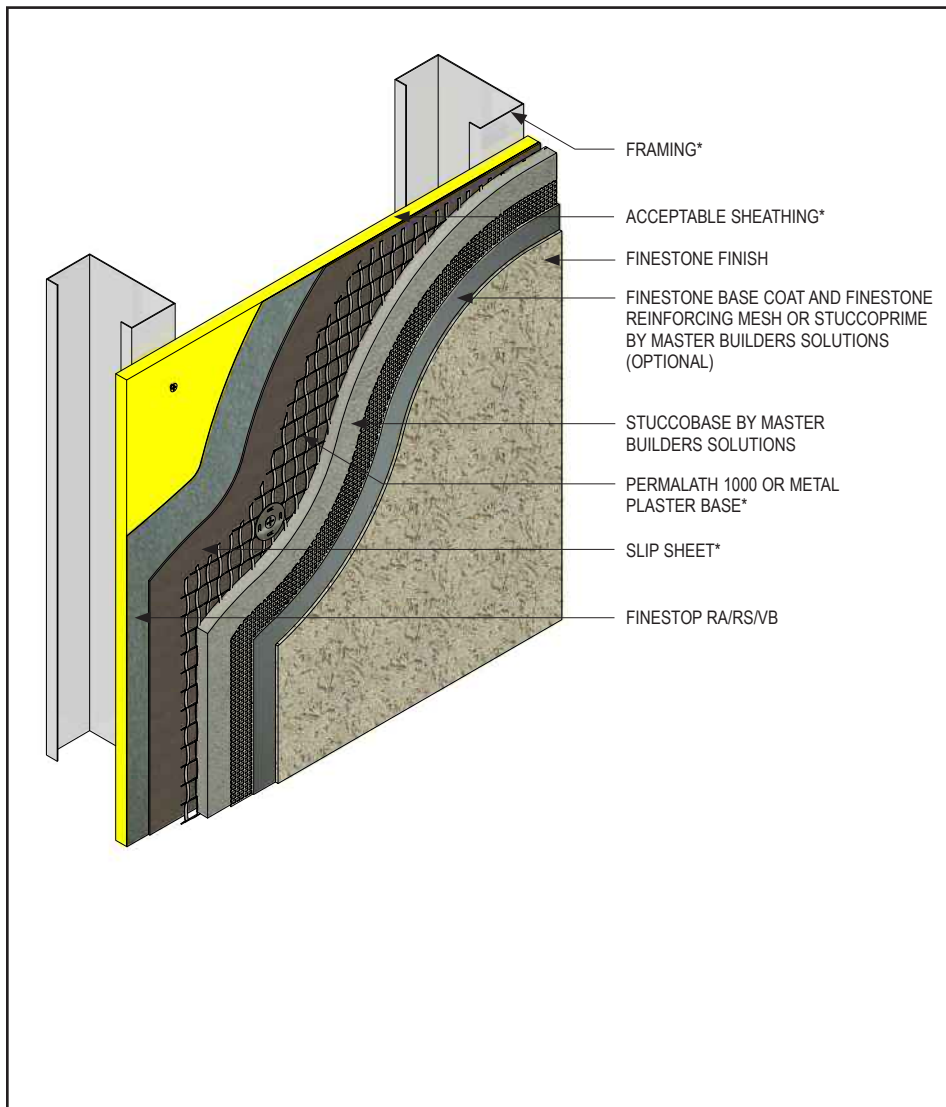
Notes:

- **Install Master Builders Solutions materials in accordance with current installation instructions.**
- **Unsatisfactory conditions shall be reported to the General Contractor and corrected before the application of Master Builders Solutions products.**
- **The details within represent Master Builders Solutions Construction Systems US, LLC (hereinafter Master Builders Solutions) latest recommendations. They are presented in good faith by Master Builders Solutions. The details are subject to change without notice. Master Builders Solutions accepts no liability for the end use of the details. For conditions not shown, consult Master Builders Solutions for review of specific detail.**

(THIS PAGE INTENTIONALLY LEFT BLANK)

Finestone Stucco Plus Wall System

TYPICAL WITH STEEL FRAMING



- Install all materials in accordance with installation instructions and applicable code.
- Basic requirements for water-resistive barrier:
 - Finestop RA/RS/VB with one layer minimum Grade D as slip sheet.
 - Wood based sheathing requires two coats of Finestop RA/RS/VB prior to installation of slip sheet.
 - Comply with applicable local building code.

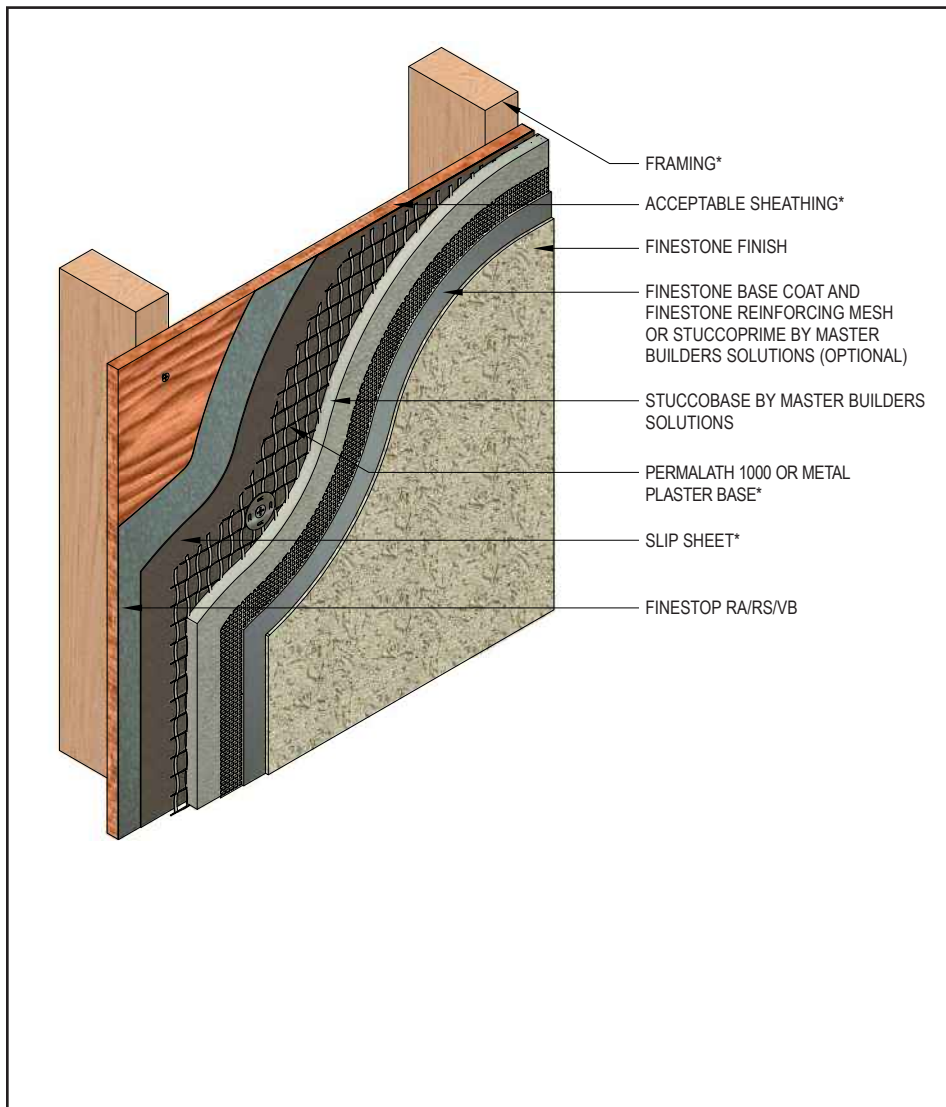
FSP-01 0821

(*NOTE: BY OTHERS)

This detail represents Master Builders Solutions Construction Systems US, LLC (hereinafter Master Builders Solutions) latest recommendations. It is presented in good faith by Master Builders Solutions. The detail is subject to change without notice. Master Builders Solutions accepts no liability for the end use of the detail. For conditions not shown, consult Master Builders Solutions for review of specific detail.

Finestone Stucco Plus Wall System

TYPICAL WITH WOOD FRAMING



- Install all materials in accordance with installation instructions and applicable code.
- Basic requirements for water-resistive barrier:
 - Finestop RA/RS/VB with one layer minimum Grade D as slip sheet.
 - Wood based sheathing requires two coats of Finestop RA/RS/VB prior to installation of slip sheet.
 - Comply with applicable local building code.

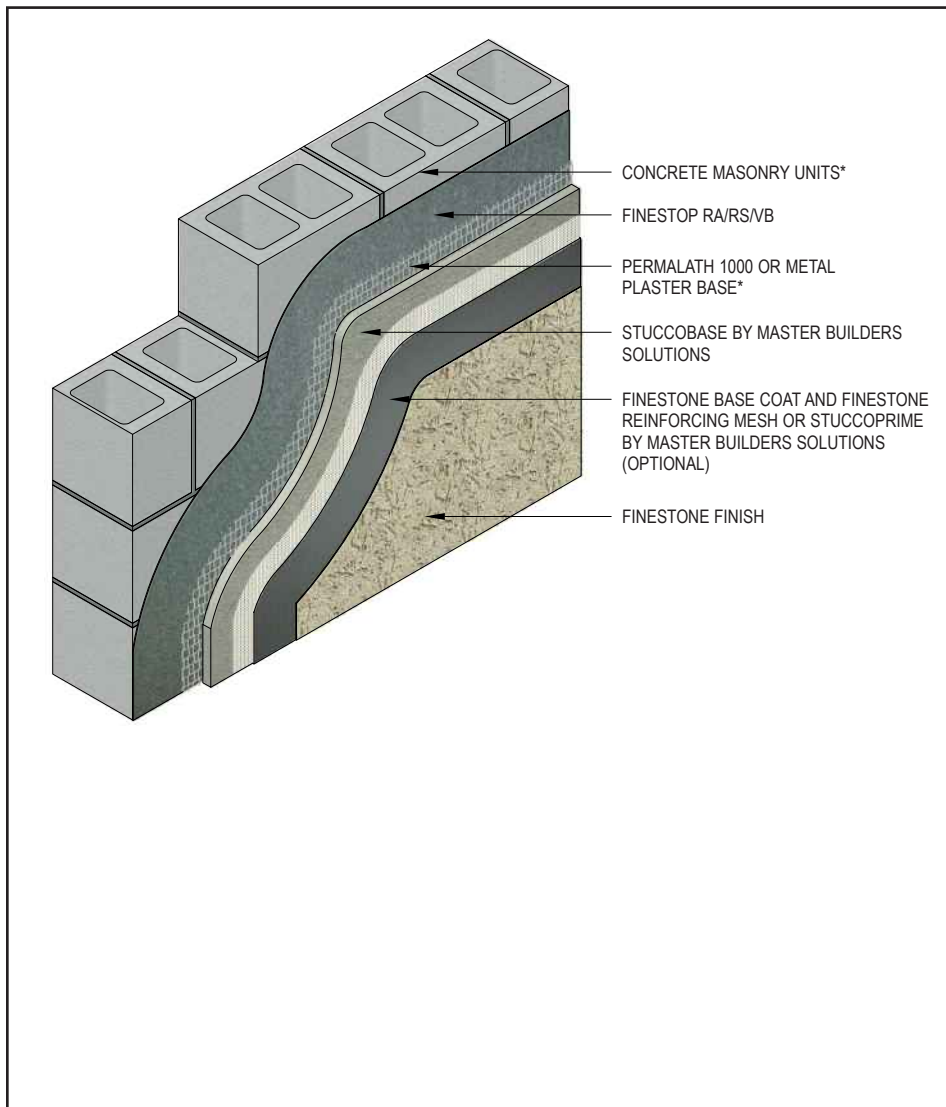
FSP-02 0821

(*NOTE: BY OTHERS)

This detail represents Master Builders Solutions Construction Systems US, LLC (hereinafter Master Builders Solutions) latest recommendations. It is presented in good faith by Master Builders Solutions. The detail is subject to change without notice. Master Builders Solutions accepts no liability for the end use of the detail. For conditions not shown, consult Master Builders Solutions for review of specific detail.

Finestone Stucco Plus Wall System

TYPICAL WITH CMU



- Install all materials in accordance with installation instructions and applicable code.
- Basic requirements for water-resistive barrier:
 - Finestop RA/RS/VB with one layer minimum Grade D as slip sheet.
 - Multiple coats of Finestop RA/RS/VB may be required to achieve a pinhole free application.
 - Comply with applicable local building code.

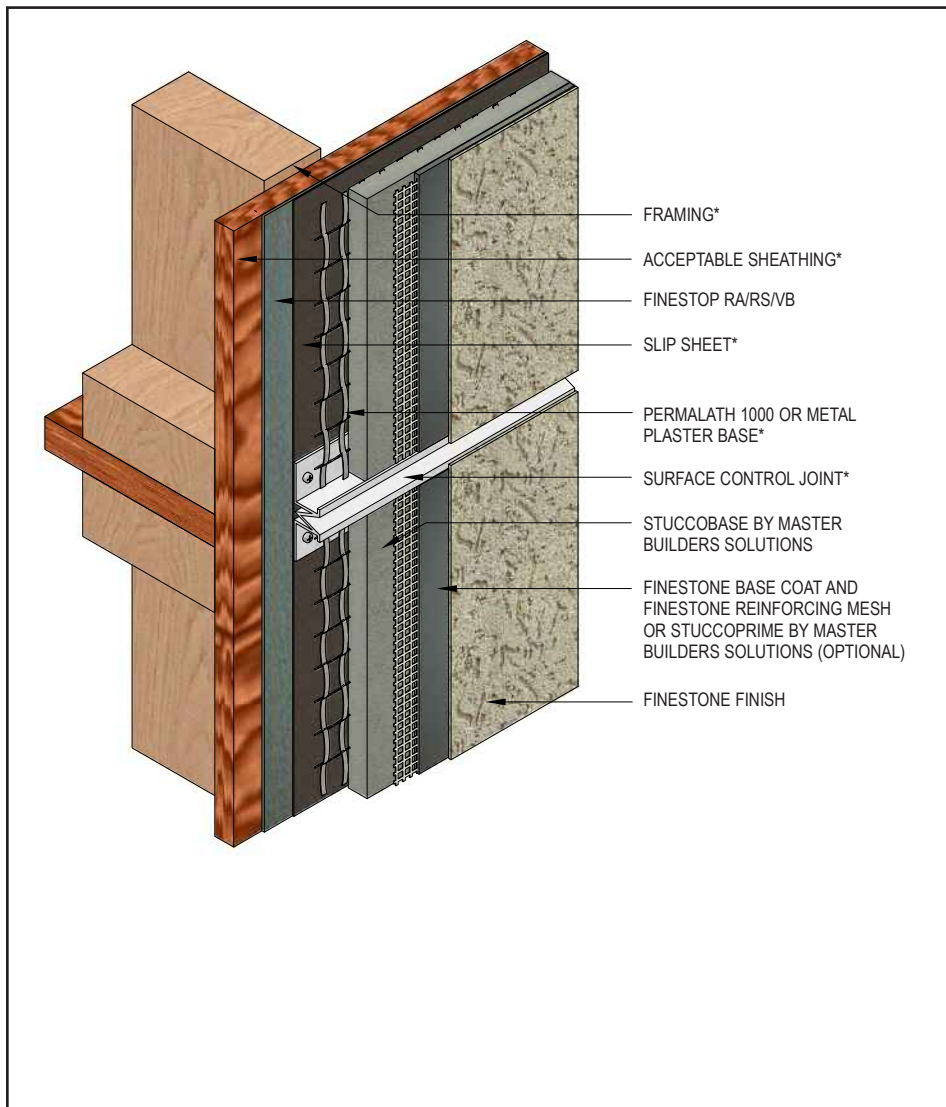
FSP-03 0821

(*NOTE: BY OTHERS)

This detail represents Master Builders Solutions Construction Systems US, LLC (hereinafter Master Builders Solutions) latest recommendations. It is presented in good faith by Master Builders Solutions. The detail is subject to change without notice. Master Builders Solutions accepts no liability for the end use of the detail. For conditions not shown, consult Master Builders Solutions for review of specific detail.

Finestone Stucco Plus Wall System

TYPICAL SURFACE CONTROL JOINT



- Install all materials in accordance with installation instructions and applicable code.
- Provide control joints at a maximum 144 sq.ft. (13.4 sq. m.) and placement as determined by the design professional.
- Install per requirements of ASTM C1063.
- Lath must be broken at the joint accessory.

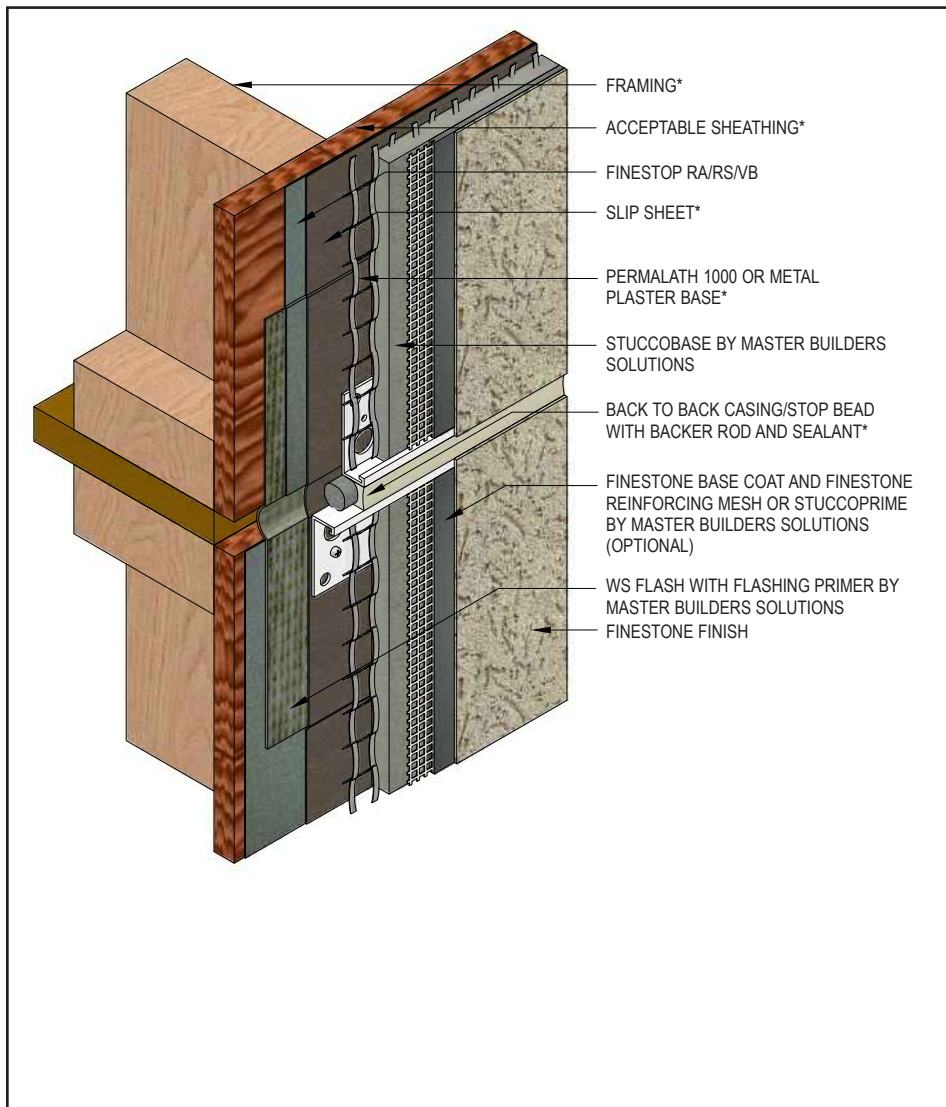
FSP-04 0821

(*NOTE: BY OTHERS)

This detail represents Master Builders Solutions Construction Systems US, LLC (hereinafter Master Builders Solutions) latest recommendations. It is presented in good faith by Master Builders Solutions. The detail is subject to change without notice. Master Builders Solutions accepts no liability for the end use of the detail. For conditions not shown, consult Master Builders Solutions for review of specific detail.

Finestone Stucco Plus Wall System

TYPICAL EXPANSION JOINT



- Install all materials in accordance with installation instructions and applicable code.
- Install expansion joints in the system at all changes in substrate, through existing expansion joints, and where movement is anticipated. It is the sole responsibility of the design professional to determine specific expansion joint location, placement and design.
- Install per requirements of ASTM C1063.
- Lath must be broken at the joint accessory.

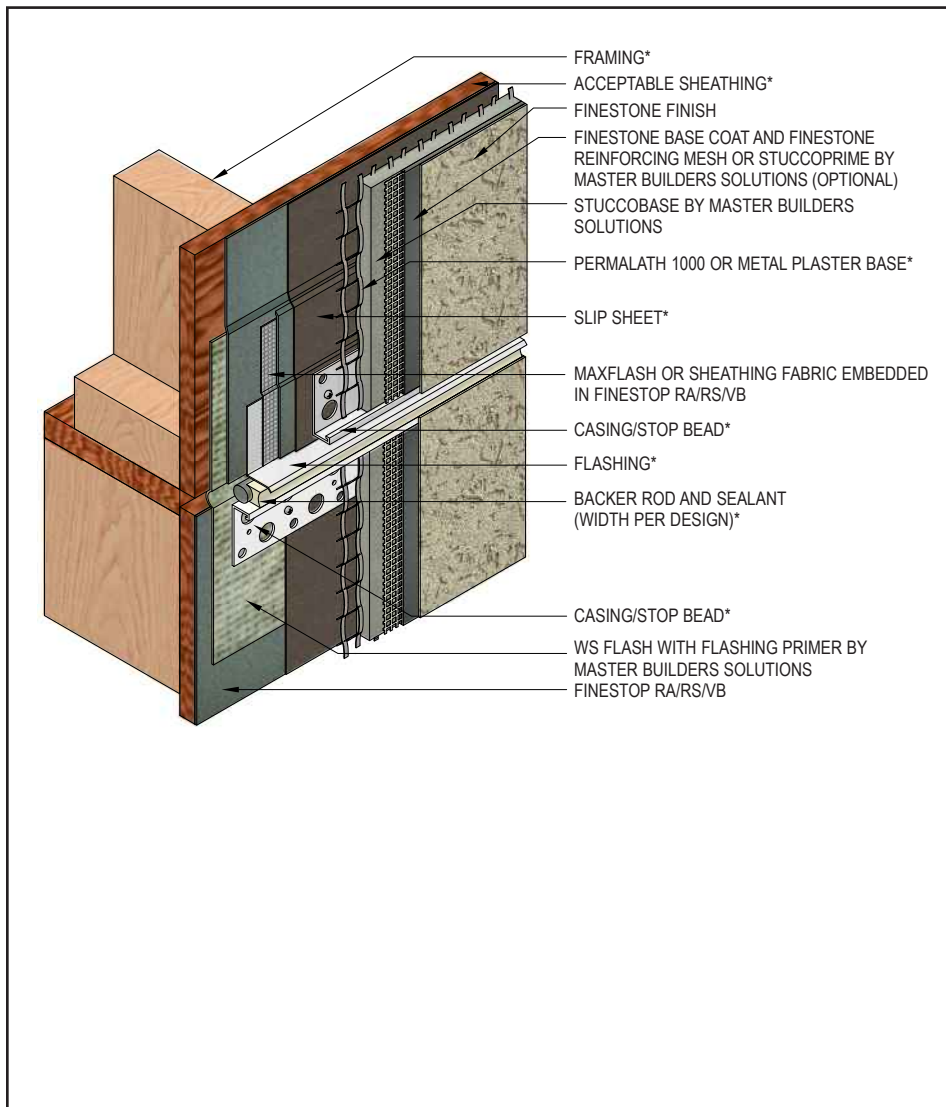
FSP-05 0821

(*NOTE: BY OTHERS)

This detail represents Master Builders Solutions Construction Systems US, LLC (hereinafter Master Builders Solutions) latest recommendations. It is presented in good faith by Master Builders Solutions. The detail is subject to change without notice. Master Builders Solutions accepts no liability for the end use of the detail. For conditions not shown, consult Master Builders Solutions for review of specific detail.

Finestone Stucco Plus Wall System

TYPICAL DRAINAGE AT FLOORLINE



- Install all materials in accordance with installation instructions and applicable code.
- Water-resistive barrier shall be installed over flashing.
- Water-resistive barrier shall be installed up and behind flashing before terminating.
- Provide end-dams at flashing terminations as required.
- Lath must be broken at the joint accessory.
- It is recommended that a means for drainage is provided at every floor.

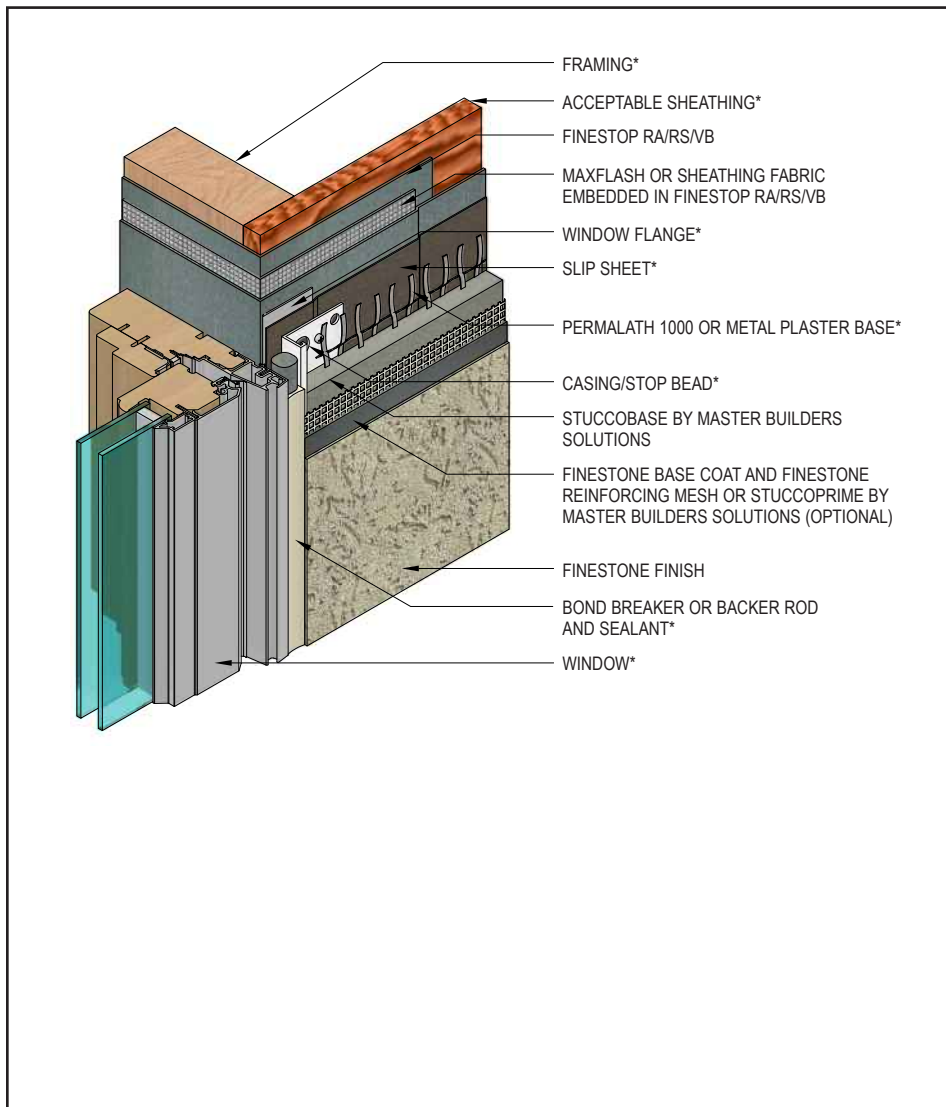
FSP-06 0821

(*NOTE: BY OTHERS)

This detail represents Master Builders Solutions Construction Systems US, LLC (hereinafter Master Builders Solutions) latest recommendations. It is presented in good faith by Master Builders Solutions. The detail is subject to change without notice. Master Builders Solutions accepts no liability for the end use of the detail. For conditions not shown, consult Master Builders Solutions for review of specific detail.

Finestone Stucco Plus Wall System

TYPICAL CLAD WINDOW – JAMB



- Install all materials in accordance with installation instructions and applicable code.
- Ensure water-resistive barrier is properly applied into the rough openings in accordance with application guidelines. See *Air/Water-Resistive/Vapor Barrier Application Guidelines* technical bulletin.

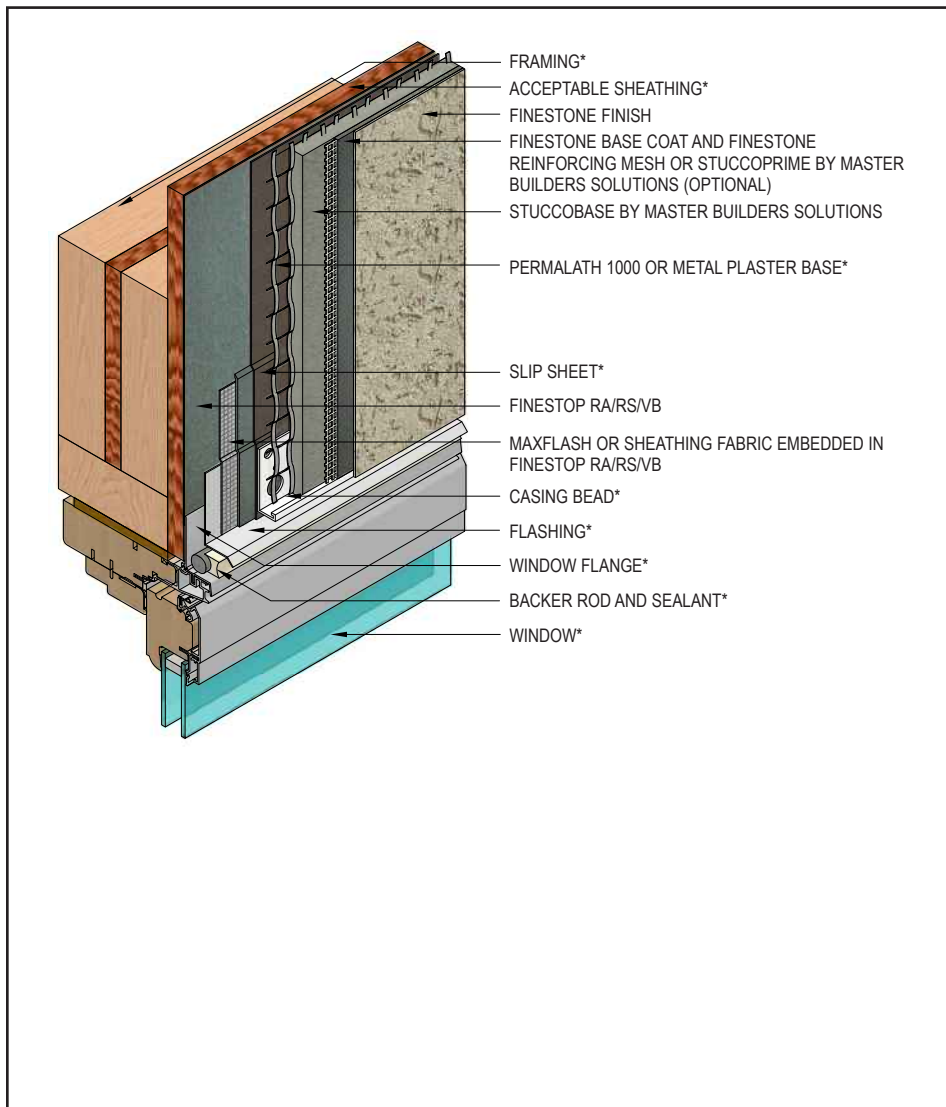
FSP-07 0821

(*NOTE: BY OTHERS)

This detail represents Master Builders Solutions Construction Systems US, LLC (hereinafter Master Builders Solutions) latest recommendations. It is presented in good faith by Master Builders Solutions. The detail is subject to change without notice. Master Builders Solutions accepts no liability for the end use of the detail. For conditions not shown, consult Master Builders Solutions for review of specific detail.

Finestone Stucco Plus Wall System

TYPICAL CLAD WINDOW – HEAD



- Install all materials in accordance with installation instructions and applicable code.
- Ensure water-resistive barrier is properly applied over the head flashing. See *Air/Water Resistive/Vapor Barrier Application Guidelines* technical bulletin.
- Provide end-dams at flashing terminations.

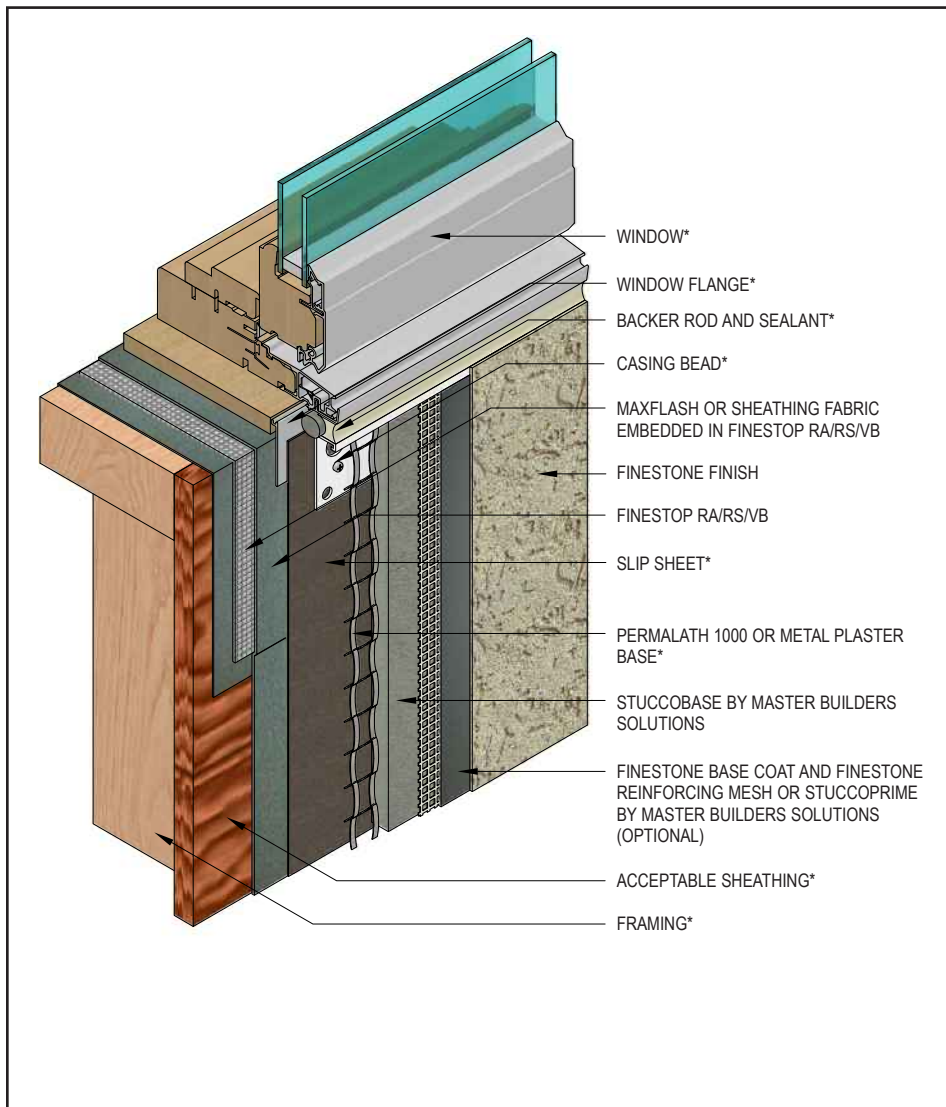
FSP-08 0821

(*NOTE: BY OTHERS)

This detail represents Master Builders Solutions Construction Systems US, LLC (hereinafter Master Builders Solutions) latest recommendations. It is presented in good faith by Master Builders Solutions. The detail is subject to change without notice. Master Builders Solutions accepts no liability for the end use of the detail. For conditions not shown, consult Master Builders Solutions for review of specific detail.

Finestone Stucco Plus Wall System

TYPICAL CLAD WINDOW – SILL



- Install all materials in accordance with installation instructions and applicable code.
- Ensure water-resistive barrier is properly applied over the head flashing. See *Air/Water-Resistive/Vapor Barrier Application Guidelines* technical bulletin.

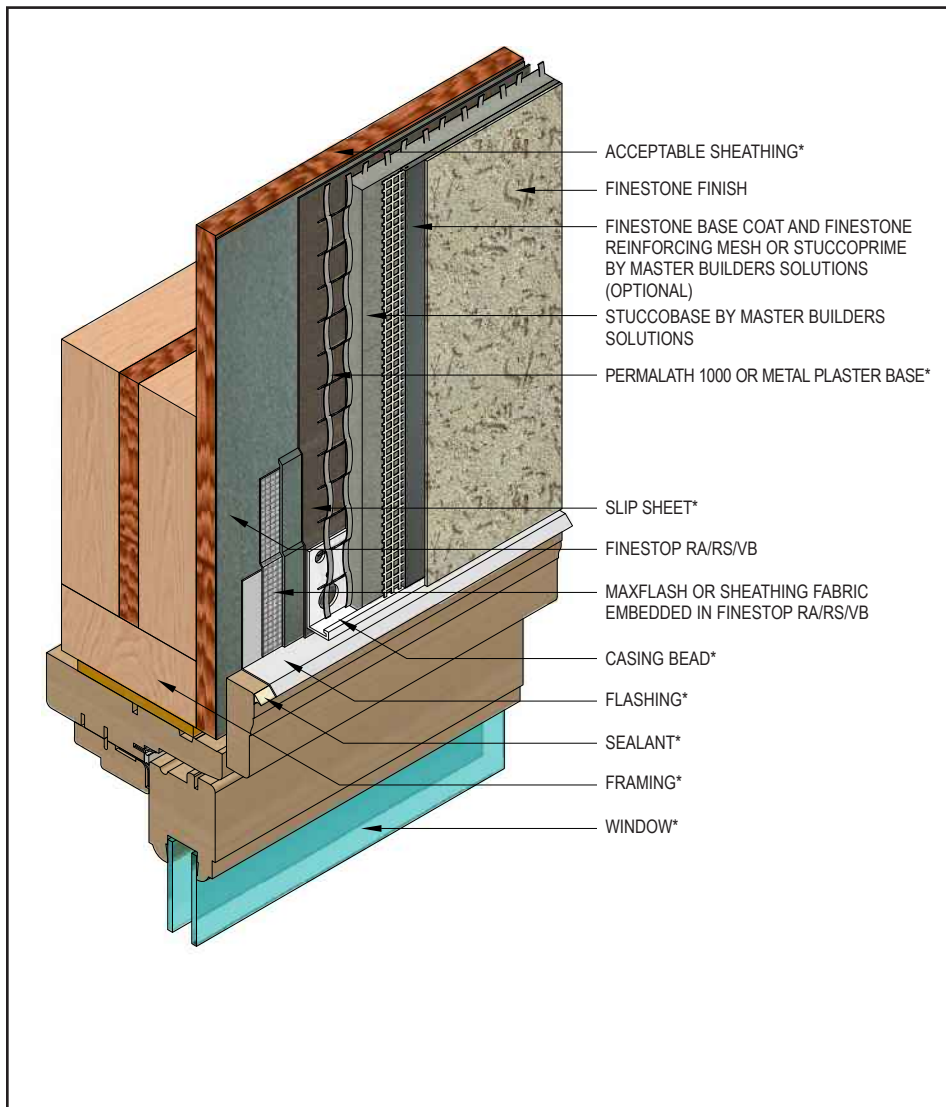
FSP-09 0821

(*NOTE: BY OTHERS)

This detail represents Master Builders Solutions Construction Systems US, LLC (hereinafter Master Builders Solutions) latest recommendations. It is presented in good faith by Master Builders Solutions. The detail is subject to change without notice. Master Builders Solutions accepts no liability for the end use of the detail. For conditions not shown, consult Master Builders Solutions for review of specific detail.

Finestone Stucco Plus Wall System

TYPICAL PRIMED WINDOW – HEAD



- Install all materials in accordance with installation instructions and applicable code.
- Ensure water-resistive barrier is properly applied over the head flashing. See *Air/Water-Resistive/Vapor Barrier Application Guidelines* technical bulletin.
- Provide end-dams at flashing terminations.

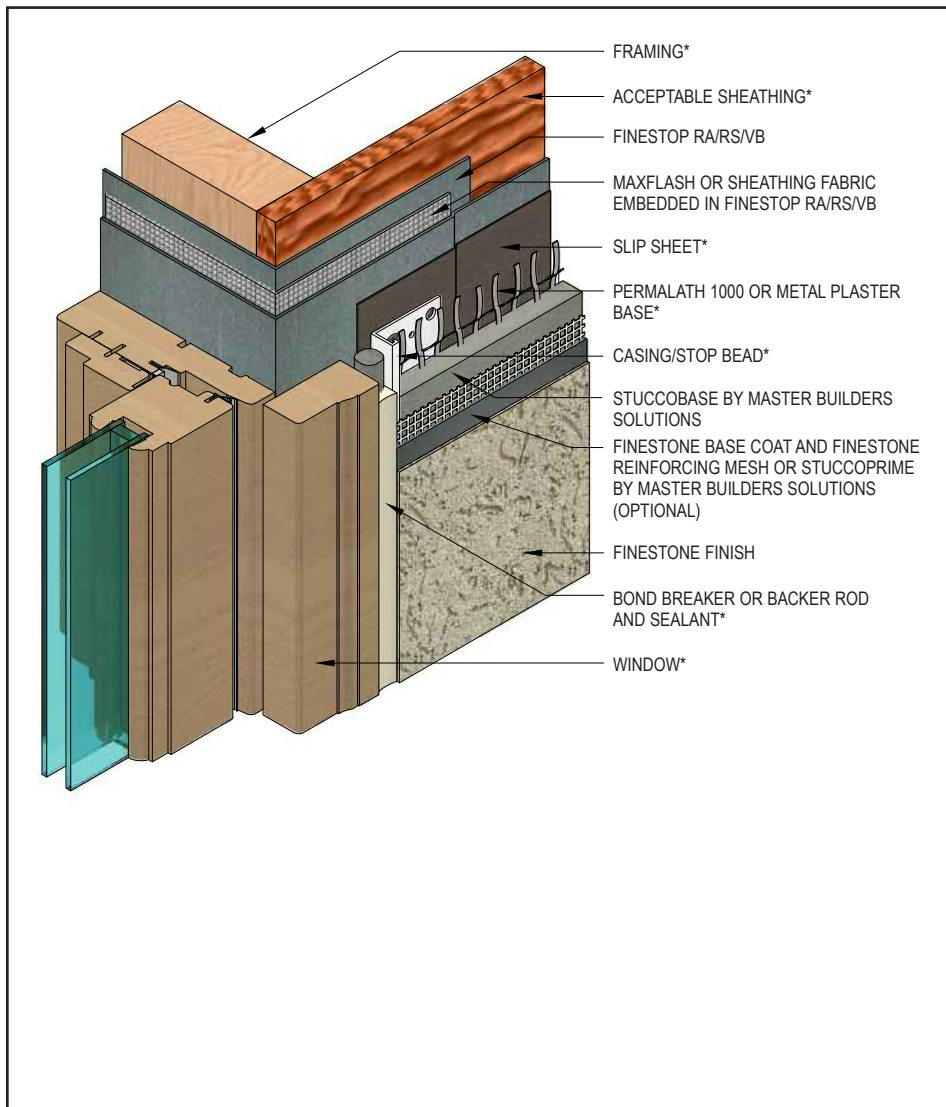
FSP-10 0821

(*NOTE: BY OTHERS)

This detail represents Master Builders Solutions Construction Systems US, LLC (hereinafter Master Builders Solutions) latest recommendations. It is presented in good faith by Master Builders Solutions. The detail is subject to change without notice. Master Builders Solutions accepts no liability for the end use of the detail. For conditions not shown, consult Master Builders Solutions for review of specific detail.

Finestone Stucco Plus Wall System

TYPICAL PRIMED WINDOW – JAMB



- Install all materials in accordance with installation instructions and applicable code.
- Ensure water-resistive barrier is properly applied into the rough openings.

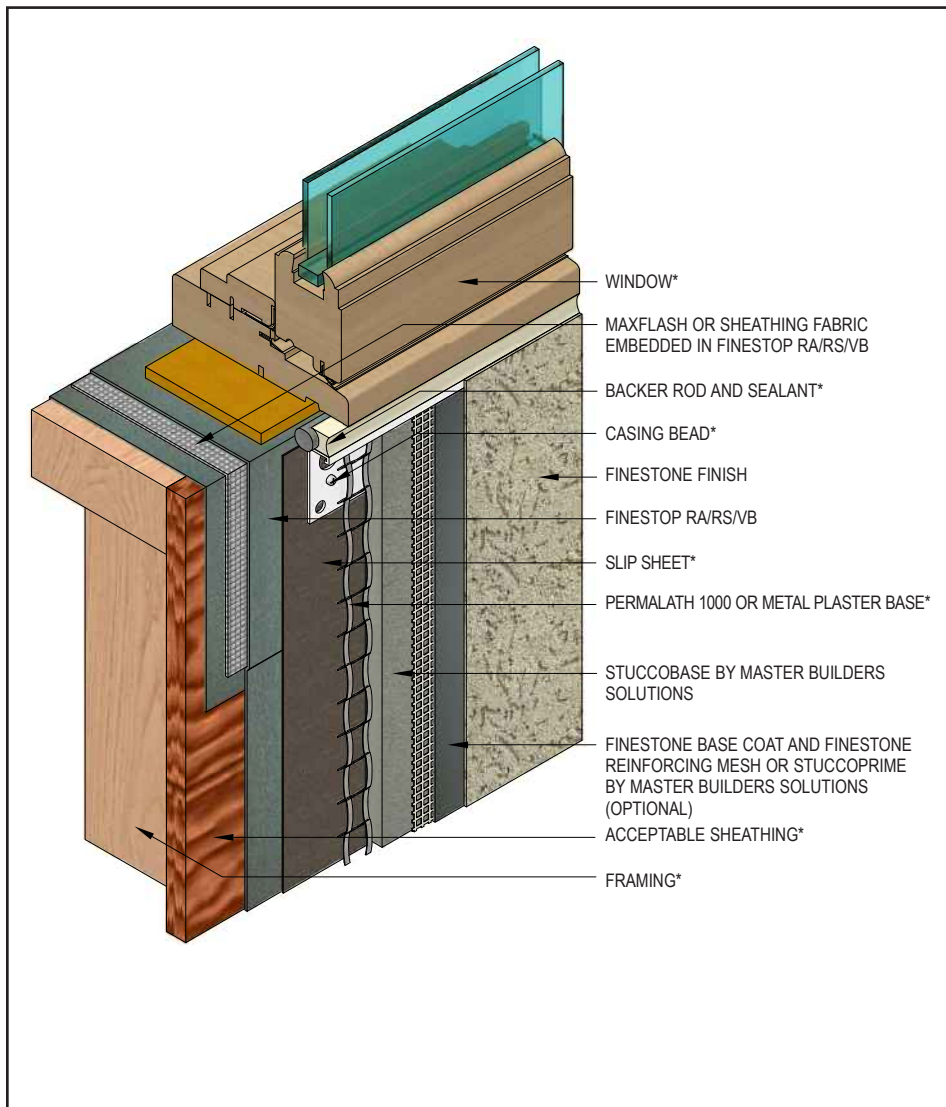
FSP-11 0821

(*NOTE: BY OTHERS)

This detail represents Master Builders Solutions Construction Systems US, LLC (hereinafter Master Builders Solutions) latest recommendations. It is presented in good faith by Master Builders Solutions. The detail is subject to change without notice. Master Builders Solutions accepts no liability for the end use of the detail. For conditions not shown, consult Master Builders Solutions for review of specific detail.

Finestone Stucco Plus Wall System

TYPICAL PRIMED WINDOW – SILL



- Install all materials in accordance with installation instructions and applicable code.
- Ensure water-resistive barrier is properly applied into the rough openings.

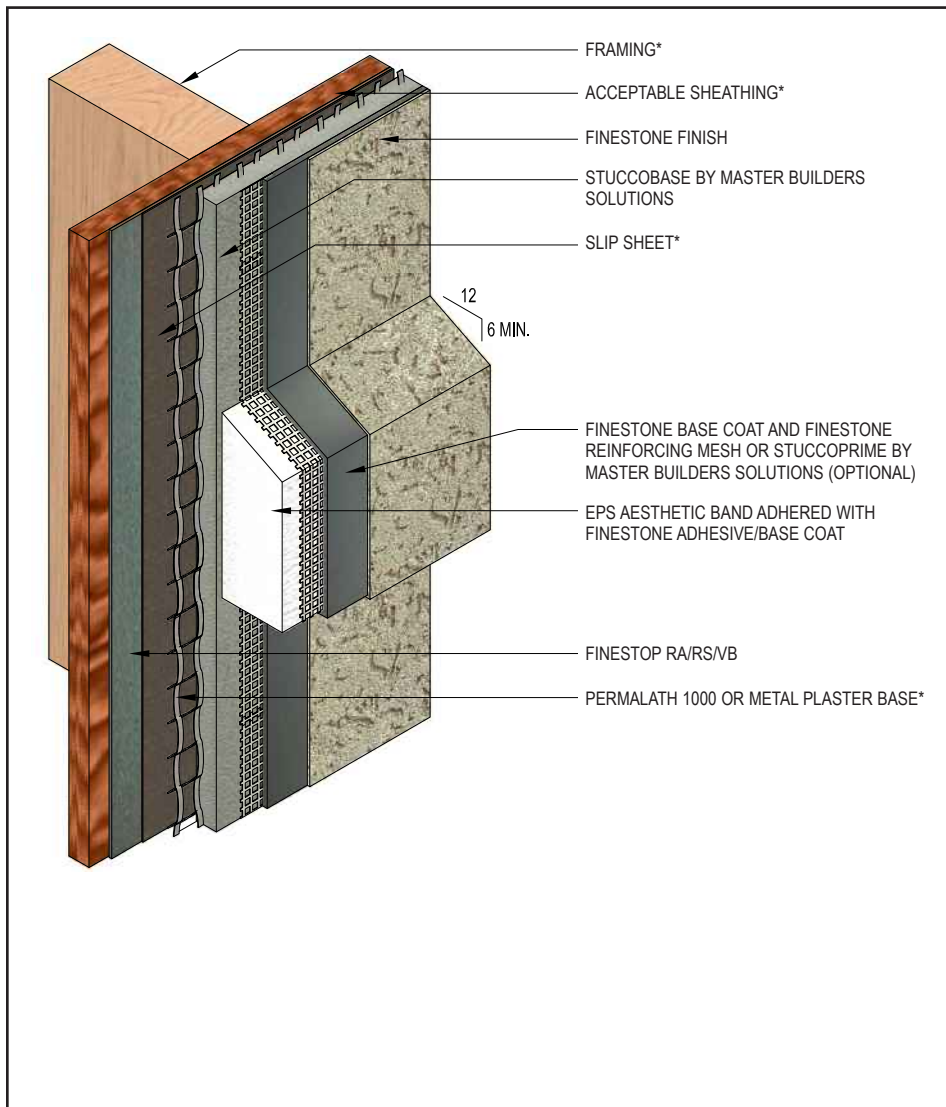
FSP-12 0821

(*NOTE: BY OTHERS)

This detail represents Master Builders Solutions Construction Systems US, LLC (hereinafter Master Builders Solutions) latest recommendations. It is presented in good faith by Master Builders Solutions. The detail is subject to change without notice. Master Builders Solutions accepts no liability for the end use of the detail. For conditions not shown, consult Master Builders Solutions for review of specific detail.

Finestone Stucco Plus Wall System

TYPICAL EPS SHAPE APPLICATION



- Install all materials in accordance with installation instructions and applicable code.
- Overlap reinforced base coat onto Master Builders Solutions StuccoBase a minimum of 3" (76 mm).
- On horizontal projections greater than 1" (25 mm) maintain a minimum 6:12 slope.

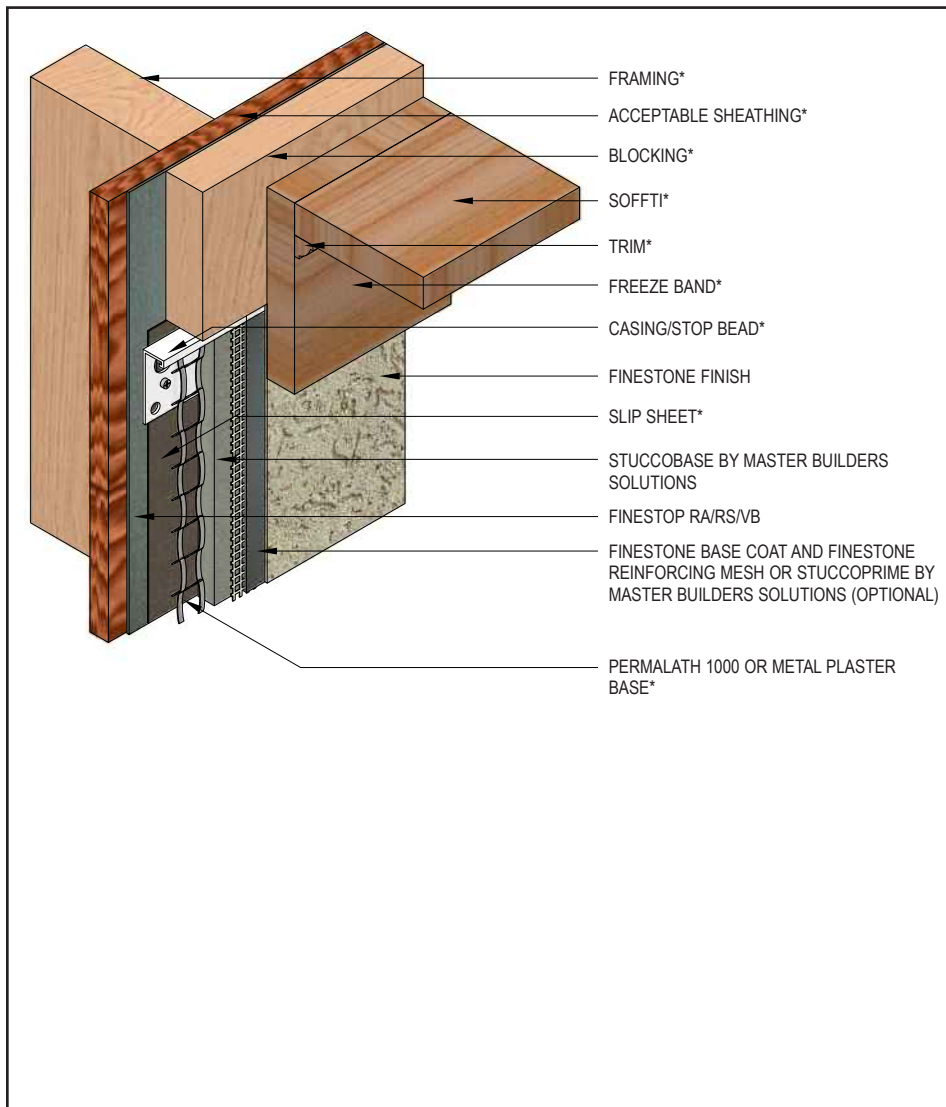
FSP-13 0821

(*NOTE: BY OTHERS)

This detail represents Master Builders Solutions Construction Systems US, LLC (hereinafter Master Builders Solutions) latest recommendations. It is presented in good faith by Master Builders Solutions. The detail is subject to change without notice. Master Builders Solutions accepts no liability for the end use of the detail. For conditions not shown, consult Master Builders Solutions for review of specific detail.

Finestone Stucco Plus Wall System

TYPICAL TERMINATION AT SOFFIT/GABLE END



- Install all materials in accordance with installation instructions and applicable code.
- Lap frieze band a minimum of 2" (50 mm) over the Finestone Stucco Plus Wall System.

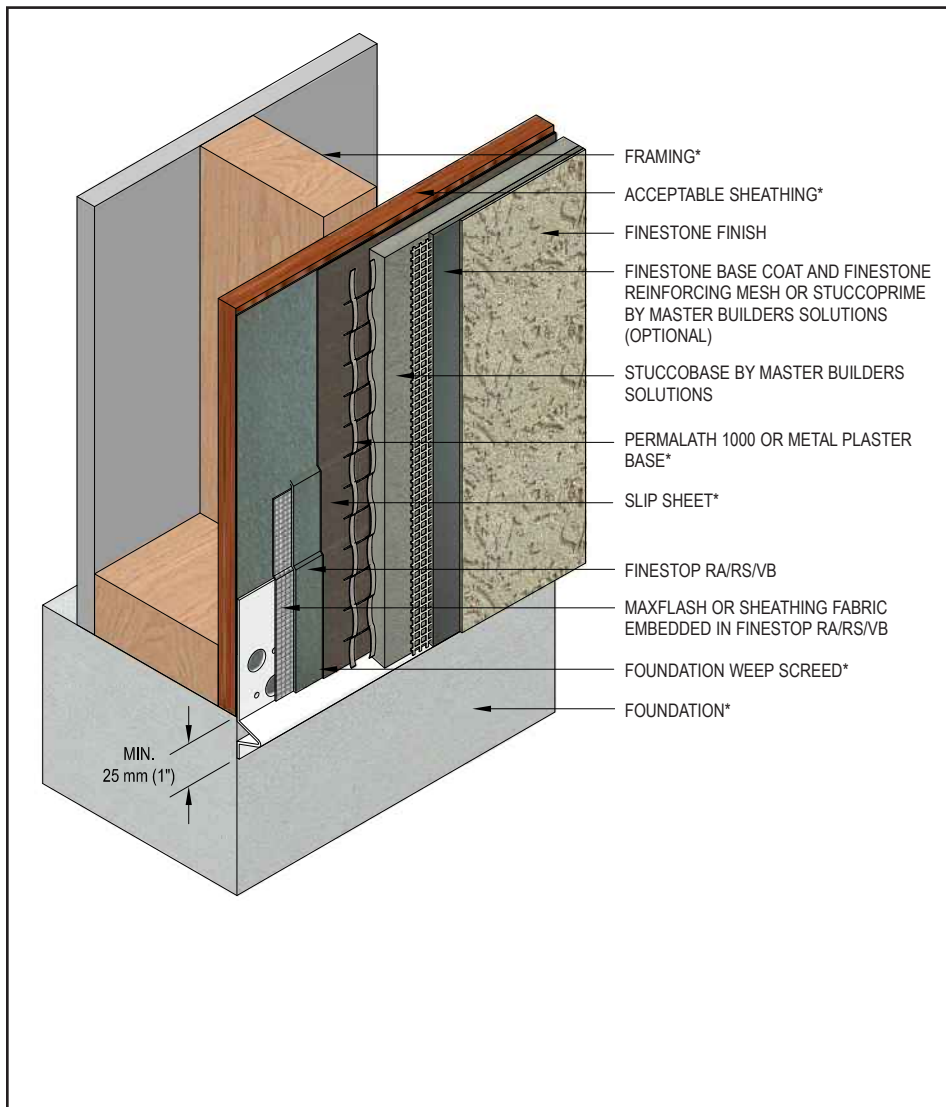
FSP-14 0821

(*NOTE: BY OTHERS)

This detail represents Master Builders Solutions Construction Systems US, LLC (hereinafter Master Builders Solutions) latest recommendations. It is presented in good faith by Master Builders Solutions. The detail is subject to change without notice. Master Builders Solutions accepts no liability for the end use of the detail. For conditions not shown, consult Master Builders Solutions for review of specific detail.

Finestone Stucco Plus Wall System

TYPICAL TERMINATION AT FOUNDATION



- Install all materials in accordance with installation instructions and applicable code.
- Per ASTM C1063 terminate the stucco wall system a minimum of 4" (100 mm) above raw earth and 2" (50 mm) above paved surface.
- Water-resistive barrier shall be installed over weep screed flange.

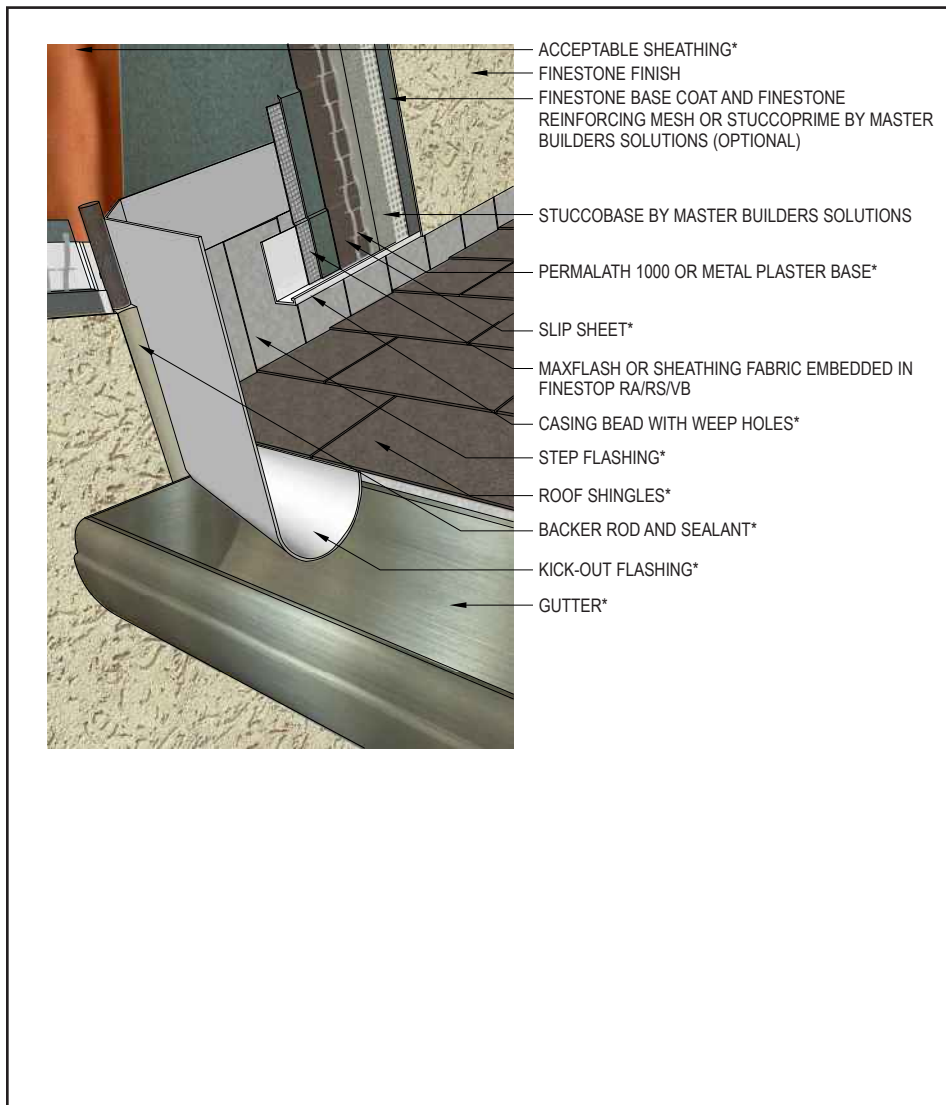
FSP-15 0821

(*NOTE: BY OTHERS)

This detail represents Master Builders Solutions Construction Systems US, LLC (hereinafter Master Builders Solutions) latest recommendations. It is presented in good faith by Master Builders Solutions. The detail is subject to change without notice. Master Builders Solutions accepts no liability for the end use of the detail. For conditions not shown, consult Master Builders Solutions for review of specific detail.

Finestone Stucco Plus Wall System

TYPICAL KICK-OUT FLASHING



- Install all materials in accordance with installation instructions and applicable code.
- Terminate stucco wall system a minimum of 2" (50 mm) above roof.
- Ensure step flashing is a minimum 2" (50 mm) behind Finestone Stucco Plus Wall System.
- Kick-out flashing a minimum 4" (100 mm) in height.
- Kick-out flashing shall be angled a minimum 100° with seams sealed or soldered.
- Ensure a means for drainage is provided at system termination at roof.

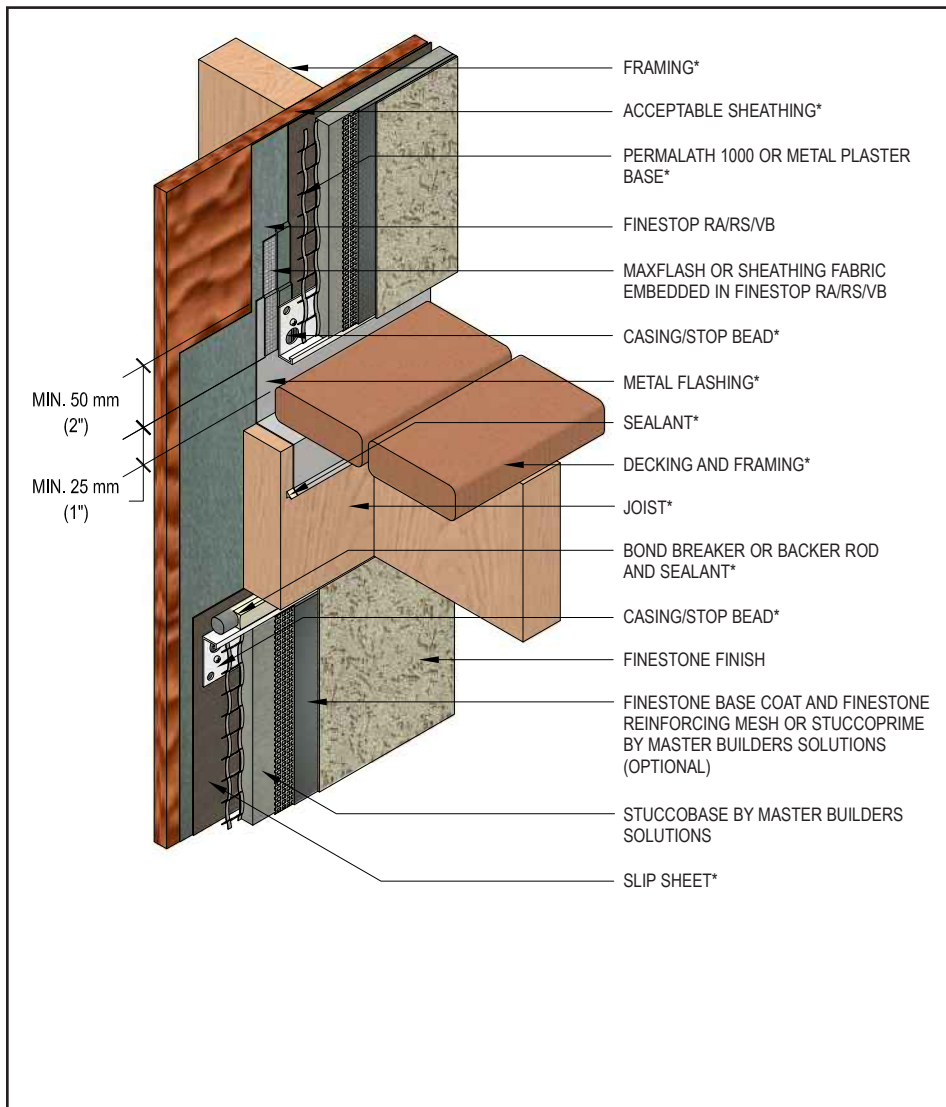
FSP-16 0821

(*NOTE: BY OTHERS)

This detail represents Master Builders Solutions Construction Systems US, LLC (hereinafter Master Builders Solutions) latest recommendations. It is presented in good faith by Master Builders Solutions. The detail is subject to change without notice. Master Builders Solutions accepts no liability for the end use of the detail. For conditions not shown, consult Master Builders Solutions for review of specific detail.

Finestone Stucco Plus Wall System

TYPICAL TERMINATION AT DECK



- Install all materials in accordance with installation instructions and applicable code.
- Water-resistive barrier shall be installed over flashing.
- Water-resistive barrier shall be installed up and behind metal flashing before terminating.
- Provide end-dams at flashing terminations as required.

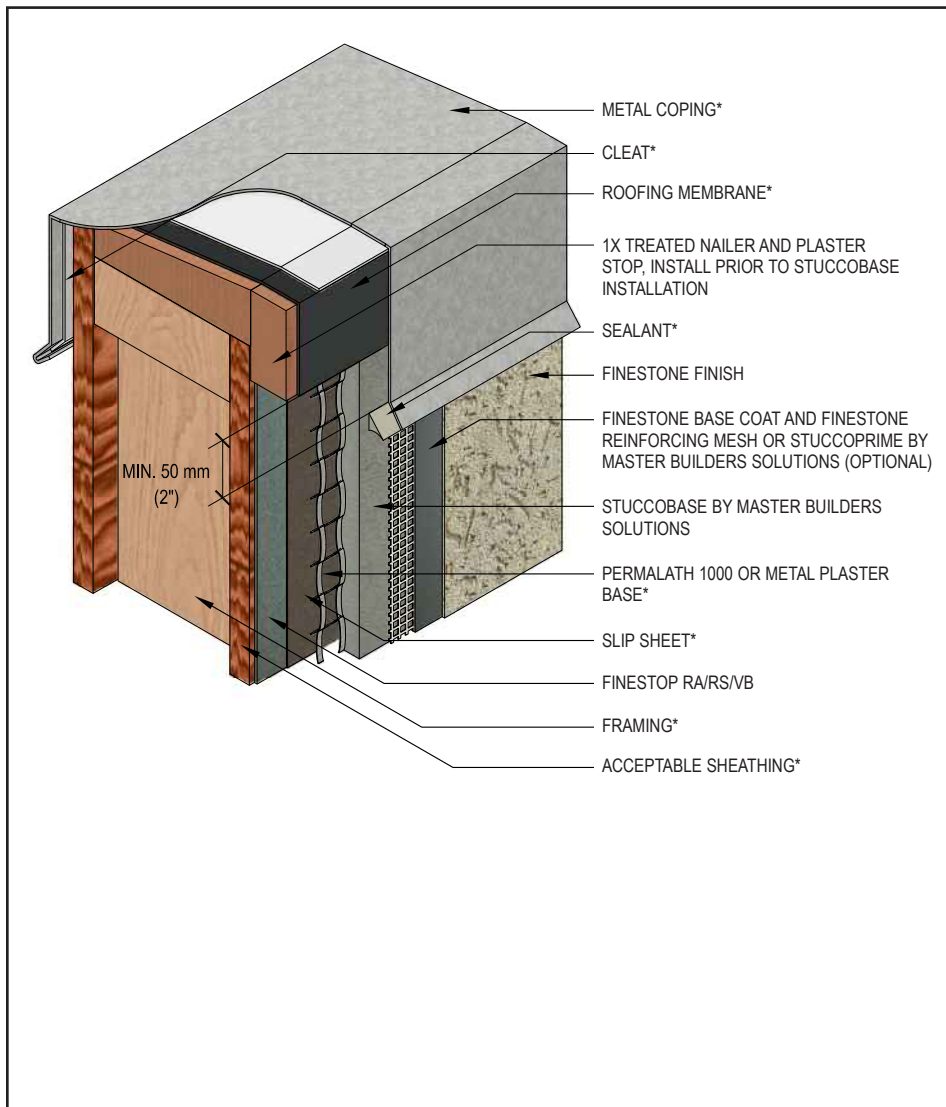
FSP-17 0821

(*NOTE: BY OTHERS)

This detail represents Master Builders Solutions Construction Systems US, LLC (hereinafter Master Builders Solutions) latest recommendations. It is presented in good faith by Master Builders Solutions. The detail is subject to change without notice. Master Builders Solutions accepts no liability for the end use of the detail. For conditions not shown, consult Master Builders Solutions for review of specific detail.

Finestone Stucco Plus Wall System

TYPICAL COPING



- Install all materials in accordance with installation instructions and applicable code.
- Extend coping a minimum of 2" (50 mm) on to face of Finestone Stucco Plus Wall System and seal drip edge.
- Water-resistive barrier shall be installed up and over the top and extended down the other side.

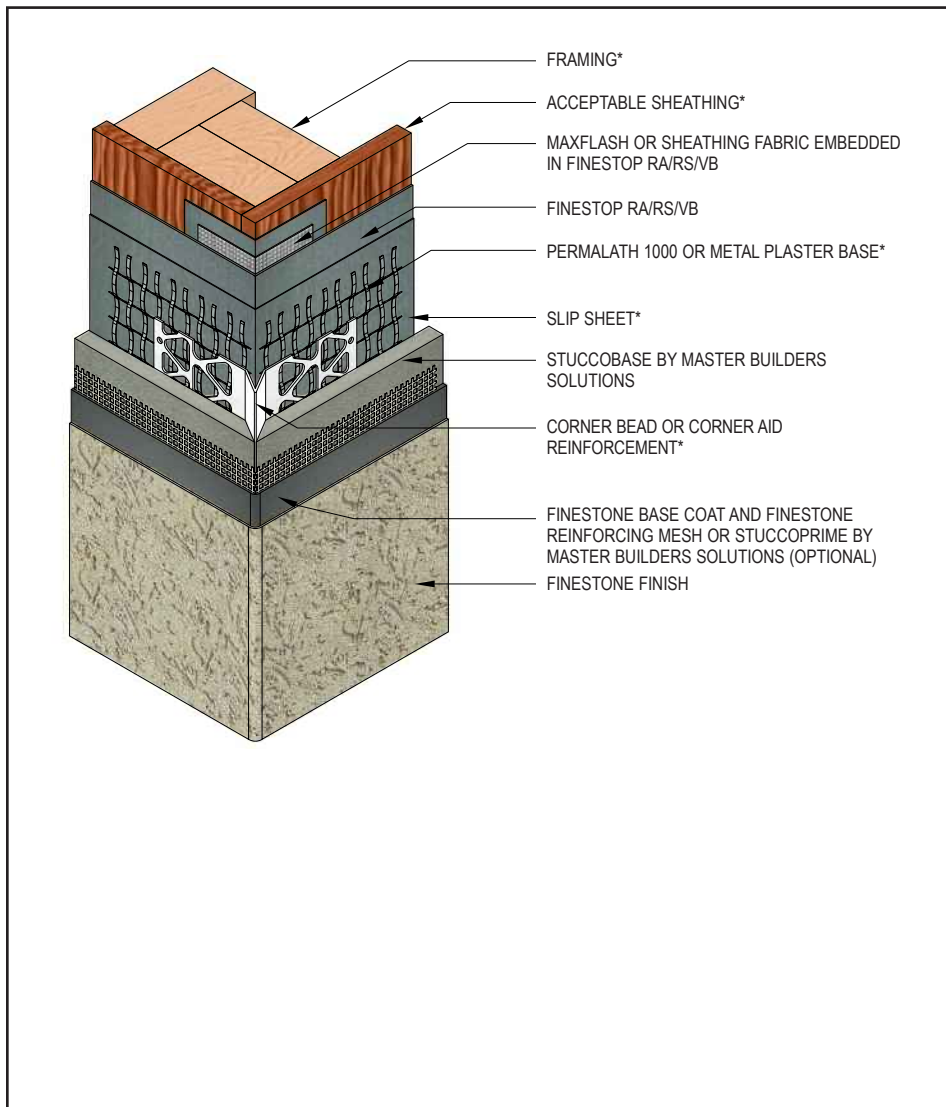
FSP-18 0821

(*NOTE: BY OTHERS)

This detail represents Master Builders Solutions Construction Systems US, LLC (hereinafter Master Builders Solutions) latest recommendations. It is presented in good faith by Master Builders Solutions. The detail is subject to change without notice. Master Builders Solutions accepts no liability for the end use of the detail. For conditions not shown, consult Master Builders Solutions for review of specific detail.

Finestone Stucco Plus Wall System

TYPICAL CORNER BEAD



- Install all materials in accordance with installation instructions and applicable code.
- Attach corner bead over plaster base.
- Water-resistive barrier shall be installed continuous around corner a minimum of 12" (305 mm).
- Corner bead shall be filled solid with Master Builders Solutions StuccoBase, as required.

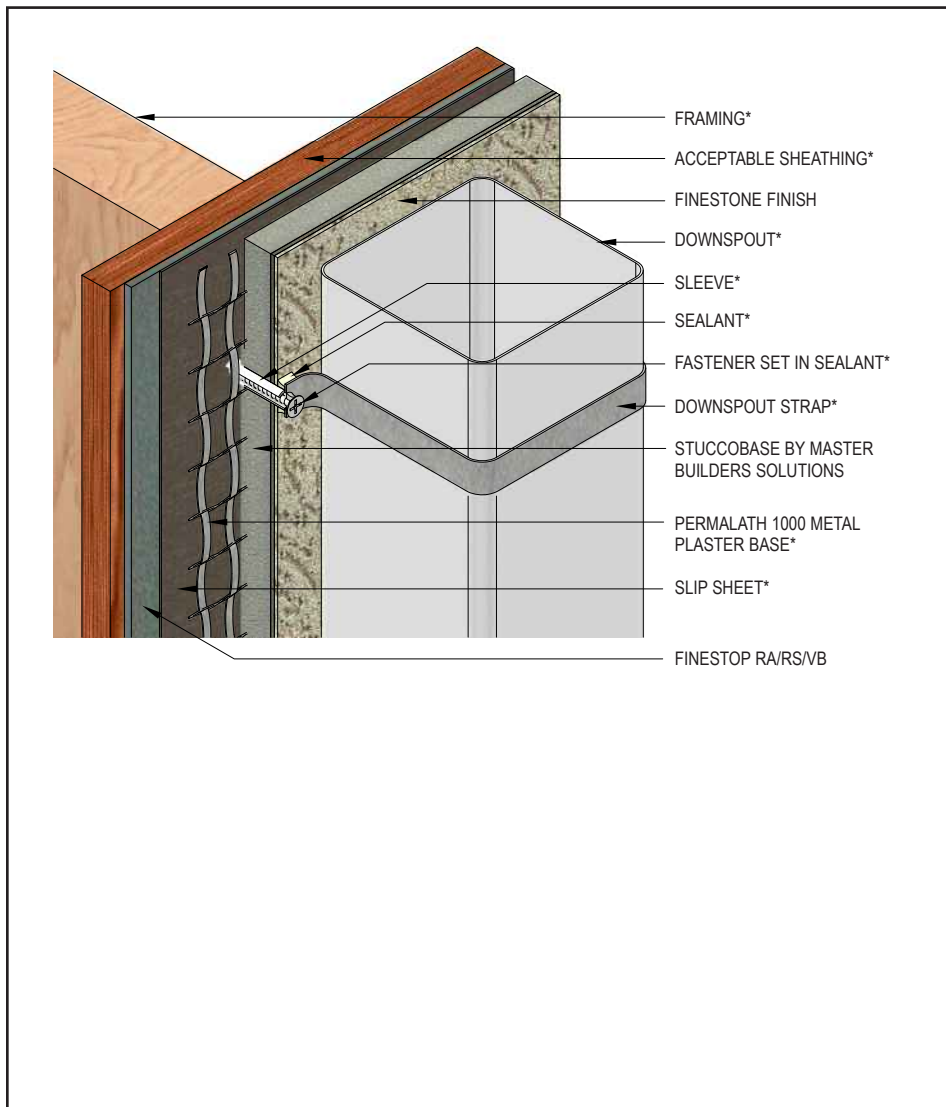
FSP-19 0821

(*NOTE: BY OTHERS)

This detail represents Master Builders Solutions Construction Systems US, LLC (hereinafter Master Builders Solutions) latest recommendations. It is presented in good faith by Master Builders Solutions. The detail is subject to change without notice. Master Builders Solutions accepts no liability for the end use of the detail. For conditions not shown, consult Master Builders Solutions for review of specific detail.

Finestone Stucco Plus Wall System

TYPICAL DOWNSPOUT APPLICATION



- Install all materials in accordance with installation instructions and applicable code.
- Properly seal all penetrations through the stucco wall system.

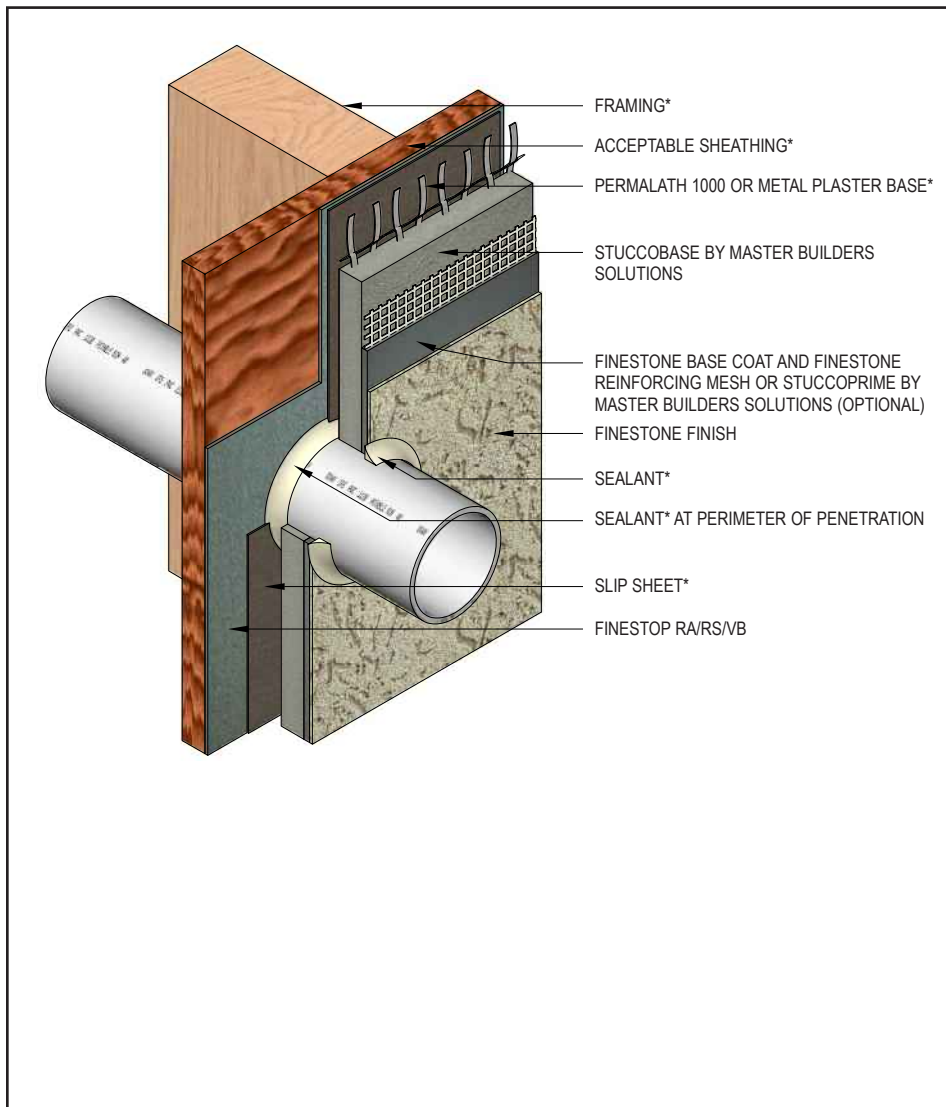
FSP-20 0821

(*NOTE: BY OTHERS)

This detail represents Master Builders Solutions Construction Systems US, LLC (hereinafter Master Builders Solutions) latest recommendations. It is presented in good faith by Master Builders Solutions. The detail is subject to change without notice. Master Builders Solutions accepts no liability for the end use of the detail. For conditions not shown, consult Master Builders Solutions for review of specific detail.

Finestone Stucco Plus Wall System

TYPICAL PIPE PENETRATION



- Install all materials in accordance with installation instructions and applicable code.
- Properly seal all penetrations through the stucco wall system.

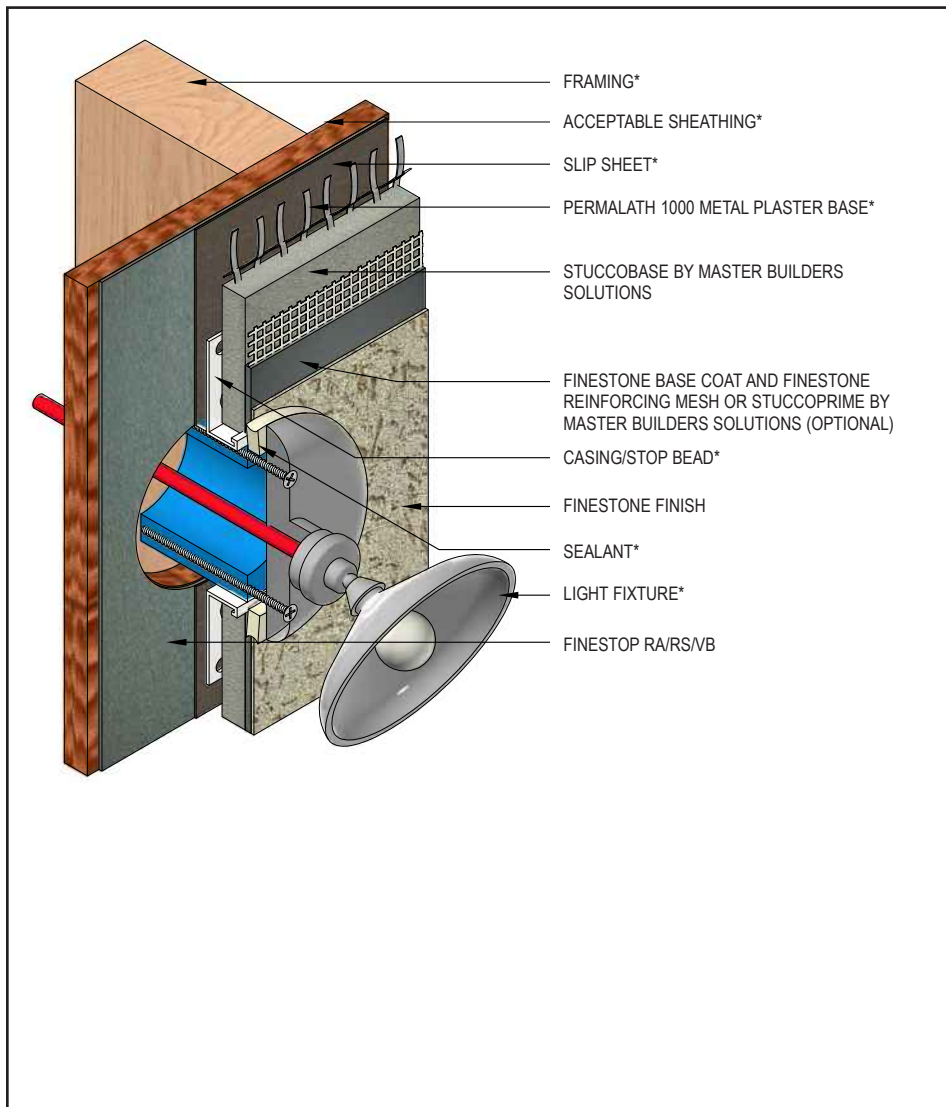
FSP-21 0821

(*NOTE: BY OTHERS)

This detail represents Master Builders Solutions Construction Systems US, LLC (hereinafter Master Builders Solutions) latest recommendations. It is presented in good faith by Master Builders Solutions. The detail is subject to change without notice. Master Builders Solutions accepts no liability for the end use of the detail. For conditions not shown, consult Master Builders Solutions for review of specific detail.

Finestone Stucco Plus Wall System

TYPICAL LIGHT FIXTURE



- Install all materials in accordance with installation instructions and applicable code.
- Properly seal all penetrations through the stucco wall system.

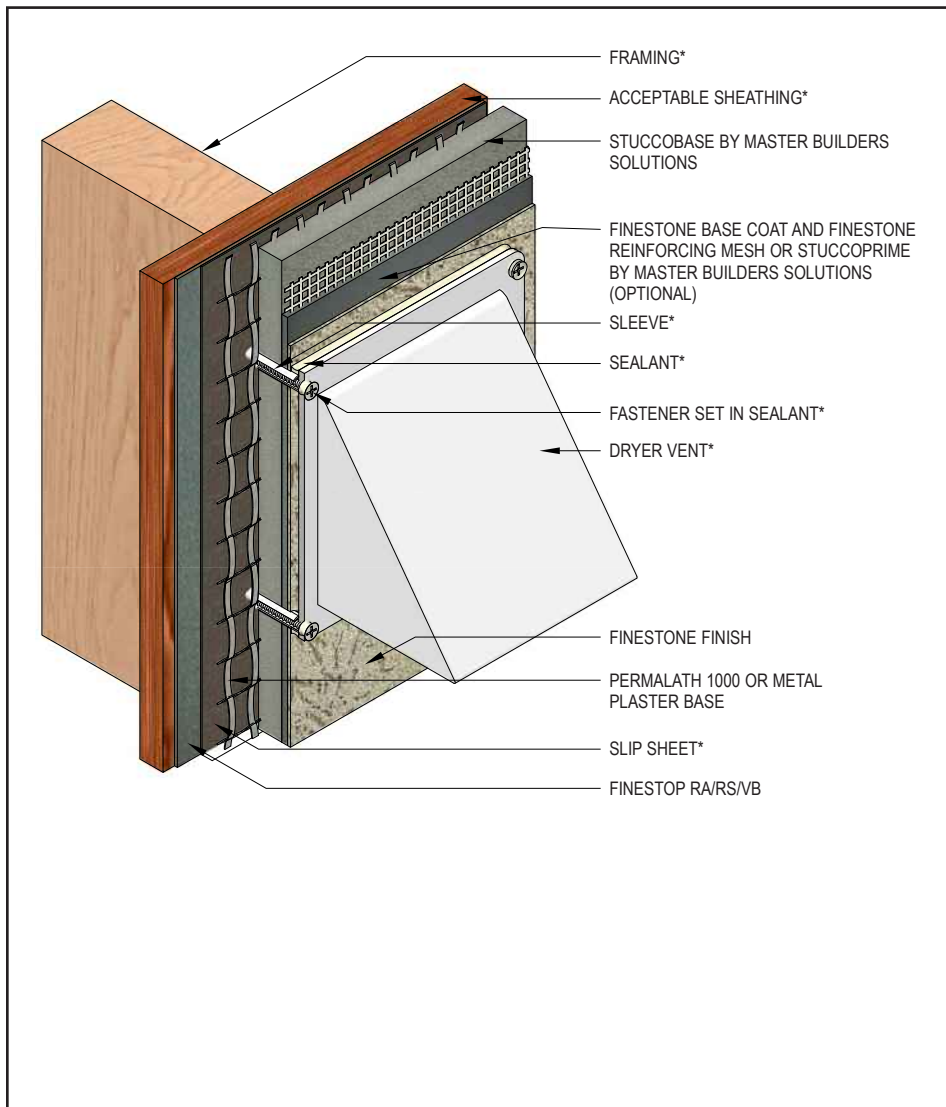
FSP-22 0821

(*NOTE: BY OTHERS)

This detail represents Master Builders Solutions Construction Systems US, LLC (hereinafter Master Builders Solutions) latest recommendations. It is presented in good faith by Master Builders Solutions. The detail is subject to change without notice. Master Builders Solutions accepts no liability for the end use of the detail. For conditions not shown, consult Master Builders Solutions for review of specific detail.

Finestone Stucco Plus Wall System

TYPICAL DRYER VENT



- Install all materials in accordance with installation instructions and applicable code.
- Properly seal all penetrations through the stucco wall system.

FSP-23 0821

(*NOTE: BY OTHERS)

This detail represents Master Builders Solutions Construction Systems US, LLC (hereinafter Master Builders Solutions) latest recommendations. It is presented in good faith by Master Builders Solutions. The detail is subject to change without notice. Master Builders Solutions accepts no liability for the end use of the detail. For conditions not shown, consult Master Builders Solutions for review of specific detail.

Warranty

Master Builders Solutions Construction Systems US, LLC ("Master Builders") warrants this product to be free from manufacturing defects and to meet the technical properties on the current Technical Data Guide, if used as directed within shelf life. Satisfactory results depend not only on quality products but also upon many factors beyond our control. Master Builders MAKES NO OTHER WARRANTY OR GUARANTEE, EXPRESS OR IMPLIED, INCLUDING WARRANTIES OF MERCHANTABILITY OR FITNESS FOR A PARTICULAR PURPOSE WITH RESPECT TO ITS PRODUCTS. The sole and exclusive remedy of Purchaser for any claim concerning this product, including but not limited to, claims alleging breach of warranty, negligence, strict liability or otherwise, is shipment to purchaser of product equal to the amount of product that fails to meet this warranty or refund of the original purchase price of product that fails to meet this warranty, at the sole option of Master Builders. Any claims concerning this product must be received in writing within one (1) year from the date of shipment and any claims not presented within that period are waived by Purchaser. Master Builders WILL NOT BE RESPONSIBLE FOR ANY SPECIAL, INCIDENTAL, CONSEQUENTIAL (INCLUDING LOST PROFITS) OR PUNITIVE DAMAGES OF ANY KIND.

Purchaser must determine the suitability of the products for the intended use and assumes all risks and liabilities in connection therewith. This information and all further technical advice are based on Master Builders' present knowledge and experience. However, Master Builders assumes no liability for providing such information and advice including the extent to which such information and advice may relate to existing third party intellectual property rights, especially patent rights, nor shall any legal relationship be created by or arise from the provision of such information and advice. Master Builders reserves the right to make any changes according to technological progress or further developments. The Purchaser of the Product(s) must test the product(s) for suitability for the intended application and purpose before proceeding with a full application of the product(s). Performance of the product described herein should be verified by testing and carried out by qualified experts.

For professional use only. Not for sale to or use by the general public.

For the most current version of this literature, please visit our website at finestone.master-builders-solutions.com/en.

Master Builders Solutions Construction Systems US, LLC

889 Valley Park Drive, Shakopee, MN 55379
finestone.master-builders-solutions.com/en

Customer Service +1 (800) 433-9517
Technical Service +1 (800) 589-1336