

Pebbletex Secondary Weather Barrier

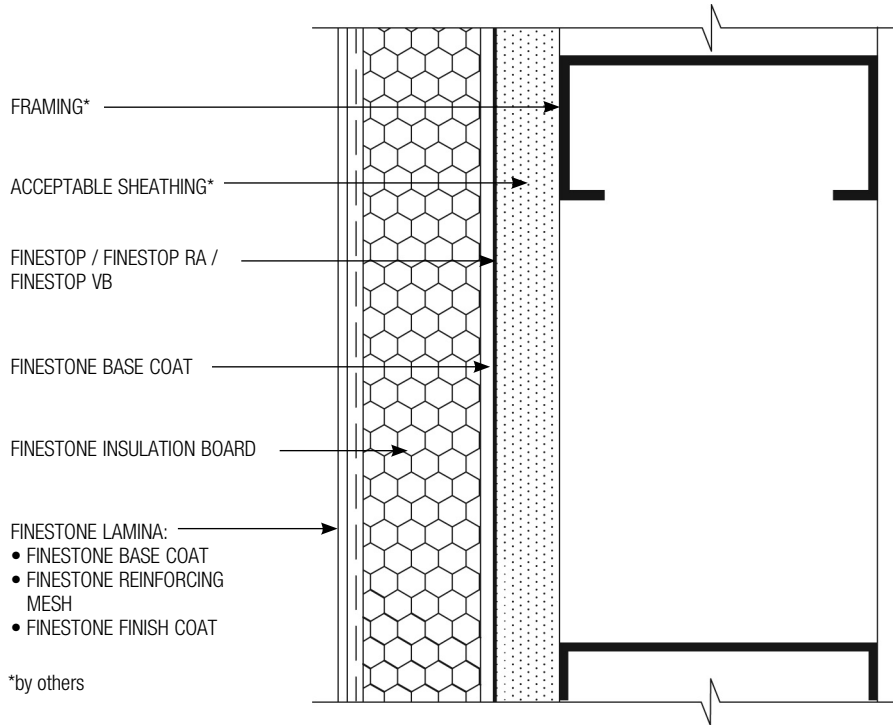
Typical Details

(THIS PAGE IS INTENTIONALLY LEFT BLANK)

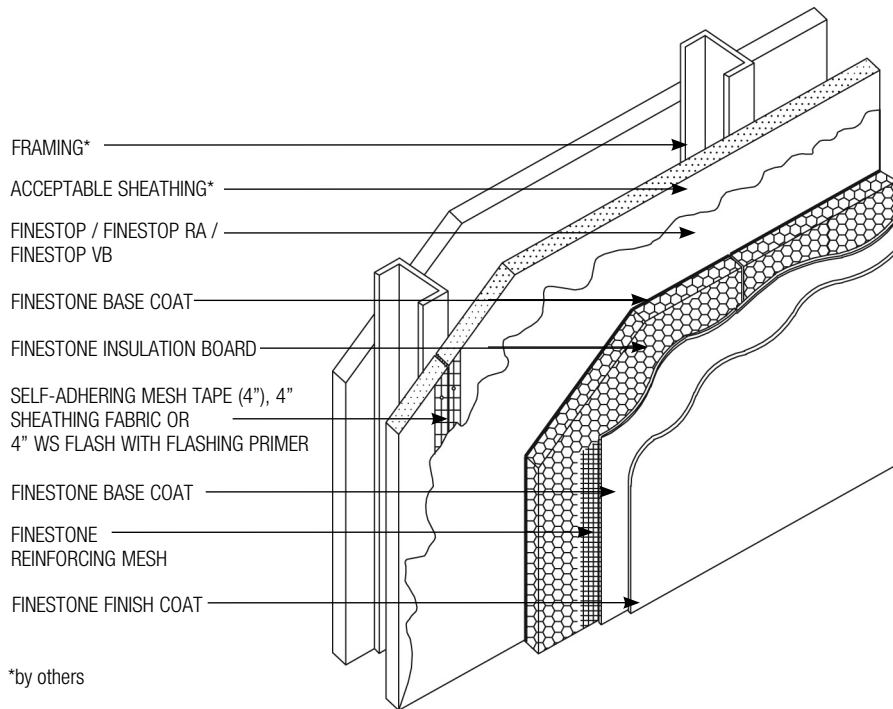
Pebbletex Secondary Weather Barrier

TABLE OF CONTENTS

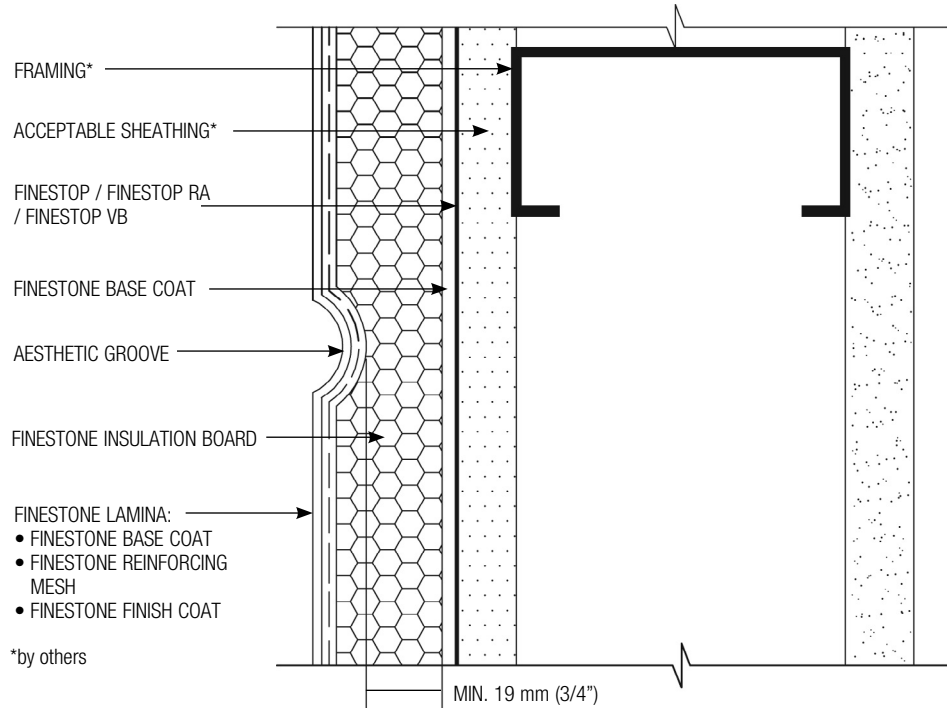
1. Pebbletex Secondary Weather Barrier Design Application (Plan View)
2. Pebbletex Secondary Weather Barrier Design Application (Isometric View)
3. Aesthetic Groove (Plan View)
4. Insulation Boards/Reinforcing Mesh Application at Openings
5. Window Head (Flush)
6. Window Head (Recessed)
7. Window Jamb Detail (Flush, Plan View)
8. Window Jamb Detail (Recessed, Plan View)
9. Window Sill Detail (Flush)
10. Window Sill Detail (Recessed)
11. Roof Edge FLASHING* Detail
12. Metal Coping Detail
13. Parapet Cap Detail
14. Expansion Joint Detail at Floorline
15. Expansion Joint at Change in Substrate
16. Termination at Soffit/Gable End
17. Expansion Joint Detail (Plan View)
18. Pipe Penetration
19. Corner Mesh Application with Strong 15 or Hi-Impact 20 (Plan View)
20. Corner Mesh Application with Standard Mesh, Intermediate 6 or 12 (Plan View)
21. Light Fixture
22. Termination at Foundation
23. Termination at Foundation (Flush)
24. Kick-out FLASHING* Detail



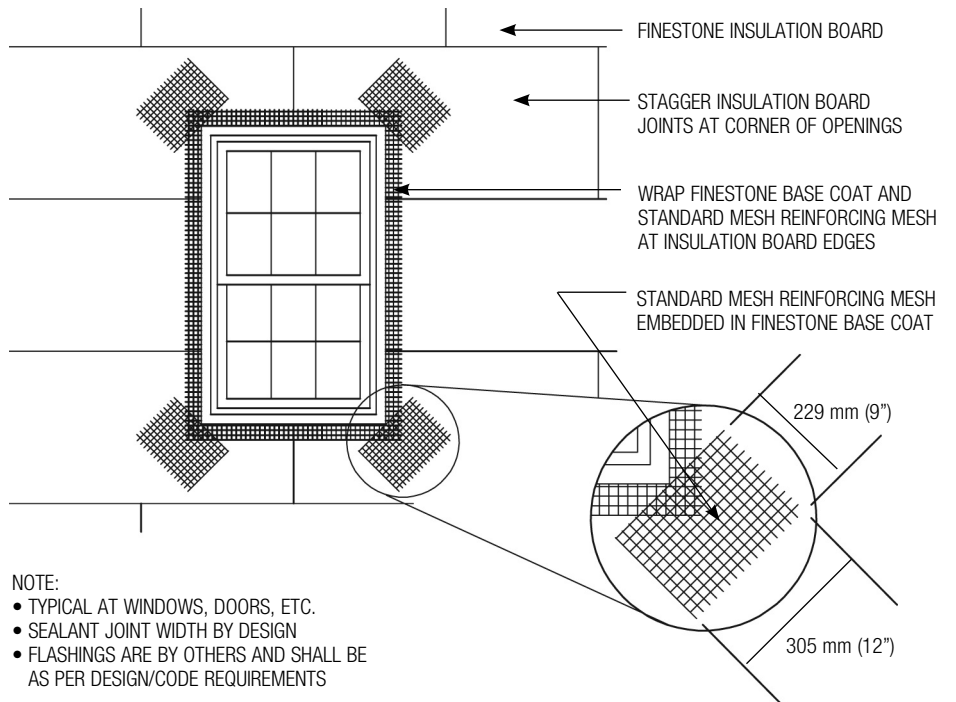
SWB-01 TYPICAL PEBBLETEX SECONDARY WEATHER BARRIER DESIGN APPLICATION (PLAN VIEW)



SWB-02 TYPICAL PEBBLETEX SECONDARY WEATHER BARRIER DESIGN APPLICATION (ISOMETRIC VIEW)

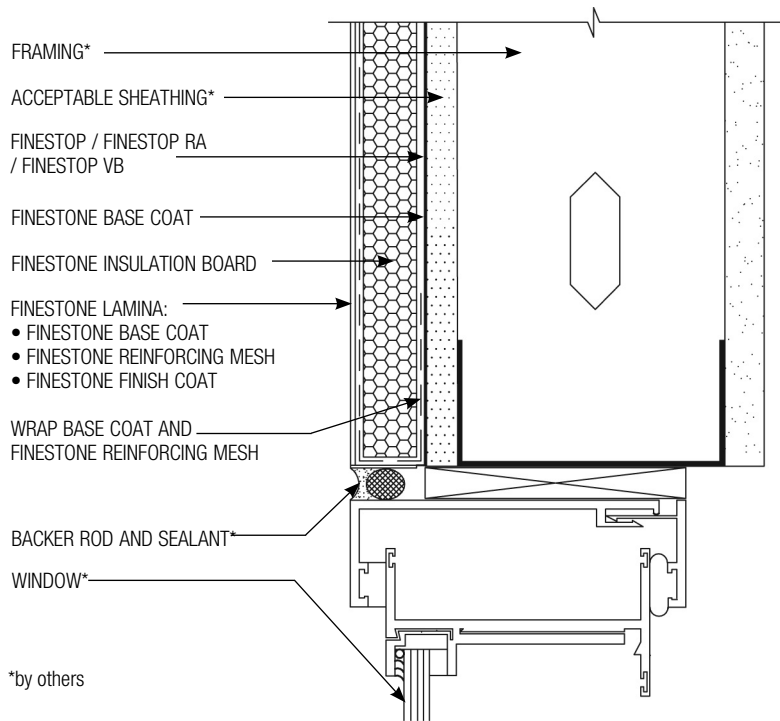


SWB-03 TYPICAL AESTHETIC GROOVE (PLAN VIEW)

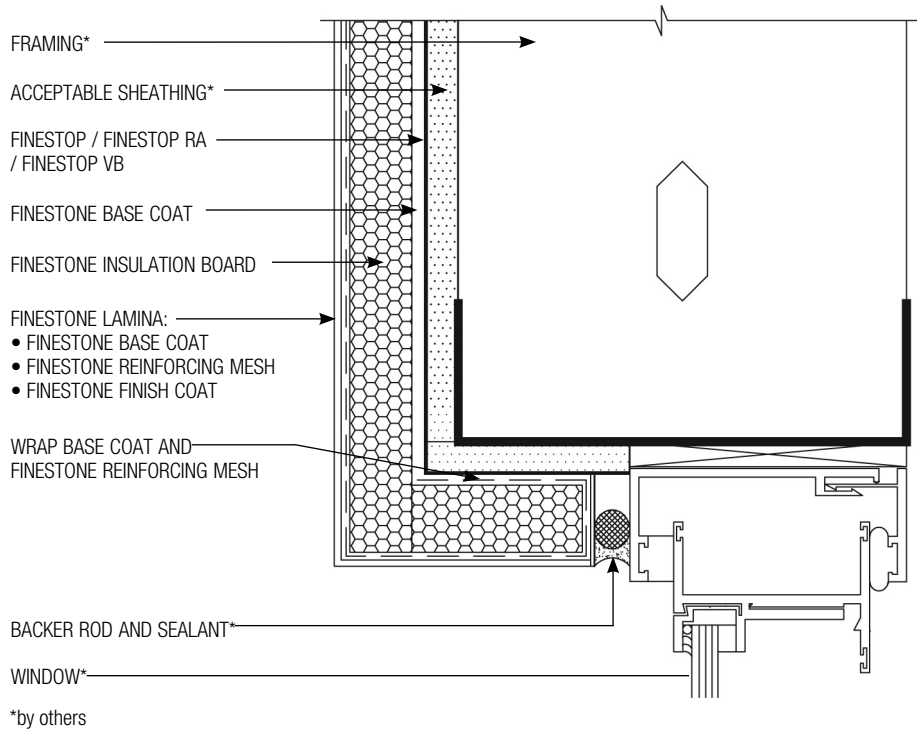


*by others

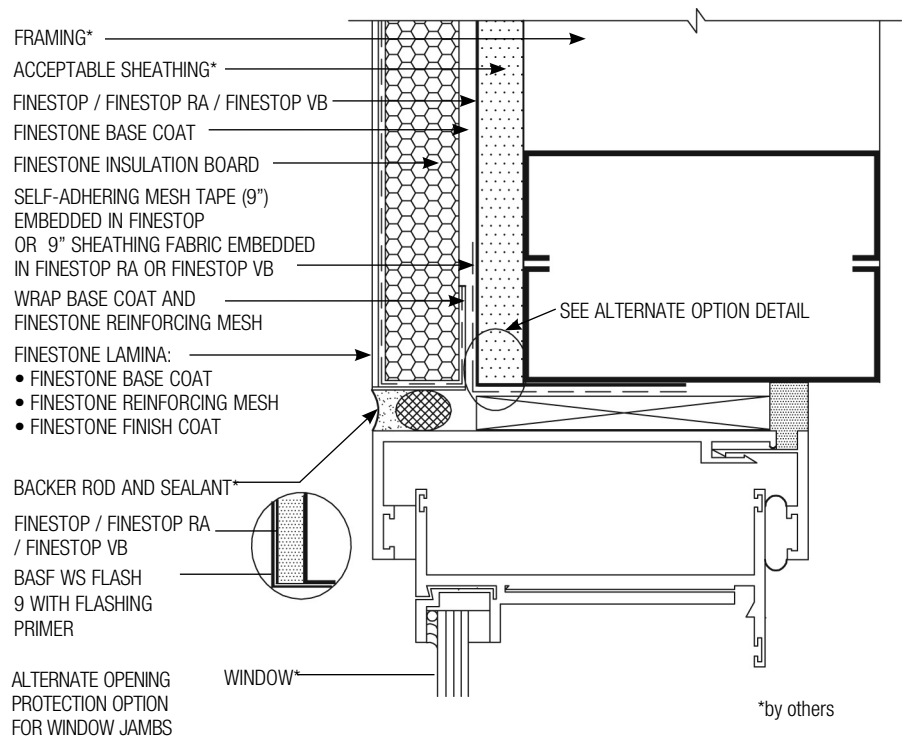
SWB-04 TYPICAL INSULATION BOARDS/REINFORCING MESH APPLICATION AT OPENINGS



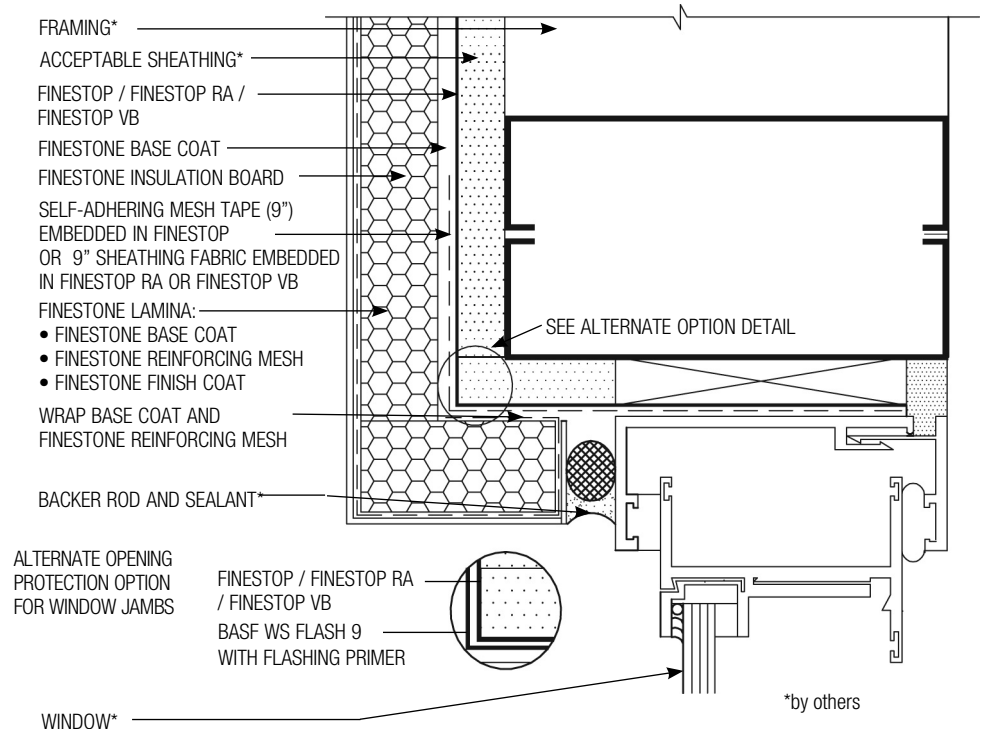
SWB-05 TYPICAL WINDOW HEAD (FLUSH)



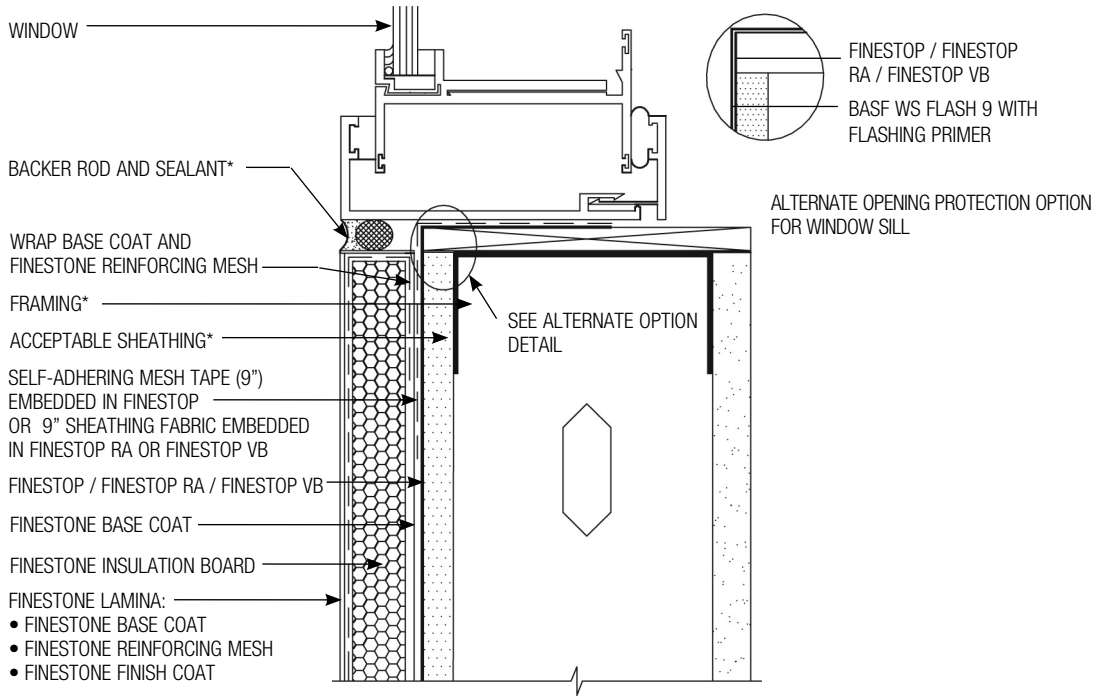
SWB-06 TYPICAL WINDOW HEAD (RECESSED)



SWB-07 TYPICAL WINDOW JAMB DETAIL (FLUSH, PLAN VIEW)

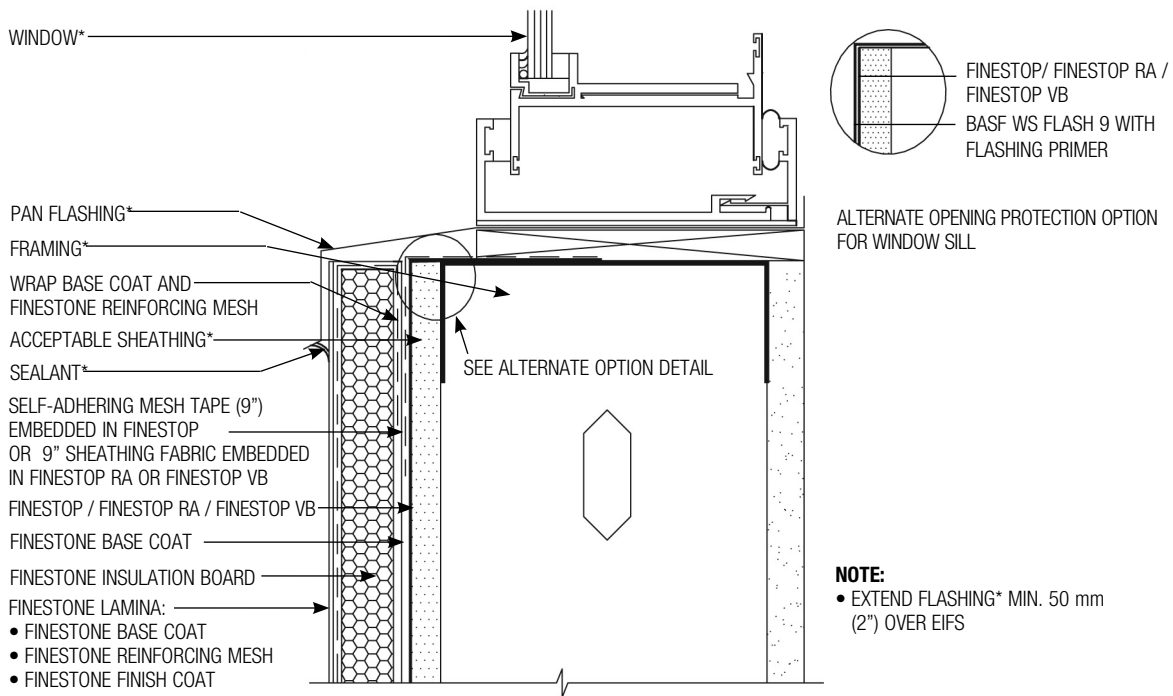


SWB-08 TYPICAL WINDOW JAMB DETAIL (RECESSED, PLAN VIEW)



*by others

SWB-09 TYPICAL WINDOW SILL DETAIL (FLUSH)

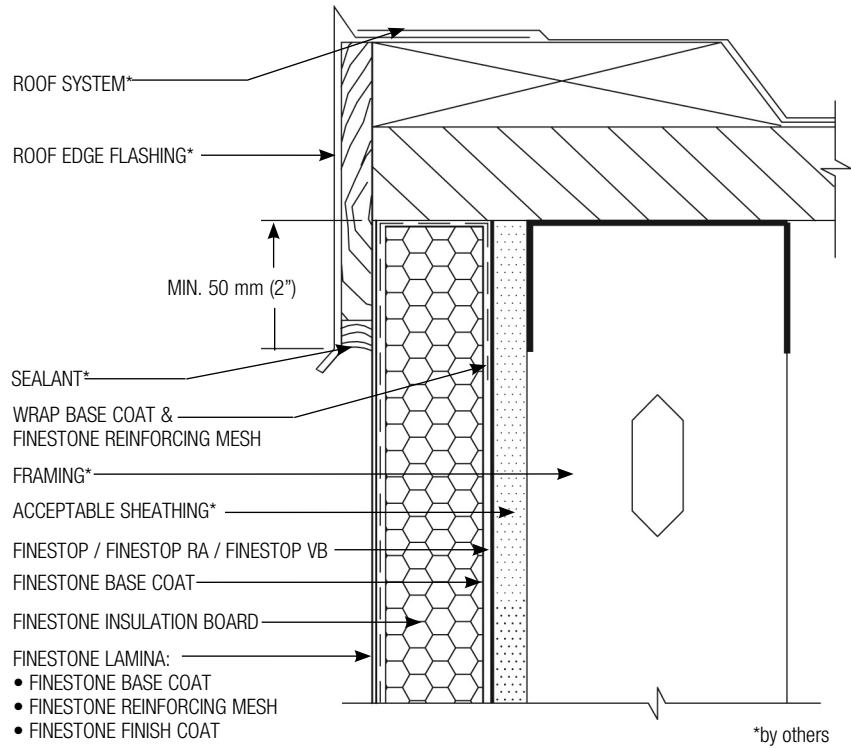


*by others

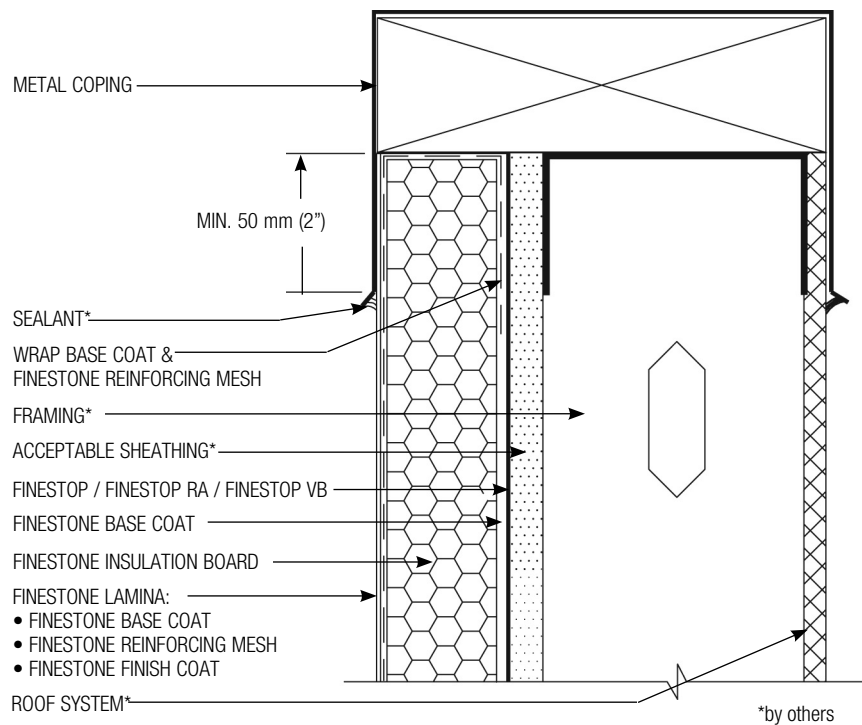
NOTE:

- EXTEND FLASHING* MIN. 50 mm (2") OVER EIFS

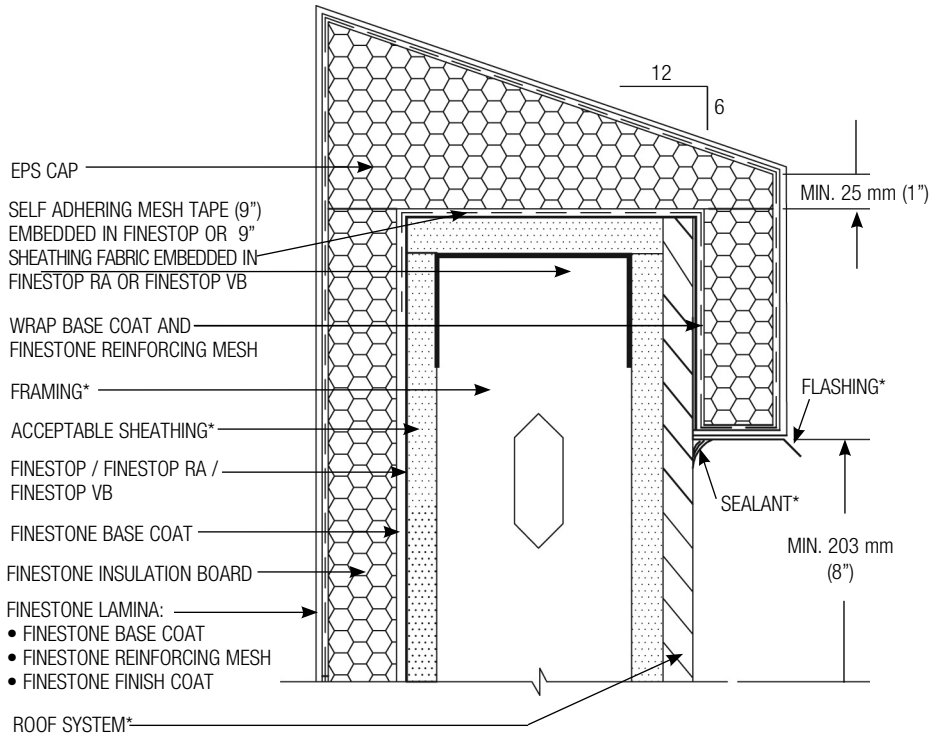
SWB-10 TYPICAL WINDOW SILL DETAIL (RECESSED)



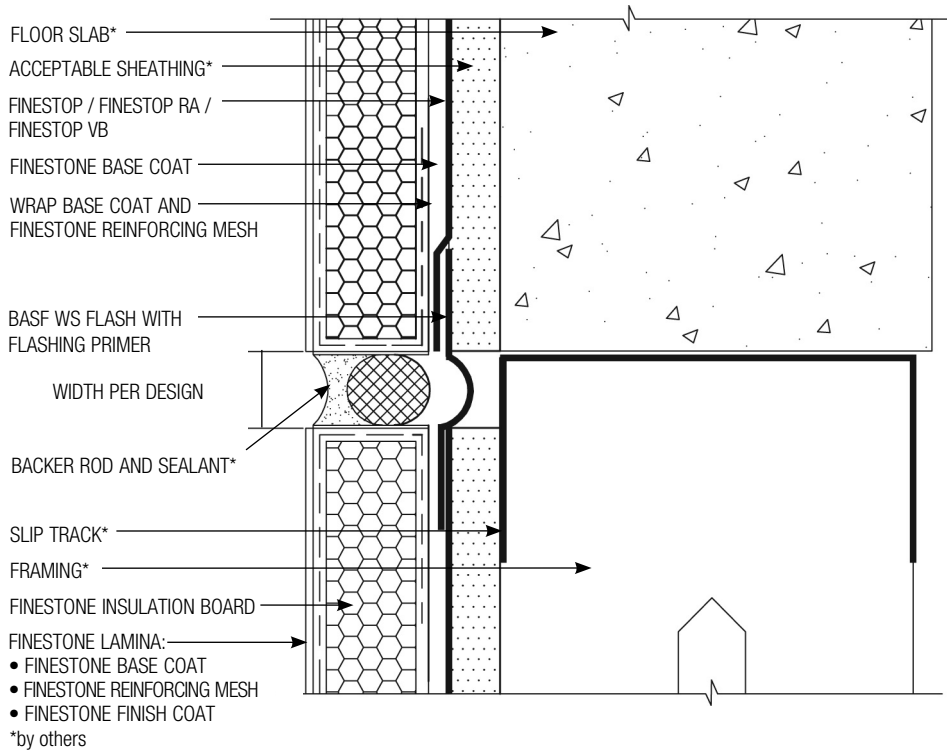
SWB-11 TYPICAL ROOF EDGE FLASHING* DETAIL



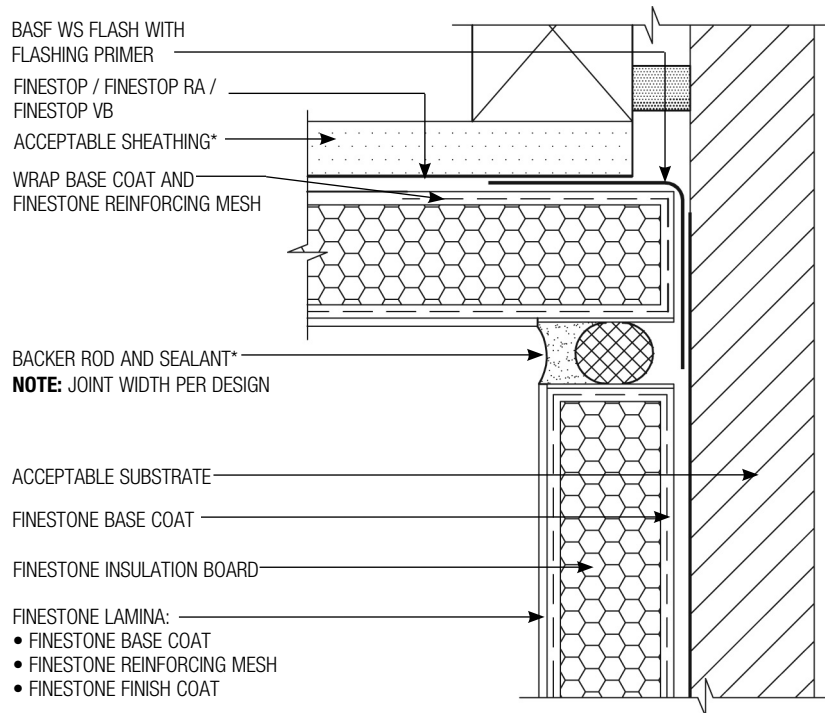
SWB-12 TYPICAL METAL COPING DETAIL



SWB-13 TYPICAL PARAPET CAP DETAIL



SWB-14 TYPICAL EXPANSION JOINT DETAIL AT FLOORLINE



BASF WS FLASH WITH FLASHING PRIMER

FINESTOP / FINESTOP RA / FINESTOP VB

ACCEPTABLE SHEATHING*

WRAP BASE COAT AND FINESTONE REINFORCING MESH

BACKER ROD AND SEALANT*

NOTE: JOINT WIDTH PER DESIGN

ACCEPTABLE SUBSTRATE

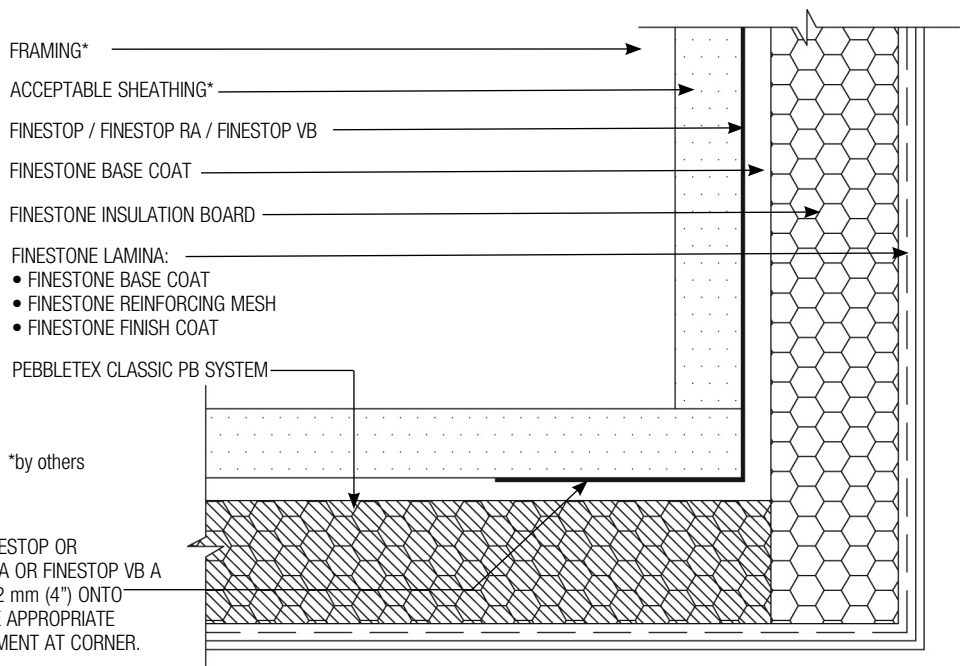
FINESTONE BASE COAT

FINESTONE INSULATION BOARD

FINESTONE LAMINA:
 • FINESTONE BASE COAT
 • FINESTONE REINFORCING MESH
 • FINESTONE FINISH COAT

*by others

SWB-15 TYPICAL EXPANSION JOINT AT CHANGE IN SUBSTRATE



FRAMING*

ACCEPTABLE SHEATHING*

FINESTOP / FINESTOP RA / FINESTOP VB

FINESTONE BASE COAT

FINESTONE INSULATION BOARD

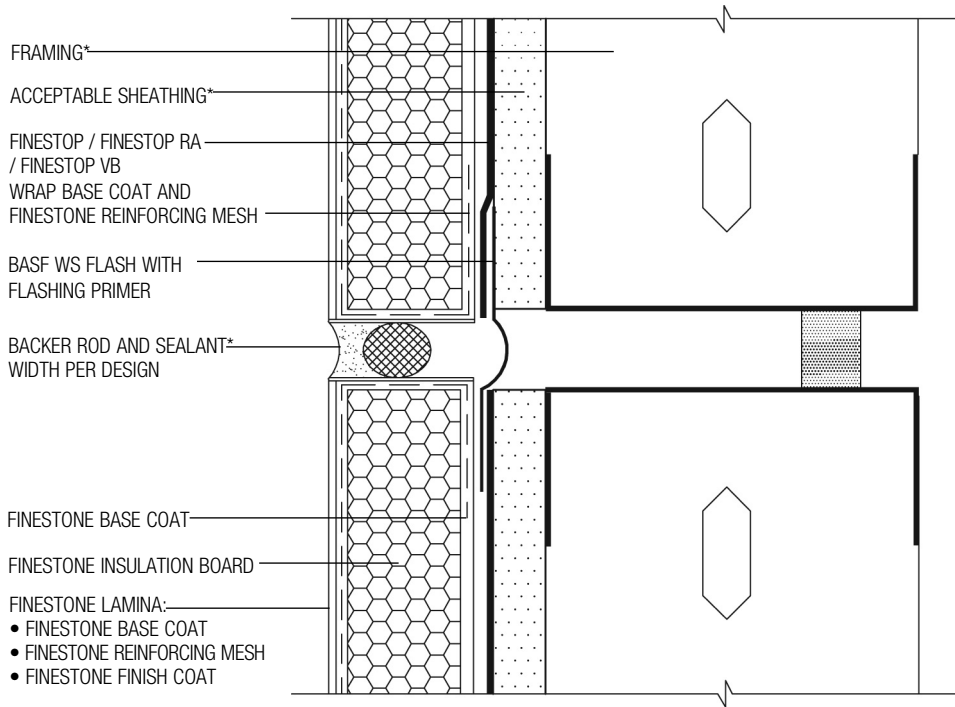
FINESTONE LAMINA:
 • FINESTONE BASE COAT
 • FINESTONE REINFORCING MESH
 • FINESTONE FINISH COAT

PEBBLETEX CLASSIC PB SYSTEM

*by others

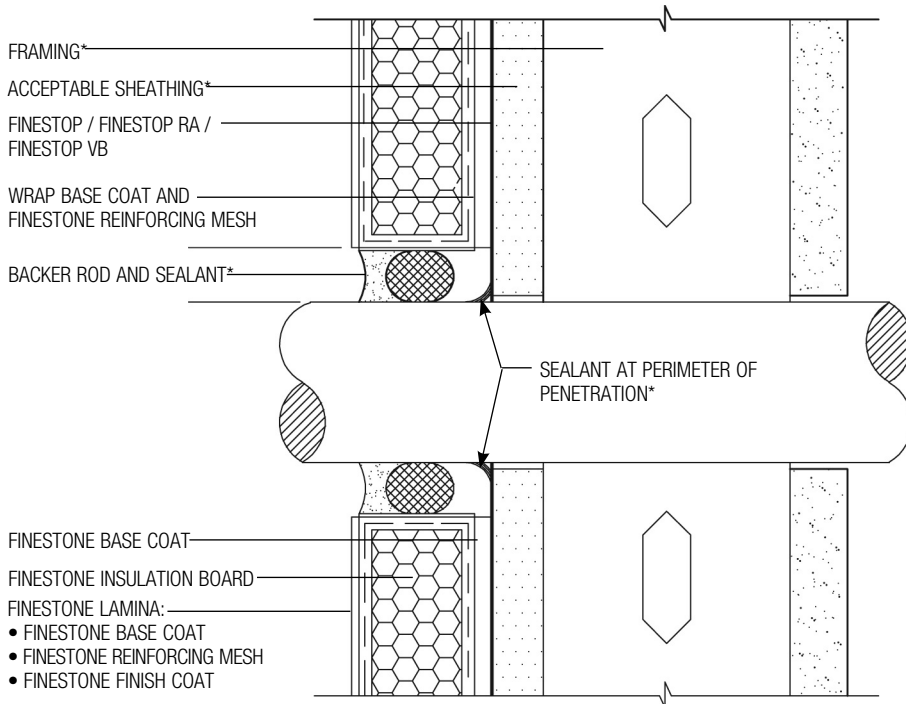
NOTE:
 EXTEND FINESTOP OR FINESTOP RA OR FINESTOP VB A MIN. OF 102 mm (4") ONTO SOFFIT. USE APPROPRIATE REINFORCEMENT AT CORNER.

SWB-16 TYPICAL TERMINATION AT SOFFIT/GABLE END



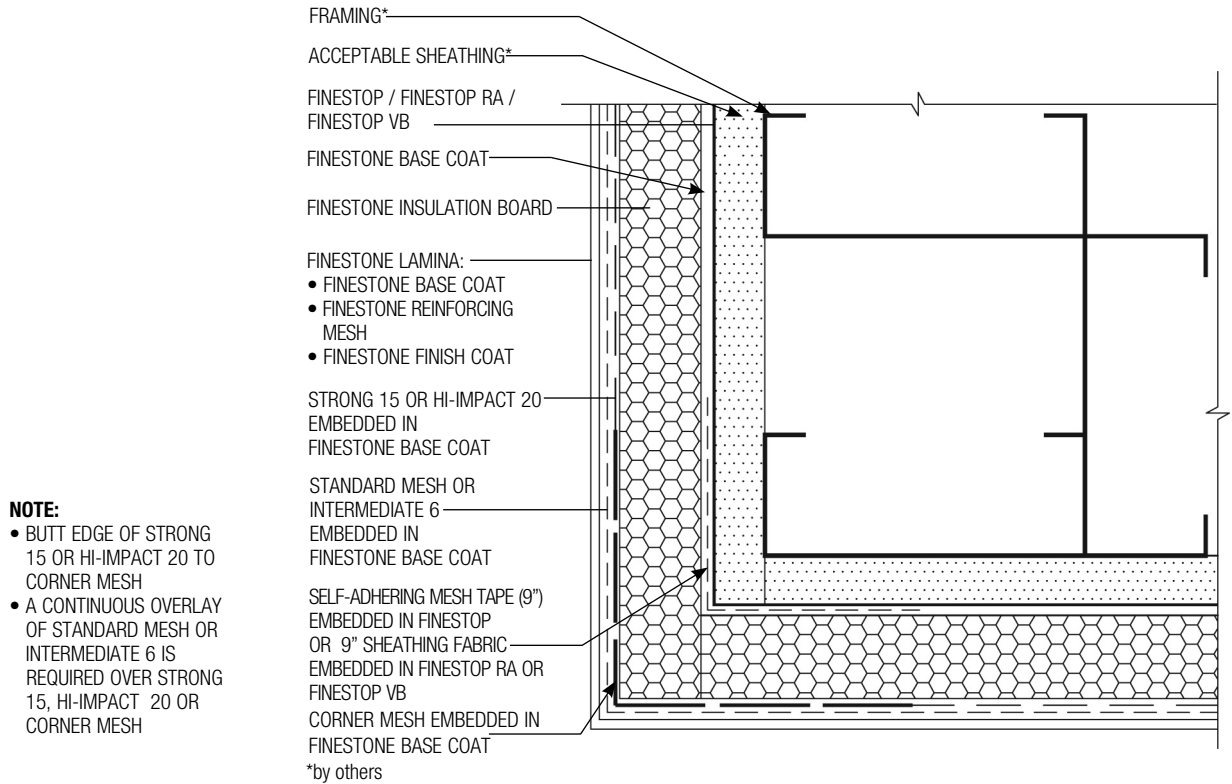
*by others

SWB-17 TYPICAL EXPANSION JOINT DETAIL (PLAN VIEW)

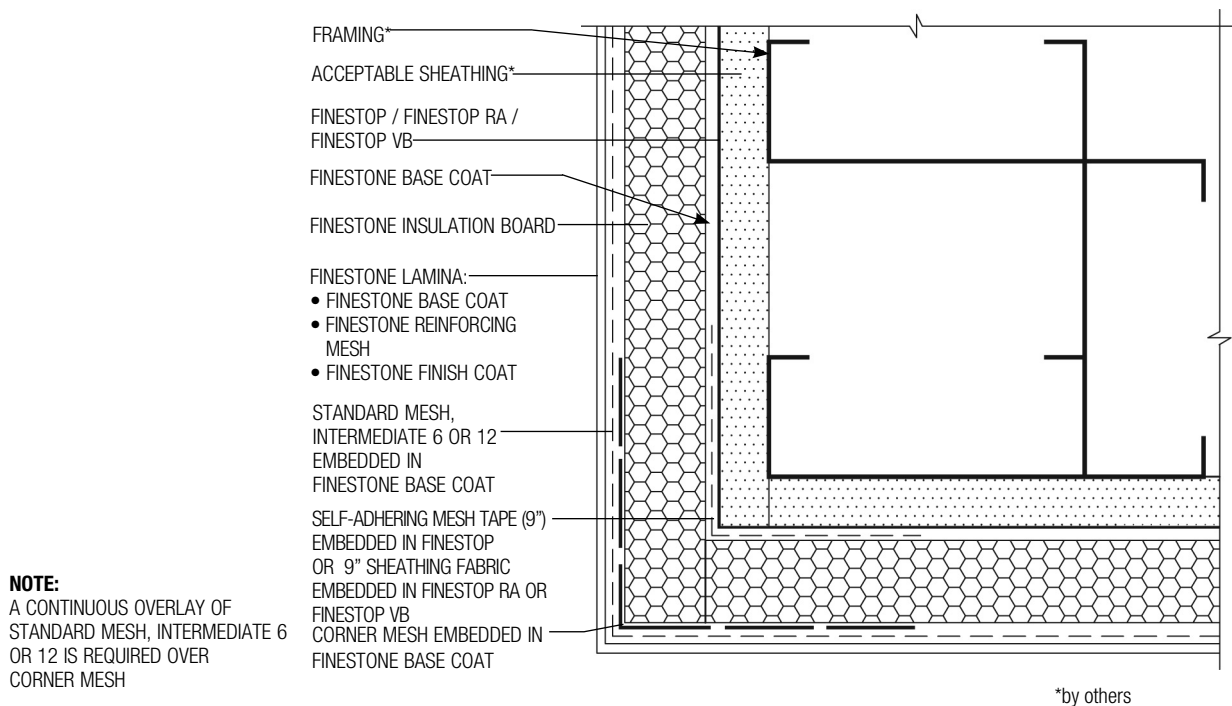


*by others

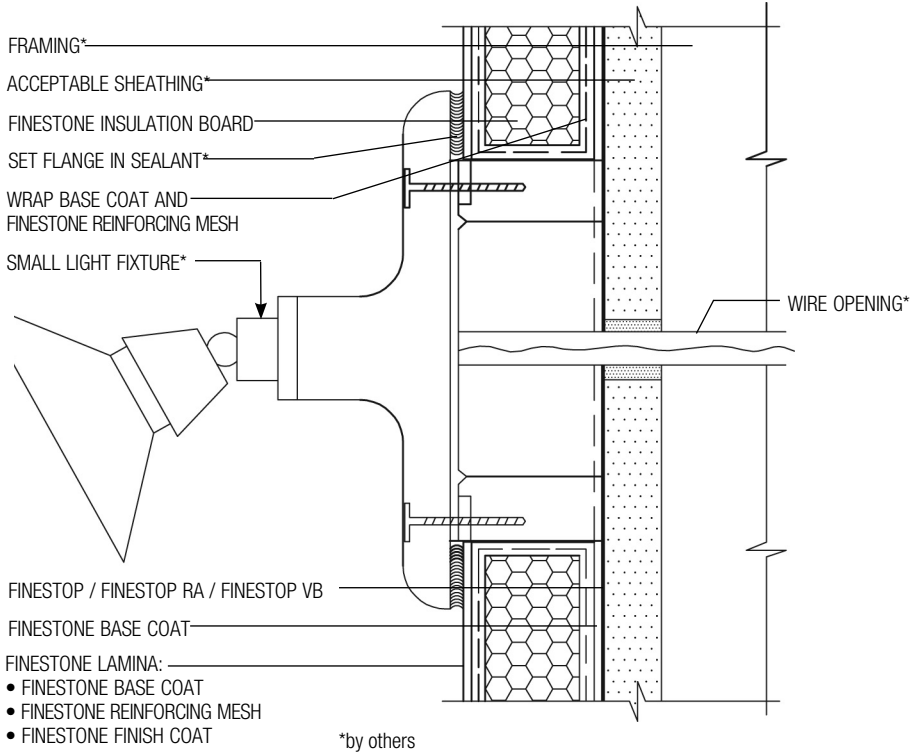
SWB-18 TYPICAL PIPE PENETRATION



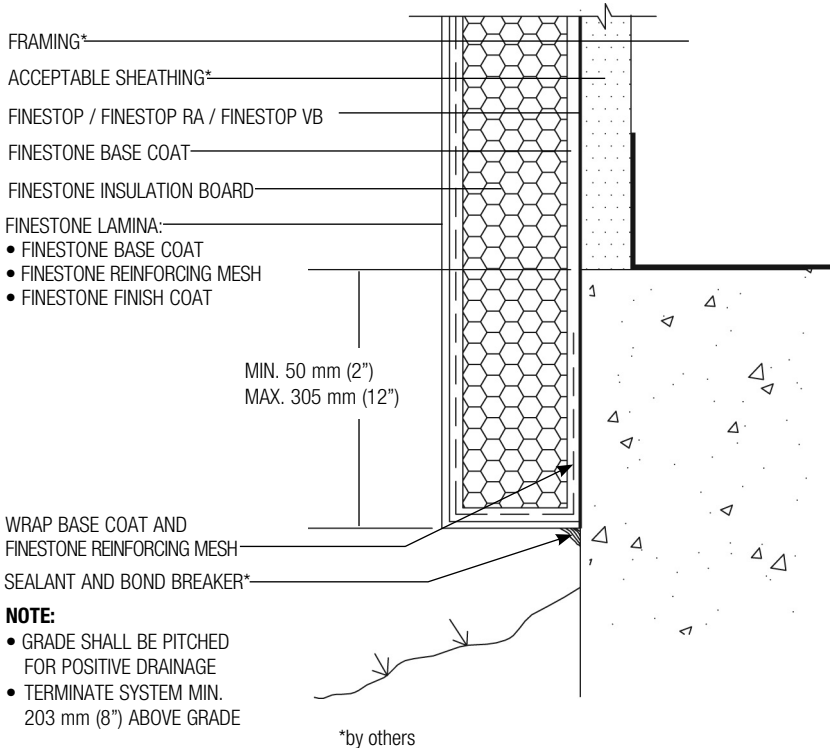
SWB-19 TYPICAL CORNER MESH APPLICATION WITH STRONG 15 OR HI-IMPACT 20 (PLAN VIEW)



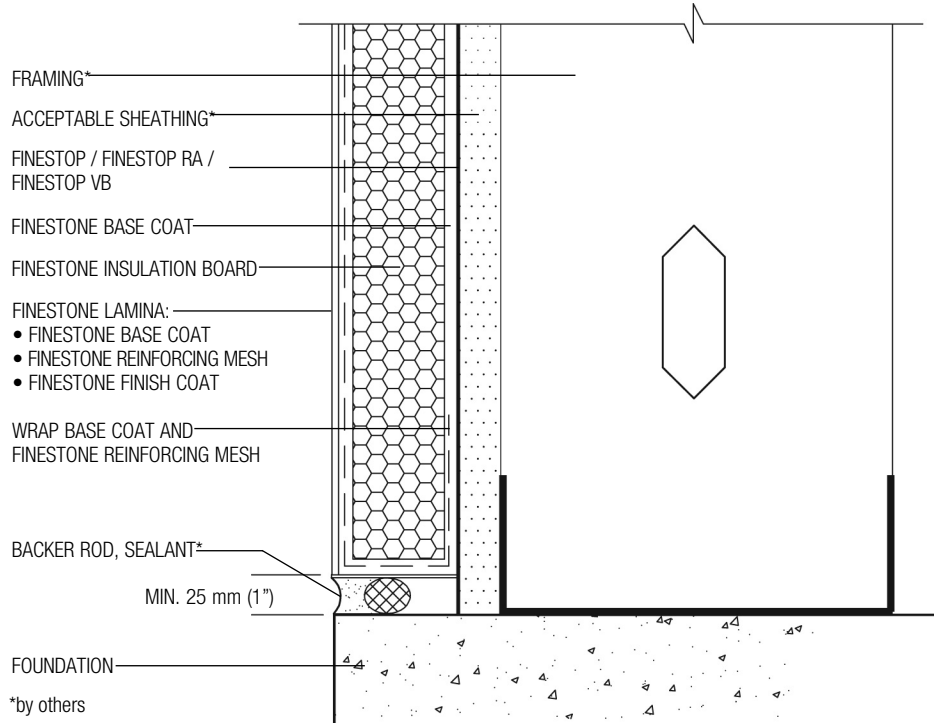
SWB-20 TYPICAL CORNER MESH APPLICATION WITH STANDARD MESH, INTERMEDIATE 6 OR 12 (PLAN VIEW)



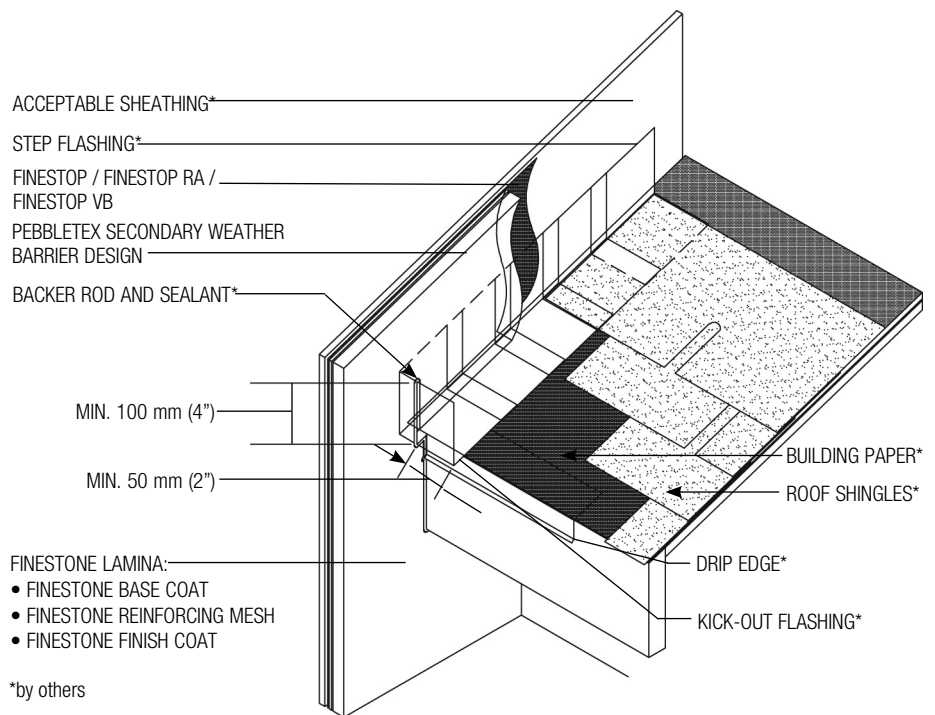
SWB-21 TYPICAL LIGHT FIXTURE



SWB-22 TYPICAL TERMINATION AT FOUNDATION



SWB-23 TYPICAL TERMINATION AT FOUNDATION (FLUSH)



NOTE:

- KICK-OUT FLASHING* MUST BE ANGLED 100° MIN. TO ALLOW FOR PROPER DRAINAGE.
- KICK-OUT FLASHING* SEAMS MUST BE SOLDERED OR SEALED WITH APPROPRIATE SEALANT*.
- TERMINATE PEBBLETEX SECONDARY WEATHER BARRIER DESIGN MIN. 50 mm (2") ABOVE ROOF.

SWB-24 TYPICAL KICK-OUT FLASHING* DETAIL

NOTES

NOTES



For the most current version of this literature, please visit our website at www.finestone.basf.com.