

Finescreen 500/1000

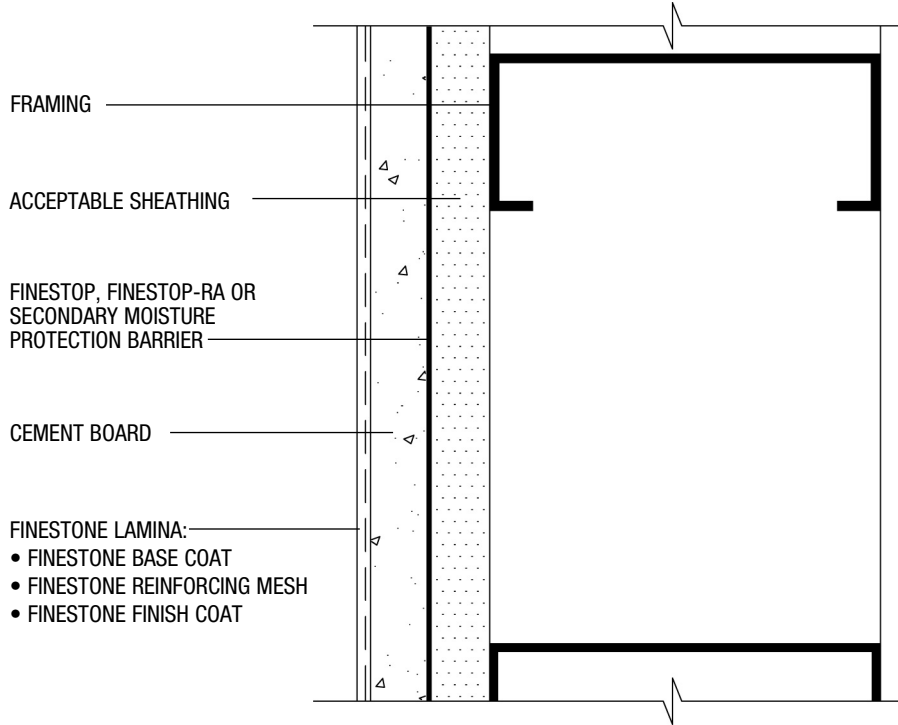
Typical Details

(THIS PAGE INTENTIONALLY LEFT BLANK)

Finescreen 500/1000

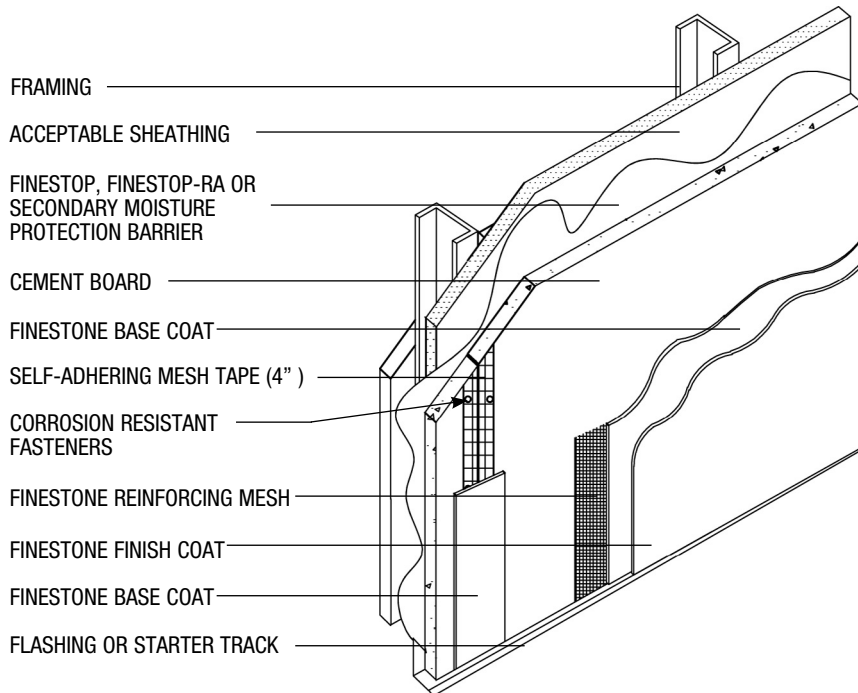
TABLE OF CONTENTS

1. Finescreen 1000 System Design Application (Plan View)
2. Finescreen 1000 System Design Application (Isometric View)
3. Finescreen 500 System Design Application (Plan View)
4. Finescreen 500 System Design Application (Isometric View)
5. Clad Window Jamb (Plan View)
6. Clad Window Head
7. Clad Window Sill
8. Primed Window Head
9. Primed Window Jamb (Plan View)
10. Horizontal Expansion Joint at Floorline Wood Frame Construction
11. Control Joint — Reveal 1
12. Control Joint — Reveal 2
13. Control Joint — Reveal 3
14. Termination at Soffit / Gable End
15. Downspout Application (Plan View)
16. Pipe Penetration
17. Light Fixture
18. Dryer Vent
19. Termination at Foundation
20. Termination at Top of Deck
21. Termination at Bottom of Deck
22. Metal Coping Detail
23. EPS Shape Application
24. Corner Detail (Plan View)
25. Fascia / Soffit
26. Kick-out Flashing

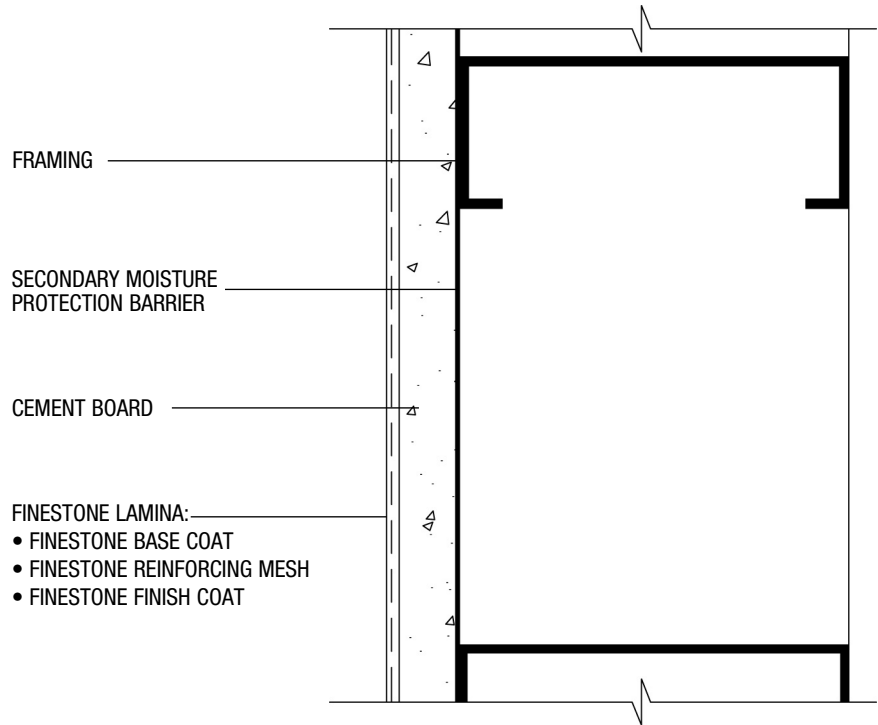


CBS-01 TYPICAL FINESCREEN 1000 DESIGN APPLICATION (PLAN VIEW)

NOTE: FRAMING, ACCEPTABLE SHEATHING AND SEALANT BY OTHERS

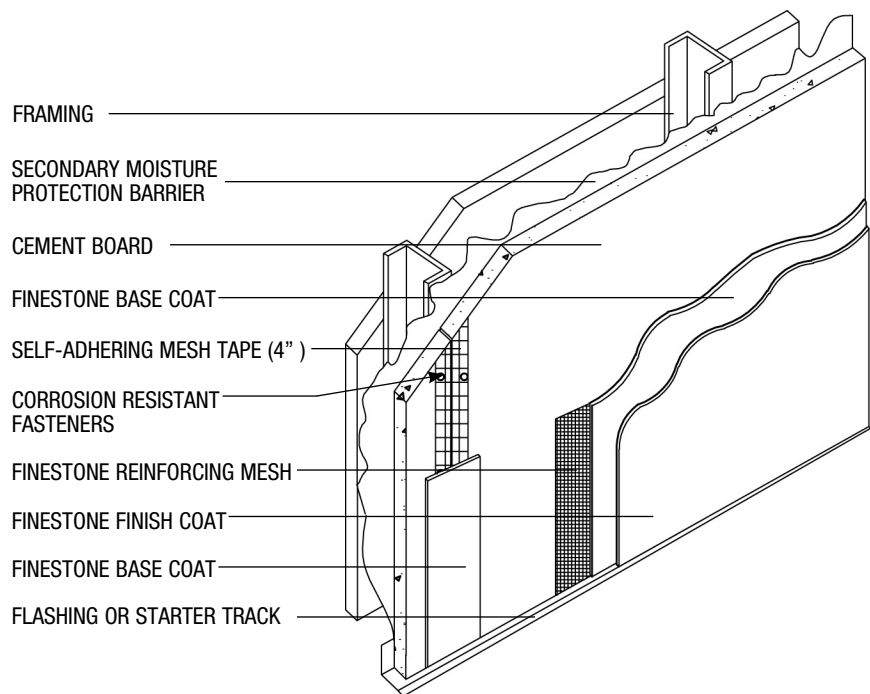


CBS-02 TYPICAL FINESCREEN 1000 DESIGN APPLICATION (ISOMETRIC VIEW)

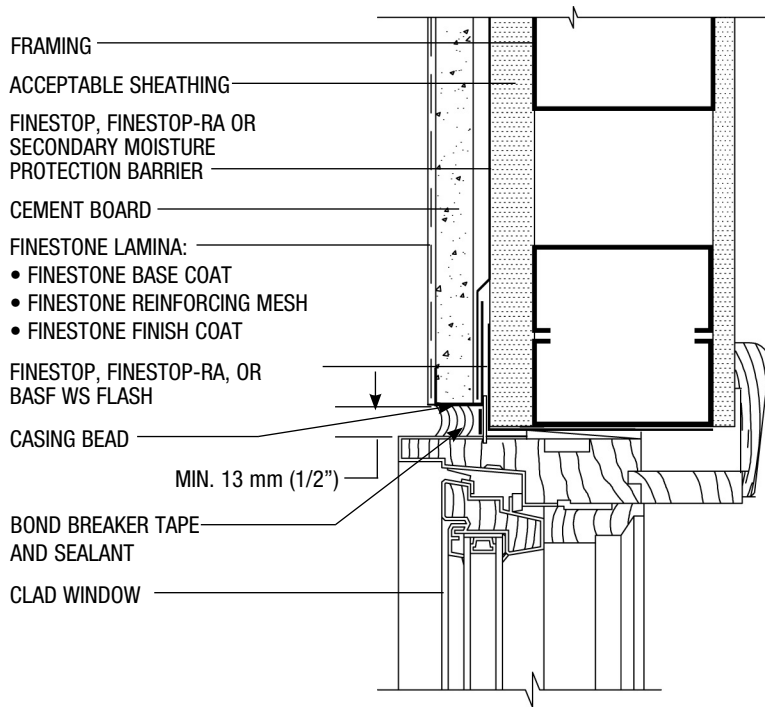


CBS-03 TYPICAL FINESCREEN 500 DESIGN APPLICATION (PLAN VIEW)

NOTE: FRAMING, ACCEPTABLE SHEATHING AND SEALANT BY OTHERS

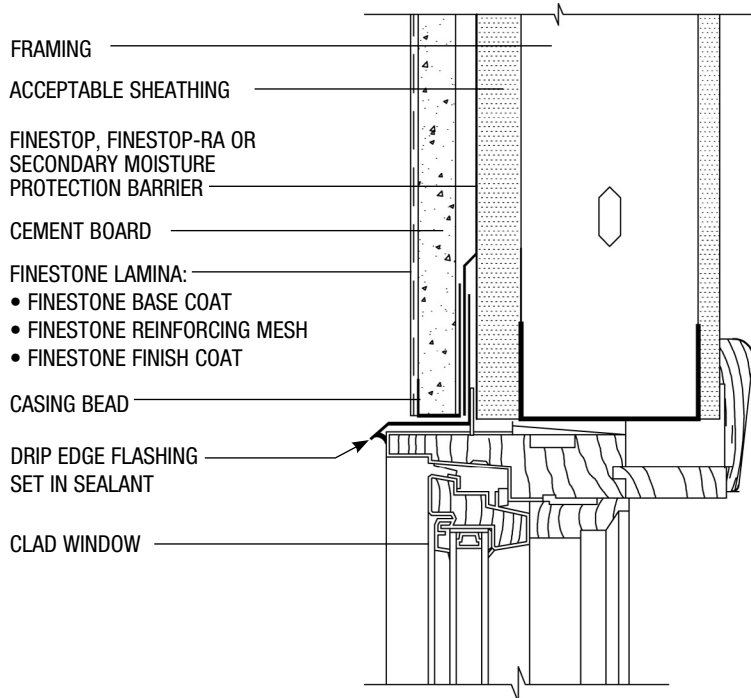


CBS-04 TYPICAL FINESCREEN 500 APPLICATION (ISOMETRIC VIEW)

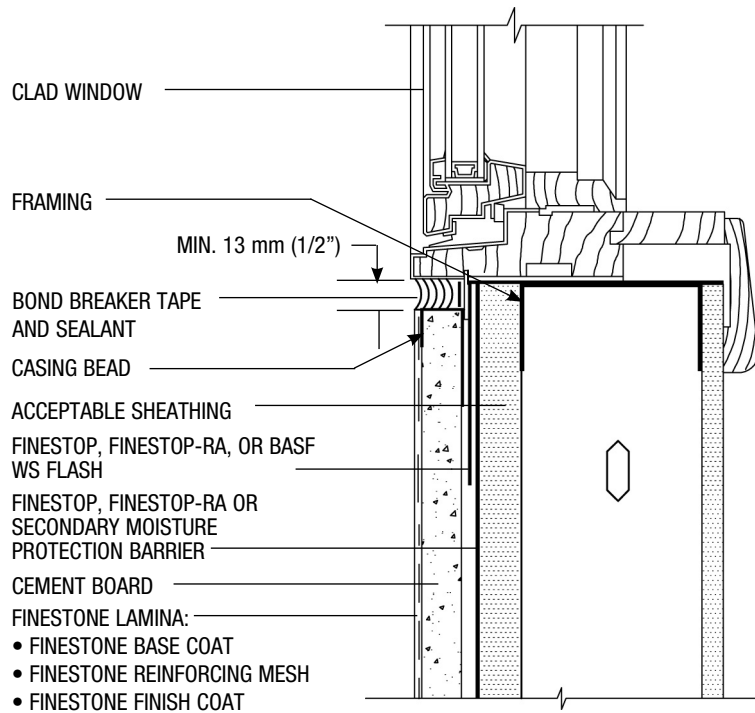


CBS-05 TYPICAL CLAD WINDOW JAMB DETAIL (PLAN VIEW)

NOTE: FRAMING, ACCEPTABLE SHEATHING AND SEALANT BY OTHERS

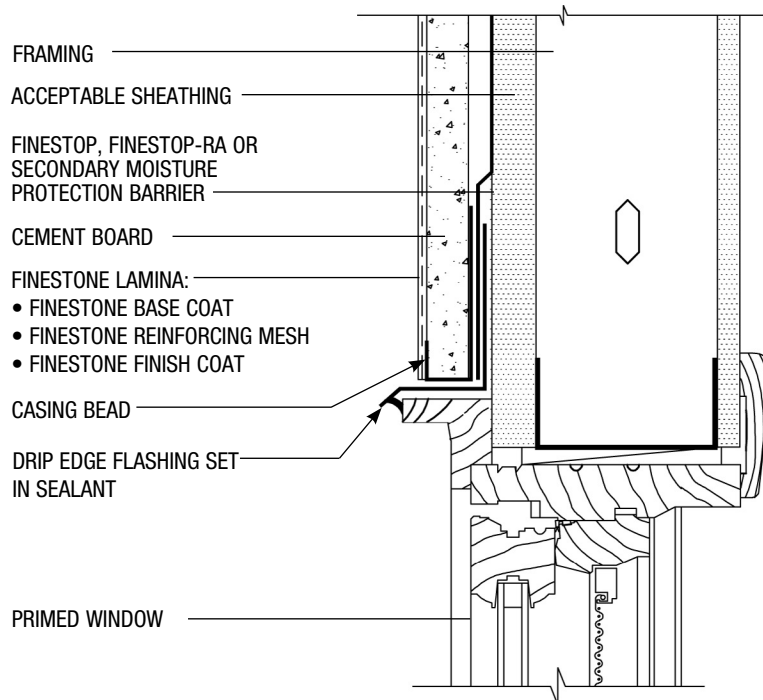


CBS-06 TYPICAL CLAD WINDOW HEAD DETAIL

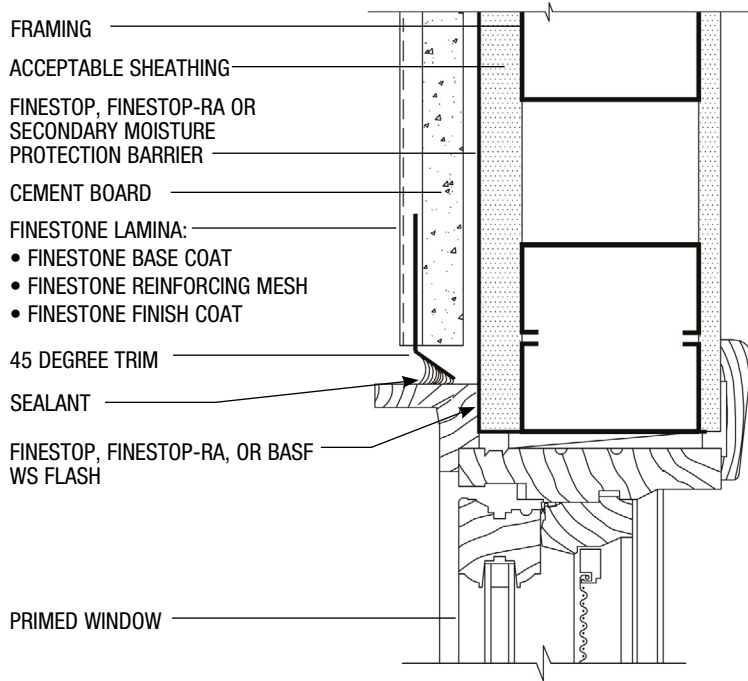


CBS-07 TYPICAL CLAD WINDOW SILL DETAIL

NOTE: FRAMING, ACCEPTABLE SHEATHING AND SEALANT BY OTHERS

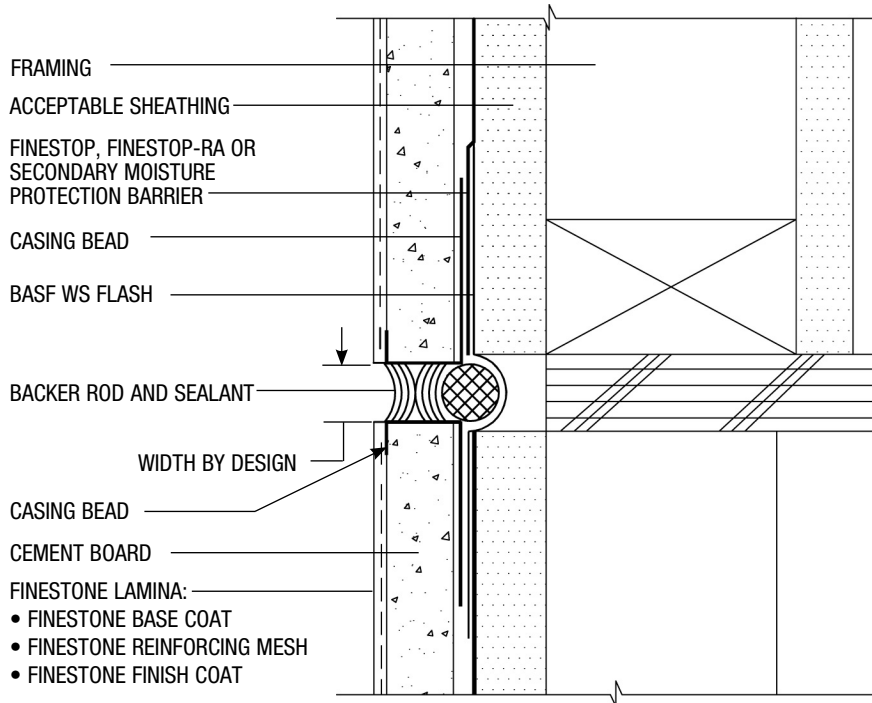


CBS-08 TYPICAL PRIMED WINDOW HEAD DETAIL

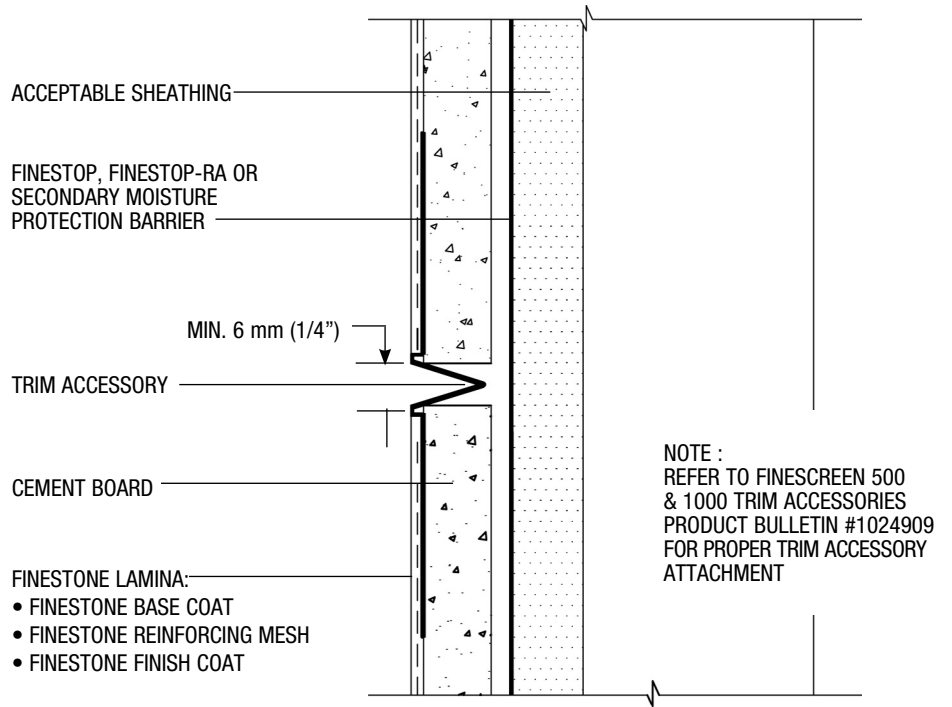


CBS-09 TYPICAL PRIMED WINDOW JAMB (PLAN VIEW)

NOTE: FRAMING, ACCEPTABLE SHEATHING AND SEALANT BY OTHERS

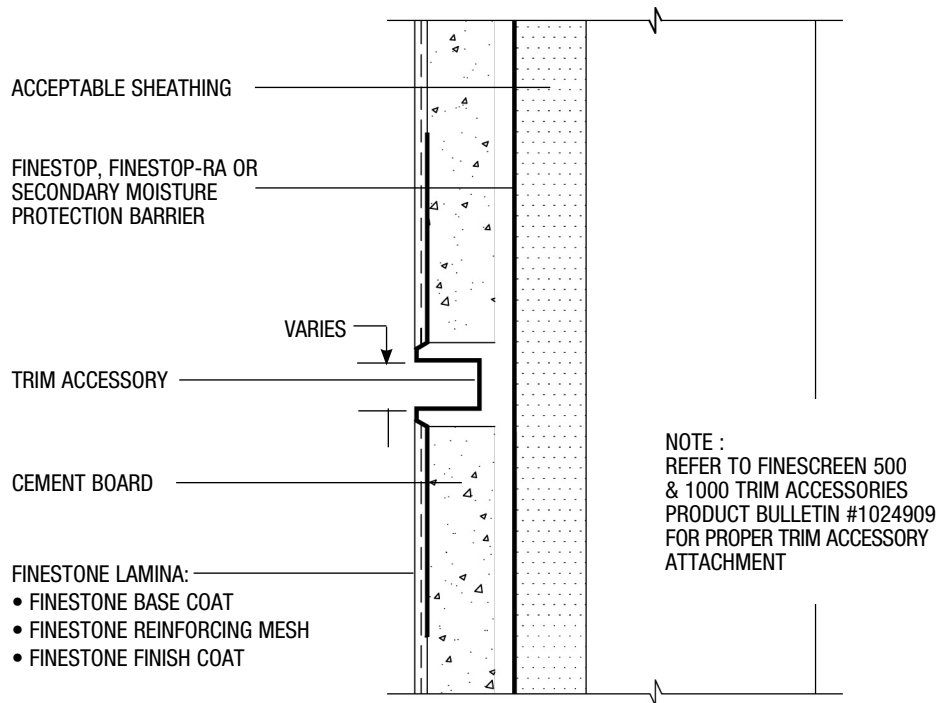


**CBS-10 TYPICAL HORIZONTAL EXPANSION JOINT AT FLOORLINE
WOOD FRAME CONSTRUCTION**

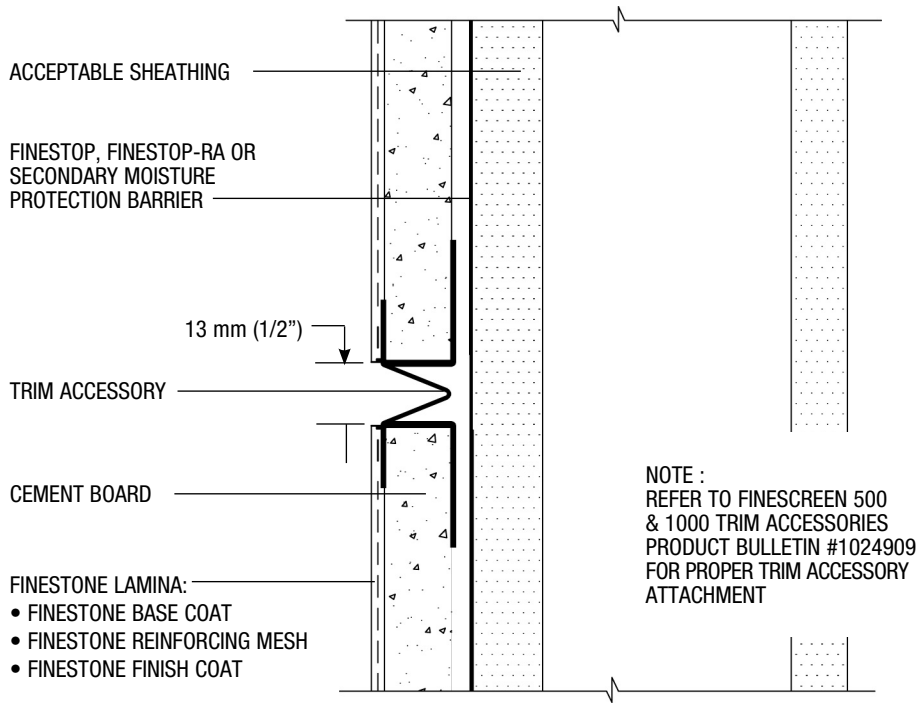


NOTE: FRAMING, ACCEPTABLE SHEATHING
AND SEALANT BY OTHERS

CBS-11 CONTROL JOINT—REVEAL 1

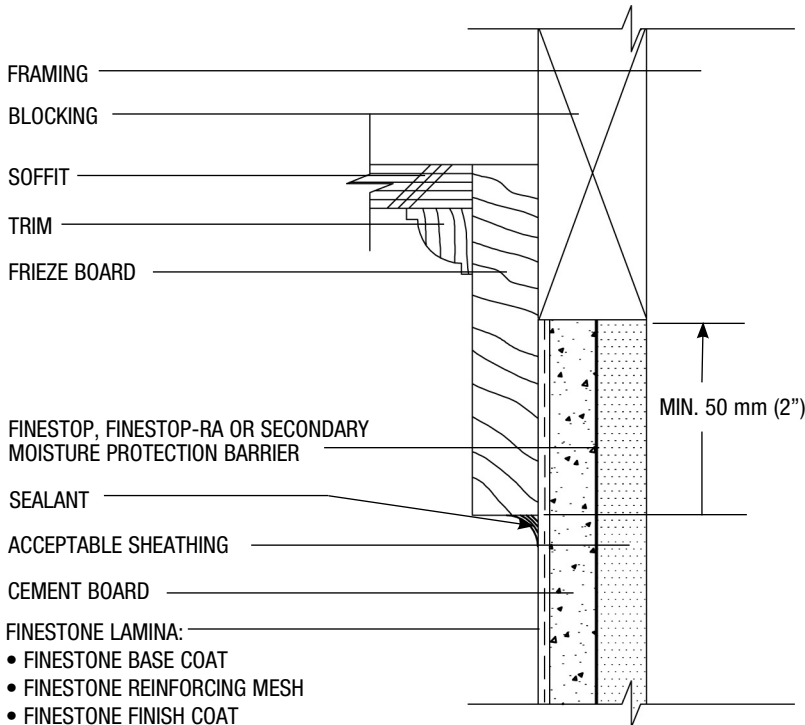


CBS-12 CONTROL JOINT—REVEAL 2

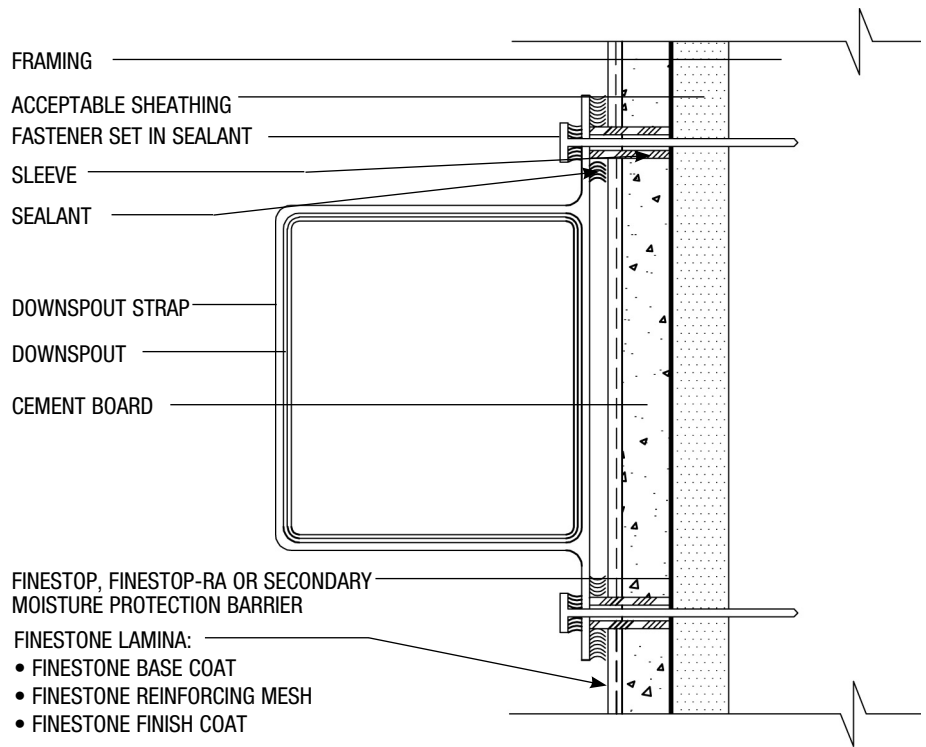


CBS-13 CONTROL JOINT — REVEAL 3

NOTE: FRAMING, ACCEPTABLE SHEATHING
AND SEALANT BY OTHERS

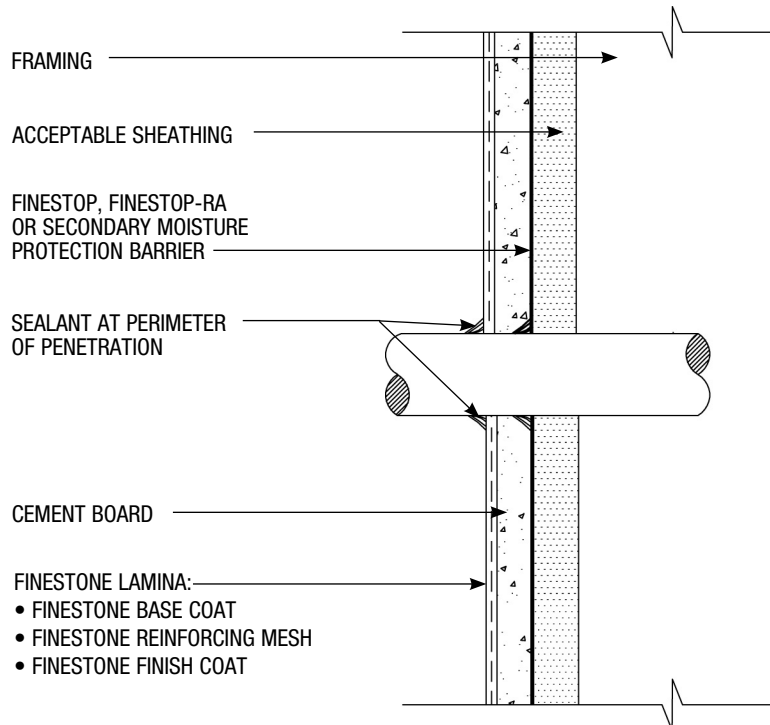


CBS-14 TYPICAL TERMINATION AT SOFFIT/GABLE END

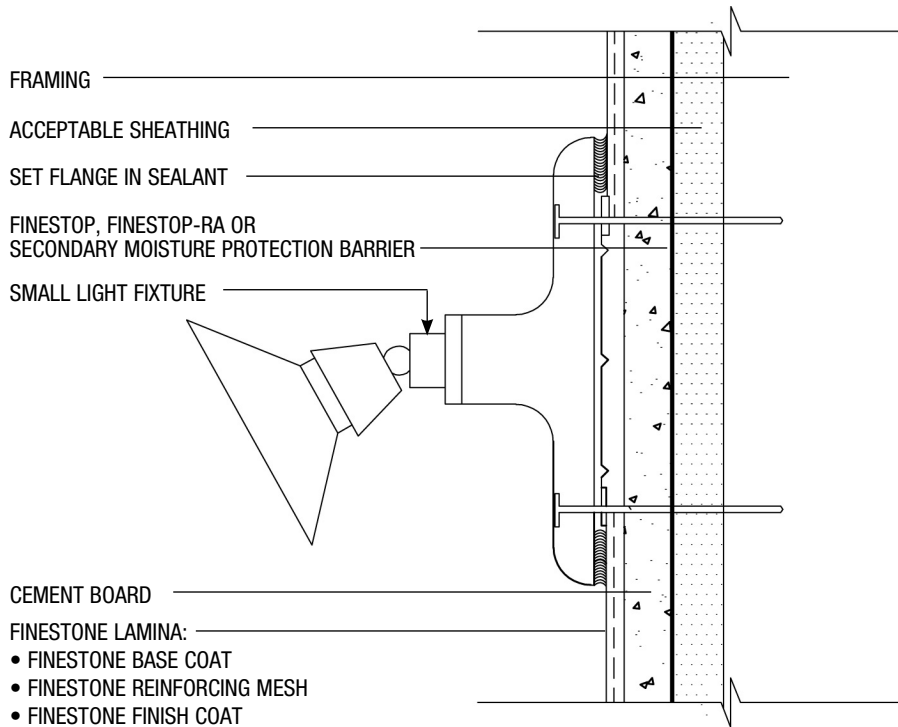


CBS-15 TYPICAL DOWNSPOUT APPLICATION (PLAN VIEW)

NOTE: FRAMING, ACCEPTABLE SHEATHING
AND SEALANT BY OTHERS

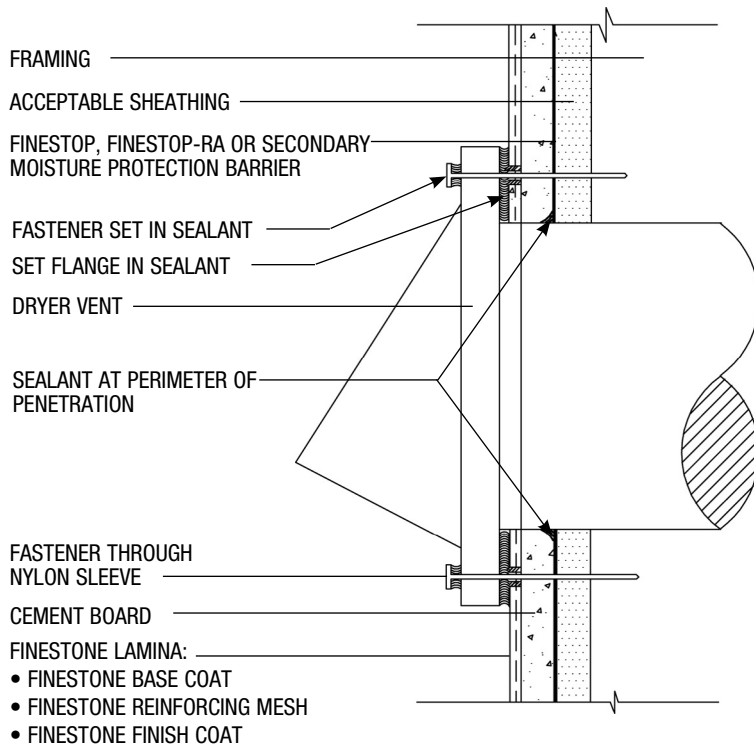


CBS-16 TYPICAL PIPE PENETRATION

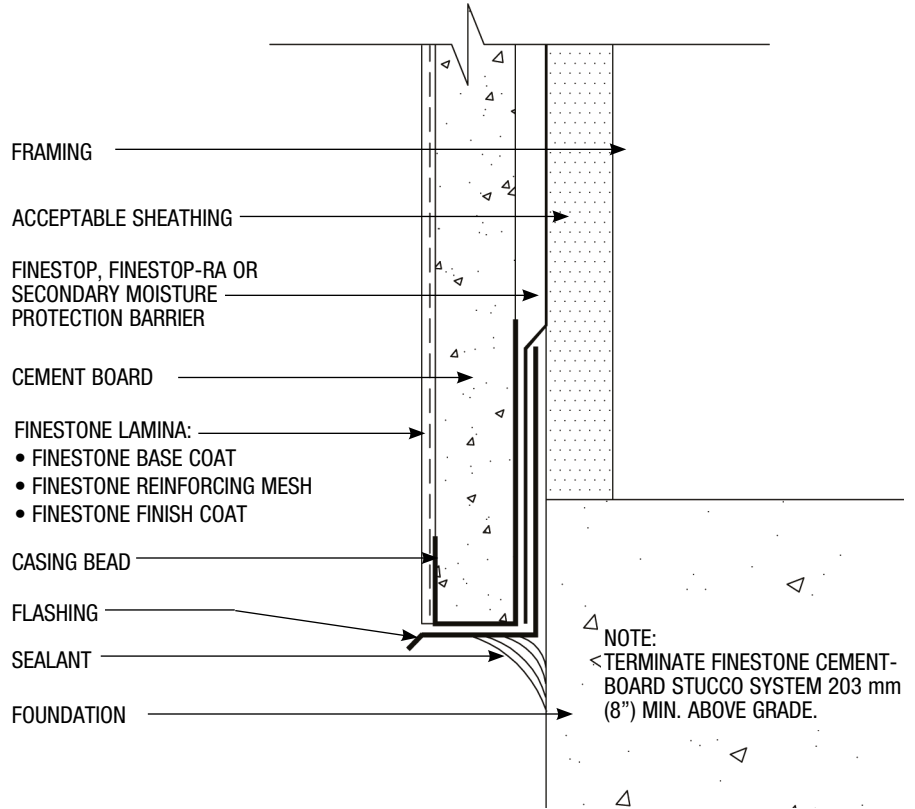


CBS-17 TYPICAL LIGHT FIXTURE

NOTE: FRAMING, ACCEPTABLE SHEATHING
AND SEALANT BY OTHERS

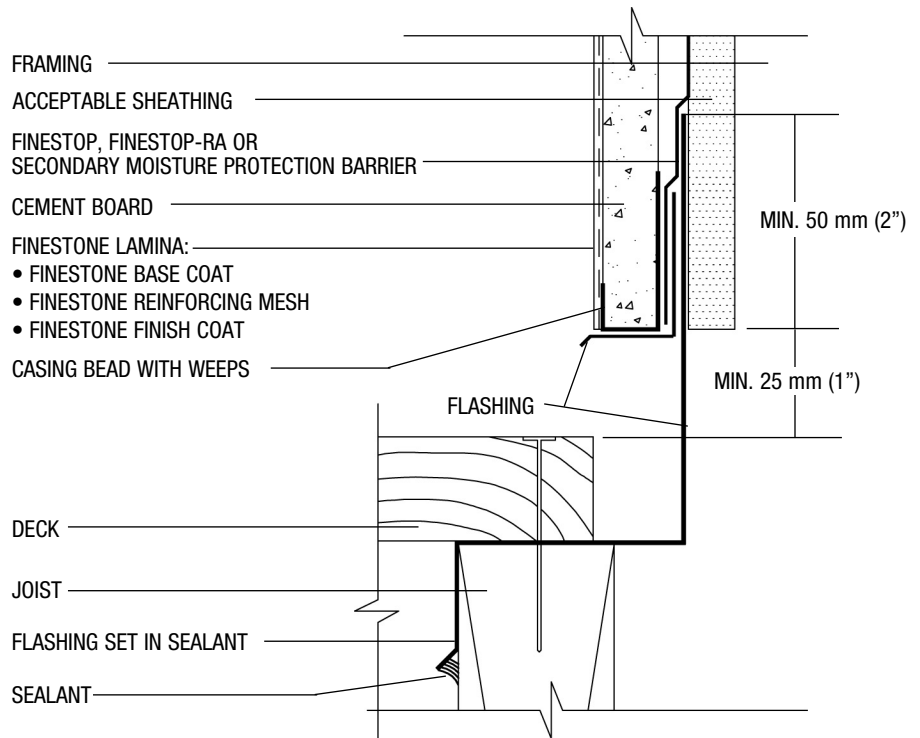


CBS-18 TYPICAL DRYER VENT

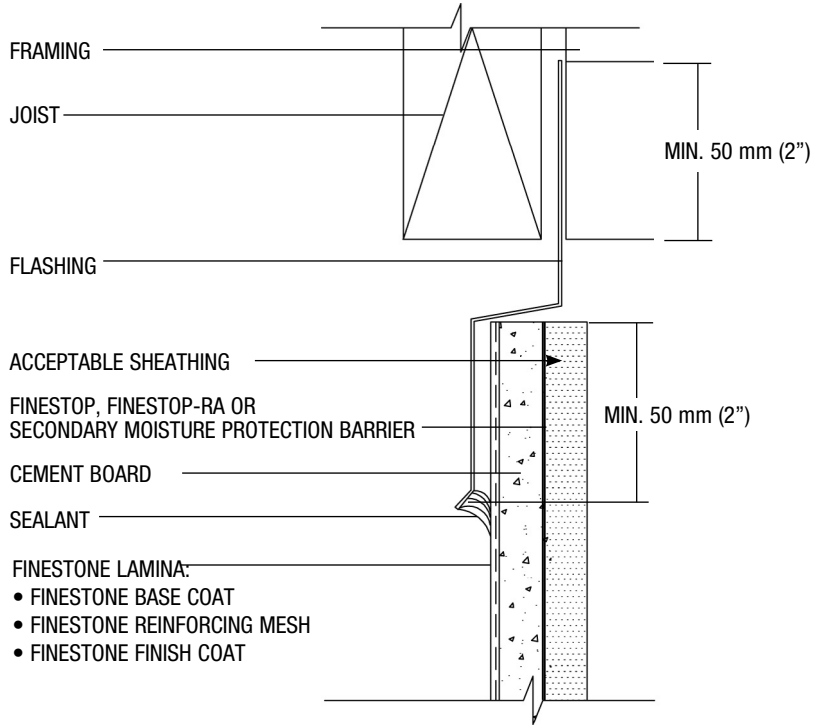


CBS-19 TYPICAL TERMINATION AT FOUNDATION

NOTE: FRAMING, ACCEPTABLE SHEATHING AND SEALANT BY OTHERS

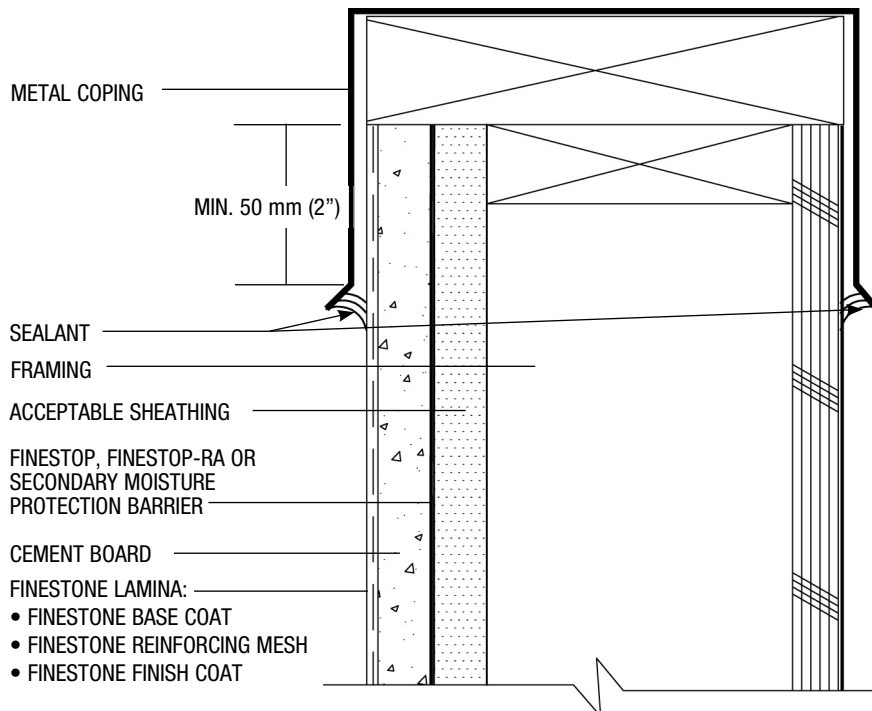


CBS-20 TYPICAL TERMINATION AT TOP OF DECK

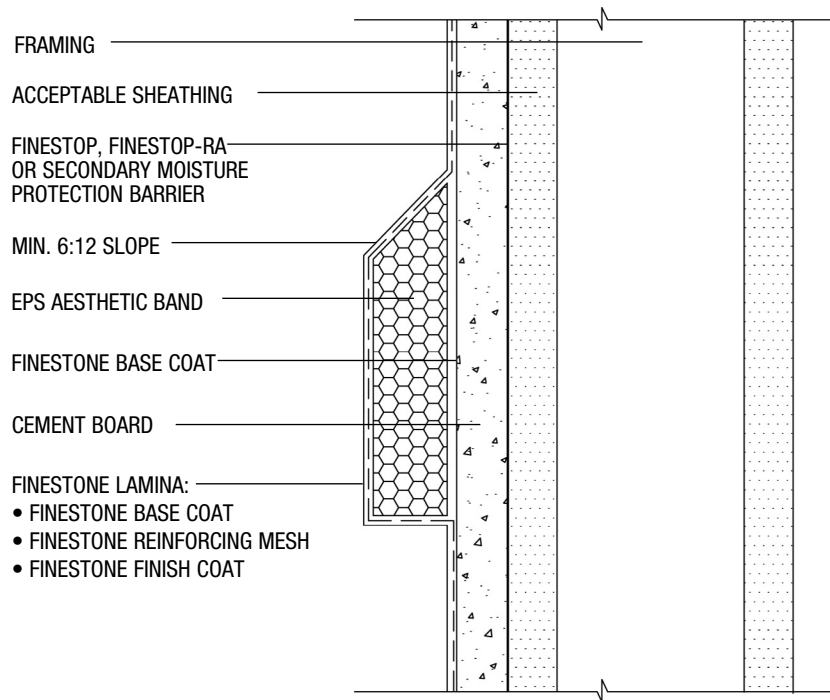


CBS-21 TYPICAL TERMINATION AT BOTTOM OF DECK

NOTE: FRAMING, ACCEPTABLE SHEATHING
AND SEALANT BY OTHERS

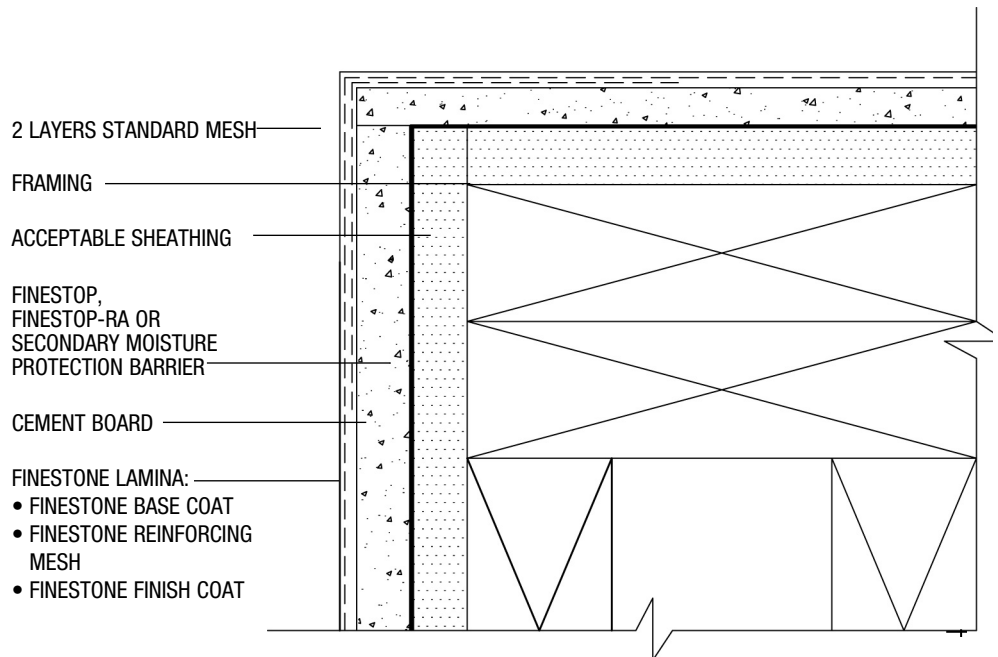


CBS-22 TYPICAL METAL COPING DETAIL

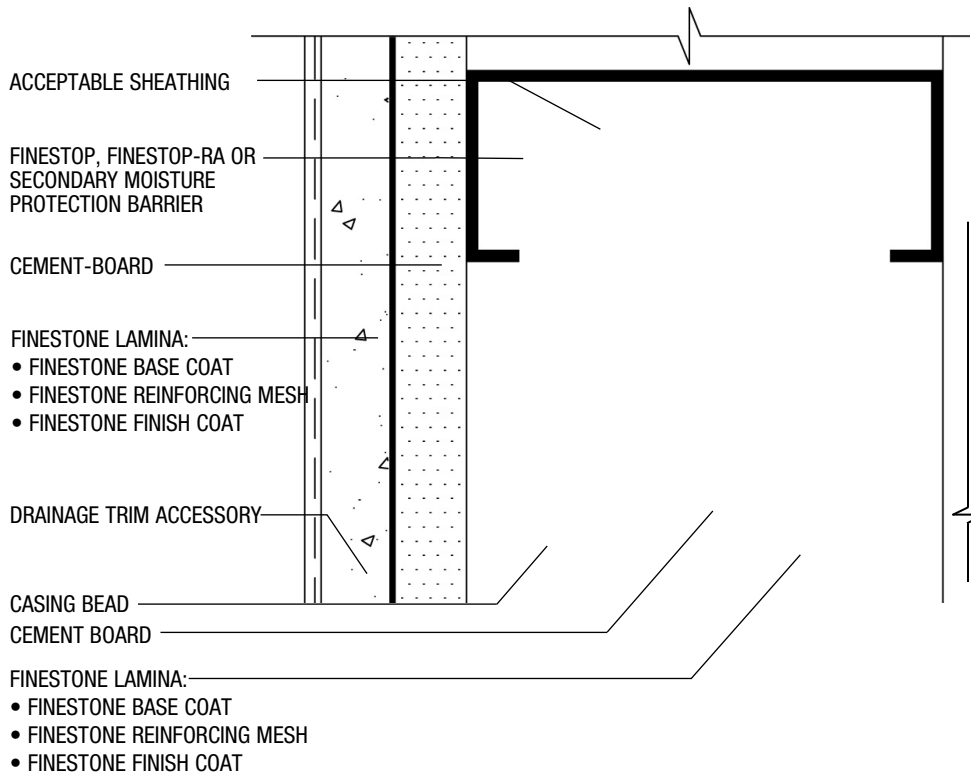


CBS-23 TYPICAL EPS SHAPE APPLICATION

NOTE: FRAMING, ACCEPTABLE SHEATHING AND SEALANT BY OTHERS

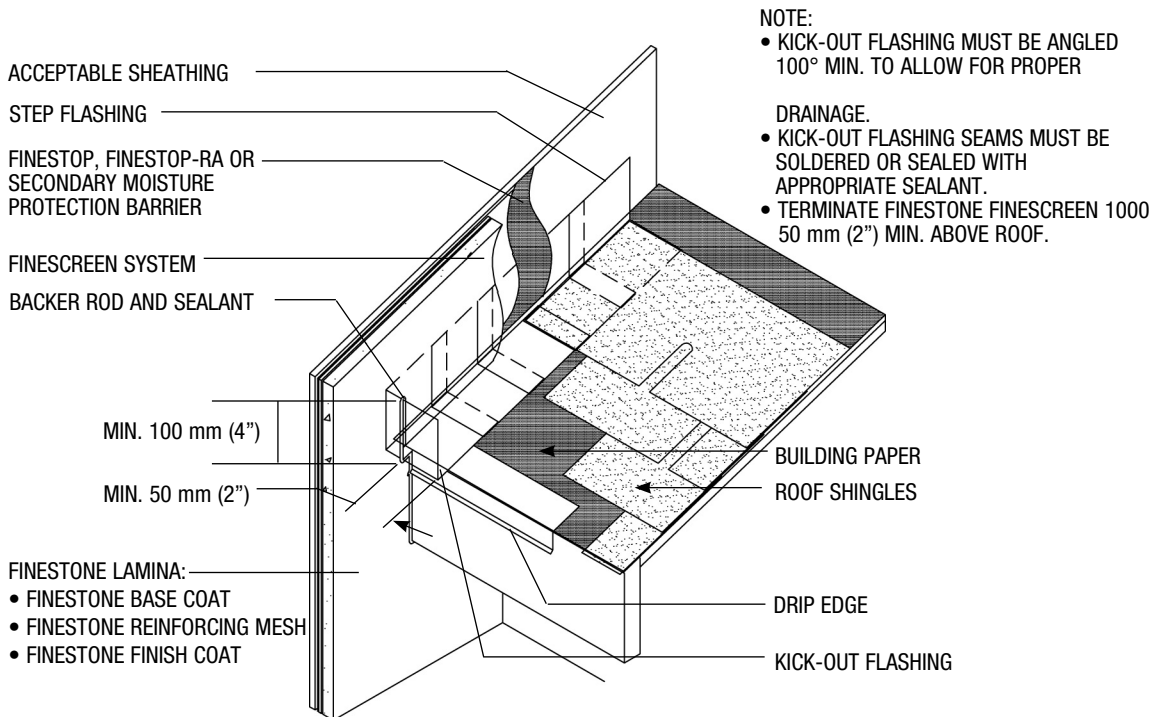


CBS-24 TYPICAL CORNER DETAIL (PLAN VIEW)



CBS-25 TYPICAL FASCIA / SOFFIT DETAIL

NOTE: FRAMING, ACCEPTABLE SHEATHING AND SEALANT BY OTHERS



CBS-26 TYPICAL KICK-OUT FLASHING DETAIL

NOTES

WARRANTY

BASF warrants this product to be free from manufacturing defects and to meet the technical properties on the current Product Bulletin, if used as directed within shelf life. Satisfactory results depend not only on quality products but also upon many factors beyond our control. **BASF MAKES NO OTHER WARRANTY OR GUARANTEE, EXPRESS OR IMPLIED, INCLUDING WARRANTIES OF MERCHANTABILITY OR FITNESS FOR A PARTICULAR PURPOSE WITH RESPECT TO ITS PRODUCTS.** The sole and exclusive remedy of Purchaser for any claim concerning this product, including but not limited to, claims alleging breach of warranty, negligence, strict liability or otherwise, is shipment to purchaser of product equal to the amount of product that fails to meet this warranty or refund of the original purchase price of product that fails to meet this warranty, at the sole option of BASF. In the absence of an extended warranty issued by BASF, any claims concerning this product must be received in writing within one (1) year from the date of shipment and any claims not presented within that period are waived by Purchaser. **BASF WILL NOT BE RESPONSIBLE FOR ANY SPECIAL, INCIDENTAL, CONSEQUENTIAL (INCLUDING LOST PROFITS) OR PUNITIVE DAMAGES OF ANY KIND.**

Purchaser must determine the suitability of the products for the intended use and assumes all risks and liabilities in connection therewith. This information and all further technical advice are based on BASF's present knowledge and experience. However, BASF assumes no liability for providing such information and advice including the extent to which such information and advice may relate to existing third party intellectual property rights, especially patent rights, nor shall any legal relationship be created by or arise from the provision of such information and advice. BASF reserves the right to make any changes according to technological progress or further developments. The Purchaser of the Product(s) must test the product(s) for suitability for the intended application and purpose before proceeding with a full application of the product(s). Performance of the product described herein should be verified by testing and carried out by qualified experts.

For the most current version of this literature, please visit our website at www.finestone.basf.com.