

FRAMING*

ACCEPTABLE SHEATHING*

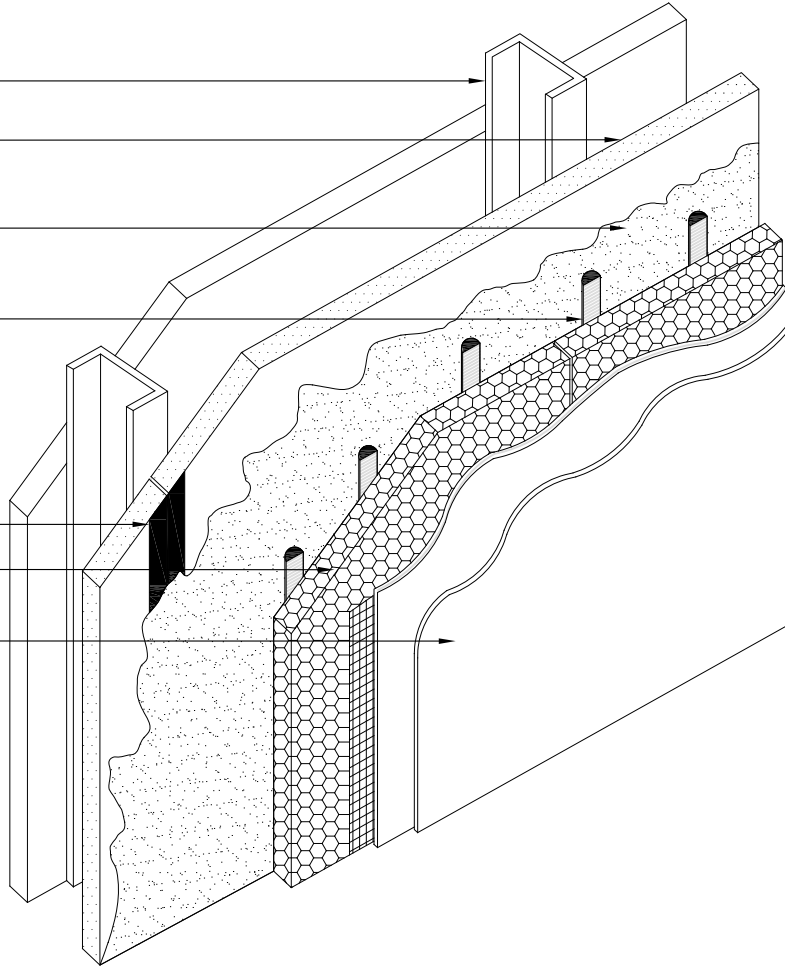
FINESTOP RA/FINESTOP RS/
FINESTOP VB

FINESTONE ADHESIVE/BASE COAT
APPLIED TO EPS INSULATION BOARD

BASF MAXFLASH OR SHEATHING FABRIC
EMBEDDED IN FINESTOP RA; RS; VB OR
WS FLASH W/ FLASHING PRIMER

APPROVED EPS INSULATION BOARD

FINESTONE LAMINA:
FINESTONE BASE COAT
FINESTONE REINFORCING MESH
FINESTONE FINISH COAT



*BY OTHERS

REV 170825

TYPICAL FINEPANEL ISOMETRIC VIEW

FINEPANEL CI-D DESIGN

SCALE: NTS

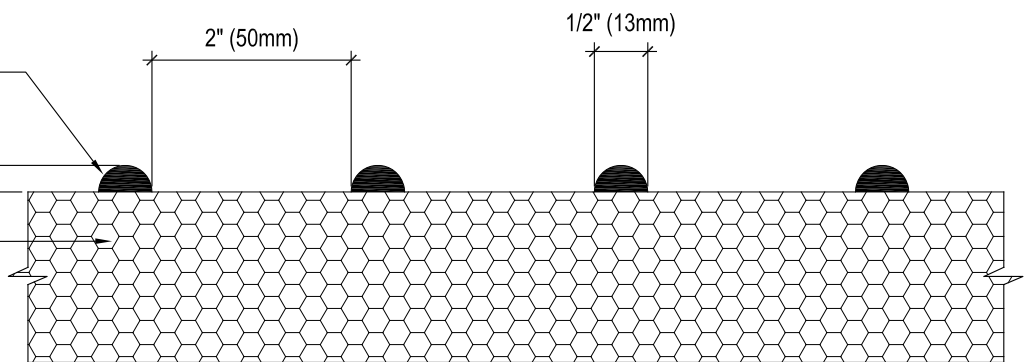
01

Structure, substrates, flashing, and other items which are not part of the BASF *FinePanel CI-D System* are the responsibility of others. This detail is subject to change without notice. BASF Corporation - Wall Systems (herein after BASF Wall Systems) accepts no liability for the end use of this detail. For conditions not shown, consult BASF Wall Systems for review of specific detail.

BASF
We create chemistry

VERTICAL NOTCHES OF FINESTONE
ADHESIVE / BASE COAT APPLIED TO
APPROVED EPS INSULATION BOARD

1/2" (13mm)
APPROVED EPS INSULATION BOARD



REV 170825

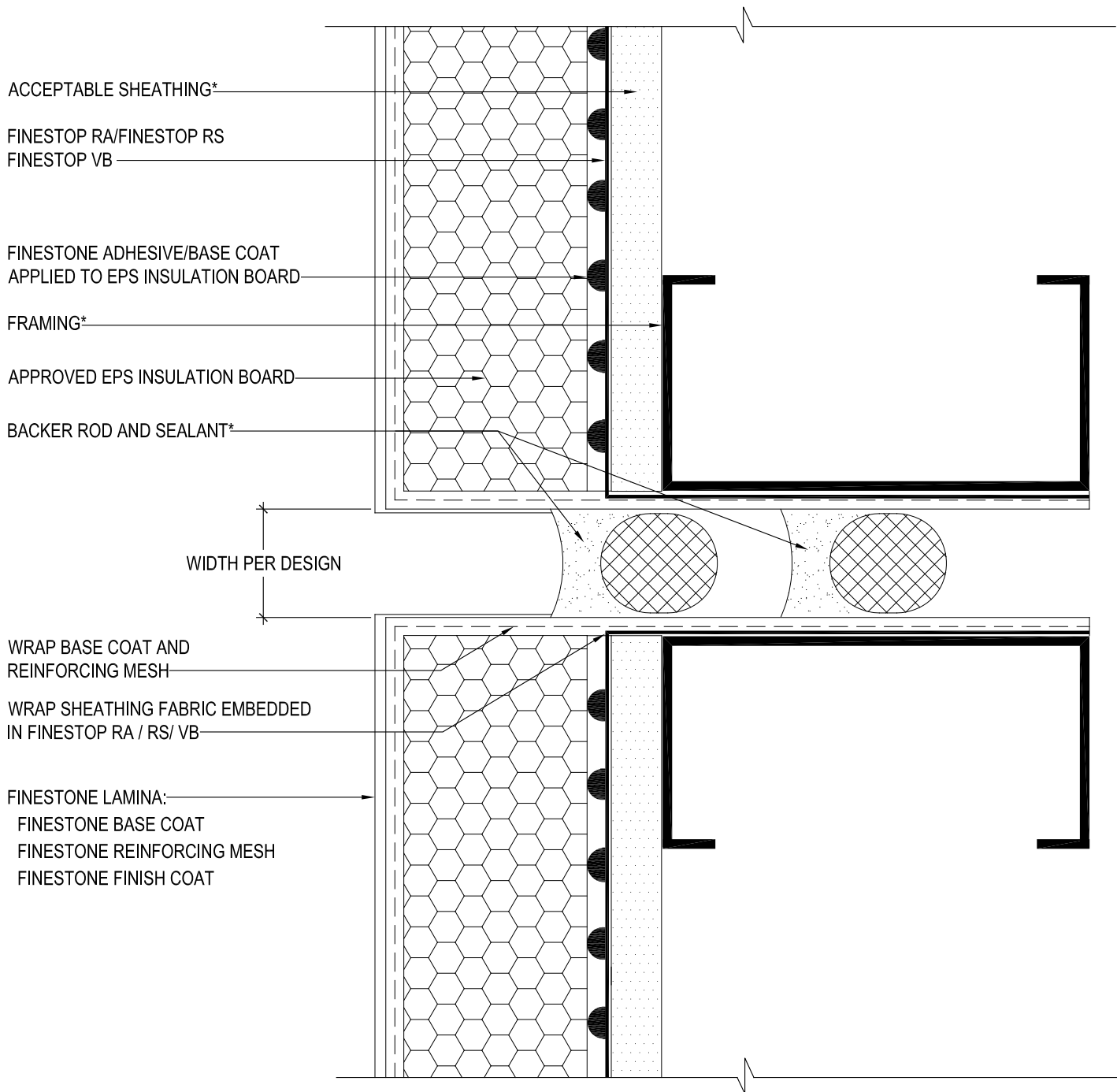
TYPICAL FINEPANEL PATTERN FINEPANEL CI-D DESIGN

SCALE: NTS

02

Structure, substrates, flashing, and other items which are not part of the BASF *FinePanel CI-D System* are the responsibility of others. This detail is subject to change without notice. BASF Corporation - Wall Systems (herein after BASF Wall Systems) accepts no liability for the end use of this detail. For conditions not shown, consult BASF Wall Systems for review of specific detail.


We create chemistry



NOTE: DO NOT APPLY FINISH INTO JOINT TO RECEIVE SEALANT

(PLAN VIEW)

*BY OTHERS

REV 170825

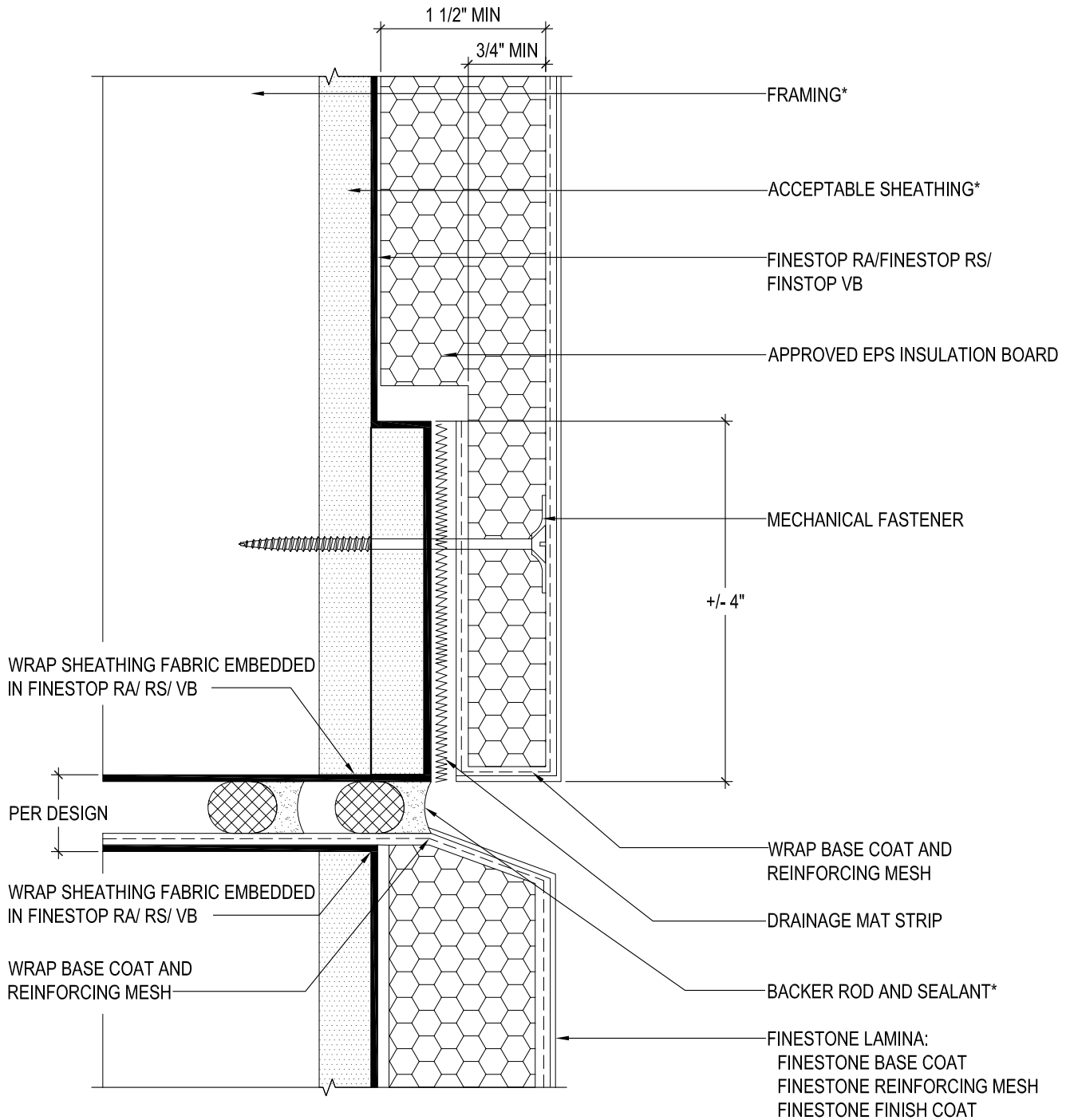
TYPICAL VERTICAL PANEL TO PANEL JOINT FINEPANEL CI-D DESIGN

SCALE: NTS

03

Structure, substrates, flashing, and other items which are not part of the BASF *FinePanel CI-D System* are the responsibility of others. This detail is subject to change without notice. BASF Corporation - Wall Systems (herein after BASF Wall Systems) accepts no liability for the end use of this detail. For conditions not shown, consult BASF Wall Systems for review of specific detail.

BASF
We create chemistry



NOTE: DO NOT APPLY FINISH INTO JOINT TO RECEIVE SEALANT

*BY OTHERS

REV 170825

TYPICAL PANEL TO PANEL W/ CONCEALED CONTINUOUS DRAINAGE PROVISIONS

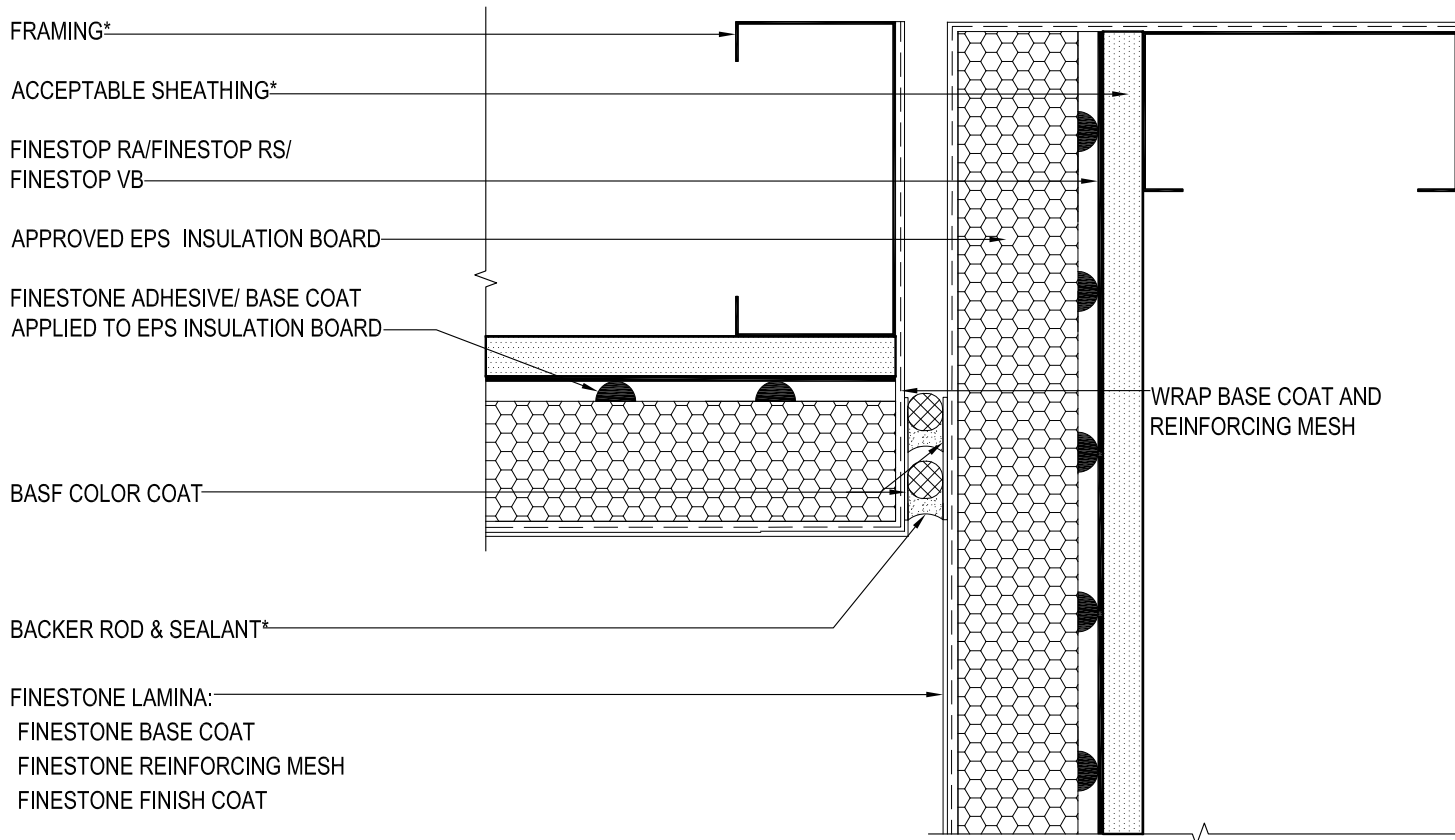
FINEPANEL CI-D DESIGN

SCALE: NTS

04

Structure, substrates, flashing, and other items which are not part of the BASF *FinePanel CI-D System* are the responsibility of others. This detail is subject to change without notice. BASF Corporation - Wall Systems (herein after BASF Wall Systems) accepts no liability for the end use of this detail. For conditions not shown, consult BASF Wall Systems for review of specific detail.

BASF
We create chemistry



NOTE: DO NOT APPLY FINISH INTO JOINT TO RECEIVE SEALANT

*BY OTHERS

REV 170825

TYPICAL INSIDE CORNER APPLICATION FINEPANEL CI-D DESIGN

SCALE: NTS

05

Structure, substrates, flashing, and other items which are not part of the BASF *FinePanel CI-D System* are the responsibility of others. This detail is subject to change without notice. BASF Corporation - Wall Systems (herein after BASF Wall Systems) accepts no liability for the end use of this detail. For conditions not shown, consult BASF Wall Systems for review of specific detail.

BASF
We create chemistry

FRAMING*

ACCEPTABLE SHEATHING*

FINESTOP RA/FINESTOP RS/
FINESTOP VB

FINESTONE ADHESIVE/ BASE COAT
APPLIED TO EPS INSULATION BOARD

APPROVED EPS INSULATION BOARD

FINESTONE LAMINA:
FINESTONE BASE COAT
FINESTONE REINFORCING MESH
FINESTONE FINISH COAT

BASF COLOR COAT

BACKER ROD & SEALANT*

(PLAN VIEW)

NOTE: DO NOT APPLY FINISH INTO JOINT TO RECEIVE SEALANT

*BY OTHERS

REV 170825

TYPICAL OUTSIDE CORNER APPLICATION FINEPANEL CI-D DESIGN

SCALE: NTS

06

Structure, substrates, flashing, and other items which are not part of the BASF *FinePanel CI-D System* are the responsibility of others. This detail is subject to change without notice. BASF Corporation - Wall Systems (herein after BASF Wall Systems) accepts no liability for the end use of this detail. For conditions not shown, consult BASF Wall Systems for review of specific detail.

BASF
We create chemistry

FRAMING*

ACCEPTABLE SHEATHING*

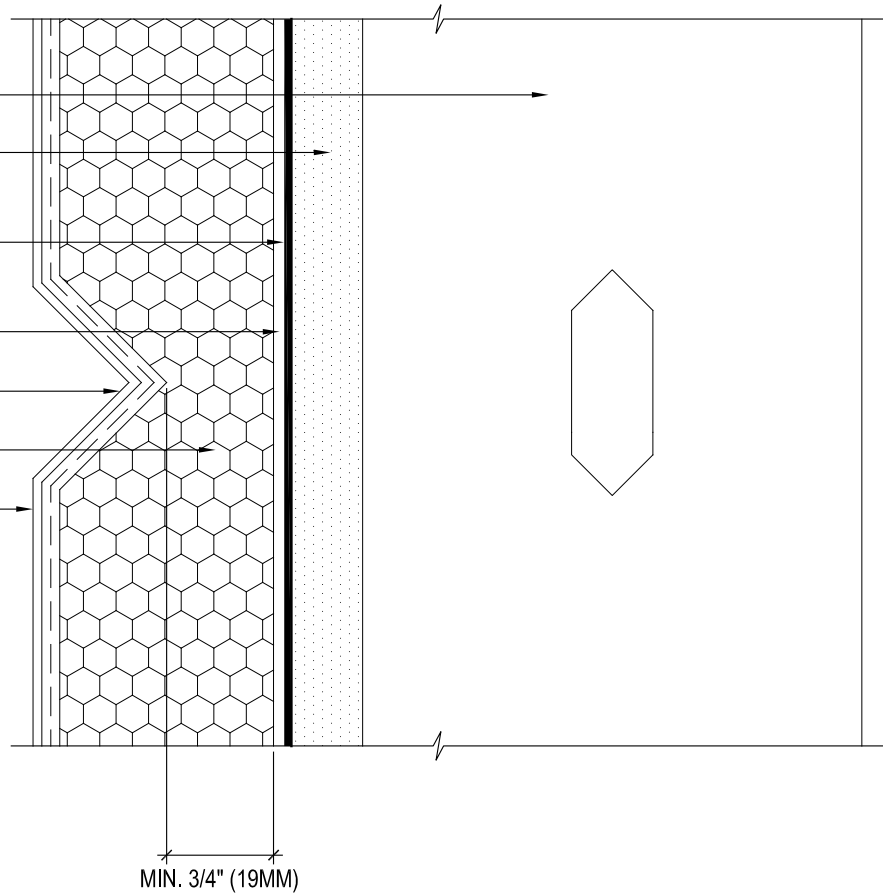
FINESTOP RA/FINESTOP RS/
FINESTOP VB

FINESTONE ADHESIVE/BASE COAT
APPLIED TO EPS INSULATION BOARD

AESTHETIC REVEAL

APPROVED EPS INSULATION BOARD

FINESTONE LAMINA:
FINESTONE BASE COAT
FINESTONE REINFORCING MESH
FINESTONE FINISH COAT



*BY OTHERS

REV 170825

TYPICAL AESTHETIC GROOVE FINEPANEL CI-D DESIGN

SCALE: NTS

07

Structure, substrates, flashing, and other items which are not part of the BASF *FinePanel CI-D System* are the responsibility of others. This detail is subject to change without notice. BASF Corporation - Wall Systems (herein after BASF Wall Systems) accepts no liability for the end use of this detail. For conditions not shown, consult BASF Wall Systems for review of specific detail.

BASF
We create chemistry

FRAMING*

ACCEPTABLE SHEATHING*

FINESTOP RA/FINESTOP RS/
FINESTOP VB

WRAP BASE COAT AND
REINFORCING MESH

BACKER ROD AND SEALANT

BASF COLOR COAT

BASF MAXFLASH OR SEALANT AT
PERIMETER OF PENETRATION

APPROVED EPS INSULATION BOARD

FINESTONE LAMINA:
FINESTONE BASE COAT
FINESTONE REINFORCING MESH
FINESTONE FINISH COAT

NOTE:

- ADD FRAMING AS NECESSARY TO SUPPORT PENETRATION
- DO NOT APPLY FINISH INTO JOINT TO RECEIVE SEALANT

*BY OTHERS

REV 170825

TYPICAL PIPE PENETRATION FINEPANEL CI-D DESIGN

SCALE: NTS

08

Structure, substrates, flashing, and other items which are not part of the BASF *FinePanel CI-D System* are the responsibility of others. This detail is subject to change without notice. BASF Corporation - Wall Systems (herein after BASF Wall Systems) accepts no liability for the end use of this detail. For conditions not shown, consult BASF Wall Systems for review of specific detail.

■ BASF

We create chemistry

FRAMING*

ACCEPTABLE SHEATHING*

FINESTOP RA/FINESTOP RS/
FINESTOP VB

FINESTONE ADHESIVE/BASE COAT
APPLIED TO EPS INSULATION BOARD

APPROVED EPS INSULATION BOARD

FINESTONE LAMINA:
FINESTONE BASE COAT
FINESTONE REINFORCING MESH
FINESTONE FINISH COAT

BASF MAXFLASH OR SHEATHING FABRIC
EMBEDDED IN FINESTOP RA; RS; VB OR
WS FLASH w/ FLASHING PRIMER

WRAP BASE COAT AND
REINFORCING MESH

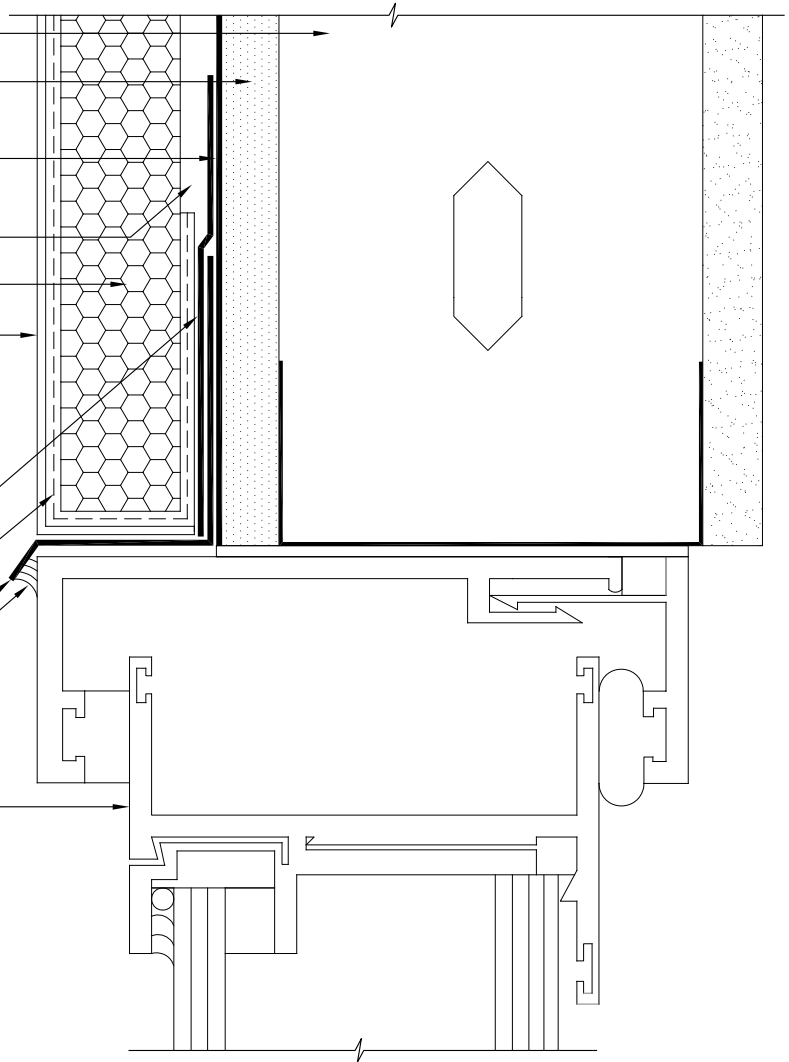
FLASHING*

SEALANT*

WINDOW*

NOTE:

- WRAP FINESTOP RA/ RS/ VB INTO ROUGH OPENING ON HEAD IF ALSO INTENDED TO BE AN AIR BARRIER.
- PROVIDE END DAMS ON FLASHING



*BY OTHERS

REV 170825

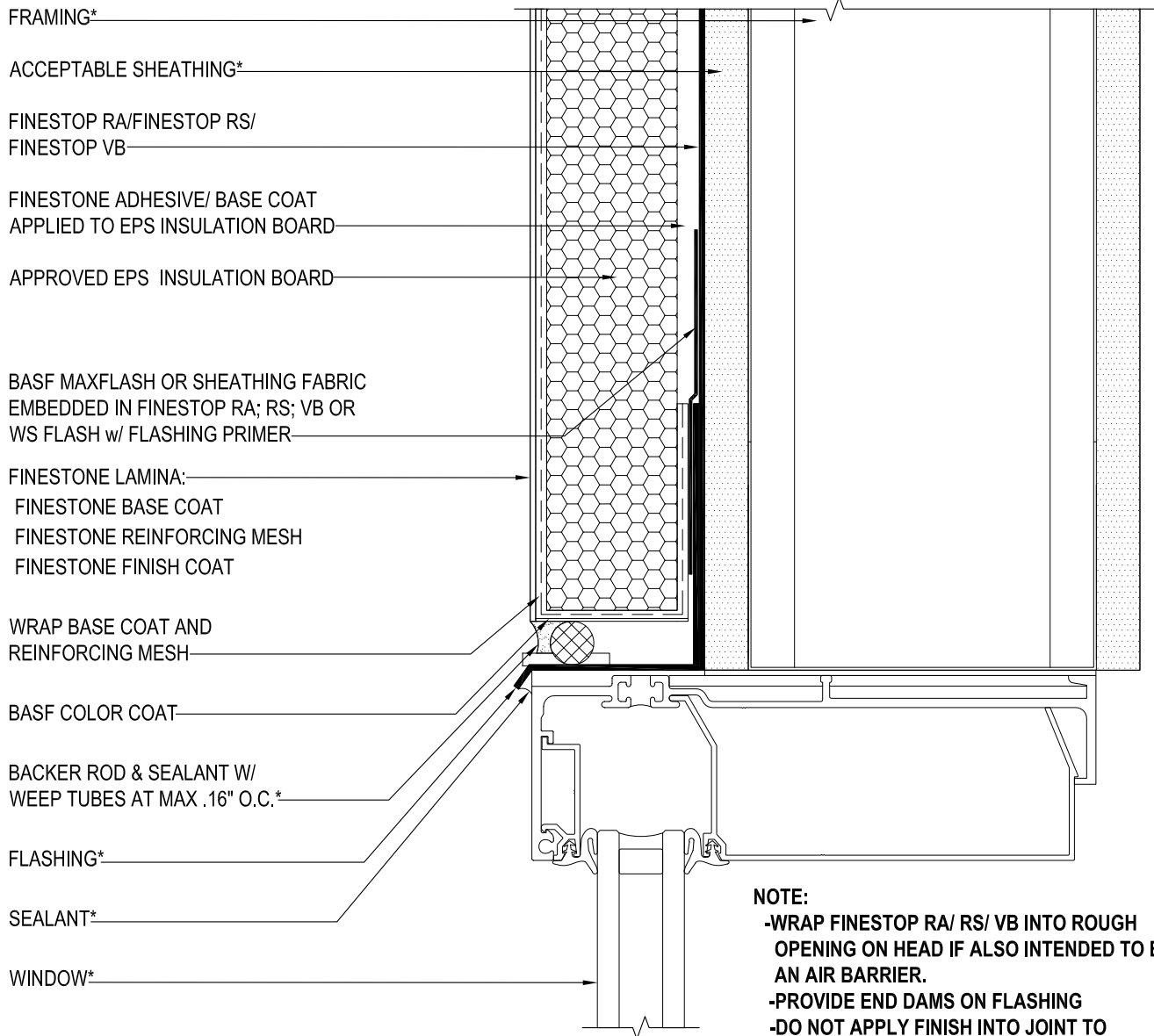
TYPICAL WINDOW HEAD (FLUSH) FINEPANEL CI-D DESIGN

SCALE: NTS

09

Structure, substrates, flashing, and other items which are not part of the BASF *FinePanel CI-D System* are the responsibility of others. This detail is subject to change without notice. BASF Corporation - Wall Systems (herein after BASF Wall Systems) accepts no liability for the end use of this detail. For conditions not shown, consult BASF Wall Systems for review of specific detail.

BASF
We create chemistry



NOTE:
 -WRAP FINESTOP RA/ RS/ VB INTO ROUGH
 OPENING ON HEAD IF ALSO INTENDED TO BE
 AN AIR BARRIER.
 -PROVIDE END DAMS ON FLASHING
 -DO NOT APPLY FINISH INTO JOINT TO
 RECEIVE SEALANT

*BY OTHERS

REV 170825

TYPICAL WINDOW HEAD (FLUSH) WITH WEEP TUBES FINEPANEL CI-D DESIGN

SCALE: NTS
10

Structure, substrates, flashing, and other items which are not part of the BASF *FinePanel CI-D System* are the responsibility of others. This detail is subject to change without notice. BASF Corporation - Wall Systems (herein after BASF Wall Systems) accepts no liability for the end use of this detail. For conditions not shown, consult BASF Wall Systems for review of specific detail.



FRAMING*

ACCEPTABLE SHEATHING*

FINESTOP RA/FINESTOP RS/
FINESTOP VB

FINESTONE ADHESIVE/ BASE COAT
APPLIED TO EPS INSULATION BOARD

APPROVED EPS INSULATION BOARD

BASF MAXFLASH OR SHEATHING FABRIC
EMBEDDED IN FINESTOP RA; RS; VB OR
WS FLASH w/ FLASHING PRIMER

DIVERTER TRACK*

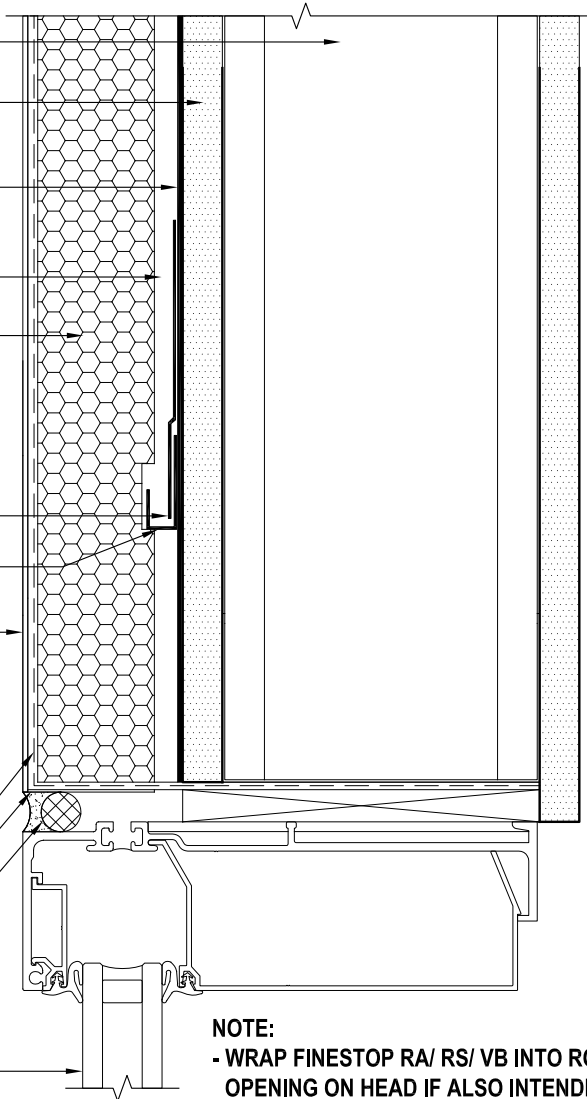
FINESTONE LAMINA:
FINESTONE BASE COAT
FINESTONE REINFORCING MESH
FINESTONE FINISH COAT

WRAP BASE COAT AND
REINFORCING MESH

BASF COLOR COAT

BACKER ROD & SEALANT W/
WEEP TUBES AT MAX .16" O.C.*

WINDOW*



NOTE:

- WRAP FINESTOP RA/ RS/ VB INTO ROUGH OPENING ON HEAD IF ALSO INTENDED TO BE AN AIR BARRIER.
- DO NOT APPLY FINISH INTO JOINT TO RECEIVE SEALANT

*BY OTHERS

REV 170825

TYPICAL WINDOW HEAD (FLUSH) WITH DIVERTER TRACK FINEPANEL CI-D DESIGN

SCALE: NTS

11

Structure, substrates, flashing, and other items which are not part of the BASF *FinePanel CI-D System* are the responsibility of others. This detail is subject to change without notice. BASF Corporation - Wall Systems (herein after BASF Wall Systems) accepts no liability for the end use of this detail. For conditions not shown, consult BASF Wall Systems for review of specific detail.

■ BASF

We create chemistry

FINESTONE LAMINA:
 FINESTONE BASE COAT
 FINESTONE REINFORCING MESH
 FINESTONE FINISH COAT

ACCEPTABLE SHEATHING*

FINESTOP RA/FINESTOP RS/
 FINESTOP VB

FINESTONE ADHESIVE / BASE COAT
 APPLIED TO EPS INSULATION

APPROVED EPS INSULATION BOARD

FRAMING*

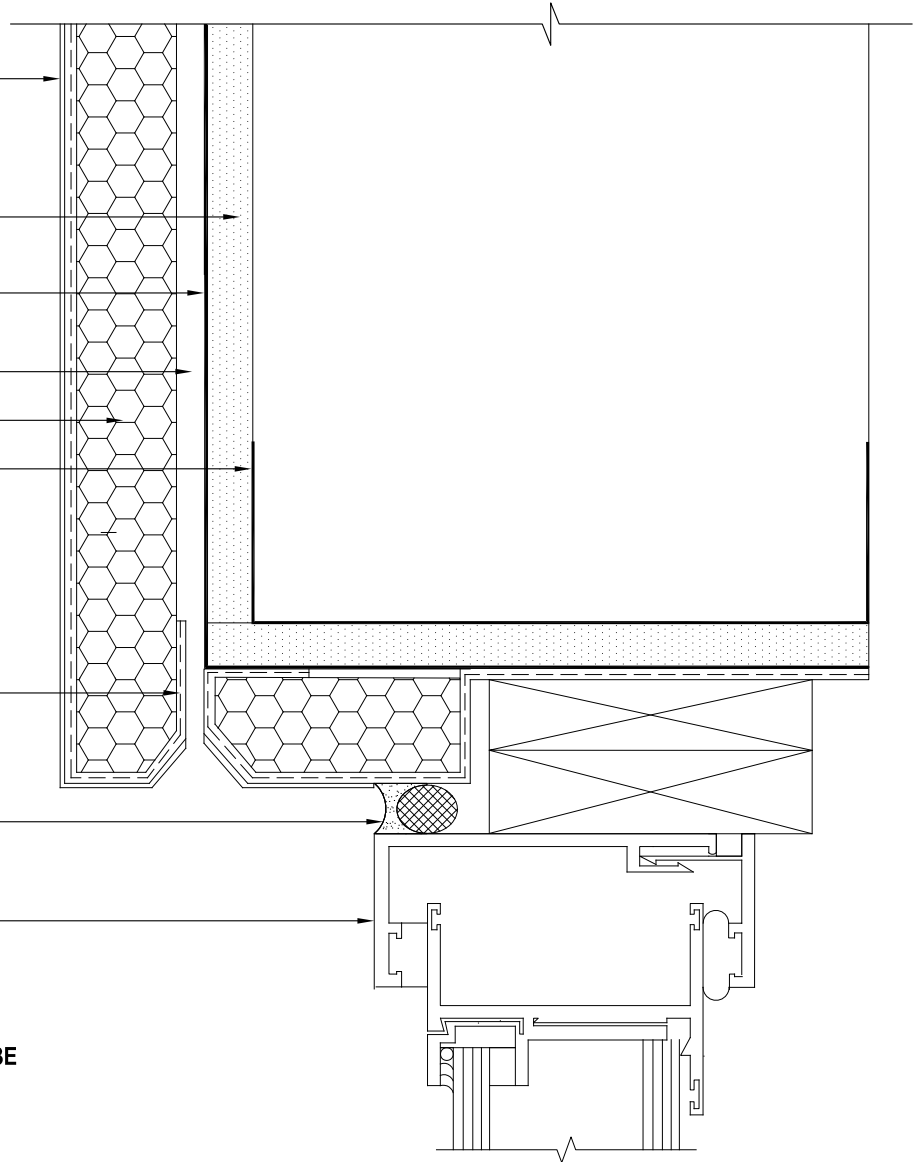
WRAP BASE COAT AND
 REINFORCING MESH

BACKER ROD AND SEALANT*

WINDOW*

NOTE:

- WRAP FINESTOP RA/ RS/ VB INTO ROUGH OPENING ON HEAD IF ALSO INTENDED TO BE AN AIR BARRIER.
- DO NOT APPLY FINISH INTO JOINT TO RECEIVE SEALANT



*BY OTHERS

REV 170825

TYPICAL WINDOW HEAD (RECESSED) FINEPANEL CI-D DESIGN

SCALE: NTS

12

Structure, substrates, flashing, and other items which are not part of the BASF *FinePanel CI-D System* are the responsibility of others. This detail is subject to change without notice. BASF Corporation - Wall Systems (herein after BASF Wall Systems) accepts no liability for the end use of this detail. For conditions not shown, consult BASF Wall Systems for review of specific detail.

■ BASF

We create chemistry

FINESTONE LAMINA:
 FINESTONE BASE COAT
 FINESTONE REINFORCING MESH
 FINESTONE FINISH COAT

ACCEPTABLE SHEATHING*

BASF MAXFLASH OR SHEATHING FABRIC
 EMBEDDED IN FINESTOP RA; RS; VB OR
 WS FLASH w/ FLASHING PRIMER

DIVERTER TRACK*

FINESTONE ADHESIVE / BASE COAT
 APPLIED TO EPS INSULATION

APPROVED EPS INSULATION BOARD

FRAMING*

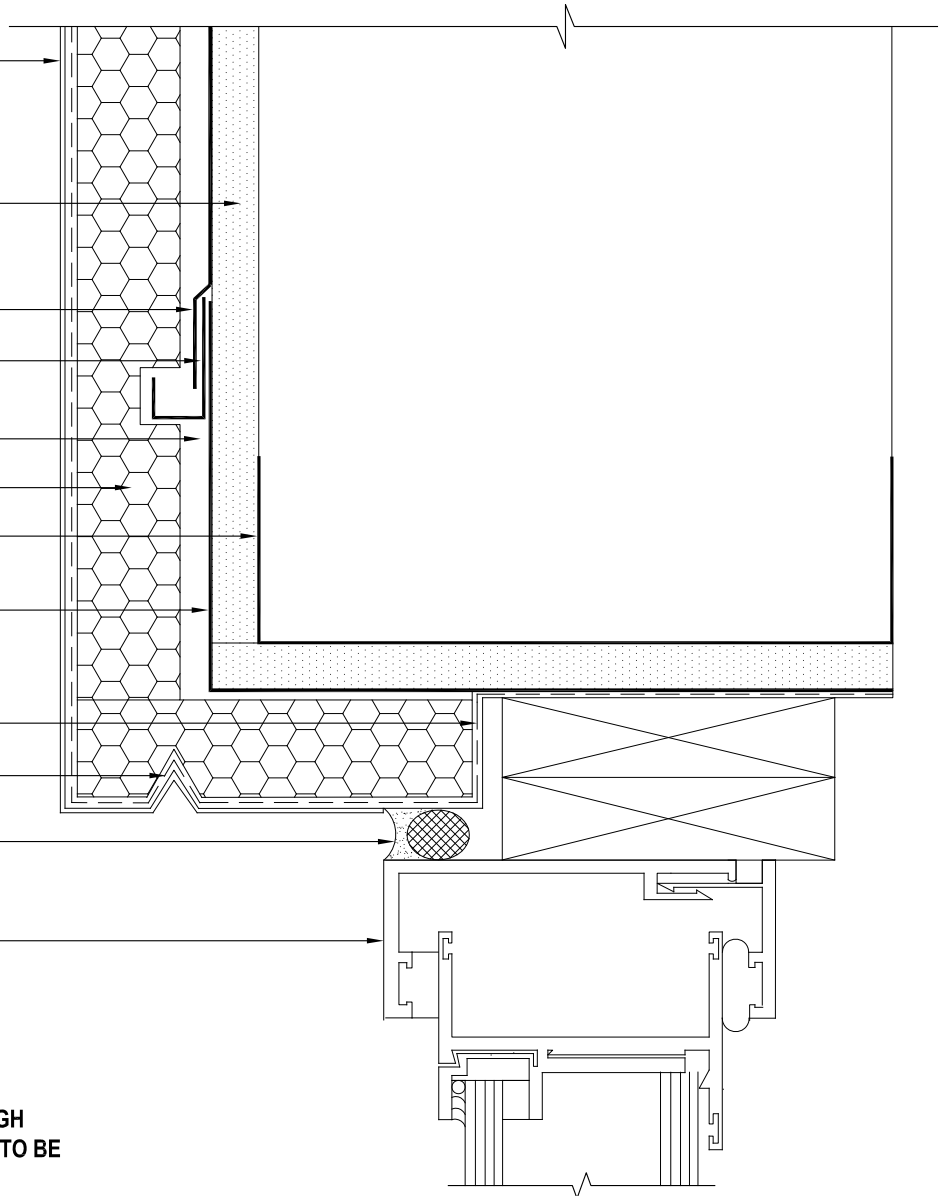
FINESTOP RA/FINESTOP RS/
 FINESTOP VB

WRAP BASE COAT AND
 REINFORCING MESH

DRIP

BACKER ROD AND SEALANT*

WINDOW*



NOTE:

- WRAP FINESTOP RA/ RS/ VB INTO ROUGH OPENING ON HEAD IF ALSO INTENDED TO BE AN AIR BARRIER.
- DO NOT APPLY FINISH INTO JOINT TO RECEIVE SEALANT

*BY OTHERS

REV 170825

TYPICAL WINDOW HEAD (RECESSED) W/ DIVERTER TRACK FINEPANEL CI-D DESIGN

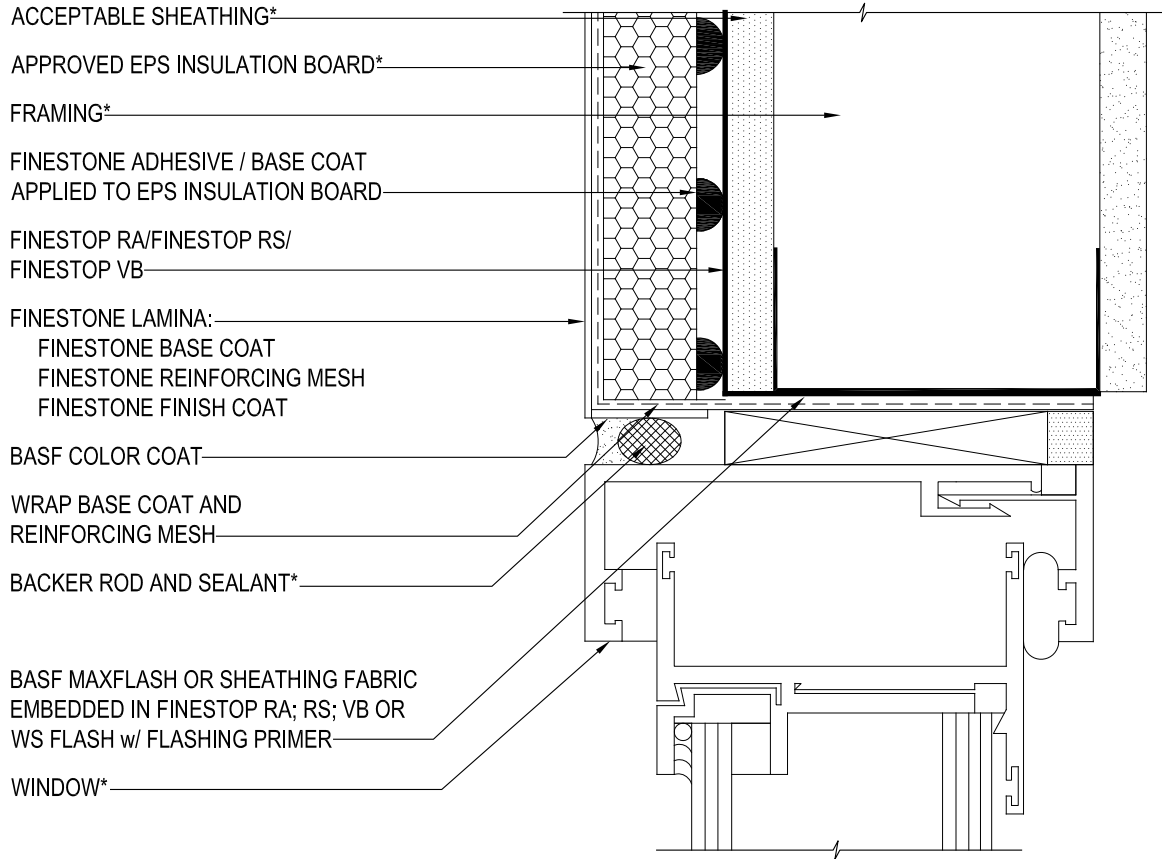
SCALE: NTS

13

Structure, substrates, flashing, and other items which are not part of the BASF *FinePanel CI-D System* are the responsibility of others. This detail is subject to change without notice. BASF Corporation - Wall Systems (herein after BASF Wall Systems) accepts no liability for the end use of this detail. For conditions not shown, consult BASF Wall Systems for review of specific detail.

■ BASF

We create chemistry



NOTE: DO NOT APPLY FINISH INTO JOINT TO RECEIVE SEALANT

***BY OTHERS**

REV 170825

TYPICAL WINDOW JAMB (FLUSH) FINEPANEL CI-D DESIGN

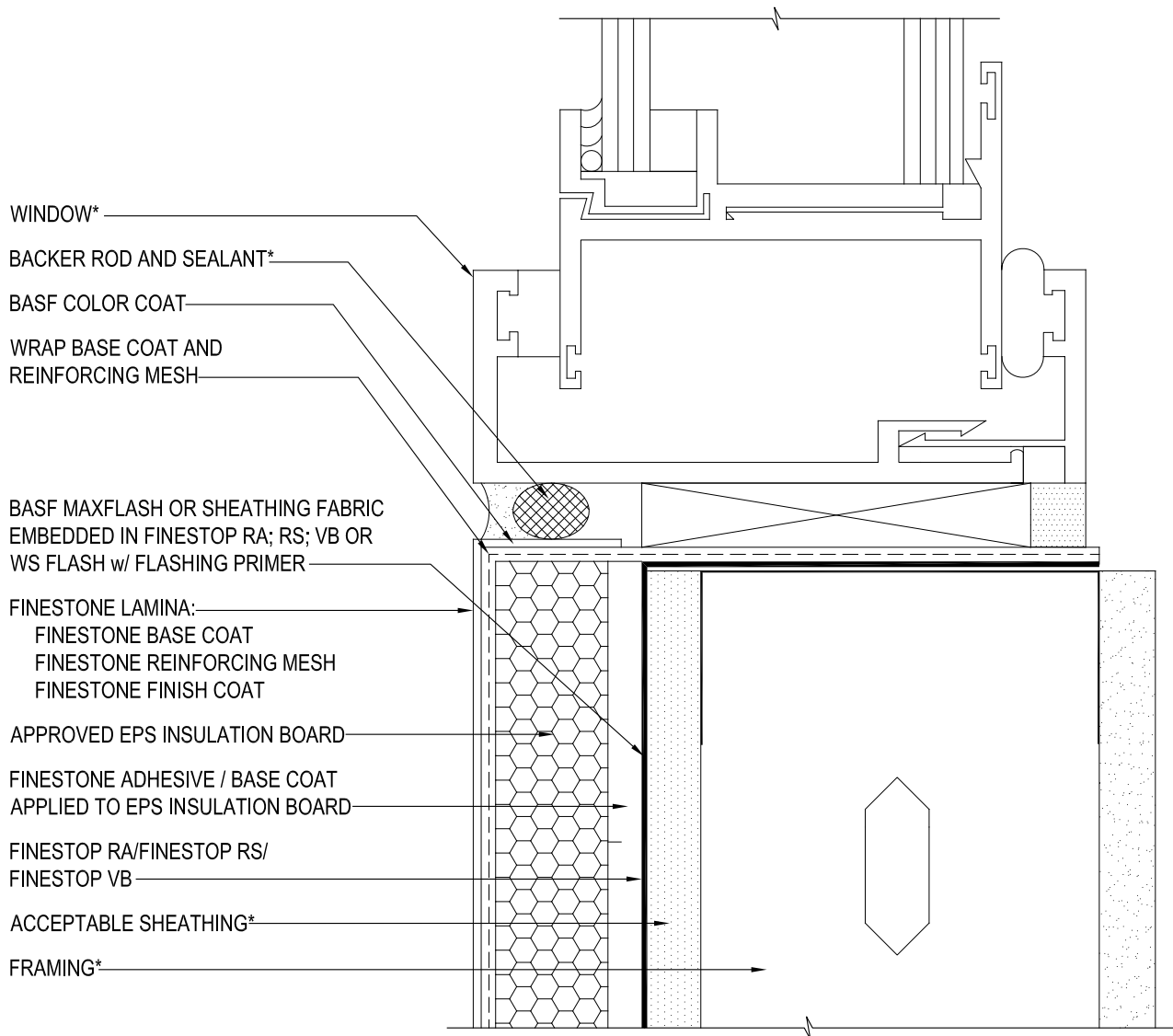
SCALE: NTS

14

Structure, substrates, flashing, and other items which are not part of the BASF *FinePanel CI-D System* are the responsibility of others. This detail is subject to change without notice. BASF Corporation - Wall Systems (herein after BASF Wall Systems) accepts no liability for the end use of this detail. For conditions not shown, consult BASF Wall Systems for review of specific detail.

■ BASF

We create chemistry



NOTE: DO NOT APPLY FINISH INTO JOINT TO RECEIVE SEALANT

*BY OTHERS

REV 170825

TYPICAL WINDOW SILL DETAIL (FLUSH) FINEPANEL CI-D DESIGN

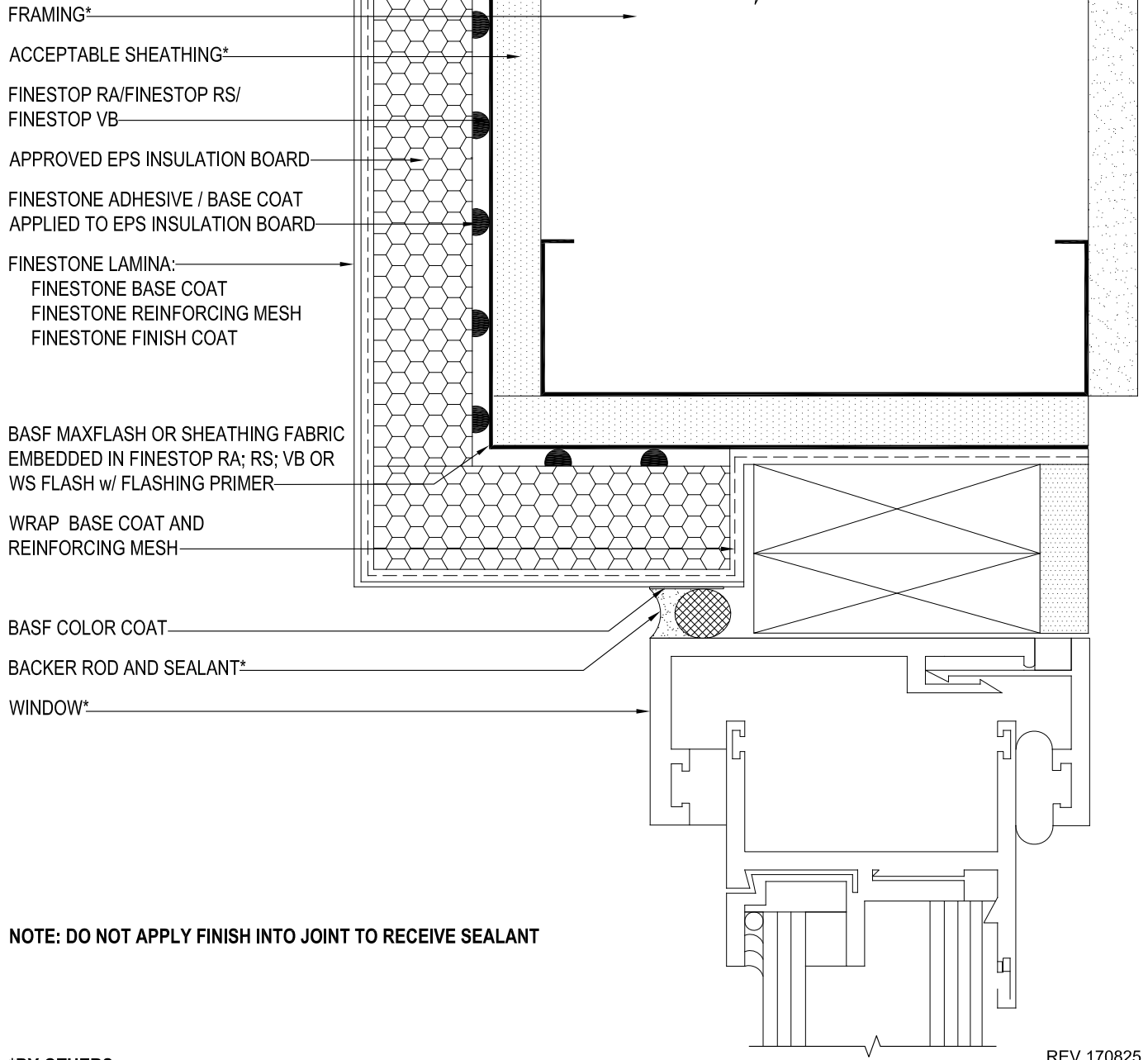
SCALE: NTS

15

Structure, substrates, flashing, and other items which are not part of the BASF *FinePanel CI-D System* are the responsibility of others. This detail is subject to change without notice. BASF Corporation - Wall Systems (herein after BASF Wall Systems) accepts no liability for the end use of this detail. For conditions not shown, consult BASF Wall Systems for review of specific detail.

■ BASF

We create chemistry



NOTE: DO NOT APPLY FINISH INTO JOINT TO RECEIVE SEALANT

*BY OTHERS

REV 170825

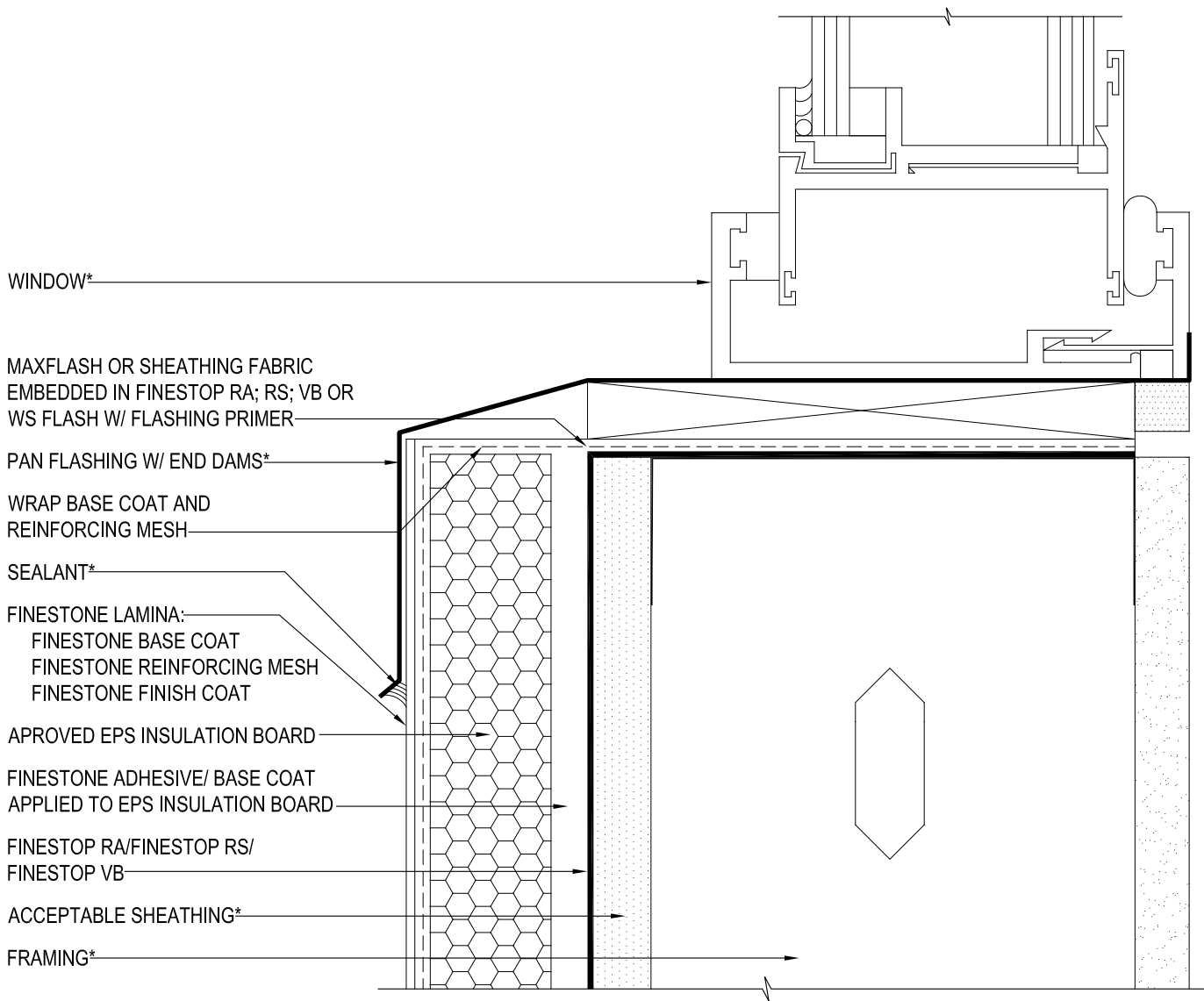
TYPICAL WINDOW JAMB (RECESSED) FINEPANEL CI-D DESIGN

SCALE: NTS

16

Structure, substrates, flashing, and other items which are not part of the BASF *FinePanel CI-D System* are the responsibility of others. This detail is subject to change without notice. BASF Corporation - Wall Systems (herein after BASF Wall Systems) accepts no liability for the end use of this detail. For conditions not shown, consult BASF Wall Systems for review of specific detail.

BASF
We create chemistry



WINDOW*

MAXFLASH OR SHEATHING FABRIC
EMBEDDED IN FINESTOP RA; RS; VB OR
WS FLASH W/ FLASHING PRIMER

PAN FLASHING W/ END DAMS*

WRAP BASE COAT AND
REINFORCING MESH

SEALANT*

FINESTONE LAMINA:
FINESTONE BASE COAT
FINESTONE REINFORCING MESH
FINESTONE FINISH COAT

APPROVED EPS INSULATION BOARD

FINESTONE ADHESIVE/ BASE COAT
APPLIED TO EPS INSULATION BOARD

FINESTOP RA/FINESTOP RS/
FINESTOP VB

ACCEPTABLE SHEATHING*

FRAMING*

NOTE:

- EXTEND FLASHING MIN 50 mm (2") OVER EIFS
- FLASHINGS ARE BY OTHERS AND SHALL BE AS PER DESIGN / CODE REQUIREMENT
- DO NOT APPLY FINISH INTO JOINT TO RECEIVE SEALANT

*BY OTHERS

REV 170825

TYPICAL WINDOW SILL DETAIL (RECESSED) FINEPANEL CI-D DESIGN

SCALE: NTS

17

Structure, substrates, flashing, and other items which are not part of the BASF *FinePanel CI-D System* are the responsibility of others. This detail is subject to change without notice. BASF Corporation - Wall Systems (herein after BASF Wall Systems) accepts no liability for the end use of this detail. For conditions not shown, consult BASF Wall Systems for review of specific detail.

