

# WABO® STRIPSEAL

## Armored small movement expansion joint system

### DESCRIPTION

**WABO STRIPSEAL** expansion joint system consists of an elastomeric seal mechanically locked between two steel edge members providing a superior watertight sealing system. The rugged design of the **WABO STRIPSEAL** system can easily accommodate the high loads of vehicular traffic while effectively sealing expansion joints in bridges and structures with movements up to 125 mm. **WABO STRIPSEAL** systems can be manufactured to accommodate a variety of field configurations along with multidirectional movements. The **WABO STRIPSEAL** has been engineered so that the elastomeric seal can be inserted either prior to or after securing the steel shapes to the superstructure.

### ADVANTAGES

- **Versatility**  
**WABO STRIPSEAL** that utilize steel edge members provide a basis for greater movement potential. The elastomeric sealing element allows least resistance to racking movements of skewed joints. A choice of steel edge members will suit any new construction or rehabilitation project.
- **Resilience**  
The **WABO STRIPSEAL** handles all types of joint movements and configurations. High impact and bridge deck deflections will not interfere with the operations of the system.
- **Watertightness**  
The continuous elastomeric sealing element offers additional leak proof protection by being bonded to the steel edge members and then mechanically locked into place. The elastomeric seal can be factory molded for horizontal changes and joint intersections.
- **Heavy duty**  
**WABO STRIPSEAL** system can accommodate all types of joint movements and configurations under heavy and repetitive impact loadings.



### RECOMMENDED FOR

- Sealing of joints on bridges and parking decks.
- Skewed joints.
- High impact and repetitive loading conditions.
- Expansion joint applications with maximum movement up to 125 mm.
- New construction or repair and maintenance of existing joints.

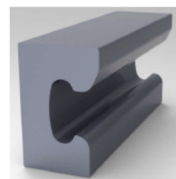
### MOVEMENT TABLE

Type of Seal (mm)	Total Movement (mm)	Joint Width (mm)		Min. Install Width (mm)
		Min.	Max.	
SE-300	80	0	80	38
SE-400	100	0	100	38
SE-500	125	0	125	51
EFE-400	100	13	113	64

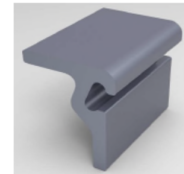
### PROPERTIES

#### STEEL EDGE MEMBERS:

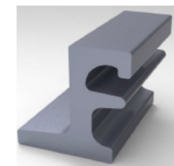
The **WABO STRIPSEAL** joint system incorporates the use of two standard configurations. Both edge members are available in either ASTM A588 weathering grade steel or Q345 High Strength structural grade steel.



Type D



Type M



Type E

# WABO® STRIPSEAL

## TYPICAL DETAILS

FIGURE 1: CAST IN PLACE

Steel edge members are cast into the deck.

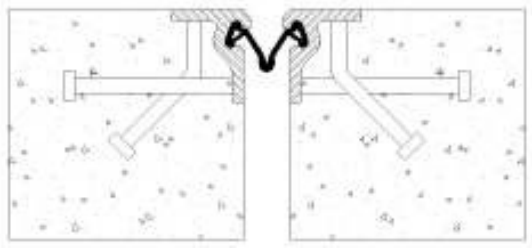


FIGURE 2: JOINT REPAIR CONDITION

Steel edge members are cast into elastomeric concrete.

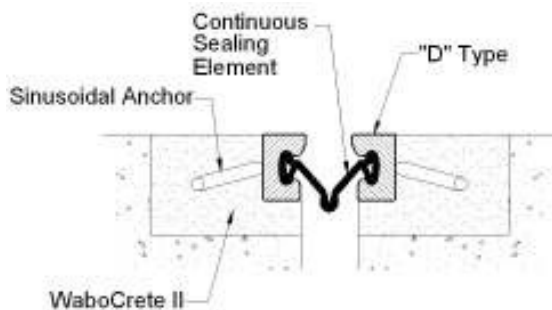
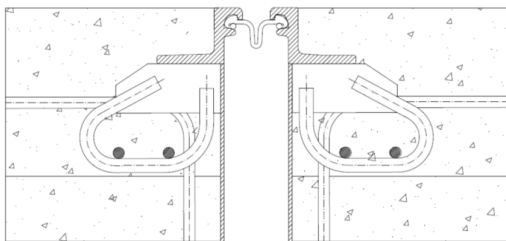


FIGURE 3: CAST IN PLACE

Steel edge members with anchor loop and plate (deep) are cast into the deck



## INSTALLATION SUMMARY

- If system is to be installed in sections, special care should be taken to the field weld details on the manufacturer's shop drawings.
- The **WABO STRIPSEAL** joint system is lifted and lowered into final position. The steel edge members are suspended into the block out utilizing adjustable levelling devices.
- Before securing or casting joint system to structure, the setting joint opening dimension shall be adjusted to the proper ambient temperature.
- Complete all bolted or welded connections to the superstructure. When casting the joint into the structure, proper compaction of concrete around the system is required.
- The elastomeric seals shall be installed in continuous lengths spanning the entire roadway width. **WABO PRIMA LUB ADHESIVE** is brushed into the full perimeter on the steel edge member seal cavity and around the seal lug prior to actual seal installation.



# WABO® STRIPSEAL

## ADDITIONAL REQUIREMENTS / EQUIPMENT

- Seal installation tool for installing the **WABO STRIPSEAL** elastomeric seal. Contact Wabo Asia Pacific for seal installation tool details.
- Certified welder to be utilized for field welding of sections.

## PACKAGING

- **WABO STRIPSEAL** steel edge members are manufactured and supplied in full length in maximum 12 meters length but if longer than 12 meters it will be properly spliced for transportation.
- The **WABO STRIPSEAL** elastomeric seals are supplied in continuous lengths and coiled on a pallet for shipping. However, seal will be installed, if a joint in full length is shipped.
- **WABO PRIMA LUB ADHESIVE** is one part moisture curing urethane adhesive shipped in one gallon containers.

## LIMITATIONS

Wabo Asia Pacific does NOT recommend the use of **WABO STRIPSEAL** on joints where movements exceed 125 mm.

## COVERAGE

**WABO PRIMA LUB ADHESIVE** 0.012 gallon/meter of joint (SE and EFE series).

## STORAGE

Store **WABO PRIMA LUB ADHESIVE** out of direct sunlight in a dry place between 10-32°C.  
Store fabricated **WABO STRIPSEAL** joint system along with **WABO STRIPSEAL** elastomeric seal in an area that will not damage the materials.



## QUALITY AND CARE

All products originating from Master Builders Solutions Dubai, UAE facility are manufactured under a management system independently certified to conform to the requirements of the quality, environmental and occupational health & safety standards ISO 9001 and ISO 14001.

\* Properties listed are based on laboratory controlled tests.

## STATEMENT OF RESPONSIBILITY

The technical information and application advice given in this Master Builders Solutions publication are based on the present state of our best scientific and practical knowledge. As the information herein is of a general nature, no assumption can be made as to a product's suitability for a particular use or application and no warranty as to its accuracy, reliability or completeness either expressed or implied is given other than those required by law. The user is responsible for checking the suitability of products for their intended use.

## NOTE

Field service where provided does not constitute supervisory responsibility. Suggestions made by Master Builders Solutions either orally or in writing may be followed, modified or rejected by the owner, engineer or contractor since they, and not Master Builders Solutions, are responsible for carrying out procedures appropriate to a specific application.

**Master Builders Solutions  
Construction Chemicals LLC**  
P.O. Box 37127, Dubai, UAE  
Tel: +971 4 8090800  
[www.master-builders-solutions.com/en-ae](http://www.master-builders-solutions.com/en-ae)

**Disclaimer:** the TUV mark relates to certified management system and not to the product mentioned on this datasheet



A brand of  
**MBCC GROUP**

MBS\_CC-UAE/Wabo\_Stripseal