

THIS METHOD STATEMENT COVERS THE PREPARATION AND APPLICATION OF **MasterTop TC 943**.

**METHOD STATEMENT: MasterTop TC 943 - The innovative topcoat with exceptional cleanability and scratch for hard wearing solutions**

#### INTRODUCTION:

**MasterTop TC 943** is a pigmented, non solvented, two-component topcoat producing a light stable, tough and durable surface with a lightly structured satin-mat finish that has exceptional scratch, impact and wear resistance.

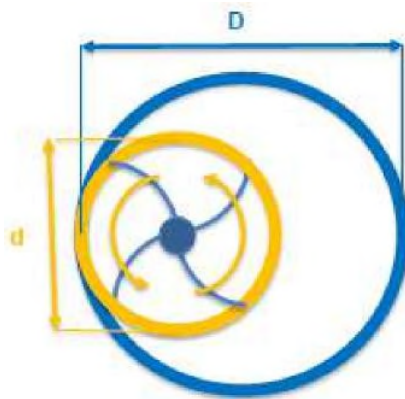
#### PLANNING

Before starting the application of **MasterTop TC 943**, consideration must be given to the area being coated. Careful planning with sufficient labour will ensure application efficiency and optimum final aesthetics.

#### MIXING METHOD

**MasterTop TC 943** is supplied in working packs which are pre-packaged in the exact ratio. Before mixing, precondition both A and B components to a temperature of approximately 15 to 25°C. Pre-mix Part A and Part B separately. Pour the entire contents of Part A into Part B. **DO NOT MIX BY HAND**.

Mix with a mechanical drill and paddle at a low speed (ca. 300 rpm) for at least 2 minutes. The diameter of the paddle (d) should be higher than half the diameter (D) of the bucket ( $d > D/2$ ).



Keep the mixer paddle submerged in the coating to avoid the introducing air bubbles. Scrape the sides and the bottom of the container several times to ensure complete mixing.

**DO NOT WORK OUT OF THE MIXING CONTAINER.**

After sufficient mixing to give a homogeneous consistency pour the material into a clean fresh container and mix for another minute. Always ensure that the second container is kept clean and free from curing material.

Maintaining a steady supply of material in time with the speed of application is critical to ensure a wet edge is maintained and optimum aesthetics are achieved. Mixing too high a quantity and leaving material to stand in the bucket will significantly reduce the pot life. Insufficient material will interrupt the application process and result in visible over-laps in the finished floor.

**Ideal application temperatures are 15°C to 25°C.**

**The mixed MasterTop TC 943 should be within 15°C to 25°C range during installation.**

Applications should not proceed if the temperature is expected to be below the dew point at any time during the operation.

## **APPLICATION METHOD**

The application method consists in 3 steps:

### **STEP 1:**

#### **SQUEEGEE FOR FAST UNIFORM SPREADING**

Immediately after the mixing is finished, pour **MasterTop TC 943** directly onto the floor and spread using a rubber squeegee (Vican Ultra Hygienic 400 mm type).

**DO NOT ALLOW MATERIAL TO STAND IN THE BUCKET.**



Spread in the same direction to ease the organization during the following steps of the process.



*Check consumption. Ensuring a uniform 0.12 kg/m<sup>2</sup>*

## **STEP 2:**

### **CROSS ROLLING FOR EVEN COVERAGE**

As soon as 1.5 – 2 m of material has been applied with the rubber squeegee use a microfiber roller (type multi-tool microfiber Roller Premium 50 cm width and 11 mm hair length type) perpendicular to the direction of squeegee application, ensure all areas are covered and that there is a uniform appearance.



*Note: Before starting the application, clean the roll thoroughly with scotch tape to avoid shedding. Ensure full saturation of the roller to avoid uneven coverage*



Application with the squeegee must continue whilst step 2 is in progress to ensure a wet edge is maintained. In areas with difficult geometry it may be necessary to stand in the wet material while conducting step 2. In this case either use rounded spike shoes or protect the sole of shoes with sandpaper (see step 3).

### **STEP 3:**

#### **FINISHING, CREATING STRUCTURED SURFACE**

The final finish is completed immediately using a nylon roller (type Multitool Nylon Top Coat Roller Premium 50 cm (40 – 60 cm) width and 11 mm hair length type) in the opposite direction to step 2. Where necessary walk in the freshly applied **MasterTop TC 943**, ensure all areas are rolled.



Note: Before starting the application, clean the roll thoroughly with scotch tape to avoid shedding. Ensure full saturation of the roller to avoid uneven coverage. The roller should be double armed to ensure even pressure.

When walking in the fresh material either use rounded spiked shoes (ensuring to avoid leaving marks) or preferably use shoes with their soles protected by sandpaper (Durite S413 type). The sandpaper evenly spreads the weight leaving marks that are quickly and efficiently rolled out.



All three steps must continue in a continuous process to ensure a wet edge is maintained and the optimum aesthetics are achieved.



*Note: It should not be necessary to apply an initial care application to **MasterTop TC 943**.*

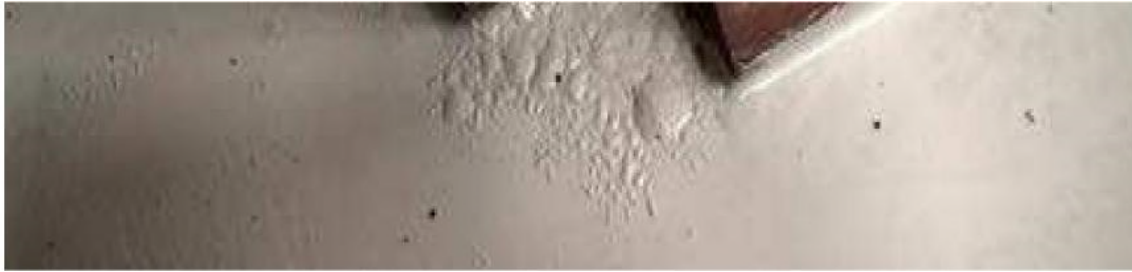


## **WATCH POINTS**

It is important to always work wet in wet when overlapping otherwise roller marks will be visible in the final finish.

A uniform appearance and texture are best achieved by ensuring a uniform coverage rate.

High consumption rates will cause foaming. This is especially important at edges and corners. When using a brush or small roller spread the material carefully to ensure the correct coverage.



**MasterTop TC 943** has excellent hiding power. As a general rule only 1 layer is required. A second layer (the day after) might be required to achieve optimum aesthetics in the following cases:

- In refurbishment applications where it is not possible to get a similar colour between base coat and topcoat. is not a similar colour as **MasterTop TC 943**.
- Consumption rates below 0.10 kg/m<sup>2</sup>.

Use of unsaturated rollers resulting in a reduced coverage rate (especially at the beginning of the application)

**MasterTop TC 943** is designed for use as a topcoat on new or previously applied body coats. These body coats can be epoxy e.g. **MasterTop BC 372** or hard polyurethane with a shore D > 65 (e.g. **MasterTop BC 375N**).

Do not apply directly onto an epoxy primer.

## CONSUMPTION

ca. 0.12 kg/m<sup>2</sup>

**Caution:** Do not dilute the topcoat with water, solvent or fillers.

## CLEANING AGENT

Re-usable tools should be carefully cleaned immediately after use with a suitable thinner (Xylene / MEK / Acetone). Once the material has cured mechanical cleaning is required which is made easier by immersion of the tools in a suitable Xylene thinner.

## PACKAGING

**MasterTop TC 943** pigmented is supplied in 10 kg working packs.

- PTA: 3 kg
- PTB: 7 kg



## COLOURS

**MasterTop TC 943** is available in a limited range of RAL colours. For more information, please consult your local sales office.

## WARNING AND PRECAUTIONS

In its cured state, **MasterTop TC 943** is physiologically non-hazardous. The following protective measures should be taken when working with the material:

Wear safety gloves, goggles and protective clothing. Avoid contact with the skin and eyes. In case of eye contact, seek medical attention. Avoid inhalation of the fumes.

When working with the product, do not eat, smoke or work near a naked flame. For additional references to safety hazard warnings, regulations regarding transport and waste management, please refer to the relevant Material Safety Data Sheet. The regulations of the local trade association and/or other authorities, regulating safety and hygiene of workers handling polyurethane and isocyanides must be followed.

---

### STATEMENT OF RESPONSIBILITY

The technical information and application advice given in this Master Builders Solutions publication are based on the present state of our best scientific and practical knowledge. As the information herein is of a general nature, no assumption can be made as to a product's suitability for a particular use or application and no warranty as to its accuracy, reliability or completeness either expressed or implied is given other than those required by law. The user is responsible for checking the suitability of products for their intended use.

---

---

### NOTE

Field service where provided does not constitute supervisory responsibility. Suggestions made by Master Builders Solutions either orally or in writing may be followed, modified or rejected by the owner, engineer or contractor since they, and not Master Builders Solutions, are responsible for carrying out procedures appropriate to a specific application.

---