

# MasterSeal® 700AN

PVC anchor sleeve to fix reinforcement steel support on tunnels, penetrating through PVC membrane

## DESCRIPTION

**MasterSeal 700AN** consists of a hard PVC tube with a flange, on which a piece of PVC membrane is welded. The welding is executed in the factory which guarantees a high-quality standard.

The hard PVC tube has a length of 200 mm and diameter of 28 mm, having a 120 mm diameter flange.

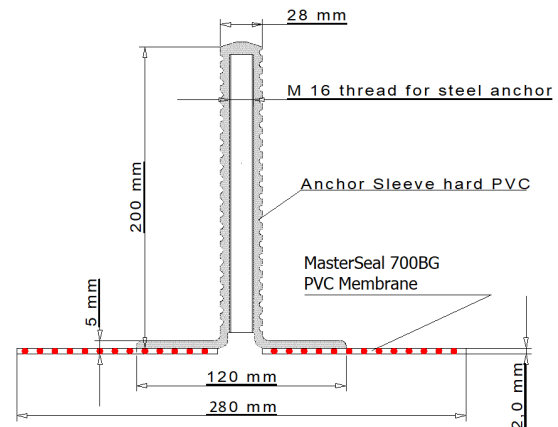
The welded disc is a 2 mm thick PVC membrane with a 280 mm diameter size.



## PACKAGING AND DIMENSION

**MasterSeal 700AN** is supplied as:

No. of pieces / box	30 pieces
Weight	0.40 kg/piece
Length	200 mm
Diameter	280 mm



## USES

**MasterSeal 700AN** is a completely closed element which will not allow the passage of water between the lining system and the inside concrete shell.

Into the hard PVC tube, a steel pin is inserted in order to be able to fix the reinforcement steel of the inside concrete shell. The steel pin can have different lengths depending on the reinforcement.

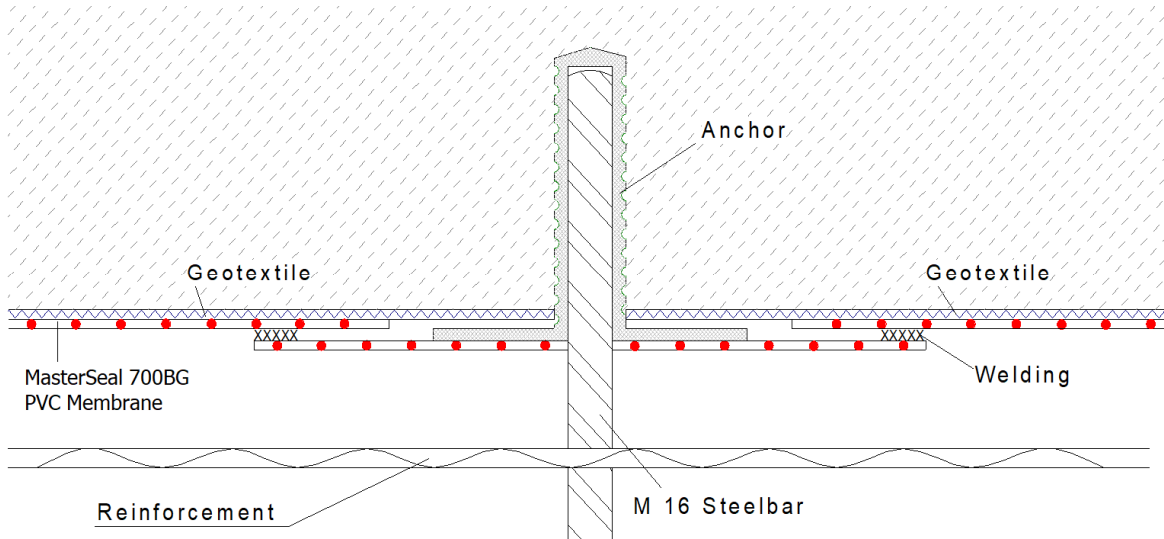
## ADVANTAGES

Even by drilling through the PVC membrane **MasterSeal 700AN** assures a completely sealed system as the hard PVC tube has a closed end.

## PLACING / APPLICATION

- After installing the PVC membrane, a hole is drilled into the shotcrete or concrete through the PVC membrane. The hole must be cleaned thoroughly. Fill 50-75% of the hole with **MasterBrace ADH 2200** or **MasterFlow 932 AN** then insert the PVC tube, letting any excess material to ooze out of the hole.
- Once the adhesive has set, the 280 mm diameter PVC membrane can be welded completely to the main PVC waterproofing membrane.

# MasterSeal<sup>®</sup> 700AN



## QUALITY AND CARE

All products originating from Master Builders Solutions Dubai, UAE facility are manufactured under a management system independently certified to conform to the requirements of the quality, environmental and occupational Health & Safety standards ISO 9001 and ISO 14001.

\* Properties listed are based on laboratory controlled tests.

® = Registered trademark of the MBCC Group in many countries.

MBS\_CC-UAE/SL\_700AN\_09\_20/v1/10\_20

### STATEMENT OF RESPONSIBILITY

The technical information and application advice given in this Master Builders Solutions publication are based on the present state of our best scientific and practical knowledge. As the information herein is of a general nature, no assumption can be made as to a product's suitability for a particular use or application and no warranty as to its accuracy, reliability or completeness either expressed or implied is given other than those required by law. The user is responsible for checking the suitability of products for their intended use.

### NOTE

Field service where provided does not constitute supervisory responsibility. Suggestions made by Master Builders Solutions either orally or in writing may be followed, modified or rejected by the owner, engineer or contractor since they, and not Master Builders Solutions, are responsible for carrying out procedures appropriate to a specific application.

**Master Builders Solutions**  
**Construction Chemicals LLC**  
 P.O. Box 37127, Dubai, UAE  
 Tel: +971 4 8090800  
[www.master-builders-solutions.com/en-ae](http://www.master-builders-solutions.com/en-ae)

**Disclaimer:** the TUV mark relates to certified management system and not to the product mentioned on this datasheet



A brand of  
**MBCC GROUP**