

Project:

Refurbishment of La Cibeles fountain

Location:

Madrid (Spain)

Project completed:

April 2016

Owner/s:

Madrid city council

Applicator/Contractor:

Piscicon/Imesapi (LuzMadrid)

Market sector:

Water Management Industry

Products used & amounts:

MasterSeal 6100 FX: 1500 kg.

MasterFlow 150: 200 kg.

MasterFlow 920 AN: 36 units.

MasterSeal 930+933: 100 m

MasterEmaco P 2100 BP: 400 kg.

MasterEmaco S 5300: 18.000 kg

LA CIBELES FOUNTAIN

Refurbishment and waterproofing



Our reference in Madrid (Spain): La Cibeles fountain

The background

Situated at the crossroads of three of the city's major districts the square and the fountain of Cybele is a symbol of Madrid.

The fountain was built in the reign of Charles III and designed by Ventura Rodríguez between 1777 and 1782. It depicts the Roman goddess of fertility – Cybele (Ceres) – with a sceptre and a key in her hands, standing in a large chariot pulled by two lions.

The fountain of Cybele has been adopted by the football club Real Madrid, whose fans use the area to celebrate its triumphs in competitions.

The challenge

A complete solution to reliably prevent water leakage not only through the concrete structure but also through the joints with quick hardening products that could limit the downtimes in a highly touristic area.

Finishing compatible with original aesthetics of the monument.

This called for the combination of different products with specific properties to ensure a solution with maximum performance.

Contact:

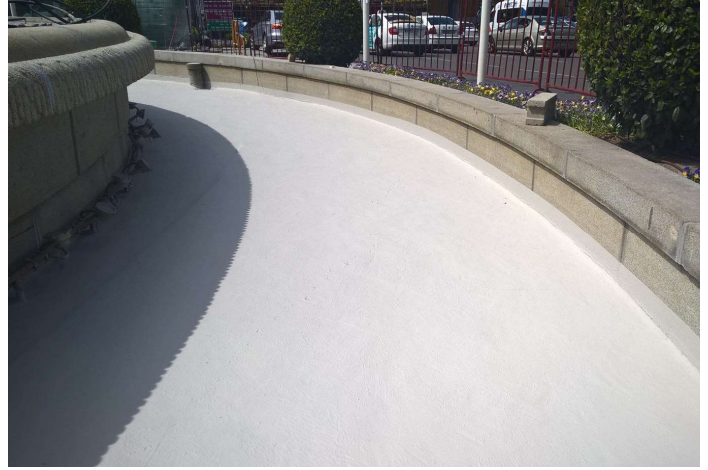
Master Builders Solutions
Carretera de l'Hospitalet, 147-149
08940 Cornellà de Llobregat
Tel. 9361 94 600

mbs-cc@mbcc-group.com

www.master-builders-solutions.com/es.es

LA CIBELES FOUNTAIN

Refurbishment and waterproofing



Our reference in Madrid (Spain): La Cibeles fountain

Our solution

The proposed solution was the application of an elastic and crack bridging waterproofing membrane MasterSeal 6100 FX after a complete refurbishment solution comprising:

- Crack injection with fluid mortar MasterFlow 150.
- Joint sealing with MasterSeal 930 elastic tapes, bonded with MasterSeal 933 epoxy adhesive.
- Substrate repair with lightweight low modulus mortar MasterEmaco S 5300 applied on previously applied primer MasterEmaco P 2100 BP.

The customer's benefit

- Complete solution including concrete repair, surface waterproofing and joint treatment with compatible products offered by one single supplier.
- Minimum added loads to the structure thanks to use of lightweight materials.
- MasterSeal 6100 FX as finishing protective layer protects concrete against carbonation and offers a concrete grey homogeneous color, compatible with original aesthetics that avoids the need of an additional aesthetical paint.
- Low consumption of MasterSeal 6100 FX, reducing the volume of packaging waste as well as application costs
- Approved for potable water contact in accordance with the Drinking Water Directive (Directive 98/83/EC).
- Crack bridging capacities of MasterSeal 6100 FX ensure long term durability of the waterproofing system.

Projects facts at a glance

- Total treated surface: approx. 750 m².
- MasterSeal 6100 FX applied with a thickness of 2 mm thickness and 1,9 kg of product per square meter.
- Time to return to service: less than 3 days after waterproofing membrane was applied, fountain could be filled up.

Master Builders Solutions by MBCC group

The Master Builders Solutions brand expresses MBCC Group's expertise in providing customized chemical solutions for new construction, maintenance, repair and restoration of structures.

Master Builders Solutions is built on the experience gained from more than a century in the construction industry. At the core of the Master Builders Solutions brand is the combined know-how and experience of a global community of construction experts, who connect with you to solve all your construction challenges.

Further information is available at:

www.master-builders-solutions.com/es